

Essential Fish Habitat – EFH ~~101~~ & Updates

- ✓ Introductions
- ✓ Reason for Update
- ✓ EFH Basics
- ✓ EFH Consultation
- ✓ Hands-On Web Review
- ✓ Discussion & Questions (welcome at anytime)



EFH Description for Chinook Salmon

Freshwater Eggs
 EFH for Chinook salmon eggs is the general distribution for this life stage, located in gravel substrates in those waters identified in ADF&G's Catalogue of Waters Important for the Spawning, Rearing, or Migration of Anadromous Fishes (ADF&G 1998a).

Freshwater Larvae and Juveniles
 EFH for larval and juvenile Chinook salmon is the general distribution area for this life stage, located in those waters identified in ADF&G's Catalogue of Waters Important for the Spawning, Rearing, or Migration of Anadromous Fishes (ADF&G 1998a) and contiguous rearing areas within the boundaries of ordinary high water. Juvenile Chinook salmon out-migrate from freshwater areas in April toward the sea and may spend up to a year in a major tributaries or rivers, such as the Kenai, Yukon, Taku, and Copper Rivers.

Estuarine Juveniles
 Estuarine EFH for juvenile Chinook salmon is the general distribution area for this life stage, located in estuarine areas, as identified by the salinity transition zone (ecotone) and the mean higher tide line, within nearshore waters. Chinook salmon smolts and post-smolt juveniles may be present in these estuarine habitats from April through September.

Marine Juveniles
 Marine EFH for juvenile Chinook salmon is the general distribution area for this life stage, located in all marine waters off the coast of Alaska from the mean higher tide line to the 200-nm limit of the EEZ, including the GOA, EBS, Chukchi Sea, and Arctic Ocean. Juvenile marine Chinook salmon are at this life stage from April until annulus formation in January or February during their first winter at sea.

Marine Immature and Maturing Adults
 EFH for immature and maturing adult Chinook salmon is the general distribution area for this life stage, located in marine waters off the coast of Alaska and ranging from the mean higher tide line to the 200-nm limit of the U.S. EEZ, including the GOA, EBS, Chukchi Sea, and Arctic Ocean.

NMFS Staff

Habitat Conservation Division

Juneau	Phone #
Jon Kurland	907-586-7638
Linda Shaw	907-586-7510
Sue Walker	907-586-7646
Katharine Miller	907-586-7643
Cindy Hartmann	907-586-7585



A Great Resource !
A Great Resource !

Anchorage	Phone #
Jeanne Hanson	271-3029
Matthew Eagleton	271-6354
John Olson	271-1508
Lawrence Peltz	271-1332
Brian Lance	271-1301

EFH - Why Update?



Why was an update needed? *A Requirement?*

- American Oceans Campaign (AOC) vs Sec. of Commerce Daley (NOAA Fisheries) set in motion a national review of EFH information and re-evaluation of conservation measures to reduce adverse affects on EFH.
- NOAA Fisheries Alaska Region took a hard look at EFH and prepared an Environmental Impact Statement (EFH EIS) to re-describe EFH and analyze impacts on EFH from both fishing and non-fishing activities.

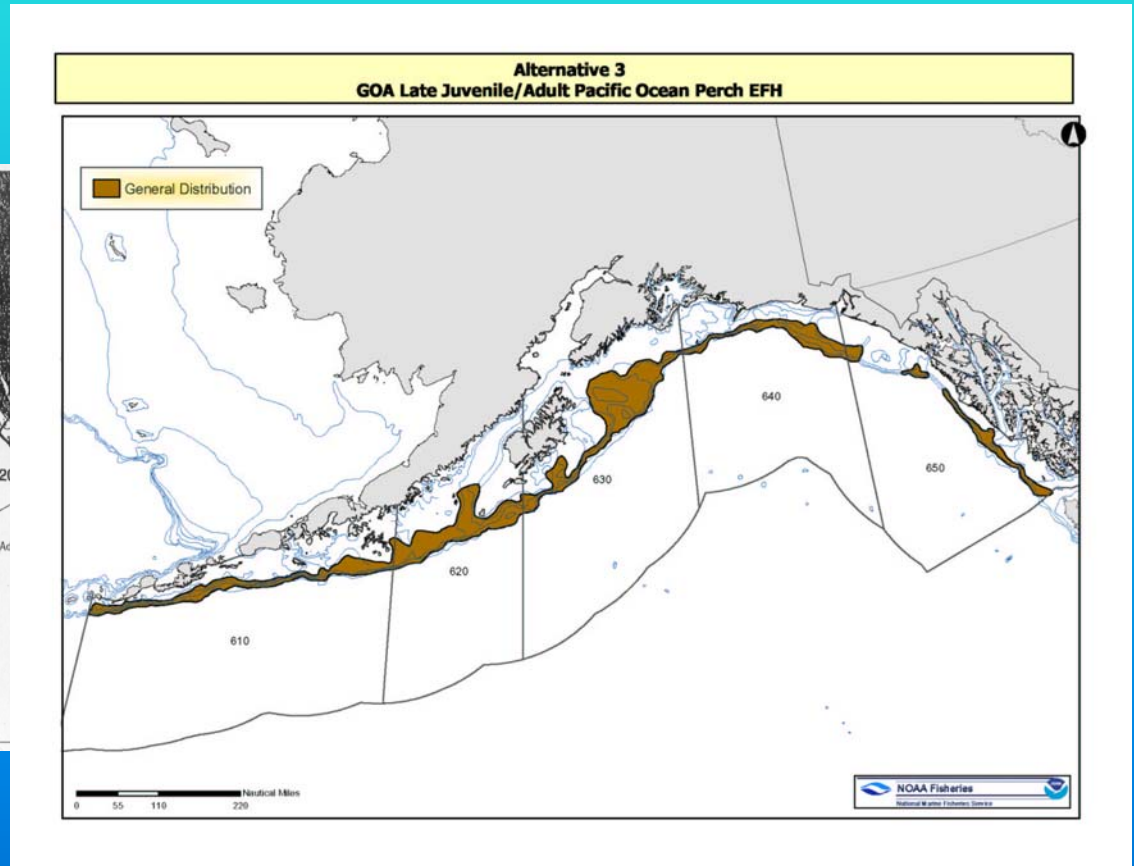
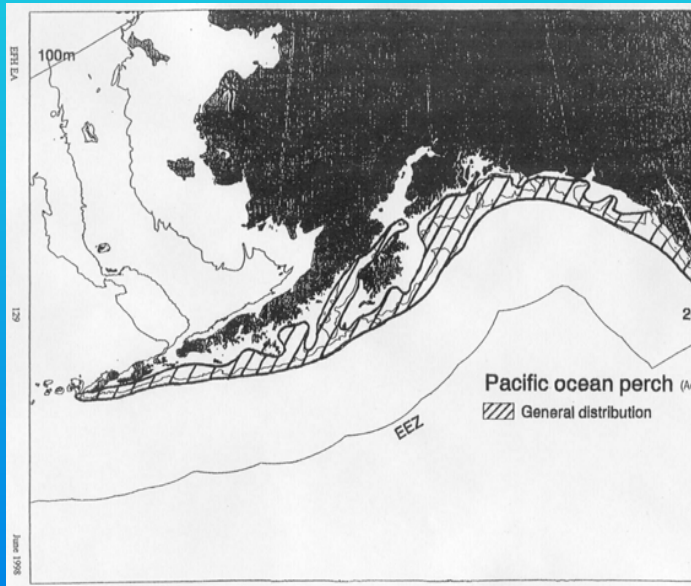
Did EFH information change? *Yes.*

- [EFH descriptions](#) were refined.
- [New HAPCs were identified](#) through a new process to replace the original broad HAPCs.
- [New measures](#) were adopted to reduce the potential adverse effects of fishing on EFH.

When was EFH information last updated?

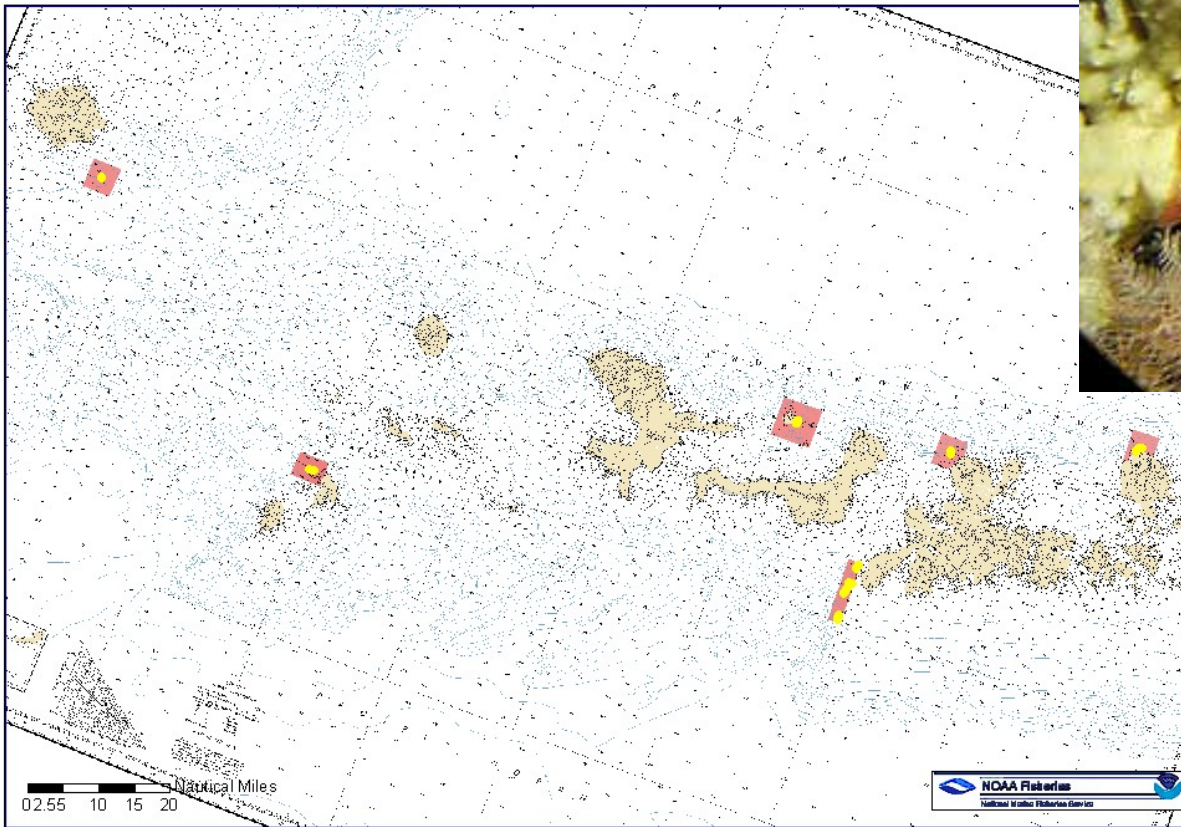
- On May 7, 2006, EFH descriptions and associated conservation measures are updated based on the April 2005 [Final Environmental Impact Statement for Essential Fish Habitat Identification and Conservation in Alaska](#).

EFH Description Changes



Habitat Area of Particular Concern - HAPC

Aleutian Island Coral HAPC Proposal - Overview



Fishery Impact Analysis – Appendix B

- Fishery Impact Analysis on EFH assessed current fishing activities effects on EFH by each gear type and by each EFH species.
- Long term effects of fishing on habitat features. (LEI Index)
- Considerable uncertainty about the consequences for managed species.
- Effects on EFH are minimal because there is no indication that fishing alters the capacity of EFH to support healthy populations of managed species.
- Analysis has many limitations (new and developing model, limited quality of parameter estimates).

Fig 3B. Biological Shelter- Gulf of Alaska

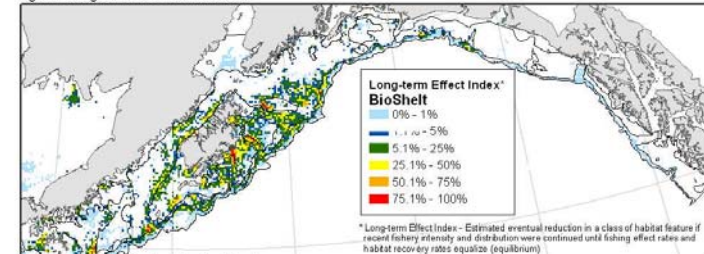
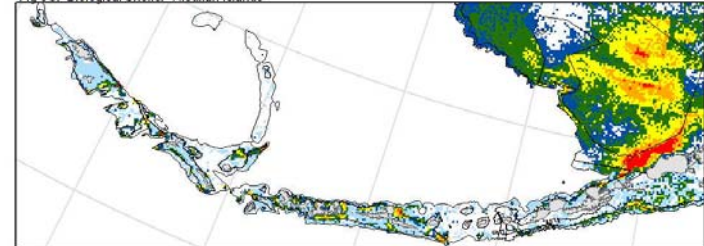


Fig 3C. Biological Shelter- Aleutian Islands



EFH Conservation Measures for Fishing Activities

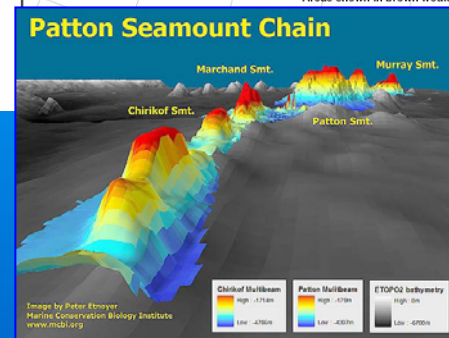
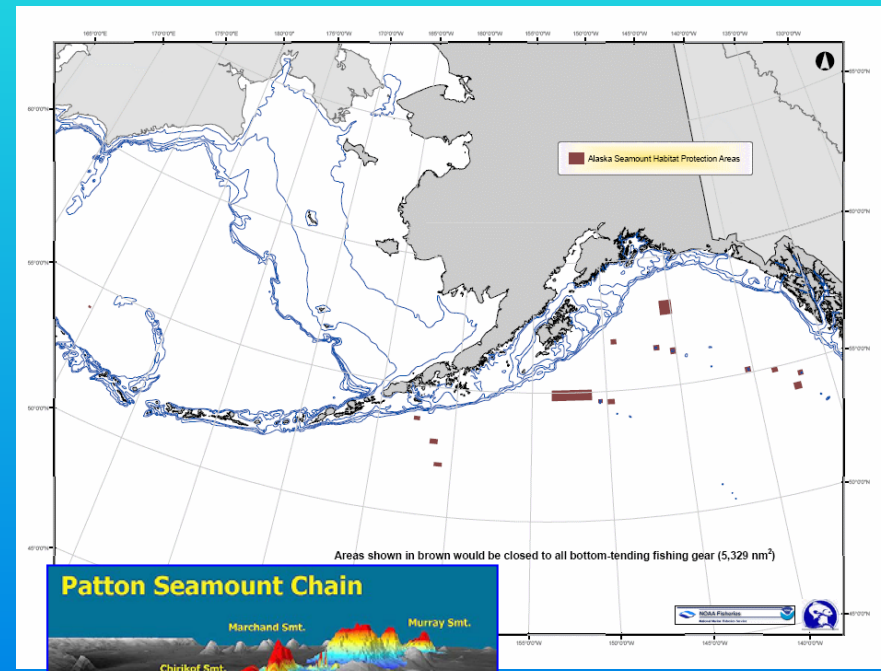
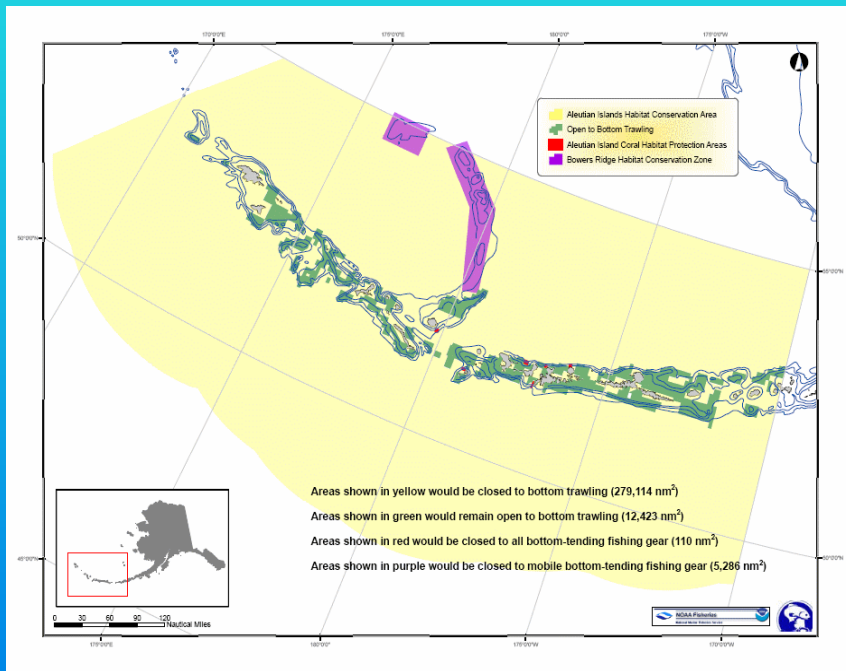
➤ EFH EIS concluded:

- No fishing activity is having more than a minimal effect on EFH and effects are not temporary in nature.

➤ Conservation Measures are:

- Based on analytical impacts assessment model.
- Diverse - Span a wide range of EFH and geographic scale.
- Pre-cautionary.

EFH Conservation Measures for Fishing Activities (continued)



EFH Basics – What is EFH?

How is Essential Fish Habitat authorized?

- The [Magnuson-Stevens Fishery Conservation and Management Act](#).
 - ✓ NMFS has direct authority to regulate fishery actions and impacts.
 - ✓ NMFS Consultations on developmental activities are advisory and promote a structured discussion of any adverse effects to EFH.

What is the definition of Essential Fish Habitat?

- '[Essential Fish Habitat](#)' means those waters and substrates necessary to fish for spawning, breeding, feeding or growth to maturity.

How is EFH described?

- EFH is described [using the best scientific information available](#) based on the general distribution of each species. EFH is identified with [text descriptions](#) and [delineated by maps](#) where sufficient information exists.

EFH Species

What species in Alaska have EFH identified?

- EFH is identified for only those species managed under a federal [Fishery Management Plan \(FMP\)](#).
- [Bering Sea and Aleutian Island Groundfish](#) Pacific Cod, Walleye pollock, etc
- [Gulf of Alaska Groundfish](#) Pacific Cod, Sablefish, Rockfish spp.
- [Bering Sea and Aleutian Island King and Tanner Crab](#) King & Tanner crab
- [Alaska Scallops](#)
- [Alaska Stocks of Pacific Salmon](#) All Five Pacific Salmon Stocks



EFH Consultation

What triggers an EFH Consultation?

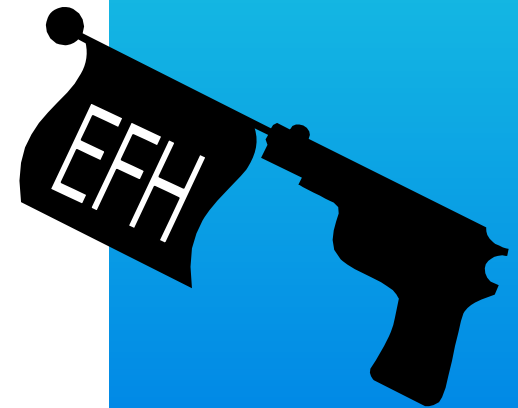
- An EFH Consultation is triggered when a federal agency, or its designee, determines that an action to be authorized, funded, or undertaken by the agency may adversely affect EFH.

What does 'adversely affect' mean?

- An 'adverse effect' is any impact that reduces the quality and/or quantity of EFH.

What types of actions may affect EFH?

- Actions (fill, dredge, etc...) associated with development projects such as port projects, roadways, airports, mining, oil & gas, etc..



EFH Consultation (continued)

What do federal agencies need to do?

- A federal action agency, or its official designee, must determine whether its actions may adversely affect EFH.
 - If the agency determines that an action may adversely affect EFH, the action agency must prepare an EFH Assessment.
 - If the action would not adversely affect EFH, then the agency should document this determination in its record. (No reason to contact NMFS)

What is in an EFH Assessment?

- An EFH Assessment is an objective review of the impact an action may have on fish and their habitat. An EFH Assessment includes:
 - a description of the action
 - an analysis of the potential adverse effects of the action on EFH and the managed species
 - the agency's conclusions regarding the effects of the action on EFH
 - and proposed mitigation, if applicable

EFH Consultation - How do we start?

When does EFH consultation begin?

- EFH consultation begins when a federal agency contacts NOAA Fisheries and requests review of an EFH Assessment.

Are there initial steps an action agency can take before contacting NOAA Fisheries? **Yes.**

- On-line information sources are available to assist federal agencies and the public.
 - [EFH Map Descriptions](#) depict the area of EFH for each life stage of fish managed under a Fishery Management Plan within the Gulf of Alaska, Bering Sea, and Aleutian Islands.
 - [EFH Text Descriptions](#) identify EFH for each life stage of managed fish species.
 - Staff

Can EFH Assessments be combined with other federal consultations or environmental review processes? **Yes.**

- NOAA Fisheries strongly encourages such efforts to streamline the consultation process. I.e., [National Environmental Policy Act \(NEPA\)](#), [Fish and Wildlife Coordination Act](#), [Clean Water Act](#), [Endangered Species Act \(ESA\)](#), and [Federal Power Act](#).

EFH Consultation – What happens next?

After a federal agency consults, what must NOAA Fisheries do?

- NOAA Fisheries will provide conservation recommendations to the action agency within 30 days of the proposed action, or within existing review procedures.

What is required of the federal action agency once it receives EFH conservation recommendations from NOAA Fisheries?

- Within 30 days after receiving a conservation recommendation from NOAA Fisheries, the federal agency is required to provide a detailed written response to NOAA Fisheries.
- This response must include a description of measures proposed for avoiding, mitigating, or offsetting the impact of the activity on EFH.
- Explanation is necessary for not following any recommendation(s), including scientific justification for any disagreements.

Are federal agencies required to accept NOAA Fisheries conservation recommendation(s)? **No.**

- EFH recommendations are advisory and non-binding to the federal action agency.

Why Consult? Or Why did we just go through all this?

- ✓ Highlights the requirement for Federal Action Agencies to comply with the MSA.
- ✓ Follows a regulatory process & fits within existing review procedures.
- ✓ Creates an open discussion of any effect(s) we, as a Public, may be have on EFH.
- ✓ Conserves and protects domestic & international commercial fish stocks and their habitats.

SEARCH | [CO2](#) | [Fisheries](#) | [Grants](#) | [Habitat](#) | [Jobs](#) | [News](#) | [Marine Mammals & Seabirds](#) | [Oil Spill](#) | [IFM/FMIS](#) | [Research](#)

In The News

- NOAA Fisheries and Partners Installing Artificial Reef Near Whittier
- NOAA Fisheries Seeks Comment on the Incidental Harassment of Marine Mammals in the Arctic Ocean
- Essential Fish Habitat (EFH) Assessments Approved and New EFH Descriptions in Effect

Hot Topics

- Comment period for the status review of Cook Inlet beluga whales
- Public meeting on a proposed cost recovery program for CO2 (this is already)
- BSAI Crab Rationalization and Reports

Site Resources

National Marine Fisheries Service (NMFS)
Alaska Region
PO Box 21988
Juneau, Alaska 99802-1988
PH: (907) 488-7224
FX: (907) 688-7240
Email: alaska.nmfs@noaa.gov

Alaska Weather

More Fisheries Websites

NMFS Headquarters

This is an official United States government website. The National Oceanic and Atmospheric Administration's National Marine Fisheries Service is an

NMFS Alaska

Groundfish, Crab and Scallop
Catch reports, harvest spots, CO2, landing, catch weighing, tows, season Mgmt., Recreational Reporting >>>

Fishery Permits and Online Services
Recreational permit, IFQ, Individual Fishing Quota, CO2 harvest, License Limitation, landing, tow, subsistence habitat >>>

Fisheries Regulations and Public Comment Periods
Overweight, IFQ, CO2, catch, violations, permit avoidance and proposed amendments >>>

Protected Species
Marine mammal and seabird observation >>>

Exxon Valdez Oil Spill
Research

Habitat Conservation
Marine habitat and EFH >>>

Activity Management
Environmental/Socio-Economic Analysis >>>

Maps
EFH, Ecoregion, protection measures, regulatory


EFH - Navigate Our Website

ALASKA REGIONAL OFFICE

Home | **Habitat Conservation Division**

Habitat Conservation Division

NMFS' Habitat Conservation Division (HCD) works in coordination with industries, stakeholder groups, government agencies, and private citizens to avoid, minimize, or offset the adverse effects of human activities on Essential Fish Habitat (EFH) and living marine resources in Alaska. This work includes conducting and/or reviewing environmental analyses for a large variety of activities ranging from commercial fishing to coastal development to large transportation and energy projects. HCD identifies technically and economically feasible alternatives and offers realistic recommendations for the conservation of valuable living marine resources. HCD focuses on activities in habitats used by federally managed fish species located offshore, nearshore, in estuaries, and in freshwater areas impacted by anadromous salmon.



Alaska Program Information

- Essential Fish Habitat (EFH) Information and Research
- Listing Procedures
- Marine Program Areas
- Habitat Conservation Division Accomplishments Fiscal Year: 2005, 2006
- Associated Agencies and Programs

Person Information:

Mani Oode
NMFS Alaska Region
P.O. Box 21663
705 West 9th Street
Juneau, AK 99802
PH: (907) 588-7138
Fax: (907) 588-7388
Email: Mani.Oode@noaa.gov

Jan Kurland
Matthew E.

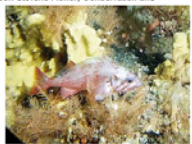
Anchorage:
Janet Hart
NMFS Alaska
PO Box 43
222 West
Anchorage
PH: (907)
Fax: (907)

Essential Fish Habitat (EFH) - Magnuson Stevens Fishery Conservation Management Act

Several of the following are PDF files which require the Adobe Acrobat Reader software to view, navigate and print. If you do not have the software, you may be unable to view the files.

In 1986 Congress added new habitat provisions to the Magnuson-Stevens Fishery Conservation and Management Act, the federal law that governs U.S. marine fisheries management. Under the Magnuson-Stevens Act, each fishery management plan must describe and identify EFH for the fishery, minimize to the extent practicable the adverse effects of fishing on EFH, and identify other actions to encourage the conservation and enhancement of EFH. Federal agencies must consult with NMFS regarding any action they authorize, fund, or undertake that may adversely affect EFH, and NMFS must provide conservation recommendations to federal and state agencies regarding any action that would adversely affect EFH.

As Congress noted in section 204(9) of the Magnuson-Stevens Act, "one of the greatest long-term threats to the viability of commercial and recreational fisheries is the continuing loss of marine, estuarine, and other aquatic habitats. Habitat considerations should receive increased attention for the conservation and management of fishery resources of the United States."



Northern rockfish (Sebastes borealis) swimming near hydrothermal vent structure near Adak Island, Alaska. Photo: Bob Stone, NMFS.

EFH Regulations

- 71 FR 14470, March 22, 2006
Proposed rule to identify and describe EFH, designate VMP/Cs, and include measures to minimize to the extent practicable adverse effects on EFH. Comment period through May 8, 2006.

Maps of Management Areas:

- Aleutian Islands Coral Habitat Protection Area
- Aleutian Islands Habitat Conservation Area
- Aleutian Islands Seamount Habitat Protection Area
- Gulf of Alaska Coral Habitat Protection Area
- Gulf of Alaska Slope Habitat Conservation Area

67 FR 2343, January 17, 2002

EFH Frequently Asked Questions

- EFH Frequently Asked Questions **NEW**
Many questions surround EFH. Please take a moment to review some of the more common questions and NMFS responses.

EFH Consultation

Federal agencies must consult with NMFS regarding any action authorized, funded, or undertaken, or proposed to be authorized, funded, or undertaken that may adversely affect EFH.

ALASKA

TOOLS

EFH Main Web Page



Essential Fish Habitat (EFH) - Magnuson Stevens Fishery Conservation Management Act

Several of the following are PDF files which require free *Adobe Acrobat Reader software* to view, navigate and print. Adobe also offers free tools for the visually disabled.

In 1996 Congress added new habitat provisions to the Magnuson-Stevens Fishery Conservation and Management Act, the federal law that governs U.S. marine fisheries management. Under the Magnuson-Stevens Act, each fishery management plan must describe and identify EFH for the fishery, minimize to the extent practicable the adverse effects of fishing on EFH, and identify other actions to encourage the conservation and enhancement of EFH. Federal agencies must consult with NMFS regarding any action they authorize, fund, or undertake that may adversely affect EFH, and NMFS must provide conservation recommendations to federal and state agencies regarding any action that would adversely affect EFH.



Northern rockfish (*Sebastes polyspinis*) surrounded by hydroids, bryozoans, and sponges - near Adak Island, Alaska. Photo: Bob Stone, NMFS.

As Congress noted in section 2(a)(9) of the Magnuson-Stevens Act, "One of the greatest long-term threats to the viability of commercial and recreational fisheries is the continuing loss of marine, estuarine, and other aquatic habitats. Habitat considerations should receive increased attention for the conservation and management of fishery resources of the United States."

EFH Regulations

- [71 FR 14470, March 22, 2006](#)

Proposed rule to identify and describe EFH, designate HAPCs, and include measures to minimize to the extent practicable adverse effects on EFH. Comment period through May 8, 2006.

Maps of Management Areas:

- [Aleutian Islands Coral Habitat Protection Area](#)
- [Aleutian Islands Habitat Conservation Area](#)
- [Aleutian Islands Seamount Habitat Protection Area](#)
- [Gulf of Alaska Coral Habitat Protection Area](#)
- [Gulf of Alaska Slope Habitat Conservation Area](#)

- [67 FR 2343, January 17, 2002.](#)

Final rule for implementing the EFH provisions of the

EFH Frequently Asked Questions

- [EFH Frequently Asked Questions](#) **NEW!**

Many questions surround EFH. Please take a moment to review some of the more common questions and NMFS responses.

EFH Consultation

Federal agencies must consult with NMFS regarding any action authorized, funded, or undertaken, or proposed to be authorized, funded, or undertaken that may adversely affect EFH.

ALASKA

• [Frequently Asked Questions](#)

EFH Information – FAQ's



Frequently Asked Questions About Essential Fish Habitat (EFH)

Several of the following are PDF files which require free Adobe Acrobat Reader software to view, navigate and print. Adobe also offers free tools for the visually disabled.

FREQUENTLY ASKED QUESTIONS

What is EFH?

1. How is Essential Fish Habitat authorized?
2. What is the definition of Essential Fish Habitat?
3. How is EFH described?
4. What species in Alaska have EFH identified?
5. What is a Habitat Area of Particular Concern (HAPC)?
6. When was EFH information last updated?
7. Has EFH information changed?
8. Who are the EFH contacts in Alaska?

What about EFH Consultations?

1. What triggers an EFH Consultation?
2. What does "adversely affect" mean?
3. What are a few examples of actions that affect EFH?
4. What do federal agencies need to do?
5. What is in an EFH Assessment?
6. Is the State of Alaska required to consult on EFH?
7. Are private landowners required to consult for projects on their land?
8. When does EFH consultation begin?
9. Where does EFH Consultation Guidance exist?
10. Are there some initial steps an action agency can take before contacting NOAA Fisheries?
11. Can EFH Assessments be combined with other federal consultations or environmental review processes?
12. If EFH overlaps with ESA, are two individual consultations with NOAA Fisheries considered?
13. After a federal agency consults, what must NOAA Fisheries do?
14. What is required of the federal action agency once it has received EFH conservation and enhancement recommendations from NOAA Fisheries?
15. Are federal agencies required to accept NOAA Fisheries conservation recommendation(s)?

GENERAL INFORMATION ABOUT EFH

EFH Web-Map Interface

NOAA Fisheries -- EFH Interactive Map

Zoom In Zoom Out Zoom To Lat/Lon Full Extent Pan Print Marine Fish Freshwater Salmon ? HELP

Refresh Map

NMFS Areas

NMFS Areas
 Major Rivers

EFH Levels

- BSAI Crab
- BSAI Groundfish
- GOA Groundfish
- Salmon
- Scallops

Bathymetry Levels

- Shelf
- Slope

EFH maps are complementary to EFH text descriptions. Thus, EFH maps should not be used as the only source to describe EFH. Please refer to the [EFH text descriptions](#) for a complete description.

Reminder:
To use the Marine Fish Search tool, select the Marine Fish Tool and **hold down the ctrl key. Continue to hold the ctrl key down throughout all steps - this will enable popups to display with EFH species information.** Then place search crosshairs over the area you are interested in, and click the left mouse button once (still holding down the ctrl key). Wait for an EFH species list

More EFH Info Help? Site Contacts Recent Updates AK Maps/Images Disclaimer Privacy Policy

EFH Tutorial

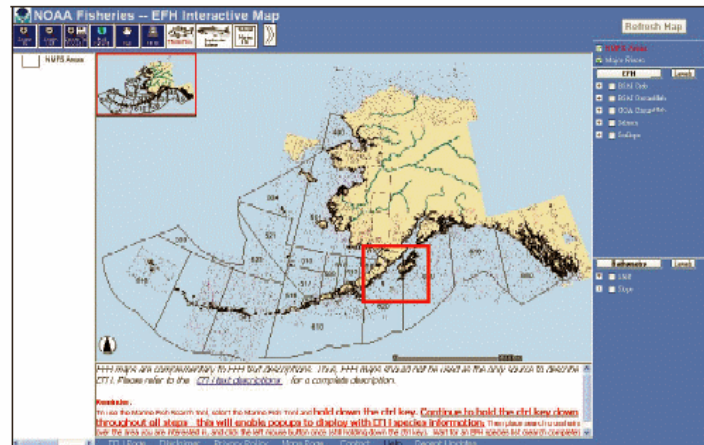
Marine EFH Search Tutorial

EFH Species Search Steps

1. Locate the **tool bar** at the top of the **EFH map interface window** and click the **Zoom-In tool button** (see below).



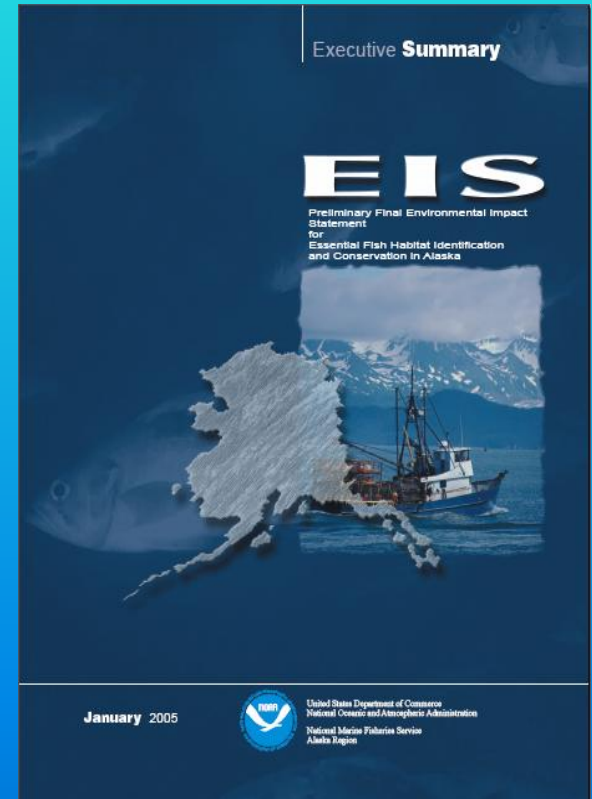
2. Select the area you are interested in on the map by using the **Zoom-In tool** to create-a-box around the area. To do so, hold down the right mouse key and drag a square or rectangle (see image below). Then release the mouse button.



EFH Information – Environmental Impact Statement

- EFH Text Descriptions [Appendix D]
- EFH Map Descriptions [Appendix D]
- HAPC [Appendix J]

<http://www.fakr.noaa.gov/habitat/seis/efheis.htm>



EFH Information

Appendix D – EFH Text Descriptions

Appendix D
EFH Text and Map Descriptions for
Federally Managed Species of the Alaska
Region

Prepared by
National Marine Fisheries Service

April 2005



Appendix J – HAPC

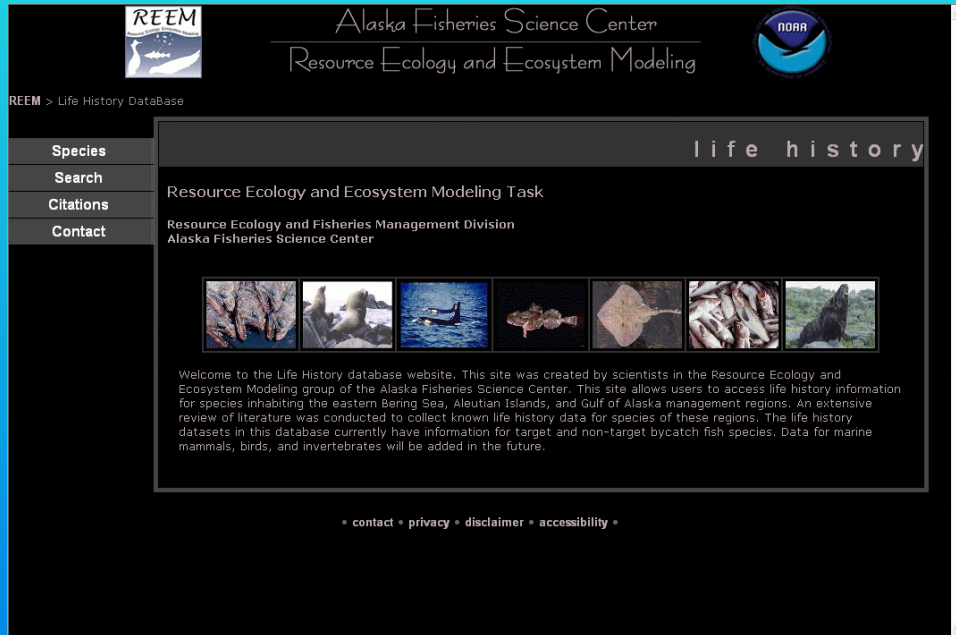
Appendix J
Proposed HAPC Identification Process

Prepared by
North Pacific Fishery Management Council

April 2005



EFH Information – Fish & Science



REEM > Life History DataBase

Alaska Fisheries Science Center
Resource Ecology and Ecosystem Modeling

NOAA

Species
Search
Citations
Contact

life history

Resource Ecology and Ecosystem Modeling Task

Resource Ecology and Fisheries Management Division
Alaska Fisheries Science Center

Welcome to the Life History database website. This site was created by scientists in the Resource Ecology and Ecosystem Modeling group of the Alaska Fisheries Science Center. This site allows users to access life history information for species inhabiting the eastern Bering Sea, Aleutian Islands, and Gulf of Alaska management regions. An extensive review of literature was conducted to collect known life history data for species of these regions. The life history datasets in this database currently have information for target and non-target bycatch fish species. Data for marine mammals, birds, and invertebrates will be added in the future.

• contact • privacy • disclaimer • accessibility •

<http://access.afsc.noaa.gov/reem/LHWeb/index.cfm>

Appendix F Essential Fish Habitat Assessment Reports

Prepared by
National Marine Fisheries Service

April 2005

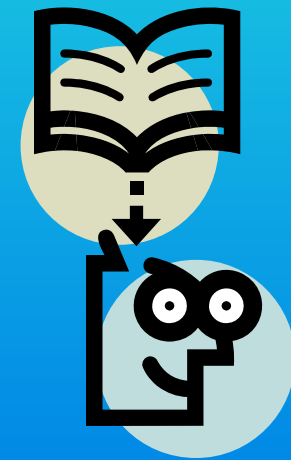
EFH Consultation Guidance

ESSENTIAL FISH HABITAT CONSULTATION GUIDANCE

Version 1.1

April 2004

National Marine Fisheries Service
Office of Habitat Conservation
Silver Spring, Maryland



EFH Information – Appendix G

Non-Fishing Activities

Recommended EFH Conservation Measures – Road Building and Maintenance

1. To the extent practicable, avoid locating roads near fish-bearing streams. Roads should be sited to avoid sensitive areas such as streams, wetlands, and steep slopes.
2. Incorporate appropriate erosion control and stabilization measures into road construction plans to reduce erosion potential.
3. Build bridges when possible. If culverts are to be used, they should be sized, constructed, and maintained to match the gradient and width of the stream, so as to accommodate design flood flows, and they should be large enough to provide for migratory passage of adult and juvenile fishes. If appropriate, consider using the culvert guidelines contained in the Alaska Department of Fish and Game and the Alaska Department of Transportation and Public Facilities Fish Pass Memorandum of Agreement, August, 2001 (http://www.sf.adg.state.ak.us/SARR/fishpassage/pdfs/dot_adfg_fishpass080301.pdf).
4. Locate stream crossings in stable stream reaches.
5. Design bridge abutments to minimize disturbances to stream banks and place abutments outside of the floodplain whenever possible.
6. To the extent practicable, avoid road construction across alluvial floodplains, mass wastage areas, or braided stream bottom lands unless site-specific protection can be implemented to ensure protection of soils, water, and associated resources.
7. Avoid side-casting of road construction and maintenance materials on native surfaces and into streams.
8. To the extent practicable, use native vegetation in stabilization plantings.
9. Ensure that maintenance operations avoid adverse affects to EFH.



YUKON ARCHIVES

NMFS EFH Correspondence



EFH Consultation and Related Correspondence Correspondence from August 2002 to Present

Several of the following are PDF files which require free Adobe Acrobat Reader software to view, navigate and print. Adobe also offers free tools for the visually disabled.

Search Habitat Correspondence:

[A](#) | [B](#) | [C](#) | [D](#) | [E](#) | [F](#) | [G](#) | [H](#) | [I](#) | [J](#) | [K](#) | [L](#) | [M](#) | [N](#) | [O](#) | [P](#) | [Q](#) | [R](#) | [S](#) | [T](#) | [U](#) | [V](#) | [W](#) | [X](#) | [Y](#) | [Z](#)

A

- ADOT&PF Mitigation Letter
- AEFH Mitigation Memorandum to Bill Ballard
- AK DEC Sonafrank letter Residue Review
- AK DNR request for review of AK Coastal Management Program
- AK Marine Conservation Council
- Abbott Loop Road to East 48th Ave Project EFH
- Acute and Chronic Toxicity of Hydrocarbons in Alaska
- Airport Improvement Projects Involving Wetlands
- Akutan Small Boat Harbor Final EIS
- Alaska Water Quality Standards
- Alaska Water Quality Standards Proposed Revisions
- Aleknagik Wood River Bridge EFH
- Aleutian Island portion of Alternative 5B EFH/EIS modification
- Aleutian Islands Alternative 5b EFH EIS
- Allison Lake Hydroelectric Project Motion to Intervene
- Allison Lake Motion to Intervene
- Alpine Corps Permit POA 2005-1576
- Alpine Satellite Development Plan DEIS 0401-02
- Alternative Permit Processing Procedure Special Public Notice
- Amalga Harbor Relocation of Dredge Spoil Site
- Anchor River Diversion and Bridge
- Anchorage Marine Terminal Redevelopment EA
- Anchorage Marine Terminal Redevelopment EA
- Anchorage Marine Terminal Redevelopment EA Draft
- Anchorage Marine Terminal Redevelopment Environmental Assessment
- Anchorage Marine Terminal Redevelopment Environmental Assessment
- Anchorage Water and Wastewater Utility DEA
- Angoon Hydroelectric Project Scoping
- Aniak Airport Master Plan State Project
- Aquatic Farm Application Notices
- Atka Alaska Proposed Bulk Fuel Upgrade Project
- Auk Bay POA 2005-1144-1
- Auke Bay POA 2005-1144-1

EFH Information - Websites

- EFH Information
 - <http://www.fakr.noaa.gov/habitat/efh.htm>
- EFH Web Mapping Interface
 - <http://akr-mapping.fakr.noaa.gov/Website/EFH/viewer.htm?simple>



All EFH Links Available through FAKR Website

<http://www.fakr.noaa.gov>

Let's Go Online !!