



U.S. Department of Energy  
Emergency Support Function 12

Hurricane Ike Situation Report # 16

September 23, 2008 (12:00 PM EDT)

[http://www.oe.netl.doe.gov/emergency\\_sit\\_rpt.aspx](http://www.oe.netl.doe.gov/emergency_sit_rpt.aspx)

Summary

Electricity		
Impacted State	Electric Customer Outages	% of State Out
Kentucky	4,610	< 1%
Ohio	25,309	< 1%
Texas	745,241	7%
<b>TOTAL:</b>	<b>775,160</b>	
Petroleum & Natural Gas		
	Amount	% Capacity Out*
Crude Oil Production Shut-In (b/d)	995,684	76.6%
Natural Gas Production Shut-in (mmcf/d)	4,849	65.5%
Refinery Capacity Shut down (b/d)	1,698,220	NA

Notes:

Total state customers are based on 2006 EIA Customer Data.

Note: due to a large number of service providers, including investor owned utilities and cooperatives, the number of customer outages reported may not be comprehensive.

Source:

Crude Oil and Natural Gas Production Data from Minerals Management Service.

Refinery Status confirmed by company or on company web site and through various trade press sources.

\* % capacity out represents percent of production capacity in the Gulf of Mexico.

Highlights:

- As of 9:00 AM EDT September 23, there are an estimated 775,160 customers without power. The largest outages remain in Texas where 745,241 customers have no electricity service. Across all States affected by Ike, power has been restored to over 102,000 customers since Ike Situation Report No. 15 yesterday. Outages in heavily impacted Texas counties as reported by the Texas PUC as of 9:00 AM September 23 include:
  - Harris – 563,949
  - Galveston – 61,257
  - Brazoria – 40,957
  - Jefferson – 19,233
  - Orange – 102
- As of 5:00 AM EDT, September 22, the Nuclear Regulatory Commission reported that Entergy’s River Bend nuclear unit in LA began its restart. The unit was shutdown on September 1 on the approach of Hurricane Gustav.
- As of 8:00 AM EDT September 23, vessels with drafts over 34 feet are limited to daylight transit only from Sims Bayou to the Houston ship channel turning basin. **The Sabine and Neches**



# U.S. Department of Energy Emergency Support Function 12

Channel going into the Port Arthur area is now open to vessels to project depth for daylight transit and limited to drafts of 33 feet at night. Part of the Gulf Intracoastal Waterway (GIWW) in TX has re-opened, but it is still closed from mile marker 350 to 319 and has some closures in LA as well. The Calcasieu Channel into Lake Charles, LA is open to vessels with a draft of 38' or less.

- Gasoline stations continue to re-open in the hurricane affected areas as power is restored. As of 3:30 PM September 21, approximately 90 percent of Shell-branded stations in Houston and Beaumont were now open, which is up from September 20 when 75 percent of their gasoline stations were reported open. On September 23, ConocoPhillips reports that its retail outlets in southeast Texas area are being resupplied as electrical power is restored.

## ESF 12 Actions:

- ESF-12 is staffing the FEMA Region VI Joint Field Office (JFO) in Austin, TX and the National Response Coordination Center (NRCC) in Washington, DC. In addition, a petroleum expert has been deployed to San Antonio, TX to serve as part of FEMA's National Incident Management Assistance Team (IMAT) and an electricity expert has been deployed to join the Region IV IMAT in Houston, TX. The FEMA Region VI JFO in Baton Rouge, LA and the FEMA Region VI Regional Response Coordination Center in Austin, TX has been demobilized.

## Situation Report Detail

### Petroleum & Gas Information

Oil & Gas Offshore Production Shut In Status for Affected Area			
Location	Amount Shut In	Pre-event Production	% Shut In
Crude Oil (B/D)	995,684	1,300,000	76.6%
Natural Gas (MMCF/D)	4,849	7,400	65.5%

Source: Minerals Management Service

- As of September 22, the Minerals Management Service (MMS) reports 4,849 million cubic feet per day (MMcf/d) of the Gulf's natural gas production remains shut-in, equivalent to 65.5 percent of the Gulf production. MMS reports 995,864 barrels/day of the Gulf's crude production remains shut-in, equivalent to 76.6 percent of the Gulf's crude production. A total of 225 production platforms, or 31.4 percent of the Gulf's 717 manned platforms, remain evacuated. Personnel from 7 rigs, representing 5.8 percent of those operating in the region, remain evacuated.
- On September 23, the Louisiana's Department of Natural Resources reports that 32,477 b/d or 21 percent of the normal Louisiana oil production has been restored. Operators in 17 parishes and in-State offshore areas normally produce 155,767 barrels/day (the numbers are in addition to MMS reports of Federal offshore production). Shut-in oil production is 89,885 b/d and the status of remaining 33,405 b/d is unknown. The estimated amount of restored gas production is 504



**U.S. Department of Energy  
Emergency Support Function 12**

MMcf/d or 31 percent of the daily gas production capacity, which is 1,642 MMcf/d. The estimated amount of shut-in gas production is 825 MMcf/d; the status of the remaining 312 MMcf/d has not been confirmed.

- On September 19, the North Dakota Governor issued an Executive Order to permit the use of winter blend gasoline because of supply issues caused by Hurricanes Ike and Gustav. The winter blend gas would not have been available until October 1.
- States in the Southeast have issued volatility waivers allowing the use of 13.5 RVP gasoline through October 31, 2008. These States, with the exception of certain areas, would normally use 11.5 RVP gasoline.
- Centennial pipeline reported that it restarted operations on September 21 after power was restored at Beaumont Station. The line was down 10 days due to Hurricane Ike. As of 3:00 PM September 22, NuStar's Corpus Christi to Houston Products Pipeline is running at full rate. Magellan reported on September 22 that all Texas and Louisiana terminals have returned to normal operations except the facility at Galena Park, Texas. In the past 24 hours DOE has confirmed that three product pipelines (Centennial, Explorer, and TEPPCO) have ramped up fuel movements from a status of partial shutdown to one of reduced runs. See pipeline table below

Pipelines in the Path of Gustav / Ike as of 9/23/08 10:00 AM EDT								
Type	Name	Start	Terminus	Capacity (barrels/day)	Shut Down	Partial Shut Down	Reduced Rates	Operating
Crude	Capline	LA	IL	1,200,000				1,200,000
Crude	LOOP/Locap	LA	LA	1,200,000				1,200,000
Crude	Genesis gathering/refinery	TX, MS, AL	TX, MS, AL	NA	NA			
Crude	Marathon gathering	GOM	LA/TX	NA	NA			
Crude	Sunoco Logistics/Western	TX	TX	NA	NA			
Product	Centennial	TX	IL	210,000			210,000	
Product	Central Florida	FL	FL	115,000				115,000
Product	Colonial	TX	NJ	2,400,000			2,400,000	
Product	CP Seaway Products	TX	OK	85,000	85,000			
Product	CP Sweeny to Pasadena	TX	TX	115,000		115,000		
Product	Explorer	LA/TX	IN	700,000			700,000	
Product	Longhorn	TX	TX	72,000				72,000
Product	Magellan	TX	CO, MN, WI, IL	120,000			120,000	
Product	NuStar/Texas Gulf Coast	TX	TX	100,000				100,000
Product	Plantation	LA	VA	600,000			600,000	
Product	TEPPCO	TX	PA, NY	330,000			330,000	
NGL	Dixie	TX	NC	100,000		100,000		
NGL	Enterprise	TX	IL, MN	641,000		641,000		

Source: Status of pipelines from Association of Oil Pipe Lines; Capacity data from company web sites

- On September 20, the U.S. Department of Energy reported delivery of 125,000 barrels of emergency exchange oil from the Strategic Petroleum Reserve to Alon USA's Krotz Springs, Louisiana refinery. Following completion of the Alon delivery, a cargo of 300,000 barrels will be delivered to Placid Oil's Port Allen, Louisiana refinery.
- Six refineries remain shut down as of 10 AM EDT September 23 in the Port Arthur and Texas City areas, with a total operable capacity of 1.7 million b/d. Motiva and BP both reported to the



## U.S. Department of Energy Emergency Support Function 12

Texas Commission on Environmental Quality that they planned to restart units on Sunday morning September 21 at their shutdown refineries in Port Arthur, TX and Texas City, TX respectively. **These two restarts are not confirmed. As of 8:03 AM EDT September 23, Marathon's Texas City, Texas, refinery is still in the process of repairing equipment.** Electrical power was restored to the refinery on September 16, but they have been unable to restart. See table below for status of refineries.

Refineries in the Path of Gustav / Ike as of 9/23/08 10:00 AM EDT							
Refinery Impacted	Location	Storm	Capacity (B/D)				
			Operating	Shut Down	Restarting	Reduced Runs	Back to Normal
<b>Pascagoula/Mobile Region</b>							
Chevron	Pascagoula, MS	G	330,000				330,000
Shell	Saraland, AL	-	86,000				
<b>Pascagoula/Mobile Total</b>			<b>416,000</b>	<b>0</b>	<b>0</b>	<b>0</b>	<b>330,000</b>
<b>Lower Mississippi River Region</b>							
Alon (Formerly Valero)	Krotz Springs, LA	G	80,000			80,000	
Chalmette Refining	Chalmette, LA	G	192,760				192,760
ConocoPhillips	Belle Chasse, LA	G	247,000				247,000
ExxonMobil	Baton Rouge, LA	G	503,000				503,000
Marathon	Garyville, LA	G	256,000				256,000
Motiva	Norco, LA	G	236,400				236,400
Motiva	Convent, LA	G	235,000			235,000	
Murphy Oil	Meraux, LA	G	120,000				120,000
Placid Refining	Port Allen, LA	G	56,000				56,000
Shell	Saint Rose, LA	G	55,000			55,000	
Valero	Norco, LA	G	185,003				185,003
<b>Lower Mississippi River Total</b>			<b>2,166,163</b>	<b>0</b>	<b>0</b>	<b>370,000</b>	<b>1,796,163</b>
<b>Lake Charles Region</b>							
Calcasieu	Lake Charles, LA	G+I	78,000			78,000	
Citgo	Lake Charles, LA	G+I	429,500			429,500	
ConocoPhillips	Westlake, LA	G+I	239,400			239,400	
<b>Lake Charles Total</b>			<b>746,900</b>	<b>0</b>	<b>0</b>	<b>746,900</b>	<b>0</b>
<b>Port Arthur Region</b>							
ExxonMobil	Beaumont, TX	G+I	348,500	348,500			
Motiva	Port Arthur, TX	G+I	285,000	285,000			
Total Petrochemicals	Port Arthur, TX	G+I	232,000	232,000			
Valero (formerly Premcor)	Port Arthur, TX	G+I	289,000	289,000			
<b>Port Arthur Total</b>			<b>1,154,500</b>	<b>1,154,500</b>	<b>0</b>	<b>0</b>	
<b>Houston/Galveston Region</b>							
BP	Texas City, TX	I	467,720	467,720			
ConocoPhillips	Sweeny, TX	I	247,000		247,000		
Deer Park	Deer Park, TX	I	329,800		329,800		
ExxonMobil	Baytown, TX	I	567,000		567,000		
Houston Refining	Houston, TX	I	270,600		270,600		
Marathon	Texas City, TX	I	76,000	76,000			
Pasadena Refining	Pasadena, TX	G+I	100,000		100,000		
Valero	Houston, TX	I	83,000		83,000		
Valero	Texas City, TX	I	199,500		199,500		
<b>Houston/Galveston Total</b>			<b>2,340,620</b>	<b>543,720</b>	<b>1,796,900</b>	<b>0</b>	
<b>Corpus Christi Region</b>							
Citgo	Corpus Christi, TX	I	156,000				156,000
Flint Hills Resources	Corpus Christi, TX	I	288,126				288,126
Valero	Corpus Christi, TX	I	142,000				142,000
Valero	Three Rivers, TX	I	93,000			93,000	
<b>Corpus Christi Total</b>			<b>679,126</b>	<b>0</b>	<b>0</b>	<b>93,000</b>	<b>586,126</b>
<b>TOTAL</b>			<b>7,503,309</b>	<b>1,698,220</b>	<b>1,796,900</b>	<b>1,209,900</b>	<b>2,712,289</b>

**Note:** The table does not include all refineries in the PADD III, Gulf Coast Region.

Storm column indicates hurricanes impacting refineries: G = Gustav; I = Ike, G+I = Both storms, and - = no impact.

**Sources:** Confirmed by company or on company web site. Various trade press sources.



## U.S. Department of Energy Emergency Support Function 12

- As of 10:15 AM EDT September 23, eleven of the 26 major natural gas pipelines in the Gulf Coast area continue to report complete shut-in of their systems. The remaining pipelines report that portions of their systems remain at reduced levels of gas flow due to Hurricane Ike. Damage assessments continue to be performed both at onshore and offshore facilities and the pipelines continue to provide updates to their customers on those points along the systems that were impacted and are now approved to flow gas as the integrity of the line was verified. See table below.
- As of 4:30 PM EDT September 22, Discovery Gas Transmission (DGT) notified its customers that an 18-inch diameter gathering line lateral was torn from its interconnection with the 30-inch mainline of DGT's offshore system. The damage to the offshore facilities will prevent DGT to receive gas flow along its entire mainline for a minimum of one month. DGT also notified its customers that all receipt points and some delivery points onshore are accepting gas flow at this time.
- As of 1:00 PM EDT September 22, Garden Banks Gas Pipeline reports that all repairs to its system have been completed and the pipeline is ready to return to service; however, the pipeline will remain shut-in due to the unavailability of interconnections along its system. There is no time frame for when service will commence at this time.
- There are 39 major natural gas processing plants in the path of Hurricane Ike with a total operating capacity of 17.7 billion cubic feet per day (Bcf/d). As of 10:30 AM EDT September 23, the Energy Information Administration (EIA) has confirmed that 7 plants remain shut down which includes those plants still impacted from Gustav, totaling an operating capacity of 4.68 Bcf/d (26 percent of the capacity in Hurricane Ike's path). In addition, EIA reports 24 plants have resumed operations at reduced or normal levels with a total operating capacity of 9.20 Bcf/d. Seven plants are capable to restart (totaling 3.59 Bcf/d operating capacity) once power is restored and/or upstream gas flow are sufficient. See table below



**U.S. Department of Energy  
Emergency Support Function 12**

<b>Force Majeure / Critical Notice Posting by Natural Gas Pipelines as of 9/23/08 10:00 AM EDT</b>		
<b>Pipeline Name</b>	<b>Time Stamp</b>	<b>Notice (Status)</b>
ANR Pipeline Co.	9/22/08	Houston office has reopened (Sept 22). ANR Southeast Area locations along system are at restrictions and only limited delivery capacity is available as a result of current operational conditions and line pressures.
Chandeleur Pipeline Co.	9/21/08	Operationally Scheduled Volumes indicates pipeline is flowing at 70% of pre hurricane levels.
Columbia Gulf Transmission	9/21/08	Flow from offshore points has been reduced to approximately 50% of normal operating capacity.
Destin Pipeline Co.	9/18/08	Pascagoula processing plant Force Majeure declared Sept. 15 now lifted and flows will resume to normal.
Discovery Gas Transmission	9/22/08	Damage to offshore system that will prevent the receipt of all offshore gas for a minimum of one month. The damage has occurred on the 18 ST 200 lateral, which has been torn away from the 30" mainline at ST 231. Onshore delivery & receipt points will continue to accept flow.
Enbridge (UTOS)	9/22/08	All UTOS facilities remain under Force Majeure and are currently down and all points are shut-in. Crew is assessing damage at the UTOS Station 44 and no time estimate on availability.
Garden Banks Gas Pipeline	9/22/08	Garden Banks' pipeline facilities are essentially ready for return to service; however, the pipeline remains shut-in because there is no current availability of downstream outlets for condensate, which includes interconnects with ANR, Tennessee, Transco, and Sea Robin all of which are unavailable.
High Island Offshore System	9/22/08	Force Majeure from Sept 10 remains in effect - HIOS is currently securing equipment to locate a potential leak on its 42-inch line north of HIA-264. The equipment is expected to be on location today. No time frame for restoration of service at this time.
KinderMorgan (Texas & Tejas)	9/20/08	All firm storage customers can resume injections at 100% of their firm injection rights. There is no interruptible space available at this time.
Manta Ray Offshore Gathering	9/22/08	Pipeline remains under Force Majeure. Repairs to the 16" line are nearing completion; re-pressuring of the line will commence once repairs are complete. Replacement of controls at SS332a for both the 14" and 16" is underway. Partial service expected by Thursday, Sept 25.
Mississippi Canyon Pipeline	9/20/08	Force Majeure is lifted. All repairs to the system have been completed and gas flow can resume Sept 21. Two points remain unavailable at this time (Tennessee Gas Pipeline & Venice Gas Plant).
Natural Gas Pipeline Co of America	9/22/08	Limited capacity available (constraints) for deliveries located along entire system of NGPL.
Nautilus Pipeline Co.	9/22/08	Force Majeure remains in effect. Burns Point facility is operationally available; however, all receipt points must remain shut-in. Service expected to commence by Thursday, Sept 25.
Sabine Pipe Line (Henry Hub)	9/22/08	Force Majeure has been lifted for some additional points along the system. Henry Hub continues to operate on partial compression and the pipeline is closely monitoring its system.
Sea Robin Pipeline Co.	9/17/08	Sea Robin will begin accepting flow on Sep 22, 2008. The Hess Processing Plant will operate at a minimum volume of 150,000 Dth/d until at least Sep 24, 2008.
Southern Natural Gas Co.	9/22/08	The interconnection point with Sabine Pipeline that sustained damage due to Ike has been repaired and has been restored to full service. Southern estimates that 340 MMcf/d of supply remains shut-in.
Stingray Pipeline Co.	9/22/08	Force Majeure remains in effect and all receipt points remain shut-in. Road access is now open and crews have arrived on site. Some offshore facilities have been repaired and other repairs continue specifically at the WC 509. No time frame for restoration of service at this time.
Tennessee Gas Pipeline	9/22/08	Due to power restoration, Force Majeure at Station 25, Cleveland, TX has been lifted. Restrictions on portions of facilities remain in effect.
Texas Eastern Transmission	9/23/08	TE estimates that producers have shut-in 400-500 MMcf/d of supply on its system. Damage assessments continue on facilities impacted by Gustav and Ike. Receipt points along the Cameron System and South Pass line remain at zero flow. Several compressor stations continue to run on backup generators as commercial power is unavailable.
Texas Gas Transmission	9/17/08	All systems on the pipeline are operational, but they are closely monitoring receipt points.
Transcontinental Gas Pipe Line	9/22/08	No longer instituting the Emergency Gas Supply Procedures. Partial flow from the offshore Southeast LA lateral will commence today. Additional repairs are needed before flow can commence on onshore Southwest LA lateral. Offshore points along Southwest LA lateral will take several weeks to return to normal operational conditions. Inspections are still ongoing for the Central LA lateral offshore points with several points that remain shut-in.
Trunkline Gas Pipeline	9/19/08	Declared Force Majeure event impacting gas flow deliveries on the ELA (East Louisiana). Flooding at Centerville Compressor Station limiting gas flow to Henry Hub. Pipeline integrity to Patterson has been confirmed and 11 receipt points have been cleared for flow.
Venice Gathering System	9/18/08	Remains shut-in from the effects of Gustav. Processing plant will not be available until first week in October – gas flow will remain at zero until plant is fully operational.
Dauphin Island Gathering	9/16/08	Force Majeure lifted as Mobile Bay (Duke) processing plant completed maintenance. System will resume normal operations.
Black Marlin Pipeline	9/15/08	Force Majeure declared Friday, Sept 12. - No gas flow being accepted.
Gulf South Pipeline	9/18/08	Critical Period has been lifted as of gas day Sept 18.
Northern Natural	9/22/08	Matagorda Offshore Pipeline System accepting gas flow at normal levels.



**U.S. Department of Energy  
Emergency Support Function 12**

Natural Gas Processing Plants in the Path of Ike & Gustav as of 9/23/08 10:30 AM EDT							
Plant Name	Location	Impact	Capacity (million cubic feet per day) <sup>1</sup>				
			Design System Operation	Shut Down	Capable to Restart <sup>2</sup>	Operating at Reduced Level	Normal
<b>EAST LA / AL</b>							
Yscloskey	St. Bernard, LA	G	1,850	1,850			
Venice	Plaquemines, LA	G	1,300	1,300			
Pelican	St. Mary, LA	G	600		600		
Larose	Lafourche, LA	G + I	600			600	
Plaquemine	Iberville, LA	G	225		225		
Burns Point	St. Mary, LA	G	160		160		
Mobile Bay (Duke)	Mobile, AL	M	300				300
<b>WEST LA / EAST TX</b>							
Eunice	Acadia, LA	G + I	1,200			1,200	
Sea Robin	Vermilion, LA	G + I (M)	950		950		
Bluewater	Acadia, LA	G + I	950		950		
Cameron Meadows	Cameron, LA	G + I	500	500			
Iowa	Jefferson Davis, LA	G + I	500				500
Grand Chenier II	Cameron, LA	G + I	400		400		
Sabine Pass	Cameron, LA	G + I	300	300			
Stingray	Cameron, LA	G	300	300			
Lowry	Cameron, LA	G + I	265			265	
Barracuda	Cameron, LA	G + I	225	225			
Gillis	Calcasieu, LA	G + I	180			180	
Dubach	Lincoln, LA	G	175				175
East Texas (MarkWest)	Panola, TX	I	780				780
East Texas (DCP)	Panola, TX	-	750				750
Godley (Forth Worth II)	Johnson, TX	I	300			300	
Port Arthur	Jefferson, TX	G + I	200			200	
Carthage	Panola, TX	I	175				175
Indian Springs	Polk, TX	I	150				150
<b>CENTRAL EAST TX</b>							
Houston Central	Colorado, TX	-	700				700
Markham	Matagorda, TX	G + I	300		300		
Matagorda <sup>3</sup>	Matagorda, TX	G + I	250	-	-	-	-
Armstrong	De Witt, TX	I	250				250
Point Comfort	Calhoun, TX	I (M)	200	200			
Old Ocean	Brazoria, TX	I	200				200
Wilcox	Lavaca, TX	I	220				220
La Grange	Fayette, TX	I	200			200	
Waskom	Harrison, TX	-	270				270
<b>SOUTH EAST TX</b>							
King Ranch	Kleberg, TX	-	925				925
Shoup	Nueces, TX	-	290				290
La Gloria	Jim Wells, TX	-	265				265
Gregory	San Patricio, TX	I	150				150
Gulf Plains	Nueces, TX	-	150				150

**Note:** Storm column indicates hurricanes impacting processing plant: G = Gustav; I = Ike, G+I = Both storms, M = Maintenance, and - = no impact  
 "N/A" (Not Available or Confirmed) identifies those plants that are in the path of Ike that have not yet been confirmed of their status.

<sup>1</sup> The capacity represents the design capacity of the plants and does not represent the actual gas flow through these plants.

<sup>2</sup> Confirmed plants capable to restart after electricity is restored or when upstream gas flow commences service.

<sup>3</sup> The Matagorda processing plants has been idle (mothballed) prior to Hurricane Gustav/Ike.

**Sources:** Confirmed by company or on company web site. Various trade press sources



# U.S. Department of Energy Emergency Support Function 12

## Electricity Updates:

### Texas:

As of: 9/23/2008 9:00 AM EDT



Electricity Outages: Utility Detail			
Texas			
Utility	Outages	Total Utility	% w/o Power
SWEPCO	293	84,696	0.3%
Entergy Texas	29,951	397,451	7.5%
CenterPoint	684,053	2,076,978	32.9%
ONCOR	415	179,442	0.2%
TX New Mexico Power Co	20,696	113,370	18.3%
All Cooperatives	9,833	462,645	2.1%
<b>TOTAL</b>	<b>745,241</b>	<b>3,314,582</b>	

Total utility customers are based on TXPUC outage reports.

Note: due to a large number of service providers, including investor owned utilities and cooperatives, the number of customer outages reported may not be comprehensive.

- As of 9:00 AM EDT September 23, there are 745,241 customers reported without power in Texas. Over 52,700 customers have had power restored since Ike Situation Report No. 15.

### Additional State Reports:

- As of 6:00 AM September 23, utilities in Louisiana are not reporting any outages. Entergy reports that power is restored to all customers who can receive power.
- In other States impacted by Ike, remaining outages as of 8:00 AM EDT September 23 include:
  - Ohio – 25,309 outages, less than 1 percent of total customers
  - Kentucky – 4,610 outages, less than 1 percent of total customers

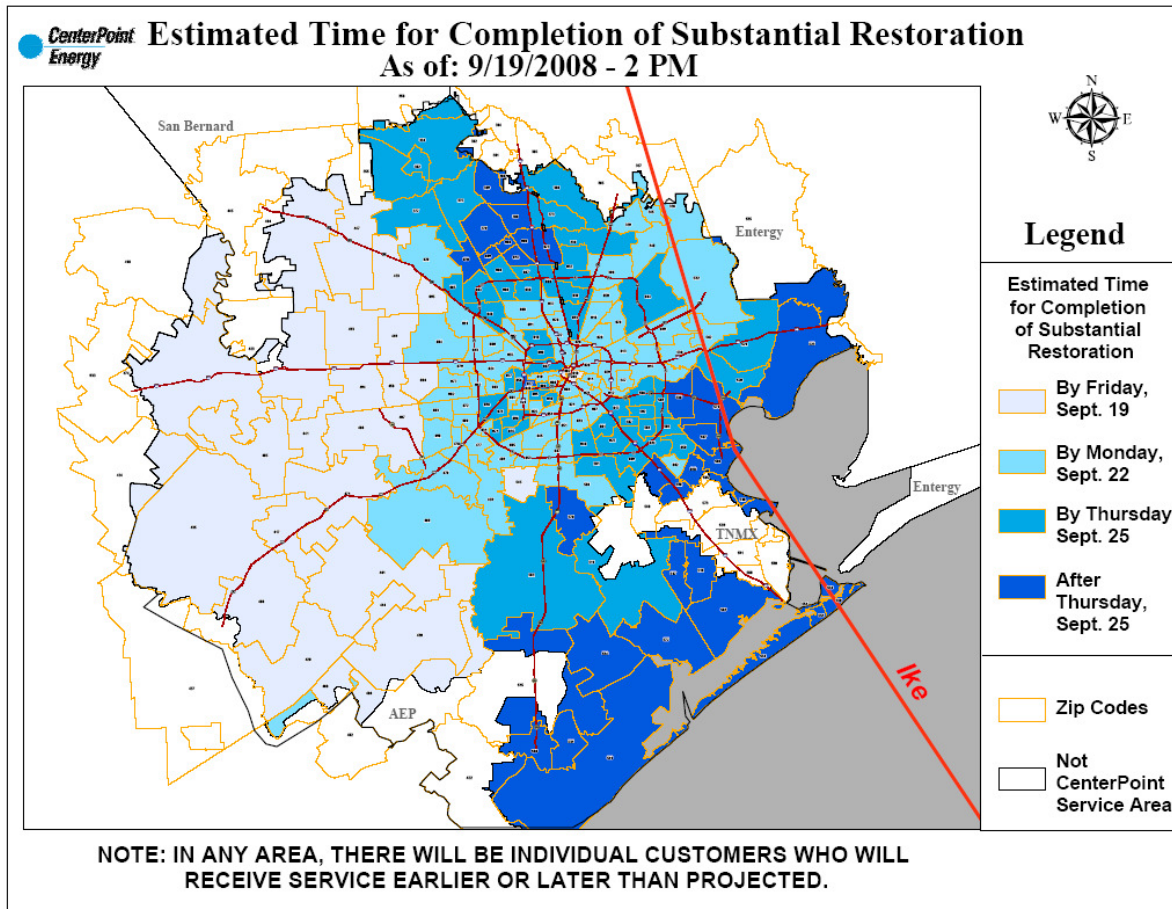
### Restoration Updates:

- As of 9:00 AM EDT September 23, CenterPoint has restored power to over 1.52 million customers of the 2.1 million that lost power due to Ike. See map below for CenterPoint restoration estimates as of September 19.
- CenterPoint reports that 8,000 mutual assistance crews plus 4,200 internal crews and contractors are involved in the restoration. Entergy has approximately 14,000 crews restoring service.





# U.S. Department of Energy Emergency Support Function 12



- Restoration updates from CenterPoint include:
  - 74 of 77 hospitals have been restored.
  - 920 circuits have been restored out of the original 1,379 that were out.
  - 459 distribution circuits, out of a total of 1,492, are out.
  - 93 transmission lines have been restored out of the original 94 that were out.
  - One substation on Galveston Island remains without transmission service as of September 22.
- As of 9:00 AM EDT September 23, CenterPoint equipment outages include:
  - Distribution circuits - 1
  - Transmission circuits - 1
- As of 6:00 AM EDT September 23, Entergy reports restoration progress to transmission and distribution lines affected by Ike:
  - 195 of 238 transmission lines restored
  - 332 of 338 substations restored
- In Texas, Entergy restoration estimates by area are:
  - September 24 – Cleveland, Conroe, Huntsville, Madisonville, Navasota, New Caney, The Woodlands, Woodville



## U.S. Department of Energy Emergency Support Function 12

- September 26 - Beaumont, Bevil Oaks, Sour Lake, Dayton, Ames, Daisetta, Batson, Saratoga, Orange, Vidor, Port Arthur, Port Neches, Nederland, Groves, Silsbee, Lumberton, Kountze, Winnie, Anahuac
- Damaged, destroyed or flooded – no date determined- Bolivar Peninsula, and other impacted communities. Energy reports as of September 23, that 8,200 customers are unable to receive power due to service locations that were damaged, destroyed or made inaccessible due to Ike.
- In Ohio, customer outages have dropped from over 1 million to 25,309 (less than one percent of customers) as of 9:00 AM September 23. The majority of outages are in the Dayton Power and Light (DP&L) service area where 1,500 crews from 10 states are restoring service. DP&L has the necessary materials such as transformers, poles, cross-arms and wire, to make the repairs and these materials are staged throughout the DP&L service area. Restoration to individual pockets of outages is expected by mid-week.