

**Table 1. 1998 U.S. Summary Statistics**

Item	Value	Highest	Lowest
Primary Generating Fuel	Coal	--	--
Population (as of 7/98)	270,248,003	CA	WY
Average Electricity Price (cents/kWh)	6.74	NH	ID
Industrial (cents/kWh)	4.48	NH	WA
Commercial (cents/kWh)	7.41	HI	ID
Residential (cents/kWh)	8.26	NH	WA
<b>INDUSTRY</b>			
Capability (MWe)	775,884	TX	DC
Generation (MWh)	3,617,873,059	TX	DC
Capability/person (KWe/person)	2.87	WY	RI
Generation/person (MWh/person)	13,387.23	WY	DC
Emissions (Thousand Short Tons)			
Sulfur Dioxide	12,433	OH	VT
Nitrogen Oxide	7,902	TX	VT
Carbon Dioxide	2,455,267	TX	VT
Sulfur Dioxide/sq. mile (Tons)	3.51	WV	ID
Nitrogen Oxides/sq. mile (Tons)	2.23	IN	VT
Carbon Dioxide/sq. mile (Tons)	694.07	DC	ID
<b>UTILITY</b>			
Capability (MW)	686,692	TX	RI
Generation (MWh)	3,212,170,791	TX	DC
<b>NONUTILITY</b>			
Capability (MW)	89,193	CA	NE
Share of Capability (Percent)	11.5	RI	SD
Generation (MWh)	405,702,268	CA	NE
Share of Generation (Percent)	11	RI	SD

**Table 2. Five Largest Plants, 1998**

Plant	Energy Source <sup>b</sup>	Operating Company	Net Capability (MW)	Age (Years)
1. Grand Coulee .....	Hydro	Bureau of Reclamation	7,079	57
2. Palo Verde .....	Nuclear	Arizona Public Service Co	3,733	12
3. W A Parish .....	Coal, Gas	Houston Lighting & Power Co	3,654	40
4. Scherer .....	Coal	Georgia Power Co	3,443	16
5. Bowen .....	Coal	Georgia Power Co	3,302	27

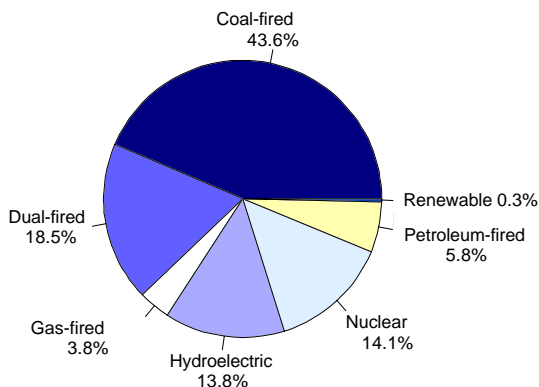
**Table 3. Top Five Utilities Ranked by Retail Sales Revenue Within the State, 1998**  
(Million Dollars)

Utility	All Sectors	Residential	Commercial	Industrial	Other
A. Southern California Edison Co .....	7,105	2,777	2,726	1,526	76
B. Pacific Gas and Electric Co .....	7,032	2,891	3,138	931	72
C. Commonwealth Edison Company ...	6,687	2,552	2,188	1,407	541
D. Texas Utilities Electric Co .....	6,135	2,854	1,861	982	439
E. Florida Power & Light Company .....	6,097	3,579	2,239	197	82
Total .....	33,057	14,653	12,151	5,042	1,210
Percentage of Utility Sales .....	15	16	17	11	18

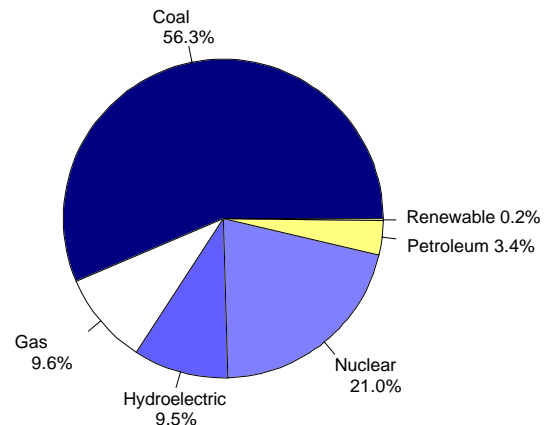
**Table 4. Electric Power Industry Generating Capability by Plant Type, 1988, 1993, and 1998**  
(Megawatts Electric)

Plant Type	1988	1993	1998	Annual Growth Rate 1988-1998 (Percent)	Percentage Share 1988	Percentage Share 1993	Percentage Share 1998
Total Utility .....	677,654	699,971	686,692	0.1	92.6	92.7	88.5
Coal-fired .....	294,685	300,795	299,739	0.2	40.3	39.8	38.6
Petroleum-fired .....	54,983	47,815	39,752	-3.2	7.5	6.3	5.1
Gas-fired .....	16,080	17,027	26,232	5.0	2.2	2.3	3.4
Dual-fired .....	124,802	137,172	127,183	0.2	17.1	18.2	16.4
Nuclear .....	94,695	99,041	97,070	0.2	12.9	13.1	12.5
Hydroelectric .....	90,284	95,910	94,424	0.4	12.3	12.7	12.2
Renewable .....	2,124	2,211	2,293	0.8	0.3	0.3	0.3
Total Nonutility .....	54,067	54,984	89,193	5.1	7.4	7.3	11.5
Industry .....	731,721	754,955	775,885	0.6	100.0	100.0	100.0

**Figure 1. Utility Generating Capability by Primary Energy Source, 1998**



**Figure 2. Utility Generation by Primary Energy Source, 1998**



**Table 5. Electric Power Industry Generation of Electricity by Primary Energy Source, 1988, 1993, and 1998**  
(Megawatthours)

Fuel	1988	1993	1998	Annual Growth Rate 1988-1998 (Percent)	Percentage Share 1988	Percentage Share 1993	Percentage Share 1998
Total Utility . . . . .	2,704,250,058	2,882,524,766	3,212,170,791	1.7	90.5	90.2	88.8
Coal . . . . .	1,540,652,774	1,639,151,186	1,807,479,829	1.6	51.6	51.3	50.0
Petroleum . . . . .	148,899,561	99,538,857	110,157,895	-3.0	5.0	3.1	3.0
Gas . . . . .	252,800,704	258,915,301	309,222,404	2.0	8.5	8.1	8.5
Nuclear . . . . .	526,973,047	610,291,214	673,702,104	2.5	17.6	19.1	18.6
Hydroelectric	222,939,683	265,062,757	304,402,562	3.2	7.5	8.3	8.4
Renewable . . . . .	11,984,288	9,565,451	7,205,997	-5.0	0.4	0.3	0.2
Total Nonutility . . . . .	283,944,270	314,399,053	405,702,268	3.6	9.5	9.8	11.2
Industry . . . . .	2,988,194,328	3,196,923,819	3,617,873,059	1.9	100.0	100.0	100.0

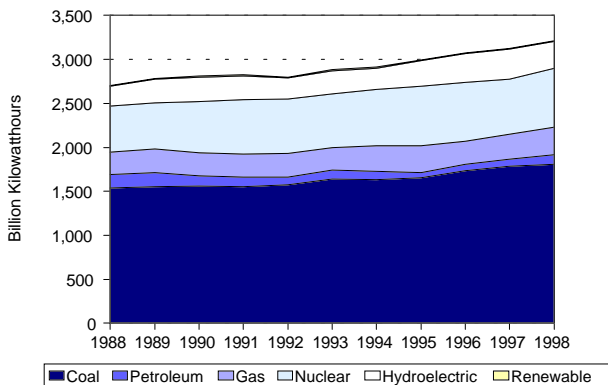
**Table 6. Utility Delivered Fuel Prices for Coal, Petroleum, and Gas, 1988, 1993, and 1998**  
(Cents per Million Btu, 1998 Dollars)

Fuel	1988	1993	1998	Annual Growth Rate 1988-1998 (Percent)
Coal . . . . .	146.6	138.5	125.2	-1.6
Petroleum . . . . .	243.9	243.3	213.6	-1.3
Gas . . . . .	226.3	256.0	238.1	0.5

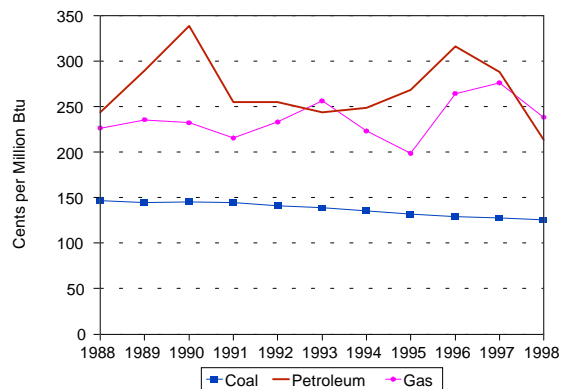
**Table 7. Electric Power Industry Emissions Estimates, 1988, 1993, and 1998**  
(Thousand Short Tons)

Emission Type	1988	1993	1998	Annual Growth Rate 1988-1998 (Percent)
Sulfur Dioxide . . . . .	15,713	14,986	12,433	-2.3
Nitrogen Oxides <sup>c</sup> . . . . .	7,170	7,052	7,902	0.9
Carbon Dioxide <sup>c</sup> . . . . .	1,908,681	1,988,724	2,455,267	2.4

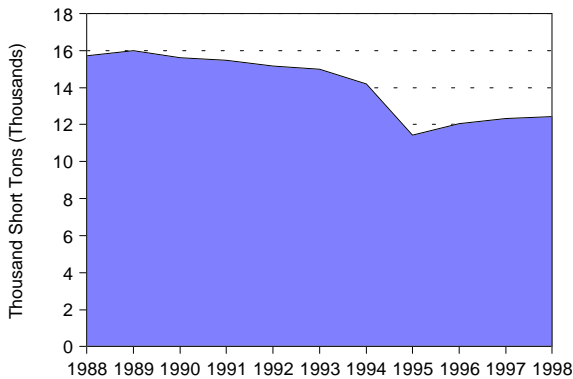
**Figure 3. Utility Generation of Electricity by Primary Energy Source, 1988-1998**



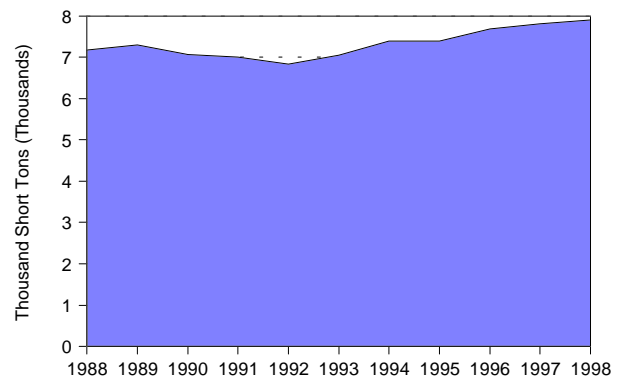
**Figure 4. Utility Delivered Fuel Prices for Coal, Petroleum, and Gas, 1988-1998 (1998 Dollars)**



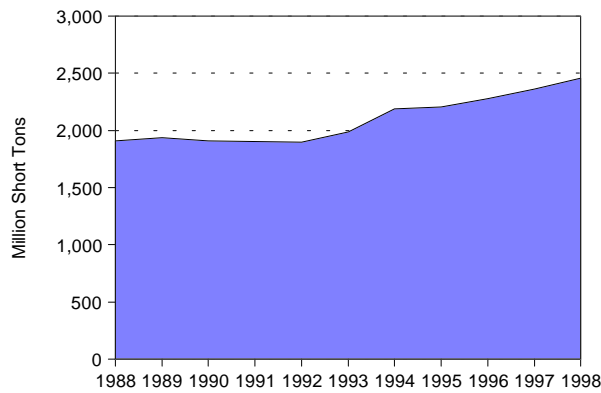
**Figure 5. Estimated Sulfur Dioxide Emissions, 1988-1998**



**Figure 6. Estimated Nitrogen Oxide Emissions, 1988-1998**



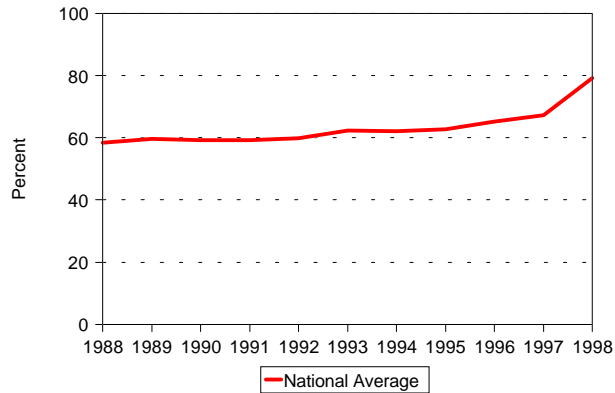
**Figure 7. Estimated Carbon Dioxide Emissions, 1988-1998**



**Table 8. Utility Retail Sales by Sector, 1988, 1993, and 1998**  
(Megawatthours)

Sector	1988	1993	1998	Annual Growth Rate 1988-1998 (Percent)	Percentage Share 1988	Percentage Share 1993	Percentage Share 1998
Residential . . . . .	892,866,149	994,780,818	1,127,734,988	2.4	34.6	34.8	34.8
Commercial . . . . .	699,100,173	794,573,370	968,528,009	3.3	27.1	27.8	29.9
Industrial . . . . .	896,498,130	977,164,250	1,040,037,873	1.5	34.8	34.1	32.1
Other . . . . .	89,598,080	94,943,902	103,517,589	1.4	3.5	3.3	3.2
Total . . . . .	2,578,062,481	2,861,462,340	3,239,818,459	2.3	100.0	100.0	100.0

**Figure 8. Nuclear Power Capacity Factor  
1988-1998**



**Table 9. Utility Retail Sales Statistics, 1988, 1993, and 1998**

Item	Investor-Owned	Public	Federal	Cooperative	Total
	1988				
Number of Utilities	229	1,931	5	901	3,066
Number of Retail Customers	81,144,502	14,697,040	517	10,985,414	106,827,473
Retail Sales (MWh)	1,979,137,007	364,525,876	51,092,718	183,306,880	2,578,062,481
Percentage of Retail Sales	76.8	14.1	2.0	7.1	100.0
Revenue from Retail Sales (million 1998 dollars) <sup>d</sup>	162,668	26,238	2,483	15,868	207,257
Percentage of Revenue	78.5	12.7	1.2	7.7	100.0
	1993				
Number of Utilities	216	1,950	6	883	3,055
Number of Retail Customers	86,843,054	15,641,717	28,411	12,221,795	114,734,977
Retail Sales (MWh)	2,186,888,993	406,997,935	46,369,888	221,205,524	2,861,462,340
Percentage of Retail Sales	76.4	14.2	1.6	7.7	100.0
Revenue from Retail Sales (million 1998 dollars) <sup>d</sup>	172,487	27,285	1,412	17,056	218,240
Percentage of Revenue	79.0	12.5	0.6	7.8	100.0
	1998				
Number of Utilities	205	1,951	7	852	3,015
Number of Retail Customers	91,889,360	18,002,349	33,544	14,115,259	124,040,512
Retail Sales (MWh)	2,427,733,133	485,692,301	46,631,180	279,761,845	3,239,818,459
Percentage of Retail Sales	74.9	15.0	1.4	8.6	100.0
Revenue from Retail Sales (million 1998 dollars) <sup>d</sup>	168,502	30,107	1,109	18,628	218,346
Percentage of Revenue	77.2	13.8	0.5	8.5	100.0