

Paying Dividends on Investments in Rural America

Socio-Economic Benefits Assessment System (SEBAS)

Dr. Thomas Johnson, Program Director, Rural Policy Research
Institute, University of Missouri

William F. Hagy III, Acting Deputy Under Secretary for Rural
Development

February 27, 2009



PURPOSE OF SEBAS -

THE SOCIO-ECONOMIC BENEFIT ASSESSMENT SYSTEM

- Assess the effectiveness of Rural Development's programs in measures of local and regional economic performance, for example, Gross Domestic Product. SEBAS incorporates the indirect effects of Rural Development programs. Provides an estimate of the economic impact of the loan.

RD PROGRAMS IN SEBAS

- Business & Industry Guaranteed Loans
- IRP – Intermediary Relending Program
- REAP – Rural Energy for America Program
Guaranteed Loans

SEBAS IS

1. An **economic model** for measuring these economic indicators
2. A system of consistent economic **indicators**
3. A large nation-wide regional economic **information system**
4. A **process** for data collection and data entry

SEBAS FEATURES

SEBAS consists of one model for each county in the US

Each county model has

- 54 producing sectors
- 9 household income-size classes
- 10 occupational groups
- 9 federal & 16 state/local tax revenue categories

PRIMARY SEBAS INDICATORS

1. Direct jobs (Provided by SEBAS user)
2. Adjusted Net Jobs
3. Direct full-time equivalent (FTE) employment
4. Total full-time equivalent employment
5. Total Gross Domestic product (GDP)
6. GDP/FTE
7. Tax Revenues

WHY DISPLACEMENT EFFECTS?

- In the long run, all “new activity” replaces “old activity” somewhere.
- SEBAS predicts the intraregional displacement effects of projects
- Estimated displacement based on regional sectoral structure
 - For example, retail verses manufacturing

SEBAS INFORMATION SYSTEM

- Uses input-output data
- Detailed interregional flow data
- Sectoral occupational demand data
- Interfaced with USDA RD's GLS project database
- Project cost data estimated allowing cost-effectiveness analysis

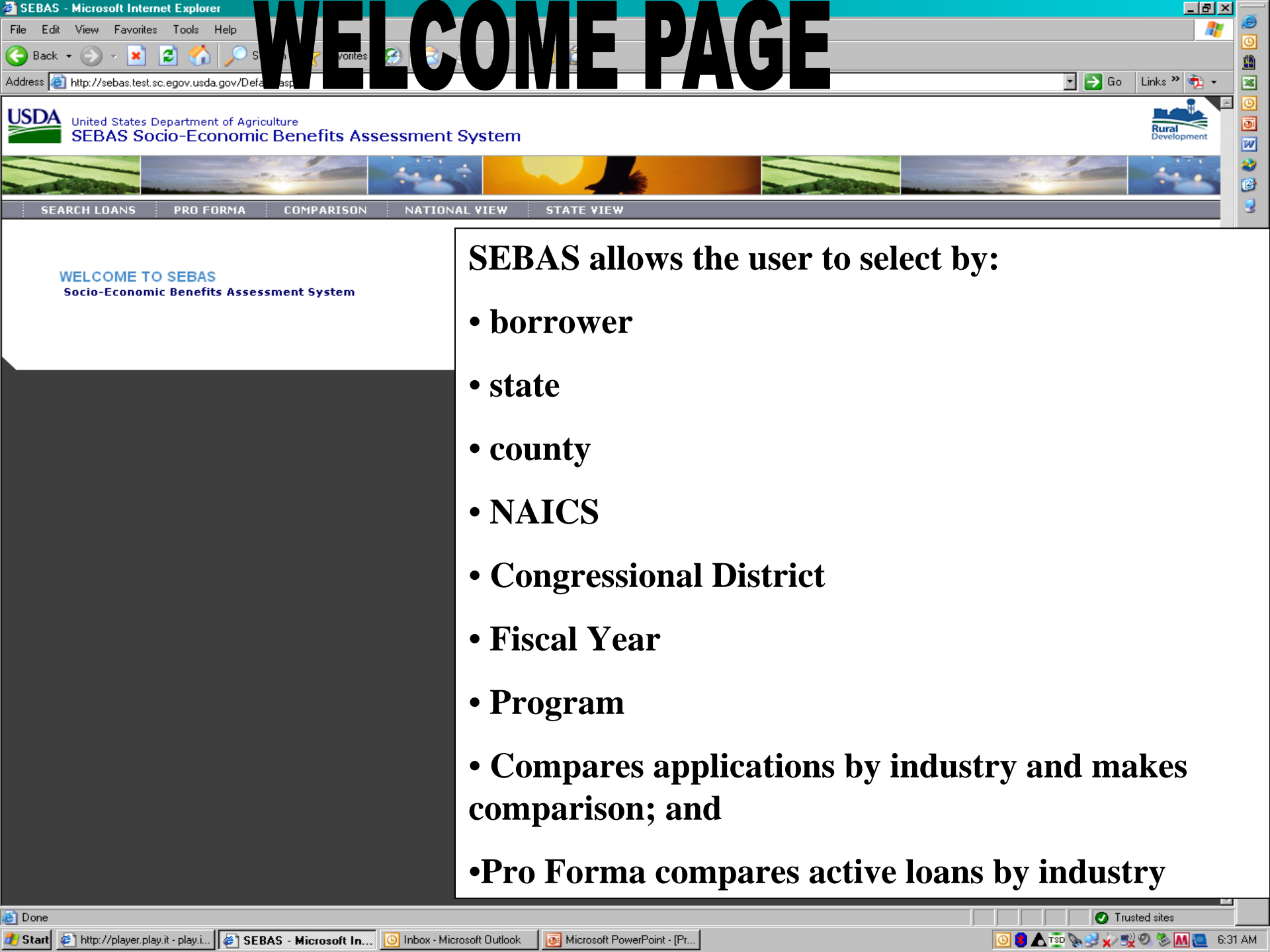
SEBAS PROCESS

- Web-based interface for USDA RD
- Overnight updates give national and state offices next day access to projected impacts of projects
- User's may do "what if" analyses
- Actual direct effects confirmed annually and updated

FUTURE PROCESS

- We are working to extend SEBAS include a variety of sustainability indicators

WELCOME PAGE



SEBAS RESULTS

SEBAS - Tabular Results for Non-IRP Programs - Microsoft Internet Explorer

File Edit View Favorites Tools Help

Back Forward Stop Refresh Home Search Favorites

Address <https://sebas.sc.egov.usda.gov/TabularResults.aspx>

Go Links McAfee SiteAdvisor

SEBAS Socio-Economic Benefits Assessment System

Rural Development



SEARCH LOANS PRO FORMA COMPARISON NATIONAL VIEW STATE VIEW

SEBAS RESULTS

Projected Benefits

Graphs

Expand All | Print | Export

Program : B&I and RE/EE-9006 Combined List Type of Assistance : All Obligation Dates :
 Fiscal Year : All Request Type : All

Borrower/Recipient	Program	Direct Jobs	SEBAS Result						Subsidy Cost	Amount
			Adj Net Jobs	Direct FTE Emp	Total FTE Emp	Total GDP (000)	Total GDP / FTE (000)	Tax Rev. (000)		
▼ Iowa										
▼ Lee	9006	12	10	9	40	\$2,410	\$61	\$156	\$129,000	\$2,000,000
▼ Washington	9006	10	10	10	61	\$4,582	\$76	\$350	\$209,625	\$3,250,000
Total		22	20	18	101	\$6,992	\$70	\$505	\$338,625	\$5,250,000

Error on page.

Trusted sites

Start | Inbox - Microsoft Outlook | S:\RBS\BPFiles\SLD\vb... | RD Pres_5_24_05.ppt | SEBAS - Tabular Re...

Taskbar icons and system clock: 2:36 PM

RESULTS IN GRAPHIC FORMAT

SEBAS - Graph Results for Non-IRP Programs - Microsoft Internet Explorer

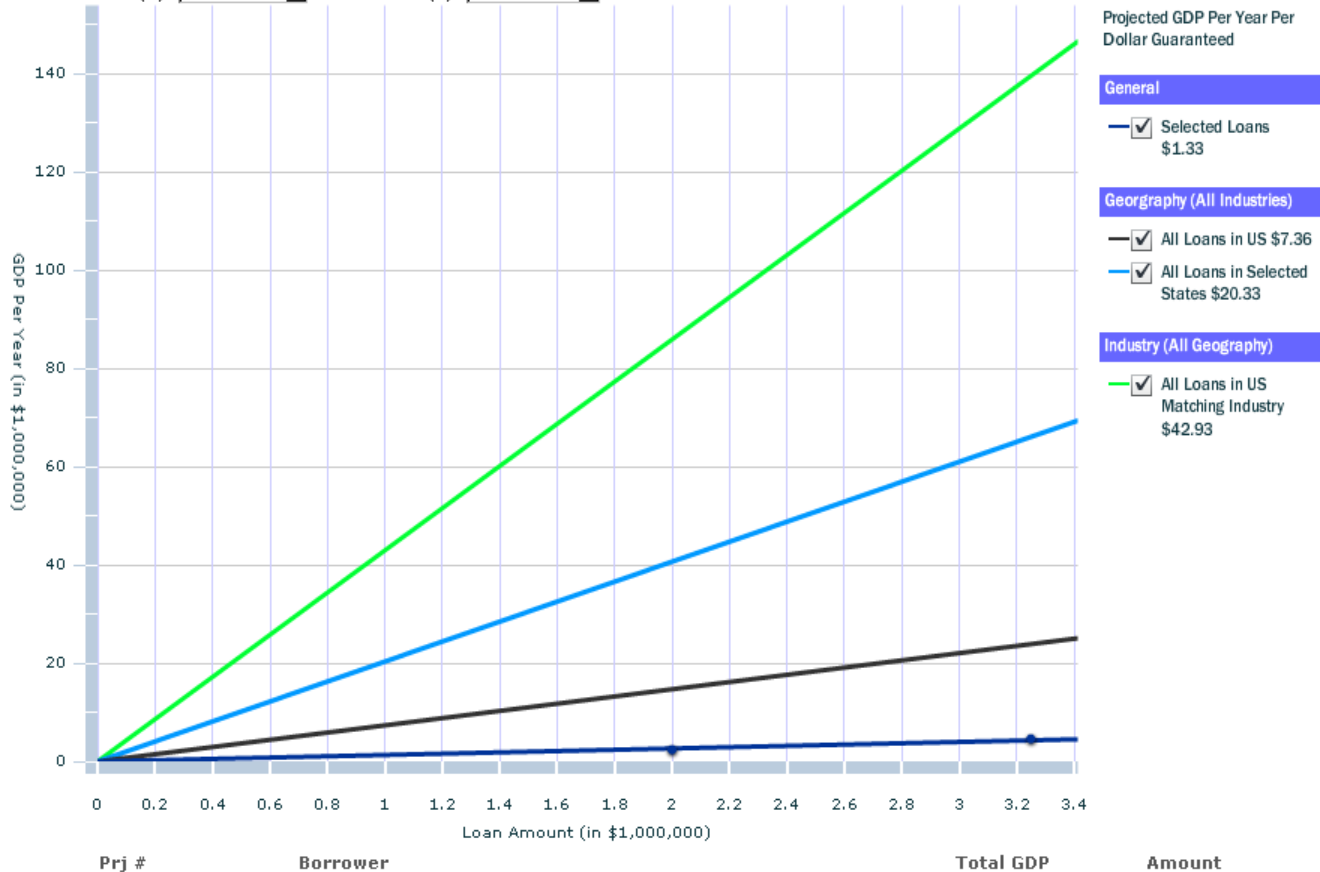
File Edit View Favorites Tools Help

Search Criteria

Program: B&I and RE/EE-9006 Combined List
Type of Assistance: All
Obligation Dates: Fiscal Year: All Request Type: All

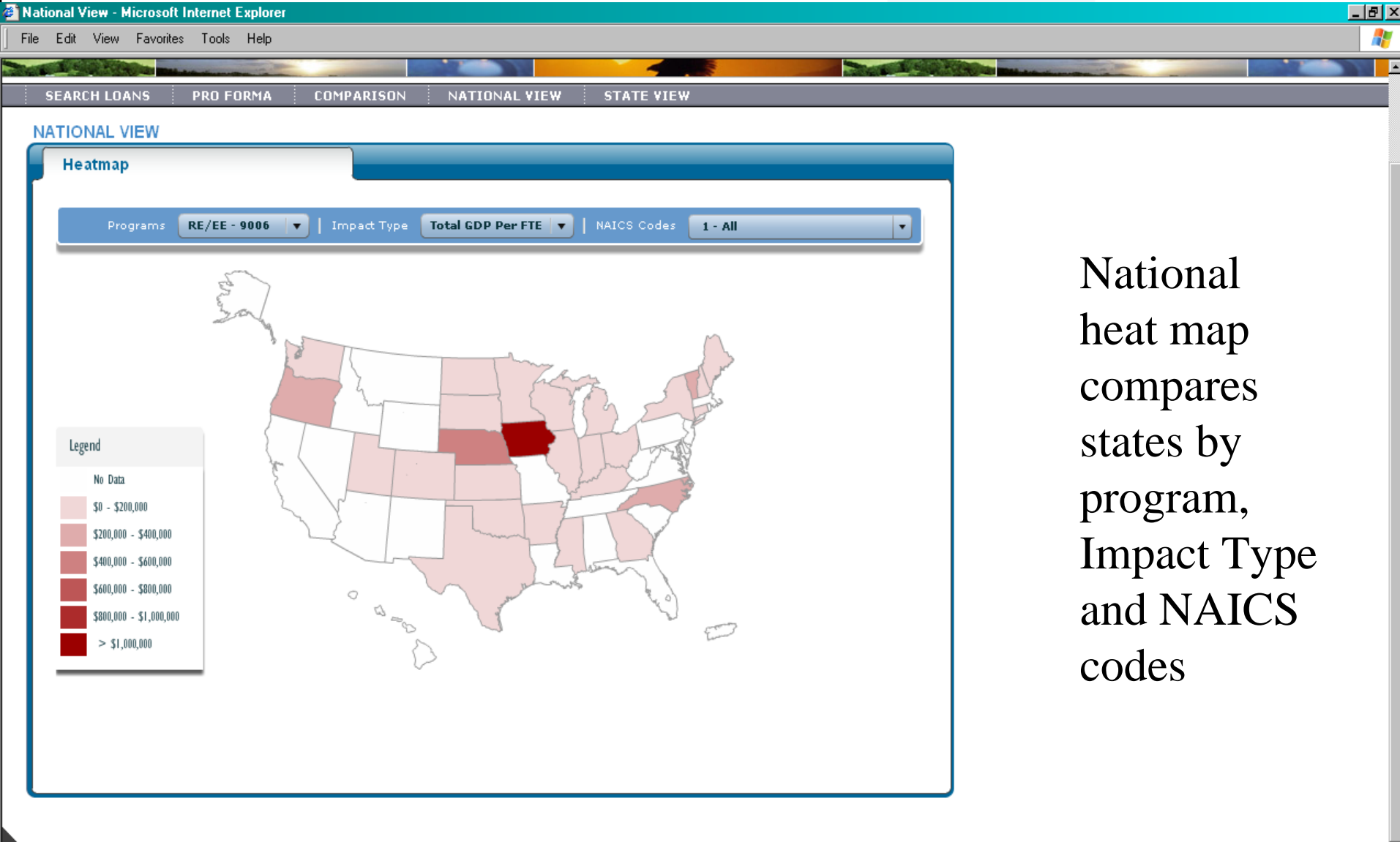
Loan Amount/Subsidy Cost vs. Net New Annual GDP due to Projects

Horizontal Axis (X): Loan Amount Vertical Axis (Y): GDP Per Year



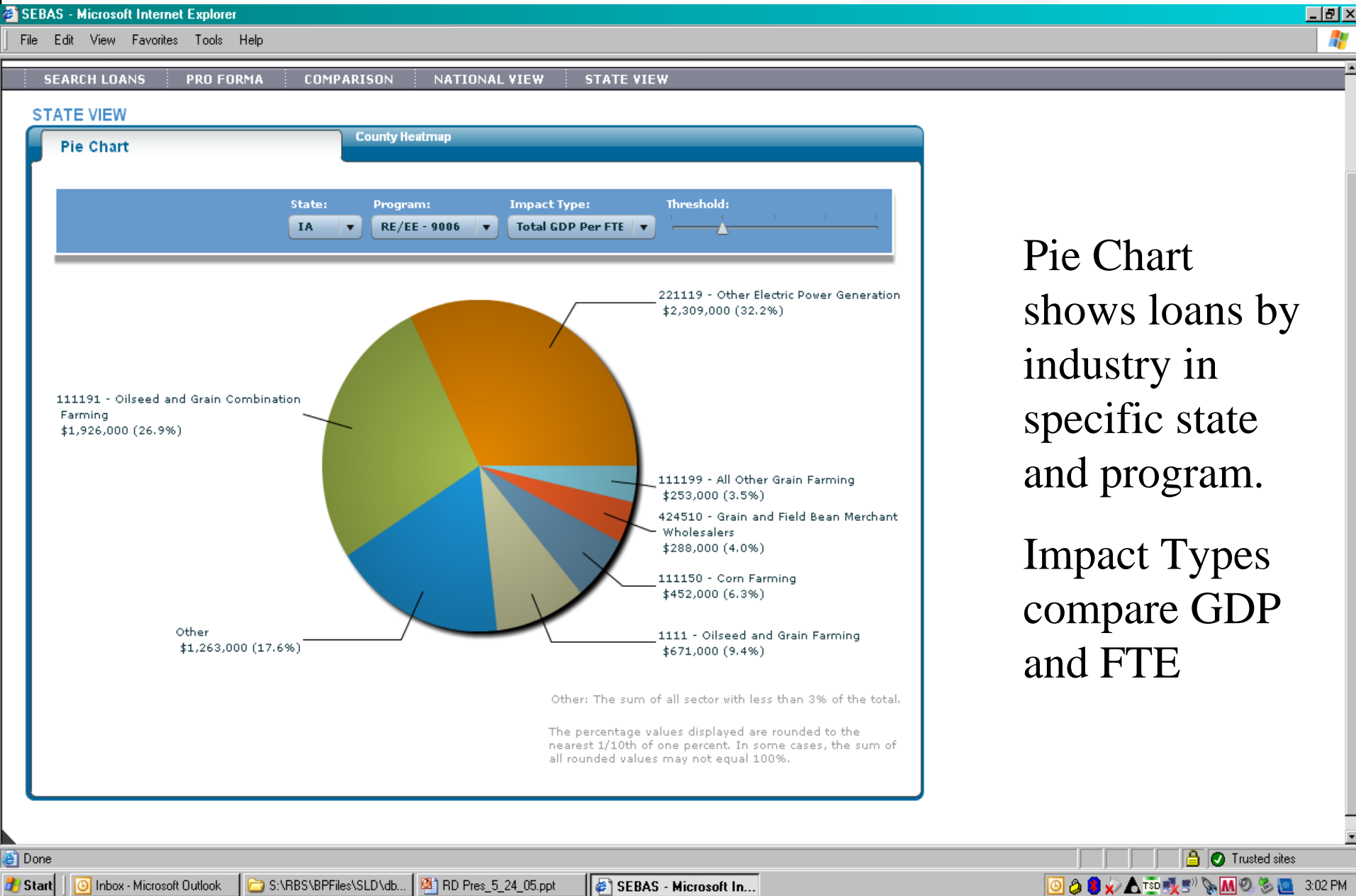
- Graphs compares loan results with National results
- Compares Industry selected

HEAT MAP



National heat map compares states by program, Impact Type and NAICS codes

PIE CHART



Pie Chart shows loans by industry in specific state and program.

Impact Types compare GDP and FTE

COUNTY HEAT MAP

SEBAS - Microsoft Internet Explorer

File Edit View Favorites Tools Help

SEARCH LOANS

PRO FORMA

COMPARISON

NATIONAL VIEW

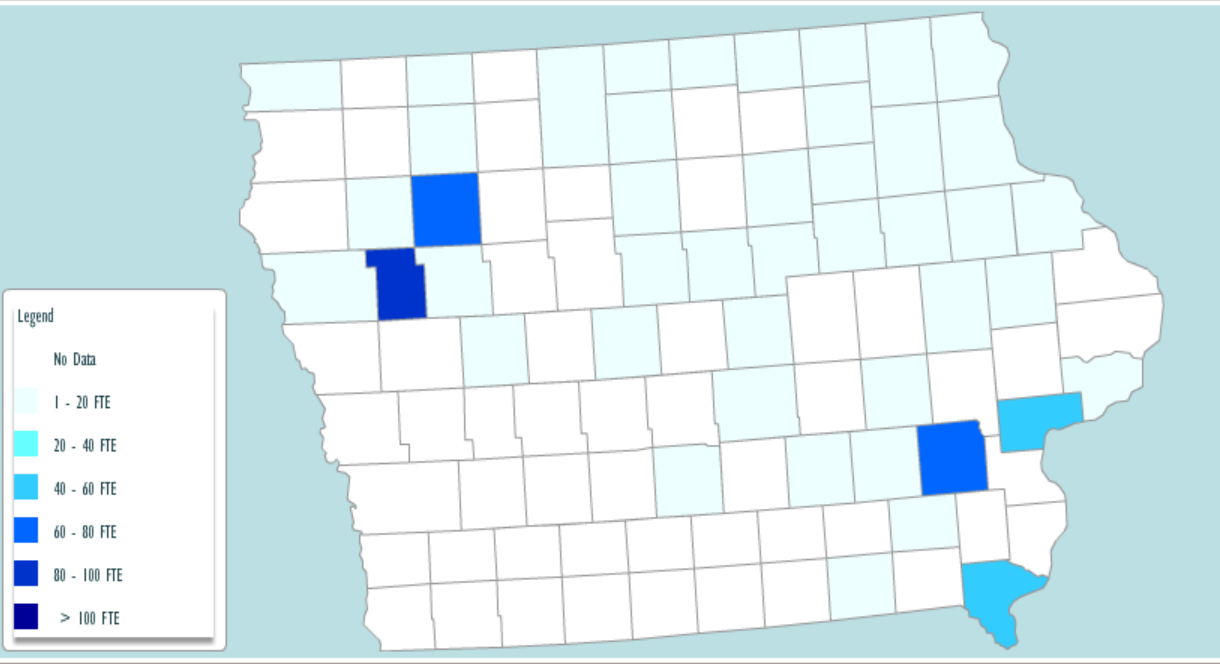
STATE VIEW

STATE VIEW

Pie Chart

County Heatmap

State: IA Program: RE/EE - 9006 Impact Type: Total FTE Employer NAICS: All



- Heat map can be used to compare Direct and Total FTE; Total GDP; Total GDP Per FTE and Tax Revenue

- Used for outreach and marketing

Done

Start

Inbox - Microsoft Outlook

S:\RBS\BPFiles\SLD\vb...

RD Pres_5_24_05.ppt

SEBAS - Microsoft In...

Trusted sites

3:06 PM

PRO FORMA

Pro Forma - Microsoft Internet Explorer

File Edit View Favorites Tools Help

Back Forward Stop Refresh Home Search Favorites

Address <http://sebas.test.sc.egov.usda.gov/Projections.aspx> Go Links

USDA United States Department of Agriculture
SEBAS Socio-Economic Benefits Assessment System

Rural Development

SEARCH LOANS PRO FORMA COMPARISON NATIONAL VIEW STATE VIEW

PRO FORMA

No projections currently saved.

Print | Export

Add New Delete All Calculate All

- Used to Calculate projected GDP for new applications
- Assists State to determine Economic Impacts of each proposed loan

Done

Start <http://player.play.it - play.i...> Pro Forma - Microsof... Inbox - Microsoft Outlook Microsoft PowerPoint - [Pr...

Trusted sites

6:43 AM

COMPARISON OF LOANS

Comparison - Microsoft Internet Explorer

File Edit View Favorites Tools Help

Back Forward Stop Refresh Home Search Favorites

Address <http://sebas.test.sc.egov.usda.gov/Comparison.aspx> Go Links

USDA United States Department of Agriculture
SEBAS Socio-Economic Benefits Assessment System

Rural Development

SEARCH LOANS PRO FORMA COMPARISON NATIONAL VIEW STATE VIEW

COMPARISON

Print | Export

Add New Delete All

Start <http://player.play.it - play.i...> Comparison - Micros... Inbox - Microsoft Outlook Microsoft PowerPoint - [Pr...]

6:53 AM

SEBAS allows the user to compare different loans to determine best economic benefits

CONGRESSIONAL DISTRICT SEARCH

SEBAS - Search by Congressional District - Microsoft Internet Explorer

File Edit View Favorites Tools Help

Address <http://sebas.test.sc.egov.usda.gov/CDSearch.aspx>

USDA United States Department of Agriculture
SEBAS Socio-Economic Benefits Assessment System

Rural Development

SEARCH LOANS PRO FORMA COMPARISON NATIONAL VIEW STATE VIEW

LOAN SEARCH

Borrower County - Advanced Congressional District - Advanced

Placing the mouse over an underlined label/title will provide a description for that particular object.

Type of Assistance:

Agency	Program	Type of Assistance
RBS	B&I	<ALL>
	IRP	Armament Retooling & Manufacture Support Guarante...
	RE/EE - 9006	B&I Disaster Assistance For Rural Business Enterpr...
	B&I and RE/EE-9006 Combined List	B&I Drought And Disaster
	B&I and RE/EE-9006 Co-Funded	Business & Industry Guaranteed Loan - 1%

Congressional Districts:

States	Congressional Districts
Utah	<All>
Vermont	Wisconsin
Virginia	[WV] - 1st
Washington	[WV] - 2nd
West Virginia	[WV] - 3rd
Wisconsin	[WV] - 4th

Obligation Date: to

Faith Based: <ALL>

Valid Energy Type:

Valid Energy Type	Biomass:
<ALL>	<ALL>
Anaerobic Digester	Agricultural Crops
Biomass, Bioenergy	Animal / Other Waste Materials
Efficiency, Buildings	Fats, Oils, and Greases
Efficiency, Industrial	Fibers

Search

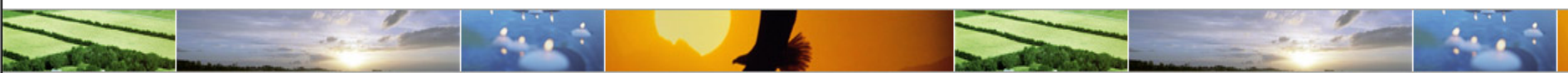
Allows user to select specific congressional district to show economic benefits of all loans made in that specific district

Done

Start <http://player.play.it - play.i...> SEBAS - Search by ... Inbox - Microsoft Outlook Microsoft PowerPoint - [Pr...]

Trusted sites

7:01 AM



SEBAS RESULTS

Projected Benefits

Graphs

[Expand All](#) | [Print](#) | [Export](#)

Program : B&I and RE/EE-9006 Co-Funded

Type of Assistance : All

Obligation Dates :

Fiscal Year : All

Request Type : All

Borrower/Recipient	Program	Direct Jobs	SEBAS Result						Subsidy Cost	Amount
			Adj Net Jobs	Direct FTE Emp	Total FTE Emp	Total GDP (000)	Total GDP / FTE (000)	Tax Rev. (000)		
▼ Iowa		396	385	332	524	\$30,933	\$60	\$1,758	\$1,435,895	\$16,767,763
▼ Dickinson		371	368	316	422	\$25,594	\$61	\$1,154	\$129,051	\$3,077,948
	B&I	6	6	6	7	\$414	\$61	\$19	\$7,332	\$80,000
	B&I	356	353	303	405	\$24,559	\$61	\$1,108	\$114,387	\$2,957,948
	9006	9	9	8	11	\$621	\$61	\$28	\$7,332	\$40,000
▼ Ida		17	17	16	102	\$5,340	\$53	\$605	\$1,298,000	\$13,500,000
	B&I	3	3	3	18	\$943	\$53	\$107	\$649,000	\$3,500,000
	9006	14	14	14	84	\$4,398	\$53	\$498	\$649,000	\$10,000,000
▼ Lyon		8	1	1	1	\$1	\$12	\$1	\$8,844	\$189,815
	9006	4	1	1	1	\$1	\$12	\$1	\$1,162	\$11,995
	B&I	4	1	1	1	\$1	\$12	\$1	\$7,682	\$177,820

QUESTIONS







Professional Performance for the Home



Professional Performance









Professional Performance for the Home



**Viking
Founder**

Fred E. Carl, Jr.

Professional Performance for the Home

for the Home

**Inspired
by
Chambers
Range**

Professional Performance

erfor

rofessional Performance



Professional Performance for the Home

for the Home

Perf



®

VIKING RANGE CORPORATION

Professional Performance



Professional Performance

Professional Performance for the Home

**Received AGA approval in 1986
and began full production in 1987**



What is Viking Range Corporation?



Professional Performance for the Home



Professional Performance for the Home



P
P

Professional Performance

Professional Performance for the Home











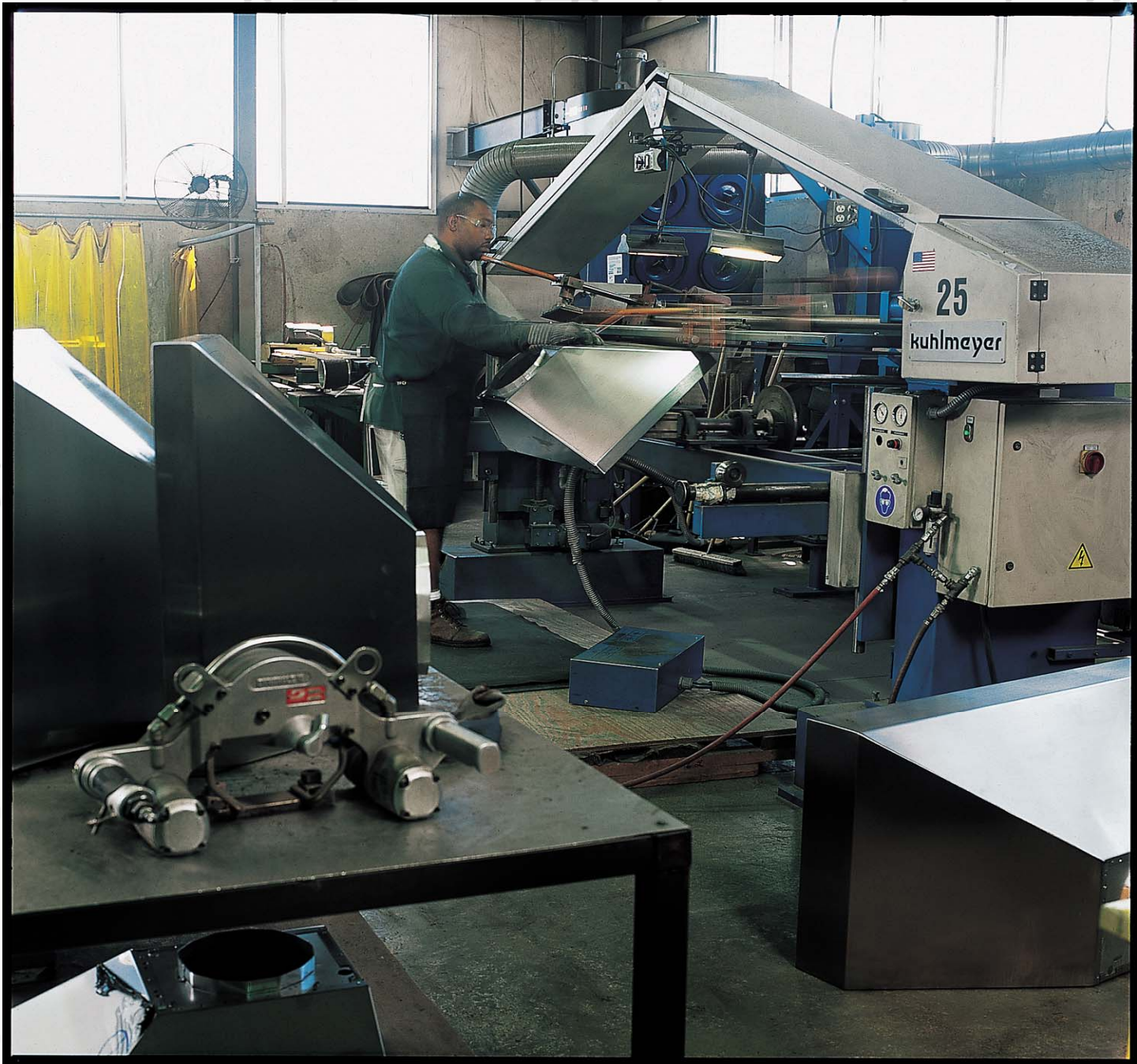




VIKING

PRODUCT SUPPORT CENTER







ome

for t

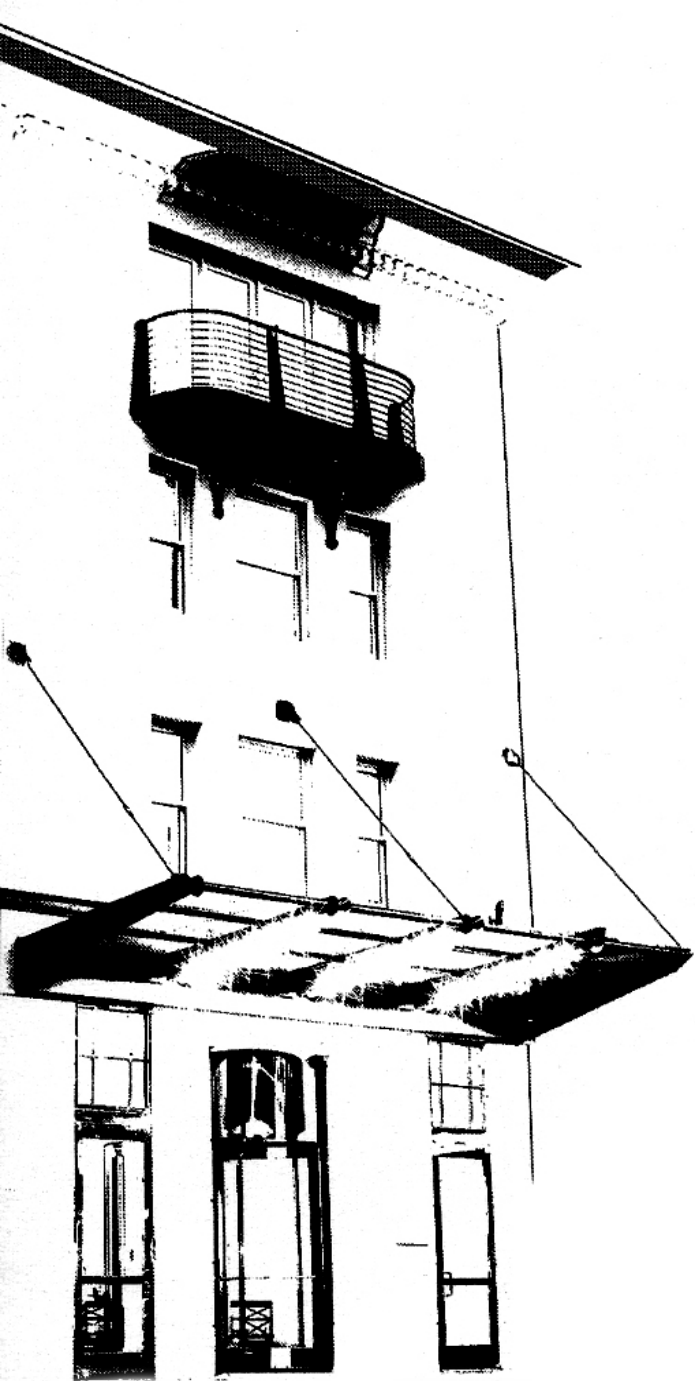
Perfo

e

rofe

e

nce



Professional Performance for the Home

re

for the Home

Professional Performance for the Home

Performance

Professional Performance

Viking Hospitality Group

Professional Performance for the Home

for THE ALLUVIAN



Performance for t THE ALLUVIAN SPA



COOKING SCHOOL

GIARDINA'S

(EST. 1936)

Professional Performance for the Home

for the Home

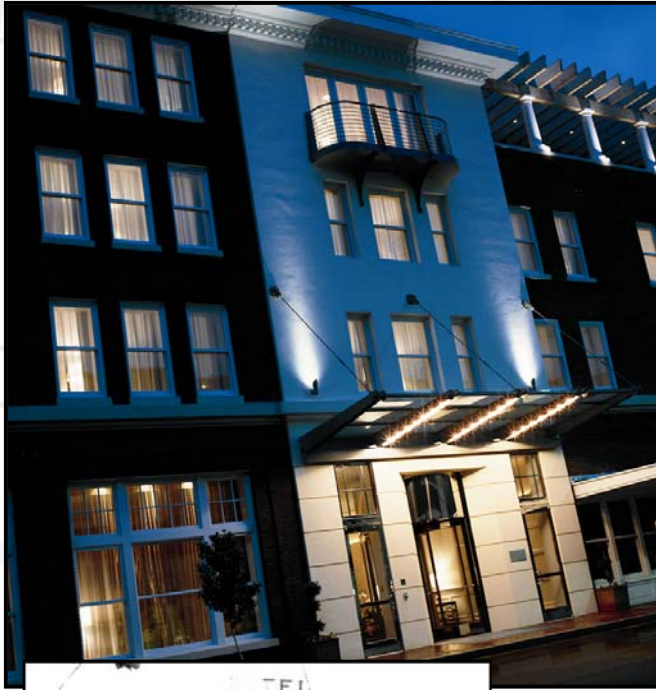
Perf THE ALLUVIAN



erformance

Professional Performance

Professional Performance for the Home



Performance for the Home



Professional Performance for the Home
Giardina's



Professional Performance for the Home



Professional Performance

for the Home

THE ALLUVIAN SPA



Professional Performance

The Viking Cooking School



Professional Performance for the Home

for the Home

Perf



®

VIKING RANGE CORPORATION

Professional Performance







2007 VIKING CLASSIC

ANNANDALE
GOLF CLUB



BankPlus

MISSISSIPPI

CN



SEPTEMBER 24 - 30, 2007 MADISON, MISSISSIPPI 866.898.GOLF

Professional Performance for the Home



Professional Performance for the Home
VIKING RANGE CORPORATION

www.vikingrange.com