

Land Grant Technical Report No. 38

# List of Plant Diseases in American Samoa 2002



Fred Brooks, Plant Pathologist

Land Grant Technical Report No. 44, American Samoa Community College Land Grant Program, Aug. 2002. This work was funded in part by Hatch grants SAM-015 and -020, United States Department of Agriculture, Cooperative State Research, Extension, and Education Service (CSREES) and administered by American Samoa Community College. The author bears full responsibility for its content.

The author wishes to acknowledge O.C. Steele for his assistance in plant identifications, the Land Grant Forestry crew for their work on the brown root rot survey, and M.A. Schmaedick for his continued support.

For more information on this publication, please contact:

Fred Brooks, Plant Pathologist  
American Samoa Community College  
Land Grant Program  
Pago Pago, AS 96799  
Tel. (684) 699-1394-1575  
Fax (684) 699-5011  
e-mail <fredbrooks@hotmail.com>

Title page: cordana leaf spot of banana caused by *Cordana musae*.

## TABLE OF CONTENTS

	Page
Introduction .....	iv
About this text .....	vi
Host-pathogen index .....	1
Pathogen-host index .....	15
Fungus pathogens on insects .....	27
English and Samoan plant names, botanical equivalents .....	28
List of host plants by family .....	30
Partial list of pathogens recorded in American Samoa .....	31
Authors of plant and fungus names .....	34
Bibliography .....	36

Color plates (following page 14)

## INTRODUCTION

The Pacific islands of American Samoa are an unincorporated territory of the United States located between latitude 14°12' and 14°23' South and longitude 170°32' and 170°52' West. The five principal islands—Tutuila, Aunu'u, and the Manu'a Islands of Ofu, Olosega and Ta'u—have a land area of 197 km<sup>2</sup>. They are volcanic, with narrow coastlines rising abruptly to tapered ridges. The ridges are comprised of primary and secondary forest, with 70% of the slopes greater than 30% (Wingert 1981). The highest elevations vary from 89 m on the small island of Aunu'u to 974 m on Ta'u; Matafao, 653 m, is the highest point on the main island of Tutuila.

Traditional subsistence farming is still concentrated along the coastal strips and lower slopes. Population pressure on the 140 km<sup>2</sup> island of Tutuila, however, is forcing development of slopes to 60%; approximately 90% of the more than 60,000 people in the Territory live on this island. Relatively level areas of importance are limited to the Tafuna (Leone) Plain on Tutuila and a few upland areas on the outer island of Ta'u. The wettest season is November-March, the driest season June-September. Yearly rainfall averages from 3,200 mm on the Tafuna Plain (airport) to 7,620 mm on Mt. Lata, Ta'u. The average temperature at Tafuna airport is about 28°C with an average high of 31°C and an average low of 25°C (Department of Commerce 1996).

Few plant disease epidemics have been recorded in American Samoa. This is partly due to traditional agroforestry practices. These practices include interplanting small areas of subsistence crops—taro, giant taro, tapioca, kava—among banana, breadfruit, coconut or forest trees. One recent exception was the 1993-1994 taro leaf blight epidemic caused by *Phytophthora colocasiae*. Taro (*Colocasia esculenta*) was a major crop in both American Samoa and (Western) Samoa, planted over large areas of the islands. When *P. colocasiae* arrived it rapidly spread through the susceptible Samoan cultivars. Recent establishment of leaf blight resistant taro from Micronesia has revived local production. Banana Bunchy Top Virus, devastating in many parts of the Pacific, was introduced to American Samoa in the late 1950s (Magee 1967). A recent survey showed an average of less than 5% of banana mats on Tutuila Island were infected and no sign of the disease in the Manu'a Islands (Brooks 1999). The percentage of disease in some of the commercial plantations, however was over 10%. The main limitations to banana production continue to be black leaf streak disease (*Mycosphaerella fijiensis*) and fruit damage by banana scab moth larvae (*Nacoleia octasema*). The role of nematodes is being assessed.

Previous plant disease lists for American Samoa have been based on short, infrequent visits by consultants, including Dumbleton (1954) and Firman (1975). McKenzie's work (1996) summarized these findings and others and, along with identifications from his 1989 survey, is the most complete record available. A technical paper on plant parasitic nematodes by Grandison was also published by the Secretariat of the Pacific Community (SPC) in 1996.

The following plant disease indexes present plant pathogenic organisms collected and identified in American Samoa between October 1998 and July 2002. Another section lists fungal pathogens isolated from insects. The high ratio of fungi to other parasitic organisms in these lists reflects their abundance and diversity in the warm, humid environment of the tropics. Fungi, as opposed to most bacteria and viruses, are also more amenable to identification in a small plant pathology laboratory with limited resources. Due to the large number of specimens

collected during this project and the time and cost of having them identified at a reputable off-island facility, some of the identifications are tentative. A voucher collection, including herbarium sheets, microscope slides, photomicrographs and photographs, has been established at the Tauiiili Pamerika Center for Tropical Agricultural Research, the USDA Land Grant Division of American Samoa Community College (ASLG).

Fred Brooks  
August 2002

## ABOUT THIS TEXT

Plant disease nomenclature, authorities, and modified host and pathogen index formats follow Farr et al. (1989). Plant names and authorities follow Farr (1989), Whistler (1994a), The Plant Names Project (1999), and the Index of Botanists (2001).

**Host-pathogen index.** Plant hosts are listed alphabetically by genus and species, followed by the author who first described them. Common and Samoan names follow the abbreviated author(s) names, in brackets. Below each host name in alphabetical order are potential disease-causing organisms isolated from that host and the name of the disease or most common symptom. An accession number follows specimens deposited in the American Samoa Land Grant herbarium (ASLG). Most of the organisms in this list are known pathogens but may be present as saprophytes. Pathogenicity tests were conducted only with *Corynespora cassiicola* on tomato, *Paecilomyces fumosoroseus* on Seychelles fluted scale, and *Metarhizium anisopliae* on rhinoceros beetle. Banana Bunchy Top Virus was confirmed by enzyme-linked immunosorbent assay (ELISA).

**Color plates.** Between the indexes are photographs of plant pathogens and plant disease signs or symptoms. Each plate is referred to in the indexes following the name of the pathogen or host.

**Pathogen-host index.** This is an alphabetical listing by genera of disease causing organisms followed by their authority and taxonomic classification. Below each pathogen are suggested species identifications based on morphology, growth characteristics in vivo or in culture, signs and symptoms, isolation from a known host, or published presence in American Samoa (McKenzie 1996). Unidentified species are listed as “sp.” Each species name is followed by the host from which it was isolated and the host’s common name.

**Fungus pathogens on insects.** Several known entomopathogenic fungi have been isolated from insects. Most American Samoans do not use chemical pesticides and enhancing the indigenous population of insect pathogens is a potential biological control option.

**English and Samoan plant names, botanical equivalents.** Latin scientific names are given for common English and Samoan plant names.

**List of host plants by family.** This is a useful section for references like Farr et al. (1986) and Whistler (1994a), where it is necessary to know plant families in order to find genus and species information.

**Partial list of pathogens recorded in American Samoa.** Most plant pathogenic fungi and bacteria recorded in American Samoa are in the publication by EHC McKenzie (1996). This list is an update of McKenzie’s publication and includes pathogenic organisms identified by the author from October 1998 to July 2002: The latter are followed by double asterisks (\*\*). Banana nematodes described by Grandison (1996) are followed by a single asterisk (\*).

**Authors of plant and fungus names.** Full names of abbreviated plant and fungus authors listed in the indexes.

**Bibliography.** List of sources used to identify plant pathogens, entomopathogens, nematodes, and local flora.



***Barringtonia samoensis*** A. Gray [faiaga]

*Phellinus noxius* — brown root rot

***Bidens alba*** (L.) DC. [beggar's-tick]

*Uromyces bidenticola* — rust (ASLG 127P)

***Bischofia javanica*** Blume ['o'a]

*Pestalotiopsis* sp. — leaf spot (ASLG 167P)

***Bixa orellana*** L. [lipstick-tree, loa]

*Cercospora bixae* — leaf spot

***Brassica chinensis*** var. *chinensis* (L.) Prain [Chinese cabbage, pak-choi, kapiši]

*Ascochyta* sp. — from leaf spots (ASLG 270P)

*Cercospora brassicicola* — from leaf necrosis (ASLG 271P)

*Colletotrichum gloeosporioides* — from leaf necrosis (ASLG 272P)

*Erwinia* sp. — bacterial crown rot (ASLG 041P)

*Leptosphaerulina* sp. — from leaf spots (ASLG 269P)

*Pythium* spp. — damping-off

***Bougainvillea spectabilis*** Willd. [bougainvillea, felila]

*Cercosporidium bougainvilleae* — leaf spot (ASLG 154P) (**Plates 4, 5**)

***Broussonetia papyrifera*** (L.) Venten. [paper-mulberry, u'a]

*Cercospora broussonetiae* — leaf spot

***Brunfelsia americana*** L. [lady-of-the-night]

*Colletotrichum* sp. — anthracnose (ASLG 202P)

*Lasiodiplodia theobromae* — on anthracnose lesion (ASLG 297P)

***Caladium*** Venten. x *hortulanum* [caladium]

*Phyllosticta* sp. — leaf spot

*Chaetomella* sp. — from dead leaf tissue

***Calophyllum neo-ebudicum*** Guillaumin [tamanu]

*Phellinus noxius* — brown root rot

***Cananga odorata*** (Lam.) Hook. f. & Thoms. [moso'oi]

*Colletotrichum gloeosporioides* — branch dieback

*Phellinus noxius* — brown root rot (ASLG 210P)



***Canarium harveyi*** Seem. [mafoa]

*Colletotrichum* sp. — leaf spot (ASLG 181P)

*Phellinus noxius* — brown root rot

***Canna indica*** L. [canna lily, fagamanu]

*Mycosphaerella* sp. — leaf spot

*Uredo pseudocannae* — rust

***Capsicum annuum*** L. [sweet and hot peppers, polo]

*Colletotrichum* sp. — anthracnose (ASLG 200P) (**Plate 6**)

*Phytophthora parasitica* — root and crown rot (ASLG 190P)

*Rhizopus stolonifer* — fruit rot (ASLG 201P)

***Carica papaya*** L. [papaya, esi]

*Colletotrichum gloeosporioides* — leaf spot (ASLG 171P)

*Corynespora cassiicola* — target leaf spot (ASLG 286P) (**Plates 7, 8**)

***Carissa grandiflora*** (E. Mey.) A. DC. [natal plum]

*Lasiodiplodia theobromae* — branch dieback (ASLG 274P) (**Plate 9**)

*Pestalotiopsis* sp. — leaf spot

***Cerbera manghas*** L. [lava]

*Phellinus noxius* — brown root rot

***Cieba pentandra*** (L.) Gaertn. [kapok, vavae]

*Phellinus noxius* — brown root rot (ASLG 208P)

***Citrus aurantifolia*** L. Swingle [lime]

*Lasiodiplodia theobromae* — branch dieback (ASLG 290P)

***Citrus* sp.** L. [citrus, moli]

*Capnodium* sp. — sooty mold

*Chaetomella* sp. — on leaves

*Colletotrichum gloeosporioides* — leaf anthracnose

*Lasiodiplodia theobromae* — on dead bark (ASLG 152P)

*Meloidogyne* sp. — root knot nematode

*Phellinus noxius* — (ASLG 248P)

*Phomopsis citri* — citrus melanose (ASLG 309P)

*Sphaceloma fawcettii* var. *scabiosa* — citrus scab (ASLG 169P)

***Cocos nucifera*** L. [coconut palm, niu]

- Colletotrichum* sp. — from coalesced leaf spots (ASLG 162P)
- Leptosphaeria* sp. — gray leaf blotch (ASLG 262P)
- Mycosphaerella* sp. — leaf spot (ASLG 283P)
- Pestalotiopsis palmarum* — gray leaf spot (ASLG 046P)
- Phoma* sp. — leaf spot (ASLG 263P)
- Phomopsis* sp. — leaf spot (ASLG 264P)
- Phyllosticta* sp. — leaf spot
- Septoria* sp. — from leaf spot
- causal agent unknown — American Samoa coconut yellowing (ASLG 226P)

***Codiaeum variegatum*** (L.) Blume [croton]

- Colletotrichum* sp. — leaf spot (ASLG 237P)

***Coix lacryma-jobi*** L. [sanasana]

- Mycosphaerella* sp. — leaf spot (ASLG 281P)

***Colocasia esculenta*** (L.) Schott [taro, talo]

- Cladosporium colocasiae* — sooty mold
- Colletotrichum gloeosporioides* — from leaf blight lesions (ASLG 256P)
- Colletotrichum* sp. — from chlorotic leaves (ASLG 233P)
- Curvularia* sp. — from Leptosphaerulina leaf spot (ASLG 170P)
- Dasheen Mosaic Virus — leaf chlorosis, discoloration (**Plate 10**)
- Fusarium solani* — root and corm rot (ASLG 308P)
- Glomerella cingulata* — from leaf blight lesions (ASLG 257P)
- Gonatobotryum* sp. — on leaves and petioles
- Leptosphaeria* sp. — from Leptosphaerulina leaf spot (ASLG 147P)
- Leptosphaerulina trifolii* — leaf spot (ASLG 143P) (**Plates 11, 12**)
- Marasmiellus stenophyllus* — stem and corm rot (ASLG 027M)
- Phoma* sp. — from leaf blight lesions (ASLG 255P)
- Phytophthora colocasiae* — taro leaf blight (ASLG 003P) (**Plates 13, 14**)
- Pythium aphanidermatum* — root and corm rot (ASLG 278P)
- Pythium* sp. — corm rot (ASLG 036P)
- Septoria* sp. — from Leptosphaerulina leaf spot

***Cordia aspera*** Forst. f. [tou]

- Phellinus noxius* — brown root rot

***Cordyline terminalis*** (L.) Kunth [ti]

- Ascochyta* sp. — from leaf spot
- Colletotrichum* sp. — from leaf spot

*Pestalotiopsis* sp. — from leaf spot  
*Phoma* sp. — leaf spot (ASLG 231P)  
*Phyllosticta* sp. — from leaf spot

***Crinum asiaticum*** L. [crinum lily, lau talotalo]  
*Mycosphaerella* sp. — leaf spot (ASLG 285P)

***Crossostylis biflora*** Forst. [saitamu]  
*Phellinus noxius* — brown root rot

***Cucumis sativus*** L. [cucumber, kukama]  
*Cercospora citrullina* — leaf spot  
*Corynespora cassiicola* — leaf spot (ASLG 184P)  
*Didymella bryoniae* — gummy stem blight (ASLG 207P)  
*Meloidogyne* sp. — root knot nematode  
*Oidium* sp. — powdery mildew  
*Phoma cucurbitacearum* — gummy stem blight, leaf spot  
*Pythium aphanidermatum* — wilt, fruit, root, crown rot (**Plates 15, 16**)  
*Pythium* spp. — damping-off, root and crown rot (ASLG 177P)  
*Rhizoctonia solani* — damping-off, fruit rot (ASLG 142P)

***Cuphea melvilla*** Lindl. [firecracker plant]  
*Phyllosticta* sp. — from necrotic leaf tip (ASLG 294P)

***Cyperus rotundus*** L. [purple nut sedge, mumuta]  
*Puccinia canaliculata* — leaf rust (ASLG 059P)

***Dendrolobium umbellatum*** (L.) Benth. [lala]  
*Cercospora* sp. — leaf spot (ASLG 145P)  
*Pestalotiopsis* sp. — from leaf spot

***Digitaria setigera*** Roem. & F.W. Schultz [crab grass]  
*Puccinia oahuensis* — leaf and stem rust (ASLG 130P)

***Diffenbachia*** Schott [dumbcane]  
*Lophodermium* sp. — leaf spot

***Dioscorea bulbifera*** L. [bitter yam, soi]  
*Cercospora* sp. — leaf spot

***Diospyros samoensis*** A. Gray [au'auli]

*Phellinus noxius* — brown root rot

***Dysoxylum samoense*** A. Gray [tufaso]

*Phellinus noxius* — brown root rot

*Pseudocercospora subsessilis* — leaf spot (ASLG 199P)

***Elattostachys falcata*** (A. Gray) Radlk. [taputo'i]

*Phellinus noxius* — brown root rot

***Erythrina subumbrans*** (Hassk.) Merr. [gatae palagi]

*Phoma erythrinicola* — leaf spot

***Erythrina variegata*** L. [coral tree, gatae]

*Colletotrichum gloeosporioides* — (ASLG 073P) leaf spot

*Phoma* sp. — leaf spot (ASLG 234P)

***Euphorbia pulcherrima*** Willd. ex Klotzsch [poinsettia]

*Colletotrichum* sp. — leaf anthracnose

*Dothiorella* sp. — branch dieback

*Glomerella* sp. — leaf necrosis

*Lasiodiplodia theobromae* — branch dieback (ASLG 172P)

*Phoma* sp. — branch dieback (ASLG 151P)

*Phomopsis* sp. — branch dieback

*Sphaceloma poinsettiae* — leaf anthracnose

***Fagraea berteriana*** A. Gray [pualulu]

*Sphaerulina* sp. — leaf spot (ASLG 258P)

*Colletotrichum* sp. — leaf spot (ASLG 319P)

***Faradaya amicum*** Seem. [mamalupe]

*Pestalotiopsis* sp. — leaf spot (ASLG 192P)

***Ficus elastica*** Roxb. ex Horne. [rubber plant]

*Mycosphaerella* sp. — leaf spot (ASLG 254P)

***Ficus obliqua*** Forst. f. [banyan tree]

*Phellinus noxius* — brown root rot

***Ficus scabra*** Forst. f. [mati'ata]

*Phyllachora* sp. — tar spot (ASLG 198P)

***Ficus tinctoria*** Forst. f. [dyer's fig; mati]

*Phyllachora* sp. — tar spot (ASLG 229P)

*Phellinus noxius* — brown root rot (ASLG 189P)

***Fluggea flexuosa*** Muell. Arg. [poumuli]

*Phellinus noxius* — brown root rot (ASLG 251P)

***Glochidion ramiflorum*** Forst. [masame]

*Phellinus noxius* — brown root rot

***Gloxinia perennis*** Druce [Canterbury bells]

*Colletotrichum* sp. — blossom blight (ASLG 300P)

*Corynespora cassiicola* — on blighted blossoms (ASLG 301P)

***Hedychium coronarium*** J. König ex Retz. [white ginger, teuila]

*Colletotrichum* sp. — leaf spot

*Leptosphaeria* sp. — leaf spot (ASLG 260P)

*Mycosphaerella hedychii* — leaf spot

*Pestalotiopsis* sp. — leaf spot

*Phoma* sp. — leaf spot (ASLG 261P)

***Heliconia psittacorum*** L. fil [parrot flower]

*Curvularia* sp. — leaf spot

*Dothiorella* sp. — from leaf spot

*Leptosphaeria* sp. — from leaf spot

***Heliconia humilis*** L. [lobster claw]

*Colletotrichum* sp. — from leaf anthracnose

*Curvularia* sp. — from leaf anthracnose (ASLG 158P)

*Mycosphaerella* sp. — from leaf anthracnose

*Physalospora* sp. — from leaf anthracnose

*Septoria* sp. — from leaf anthracnose (ASLG 157P)

***Hernandia nymphaeifolia*** (Presl.) Kub. [pu'a]

*Phellinus noxius* — brown root rot

***Hibiscus manihot*** L. [edible hibiscus, pele]

*Cercospora* sp. — leaf spot (ASLG 218P)

***Hibiscus rosa-sinensis*** L. [China rose, Hawaiian hibiscus, 'aute]

*Cercospora althaeina* — leaf spot (ASLG 166P)

*Colletotrichum* — leaf spot (ASLG 140P)  
*Curvularia* sp. — leaf anthracnose  
*Leptosphaeria* sp. — from leaf spots (ASLG 241P)  
*Phellinus noxius* — root and crown rot (ASLG 188P)  
*Phoma* sp. — leaf spot (ASLG 239P)  
*Phyllosticta* sp. — from leaf spots (ASLG 165P)  
unidentified — sooty mold

***Hibiscus tiliaceus*** L. [beach hibiscus, fau]

*Colletotrichum gloeosporioides* — (ASLG 317P) leaf spot  
*Pestalotiopsis* sp. — leaf spot  
*Phellinus noxius* — root and crown rot (ASLG 203P) (**Plate 18**)  
*Phyllachora* sp. — tar spot (ASLG 038P)

***Inocarpus fagifer*** (Parkinson) Fosb. [ifi]

*Phellinus noxius* — brown root rot

***Intsia bijuga*** (Colebr.) Kuntze [ifilele]

*Colletotrichum* sp. — leaf spot (ASLG 179P)  
*Phellinus noxius* — root and crown rot (**Plate 19**)  
*Phyllachora afzeliae* — tar spot (ASLG 211P)

***Ipomoea alba*** L. [moonflower, fue sina]

*Colletotrichum* sp. — leaf spot

***Ipomoea pes-caprae*** (L.) R. Br. [beach morning-glory, fue kula, fue mola]

*Cercospora* sp. — leaf spot

***Iris*** L. [iris]

*Dothiorella* sp. — from leaf spot

***Lagerstroemia indica*** L. [crape-myrtle]

*Oidium* sp. — powdery mildew

***Lansium domesticum*** Correa [langsat]

*Fusarium solani* — branch dieback (ASLG 314P)  
*Nectria* sp. — branch dieback (ASLG 259P)

***Ludwigia octovalvis*** (Jacq.) Raven [primrose willow]

*Cercospora* sp. — leaf spot (ASLG 175P)

***Lycopersicon esculentum*** Miller [tomato]

- Botryosphaeria dothidea* — from leaf spot (ASLG 095P)  
*Corynespora cassiicola* — leaf spot (ASLG 056P)  
*Colletotrichum gloeosporioides* — leaf spot  
*Dothiorella* sp. — from leaf spot  
*Erwinia carotovora* subsp. *carotovora* — bacterial canker  
*Meloidogyne incognita* — root knot nematode (ASLG 164P) (**Plates 20, 21**)  
*Pestalotiopsis* sp. — from leaf spot (ASLG 096P)  
*Pseudomonas solanacearum* race 1 — bacterial wilt (ASLG 141P)  
*Sclerotinia sclerotiorum* — stem canker  
*Xanthomonas campestris* pv. *vesicatoria* — bacterial wilt (ASLG 224P)

***Macaranga harveyana*** (Muell. Arg.) Muell. Arg. [lau pata, pata]

- Phellinus noxius* — brown root rot (ASLG 176P)

***Macaranga stipulosa*** Muell. Arg. [lau fitu]

- Phellinus noxius* — brown root rot

***Mangifera indica*** L. [mango, mago]

- Colletotrichum gloeosporioides* — anthracnose (ASLG 194P) (**Plate 22**)  
*Dendrophoma* sp. — from leaf spots  
*Lophodermium* sp. — on dead stems  
*Pestalotiopsis mangiferae* — gray leaf spot (ASLG 195P)  
*Stigmina mangiferae* — leaf spot (ASLG 295P) (**Plate 23**)

***Manihot esculenta*** Crantz [tapioca, manioka]

- Botryosphaeria* sp. — from leaf spots  
*Cercospora* sp. — leaf spot  
*Cercosporidium henningsii* — leaf spot (ASLG 065P)  
*Mycosphaerella henningsii* — leaf spot (ASLG 311P)

***Manilkara zapote*** (L.) D. Royen [sapote]

- Pestalotiopsis* sp. — gray leaf spot (ASLG 197P)

***Merremia umbellata*** (L.) Hall. f. [fue lautetele]

- Cercospora* sp. — leaf spot

***Metroxylon vitiense*** (H. Wendl.) Hook. f. [sago palm, niu o lotuma]

- Phyllachora* sp. — tar spot (ASLG 273P)

***Mikania micrantha*** Kunth [mile-a-minute vine, fue saina]

*Cercospora mikaniacola* — leaf spot (ASLG 037P)  
*Cercospora* sp. — leaf spot  
*Marasmiellus* sp. — on dead stem

***Momordica charantia*** L. [bitter gourd]

*Cercospora citrullina* — leaf spot (ASLG 323P) (**Plate 24**)

***Morinda citrifolia*** L. [nonu]

*Guignardia morindae* — leaf spot (ASLG 193P)  
*Phellinus noxius* — brown root rot

***Musa acuminata*** x ***M. balbisiana*** Colla [edible banana, fa'i]

Banana Bunchy Top Virus — stunting, sterility, plant death (ASLG 004P) (**Plate 25**)  
*Cordana musae* — leaf spot (ASLG 284P) (**Plate 26**)  
*Curvularia* sp. — leaf spot (ASLG 013P)  
*Helicotylenchus* sp. — spiral nematode  
*Leptosphaeria* sp. — from leaf blight (ASLG 121P)  
*Marasmiellus semiustus* — pseudostem rot (ASLG 021M)  
*Meloidogyne incognita* — root knot nematode (ASLG 302P)  
*Mycosphaerella fijiensis* — black leaf streak (**Plates 27, 28**)  
*Paracercospora fijiensis* — black leaf streak (ASLG 287P)  
*Phyllachora musicola* — black cross leaf streak (**Plate 29**)  
*Phyllosticta musarum* — freckle (ASLG 288P)  
*Radopholus similis* — lesion nematode  
*Uredo musae* — banana rust (ASLG 282P)

***Myristica fatua*** Houtt. [Samoan nutmeg, 'atone]

*Phellinus noxius* — brown root rot (ASLG 174P)

***Neonauclea forsteri*** (Seem. ex Havil.) Merr. [afa]

*Phellinus noxius* — brown root rot

***Nicolaia elatior*** Horan. [torch ginger]

*Pestalotiopsis* sp. — leaf blight

***Pandanus whitmeeanus*** Mart. [screwpine; paogo, fasa, lau fala]

*Pestalotiopsis palmarum* — leaf spot (ASLG 044P)  
*Pestaloziella* sp. — from leaf spot

***Paspalum conjugatum*** Bergius [sour paspalum, sourgrass]

*Physopella* sp. — rust (ASLG 303P)



***Persea americana*** Miller [avocado, 'avoka]

*Botryosphaeria dothidea* — from leaf spot (ASLG 120P)

*Discosia* sp. — from leaf spot

*Dothiorella* sp. (*Fusicoccum*) — branch canker (ASLG 136P)

*Fusarium solani* — root rot (ASLG 196P)

*Lasiodiplodia theobromae* — root rot (ASLG 205P)

***Phaseolus vulgaris*** L. [French bean, green bean, etc.]

*Colletotrichum lindemuthianum* — anthracnose (ASLG 304P)

***Philodendron*** Schott [heart-leaf philodendron]

*Physalospora* sp. — leaf spot (ASLG 159P)

***Piper methysticum*** Forst. f. [kava]

Cucumber mosaic cucumovirus — kava wilt, dieback (ASLG 313P) (**Plate 30**)

***Pipturus argenteus*** (Forst. f.) Wedd. [soga]

*Phellinus noxius* — brown root rot

***Planchonella grayana*** St. John ['ala'a]

*Phellinus noxius* — brown root rot

***Planchonella samoensis*** H.J. Lam ex Christoph. [mamalava]

*Phellinus noxius* — brown root rot

***Planchonella torricellensis*** (K. Schum.) Lam [mamalava]

*Pestalotiopsis* sp. — leaf spot

*Rhynchosphaeria* sp. — 'shot hole' leaf spot

***Plumeria*** sp. L. [frangipani, pua fiti]

*Coleosporium plumeriae* — rust on leaves (**Plate 31**)

***Polyscias scutellaria*** '**Tricochleata**' (W. Bull) L.H. Bailey [panax, tanitani]

*Cercospora* sp. — leaf spot (ASLG 168P) (**Plate 32**)

*Colletotrichum gloeosporioides* — leaf spot

*Glomerella* sp. — from leaf spot

***Pometia pinnata*** Forst. [tava]

*Cladosporium* sp. — sooty mold

*Phellinus noxius* — brown root rot

***Pritchardia pacifica*** Seem. & H. Wendl. ex Wendl. [Fiji Island fan palm, niu piu]

*Bipolaris* sp. — leaf spot (ASLG 316P)

*Botryosphaeria* sp. — on leaf spot (ASLG 129P)

*Colletotrichum* sp. — leaf spot (ASLG 213P)

*Curvularia* sp. — from leaf spots (ASLG 214P)

*Leptosphaeria* sp. — from leaf spots (ASLG 212P)

*Pestalotiopsis palmarum* — leaf spot (ASLG 128P)

***Pseuderanthemum carruthersii* var. *reticulatum*** (Seemann) Guillaumin [none known]

*Cercospora* sp. (ASLG 221P)

*Colletotrichum* sp. — leaf spot (ASLG 325P)

*Glomerella* sp. — leaf spot (ASLG 180P)

***Puccinia canaliculata*** (Schwein.) Lagerh. [rust fungus on purple nut sedge]

*Sphaerellopsis filum* — mycoparasite of *P. canaliculata* (ASLG 060P) (**Plate 17**)

***Pueraria lobata*** (Willd.) Ohwi [kudzu]

*Cercospora* sp. — leaf spot (ASLG 298P)

*Colletotrichum* sp. — angular leaf spot

*Guignardia* sp. — from leaf spot (ASLG 116P)

*Synchytrium minutum* — ‘false rust’ (ASLG 299P)

***Rhus taitensis*** Guillemin [tavai]

*Phellinus noxius* — brown root rot

*Phoma* sp. — leaf spot (ASLG 220P)

***Rosa chinensis*** Jacq. [rose]

*Marssonina rosae* — leaf spot (ASLG 289P)

*Mycosphaerella rosicola* — leaf spot (ASLG 209P)

***Samanea saman*** (Jacq.) Merr. [monkeypod tree, tamaligi palagi]

*Phellinus noxius* — brown root rot

***Sanchezia*** Ruiz & Pav. [not known]

*Mycosphaerella* sp. — leaf spot

***Solanum melongena*** L. [eggplant, aubergine, israeli]

*Phoma* sp. — leaf spot, fruit spot (ASLG 160P)

*Cercospora egenula* — leaf spot (ASLG 206P)

*Cercospora melongenae* — leaf spot (ASLG 161P)

*Cercospora* sp. — leaf spot (ASLG 276P)  
*Rhizopus stolonifer* — fruit rot (ASLG 183P)

***Solanum nigrum*** L. [black nightshade, magalo]

*Cercospora* sp. — leaf spot

***Spathoglottis plicata*** Blume [Philippine orchid]

*Colletotrichum* sp. — leaf anthracnose (**Plate 33**)

*Lasiodiplodia theobromae* — from leaf blight (ASLG 155P)

*Leptosphaeria* sp. — from leaf blight

*Phyllosticta* sp. — from leaf blight

***Spondias dulcis*** Park. [vi apple]

*Cercospora* sp. — leaf spot (ASLG 247P)

*Mycosphaerella* sp. — leaf spot (ASLG 293P)

*Phellinus noxius* — brown root rot

***Syngonium podophyllum*** Schott [nephthytis]

*Cercospora* sp. — leaf spot

*Colletotrichum* sp. — leaf anthracnose

*Leptosphaeria* sp. — from leaf spots (ASLG 049P)

*Phyllosticta* sp. — from leaf anthracnose (ASLG 173P)

***Syzygium inophylloides*** (A. Gray) C. Muell. [asi]

*Phellinus noxius* — brown root rot

***Tarenna sambucina*** (Forst. f.) Durand [ma'anunu]

*Lasiodiplodia theobromae* — branch dieback (ASLG 279P)

*Meloidogyne* sp. — root knot nematode

***Terminalia richii*** A. Gray [malili]

*Phellinus noxius* — brown root rot

***Terminalia samoensis*** Rech. [talie]

*Cercospora* sp. — leaf spot (ASLG 277P)

***Theobroma cacao*** L. [cacao, koko]

*Physalospora* sp. — from leaf anthracnose

***Uromyces* sp.** (Link) Unger, nom. cons. [rust fungus on *Vigna* sp.]

*Sphaerellopsis filum* — mycoparasite of *Uromyces* spp. (ASLG 187P)

***Veitchia merrillii*** (Becc.) H. Moore [Manila palm]

*Cercospora* sp. — from leaf spots (ASLG 156P)

*Dothiorella* sp (*Fusicoccum*). — from leaf spot

*Fusarium oxysporum* — from rotted roots (ASLG 307P)

*Pestalospaeria* sp. — leaf spot (ASLG 178P)

*Pestalotiopsis palmarum* — gray leaf spot

*Phyllosticta* sp. — from leaf spots

***Vigna unguiculata*** (L.) Walp. **subsp. *sesquipedalis*** (L.) Verdc. [yard-long bean, bush bean]

*Cercospora cruenta* — leaf spot (ASLG 252P)

*Colletotrichum gloeosporioides* — anthracnose (ASLG 191P)

*Colletotrichum lindemuthianum* — anthracnose (ASLG 245P)

*Glomerella cingulata* — anthracnose (ASLG 191P)

*Leptosphaerulina trifolii* — leaf spot (ASLG 325P)

*Oidium* sp. — powdery mildew (ASLG 243P)

*Pseudocercospora cruenta* — leaf spot (ASLG 185P)

*Uromyces appendiculatus* — leaf rust (ASLG 244P)

*Uromyces* sp. — leaf rust (ASLG 186P)

***Zea mays*** L. [corn, sana]

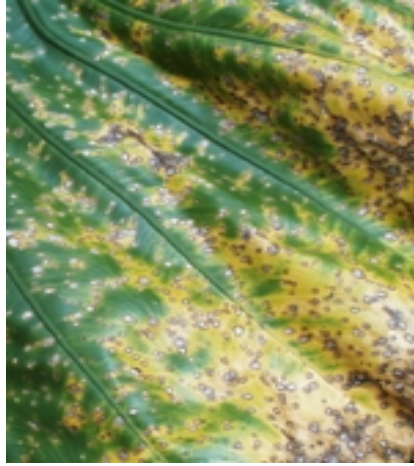
*Pythium aphanidermatum* — root rot

***Zinnia violacea*** Cav. [zinnia]

*Cercospora zinniae* — leaf spot (ASLG 217P)



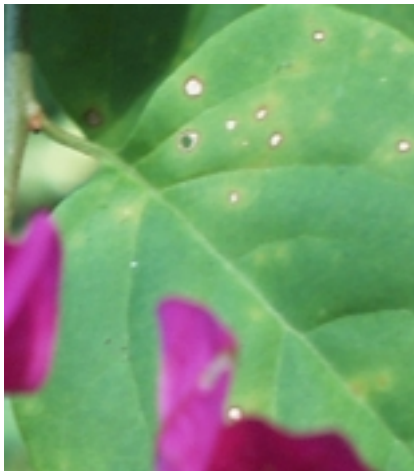
1. *Alocasia* leaf spot caused by *Mycosphaerella alocasiae*.



2. *Mycosphaerella* leaf spots and chlorosis on giant taro (*Alocasia*).



3. *Colletotrichum* leaf spot on breadfruit (*Artocarpus*).



4. *Cercosporidium* leaf spot on bougainvillea.



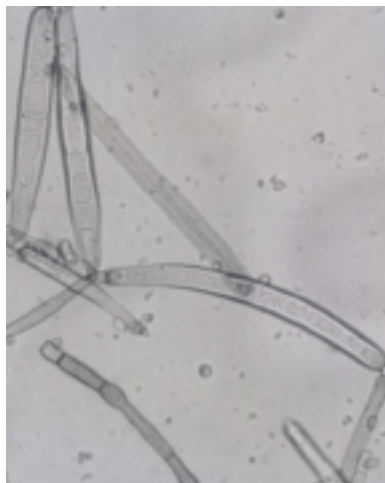
5. Conidiophores and spores of *Cercosporidium bougainvilleae*.



6. *Colletotrichum* acervuli and setae on pepper (*Capsicum*).



7. Papaya leaf spot caused by *Corynespora cassicola*.



8. Conidiophores and spores of *Corynespora cassicola*.



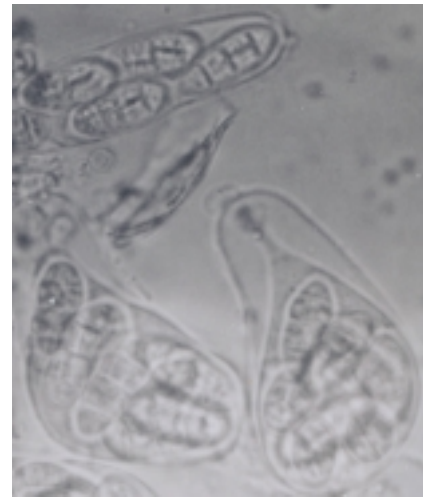
9. Branch dieback of *Carissa* by *Lasiodiplodia theobromae*.



10. Dasheen Mosaic Virus on taro (*Colocasia*-type).



11. White leaf spot on taro caused by *Leptosphaerulina trifolii*.



12. Asci and ascospores of *Leptosphaerulina trifolii*.



13. Taro leaf blight caused by *Phytophthora colocasiae*.



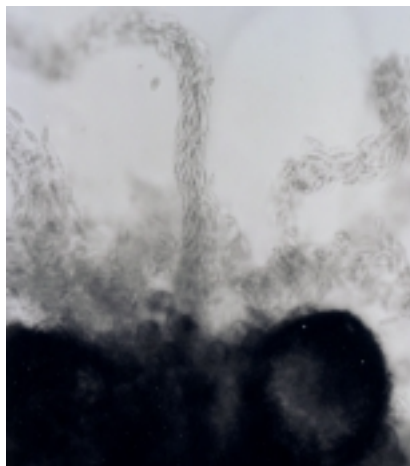
14. White spores around taro leaf blight lesions (*Colocasia taro*).



15. Cucumber wilt and dieback caused by a species of *Pythium*.



16. *Pythium aphanidermatum*: oogonium, antheridium, oospore.



17. Spores of *Sphaerellopsis filum*, a parasite of rust fungi.



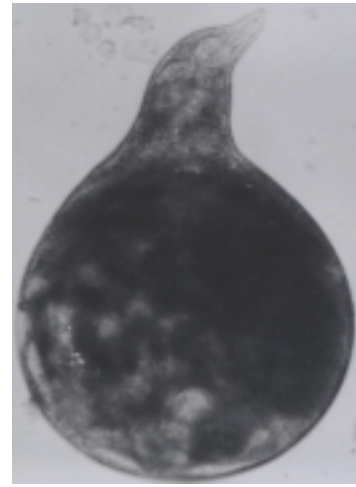
18. Crusty mycelium of *P. noxius* on rotted roots of *Hibiscus*.



19. *Phellinus noxius* on multi-stemmed forest tree (*Intsia*).



20. Galls on roots of tomato caused by *Meloidogyne* sp.



21. Female root knot nematode, *Meloidogyne incognita*.



22. Mango flower blight caused by *Colletotrichum gloeosporioides*.



23. Angular leaf spot of mango caused by *Stigmina mangiferae*.



24. *Cercospora* leaf spot of bitter melon (*Momordica*).



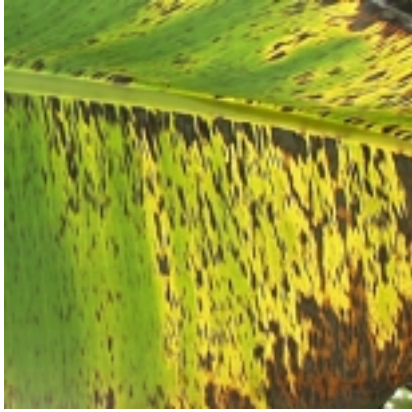
25. Stunted sucker growth caused by Banana Bunchy Top Virus.



26. *Cordana* leaf spot of banana caused by *Cordana musae*.



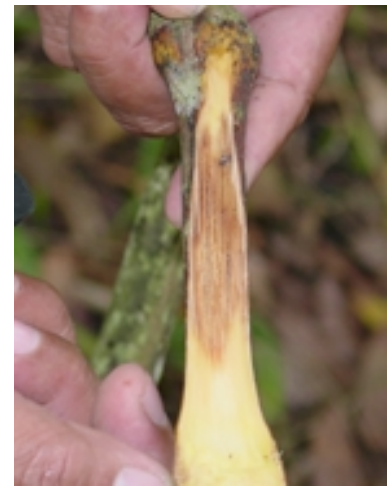
27. Black leaf streak caused by *Mycosphaerella fijiensis*.



28. Small, reddish streaks due to early *M. fijiensis* infection.



29. Black cross leaf spot of banana (*Phyllachora musicola*).



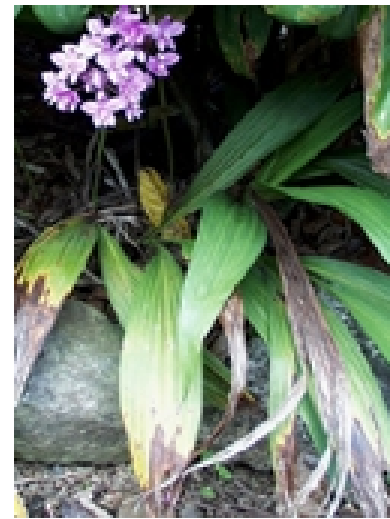
30. Stem discoloration and dieback caused by CMV.



31. *Coleosporium* rust on upper surface of plumeria leaf.



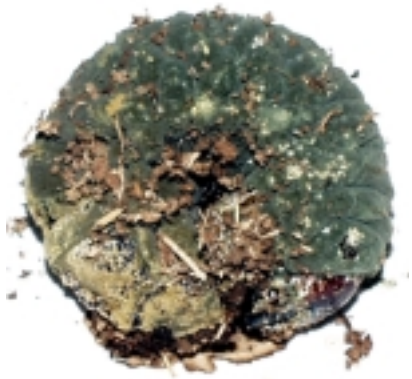
32. *Cercospora* leaf spot on panax (*Polyscias*).



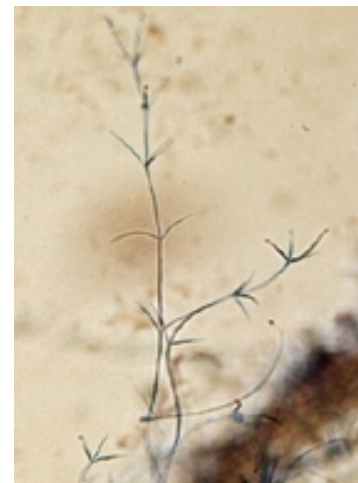
33. *Colletotrichum* anthracnose on Philippine orchid (*Spathoglottis*).



34. *Metarhizium* fungus on cicada before formation of green spores.



35. Green spores of *Metarhizium anisopliae* on rhino beetle larva.

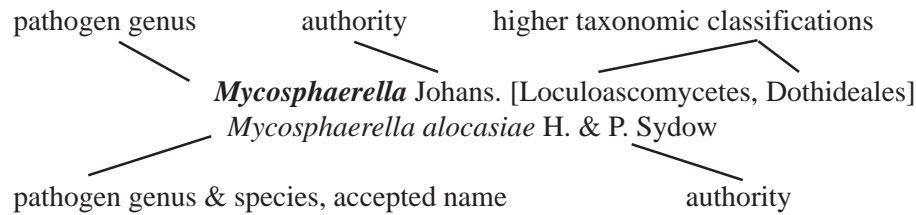


36. Conidiophore of *Verticillium lecanii* on aphid.



## PATHOGEN-HOST INDEX

---



---

Format used in the pathogen-host list (from Farr et al. 1989)

---

### *Ascochyta* Lib. [Coelomycetes]

*Ascochyta* sp.

*Brassica chinensis* var. *chinensis* (Chinese cabbage)

*Cordyline terminalis* (ti)

### **Banana Bunchy Top Virus**

*Musa* hybrids (bananas and plantains) (**Plate 25**)

### *Bipolaris* Shoemaker [Hyphomycetes]

*Bipolaris* sp. (Fiji Island fan palm)

### *Botryosphaeria* Ces. & De Not. [Loculoascomycetes, Dothideales]

*Botryosphaeria dothidea* (Moug.:Fr.) Ces. & De Not.

*Lycopersicon esculentum* (from leaf spot on tomato)

*Persea americana* (avocado)

*Botryosphaeria* sp.

*Manihot esculenta* (tapioca)

*Pritchardia pacifica* (Fiji Island fan palm)

### *Capnodium* Mont. [Loculoascomycetes, Dothideales]

*Capnodium* sp.

*Citrus* sp. (citrus)

### *Cercospora* Fresen. [Hyphomycetes]

*Cercospora althaeina* Sacc.

*Hibiscus rosa-chinensis* (Hawaiian hibiscus)

*Cercospora bixae* Allesch. & F. Noack

*Bixia orellana* (lipstick tree)

*Cercospora broussonetiae* Chupp & Linder

*Broussonetia papyrifera* (paper mulberry)

*Cercospora brassicicola* Henn.

*Brassica chinensis* var. *chinensis* (Chinese cabbage)

*Cercospora citrullina* Cooke

*Cucumis sativus* (cucumber)

*Momordica charantia* (bitter gourd) (**Plate 24**)  
*Cercospora cruenta* Latham  
*Vigna unguiculata* (yard-long bean)  
*Cercospora egenula* (H. Syd.) Chupp & Doidge  
*Solanum melongena* (aubergine)  
*Cercospora mikaniicola* F. Stevens  
*Mikania micrantha* (mile-a-minute-vine)  
*Cercospora melongenae* C. Welles  
*Solanum melongena* (aubergine)  
*Cercospora zinniae* Ellis & G. Martin  
*Zinnia violacea* (zinnia)  
*Cercospora* sp.  
*Alocasia macrorrhiza* (giant taro)  
*Artocarpus altilis* (breadfruit)  
*Dendrolobium umbellatum* (lala)  
*Dioscorea bulbifera* (bitter yam)  
*Hibiscus manihot* (edible hibiscus)  
*Ipomoea pes-caprae* (beach morning-glory)  
*Ludwigia octovalvis* (primrose willow)  
*Manihot esculenta* (tapioca)  
*Meremia umbellata* (morning-glory)  
*Mikania micrantha* (mile-a-minute vine)  
*Polyscias scutellaria* 'Tricochleata' (panax) (**Plate 32**)  
*Pseuderanthemum carruthersii* var. *reticulatum* (none known)  
*Pueraria lobata* (kudzu)  
*Solanum melongena* (aubergine)  
*Solanum nigrum* (black nightshade)  
*Spondias dulcis* (vi apple)  
*Syngonium podophyllum* (nephthytis)  
*Terminalia samoensis* (talie)  
*Veitchia merrillii* (Manila palm)

***Cercosporidium*** Earle [Hyphomycetes]

*Cercosporidium bougainvilleae* (Muntanola) Sobers & C.P. Seymour  
*Bougainvillea* sp. (bougainvillea) (**Plates 4, 5**)  
*Cercosporidium henningsii* (Allesch.) Deighton  
*Manihot esculenta* (tapioca)

***Chaetomella*** Fuckel [Coelomycetes]

*Chaetomella* sp.  
*Caladium hortulanum* (caladium)  
*Citrus* sp. (citrus)

***Cladosporium*** Link:Fr. [Hyphomycetes]

*Cladosporium colocasiae* Sawada  
*Colocasia esculenta* (taro)  
*Cladosporium* sp.  
*Pometia pinnata* (tava)

***Coleosporium*** Lev. [Basidiomycetes, Uredinales]

*Coleosporium plumeriae* Pat.

*Plumeria* sp. (frangipani) (**Plate 31**)

**Colletotrichum** Corda in Sturm [Coelomycetes]

*Colletotrichum gloeosporioides* (Penz.) Penz. & Sacc. in Penz.

*Alocasia macrorrhiza* (giant taro)

*Artocarpus altilis* (breadfruit) (**Plate 3**)

*Brassica chinensis* var. *chinensis* (Chinese cabbage)

*Cananga odorata* (moso'oi)

*Carica papaya* (papaya)

*Citrus* sp. (citrus)

*Colocasia esculenta* (taro)

*Erythrina variegata* (coral tree)

*Hibiscus tiliaceus* (beach hibiscus)

*Lycopersicon esculentum* (tomato)

*Mangifera indica* (mango) (**Plate 22**)

*Polyscias scutellaria* 'Tricochleata' (panax) (**Plate 32**)

*Pseuderanthemum reticulatum* (none known)

*Vigna unguiculata* (yard-long bean)

*Colletotrichum lindemuthianum* (Sacc. & Magnus) Lams.-Scrib.

*Phaseolus vulgaris* (French or green bean)

*Vigna unguiculata* (yard-long bean)

*Colletotrichum* sp.

*Alocasia cucullata* (Chinese taro)

*Brunfelsia americana* (lady-of-the-night)

*Canarium harveyi* (mafoa)

*Capsicum annuum* (sweet or hot pepper) (**Plate 6**)

*Cocos nucifera* (coconut palm)

*Codiaeum variegatum* (croton)

*Colocasia esculenta* (taro)

*Cordyline terminalis* (ti)

*Euphorbia pulcherrima* (poinsettia)

*Fagraea berteriana* (pualulu)

*Gloxinia perennis* (Canterbury bells)

*Hedychium coronarium* (white ginger)

*Heliconia humilis* (lobster claw)

*Hibiscus rosa-sinensis* (Hawaiian hibiscus)

*Intsia bijuga* (ifilele)

*Ipomoea alba* (morning-glory vine)

*Pritchardia pacifica* (Fiji Island fan palm)

*Pseuderanthemum reticulatum* (none known)

*Pueraria lobata* (kudzu)

*Spathoglottis plicata* (Philippine orchid) (**Plate 33**)

*Syngonium* sp. (nephthytis)

**Cordana** G. Preuss [Hyphomycetes]

*Cordana musae* (A. Zimmerm.) Hohn.

*Musa* hybrid (edible banana) (**Plate 26**)

**Corynespora** H.T. Gussow [Hyphomycetes]

*Corynespora cassiicola* (Berk. & M.A. Curtis) C.T. Wei

*Carica papaya* (papaya) (**Plates 7, 8**)

*Cucumis sativus* (cucumber)  
*Gloxinia perennis* (Canterbury bells)  
*Lycopersicon esculentum* (tomato)

**Cucumber mosaic cucumovirus**

*Piper methysticum* (kava) (**Plate 30**)

***Curvularia*** Boedijn [Hyphomycetes]

*Curvularia* sp.

*Colocasia esculenta* (taro)  
*Heliconia humilis* (lobster claw)  
*Heliconia psittacorum* (parrot flower)  
*Hibiscus rosa-sinensis* (Hawaiian hibiscus)  
*Musa* hybrid (edible banana)  
*Pritchardia pacifica* (Fiji Island fan palm)

***Daldinia*** Ces. & De Not., nom. cons. [Pyrenomycetes, Xylariales]

*Daldinia concentrica* (Bolton:Fr.) Ces. & De Not.  
*Citrus* sp. (on citrus wood)

**Dasheen Mosaic Virus**

*Colocasia esculenta* (taro) (**Plate 10**)

***Dendrophoma*** Sacc. [Coelomycetes]

*Dendrophoma* sp.

*Mangifera indica* (mango)

***Didymella*** Sacc. [Loculoascomycetes, Dothideales]

*Didymella bryoniae* (Auersw.) Rehm  
*Cucumis sativus* (cucumber)

***Discosia*** Lib. [Coelomycetes]

*Discosia* sp.

*Persea americana* (avocado)

***Dothiorella*** Sacc. [Coelomycetes]

*Dothiorella* sp.

*Euphorbia pulcherrima* (poinsettia)  
*Heliconia psittacorum* (parrot flower)  
*Iris* sp. (iris)  
*Lycopersicon esculentum* (tomato)  
*Persea americana* (avocado)  
*Veitchia merrillii* (Manila palm)

***Erwinia*** Winslow, Broadhurst Buchanan, Krumwiede, Rogers & Smith,  
1920 [Enterobacteriaceae]

*Erwinia carotovora* subsp. *carotovora* (Jones) Dye  
*Lycopersicon esculentum* (tomato)

*Erwinia* sp.

*Brassica chinensis* var. *chinensis* (Chinese cabbage)

**Fusarium** Link: Fr. [Hyphomycetes]

- Fusarium oxysporum* Schlechtend.: Fr.
- Veitchia merrillii* (Manila palm)
- Fusarium solani* (Mart.) Sacc.
- Colocasia esculenta* (taro)
- Lansium domesticum* (langsat)
- Persea americana* (avocado)

**Fusicoccum** Corda in Sturm [Coelomycetes]

- Fusicoccum* sp.
- Persea americana* (avocado)
- Veitchia merrillii* (Manila palm)

**Glomerella** Spauld. & H. Schrenk [Pyrenomycetes, Phyllachorales]

- Glomerella cingulata* (Stoneman) Spauld. & H. Schrenk
- Alocasia macrorrhiza* (giant taro)
- Colocasia esculenta* (taro)
- Vigna unguiculata* (yard-long bean)
- Glomerella* sp.
- Artocarpus altilis* (breadfruit)
- Euphorbia pulcherrima* (poinsettia)
- Polyscias scutellaria* 'Tricochleata' (panax)
- Pseuderanthemum reticulatum* (none known)

**Gonatobotryum** Sacc. [Hyphomycetes]

- Gonatobotryum* sp.
- Colocasia esculenta* (taro)

**Guignardia** Viala & Ravaz [Loculoascomycetes, Dothideales]

- Guignardia morindae* (Koorders) van der Aa
- Morinda citrifolia* (nonu)
- Guignardia* sp.
- Pueraria lobata* (kudzu)

**Helicotylenchus** Steiner, 1945 [Hoplolaimidae, Hoplolaiminae]

- Helicotylenchus* spp.
- Musa* hybrid (edible banana)

**Lasiodiplodia** Ellis & Everh. [Coelomycetes]

- Lasiodiplodia theobromae* (Pat.) Griffon & Maubl.
- Brunfelsia americana* (lady-of-the-night)
- Carissa grandiflora* (natal plum) (**Plate 9**)
- Citrus aurantifolia* (lime)
- Citrus* sp. (citrus)
- Euphorbia pulcherrima* (poinsettia)
- Persea americana* (avocado)
- Spathoglottis plicata* (Philippine orchid)
- Tarennia sambucina* (ma'anunu)

**Leptosphaeria** Ces. & De Not., nom. cons. [Loculoascomycetes, Dothideales]

- Leptosphaeria* sp.

*Cocos nucifera* (coconut palm)  
*Colocasia esculenta* (taro)  
*Hedychium coronarium* (white ginger)  
*Heliconia psittacorum* (parrot flower)  
*Hibiscus rosa-sinensis* (Hawaiian hibiscus)  
*Musa* hybrid (edible banana)  
*Pritchardia pacifica* (Fiji Island fan palm)  
*Spathoglottis plicata* (Philippine orchid)  
*Syngonium podophyllum* (nephthytis)

***Leptosphaerulina*** McAlpine [Loculoascomycetes, Dothideales]

*Leptosphaerulina trifolii* (Rostr.) Petr. (**Plates 11, 12**)  
*Colocasia esculenta* (taro)  
*Vigna unguiculata* (yard-long bean)  
*Leptosphaerulina* sp.  
*Brassica chinensis* var. *chinensis* (Chinese cabbage)

***Lophodermium*** Chev. [Discomycetes, Rhytismatales]

*Lophodermium* sp.  
*Diffenbachia* sp. (dumbcane)  
*Mangifera indica* (mango)

***Macrophoma*** (Sacc.) Berl. & Voglino [Coelomycetes]

*Macrophoma* sp.  
*Alocasia macrorrhiza* (giant taro)

***Marssonina*** J.C. Fisch. [Coelomycetes]

*Marssonina rosae* (Lib.) Died.  
*Rosa chinensis* (rose)

***Marasmiellus*** Murrill [Basidiomycetes, Agaricales]

*Marasmiellus semiustus* (Berk. & M.A. Curtis) Singer  
*Musa* hybrid (edible banana)  
*Marasmiellus stenophyllus* (Mont.) Singer  
*Colocasia esculenta* (taro)  
*Marasmiellus* sp.  
*Mikania micrantha* (mile-a-minute vine)

***Meloidogyne*** Goeldi, 1892 [Heteroderidae, Meloidogyninae]

*Meloidogyne incognita* (Kofoid & White, 1919) Chitwood, 1949  
*Lycopersicon esculentum* (tomato) (**Plates 20, 21**)  
*Musa* hybrid (dessert banana)  
*Meloidogyne* sp.  
*Citrus* sp. (citrus)  
*Cucumis sativus* (cucumber)  
*Tarenna sambucina* (ma'anunu)

***Mycosphaerella*** Johans. [Loculoascomycetes, Dothideales]

*Mycosphaerella alocasiae* H. & P. Sydow  
*Alocasia macrorrhiza* (giant taro) (Plates 1, 2)  
*Mycosphaerella fijiensis* Morlet

- Musa* hybrid (edible banana) (**Plates 27, 28**)
- Mycosphaerella henningsii* Sivanesan  
*Manihot esculenta* (tapioca)
- Mycosphaerella heydichii* F. Stevens & P.A. Young in F. Stevens  
*Hedychium coronarium* (white ginger)
- Mycosphaerella rosicola* B.H. Davis ex Deighton  
*Rosa chinensis* (rose)
- Mycosphaerella* sp.  
*Canna indica* (canna lily)  
*Cocos nucifera* (coconut palm)  
*Coix lacryma-jobi* (sanasana)  
*Crinum asiaticum* (crinum lily)  
*Ficus elastica* (rubber plant)  
*Heliconia humilis* (lobster claw)  
*Rosa chinensis* (rose)  
*Sanchezia* sp. (none known)  
*Spondias dulcis* (vi apple)
- Nectria** (Fr.) Fr. [Pyrenomycetes, Hypocreales]  
*Nectria haematacocca* Berk. & Broom  
*Lansium domesticum* (langsats)
- Oidium** Link, nom. cons. [Hyphomycetes]  
*Oidium* sp.  
*Cucumis sativus* (cucumber)  
*Lagerstroemia indica* (crape-myrtle)  
*Vigna unguiculata* (yard-long bean)
- Paracercospora** Deighton [Hyphomycetes]  
*Paracercospora fijiensis* (Morlet) Deighton  
*Musa* hybrid (edible banana)
- Pestalosphaeria** Barr. [Pyrenomycetes]  
*Pestalosphaeria* sp.  
*Veitchia merrillii* (Manila palm)
- Pestalotiopsis** Steyaert [Coelomycetes]  
*Pestalotiopsis mangiferae* (Henn.) Steyaert  
*Mangifera indica* (mango)  
*Pestalotiopsis palmarum* (Cooke) Steyaert  
*Cocos nucifera* (coconut palm)  
*Pandanus whitmearianus* (pandanus)  
*Pritchardia pacifica* (Fiji Island fan palm)  
*Veitchia merrillii* (Manila palm)  
*Pestalotiopsis* sp.  
*Alocasia macrorrhiza* (giant taro)  
*Bischofia javanica* ('o'a)  
*Carissa grandiflora* (natal plum)  
*Cordyline terminalis* (ti)  
*Dendrolobium umbellatum* (lala)  
*Faradaya amicornum* (mamalupe)

*Hedychium coronarium* (white ginger)  
*Hibiscus tiliaceus* (beach hibiscus)  
*Lycopersicon esculentum* (tomato)  
*Manilkara zapote* (sapote)  
*Nicolaia elatior* (torch ginger)  
*Planchonella torricellensis* (mamalava)

***Pestalozziella*** Sacc. & Ellis in Sacc. [Coelomycetes]

*Pestalozziella* sp.

*Pandanus whitmeeanus* (pandanus)

***Phellinus*** Quel. [Basidiomycetes, Aphyllophorales]

*Phellinus noxius* (Corner) G.H. Cunningham

*Adenantha pavonina* (lopa)  
*Artocarpus altilis* (breadfruit)  
*Barringtonia asiatica* (futu)  
*Barringtonia samoensis* (faiaga)  
*Calophyllum neo-ebudicum* (tamanu)  
*Cananga odorata* (moso'oi)  
*Canarium harveyi* (mafoa)  
*Cerbera manghas* (lava)  
*Cieba pentandra* (kapok)  
*Citrus* sp. (citrus)  
*Cordia aspera* (tou)  
*Crossostylis biflora* (saitamu)  
*Diospyros samoensis* (au'auli)  
*Dysoxylum samoense* (tufaso)  
*Elattostachys falcata* (taputo'i)  
*Ficus obliqua* (banyan)  
*Ficus tinctoria* (dyer's fig)  
*Fluggea flexuosa* (poumuli)  
*Glochidion ramiflorum* (masame)  
*Hernandia nymphaeifolia* (pu'a)  
*Hibiscus rosa-sinensis* (Hawaiian hibiscus)  
*Hibiscus tiliaceus* (beach hibiscus) (**Plate 18**)  
*Inocarpus fagifer* (ifi)  
*Intsia bijuga* (ifilele) (**Plate 19**)  
*Macaranga harveyana* (lau pata)  
*Macaranga stipulosa* (lau fatu)  
*Morinda citrifolia* (nonu)  
*Myristica fatua* (Samoan nutmeg)  
*Neonauclea forsteri* (afa)  
*Pipturus argenteus* (soga)  
*Planchonella grayana* ('ala'a)  
*Planchonella samoensis* (mamalava)  
*Pometia pinnata* (tava)  
*Rhus taitensis* (tavai)  
*Samanea saman* (monkey-pod tree)  
*Spondias dulcis* (vi apple)  
*Syzygium inophylloides* (asi)  
*Terminalia richii* (malili)



**Phoma** Sacc., nom. cons. [Coelomycetes]

*Phoma cucurbitacearum* (Fr.:Fr.) Sacc.

*Cucumis sativus* (cucumber)

*Phoma erythrinicola* Tracy & Earle

*Erythrina subumbrans* (coral tree)

*Phoma* sp.

*Alocasia macrorrhiza* (giant taro)

*Cocos nucifera* (coconut palm)

*Colocasia esculenta* (taro)

*Cordyline terminalis* (ti)

*Erythrina variegata* (coral tree)

*Euphorbia pulcherrima* (poinsettia)

*Hedychium coronarium* (white ginger)

*Hibiscus rosa-sinensis* (Hawaiian hibiscus)

*Rhus taitensis* (tavai)

*Solanum melongena* (aubergine)

**Phomopsis** (Sacc.) Bubak [Coelomycetes]

*Phomopsis citri* H. Fawc. non (Sacc.) Traverso & Spessa, hom. illeg.

*Citrus* sp. (citrus)

*Phomopsis* sp.

*Cocos nucifera* (coconut palm)

*Euphorbia pulcherrima* (poinsettia)

**Phyllachora** Nitschke ex Fuckel, nom. cons. [Pyrenomycetes, Phyllachorales]

*Phyllachora afzeliae* Sydow

*Intsia bijuga* (ifilele)

*Phyllachora musicola* Booth & Shaw

*Musa* hybrid (edible banana) (**Plate 29**)

*Phyllachora* sp.

*Ficus scabra* (mati'ata)

*Ficus tinctoria* (dyer's fig)

*Hibiscus tiliaceus* (beach hibiscus)

*Metroxylon vitiense* (sago palm)

**Phyllosticta** Pers., nom. cons. [Coelomycetes]

*Phyllosticta artocarpi* Speg.

*Artocarpus altilis* (breadfruit)

*Phyllosticta cordyline* (Thuem.) Petrak & H. Sydow

*Cordyline terminalis* (ti)

*Phyllosticta musarum* (Cooke) van der Aa

*Musa* hybrid (edible banana)

*Phyllosticta* sp.

*Caladium x hortulanum* (caladium)

*Cocos nucifera* (coconut palm)

*Cordyline terminalis* (ti)

*Cuphea melvilla* (firecracker plant)

*Hibiscus rosa-chinensis* (Hawaiian hibiscus)

*Spathoglottis plicata* (Philippine orchid)

*Syngonium podophyllum* (nephthytis)

*Veitchia merrillii* (Manila palm)

**Physalospora** Niessl [Pyrenomycetes, Amphisphaeriales]

*Physalospora rhodina* Berkley & Curtis in Cooke

*Artocarpus altilis* (breadfruit)

*Physalospora* sp.

*Heliconia humilis* (lobster claw)

*Philodendron* sp. (heart-leaf philodendron)

*Theobroma cacao* (cacao)

**Physopella** Arth. [Basidiomycetes, Uredinales]

*Physopella* sp.

*Paspalum conjugatum* (sourgrass)

**Phytophthora** de Bary [Oomycetes, Peronosporales]

*Phytophthora colocasiae* Racib.

*Alocasia macrorrhiza* (giant taro)

*Colocasia esculenta* (taro) (**Plates 13, 14**)

*Phytophthora parasitica* Dastur (*P. nicotianae* Breda de Haan var. *parasitica* (Dastur) G.M. Waterhouse)

*Capsicum annuum* (sweet or hot pepper)

**Pseudocercospora** Speg. [Hyphomycetes]

*Pseudocercospora cruenta* (Sacc.) Deighton

*Vigna unguiculata* subsp. *sesquipedalis* (yard-long bean)

*Pseudocercospora subsessilis* (Syd. & P. Syd.) Deighton

*Dysoxylum samoense* (tufaso)

**Pseudomonas** Migula, 1894 [Pseudomonadaceae]

*Pseudomonas solanacearum* race 1 (Smith 1896) D.F. Smith, 1914

*Lycopersicon esculentum* (tomato)

**Puccinia** Pers.:Pers. [Basidiomycetes, Uredinales]

*Puccinia canaliculata* (Schwein.) Lagerh.

*Cyperus rotundus* (purple nut sedge)

*Puccinia oahuensis* Ellis & Everh.

*Digitaria setigera* (crab grass)

*Puccinia* sp.

*Canna indica* (canna lily)

**Pythium** Pringsh., nom. cons. [Oomycetes, Peronosporales]

*Pythium aphanidermatum* (Edson) Fitzp.

*Colocasia esculenta* (taro)

*Cucumis sativus* (cucumber)

*Zea mays* (corn, maize) (**Plate 16**)

*Pythium* sp.

*Brassica chinensis* var. *chinensis* (Chinese cabbage)

*Colocasia esculenta* (taro)

*Cucumis sativus* (cucumber) (**Plate 15**)

**Radopholus** Thorne, 1949 [Pratylenchidae, Pratylenchinae]

*Radopholus similis* (Cobb, 1893) Thorne, 1949  
*Musa* hybrid (edible banana)

**Rhizoctonia** DC. [Agonomycetes]  
*Rhizoctonia solani* Kuhn  
*Cucumis sativus* (cucumber)

**Rhizopus** Ehrenb. [Zygomycetes, Mucorales]  
*Rhizopus stolonifer* (Ehrenb.:Fr.) Vuill.  
*Capsicum annuum* (sweet or hot pepper)  
*Solanum melongena* (aubergine)

**Rhynchosphaeria** (Sacc.) Berl. [Pyrenomycetes, Sphaeriales]  
*Rhynchosphaeria* sp.  
*Planchonella torricellensis* (mamalava)

**Sclerotinia** Fuckel, nom. cons. [Discomycetes, Helotiales]  
*Sclerotinia sclerotiorum* (Lib.) de Bary  
*Lycopersicon esculentum* (tomato)

**Septoria** Sacc., nom. cons. [Coelomycetes]  
*Septoria* sp.  
*Cocos nucifera* (coconut palm)  
*Colocasia esculenta* (taro)  
*Heliconia psittacorum* (parrot flower)

**Sphaceloma** de Bary [Coelomycetes]  
*Sphaceloma fawcettii* var. *scabiosa* (McAlp. & Tryon) Jenkins  
*Citrus* sp. (citrus)  
*Sphaceloma poinsettiae* Jenk. & Ruehle  
*Euphorbia pulcherrima* (poinsettia)

**Sphaerellopsis** Cooke [Coelomycetes]  
*Sphaerellopsis filum* (Biv.-Bern. ex Fr.) Sutton  
*Puccinia canaliculata* (rust on nut sedge and canna) (**Plate 17**)  
*Uromyces appendiculatus* (rust on yard-long bean)  
Note: *Sphaerellopsis* is a mycoparasite of rust fungi.

**Sphaerulina** Sacc. [Loculoascomycetes, Dothideales]  
*Sphaerulina* sp.  
*Fagraea berteriana* (pualulu)

**Stigmina** Sacc. [Hyphomycetes]  
*Stigmina mangiferae* (Koorders) M.B. Ellis  
*Mangifera indica* (mango) (**Plate 23**)

**Synchytrium** de Bary & Woronin.  
*Synchytrium minutum* (Pat.) Gaumann  
*Pueraria lobata* (kudzu)

***Uredo*** Pers.:Pers. [Basidiomycetes, Uredinales]

*Uredo musae* Cummins

*Musa* hybrid

*Uredo pseudocannae* Cummings

*Canna indica* (canna lily)

***Uromyces*** (Link) Unger, nom. cons. [Basidiomycetes, Uredinales]

*Uromyces appendiculatus* (Pers.:Pers.) Unger

*Vigna unguiculata* subsp. *sesquipedalis* (yard-long bean)

*Uromyces bidenticola* Arth.

*Bidens alba* (beggar's tick)

*Uromyces* sp.

*Vigna unguiculata* (yard-long bean)

***Xanthomonas*** Dowson, 1939 [Pseudomonadaceae]

*Xanthomonas campestris* pv. *vesicatoria* (Doidge) Dye

*Lycopersicon esculentum* (tomato)

## FUNGUS PATHOGENS ON INSECTS

***Aspergillus*** P. Mich. ex Link:Fr. [Hyphomycetes]

*Aspergillus* sp.

*Aphis gossypii* (green peach aphid) (ASLG 108P)

*Bactrocera* spp. (fruit flies) (ASLG 315P)

*Rodolia limbata* (lady beetle) (ASLG 100P)

***Cladosporium*** Link:Fr. [Hyphomycetes]

*Cladosporium* sp.

*Aphis gossypii* (on dead aphids) (ASLG 109P)

***Fusarium*** Link:Fr. [Hyphomycetes]

*Fusarium* sp.

*Rodolia limbata* (lady beetle) (ASLG 117P)

*Tarophagus proserpina* (taro planthopper)

***Metarhizium*** (Metchnikoff) Sorokin [Hyphomycetes]

*Metarhizium anisopliae* var. *anisopliae* (Metsch.) Sorokin

*Aphis gossypii* (green peach aphid)

*Cicada* sp. (cicada) (ASLG 204P) (**Plate 34**)

*Metarhizium anisopliae* var. *majus* (Metsch.) Sorokin

*Oryctes rhinoceros* (rhinoceros beetle) (ASLG 227P) (**Plate 35**)

***Paecilomyces*** Bainier [Hyphomycetes]

*Paecilomyces fumosoroseus* (Wize) AHS Brown & G. Smith

*Bemisia tabaci* biotype B (silverleaf whitefly) (ASLG 112P)

*Icerya seychellarum* (Seychelles fluted scale) (ASLG 118P)

***Trichoderma*** Pers.:Fr. [Hyphomycetes]

*Trichoderma viride* Pers.:Fr.

*Aphis gossypii* (green peach aphid) (ASLG 182P)

***Trichothecium*** Link:Fr. [Hyphomycetes]

*Trichothecium* sp.

*Icerya seychellarum* (Seychelles fluted scale) (ASLG 068P)

***Verticillium*** Nees [Hyphomycetes]

*Verticillium lecanii* (A. Zimmerm.) Viegas

*Aphis gossypii* (green peach aphid) (ASLG 182P) (**Plate 36**)

*Thrips palmi* (palm thrips)

## ENGLISH AND SAMOAN PLANT NAMES, BOTANICAL EQUIVALENTS

'atone	<i>Myristica fatua</i>	giant taro	<i>Alocasia macrorrhiza</i>
aubergine	<i>Solanum melongena</i>	green bean	<i>Phaseolus vulgaris</i>
'aute	<i>Hibiscus rosa-sinensis</i>	heart-leaf philodendron	<i>Philodendron</i> sp.
'avoca	<i>Persea americana</i>	hibiscus	<i>Hibiscus rosa-sinensis</i>
banana	<i>Musa</i> cultivars, hybrids	hot pepper	<i>Capsicum annuum</i>
beach hibiscus	<i>Hibiscus tiliaceus</i>	ifilele	<i>Intsia bijuga</i>
beach morning-glory	<i>Ipomoea pes-caprae</i>	iris	<i>Iris</i> sp.
beggar's-tick	<i>Bidens alba</i>	israeli	<i>Solanum melongena</i>
bell pepper	<i>Capsicum annuum</i>	kapisi	<i>Brassica chinensis</i>
bitter gourd	<i>Momordica charantia</i>	kapok	<i>Cieba pentandra</i>
bitter yam	<i>Dioscorea bulbifera</i>	kava	<i>Piper methysticum</i>
black nightshade	<i>Solanum nigrum</i>	koko	<i>Theobroma cacao</i>
bougainvillea	<i>Bougainvillea spectabilis</i>	kudzu	<i>Pueraria lobata</i>
breadfruit	<i>Artocarpus altilis</i>	kukama	<i>Cucumis sativus</i>
cacao	<i>Theobroma cacao</i>	lady-of-the-night	<i>Brunfelsia americana</i>
caladium	<i>Cladium x hortulanum</i>	lala	<i>Dendrolobium umbellatum</i>
canna lily	<i>Canna indica</i>	langsat	<i>Lansium domesticum</i>
Canterbury bells	<i>Gloxinia perennis</i>	lau fala	<i>Pandanus whitmeeanus</i>
Chinese cabbage	<i>Brassica chinensis</i>	lau pata	<i>Macaranga harveyana</i>
Chinese taro	<i>Alocasia cucullata</i>	lau talotalo	<i>Crinum asiaticum</i>
citrus	<i>Citrus</i> spp.	lime	<i>Citrus aurantifolia</i>
coconut palm	<i>Cocos nucifera</i>	lipstick-tree	<i>Bixa orellana</i>
coral tree	<i>Erythrina variegata</i>	loa	<i>Bixa orellana</i>
corn	<i>Zea mays</i>	lobster claw	<i>Heliconia</i> sp.
crab grass	<i>Digitaria setigera</i>	ma'anunu	<i>Tarenna sambucina</i>
rape-myrtle	<i>Lagerstroemia indica</i>	mafoa	<i>Canarium harveyi</i>
crinum lily	<i>Crinum asiaticum</i>	magalo	<i>Solanum nigrum</i>
croton	<i>Codiaeum variegatum</i>	mago	<i>Mangifera indica</i>
cucumber	<i>Cucumis sativus</i>	mamalava	<i>Planchonella torricellensis</i>
dumbcane	<i>Diffenbachia</i> sp.	mamalupe	<i>Faradaya amicorum</i>
dyer's fig	<i>Ficus tinctoria</i>	mango	<i>Mangifera indica</i>
edible hibiscus	<i>Hibiscus manihot</i>	Manila palm	<i>Veitchia merrillii</i>
eggplant	<i>Solanum melongena</i>	manioka	<i>Manihot esculenta</i>
esi	<i>Carica papaya</i>	mati	<i>Ficus tinctoria</i>
fagamanu	<i>canna indica</i>	mile-a-minute vine	<i>Mikania micrantha</i>
fa'i	<i>Musa</i> cultivars, hybrids	moli	<i>Citrus</i> spp.
fasa	<i>Pandanus whitmeeanus</i>	moon flower	<i>Ipomoea alba</i>
fau	<i>Hibiscus tiliaceus</i>	moso'oi	<i>Cananga odorata</i>
Fiji Island fan palm	<i>Pritchardia pacifica</i>	mumuta	<i>Cyperus rotundus</i>
firecracker plant	<i>Cuphea melvilla</i>	natal plum	<i>Carissa grandiflora</i>
frangipani	<i>Plumeria</i> spp.	nephthytis	<i>Syngonium podophyllum</i>
French bean	<i>Phaseolus vulgaris</i>	niu	<i>Cocos nucifera</i>
fue kula	<i>Ipomoea pes-caprae</i>	niu o lotuma	<i>Metroxylon vitiense</i>
fue lauteletele	<i>Merremia umbellata</i>	niu piu	<i>Pritchardia pacifica</i>
fue mola	<i>Ipomoea pes-caprae</i>	nonu	<i>Morinda citrifolia</i>
fue saina	<i>Mikania micrantha</i>	nutmeg, Samoan	<i>Myristica fatua</i>
fue sina	<i>Ipomoea alba</i>	'o'a	<i>Bischofia javanica</i>
gatae	<i>Erythrina variegata</i>	pak-choi	<i>Brassica chinensis</i>
gatae palagi	<i>Erythrina subumbrans</i>	panax	<i>Polyscias scutellaria</i>
geranium-leaf aralia	<i>Polyscias guilfoylei</i>	paogo	<i>Pandanus whitmeeanus</i>

papaya	<i>Carica papaya</i>
paper-mulberry	<i>Broussonetia papyrifera</i>
parrot flower	<i>Heliconia psittacorum</i>
pata	<i>Macaranga harveyana</i>
pele	<i>Hibiscus manihot</i>
Philippine orchid	<i>Spathoglottis plicata</i>
poinsettia	<i>Euphorbia pulcherrima</i>
polo	<i>Capsicum annuum</i>
poumuli	<i>Fluggea flexuosa</i>
primrose willow	<i>Ludwigia octovalvis</i>
pua fiti	<i>Plumeria</i> sp.
pualulu	<i>Fagraea berteroaana</i>
purple nut sedge	<i>Cyperus rotundus</i>
rose	<i>Rosa chinensis</i>
rubber tree	<i>Ficus elastica</i>
sago palm	<i>Metroxylon vitiense</i>
Samoan nutmeg	<i>Myristica fatua</i>
sana	<i>Zea mays</i>
sanasana	<i>Coix lacryma-jobi</i>
sapote	<i>Manilkara zapote</i>
screwpine	<i>Pandanus whitmeeanus</i>
soi	<i>Dioscorea bulbifera</i>
sweet pepper	<i>Capsicum annuum</i>
ta'amu	<i>Alocasia macrorrhiza</i>
talie	<i>Terminalia samoensis</i>
talo	<i>Colocasia esculenta</i>
tanitani	<i>Polyscias guilfoylei</i>
tapioca	<i>Manihot esculenta</i>
taro	<i>Colocasia esculenta</i>
tava	<i>Pometia pinnata</i>
tavai	<i>Rhus taitensis</i>
teuila	<i>Hedychium coronarium</i>
ti	<i>Cordyline terminalis</i>
tipolo	<i>Citrus aurantifolia</i>
tomato	<i>Lycopersicon esculentum</i>
torch ginger	<i>Nicolaia elatior</i>
tufaso	<i>Dysoxylum samoense</i>
u'a	<i>Broussonetia papyrifera</i>
'ulu	<i>Artocarpus altilis</i>
vavae	<i>Cieba pentandra</i>
vi apple	<i>Spondias dulcis</i>
white ginger	<i>Hedychium coronarium</i>
yard-long bean	<i>Vigna unguiculata</i>

## LIST OF HOST PLANTS BY FAMILY

<b>Acanthaceae</b> <i>Pseuderanthemum</i> <i>Sanchezia</i>	<b>Burseraceae</b> <i>Canarium</i>	<b>Iridaceae</b> <i>Iris</i>	<b>Poaceae</b> <i>Coix</i> <i>Digitaria</i> <i>Paspalum</i> <i>Zea</i>
<b>Agavaceae</b> <i>Cordyline</i>	<b>Cannaceae</b> <i>Canna</i>	<b>Lauraceae</b> <i>Persea</i>	
<b>Anacardiaceae</b> <i>Mangifera</i> <i>Rhus</i> <i>Spondias</i>	<b>Caricaceae</b> <i>Carica</i>	<b>Liliaceae</b> <i>Crinum</i>	<b>Rosaceae</b> <i>Rosa</i>
<b>Annonaceae</b> <i>Cananga</i>	<b>Combretaceae</b> <i>Terminalia</i>	<b>Loganiaceae</b> <i>Fagraea</i>	<b>Rubiaceae</b> <i>Morinda</i> <i>Tarenna</i>
<b>Apocynaceae</b> <i>Carissa</i> <i>Plumeria</i>	<b>Convolvulaceae</b> <i>Ipomoea</i> <i>Merremia</i>	<b>Lythraceae</b> <i>Cuphea</i> <i>Lagerstroemia</i>	<b>Rutaceae</b> <i>Citrus</i>
<b>Araceae</b> <i>Alocasia</i> <i>Caladium</i> <i>Colocasia</i> <i>Diffenbachia</i> <i>Philodendron</i> <i>Syngonium</i>	<b>Cucurbitaceae</b> <i>Cucumis</i> <i>Momordica</i>	<b>Malvaceae</b> <i>Hibiscus</i>	<b>Sapindaceae</b> <i>Pometia</i>
<b>Araliaceae</b> <i>Polyscias</i>	<b>Cyperaceae</b> <i>Cyperus</i>	<b>Meliaceae</b> <i>Dysoxylum</i> <i>Lansium</i>	<b>Sapotaceae</b> <i>Manilkara</i> <i>Planchonella</i>
<b>Arecaceae</b> <i>Cocos</i> <i>Pritchardia</i> <i>Veitchia</i>	<b>Dioscoreaceae</b> <i>Dioscorea</i>	<b>Moraceae</b> <i>Artocarpus</i> <i>Broussonetia</i> <i>Ficus</i>	<b>Solanaceae</b> <i>Brunfelsia</i> <i>Capsicum</i> <i>Lycopersicon</i> <i>Solanum</i>
<b>Asteraceae</b> <i>Bidens</i> <i>Mikania</i>	<b>Euphorbiaceae</b> <i>Bischofia</i> <i>Codiaeum</i> <i>Euphorbia</i> <i>Fluggea</i> <i>Macaranga</i> <i>Manihot</i>	<b>Musaceae</b> <i>Musa</i>	<b>Sterculiaceae</b> <i>Theobroma</i>
<b>Bixaceae</b> <i>Bixia</i>	<b>Fabaceae</b> <i>Dendrolobium</i> <i>Erythrina</i> <i>Intsia</i> <i>Phaseolus</i> <i>Pueraria</i> <i>Vigna</i>	<b>Myristicaceae</b> <i>Myristica</i>	<b>Verbenaceae</b> <i>Faradaya</i>
<b>Brassicaceae</b> <i>Brassica</i>	<b>Gesnariaceae</b> <i>Gloxinia</i>	<b>Nyctaginaceae</b> <i>Bougainvillea</i>	<b>Zingiberaceae</b> <i>Hedychium</i> <i>Nicolaia</i>
	<b>Heliconiaceae</b> <i>Heliconia</i>	<b>Onagraceae</b> <i>Ludwigia</i>	
		<b>Orchidaceae</b> <i>Spathoglottis</i>	
		<b>Pandanaceae</b> <i>Pandanus</i>	
		<b>Piperaceae</b> <i>Piper</i>	



## PARTIAL LIST OF PATHOGENS RECORDED IN AMERICAN SAMOA

Alternaria brassicicola  
Ascochyta sp.\*\*  
Aspergillus sp.\*\*  
Asterina sp.  
Atractilina parasitica  
Banana Bunchy Top Virus\*\*  
Bipolaris micropus  
Bipolaris stenospila  
Botryodiplodia palmarum  
Botryosphaeria dothidea\*\*  
Botryosphaeria sp.\*\*  
Capnodium sp.  
Cercospora althaeina\*\*  
Cercospora bidentis  
Cercospora bixae\*\*  
Cercospora broussonetiae\*\*  
Cercospora canescens  
Cercospora capsici  
Cercospora catappae  
Cercospora citrullina  
Cercospora coffeicola  
Cercospora ipomoeae  
Cercospora melongenae  
Cercospora mikaniicola  
Cercospora polysciatis  
Cercospora pudicae  
Cercospora sorghi  
Cercospora taccae  
Cercospora yoshinagiana  
Cercospora zinniae  
Cercospora spp.  
Cercosporidium bougainvilleae\*\*  
Cercosporidium henningsii\*\*  
Chaetomella sp.\*\*  
Cintractia axicola  
Cladosporium colocasiae  
Cladosporium sp.\*\*  
Cochliobolus heterostrophus  
Cochliobolus pallescens  
Cochliobolus verruculosus  
Coleosporium plumeriae\*\*  
Colletotrichum capsici  
Colletotrichum dematium  
Colletotrichum gloeosporioides\*\*  
Colletotrichum graminicola  
Colletotrichum higginsianum  
Colletotrichum orbiculare  
Colletotrichum spp.\*\*  
Coniothyrium perottianum  
Coniothyrium sp.  
Cordana musae  
Corticium sp.  
Corynespora cassiicola  
Cucumber Mosaic Cucumovirus\*\*  
Curvularia spp\*\*  
Dactylaria sp.  
Dasheen Mosaic Virus\*\*  
Dendrophoma sp.\*\*  
Diaporthe citri  
Didymella sp.  
Diplodia fructus-pandani  
Diplodia sp.  
Distocercospora pachyderma  
Dothiorella sp.\*\*  
Elsinoe fawcettii  
Endophyllum kaernbachii  
Erwinia carotovora subsp. carotovora\*\*  
Erwinia sp.\*\*  
Erysiphe cichoracearum  
Eudarlucia caricis  
Fulvia fulva  
Fusarium oxysporum  
Fusarium pandani  
Fusarium proliferatum  
Fusarium sp.\*\*  
Fusicoccum sp.\*\*  
Ganoderma australe  
Ganoderma chalceum  
Ganoderma resinaceum\*\*  
Ganoderma sp.\*\*  
Gibberella fujikuroi  
Gibberella intricans  
Gloeocercospora sorghi  
Glomerella cingulata  
Glomerella tucumanensis  
Glomerella spp.\*\*  
Gonatabotryum sp.\*\*  
Goplana dioscoreae  
Guignardia dioscoreae  
Guignardia morindae  
Guignardia musae  
Guignardia sp.\*\*  
Haplobasidium musae  
Helicotylenchus dihystra\*  
Helicotylenchus multicinctus\*  
Hemileia vastatrix  
Hypoxyton deustum  
Hypoxyton mediterraneum

*Lasiodiplodia theobromae*\*\*  
*Leptosphaeria sacchari*  
*Leptosphaeria* sp.\*\*  
*Leptosphaerulina trifolii*\*\*  
*Lophodermium* sp.\*\*  
*Macrophoma pandani*  
*Macrophoma* sp.\*\*  
*Macroposthonia denoudeni*\*  
*Magnaporthe grisea*  
*Marasmiellus inoderma*  
*Marasmiellus semiustus*  
*Marasmiellus stenophyllus*\*\*  
*Marasmiellus* spp.\*\*  
*Marasmius* sp.  
*Meliola evodiae*  
*Meliola panici*  
*Meliolina samoensis*  
*Meloidogyne incognita*\*  
*Metarhizium anisopliae* var. *anisopliae*\*\*  
*Metarhizium anisopliae* var. *majus*\*\*  
*Mycosphaerella alocasiae*  
*Mycosphaerella cruenta*  
*Mycosphaerella fijiensis*  
*Mycosphaerella gastonis*  
*Mycosphaerella henningsii*  
*Mycosphaerella horii*  
*Mycosphaerella musicola*  
*Mycosphaerella rosicola*  
*Mycosphaerella* spp\*\*  
*Mycovellosiella koepkei*  
*Myrothecium roridum*  
*Nectria haematacocca*\*\*  
*Nectria jungneri*  
*Nectria ochroleuca*  
*Nectria rigidiuscula*  
*Nectria* sp.  
*Neojohnstonia colocasiae*  
*Oidium* sp.  
*Paecilomyces fumosoroseus*\*\*  
*Paraphaeosphaeria michotii*  
*Pellicularia koleroga*  
*Penicillium digitatum*  
*Periconiella perseae*  
*Peronospora parasitica*  
*Pestalotiopsis mangiferae*\*\*  
*Pestalotiopsis palmarum*  
*Pestalotiopsis* sp\*\*  
*Pestalozziella* sp.\*\*  
*Phanerochaeta salmonicolor*  
*Phellinus lamaensis*  
*Phellinus noxius*  
*Phoma cucurbitacearum*\*\*  
*Phoma erythrinicola*\*\*  
*Phoma fructus-pandani*  
*Phoma martellii*  
*Phoma* spp.\*\*  
*Phomopsis palmicola*  
*Phomopsis* sp.\*\*  
*Phyllachora afzeliae*  
*Phyllachora musicola*  
*Phyllachora paspalicola*  
*Phyllachora setariicola*  
*Phyllosticta artocarpi*\*\*  
*Phyllosticta cordylineae*  
*Phyllosticta musarum*  
*Phyllosticta* spp.\*\*  
*Physalospora rhodina*  
*Physalospora* sp.\*\*  
*Phytophthora colocasiae*  
*Phytophthora infestans*  
*Phytophthora nicotianae* var. *parasitica* (P. *parasitica*)  
*Phytophthora palmivora*  
*Pseudocercospora ablemoschi*  
*Pseudocercospora borrieriae*  
*Pseudocercospora colocasiae*  
*Pseudocercospora cruenta*\*\*  
*Pseudocercospora jatrophae*  
*Pseudocercospora sawadae*  
*Pseudocercospora stahliae*  
*Pseudocercospora synedrella*  
*Pseudocercospora timorensis*  
*Pseudocercospora* sp.  
*Pseudoepicoccum cocos*  
*Pseudomonas solanacearum*  
*Pseudomonas solanacearum* race 1\*\*  
*Pseudoperonospora cubensis*  
*Puccinia canaliculata*\*\*  
*Puccinia cenchri*  
*Puccinia cyperi*  
*Puccinia fimbriatylidis*  
*Puccinia kuehnii*  
*Puccinia lepturi*  
*Puccinia melanocephala*  
*Puccinia miscanthi*  
*Puccinia oahuensis*  
*Puccinia operta*  
*Puccinia polysora*  
*Pythium aphanidermatum*\*\*

Pythium sp.\*\*  
Radopholus similis\*  
Ramichloridium musae  
Ravenelia sessilis  
Rhizoctonia solani\*\*  
Rhizoctonia sp.  
Rhizopus stolonifer\*\*  
Rhynchosphaeria sp.\*\*  
Rigidoporus microporus  
Rotylenchulus reniformis\*  
Sclerotinia sclerotiorum\*\*  
Septobasidium separans  
Septoria eburnea  
Septoria sp.\*\*  
Setosphaeria monoceras  
Sphaceloma fawcettii var. scabiosa\*\*  
Sphaceloma poinsettiae\*\*  
Sphaerellopsis filum\*\*  
Stagonospora sp.  
Stemphylium solani  
Stigmina mangiferae  
Synchytrium minutum  
Thanatephorus cucumeris  
Trametes hemitephra  
Trametes menziesii  
Trametes modesta\*\*  
Trametes sp.\*\*  
Trichoderma viride\*\*  
Trichothecium sp.\*\*  
Uredo artocarp  
Uredo dioscoreae-sativae  
Uredo musae  
Uredo pseudocannae  
Uredo sp.  
Uromyces appendiculatus\*\*  
Uromyces bidenticola  
Uromyces dactyloctenii  
Uromyces setariae-italicae  
Uromyces tenuicutis  
Uromyces vignae  
Ustilago zaeae  
Verticillium lecanii\*\*  
Xanthomonas campestris pv. campestris  
Xanthomonas campestris pv. phaseoli  
Xanthomonas campestris pv. vesicatoria\*\*  
Xiphinema ensiculiferum\*

---

\* Banana nematodes from Grandison (1996)

\*\* New identifications by the author, 1999-2002

(no asterisk) Identifications from McKenzie (1996)

## AUTHORS OF PLANT AND FUNGAL NAMES

- A. DC.** — Candolle, Alphonse Louis Pierre  
Pyramus de
- A. Gray** — Gray, Asa
- A.H.S. Brown** — Brown, Agnes H.S.
- Allesch.** — Allescher, Andreas
- Arth.** — Arthur, Joseph Charles
- Auersw.** — Auerswald, Bernhard
- A. Zimmerm.** — Zimmermann, Albrecht W. Phillip
- Bainier** — Bainier, Georges
- Becc.** — Beccari, Odoardo
- Benth.** — Bentham, George
- Bergius** — Bergius, Peter Jonas
- Berk.** — Berkeley, Miles Joseph
- Berl.** — Berlese, Augusto Napoleone
- Biv.-Bern.** — Bivona-Bernardi, Antonio de
- Blume** — Blume, Carl Ludwig von
- Boedijn** — Boedijn, Karl Bernard
- Bolton** — Bolton, James
- Booth** — Booth, Colin B.
- Breda de Haan** — Breda de Haan, Jacob van
- Broome** — Broome, Christopher Edmund
- Bubak** — Bubak, Frantisek
- Cav.** — Cavanilles
- Ces.** — Cesati, Vincenzo de
- Chev.** — Chevallier, Francoise Fulgis
- Chupp** — Chupp, Charles David
- Colla** — Colla, Louigi Aloysius
- Cooke** — Cooke, Mordecai Cubitt
- Corda** — Corda, August Karl Joseph
- Corner** — Corner, Edred John Henry
- C.P. Seymour** — Seymour, C.P.
- Crantz** — Crantz, Heinrich Johann Nepomuk von
- C.T. Wei** — Wei, Ching-Chao
- Cummins** — Cummins, George Baker
- Curtis** — Curtis, William
- C. Welles** — Welles, Colin Gilchrist
- Dastur** — Dastur, Jehangir Fardunji
- DC.** — Candolle, Agustin Pyramus de
- de Bary** — Bary, Heinrich Anton de
- Deighton** — Deighton, Charles Fredrick
- De Not.** — De Notaris, Giuseppe
- Died.** — Dedicke, Hermann
- Doidge** — Doidge, Ethel Mary
- Don** — Don, George
- Druce** — Druce, George Claridge
- Durand** — Durand, Theophile Alexis
- E. Mey.** — Meyer, Ernest Heinrich Friedrich
- Earle** — Earle, Franklin Summer
- Edson** — Edson, Howard Austin
- Ehrenb.** — Ehrenberg, Christian Gotfried
- Ellis** — Ellis, Job Bicknell
- Everh.** — Everhart, Benjamin Matlack
- Fitzp.** — Fitzpatrick, Harry Morton
- F. Noack** — Noack, Fritz
- Forst. f.** — Forster, Carl Friedrich
- Fosb.** — Fosberg, Francis Raymond
- Fr.** — Fries, Elias Magnus
- Fresen.** — Fresenius, Johann Baptiste Georg  
Wolfgang
- F. Stevens** — Stevens, Frank Lincoln
- Fuckel** — Fuckel, Karl Wilhelm Gottlieb Leopold
- F.W. Schultz** — Schultz, Friedrich Wilhelm
- Gaertn.** — Gaertner, Joseph
- Gaumann** — Gaumann, Ernest Albert
- G. Cunn.** — Cunningham, Gordon Herriot
- G.M. Waterhouse** — Waterhouse, Grace Marion
- G. Preuss** — Preuss, (Carl) Gotlieb Traugott
- Griffon** — Griffon, Edouard
- G. Sm.** — Smith, George
- Guillemin** — Guillemin, Jean Baptiste Antoine
- Hall. f.** — Haller, Albrecht von
- Hassk.** — Hasskarl, Justus Carl
- Henn.** — Hennings, Paul Christoph
- H. Fawc.** — Fawcett, Howard Samuel
- Hohn.** — Hohnel, Franz Xaver Rudolf von
- Holmsk.** — Holmskjold, Theodor
- Hook.** — Hooker, Joseph Dalton
- H. & P. Syd.** — Sydow, Hans & Paul
- Horan.** — Horaninow, Paulus (Paul) Fedorowitsch
- Horne.** — Hornemann, Jens Wilken
- Houtt.** — Houttuyn, Maarten (Martin)
- H. Schrenk** — Schrenk, Hermann von
- H.T. Gussow** — Gussow, Hans Theodor
- H. Wendl.** — Wendlann, Herman
- Jacq.** — Jacquin, Nicolaus von
- J.C. Fisch.** — Fischer, Johann Carl
- J.D. Hook.** — Hooker, Joseph Dalton
- Jenk.** — Jenkins, Anna Eliza
- Johans.** — Johanson, Carl Johan
- Klotzsch** — Klotzsch, Johann Friedrich
- Koorders** — Koorders, Sijfert Hendrick
- K. Schum.** — Schumann, Karl Moritz
- Kuhn** — Kuhn, Julius Gotthelf
- Kunth** — Kunth, Karl Sigisimund
- Kuntze** — Kuntze, Carl Ernst Otto
- L.** — Linnaeus, Carl von
- Lagerh.** — Lagerheim, Nils Gustaf
- Lam** — Lam, Herman Johannes

- Lam.** — Lamarck, Jean Baptiste Antoine Pierre de Monnet de
- Lam.** — Lambert, Aylmer Bourke
- Lams.-Scrib.** — Lamson-Scribner, Frank
- Latham** — Latham, Dennis Harold
- Lev.** — Leveille, Joseph Henri
- L.H. Bailey** — Bailey, Liberty Hyde
- Lib.** — Libert, Marie-Anne
- Linder** — Linder, David Hunt
- Lindl.** — Lindley, John
- Link** — Link, Johann Heinrich Friedrich
- Loureiro** — Loureiro, Joao de
- M.A. Curtis** — Curtis, Moses Ashley
- Magnus** — Magnus, Paul Wilhelm
- Mart.** — Martius, Carl Friedrich Philipp von
- Maubl.** — Maublanc, Andre
- M.B. Ellis** — Ellis, Martin B.
- McAlpine** — McAlpine, Daniel
- Merr.** — Merrill, Elmer Drew
- Metch.** — Metchnikoff
- Miller** — Miller, Philip
- Mont.** — Montagne, Jean Pierre Françoise Camille
- Morelet** — Morelet, Michel
- Moug.** — Mougéot, Jean Baptiste
- Muell.** — Mueller, Ferdinand Jacob Heinrich von
- Muntanola** — Muntanola, Maria
- Murrill** — Murrill, William Alfonso
- Nees** — Nees von Esenbeck, Christian Gottfried Daniel
- Niessl** — Niessl von Mayendorf, Gustav
- Nitschke** — Nitschke, Theodor Rudolf Joseph
- Park.** — Parkinson, Charles Edward
- Pat.** — Patouillard, Narcisse Theophile
- Pavon** — Pavon, Jose Antonio
- P.A. Young** — Young, Paul Allen
- Penz.** — Penzig, Albert Julius Otto
- Pers.** — Persoon, Christiaan Hendrick
- Petr., Petrak** — Petrak, Franz
- P. Mich.** — Micheli, Pier' Antonio
- Prain** — Prain, David
- Pringsh.** — Pringsheim, Nathanael
- Quel.** — Quelet, Lucien
- Racib.** — Raciborski, Marjan
- Radlk.** — Radlkofer, Ludwig Adolph Timotheus
- Ravaz** — Ravaz, Louis Etienne
- Raven** — Raven, Peter Hamilton
- R. Br.** — Brown, Robert
- Rech.** — Rechingen, Karl
- Rehm** — Rehm, Heinrich (Simon Ludwig Friedrich Felix)
- Retz.** — Retzius, Anders Jahan
- Roem.** — Roemer, Max Joseph
- Rostr.** — Rostrup, (Frederick Georg) Emil
- Roxb.** — Roxburgh, William
- Ruehle** — Ruehle, George Dewey
- Ruiz** — Ruiz Lopez, Hipolito
- Sacc.** — Saccardo, Pier Andrea
- Sawada** — Sawada, Kaneyoshi
- Schlechtend.** — Schlechtendahl, Diedrich Franz Leonhard von
- Schott** — Schott, Heinrich Wilhelm
- Schwein.** — Schweinfurth, Georg August
- Schwein.** — Schweinitz, Lewis David von
- Singer** — Singer, Rolf
- Sivanesan** — Sivanesan, A.
- Sobers** — Sobers, Edward K.
- Sorokin** — Sorokin, Nikolai Vasilevich
- Spauld.** — Spaulding, Perley
- Speg.** — Spegazzini, Carlo Luigi
- Spessa** — Spessa, Caroline
- Steyaert** — Steyaert, Rene
- Sturm** — Sturm, Jacob
- Sutton** — Sutton, Brian C.
- Swingle** — Swingle, Walter Tennyson
- Thoms.** — Thomson, Thomas
- Thuem.** — Thumen, Felix Karl Albert Ernst Joachim von
- Tracy** — Tracy, Samuel Mills
- Traverso** — Traverso, Giovanni Battista
- Unger** — Unger, Franz Joseph Andreas Nicolaus
- van der Aa** — van der Aa, H.A.
- Venten.** — Ventenat, Etienne Pierre
- Verdc.** — Verdcourt, Bernard
- Viala** — Viala, Pierre
- Viegas** — Viegas, Ahmes Pinto
- Voglino** — Voglino, Pietro
- Vuill.** — Vuillemin, Jean Paul
- Walp.** — Walpers, Wilhelm Gerhard
- W. Bull** — Bull, William
- Willd.** — Willdenow, Carl Ludwig von
- Woronin** — Woronin, Michael, Stepanovich

## BIBLIOGRAPHY

- Arauz LF. 2000. Mango anthracnose: Economic impact and current options for integrated management. *Plant Disease* 84(6): 600-611.
- Barbetti MJ. 1991. Effects of temperature and humidity on diseases caused by *Phoma medicaginis* and *Leptosphaerulina trifolii* in lucerne (*Medicago sativa*). *Plant Pathology* 40: 296-301.
- Barnett HL, Hunter BB. 1998. Illustrated genera of imperfect fungi, 4<sup>th</sup> ed. St. Paul, MN: APS Press.
- Barr ME. 1970. Some amerosporous Ascomycetes on Ericaceae and Empetraceae. *Mycologia* 62(2): 377-394.
- Barr ME. 1976. *Buergenerula* and the Physosporiaceae. *Mycologia* 68(3): 611-621.
- Barreto RW, Evans HC. 1995. Mycobiota of the weed *Cyperus rotundus* in the state of Rio de Janeiro, with an elucidation of its associated *Puccinia* complex. *Mycological Research* 99(4): 407-419.
- Booth C, Pirozynski KA. 1967. *Leptosphaerulina trifolii*. CMI descriptions of pathogenic fungi and bacteria, No. 146. Kew, Surrey: Commonwealth Mycological Institute.
- Borah RK, Dutta D, Hazarika P. 1998. Three new *Phyllachora* leaf spots from Assam. *Indian Journal of Forestry* 21(3): 256-258.
- Brady BLK. 1979a. *Metarhizium anisopliae*. CMI descriptions of pathogenic fungi and bacteria, No. 609. Kew, Surrey: Commonwealth Mycological Institute.
- Brady BLK. 1979b. *Verticillium lecanii*. CMI descriptions of pathogenic fungi and bacteria, No. 610. Kew, Surrey: Commonwealth Mycological Institute.
- Brooks FE. 1999. Incidence and distribution of Banana Bunchy Top Virus in American Samoa. *Journal of South Pacific Agriculture* 6(1): 25-28.
- Brooks FE. 2002. Brown root rot disease in American Samoa's tropical rain forests. *Pacific Science* 56(4). (in press)
- Brown AHS, Smith G. 1957. The genus *Paecilomyces* Bainier and its perfect stage *Byssochlamys* Westling. *Transactions of the British Mycological Society* 40(1): 17-89.
- Callaway MB, Phatak SC, Wells HD. 1985. Studies on alternate hosts of the rust *Puccinia canaliculata*, a potential biological control agent for nutsedges. *Plant Disease* 69: 924-926.
- Chang TT. 1995. Decline of nine tree species associated with brown root rot caused by *Phellinus noxius* in Taiwan. *Plant Disease* 79: 962-965.
- Chang TT, Yang WW. 1997. *Phellinus noxius* in Taiwan: distribution, host plants and the pH and texture of the rhizosphere soils of infected hosts. Paper No. 92. Taipei, Taiwan: Taiwan Forestry Research Institute.
- Chase AR, Broschat TK, editors. 1991. Diseases and disorders of ornamental palms. St. Paul, MN: APS Press.

- Cummins GB, Hiratsuka Y. 1996. Illustrated genera of rust fungi. St. Paul, MN: APS Press.
- Deighton FC. 1967. Studies on *Cercospora* and allied genera. II. Mycological Papers, No. 112. Kew, Surrey: Commonwealth Mycological Institute.
- Deighton FC. 1985. Some species of *Nodulisporium*. Transactions of the British Mycological Society 85(3): 391-395.
- Department of Commerce (Statistics Division). 1996. American Samoa statistical yearbook. Pago Pago, AS: American Samoa Government.
- Dumbleton LJ. 1954. A list of plant diseases recorded in South Pacific Territories, Technical Paper 78. Noumea, New Caledonia: South Pacific Commission.
- Ellett CW. 1989. *Curvularia* blight of *Ophioglossum vulgatum*. Mycologia 81(5): 815-817.
- Ellis MB. 1971. Dematiaceous Hyphomycetes. Kew, Surrey: Commonwealth Mycological Institute.
- Ellis MB. 1976. More dematiaceous Hyphomycetes. Kew, Surrey: Commonwealth Mycological Institute.
- Ellis MB, Holliday P. 1972. *Cordana musae*. CMI descriptions of pathogenic fungi and bacteria, No. 350. Kew, Surrey: Commonwealth Mycological Institute.
- Erwin DC, Ribeiro OK. 1996. *Phytophthora* diseases worldwide. St. Paul, MN: APS Press.
- Farr DF, Bills GF, Chamuris GP, Rossman AY. 1989. Fungi on plants and plant products in the United States. St. Paul, MN: APS Press.
- Fidalgo O. 1968. *Phellinus pachyphloeus* and its allies. Memoirs of the New York Botanical Garden 17(2): 109-147.
- Firman ID. 1975. Plant diseases in the area of the South Pacific Commission: 2. American Samoa. Noumea, New Caledonia: South Pacific Commission.
- Gardner DE. 1994. The native rust fungi of Hawaii. Canadian Journal of Botany 72(7): 976-989.
- Graf AB. 1992. Tropica, 4<sup>th</sup> ed. East Rutherford, NJ: Roehrs Company.
- Graham JH, Luttrell ES. 1961. Species of *Leptosphaerulina* on forage plants. Phytopathology 51: 680-693.
- Grandison GS. 1996. Plant-parasitic nematodes of American Samoa, Technical Paper No. 205. Noumea, New Caledonia: South Pacific Commission.
- Hall R. 1991. Compendium of bean diseases. St. Paul, MN: APS Press.
- Hanlin RT. 1990. Illustrated genera of Ascomycetes, Vol. I. St. Paul, MN: APS Press.
- Hanlin RT. 1998a. Illustrated genera of Ascomycetes, Vol. II. St. Paul, MN: APS Press.

- Hanlin RT. 1998b. Combined keys to illustrated genera of Ascomycetes: Vols. I & II. St. Paul, MN: APS Press.
- Hawksworth DL, Kirk PM, Sutton BC, Pegler DN. 1995. Ainsworth & Bisby's dictionary of the fungi, 8<sup>th</sup> ed. Wallingford, UK: CAB International.
- Huang S, Liu X. 1995. Control of postharvest stem end rot of mango. *Tropical Science* 35: 321-326.
- Index of Botanists. 2001. Harvard University Herbaria. Published on the Internet, [http://www.huh.harvard.edu/database/cms/botanists\\_index.html](http://www.huh.harvard.edu/database/cms/botanists_index.html) (accessed 12 August 2002).
- Irwin JAG, Davis RD. 1985. Taxonomy of some *Leptosphaerulina* spp. on legumes in Eastern Australia. *Australian Journal of Botany* 33: 233-237.
- Jones JB, Jones JP, Stall RE, Zitter TA, editors. 1991. Compendium of tomato diseases. St. Paul, MN: APS Press.
- Keener PD. 1934. Biological specialization in *Darluca filum*. *Bulletin of the Torrey Botanical Club* 61(9): 475-491.
- Khalil SK, Taborsky V. 1982. The effect of different media on the growth and sporulation of the entomopathogenic fungus *Verticillium lecanii* (Zimm.) Viegas. *Agricultura Tropica et Subtropica, Universitas Agriculturae, Praga*: 251-261.
- Kohler F, Pellegrin F, Jackson G, McKenzie E. 1997. Diseases of cultivated crops in Pacific island countries. Noumea, New Caledonia: South Pacific Commission.
- Lee SS, Zakaria M. 1993. Fungi associated with heart rot of *Acacia mangium* in Peninsular Malaysia. *Journal of Tropical Forest Science* 5(4): 479-484.
- Leung HYM, Goh TK, Hyde KD. 1997. *Cercospora mikaniacola*. IMI descriptions of fungi and bacteria No. 1311. Egham, Surrey: International Mycological Institute.
- Luc M, Sikora RA, Bridge J, editors. 1990. Plant parasitic nematodes in subtropical and tropical agriculture. Wallingford, UK: Commonwealth Agricultural Bureaux International.
- Magee CJ. 1967. The control of banana bunchy top, Technical Paper No. 150. Noumea, New Caledonia: South Pacific Commission.
- Mai WF, Mullin PG. 1996. Plant-parasitic nematodes: A pictorial key to genera, 5<sup>th</sup> ed. Ithaca, NY: Cornell University Press.
- McKenzie EHC. 1996. Fungi, bacteria and pathogenic algae on plants in American Samoa, Technical Paper No. 206. Noumea, New Caledonia: South Pacific Commission.
- McKenzie EHC, Jackson GVH. 1990. The fungi, bacteria and pathogenic algae of the Federated States of Micronesia. Noumea, New Caledonia: South Pacific Commission.
- Mordue JEM. 1971. *Glomerella cingulata*. CMI descriptions of pathogenic fungi and bacteria, No. 315. Kew, Surrey: Commonwealth Mycological Institute.



- Mordue JEM. 1980. *Pestalotiopsis mangiferae*. CMI descriptions of pathogenic fungi and bacteria, No. 676. Kew, Surrey: Commonwealth Mycological Institute.
- Mordue JEM, Holliday P. 1971. *Pestalotiopsis palmarum*. CMI descriptions of pathogenic fungi and bacteria, No. 319. Kew, Surrey: Commonwealth Mycological Institute.
- Mulder JL, Holliday P. 1974a. *Mycosphaerella fijiensis*. CMI descriptions of pathogenic fungi and bacteria, No. 413. Kew, Surrey: Commonwealth Mycological Institute.
- Mulder JL, Holliday P. 1974b. *Mycosphaerella musicola*. CMI descriptions of pathogenic fungi and bacteria, No. 414. Kew, Surrey: Commonwealth Mycological Institute.
- Nandris D, Nicole M, Geiger JP. 1987. Root rot disease of rubber trees. *Plant Disease* 71(4): 298-306.
- Olanya OM, Campbell CL. 1990. Isolate characteristics and epidemic components of *Leptosphaerulina* leaf spots on alfalfa and white clover. *Phytopathology* 80: 1278-1282.
- Onions AHS. 1979a. *Paecilomyces farinosus*. CMI descriptions of pathogenic fungi and bacteria, No. 613. Kew, Surrey: Commonwealth Mycological Institute.
- Onions AHS. 1979b. *Paecilomyces fumosoroseus*. CMI descriptions of pathogenic fungi and bacteria, No. 614. Kew, Surrey: Commonwealth Mycological Institute.
- Onions AHS. and Barron, G.L. 1967. Monophialidic species of *Paecilomyces*. *Mycological Papers*, No. 107. Kew, Surrey: Commonwealth Mycological Institute.
- Pegler DN, Waterston JM. 1968a. *Phellinus noxius*. CMI descriptions of pathogenic fungi and bacteria, No. 195. Kew, Surrey: Commonwealth Mycological Institute.
- Pegler DN, Waterston JM. 1968b. *Rigidoporus zonalis*. CMI descriptions of pathogenic fungi and bacteria, No. 200. Kew, Surrey: Commonwealth Mycological Institute.
- Ploetz RC, Zentmyer GA, Nishijima WT, Rohrbach,KG, Ohr HD, editors. 1994. Compendium of tropical fruit diseases. St. Paul, MN: APS Press.
- Punithalingam E, Holliday P. 1973. *Botryosphaeria ribis*. CMI descriptions of pathogenic fungi and bacteria, No. 395. Kew, Surrey: Commonwealth Mycological Institute.
- Raabe RD, Conners IL, Martinez AP (College of Tropical Agriculture and Human Resources). 1981. Checklist of plant diseases in Hawaii. Honolulu, HI: University of Hawai'i at Manoa.
- Singh S, Bola I, Kumar J. 1980. Diseases of plantation trees in Fiji Islands: 1. Brown root rot of mahogany (*Swietenia macrophylla* King). *Indian Forester*: 526-533.
- Sivanesan A. 1984. The bitunicate Ascomycetes and their anamorphs. Vaduz, Germany: J Cramer.
- Sivanesan A, Critchett C. 1974. *Elsinoe fawcettii*. CMI descriptions of pathogenic fungi and bacteria, No. 438. Kew, Surrey: Commonwealth Mycological Institute.

- Style Manual Committee, Council of Biology Editors. 1994. Scientific style and format: The CBE manual for authors, editors, and publishers, 6<sup>th</sup> ed. Cambridge: Cambridge University Press.
- Sutton BC. 1969. Forest microfungi. III. The heterogeneity of *Pestalotia* deNot. section sexloculate Klebahn sensu Guba. Canadian Journal of Botany 47: 2083-2094.
- Sutton BC. 1980. The Coelomycetes. Kew, Surrey: Commonwealth Mycological Institute.
- Swendsrud DP, Calpouzos L. 1970. Rust uredospores increase the germination of pycnidiospores of *Darluca filum*. Phytopathology 60: 1445-1447.
- The Plant Names Project. 1999. International plant names index. Published on the Internet, <http://www.ipni.org> (accessed 8 August 2002).
- Vidal C, Lacey LA, Fargues J. 1997. Pathogenicity of *Paecilomyces fumosoroseus* (Deuteromycotina: Hyphomycetes) against *Bemisia argentifolii* (Homoptera: Aleyrodidae) with a description of a bioassay method. Journal of Economic Entomology 90(3): 765-772.
- Waterhouse DF, Norris KR. 1987. Biological control: Pacific prospects. Melbourne: Inkata Press.
- Waterhouse GM, Waterston JM. 1964. *Pythium aphanidermatum*. CMI descriptions of pathogenic fungi and bacteria, No. 36. Kew, Surrey: Commonwealth Mycological Institute.
- Whistler WA. 1984. Annotated list of Samoan plant names. Economic Botany 38(4): 464-489.
- Whistler WA. 1992. Flowers of the Pacific Island seashore. Honolulu, HI: University of Hawaii Press.
- Whistler WA. (Cooperative National Park Resources Studies Unit). 1994a. Botanical inventory of the proposed Tutuila and Ofu units of the National Park of American Samoa. Technical Report 87. Honolulu, HI: University of Hawai'i at Manoa.
- Whistler WA. 1994b. Wayside plants of the islands: A guide to the lowland flora of the Pacific Islands. Hong Kong: Everbest Printing Company.
- Whiteside JO, Garnsey SM, Timmer LW, editors. 1988. Compendium of citrus diseases. St. Paul, MN: APS Press.
- Wingert EA. (project director). 1981. A coastal zone management atlas of American Samoa. Honolulu, HI: University of Hawai'i Cartographic Laboratory.
- Yudin L, Schlub R. 1998. Guam cucurbit guide. Mangilao, Guam: UOG Station, University of Guam.
- Zitter TA, Hopkins DL, Thomas CE, editors. 1996. Compendium of cucurbit diseases. St. Paul, MN: APS Press.