

# PLANTS: Distribution Update

- Users filling in the knowledge gaps on plant distribution

- Focusing on weeds
- Encompassing all plants



An NRCS-APHIS Partnership



# PLANTS: Distribution Update (DU)

- For submitting new state and county records to PLANTS
- Accepts voucher, observation, & literature documentation
- GIS Input
- Validation process
- Subscription alert for new state & county records--Early Warning Rapid Response

The image displays three overlapping screenshots of the PLANTS Distribution Update web application. The top-left screenshot shows the main navigation menu with options like 'Home', 'Links', 'Tools', and 'GoTo-->'. The top-right screenshot shows a 'Step 1' progress indicator and a map interface for entering plant location data. The bottom-right screenshot shows a 'Step 4' progress indicator and a form for providing additional information, including fields for 'Location from Voucher Specimen', 'Habitat from Voucher Specimen', 'Condition of Specimen', and 'Collector' details.

**United States Department of Agriculture**  
NRCNS Natural Resources Conservation Service  
PLANTS Database  
Topics Gallery Links Tools  
GoTo-->  
Advanced Characteristics Checklists Classification Crops Cultural Download DU Excluded Facts Invasive PM-Pubs T&E Wetlands

PLANTS search Common Name [ ] [GO] Contact Us | Site Map

USDA Natural Resources Conservation Service  
Animal and Plant Health Inspection Service  
PLANTS Distribution Update

PLANTS Distribution Update is a system to track and record the distribution of plants, especially but not exclusively invasive and weedy plants. Please use this module for all distribution updates to PLANTS--native and naturalized U.S. plants only. For bulk updates please use the PLANTS Distribution Update: Microsoft Internet Explorer.

More Information About the PLANTS Distribution Update System Requirements Comment on the system

Submit new distribution data to PLANTS  
Requires establishment of a Password  
Microsoft Internet Explorer 4.0 or greater

Subscribe to distribution email alerts

View reports

View data contributors

Validate Submitted Reports  
Requires an authorized Password and a valid email address

Your Privacy and the PLANTS Distribution Update System  
Intellectual Property Statement  
Disclaimers  
USDA non-discrimination policy

Last Updated: 04/21/2004 12:19:00

Step 1: 1 2 3 4 5

Step 4: 1 2 3 4 5

1. Location from Voucher Specimen: (hint)  
2.2 miles SE of junction of Hwy 95 and Tollway Road

2. Habitat from Voucher Specimen, including elevation if available: (hint)  
Artemisia tridentata community, 5540 feet

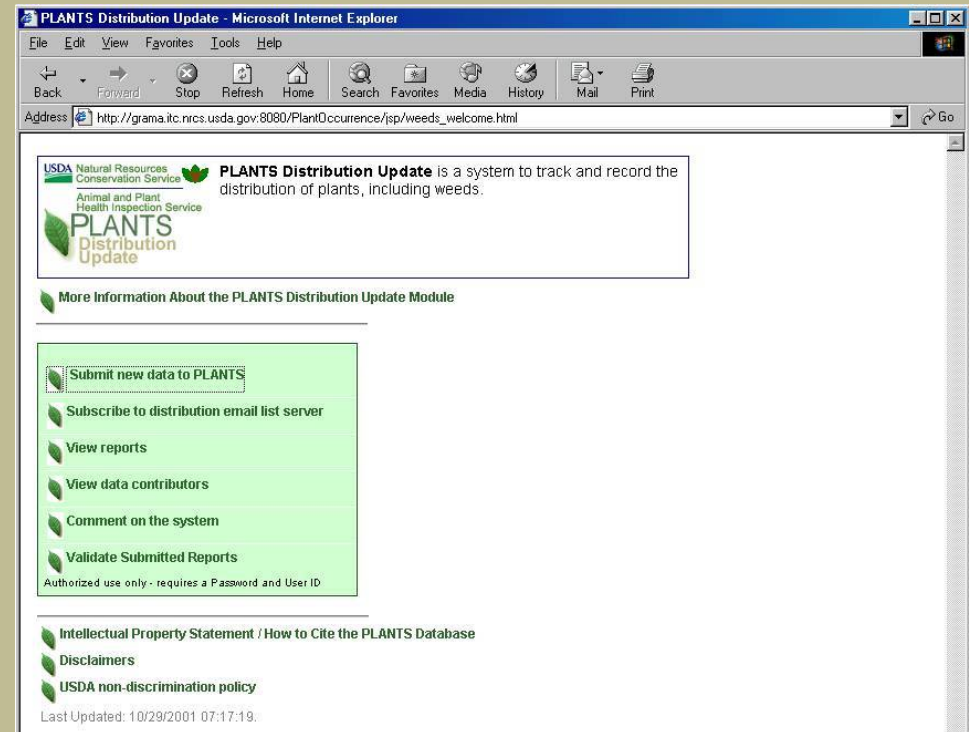
3. Condition of Specimen:  
 Vegetative  
 Flower; Color of flower: [ ]  
 Fruit

4. Collector:  
Collector Name: \* (hint)  
First: Josiah Middle: Last: Grant Suffix: Collector number: (hint)  
Collection date: (hint) \*  
Month: March Day: 25 Year: 1939



# How to Contribute Distribution Data

- Go to PLANTS Web Site
  - <http://plants.usda.gov>
- Click-Distribution Update
- Voucher specimens & literature citations can be validated in a timely manner.
- Create an ID & Password that you can use to expedite future submissions



# Step 1

- Contact Information
- Minimal data input required
- Aimed at single or few submissions per logon

USDA Natural Resources Conservation Service  
Animal and Plant Health Inspection Service  
**PLANTS**  
Distribution Update

**Step 1: Enter your contact information**

Step 1 2 3 4 5

**More Information About the PLANTS Distribution Update Module**

**Step 1: Enter your contact information**

Step 2: Enter information about the plant

Step 3: Identify the location of the plant

Step 4: Choose the submission type and provide additional information

Step 5: Final Confirmation

\* = Required Field

**Contact Information for Reporter: (hint)**

First: Joe \* Address 1:

Middle:  Address 2:

Last: Weedeater \* City:

Suffix:  State: Colorado \*

Phone: 123-007-1234 \* Zip:

Email: joe@noxious.com \* Affiliation:

Position:

**Do you wish to be recognized on the web site as the submitter of this information?**

Yes, associate the my Reporter information with this submission on the public website.

No, do not associate my Reporter information with this submittal on the public website. (We will still retain your information internally).

**Contact Information for Identifier: (hint)**

Same as Contact

Has someone other than you verified the identity of this plant? If so, please identify them.

First:

Middle:

Last:

Suffix:

Phone:

Email:


# Step 2


## ■ Select species


PLANTS Distribution Update - Microsoft Internet Explorer

File Edit View Favorites Tools Help

Back Forward Stop Refresh Home Search Favorites Media History Mail Print

**Step 2: Select the plant to include in your report**

**Step**  
1 **2** 3 4 5



**Use only ONE of the 2 options below to indicate the plant being submitted**

1. Search for Name or Symbol in the PLANTS Database. A list of PLANTS names meeting your search criteria will be displayed from which you can choose:

Scientific Name  (hint)

Search for PLANTS Name -->

---


- OR -


2. If the plant is **known not to exist** in the PLANTS Database, enter Scientific Name and Author(s), if known:


(hint)

Confirm Plant Name -->

---

 [Intellectual Property Statement / How to Cite the PLANTS Database](#)

 [Disclaimers](#)

 [USDA non-discrimination policy](#)

Last Updated: 11/29/2001 11:05:35.

# Step 3a

- Location selection
- Submit by:
  - Lat-Long
  - On-line GIS
  - TRS
  - Only State/County

PLANTS Distribution Update - Microsoft Internet Explorer

File Edit View Favorites Tools Help

Back Forward Stop Refresh Home Search Favorites Media History Mail Print

USDA Natural Resources Conservation Service  
Animal and Plant Health Inspection Service  
**PLANTS**  
Distribution Update

**Step 3a:** Select state and county and select a method to enter information about the location the plant was observed

Plant: *Bromus tectorum L.*

Step  
1 2 **3** 4 5

\* = Required Field

**1. Review information and distribution for: *Bromus tectorum L.* (optional).**  
Link to *Bromus tectorum L.* Profile page. The page will open in another window.

**2. Choose one of the four methods below to specify an exact location of *Bromus tectorum L.***

**2a. Choose to specify latitude/longitude, use the GIS mapping system, or specify the TRS system and then choose a single state and county where *Bromus tectorum L.* is located**

Enter exact location using latitude/longitude coordinates (hint)

Enter exact location via the PLANTS GIS mapping system (hint)

Enter location using Township, Range and Section (TRS) information (hint)

Choose State Choose County  
Colorado | Moffat

**2b. -OR- Choose to select specify state(s) and county(ies) where *Bromus tectorum L.* is located**

Use the selection(s) below to identify the location (hint)

Choose State Choose County Add or Remove Selections  
None Selected | <-----> Add >>

<< Remove

Proceed to Step 3b -->

Intellectual Property Statement / How to Cite the PLANTS Database  
Disclaimers  
USDA non-discrimination policy

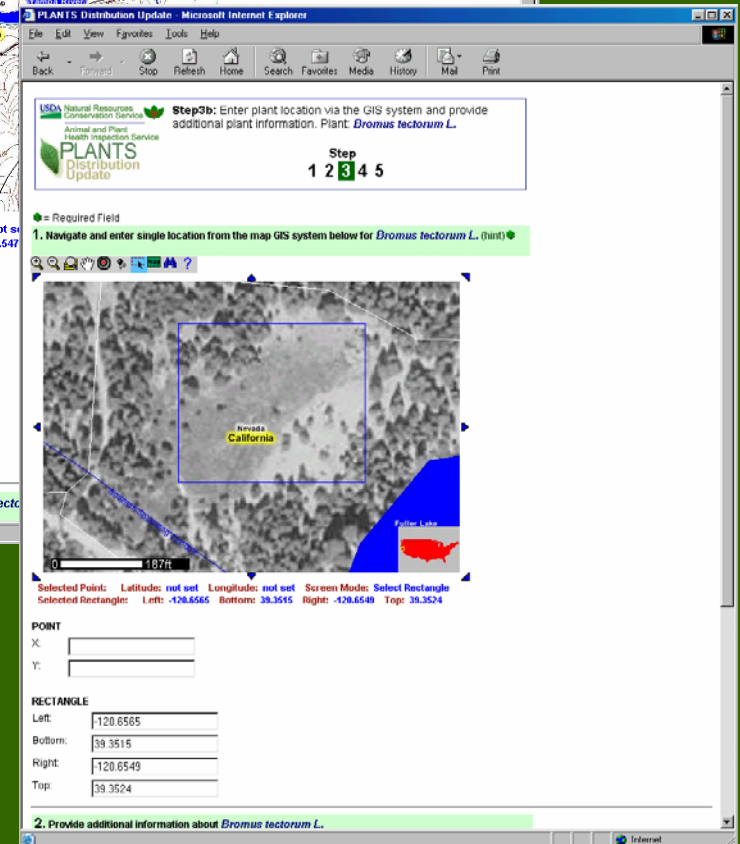
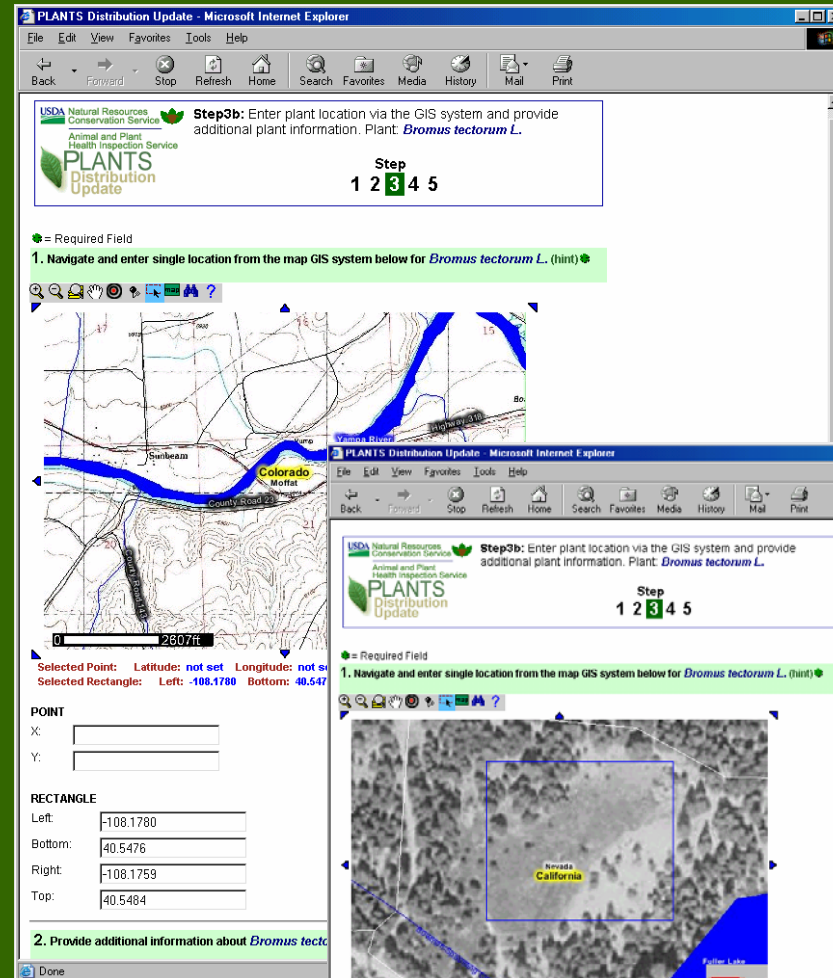
Last Updated: 11/29/2001 11:07:07.

Internet



# Step 3b-GIS

- If you select the GIS submission route
- National coverage
  - orthophoto quad
  - Quadrangle
- Occurrence located by
  - Point
  - Rectangle



# Step 4a

- Submission type
- Voucher
- Literature
- Observation
  - Photo submission
- Note: Voucher & literature are more easily validated

PLANTS Distribution Update - Microsoft Internet Explorer

File Edit View Favorites Tools Help

Back Forward Stop Refresh Home Search Favorites Media History Mail Print

USDA Natural Resources Conservation Service Animal and Plant Health Inspection Service

Step 4a: Select the submission type and supporting material

Step 1 2 3 4 5

● = Required selection

1. Choose the type of submission: ● (hint)

Voucher Specimen  
 Literature  
 Observation

2. Submit photo (hint)

Image File: BRTE Fuller Lake.jpg Browse...

Proceed to to Step 4b -->

[Intellectual Property Statement / How to Cite the PLANTS Database](#)  
[Disclaimers](#)  
[USDA non-discrimination policy](#)

Last Updated: 11/29/2001 11:20:36.



# Step 4b

## ■ Submission comments

PLANTS Distribution Update - Microsoft Internet Explorer

File Edit View Favorites Tools Help

Back Forward Stop Refresh Home Search Favorites Media History Mail Print

USDA Natural Resources Conservation Service Animal and Plant Health Inspection Service  
**PLANTS**  
Distribution Update

**Step 4b:** Complete the submission and provide additional supporting information. Submission type: **Observation**

Step  
1 2 3 **4** 5

◆ = Required Field

**1. Habitat from Observation: (hint)**

clearing in Pinus ponderosa forest completely infested

**2. Condition from Observation: (hint)**

Vegetative  
 Flower, Color of flower:   
 Fruit

**3. Observation Date (hint) ◆**

July 8 2001

**4. Observation notes (hint)**

site northwest of Fuller Lake along dirt road just north of Bowman Tunnel outflow

Confirm your submission to the PLANTS Distribution Update Module

Proceed to Step 5-->

[Intellectual Property Statement / How to Cite the PLANTS Database](#)  
[Disclaimers](#)  
[USDA non-discrimination policy](#)

Last Updated: 11/29/2001 11:22:32.

# Step 5

- Opportunity to check and revise input

PLANTS Distribution Update - Microsoft Internet Explorer

File Edit View Favorites Tools Help

USDA Natural Resources Conservation Service  
Animal and Plant Health Inspection Service  
**PLANTS**  
Distribution Update

**Step 5:** Review the information you have provided. If you wish to change data, click on the appropriate change button. Click on the submit button to send your information to PLANTS.

Step  
1 2 3 4 **5**

**Step 1. Contact Information** [Change](#)

**Reporter**

Reporter First Name: **Joe**  
Reporter Middle Name:  
Reporter Last Name: **Weedeater**  
Reporter Suffix:  
Reporter Phone: **123-007-1234**  
Reporter Email: **joe@noxious.com**  
Affiliation:  
Position:  
Address 1:  
Address 2:  
City:  
State: **08**  
Zip:  
Recognition: **yes**

**Identifier**

Identifier First Name:  
Identifier Middle Name:  
Identifier Last Name:  
Identifier Suffix:  
Identifier Phone:  
Identifier Email:  
Affiliation:  
Position:

**Step 2. Identify the plant** [Change](#)

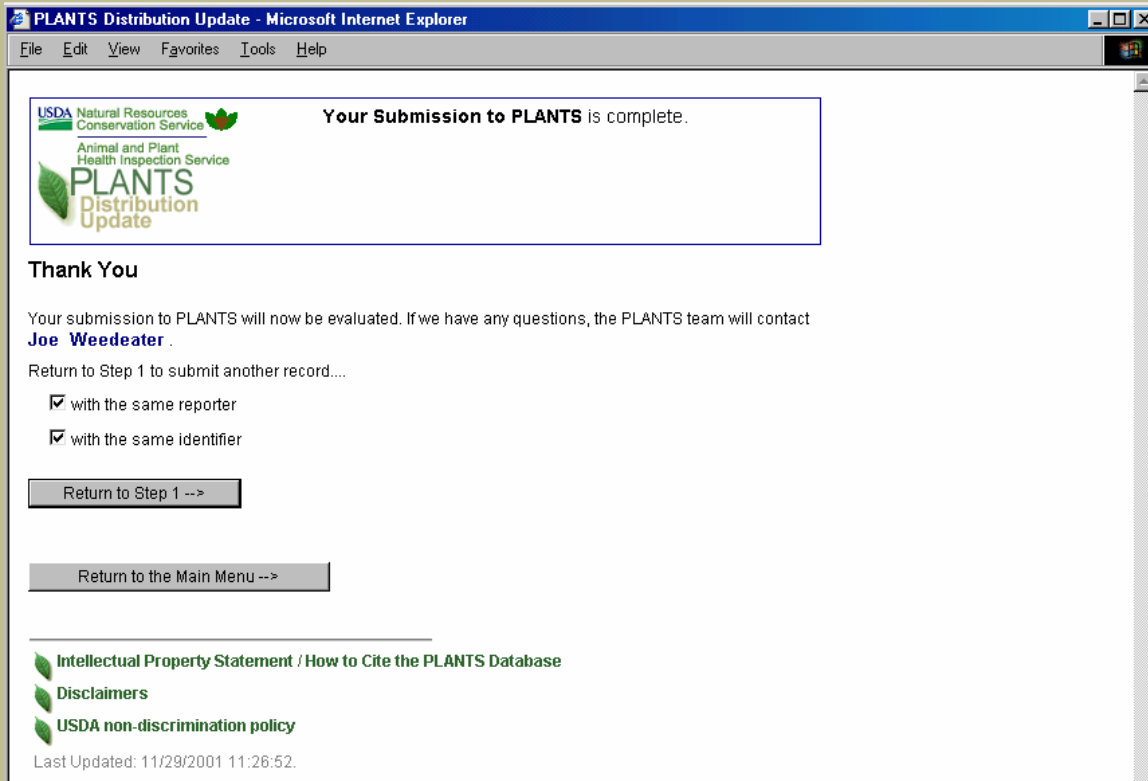
Scientific Name: ***Bromus tectorum L.***  
Common Name: **cheatgrass**  
Plant Symbol (Accepted): **BRTE**  
Plant Symbol (Synonym):

**Step 3. Identify the location the plant** [Change](#)

State/County: **California:Nevada**  
Location Method: **gis** Area:  
Upper Left Latitude: **39.3524** Longitude: **-120.6565**  
Lower Right Latitude: **39.3515** Longitude: **-120.6549**  
Density or abundance:  
Directions to location:

Internet

# Submit



PLANTS Distribution Update - Microsoft Internet Explorer

File Edit View Favorites Tools Help

USDA Natural Resources Conservation Service  
Animal and Plant Health Inspection Service  
**PLANTS**  
Distribution Update

Your Submission to PLANTS is complete.

**Thank You**

Your submission to PLANTS will now be evaluated. If we have any questions, the PLANTS team will contact **Joe Weedeater**.

Return to Step 1 to submit another record...

with the same reporter  
 with the same identifier

Return to Step 1 -->

Return to the Main Menu -->

[Intellectual Property Statement / How to Cite the PLANTS Database](#)  
[Disclaimers](#)  
[USDA non-discrimination policy](#)

Last Updated: 11/29/2001 11:26:52.

- Opportunity to add another at Step 2
- Bulk loads handled on a case by case basis



# NRCS: A Global Plant Information Leader

- USDA NRCS  
National Plant Data Center  
Baton Rouge  
Louisiana  
USA

- <http://npdc.usda.gov>