

Oklahoma

<http://sde.state.ok.us>

School and Teacher Demographics

Per pupil expenditures
(CCD, 1999-2000) \$5,395

Number of Districts
(CCD, 2000-01) 545

Number of Charter Schools
(CCD, 2000-01) 6

Number of Public Schools (CCD)

	1993-94	2000-01
Elementary	993	984
Middle	341	344
High	458	462
Combined	-	1
Total	1,792	1,791

Number of FTE Teachers (CCD)

	1993-94	2000-01
Elementary	19,946	20,768
Middle	7,706	8,727
High	9,703	11,122
Combined	-	125
Total	37,355	40,742

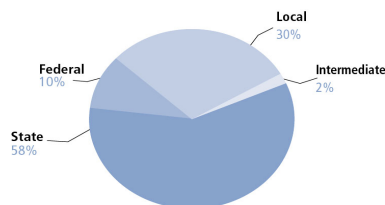
Percentage of teachers with a major in the main subject taught, grades 7-12 (SASS)

	1994	2000
English	78%	57%
Math	74	70
Science	62	67
Social Studies	71	53

Sources of Funding

District Average

(CCD, 1999-2000)



Student Demographics

Public school enrollment
(CCD)

	1993-94	2000-01
Pre-K	5,456	23,475
K-8	434,412	419,538
9-12	162,511	176,709
Total (K-12)	596,923	596,247

Race/ethnicity
(CCD)

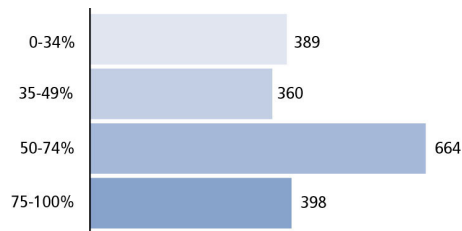
	1993-94	2000-01
American Indian/Alaskan Natives	14%	17%
Asian/Pacific Islander	1	1
Black	10	11
Hispanic	3	6
White	72	65
Other	-	-

Students with disabilities (OSEP)	1993-94	2000-01
	11%	12%

Students with limited English proficiency (ED/NCBE)	1993-94	2000-01
	4%	7%

Migratory students (OME)	1993-94	2000-01
	1%	1%

All schools by percent of students eligible to participate in the Free and Reduced-Price Lunch Program
(CCD, 2000-01)



Key

* = Less than 0.5 percent
— = Not applicable

n/a = Not available
= Sample size too small to calculate
High Poverty Schools = 75-100% of students qualify for lunch subsidies

Statewide Accountability Information

(Collected from states, January 2002 for 2001-02 school year.)

Statewide Goal for Schools on State Assessment

Seventy percent of students score satisfactory on index for reading and math.

Expected School Improvement on Assessment

Annual improvement toward satisfactory rating.

Title I Adequate Yearly Progress (AYP) for Schools

Five percent gain in satisfactory scores in schools with less than 50 percent satisfactory in reading or math.

Title I 2000-01

(ED Consolidated Report, 2000-01)

	Schoolwide Programs	Targeted Assistance	Total
Number of schools	754	408	1,162
	65%	35%	100%
Schools meeting AYP	732	399	1,131
Goal	97%	98%	97%
Schools identified for Improvement	22	7	29
	3%	2%	2%

Title I Allocation \$101,976,354

(Includes Basic, Concentration, and LEA grants, Capital Expenditures, Even Start, Migrant Education, and Neglected and Delinquent, ED, 2000-01)

NAEP State Results

	Grade 4	Grade 8
Reading, 2002		
Proficient level and above	26%	27%
Basic level and above	60	75
Math, 2000		
Proficient level and above	17%	19%
Basic level and above	70	65

Oklahoma Student Achievement 2000-01

Assessment:
Oklahoma Core Curriculum Tests.

State Definition of Proficient:
Satisfactory.

Key

* = Less than 0.5 percent
— = Not applicable

n/a = Not available
= Sample size too small to calculate
High Poverty Schools = 75-100% of students qualify for lunch subsidies

Elementary School

Grade 5 Reading

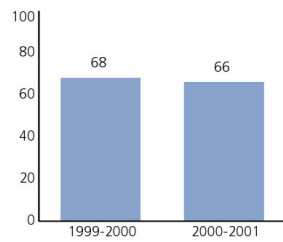
Students in:	Unsatisfactor y	Limited Knowledge	Satisfactory	Adv.
All schools	13%	21%	55%	11%
Title I schools	14	23	54	9
High poverty Schools	19	28	48	5
Students with limited English proficiency	22	36	41	2
Migratory students	18	31	48	2
Students with Disabilities	48	31	19	1

Grade 5 Mathematics

Students in:	Unsatisfactor y	Limited Knowledge	Satisfactory	Adv.
All schools	9%	27%	48%	16%
Title I schools	10	29	47	13
High poverty Schools	14	34	43	9
Students with limited English proficiency	11	42	38	9
Migratory students	10	38	41	11
Students with Disabilities	39	40	19	2

Student Achievement Trend

Reading 5th grade meets or exceeds Proficient



Key

* = Less than 0.5 percent
 — = Not applicable

n/a = Not available
 # = Sample size too small to calculate
 High Poverty Schools = 75-100% of students qualify for lunch subsidies

Middle School

Grade 8 Reading

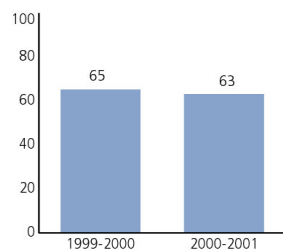
Students in:	Unsatisfactory	Limited Knowledge	Satisfactory	Adv.
All schools	11%	18%	58%	12%
Title I schools	14	21	55	10
High poverty Schools	19	24	50	6
Students with limited English proficiency	35	29	33	3
Migratory students	29	26	41	5
Students with Disabilities	49	28	22	1

Grade 8 Mathematics

Students in:	Unsatisfactory	Limited Knowledge	Satisfactory	Adv.
All schools	12%	25%	48%	15%
Title I schools	15	28	45	12
High poverty Schools	18	33	40	7
Students with limited English proficiency	30	40	27	3
Migratory students	30	35	34	2
Students with Disabilities	48	36	15	1

Student Achievement Trend

Mathematics 8th grade meets or exceeds Proficient



Key

* = Less than 0.5 percent
 — = Not applicable

n/a = Not available
 # = Sample size too small to calculate
 High Poverty Schools = 75-100% of students qualify for lunch subsidies

High School

**Grade 10
English II, End-of-
Instruction**

Students in:	Unsatisfactor y	Limited Knowledge	Satisfactory	Adv.
All schools	10%	26%	57%	7%
Title I schools	13	31	51	4
High poverty Schools	18	35	45	3
Students with limited English proficiency	32	45	22	3
Migratory students	16	45	36	4
Students with Disabilities	48	39	13	*

Grade

Students in:

All schools
Title I schools
High poverty Schools

Students with limited
English proficiency
Migratory students
Students with Disabilities

High School Indicators	1993-94	2000-01
High school dropout rate (CCD, event)	5%	5%
	1994-95	2000-01
Postsecondary enrollment (NCES, High school grads enrolled in college)	49%	50%

Key

* = Less than 0.5 percent
— = Not applicable

n/a = Not available
= Sample size too small to calculate
High Poverty Schools = 75-100% of students qualify for lunch subsidies