

Kansas

<http://www.ksbe.state.ks.us>

School and Teacher Demographics

Per pupil expenditures
(CCD, 1999-2000) \$6,294

Number of Districts
(CCD, 2000-01) 304

Number of Charter Schools
(CCD, 2000-01) 1

Number of Public Schools (CCD)

	1993-94	2000-01
Elementary	866	818
Middle	235	247
High	351	357
Combined	1	2
Total	1,453	1,424

Number of FTE Teachers (CCD)

	1993-94	2000-01
Elementary	14,842	15,793
Middle	5,691	6,414
High	9,146	10,494
Combined	23	73
Total	29,702	32,774

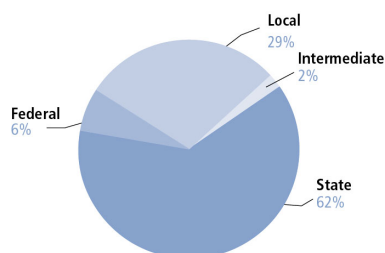
Percentage of teachers with a major in the main subject taught, grades 7-12 (SASS)

	1994	2000
English	63%	66%
Math	63	58
Science	78	73
Social Studies	73	71

Sources of Funding

District Average

(CCD, 1999-2000)



Student Demographics

Public school enrollment
(CCD)

	1993-94	2000-01
Pre-K	2,432	5,371
K-8	324,914	310,325
9-12	127,081	142,380
Total (K-12)	451,995	452,705

Race/ethnicity
(CCD)

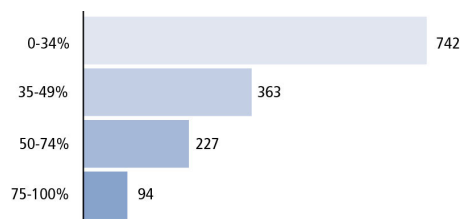
	1993-94	2000-01
American Indian/Alaskan Natives	1%	1%
Asian/Pacific Islander	2	2
Black	8	9
Hispanic	5	9
White	84	79
Other	-	-

Students with disabilities (OSEP)	1993-94	2000-01
	9%	11%

Students with limited English proficiency (ED/NCBE)	1993-94	2000-01
	2%	3%

Migratory students (OME)	1993-94	2000-01
	3%	7%

All schools by percent of students eligible to participate in the Free and Reduced-Price Lunch Program
(CCD, 2000-01)



Key

* = Less than 0.5 percent
— = Not applicable

n/a = Not available
= Sample size too small to calculate
High Poverty Schools = 75-100% of students qualify for lunch subsidies

Statewide Accountability Information

(Collected from states, January 2002 for 2001-02 school year.)

Statewide Goal for Schools on State Assessment

Reading: Greater than 87 percent students proficient; Math: greater than 60 percent proficient; Science: grade 4 greater than 76 percent proficient; grade 7 greater than 68 percent proficient; grade 10 greater than 61 percent proficient; social studies: grade 6 greater than 64 percent proficient; grades 8, 11 greater than 67 percent proficient.

Expected School Improvement on Assessment

Annual gain toward goal.

Title I Adequate Yearly Progress (AYP) for Schools

Same as statewide goal.

Title I 2000-01

(ED Consolidated Report, 2000-01)

	Schoolwide Programs	Targeted Assistance	Total
Number of schools	192	450	642
	30%	70%	100%
Schools meeting AYP Goal	172	360	532
	90%	80%	83%
Schools identified for Improvement	70	48	118
	36%	11%	18%

Title I Allocation \$69,683,164

(Includes Basic, Concentration, and LEA grants, Capital Expenditures, Even Start, Migrant Education, and Neglected and Delinquent, ED, 2000-01)

NAEP State Results

	Grade 4	Grade 8
Reading, 2002		
Proficient level and above	33%	38%
Basic level and above	67	80
Math, 2000		
Proficient level and above	30%	34%
Basic level and above	76	77

Kansas

Student Achievement 2000-01

Assessment:

Kansas Math and Reading Assessment.

State Definition of Proficient:

Reading: Grades 5, 8, 11: at least 87 percent.

Math, Grades 4, 7, 10: at least 60 percent.

Key

* = Less than 0.5 percent
 — = Not applicable

n/a = Not available
 # = Sample size too small to calculate
 High Poverty Schools = 75-100% of students qualify for lunch subsidies

Elementary School

Grade 5 Reading

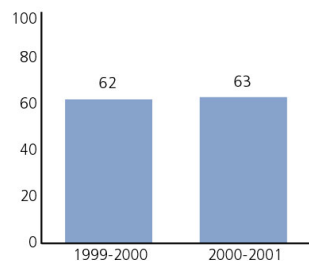
Students in:	Level 1	Level 2	Level 3	Level 4	Level 5
All schools	14%	23%	24%	25%	14%
Title I schools					
High poverty Schools	34	31	18	12	5
Students with limited English proficiency	50	30	13	6	2
Migratory students	38	33	18	9	3
Students with Disabilities	38	29	16	11	6

Grade 4 Mathematics

Students in:	Level 1	Level 2	Level 3	Level 4	Level 5
All schools	12%	21%	25%	25%	17%
Title I schools					
High poverty Schools	31	30	22	12	5
Students with limited English proficiency	28	33	22	12	4
Migratory students	25	34	23	14	4
Students with Disabilities	27	27	22	16	8

Student Achievement Trend

Reading 5th grade meets or exceeds Level 3



Key

* = Less than 0.5 percent
 — = Not applicable

n/a = Not available
 # = Sample size too small to calculate
 High Poverty Schools = 75-100% of students qualify for lunch subsidies

Middle School

Grade 8 Reading

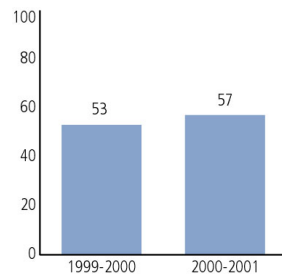
Students in:	Level 1	Level 2	Level 3	Level 4	Level 5
All schools	12%	23%	31%	27%	8%
Title I schools					
High poverty Schools	36	32	22	8	*
Students with limited English proficiency	47	33	13	7	*
Migratory students	39	34	19	8	0
Students with Disabilities	40	31	18	9	2

Grade 7 Mathematics

Students in:	Level 1	Level 2	Level 3	Level 4	Level 5
All schools	22%	22%	22%	20%	15%
Title I schools					
High poverty Schools	57	25	11	6	1
Students with limited English proficiency	68	19	9	3	2
Migratory students	51	29	13	6	1
Students with Disabilities	50	22	14	9	5

Student Achievement Trend

Mathematics 7th grade meets or exceeds Level 3



Key

* = Less than 0.5 percent
 — = Not applicable

n/a = Not available
 # = Sample size too small to calculate
 High Poverty Schools = 75-100% of students qualify for lunch subsidies

High School

Grade 11 Reading

Students in:	Level 1	Level 2	Level 3	Level 4	Level 5
All schools	16%	29%	26%	19%	10%
Title I schools					
High poverty Schools	64	27	7	2	*
Students with limited English proficiency	49	35	10	4	0
Migratory students	47	34	13	6	0
Students with Disabilities	53	27	12	6	3

Grade 10 Mathematics

Students in:	Level 1	Level 2	Level 3	Level 4	Level 5
All schools	27%	29%	20%	11%	13%
Title I schools					
High poverty Schools	79	19	2	0	0
Students with limited English proficiency	51	29	12	5	4
Migratory students	56	26	13	5	2
Students with Disabilities	58	26	9	4	3

High School Indicators	1993-94	2000-01
High school dropout rate (CCD, event)	n/a	3%
Postsecondary enrollment (NCES, High school grads enrolled in college)	57%	68%

Key

* = Less than 0.5 percent
 — = Not applicable

n/a = Not available
 # = Sample size too small to calculate
 High Poverty Schools = 75-100% of students qualify for lunch subsidies