

Georgia

<http://www.doe.k12.ga.us>

School and Teacher Demographics

Per pupil expenditures
(CCD, 1999-2000) \$6,437

Number of Districts
(CCD, 2000-01) 180

Number of Charter Schools
(CCD, 2000-01) 30

Number of Public Schools (CCD)

	1993-94	2000-01
Elementary	1,085	1,183
Middle	309	400
High	277	317
Combined	67	37
Total	1,738	1,937

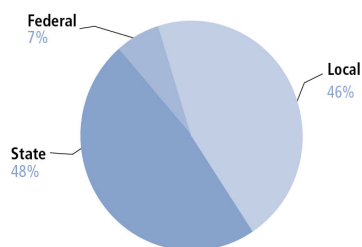
Number of FTE Teachers (CCD)

	1993-94	2000-01
Elementary	38,541	44,823
Middle	15,534	20,690
High	17,770	21,906
Combined	8,842	1,504
Total	80,687	88,923

Percentage of teachers with a major in the main subject taught, grades 7-12 (SASS)

	1994	2000
English	82%	64%
Math	82	69
Science	68	70
Social Studies	90	88

Sources of Funding District Average (CCD, 1999-2000)



Student Demographics

Public school enrollment

(CCD)

	1993-94	2000-01
Pre-K	5,534	32,248
K-8	904,891	1,027,735
9-12	324,879	384,954
Total (K-12)	1,229,770	1,412,689

Race/ethnicity

(CCD)

	1993-94	2000-01
American Indian/Alaskan Natives	*	*
Asian/Pacific Islander	1%	2%
Black	37	38
Hispanic	2	2
White	60	55
Other	-	-

Students with disabilities

(OSEP)

1993-94	2000-01
9%	10%

Students with limited English proficiency

(ED/NCBE)

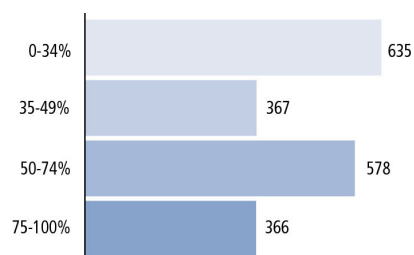
1993-94	2000-01
1%	5%

Migratory students

(OME)

1993-94	2000-01
1%	2%

All schools by percent of students eligible to participate in the Free and Reduced-Price Lunch Program (CCD, 2000-01)



Key

* = Less than 0.5 percent
 — = Not applicable

n/a = Not available
 # = Sample size too small to calculate
 High Poverty Schools = 75-100% of students qualify for lunch subsidies

Statewide Accountability Information

(Collected from states, January 2002 for 2001-02 school year.)

Statewide Goal for Schools on State Assessment

Use of letter grades A-F scale with test scores.

Expected School Improvement on Assessment

Under development.

Title I Adequate Yearly Progress (AYP) for Schools

Reduce by 5 percent the number of students Not Meeting Standard.

Title I 2000-01

(ED Consolidated Report, 2000-01)

	Schoolwide Programs	Targeted Assistance	Total
Number of schools	766 72%	297 28%	1,063 100%
Schools meeting AYP Goal	301 39%	138 46%	439 41%
Schools identified for Improvement	465 61%	160 54%	625 59%

Title I Allocation \$226,462,026

(Includes Basic, Concentration, and LEA grants, Capital Expenditures, Even Start, Migrant Education, and Neglected and Delinquent, ED, 2000-01)

NAEP State Results

	Grade 4	Grade 8
Reading, 2002		
Proficient level and above	28%	26%
Basic level and above	59	70
Math, 2000		
Proficient level and above	18%	19%
Basic level and above	58	56

Georgia

Student Achievement 2000-01

Assessment:

Elementary, Middle School: Criterion-Referenced Competency Tests

High School: Georgia High School Graduation Tests.

State Definition of Proficient:

Grades 4 and 8: Scores at least 300.

Grade 11: Score of at least 500.

Key

* = Less than 0.5 percent
— = Not applicable

n/a = Not available

= Sample size too small to calculate

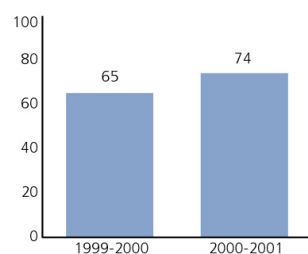
High Poverty Schools = 75-100% of students qualify for lunch subsidies

Elementary School
Grade 4 Reading

Students in:	Did Not Meet Standard	Met Standard	Exceeded Standard
All schools	26%	42%	32%
Title I schools	31	43	26
High poverty Schools	39	44	17
Students with limited English proficiency	71	25	4
Migratory students	56	34	9
Students with Disabilities	65	27	7

Grade 4 Mathematics

Students in:	Did Not Meet Standard	Met Standard	Exceeded Standard
All schools	38%	51%	12%
Title I schools	44	49	8
High poverty Schools	53	43	4
Students with limited English proficiency	74	25	1
Migratory students	65	34	1
Students with Disabilities	76	21	2

Student Achievement TrendReading 4th grade meets or exceeds Standard**Key**

* = Less than 0.5 percent
 — = Not applicable

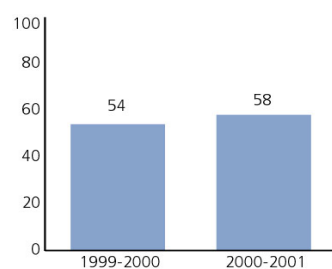
n/a = Not available
 # = Sample size too small to calculate
 High Poverty Schools = 75-100% of students qualify for lunch subsidies

Middle School
Grade 8 Reading

Students in:	Did Not Meet Standard	Met Standard	Exceeded Standard
All schools	18%	32%	50%
Title I schools	22	36	42%
High poverty Schools	30	41	30
Students with limited English proficiency	60	31	9
Migratory students	46	33	21
Students with Disabilities	59	28	13

Grade 8 Mathematics

Students in:	Did Not Meet Standard	Met Standard	Exceeded Standard
All schools	41%	48%	10%
Title I schools	49	45	6
High poverty Schools	62	35	3
Students with limited English proficiency	72	25	3
Migratory students	63	34	3
Students with Disabilities	84	15	1

Student Achievement TrendMathematics 8th grade meets or exceeds Standard**Key**

* = Less than 0.5 percent
 — = Not applicable

n/a = Not available
 # = Sample size too small to calculate
 High Poverty Schools = 75-100% of students qualify for lunch subsidies

High School
**Grade 11
English/Language Arts**

Students in:	Did Not Meet Standard	Met Standard	Exceeded Standard
All schools	6%	40%	54%
Title I schools			
High poverty Schools			
Students with limited English proficiency	51	41	8
Migratory students	21	58	21
Students with Disabilities	32	50	17

**Grade 11
Mathematics**

Students in:	Did Not Meet Standard	Met Standard	Exceeded Standard
All schools	9%	46%	45%
Title I schools			
High poverty Schools			
Students with limited English proficiency	26	54	20
Migratory students	25	52	22
Students with Disabilities	43	47	10

High School Indicators	1993-94	2000-01
High school dropout rate (CCD, event)	9%	7%
	1994-95	2000-01
Postsecondary enrollment (NCES, High school grads enrolled in college)	59%	60%

Key

* = Less than 0.5 percent
 — = Not applicable

n/a = Not available
 # = Sample size too small to calculate
 High Poverty Schools = 75-100% of students qualify for lunch
 subsidies