

August 26, 2005

## Construction of Average Weekly Hours for Supervisory and Nonproduction Wage and Salary Workers in Detailed Industries

In measuring output per hour for detailed industries, the Division of Industry Productivity Studies (DIPS) in the Bureau of Labor Statistics (BLS) constructs annual total hours series for each industry. To construct these series, the Bureau relies primarily on data collected in the BLS monthly Current Employment Statistics (CES) survey of U.S. establishments. The CES provides monthly and annual data on total employment, as well as data on employment and average weekly hours of production and nonsupervisory workers, by detailed industry. However, the CES does not collect data on the hours of nonproduction and supervisory workers, and therefore the hours must be estimated. This report describes the construction of these estimates for detailed industries.<sup>1</sup>

Average weekly hours of supervisory and nonproduction workers in each industry are derived using data from the BLS-sponsored Current Population Survey (CPS), a monthly household survey, and data from the CES establishment survey. Annual ratios of supervisory worker average weekly hours to nonsupervisory worker average weekly hours for each service-providing industry are calculated from the CPS data. Similarly, ratios of nonproduction worker average weekly hours to production worker average weekly hours for each manufacturing and mining industry are also calculated. These ratios are applied to the CES nonsupervisory or production worker average weekly hours, respectively, for the industry to estimate the nonproduction or supervisory worker average weekly hours by industry.

In this effort, the Division of Industry Productivity Studies (DIPS) uses data sources and methods similar to those used by the Bureau's Division of Major Sector Productivity (DMSP), described in a report on this website at [www.bls.gov/lpc/lprswawhtech.pdf](http://www.bls.gov/lpc/lprswawhtech.pdf), and in "Alternative measures of supervisory employee hours and productivity growth" in the October 2004 *Monthly Labor Review*, available at <http://www.bls.gov/opub/mlr/2004/04/art2full.pdf>. While the methods and data are similar, some differences occur in constructing industry-specific estimates. This report will discuss those differences.

### The Methodology

Productivity and cost measures for detailed industries are maintained back to 1987. The adjusted hours series discussed here were developed for the period 1987

---

<sup>1</sup> The hours of self-employed and unpaid family workers also are included in industries where those workers tend to be relatively large. Estimates for self employed and unpaid family workers are not available from the CES establishment survey and are separately constructed using CPS data. This report does not discuss the estimation of self-employed and unpaid family worker hours, however.

through 2002. They have since been extended to 2003 and will be updated to current years in future updates of the industry productivity measures.

*Defining nonproduction and supervisory workers in the establishment survey*

Estimates of nonproduction or supervisory worker employment in each industry are derived from the CES establishment survey by subtracting the estimate of production workers, construction workers, or nonsupervisory workers from the total employees in that industry. In the CES, production workers in manufacturing and natural resources and mining refer to employees who engage directly in the production of the establishment's products; production workers include working supervisors and group leaders who may be in charge of a group of employees, but whose supervisory function is only incidental to their regular work. In construction industries CES data refer to construction workers, while in utilities industries and in service-providing industries, CES data refer to nonsupervisory workers.<sup>2</sup> Nonsupervisory workers are defined to include most employees except those whose major responsibility is to supervise, plan, or direct the work of others, such as top executive and managerial positions, officers of corporations, department heads, and superintendents.

*Defining nonproduction and supervisory workers in the household survey*

In the CPS, respondents are not asked to classify themselves as production, nonproduction, nonsupervisory or supervisory workers. They are asked, however, to report on their occupation and employment status. Using this information, we constructed employment counts and worker categories in a manner that is highly consistent with the way employers report on workers for the CES.

The CPS microdata that were used cover all private wage and salary workers who were employed and at work beginning with data for January 1987. We sorted these data into categories of nonproduction (supervisory) or production (nonsupervisory) workers based on industry and occupation codes. For data prior to 2000, we define nonproduction workers in goods-producing industries as those in the following occupational groups:

- Executive, administrative, and managerial occupations
- Professional specialty occupations
- Technical, sales and administrative support occupations

In nongoods-producing industries, supervisory workers are defined as persons in:

- Executive, administrative, and managerial occupations

Beginning with data for 2000, the CPS occupation codes are consistent with the 2000 population census. We define nonproduction workers in goods-producing industries to include the following:

---

<sup>2</sup> The Bureau does not currently maintain productivity measures for construction industries.

Management occupations  
Business and financial operations occupations  
Computer and mathematical occupations  
Architecture and engineering occupations  
Life, physical, and social science occupations  
Community and social service occupations  
Legal occupations  
Education, training, and library occupations  
Arts, design, entertainment, sports, and media occupations  
Healthcare practitioners and technical occupations  
Sales and related occupations  
Office and administrative support occupations

In nongoods-producing industries, supervisory workers include:

Management occupations  
Business and financial operations occupations

Using this information, employment and hours of relevant occupational categories in each industry were grouped to arrive at estimates for production, nonproduction, supervisory, and nonsupervisory workers consistent with the CES data.

#### *Calculating Average Weekly Hours of Supervisory and Nonproduction Workers*

Annual estimates of employment and average weekly hours from the CPS household survey were constructed as annual averages of the estimates derived from the monthly survey data. CPS estimates of annual average weekly hours for each industry were constructed by dividing the sum of average weekly hours for each month in a given year by the sum of monthly employment in that industry during the year.

Hours data for production and nonsupervisory workers in detailed industries from the establishment survey are hours paid. At the major sector level, data on the relationship between hours worked and hours paid from other establishment surveys are available to convert hours paid to hours worked. This information is not available for detailed industries. The CPS, however, collects information on hours worked. Because the estimates of hours obtained from respondents in the CPS reflect hours worked rather than hours paid, the measure of the employed used in estimating employment and hours for individual industries from the CPS data was constructed to include those employed and at work during the survey period, rather than all employees paid. The estimates of average weekly hours for detailed industries constructed from the CPS data thus use the ratio of hours worked to employees at work as a proxy for the ratio of hours paid to employees paid.

## **Adjustments to Historical CPS Data**

### *Multiple Jobholding*

A major redesign of the CPS survey occurred in 1994, causing inconsistencies between CPS data collected before and after 1994. In particular, prior to 1994 the monthly CPS household survey data classified individuals only according to the industry and occupation of his or her primary job. In contrast, from 1994 forward the CPS data also provide information on the industry and occupation of secondary jobs, and information on hours worked at both the primary and the secondary job. Beginning in 1994, the CPS data can be combined to be more consistent with the data from the CES establishment survey, which measures jobs, counting a person who is employed by two or more establishments at each place of employment. BLS adjusted the CPS data prior to 1994 for multiple jobholding to be consistent with the data for 1994 forward. Adjustment ratios were constructed from the 1994 CPS data, where employment and hours of multiple jobholders in all twelve months were classified according to both the old and the new method. (Additional information was also available from the May 1985, 1989, and 1991 supplements to the CPS, but too few observations were available at the industry level from these monthly supplements to construct reliable adjustment ratios.) The industry-specific adjustment ratios based on 1994 employment and hours data were applied to the pre-1994 data to make them consistent with the later data.

### *Industry Coding*

Industry employment and hours data from the CES establishment survey are identified with codes pertaining to the North American Industry Classification System (NAICS). In contrast, the Current Population Survey (CPS) uses the Census Bureau's Industry Classification System (ICS) for coding industries. Depending on the year, an ICS code may represent a detailed industry as classified in the Standard Industrial Classification (SIC) system or the NAICS system, or a combination of several industries. CPS data classified at the most detailed ICS industry level were used wherever possible.

From 1987 to 2002, each ICS code corresponds roughly to a 3-digit SIC code, although in some instances it corresponds to a 2-, 3-, or 4-digit SIC code or combination of several SIC codes. The ICS industry codes are updated in every decennial Census of Population to take into account SIC changes that introduce new industries and eliminate obsolete ones. The period studied, 1987-2002, includes two different SIC-based classification systems. For the years 1987-1991, the ICS is based on the 1980 Census, which uses the 1972 SIC classification, as modified in 1977. The ICS for the years 1992-2002 is based on the 1990 Census which uses the 1987 SIC classification. As a result of the changes made in the SIC and the ICS, some changes to coding were necessary to keep industries consistent throughout the period of the study. The recoding was done as the datasets were created.

In recent years NAICS has replaced the SIC system for reporting U.S. data by industry. In 2003 the CES data were published on a NAICS basis for the first time, and

historical series were reconstructed to reflect the new industry structure. The NAICS system was also officially introduced into the CPS data in 2003, and CPS data for 2000-02 are available on both an SIC and a NAICS basis. In order to have consistent historical NAICS CPS series back to 1987 for estimating supervisory and nonproduction worker average weekly hours by industry, the Industry Productivity Studies staff used a multi-step process to convert the historical CPS data from SIC-based ICS codes to NAICS-based codes. Using the dual-coded CPS data for 2000-02, SIC to NAICS conversion ratios were calculated to reflect the percentage of SIC industry employment accounted for by the employment in each NAICS industry. Adjustments to the initial conversion ratios were later made based on a comparison of the NAICS industry employment levels for 2000-02 generated by applying this ratio with the employment estimates from the CPS data provided on a NAICS basis. NAICS final employment and hours estimates for 1987-2002 were derived by applying the adjusted conversion ratios to the historical SIC-based employment and hours series.

### **Construction of Adjusted Hours Series**

Employment, total hours, and average weekly hours series were constructed separately for supervisory (nonproduction) workers and for nonsupervisory (production) workers for each ICS industry for the years 1987-2002 using CPS data. Using these series, the ratios of supervisory worker average weekly hours to nonsupervisory worker average weekly hours and nonproduction worker average weekly hours to production worker average weekly hours were calculated for each of 301 ICS industries at the greatest level of detail available, representing industries at the 3-, 4-, 5-, or 6-digit NAICS level, as well as combinations of industries. Included were 52 industries that were created by combining data for detailed ICS industries to more closely represent a 3-digit NAICS industry.

In using CPS microdata classified by detailed industry, the number of responses collected for each industry in the household survey was an important factor in assessing the reliability of the estimates. The employment size of the industry and the volatility of the constructed annual ratios were also considered. For some industries, the number of observations was insufficient to produce reliable estimates of employment and hours. The level of industry detail to be used in calculating the average weekly hours ratios was based on the number of responses for that industry in the CPS survey. Data for the most detailed industries classified in the CPS were used wherever possible, as long as the average number of responses for the industry was 492 or greater per year. For detailed industries where there were insufficient responses, the average weekly hours ratios were calculated using data for a more highly aggregated industry.

Once the level of industry detail to be used was determined, ratios of supervisory (nonproduction) worker average weekly hours to nonsupervisory (production) worker average weekly hours were calculated from the CPS data. Table 1 shows the level of CPS industry detail used, as well as the ratios for selected years, for each of the industries for which BLS maintains output per hour measures. The ratios were then multiplied by the number of nonsupervisory (production) worker average weekly hours from the

establishment survey to create supervisory (nonproduction) worker average weekly hours for each industry. The supervisory (nonproduction) average weekly hours are then multiplied by the number of supervisory (nonproduction) workers from the establishment survey to create total supervisory (nonproduction) worker hours for each industry. These hours were later combined with the hours of nonsupervisory (production) workers from the CES and self-employed and unpaid family workers from the CPS to create revised total hours for each industry.

## **Results**

Previous estimates of supervisory and nonproduction worker average weekly hours used in most industry productivity measures published prior to the completion of this research were held constant at levels derived from the discontinued BLS Employer Expenditures for Employee Compensation (EEEC) survey of 1977 (for manufacturing) or from the 1980 Census of Population (for non-manufacturing industries).

### *Effect on Levels of Supervisory and Nonproduction Worker Average Weekly Hours by Industry*

Using the new method for estimating supervisory and nonproduction worker hours changed the average weekly hours levels of these workers in many industries. Table 2 compares the 1987-2002 mean supervisory (nonproduction) worker average weekly hours on the old and new basis for each of 477 unique industries in this study for which the Bureau maintains output per hour measures.<sup>3</sup>

In general, the new levels of nonproduction worker average weekly hours tend to be higher than the old levels for goods-producing industries. The new levels of supervisory worker average weekly hours tend to be lower than the old levels for service-providing industries, particularly for industries in retail trade and accommodation and food services. Many of the large revisions in supervisory worker average weekly hours also occurred in service-providing industries, in retail trade in particular. Of the 477 industries, the mean supervisory (nonproduction) worker average weekly hours were revised by 10 hours or more in 27 industries. Of those, 25 (93 percent) were in the service-providing industries and 20 industries (74 percent) were in retail trade.

### *Effect on Trends in Supervisory and Nonproduction Worker Hours by Industry*

The revised supervisory and nonproduction worker average weekly hours also affected the *trends* in total hours of supervisory and nonproduction workers for many industries.<sup>4</sup> Table 3 compares the 1987-2002 average annual percent change in

---

<sup>3</sup> The industries included in this study are those for which estimates of nonproduction or supervisory worker hours previously had been based on the 1977 EEEEC survey or the 1980 Census of Population. Industries for which productivity measures were recently developed or that use hours data from an alternate source are excluded from this study.

<sup>4</sup> Changes were expected. Since average weekly hours of these workers were previously assumed to be constant, previous trends in the hours of these workers reflected only their employment trends.

supervisory and nonproduction worker hours using the old and new average weekly hours estimates. Chart 1 shows the distribution of these changes among the industries for which BLS maintains labor productivity measures. Of the 477 industries in this study for which labor productivity measures are maintained, the impact of the new measures on the trend in the hours of these workers was minor (a difference of plus or minus 0.1 percent or less in the average annual change between 1987 and 2002) for 148 industries (31 percent). For 195 other industries (41 percent), the average annual change in supervisory and nonproduction worker hours was revised from ( $\pm$ ) 0.2 to 0.4 percentage points per year. In 134 industries (28 percent) the trend in hours of supervisory and nonproduction workers was revised by ( $\pm$ ) 0.5 percentage points per year or more. In 28 of these industries, the average annual percent change in hours of those workers was revised by one percentage point per year or more. Five of the 28 most affected industries were in the retail trade sector (NAICS 44-45), while five were in the information sector (NAICS 51) and another 11 were in the manufacturing sector (NAICS 31-33).

#### *Concentration of Supervisory and Nonproduction Workers by Industry*

The extent to which changes in supervisory and nonproduction worker hours affect total labor hours depends in part on the concentration of supervisory and nonproduction workers in the industry. Table 4 below shows the 1987-2002 average concentration of supervisory and nonproduction workers by industry, based on CES data. In general, the concentration of nonproduction workers in manufacturing industries tends to be higher than the concentration of supervisory workers in service industries. Of the 22 industries where nonproduction or supervisory workers exceeded 50 percent of all workers, twenty-one were in manufacturing.

#### *Effect on Trends in Total Labor Hours by Industry*

Table 5 below shows the 1987-2002 trend in total hours on a new and old basis, by industry. Because supervisory and nonproduction workers are only a portion of all workers in each industry, trends in total industry hours were less affected than the trends in supervisory or nonproduction worker hours. The average annual percent change in total labor hours for 1987-2002 was revised up or down by 0.2 percentage points or more in 95 of the 477 industries examined. However, changes of 0.5 percentage points per year or more occurred in only 8 industries. The largest revision in total hours growth from 1987 to 2002 was in other electrical equipment and components, NAICS 3359, where average annual hours growth increased by almost 0.9 percentage points. Of the 8 industries where trends in total hours were most impacted, 5 are in the manufacturing sector.

Chart 2 shows the distribution of the revisions to the 1987-2002 average annual percent change in hours that resulted from the adjustment of the supervisory and nonproduction worker average weekly hours series.

## Conclusions

With the construction of new supervisory and nonproduction worker average weekly hours estimates for detailed industries, both the levels and the 1987-2002 trends of these series changed for many industries. These changes affected the levels and trends in total supervisory and nonproduction worker hours, which in turn induced changes over the period in total hours of all workers. Change was expected since the previous estimates were based on the assumption that supervisory and nonproduction worker average weekly hours were constant over time.

The trend in hours of supervisory and nonproduction workers was revised by more than half a percentage point per year in about a third of all the industries examined. However, for many industries the new measures did not have a major effect on the trends in total hours. The 1987-2002 average annual percent change in total labor hours was revised up or down by more than 0.5 percentage points in only 8 industries. The impact of the revisions to supervisory or nonproduction worker average weekly hours on the trends in total hours for an industry depended on a variety of factors, including the magnitude of the revisions to supervisory (nonproduction) worker average weekly hours levels, the concentration of supervisory or nonproduction workers in the industry, and the trends in the CPS-based adjustment ratios.



Table 1. Ratios of supervisory (nonproduction) worker average weekly hours to nonsupervisory (production) worker average weekly hours; selected years and 1987-2002 average							
Description	NAICS Industry	NAICS Industry Reported in CPS	1987	1992	1997	2002	1987-2002 Average
Food manufacturing	311	311	1.01	1.00	1.03	1.03	1.01
Animal food manufacturing	31111	3111, 3112	1.01	1.00	1.00	0.98	1.00
Grain and oilseed milling	3112	3111, 3112	1.01	1.00	1.00	0.98	1.00
Breakfast cereals	311230	3111, 3112	1.01	1.00	1.00	0.98	1.00
Sugar and confectionery products	3113	3113	0.99	1.04	0.95	1.03	1.02
Sugar	31131	3113	0.99	1.04	0.95	1.03	1.02
Nonchocolate confectioneries	311340	3113	0.99	1.04	0.95	1.03	1.02
Fruit and vegetable preserving and special food processing	3114	3114	1.05	1.05	1.13	1.09	1.07
Frozen food	31141	3114	1.05	1.05	1.13	1.09	1.07
Frozen fruits, juices, and vegetables	311411	3114	1.05	1.05	1.13	1.09	1.07
Frozen specialty foods	311412	3114	1.05	1.05	1.13	1.09	1.07
Fruit and vegetable canning, pickling, and preserving	31142	3114	1.05	1.05	1.13	1.09	1.07
Fruit and vegetable canning	311421	3114	1.05	1.05	1.13	1.09	1.07
Specialty canning	311422	3114	1.05	1.05	1.13	1.09	1.07
Dried and dehydrated foods	311423	3114	1.05	1.05	1.13	1.09	1.07
Dairy products	3115	3115	1.01	1.02	1.01	1.10	1.02
Dairy products (except frozen)	31151	3115	1.01	1.02	1.01	1.10	1.02
Fluid milk	311511	3115	1.01	1.02	1.01	1.10	1.02
Ice cream and frozen desserts	311520	3115	1.01	1.02	1.01	1.10	1.02
Animal slaughtering and processing	31161	3116	1.11	1.06	1.07	1.07	1.06
Animal (except poultry) slaughtering	311611	3116	1.11	1.06	1.07	1.07	1.06
Poultry processing	311615	3116	1.11	1.06	1.07	1.07	1.06
Seafood product preparation and packaging	31171	3117, 3119	1.04	1.04	1.09	1.05	1.05
Bakeries and tortilla manufacturing	3118	311	1.01	1.00	1.03	1.03	1.01
Bread and bakery products	31181	311	1.01	1.00	1.03	1.03	1.01
Retail bakeries	311811	311811	0.89	0.88	0.93	0.88	0.88
Other food products	3119	3117, 3119	1.04	1.04	1.09	1.05	1.05
Snack foods	31191	3117, 3119	1.04	1.04	1.09	1.05	1.05
Beverages and tobacco products	312	312	1.06	1.07	1.05	1.02	1.05
Beverages	3121	3121	1.08	1.09	1.08	1.03	1.07
Soft drinks and ice	31211	3121	1.08	1.09	1.08	1.03	1.07
Soft drinks	312111	3121	1.08	1.09	1.08	1.03	1.07
Tobacco and tobacco products	3122	312	1.06	1.07	1.05	1.02	1.05
Textile mills	313	313, 315	1.05	1.08	1.06	1.05	1.06
Fiber, yarn, and thread mills	31311	313, 315	1.05	1.08	1.06	1.05	1.06
Fabric mills	3132	313, 315	1.05	1.08	1.06	1.05	1.06
Broadwoven fabric mills	313210	3132 exc 31324	0.99	1.03	1.02	1.02	1.02
Textile and fabric finishing mills	3133	313, 315	1.05	1.08	1.06	1.05	1.06
Broadwoven fabric finishing mills	313311	313, 315	1.05	1.08	1.06	1.05	1.06
Textile product mills	314	314	1.04	1.06	1.06	1.03	1.05
Textile furnishings mills	3141	314	1.04	1.06	1.06	1.03	1.05
Carpet and rug mills	314110	314	1.04	1.06	1.06	1.03	1.05
Curtain and linen mills	31412	314 exc 31411	1.05	1.08	1.06	1.02	1.06
Other textile product mills	3149	314 exc 31411	1.05	1.08	1.06	1.02	1.06
Textile bag and canvas mills	31491	314 exc 31411	1.05	1.08	1.06	1.02	1.06
All other textile products	31499	314 exc 31411	1.05	1.08	1.06	1.02	1.06
Apparel	315	313, 315	1.05	1.08	1.06	1.05	1.06
Apparel knitting mills	3151	313, 315	1.05	1.08	1.06	1.05	1.06
Hosiery and sock mills	31511	313, 315	1.05	1.08	1.06	1.05	1.06
Sheer hosiery mills	315111	313, 315	1.05	1.08	1.06	1.05	1.06
Other hosiery and sock mills	315119	313, 315	1.05	1.08	1.06	1.05	1.06
Other apparel knitting mills	31519	313, 315	1.05	1.08	1.06	1.05	1.06
Cut and sew apparel	3152	3152	1.07	1.11	1.08	1.08	1.09
Cut and sew apparel contractors	31521	3152	1.07	1.11	1.08	1.08	1.09
Men's and boys' cut and sew apparel contractors	315211	3152	1.07	1.11	1.08	1.08	1.09
Women's, girls', and infants' cut and sew apparel contractors	315212	3152	1.07	1.11	1.08	1.08	1.09
Men's and boys' cut and sew apparel	31522	3152	1.07	1.11	1.08	1.08	1.09
Women's and girls' cut and sew apparel	31523	3152	1.07	1.11	1.08	1.08	1.09
Other cut and sew apparel	31529	3152	1.07	1.11	1.08	1.08	1.09

<b>Table 1. Ratios of supervisory (nonproduction) worker average weekly hours to nonsupervisory (production) worker average weekly hours; selected years and 1987-2002 average</b>							
<b>Description</b>	<b>NAICS Industry</b>	<b>NAICS Industry Reported in CPS</b>	<b>1987</b>	<b>1992</b>	<b>1997</b>	<b>2002</b>	<b>1987-2002 Average</b>
Apparel accessories and other apparel ma	31599	313, 315	1.05	1.08	1.06	1.05	1.06
Leather and allied products	316	316	1.05	1.06	1.13	0.99	1.06
Leather and allied product manufacturing	316110	316	1.05	1.06	1.13	0.99	1.06
Footwear manufacturing	31621	316	1.05	1.06	1.13	0.99	1.06
Other leather and allied product manufact	31699	316	1.05	1.06	1.13	0.99	1.06
Wood products	321	321	1.05	1.08	1.04	1.04	1.06
Sawmills and wood preservation	32111	3211	1.03	1.08	1.03	1.06	1.06
Veneer, plywood, and engineered wood p	32121	321	1.05	1.08	1.04	1.04	1.06
Reconstituted wood products	321219	321	1.05	1.08	1.04	1.04	1.06
Other wood products	3219	321	1.05	1.08	1.04	1.04	1.06
Millwork	32191	3219 exc 321991, 321992	1.03	1.04	1.00	1.02	1.03
Wood windows and doors	321911	3219 exc 321991, 321992	1.03	1.04	1.00	1.02	1.03
Wood containers and pallets	321920	3219 exc 321991, 321992	1.03	1.04	1.00	1.02	1.03
All other wood products	32199	321	1.05	1.08	1.04	1.04	1.06
Manufactured homes (mobile homes)	321991	321	1.05	1.08	1.04	1.04	1.06
Paper and paper products	322	322	0.99	0.98	0.97	1.03	1.00
Pulp, paper, and paperboard mills	3221	3221	0.98	0.98	0.96	1.03	0.99
Paperboard mills	322130	3221	0.98	0.98	0.96	1.03	0.99
Converted paper products	3222	322	0.99	0.98	0.97	1.03	1.00
Paperboard containers	32221	32221	0.96	0.94	0.96	1.01	0.98
Corrugated and solid fiber boxes	322211	32221	0.96	0.94	0.96	1.01	0.98
Folding paperboard boxes	322212	32221	0.96	0.94	0.96	1.01	0.98
Paper bags and coated and treated paper	32222	32222, 32223, 32229	1.02	1.01	0.99	1.03	1.01
Stationery products	32223	32222, 32223, 32229	1.02	1.01	0.99	1.03	1.01
Other converted paper products	32229	32222, 32223, 32229	1.02	1.01	0.99	1.03	1.01
Printing and related support activities	3231	3231	0.98	1.01	1.01	1.03	1.00
Printing	32311	3231	0.98	1.01	1.01	1.03	1.00
Commercial lithographic printing	323110	3231	0.98	1.01	1.01	1.03	1.00
Commercial gravure printing	323111	3231	0.98	1.01	1.01	1.03	1.00
Commercial flexographic printing	323112	3231	0.98	1.01	1.01	1.03	1.00
Commercial screen printing	323113	3231	0.98	1.01	1.01	1.03	1.00
Quick printing	323114	3231	0.98	1.01	1.01	1.03	1.00
Manifold business form printing	323116	3231	0.98	1.01	1.01	1.03	1.00
Support activities for printing	32312	3231	0.98	1.01	1.01	1.03	1.00
Petroleum and coal products	3241	324	0.98	0.96	0.98	0.96	0.98
Petroleum refineries	324110	32411	0.98	0.96	0.97	0.96	0.98
Chemicals	325	325	1.00	1.01	1.03	1.03	1.02
Basic chemicals	3251	3251, 3259	0.98	0.97	0.99	0.99	0.99
Synthetic dyes and pigments	32513	3251, 3259	0.98	0.97	0.99	0.99	0.99
Other basic inorganic chemicals	32518	3251, 3259	0.98	0.97	0.99	0.99	0.99
Other basic organic chemicals	32519	3251, 3259	0.98	0.97	0.99	0.99	0.99
Resin, synthetic rubber, and artificial synt	3252	325	1.00	1.01	1.03	1.03	1.02
Resin and synthetic rubber	32521	325	1.00	1.01	1.03	1.03	1.02
Plastics material and resin	325211	325	1.00	1.01	1.03	1.03	1.02
Synthetic rubber	325212	325	1.00	1.01	1.03	1.03	1.02
Artificial and synthetic fibers and filamer	32522	325	1.00	1.01	1.03	1.03	1.02
Noncellulosic organic fibers	325222	325	1.00	1.01	1.03	1.03	1.02
Pesticides, fertilizers, and other agricultu	3253	325	1.00	1.01	1.03	1.03	1.02
Pharmaceuticals and medicine	32541	3254	1.04	1.06	1.06	1.07	1.06
Pharmaceutical preparations	325412	3254	1.04	1.06	1.06	1.07	1.06
Paint, coatings, and adhesives	3255	325	1.00	1.01	1.03	1.03	1.02
Paint and coatings	325510	325	1.00	1.01	1.03	1.03	1.02
Soaps, cleaning compounds, and toilet pr	3256	3256	1.01	1.03	1.08	1.03	1.03

<b>Table 1. Ratios of supervisory (nonproduction) worker average weekly hours to nonsupervisory (production) worker average weekly hours; selected years and 1987-2002 average</b>							
<b>Description</b>	<b>NAICS Industry</b>	<b>NAICS Industry Reported in CPS</b>	<b>1987</b>	<b>1992</b>	<b>1997</b>	<b>2002</b>	<b>1987-2002 Average</b>
Soaps and cleaning compounds	32561	3256	1.01	1.03	1.08	1.03	1.03
Soaps and other detergents	325611	3256	1.01	1.03	1.08	1.03	1.03
Toilet preparations	325620	3256	1.01	1.03	1.08	1.03	1.03
Other chemical products and preparations	3259	3251, 3259	0.98	0.97	0.99	0.99	0.99
Plastics and rubber products	326	326	1.03	1.03	1.04	1.04	1.04
Plastics products	3261	3261	1.02	1.03	1.05	1.04	1.04
Plastics packaging materials and unlaminated plastics	32611	3261	1.02	1.03	1.05	1.04	1.04
Unlaminated plastics film and sheets (except glass-reinforced)	326113	3261	1.02	1.03	1.05	1.04	1.04
Plastics pipes, pipe fittings, and unlaminated plastics profile shapes	32612	3261	1.02	1.03	1.05	1.04	1.04
Unlaminated plastics profile shapes	326121	3261	1.02	1.03	1.05	1.04	1.04
Plastics pipes and pipe fittings	326122	3261	1.02	1.03	1.05	1.04	1.04
Other plastics products	32619	3261	1.02	1.03	1.05	1.04	1.04
Rubber products	3262	326	1.03	1.03	1.04	1.04	1.04
Tires	32621	32621	1.05	1.02	0.98	1.04	1.03
Rubber and plastics hoses and belting	326220	32622, 32629	1.02	1.03	1.02	1.04	1.02
Other rubber products	32629	32622, 32629	1.02	1.03	1.02	1.04	1.02
Rubber products for mechanical use	326291	32622, 32629	1.02	1.03	1.02	1.04	1.02
All other rubber products	326299	32622, 32629	1.02	1.03	1.02	1.04	1.02
Nonmetallic mineral products	327	327	1.03	1.02	1.02	1.02	1.03
Clay products and refractories	3271	327	1.03	1.02	1.02	1.02	1.03
Pottery, ceramics, and plumbing fixtures	32711	327	1.03	1.02	1.02	1.02	1.03
Clay building materials and refractories	32712	327	1.03	1.02	1.02	1.02	1.03
Glass and glass products	32721	3272	1.05	1.00	0.97	1.02	1.03
Flat glass	327211	3272	1.05	1.00	0.97	1.02	1.03
Other pressed and blown glass and glassware	327212	3272	1.05	1.00	0.97	1.02	1.03
Glass containers	327213	3272	1.05	1.00	0.97	1.02	1.03
Glass products made of purchased glass	327215	3272	1.05	1.00	0.97	1.02	1.03
Cement and concrete products	3273	3273, 3274	1.01	1.05	1.08	1.04	1.03
Ready-mix concrete	327320	3273, 3274	1.01	1.05	1.08	1.04	1.03
Lime and gypsum products	3274	3273, 3274	1.01	1.05	1.08	1.04	1.03
Other nonmetallic mineral products	3279	327	1.03	1.02	1.02	1.02	1.03
Primary metals	331	331	0.99	0.99	1.00	1.00	0.99
Iron and steel mills and ferroalloy production	33111	3311, 3312	0.98	0.98	1.01	1.00	0.99
Steel products from purchased steel	3312	3311, 3312	0.98	0.98	1.01	1.00	0.99
Iron and steel pipes and tubes from purchased steel	331210	3311, 3312	0.98	0.98	1.01	1.00	0.99
Rolling and drawing of purchased steel	33122	3311, 3312	0.98	0.98	1.01	1.00	0.99
Rolled steel shapes	331221	3311, 3312	0.98	0.98	1.01	1.00	0.99
Alumina and aluminum production and primary metal	33131	3313	1.02	1.02	0.96	0.99	1.00
Aluminum sheets, plates, and foil	331315	3313	1.02	1.02	0.96	0.99	1.00
Nonferrous metal (except aluminum) primary metal	3314	331	0.99	0.99	1.00	1.00	0.99
Nonferrous metal (except aluminum) secondary metal	33141	331	0.99	0.99	1.00	1.00	0.99
Copper rolling, drawing, extruding, and annealing	33142	331	0.99	0.99	1.00	1.00	0.99
Nonferrous metal (except copper and aluminum) secondary metal	33149	331	0.99	0.99	1.00	1.00	0.99
Foundries	3315	3315	0.96	0.99	0.97	0.99	0.98
Ferrous metal foundries	33151	3315	0.96	0.99	0.97	0.99	0.98
Iron foundries	331511	3315	0.96	0.99	0.97	0.99	0.98
Nonferrous metal foundries	33152	3315	0.96	0.99	0.97	0.99	0.98
Fabricated metal products	332	332	0.99	1.00	0.98	1.01	1.00
Forging and stamping	33211	332	0.99	1.00	0.98	1.01	1.00
Iron and steel forging	332111	332	0.99	1.00	0.98	1.01	1.00
Metal stamping	332116	332	0.99	1.00	0.98	1.01	1.00
Cutlery and handtools	33221	332	0.99	1.00	0.98	1.01	1.00
Hand and edge tools	332212	332	0.99	1.00	0.98	1.01	1.00
Architectural and structural metals	3323	3323, 3324	0.99	1.00	0.99	1.00	1.00
Plate work and fabricated structural products	33231	3323, 3324	0.99	1.00	0.99	1.00	1.00
Prefabricated metal building and component	332311	3323, 3324	0.99	1.00	0.99	1.00	1.00
Fabricated structural metals	332312	3323, 3324	0.99	1.00	0.99	1.00	1.00
Plate work	332313	3323, 3324	0.99	1.00	0.99	1.00	1.00
Ornamental and architectural metal products	33232	3323, 3324	0.99	1.00	0.99	1.00	1.00

Table 1. Ratios of supervisory (nonproduction) worker average weekly hours to nonsupervisory (production) worker average weekly hours; selected years and 1987-2002 average							
Description	NAICS Industry	NAICS Industry Reported in CPS	1987	1992	1997	2002	1987-2002 Average
Metal windows and doors	332321	3323, 3324	0.99	1.00	0.99	1.00	1.00
Sheet metal work	332322	3323, 3324	0.99	1.00	0.99	1.00	1.00
Ornamental and architectural metal work	332323	3323, 3324	0.99	1.00	0.99	1.00	1.00
Boilers, tanks, and shipping containers	3324	3323, 3324	0.99	1.00	0.99	1.00	1.00
Hardware	332510	3325, 3326, 3329 exc 332992, 332993, 332994, 332995	1.02	1.03	1.01	1.03	1.03
Spring and wire products	33261	3325, 3326, 3329 exc 332992, 332993, 332994, 332995	1.02	1.03	1.01	1.03	1.03
Machine shops; turned products; and screw	3327	3327	0.98	0.99	0.98	1.02	0.99
Machine shops	332710	3327	0.98	0.99	0.98	1.02	0.99
Turned products and screws, nuts, and bolts	33272	3327	0.98	0.99	0.98	1.02	0.99
Precision turned products	332721	3327	0.98	0.99	0.98	1.02	0.99
Bolts, nuts, screws, rivets, and washers	332722	3327	0.98	0.99	0.98	1.02	0.99
Coating, engraving, heat treating, and allied	33281	3328	0.98	0.98	0.95	0.98	0.99
Electroplating, plating, polishing, anodizing	332813	3328	0.98	0.98	0.95	0.98	0.99
Other fabricated metal products	3329	332	0.99	1.00	0.98	1.01	1.00
Metal valves	33291	3325, 3326, 3329 exc 332992, 332993, 332994, 332995	1.02	1.03	1.01	1.03	1.03
Fluid power valves and hose fittings	332912	3325, 3326, 3329 exc 332992, 332993, 332994, 332995	1.02	1.03	1.01	1.03	1.03
Plumbing fixture fittings and trim	332913	3325, 3326, 3329 exc 332992, 332993, 332994, 332995	1.02	1.03	1.01	1.03	1.03
All other fabricated metal products	33299	332	0.99	1.00	0.98	1.01	1.00
Ball and roller bearings	332991	3325, 3326, 3329 exc 332992, 332993, 332994, 332995	1.02	1.03	1.01	1.03	1.03
Machinery	333	333	1.00	1.03	1.00	1.03	1.02
Agriculture, construction, and mining machinery	3331	333	1.00	1.03	1.00	1.03	1.02
Agricultural implements	33311	33311	0.97	1.05	0.96	1.00	1.00
Farm machinery and equipment	333111	33311	0.97	1.05	0.96	1.00	1.00
Lawn and garden tractors and home lawn mowers	333112	33311	0.97	1.05	0.96	1.00	1.00
Construction machinery	333120	33312, 33313	1.02	1.02	1.00	1.04	1.02
Mining and oil and gas field machinery	33313	33312, 33313	1.02	1.02	1.00	1.04	1.02
Industrial machinery	3332	3332, 3334, 3339	1.01	1.02	1.01	1.04	1.02
Semiconductor machinery	333295	3332, 3334, 3339	1.01	1.02	1.01	1.04	1.02
Commercial and service industry machinery	33331	3333	1.01	1.03	1.03	1.04	1.04
Office machinery	333313	3333	1.01	1.03	1.03	1.04	1.04
Photographic and photocopying equipment	333315	3333	1.01	1.03	1.03	1.04	1.04
HVAC and commercial refrigeration equipment	33341	3332, 3334, 3339	1.01	1.02	1.01	1.04	1.02
Air-conditioning and warm air heating equipment	333415	3332, 3334, 3339	1.01	1.02	1.01	1.04	1.02
Metalworking machinery	33351	3335	0.99	1.02	0.98	1.03	1.00
Industrial molds	333511	3335	0.99	1.02	0.98	1.03	1.00
Special dies and tools, die sets, jigs, and fixtures	333514	3335	0.99	1.02	0.98	1.03	1.00
Turbine and power transmission equipment	33361	333	1.00	1.03	1.00	1.03	1.02
Turbines and turbine generator set units	333611	333	1.00	1.03	1.00	1.03	1.02
Other general purpose machinery	3339	3332, 3334, 3339	1.01	1.02	1.01	1.04	1.02
Pumps and compressors	33391	3332, 3334, 3339	1.01	1.02	1.01	1.04	1.02
Air and gas compressors	333912	3332, 3334, 3339	1.01	1.02	1.01	1.04	1.02

Table 1. Ratios of supervisory (nonproduction) worker average weekly hours to nonsupervisory (production) worker average weekly hours; selected years and 1987-2002 average							
Description	NAICS Industry	NAICS Industry Reported in CPS	1987	1992	1997	2002	1987-2002 Average
Material handling equipment	33392	3332, 3334, 3339	1.01	1.02	1.01	1.04	1.02
Conveyor and conveying equipment	333922	3332, 3334, 3339	1.01	1.02	1.01	1.04	1.02
Overhead traveling cranes, hoists, and monorails	333923	3332, 3334, 3339	1.01	1.02	1.01	1.04	1.02
All other general purpose machinery	33399	3332, 3334, 3339	1.01	1.02	1.01	1.04	1.02
Computer and electronic products	334	334	1.04	1.05	1.06	1.06	1.06
Computer and peripheral equipment	33411	3341	1.05	1.06	1.08	1.08	1.07
Electronic computers	334111	3341	1.05	1.06	1.08	1.08	1.07
Other computer peripheral equipment	334119	3341	1.05	1.06	1.08	1.08	1.07
Communications equipment	3342	3342, 3343	1.01	1.03	1.05	1.05	1.03
Telephone apparatus manufacturing	334210	3342, 3343	1.01	1.03	1.05	1.05	1.03
Radio and television broadcasting and wireless communications equipment	334220	3342, 3343	1.01	1.03	1.05	1.05	1.03
Audio and video equipment manufacturing	334310	3342, 3343	1.01	1.03	1.05	1.05	1.03
Semiconductors and electronic components	33441	3344, 3346	1.04	1.05	1.06	1.06	1.06
Electron tubes	334411	3344, 3346	1.04	1.05	1.06	1.06	1.06
Bare printed circuit boards	334412	3344, 3346	1.04	1.05	1.06	1.06	1.06
Semiconductors and related devices	334413	3344, 3346	1.04	1.05	1.06	1.06	1.06
Electronic capacitors	334414	3344, 3346	1.04	1.05	1.06	1.06	1.06
Electronic connectors	334417	3344, 3346	1.04	1.05	1.06	1.06	1.06
Printed circuit assemblies (electronic assemblies)	334418	3344, 3346	1.04	1.05	1.06	1.06	1.06
Electronic instruments	33451	3345	1.02	1.03	1.05	1.03	1.04
Electromedical and electrotherapeutic appliances	334510	3345	1.02	1.03	1.05	1.03	1.04
Search, detection, navigation, guidance, and ranging instruments	334511	3345	1.02	1.03	1.05	1.03	1.04
Automatic environmental controls for residential and commercial buildings	334512	3345	1.02	1.03	1.05	1.03	1.04
Instruments and related products for measuring and testing electrical, electronic, and magnetic quantities	334513	3345	1.02	1.03	1.05	1.03	1.04
Instruments for measuring and testing electrical quantities	334515	3345	1.02	1.03	1.05	1.03	1.04
Irradiation apparatuses	334517	3345	1.02	1.03	1.05	1.03	1.04
Magnetic media manufacturing and reproduction	33461	3344, 3346	1.04	1.05	1.06	1.06	1.06
Electrical equipment and appliances	335	335	1.00	1.02	1.02	1.03	1.02
Electric lighting equipment	3351	3351, 3353, 3359	1.00	1.01	1.02	1.03	1.02
Electric lamp bulb and part manufacturing	335110	3351, 3353, 3359	1.00	1.01	1.02	1.03	1.02
Lighting fixtures	33512	3351, 3353, 3359	1.00	1.01	1.02	1.03	1.02
Household appliances	3352	3352	1.01	1.03	1.01	1.05	1.04
Small electrical appliances	33521	3352	1.01	1.03	1.01	1.05	1.04
Electric housewares and household fans	335211	3352	1.01	1.03	1.01	1.05	1.04
Major appliances	33522	3352	1.01	1.03	1.01	1.05	1.04
Electrical equipment	33531	3351, 3353, 3359	1.00	1.01	1.02	1.03	1.02
Power, distribution, and specialty transformers	335311	3351, 3353, 3359	1.00	1.01	1.02	1.03	1.02
Motors and generators	335312	3351, 3353, 3359	1.00	1.01	1.02	1.03	1.02
Switchgear and switchboard apparatuses	335313	3351, 3353, 3359	1.00	1.01	1.02	1.03	1.02
Relays and industrial controls	335314	3351, 3353, 3359	1.00	1.01	1.02	1.03	1.02
Other electrical equipment and components	3359	3351, 3353, 3359	1.00	1.01	1.02	1.03	1.02
Batteries	33591	3351, 3353, 3359	1.00	1.01	1.02	1.03	1.02
Storage batteries	335911	3351, 3353, 3359	1.00	1.01	1.02	1.03	1.02
Communication and energy wire and cable	33592	3351, 3353, 3359	1.00	1.01	1.02	1.03	1.02
Fiber optic cables	335921	3351, 3353, 3359	1.00	1.01	1.02	1.03	1.02
Other communication and energy wires	335929	3351, 3353, 3359	1.00	1.01	1.02	1.03	1.02
Wiring devices	33593	3351, 3353, 3359	1.00	1.01	1.02	1.03	1.02
Current-carrying wiring devices	335931	3351, 3353, 3359	1.00	1.01	1.02	1.03	1.02
Noncurrent-carrying wiring devices	335932	3351, 3353, 3359	1.00	1.01	1.02	1.03	1.02
All other electrical equipment and components	33599	3351, 3353, 3359	1.00	1.01	1.02	1.03	1.02
Transportation equipment	336	336	0.99	1.01	1.00	1.02	1.01
Motor vehicles	3361	3361, 3362, 3363	1.00	1.03	1.01	1.04	1.02
Automobiles and light duty motor vehicles	33611	3361, 3362, 3363	1.00	1.03	1.01	1.04	1.02
Automobiles	336111	3361, 3362, 3363	1.00	1.03	1.01	1.04	1.02
Light trucks and utility vehicles	336112	3361, 3362, 3363	1.00	1.03	1.01	1.04	1.02
Heavy duty truck manufacturing	336120	3361, 3362, 3363	1.00	1.03	1.01	1.04	1.02
Motor vehicle bodies and trailers	33621	3361, 3362, 3363	1.00	1.03	1.01	1.04	1.02
Motor vehicle bodies	336211	3361, 3362, 3363	1.00	1.03	1.01	1.04	1.02
Truck trailers	336212	3361, 3362, 3363	1.00	1.03	1.01	1.04	1.02

Table 1. Ratios of supervisory (nonproduction) worker average weekly hours to nonsupervisory (production) worker average weekly hours; selected years and 1987-2002 average							
Description	NAICS Industry	NAICS Industry Reported in CPS	1987	1992	1997	2002	1987-2002 Average
Motor homes	336213	3361, 3362, 3363	1.00	1.03	1.01	1.04	1.02
Travel trailers and campers	336214	3361, 3362, 3363	1.00	1.03	1.01	1.04	1.02
Motor vehicle parts	3363	3361, 3362, 3363	1.00	1.03	1.01	1.04	1.02
Motor vehicle gasoline engines and engines	33631	3361, 3362, 3363	1.00	1.03	1.01	1.04	1.02
Carburetors, pistons, piston rings, and valves	336311	3361, 3362, 3363	1.00	1.03	1.01	1.04	1.02
Gasoline engines and engine parts	336312	3361, 3362, 3363	1.00	1.03	1.01	1.04	1.02
Motor vehicle electrical and electronic equipment	33632	3361, 3362, 3363	1.00	1.03	1.01	1.04	1.02
Vehicular lighting equipment	336321	3361, 3362, 3363	1.00	1.03	1.01	1.04	1.02
Other motor vehicle electrical and electronic equipment	336322	3361, 3362, 3363	1.00	1.03	1.01	1.04	1.02
Motor vehicle steering and suspension components	336330	3361, 3362, 3363	1.00	1.03	1.01	1.04	1.02
Motor vehicle brake system manufacturing	336340	3361, 3362, 3363	1.00	1.03	1.01	1.04	1.02
Motor vehicle transmission and power train	336350	3361, 3362, 3363	1.00	1.03	1.01	1.04	1.02
Motor vehicle seating and interior trim materials	336360	3361, 3362, 3363	1.00	1.03	1.01	1.04	1.02
Motor vehicle metal stamping	336370	3361, 3362, 3363	1.00	1.03	1.01	1.04	1.02
Other motor vehicle parts	33639	3361, 3362, 3363	1.00	1.03	1.01	1.04	1.02
All other motor vehicle parts	336399	3361, 3362, 3363	1.00	1.03	1.01	1.04	1.02
Aerospace products and parts	33641	336	0.99	1.01	1.00	1.02	1.01
Aircraft	336411	336411 - 336413	0.98	0.99	0.97	1.01	0.99
Aircraft engines and engine parts	336412	336411 - 336413	0.98	0.99	0.97	1.01	0.99
Other aircraft parts and auxiliary equipment	336413	336411 - 336413	0.98	0.99	0.97	1.01	0.99
Railroad rolling stock manufacturing	336510	336	0.99	1.01	1.00	1.02	1.01
Ship and boat building	33661	3366	1.03	1.00	0.99	1.02	1.02
Ship building and repairing	336611	3366	1.03	1.00	0.99	1.02	1.02
Boat building	336612	3366	1.03	1.00	0.99	1.02	1.02
Other transportation equipment	33699	336	0.99	1.01	1.00	1.02	1.01
Furniture and related products	337	337	1.06	1.06	1.04	1.03	1.04
Household and institutional furniture and fixtures	3371	337	1.06	1.06	1.04	1.03	1.04
Wood kitchen cabinets and countertops	337110	337	1.06	1.06	1.04	1.03	1.04
Household and institutional furniture	33712	337	1.06	1.06	1.04	1.03	1.04
Upholstered household furniture	337121	337	1.06	1.06	1.04	1.03	1.04
Nonupholstered wood household furniture	337122	337	1.06	1.06	1.04	1.03	1.04
Office furniture (including fixtures)	33721	337	1.06	1.06	1.04	1.03	1.04
Office furniture (except wood)	337214	337	1.06	1.06	1.04	1.03	1.04
Showcases, partitions, shelving, and lockers	337215	337	1.06	1.06	1.04	1.03	1.04
Other furniture related products	3379	337	1.06	1.06	1.04	1.03	1.04
Miscellaneous manufacturing	339	339	1.01	1.03	1.04	1.05	1.03
Medical equipment and supplies	33911	3391	1.01	1.03	1.06	1.08	1.04
Surgical and medical instruments	339112	3391	1.01	1.03	1.06	1.08	1.04
Surgical appliances and supplies	339113	3391	1.01	1.03	1.06	1.08	1.04
Dental laboratories	339116	3391	1.01	1.03	1.06	1.08	1.04
Other miscellaneous manufacturing	3399	339	1.01	1.03	1.04	1.05	1.03
Jewelry and silverware	33991	3399 exc 33992, 33993	1.01	1.01	1.03	1.02	1.02
Sporting and athletic goods	339920	33992, 33993	1.03	1.06	1.03	1.07	1.04
Dolls, toys, and games	33993	33992, 33993	1.03	1.06	1.03	1.07	1.04
Office supplies (except paper)	33994	3399 exc 33992, 33993	1.01	1.01	1.03	1.02	1.02
Signs	339950	3399 exc 33992, 33993	1.01	1.01	1.03	1.02	1.02
All other miscellaneous manufacturing	33999	3399 exc 33992, 33993	1.01	1.01	1.03	1.02	1.02
Durable goods	423	423	1.07	1.06	1.07	1.06	1.06
Motor vehicles and parts	4231	4231	1.12	1.10	1.10	1.11	1.09
Furniture and furnishings	4232	4232	1.07	1.12	1.10	1.08	1.09
Lumber and construction supplies	4233	4233	1.02	1.02	1.06	1.01	1.03
Commercial equipment	4234	4234	1.09	1.07	1.07	1.08	1.09
Metals and minerals	4235	423	1.07	1.06	1.07	1.06	1.06
Electrical and electronic goods	4236	4236	1.07	1.05	1.08	1.06	1.07
Hardware and plumbing	4237	4237	1.01	1.01	1.04	1.03	1.02

Table 1. Ratios of supervisory (nonproduction) worker average weekly hours to nonsupervisory (production) worker average weekly hours; selected years and 1987-2002 average							
Description	NAICS Industry	NAICS Industry Reported in CPS	1987	1992	1997	2002	1987-2002 Average
Machinery and supplies	4238	4238	1.04	1.03	1.03	1.03	1.03
Miscellaneous durable goods	4239	423	1.07	1.06	1.07	1.06	1.06
Nondurable Goods	424	424	1.09	1.08	1.09	1.08	1.08
Paper and paper products	4241	4241	1.00	0.94	0.96	1.05	0.99
Druggists' goods	424210	4242, 4246	1.08	1.10	1.07	1.08	1.08
Apparel and piece goods	4243	4243	1.20	1.24	1.23	1.21	1.22
Grocery and related products	4244	4244	1.08	1.06	1.11	1.09	1.07
Farm product raw materials	4245	4245	1.23	1.13	1.02	1.04	1.12
Chemicals	4246	4242, 4246	1.08	1.10	1.07	1.08	1.08
Petroleum	4247	4247	1.08	1.08	1.06	1.06	1.09
Alcoholic beverages	4248	4248	1.05	1.12	1.03	1.12	1.04
Miscellaneous nondurable goods	4249	424	1.09	1.08	1.09	1.08	1.08
Wholesale electronic markets and agents	4251	part 42	1.03	1.03	1.01	0.97	1.00
Business to business electronic markets	425110	part 42	1.03	1.03	1.01	0.97	1.00
Wholesale trade agents and brokers	425120	part 42	1.03	1.03	1.01	0.97	1.00
Motor vehicle and parts dealers	441	441	1.14	1.09	1.16	1.14	1.13
Automobile dealers	4411	4411	1.14	1.09	1.15	1.13	1.14
New car dealers	441110	4411	1.14	1.09	1.15	1.13	1.14
Used car dealers	441120	4411	1.14	1.09	1.15	1.13	1.14
Other motor vehicle dealers	4412	4412	1.11	0.97	1.14	1.06	1.04
Recreational vehicle dealers	441210	4412	1.11	0.97	1.14	1.06	1.04
Motorcycle, boat, and other motor vehicle	44122	4412	1.11	0.97	1.14	1.06	1.04
Automotive parts, accessories, and tire stores	4413	4413	1.11	1.09	1.18	1.17	1.11
Automotive parts and accessories stores	441310	4413	1.11	1.09	1.18	1.17	1.11
Tire dealers	441320	4413	1.11	1.09	1.18	1.17	1.11
Furniture and home furnishings stores	442	442	1.21	1.22	1.25	1.18	1.21
Furniture stores	442110	442	1.21	1.22	1.25	1.18	1.21
Home furnishings stores	4422	442	1.21	1.22	1.25	1.18	1.21
Floor covering stores	442210	442	1.21	1.22	1.25	1.18	1.21
Other home furnishings stores	44229	442	1.21	1.22	1.25	1.18	1.21
Electronics and appliance stores	4431	443, 451	1.26	1.23	1.27	1.29	1.26
Appliance, television, and other electronics stores	44311	443, 451	1.26	1.23	1.27	1.29	1.26
Household appliance stores	443111	443, 451	1.26	1.23	1.27	1.29	1.26
Radio, television, and other electronics stores	443112	443112, 44312	1.21	1.17	1.18	1.19	1.18
Building material and garden supply stores	444	444	1.13	1.16	1.15	1.14	1.15
Building material and supplies dealers	4441	444	1.13	1.16	1.15	1.14	1.15
Home centers	444110	4441 exc 44413	1.10	1.14	1.12	1.11	1.12
Paint and wallpaper stores	444120	4441 exc 44413	1.10	1.14	1.12	1.11	1.12
Hardware stores	444130	44413	1.23	1.27	1.32	1.27	1.25
Other building material dealers	444190	4441 exc 44413	1.10	1.14	1.12	1.11	1.12
Lawn and garden equipment and supplies stores	4442	4442	1.13	1.13	1.13	1.14	1.14
Outdoor power equipment stores	444210	4442	1.13	1.13	1.13	1.14	1.14
Nursery, garden center, and farm supply stores	444220	4442	1.13	1.13	1.13	1.14	1.14
Food and beverage stores	445	445	1.35	1.38	1.34	1.30	1.35
Grocery stores	4451	4451	1.34	1.36	1.35	1.30	1.34
Supermarkets and other grocery (except convenience stores)	445110	4451	1.34	1.36	1.35	1.30	1.34
Convenience stores	445120	4451	1.34	1.36	1.35	1.30	1.34
Specialty food stores	4452	4452	1.29	1.34	1.19	1.23	1.27
Fruit and vegetable markets	445230	4452	1.29	1.34	1.19	1.23	1.27
Other specialty food stores	44529	4452	1.29	1.34	1.19	1.23	1.27
Beer, wine, and liquor stores	445310	4453	1.56	1.70	1.41	1.32	1.46
Health and personal care stores	4461	446	1.34	1.32	1.24	1.24	1.29
Pharmacies and drug stores	446110	4461	1.33	1.31	1.24	1.23	1.28
Cosmetics, beauty supplies, and perfume stores	446120	446 exc 44611	1.31	1.29	1.26	1.28	1.30
Optical goods stores	446130	446 exc 44611	1.31	1.29	1.26	1.28	1.30
Other health and personal care stores	44619	446 exc 44611	1.31	1.29	1.26	1.28	1.30
Food (health) supplement stores	446191	446 exc 44611	1.31	1.29	1.26	1.28	1.30
All other health and personal care stores	446199	446 exc 44611	1.31	1.29	1.26	1.28	1.30
Gasoline stations	4471	447	1.27	1.25	1.21	1.12	1.21

Table 1. Ratios of supervisory (nonproduction) worker average weekly hours to nonsupervisory (production) worker average weekly hours; selected years and 1987-2002 average							
Description	NAICS Industry	NAICS Industry Reported in CPS	1987	1992	1997	2002	1987-2002 Average
Gasoline stations with convenience stores	447110	447	1.27	1.25	1.21	1.12	1.21
Other gasoline stations	447190	447	1.27	1.25	1.21	1.12	1.21
Clothing and clothing accessories stores	448	448	1.44	1.48	1.46	1.39	1.43
Clothing stores	4481	448 exc 44821, 4483	1.47	1.48	1.48	1.42	1.46
Men's clothing stores	448110	448 exc 44821, 4483	1.47	1.48	1.48	1.42	1.46
Women's clothing stores	448120	448 exc 44821, 4483	1.47	1.48	1.48	1.42	1.46
Children's and infants' clothing stores	448130	448 exc 44821, 4483	1.47	1.48	1.48	1.42	1.46
Family clothing stores	448140	448 exc 44821, 4483	1.47	1.48	1.48	1.42	1.46
Clothing accessories stores	448150	448 exc 44821, 4483	1.47	1.48	1.48	1.42	1.46
Other clothing stores	448190	448 exc 44821, 4483	1.47	1.48	1.48	1.42	1.46
Shoe stores	448210	44821	1.50	1.56	1.47	1.48	1.50
Jewelry, luggage, and leather goods stores	4483	4483	1.29	1.44	1.36	1.25	1.28
Sporting goods, hobby, book, and music stores	451	443, 451	1.26	1.23	1.27	1.29	1.26
Sporting goods, hobby, and musical instrument stores	4511	443, 451	1.26	1.23	1.27	1.29	1.26
Sporting goods stores	451110	44313, 45111, 45112	1.26	1.27	1.43	1.40	1.32
Hobby, toy, and game stores	451120	44313, 45111, 45112	1.26	1.27	1.43	1.40	1.32
Sewing, needlework, and piece goods stores	451130	443, 451	1.26	1.23	1.27	1.29	1.26
Musical instrument and supplies stores	451140	45114, 45122	1.46	1.43	1.42	1.41	1.41
Book, periodical, and music stores	4512	443, 451	1.26	1.23	1.27	1.29	1.26
Book stores and news dealers	45121	45121	1.14	1.14	1.23	1.33	1.20
Prerecorded tape, compact disc, and record stores	451220	45114, 45122	1.46	1.43	1.42	1.41	1.41
General merchandise stores	452	452	1.36	1.33	1.34	1.29	1.33
Department stores	45211	45211	1.38	1.34	1.35	1.29	1.35
Department stores (except discount department stores)	452111	45211	1.38	1.34	1.35	1.29	1.35
Discount department stores	452112	45211	1.38	1.34	1.35	1.29	1.35
Other general merchandise stores	4529	4529	1.26	1.23	1.21	1.24	1.23
Warehouse clubs and supercenters	452910	4529	1.26	1.23	1.21	1.24	1.23
All other general merchandise stores	452990	4529	1.26	1.23	1.21	1.24	1.23
Miscellaneous store retailers	453	453	1.23	1.20	1.20	1.25	1.22
Florists	453110	4531	1.44	1.56	1.38	1.55	1.48
Office supplies, stationery, and gift stores	4532	453	1.23	1.20	1.20	1.25	1.22
Office supplies and stationery stores	453210	45321	1.26	1.20	1.26	1.34	1.26
Gift, novelty, and souvenir stores	453220	45322	1.20	1.16	1.15	1.19	1.18
Used merchandise stores	453310	4533	1.28	1.23	1.22	1.24	1.24
Other miscellaneous store retailers	4539	4539	1.15	1.14	1.12	1.13	1.14
Pet and pet supplies stores	453910	4539	1.15	1.14	1.12	1.13	1.14
Art dealers	453920	4539	1.15	1.14	1.12	1.13	1.14
Manufactured (mobile) home dealers	453930	4539	1.15	1.14	1.12	1.13	1.14
All other miscellaneous store retailers	45399	4539	1.15	1.14	1.12	1.13	1.14
Nonstore retailers	454	454	1.25	1.25	1.28	1.22	1.26
Electronic shopping and mail order houses	45411	454	1.25	1.25	1.28	1.22	1.26
Vending machine operators	454210	454	1.25	1.25	1.28	1.22	1.26
Direct selling establishments	4543	454	1.25	1.25	1.28	1.22	1.26
Fuel dealers	45431	45431	1.07	1.11	1.10	1.07	1.09
Heating oil dealers	454311	45431	1.07	1.11	1.10	1.07	1.09
Other direct selling establishments	454390	45439	1.41	1.45	1.43	1.39	1.47
General freight trucking, long-distance	48412	484	1.05	1.04	1.02	1.02	1.04
Publishing	511	511	1.14	1.20	1.20	1.23	1.20
Newspaper, periodical, book, and directory publishers	5111	511	1.14	1.20	1.20	1.23	1.20
Newspaper publishers	511110	51111	1.26	1.32	1.33	1.30	1.32



<b>Table 1. Ratios of supervisory (nonproduction) worker average weekly hours to nonsupervisory (production) worker average weekly hours; selected years and 1987-2002 average</b>							
<b>Description</b>	<b>NAICS Industry</b>	<b>NAICS Industry Reported in CPS</b>	<b>1987</b>	<b>1992</b>	<b>1997</b>	<b>2002</b>	<b>1987-2002 Average</b>
Periodical publishers	511120	5111 exc 51111	1.04	1.07	1.08	1.10	1.07
Book publishers	511130	5111 exc 51111	1.04	1.07	1.08	1.10	1.07
Database and directory publishers	511140	5111 exc 51111	1.04	1.07	1.08	1.10	1.07
Other publishers	51119	5111 exc 51111	1.04	1.07	1.08	1.10	1.07
Software publishers	511210	511	1.14	1.20	1.20	1.23	1.20
Motion picture and video exhibition	51213	5121	1.28	1.38	1.32	1.21	1.27
Broadcasting, except Internet	515	515, 517	1.09	1.10	1.13	1.11	1.11
Radio and television broadcasting	5151	5151, 5152, 5175	1.11	1.13	1.14	1.11	1.13
Radio broadcasting	51511	5151, 5152, 5175	1.11	1.13	1.14	1.11	1.13
Television broadcasting	515120	5151, 5152, 5175	1.11	1.13	1.14	1.11	1.13
Cable and other subscription programming	515210	5151, 5152, 5175	1.11	1.13	1.14	1.11	1.13
Wired telecommunications carriers	517110	5171	1.08	1.09	1.11	1.10	1.09
Wireless telecommunications carriers (except cellular)	51721	517 exc 5171, 5172	1.09	1.10	1.13	1.12	1.11
Cable and other program distribution	517510	5151, 5152, 5175	1.11	1.13	1.14	1.11	1.13
Commercial banking	522110	521, 52211, 52219	1.16	1.18	1.18	1.15	1.17
Passenger car rental	532111	5321	1.33	1.29	1.22	1.19	1.27
Truck, utility trailer, and rv (recreational vehicle) rental	532120	5321	1.33	1.29	1.22	1.19	1.27
Video tape and disc rental	532230	53223	1.62	1.77	1.67	1.52	1.61
Tax preparation services	541213	5412	1.25	1.21	1.24	1.19	1.23
Advertising agencies	541810	5418	1.25	1.20	1.24	1.16	1.22
Photography studios, portrait	541921	5419 exc 54194	1.42	1.30	1.29	1.22	1.32
Travel agencies	561510	5615	1.26	1.22	1.24	1.19	1.20
Janitorial services	561720	5617 exc 56173	1.44	1.38	1.32	1.30	1.35
Traveler accommodation	7211	7211	1.45	1.38	1.32	1.28	1.35
Hotels (except casino hotels) and motels	721110	7211	1.45	1.38	1.32	1.28	1.35
Casino hotels	721120	7211	1.45	1.38	1.32	1.28	1.35
Other traveler accommodation	72119	7211	1.45	1.38	1.32	1.28	1.35
Bed-and-breakfast inns	721191	7211	1.45	1.38	1.32	1.28	1.35
All other traveler accommodation	721199	7211	1.45	1.38	1.32	1.28	1.35
Food services and drinking places	722	722	1.67	1.64	1.59	1.54	1.61
Full-service restaurants	722110	722 exc 7224	1.67	1.63	1.59	1.54	1.61
Limited-service eating places	72221	722 exc 7224	1.67	1.63	1.59	1.54	1.61
Special food services	7223	722 exc 7224	1.67	1.63	1.59	1.54	1.61
Drinking places (alcoholic beverages)	722410	7224	1.77	1.74	1.69	1.63	1.70
Automotive repair and maintenance	8111	811	1.22	1.19	1.15	1.13	1.18
Hair, nail, and skin care services	81211	812	1.40	1.37	1.34	1.29	1.34
Funeral homes and funeral services	812210	8122	1.48	1.48	1.52	1.47	1.42
Drycleaning and laundry services	8123	8123	1.32	1.35	1.26	1.20	1.26
Coin-operated laundries and drycleaners	812310	8123	1.32	1.35	1.26	1.20	1.26
Drycleaning and laundry services (except coin-operated)	812320	8123	1.32	1.35	1.26	1.20	1.26
Linen and uniform supply	81233	8123	1.32	1.35	1.26	1.20	1.26
Photofinishing	81292	8129	1.36	1.27	1.27	1.21	1.29

**Table 2. Comparison of supervisory (nonproduction) average weekly hours, average 1987-2002**

Description	NAICS	1987-2002 Average		Difference
		Old	New	New - Old
Food manufacturing	311	39.2	40.0	0.7
Animal food manufacturing	31111	39.2	46.5	7.3
Grain and oilseed milling	3112	39.2	44.9	5.7
Breakfast cereals	311230	39.2	47.1	7.9
Sugar and confectionery products	3113	39.2	37.3	-1.9
Sugar	31131	39.2	37.4	-1.8
Nonchocolate confectioneries	311340	39.2	40.1	0.9
Fruit and vegetable preserving and specialty	3114	39.2	41.3	2.1
Frozen food	31141	39.2	40.9	1.7
Frozen fruits, juices, and vegetables	311411	39.2	34.7	-4.5
Frozen specialty foods	311412	39.2	47.7	8.4
Fruit and vegetable canning, pickling, and drying	31142	39.2	41.6	2.4
Fruit and vegetable canning	311421	39.2	40.8	1.6
Specialty canning	311422	39.2	44.7	5.5
Dried and dehydrated foods	311423	39.2	42.3	3.0
Dairy products	3115	39.2	42.6	3.3
Dairy products (except frozen)	31151	39.2	42.5	3.3
Fluid milk	311511	39.2	43.1	3.9
Ice cream and frozen desserts	311520	39.2	43.0	3.7
Animal slaughtering and processing	31161	39.2	42.9	3.6
Animal (except poultry) slaughtering	311611	39.2	43.3	4.1
Poultry processing	311615	39.2	42.0	2.8
Seafood product preparation and packaging	31171	39.2	40.4	1.1
Bakeries and tortilla manufacturing	3118	39.2	37.5	-1.8
Bread and bakery products	31181	39.2	36.0	-3.2
Retail bakeries	311811	39.2	24.1	-15.1
Other food products	3119	39.2	40.5	1.3
Snack foods	31191	39.2	35.7	-3.5
Beverages and tobacco products	312	39.0	41.7	2.7
Beverages	3121	39.2	42.4	3.2
Soft drinks and ice	31211	39.2	40.8	1.6
Soft drinks	312111	39.2	42.1	2.9
Tobacco and tobacco products	3122	36.7	41.1	4.4
Textile mills	313	38.0	43.6	5.6
Fiber, yarn, and thread mills	31311	38.0	43.2	5.2
Fabric mills	3132	38.0	43.8	5.7
Broadwoven fabric mills	313210	38.0	43.6	5.5
Textile and fabric finishing mills	3133	38.0	43.5	5.5
Broadwoven fabric finishing mills	313311	38.0	44.3	6.2
Textile product mills	314	38.2	41.2	3.1
Textile furnishings mills	3141	38.2	40.2	2.0
Carpet and rug mills	314110	38.0	40.9	2.9
Curtain and linen mills	31412	38.3	40.1	1.8
Other textile product mills	3149	38.1	43.3	5.1
Textile bag and canvas mills	31491	38.3	43.2	4.9
All other textile products	31499	38.0	43.3	5.3
Apparel	315	38.3	37.6	-0.7
Apparel knitting mills	3151	38.0	40.2	2.2
Hosiery and sock mills	31511	38.0	41.1	3.1
Sheer hosiery mills	315111	38.0	38.5	0.5
Other hosiery and sock mills	315119	38.0	43.3	5.3
Other apparel knitting mills	31519	38.0	39.4	1.3
Cut and sew apparel	3152	38.3	38.1	-0.2

**Table 2. Comparison of supervisory (nonproduction) average weekly hours, average 1987-2002**

Description	NAICS	1987-2002 Average		Difference
		Old	New	New - Old
Cut and sew apparel contractors	31521	38.3	37.5	-0.8
Men's and boys' cut and sew apparel contractors	315211	38.3	39.1	0.7
Women's, girls', and infants' cut and sew apparel contractors	315212	38.3	36.9	-1.4
Men's and boys' cut and sew apparel	31522	38.3	37.7	-0.6
Women's and girls' cut and sew apparel	31523	38.3	39.2	0.8
Other cut and sew apparel	31529	38.3	40.4	2.1
Apparel accessories and other apparel manufacturing	31599	38.3	38.5	0.2
Leather and allied products	316	39.6	40.1	0.5
Leather and allied product manufacturing	316110	39.6	41.1	1.5
Footwear manufacturing	31621	39.6	39.4	-0.2
Other leather and allied product manufacturing	31699	39.6	41.1	1.5
Wood products	321	40.1	43.3	3.3
Sawmills and wood preservation	32111	40.1	44.6	4.5
Veneer, plywood, and engineered wood product manufacturing	32121	40.1	44.7	4.6
Reconstituted wood products	321219	40.1	43.8	3.7
Other wood products	3219	40.1	42.3	2.3
Millwork	32191	40.1	40.8	0.7
Wood windows and doors	321911	40.1	39.6	-0.5
Wood containers and pallets	321920	40.1	40.6	0.5
All other wood products	32199	40.1	43.4	3.3
Manufactured homes (mobile homes)	321991	40.1	45.5	5.4
Paper and paper products	322	39.2	43.3	4.1
Pulp, paper, and paperboard mills	3221	39.2	45.8	6.6
Paperboard mills	322130	39.2	45.2	6.0
Converted paper products	3222	39.2	41.9	2.7
Paperboard containers	32221	39.2	41.4	2.2
Corrugated and solid fiber boxes	322211	39.2	42.5	3.3
Folding paperboard boxes	322212	39.2	40.6	1.4
Paper bags and coated and treated paper	32222	39.2	42.3	3.0
Stationery products	32223	39.2	42.1	2.9
Other converted paper products	32229	39.2	42.9	3.7
Printing and related support activities	3231	37.2	39.2	2.0
Printing	32311	37.2	39.2	2.0
Commercial lithographic printing	323110	37.2	39.6	2.5
Commercial gravure printing	323111	37.2	45.3	8.1
Commercial flexographic printing	323112	37.2	39.3	2.1
Commercial screen printing	323113	37.2	38.0	0.8
Quick printing	323114	37.2	37.7	0.6
Manifold business form printing	323116	37.2	40.6	3.5
Support activities for printing	32312	37.2	39.1	1.9
Petroleum and coal products	3241	39.4	42.6	3.3
Petroleum refineries	324110	39.4	42.6	3.3
Chemicals	325	39.4	43.7	4.3
Basic chemicals	3251	39.4	46.1	6.7
Synthetic dyes and pigments	32513	39.4	40.7	1.3
Other basic inorganic chemicals	32518	39.4	43.1	3.7
Other basic organic chemicals	32519	39.4	43.2	3.8
Resin, synthetic rubber, and artificial synthetic fibers and filaments	3252	39.4	44.1	4.7
Resin and synthetic rubber	32521	39.4	43.4	4.0
Plastics material and resin	325211	39.4	43.6	4.2
Synthetic rubber	325212	39.4	42.7	3.3
Artificial and synthetic fibers and filaments	32522	39.4	45.0	5.6
Noncellulosic organic fibers	325222	39.4	45.4	6.0

**Table 2. Comparison of supervisory (nonproduction) average weekly hours, average 1987-2002**

Description	NAICS	1987-2002 Average		Difference
		Old	New	New - Old
Pesticides, fertilizers, and other agricultural chemicals	3253	39.4	49.5	10.1
Pharmaceuticals and medicine	32541	39.4	41.7	2.3
Pharmaceutical preparations	325412	39.4	41.9	2.5
Paint, coatings, and adhesives	3255	39.4	43.0	3.6
Paint and coatings	325510	39.4	43.0	3.6
Soaps, cleaning compounds, and toilet preparations	3256	39.4	41.8	2.4
Soaps and cleaning compounds	32561	39.4	41.9	2.5
Soaps and other detergents	325611	39.4	42.3	2.9
Toilet preparations	325620	39.4	41.6	2.2
Other chemical products and preparations	3259	39.4	40.9	1.5
Plastics and rubber products	326	40.1	42.5	2.4
Plastics products	3261	40.1	42.3	2.2
Plastics packaging materials and unlaminated film and sheets	32611	40.1	44.2	4.1
Unlaminated plastics film and sheets (except packaging)	326113	40.1	42.1	2.0
Plastics pipes, pipe fittings, and unlaminated profile shapes	32612	40.1	41.1	1.0
Unlaminated plastics profile shapes	326121	40.1	39.9	-0.2
Plastics pipes and pipe fittings	326122	40.1	42.6	2.5
Other plastics products	32619	40.1	42.2	2.0
Rubber products	3262	40.1	43.4	3.3
Tires	32621	40.1	43.7	3.6
Rubber and plastics hoses and belting	326220	40.1	42.3	2.2
Other rubber products	32629	40.1	42.5	2.3
Rubber products for mechanical use	326291	40.1	45.9	5.8
All other rubber products	326299	40.1	38.7	-1.4
Nonmetallic mineral products	327	40.4	42.6	2.2
Clay products and refractories	3271	40.4	42.6	2.2
Pottery, ceramics, and plumbing fixtures	32711	40.4	40.8	0.4
Clay building materials and refractories	32712	40.4	44.6	4.2
Glass and glass products	32721	40.4	42.0	1.6
Flat glass	327211	40.4	48.4	8.0
Other pressed and blown glass and glassware	327212	40.4	38.5	-1.9
Glass containers	327213	40.4	43.7	3.3
Glass products made of purchased glass	327215	40.4	41.7	1.3
Cement and concrete products	3273	40.4	41.9	1.5
Ready-mix concrete	327320	40.4	40.0	-0.4
Lime and gypsum products	3274	40.4	46.5	6.1
Other nonmetallic mineral products	3279	40.4	46.1	5.7
Primary metals	331	41.8	42.8	1.0
Iron and steel mills and ferroalloy production	33111	43.8	42.3	-1.4
Steel products from purchased steel	3312	43.8	43.2	-0.6
Iron and steel pipes and tubes from purchased steel	331210	43.8	43.2	-0.5
Rolling and drawing of purchased steel	33122	43.8	43.2	-0.6
Rolled steel shapes	331221	43.8	43.5	-0.3
Alumina and aluminum production and processing	33131	40.7	43.9	3.2
Aluminum sheets, plates, and foil	331315	40.7	48.6	7.9
Nonferrous metal (except aluminum) production and processing	3314	40.7	42.8	2.1
Nonferrous metal (except aluminum) smelting and refining	33141	40.7	40.2	-0.5
Copper rolling, drawing, extruding, and alloying	33142	40.7	43.0	2.3
Nonferrous metal (except copper and aluminum) rolling, drawing, extruding, and alloying	33149	40.7	43.8	3.1
Foundries	3315	40.7	41.9	1.2
Ferrous metal foundries	33151	40.7	42.5	1.8
Iron foundries	331511	40.7	43.5	2.8
Nonferrous metal foundries	33152	40.7	41.2	0.5

**Table 2. Comparison of supervisory (nonproduction) average weekly hours, average 1987-2002**

Description	NAICS	1987-2002 Average		Difference
		Old	New	New - Old
Fabricated metal products	332	39.3	41.5	2.2
Forging and stamping	33211	39.3	42.1	2.8
Iron and steel forging	332111	39.3	42.7	3.5
Metal stamping	332116	39.3	43.7	4.5
Cutlery and handtools	33221	39.3	40.4	1.2
Hand and edge tools	332212	39.3	40.8	1.6
Architectural and structural metals	3323	39.3	40.9	1.6
Plate work and fabricated structural products	33231	39.3	42.3	3.0
Prefabricated metal building and components	332311	39.3	42.4	3.1
Fabricated structural metals	332312	39.3	42.0	2.7
Plate work	332313	39.3	42.7	3.4
Ornamental and architectural metal products	33232	39.3	39.8	0.6
Metal windows and doors	332321	39.3	40.5	1.3
Sheet metal work	332322	39.3	38.9	-0.3
Ornamental and architectural metal work	332323	39.3	40.7	1.5
Boilers, tanks, and shipping containers	3324	39.3	41.1	1.9
Hardware	332510	39.3	44.3	5.0
Spring and wire products	33261	39.3	43.0	3.8
Machine shops; turned products; and screws, nuts, and bolts	3327	39.5	41.6	2.1
Machine shops	332710	39.6	41.1	1.5
Turned products and screws, nuts, and bolts	33272	39.3	42.6	3.3
Precision turned products	332721	39.3	42.4	3.2
Bolts, nuts, screws, rivets, and washers	332722	39.3	42.7	3.5
Coating, engraving, heat treating, and allied activities	33281	39.3	40.8	1.5
Electroplating, plating, polishing, anodizing and coloring	332813	39.3	40.3	1.0
Other fabricated metal products	3329	39.3	41.9	2.6
Metal valves	33291	39.3	43.3	4.1
Fluid power valves and hose fittings	332912	39.3	42.7	3.4
Plumbing fixture fittings and trim	332913	39.3	40.1	0.9
All other fabricated metal products	33299	39.3	41.8	2.5
Ball and roller bearings	332991	39.6	45.7	6.1
Machinery	333	39.6	43.3	3.7
Agriculture, construction, and mining machinery	3331	39.3	43.9	4.6
Agricultural implements	33311	39.6	41.7	2.1
Farm machinery and equipment	333111	39.6	43.3	3.7
Lawn and garden tractors and home lawn and garden equipment	333112	39.6	37.7	-1.9
Construction machinery	333120	39.6	43.3	3.7
Mining and oil and gas field machinery	33313	39.6	47.3	7.7
Industrial machinery	3332	39.6	42.5	2.9
Semiconductor machinery	333295	39.6	42.7	3.1
Commercial and service industry machinery	33331	39.6	43.8	4.3
Office machinery	333313	39.6	43.1	3.5
Photographic and photocopying equipment	333315	39.5	46.0	6.5
HVAC and commercial refrigeration equipment	33341	39.6	42.0	2.4
Air-conditioning and warm air heating equipment and commercial and	333415	39.6	42.0	2.4
Metalworking machinery	33351	39.6	44.1	4.5
Industrial molds	333511	39.6	43.1	3.5
Special dies and tools, die sets, jigs, and fixtures	333514	39.6	44.4	4.8
Turbine and power transmission equipment	33361	39.6	42.9	3.3
Turbines and turbine generator set units	333611	39.6	39.1	-0.5
Other general purpose machinery	3339	39.6	43.3	3.7
Pumps and compressors	33391	39.6	41.9	2.3
Air and gas compressors	333912	39.6	41.0	1.4

**Table 2. Comparison of supervisory (nonproduction) average weekly hours, average 1987-2002**

Description	NAICS	1987-2002 Average		Difference
		Old	New	New - Old
Material handling equipment	33392	39.6	43.2	3.6
Conveyor and conveying equipment	333922	39.6	43.5	3.9
Overhead traveling cranes, hoists, and monorail systems	333923	39.6	41.1	1.5
All other general purpose machinery	33399	39.6	43.7	4.1
Computer and electronic products	334	40.0	43.7	3.7
Computer and peripheral equipment	33411	39.6	47.4	7.8
Electronic computers	334111	39.6	47.4	7.8
Other computer peripheral equipment	334119	39.6	44.1	4.5
Communications equipment	3342	40.7	42.0	1.3
Telephone apparatus manufacturing	334210	40.7	43.9	3.2
Radio and television broadcasting and wireless communications equipment	334220	40.7	41.8	1.1
Audio and video equipment manufacturing	334310	40.7	41.5	0.8
Semiconductors and electronic components	33441	40.7	43.5	2.8
Electron tubes	334411	40.7	43.8	3.1
Bare printed circuit boards	334412	40.7	46.9	6.2
Semiconductors and related devices	334413	40.7	43.6	2.9
Electronic capacitors	334414	40.7	39.4	-1.3
Electronic connectors	334417	40.7	48.0	7.3
Printed circuit assemblies (electronic assemblies)	334418	40.7	42.2	1.5
Electronic instruments	33451	39.5	42.8	3.3
Electromedical and electrotherapeutic apparatuses	334510	39.5	45.7	6.2
Search, detection, navigation, guidance, aeronautical, and nautical systems	334511	39.5	43.9	4.4
Automatic environmental controls for residential, commercial, and apartment buildings	334512	39.5	41.3	1.8
Instruments and related products for measuring, displaying, and controlling	334513	39.5	42.3	2.8
Instruments for measuring and testing electricity and electrical signals	334515	39.5	42.3	2.8
Irradiation apparatuses	334517	39.5	44.4	4.9
Magnetic media manufacturing and reproduction	33461	40.7	42.0	1.3
Electrical equipment and appliances	335	40.3	42.5	2.1
Electric lighting equipment	3351	40.7	41.5	0.8
Electric lamp bulb and part manufacturing	335110	40.7	43.1	2.4
Lighting fixtures	33512	40.7	40.8	0.1
Household appliances	3352	40.7	43.8	3.1
Small electrical appliances	33521	40.7	44.6	3.9
Electric housewares and household fans	335211	40.7	44.6	3.9
Major appliances	33522	40.7	43.6	2.9
Electrical equipment	33531	40.7	42.5	1.8
Power, distribution, and specialty transformers	335311	40.7	43.5	2.9
Motors and generators	335312	40.7	42.4	1.7
Switchgear and switchboard apparatuses	335313	40.7	44.4	3.8
Relays and industrial controls	335314	40.7	40.4	-0.3
Other electrical equipment and components	3359	39.7	41.9	2.3
Batteries	33591	40.7	42.6	1.9
Storage batteries	335911	40.7	42.8	2.1
Communication and energy wire and cable	33592	40.7	43.8	3.1
Fiber optic cables	335921	40.7	44.0	3.3
Other communication and energy wires	335929	40.7	43.8	3.1
Wiring devices	33593	40.6	40.8	0.1
Current-carrying wiring devices	335931	40.7	39.7	-1.0
Noncurrent-carrying wiring devices	335932	40.7	44.5	3.9
All other electrical equipment and components	33599	40.7	42.2	1.5
Transportation equipment	336	40.9	43.3	2.3
Motor vehicles	3361	42.5	44.5	2.0
Automobiles and light duty motor vehicles	33611	42.5	44.5	2.1

**Table 2. Comparison of supervisory (nonproduction) average weekly hours, average 1987-2002**

Description	NAICS	1987-2002 Average		Difference
		Old	New	New - Old
Automobiles	336111	42.5	44.7	2.2
Light trucks and utility vehicles	336112	42.5	44.2	1.7
Heavy duty truck manufacturing	336120	42.5	44.2	1.7
Motor vehicle bodies and trailers	33621	42.5	41.1	-1.3
Motor vehicle bodies	336211	42.5	43.0	0.5
Truck trailers	336212	42.5	38.4	-4.1
Motor homes	336213	42.5	40.9	-1.6
Travel trailers and campers	336214	42.5	40.2	-2.3
Motor vehicle parts	3363	41.2	43.9	2.8
Motor vehicle gasoline engines and engine parts	33631	41.8	45.0	3.2
Carburetors, pistons, piston rings, and valves	336311	39.6	44.5	4.9
Gasoline engines and engine parts	336312	42.5	45.1	2.6
Motor vehicle electrical and electronic equipment	33632	40.7	42.5	1.9
Vehicular lighting equipment	336321	40.7	43.4	2.8
Other motor vehicle electrical and electronic equipment	336322	40.7	42.4	1.7
Motor vehicle steering and suspension components (except spring) ma	336330	42.5	45.4	2.9
Motor vehicle brake system manufacturing	336340	42.5	44.9	2.5
Motor vehicle transmission and power train parts manufacturing	336350	42.5	48.0	5.5
Motor vehicle seating and interior trim manufacturing	336360	38.3	43.5	5.2
Motor vehicle metal stamping	336370	39.3	42.0	2.8
Other motor vehicle parts	33639	42.1	42.7	0.6
All other motor vehicle parts	336399	42.5	42.4	-0.1
Aerospace products and parts	33641	40.6	43.1	2.5
Aircraft	336411	40.6	41.8	1.2
Aircraft engines and engine parts	336412	40.6	43.4	2.7
Other aircraft parts and auxiliary equipment	336413	40.6	43.7	3.0
Railroad rolling stock manufacturing	336510	40.6	43.9	3.3
Ship and boat building	33661	40.6	45.3	4.7
Ship building and repairing	336611	40.6	46.3	5.7
Boat building	336612	40.6	43.0	2.4
Other transportation equipment	33699	40.6	41.7	1.1
Furniture and related products	337	39.3	40.2	0.9
Household and institutional furniture and kitchen cabinets	3371	39.4	39.9	0.4
Wood kitchen cabinets and countertops	337110	40.1	38.4	-1.7
Household and institutional furniture	33712	39.1	40.4	1.3
Upholstered household furniture	337121	39.1	39.5	0.4
Nonupholstered wood household furniture	337122	39.1	40.5	1.4
Office furniture (including fixtures)	33721	39.1	41.2	2.1
Office furniture (except wood)	337214	39.1	44.3	5.2
Showcases, partitions, shelving, and lockers	337215	39.1	41.2	2.1
Other furniture related products	3379	39.1	40.1	1.0
Miscellaneous manufacturing	339	39.0	40.4	1.4
Medical equipment and supplies	33911	39.5	39.7	0.2
Surgical and medical instruments	339112	39.5	38.8	-0.7
Surgical appliances and supplies	339113	39.5	41.9	2.5
Dental laboratories	339116	39.5	34.3	-5.2
Other miscellaneous manufacturing	3399	38.4	40.8	2.4
Jewelry and silverware	33991	38.4	41.2	2.8
Sporting and athletic goods	339920	38.4	42.2	3.8
Dolls, toys, and games	33993	38.4	40.7	2.3
Office supplies (except paper)	33994	38.4	39.8	1.4
Signs	339950	38.4	37.5	-0.9
All other miscellaneous manufacturing	33999	38.4	40.7	2.3

**Table 2. Comparison of supervisory (nonproduction) average weekly hours, average 1987-2002**

Description	NAICS	1987-2002 Average		Difference
		Old	New	New - Old
Durable goods	423	40.0	41.8	1.8
Motor vehicles and parts	4231	40.0	44.2	4.2
Furniture and furnishings	4232	40.0	42.8	2.8
Lumber and construction supplies	4233	40.0	42.4	2.4
Commercial equipment	4234	40.0	43.8	3.8
Metals and minerals	4235	40.0	43.1	3.1
Electrical and electronic goods	4236	40.0	41.6	1.6
Hardware and plumbing	4237	40.0	38.1	-1.9
Machinery and supplies	4238	40.0	40.0	0.0
Miscellaneous durable goods	4239	40.0	39.7	-0.3
Nondurable Goods	424	40.0	41.2	1.2
Paper and paper products	4241	40.0	38.7	-1.3
Druggists' goods	424210	40.0	42.6	2.6
Apparel and piece goods	4243	40.0	42.9	2.9
Grocery and related products	4244	40.0	41.2	1.2
Farm product raw materials	4245	40.0	44.0	4.0
Chemicals	4246	40.0	43.2	3.2
Petroleum	4247	40.0	39.7	-0.3
Alcoholic beverages	4248	40.0	37.6	-2.4
Miscellaneous nondurable goods	4249	40.0	41.1	1.1
Wholesale electronic markets and agents and brokers	4251	40.0	35.7	-4.3
Business to business electronic markets	425110	40.0	33.2	-6.8
Wholesale trade agents and brokers	425120	40.0	36.2	-3.8
Motor vehicle and parts dealers	441	41.3	40.8	-0.5
Automobile dealers	4411	38.6	40.1	1.5
New car dealers	441110	37.0	40.0	3.0
Used car dealers	441120	48.2	42.0	-6.2
Other motor vehicle dealers	4412	39.0	36.2	-2.8
Recreational vehicle dealers	441210	39.0	36.4	-2.6
Motorcycle, boat, and other motor vehicle dealers	44122	39.0	36.1	-2.9
Automotive parts, accessories, and tire stores	4413	48.1	42.2	-5.9
Automotive parts and accessories stores	441310	48.1	42.6	-5.5
Tire dealers	441320	48.1	41.2	-6.9
Furniture and home furnishings stores	442	50.0	38.0	-12.0
Furniture stores	442110	50.0	37.8	-12.2
Home furnishings stores	4422	50.0	38.3	-11.7
Floor covering stores	442210	50.0	43.3	-6.7
Other home furnishings stores	44229	50.0	34.5	-15.5
Electronics and appliance stores	4431	49.1	40.4	-8.7
Appliance, television, and other electronics stores	44311	50.0	41.9	-8.1
Household appliance stores	443111	50.0	43.2	-6.8
Radio, television, and other electronics stores	443112	50.0	38.9	-11.1
Building material and garden supply stores	444	45.4	41.4	-4.1
Building material and supplies dealers	4441	46.8	41.9	-4.9
Home centers	444110	46.8	41.3	-5.5
Paint and wallpaper stores	444120	46.8	41.3	-5.5
Hardware stores	444130	46.8	41.0	-5.8
Other building material dealers	444190	46.8	43.6	-3.2
Lawn and garden equipment and supplies stores	4442	37.1	37.8	0.7
Outdoor power equipment stores	444210	37.1	37.7	0.6
Nursery, garden center, and farm supply stores	444220	37.1	37.8	0.7
Food and beverage stores	445	44.8	42.3	-2.5
Grocery stores	4451	44.9	42.5	-2.4



**Table 2. Comparison of supervisory (nonproduction) average weekly hours, average 1987-2002**

Description	NAICS	1987-2002 Average		Difference
		Old	New	New - Old
Supermarkets and other grocery (except convenience) stores	445110	44.9	42.6	-2.3
Convenience stores	445120	44.9	41.1	-3.8
Specialty food stores	4452	42.1	38.8	-3.3
Fruit and vegetable markets	445230	42.1	38.4	-3.7
Other specialty food stores	44529	42.1	38.5	-3.6
Beer, wine, and liquor stores	445310	48.0	41.9	-6.1
Health and personal care stores	4461	47.3	37.8	-9.5
Pharmacies and drug stores	446110	47.3	37.1	-10.2
Cosmetics, beauty supplies, and perfume stores	446120	47.3	37.3	-10.0
Optical goods stores	446130	47.3	38.2	-9.1
Other health and personal care stores	44619	47.3	42.8	-4.5
Food (health) supplement stores	446191	47.3	40.5	-6.8
All other health and personal care stores	446199	47.3	45.0	-2.3
Gasoline stations	4471	48.1	38.8	-9.3
Gasoline stations with convenience stores	447110	48.1	38.4	-9.7
Other gasoline stations	447190	48.1	41.2	-6.9
Clothing and clothing accessories stores	448	43.5	36.0	-7.5
Clothing stores	4481	42.6	36.1	-6.5
Men's clothing stores	448110	42.6	40.4	-2.2
Women's clothing stores	448120	42.6	31.7	-10.9
Children's and infants' clothing stores	448130	42.6	34.0	-8.6
Family clothing stores	448140	42.6	37.6	-5.0
Clothing accessories stores	448150	42.6	37.6	-5.0
Other clothing stores	448190	42.6	40.3	-2.3
Shoe stores	448210	42.8	37.8	-5.0
Jewelry, luggage, and leather goods stores	4483	47.6	35.6	-12.0
Sporting goods, hobby, book, and music stores	451	47.6	33.8	-13.8
Sporting goods, hobby, and musical instrument stores	4511	47.6	34.2	-13.4
Sporting goods stores	451110	47.6	38.4	-9.2
Hobby, toy, and game stores	451120	47.6	33.7	-13.9
Sewing, needlework, and piece goods stores	451130	47.6	31.5	-16.1
Musical instrument and supplies stores	451140	47.6	41.1	-6.5
Book, periodical, and music stores	4512	47.6	33.0	-14.6
Book stores and news dealers	45121	47.6	29.7	-17.9
Prerecorded tape, compact disc, and record stores	451220	47.6	41.2	-6.4
General merchandise stores	452	42.5	37.2	-5.4
Department stores	45211	41.4	34.8	-6.6
Department stores (except discount department stores)	452111	41.4	30.1	-11.3
Discount department stores	452112	41.4	39.1	-2.3
Other general merchandise stores	4529	44.4	38.0	-6.4
Warehouse clubs and supercenters	452910	44.4	39.8	-4.6
All other general merchandise stores	452990	44.4	33.7	-10.7
Miscellaneous store retailers	453	44.5	36.3	-8.1
Florists	453110	45.8	43.9	-1.9
Office supplies, stationery, and gift stores	4532	47.6	36.8	-10.8
Office supplies and stationery stores	453210	47.6	44.4	-3.2
Gift, novelty, and souvenir stores	453220	47.6	31.1	-16.5
Used merchandise stores	453310	42.6	35.1	-7.5
Other miscellaneous store retailers	4539	40.6	33.6	-7.0
Pet and pet supplies stores	453910	40.0	31.4	-8.6
Art dealers	453920	42.6	26.5	-16.1
Manufactured (mobile) home dealers	453930	42.6	42.3	-0.3
All other miscellaneous store retailers	45399	40.0	33.4	-6.6

**Table 2. Comparison of supervisory (nonproduction) average weekly hours, average 1987-2002**

Description	NAICS	1987-2002 Average		Difference
		Old	New	New - Old
Nonstore retailers	454	41.9	43.9	1.9
Electronic shopping and mail order houses	45411	42.3	43.3	1.0
Vending machine operators	454210	46.3	44.7	-1.6
Direct selling establishments	4543	40.0	44.0	4.0
Fuel dealers	45431	40.0	42.4	2.4
Heating oil dealers	454311	40.0	42.2	2.2
Other direct selling establishments	454390	40.0	40.8	0.8
General freight trucking, long-distance	48412	39.1	40.7	1.6
Publishing	511	37.7	42.0	4.3
Newspaper, periodical, book, and directory publishers	5111	37.2	40.5	3.3
Newspaper publishers	511110	37.2	42.6	5.4
Periodical publishers	511120	37.2	36.2	-0.9
Book publishers	511130	37.2	38.5	1.4
Database and directory publishers	511140	37.2	38.5	1.3
Other publishers	51119	37.2	40.8	3.6
Software publishers	511210	42.9	46.6	3.7
Motion picture and video exhibition	51213	41.7	24.9	-16.8
Broadcasting, except Internet	515	43.3	37.5	-5.7
Radio and television broadcasting	5151	43.3	38.5	-4.7
Radio broadcasting	51511	43.3	33.6	-9.7
Television broadcasting	515120	43.3	43.3	0.0
Cable and other subscription programming	515210	43.3	37.3	-6.0
Wired telecommunications carriers	517110	40.0	45.1	5.1
Wireless telecommunications carriers (except satellite)	51721	40.0	41.6	1.6
Cable and other program distribution	517510	43.3	40.5	-2.8
Commercial banking	522110	40.0	41.4	1.4
Passenger car rental	532111	46.0	42.6	-3.4
Truck, utility trailer, and rv (recreational vehicle) rental and leasing	532120	45.3	44.0	-1.3
Video tape and disc rental	532230	45.3	30.5	-14.8
Tax preparation services	541213	37.9	33.3	-4.6
Advertising agencies	541810	43.4	42.7	-0.6
Photography studios, portrait	541921	37.9	30.7	-7.2
Travel agencies	561510	42.8	40.6	-2.1
Janitorial services	561720	55.0	36.2	-18.8
Traveler accommodation	7211	47.4	41.4	-6.0
Hotels (except casino hotels) and motels	721110	47.4	40.5	-6.9
Casino hotels	721120	47.4	47.8	0.4
Other traveler accommodation	72119	47.4	31.4	-16.0
Bed-and-breakfast inns	721191	47.4	27.1	-20.3
All other traveler accommodation	721199	47.4	42.0	-5.4
Food services and drinking places	722	46.8	40.1	-6.7
Full-service restaurants	722110	46.8	40.7	-6.1
Limited-service eating places	72221	46.8	39.3	-7.5
Special food services	7223	46.8	43.2	-3.6
Drinking places (alcoholic beverages)	722410	46.8	38.5	-8.3
Automotive repair and maintenance	8111	50.0	43.2	-6.8
Hair, nail, and skin care services	81211	28.6	38.1	9.5
Funeral homes and funeral services	812210	48.5	45.3	-3.2
Drycleaning and laundry services	8123	43.0	43.7	0.7
Coin-operated laundries and drycleaners	812310	43.0	43.3	0.3
Drycleaning and laundry services (except coin-operated)	812320	43.0	42.1	-0.9
Linen and uniform supply	81233	43.0	46.6	3.6
Photofinishing	81292	47.6	45.0	-2.6

**Table 3. Comparison of average annual percentage growth rates of  
supervisory (nonproduction) worker hours, 1987-2002**

<b>Description</b>	<b>NAICS</b>	<b>Old</b>	<b>New</b>	<b>New - Old</b>
Food manufacturing	311	-0.1	0.2	0.3
Animal food manufacturing	31111	-1.4	-2.3	-0.9
Grain and oilseed milling	3112	-1.1	-1.2	-0.1
Breakfast cereals	311230	-2.6	-2.6	-0.1
Sugar and confectionery products	3113	0.4	1.3	0.9
Sugar	31131	-2.6	-1.0	1.6
Nonchocolate confectioneries	311340	1.7	2.3	0.6
Fruit and vegetable preserving and specialty	3114	-0.4	0.4	0.9
Frozen food	31141	1.5	2.5	1.0
Frozen fruits, juices, and vegetables	311411	-0.2	1.4	1.6
Frozen specialty foods	311412	3.0	3.1	0.1
Fruit and vegetable canning, pickling, and drying	31142	-1.8	-1.0	0.8
Fruit and vegetable canning	311421	-1.0	-0.1	0.9
Specialty canning	311422	-5.9	-5.1	0.7
Dried and dehydrated foods	311423	-1.5	-1.1	0.4
Dairy products	3115	-1.8	-1.5	0.4
Dairy products (except frozen)	31151	-1.9	-1.5	0.5
Fluid milk	311511	-2.8	-2.5	0.3
Ice cream and frozen desserts	311520	-1.0	-1.1	-0.1
Animal slaughtering and processing	31161	2.0	1.9	0.0
Animal (except poultry) slaughtering	311611	1.4	1.4	0.0
Poultry processing	311615	4.4	4.4	0.0
Seafood product preparation and packaging	31171	2.6	2.2	-0.5
Bakeries and tortilla manufacturing	3118	-1.1	-1.0	0.1
Bread and bakery products	31181	-1.5	-1.3	0.2
Retail bakeries	311811	3.7	4.1	0.4
Other food products	3119	1.1	1.4	0.4
Snack foods	31191	0.3	1.6	1.3
Beverages and tobacco products	312	-1.4	-1.5	-0.1
Beverages	3121	-1.5	-1.7	-0.1
Soft drinks and ice	31211	-2.4	-2.1	0.3
Soft drinks	312111	-2.0	-1.9	0.1
Tobacco and tobacco products	3122	-0.5	-0.5	-0.1
Textile mills	313	-2.3	-2.6	-0.3
Fiber, yarn, and thread mills	31311	-3.3	-3.8	-0.5
Fabric mills	3132	-2.2	-2.3	-0.2
Broadwoven fabric mills	313210	-2.3	-2.6	-0.4
Textile and fabric finishing mills	3133	-2.0	-2.2	-0.3
Broadwoven fabric finishing mills	313311	-1.6	-1.6	0.0
Textile product mills	314	0.6	0.5	-0.1
Textile furnishings mills	3141	-0.4	-0.3	0.1
Carpet and rug mills	314110	-0.5	-0.3	0.2
Curtain and linen mills	31412	-0.3	-0.5	-0.2
Other textile product mills	3149	2.0	1.2	-0.7
Textile bag and canvas mills	31491	3.3	2.9	-0.4
All other textile products	31499	0.9	0.1	-0.9
Apparel	315	-2.8	-2.6	0.2
Apparel knitting mills	3151	-3.8	-3.8	0.0
Hosiery and sock mills	31511	-2.6	-2.8	-0.2
Sheer hosiery mills	315111	-4.5	-4.2	0.3
Other hosiery and sock mills	315119	-0.7	-1.5	-0.8
Other apparel knitting mills	31519	-5.1	-5.0	0.1
Cut and sew apparel	3152	-3.0	-2.7	0.3
Cut and sew apparel contractors	31521	2.9	3.2	0.3
Men's and boys' cut and sew apparel contractors	315211	-1.4	-1.5	-0.1
Women's, girls', and infants' cut and sew apparel contractors	315212	7.6	8.1	0.5

**Table 3. Comparison of average annual percentage growth rates of  
supervisory (nonproduction) worker hours, 1987-2002**

<b>Description</b>	<b>NAICS</b>	<b>Old</b>	<b>New</b>	<b>New - Old</b>
Men's and boys' cut and sew apparel	31522	-4.8	-4.4	0.4
Women's and girls' cut and sew apparel	31523	-4.5	-4.3	0.2
Other cut and sew apparel	31529	-0.8	-0.9	-0.1
Apparel accessories and other apparel manufacturing	31599	0.3	0.4	0.1
Leather and allied products	316	-2.9	-3.4	-0.5
Leather and allied product manufacturing	316110	-1.3	-1.9	-0.7
Footwear manufacturing	31621	-4.8	-5.2	-0.4
Other leather and allied product manufacturing	31699	-1.5	-2.2	-0.7
Wood products	321	0.4	0.2	-0.2
Sawmills and wood preservation	32111	-1.0	-0.8	0.1
Veneer, plywood, and engineered wood product manufacturing	32121	2.5	2.2	-0.2
Reconstituted wood products	321219	1.7	1.9	0.3
Other wood products	3219	0.2	-0.1	-0.3
Millwork	32191	1.0	0.7	-0.2
Wood windows and doors	321911	1.5	1.6	0.1
Wood containers and pallets	321920	0.3	0.4	0.1
All other wood products	32199	-0.7	-1.3	-0.6
Manufactured homes (mobile homes)	321991	-0.4	-1.5	-1.2
Paper and paper products	322	-0.9	-0.9	0.0
Pulp, paper, and paperboard mills	3221	-2.9	-3.2	-0.2
Paperboard mills	322130	-2.5	-2.7	-0.3
Converted paper products	3222	0.2	0.4	0.2
Paperboard containers	32221	0.3	0.6	0.2
Corrugated and solid fiber boxes	322211	1.4	1.5	0.1
Folding paperboard boxes	322212	-1.0	-0.6	0.4
Paper bags and coated and treated paper	32222	1.4	1.4	-0.1
Stationery products	32223	-0.5	-0.6	-0.1
Other converted paper products	32229	-1.3	-1.3	0.1
Printing and related support activities	3231	0.6	0.9	0.3
Printing	32311	0.6	0.9	0.3
Commercial lithographic printing	323110	0.4	0.7	0.3
Commercial gravure printing	323111	15.6 <sup>1</sup>	14.6 <sup>1</sup>	-1.0
Commercial flexographic printing	323112	-0.5	0.0	0.5
Commercial screen printing	323113	1.4	1.8	0.4
Quick printing	323114	2.1	2.3	0.2
Manifold business form printing	323116	-1.7	-2.0	-0.2
Support activities for printing	32312	0.4	0.8	0.3
Petroleum and coal products	3241	-2.2	-2.5	-0.2
Petroleum refineries	324110	-3.1	-3.2	-0.1
Chemicals	325	0.3	0.4	0.1
Basic chemicals	3251	-1.6	-1.6	0.0
Synthetic dyes and pigments	32513	1.0	1.5	0.5
Other basic inorganic chemicals	32518	-3.0	-2.8	0.3
Other basic organic chemicals	32519	-2.4	-2.2	0.2
Resin, synthetic rubber, and artificial synthetic fibers and filaments	3252	-1.7	-1.8	-0.1
Resin and synthetic rubber	32521	-0.4	-0.3	0.1
Plastics material and resin	325211	-1.1	-0.9	0.2
Synthetic rubber	325212	3.7	3.5	-0.2
Artificial and synthetic fibers and filaments	32522	-4.9	-5.3	-0.4
Noncellulosic organic fibers	325222	-6.7	-7.1	-0.4
Pesticides, fertilizers, and other agricultural chemicals	3253	0.8	0.4	-0.3
Pharmaceuticals and medicine	32541	3.8	4.7	0.8
Pharmaceutical preparations	325412	3.4	4.3	0.9
Paint, coatings, and adhesives	3255	-1.5	-1.4	0.1
Paint and coatings	325510	-2.7	-2.6	0.1
Soaps, cleaning compounds, and toilet preparations	3256	0.2	0.1	0.0

**Table 3. Comparison of average annual percentage growth rates of  
supervisory (nonproduction) worker hours, 1987-2002**

<b>Description</b>	<b>NAICS</b>	<b>Old</b>	<b>New</b>	<b>New - Old</b>
Soaps and cleaning compounds	32561	-0.7	-1.1	-0.3
Soaps and other detergents	325611	0.1	-0.1	-0.2
Toilet preparations	325620	1.7	2.1	0.3
Other chemical products and preparations	3259	-2.8	-2.7	0.0
Plastics and rubber products	326	0.6	0.6	0.0
Plastics products	3261	1.3	1.3	0.0
Plastics packaging materials and unlaminated film and sheets	32611	1.7	1.5	-0.1
Unlaminated plastics film and sheets (except packaging)	326113	1.0	1.4	0.4
Plastics pipes, pipe fittings, and unlaminated profile shapes	32612	0.2	0.6	0.4
Unlaminated plastics profile shapes	326121	-0.3	0.5	0.8
Plastics pipes and pipe fittings	326122	0.9	0.8	-0.1
Other plastics products	32619	1.0	0.9	-0.1
Rubber products	3262	-1.3	-1.3	0.0
Tires	32621	-1.4	-1.5	-0.1
Rubber and plastics hoses and belting	326220	-3.1	-3.3	-0.2
Other rubber products	32629	-0.4	-0.5	-0.1
Rubber products for mechanical use	326291	0.8	0.4	-0.4
All other rubber products	326299	-2.1	-1.8	0.3
Nonmetallic mineral products	327	0.4	0.4	0.1
Clay products and refractories	3271	0.3	0.1	-0.2
Pottery, ceramics, and plumbing fixtures	32711	0.9	0.9	0.0
Clay building materials and refractories	32712	-0.1	-0.6	-0.4
Glass and glass products	32721	-0.7	-0.6	0.1
Flat glass	327211	-1.8	-3.0	-1.2
Other pressed and blown glass and glassware	327212	1.8	2.1	0.3
Glass containers	327213	-5.0	-4.6	0.4
Glass products made of purchased glass	327215	-0.6	-0.3	0.2
Cement and concrete products	3273	1.6	2.1	0.5
Ready-mix concrete	327320	2.8	3.7	0.9
Lime and gypsum products	3274	-0.3	-0.6	-0.3
Other nonmetallic mineral products	3279	-1.0	-1.4	-0.4
Primary metals	331	-3.1	-3.0	0.1
Iron and steel mills and ferroalloy production	33111	-4.7	-4.3	0.4
Steel products from purchased steel	3312	-1.1	-1.1	0.0
Iron and steel pipes and tubes from purchased steel	331210	0.4	0.4	0.0
Rolling and drawing of purchased steel	33122	-2.0	-2.0	0.1
Rolled steel shapes	331221	-1.8	-1.9	-0.1
Alumina and aluminum production and processing	33131	-4.0	-4.4	-0.4
Aluminum sheets, plates, and foil	331315	-3.5	-4.7	-1.1
Nonferrous metal (except aluminum) production and processing	3314	-2.5	-2.5	0.0
Nonferrous metal (except aluminum) smelting and refining	33141	-3.2	-2.5	0.7
Copper rolling, drawing, extruding, and alloying	33142	-2.9	-2.9	0.0
Nonferrous metal (except copper and aluminum) rolling, drawing, ex	33149	-1.4	-1.8	-0.4
Foundries	3315	-2.3	-2.2	0.1
Ferrous metal foundries	33151	-3.6	-3.5	0.0
Iron foundries	331511	-4.0	-4.0	0.0
Nonferrous metal foundries	33152	-0.4	-0.2	0.2
Fabricated metal products	332	-0.6	-0.6	0.0
Forging and stamping	33211	-1.5	-1.4	0.1
Iron and steel forging	332111	-0.4	-0.4	0.0
Metal stamping	332116	-2.5	-2.7	-0.2
Cutlery and handtools	33221	-2.2	-2.1	0.1
Hand and edge tools	332212	-3.0	-2.9	0.1
Architectural and structural metals	3323	0.3	0.4	0.1
Plate work and fabricated structural products	33231	0.4	0.4	0.0
Prefabricated metal building and components	332311	3.7	3.0	-0.7

**Table 3. Comparison of average annual percentage growth rates of  
supervisory (nonproduction) worker hours, 1987-2002**

<b>Description</b>	<b>NAICS</b>	<b>Old</b>	<b>New</b>	<b>New - Old</b>
Fabricated structural metals	332312	0.6	0.8	0.1
Plate work	332313	-2.4	-2.4	0.0
Ornamental and architectural metal products	33232	0.3	0.5	0.1
Metal windows and doors	332321	-0.5	-0.3	0.2
Sheet metal work	332322	0.8	1.1	0.2
Ornamental and architectural metal work	332323	1.0	0.8	-0.2
Boilers, tanks, and shipping containers	3324	-2.8	-2.7	0.1
Hardware	332510	-2.9	-2.9	0.0
Spring and wire products	33261	-0.3	-0.5	-0.2
Machine shops; turned products; and screws, nuts, and bolts	3327	0.2	0.2	0.0
Machine shops	332710	0.6	0.8	0.2
Turned products and screws, nuts, and bolts	33272	-0.8	-1.0	-0.2
Precision turned products	332721	-0.3	-0.4	-0.1
Bolts, nuts, screws, rivets, and washers	332722	-1.2	-1.5	-0.3
Coating, engraving, heat treating, and allied activities	33281	0.3	0.1	-0.2
Electroplating, plating, polishing, anodizing and coloring	332813	-1.2	-1.3	-0.2
Other fabricated metal products	3329	-1.1	-1.1	0.0
Metal valves	33291	-0.9	-1.2	-0.3
Fluid power valves and hose fittings	332912	-0.3	-0.2	0.1
Plumbing fixture fittings and trim	332913	-1.2	-1.1	0.0
All other fabricated metal products	33299	-1.2	-1.1	0.1
Ball and roller bearings	332991	-0.3	-0.5	-0.2
Machinery	333	-0.6	-0.6	0.0
Agriculture, construction, and mining machinery	3331	-1.4	-0.8	0.6
Agricultural implements	33311	-0.5	-0.6	-0.1
Farm machinery and equipment	333111	-1.8	-2.2	-0.4
Lawn and garden tractors and home lawn and garden equipment	333112	4.3	4.7	0.5
Construction machinery	333120	-1.9	-2.6	-0.7
Mining and oil and gas field machinery	33313	0.7	1.1	0.3
Industrial machinery	3332	1.4	1.5	0.0
Semiconductor machinery	333295	0.5	0.7	0.1
Commercial and service industry machinery	33331	-0.8	-1.0	-0.2
Office machinery	333313	-3.7	-4.0	-0.3
Photographic and photocopying equipment	333315	-5.1	-5.6	-0.6
HVAC and commercial refrigeration equipment	33341	-0.2	-0.1	0.1
Air-conditioning and warm air heating equipment and commercial air conditioning equipment	333415	0.4	0.4	0.1
Metalworking machinery	33351	-1.1	-1.3	-0.2
Industrial molds	333511	-0.2	-0.3	-0.1
Special dies and tools, die sets, jigs, and fixtures	333514	-0.9	-1.2	-0.3
Turbine and power transmission equipment	33361	-1.2	-1.1	0.0
Turbines and turbine generator set units	333611	0.3	1.6	1.3
Other general purpose machinery	3339	-0.7	-0.9	-0.3
Pumps and compressors	33391	1.0	1.4	0.5
Air and gas compressors	333912	1.5	2.2	0.7
Material handling equipment	33392	-0.9	-1.0	-0.1
Conveyor and conveying equipment	333922	0.0	0.1	0.0
Overhead traveling cranes, hoists, and monorail systems	333923	-1.7	-1.3	0.3
All other general purpose machinery	33399	-1.1	-1.7	-0.5
Computer and electronic products	334	-1.6	-1.7	-0.1
Computer and peripheral equipment	33411	-3.5	-3.9	-0.4
Electronic computers	334111	-4.9	-5.4	-0.5
Other computer peripheral equipment	334119	-0.5	-0.2	0.3
Communications equipment	3342	-1.2	-1.3	-0.1
Telephone apparatus manufacturing	334210	-2.3	-2.8	-0.5
Radio and television broadcasting and wireless communications equipment manufacturing	334220	-1.2	-1.3	-0.1
Audio and video equipment manufacturing	334310	-1.1	-1.3	-0.1

**Table 3. Comparison of average annual percentage growth rates of  
supervisory (nonproduction) worker hours, 1987-2002**

<b>Description</b>	<b>NAICS</b>	<b>Old</b>	<b>New</b>	<b>New - Old</b>
Semiconductors and electronic components	33441	-0.7	-0.6	0.0
Electron tubes	334411	-7.9	-7.8	0.2
Bare printed circuit boards	334412	1.5	1.1	-0.5
Semiconductors and related devices	334413	-0.4	-0.3	0.1
Electronic capacitors	334414	-3.9	-4.0	-0.1
Electronic connectors	334417	4.9	4.8	-0.1
Printed circuit assemblies (electronic assemblies)	334418	-1.1	-1.0	0.1
Electronic instruments	33451	-1.4	-1.6	-0.2
Electromedical and electrotherapeutic apparatuses	334510	5.2	4.2	-1.0
Search, detection, navigation, guidance, aeronautical, and nautical systems	334511	-3.3	-3.6	-0.3
Automatic environmental controls for residential, commercial, and agricultural buildings	334512	-2.8	-2.6	0.2
Instruments and related products for measuring, displaying, and controlling	334513	0.9	0.3	-0.5
Instruments for measuring and testing electricity and electrical signals	334515	-1.2	-1.3	-0.1
Irradiation apparatuses	334517	1.9	2.2	0.3
Magnetic media manufacturing and reproduction	33461	-1.0	-0.5	0.5
Electrical equipment and appliances	335	-2.3	-1.4	0.9
Electric lighting equipment	3351	-0.1	0.1	0.3
Electric lamp bulb and part manufacturing	335110	-0.5	-0.3	0.2
Lighting fixtures	33512	0.0	0.3	0.3
Household appliances	3352	-1.4	-1.8	-0.4
Small electrical appliances	33521	-1.8	-2.0	-0.2
Electric housewares and household fans	335211	-2.6	-2.9	-0.2
Major appliances	33522	-1.1	-1.5	-0.4
Electrical equipment	33531	-1.4	-1.4	0.0
Power, distribution, and specialty transformers	335311	-2.4	-2.8	-0.4
Motors and generators	335312	-0.9	-0.8	0.1
Switchgear and switchboard apparatuses	335313	-0.3	-0.4	-0.1
Relays and industrial controls	335314	-1.7	-1.5	0.3
Other electrical equipment and components	3359	-5.1	-1.8	3.3
Batteries	33591	-0.5	-0.5	0.0
Storage batteries	335911	-1.4	-1.4	0.0
Communication and energy wire and cable	33592	0.1	0.2	0.1
Fiber optic cables	335921	3.7	3.7	0.1
Other communication and energy wires	335929	-3.4	-3.3	0.1
Wiring devices	33593	-2.9	-2.8	0.2
Current-carrying wiring devices	335931	-3.3	-3.0	0.3
Noncurrent-carrying wiring devices	335932	-0.9	-1.4	-0.4
All other electrical equipment and components	33599	-1.9	-2.1	-0.2
Transportation equipment	336	-1.7	-1.5	0.2
Motor vehicles	3361	2.7	3.2	0.5
Automobiles and light duty motor vehicles	33611	3.1	3.6	0.5
Automobiles	336111	2.7	3.2	0.5
Light trucks and utility vehicles	336112	4.7	5.4	0.7
Heavy duty truck manufacturing	336120	1.1	1.3	0.2
Motor vehicle bodies and trailers	33621	-0.1	0.1	0.2
Motor vehicle bodies	336211	0.0	0.2	0.1
Truck trailers	336212	0.3	0.9	0.6
Motor homes	336213	-0.7	-0.9	-0.2
Travel trailers and campers	336214	-0.6	-0.3	0.3
Motor vehicle parts	3363	0.7	1.0	0.3
Motor vehicle gasoline engines and engine parts	33631	0.6	0.7	0.1
Carburetors, pistons, piston rings, and valves	336311	-0.8	-1.2	-0.4
Gasoline engines and engine parts	336312	1.1	1.3	0.2
Motor vehicle electrical and electronic equipment	33632	-1.5	-1.3	0.2
Vehicular lighting equipment	336321	-0.7	-1.1	-0.4
Other motor vehicle electrical and electronic equipment	336322	-1.6	-1.3	0.3

**Table 3. Comparison of average annual percentage growth rates of  
supervisory (nonproduction) worker hours, 1987-2002**

<b>Description</b>	<b>NAICS</b>	<b>Old</b>	<b>New</b>	<b>New - Old</b>
Motor vehicle steering and suspension components (except spring) m	336330	1.2	1.8	0.7
Motor vehicle brake system manufacturing	336340	2.3	2.6	0.3
Motor vehicle transmission and power train parts manufacturing	336350	1.6	2.0	0.5
Motor vehicle seating and interior trim manufacturing	336360	1.4	1.2	-0.2
Motor vehicle metal stamping	336370	1.7	2.5	0.8
Other motor vehicle parts	33639	0.9	1.1	0.2
All other motor vehicle parts	336399	1.3	1.5	0.2
Aerospace products and parts	33641	-3.5	-3.4	0.1
Aircraft	336411	-2.6	-2.6	0.0
Aircraft engines and engine parts	336412	-3.4	-3.0	0.4
Other aircraft parts and auxiliary equipment	336413	-3.0	-2.9	0.0
Railroad rolling stock manufacturing	336510	0.7	0.7	0.0
Ship and boat building	33661	-0.7	-1.0	-0.3
Ship building and repairing	336611	-1.0	-1.1	-0.1
Boat building	336612	0.0	-0.5	-0.5
Other transportation equipment	33699	-0.3	-0.1	0.1
Furniture and related products	337	-0.3	-0.4	-0.1
Household and institutional furniture and kitchen cabinets	3371	-0.7	-0.8	-0.1
Wood kitchen cabinets and countertops	337110	1.5	1.8	0.4
Household and institutional furniture	33712	-1.9	-2.1	-0.3
Upholstered household furniture	337121	-1.8	-2.1	-0.3
Nonupholstered wood household furniture	337122	-2.0	-2.3	-0.3
Office furniture (including fixtures)	33721	0.0	-0.2	-0.2
Office furniture (except wood)	337214	1.8	0.9	-0.8
Showcases, partitions, shelving, and lockers	337215	-0.9	-1.1	-0.1
Other furniture related products	3379	1.0	0.9	0.0
Miscellaneous manufacturing	339	0.4	0.6	0.2
Medical equipment and supplies	33911	0.3	0.7	0.4
Surgical and medical instruments	339112	0.1	0.7	0.7
Surgical appliances and supplies	339113	1.6	1.8	0.2
Dental laboratories	339116	2.0	2.8	0.8
Other miscellaneous manufacturing	3399	0.5	0.8	0.2
Jewelry and silverware	33991	-1.5	-1.8	-0.3
Sporting and athletic goods	339920	4.5	4.7	0.2
Dolls, toys, and games	33993	-1.3	-1.1	0.2
Office supplies (except paper)	33994	-1.2	-1.3	-0.1
Signs	339950	2.9	3.5	0.7
All other miscellaneous manufacturing	33999	-0.1	-0.2	-0.1
Durable goods	423	1.1	0.9	-0.2
Motor vehicles and parts	4231	1.1	0.4	-0.7
Furniture and furnishings	4232	1.8	1.7	-0.1
Lumber and construction supplies	4233	0.8	0.6	-0.2
Commercial equipment	4234	3.5	3.0	-0.5
Metals and minerals	4235	-0.6	-0.7	-0.1
Electrical and electronic goods	4236	0.8	0.9	0.1
Hardware and plumbing	4237	0.5	1.0	0.5
Machinery and supplies	4238	-0.3	-0.3	-0.1
Miscellaneous durable goods	4239	2.9	2.8	-0.1
Nondurable Goods	424	0.5	0.5	0.0
Paper and paper products	4241	-0.8	-1.3	-0.4
Druggists' goods	424210	2.1	1.9	-0.3
Apparel and piece goods	4243	-0.9	-0.5	0.5
Grocery and related products	4244	1.3	1.6	0.3
Farm product raw materials	4245	-2.0	-3.7	-1.7
Chemicals	4246	2.1	2.2	0.1
Petroleum	4247	-4.1	-4.4	-0.3



**Table 3. Comparison of average annual percentage growth rates of  
supervisory (nonproduction) worker hours, 1987-2002**

<b>Description</b>	<b>NAICS</b>	<b>Old</b>	<b>New</b>	<b>New - Old</b>
Alcoholic beverages	4248	1.8	2.6	0.8
Miscellaneous nondurable goods	4249	1.3	1.1	-0.3
Wholesale electronic markets and agents and brokers	4251	2.2	1.7	-0.5
Business to business electronic markets	425110	2.9	2.5	-0.5
Wholesale trade agents and brokers	425120	2.1	1.6	-0.5
Motor vehicle and parts dealers	441	1.8	1.5	-0.3
Automobile dealers	4411	1.3	1.0	-0.3
New car dealers	441110	0.8	0.6	-0.1
Used car dealers	441120	4.0	3.1	-0.9
Other motor vehicle dealers	4412	3.8	3.4	-0.4
Recreational vehicle dealers	441210	6.7	6.2	-0.5
Motorcycle, boat, and other motor vehicle dealers	44122	3.3	2.9	-0.4
Automotive parts, accessories, and tire stores	4413	2.5	2.4	-0.1
Automotive parts and accessories stores	441310	2.9	2.6	-0.3
Tire dealers	441320	1.9	2.2	0.4
Furniture and home furnishings stores	442	2.6	2.4	-0.2
Furniture stores	442110	2.6	2.6	0.1
Home furnishings stores	4422	2.7	2.2	-0.5
Floor covering stores	442210	1.6	1.5	-0.1
Other home furnishings stores	44229	3.8	3.3	-0.5
Electronics and appliance stores	4431	5.1	5.0	0.0
Appliance, television, and other electronics stores	44311	4.2	4.0	-0.2
Household appliance stores	443111	2.8	2.8	0.1
Radio, television, and other electronics stores	443112	4.8	4.2	-0.6
Building material and garden supply stores	444	3.3	3.3	0.0
Building material and supplies dealers	4441	3.4	3.5	0.1
Home centers	444110	4.9	5.1	0.1
Paint and wallpaper stores	444120	0.3	0.0	-0.3
Hardware stores	444130	1.0	0.6	-0.4
Other building material dealers	444190	3.4	3.5	0.1
Lawn and garden equipment and supplies stores	4442	1.9	1.6	-0.3
Outdoor power equipment stores	444210	2.2	1.7	-0.6
Nursery, garden center, and farm supply stores	444220	1.8	1.6	-0.2
Food and beverage stores	445	4.4	4.2	-0.2
Grocery stores	4451	5.3	5.1	-0.2
Supermarkets and other grocery (except convenience) stores	445110	5.3	5.1	-0.2
Convenience stores	445120	5.0	4.2	-0.8
Specialty food stores	4452	3.3	3.5	0.2
Fruit and vegetable markets	445230	5.6	6.0	0.5
Other specialty food stores	44529	3.7	4.1	0.3
Beer, wine, and liquor stores	445310	0.2	-0.8	-1.0
Health and personal care stores	4461	1.4	1.1	-0.3
Pharmacies and drug stores	446110	0.4	-0.1	-0.5
Cosmetics, beauty supplies, and perfume stores	446120	4.8	5.4	0.5
Optical goods stores	446130	2.3	2.5	0.2
Other health and personal care stores	44619	5.4	5.6	0.2
Food (health) supplement stores	446191	4.3	4.0	-0.3
All other health and personal care stores	446199	6.6	7.2	0.6
Gasoline stations	4471	2.2	0.8	-1.4
Gasoline stations with convenience stores	447110	2.4	1.0	-1.4
Other gasoline stations	447190	1.3	0.0	-1.4
Clothing and clothing accessories stores	448	1.2	0.9	-0.3
Clothing stores	4481	1.9	1.4	-0.5
Men's clothing stores	448110	-2.1	-2.5	-0.5
Women's clothing stores	448120	-0.3	-1.1	-0.9
Children's and infants' clothing stores	448130	9.8	9.3	-0.5

**Table 3. Comparison of average annual percentage growth rates of  
supervisory (nonproduction) worker hours, 1987-2002**

<b>Description</b>	<b>NAICS</b>	<b>Old</b>	<b>New</b>	<b>New - Old</b>
Family clothing stores	448140	4.9	4.4	-0.5
Clothing accessories stores	448150	1.9	1.1	-0.8
Other clothing stores	448190	2.8	2.5	-0.3
Shoe stores	448210	0.6	0.2	-0.4
Jewelry, luggage, and leather goods stores	4483	-0.4	0.2	0.6
Sporting goods, hobby, book, and music stores	451	4.1	3.8	-0.3
Sporting goods, hobby, and musical instrument stores	4511	3.7	3.5	-0.2
Sporting goods stores	451110	3.2	2.8	-0.4
Hobby, toy, and game stores	451120	6.0	6.8	0.8
Sewing, needlework, and piece goods stores	451130	3.5	4.0	0.5
Musical instrument and supplies stores	451140	1.6	1.9	0.4
Book, periodical, and music stores	4512	4.9	4.4	-0.5
Book stores and news dealers	45121	5.3	6.2	0.9
Prerecorded tape, compact disc, and record stores	451220	4.2	2.4	-1.8
General merchandise stores	452	6.3	6.4	0.1
Department stores	45211	6.0	6.3	0.3
Department stores (except discount department stores)	452111	4.1	4.3	0.2
Discount department stores	452112	10.9	11.2	0.3
Other general merchandise stores	4529	6.8	7.0	0.2
Warehouse clubs and supercenters	452910	22.7	22.8	0.1
All other general merchandise stores	452990	2.8	2.7	-0.2
Miscellaneous store retailers	453	4.1	4.0	-0.2
Florists	453110	2.8	2.6	-0.2
Office supplies, stationery, and gift stores	4532	4.2	3.9	-0.2
Office supplies and stationery stores	453210	3.3	3.5	0.2
Gift, novelty, and souvenir stores	453220	5.2	4.8	-0.4
Used merchandise stores	453310	7.1	6.6	-0.5
Other miscellaneous store retailers	4539	3.8	3.7	-0.1
Pet and pet supplies stores	453910	4.4	4.3	-0.1
Art dealers	453920	4.2	3.7	-0.5
Manufactured (mobile) home dealers	453930	3.6	3.8	0.2
All other miscellaneous store retailers	45399	3.6	3.7	0.1
Nonstore retailers	454	3.6	3.5	-0.1
Electronic shopping and mail order houses	45411	15.1	15.4	0.3
Vending machine operators	454210	-0.2	-0.1	0.1
Direct selling establishments	4543	-0.5	-1.0	-0.4
Fuel dealers	45431	-1.1	-1.4	-0.3
Heating oil dealers	454311	-1.1	-1.4	-0.3
Other direct selling establishments	454390	0.5	0.4	-0.1
General freight trucking, long-distance	48412	-0.2	-0.4	-0.2
Publishing	511	0.9	1.6	0.8
Newspaper, periodical, book, and directory publishers	5111	0.0	0.6	0.6
Newspaper publishers	511110	-0.6	-0.4	0.2
Periodical publishers	511120	0.3	0.7	0.4
Book publishers	511130	3.9	4.4	0.5
Database and directory publishers	511140	1.5	2.1	0.6
Other publishers	51119	-3.0	-2.8	0.2
Software publishers	511210	8.7	9.8	1.1
Motion picture and video exhibition	51213	0.5	0.8	0.3
Broadcasting, except Internet	515	2.4	2.6	0.1
Radio and television broadcasting	5151	1.1	0.8	-0.4
Radio broadcasting	51511	-0.1	-1.2	-1.0
Television broadcasting	515120	2.2	2.1	0.0
Cable and other subscription programming	515210	5.2	7.0	1.7
Wired telecommunications carriers	517110	-0.3	-0.5	-0.2
Wireless telecommunications carriers (except satellite)	51721	12.8	14.0	1.1

**Table 3. Comparison of average annual percentage growth rates of  
supervisory (nonproduction) worker hours, 1987-2002**

<b>Description</b>	<b>NAICS</b>	<b>Old</b>	<b>New</b>	<b>New - Old</b>
Cable and other program distribution	517510	4.6	5.7	1.1
Commercial banking	522110	-0.2	-0.2	-0.1
Passenger car rental	532111	2.4	1.6	-0.8
Truck, utility trailer, and rv (recreational vehicle) rental and leasing	532120	0.2	-0.6	-0.8
Video tape and disc rental	532230	5.4	5.4	0.0
Tax preparation services	541213	5.0	4.2	-0.8
Advertising agencies	541810	1.2	0.6	-0.6
Photography studios, portrait	541921	8.1	7.9	-0.2
Travel agencies	561510	-0.8	-1.0	-0.1
Janitorial services	561720	2.5	1.9	-0.6
Traveler accommodation	7211	2.8	1.8	-1.1
Hotels (except casino hotels) and motels	721110	2.7	1.6	-1.1
Casino hotels	721120	3.6	2.3	-1.3
Other traveler accommodation	72119	3.0	2.1	-0.9
Bed-and-breakfast inns	721191	2.6	1.8	-0.8
All other traveler accommodation	721199	3.5	1.8	-1.7
Food services and drinking places	722	0.7	0.1	-0.6
Full-service restaurants	722110	0.4	-0.3	-0.6
Limited-service eating places	72221	1.0	0.4	-0.6
Special food services	7223	1.2	0.3	-0.9
Drinking places (alcoholic beverages)	722410	0.7	0.1	-0.6
Automotive repair and maintenance	8111	3.8	3.0	-0.9
Hair, nail, and skin care services	81211	2.2	1.5	-0.7
Funeral homes and funeral services	812210	2.4	2.0	-0.4
Drycleaning and laundry services	8123	1.8	1.1	-0.7
Coin-operated laundries and drycleaners	812310	2.2	0.8	-1.4
Drycleaning and laundry services (except coin-operated)	812320	1.5	0.7	-0.8
Linen and uniform supply	81233	2.1	1.7	-0.5
Photofinishing	81292	-1.6	-3.1	-1.4

<sup>1</sup> Growth rates refer to 1988-2002 because no nonproduction workers were reported for this industry in 1987

**Table 4. Average concentration of supervisory (nonproduction) workers by industry, 1987-2002**

<b>Description</b>	<b>NAICS</b>	<b>1987-2002 Average Percent</b>
Food manufacturing	311	22
Animal food manufacturing	31111	35
Grain and oilseed milling	3112	28
Breakfast cereals	311230	15
Sugar and confectionery products	3113	19
Sugar	31131	20
Nonchocolate confectioneries	311340	20
Fruit and vegetable preserving and specialty	3114	17
Frozen food	31141	15
Frozen fruits, juices, and vegetables	311411	13
Frozen specialty foods	311412	17
Fruit and vegetable canning, pickling, and drying	31142	19
Fruit and vegetable canning	311421	20
Specialty canning	311422	15
Dried and dehydrated foods	311423	18
Dairy products	3115	33
Dairy products (except frozen)	31151	35
Fluid milk	311511	42
Ice cream and frozen desserts	311520	24
Animal slaughtering and processing	31161	14
Animal (except poultry) slaughtering	311611	13
Poultry processing	311615	10
Seafood product preparation and packaging	31171	17
Bakeries and tortilla manufacturing	3118	26
Bread and bakery products	31181	28
Retail bakeries	311811	13
Other food products	3119	31
Snack foods	31191	25
Beverages and tobacco products	312	44
Beverages	3121	48
Soft drinks and ice	31211	51
Soft drinks	312111	55
Tobacco and tobacco products	3122	25
Textile mills	313	16
Fiber, yarn, and thread mills	31311	14
Fabric mills	3132	15
Broadwoven fabric mills	313210	11
Textile and fabric finishing mills	3133	19
Broadwoven fabric finishing mills	313311	21
Textile product mills	314	19
Textile furnishings mills	3141	18
Carpet and rug mills	314110	22
Curtain and linen mills	31412	15
Other textile product mills	3149	21
Textile bag and canvas mills	31491	24
All other textile products	31499	19
Apparel	315	13
Apparel knitting mills	3151	14
Hosiery and sock mills	31511	14
Sheer hosiery mills	315111	14
Other hosiery and sock mills	315119	13
Other apparel knitting mills	31519	15
Cut and sew apparel	3152	12

**Table 4. Average concentration of supervisory (nonproduction) workers by industry, 1987-2002**

<b>Description</b>	<b>NAICS</b>	<b>1987-2002 Average Percent</b>
Cut and sew apparel contractors	31521	6
Men's and boys' cut and sew apparel contractors	315211	10
Women's, girls', and infants' cut and sew apparel contractors	315212	4
Men's and boys' cut and sew apparel	31522	15
Women's and girls' cut and sew apparel	31523	19
Other cut and sew apparel	31529	11
Apparel accessories and other apparel manufacturing	31599	18
Leather and allied products	316	16
Leather and allied product manufacturing	316110	20
Footwear manufacturing	31621	12
Other leather and allied product manufacturing	31699	20
Wood products	321	17
Sawmills and wood preservation	32111	13
Veneer, plywood, and engineered wood product manufacturing	32121	16
Reconstituted wood products	321219	15
Other wood products	3219	19
Millwork	32191	20
Wood windows and doors	321911	20
Wood containers and pallets	321920	14
All other wood products	32199	22
Manufactured homes (mobile homes)	321991	18
Paper and paper products	322	23
Pulp, paper, and paperboard mills	3221	23
Paperboard mills	322130	23
Converted paper products	3222	23
Paperboard containers	32221	23
Corrugated and solid fiber boxes	322211	25
Folding paperboard boxes	322212	19
Paper bags and coated and treated paper	32222	24
Stationery products	32223	23
Other converted paper products	32229	23
Printing and related support activities	3231	27
Printing	32311	28
Commercial lithographic printing	323110	28
Commercial gravure printing	323111	6
Commercial flexographic printing	323112	33
Commercial screen printing	323113	29
Quick printing	323114	28
Manifold business form printing	323116	28
Support activities for printing	32312	22
Petroleum and coal products	3241	35
Petroleum refineries	324110	39
Chemicals	325	40
Basic chemicals	3251	38
Synthetic dyes and pigments	32513	28
Other basic inorganic chemicals	32518	43
Other basic organic chemicals	32519	41
Resin, synthetic rubber, and artificial synthetic fibers and filaments	3252	31
Resin and synthetic rubber	32521	35
Plastics material and resin	325211	35
Synthetic rubber	325212	30
Artificial and synthetic fibers and filaments	32522	26
Noncellulosic organic fibers	325222	30

**Table 4. Average concentration of supervisory (nonproduction) workers by industry, 1987-2002**

Description	NAICS	1987-2002 Average Percent
Pesticides, fertilizers, and other agricultural chemicals	3253	32
Pharmaceuticals and medicine	32541	51
Pharmaceutical preparations	325412	53
Paint, coatings, and adhesives	3255	49
Paint and coatings	325510	55
Soaps, cleaning compounds, and toilet preparations	3256	37
Soaps and cleaning compounds	32561	42
Soaps and other detergents	325611	36
Toilet preparations	325620	30
Other chemical products and preparations	3259	37
Plastics and rubber products	326	21
Plastics products	3261	22
Plastics packaging materials and unlaminated film and sheets	32611	24
Unlaminated plastics film and sheets (except packaging)	326113	28
Plastics pipes, pipe fittings, and unlaminated profile shapes	32612	26
Unlaminated plastics profile shapes	326121	26
Plastics pipes and pipe fittings	326122	26
Other plastics products	32619	21
Rubber products	3262	21
Tires	32621	20
Rubber and plastics hoses and belting	326220	25
Other rubber products	32629	21
Rubber products for mechanical use	326291	22
All other rubber products	326299	20
Nonmetallic mineral products	327	22
Clay products and refractories	3271	20
Pottery, ceramics, and plumbing fixtures	32711	16
Clay building materials and refractories	32712	25
Glass and glass products	32721	20
Flat glass	327211	17
Other pressed and blown glass and glassware	327212	18
Glass containers	327213	13
Glass products made of purchased glass	327215	25
Cement and concrete products	3273	23
Ready-mix concrete	327320	20
Lime and gypsum products	3274	22
Other nonmetallic mineral products	3279	24
Primary metals	331	23
Iron and steel mills and ferroalloy production	33111	23
Steel products from purchased steel	3312	23
Iron and steel pipes and tubes from purchased steel	331210	23
Rolling and drawing of purchased steel	33122	23
Rolled steel shapes	331221	25
Alumina and aluminum production and processing	33131	25
Aluminum sheets, plates, and foil	331315	28
Nonferrous metal (except aluminum) production and processing	3314	26
Nonferrous metal (except aluminum) smelting and refining	33141	29
Copper rolling, drawing, extruding, and alloying	33142	25
Nonferrous metal (except copper and aluminum) rolling, drawing, extruding, and alloying	33149	27
Foundries	3315	20
Ferrous metal foundries	33151	21
Iron foundries	331511	21
Nonferrous metal foundries	33152	19

**Table 4. Average concentration of supervisory (nonproduction) workers by industry, 1987-2002**

Description	NAICS	1987-2002 Average Percent
Fabricated metal products	332	26
Forging and stamping	33211	25
Iron and steel forging	332111	24
Metal stamping	332116	25
Cutlery and handtools	33221	25
Hand and edge tools	332212	26
Architectural and structural metals	3323	27
Plate work and fabricated structural products	33231	27
Prefabricated metal building and components	332311	32
Fabricated structural metals	332312	26
Plate work	332313	26
Ornamental and architectural metal products	33232	27
Metal windows and doors	332321	30
Sheet metal work	332322	24
Ornamental and architectural metal work	332323	29
Boilers, tanks, and shipping containers	3324	24
Hardware	332510	26
Spring and wire products	33261	19
Machine shops; turned products; and screws, nuts, and bolts	3327	24
Machine shops	332710	25
Turned products and screws, nuts, and bolts	33272	24
Precision turned products	332721	21
Bolts, nuts, screws, rivets, and washers	332722	26
Coating, engraving, heat treating, and allied activities	33281	21
Electroplating, plating, polishing, anodizing and coloring	332813	21
Other fabricated metal products	3329	30
Metal valves	33291	30
Fluid power valves and hose fittings	332912	32
Plumbing fixture fittings and trim	332913	23
All other fabricated metal products	33299	30
Ball and roller bearings	332991	20
Machinery	333	34
Agriculture, construction, and mining machinery	3331	31
Agricultural implements	33311	26
Farm machinery and equipment	333111	29
Lawn and garden tractors and home lawn and garden equipment	333112	18
Construction machinery	333120	37
Mining and oil and gas field machinery	33313	30
Industrial machinery	3332	38
Semiconductor machinery	333295	53
Commercial and service industry machinery	33331	41
Office machinery	333313	58
Photographic and photocopying equipment	333315	34
HVAC and commercial refrigeration equipment	33341	28
Air-conditioning and warm air heating equipment and commercial and industrial refri	333415	25
Metalworking machinery	33351	29
Industrial molds	333511	24
Special dies and tools, die sets, jigs, and fixtures	333514	24
Turbine and power transmission equipment	33361	32
Turbines and turbine generator set units	333611	39
Other general purpose machinery	3339	39
Pumps and compressors	33391	43
Air and gas compressors	333912	44

**Table 4. Average concentration of supervisory (nonproduction) workers by industry, 1987-2002**

<b>Description</b>	<b>NAICS</b>	<b>1987-2002 Average Percent</b>
Material handling equipment	33392	37
Conveyor and conveying equipment	333922	39
Overhead traveling cranes, hoists, and monorail systems	333923	36
All other general purpose machinery	33399	38
Computer and electronic products	334	48
Computer and peripheral equipment	33411	65
Electronic computers	334111	66
Other computer peripheral equipment	334119	66
Communications equipment	3342	51
Telephone apparatus manufacturing	334210	54
Radio and television broadcasting and wireless communications equipment manufact	334220	52
Audio and video equipment manufacturing	334310	38
Semiconductors and electronic components	33441	39
Electron tubes	334411	31
Bare printed circuit boards	334412	26
Semiconductors and related devices	334413	54
Electronic capacitors	334414	25
Electronic connectors	334417	31
Printed circuit assemblies (electronic assemblies)	334418	23
Electronic instruments	33451	52
Electromedical and electrotherapeutic apparatuses	334510	60
Search, detection, navigation, guidance, aeronautical, and nautical systems and instru	334511	57
Automatic environmental controls for residential, commercial, and appliance use	334512	32
Instruments and related products for measuring, displaying, and controlling industrial	334513	46
Instruments for measuring and testing electricity and electrical signals	334515	51
Irradiation apparatuses	334517	60
Magnetic media manufacturing and reproduction	33461	17
Electrical equipment and appliances	335	27
Electric lighting equipment	3351	26
Electric lamp bulb and part manufacturing	335110	20
Lighting fixtures	33512	29
Household appliances	3352	17
Small electrical appliances	33521	27
Electric housewares and household fans	335211	27
Major appliances	33522	13
Electrical equipment	33531	29
Power, distribution, and specialty transformers	335311	32
Motors and generators	335312	20
Switchgear and switchboard apparatuses	335313	30
Relays and industrial controls	335314	39
Other electrical equipment and components	3359	30
Batteries	33591	24
Storage batteries	335911	21
Communication and energy wire and cable	33592	29
Fiber optic cables	335921	33
Other communication and energy wires	335929	27
Wiring devices	33593	32
Current-carrying wiring devices	335931	33
Noncurrent-carrying wiring devices	335932	27
All other electrical equipment and components	33599	32
Transportation equipment	336	28
Motor vehicles	3361	10
Automobiles and light duty motor vehicles	33611	9



**Table 4. Average concentration of supervisory (nonproduction) workers by industry, 1987-2002**

Description	NAICS	1987-2002 Average Percent
Automobiles	336111	11
Light trucks and utility vehicles	336112	6
Heavy duty truck manufacturing	336120	15
Motor vehicle bodies and trailers	33621	22
Motor vehicle bodies	336211	23
Truck trailers	336212	21
Motor homes	336213	20
Travel trailers and campers	336214	22
Motor vehicle parts	3363	19
Motor vehicle gasoline engines and engine parts	33631	21
Carburetors, pistons, piston rings, and valves	336311	20
Gasoline engines and engine parts	336312	21
Motor vehicle electrical and electronic equipment	33632	22
Vehicular lighting equipment	336321	24
Other motor vehicle electrical and electronic equipment	336322	22
Motor vehicle steering and suspension components (except spring) manufacturing	336330	17
Motor vehicle brake system manufacturing	336340	19
Motor vehicle transmission and power train parts manufacturing	336350	14
Motor vehicle seating and interior trim manufacturing	336360	20
Motor vehicle metal stamping	336370	17
Other motor vehicle parts	33639	20
All other motor vehicle parts	336399	19
Aerospace products and parts	33641	52
Aircraft	336411	53
Aircraft engines and engine parts	336412	42
Other aircraft parts and auxiliary equipment	336413	38
Railroad rolling stock manufacturing	336510	19
Ship and boat building	33661	18
Ship building and repairing	336611	19
Boat building	336612	18
Other transportation equipment	33699	30
Furniture and related products	337	21
Household and institutional furniture and kitchen cabinets	3371	18
Wood kitchen cabinets and countertops	337110	20
Household and institutional furniture	33712	17
Upholstered household furniture	337121	16
Nonupholstered wood household furniture	337122	15
Office furniture (including fixtures)	33721	27
Office furniture (except wood)	337214	30
Showcases, partitions, shelving, and lockers	337215	26
Other furniture related products	3379	24
Miscellaneous manufacturing	339	30
Medical equipment and supplies	33911	35
Surgical and medical instruments	339112	44
Surgical appliances and supplies	339113	30
Dental laboratories	339116	17
Other miscellaneous manufacturing	3399	26
Jewelry and silverware	33991	26
Sporting and athletic goods	339920	20
Dolls, toys, and games	33993	30
Office supplies (except paper)	33994	30
Signs	339950	32
All other miscellaneous manufacturing	33999	26

**Table 4. Average concentration of supervisory (nonproduction) workers by industry, 1987-2002**

<b>Description</b>	<b>NAICS</b>	<b>1987-2002 Average Percent</b>
Durable goods	423	19
Motor vehicles and parts	4231	17
Furniture and furnishings	4232	17
Lumber and construction supplies	4233	19
Commercial equipment	4234	16
Metals and minerals	4235	20
Electrical and electronic goods	4236	25
Hardware and plumbing	4237	21
Machinery and supplies	4238	21
Miscellaneous durable goods	4239	15
Nondurable Goods	424	19
Paper and paper products	4241	25
Druggists' goods	424210	25
Apparel and piece goods	4243	24
Grocery and related products	4244	16
Farm product raw materials	4245	17
Chemicals	4246	24
Petroleum	4247	21
Alcoholic beverages	4248	16
Miscellaneous nondurable goods	4249	17
Wholesale electronic markets and agents and brokers	4251	20
Business to business electronic markets	425110	12
Wholesale trade agents and brokers	425120	21
Motor vehicle and parts dealers	441	18
Automobile dealers	4411	18
New car dealers	441110	17
Used car dealers	441120	23
Other motor vehicle dealers	4412	20
Recreational vehicle dealers	441210	17
Motorcycle, boat, and other motor vehicle dealers	44122	20
Automotive parts, accessories, and tire stores	4413	17
Automotive parts and accessories stores	441310	16
Tire dealers	441320	21
Furniture and home furnishings stores	442	17
Furniture stores	442110	16
Home furnishings stores	4422	17
Floor covering stores	442210	19
Other home furnishings stores	44229	16
Electronics and appliance stores	4431	16
Appliance, television, and other electronics stores	44311	16
Household appliance stores	443111	14
Radio, television, and other electronics stores	443112	17
Building material and garden supply stores	444	18
Building material and supplies dealers	4441	19
Home centers	444110	19
Paint and wallpaper stores	444120	26
Hardware stores	444130	17
Other building material dealers	444190	18
Lawn and garden equipment and supplies stores	4442	17
Outdoor power equipment stores	444210	16
Nursery, garden center, and farm supply stores	444220	17
Food and beverage stores	445	9
Grocery stores	4451	8

**Table 4. Average concentration of supervisory (nonproduction) workers by industry, 1987-2002**

<b>Description</b>	<b>NAICS</b>	<b>1987-2002 Average Percent</b>
Supermarkets and other grocery (except convenience) stores	445110	8
Convenience stores	445120	8
Specialty food stores	4452	14
Fruit and vegetable markets	445230	10
Other specialty food stores	44529	15
Beer, wine, and liquor stores	445310	15
Health and personal care stores	4461	18
Pharmacies and drug stores	446110	18
Cosmetics, beauty supplies, and perfume stores	446120	15
Optical goods stores	446130	23
Other health and personal care stores	44619	15
Food (health) supplement stores	446191	16
All other health and personal care stores	446199	13
Gasoline stations	4471	13
Gasoline stations with convenience stores	447110	13
Other gasoline stations	447190	14
Clothing and clothing accessories stores	448	18
Clothing stores	4481	17
Men's clothing stores	448110	22
Women's clothing stores	448120	18
Children's and infants' clothing stores	448130	11
Family clothing stores	448140	14
Clothing accessories stores	448150	23
Other clothing stores	448190	19
Shoe stores	448210	20
Jewelry, luggage, and leather goods stores	4483	23
Sporting goods, hobby, book, and music stores	451	16
Sporting goods, hobby, and musical instrument stores	4511	15
Sporting goods stores	451110	16
Hobby, toy, and game stores	451120	11
Sewing, needlework, and piece goods stores	451130	12
Musical instrument and supplies stores	451140	23
Book, periodical, and music stores	4512	18
Book stores and news dealers	45121	16
Prerecorded tape, compact disc, and record stores	451220	20
General merchandise stores	452	6
Department stores	45211	7
Department stores (except discount department stores)	452111	9
Discount department stores	452112	4
Other general merchandise stores	4529	6
Warehouse clubs and supercenters	452910	3
All other general merchandise stores	452990	11
Miscellaneous store retailers	453	14
Florists	453110	11
Office supplies, stationery, and gift stores	4532	14
Office supplies and stationery stores	453210	18
Gift, novelty, and souvenir stores	453220	12
Used merchandise stores	453310	12
Other miscellaneous store retailers	4539	16
Pet and pet supplies stores	453910	15
Art dealers	453920	15
Manufactured (mobile) home dealers	453930	18
All other miscellaneous store retailers	45399	15

**Table 4. Average concentration of supervisory (nonproduction) workers by industry, 1987-2002**

<b>Description</b>	<b>NAICS</b>	<b>1987-2002 Average Percent</b>
Nonstore retailers	454	10
Electronic shopping and mail order houses	45411	11
Vending machine operators	454210	15
Direct selling establishments	4543	8
Fuel dealers	45431	15
Heating oil dealers	454311	16
Other direct selling establishments	454390	5
General freight trucking, long-distance	48412	17
Publishing	511	41
Newspaper, periodical, book, and directory publishers	5111	46
Newspaper publishers	511110	49
Periodical publishers	511120	53
Book publishers	511130	33
Database and directory publishers	511140	26
Other publishers	51119	32
Software publishers	511210	21
Motion picture and video exhibition	51213	13
Broadcasting, except Internet	515	21
Radio and television broadcasting	5151	18
Radio broadcasting	51511	18
Television broadcasting	515120	19
Cable and other subscription programming	515210	29
Wired telecommunications carriers	517110	26
Wireless telecommunications carriers (except satellite)	51721	37
Cable and other program distribution	517510	20
Commercial banking	522110	28
Passenger car rental	532111	16
Truck, utility trailer, and rv (recreational vehicle) rental and leasing	532120	20
Video tape and disc rental	532230	17
Tax preparation services	541213	9
Advertising agencies	541810	31
Photography studios, portrait	541921	5
Travel agencies	561510	24
Janitorial services	561720	8
Traveler accommodation	7211	12
Hotels (except casino hotels) and motels	721110	12
Casino hotels	721120	12
Other traveler accommodation	72119	14
Bed-and-breakfast inns	721191	10
All other traveler accommodation	721199	22
Food services and drinking places	722	11
Full-service restaurants	722110	10
Limited-service eating places	72221	11
Special food services	7223	12
Drinking places (alcoholic beverages)	722410	13
Automotive repair and maintenance	8111	15
Hair, nail, and skin care services	81211	6
Funeral homes and funeral services	812210	20
Drycleaning and laundry services	8123	11
Coin-operated laundries and drycleaners	812310	9
Drycleaning and laundry services (except coin-operated)	812320	10
Linen and uniform supply	81233	12
Photofinishing	81292	12

**Table 5. Comparison of average annual percentage growth rates of all employee hours, 1987-2002**

<b>Description</b>	<b>NAICS</b>	<b>Old</b>	<b>New</b>	<b>New - Old</b>
Food manufacturing	311	0.5	0.6	0.1
Animal food manufacturing	31111	-0.8	-1.2	-0.3
Grain and oilseed milling	3112	-1.0	-1.1	0.0
Breakfast cereals	311230	-0.6	-0.6	-0.1
Sugar and confectionery products	3113	-0.4	-0.2	0.2
Sugar	31131	-1.3	-1.0	0.3
Nonchocolate confectioneries	311340	-0.2	0.0	0.1
Fruit and vegetable preserving and specialty	3114	-0.2	0.0	0.2
Frozen food	31141	1.2	1.4	0.2
Frozen fruits, juices, and vegetables	311411	-0.4	-0.2	0.2
Frozen specialty foods	311412	2.5	2.5	0.0
Fruit and vegetable canning, pickling, and drying	31142	-1.4	-1.2	0.2
Fruit and vegetable canning	311421	-0.9	-0.7	0.2
Specialty canning	311422	-3.2	-3.1	0.1
Dried and dehydrated foods	311423	-1.4	-1.3	0.1
Dairy products	3115	-0.7	-0.6	0.1
Dairy products (except frozen)	31151	-0.8	-0.7	0.1
Fluid milk	311511	-1.7	-1.6	0.1
Ice cream and frozen desserts	311520	0.0	0.0	0.0
Animal slaughtering and processing	31161	2.1	2.0	0.0
Animal (except poultry) slaughtering	311611	1.0	1.0	0.0
Poultry processing	311615	3.0	3.0	0.0
Seafood product preparation and packaging	31171	-1.1	-1.2	-0.1
Bakeries and tortilla manufacturing	3118	0.1	0.2	0.1
Bread and bakery products	31181	-0.3	-0.2	0.1
Retail bakeries	311811	1.4	1.2	-0.1
Other food products	3119	1.1	1.2	0.1
Snack foods	31191	0.9	1.2	0.3
Beverages and tobacco products	312	-0.9	-0.9	0.0
Beverages	3121	-0.5	-0.6	-0.1
Soft drinks and ice	31211	-0.7	-0.5	0.1
Soft drinks	312111	-1.3	-1.2	0.1
Tobacco and tobacco products	3122	-2.6	-2.5	0.0
Textile mills	313	-4.0	-4.0	0.0
Fiber, yarn, and thread mills	31311	-4.0	-4.1	-0.1
Fabric mills	3132	-4.6	-4.5	0.0
Broadwoven fabric mills	313210	-5.5	-5.5	0.0
Textile and fabric finishing mills	3133	-2.6	-2.7	0.0
Broadwoven fabric finishing mills	313311	-1.9	-1.9	0.0
Textile product mills	314	-0.3	-0.3	0.0
Textile furnishings mills	3141	-0.3	-0.2	0.0
Carpet and rug mills	314110	0.8	0.9	0.0
Curtain and linen mills	31412	-1.2	-1.2	0.0
Other textile product mills	3149	-0.4	-0.5	-0.1
Textile bag and canvas mills	31491	0.2	0.2	0.0
All other textile products	31499	-0.8	-1.0	-0.2
Apparel	315	-6.4	-6.4	0.0
Apparel knitting mills	3151	-5.7	-5.7	0.0
Hosiery and sock mills	31511	-4.1	-4.1	0.0
Sheer hosiery mills	315111	-6.4	-6.3	0.1
Other hosiery and sock mills	315119	-2.2	-2.3	-0.1
Other apparel knitting mills	31519	-7.7	-7.7	0.0
Cut and sew apparel	3152	-6.7	-6.7	0.0

**Table 5. Comparison of average annual percentage growth rates of all employee hours, 1987-2002**

<b>Description</b>	<b>NAICS</b>	<b>Old</b>	<b>New</b>	<b>New - Old</b>
Cut and sew apparel contractors	31521	-6.2	-6.1	0.0
Men's and boys' cut and sew apparel contractors	315211	-7.4	-7.4	0.0
Women's, girls', and infants' cut and sew apparel contractors	315212	-5.6	-5.6	0.0
Men's and boys' cut and sew apparel	31522	-7.7	-7.6	0.1
Women's and girls' cut and sew apparel	31523	-7.0	-7.0	0.1
Other cut and sew apparel	31529	-5.5	-5.5	0.0
Apparel accessories and other apparel manufacturing	31599	-2.6	-2.6	0.0
Leather and allied products	316	-6.8	-6.9	-0.1
Leather and allied product manufacturing	316110	-3.5	-3.7	-0.1
Footwear manufacturing	31621	-9.1	-9.1	-0.1
Other leather and allied product manufacturing	31699	-4.2	-4.3	-0.1
Wood products	321	-0.3	-0.3	0.0
Sawmills and wood preservation	32111	-1.6	-1.5	0.0
Veneer, plywood, and engineered wood product manufacturing	32121	0.8	0.8	0.0
Reconstituted wood products	321219	1.6	1.6	0.0
Other wood products	3219	0.0	-0.1	-0.1
Millwork	32191	0.3	0.2	0.0
Wood windows and doors	321911	0.9	0.9	0.0
Wood containers and pallets	321920	0.8	0.8	0.0
All other wood products	32199	-0.8	-1.0	-0.2
Manufactured homes (mobile homes)	321991	-0.1	-0.4	-0.2
Paper and paper products	322	-1.1	-1.1	0.0
Pulp, paper, and paperboard mills	3221	-2.7	-2.7	-0.1
Paperboard mills	322130	-2.2	-2.3	-0.1
Converted paper products	3222	-0.3	-0.2	0.0
Paperboard containers	32221	0.0	0.0	0.1
Corrugated and solid fiber boxes	322211	0.6	0.7	0.0
Folding paperboard boxes	322212	-1.3	-1.2	0.1
Paper bags and coated and treated paper	32222	-0.1	-0.1	0.0
Stationery products	32223	-1.5	-1.5	0.0
Other converted paper products	32229	-0.4	-0.4	0.0
Printing and related support activities	3231	-0.5	-0.4	0.1
Printing	32311	-0.3	-0.2	0.1
Commercial lithographic printing	323110	-0.3	-0.2	0.1
Commercial gravure printing	323111	0.9	1.0	0.1
Commercial flexographic printing	323112	-0.8	-0.6	0.2
Commercial screen printing	323113	0.6	0.7	0.1
Quick printing	323114	0.7	0.7	0.1
Manifold business form printing	323116	-3.0	-3.0	0.0
Support activities for printing	32312	-2.1	-2.0	0.1
Petroleum and coal products	3241	-2.0	-2.1	-0.1
Petroleum refineries	324110	-2.8	-2.8	0.0
Chemicals	325	-0.4	-0.3	0.1
Basic chemicals	3251	-2.1	-2.1	0.0
Synthetic dyes and pigments	32513	-1.9	-1.7	0.1
Other basic inorganic chemicals	32518	-3.2	-3.1	0.1
Other basic organic chemicals	32519	-1.6	-1.6	0.0
Resin, synthetic rubber, and artificial synthetic fibers and filaments	3252	-1.8	-1.8	0.0
Resin and synthetic rubber	32521	-0.6	-0.5	0.0
Plastics material and resin	325211	-0.6	-0.6	0.1
Synthetic rubber	325212	-0.4	-0.4	0.0
Artificial and synthetic fibers and filaments	32522	-3.6	-3.8	-0.1
Noncellulosic organic fibers	325222	-4.5	-4.7	-0.2

**Table 5. Comparison of average annual percentage growth rates of all employee hours, 1987-2002**

<b>Description</b>	<b>NAICS</b>	<b>Old</b>	<b>New</b>	<b>New - Old</b>
Pesticides, fertilizers, and other agricultural chemicals	3253	-0.9	-1.0	0.0
Pharmaceuticals and medicine	32541	3.3	3.7	0.5
Pharmaceutical preparations	325412	3.1	3.6	0.5
Paint, coatings, and adhesives	3255	-1.0	-1.0	0.0
Paint and coatings	325510	-1.8	-1.7	0.0
Soaps, cleaning compounds, and toilet preparations	3256	-0.3	-0.3	0.0
Soaps and cleaning compounds	32561	-0.9	-1.1	-0.1
Soaps and other detergents	325611	-1.0	-1.0	0.0
Toilet preparations	325620	0.5	0.6	0.1
Other chemical products and preparations	3259	-2.1	-2.1	0.0
Plastics and rubber products	326	0.5	0.5	0.0
Plastics products	3261	0.9	0.9	0.0
Plastics packaging materials and unlaminated film and sheets	32611	0.9	0.9	0.0
Unlaminated plastics film and sheets (except packaging)	326113	1.1	1.2	0.1
Plastics pipes, pipe fittings, and unlaminated profile shapes	32612	0.4	0.5	0.1
Unlaminated plastics profile shapes	326121	-0.4	-0.2	0.2
Plastics pipes and pipe fittings	326122	1.3	1.3	0.0
Other plastics products	32619	0.7	0.7	0.0
Rubber products	3262	-0.9	-0.9	0.0
Tires	32621	-1.1	-1.2	0.0
Rubber and plastics hoses and belting	326220	0.4	0.3	-0.1
Other rubber products	32629	-1.0	-1.0	0.0
Rubber products for mechanical use	326291	-0.4	-0.5	-0.1
All other rubber products	326299	-1.9	-1.8	0.1
Nonmetallic mineral products	327	0.0	0.0	0.0
Clay products and refractories	3271	-1.1	-1.2	0.0
Pottery, ceramics, and plumbing fixtures	32711	-0.9	-0.9	0.0
Clay building materials and refractories	32712	-1.3	-1.4	-0.1
Glass and glass products	32721	-0.8	-0.8	0.0
Flat glass	327211	-1.8	-2.0	-0.2
Other pressed and blown glass and glassware	327212	-0.2	-0.2	0.1
Glass containers	327213	-4.5	-4.4	0.0
Glass products made of purchased glass	327215	1.3	1.4	0.1
Cement and concrete products	3273	1.2	1.3	0.1
Ready-mix concrete	327320	1.8	2.0	0.2
Lime and gypsum products	3274	-0.9	-1.0	-0.1
Other nonmetallic mineral products	3279	-0.6	-0.7	-0.1
Primary metals	331	-1.9	-1.9	0.0
Iron and steel mills and ferroalloy production	33111	-3.3	-3.2	0.1
Steel products from purchased steel	3312	-0.5	-0.5	0.0
Iron and steel pipes and tubes from purchased steel	331210	0.8	0.8	0.0
Rolling and drawing of purchased steel	33122	-1.3	-1.3	0.0
Rolled steel shapes	331221	-1.5	-1.5	0.0
Alumina and aluminum production and processing	33131	-2.2	-2.3	-0.1
Aluminum sheets, plates, and foil	331315	-3.2	-3.5	-0.3
Nonferrous metal (except aluminum) production and processing	3314	-1.9	-1.9	0.0
Nonferrous metal (except aluminum) smelting and refining	33141	-2.0	-1.8	0.2
Copper rolling, drawing, extruding, and alloying	33142	-2.1	-2.1	0.0
Nonferrous metal (except copper and aluminum) rolling, drawing, extruding	33149	-1.6	-1.7	-0.1
Foundries	3315	-1.2	-1.2	0.0
Ferrous metal foundries	33151	-1.7	-1.7	0.0
Iron foundries	331511	-2.0	-2.0	0.0
Nonferrous metal foundries	33152	-0.5	-0.5	0.0

**Table 5. Comparison of average annual percentage growth rates of all employee hours, 1987-2002**

<b>Description</b>	<b>NAICS</b>	<b>Old</b>	<b>New</b>	<b>New - Old</b>
Fabricated metal products	332	-0.1	-0.1	0.0
Forging and stamping	33211	-1.1	-1.1	0.0
Iron and steel forging	332111	-1.0	-1.0	0.0
Metal stamping	332116	-2.0	-2.0	-0.1
Cutlery and handtools	33221	-1.3	-1.2	0.0
Hand and edge tools	332212	-1.4	-1.4	0.0
Architectural and structural metals	3323	0.8	0.8	0.0
Plate work and fabricated structural products	33231	0.8	0.7	0.0
Prefabricated metal building and components	332311	1.3	1.2	-0.2
Fabricated structural metals	332312	0.8	0.9	0.0
Plate work	332313	0.3	0.2	0.0
Ornamental and architectural metal products	33232	0.8	0.9	0.0
Metal windows and doors	332321	0.2	0.3	0.1
Sheet metal work	332322	1.4	1.4	0.1
Ornamental and architectural metal work	332323	0.8	0.8	-0.1
Boilers, tanks, and shipping containers	3324	-1.1	-1.1	0.0
Hardware	332510	-2.4	-2.4	0.0
Spring and wire products	33261	-0.8	-0.9	0.0
Machine shops; turned products; and screws, nuts, and bolts	3327	0.6	0.6	0.0
Machine shops	332710	1.2	1.2	0.0
Turned products and screws, nuts, and bolts	33272	-0.8	-0.8	0.0
Precision turned products	332721	-0.6	-0.6	0.0
Bolts, nuts, screws, rivets, and washers	332722	-0.9	-1.0	-0.1
Coating, engraving, heat treating, and allied activities	33281	0.6	0.5	0.0
Electroplating, plating, polishing, anodizing and coloring	332813	-0.2	-0.3	0.0
Other fabricated metal products	3329	-0.8	-0.8	0.0
Metal valves	33291	-1.1	-1.1	-0.1
Fluid power valves and hose fittings	332912	0.0	0.0	0.0
Plumbing fixture fittings and trim	332913	-1.6	-1.6	0.0
All other fabricated metal products	33299	-0.6	-0.6	0.0
Ball and roller bearings	332991	-0.8	-0.9	0.0
Machinery	333	-0.9	-0.9	0.0
Agriculture, construction, and mining machinery	3331	-0.6	-0.5	0.2
Agricultural implements	33311	-0.6	-0.6	0.0
Farm machinery and equipment	333111	-0.8	-0.9	-0.1
Lawn and garden tractors and home lawn and garden equipment	333112	-0.1	0.0	0.0
Construction machinery	333120	-1.2	-1.5	-0.3
Mining and oil and gas field machinery	33313	0.7	0.8	0.1
Industrial machinery	3332	-0.8	-0.7	0.1
Semiconductor machinery	333295	1.3	1.3	0.0
Commercial and service industry machinery	33331	-1.0	-1.1	-0.1
Office machinery	333313	-2.9	-3.1	-0.2
Photographic and photocopying equipment	333315	-3.9	-4.2	-0.2
HVAC and commercial refrigeration equipment	33341	-0.2	-0.2	0.0
Air-conditioning and warm air heating equipment and commercial and	333415	0.1	0.1	0.0
Metalworking machinery	33351	-1.3	-1.4	-0.1
Industrial molds	333511	-0.6	-0.6	0.0
Special dies and tools, die sets, jigs, and fixtures	333514	-1.0	-1.1	-0.1
Turbine and power transmission equipment	33361	-0.8	-0.8	0.0
Turbines and turbine generator set units	333611	1.2	1.7	0.6
Other general purpose machinery	3339	-0.9	-1.0	-0.1
Pumps and compressors	33391	0.5	0.7	0.2
Air and gas compressors	333912	0.9	1.2	0.3



**Table 5. Comparison of average annual percentage growth rates of all employee hours, 1987-2002**

<b>Description</b>	<b>NAICS</b>	<b>Old</b>	<b>New</b>	<b>New - Old</b>
Material handling equipment	33392	-0.7	-0.8	-0.1
Conveyor and conveying equipment	333922	-0.2	-0.2	0.0
Overhead traveling cranes, hoists, and monorail systems	333923	-1.3	-1.2	0.1
All other general purpose machinery	33399	-1.5	-1.7	-0.2
Computer and electronic products	334	-2.0	-2.0	0.0
Computer and peripheral equipment	33411	-3.1	-3.4	-0.3
Electronic computers	334111	-4.4	-4.7	-0.4
Other computer peripheral equipment	334119	-0.8	-0.6	0.2
Communications equipment	3342	-2.0	-2.0	0.0
Telephone apparatus manufacturing	334210	-4.0	-4.3	-0.3
Radio and television broadcasting and wireless communications equipment	334220	-1.3	-1.3	0.0
Audio and video equipment manufacturing	334310	-2.6	-2.6	-0.1
Semiconductors and electronic components	33441	-0.9	-0.9	0.0
Electron tubes	334411	-7.2	-7.2	0.0
Bare printed circuit boards	334412	-0.7	-0.7	-0.1
Semiconductors and related devices	334413	0.2	0.2	0.0
Electronic capacitors	334414	-4.3	-4.3	0.0
Electronic connectors	334417	1.8	2.0	0.1
Printed circuit assemblies (electronic assemblies)	334418	-1.2	-1.2	0.0
Electronic instruments	33451	-2.7	-2.8	-0.1
Electromedical and electrotherapeutic apparatuses	334510	4.3	3.8	-0.5
Search, detection, navigation, guidance, aeronautical, and nautical systems	334511	-5.4	-5.5	-0.1
Automatic environmental controls for residential, commercial, and applications	334512	-1.3	-1.3	0.0
Instruments and related products for measuring, displaying, and controlling	334513	0.5	0.3	-0.2
Instruments for measuring and testing electricity and electrical signals	334515	-4.0	-4.0	0.0
Irradiation apparatuses	334517	1.0	1.2	0.2
Magnetic media manufacturing and reproduction	33461	0.9	1.0	0.1
Electrical equipment and appliances	335	-2.4	-2.1	0.2
Electric lighting equipment	3351	-1.0	-1.0	0.1
Electric lamp bulb and part manufacturing	335110	-3.1	-3.1	0.1
Lighting fixtures	33512	-0.2	-0.1	0.1
Household appliances	3352	-2.1	-2.2	-0.1
Small electrical appliances	33521	-3.4	-3.4	0.0
Electric housewares and household fans	335211	-4.2	-4.2	0.0
Major appliances	33522	-1.6	-1.6	0.0
Electrical equipment	33531	-2.7	-2.6	0.0
Power, distribution, and specialty transformers	335311	-3.8	-3.9	-0.1
Motors and generators	335312	-2.8	-2.8	0.0
Switchgear and switchboard apparatuses	335313	-2.0	-2.0	0.0
Relays and industrial controls	335314	-2.2	-2.1	0.1
Other electrical equipment and components	3359	-2.8	-1.9	0.9
Batteries	33591	-1.6	-1.6	0.0
Storage batteries	335911	-3.0	-3.0	0.0
Communication and energy wire and cable	33592	-0.3	-0.2	0.0
Fiber optic cables	335921	2.8	2.8	0.0
Other communication and energy wires	335929	-2.5	-2.5	0.0
Wiring devices	33593	-2.2	-2.2	0.1
Current-carrying wiring devices	335931	-2.6	-2.5	0.1
Noncurrent-carrying wiring devices	335932	-0.5	-0.6	-0.1
All other electrical equipment and components	33599	-2.6	-2.7	-0.1
Transportation equipment	336	-1.1	-1.0	0.0
Motor vehicles	3361	-0.9	-0.8	0.1
Automobiles and light duty motor vehicles	33611	-0.9	-0.8	0.1

**Table 5. Comparison of average annual percentage growth rates of all employee hours, 1987-2002**

<b>Description</b>	<b>NAICS</b>	<b>Old</b>	<b>New</b>	<b>New - Old</b>
Automobiles	336111	-1.3	-1.2	0.1
Light trucks and utility vehicles	336112	0.0	0.1	0.1
Heavy duty truck manufacturing	336120	-1.0	-0.9	0.0
Motor vehicle bodies and trailers	33621	0.6	0.6	0.1
Motor vehicle bodies	336211	0.1	0.2	0.0
Truck trailers	336212	-0.1	0.1	0.1
Motor homes	336213	-0.1	-0.2	0.0
Travel trailers and campers	336214	2.6	2.7	0.1
Motor vehicle parts	3363	1.0	1.0	0.1
Motor vehicle gasoline engines and engine parts	33631	0.3	0.3	0.0
Carburetors, pistons, piston rings, and valves	336311	-3.1	-3.2	0.0
Gasoline engines and engine parts	336312	1.6	1.7	0.0
Motor vehicle electrical and electronic equipment	33632	-0.4	-0.4	0.0
Vehicular lighting equipment	336321	-0.8	-0.9	-0.1
Other motor vehicle electrical and electronic equipment	336322	-0.4	-0.3	0.1
Motor vehicle steering and suspension components (except spring) man	336330	1.6	1.7	0.1
Motor vehicle brake system manufacturing	336340	1.6	1.7	0.1
Motor vehicle transmission and power train parts manufacturing	336350	1.6	1.7	0.1
Motor vehicle seating and interior trim manufacturing	336360	1.8	1.7	-0.1
Motor vehicle metal stamping	336370	1.0	1.2	0.1
Other motor vehicle parts	33639	1.3	1.3	0.0
All other motor vehicle parts	336399	1.5	1.5	0.0
Aerospace products and parts	33641	-3.7	-3.7	0.1
Aircraft	336411	-3.4	-3.4	0.0
Aircraft engines and engine parts	336412	-3.5	-3.4	0.2
Other aircraft parts and auxiliary equipment	336413	-2.3	-2.3	0.0
Railroad rolling stock manufacturing	336510	-1.0	-1.0	0.0
Ship and boat building	33661	-1.3	-1.3	0.0
Ship building and repairing	336611	-1.6	-1.6	0.0
Boat building	336612	-0.6	-0.7	-0.1
Other transportation equipment	33699	0.5	0.6	0.0
Furniture and related products	337	-0.1	-0.1	0.0
Household and institutional furniture and kitchen cabinets	3371	-0.1	-0.2	0.0
Wood kitchen cabinets and countertops	337110	2.5	2.6	0.1
Household and institutional furniture	33712	-1.3	-1.4	-0.1
Upholstered household furniture	337121	-1.1	-1.2	-0.1
Nonupholstered wood household furniture	337122	-1.8	-1.8	-0.1
Office furniture (including fixtures)	33721	-0.2	-0.3	-0.1
Office furniture (except wood)	337214	-0.6	-0.8	-0.2
Showcases, partitions, shelving, and lockers	337215	0.0	-0.1	0.0
Other furniture related products	3379	1.0	1.0	0.0
Miscellaneous manufacturing	339	0.3	0.4	0.1
Medical equipment and supplies	33911	1.1	1.3	0.2
Surgical and medical instruments	339112	1.2	1.5	0.3
Surgical appliances and supplies	339113	0.9	1.0	0.1
Dental laboratories	339116	3.6	3.7	0.2
Other miscellaneous manufacturing	3399	-0.3	-0.2	0.1
Jewelry and silverware	33991	-2.9	-2.9	-0.1
Sporting and athletic goods	339920	1.4	1.5	0.1
Dolls, toys, and games	33993	-4.0	-3.9	0.1
Office supplies (except paper)	33994	-1.4	-1.4	0.0
Signs	339950	2.4	2.6	0.2
All other miscellaneous manufacturing	33999	0.2	0.2	0.0

**Table 5. Comparison of average annual percentage growth rates of all employee hours, 1987-2002**

<b>Description</b>	<b>NAICS</b>	<b>Old</b>	<b>New</b>	<b>New - Old</b>
Durable goods	423	0.4	0.4	0.0
Motor vehicles and parts	4231	0.1	0.0	-0.1
Furniture and furnishings	4232	0.6	0.6	0.0
Lumber and construction supplies	4233	1.3	1.3	0.0
Commercial equipment	4234	0.6	0.6	-0.1
Metals and minerals	4235	0.3	0.3	0.0
Electrical and electronic goods	4236	0.1	0.1	0.0
Hardware and plumbing	4237	0.9	1.0	0.1
Machinery and supplies	4238	0.1	0.1	0.0
Miscellaneous durable goods	4239	0.5	0.5	0.0
Nondurable Goods	424	0.6	0.6	0.0
Paper and paper products	4241	0.2	0.1	-0.1
Druggists' goods	424210	3.2	3.2	-0.1
Apparel and piece goods	4243	0.1	0.2	0.1
Grocery and related products	4244	1.1	1.2	0.1
Farm product raw materials	4245	-2.8	-3.1	-0.3
Chemicals	4246	1.0	1.1	0.0
Petroleum	4247	-2.5	-2.5	-0.1
Alcoholic beverages	4248	0.9	1.0	0.1
Miscellaneous nondurable goods	4249	0.5	0.4	0.0
Wholesale electronic markets and agents and brokers	4251	1.4	1.3	-0.1
Business to business electronic markets	425110	0.3	0.2	-0.1
Wholesale trade agents and brokers	425120	1.5	1.4	-0.1
Motor vehicle and parts dealers	441	1.3	1.2	0.0
Automobile dealers	4411	1.4	1.4	-0.1
New car dealers	441110	1.3	1.3	0.0
Used car dealers	441120	2.3	2.1	-0.3
Other motor vehicle dealers	4412	1.9	1.8	-0.1
Recreational vehicle dealers	441210	2.7	2.6	-0.1
Motorcycle, boat, and other motor vehicle dealers	44122	1.7	1.6	-0.1
Automotive parts, accessories, and tire stores	4413	0.7	0.7	0.0
Automotive parts and accessories stores	441310	0.5	0.4	-0.1
Tire dealers	441320	1.3	1.3	0.1
Furniture and home furnishings stores	442	1.1	1.0	-0.1
Furniture stores	442110	0.9	0.8	-0.1
Home furnishings stores	4422	1.4	1.3	-0.2
Floor covering stores	442210	0.5	0.5	-0.1
Other home furnishings stores	44229	2.3	2.1	-0.2
Electronics and appliance stores	4431	1.8	1.7	-0.1
Appliance, television, and other electronics stores	44311	1.4	1.3	-0.1
Household appliance stores	443111	-1.9	-2.0	-0.1
Radio, television, and other electronics stores	443112	3.1	3.0	-0.2
Building material and garden supply stores	444	1.8	1.8	0.0
Building material and supplies dealers	4441	2.1	2.1	0.0
Home centers	444110	3.9	3.9	0.0
Paint and wallpaper stores	444120	-1.2	-1.4	-0.1
Hardware stores	444130	-1.0	-1.1	-0.1
Other building material dealers	444190	1.9	2.0	0.0
Lawn and garden equipment and supplies stores	4442	0.1	0.0	0.0
Outdoor power equipment stores	444210	-0.2	-0.3	-0.1
Nursery, garden center, and farm supply stores	444220	0.1	0.1	0.0
Food and beverage stores	445	0.5	0.5	0.0
Grocery stores	4451	0.6	0.5	0.0

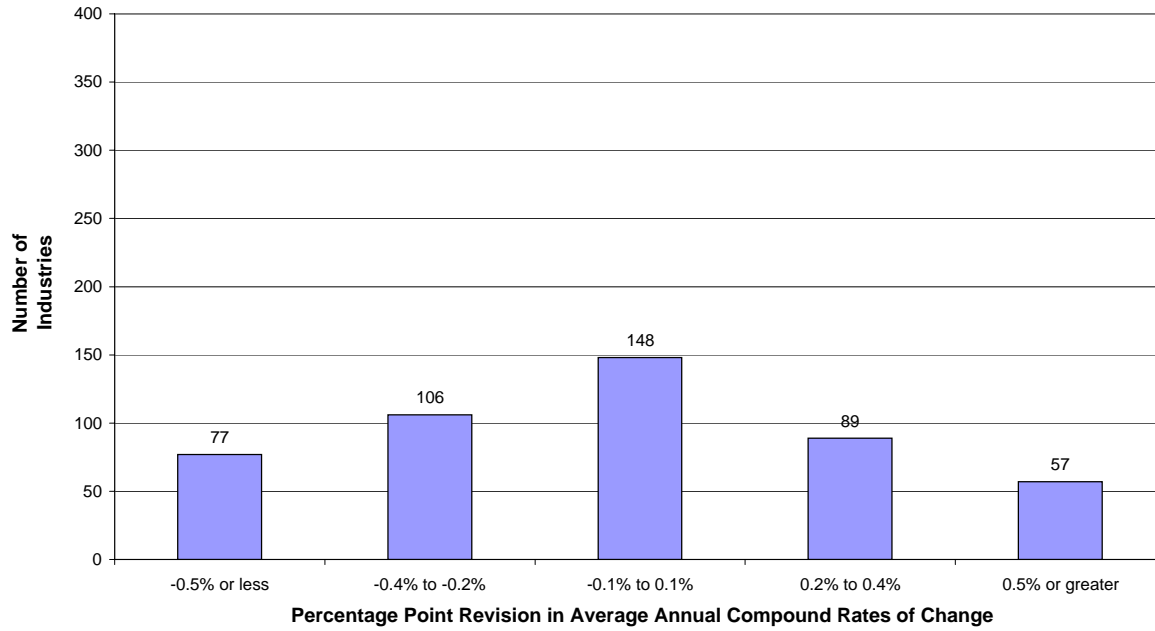
**Table 5. Comparison of average annual percentage growth rates of all employee hours, 1987-2002**

<b>Description</b>	<b>NAICS</b>	<b>Old</b>	<b>New</b>	<b>New - Old</b>
Supermarkets and other grocery (except convenience) stores	445110	0.7	0.7	0.0
Convenience stores	445120	-1.0	-1.2	-0.1
Specialty food stores	4452	0.7	0.7	0.0
Fruit and vegetable markets	445230	0.9	0.9	0.0
Other specialty food stores	44529	1.6	1.7	0.0
Beer, wine, and liquor stores	445310	-0.7	-0.9	-0.2
Health and personal care stores	4461	1.6	1.5	-0.1
Pharmacies and drug stores	446110	0.9	0.8	-0.1
Cosmetics, beauty supplies, and perfume stores	446120	3.9	4.0	0.1
Optical goods stores	446130	2.4	2.5	0.1
Other health and personal care stores	44619	3.5	3.5	0.0
Food (health) supplement stores	446191	2.5	2.4	-0.1
All other health and personal care stores	446199	4.4	4.5	0.1
Gasoline stations	4471	-0.5	-0.8	-0.3
Gasoline stations with convenience stores	447110	-0.2	-0.5	-0.3
Other gasoline stations	447190	-1.7	-2.0	-0.3
Clothing and clothing accessories stores	448	0.0	-0.1	-0.1
Clothing stores	4481	0.3	0.1	-0.2
Men's clothing stores	448110	-2.1	-2.3	-0.1
Women's clothing stores	448120	-2.5	-2.9	-0.3
Children's and infants' clothing stores	448130	2.9	2.4	-0.5
Family clothing stores	448140	3.4	3.3	-0.1
Clothing accessories stores	448150	0.5	0.3	-0.2
Other clothing stores	448190	0.1	0.0	-0.1
Shoe stores	448210	-1.4	-1.6	-0.2
Jewelry, luggage, and leather goods stores	4483	0.2	0.4	0.2
Sporting goods, hobby, book, and music stores	451	1.6	1.4	-0.2
Sporting goods, hobby, and musical instrument stores	4511	1.3	1.1	-0.2
Sporting goods stores	451110	1.0	0.8	-0.2
Hobby, toy, and game stores	451120	2.7	2.7	0.0
Sewing, needlework, and piece goods stores	451130	-0.6	-0.8	-0.2
Musical instrument and supplies stores	451140	1.9	2.0	0.1
Book, periodical, and music stores	4512	2.4	2.1	-0.3
Book stores and news dealers	45121	3.2	3.2	0.0
Prerecorded tape, compact disc, and record stores	451220	0.8	0.3	-0.6
General merchandise stores	452	1.6	1.6	0.0
Department stores	45211	2.2	2.1	0.0
Department stores (except discount department stores)	452111	1.8	1.7	-0.1
Discount department stores	452112	2.4	2.4	0.0
Other general merchandise stores	4529	1.0	1.0	0.0
Warehouse clubs and supercenters	452910	2.4	2.4	0.0
All other general merchandise stores	452990	-1.7	-1.8	-0.2
Miscellaneous store retailers	453	1.6	1.4	-0.1
Florists	453110	-1.2	-1.3	-0.1
Office supplies, stationery, and gift stores	4532	1.1	0.9	-0.2
Office supplies and stationery stores	453210	1.4	1.4	0.0
Gift, novelty, and souvenir stores	453220	0.9	0.6	-0.3
Used merchandise stores	453310	4.0	3.9	-0.1
Other miscellaneous store retailers	4539	2.8	2.7	0.0
Pet and pet supplies stores	453910	3.6	3.6	0.0
Art dealers	453920	2.7	2.5	-0.2
Manufactured (mobile) home dealers	453930	1.2	1.2	0.1
All other miscellaneous store retailers	45399	2.8	2.8	0.0

**Table 5. Comparison of average annual percentage growth rates of all employee hours, 1987-2002**

<b>Description</b>	<b>NAICS</b>	<b>Old</b>	<b>New</b>	<b>New - Old</b>
Nonstore retailers	454	0.6	0.6	0.0
Electronic shopping and mail order houses	45411	4.7	4.7	0.1
Vending machine operators	454210	-1.0	-1.0	0.0
Direct selling establishments	4543	-1.5	-1.5	0.0
Fuel dealers	45431	-2.0	-2.0	0.0
Heating oil dealers	454311	-1.9	-1.9	0.0
Other direct selling establishments	454390	-1.1	-1.1	0.0
General freight trucking, long-distance	48412	1.9	1.8	0.0
Publishing	511	1.4	1.7	0.3
Newspaper, periodical, book, and directory publishers	5111	-0.3	0.0	0.3
Newspaper publishers	511110	-0.9	-0.8	0.1
Periodical publishers	511120	0.8	1.0	0.2
Book publishers	511130	0.3	0.5	0.2
Database and directory publishers	511140	1.0	1.2	0.2
Other publishers	51119	0.2	0.2	0.0
Software publishers	511210	9.5	9.8	0.3
Motion picture and video exhibition	51213	2.3	2.5	0.2
Broadcasting, except Internet	515	1.6	1.6	0.0
Radio and television broadcasting	5151	0.3	0.2	-0.1
Radio broadcasting	51511	-1.0	-1.2	-0.3
Television broadcasting	515120	1.2	1.2	0.0
Cable and other subscription programming	515210	6.1	6.7	0.6
Wired telecommunications carriers	517110	-0.4	-0.4	0.0
Wireless telecommunications carriers (except satellite)	51721	16.9	17.3	0.4
Cable and other program distribution	517510	6.0	6.3	0.3
Commercial banking	522110	-0.3	-0.4	0.0
Passenger car rental	532111	2.4	2.2	-0.2
Truck, utility trailer, and rv (recreational vehicle) rental and leasing	532120	0.2	0.0	-0.2
Video tape and disc rental	532230	2.9	2.7	-0.2
Tax preparation services	541213	4.1	4.0	-0.1
Advertising agencies	541810	0.0	-0.2	-0.2
Photography studios, portrait	541921	3.0	2.9	-0.1
Travel agencies	561510	0.1	0.1	0.0
Janitorial services	561720	1.8	1.7	-0.1
Traveler accommodation	7211	1.2	1.0	-0.2
Hotels (except casino hotels) and motels	721110	0.9	0.7	-0.2
Casino hotels	721120	2.3	2.1	-0.2
Other traveler accommodation	72119	1.6	1.3	-0.2
Bed-and-breakfast inns	721191	0.8	0.6	-0.2
All other traveler accommodation	721199	2.9	2.5	-0.4
Food services and drinking places	722	1.8	1.7	-0.1
Full-service restaurants	722110	1.8	1.8	-0.1
Limited-service eating places	72221	1.7	1.6	-0.1
Special food services	7223	1.9	1.7	-0.2
Drinking places (alcoholic beverages)	722410	1.1	1.0	-0.1
Automotive repair and maintenance	8111	1.7	1.5	-0.2
Hair, nail, and skin care services	81211	1.3	1.3	0.0
Funeral homes and funeral services	812210	1.1	1.0	-0.1
Drycleaning and laundry services	8123	-0.1	-0.2	-0.1
Coin-operated laundries and drycleaners	812310	-1.7	-1.8	-0.2
Drycleaning and laundry services (except coin-operated)	812320	-0.7	-0.8	-0.1
Linen and uniform supply	81233	1.6	1.5	-0.1
Photofinishing	81292	-2.4	-2.7	-0.2

**Chart 1. Distribution of Differences Between New and Old Trends in Supervisory Hours, 1987-2002**



**Chart 2. Distribution of Differences Between New and Old Trends in Total Labor Hours, 1987-2002**

