

Executive Summary of Alternatives and Description of Resource Management Plan

INTRODUCTION

The Bureau of Reclamation (Reclamation) prepared this combined Resource Management Plan/Environmental Assessment (RMP/EA) to establish a 10-year management framework for conserving, protecting, enhancing, developing, and using the physical and biological resources at Canyon Ferry Reservoir and its surrounding lands (study area) located in south-central Montana. The RMP/EA does not address water operations or power generation.

Preparation and implementation of an RMP is a *Federal action*, and the National Environmental Policy Act (NEPA) requires Federal agencies to consider the potential effect(s) of a Federal action on the environment before it can be implemented. In compliance with NEPA, the EA portions of this document describe three proposed alternatives, including a No Action Alternative; existing resources in the study area; and the potential effects of three alternative resource management plans (alternatives) on these resources. The RMP portions of this document set forth the alternative formulation process and provide a detailed description of the proposed RMP management actions. The NEPA alternative formulation process facilitates the planning process by providing a mechanism by which Reclamation, with interested agencies and the public, can formulate alternatives in response to identified public and agency issues and concerns. The basic goal in formulating alternatives is to identify various combinations of land uses and resource management practices that respond to the issues identified during the planning process.

ALTERNATIVE FORMULATION

Reclamation developed two reasonable action alternatives (i.e., alternatives that prescribe a change in resource management). In addition to the action alternatives, NEPA requires consideration of a No Action Alternative (i.e., an alternative describing the management of Canyon Ferry Reservoir without implementing an RMP).

To develop alternatives, a Reclamation interdisciplinary team, through a public involvement process, determined the elements and/or actions that would best address the identified issues. The team then combined the various elements into the two action alternatives. Each alternative would achieve a different desired future condition at Canyon Ferry Reservoir if implemented. The team formulated the following alternatives:

- R No Action Alternative (Alternative A)
- R Natural Resource Enhancement with Moderate Recreation Development (Alternative B) (Preferred)
- R Natural Resource Enhancement with Maximum Recreation Development (Alternative C)

Under **Alternative A**, a minimum number of facilities could be provided to meet basic public health and safety needs and demands. Resource management practices would not change. Management actions would occur on a case-by-case basis to meet Federal, State, and local laws and regulations.

Under **Alternative B**, a moderate number of facilities would be provided, including day-use facilities, some additional overnight camping sites, new boat ramps, and trails. In addition, substantial efforts would be made toward improving existing facilities and recreational opportunities.

Under **Alternative C**, a maximum number of fully developed day-use sites, overnight campground sites, trails, and opportunities would be provided.

Some elements and/or management actions are common to all alternatives, and some elements are unique to a specific alternative. The following elements and/or actions are common to all alternatives:

- R Adhering to existing and future Federal, State, and county laws and regulations (in particular, Public Law [P.L.] 105-277).
- R Operating the Canyon Ferry Unit of the Pick-Sloan Missouri Basin Program for its authorized purposes.
- R Continuing operation and maintenance of Reclamation lands and facilities contingent on the appropriation of funds from the Congress and staffing limitations.
- R Continuing existing permitted uses with evaluation of continued use when permits expire.
- R Allowing no unauthorized private exclusive use of Reclamation lands and waters.
- R Seeking non-Federal or other Federal recreation managing partners pursuant to P.L. 89-72.

- R Managing Canyon Ferry Reservoir land and water areas by Reclamation if a managing partner cannot be found.
- R Pursuing an agreement with Broadwater County for recreation facility development and management of the Silos Recreation Area pursuant to Title X.
- R Working with the Montana Fish, Wildlife and Parks (MFWP) and other entities to identify projects that qualify for cabin sale trust funds pursuant to Title X.
- R Continuing to cooperate with MFWP in the management of the Wildlife Management Area (WMA), pursuant to the existing agreement between both entities.
- R Reissuing concession contracts pursuant to Reclamation policy.
- R Conducting Facilities Condition Assessments of facilities.
- R Establishing a concession operation at Silos Recreation Area.
- R Continuing to conduct accessibility evaluations of all facilities and programs.
- R Continuing to work with a shoreline management committee in developing recommendations for erosion-control methods and locations.
- R Continuing to cooperate with the Montana bald eagle working group and continuing the bald eagle viewing program.
- R Continuing to cooperate with the Hauser Lake Bald Eagle Committee.
- R Implementing the goals of the Buck Snort Fire Rehabilitation Plan prepared by Reclamation and the Bureau of Land Management.
- R Continuing to follow the Federal Wildland Fire Management Policy and the Secretary of the Interior's fire policy letter of January 18, 2001, and prepare a Fire Management Plan for Canyon Ferry Reservoir.
- R Working with MFWP to cooperatively manage Canyon Ferry Reservoir lands for fish and wildlife species.
- R Continuing the 1993 comprehensive weed management plan and updating as necessary.
- R Continuing to cooperate with local law enforcement agencies pursuant to signed agreements.

- R Ensuring fueling facilities meet fire codes.
- R Continuing to operate the Canyon Ferry Visitor Center.
- R Requiring powerlines to be buried to protect raptors.
- R Repairing and replacing old and deteriorated signs.
- R Continuing to work with Broadwater County on developing a nonmotorized trail from Indian Road Recreation Area to Silos Recreation Area.
- R Continuing the warning system established by the Coast Guard Auxiliary (CGAUX).
- R Cooperating with the Canyon Ferry Recreation Association (CFRA) in establishing a policy for the use of shoreline areas between the reservoir and private lease lots.
- R Cooperating with the CFRA and other interested parties in establishing a dock policy.
- R Continuing the long-term water quality program for the reservoir and river immediately below the dam.
- R Continuing to work with MFWP on their perch habitat program for the south end of the reservoir.
- R Closing some areas near the dam for security purposes.
- R Keeping existing day-use areas and not converting them to overnight campgrounds.
- R Working with Broadwater County to establish an appropriate concession operation at Silos.
- R Continuing the weed control agreement with Broadwater County and supply annual funding to the county.
- R Working with Lewis and Clark County on formalizing a long-term weed control agreement and supply annual funding to the county.

SUMMARY OF NATURAL RESOURCE ENHANCEMENT WITH MODERATE RECREATION DEVELOPMENT ALTERNATIVE (PREFERRED RMP ALTERNATIVE)

Note: Only the preferred RMP alternative is described here. A detailed description of the remaining alternatives is in chapter IV.

General Actions

The following are general actions identified during the planning process to facilitate management of Canyon Ferry Reservoir and achieve the goals and objectives established for the study area. These actions apply to all lands within the study area. More specific actions are detailed later in this chapter.

- R Reclamation will continue to operate Canyon Ferry Reservoir and Reclamation lands adjacent to it for the purposes for which the project was authorized.
- R Reclamation will adhere to existing and future Federal, State, and county laws, regulations, and ordinances, including accessibility regulations and guidelines.
- R Decisions will be made for the benefit of the project and the general public.
- R Reclamation will provide additional on-site staff to manage the land, recreation, and concession activities at Canyon Ferry Reservoir.
- R Visitor health and safety will be the primary focus when constructing or upgrading needed facilities and providing visitor use opportunities.
- R Reclamation will ensure that public use and facility development is consistent with the goals and objectives of the RMP.
- R In cooperation with concerned parties, Reclamation will establish a working group to work with Reclamation to identify potential options to resolve general Canyon Ferry Reservoir issues and implement RMP objectives.
- R Reclamation will conduct periodic land management and recreation reviews to ensure that the lands are being managed pursuant to the existing agreements and land use authorizations.
- R Reclamation will monitor visitor use to identify user conflicts and investigate corrective measures to prevent further conflicts.
- R Reclamation will comply with its policies, directives, and standards.

Specific Actions

Access Management – Actions.—

- R Reclamation will establish criteria for closing roads and trails causing environmental resource and habitat damage. In addition, roads that provide access to the reservoir

and that cross private property illegally will be closed to reservoir access. Reclamation will coordinate the development of its road closure criteria with other Federal and State agencies.

- R** Reclamation will close all off-road vehicle (ORV) use areas pursuant to existing Federal law and Reclamation policy. Exceptions will be made pursuant to 43 CFR Part 420 (Off-Road Vehicle Use).
- R** Reclamation will evaluate its operation and maintenance program for roads to achieve appropriate standards of public safety and resource protection. Established standards will also be followed if new roads are constructed to provide safe and legal access to the reservoir area.
- R** Reclamation will identify existing roads that should provide year-round access (i.e., winter access). New roads to provide year-round access will not be constructed.
- R** Reclamation will identify roads and trails that will remain open for public use. These roads/trails have provided historic public access to the reservoir for individuals who desire a less-confined recreation experience. However, these roads/trails must have legal access across private lands before such roads are allowed to remain open for public use. Roads that are left open will be monitored by Reclamation to determine the degree of use and potential resource damage that could occur.
- R** Reclamation will seek cooperative partnerships for developing and maintaining public access roads to the reservoir. Reclamation will cooperate with the Federal, State, and county highway departments to evaluate the feasibility of securing funds under the Transportation and Efficiency Act for the 21st Century or other funding sources for paving Jim Towne Road and the 3-mile section between Magpie and the county line, as well as funds for improving access roads to the reservoir and within the study area covered by the RMP/EA. Reclamation will also work with other entities, including the Canyon Ferry working group and the Canyon Ferry Fire Service Areas Board of Trustees, to resolve public safety access issues on East and West Shore Drives.
- R** Reclamation will work with the Montana Department of Transportation and Lewis and Clark County on improving safety conditions on Highway 284 at the north end of the reservoir near the dam. Emphasis will be given to signing and establishing turning lanes into recreation areas.
- R** Reclamation will establish procedures which will address potential requests from private subdivisions for access to the reservoir. Generally, Reclamation will not grant additional access to special interest groups or private parties over and above access that is already provided to the public.

- R Reclamation will, in cooperation with the adjacent landowner(s), research the ownership of the road that leads to the Hole in the Wall fishing area to determine if the public has legal access to this area.
- R Reclamation will provide proper directional and/or warning signs for main access roads and interior roads to guide visitors.
- R Reclamation will work cooperatively with other road users and entities to consider new cooperative initiatives for road development and maintenance. The cooperative initiatives may provide cost-share opportunities commensurate with past funding amounts to upgrade East and West Shore Drives beyond the existing condition.

Recreation Management – Actions.—

- R Before rehabilitating existing facilities, Reclamation will conduct a Facilities Condition Assessment to determine needed improvements and to assist in the preparation of site-specific recreation master plans. Once the assessment and site planning have been completed, those recreation areas that have immediate needs will be given a higher priority. Those immediate needs are addressed in the actions for specific recreation areas listed below. The amount of rehabilitation work needed at other recreation areas not indicated below will depend on the results of the Facilities Condition Assessment and individual site master plans. See figure S-1 for the process used to develop recreation facilities.
- R All recreation facility developments within the Canyon Ferry Reservoir area will be based on public need, enhancing the visitor experience, and the social, physical, environmental, and facility carrying capacity limits as described in chapter III. Reclamation will monitor visitor use to ensure that the above-mentioned capacity limits at Canyon Ferry are not exceeded. Capacity limits will be determined during site planning and before major capital investments are made.
- R Special attention will be given to upgrading existing restrooms, individual campsites, and day-use sites to bring the facilities up to current design standards (e.g., proper spacing, turning radii, accessibility, vegetative screening, potable water, and appropriate landscaping and irrigation).
- R Reclamation will conduct handicapped-accessibility evaluations of existing facilities and programs, prepare necessary action plans, and schedule modifications to achieve compliance with existing accessibility laws and regulations.

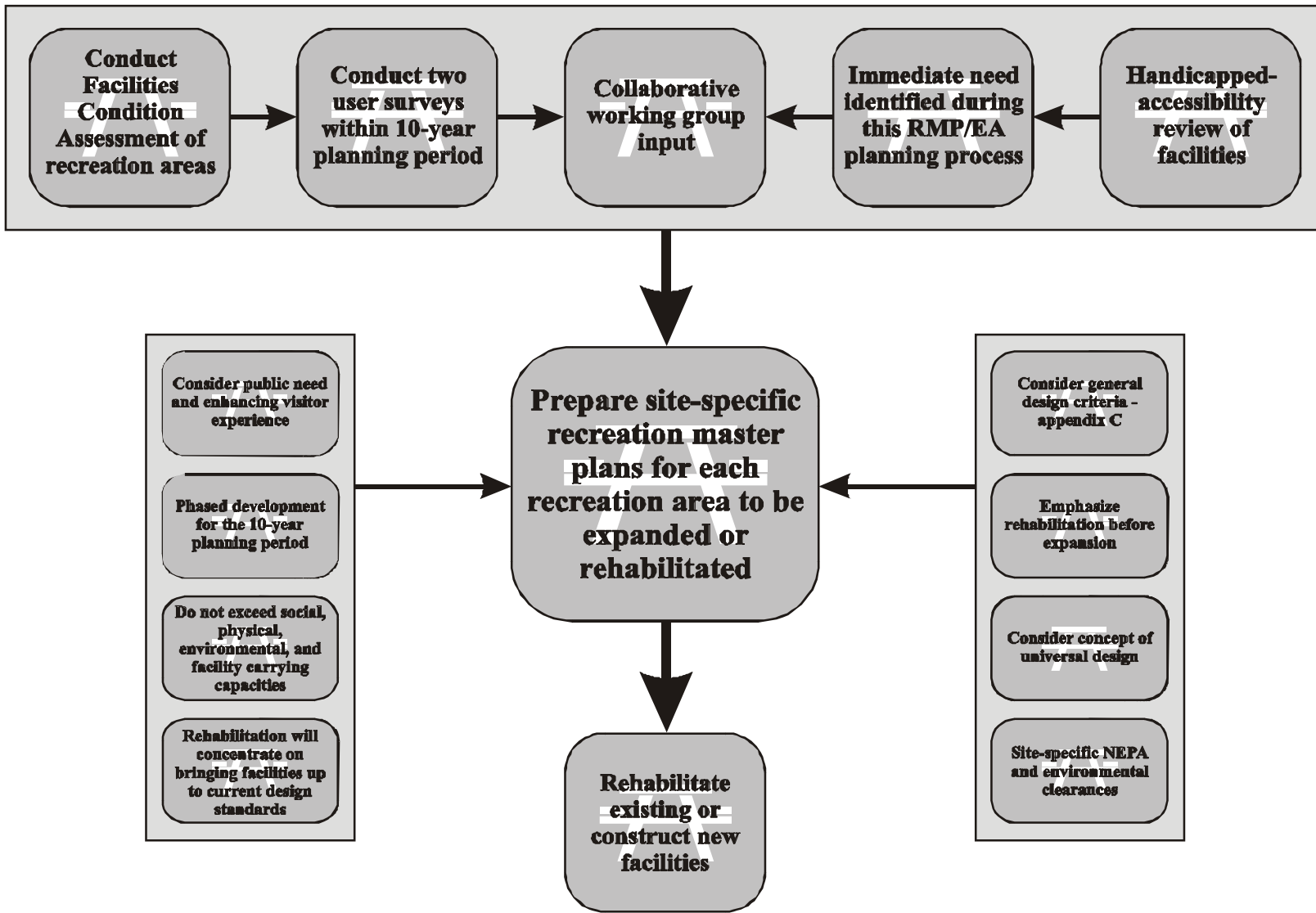


Figure S-1.—Process for rehabilitating existing and developing new recreation facilities.
 (Note: Site-specific NEPA and environmental clearances will be obtained prior to construction.)

- R The concept of universal design¹ will be the standard when designing and constructing visitor use facilities.
- R All trail development will follow the general design criteria described in appendix D and a comprehensive trail plan to be developed.
- R Recreation will continue to be managed by Reclamation if a managing partner cannot be found.
- R Emphasis will be given to rehabilitating existing recreation areas before initiating expansion efforts at new (proposed) sites.
- R New developments will be phased in over the 10-year planning period.
- R Reclamation will investigate riparian protection measures within, or immediately adjacent to, all developed recreation areas.
- R All recreation facility development will follow the general design criteria as described in appendix C.
- R Fee stations will be installed at appropriate locations leading to specific recreation areas. Fees charged for the use of facilities will be comparable to fees charged for the use of the same types of facilities and services at recreation areas other than the Canyon Ferry Reservoir area. A variety of fee structures will be examined to accommodate a wide variety of recreation uses.
- R The Golden Age Passport program will be promoted to allow senior citizens to enter and use the facilities at Canyon Ferry Reservoir, as well as other federally managed areas once the passport is purchased.
- R Reclamation will investigate the feasibility of establishing one user pass that is good for multiple areas managed by a variety of entities.
- R None of the existing day-use areas will be converted into overnight campgrounds.
- R Abandoned/unlicensed vehicles and equipment (i.e., campers, boats, tents, trailers, etc.) left in campgrounds for extended periods of time should be removed. A policy addressing this issue should be established and enforced.

¹ For the purposes of this RMP/EA, universal design is defined as facilities and features that will be accessible to persons with disabilities, beyond what is legally required. Once existing laws and regulations have been met, an attempt will be made to follow the principles of total accessibility in constructing the remaining facilities and features.

The volunteer camp host program will continue, but will be evaluated to identify possible improvements. Additional volunteers will be solicited to assist Reclamation in maintaining trails, litter control, and Visitor Center operation.

Recreation facility development for specific recreation areas may consist of the following actions:

R Silos Recreation Area

- S** Reclamation, in cooperation with Broadwater County, will upgrade and provide new recreation facilities at the Silos Recreation Area. The plan of development will follow a plan being developed by Broadwater County and Reclamation.
- S** Development will include the construction of a deep water bay and boat ramp.
- S** Reclamation and Broadwater County are investigating the scope of a concession operation to enhance recreation opportunities.

R White Earth Recreation Area

- S** Prepare a Facility Condition Assessment, evaluate the uses, and prepare a site-specific recreation master plan for the area.
- S** Depending on the outcome of the Facility Condition Assessment, master plan, and an immediate need identified in this planning process, consideration will be given to:
 - ¼ Constructing a new campground loop and support facilities (e.g., parking, picnic tables, grills, trash receptacles, and potable water). The existing restroom on the north side of the peninsula will be included in any development of this camping loop.
 - ¼ Developing a short trail along the shoreline on the south side of the peninsula with trail head, signing, and parking.
 - ¼ Developing a trail from White Earth to Crittendon day-use area to the north.

R Hellgate Recreation Area

- S** Prepare a Facility Condition Assessment, evaluate the uses, and prepare a site-specific recreation master plan for the area.

- S Depending on the outcome of the Facility Condition Assessment, master plan, and an immediate need identified in the planning process, consideration will be given to:
 - ¼ Upgrading the existing campsites to meet current design standards (e.g., proper spacing, turning radii, accessibility, vegetative screening, and appropriate landscaping and irrigation).
 - ¼ Upgrading the boat ramp and parking area.

R Indian Road Recreation Area

- S Prepare a Facility Condition Assessment, evaluate the uses, and prepare a site-specific recreation master plan for the area.
- S Depending on the outcome of the Facility Condition Assessment, master plan, and an immediate need identified in the planning process, consideration will be given to:
 - ¼ Realigning the access road into the campground area. A fee station will be considered, where appropriate, and fees will be collected for the use of the campground and day-use area. (*Note:* The boat launch ramp is owned and operated by MFWP; therefore, Reclamation cannot collect fees for the use of the boat ramp).
 - ¼ Working with Broadwater County and Townsend on establishing a nonmotorized trail from Indian Road Recreation Area to Silos Recreation Area.
 - ¼ Providing signs with interpretive information to inform the public about Canyon Ferry Reservoir and the surrounding area.
 - ¼ Developing a restroom with flush toilets for the campground.
 - ¼ Working with Broadwater County on finding ways to dispose of gravel pile on site.
 - ¼ Coordinating development with the Broadwater Stream and Lake Committee.
 - ¼ Investigating the development of a Memorandum of Understanding with the U.S. Forest Service for constructing and operating an ice-skating rink at the ponds.

R Riverside Recreation Area

- S** Prepare a Facility Condition Assessment, evaluate the uses, and prepare a site-specific recreation master plan for the area.
- S** Depending on the outcome of the Facility Condition Assessment, master plan, and an immediate need identified in the planning process, consideration will be given to:
 - ¼ Upgrading the existing campground to current design standards (e.g., proper spacing, turning radii, accessibility, vegetative screening, and appropriate landscaping and irrigation).
 - ¼ Providing electric power to the campground area. (*Note:* Power has already been supplied to the camp host, and a pressurized water system is provided).
 - ¼ Upgrading the existing day-use area.
 - ¼ Constructing a vehicle turnaround and parking area near the south end of the Riverside Recreation Area complex.
 - ¼ Placing riprap at appropriate locations along the riverbank to prevent erosion and protect facilities.
 - ¼ Evaluating the need for providing additional eagle viewing opportunities.

R Confederate Bay Recreation Area

- S** Prepare a Facility Condition Assessment, evaluate the uses, and prepare a site-specific recreation master plan for the area.
- S** Depending on the outcome of the Facility Condition Assessment, master plan, and an immediate need identified in the planning process, consideration will be given to:
 - ¼ Closing and revegetating roads that do not lead to developed areas and sites. Physical barriers may be provided, where necessary, to prevent vehicles from leaving developed roads.
 - ¼ Installing direction and entrance signs along State Highway 284.

- ¼ Maintaining at least a 100-foot setback from Confederate Creek when constructing or rehabilitating facilities.

R Jo Bonner Recreation Area

- S** Prepare a Facility Condition Assessment, evaluate the uses, and prepare a site-specific recreation master plan for the area.
- S** Depending on the outcome of the Facility Condition Assessment, master plan, and an immediate need identified in the planning process, a group shelter and parking area may be constructed.

R Cemetery Island

- S** Prepare a Facility Condition Assessment, evaluate the uses, and prepare a site-specific recreation master plan for the area.
- S** Depending on the outcome of the Facility Condition Assessment, master plan, and an immediate need identified in the planning process, consideration will be given to:
 - ¼ Improving the existing trail system on Cemetery Island.
 - ¼ Installing appropriate information signs.
 - ¼ Investigating alternatives available for pumping the two existing toilets.

R Court Sheriff

- S** Prepare a Facility Condition Assessment, evaluate the uses, and prepare a site-specific recreation master plan for the area.
- S** Depending on the outcome of the Facility Condition Assessment, master plan, and an immediate need identified in the planning process, consideration will be given to separating site developments so that day users and boat ramp users are not negatively impacting each other.

R Chinamen's

- S** Prepare a Facility Condition Assessment, evaluate the uses, and prepare a site-specific recreation master plan for the area.
- S** Depending on the outcome of the Facility Condition Assessment, master plan, and an immediate need identified in the planning process, consideration will

be given to widening, lengthening, and leveling of parking spots and the redesign of the boat ramp area so that traffic does not become congested and block the road.

R Other Locations

- S** The boat ramp at Shannon will be extended to provide access at low water levels.
- S** Pursue replacing boat ramps at Kims' and Yacht Basin and extend ramp at Shannon. Goose Bay boat ramp will be replaced in 2003.
- S** Based on the Facilities Condition Assessment and a site-specific recreation master plan, upgrade other boat ramps (including lengthening) to allow for safe access when reservoir is low and when there are high winds.
- S** Provide adequate boat docks at boat ramps to prevent user conflicts and to address safety concerns, such as high winds.
- S** Evaluate the need to install a boat ramp and restroom at Duck Creek.

Commercial service actions for Canyon Ferry Reservoir will consist of the following:

- R** Yacht Basin and Kim's Marina operators will be offered extensions to their concession contracts to allow appropriate time to conduct commercial services planning and public involvement activities prior to the issuance of Requests for Proposals (RFPs).
- R** Reclamation will prepare and use a Commercial Services Plan (CSP) to assist in preparing a RFP for concession operations. A CSP for the reservoir will provide an analysis of the need for and services required of any new or existing concessions. Any commercial development will be subject to the Reclamation policies and directives and standards in place at the time.
- R** Public involvement will be an integral part of the CSP process.
- R** An appropriate level of environmental analysis will be completed for the CSP.
- R** A concession operation will be developed at Silos Recreation Area subject to plans developed by Reclamation and Broadwater County. The scope of this operation is being investigated by Reclamation and Broadwater County. Reclamation and the county have signed an agreement for Broadwater County to manage the Silos Recreation Area.

- R Kim's, Yacht Basin, and Goose Bay Marinas will continue to operate until 2003, 2004, and 2010, respectively, unless an extension is agreed to so planning and public involvement can be accomplished for the CSP. Before expiration of each contract, Reclamation will initiate an RFP process for obtaining a concessionaire(s). The issuance of concession permits will follow Reclamation's *Concessions Policy, Directives and Standards* and associated guidelines. The policy includes, among other things, the requirement to provide for public competition for the right to operate a concession on Reclamation lands.
- R Reclamation will identify existing guides and outfitters doing business at Canyon Ferry Reservoir, and they will be required to obtain special use permits pursuant to existing Federal law.
- R Reclamation will conduct periodic evaluations of existing concession operations to determine if the terms and conditions of the concession permits are being adhered to; the evaluations will be conducted according to established directives and standards.
- R Any proposals to provide new commercial services must first be presented to and evaluated by Reclamation. If approved by Reclamation, the opportunity to provide the new commercial service should be competitively offered to prospective operators.

Proposed actions for historically used undeveloped remote areas are as follows:

- R Access to historically used undeveloped areas around the reservoir will remain open if the access roads are not causing damage to the environmental resources within the study area. As stated earlier, roads that do not have legal access to the reservoir and roads causing resource damage will be closed.
- R The public use of the historically used remote sites will be monitored to determine the need for sanitation facilities and future closure if such use is negatively affecting the environmental resources.

Reclamation will initiate two public user surveys at Canyon Ferry Reservoir during the RMP 10-year planning period. The results of the visitor use surveys will be used to update information collected from the two previous surveys and fill in data gaps identified during the RMP/EA process. Data to be collected includes:

- R Visitation and recreation activity participation levels for sailing, hunting, and jet skiing, in addition to the activities already identified during the previous studies and documented in the RMP/EA.

- R Carrying capacity limits (i.e., identify user conflicts and facility overuse, if any). Surveys will assist Reclamation in monitoring visitor use to ensure that carrying capacity limits have not been exceeded.
- R Existing studies and planning documents within the region (i.e., identify possible correlations or discrepancies between data it collects and the data contained in other existing studies and regional or local planning reports).
- R Possible impacts that private, exclusive use of areas within existing concessions may have on the quality of the public's recreation experience or their use of the reservoir area.
- R Overall public satisfaction level with accomplishment of actions identified in the RMP.
- R Information which will determine whether to build future planned developments.
- R Winter use.

Heritage Resources – Actions.—

- R Reclamation will continue to comply with section 106 of the National Historic Preservation Act for all activities conducted at Canyon Ferry Reservoir.
- R Reclamation will comply with section 110 of the National Historic Preservation Act for all heritage resources at Canyon Ferry Reservoir as personnel, time, and funding are available.
- R In consultation with the Montana State Historic Preservation Office, Reclamation will assess the adequacy of existing heritage resource inventories and conduct necessary surveys in the areas that have not been adequately covered.
- R Proposed improvements will be designed to avoid impacts to archeological and historic sites, as well as environmentally sensitive habitats and critical wildlife areas.

Health and Safety – Actions.—

- R Reclamation will work with MFWP to improve enforcement of watercraft safety rules and regulations and to enhance their existing programs.

- R Rules and regulations governing the use of Reclamation lands, as stated in the public information issue category, will be placed at visitor contact areas.
- R The camp host program will be reviewed and monitored to determine if additional guidance should be provided to respective camp hosts so that relations with the public can be improved within the developed recreation areas.
- R Trash receptacles will be maintained and placed at campgrounds.
- R Restrooms will be maintained at campgrounds and day-use areas.
- R Based on the results of the sign inventory, appropriate warning signs will be placed throughout the reservoir area to warn visitors of potential hazards, including signing needs for visitors using the reservoir during the winter (i.e., driving and fishing on the ice).
- R Reclamation will ensure existing emergency services (i.e., fire control, search and rescue, and ambulance service) are adequate and that proper notification and response procedures are in place.
- R Upon expiration of existing concession contracts, as detailed in the recreation issue category, Reclamation will evaluate the need to have future concessionaires install fish cleaning and recreational vehicle dump stations within their area of operation. Reclamation will evaluate the need for these facilities at other locations within the study area.
- R Reclamation will promote the Crime Witness Program in an effort to promote public safety.
- R Reclamation will ensure that fueling facilities and trash receptacles are constructed to fire codes.
- R Work with the CGAUX in promoting their early warning system and in developing a comprehensive plan to improve boater safety.
- R Through the lease lot sale process, Reclamation, the CFRA, and interested parties are addressing the septic system and drain field issues. Reclamation will ensure the appropriate local and State rules and regulations are followed.
- R No wake zones will be established and buoys will be installed by Reclamation, in cooperation with MFWP, at swim beaches, boat ramps, developed day-use areas, campgrounds, sheltered fishing bays, environmentally sensitive areas, and other areas, as necessary, to prevent user conflicts and resource damage.

- R** Reclamation will cooperate with the Montana Department of Environmental Quality in protecting the source water protection zones for the public water systems throughout the reservoir area.

- R** Some areas above and below the dam will be closed for public safety and facility security purposes. As of October 2002, the following closures have been instituted:
 - S** No public access in the tail water area just below Canyon Ferry Dam. This area is closed the entire year, prohibiting public access with signage and a visible cable demarcating the closed area. This closure is listed in the Montana fishing regulations.

 - S** The Canyon Ferry Powerplant areas is a restricted area and has chain link fencing and signs prohibiting public access to this area.

 - S** The public is prohibited from entering the Helena Valley Pumping Plant area. This area has chain link fencing and signs prohibiting public access.

 - S** Boat access is not permitted closer than the floating buoy system upstream of the dam.

 - S** No parking or stopping is permitted on the crest of Canyon Ferry Dam. Reclamation has posted signs and installed jersey barriers restricting public access and parking in this area.

- R** Install fire hydrants at several locations in cooperation with the Broadwater County Rural Fire District.

- R** Reclamation has granted space for turnarounds, dry fire hydrants, and future fire stations within the study area and will continue to work with the Canyon Ferry Fire Service Area Board of Trustees to identify and resolve issues related to fire suppression.

Wildlife Resources – Actions.—

- R** Reclamation will continue to work with Pheasants Forever and other organizations to develop additional habitat along the eastern shore of the reservoir.

- R** A long-term watchable wildlife program will be considered for the reservoir area.

- R** Reclamation will cooperate with MFWP and other wildlife agencies to identify and fund projects on reservoir lands that qualify for Montana Fish and Wildlife Conservation Trust Funds.
- R** Reclamation will cooperate with MFWP to identify opportunities for wildlife enhancement projects on all Reclamation lands within the reservoir area.
- R** Reclamation will consider developing a new bird species list for the reservoir, including the WMA, which is managed by MFWP.
- R** Reclamation will continue to cooperate with the Montana bald eagle working group and consider providing improved eagle viewing opportunities at the Riverside Recreation Area. Eagle Bay Drive and Riverside Campground will continue to be closed during certain times of the year to protect eagle perching sites if the eagle count remains above 50.
- R** Reclamation will coordinate a shorebird survey of the reservoir area with the State piping plover survey and use this information to propose potential shorebird habitat enhancement projects.
- R** Reclamation will work with MFWP to identify potential new wildlife areas. If additional WMAs are identified, the existing agreement with MFWP will be amended to incorporate provisions for MFWP management. A wildlife management plan for each new area will be prepared by MFWP.
- R** Reclamation will require that all new powerlines constructed in the reservoir area be buried to provide for protection of raptors.
- R** Reclamation will cooperate with MFWP to identify opportunities for fisheries enhancement opportunities. Possible cooperative efforts include:
 - S** Requiring setbacks of developed recreation areas
 - S** Closing specific areas for the protection of the reservoir fishery
 - S** Identifying potential fisheries enhancement projects for possible funding by the Montana Fish and Wildlife Conservation Trust Fund
 - S** Placing appropriate signs at visitor contact points (i.e., closure, informational, directional, interpretative, etc.).
 - S** Continuing to work with MFWP on their perch habitat program for the south end of the reservoir.

Public Information – Actions.—

- R Reclamation will complete a sign inventory to determine the number and types of signs needed within the study area.
- R Signs will be replaced or repaired, as appropriate.
- R Signs that provide necessary information regarding boating and the use of boat launch ramps, campgrounds, day-use areas, fish cleaning stations, etc., and rules and regulations governing the use of Reclamation lands and facilities will be provided at public use areas.
- R Interpretive signs will be considered for interesting geologic features and other outstanding environmental resources.
- R An appropriate number of warning signs will be placed throughout the study area to protect the health and safety of the visiting public.
- R Informational signs will be placed at appropriate areas to inform the public of the proper use of the shoreline, including the shoreline below the cabin site areas.
- R Reclamation will supply needed maps, brochures, pamphlets, and expanded Internet service to the public.
- R Reclamation will proactively educate cabin site lessees, concessionaires, and the general public on the proper use of Canyon Ferry Reservoir lands.
- R The Visitor Center will remain open and maintained to provide the public with information and interpretation. Repairs will be made as necessary.

Land Use – Actions.—

- R As part of the RMP/EA planning process discussed in this document, Reclamation will implement a land use planning strategy for protecting and expanding resource values while developing a moderate number of new facilities and opportunities for public use.
- R Reclamation will continue to investigate the feasibility of having another Federal or non-Federal agency manage the land and recreation resources within the study area.

- R Reclamation will consider soil conditions, and other limiting resource factors, when planning for and constructing new facilities and when granting licenses, leases, and permits for the use of Reclamation lands. As an example, prime irrigated land and critical wildlife areas will be avoided when developing facilities.
- R Faulty septic systems will be repaired or replaced as deficiencies are identified.
- R Reclamation will cooperate with the State to prepare total maximum daily loads of pollutants for Canyon Ferry Reservoir and the basin immediately above it.
- R Reclamation will continue its water quality monitoring program for the reservoir. Emphasis will be given to monitoring drinking water supplies at developed recreation areas and other specific sites, as appropriate. Data collected will include nutrient samples, zooplankton, phytoplankton, chlorophyll, and other parameters.
- R Reclamation will work with concerned individuals and entities to provide input on shoreline erosion-control methods for Reclamation to consider.
- R In cooperation with the CFRA and other interested parties, Reclamation will develop a policy for public use of the shoreline between the reservoir and the lease lot areas. This policy will not conflict with Title X, Public Law 105-277.
- R In cooperation with the CFRA and other interested parties, Reclamation will develop procedures that address the existing and future placement of private docks at Canyon Ferry Reservoir authorized by Title X and establish design and construction standards (Title X allows one boat dock for each lease lot owner after privatization). Proper requirements/stipulations to be contained in any such land use authorization or permit will be identified. Reclamation manual directives and standards for use authorization will be followed.
- R ORV use should be eliminated to protect areas sensitive to erosion and where impacts to fish and wildlife resources could occur. Closed areas will be revegetated. Erosion-control structures will be placed in areas of ongoing erosion and areas that have the potential for erosion.
- R A program will be initiated to identify and control erosion adjacent to public roads, Canyon Ferry Unit Project facilities, and developed recreation areas where there is a public health and safety concern. Gabions and breakwalls or other erosion-control techniques will be used to protect shorelines, where needed. Design, review, and approval from Reclamation, the Corps of Engineers, and the county conservation districts is required before construction begins.

- R** Reclamation will pursue fencing the exterior boundary of the reservoir area to prevent cattle trespass. Developed campgrounds and other public use areas to be identified may be fenced to prevent resource damage, if necessary. Since the lands in Broadwater County, which are adjacent to Reclamation lands, are within a horse herd district and are considered a fence-in area for horses, Reclamation will work with adjacent land owners on common fencing needs. The Montana Livestock laws Title 70 Property; 70-16-205 Monuments and Fences will be followed accordingly.
- R** Reclamation will review all integrated pest management practices and make changes if necessary. The 1993 comprehensive weed control program will be followed and updated as necessary. Reclamation will continue the long-term weed control agreement with Broadwater County and supply annual funds to the county. Work with Lewis and Clark County to formalize a long-term weed control agreement and supply annual funding to the county for weed control.
- R** Placement and construction of utilities will be considered on a case-by-case basis, with emphasis on minimizing impacts to the environment.
- R** Reclamation will continue to work with the Montana Aeronautics Division, the Montana National Guard, Broadwater County, and the General Services Administration to transfer ownership of Reclamation lands near Silos Recreation Area to an interested entity for the purpose of operating the airport.
- R** Reclamation will follow the 2001 Federal Wildland Fire Management policy and the January 2001 Secretary of the Interior's policy letter and develop a Fire Management Plan.
- R** Specific fire rehabilitation treatment actions on 500 acres of Reclamation-managed lands impacted by the year 2000 fires:

 - S** Aerial and mechanical seeding of a native seed mixture on approximately 100 acres.
 - S** Treatment of noxious weeds with herbicide at identified sites.
 - S** Repair and reconstruct the damaged camping areas, facilities, and signs.
 - S** Repair West Shore Drive by grading and cleaning out some culverts. Settling basins may be installed above all culverts throughout the burned area to catch sediment. These will require frequent maintenance.

- S** Design and construct new culverts on East and West Shore Drives at selected sites.
- S** Replace some culverts that are undersized as funding allows.

In addition, Reclamation will work with remaining lease holders to permit the removal of slash, underbrush, and dead and downed timber to reduce future fire hazards where determined appropriate by Reclamation.

Reclamation will complete fire rehabilitation efforts by the end of 2003.