

San Luis Pump-Generating Plant Central Valley Project

Ancillary Services

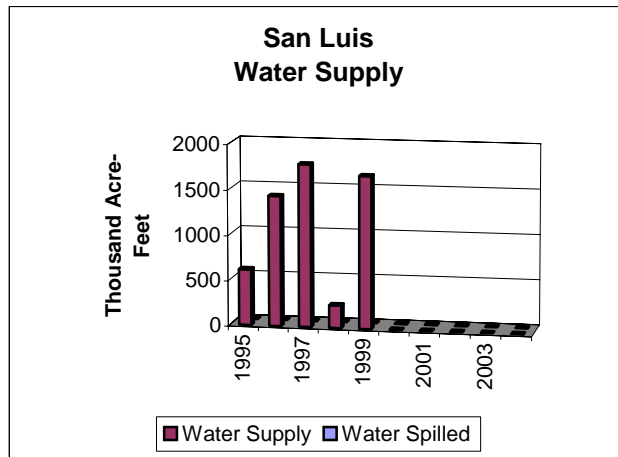
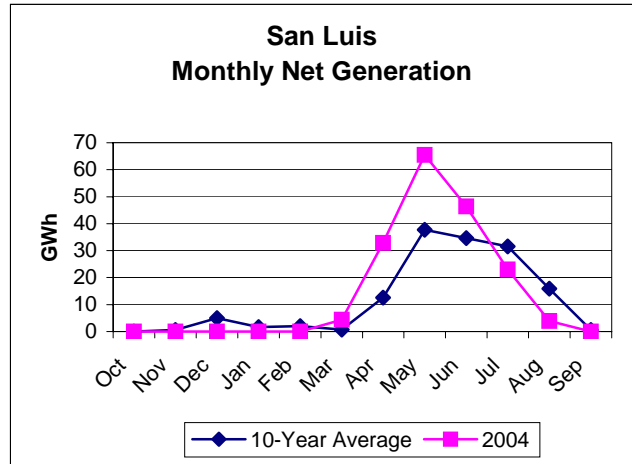
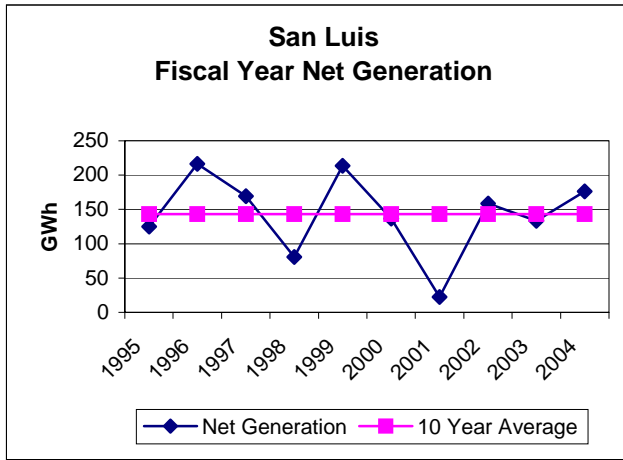
San Luis Ancillary Services	
Spinning Reserve	No
Non-Spinning Reserve	No
Replacement Reserve	No
Regulation/Load Following	No
Black Start	No
Voltage Support	No

Generators

San Luis Generators			
Existing Number and Capacity			
Unit #	Original Capacity (kW)	Capacity Increased (kW)	Present Capacity (kW)
1	53,000	0	53,000
2	53,000	0	53,000
3	53,000	0	53,000
4	53,000	0	53,000
5	53,000	0	53,000
6	53,000	0	53,000
7	53,000	0	53,000
8	53,000	0	53,000
8 Units	*424,000	0	*424,000

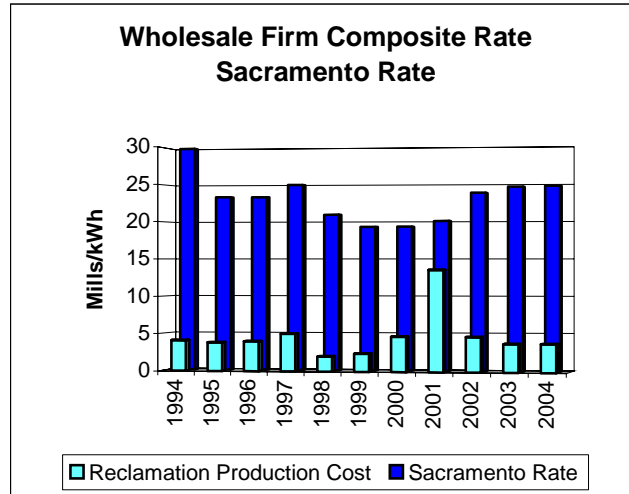
*Reclamation Owns 202,000 kW

Generation



Prime Laboratory Benchmarks

Benchmark 1 Wholesale Firm Rate



Benchmark 2

Reclamation's Production Cost as Percentage of Wholesale Firm Rate

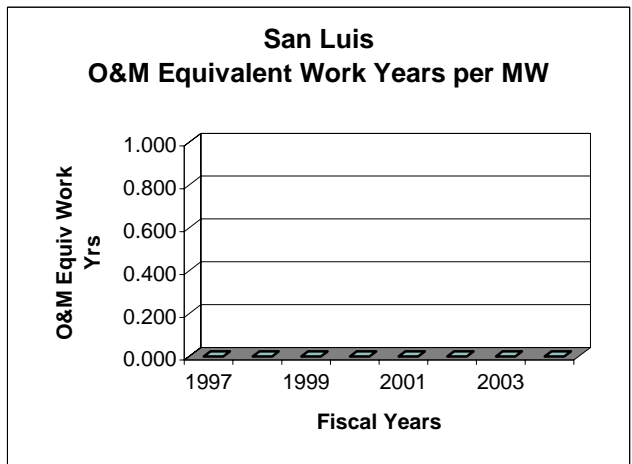
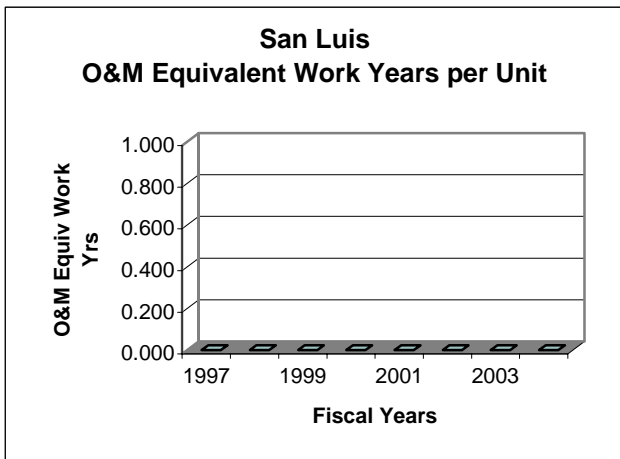
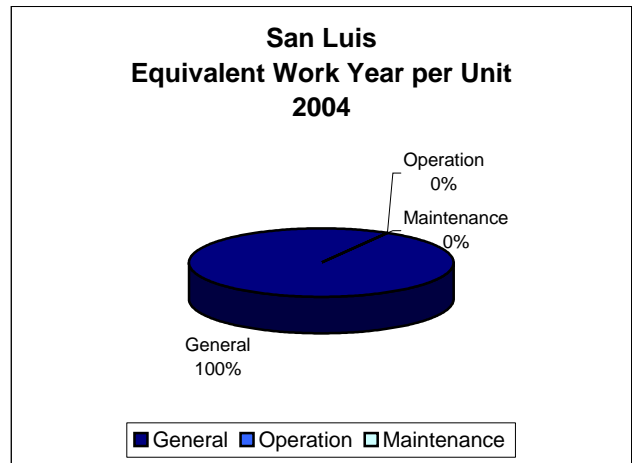
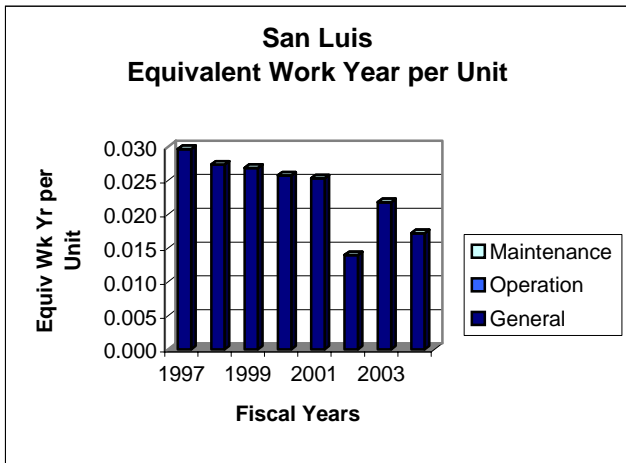
No Cost Data is Available

Benchmark 3 Production Cost

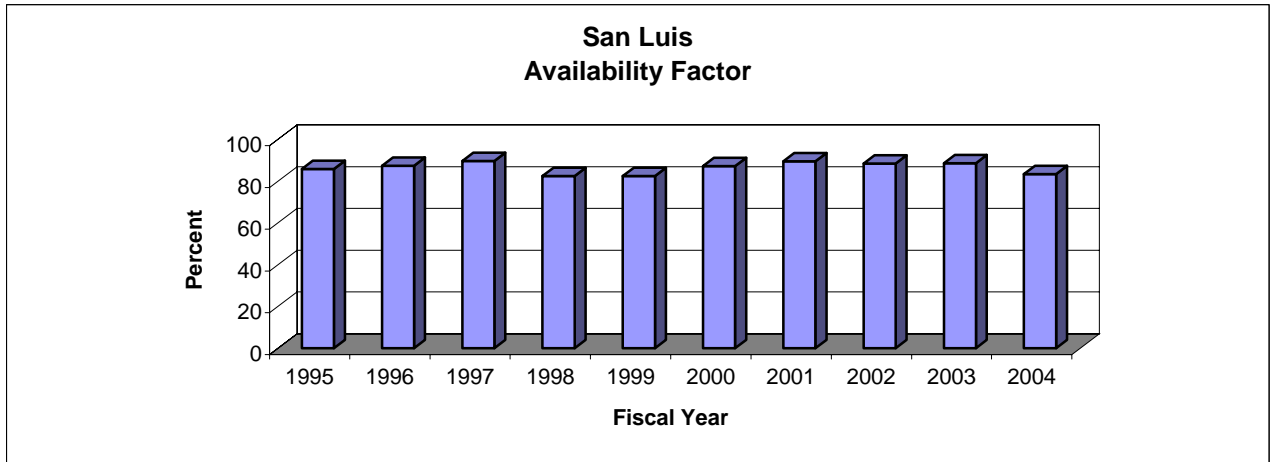
No Cost Data is Available

**Benchmark 4
Workforce Deployment**

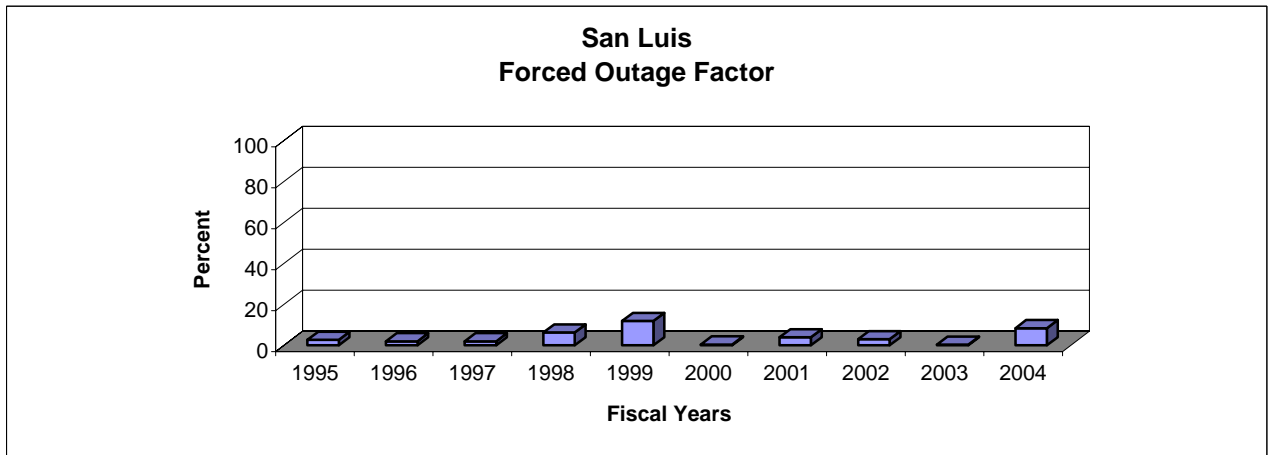
San Luis 2004 Equivalent Work Year Levels						
	Equip Work Year Charged to Powerplant	Leave Additive	Denver and Washington Equip Work Year Additive	Total Equip Work Year Allocated to Powerplant	Total Equip Work Year per Generating Unit	Total Equip Work Year per Megawatt
General	0.00	0.00	0.14	0.14	0.02	0.00
Operation	0.00	0.00	0.00	0.00	0.00	0.00
Maintenance	0.00	0.00	0.00	0.00	0.00	0.00
Total Staffing	0.00	0.00	0.14	0.14	0.02	0.00



**Benchmark 5
Availability Factor**

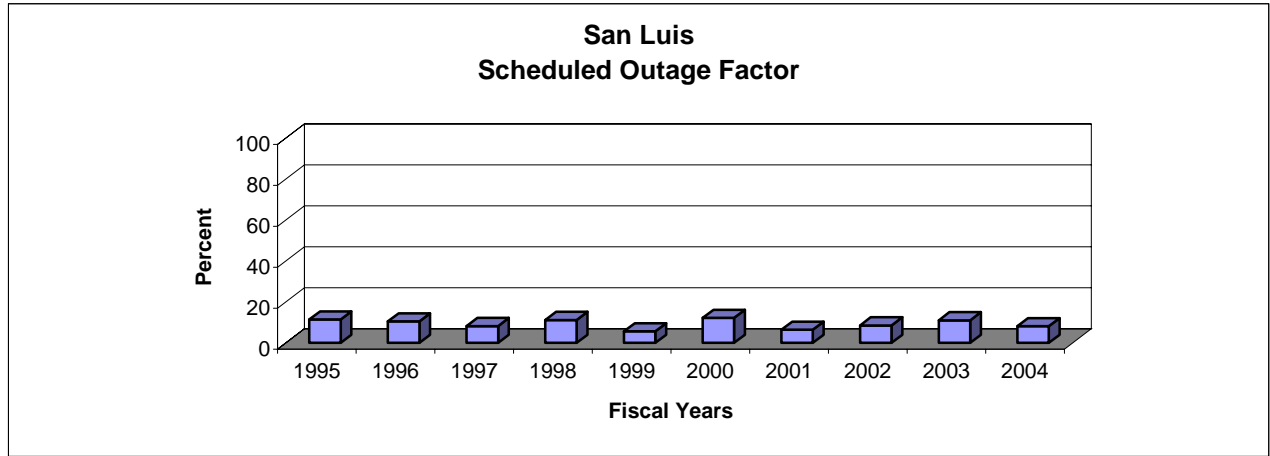


**Benchmark 6
Forced Outage Factor**

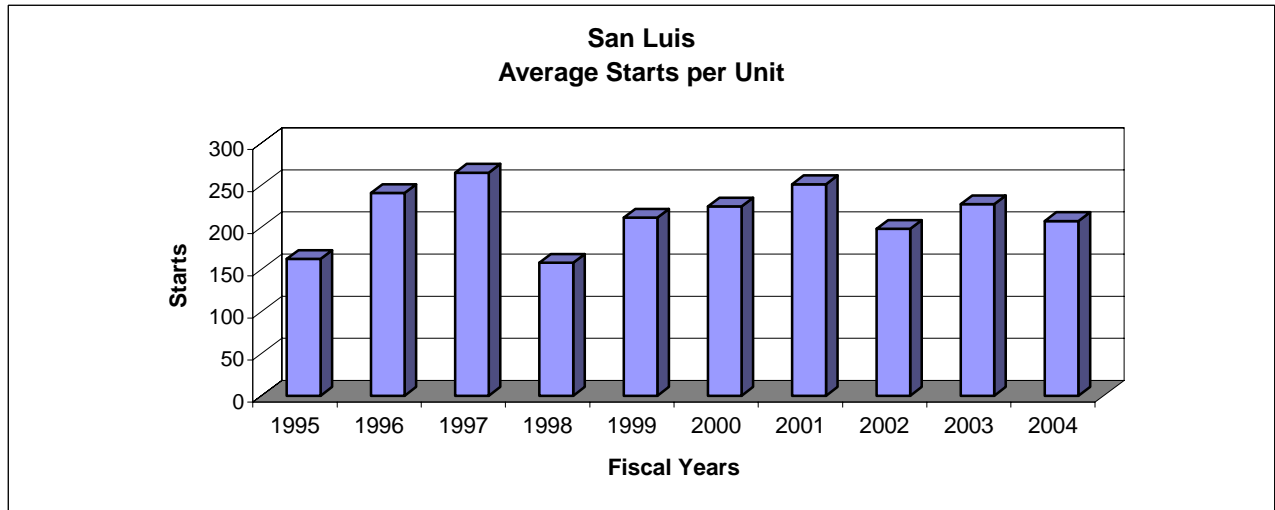


FY-98 - Fire in motor housing stator burned

Benchmark 7
Scheduled Outage Factor



Starts



Benchmark Data Comparison				
Fiscal Year 2004	San Luis Powerplant	Total Reclamation Average	Industry Average	Best Performers
Wholesale Firm Rate Mills/kWh	Not Applicable	*21.06	Not Available	Not Available
Production Cost as Percentage of Wholesale Firm Rate	Not Applicable	13.5%	Not Applicable	Not Applicable
O&M Cost \$/MWh	Not Applicable	2.77	Not Applicable	1.23
O&M Costs \$/MW	Not Applicable	7,316.97	Not Applicable	2,951.22
O&M Equip Work Year per MW	0.00	0.04	Not Available	0.000
Availability Factor	83.5	86.9	**89.2	99.97
Forced Outage Factor	8.4	0.7	**1.9	0.00
Scheduled Outage Factor	8.1	12.4	**8.9	0.02

*Weighted by Net Generation

**2003 NERC Average

***Energy Information Administration Data