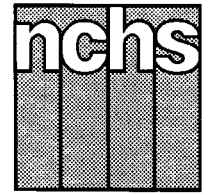


Monthly Vital Statistics Report



Provisional Data From the CENTERS FOR DISEASE CONTROL AND PREVENTION/National Center for Health Statistics

Births, Marriages, Divorces, and Deaths for February 1996

Births

According to provisional reports, an estimated 302,000 births occurred in the United States during February 1996. This was an increase of 5 percent from the provisional number of births reported for February 1995 (287,000). The birth rate, 14.4 live births per 1,000 population, was 1 percent higher than the rate of 14.3 for February 1995. The fertility rate, 64.1 live births per 1,000 women aged 15–44 years, was 2 percent higher than the comparable rate for February 1995 (63.1). The seasonally adjusted fertility rate (65.4) was 2 percent higher than the comparable rate for February 1995 (64.3).

During the first 2 months of 1996, an estimated 622,000 births occurred, a 2-percent decrease from the 637,000 reported for the first 2 months of 1995. The birth rate for this period decreased by 5 percent, from 15.1 in 1995 to 14.4 in 1996.

An estimated 3,877,000 live births occurred in the 12-month period ending with February 1996, a decline of 2 percent from the 3,971,000 births reported for the same period 1 year earlier. The birth rate of 14.7 was 3 percent lower than the rate of 15.2 for the preceding 12-month period. The fertility rate for the most recent 12-month period was 65.2, 3 percent lower than the rate for the 12

months ending with February 1995 (66.9). These lower rates continue the generally downward trend observed since early 1991.

Natural increase

For the 12-month period ending with February 1996, 1,563,000 persons were added to the population. This represented a rate of natural increase of 5.9, 9 percent lower than the rate of 6.5 for the preceding 12-month period. The decline in the rate of natural increase is due to a decrease in the birth rate and an increase in the death rate.

Provisional Vital Statistics for the United States

[Rates for infant deaths are deaths under 1 year per 1,000 live births; fertility rates are live births per 1,000 women aged 15–44 years; all other rates are per 1,000 total population. Data are subject to monthly reporting variation; see [Technical notes](#)]

Item	February				January–February				12 months ending with February				
	Number		Rate		Number		Rate		Number		Rate		
	1996	1995	1996	1995	1996	1995	1996	1995	1996	1995	1996	1995	1994
Live births	302,000	287,000	14.4	14.3	622,000	637,000	14.4	15.1	3,877,000	3,971,000	14.7	15.2	15.7
Fertility rate	64.1	63.1	63.8	66.4	65.2	66.9	68.5
Deaths	198,000	194,000	9.4	9.7	419,000	414,000	9.7	9.8	2,314,000	2,271,000	8.8	8.7	8.9
Infant deaths	2,300	2,400	7.4	8.0	4,700	5,100	7.5	8.0	28,900	31,100	7.5	7.9	8.3
Natural increase	104,000	93,000	5.0	4.6	203,000	223,000	4.7	5.3	1,563,000	1,700,000	5.9	6.5	6.8
Marriages	155,000	146,000	7.7	7.5	268,000	258,000	6.4	6.3	2,346,000	2,357,000	8.9	9.0	9.1
Divorces	86,000	89,000	4.1	4.4	181,000	185,000	4.2	4.4	1,165,000	1,192,000	4.4	4.6	4.6
Population base (in millions)	264.2	261.8	263.2	261.2	258.4

... Category not applicable.

NOTES: Figures include revisions received from the States. Twelve-month figures for the current year reflect revisions received for previous months, and figures for earlier years may differ from those previously published.



U.S. DEPARTMENT OF HEALTH AND HUMAN SERVICES
Public Health Service
Centers for Disease Control and Prevention
National Center for Health Statistics



Marriages

An estimated 155,000 couples married in February 1996, 6 percent more than in February a year earlier (146,000). The marriage rate per 1,000 population for February increased 3 percent, from 7.5 in 1995 to 7.7 in 1996.

The number of marriages performed in the first 2 months of 1996 totaled 268,000, 4 percent more than for the comparable period in 1995 (258,000). The marriage rate for the 2-month period was 2 percent higher in 1996 than in 1995—6.4 compared with 6.3.

Approximately 2,346,000 marriages occurred during the 12-month period ending with February 1996, less than a 1-percent difference when compared with the same period a year earlier (2,357,000). The marriage rate for the current 12-month period (8.9) was 1 percent lower than the rate for the same period ending with February 1995 (9.0).

Divorces

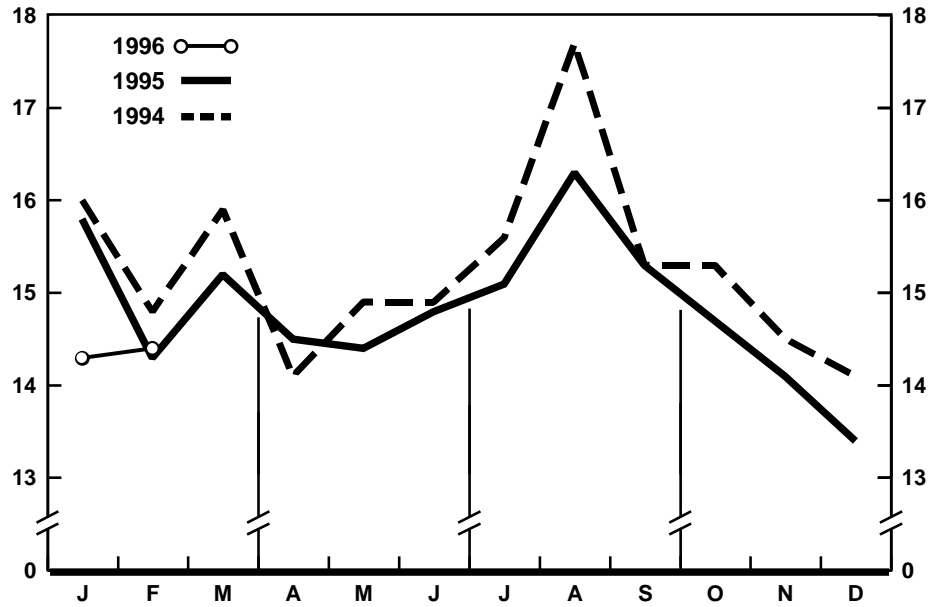
An estimated 86,000 couples divorced in February 1996, 3 percent fewer than in February 1995 (89,000). The divorce rate per 1,000 population was 7 percent lower for February in 1996 (4.1) than in 1995 (4.4).

The number of divorces granted for January–February 1996 was 181,000, 2 percent fewer than for the same period in 1995 (185,000). The divorce rate for the 2-month period dropped 5 percent between 1995 and 1996—from 4.4 to 4.2.

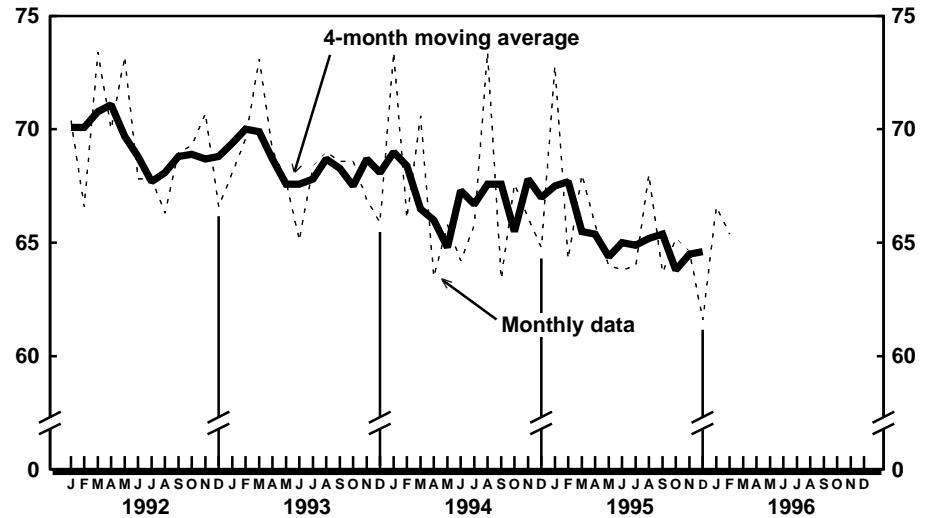
Approximately 1,165,000 couples divorced during the 12-month period ending with February 1996, a 2-percent decline from the number for the comparable period ending with February 1995 (1,192,000). The decrease in the number contributed to a 4-percent drop in the divorce rate—from 4.6 for the 12-month period ending with February 1995 to 4.4 for the current period.

Deaths

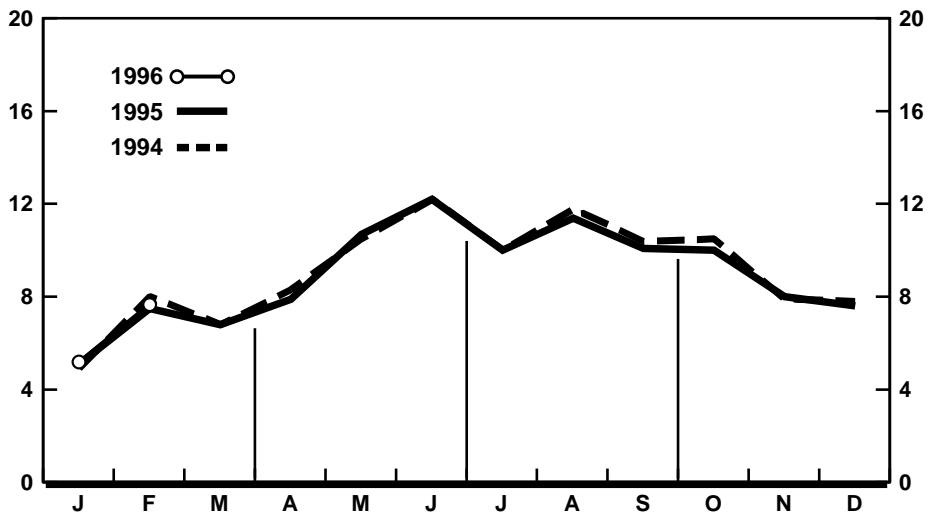
For February 1996 there were an estimated 198,000 deaths in the United States. The death rate was 9.4 deaths per 1,000 population, 3 percent lower than the rate of 9.7 for February a year earlier. Among the 198,000 deaths for February 1996 were 2,300 deaths at ages under 1 year.



Provisional birth rates per 1,000 population by month: United States, 1994–96



Provisional seasonally adjusted fertility rates per 1,000 women aged 15–44 years: United States, 1992–96



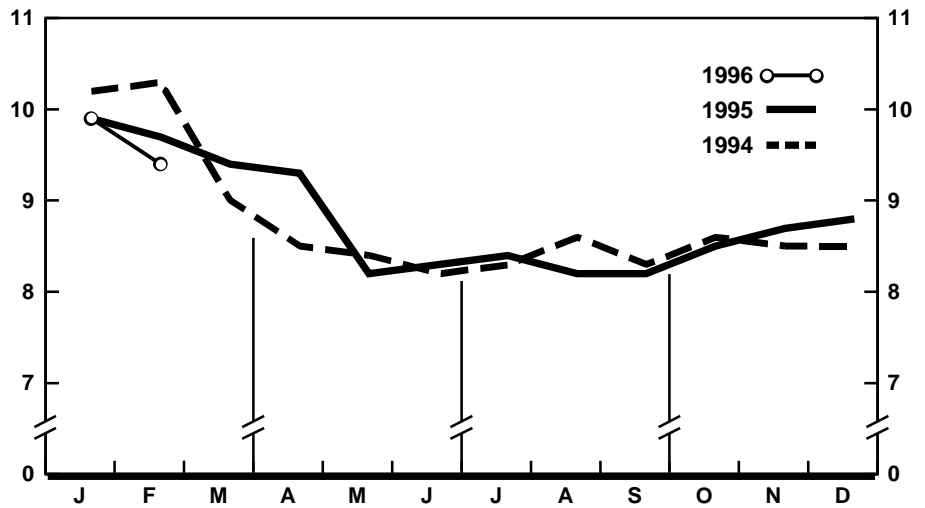
Provisional marriage rates per 1,000 population by month: United States, 1994–96

The death rate for the 12 months ending with February 1996 was 8.8 deaths per 1,000 population, 1 percent higher than the rate of 8.7 for the comparable 12-month period a year earlier. The infant mortality rate for this 12-month period was 7.5 per 1,000 live births, 5 percent lower than the rate of 7.9 for the 12 months ending with February 1995.

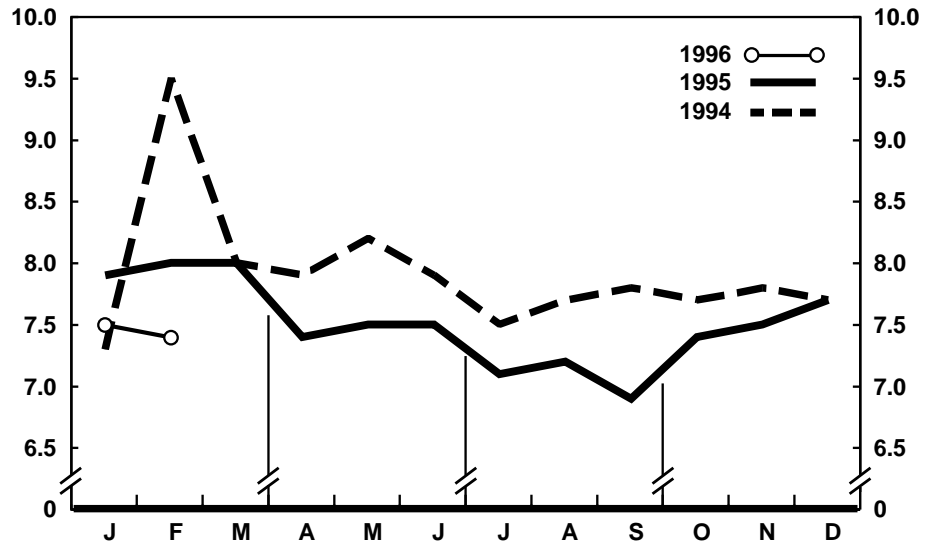
Current Mortality Sample, 12 months ending with January 1996—The provisional death rate for the 12 months ending with January 1996 was 878.5 per 100,000 population, an increase of less than 1 percent when compared with the rate of 874.4 for the 12-month period ending January 1995. The provisional age-adjusted death rate for the 12-month period ending with January 1996 was 501.6 per 100,000 U.S. standard million population, 1.2 percent lower than the rate of 507.9 for the 12-month period ending with January 1995. Age-adjusted death rates control for changes and variations in the age composition of the population; therefore, they are better indicators than crude rates for showing changes in mortality risk over time and for showing differences between race-sex groups within the population. Among the race-sex groups, the estimated age-adjusted death rate decreased for white males. By age the death rate for the total population decreased for the following age groups: Under 1 year, 55–64 years, and 65–74 years.

Among the major causes of death, the estimated death rate decreased between the two successive 12-month periods for Homicide and legal intervention and for Malignant neoplasms, including neoplasms of lymphatic and hematopoietic tissues. The death rate increased between the two successive 12-month periods for Diabetes mellitus and Alzheimer's disease. The increase for Alzheimer's disease may reflect changes in diagnostic practices rather than real increases in mortality from this cause.

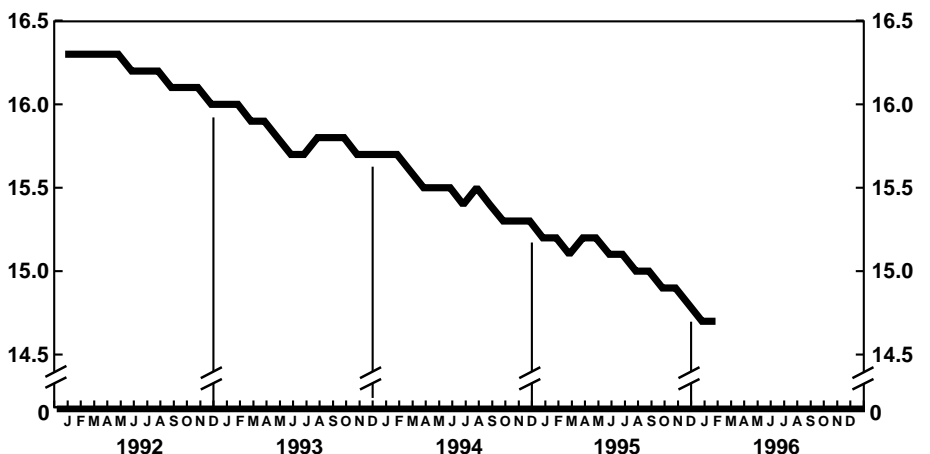
The death rate for injury by firearms for the 12 months ending with January 1996 was 13.5 per 100,000 population, a decrease of 8.8 percent from the rate of 14.8 for the comparable 12-month period a year earlier.



Provisional death rates per 1,000 population by month: United States, 1994–96

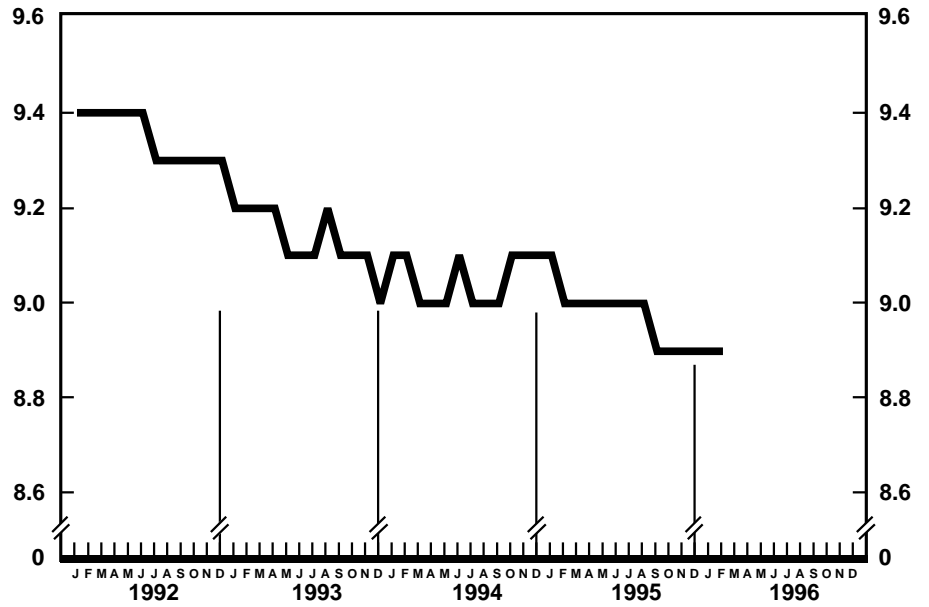


Provisional infant mortality rates per 1,000 live births by month: United States, 1994–96

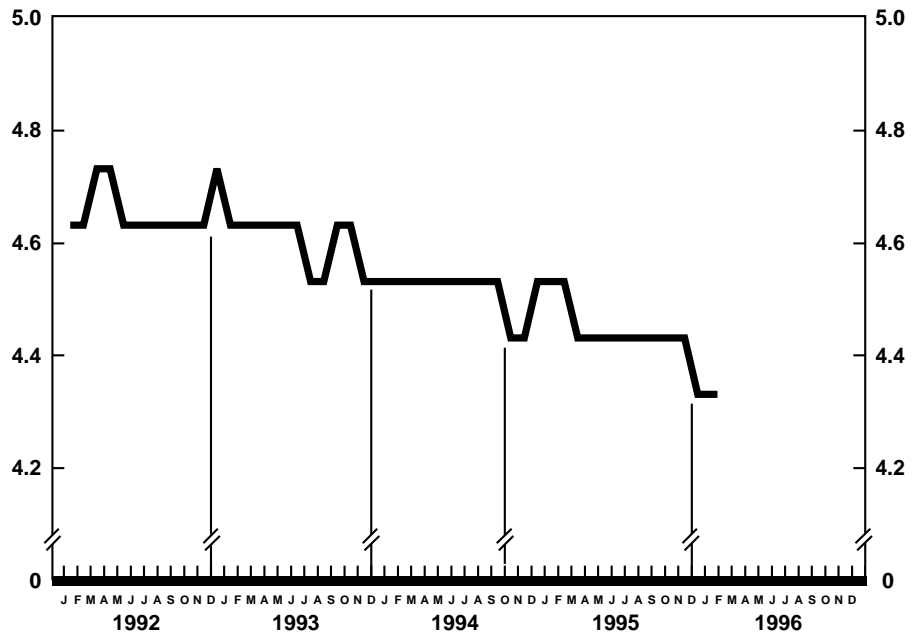


Provisional birth rates per 1,000 population for successive 12-month periods ending with month indicated: United States, 1992–96

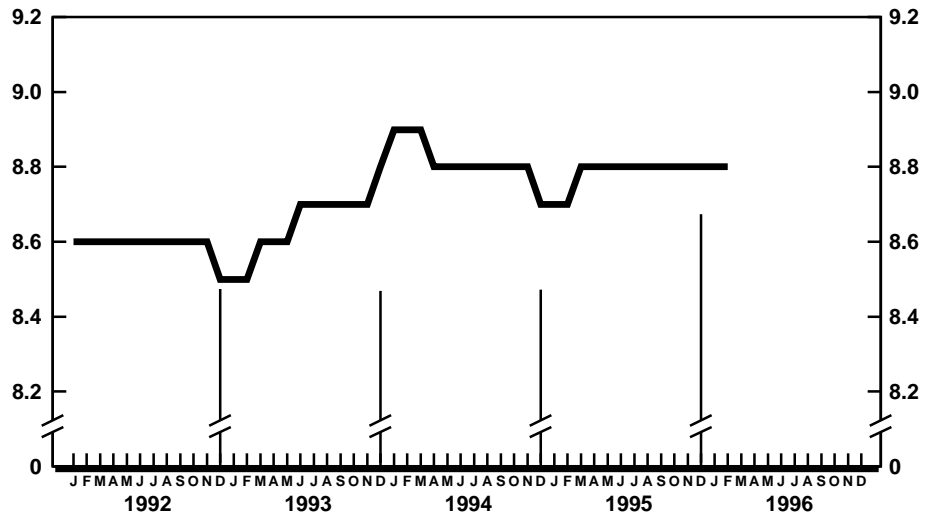
The infant mortality rate for the 12 months ending with January 1996 was 753.6 per 100,000 live births, 5.4 percent lower than the rate of 797.0 for the same 12-month period a year earlier. For infants under 28 days, the 12-month rate ending January 1996 was 477.5 compared with a rate of 502.6 for the 12-month period a year earlier. The infant mortality rate for infants 28 days–11 months was 275.0 compared with a rate of 294.1 for the 12-month period a year earlier. The changes in the mortality rates for infants under 28 days and for those 28 days–11 months were not statistically significant. Among causes of infant death, the changes in the infant mortality rates between the two successive 12-month periods were not significant.



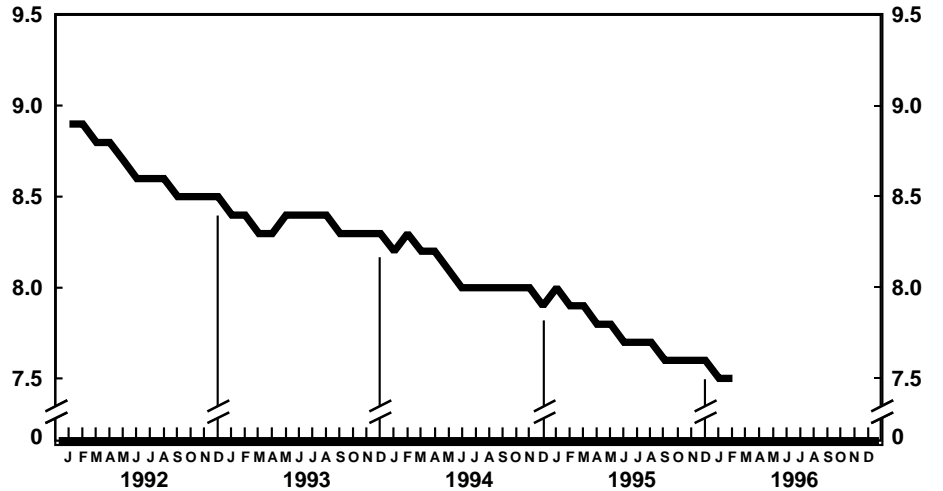
Provisional marriage rates per 1,000 population for successive 12-month periods ending with month indicated: United States, 1992–96



Provisional divorce rates per 1,000 population for successive 12-month periods ending with month indicated: United States, 1992–96



Provisional death rates per 1,000 population for successive 12-month periods ending with month indicated: United States, 1992-96



Provisional infant mortality rates per 1,000 live births for successive 12-month periods ending with month indicated: United States, 1992-96

Table 1. Provisional number of live births, marriages, divorces, deaths, and infant deaths and rates, by month: United States, January 1995–February 1996[Data are provisional and are subject to monthly reporting variation; see [Technical notes](#)]

Period	Live births				Marriages		Divorces		Deaths		Infant deaths	
	Number	Rate per 1,000 women aged 15–44 years		Number	Rate per 1,000 population	Number	Rate per 1,000 population	Number	Rate per 1,000 population	Number	Rate per 1,000 live births	
		Rate per 1,000 population	Seasonally adjusted ¹									
1995:												
January	350,000	15.8	69.4	72.8	111,000	5.1	96,000	4.3	220,000	9.9	2,700	7.9
February	287,000	14.3	63.1	64.3	146,000	7.5	89,000	4.4	194,000	9.7	2,400	8.0
March	338,000	15.2	67.1	68.0	148,000	6.8	98,000	4.4	208,000	9.4	2,700	8.0
April	313,000	14.5	64.1	65.8	165,000	7.9	98,000	4.6	200,000	9.3	2,300	7.4
May	321,000	14.4	63.5	64.0	238,000	10.7	103,000	4.6	184,000	8.2	2,500	7.5
June	318,000	14.8	65.2	63.8	263,000	12.2	104,000	4.8	180,000	8.3	2,400	7.5
July	337,000	15.1	66.6	64.0	224,000	10.0	97,000	4.4	188,000	8.4	2,400	7.1
August	364,000	16.3	72.1	68.0	254,000	11.4	99,000	4.4	184,000	8.2	2,400	7.2
September	331,000	15.3	67.6	63.7	219,000	10.1	99,000	4.6	178,000	8.2	2,200	6.9
October	328,000	14.7	64.9	65.2	224,000	10.0	98,000	4.4	190,000	8.5	2,500	7.4
November	306,000	14.1	62.6	64.6	174,000	8.0	95,000	4.4	188,000	8.7	2,300	7.5
December	300,000	13.4	59.3	61.6	169,000	7.6	92,000	4.1	197,000	8.8	2,400	7.7
1996:												
January	320,000	14.3	63.5	66.6	113,000	5.2	96,000	4.3	221,000	9.9	2,400	7.5
February	302,000	14.4	64.1	65.4	155,000	7.7	86,000	4.1	198,000	9.4	2,300	7.4

¹The method of seasonal adjustment, developed by the U.S. Bureau of the Census, is described in *The X-11 Variant of the Census Method II Seasonal Adjustment Program*, Technical Paper No. 15 (1967 revision).

NOTE: Figures include all revisions received from the States and, therefore, may differ from those previously published.

Table 2. Provisional number of live births and deaths: Each division and State, February 1995 and 1996, and cumulative figures, 1994–96

[Data are estimates by State of residence; see [Technical notes](#)]

Area	Live births					Deaths				
	February		January–February			February		January–February		
	1996	1995	1996	1995	1994	1996	1995	1996	1995	1994
New England	17,582	13,419	29,764	29,659	27,656	9,510	11,033	20,343	21,485	21,408
Maine	1,078	1,026	1,979	1,885	1,754	1,105	1,043	2,137	1,907	2,000
New Hampshire	626	1,350	1,695	2,279	2,344	797	860	1,507	1,689	1,700
Vermont	574	597	1,049	1,132	886	532	507	938	1,002	814
Massachusetts	11,456	4,647	17,460	13,712	13,359	4,073	5,453	9,476	10,340	9,778
Rhode Island	1,029	972	1,820	1,647	1,897	765	828	1,596	1,690	1,693
Connecticut	2,819	4,827	5,761	9,004	7,416	2,238	2,342	4,689	4,857	5,423
Middle Atlantic	30,274	33,603	76,645	77,832	85,450	28,743	31,090	66,035	68,847	69,287
New York	14,519	14,525	42,995	36,290	44,561	12,331	13,307	29,904	31,705	31,503
New Jersey	4,640	7,242	8,802	15,735	15,193	5,880	6,526	12,723	13,366	13,304
Pennsylvania	11,115	11,836	24,848	25,807	25,696	10,532	11,257	23,408	23,776	24,480
East North Central	52,374	47,162	101,489	97,168	103,083	32,783	33,132	70,253	68,282	75,261
Ohio	12,379	10,692	24,372	23,725	28,151	8,017	8,657	18,063	18,167	21,592
Indiana	7,205	6,895	13,423	12,759	13,120	5,390	4,634	10,011	8,580	9,850
Illinois	14,258	14,161	29,429	29,159	27,644	8,719	9,453	18,616	19,333	19,732
Michigan	12,830	10,375	23,518	21,089	22,572	6,735	6,738	15,016	14,403	15,410
Wisconsin	5,702	5,039	10,747	10,436	11,596	3,922	3,650	8,547	7,799	8,677
West North Central	17,921	17,901	40,434	41,978	40,302	15,180	13,848	31,607	31,188	33,262
Minnesota	4,918	4,546	10,027	9,561	10,260	2,834	2,985	6,599	6,589	6,956
Iowa	1,329	2,631	4,344	5,334	5,302	3,313	1,078	6,193	3,960	4,858
Missouri	5,572	5,760	12,738	13,438	13,605	4,599	5,497	9,648	11,666	11,755
North Dakota	650	577	1,295	1,401	1,311	493	483	983	1,103	1,068
South Dakota	685	728	1,208	1,492	1,582	562	556	896	1,138	1,282
Nebraska	2,115	1,950	3,955	3,772	3,398	1,351	1,353	2,689	2,689	2,627
Kansas	2,652	1,709	6,867	6,980	4,844	2,028	1,896	4,599	4,043	4,716
South Atlantic	54,051	54,951	106,297	114,047	108,466	38,705	39,015	83,527	80,813	80,569
Delaware	801	764	1,701	1,639	1,656	506	505	1,156	1,064	1,073
Maryland	5,773	5,510	11,670	12,159	9,284	3,197	3,516	7,322	6,972	6,009
District of Columbia	664	689	1,362	1,477	1,592	487	504	1,086	1,132	1,171
Virginia	6,591	8,459	11,588	17,682	15,427	4,346	4,544	9,157	9,805	10,027
West Virginia	1,373	1,296	3,214	3,338	3,427	867	1,688	2,795	3,288	3,793
North Carolina	8,897	9,740	17,036	17,565	16,649	6,686	5,690	12,353	11,831	12,893
South Carolina	5,143	3,920	9,395	8,390	8,667	2,868	3,051	6,894	5,852	5,610
Georgia	10,286	9,561	20,706	20,684	18,958	5,319	5,093	11,797	11,061	10,358
Florida	14,523	15,012	29,625	31,113	32,806	14,429	14,424	30,967	29,808	29,635
East South Central	14,714	16,076	32,578	36,993	40,487	12,763	14,353	27,353	29,608	30,941
Kentucky	4,163	3,055	8,900	7,706	8,490	3,167	4,106	7,204	7,726	7,290
Tennessee	3,205	5,711	7,629	12,318	13,400	3,654	4,465	7,028	9,289	9,379
Alabama	4,413	4,242	10,168	9,759	10,521	3,489	3,639	7,954	7,912	9,042
Mississippi	2,933	3,068	5,881	7,210	8,076	2,453	2,143	5,167	4,681	5,230
West South Central	51,118	46,510	84,006	91,650	76,509	23,705	18,959	44,813	43,214	47,563
Arkansas	2,761	2,578	5,655	5,454	5,676	2,471	2,110	4,778	4,053	5,481
Louisiana	4,810	5,920	11,691	13,358	11,459	3,401	3,398	7,642	7,443	7,306
Oklahoma	3,275	3,426	7,965	7,061	8,463	2,834	2,466	6,158	5,628	6,371
Texas ¹	40,272	34,586	58,695	65,777	50,911	14,999	10,985	26,235	26,090	28,405
Mountain	19,438	17,986	41,959	38,822	37,693	10,372	8,568	21,300	17,825	18,762
Montana	855	885	1,701	1,764	1,569	662	604	1,384	1,338	1,300
Idaho	1,512	1,135	3,213	2,569	2,832	667	618	1,506	1,399	1,558
Wyoming	419	558	925	1,129	941	262	326	567	673	610
Colorado	4,003	3,803	8,242	8,224	8,439	2,054	1,442	4,686	3,735	4,590
New Mexico	2,271	2,073	4,594	4,636	4,617	1,091	957	2,294	1,972	2,041
Arizona	6,509	5,678	15,038	11,700	8,823	3,271	2,867	6,323	4,948	4,787
Utah	3,083	2,798	5,683	5,817	6,264	1,026	809	1,985	1,757	1,839
Nevada	786	1,056	2,563	2,983	4,208	1,339	945	2,555	2,003	2,037
Pacific	47,935	42,527	107,259	106,599	124,331	25,753	23,973	53,645	52,393	51,604
Washington	5,252	5,833	11,570	11,999	12,166	2,607	3,154	6,795	6,316	6,282
Oregon	3,265	3,510	7,962	7,139	7,805	2,483	2,188	5,499	5,261	5,503
California ¹	37,091	31,100	83,062	82,989	98,561	19,797	17,828	39,615	39,172	38,202
Alaska	746	777	1,498	1,716	2,716	202	142	359	315	404
Hawaii	1,581	1,307	3,167	2,756	3,083	664	661	1,377	1,329	1,213
Puerto Rico ²	4,771	---	10,430	---	---	2,231	---	4,526	---	---

--- Data not available.

¹Figures include adjustments for varying lengths of reporting periods; see [Technical notes](#).

²Data for Puerto Rico are not included in U.S. total figures.

NOTES: Figures include all revisions received from the States. Cumulative figures for the current year reflect revisions received for previous months, and figures for earlier years may differ from those previously published.

Table 3. Provisional number of marriages and divorces: Each division and State, February 1995 and 1996, and cumulative figures, 1994–96

[By State of occurrence. Number of events reported; see [Technical notes](#). Divorces include reported annulments]

Area	Marriages					Divorces				
	February		January–February			February		January–February		
	1996	1995	1996	1995	1994	1996	1995	1996	1995	1994
New England	3,785	4,123	7,675	8,793	12,288	¹ 2,137	2,667	¹ 4,181	5,308	5,388
Maine	351	350	945	648	674	548	169	698	662	443
New Hampshire	332	431	870	820	817	315	429	735	769	776
Vermont	322	297	545	629	469	239	438	541	753	513
Massachusetts	1,665	1,912	3,493	4,717	8,206	---	587	---	1,207	1,501
Rhode Island	333	301	555	504	511	214	318	474	572	556
Connecticut	782	832	1,267	1,475	1,611	821	726	1,733	1,345	1,599
Middle Atlantic	11,430	12,713	28,262	24,816	24,160	5,767	6,340	19,362	16,581	17,860
New York ²	7,066	8,111	20,059	14,876	13,675	1,290	1,808	10,232	6,616	8,769
New Jersey	2,093	2,207	3,475	4,011	4,261	1,823	1,844	3,818	3,893	3,356
Pennsylvania	2,271	2,395	4,728	5,929	6,224	2,654	2,688	5,312	6,072	5,735
East North Central	18,214	19,332	29,100	33,918	31,992	¹ 12,323	¹ 12,378	¹ 21,363	¹ 24,455	¹ 22,638
Ohio	4,451	5,030	6,537	10,388	9,404	3,852	3,712	5,937	8,065	7,817
Indiana	2,653	2,879	4,387	5,024	4,416	---	---	---	---	---
Illinois	4,910	5,079	8,448	8,753	8,652	2,678	3,094	5,314	6,206	5,577
Michigan	4,803	4,825	6,511	6,589	6,429	4,220	4,213	7,140	7,251	6,585
Wisconsin	1,397	1,519	3,217	3,164	3,091	1,573	1,359	2,972	2,933	2,659
West North Central	7,914	8,102	16,531	17,090	15,726	5,955	6,132	12,657	12,357	13,364
Minnesota	1,472	1,351	2,793	2,667	2,521	1,056	1,128	2,231	2,279	2,823
Iowa	794	978	2,211	2,310	2,135	957	867	1,827	2,001	2,002
Missouri	2,677	2,969	6,708	6,636	5,437	2,076	2,091	4,250	4,793	4,786
North Dakota	212	179	466	389	391	164	153	357	318	323
South Dakota	334	391	558	791	709	218	194	442	464	412
Nebraska	613	513	1,124	1,183	1,205	446	552	991	1,056	1,052
Kansas	1,812	1,721	2,671	3,114	3,328	1,038	1,147	2,559	1,446	1,966
South Atlantic	28,932	28,795	56,982	55,785	57,184	15,694	17,213	29,803	35,221	34,779
Delaware	277	245	485	443	488	302	274	554	696	463
Maryland	2,042	2,659	4,270	4,542	4,848	839	1,158	1,733	2,372	2,385
District of Columbia	105	50	203	84	110	77	74	154	148	294
Virginia	3,987	3,702	6,216	7,981	8,453	1,912	1,967	3,541	4,338	4,185
West Virginia	521	493	1,166	1,058	1,204	528	367	899	1,142	1,545
North Carolina	3,254	3,555	7,710	6,847	5,203	2,668	2,521	4,938	5,206	4,830
South Carolina	3,243	3,097	5,749	5,573	6,439	1,277	1,136	2,472	2,206	2,221
Georgia	3,385	3,775	8,650	8,228	7,783	3,088	2,927	5,503	5,683	5,589
Florida	12,118	11,219	22,533	21,029	22,656	5,003	6,789	10,009	13,430	13,267
East South Central	11,453	13,119	24,522	28,014	24,633	7,948	8,682	16,804	16,397	14,099
Kentucky	2,617	2,612	5,147	6,951	6,213	1,722	1,898	3,590	4,086	2,941
Tennessee	5,044	5,891	10,844	12,702	9,895	3,385	3,225	6,644	5,895	5,363
Alabama	2,465	2,858	5,747	5,838	5,790	1,698	2,050	3,840	4,309	4,279
Mississippi	1,327	1,758	2,784	2,523	2,735	1,143	1,509	2,730	2,107	1,516
West South Central	22,109	18,753	44,969	45,601	47,348	¹ 9,927	¹ 10,484	¹ 23,202	¹ 22,480	¹ 24,851
Arkansas	1,323	2,602	2,906	3,607	6,032	653	1,225	1,350	1,743	3,244
Louisiana	2,053	2,669	5,523	5,560	5,578	---	---	---	---	---
Oklahoma	1,910	1,982	3,394	3,430	3,722	1,606	1,759	3,219	3,559	3,472
Texas ³	16,823	11,500	33,146	33,004	32,016	7,668	7,500	18,633	17,178	18,135
Mountain	20,526	19,257	41,156	36,356	37,941	¹ 5,164	¹ 5,572	¹ 10,326	¹ 11,123	¹ 12,036
Montana	312	313	698	544	583	360	316	695	567	634
Idaho	984	816	2,086	2,143	2,542	451	494	1,109	1,110	1,224
Wyoming	388	428	527	570	462	263	253	466	526	387
Colorado	2,248	2,073	3,979	3,784	3,860	---	---	---	---	2,898
New Mexico ^{4,5}	1,452	993	2,474	1,742	1,536	887	808	1,936	1,574	1,458
Arizona ²	2,992	2,749	6,310	5,192	6,206	1,981	1,961	4,002	3,987	3,899
Utah	1,661	1,007	3,036	2,872	2,711	866	740	1,402	1,440	1,536
Nevada	10,489	10,878	22,046	19,509	20,041	356	1,000	716	1,919	---
Pacific	24,070	15,975	43,331	34,033	37,297	¹ 4,645	¹ 4,196	¹ 8,950	¹ 8,945	¹ 8,670
Washington	2,318	2,874	4,636	5,542	4,049	2,725	2,377	5,450	5,062	4,686
Oregon	1,322	1,225	2,658	3,111	2,761	1,359	1,267	2,448	2,563	2,844
California	18,619	10,104	32,649	21,956	27,279	---	---	---	---	---
Alaska	295	347	649	708	716	150	252	344	499	499
Hawaii	1,516	1,425	2,739	2,716	2,492	411	300	708	821	641
Puerto Rico ⁶	---	---	---	---	---	---	---	---	---	---

--- Data not available.

¹Excludes figures for State(s) shown below as not available.

²Figures for marriages are marriage licenses issued for some counties.

³Figures include adjustments for varying lengths of reporting periods; see [Technical notes](#).

⁴Figures for marriages are marriage licenses issued.

⁵Figures for divorces include estimates for some counties.

⁶Data for Puerto Rico are not included in U.S. total figures.

NOTES: Figures include all revisions received from the States. Cumulative figures for the current year reflect revisions received for previous months, and figures for earlier years may differ from those previously published.

Table 4. Provisional number of deaths under 1 year and infant mortality rates: Each division and State, 12 months ending with February 1995 and 1996

[Data are estimates by State of residence. Figures should be interpreted with caution because of conversion of place of occurrence to place of residence; see [Technical notes](#). Infant mortality rates are deaths under 1 year per 1,000 live births in specified area]

Area	12 months ending with February			
	1996		1995	
	Number	Rate	Number	Rate
New England	914	5.4	1,017	5.7
Maine	82	5.8	89	6.2
New Hampshire	65	4.5	95	6.5
Vermont	39	5.8	49	6.6
Massachusetts	387	5.0	479	5.7
Rhode Island	83	6.5	79	6.0
Connecticut	258	6.2	226	5.2
Middle Atlantic	3,974	7.5	4,310	7.9
New York	2,057	7.6	2,210	8.2
New Jersey	802	7.4	868	7.4
Pennsylvania	1,115	7.4	1,232	7.8
East North Central	5,251	8.3	5,591	8.8
Ohio	1,292	8.3	1,376	8.7
Indiana	748	8.8	789	9.5
Illinois	1,606	8.6	1,701	8.9
Michigan	1,104	8.2	1,193	8.6
Wisconsin	501	7.4	532	7.9
West North Central	1,797	7.1	1,941	7.7
Minnesota	395	6.2	445	7.0
Iowa	225	6.4	255	7.1
Missouri	576	7.8	595	7.9
North Dakota	42	4.9	56	6.4
South Dakota	86	8.4	120	11.4
Nebraska	176	7.5	196	8.4
Kansas	297	8.0	274	7.7
South Atlantic	5,610	8.7	5,829	8.7
Delaware	71	7.0	69	6.7
Maryland	597	8.3	662	8.9
District of Columbia	158	17.9	190	19.9
Virginia	663	7.9	734	7.5
West Virginia	161	7.7	146	6.8
North Carolina	940	9.2	997	9.7
South Carolina	484	9.5	432	8.5
Georgia	1,089	9.6	1,086	9.8
Florida	1,447	7.8	1,513	8.0
East South Central	2,079	9.5	2,160	9.5
Kentucky	396	7.6	412	8.1
Tennessee	678	9.8	709	9.5
Alabama	614	10.0	614	10.2
Mississippi	391	10.9	425	10.0
West South Central	3,378	7.1	3,730	7.7
Arkansas	278	8.0	302	8.8
Louisiana	597	9.1	666	9.5
Oklahoma	417	8.9	425	9.6
Texas ¹	2,086	6.4	2,337	6.9
Mountain	1,665	6.8	1,771	7.2
Montana	81	7.3	102	9.1
Idaho	114	6.2	121	7.1
Wyoming	47	7.7	62	9.4
Colorado	360	7.2	345	6.4
New Mexico	173	6.4	250	8.9
Arizona	553	7.7	540	7.8
Utah	205	5.3	227	5.9
Nevada	132	6.3	124	6.1
Pacific	4,275	6.0	4,580	6.4
Washington	315	4.1	439	5.5
Oregon	258	5.9	285	6.8
California ¹	3,513	6.2	3,659	6.5
Alaska	75	7.6	74	6.7
Hawaii	114	6.1	123	6.5
Puerto Rico ²	---	---	---	---

--- Data not available.

¹Figures include adjustments for varying lengths of reporting periods; see [Technical notes](#).

²Data for Puerto Rico are not included in U.S. total figures.

NOTES: Figures include all revisions received from the States. Figures for the current year reflect revisions received for previous months, and figures for earlier years may differ from those previously published.

Table 5. Provisional number of deaths and death rates, by age, race, and sex, and age-adjusted death rates by race and sex: United States, January 1995 and 1996 and 12 months ending with January 1995 and 1996

[Data are provisional, estimated from a 10-percent sample of deaths. Age-specific rates on an annual basis per 100,000 population in specified group; age-adjusted rates per 100,000 U.S. standard million population; see [Technical notes](#). Because of rounding of estimates, figures may not add to totals. For method of computation and information on standard errors of the estimates, see [Technical notes](#)]

Age, race, and sex	January				12 months ending with January			
	1996		1995		1996		1995	
	Number	Rate	Number	Rate	Number	Rate	Number	Rate
All races, both sexes¹								
All ages	221,000	989.9	220,000	988.7	2,311,000	878.5	2,281,000	874.4
Under 1 year.					29,000	² 753.0	31,600	² 804.7
1-4 years	} 3,650	74.5	4,070	83.2	6,540	41.6	7,230	45.5
5-14 years					8,300	21.7	8,580	22.8
15-24 years	2,820	92.7	2,880	94.4	34,480	95.9	35,910	99.8
25-34 years	5,070	147.5	5,420	155.3	57,920	141.9	59,030	142.7
35-44 years	9,260	254.7	9,150	255.8	102,750	241.3	101,460	242.7
45-54 years	12,390	459.6	13,230	510.6	142,310	455.9	136,960	456.4
55-64 years	21,700	1,206.9	22,130	1,237.0	234,010	1,106.4	239,110	1,136.7
65-74 years	45,380	2,857.8	46,700	2,933.2	477,640	2,546.5	484,580	2,585.8
75-84 years	63,570	6,647.2	63,150	6,738.6	651,990	5,834.9	642,680	5,835.1
85 years and over.	57,480	18,411.1	52,820	17,367.0	562,920	15,447.9	534,120	15,321.9
Not stated	50	...	140	...	930	...	750	...
Age-adjusted rate ³	549.4	...	563.7	...	501.6	...	507.9
All races, male¹								
All ages	110,900	1,015.3	110,740	1,020.8	1,171,930	912.6	1,164,570	914.0
Under 1 year.					16,100	² 817.3	17,650	² 879.4
1-4 years	} 2,060	82.2	2,330	93.1	3,720	46.2	4,260	52.5
5-14 years					5,100	26.1	5,050	26.2
15-24 years	2,170	139.7	2,310	148.3	26,300	143.4	27,800	151.2
25-34 years	3,550	206.7	3,880	222.3	42,050	206.2	42,980	207.7
35-44 years	6,340	351.5	6,140	346.2	71,090	336.6	70,520	339.9
45-54 years	8,080	613.5	8,250	651.9	90,630	594.4	86,130	587.2
55-64 years	13,040	1,524.8	12,800	1,506.0	140,720	1,399.8	145,370	1,454.4
65-74 years	25,710	3,636.1	26,600	3,764.3	273,090	3,275.6	276,640	3,333.0
75-84 years	31,360	8,395.7	30,980	8,554.5	319,520	7,362.2	313,430	7,400.9
85 years and over.	18,580	21,174.1	17,380	20,484.0	183,000	17,958.8	174,270	17,674.4
Not stated	20	...	70	...	600	...	480	...
Age-adjusted rate ³	702.0	...	717.9	...	644.5	...	654.2
All races, female¹								
All ages	110,460	965.6	108,960	958.1	1,136,810	844.7	1,117,440	837.0
Under 1 year.					12,850	² 683.5	13,930	² 725.5
1-4 years	} 1,590	66.5	1,750	73.3	2,820	36.7	2,970	38.3
5-14 years					3,190	17.1	3,530	19.2
15-24 years	650	43.6	570	38.1	8,180	46.5	8,110	46.1
25-34 years	1,520	88.4	1,540	88.2	15,870	77.8	16,050	77.6
35-44 years	2,920	159.4	3,010	166.9	31,660	147.5	30,940	146.9
45-54 years	4,310	312.6	4,970	374.9	51,690	323.8	50,830	331.3
55-64 years	8,650	917.6	9,340	994.5	93,290	840.6	93,740	849.2
65-74 years	19,680	2,234.1	20,100	2,269.7	204,540	1,963.0	207,950	1,991.9
75-84 years	32,210	5,526.6	32,170	5,594.9	332,470	4,864.9	329,260	4,857.8
85 years and over.	38,900	17,331.0	35,430	16,156.5	379,920	14,478.7	359,850	14,388.2
Not stated	30	...	70	...	330	...	270	...
Age-adjusted rate ³	422.5	...	437.3	...	382.3	...	385.9
White								
All ages	191,500	1,032.8	188,770	1,022.7	1,984,780	909.5	1,960,480	904.8
Under 1 year.					19,120	² 634.6	20,620	² 671.4
1-4 years	} 2,380	61.4	2,790	72.0	4,500	36.3	4,790	38.2
5-14 years					6,140	20.3	6,070	20.3
15-24 years	1,900	78.4	1,830	75.0	24,590	85.8	25,040	87.1
25-34 years	3,440	122.8	3,790	132.7	40,480	121.4	41,860	123.7
35-44 years	6,580	217.3	6,380	214.0	73,170	206.4	72,210	207.3
45-54 years	9,660	419.5	10,170	458.3	109,460	410.2	105,290	409.6
55-64 years	17,510	1,128.1	17,960	1,160.2	189,690	1,038.1	195,070	1,071.3
65-74 years	39,700	2,821.4	40,050	2,832.8	413,110	2,483.5	419,100	2,518.3
75-84 years	57,290	6,606.7	57,070	6,714.8	585,910	5,782.8	578,590	5,799.2
85 years and over.	53,010	18,654.5	48,610	17,561.9	517,920	15,623.5	491,300	15,440.0
Not stated	30	...	130	...	700	...	540	...
Age-adjusted rate ³	521.7	...	531.3	...	474.8	...	480.3

See footnotes at end of table.

Table 5. Provisional number of deaths and death rates, by age, race, and sex, and age-adjusted death rates by race and sex: United States, January 1995 and 1996 and 12 months ending with January 1995 and 1996—Con.

[Data are provisional, estimated from a 10-percent sample of deaths. Age-specific rates on an annual basis per 100,000 population in specified group; age-adjusted rates per 100,000 U.S. standard million population; see [Technical notes](#). Because of rounding of estimates, figures may not add to totals. For method of computation and information on standard errors of the estimates, see [Technical notes](#)]

Age, race, and sex	January				12 months ending with January			
	1996		1995		1996		1995	
	Number	Rate	Number	Rate	Number	Rate	Number	Rate
White male								
All ages	94,700	1,040.8	94,450	1,043.3	996,310	930.7	988,660	930.3
Under 1 year	} 1,390	69.9	1,640	82.5	10,830	² 701.0	11,420	² 726.5
1–4 years					2,670	42.0	2,900	45.1
5–14 years					3,750	24.1	3,540	23.0
15–24 years					1,380	110.9	1,440	115.2
25–34 years	2,490	176.0	2,800	194.1	29,990	178.2	30,900	180.7
35–44 years	4,570	301.0	4,450	297.8	51,300	288.6	51,050	292.3
45–54 years	6,320	555.7	6,470	590.8	70,230	533.0	66,710	525.6
55–64 years	10,520	1,409.2	10,550	1,418.6	115,460	1,314.4	119,800	1,369.5
65–74 years	22,690	3,594.9	22,950	3,631.9	237,900	3,194.1	240,900	3,246.6
75–84 years	28,320	8,331.9	28,190	8,556.7	288,710	7,311.0	283,100	7,360.9
85 years and over	17,010	21,433.1	15,880	20,751.9	166,550	18,103.3	158,970	17,861.8
Not stated	20	...	70	...	490	...	350	...
Age-adjusted rate ³	663.6	...	678.5	...	609.1	...	617.4
White female								
All ages	96,800	1,025.1	94,330	1,002.9	988,460	889.1	971,810	880.2
Under 1 year	} 990	52.5	1,140	60.4	8,290	² 564.7	9,190	² 613.1
1–4 years					1,830	30.3	1,890	30.9
5–14 years					2,390	16.2	2,530	17.4
15–24 years					520	44.0	390	32.8
25–34 years	960	69.2	990	70.0	10,490	63.6	10,960	65.4
35–44 years	2,010	133.2	1,930	129.8	21,870	123.7	21,160	121.9
45–54 years	3,340	286.6	3,710	330.1	39,230	290.4	38,580	296.5
55–64 years	6,990	867.7	7,410	921.3	74,230	782.3	75,280	795.7
65–74 years	17,010	2,192.2	17,100	2,187.0	175,200	1,907.3	178,190	1,932.2
75–84 years	28,970	5,494.5	28,870	5,547.0	297,200	4,806.7	295,490	4,819.6
85 years and over	36,000	17,577.8	32,730	16,343.1	351,370	14,671.0	332,330	14,499.6
Not stated	10	...	60	...	210	...	190	...
Age-adjusted rate ³	403.7	...	410.0	...	362.1	...	365.7
Black								
All ages	26,800	947.6	27,720	991.3	286,120	861.9	283,790	867.2
Under 1 year	} 1,160	151.6	1,150	151.0	8,960	² 1,431.3	9,740	² 1,526.6
1–4 years					1,800	72.5	2,110	84.2
5–14 years					1,810	30.7	2,010	34.6
15–24 years					790	170.5	910	197.5
25–34 years	1,490	325.3	1,490	322.1	15,860	292.7	15,270	280.2
35–44 years	2,500	562.0	2,490	572.4	27,140	522.2	26,760	529.7
45–54 years	2,480	876.9	2,710	1,011.0	29,310	900.5	28,070	907.8
55–64 years	3,760	2,070.5	3,730	2,082.4	39,000	1,830.1	38,600	1,844.2
65–74 years	5,010	3,637.8	6,010	4,403.4	56,680	3,503.1	58,050	3,614.6
75–84 years	5,530	7,800.4	5,360	7,677.6	57,590	6,938.6	56,120	6,786.0
85 years and over	4,060	17,119.4	3,860	16,709.0	39,270	14,280.0	37,400	15,020.1
Not stated	20	...	10	...	210	...	190	...
Age-adjusted rate ³	824.7	...	880.6	...	762.5	...	774.8
Black male								
All ages	14,490	1,079.9	14,440	1,088.9	154,210	979.4	154,030	992.0
Under 1 year	} 600	154.6	590	152.7	4,750	² 1,493.7	5,570	² 1,724.5
1–4 years					930	73.9	1,120	88.2
5–14 years					1,170	39.1	1,220	41.4
15–24 years					700	301.8	770	334.5
25–34 years	970	447.3	990	452.5	11,000	429.4	10,670	413.7
35–44 years	1,650	794.8	1,510	744.2	18,170	749.3	17,810	755.3
45–54 years	1,610	1,256.3	1,620	1,333.9	18,340	1,243.4	17,350	1,237.5
55–64 years	2,270	2,875.6	1,960	2,519.4	22,310	2,409.3	22,440	2,460.5
65–74 years	2,660	4,632.0	3,270	5,763.7	30,540	4,531.2	31,470	4,725.2
75–84 years	2,660	10,263.1	2,400	9,482.6	26,590	8,804.6	25,990	8,721.5
85 years and over	1,370	19,968.9	1,330	19,822.4	13,540	17,139.2	12,600	17,260.3
Not stated	–	...	–	...	100	...	120	...
Age-adjusted rate ³	1,109.6	...	1,129.4	...	1,012.6	...	1,033.8

See footnotes at end of table.

Table 5. Provisional number of deaths and death rates, by age, race, and sex, and age-adjusted death rates by race and sex: United States, January 1995 and 1996 and 12 months ending with January 1995 and 1996—Con.

[Data are provisional, estimated from a 10-percent sample of deaths. Age-specific rates on an annual basis per 100,000 population in specified group; age-adjusted rates per 100,000 U.S. standard million population; see [Technical notes](#). Because of rounding of estimates, figures may not add to totals. For method of computation and information on standard errors of the estimates, see [Technical notes](#)]

Age, race, and sex	January				12 months ending with January							
	1996		1995		1996		1995					
	Number	Rate	Number	Rate	Number	Rate	Number	Rate				
Black female												
All ages	12,310	828.3	13,280	903.2	131,910	755.9	129,760	754.6				
Under 1 year	} 560	148.5	560	149.2	4,220	² 1,370.1	4,160	² 1,320.6				
1–4 years					870	71.1	990	80.1				
5–14 years					650	22.4	790	27.6				
15–24 years					90	*	140	60.7	1,700	62.3	1,800	66.6
25–34 years					520	215.6	500	205.0	4,850	169.8	4,590	159.9
35–44 years	850	358.3	980	422.2	8,970	323.6	8,960	332.6				
45–54 years	870	562.5	1,080	736.7	10,970	616.3	10,720	634.3				
55–64 years	1,490	1,451.4	1,770	1,746.9	16,690	1,385.1	16,160	1,368.3				
65–74 years	2,360	2,939.2	2,740	3,435.7	26,140	2,769.1	26,580	2,827.7				
75–84 years	2,870	6,381.3	2,960	6,651.1	31,010	5,873.1	30,130	5,695.7				
85 years and over	2,690	15,959.5	2,530	15,434.6	25,730	13,127.6	24,800	14,090.9				
Not stated	20	...	10	...	110	...	70	...				
Age-adjusted rate ³	605.6	...	688.4	...	569.2	...	573.6				

... Category not applicable.

* Figure does not meet standards of reliability or precision; see [Technical notes](#).

– Quantity zero.

¹Includes races other than white and black.

²Death rates for "Under 1 year" (based on population estimates) differ from infant mortality rates (based on live births); see [table 9](#) for infant mortality rates.

³ For method of computation, see [Technical notes](#).

NOTES: Figures include all revisions received from the States. Twelve-month figures for the current year reflect revisions received for previous months, and figures for earlier years may differ from those previously published.

Table 6. Provisional number of deaths and death rates for 72 selected causes, Human immunodeficiency virus infection, and Alzheimer's disease: United States, January 1995 and 1996 and 12 months ending with January 1995 and 1996

[Data are provisional, estimated from a 10-percent sample of deaths. Rates on an annual basis per 100,000 estimated population. Because of rounding of estimates, figures may not add to totals. For method of computation and information on standard errors of the estimates, see [Technical notes](#). For explanation of asterisks preceding cause-of-death categories, see [Technical notes](#)]

Cause of death (Based on the Ninth Revision, International Classification of Diseases, 1975)	January				12 months ending with January			
	1996		1995		1996		1995	
	Number	Rate	Number	Rate	Number	Rate	Number	Rate
All causes	221,000	989.9	220,000	988.7	2,311,000	878.5	2,281,000	874.4
Shigellosis and amebiasis004,006	-	*	-	*	-	*	10	*
Certain other intestinal infections.007-009	110	0.5	40	*	700	0.3	720	0.3
Tuberculosis010-018	100	*	170	0.8	1,290	0.5	1,510	0.6
Tuberculosis of respiratory system010-012	90	*	120	0.5	1,040	0.4	1,120	0.4
Other tuberculosis013-018	10	*	50	*	260	0.1	390	0.1
Whooping cough.033	-	*	-	*	10	*	20	*
Streptococcal sore throat, scarlatina, and erysipelas.034-035	-	*	-	*	10	*	-	*
Meningococcal infection036	40	*	20	*	320	0.1	300	0.1
Septicemia038	2,280	10.2	2,160	9.7	21,310	8.1	19,800	7.6
Acute poliomyelitis.045	-	*	-	*	-	*	-	*
Measles055	-	*	-	*	-	*	10	*
Viral hepatitis.070	300	1.3	330	1.5	3,490	1.3	2,940	1.1
Syphilis090-097	-	*	20	*	110	0.0	110	0.0
All other infectious and parasitic diseases ¹001-003,005,020-032,037,039-041,*042-*044,046-054,056-066,071-088,098-139	4,160	18.6	4,590	20.7	48,570	18.5	47,670	18.3
Malignant neoplasms, including neoplasms of lymphatic and hematopoietic tissues140-208	48,430	216.6	49,350	222.1	535,520	203.6	541,030	207.4
Malignant neoplasms of lip, oral cavity, and pharynx140-149	700	3.1	790	3.5	7,890	3.0	7,900	3.0
Malignant neoplasms of digestive organs and peritoneum150-159	11,480	51.3	11,260	50.7	125,480	47.7	127,230	48.8
Malignant neoplasms of respiratory and intrathoracic organs160-165	14,020	62.7	14,280	64.3	154,670	58.8	154,540	59.2
Malignant neoplasm of breast174-175	3,820	17.1	4,670	21.0	43,160	16.4	44,990	17.2
Malignant neoplasms of genital organs179-187	5,170	23.1	5,440	24.5	60,530	23.0	62,300	23.9
Malignant neoplasms of urinary organs188-189	2,290	10.2	2,190	9.9	23,190	8.8	22,040	8.4
Malignant neoplasms of all other and unspecified sites170-173,190-199	5,820	26.0	5,780	26.0	65,630	25.0	67,610	25.9
Leukemia.204-208	1,870	8.4	1,790	8.1	19,710	7.5	19,910	7.6
Other malignant neoplasms of lymphatic and hematopoietic tissues.200-203	3,260	14.6	3,170	14.3	35,250	13.4	34,510	13.2
Benign neoplasms, carcinoma in situ, and neoplasms of uncertain behavior and of unspecified nature210-239	720	3.2	830	3.7	8,280	3.1	7,730	3.0
Diabetes mellitus250	5,700	25.5	5,740	25.8	58,290	22.2	55,320	21.2
Nutritional deficiencies260-269	410	1.8	290	1.3	3,950	1.5	3,080	1.2
Anemias280-285	240	1.1	420	1.9	4,110	1.6	4,210	1.6
Meningitis320-322	70	*	150	0.7	700	0.3	970	0.4
Major cardiovascular diseases390-448	91,780	410.4	90,930	409.2	943,370	358.7	934,310	358.1
Diseases of heart390-398,402,404-429	71,560	320.0	70,240	316.1	732,190	278.4	726,700	278.5
Rheumatic fever and rheumatic heart disease.390-398	390	1.7	560	2.5	4,860	1.8	5,520	2.1
Hypertensive heart disease402	2,370	10.6	2,300	10.3	24,560	9.3	23,850	9.1
Hypertensive heart and renal disease404	240	1.1	280	1.3	2,300	0.9	2,330	0.9
Ischemic heart disease410-414	46,380	207.4	46,070	207.3	477,710	181.6	479,340	183.7
Acute myocardial infarction410	21,560	96.4	21,720	97.7	217,020	82.5	223,610	85.7
Other acute and subacute forms of ischemic heart disease411	230	1.0	320	1.4	2,500	1.0	2,660	1.0
Angina pectoris413	70	*	100	*	700	0.3	880	0.3
Old myocardial infarction and other forms of chronic ischemic heart disease412,414	24,520	109.6	23,930	107.7	257,490	97.9	252,190	96.7
Other diseases of endocardium424	1,460	6.5	1,470	6.6	15,520	5.9	14,560	5.6
All other forms of heart disease.415-423,425-429	20,720	92.6	19,550	88.0	207,240	78.8	201,110	77.1
Hypertension with or without renal disease401,403	1,160	5.2	1,240	5.6	12,400	4.7	10,820	4.1
Cerebrovascular diseases430-438	15,170	67.8	15,150	68.2	156,780	59.6	153,610	58.9
Intracerebral and other intracranial hemorrhage.431-432	2,140	9.6	2,330	10.5	21,510	8.2	21,620	8.3
Cerebral thrombosis and unspecified occlusion of cerebral arteries.434,0,434.9	1,260	5.6	1,350	6.1	13,320	5.1	14,830	5.7
Cerebral embolism434.1	70	*	50	*	660	0.3	910	0.3
All other and late effects of cerebrovascular diseases430,433,435-438	11,700	52.3	11,420	51.4	121,290	46.1	116,250	44.6

See footnotes at end of table.

Table 6. Provisional number of deaths and death rates for 72 selected causes, Human immunodeficiency virus infection, and Alzheimer's disease: United States, January 1995 and 1996 and 12 months ending with January 1995 and 1996—Con.

[Data are provisional, estimated from a 10-percent sample of deaths. Rates on an annual basis per 100,000 estimated population. Because of rounding of estimates, figures may not add to totals. For method of computation and information on standard errors of the estimates, see [Technical notes](#). For explanation of asterisks preceding cause-of-death categories, see [Technical notes](#)]

Cause of death (Based on the Ninth Revision, International Classification of Diseases, 1975)	January				12 months ending with January				
	1996		1995		1996		1995		
	Number	Rate	Number	Rate	Number	Rate	Number	Rate	
Atherosclerosis	440	1,470	6.6	1,640	7.4	16,220	6.2	16,930	6.5
Other diseases of arteries, arterioles, and capillaries	441-448	2,420	10.8	2,670	12.0	25,760	9.8	26,240	10.1
Acute bronchitis and bronchiolitis	466	60	*	40	*	560	0.2	430	0.2
Pneumonia and influenza	480-487	9,710	43.4	8,470	38.1	81,410	31.0	78,420	30.1
Pneumonia	480-486	9,490	42.4	8,400	37.8	80,780	30.7	77,850	29.8
Influenza	487	220	1.0	70	*	620	0.2	560	0.2
Chronic obstructive pulmonary diseases and allied conditions	490-496	10,930	48.9	10,930	49.2	103,550	39.4	100,210	38.4
Bronchitis, chronic and unspecified	490-491	470	2.1	310	1.4	3,130	1.2	3,360	1.3
Emphysema	492	1,770	7.9	2,000	9.0	17,190	6.5	17,450	6.7
Asthma	493	480	2.1	570	2.6	5,420	2.1	5,120	2.0
Other chronic obstructive pulmonary diseases and allied conditions	494-496	8,220	36.8	8,050	36.2	77,810	29.6	74,270	28.5
Ulcer of stomach and duodenum	531-533	560	2.5	490	2.2	5,960	2.3	5,930	2.3
Appendicitis	540-543	30	*	50	*	380	0.1	360	0.1
Hernia of abdominal cavity and intestinal obstruction without mention of hernia	550-553,560	630	2.8	580	2.6	6,010	2.3	5,990	2.3
Chronic liver disease and cirrhosis	571	2,210	9.9	2,300	10.3	25,000	9.5	25,880	9.9
Cholelithiasis and other disorders of gallbladder	574-575	210	0.9	330	1.5	2,580	1.0	2,750	1.1
Nephritis and nephrotic syndrome, and nephrosis	580-589	2,670	11.9	2,520	11.3	25,770	9.8	24,750	9.5
Acute glomerulonephritis and nephrotic syndrome	580-581	10	*	30	*	260	0.1	230	0.1
Chronic glomerulonephritis, nephritis and nephropathy, not specified as acute or chronic, and renal sclerosis, unspecified	582-583,587	180	0.8	220	1.0	1,290	0.5	1,680	0.6
Renal failure, disorders resulting from impaired renal function, and small kidney of unknown cause	584-586,588-589	2,480	11.1	2,270	10.2	24,220	9.2	22,840	8.8
Infections of kidney	590	100	*	70	*	760	0.3	990	0.4
Hyperplasia of prostate	600	70	*	10	*	490	0.2	380	0.1
Complications of pregnancy, childbirth, and the puerperium	630-676	30	*	30	*	320	0.1	340	0.1
Pregnancy with abortive outcome	630-638	-	*	-	*	20	*	40	*
Other complications of pregnancy, childbirth, and the puerperium	640-676	30	*	30	*	300	0.1	300	0.1
Congenital anomalies	740-759	840	3.8	1,060	4.8	11,320	4.3	11,700	4.5
Certain conditions originating in the perinatal period	760-779	1,110	5.0	1,180	5.3	13,330	5.1	14,360	5.5
Birth trauma, intrauterine hypoxia, birth asphyxia, and respiratory distress syndrome	767-769	190	0.8	200	0.9	1,970	0.7	2,380	0.9
Other conditions originating in the perinatal period	760-766,770-779	920	4.1	980	4.4	11,360	4.3	11,980	4.6
Symptoms, signs, and ill-defined conditions	780-799	4,280	19.1	3,910	17.6	42,600	16.2	39,920	15.3
All other diseases	Residual	21,360	95.5	20,290	91.3	214,520	81.6	203,570	78.0
Accidents and adverse effects	E800-E949	7,510	33.6	7,500	33.7	89,810	34.1	89,080	34.1
Motor vehicle accidents	E810-E825	3,380	15.1	3,610	16.2	43,550	16.6	42,910	16.4
All other accidents and adverse effects	E800-E807,E826-E949	4,130	18.5	3,900	17.5	46,250	17.6	46,170	17.7
Suicide	E950-E959	2,440	10.9	2,580	11.6	29,680	11.3	30,800	11.8
Homicide and legal intervention	E960-E978	2,130	9.5	2,080	9.3	22,420	8.5	23,880	9.2
All other external causes	E980-E999	170	0.8	210	0.9	2,230	0.8	2,550	1.0
Human immunodeficiency virus infection ²	*042-*044	3,680	16.4	3,960	17.8	42,090	16.0	41,110	15.8
Alzheimer's disease	331.0	2,400	10.7	2,020	9.1	20,850	7.9	18,680	7.2

- Quantity zero.

* Figure does not meet standards of reliability or precision; see [Technical notes](#).

¹Includes data for deaths due to Human immunodeficiency virus infection (categories *042-*044) shown separately below; see [Technical notes](#).

²Included in "All other infectious and parasitic diseases" shown above.

NOTES: Figures include all revisions received from the States. Twelve-month figures for the current year reflect revisions received for previous months, and figures for earlier years may differ from those previously published.

Table 7. Provisional number of deaths and death rates for 16 selected subcategories of Malignant neoplasms, including neoplasms of lymphatic and hematopoietic tissues: United States, January 1995 and 1996 and 12 months ending with January 1995 and 1996

[Data are provisional, estimated from a 10-percent sample of deaths. Rates on an annual basis per 100,000 estimated population. Because of rounding of estimates, figures may not add to totals. For method of computation and information on standard errors of the estimates, see [Technical notes](#)]

Cause of death (Based on the Ninth Revision, International Classification of Diseases, 1975)	January				12 months ending with January			
	1996		1995		1996		1995	
	Number	Rate	Number	Rate	Number	Rate	Number	Rate
Malignant neoplasms, including neoplasms of lymphatic and hematopoietic tissues ¹140-208	48,430	216.6	49,350	222.1	535,520	203.6	541,030	207.4
Malignant neoplasm of esophagus150	1,040	4.6	990	4.5	10,410	4.0	11,170	4.3
Malignant neoplasm of stomach151	1,210	5.4	1,280	5.8	13,750	5.2	13,820	5.3
Malignant neoplasms of colon, rectum, rectosigmoid junction, and anus153,154	5,190	23.2	5,030	22.6	56,000	21.3	58,600	22.5
Malignant neoplasm of pancreas157	2,210	9.9	2,420	10.9	27,170	10.3	26,770	10.3
Malignant neoplasms of trachea, bronchus, and lung162	13,610	60.9	13,670	61.5	149,600	56.9	149,160	57.2
Malignant melanoma of skin172	440	2.0	670	3.0	6,790	2.6	7,330	2.8
Malignant neoplasm of cervix uteri180	290	1.3	290	1.3	4,770	1.8	4,550	1.7
Malignant neoplasms of body of uterus and of uterus, part unspecified179,182	420	1.9	520	2.3	6,010	2.3	5,880	2.3
Malignant neoplasm of ovary183.0	1,360	6.1	1,170	5.3	13,780	5.2	13,880	5.3
Malignant neoplasm of prostate185	2,890	12.9	3,270	14.7	34,170	13.0	36,000	13.8
Malignant neoplasm of bladder188	1,160	5.2	1,140	5.1	11,560	4.4	10,730	4.1
Malignant neoplasms of kidney and other and unspecified urinary organs189	1,120	5.0	1,040	4.7	11,630	4.4	11,310	4.3
Malignant neoplasms of brain and other and unspecified parts of nervous system191,192	1,000	4.5	910	4.1	11,630	4.4	12,020	4.6
Hodgkin's disease201	210	0.9	100	*	1,640	0.6	1,470	0.6
Malignant lymphoma other than Hodgkin's disease200,202	2,070	9.3	2,070	9.3	23,260	8.8	22,670	8.7
Multiple myeloma and other immunoproliferative neoplasms203	980	4.4	990	4.5	10,360	3.9	10,370	4.0

* Figure does not meet standards of reliability or precision; see [Technical notes](#).

¹Includes figures for subcategories not shown below.

NOTES: Figures include all revisions received from the States. Twelve-month figures for the current year reflect revisions received for previous months, and figures for earlier years may differ from those previously published.

Table 8. Provisional number of deaths and death rates for firearm mortality: United States, January 1995 and 1996 and 12 months ending with January 1995 and 1996

[Data are provisional, estimated from a 10-percent sample of deaths. Rates on an annual basis per 100,000 estimated population. Because of rounding of estimates, figures may not add to totals. For method of computation and information on standard errors of the estimates, see [Technical notes](#)]

Cause of death (Based on the Ninth Revision, International Classification of Diseases, 1975)	January				12 months ending with January			
	1996		1995		1996		1995	
	Number	Rate	Number	Rate	Number	Rate	Number	Rate
Injury by firearms.E922,E955.0-E955.4,E965.0-965.4,E970,E985.0-E985.4	3,350	15.0	3,280	14.8	35,620	13.5	38,690	14.8
Accident caused by firearm missileE922	160	0.7	140	0.6	1,380	0.5	1,590	0.6
Suicide by firearmsE955.0-E955.4	1,620	7.2	1,530	6.9	18,070	6.9	19,370	7.4
Homicide and legal intervention by firearms.E965.0-E965.4,E970	1,560	7.0	1,570	7.1	15,940	6.1	17,410	6.7
Injury by firearms, undetermined whether accidentally or purposely inflicted.E985.0-E985.4	10	*	30	*	230	0.1	320	0.1

* Figure does not meet standards of reliability or precision; see [Technical notes](#).

NOTES: Figures include all revisions received from the States. Twelve-month figures for the current year reflect revisions received for previous months, and figures for earlier years may differ from those previously published.

Table 9. Provisional number of deaths under 1 year and infant mortality rates, by age and for 10 selected causes: United States, January 1995 and 1996 and 12 months ending with January 1995 and 1996

[Data are provisional, estimated from a 10-percent sample of deaths. Rates on an annual basis per 100,000 live births. Because of rounding of estimates, figures may not add to totals. For method of computation and information on standard errors of the estimates, see [Technical notes](#)]

<i>Age and cause of death (Based on the Ninth Revision, International Classification of Diseases, 1975)</i>	<i>January</i>				<i>12 months ending with January</i>			
	<i>1996</i>		<i>1995</i>		<i>1996</i>		<i>1995</i>	
	<i>Number</i>	<i>Rate</i>	<i>Number</i>	<i>Rate</i>	<i>Number</i>	<i>Rate</i>	<i>Number</i>	<i>Rate</i>
Total, under 1 year	2,400	751.4	2,700	794.1	29,000	753.6	31,600	797.0
Under 28 days	1,400	437.0	1,700	498.7	18,370	477.5	19,930	502.6
28 days–11 months	1,000	312.2	1,000	293.4	10,580	275.0	11,660	294.1
Certain gastrointestinal diseases.008–009,535,555–558	–	*	20	*	170	4.4	260	6.6
Pneumonia and influenza.480–487	20	*	40	*	340	8.8	440	11.1
Congenital anomalies740–759	440	137.4	610	178.9	6,000	156.0	6,870	173.3
Disorders relating to short gestation and unspecified low birthweight765	210	65.6	400	117.3	3,370	87.6	3,930	99.1
Birth trauma767	20	*	10	*	200	5.2	200	5.0
Intrauterine hypoxia and birth asphyxia768	70	*	80	*	470	12.2	570	14.4
Respiratory distress syndrome.769	100	*	100	*	1,220	31.7	1,560	39.3
Other conditions originating in the perinatal period.760–764,766,770–779	690	215.4	580	170.1	7,860	204.3	7,870	198.5
Sudden infant death syndrome798.0	310	96.8	300	88.0	2,920	75.9	3,450	87.0
All other causesResidual	540	168.6	570	167.2	6,410	166.6	6,450	162.7

– Quantity zero.

* Figure does not meet standards of reliability or precision; see [Technical notes](#).

NOTES: Figures include all revisions received from the States. Twelve-month figures for the current year reflect revisions received for previous months, and figures for earlier years may differ from those previously published.

Technical notes

Nature and sources of data

Data in this report are provisional unless otherwise specified and include only events occurring within the United States (50 States and the District of Columbia). Mortality data exclude fetal deaths. Data for the Commonwealth of Puerto Rico are not included in the U.S. totals.

Birth, death, and infant death figures in tables 2 and 4 for each State are estimates by State of residence. These estimates are derived by applying adjustment ratios to the actual counts of certificates for all events occurring in the State and received in registration offices during a 1-month period regardless of date of the event. The adjustment ratios for each data year represent the observed relationship between final State occurrence and residence figures for the three most recent years for which final data were available and are expressed as a single ratio for each State. As in previous years, monthly State marriage and divorce figures represent the actual count of all events occurring in the State (State of occurrence) that were received in the registration offices during the 1-month period. Delay in the receipt of certificates in a registration office may result in a low State figure for a given month followed by a high figure for the month(s) in which the delayed records are received. Data for previous months and cumulative data include revised figures received from the States.

Figures for births, deaths, and infant deaths for California in tables 2 and 4 contain adjustments for varying lengths of State reporting periods. Figures for Texas for all events shown in tables 2–4 also are adjusted for varying lengths of State reporting periods. The figures for both States are adjusted by the ratio between the number of days in the data month and the number of days in the State reporting period. The adjusted figures are included in the U.S. totals shown elsewhere in this report.

U.S. totals for births, deaths, and infant deaths are based on the State estimates by State of residence and, therefore, in effect, exclude events to nonresidents of the United States. Events to nonresidents of the United States are

included in all marriage and divorce figures. The effect of excluding events to nonresidents from the U.S. totals is small.

Provisional totals for the United States include estimates for State data shown as not available. Provisional totals for births and marriages for the entire United States include adjustments for observed differences between provisional and final monthly figures.

Divorce figures include reported annulments. The monthly national divorce estimate is obtained by multiplying the total for the reporting areas by the ratio observed between the most recent final annual divorce total for the United States and the provisional total for the reporting areas combined.

Random variation—Although the counts in this report are not subject to sampling variability (except the Current Mortality Sample), they may be affected by random variation. When the number of events is small and the probability of such an event is small, considerable caution must be observed in interpreting the data. Such infrequent events may be assumed to follow a Poisson probability distribution. For this distribution a simple approximation may be used to estimate the random variation as follows:

If N is the number of events in the population and R is the corresponding rate, the chances are 19 in 20 that

$$1. N - 2\sqrt{N} \text{ and } N + 2\sqrt{N}$$

covers the “true” number of events.

$$2. R - 2 \frac{R}{\sqrt{N}} \text{ and } R + 2 \frac{R}{\sqrt{N}}$$

covers the “true” rate.

If the rate R_1 corresponding to N_1 events is compared with the rate R_2 corresponding to N_2 events, the difference between the two rates may be regarded as statistically significant at the 0.05 level if it exceeds

$$2 \sqrt{\frac{R_1^2}{N_1} + \frac{R_2^2}{N_2}}$$

Additional information on random variation in numbers of events, rates, and ratios may be found in the technical appendixes of *Vital Statistics of the United States, 1990, Volumes I and II*.

Rates

Rates are on an annual basis and, except for infant mortality rates, are per 1,000 or 100,000 estimated population residing in the United States. The populations used for computing these rates are furnished by the U.S. Bureau of the Census. Rates shown in this report beginning with 1992 were computed using populations based on the 1990 Census enumeration comparable to those used for final data. Monthly rates are based on populations estimated for the specific month. Year-to-date rates are averages of monthly rates that have been weighted by the number of days in the corresponding months. Rates for 12-month periods are the sum of events for the period per population estimated at the midpoint of the period.

Infant mortality rates are deaths under 1 year of age for the specified period (monthly, year-to-date, or 12-month period) per 1,000 or 100,000 live births. Births used for computing monthly and year-to-date infant mortality rates are adjusted for monthly variation in the number of births. Births used to compute 12-month rates do not contain this adjustment. Births used for computing infant mortality rates are not corrected for observed differences between provisional and final monthly figures as described earlier in “Nature and sources of data.” Because monthly infant mortality rates are based on relatively few events, they are highly variable. Therefore, comparisons of monthly infant mortality rates should be interpreted cautiously; see “Random variation.”

Age-adjusted death rates are used to compare relative mortality risks across groups and over time. However, they should be viewed as constructs or indexes rather than as direct or actual measures of mortality risk. Statistically, they are weighted averages of the age-specific death rates, where the weights represent the fixed population proportions by age. See chapter 5 of an earlier report (1). The age-adjusted death rates presented in this report were computed by the direct method, that is, by applying age-specific death rates to the U.S. standard million population (2). See also chapter 10 of an earlier report (1). Age groups in table 5 were used to compute the age-adjusted

rates shown in that table. It is important not to compare age-adjusted rates with crude rates.

Current Mortality Sample

The Current Mortality Sample (CMS) is a 10-percent systematic sample of death certificates drawn each month after the certificates are counted in the State registration offices. Deaths and death rates for the United States by age, race, sex, and cause are estimated based on the sample. Because of the additional time required to select and process the certificates, data based on the CMS are published 1 month after publication of the U.S. and State counts. Complete information concerning the underlying cause of death sometimes is not available when the sample is drawn. As a result estimates based on sample counts for certain causes are biased. Correction for bias is not made in this report.

Estimated numbers of deaths based on the sample were proportionately adjusted to be consistent with estimates based on the count of death certificates received in State registration offices.

HIV infection—Beginning with data for 1987, the National Center for Health Statistics introduced categories *042–*044 for classifying and coding Human immunodeficiency virus (HIV) infection. The asterisks before the categories indicate that these codes are not part of the

Ninth Revision, International Classification of Diseases. Deaths classified to these categories are included in All other infectious and parasitic diseases in the List of 72 Selected Causes of Death and are also shown separately at the bottom of table 6.

Sampling variability—Because the estimates of deaths and death rates presented in this report with the exception of total deaths and deaths under 1 year are based on a sample of death certificates, they are subject to sampling variability. The estimated relative standard error in the following table is a measure of the

Relative standard errors for estimated numbers of deaths from the Current Mortality Sample expressed as a percent of the estimate

Estimated number of deaths	Relative standard error of estimate (as percent)	
	170,000 estimated deaths each month	2,000,000 estimated deaths each year
10	94.9	94.9
20	67.1	67.1
50	42.4	42.4
100	30.0	30.0
200	21.2	21.2
500	13.4	13.4
1,000	9.5	9.5
2,000	6.7	6.7
5,000	4.2	4.2
10,000	2.9	3.0
20,000	2.0	2.1
50,000	1.1	1.3
100,000	0.6	0.9
200,000	0.6
500,000	0.4
1,000,000	0.2

sampling error of the estimated number of deaths (or of the estimated death rate) expressed as a percent of the estimate. The first column refers to monthly estimates; the second to annual; cumulative year-to-date totals fall between the two.

The chances are about 2 in 3 that the percent difference between an estimate and the result of a complete count is less than the percent shown. The chances are about 19 in 20 that the percent difference is less than twice the percent shown. A figure based on 100 or fewer estimated deaths has a relative standard error of 30 percent or more and is, therefore, considered unreliable. A rate based on 100 or fewer estimated deaths has been replaced by an asterisk.

Unless otherwise specified comparisons made in the text between death rates based on the CMS were statistically significant at the 0.05 level of significance. Lack of comment in the text about any two rates does not mean that the difference was tested and found not to be significant at this level.

References

1. Feinleib M, Zarate AO, eds. Reconsidering age adjustment procedures: Workshop proceedings. National Center for Health Statistics. Vital Health Stat 4(29). 1992.
2. Grove RD, Hetzel AM. Vital statistics rates in the United States, 1940–1960. Public Health Service. Washington: National Center for Health Statistics. 1968.

Suggested citation

National Center for Health Statistics. Births, marriages, divorces, and deaths for February 1996. Monthly vital statistics report; vol 45 no 2. Hyattsville, Maryland: Public Health Service. 1996.

Copyright information

All material appearing in this report is in the public domain and may be reproduced or copied without permission; citation as to source, however, is appreciated.

National Center for Health Statistics

Director
Edward J. Sondik, Ph.D.

Deputy Director
Jack R. Anderson

Division of Vital Statistics

Director
Mary Anne Freedman

**DEPARTMENT OF
HEALTH & HUMAN SERVICES**

Public Health Service
Centers for Disease Control and Prevention
National Center for Health Statistics
6525 Belcrest Road
Hyattsville, Maryland 20782

FIRST CLASS MAIL
POSTAGE & FEES PAID
PHS/NCHS
PERMIT NO. G-281

**OFFICIAL BUSINESS
PENALTY FOR PRIVATE USE, \$300**

To receive this publication regularly, contact the National Center for Health Statistics by calling 301-436-8500
E-mail: nchsquery@nch10a.em.cdc.gov
Internet: <http://www.cdc.gov/nchswww/nchshome.htm>

DHHS Publication No. (PHS) 96-1120
6-0611 (9/96)