

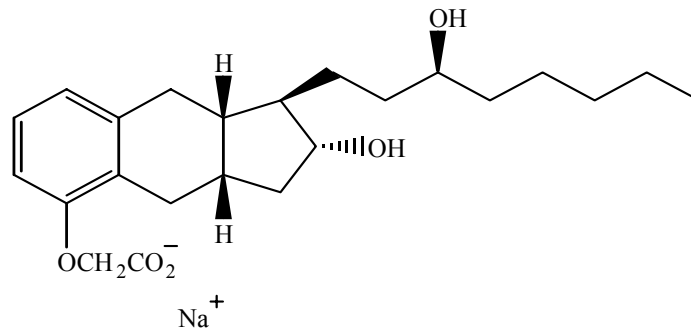
PRODUCT INFORMATION**REMODULIN® (Treprostilil sodium) Injection****DESCRIPTION**

Remodulin® (treprostilil sodium) Injection is a sterile sodium salt formulated for subcutaneous or intravenous administration. Remodulin is supplied in 20 mL multi-use vials in four strengths, containing 1 mg/mL, 2.5 mg/mL, 5 mg/mL or 10 mg/mL of treprostilil. Each mL also contains 5.3 mg sodium chloride (except for the 10 mg/mL strength which contains 4.0 mg sodium chloride), 3.0 mg metacresol, 6.3 mg sodium citrate, and water for injection. Sodium hydroxide and hydrochloric acid may be added to adjust pH between 6.0 and 7.2.

Treprostilil is chemically stable at room temperature and neutral pH.

Treprostilil sodium is (1R,2R,3aS,9aS)-[[2,3,3a,4,9,9a-Hexahydro-2-hydroxy-1-[(3S)-3-hydroxyoctyl]-1H-benz[f]inden-5-yl]oxy]acetic acid monosodium salt. Treprostilil sodium has a molecular weight of 412.49 and a molecular formula of C₂₃H₃₃NaO₅.

The structural formula of treprostilil sodium is:

**CLINICAL PHARMACOLOGY**

General: The major pharmacologic actions of treprostilil are direct vasodilation of pulmonary and systemic arterial vascular beds and inhibition of platelet aggregation. In animals, the vasodilatory effects reduce right and left ventricular afterload and increase cardiac output and stroke volume. Other studies have shown that treprostilil causes a dose-related negative inotropic and lusitropic effect. No major effects on cardiac conduction have been observed.

Pharmacokinetics

The pharmacokinetics of continuous subcutaneous Remodulin are linear over the dose range of 1.25 to 22.5 ng/kg/min (corresponding to plasma concentrations of about 0.03 to 8 mcg/L) and can be described by a two-compartment model. Dose proportionality at infusion rates greater than 22.5 ng/kg/min has not been studied.

Subcutaneous and intravenous administration of Remodulin demonstrated bioequivalence at steady state at a dose of 10 ng/kg/min.

Absorption: Remodulin is relatively rapidly and completely absorbed after subcutaneous infusion, with an absolute bioavailability approximating 100%. Steady-state concentrations occurred in approximately 10 hours. Concentrations in patients treated with an average dose of 9.3 ng/kg/min were approximately 2 mcg/L.

Distribution: The volume of distribution of the drug in the central compartment is approximately 14L/70 kg ideal body weight. Remodulin at *in vitro* concentrations ranging from 330-10,000 mcg/L was 91% bound to human plasma protein.

Metabolism: Remodulin is substantially metabolized by the liver, but the precise enzymes responsible are unknown. Five metabolites have been described (HU1 through HU5). The biological activity and metabolic fate of these metabolites are unknown. The chemical structure of HU1 is unknown. HU5 is the glucuronide conjugate of treprostilil. The other

metabolites are formed by oxidation of the 3-hydroxyoctyl side chain (HU2) and subsequent additional oxidation (HU3) or dehydration (HU4). Based on the results of *in vitro* human hepatic cytochrome P450 studies, Remodulin does not inhibit CYP-1A2, 2C9, 2C19, 2D6, 2E1, or 3A. Whether Remodulin induces these enzymes has not been studied.

Excretion: The elimination of Remodulin is biphasic, with a terminal half-life of approximately 4 hours. Approximately 79% of an administered dose is excreted in the urine as unchanged drug (4%) and as the identified metabolites (64%). Approximately 13% of a dose is excreted in the feces. Systemic clearance is approximately 30 liters/hr for a 70 kg ideal body weight person.

Special Populations

Hepatic Insufficiency: In patients with portopulmonary hypertension and mild (n=4) or moderate (n=5) hepatic insufficiency, Remodulin at a subcutaneous dose of 10 ng/kg/min for 150 minutes had a C_{max} that was increased 2-fold and 4-fold, respectively, and an $AUC_{0-\infty}$ that was increased 3-fold and 5-fold, respectively, compared to healthy subjects. Clearance in patients with hepatic insufficiency was reduced by up to 80% compared to healthy adults.

In patients with mild or moderate hepatic insufficiency, the initial dose of Remodulin should be decreased to 0.625 ng/kg/min ideal body weight and should be increased cautiously. Remodulin has not been studied in patients with severe hepatic insufficiency.

Renal Insufficiency: No studies have been performed in patients with renal insufficiency, so no specific advice about dosing in such patients can be given. Although only 4% of the administered dose is excreted unchanged in the urine, the five identified metabolites are all excreted in the urine.

Effect of Other Drugs on Remodulin: *In vitro* studies: Remodulin did not significantly affect the plasma protein binding of normally observed concentrations of digoxin or warfarin.

In vivo studies: Acetaminophen - Analgesic doses of acetaminophen, 1000 mg every 6 hours for seven doses, did not affect the pharmacokinetics of Remodulin, at a subcutaneous infusion rate of 15 ng/kg/min.

Clinical Trials in Pulmonary Arterial Hypertension (PAH)

Two 12-week, multicenter, randomized, double-blind studies compared continuous subcutaneous infusion of Remodulin to placebo in a total of 470 patients with NYHA Class II-IV pulmonary arterial hypertension (PAH). PAH was primary in 58% of patients, associated with collagen vascular disease in 19%, and the result of congenital left to right shunts in 23%. The mean age was 45 (range 9 to 75 years). About 81% were female and 84% were Caucasian. Pulmonary hypertension had been diagnosed for a mean of 3.8 years. The primary endpoint of the studies was change in 6-minute walking distance, a standard measure of exercise capacity. There were many assessments of symptoms related to heart failure, but local discomfort and pain associated with Remodulin may have substantially unblinded those assessments. The 6-minute walking distance and an associated subjective measurement of shortness of breath during the walk (Borg dyspnea score) were administered by a person not participating in other aspects of the study. Remodulin was administered as a subcutaneous infusion, described in DOSAGE AND ADMINISTRATION, and the dose averaged 9.3 ng/kg/min at Week 12. Few subjects received doses > 40 ng/kg/min. Background therapy, determined by the investigators, could include anticoagulants, oral vasodilators, diuretics, digoxin, and oxygen but not an endothelin receptor antagonist or epoprostenol. The two studies were identical in design and conducted simultaneously, and the results were analyzed both pooled and individually.

Hemodynamic Effects

As shown in Table 1, chronic therapy with Remodulin resulted in small hemodynamic changes consistent with pulmonary and systemic vasodilation.

Table 1: Hemodynamics During Chronic Administration of Remodulin in Patients with PAH

Hemodynamic Parameter	Baseline		Mean change from baseline at Week 12	
	Remodulin (N=204-231)	Placebo (N=215-235)	Remodulin (N=163-199)	Placebo (N=182-215)
CI (L/min/m ²)	2.4 ± 0.88	2.2 ± 0.74	+0.12 ± 0.58*	-0.06 ± 0.55
PAPm (mmHg)	62 ± 17.6	60 ± 14.8	-2.3 ± 7.3*	+0.7 ± 8.5
RAPm (mmHg)	10 ± 5.7	10 ± 5.9	-0.5 ± 5.0*	+1.4 ± 4.8
PVRI (mmHg/L/min/m ²)	26 ± 13	25 ± 13	-3.5 ± 8.2*	+1.2 ± 7.9
SVRI (mmHg/L/min/m ²)	38 ± 15	39 ± 15	-3.5 ± 12*	-0.80 ± 12
SvO ₂ (%)	62 ± 100	60 ± 11	+2.0 ± 10*	-1.4 ± 8.8
SAPm (mmHg)	90 ± 14	91 ± 14	-1.7 ± 12	-1.0 ± 13
HR (bpm)	82 ± 13	82 ± 15	-0.5 ± 11	-0.8 ± 11

*Denotes statistically significant difference between Remodulin and placebo, p<0.05.

CI = cardiac index; PAPm = mean pulmonary arterial pressure; PVRI = pulmonary vascular resistance indexed; RAPm = mean right atrial pressure; SAPm = mean systemic arterial pressure; SVRI = systemic vascular resistance indexed; SvO₂ = mixed venous oxygen saturation; HR = heart rate.

Clinical Effects

The effect of Remodulin on 6-minute walk, the primary end point of the studies, was small and did not achieve conventional levels of statistical significance. For the combined populations, the median change from baseline on Remodulin was 10 meters and the median change from baseline on placebo was 0 meters. Although it was not the primary endpoint of the study, the Borg dyspnea score was significantly improved by Remodulin during the 6-minute walk, and Remodulin also had a significant effect, compared with placebo, on an assessment that combined walking distance with the Borg dyspnea score. Remodulin also consistently improved indices of dyspnea, fatigue and signs and symptoms of pulmonary hypertension, but these indices were difficult to interpret in the context of incomplete blinding to treatment assignment resulting from infusion site symptoms.

INDICATIONS AND USAGE

Remodulin[®] is indicated as a continuous subcutaneous infusion or intravenous infusion (for those not able to tolerate a subcutaneous infusion) for the treatment of pulmonary arterial hypertension in patients with NYHA Class II-IV symptoms (see **CLINICAL PHARMACOLOGY: Clinical Effects**) to diminish symptoms associated with exercise.

CONTRAINDICATIONS

Remodulin is contraindicated in patients with known hypersensitivity to the drug or to structurally related compounds.

WARNINGS

Remodulin is indicated for subcutaneous or intravenous use only.

PRECAUTIONS**General**

Remodulin should be used only by clinicians experienced in the diagnosis and treatment of PAH.

Remodulin is a potent pulmonary and systemic vasodilator. Initiation of Remodulin must be performed in a setting with adequate personnel and equipment for physiological monitoring and emergency care. Therapy with Remodulin may be used for prolonged periods, and the patient's ability to administer Remodulin and care for an infusion system should be carefully considered.

Dose should be increased for lack of improvement in, or worsening of, symptoms and it should be decreased for excessive pharmacologic effects or for unacceptable infusion site symptoms (see **DOSAGE AND ADMINISTRATION**).

Abrupt withdrawal or sudden large reductions in dosage of Remodulin may result in worsening of PAH symptoms and should be avoided.

Information for Patients

Patients receiving Remodulin should be given the following information: Remodulin is infused continuously through a subcutaneous or surgically placed indwelling central venous catheter, via an infusion pump. Therapy with Remodulin will be needed for prolonged periods, possibly years, and the patient's ability to accept and care for a catheter and to use an infusion pump should be carefully considered. In order to reduce the risk of infection, aseptic technique must be used in the preparation and administration of Remodulin. Additionally, patients should be aware that subsequent disease management may require the initiation of an alternative intravenous prostacyclin therapy, Flolan[®] (epoprostenol sodium).

Drug Interactions

Reduction in blood pressure caused by Remodulin may be exacerbated by drugs that by themselves alter blood pressure, such as diuretics, antihypertensive agents, or vasodilators. Since Remodulin inhibits platelet aggregation, there is also a potential for increased risk of bleeding, particularly among patients maintained on anticoagulants. During clinical trials, Remodulin was used concurrently with anticoagulants, diuretics, cardiac glycosides, calcium channel blockers, analgesics, antipyretics, nonsteroidal anti-inflammatories, opioids, corticosteroids, and other medications.

Remodulin has not been studied in conjunction with Flolan or Tracleer[®] (bosentan).

Effect of Other Drugs on Remodulin

In vivo studies: Acetaminophen - Analgesic doses of acetaminophen, 1000 mg every 6 hours for seven doses, did not affect the pharmacokinetics of Remodulin, at a subcutaneous infusion rate of 15 ng/kg/min.

Effect of Remodulin on Other Drugs

In vitro studies: Remodulin did not significantly affect the plasma protein binding of normally observed concentrations of digoxin or warfarin.

In vivo studies: Warfarin - Remodulin does not affect the pharmacokinetics or pharmacodynamics of warfarin. The pharmacokinetics of R- and S- warfarin and the INR in healthy subjects given a single 25 mg dose of warfarin were unaffected by continuous subcutaneous Remodulin at an infusion rate of 10 ng/kg/min.

Hepatic and Renal Impairment

Caution should be used in patients with hepatic or renal impairment (see **Special Populations**).

Carcinogenesis, Mutagenesis, Impairment of Fertility

Long-term studies have not been performed to evaluate the carcinogenic potential of treprostinil. *In vitro* and *in vivo* genetic toxicology studies did not demonstrate any mutagenic or clastogenic effects of treprostinil. Treprostinil sodium did not affect fertility or mating performance of male or female rats given continuous subcutaneous infusions at rates of up to 450 ng treprostinil/kg/min [about 59 times the recommended starting human rate of infusion (1.25 ng/kg/min) and about 8 times the average rate (9.3 ng/kg/min) achieved in clinical trials, on a ng/m² basis]. In this study, males were dosed from 10 weeks prior to mating and through the 2-week mating period. Females were dosed from 2 weeks prior to mating until gestational day 6.

Pregnancy

Pregnancy Category B - In pregnant rats, continuous subcutaneous infusions of treprostinil sodium during organogenesis and late gestational development, at rates as high as 900 ng treprostinil/kg/min (about 117 times the starting human rate of infusion, on a ng/m² basis and about 16 times the average rate achieved in clinical trials), resulted in no evidence of harm to the fetus. In pregnant rabbits, effects of continuous subcutaneous infusions of treprostinil during organogenesis were limited to an increased incidence of fetal skeletal variations (bilateral full rib or right rudimentary rib on lumbar 1) associated with maternal toxicity (reduction in body weight and food consumption) at an infusion rate of 150 ng treprostinil/kg/min (about 41 times the starting human rate of infusion, on a ng/m² basis, and 5 times the average rate used in clinical trials). In rats, continuous subcutaneous infusion of treprostinil from implantation to the end of lactation, at rates of up to 450 ng treprostinil/kg/min, did not affect the growth and development of offspring. Because animal reproduction studies are not always predictive of human response, Remodulin should be used during pregnancy only if clearly needed.

Labor and delivery

No treprostinil sodium treatment-related effects on labor and delivery were seen in animal studies. The effect of treprostinil sodium on labor and delivery in humans is unknown.

Nursing mothers

It is not known whether treprostinil is excreted in human milk or absorbed systemically after ingestion. Because many drugs are excreted in human milk, caution should be exercised when Remodulin is administered to nursing women.

Pediatric use

Safety and effectiveness in pediatric patients have not been established. Clinical studies of Remodulin did not include sufficient numbers of patients aged ≤16 years to determine whether they respond differently from older patients. In general, dose selection should be cautious.

Geriatric use

Clinical studies of Remodulin did not include sufficient numbers of patients aged 65 and over to determine whether they respond differently from younger patients. In general, dose selection for an elderly patient should be cautious, reflecting the greater frequency of decreased hepatic, renal, or cardiac function, and of concomitant disease or other drug therapy.

ADVERSE REACTIONS

Patients receiving Remodulin as a subcutaneous infusion reported a wide range of adverse events, many potentially related to the underlying disease (dyspnea, fatigue, chest pain, right ventricular heart failure, and pallor). During clinical trials with subcutaneous infusion of Remodulin, infusion site pain and reaction were the most common adverse events among those treated with Remodulin. Infusion site reaction was defined as any local adverse event other than pain or bleeding/bruising at the infusion site and included symptoms such as erythema, induration or rash. Infusion site reactions were sometimes severe and could lead to discontinuation of treatment.

Table 2. Percentages of subjects reporting subcutaneous infusion site adverse events

	Reaction		Pain	
	Placebo	Remodulin	Placebo	Remodulin
Severe	1	38	2	39
Requiring narcotics*	NA**	NA**	1	32
Leading to discontinuation	0	3	0	7

* based on prescriptions for narcotics, not actual use

**medications used to treat infusion site pain were not distinguished from those used to treat site reactions

Other adverse events included diarrhea, jaw pain, edema, vasodilatation and nausea, and these are generally considered to be related to the pharmacologic effects of Remodulin, whether administered subcutaneously or intravenously.

Adverse Events During Chronic Dosing

Table 3 lists adverse events that occurred at a rate of at least 3% and were more frequent in patients treated with subcutaneous Remodulin than with placebo in controlled trials in PAH.

Table 3: Adverse Events in Controlled Studies of Patients with PAH, Occurring with at Least 3% Incidence and More Common on Subcutaneous Remodulin than on Placebo.

Adverse Event	Remodulin (N=236) Percent of Patients	Placebo (N=233) Percent of Patients
Infusion Site Pain	85	27
Infusion Site Reaction	83	27
Headache	27	23
Diarrhea	25	16
Nausea	22	18
Rash	14	11
Jaw Pain	13	5
Vasodilatation	11	5
Dizziness	9	8
Edema	9	3
Pruritus	8	6
Hypotension	4	2

Reported adverse events (at least 3%) are included except those too general to be informative, and those not plausibly attributable to the use of the drug, because they were associated with the condition being treated or are very common in the treated population.

Adverse Events Attributable to the Drug Delivery System

In controlled studies of Remodulin administered subcutaneously, there were no reports of infection related to the drug delivery system. There were 187 infusion system complications reported in 28% of patients (23% Remodulin, 33% placebo); 173 (93%) were pump related and 14 (7%) related to the infusion set. Eight of these patients (4 Remodulin, 4 Placebo) reported non-serious adverse events resulting from infusion system complications. Adverse events resulting from problems with the delivery systems were typically related to either symptoms of excess Remodulin (e.g., nausea) or return of PAH symptoms (e.g., dyspnea). These events were generally resolved by correcting the delivery system pump or infusion set problem such as replacing the syringe or battery, reprogramming the pump, straightening a crimped infusion line. Adverse events resulting from problems with the delivery system did not lead to clinical instability or rapid deterioration.

There are no controlled clinical studies with Remodulin administered intravenously. Among the subjects (n=38) treated for 12-weeks in an open-label study, 2 patients had either line infections or sepsis. Other events potentially related to the mode of infusion include arm swelling, paresthesias, hematoma and pain.

OVERDOSAGE

Signs and symptoms of overdose with Remodulin during clinical trials are extensions of its dose-limiting pharmacologic effects and include flushing, headache, hypotension, nausea, vomiting, and diarrhea. Most events were self-limiting and resolved with reduction or withholding of Remodulin.

In controlled clinical trials, seven patients received some level of overdose and in open-label follow-on treatment seven additional patients received an overdose; these occurrences resulted from accidental bolus administration of Remodulin, errors in pump programmed rate of administration, and prescription of an incorrect dose. In only two cases did excess delivery of Remodulin produce an event of substantial hemodynamic concern (hypotension, near-syncope).

DOSAGE AND ADMINISTRATION

Remodulin® is supplied in 20 mL vials in concentrations of 1 mg/mL, 2.5 mg/mL, 5 mg/mL and 10 mg/mL. Remodulin can be administered as supplied or diluted for intravenous infusion with Sterile Water for Injection or 0.9% Sodium Chloride Injection prior to administration.

Initial Dose

Remodulin is administered by continuous infusion. Remodulin is preferably infused subcutaneously, but can be administered by a central intravenous line if the subcutaneous route is not tolerated, because of severe site pain or reaction. The infusion rate is initiated at 1.25 ng/kg/min. If this initial dose cannot be tolerated because of systemic effects, the infusion rate should be reduced to 0.625 ng/kg/min.

Dosage Adjustments

The goal of chronic dosage adjustments is to establish a dose at which PAH symptoms are improved, while minimizing excessive pharmacologic effects of Remodulin (headache, nausea, emesis, restlessness, anxiety and infusion site pain or reaction).

The infusion rate should be increased in increments of no more than 1.25 ng/kg/min per week for the first four weeks and then no more than 2.5 ng/kg/min per week for the remaining duration of infusion, depending on clinical response. There is little experience with doses >40 ng/kg/min. Abrupt cessation of infusion should be avoided (see **PRECAUTIONS**).

Administration

Subcutaneous Infusion

Remodulin is administered subcutaneously by continuous infusion, via a self-inserted subcutaneous catheter, using an infusion pump designed for subcutaneous drug delivery. To avoid potential interruptions in drug delivery, the patient must have immediate access to a backup infusion pump and subcutaneous infusion sets. The ambulatory infusion pump used to administer Remodulin should: (1) be small and lightweight, (2) be adjustable to approximately 0.002 mL/hr, (3) have occlusion/no delivery, low battery, programming error and motor malfunction alarms, (4) have delivery accuracy of ±6% or better and (5) be positive pressure driven. The reservoir should be made of polyvinyl chloride, polypropylene or glass.

For subcutaneous infusion, Remodulin is **delivered without further dilution** at a calculated Subcutaneous Infusion Rate (mL/hr) based on a patient's Dose (ng/kg/min), Weight (kg), and the Vial Strength (mg/mL) of Remodulin being used. During use, a single reservoir (syringe) of undiluted Remodulin can be administered up to 72 hours at 37°C. The Subcutaneous Infusion rate is calculated using the following formula:

$$\text{Subcutaneous Infusion Rate (mL/hr)} = \frac{\text{Dose (ng/kg/min)} \times \text{Weight (kg)} \times 0.00006^*}{\text{Remodulin Vial Strength (mg/mL)}}$$

*Conversion factor of 0.00006 = 60 min/hour x 0.000001 mg/ng

Example calculations for *Subcutaneous Infusion* are as follows:

Example 1:

For a 60 kg person at the recommended initial dose of 1.25 ng/kg/min using the 1 mg/mL Remodulin Vial Strength, the infusion rate would be calculated as follows:

$$\begin{array}{l} \text{Subcutaneous} \\ \text{Infusion Rate} \\ \text{(mL/hr)} \end{array} = \frac{1.25 \text{ ng/kg/min} \quad \times \quad 60 \text{ kg} \quad \times \quad 0.00006}{1 \text{ mg/mL}} = 0.005 \text{ mL/hr}$$

Example 2:

For a 65 kg person at a dose of 40 ng/kg/min using the 5 mg/mL Remodulin Vial Strength, the infusion rate would be calculated as follows:

$$\begin{array}{l} \text{Subcutaneous} \\ \text{Infusion Rate} \\ \text{(mL/hr)} \end{array} = \frac{40 \text{ ng/kg/min} \quad \times \quad 65 \text{ kg} \quad \times \quad 0.00006}{5 \text{ mg/mL}} = 0.031 \text{ mL/hr}$$

Intravenous Infusion

Remodulin must be diluted with either Sterile Water for Injection or 0.9% Sodium Chloride Injection and is administered intravenously by continuous infusion, via a surgically placed indwelling central venous catheter, using an infusion pump designed for intravenous drug delivery. To avoid potential interruptions in drug delivery, the patient must have immediate access to a backup infusion pump and infusion sets. The ambulatory infusion pump used to administer Remodulin should: (1) be small and lightweight, (2) have occlusion/no delivery, low battery, programming error and motor malfunction alarms, (3) have delivery accuracy of $\pm 6\%$ or better of the hourly dose, and (4) be positive pressure driven. The reservoir should be made of polyvinyl chloride, polypropylene or glass.

Diluted Remodulin has been shown to be stable at ambient temperature for up to 48 hours at concentrations as low as 0.004 mg/mL (4,000 ng/mL).

When using an appropriate infusion pump and reservoir, a predetermined intravenous infusion rate should first be selected to allow for a desired infusion period length of up to 48 hours between system changeovers. Typical intravenous infusion system reservoirs have volumes of 50 or 100 mL. With this selected Intravenous Infusion Rate (mL/hr) and the patient's Dose (ng/kg/min) and Weight (kg), the Diluted Intravenous Remodulin Concentration (mg/mL) can be calculated using the following formula:

$$\begin{array}{l} \text{Step 1} \\ \text{Diluted} \\ \text{Intravenous} \\ \text{Remodulin} \\ \text{Concentration} \\ \text{(mg/mL)} \end{array} = \frac{\text{Dose} \quad \times \quad \text{Weight} \quad \times \quad 0.00006}{\text{Intravenous Infusion Rate}} \\ \text{(ng/kg/min)} \quad \text{(kg)} \quad \text{(mL/hr)}$$

The Amount of Remodulin Injection needed to make the required Diluted Intravenous Remodulin Concentration for the given reservoir size can then be calculated using the following formula:

Step 2 Amount of Remodulin Injection (mL)	=	Diluted Intravenous Remodulin Concentration (mg/mL)	x	Total Volume of Diluted Remodulin Solution in Reservoir (mL)
		Remodulin Vial Strength (mg/mL)		

The calculated amount of Remodulin Injection is then added to the reservoir along with the sufficient volume of diluent (Sterile Water for Injection or 0.9% Sodium Chloride Injection) to achieve the desired total volume in the reservoir.

Example calculations for *Intravenous Infusion* are as follows:

Example 3:

For a 60 kg person at a dose of 5 ng/kg/min, with a predetermined intravenous infusion rate of 1 mL/hr and a reservoir of 50 mL, the Diluted Intravenous Remodulin Solution Concentration would be calculated as follows:

$$\begin{array}{l}
 \text{Step 1} \\
 \text{Diluted} \\
 \text{Intravenous} \\
 \text{Remodulin} \\
 \text{Concentration} \\
 \text{(mg/mL)}
 \end{array}
 = \frac{5 \text{ ng/kg/min} \quad \times \quad 60 \text{ kg} \quad \times \quad 0.00006}{1 \text{ mL/hr}} = 0.018 \text{ mg/mL}$$

(18,000 ng/mL)

The Amount of Remodulin Injection (using 1 mg/mL Vial Strength) needed for a total Diluted Remodulin Concentration of 0.018 mg/mL and a total volume of 50 mL would be calculated as follows:

Step 2 Amount of Remodulin Injection (mL)	=	0.018 mg/mL	x 50 mL = 0.9 mL
		1 mg/mL	

The Diluted Intravenous Remodulin Concentration for the person in Example 3 would thus be prepared by adding 0.9 mL of 1 mg/mL Remodulin Injection to a suitable reservoir along with a sufficient volume of diluent to achieve a total volume of 50 mL in the reservoir. The pump flow rate for this example would be set at 1 mL/hr.

Example 4:

For a 75 kg person at a dose of 30 ng/kg/min, with a predetermined intravenous infusion rate of 2 mL/hr, and a reservoir of 100 mL, the Diluted Intravenous Remodulin Solution Concentration would be calculated as follows:

$$\begin{array}{l}
 \text{Step 1} \\
 \text{Diluted} \\
 \text{Intravenous} \\
 \text{Remodulin} \\
 \text{Concentration} \\
 \text{(mg/mL)}
 \end{array}
 = \frac{30 \text{ ng/kg/min} \quad \times \quad 75 \text{ kg} \quad \times \quad \frac{0.00006}{6}}{2 \text{ mL/hr}} = 0.0675 \text{ mg/mL}$$

(67,500 ng/mL)

The Amount of Remodulin Injection (using 2.5 mg/mL Vial Strength) needed for a total Diluted Remodulin Concentration of 0.0675 mg/mL and a total volume of 100 mL would be calculated as follows:

Step 2 Amount of Remodulin Injection (mL)	=	0.0675 mg/mL	x 100 mL = 2.7 mL
		2.5 mg/mL	

The Diluted Intravenous Remodulin Concentration for the person in Example 4 would thus be prepared by adding 2.7 mL of 2.5 mg/mL Remodulin Injection to a suitable reservoir along with a sufficient volume of diluent to achieve a total volume of 100 mL in the reservoir. The pump flow rate for this example would be set at 2 mL/hr.

HOW SUPPLIED

Remodulin® is supplied in 20 mL multi-use vials at concentrations of 1mg/mL, 2.5 mg/mL, 5 mg/mL, and 10 mg/mL treprostiniol, as sterile solutions in water for injection, individually packaged in a carton. Each mL contains treprostiniol sodium equivalent to 1mg/mL, 2.5 mg/mL, 5 mg/mL, or 10 mg/mL treprostiniol. Unopened vials of Remodulin are stable until the date indicated when stored at 15 to 25°C (59 to 77°F). Store at 25°C (77°F), with excursions permitted to 15-30°C (59-86°F) [see USP Controlled Room Temperature].

During use, a single reservoir (syringe) of undiluted Remodulin can be administered up to 72 hours at 37°C. Diluted Remodulin Solution can be administered up to 48 hours at 37°C when diluted to concentrations as low as 0.004 mg/mL in Sterile Water for Injection or 0.9% Sodium Chloride Injection. A single vial of Remodulin should be used for no more than 30 days after the initial introduction into the vial.

Parenteral drug products should be inspected visually for particulate matter and discoloration prior to administration whenever solution and container permit. If either particulate matter or discoloration is noted, Remodulin should not be administered.

20-mL vial containing treprostiniol sodium equivalent to 1 mg treprostiniol per mL, carton of 1 (NDC 66302-101-01).

20-mL vial containing treprostiniol sodium equivalent to 2.5 mg treprostiniol per mL, carton of 1 (NDC 66302-102-01).

20-mL vial containing treprostiniol sodium equivalent to 5 mg treprostiniol per mL, carton of 1 (NDC 66302-105-01).

20-mL vial containing treprostiniol sodium equivalent to 10mg treprostiniol per mL, carton of 1 (NDC 66302-110-01).

US Patent No. 5,153,222 (Use Patent)

United Therapeutics Corp.
 Research Triangle Park, NC 27709

©Copyright 2004 United Therapeutics Corp. All rights reserved.

REMODULIN manufactured by:

Baxter Pharmaceutical Solutions LLC
 Bloomington, IN 47403

NDA 21-272/S-002

Page 13

For United Therapeutics Corp.
Research Triangle Park, NC 27709

Rx only

November 2004