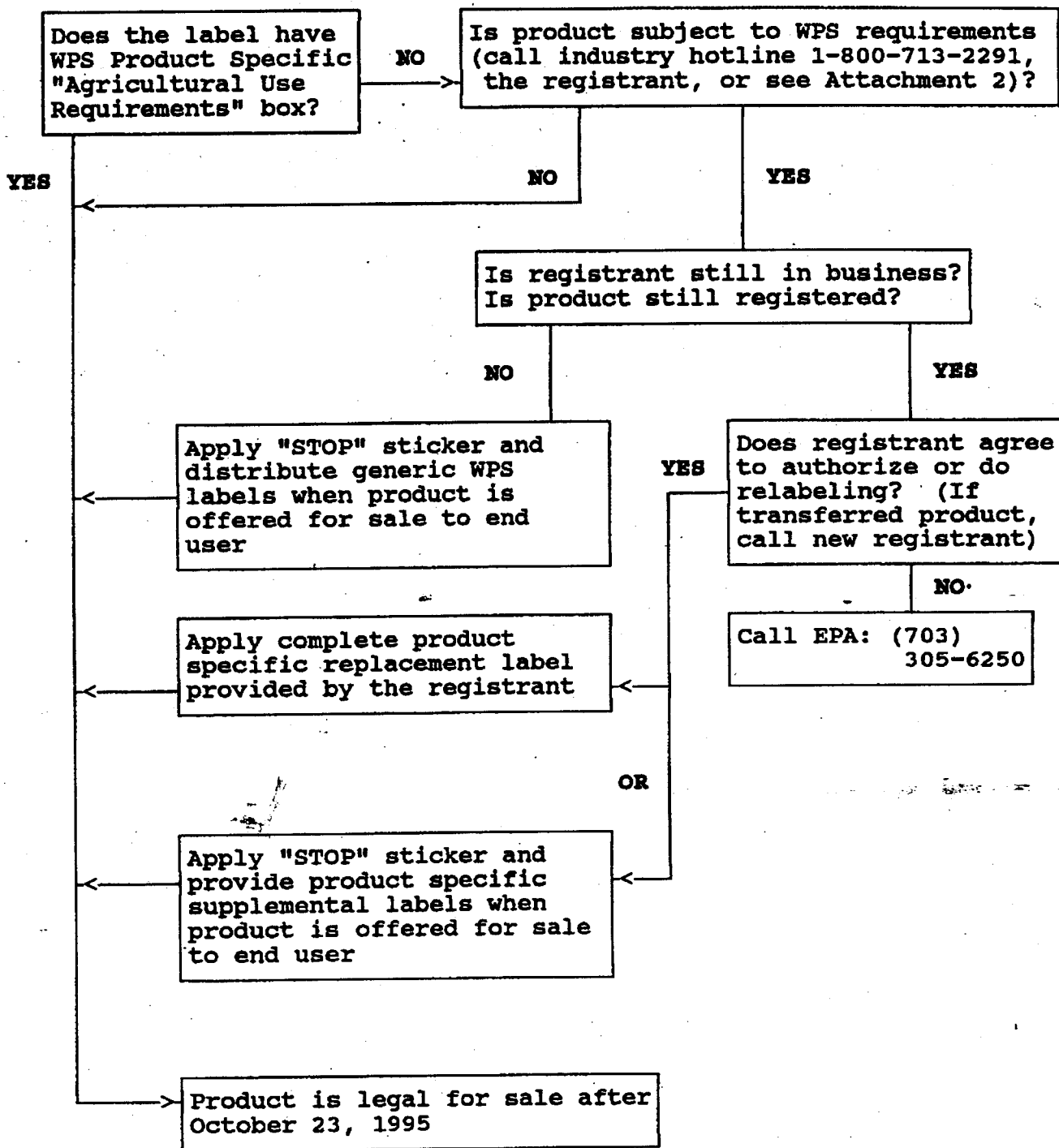


# ATTACHMENT 1

## WPS RELABELING PROCESS FOR RETAILERS AND WHOLESALERS



## ATTACHMENT 2

### Scope Criteria: Determining applicability to individual products

(Excerpt from PRN 93-7)

To determine whether pesticide products (that do not already bear labeling containing WPS requirements in an Agricultural Requirements box) fall within the scope of this notice, answer the questions below for each of them.

**Begin here for each product:**

**A. Does the labeling contain directions for application to**

- ▶ Plants grown to produce food, feed, or fiber?
- ▶ Turfgrass?
- ▶ Ornamental plants, trees, or shrubs?
- ▶ Plants grown to produce seedlings or transplants?
- ▶ Plants grown to produce cut flowers or cut ferns?
- ▶ Trees grown to produce timber?
- ▶ Areas where any such plants are growing?
- ▶ Areas where such plants will soon be grown (i.e., pre-plant or at-plant application)?
- ▶ Areas from which such plants have just been harvested?

If you answered "YES" to any of these questions, this product may be within the scope of this notice. Go on to question B.

If you answered "NO" to all of these questions, this product is NOT within the scope of this notice. Begin again with question A for your next product.

**B. Does the labeling explicitly limit application ONLY to plants intended for aesthetic purposes or climate modification and growing in interior plantscapes, ornamental gardens or parks, or on golf courses or lawns and grounds?**

If you answered "YES", this product is NOT within the scope of this notice. Begin again with question A for the next product.

If you answered "NO", this product may be within the scope of this notice. Go on to question C.

**C. Does the labeling explicitly limit uses ONLY to those NOT directly related to the**

production of food, feed, fiber, timber, turfgrass, or ornamentals, such as the following:

- ▶ Use on pasture or rangeland;
- ▶ Use on rights-of-way or other non-crop areas;
- ▶ Use for structural pest control; or
- ▶ Use for mosquito abatement, Mediterranean fruit fly eradication, or in other wide-area government-sponsored pest control programs?

If you answered "YES" to this question, this product is NOT within the scope of this notice. Begin again with question A for the next product.

If you answered "NO" to this question, this product may be within the scope of this notice. Go on to question D.

D. Does the labeling contain directions only for one or more of the following:

- ▶ Control of vertebrate pests;
- ▶ Use as an attractant in traps;
- ▶ Use on the portions of agricultural plants that have been harvested, including harvested timber; or
- ▶ Application using a point-source pheromone dispenser of a size easily retrieved from the field, such as a "twist-tie"?

If you answered "YES" to this question, this product is NOT within the scope of this notice. Begin again with question A for the next product.

If you answered "NO" to this question, this product may be within the scope of this notice. Go on to question E.

E. Is the product labeled PRIMARILY for use in production of plants in homes, home flower or vegetable gardens, home lawns, or home greenhouses? Answer "yes" to this question only if the current labeling meets ALL the following tests:

1. The labeling indicates that the product is intended for use in or around the home, home flower or vegetable garden, home lawn, or home greenhouse;  
AND
2. The labeling does NOT include any of the following directions or phrases:
  - ▶ Skull and crossbones symbol and word "Poison";
  - ▶ A requirement for users to wear a respirator;
  - ▶ A requirement for users to wear chemical-resistant, waterproof, or liquid-proof suits or coveralls or "rainsuits";
  - ▶ The phrase "for professional use";

- ▶ The phrase "for commercial use";
  - ▶ Directions for use on farms, sod farms, forests, nurseries, or greenhouses except home greenhouses;
  - ▶ Directions for use including the phrases "for crop production" or "for sod production";
  - ▶ Application rates expressed per acre;
  - ▶ Dilution rates expressed per hundred gallons;
  - ▶ Directions for application by aerial, ground-boom, airblast, or other motor-driven vehicles or equipment;
  - ▶ Directions for use of a "surfactant", "buffer", or "adjuvant", using those words;
  - ▶ Any reference to chemigation;
  - ▶ Directions for mechanical agitation;
  - ▶ Instructions or restrictions concerning livestock grazing; AND
3. The product is packaged in a container holding no more than 40 pounds if the product is a solid, or 2 gallons if it is a liquid, or 2 pounds if it is an aerosol.

If all three tests (E. 1, 2, & 3) above are **fully satisfied**, this product is **NOT** within the scope of this notice. Begin again with question A for the next product.

If any of these three tests is not fully satisfied, **THIS PRODUCT IS WITHIN THE SCOPE OF THIS NOTICE.** (If the product does not satisfy all these three tests but you believe it is nonetheless intended primarily for home use or is otherwise limited to use on plants grown for other than commercial or research purposes, check with the registrant. Start again with question A for the next product.

## ATTACHMENT 3

### EXAMPLE OF AGRICULTURAL USE REQUIREMENT BOX

#### AGRICULTURAL USE REQUIREMENTS

Use this product only in accordance with its labeling and with the Worker Protection Standard, 40 CFR 170. This Standard contains requirements for the protection of agricultural workers on farms, forests, nurseries, and greenhouses, and handlers of agricultural pesticides. It contains requirements for training, decontamination, notification, and emergency assistance. It also contains specific instructions and exceptions pertaining to the statements in this labeling about personal protective equipment, restricted-entry intervals, and notification to workers. The requirements in this box only apply to uses of this product that are covered by the Worker Protection Standard (WPS).

Do not enter or allow worker entry into treated areas during the restricted entry interval (REI) of 48 hours.

PPE required for early entry to treated areas that is permitted under the Worker Protection Standard and that involves contact with anything that has been treated, such as plants, soil, or water is:

Coveralls over long-sleeved shirt & long pants  
Chemical-resistant gloves, such as barrier laminate or viton  
Chemical-resistant footwear plus socks  
Protective eyewear  
Chemical-resistant headgear for overhead exposure

Notify workers of the application by warning them orally and by posting warning signs at entrances to treated areas.

## **ATTACHMENT 4**

**Single-Product**

**Product-Specific  
(example)**

### **"SUPPLEMENTAL LABELING WITH WORKER PROTECTION REQUIREMENTS"**

**Product Name, Company Name, EPA Reg. No.**

For compliance with the Worker Protection Standard (40 CFR part 170):

**IMPORTANT: This supplemental labeling does not apply (1) to soil or space fumigant products, (2) to products containing ethyl parathion, or (3) if elsewhere on the product labeling an Agricultural Use Requirements box requires compliance with the Worker Protection Standard (40 CFR Part 170).**

When this product is used on an agricultural establishment (farm, forest, nursery, or greenhouse) for the commercial or research production of agricultural plants, users must comply with the instructions in this supplemental labeling. Users who must comply with these instructions include owners/operators of the agricultural establishment and owners/operators of commercial businesses that are hired to apply pesticides on the agricultural establishment or to perform crop-advising tasks on such establishments. Failure to comply with the requirements on this supplemental labeling and with the Worker Protection Standard (40 CFR part 170) is a violation of Federal law, since it is illegal to use a pesticide product in a manner inconsistent with its labeling.

### AGRICULTURAL USE REQUIREMENTS

Use this product only in accordance with its labeling and with the Worker Protection Standard, 40 CFR 170. This Standard contains requirements for the protection of agricultural workers on farms, forests, nurseries, and greenhouses, and handlers of agricultural pesticides. It contains requirements for training, decontamination, notification, and emergency assistance. It also contains specific instructions and exceptions pertaining to the statements in this labeling about personal protective equipment, restricted-entry intervals, and notification to workers. The requirements in this box only apply to uses of this product that are covered by the Worker Protection Standard (WPS).

Do not apply this product in a way that will contact workers or other persons, either directly or through drift. Only protected handlers may be in the area during application. For any requirements specific to your State or Tribe, consult the agency responsible for pesticide regulation.

**Entry-Restrictions:** Do not enter or allow worker entry into treated areas during the restricted entry interval (REI) of ?? hours/days.

**Notification Instructions:**(If required) Notify workers of the application by warning them orally and by posting warning signs at entrances to treated areas.

#### **Personal Protective Equipment (PPE) Requirements:**

**Handler PPE:** Applicators and other handlers must wear:

- Coveralls over long-sleeved shirt & long pants
- Chemical-resistant gloves such as barrier laminate or viton
- Chemical-resistant footwear plus socks
- Protective eyewear
- Chemical-resistant headgear for overhead exposure
- Chemical-resistant apron when cleaning equipment, mixing, or loading

**Early Entry PPE:** PPE required for early entry to treated areas that is permitted under the Worker Protection Standard and that involves contact with anything that has been treated, such as plants, soil, or water is:

- Coveralls over long-sleeved shirt & long pants
- Chemical-resistant gloves such as barrier laminate or viton
- Chemical-resistant footwear plus socks
- Protective eyewear
- Chemical-resistant headgear for overhead exposure

**Conflicting Instructions:** If the requirements of the WPS conflict with instructions listed elsewhere on this product label, users must obey the more protective requirements.

## **ATTACHMENT 5**

(This option is **NOT** available for fumigant products because of the specialized nature of the fumigant label.)

### **Multi-Product Product-Specific**

(example)

### **"SUPPLEMENTAL LABELING WITH WORKER PROTECTION REQUIREMENTS"**

For compliance with the Worker Protection Standard (40 CFR part 170)

**IMPORTANT: This supplemental labeling does not apply (1) to soil or space fumigant products, (2) to products containing ethyl parathion, or (3) if elsewhere on the product labeling an Agricultural Use Requirements box requires compliance with the Worker Protection Standard (40 CFR Part 170).**

When this product is used on an agricultural establishment (farm, forest, nursery, or greenhouse) for the commercial or research production of agricultural plants, users must comply with the instructions in this supplemental labeling. Users who must comply with these instructions include owners/operators of the agricultural establishment and owners/operators of commercial businesses that are hired to apply pesticides on the agricultural establishment or to perform crop-advising tasks on such establishments. Failure to comply with the requirements on this supplemental labeling and with the Worker Protection Standard (40 CFR part 170) is a violation of Federal law, since it is illegal to use a pesticide product in a manner inconsistent with its labeling.



### REFERENCE TABLE

Product Name	Active Ingredient	EPA Reg. No.	REI	Personal Protective Equipment (PPE) for Handlers	Personal Protective Equipment for Early Entry Workers	Double Notification Required?
<p>Weed Killer 10G granule</p> <p>similar name; match NPS reqts.</p>	dicarbamon	9999-1	12	<p>Handlers must wear:</p> <ul style="list-style-type: none"> <li>• long sleeve shirt and long pants</li> <li>• waterproof gloves</li> <li>• shoes plus socks</li> <li>• protective eyewear</li> </ul>	<p>Early entry workers must wear:</p> <ul style="list-style-type: none"> <li>• coveralls</li> <li>• waterproof gloves</li> <li>• shoes plus socks</li> <li>• protective eyewear</li> </ul>	NO Only Oral
Weed Killer 10WP	dicarbamon and tribocarb	9999-2	48	<p>Mixers and loaders must wear:</p> <ul style="list-style-type: none"> <li>• coveralls over short-sleeved shirt and short pants</li> <li>• waterproof gloves</li> <li>• chemical resistant shoes plus socks</li> <li>• chemical resistant headgear for overhead exposure</li> <li>• chemical resistant apron</li> <li>• dust/mist filtering respirator (MSHA/NIOSH TC-21C)</li> </ul> <p>Applicators and other handlers must wear:</p> <ul style="list-style-type: none"> <li>• coveralls over short-sleeve and short pants</li> <li>• waterproof gloves</li> <li>• chemical resistant shoes plus socks</li> <li>• chemical resistant headgear for overhead exposure</li> <li>• chemical resistant apron when cleaning equipment</li> </ul>	<p>Early entry workers must wear:</p> <ul style="list-style-type: none"> <li>• coveralls over short-sleeved shirt and short pants</li> <li>• chemical-resistant gloves</li> <li>• chemical-resistant shoes plus socks</li> <li>• protective eyewear</li> <li>• chemical-resistant headgear for overhead exposure</li> </ul>	NO Only Oral

Product Name	Active Ingredient	EPA Reg. No.	REI	Personal Protective Equipment (PPE) for Handlers	Personal Protective Equipment for Early Entry Workers	Double Notification Required?
Weed/ Insect Killer Super SEC	dicarbamon and tribocarb and oxyethylion	9999-3	48, 72 hr in ari d are a	<p>Applicators and other handlers must wear:</p> <ul style="list-style-type: none"> <li>• coveralls over long sleeve shirt and long pants</li> <li>• chemical resistant gloves, such as barrier laminate or viton,</li> <li>• chemical resistant footwear</li> <li>• chemical resistant headgear for overhead exposure</li> <li>• protective eyewear</li> <li>• For exposures in enclosed areas, a respirator with either an organic vapor-removing cartridge with a pesticide prefilter (MSHA/NIOSH approval number prefix TC-23C), or a canister approved for pesticides (MSHA/NIOSH approval number prefix TC-14C)</li> <li>• For exposures outdoors, a dust/mist filtering respirator (MSHA/NIOSH approval number prefix TC-21C)</li> </ul>	<p>Early entry PPE:</p> <ul style="list-style-type: none"> <li>• coveralls over long sleeve shirt and long pants</li> <li>• chemical resistant gloves</li> <li>• chemical resistant footwear</li> <li>• chemical resistant headgear for overhead exposure</li> <li>• protective eyewear</li> </ul>	<p>YES Oral and Posting</p>
etc....						
etc....						

## ATTACHMENT 6

### **"SUPPLEMENTAL LABELING WITH GENERIC WORKER PROTECTION REQUIREMENTS"**

For compliance with the Worker Protection Standard (40 CFR part 170)

**IMPORTANT: This supplemental labeling does not apply (1) to soil or space fumigant products, (2) to products containing ethyl parathion, or (3) if elsewhere on the product labeling an Agricultural Use Requirements box requires compliance with the Worker Protection Standard (40 CFR Part 170).**

When this product is used on an agricultural establishment (farm, forest, nursery, or greenhouse) for the commercial or research production of agricultural plants, users must comply with the instructions in this supplemental labeling. Users who must comply with these instructions include owners/operators of the agricultural establishment and owners/operators of commercial businesses that are hired to apply pesticides on the agricultural establishment or to perform crop-advising tasks on such establishments. Failure to comply with the requirements on this supplemental labeling and with the Worker Protection Standard (40 CFR part 170) is a violation of Federal law, since it is illegal to use a pesticide product in a manner inconsistent with its labeling.

### **AGRICULTURAL USE REQUIREMENTS**

Use this product only in accordance with its labeling and with the Worker Protection Standard, 40 CFR 170. This Standard contains requirements for the protection of agricultural workers on farms, forests, nurseries, and greenhouses, and handlers of agricultural pesticides. It contains requirements for training, decontamination, notification, and emergency assistance. It also contains specific instructions and exceptions pertaining to the statements in this labeling about personal protective equipment, restricted-entry intervals, and notification to workers. The requirements in this box only apply to uses of this product that are covered by the Worker Protection Standard (WPS).

Do not apply this product in a way that will contact workers or other persons, either directly or through drift. Only protected handlers may be in the area during application. For any requirements specific to your State or Tribe, consult the agency responsible for pesticide regulation.

**Entry-Restrictions:** Do not enter or allow worker entry during the restricted-entry interval (REI). The restricted-entry interval for this product is:

- the specific number of hours or days (if any) listed elsewhere on the product labeling as the reentry interval or entry restriction for the crop or site, if 12 hours or more;
- 12 hours, if no specific number of hours or days is listed elsewhere on the product labeling as the reentry interval or entry restriction for the crop or site;

**The restricted-entry interval for this product must be at least 12 hours.**

**Notification Instructions:** Follow the rules in the WPS for notifying workers of the application.

**Exception:** If the instructions about notification (if any) listed elsewhere on the product labeling require posting of treated areas (rather than offering a choice), you must notify workers of the application by warning them orally AND by posting signs at entrances to treated areas, following the rules in the WPS.

### **Personal Protective Equipment (PPE) Requirements:**

- **Handler PPE:** Pesticide handlers must wear the PPE listed elsewhere in the product labeling for applicators. If specific PPE is required elsewhere on the product label for specific handling tasks (such as mixing or loading), it must be worn while performing such tasks. In any case, any handler using this product must wear no less than: long-sleeved shirt, long pants, shoes, socks, and chemical-resistant or waterproof gloves.
- **Early Entry PPE:** PPE required for early entry to treated areas that is permitted under the Worker Protection Standard and that involves contact with anything that has been treated, such as plants, soil, or water, is the same PPE as required elsewhere on this product label for applicators, except that any respirator requirement is waived. In any case, the minimum PPE required for any early entry worker exposed to this product is no less than: coveralls, shoes, socks, and chemical-resistant or waterproof gloves.

**Conflicting Instructions:** If the requirements of the WPS conflict with instructions listed elsewhere on this product label, users must obey the more protective requirements.

## **"SUPPLEMENTAL LABELING WITH GENERIC WORKER PROTECTION REQUIREMENTS"**

### **FOR AGRICULTURAL FUMIGANTS**

For compliance with the Worker Protection Standard (40 CFR part 170)

**IMPORTANT:** This supplemental labeling applies **ONLY** to soil or space fumigant products used in the production of agricultural plants. It does not apply if elsewhere on the product labeling an Agricultural Use Requirements box requires compliance with the Worker Protection Standard (40 CFR Part 170).

When this product is used on an agricultural establishment (farm, forest, nursery, or greenhouse) for the commercial or research production of agricultural plants, users must comply with the instructions in this supplemental labeling. Users who must comply with these instructions include owners/operators of the agricultural establishment and owners/operators of commercial businesses that are hired to apply pesticides on the agricultural establishment or to perform crop-advising tasks on such establishments. Failure to comply with the requirements on this supplemental labeling and with the Worker Protection Standard (40 CFR part 170) is a violation of Federal law, since it is illegal to use a pesticide product in a manner inconsistent with its labeling.

#### **AGRICULTURAL USE REQUIREMENTS**

Use this product only in accordance with its labeling and with the Worker Protection Standard, 40 CFR 170. This Standard contains requirements for the protection of agricultural workers on farms, forests, nurseries, and greenhouses, and handlers of agricultural pesticides. It contains requirements for training, decontamination, notification, and emergency assistance. It also contains specific instructions and exceptions pertaining to the statements in this labeling about personal protective equipment, restricted-entry intervals, and notification to workers. The requirements in this box only apply to uses of this product that are covered by the Worker Protection Standard (WPS).

Do not apply this product in a way that will contact workers or other persons, either directly or through drift. Only protected handlers may be in the area during application. For any requirements specific to your State or Tribe, consult the agency responsible for pesticide regulation.

**Entry-Restrictions:** Follow the applicable entry restrictions listed elsewhere on the product labeling.

**Notification Instructions:** Follow the rules in the WPS for notifying workers of the application.

**Exception:** If there are instructions listed elsewhere on the product labeling that requires the posting of specific signs at treated areas, you must notify workers of the application by warning them orally **AND** by posting the signs specified on the labeling.

**Personal Protective Equipment (PPE) Requirements:** Follow the applicable PPE instructions (if any) listed elsewhere on the labeling.

**Conflicting Instructions:** If the requirements of the WPS conflict with instructions listed elsewhere on this product label, users must obey the more protective requirements.