

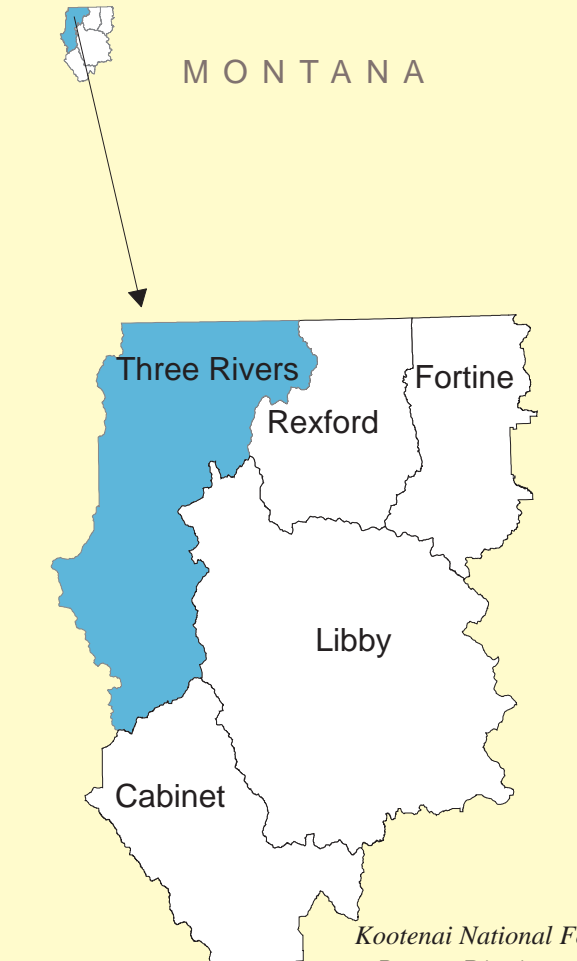
**Kootenai National Forest
Three Rivers
Ranger District**



Montana 2006

America's Great Outdoors
Forest Service
United States Department of Agriculture

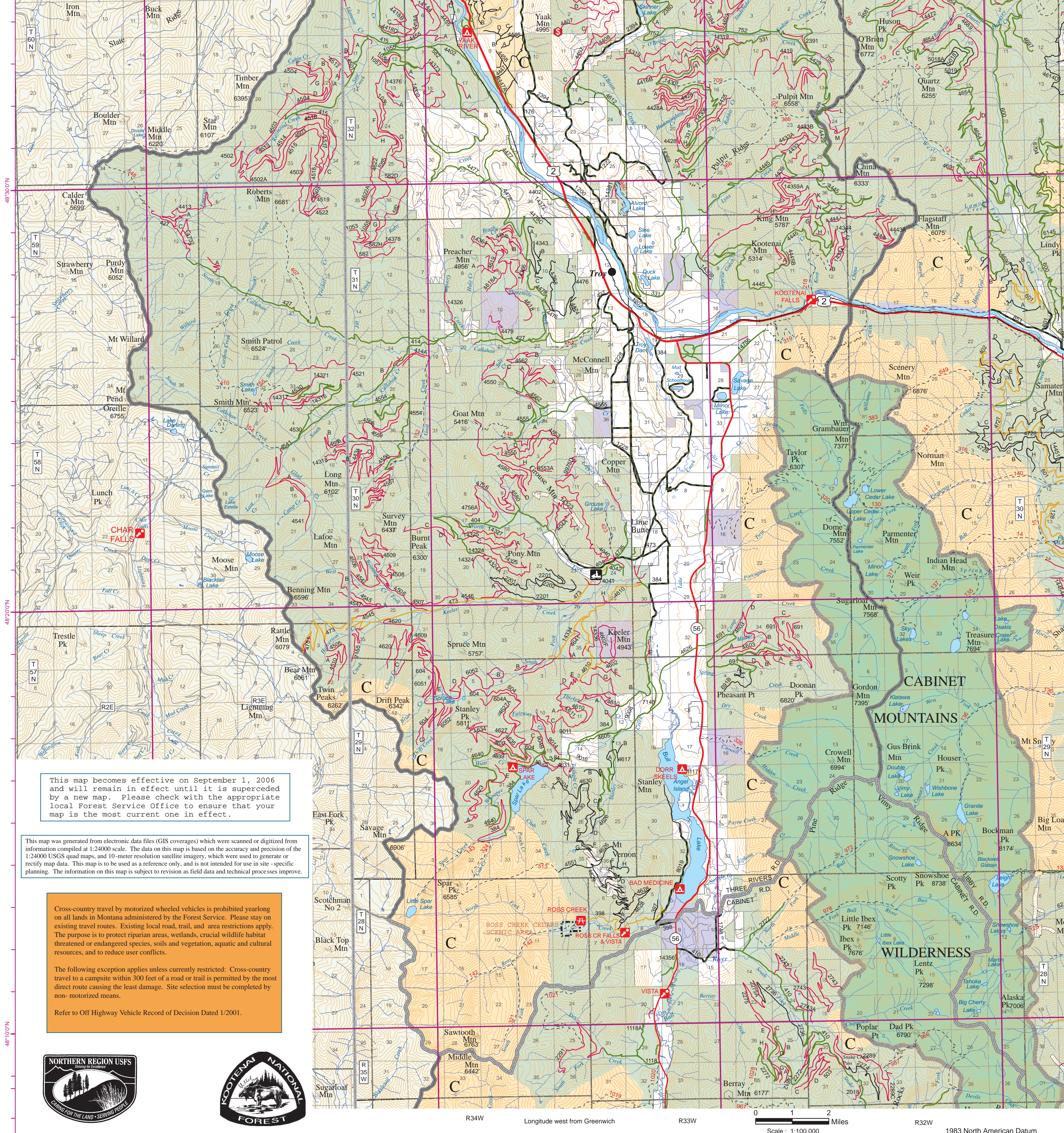
INFORMATION
THREE RIVERS RANGER DISTRICT
Troy Ranger Station
1437 North Highway 2
Troy, MT 59938
(406) 295-4693
<http://www.fs.fed.us/r1/kootenai/>



ISBN 159351039-X
9 781593 510398

For Idaho, Panhandle National Forest travel restrictions and other information, please contact the Idaho Panhandle National Forest Supervisors' Office or applicable Range Station.

KANIKSU NATIONAL FOREST



This map becomes effective on September 1, 2006 and will remain in effect until it is superseded by a new map. Please check with the appropriate local Forest Service Office to ensure that your map is the most current one in effect.

This map was generated from electronic data files (GIS coverages) which were scanned or digitized from information compiled at 1:24,000 scale. The data on this map is based on the accuracy and precision of the 1:24,000 USGS quad maps, and 10-meter resolution satellite imagery which were used to generate or rectify map data. This map is to be used as a reference only, and is not intended for use in site-specific planning. The information on this map is subject to revision as field data and technical processes improve.

Cross-country travel by motorized wheeled vehicles is prohibited yearlong on all lands in Montana administered by the Forest Service. Please stay on existing travel routes. Existing local road, trail, and area restrictions apply. The purpose is to protect riparian areas, wetlands, crucial wildlife habitat (threatened or endangered species, soils, and vegetation, aquatic and cultural resources), and to reduce user conflicts.

The following exception applies unless currently restricted. Cross-country travel to a campsite within 300 feet of a road or trail is permitted by the most direct route causing the least damage. Site selection must be completed by non-motorized means.

Refer to Off Highway Vehicle Record of Decision Dated 1/2001.



This map is made to assist you in accessing your National Forest lands. Some roads are restricted part or all the year. Many of these management decisions were developed in cooperation with the State and U.S. Fish and Wildlife Service, primarily to protect wildlife habitat and provide security. Use of roads is also restricted to protect soil and water quality, and provide non-motorized recreation opportunities.

Roads with travel restrictions shown on this map will be signed or physically closed in some way (gates, earth barriers, etc.). You are responsible for complying with these signs and closures and many others you find in the field, which may not appear on this map.

For various reasons access conditions may change during the year. To assure you have the most current information please contact the Three Rivers Ranger District at (406) 295-4693.

Failure to comply with these restrictions and regulations is in violation of the Secretary of Agriculture's Regulations, title 36 CFR 261.50(b).

Three Rivers Ranger District has a program for disabled hunter vehicle access behind some closed gates during the fall deer/cricket rifle-hunting season. For more information on this program, or if you have any questions concerning roads or road access, please contact Three Rivers Ranger District at (406) 295-4693.

Report fish or game violations to the Montana Department of Fish, Wildlife and Parks using their toll free number 1-800-847-6668.

Roads are an important tool in National Forest resource management. Please help us to manage wisely and enjoy traveling in your National Forest.

For complete listing of closures, contact the local Ranger District or the Supervisor's office.

/s/ Michael Balboni
District Ranger

LEGEND

	Roads typically open to all vehicles. May be seasonally impassable due to weather and road conditions. Not necessarily passable to conventional passenger vehicles.		
	Roads seasonally restricted. See back of map for dates of restrictions.		
	Roads restricted yearlong to motor vehicles, open to snow vehicles December 1 through April 30.		
	Roads restricted yearlong to motor vehicles, including snow vehicles.		
	Snowmobile trail closed to cars, trucks and motorcycles December 1 through April 30. Trail restricted from trailhead to terminus.		
	Area restricted to all motorized vehicles yearlong including over the snow vehicles.		
	Wilderness lands closed yearlong to motorized vehicles, mechanized equipment, and bicycles.		
	U.S. Highway		State Boundary
	State Highway		Ranger District Boundary
	County Roads		Scenic Area Boundary
	Trails		Lands Administered by the Kootenai National Forest
	Private Roads within District Boundary or any roads on adjacent Forest		Adjacent National Forest Ownership not defined
	Railroad		State and Other Federal Lands
	Campground		Contours Interval 200 Feet
	Picnic Site		Latitude/Longitude Grid
	Rental Cabin		Rental Lookouts
	Point of Interest		Lookouts

POINTS OF INTEREST



Photo by Janet Lundeen

Yaak Falls - Scenic Viewing

Yaak Falls is located at the 7 mile marker on the Yaak River Hwy. There is a pullout with viewing from the parking area and also a short hiking trail located in the Yaak River Campground that leads to the lower falls area. Spectacular viewing, use caution during high water.

West Fork Yaak Falls - Scenic Viewing

West Fork Yaak Falls is located on the Forest Road 92 at the 39 mile marker. A short hike leads up to the viewing platform at the falls.



Photo by Brandon Smith

Ross Creek Cedars - Giant Cedar Grove

Ross Creek Cedars is accessed off of the Bull Lake Highway. The road to Ross Creek Cedars is located at the south end of Bull Lake, follow the signs. There is a 1 mile interpretive trail through the Cedars, benches are located along the trail for contemplation and to rest. There are picnic sites located at the parking area and public restrooms are available. Seasonal due to weather: estimated open dates are May 20th to October 15th.

Callahan Interpretive Trail - Interpretive Trail - Scenic Viewing

This trail is located 1.5 miles up Callahan Creek Road off of Highway 2 at the town of Troy. The trail runs along the old railroad grade that was used for mining and logging. Interpretive signs and benches are located along the trail.

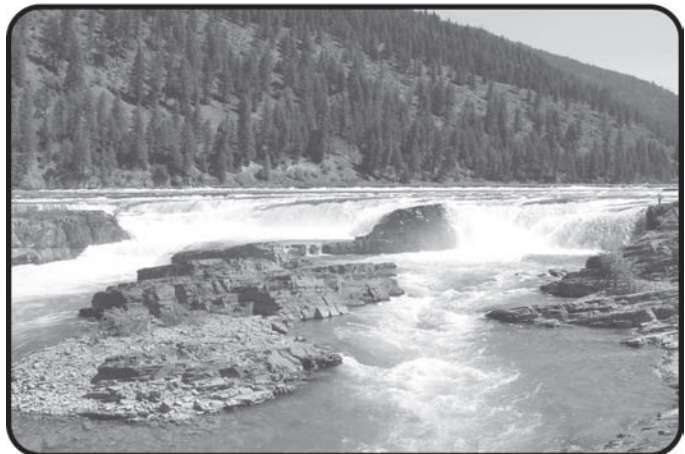


Photo by Brandon Smith

Kootenai Falls - Scenic Viewing

Kootenai Falls is located on U.S. Highway 2 between Troy and Libby. Opportunities include scenic views, hiking, picnicking and a swinging bridge across the Kootenai River.

Old Highway 2 - Interpretive Trail - Scenic Viewing

Old Highway 2 is a 2.3 mile hike along the old highway route above the Kootenai River. Interpretive signs and benches are located along the trail. Scenic view of the Kootenai River and Kootenai River Valley.

Mt. Baldy-Buckhorn Ridge Lookout



This 26' lookout has been used as an observation point for spotting fires since 1910. It is equipped with propane stove, refrigerator, heater and three mattresses. There is no indoor plumbing or fresh water supply. Due to tower height we discourage bringing children.

Garver Mtn Lookout



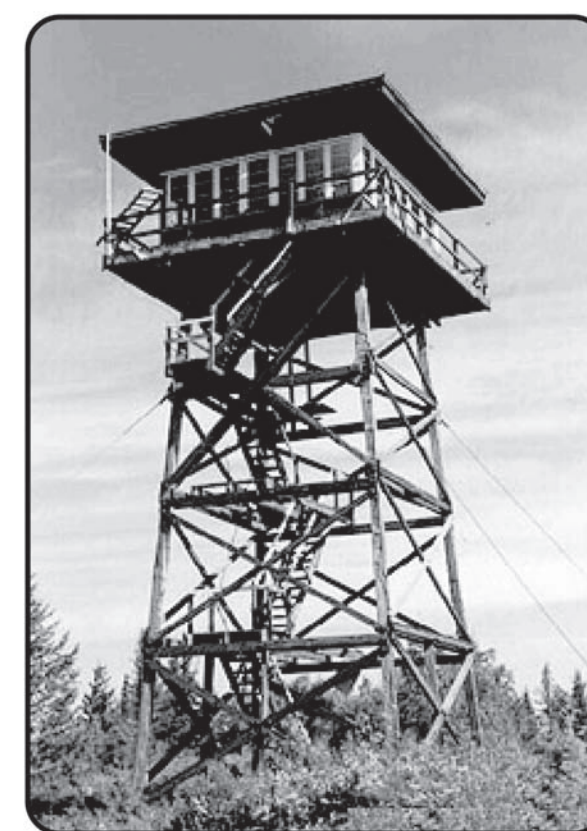
This 40' lookout has been used as an observation point for spotting fires since 1929. It is equipped with a woodstove and two bunks with mattresses. There is no indoor plumbing or fresh water supply. Due to tower height we discourage bringing children.

Upper Ford Cabin



This rustic rangers cabin was built in the late 1920's, and is open year round for rental. This furnished cabin is equipped with propane stove, refrigerator, heater, accommodations to sleep 7 people and all the necessary kitchen furnishings to serve 8. There is no indoor plumbing or fresh water supply.

Yaak Mtn Lookout



This 40' lookout has been used as an observation point for spotting fires since 1958. It is equipped with propane stove, refrigerator, heater and three mattresses. There is no indoor plumbing or fresh water supply. Due to tower height we discourage bringing children.

The Kootenai Forest has eleven cabin and lookout rentals, four group day use sites and two campgrounds that can be reserved through the National Recreation Reservation Service (NRRS). These can be reserved online through www.nrsrvsusa.com or by calling 1-877-444-6777. Available sites and phone numbers for additional information are:

Rexford District, 406-296-2536 - McGuire Mountain and Webb Mountain Lookouts and some camping sites at Rexford Bench Campground.

Fortune District, 406-882-4451 - Wam Mountain Lookout, South Dickey Lake Group Site, and some camping sites at North Dickey Lake Campground.

Three Rivers District, 406-295-4493 - Yaak Mountain, Garver Mountain, and Baldy-Buckhorn Lookouts, Upper Ford Ranger Station, and Yaak River Group Site.

Libby District, 406-293-777 - Big Creek Baldy Lookout, Timberlane Campground and Group Site, and McGillivray Group Site.

Cabinet District, 406-827-3533 - Gem Peak and Sex Peak Lookouts and Bull River Guard Station.

**Kootenai National Forest
1101 US Hwy 2 West
Libby, MT 59923
Travel Management**

Travel Management on the Kootenai National Forest is managed following a wide range of laws and regulations. Each District on the Forest has a travel management plan which is evaluated each year. In an effort to manage the National Forest for a variety of uses, many roads, trails and some areas are closed to motorized use, sometimes seasonally while others may be closed yearlong. Purposes may include habitat security, protection of sensitive plants or animals, watersheds, extensive infestations of noxious weeds, and many others. In almost all situations, non motorized access by foot travel or bicycle is welcome.

In order to better serve your interests you will notice the maps this year have been greatly improved. However we have only listed the seasonally restricted roads along with trails restricted to motorized use. For a complete list, please visit one of our Forest Offices. Ask to be provided with a copy of the Forest Order related to travel management for the specific district, and a copy will be provided.

Each Travel management order includes 4 portions. The Order itself along with 3 attachments:

Attachment A: Roads 36 CFR 261.54 - NATIONAL FOREST SYSTEM ROADS

Using any type of vehicle prohibited by the order. [36 CFR 261.54(a)] includes the entire list of road closures. Each road number will also include a closure code which explains the dates which the road is unavailable for motorized travel

Attachment B: Trails 36 CFR 261.55 - NATIONAL FOREST SYSTEM TRAILS

Using any type of vehicle prohibited by the order. [36 CFR 261.55(b)] includes the trails which are closed to motorized use.

Attachment C: AREAS 36 CFR 261.56 - USE OF VEHICLES OFF NATIONAL FOREST SYSTEM ROADS.

When provided by an order, it is prohibited to possess or use a vehicle off National Forest System Roads. [36 CFR 261.56] lists the specific areas which may be closed to motorized use. NON MOTORIZED TRAVEL IS WELCOME

Each district may list certain exemptions to the order, such as for firefighting, Search and Rescue, and Law Enforcement. Limits are placed on Administrative Use by Forest Service work crews. Specific permission is required for each entry and values such as protection of animals, habitat, and cost to taxpayers of hiking people into an area are evaluated.

Thank you for visiting our National Forests.

/s/ Paul Bradford

PAUL BRADFORD
Forest Supervisor
Kootenai National Forest

CLOSURE DATES CODES

- 02 Restricted Seasonally to motor vehicles October 15 through June 30, open to snow vehicles December 1 through April 30.
- 03 Restricted Seasonally to motor vehicles December 1 through April 30, including snow vehicles.
- 07 Restricted Seasonally to motor vehicles April 1 through May 31, including snow vehicles.
- 08 Restricted Seasonally to motor vehicles December 1 through April 30, open to snow vehicles December 1 through April 30.
- 10 Restricted Seasonally to motor vehicles, open to snow vehicles. (Administrative sites, campground, Kooconasua Reservoir), Open hours are posted at the District Office.
- 12 Restricted Seasonally to motor vehicles December 1 through April 30, including snow vehicles.

ROAD NUMBER	NAME	CLOSURE DATES CODE
398	ROSS CREEK	03
471	SEVENTEEN MILE CREEK	07
473	KEELER CREEK RATTLE	08
1114	PETE CR CAMPGROUND	10
1117	DORR SKEELS CAMPGROUND	10
2338	COUGAR RIDGE	12
4802	KEELER MTN LOOKOUT	12
4610	MAIN THICKET	02
6886	WHITETAIL CAMPGROUND	10
8012	BAD MEDICINE CAMPGROUND	03
8012A	BAD MEDICINE CAMPGROUND A	03
14312	TEEPEE FLATS	12
14334	SOUTH KEELER	02
14334B	SOUTH KEELER B	02
14704	BAD MEDICINE CAMPGROUND LOOP 1	03
14704A	BAD MEDICINE CAMPGROUND LOOP 2	03

TRAILS CLOSED YEARLONG TO ALL MOTORIZED VEHICLES, INCLUDING OVER THE SNOW MACHINES:

Trail #	Road	Trailhead
Trail #2W	Old Hwy 2	Trailheads at end of Forest Service Road (FSR) #14756 in Sec.22, T31N, R33W; and at jct. W/State Hwy 2 in Sec.13, T31N, R33W.
Trail #142	Ross Creek	Trailhead at jct. W/Ross Creek Cedars Trail #405 in Sec.12, T28N, R34W.
Trail #143	Little Spar Lake	Trailhead on road #384 in Sec.29, T29N, R34W.
Trail #153	Callahan Historic	Trailhead at jct. W/FSR #427 in Sec.23, T31N, R34W.
Trail #319	Grambauer Mtn.	Trailhead in Sec.22, T31N, R33W.
Trail #320	Taylor Peak	Trailhead at jct. W/FSR #4621 in Sec.16, T30N, R33W.
Trail #321	South Fork Ross Cr	Trail head at Jct. W/Ross Creek Trail #142 in Sec.15, T28N, R34W.
Trail #324	Spar Peak	Trailhead on FSR #384 in Sec. 29, T29N, R34W.
Trail #326	Crowell Creek	Trailhead at jct. W/Hwy. 56 in Sec. 6, T29N, R33W.

TRAILS CLOSED YEARLONG TO ALL MOTORIZED VEHICLES, INCLUDING OVER THE SNOW MACHINES; AND NO OVERNIGHT CAMPING:

Trail #405	Ross Creek Cedars	Trailhead at jct. W/FSR #398 in Sec. 12, T28N, R34W (No Overnight Camping).
------------	-------------------	---

TRAILS CLOSED YEARLONG TO MOTORIZED VEHICLES, EXCEPT OVER THE SNOW MACHINES:

Trail #9	Vinal Creek	Trailhead on FSR #746 in Sec. 29, T36N, R31W.
Trail #162	Hoskins Lake	Trailhead on FSR #746 in Sec. 17, T36N, R31W.
Trail #177	Midge Crk/Rock Candy	Trailheads at jct. W/FSR #5902 in Sec. 28, T37N, R33W; and w/Trail #461 in Sec.12, T36N, R34W.
Trail #199	Vinal Lake	Trailhead on FSR #746 in Sec. 31, T36N, R31W.
Trail #397	Fish Lakes	Trailhead at jct. W/Vinal Creek Trail #9 in Sec. 23, T36N, R31W.
Trail #461	Rock Candy	Trailheads at jct. W/FSR #435 in Sec.34, T37N, R34W; and Sec.19, T36N, R33W.

HELP SMOKEY

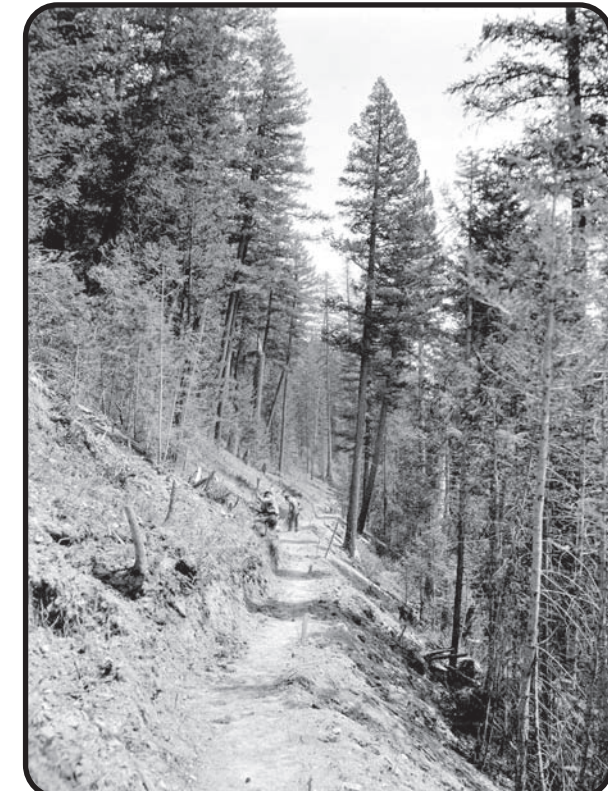


PREVENT WILDFIRES

Month	Burning Restrictions	Comments
January	No Burning Allowed	No Burning Allowed
February	No Burning Allowed	No Burning Allowed
March	Open Burning	Use Caution
April	Open Burning	Use Caution
May	Permit Required	Contact Troy Ranger Station
June	Permit Required	Contact Troy Ranger Station
July	Permit Required	Contact Troy Ranger Station
August	Permit Required	Contact Troy Ranger Station
September	Permit Required	Contact Troy Ranger Station for permit and air shed
October	Permit May be Required	Contact Troy Ranger Station for permit and air shed
November	Open Burning	Contact Troy Ranger Station for air shed restrictions
December	No Burning Allowed	No Burning Allowed



You are responsible and liable if your fire escapes



Enjoy the Pieces of the Past you Find! But please leave them undisturbed for others to enjoy too!

It is against Federal Law to disturb, damage or collect from archaeological or historic sites.

USFS Photos: Clockwise from upper left: (1) Logging railroad in Callahan Creek (Photo by KD Swan, 1926). Visit the Callahan Interpretive Trail. (2) Spread Creek Bridge (Photo by KD Swan, 1926). (3) Cabinier Ranger Station (Photo by Beatty, 1920) now the site of Troy Ranger Station. (4) Grading work on the Upper Yaak Road (Photo by KD Swan, 1926). Visit the Old Dodge Summit Trail.

BE BEAR AWARE

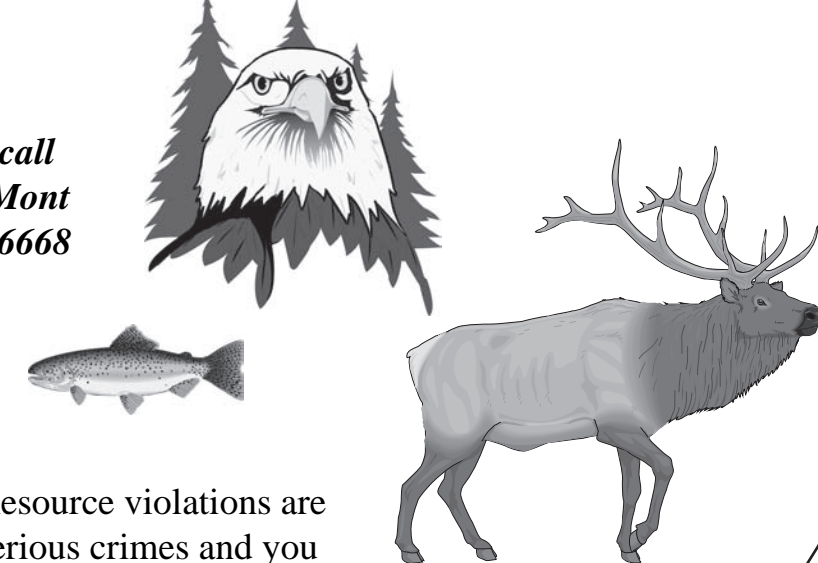
Your National Forest is home to black and grizzly bears. Following these rules will help you and future visitors to be safe, while avoiding the need to destroy bears that become a nuisance or dangerous due to unsafe human behaviors. Bears are attracted to food, drinks, garbage, pets, livestock and pet/livestock foods, cosmetics, toiletries, and other odorous substances.

For more detailed information and requirements, contact the nearest Forest Service Office. Additional information is also available at these internet sites:
<http://www.bearaware.org>
<http://www.lwfwf.org>
<http://www.bearaware.bc.ca>



Be An Outdoor Observer
24 - hours a day, seven days a week

Make the call
Call Tip - Mont
1-800-847-6668



Resource violations are serious crimes and you can help stop them...



Why Are Noxious Weeds a Problem?

Noxious weeds degrade the environment and wildlife habitat by reducing native forage and other native plants. They also can increase soil erosion and lower water quality. Although many weeds are pretty, their negative effects on the environment and the economy are substantial. Because most noxious weeds have come from other countries, there are few, if any, natural controls to keep weed populations from taking over once they get established.

So what can you do to reduce the spread of weeds?

- 1) Keep your vehicle and recreation gear clean of weeds and seeds.
- 2) Don't drive through or park in weed patches. Weeds or their seeds can get caught in the undercarriage, grill, bumper or tires and transported to new locations.
- 3) Don't take vehicles behind locked gates, or off-road (this is illegal, too).
- 4) Use weed seed free feed for your stock.
- 5) Don't pick off weed seeds off your clothes or pets and throw them on the ground. Dispose of them properly.
- 6) Don't pick weed "bouquets" and take them home or to your campsite.

Your help is appreciated!

For more information contact: Three Rivers Noxious Weeds Specialist (406) 295-4693.



Rush Skeleton Weed



Orange Hawkweed



Oxeye Daisy



Common Houndstongue



Common Tansy



Dalmatian Toadflax