

District of Columbia Courts

2007 Statistical Summary



2007

Open to All ♦ Trusted by All ♦ Justice for All

TABLE OF CONTENTS

DISTRICT OF COLUMBIA COURTS' BUDGET

Operating Budget
Capital Budget
Defender Services Appropriation by Fund

COURT OF APPEALS' CASE ACTIVITY FOR 2003-2007

Filings by Category & Ratio to Dispositions
Dispositions by Method
Motions & Petitions
Time on Appeal (Number of Days)
Bar Admissions
Bar Disciplinary Actions

SUPERIOR COURT

Superior Court Case Activity for 2007
New Case Filings, 2003-2007
Case Resolutions, 2003-2007
Pending Caseloads, 2003-2007

CIVIL DIVISION

Civil Division Case Activity for 2007
Civil Division Pending Caseload, 2007

CRIME VICTIMS COMPENSATION PROGRAM

Crime Victims Compensation Program, 2006-2007

CRIMINAL DIVISION

Criminal Division Case Activity for 2007
Criminal Division Pending Caseload, 2007

DOMESTIC VIOLENCE UNIT

Domestic Violence Unit Case Activity for 2007
Domestic Violence Pending Caseload, 2007

FAMILY COURT OPERATIONS

Family Court Operations Case Activity for 2007
Family Court Operations Pending Caseload, 2007

FAMILY COURT SOCIAL SERVICES

Social Services Division Activity for 2007

MULTI-DOOR DISPUTE RESOLUTION DIVISION

Civil Alternative Dispute Resolution Activity, 2003-2007
Family Alternative Dispute Resolution Activity, 2003-2007
Community Information & Referrals By Type of Dispute, 2007

OFFICE OF THE AUDITOR-MASTER

Auditor-Master Case Activity, 2006-2007

PROBATE DIVISION

Probate Division Case Activity for 2007
Account and Fee Activity, 2003-2007
Probate Division Case Activity and Pending Caseload, 2003-2007

SPECIAL OPERATIONS ACTIVITY

Appeals Coordinators' Office, 2007
Office of Court Interpreting Services, 2003-2007
Petit Juror Activity, 2003-2007
Tax Division Case Activity, 2003-2007

COURT REPORTING AND RECORDING DIVISION

Transcript Production from Reporters, 2003-2007
Transcript Production from Recordings, 2003-2007
Transcript Production, 2003-2007

DISTRICT OF COLUMBIA COURTS' BUDGET

OPERATING BUDGET

	FY 2007	FY 2008
	<u>Appropriation</u>	<u>Appropriation</u>
Court of Appeals	\$ 9,106,000	\$ 10,800,000
Superior Court	\$ 86,469,000	\$ 98,359,000
Court System	<u>\$ 41,226,000</u>	<u>\$ 52,170,000</u>
Total	\$ 136,801,000	\$ 161,329,000

CAPITAL BUDGET

Capital Budget	\$ 79,922,000	\$ 62,591,000
----------------	---------------	---------------

DEFENDER SERVICES APPROPRIATION BY FUND

Criminal Justice Act	\$ 28,875,000	\$ 31,864,000
Counsel for Child Abuse & Neglect	\$ 13,100,000	\$ 14,456,000
Guardianship	<u>\$ 1,500,000</u>	<u>\$ 1,655,000</u>
Total	\$ 43,475,000	\$ 47,975,000

COURT OF APPEALS' CASE ACTIVITY FOR 2003-2007

FILINGS BY CATEGORY & RATIO TO DISPOSITIONS

	2003 ^a	2004 ^a	2005 ^a	2006	2007
Mandatory Appeal & Bar Cases					
Pending Jan. 1	2,415	2,319	2,361	2,518	2,613
Filings:					
Criminal	633	822	716	662	619
Civil	531	415	367	392	365
Family	195	186	174	188	128
Agency	114	125	219	242	220
Special Proceedings	13	16	16	2	11
Bar Cases	96	115	95	139	94
Total Filings	1,582	1,679	1,587	1,625	1,437
Reinstated	29	23	28	28	40
Available for Disposition	4,026	4,021	3,976	4,171	4,090
Total Dispositions	1,707	1,660	1,458	1,558	1,763
Pending Dec. 31	2,319	2,361	2,518	2,613	2,327
Original Jurisdiction Matters					
Pending Jan. 1	4	2	1	2	-
Filings	77	70	57	45	56
Dispositions	79	71	56	47	55
Pending Dec. 31	2	1	2	-	1
Discretionary Jurisdiction Matters					
Pending Jan. 1	3	2	2	-	3
Filings	52	24	21	17	17
Dispositions	53	24	23	14	19
Pending Dec. 1	2	2	-	3	1
Total Filings	1,711	1,773	1,665	1,687	1,510
Total Dispositions	1,839	1,755	1,537	1,619	1,837
Clearance Rate^b	107%	99%	92%	96%	122%

^a Figures revised to reflect additional filings from Superior Court not previously reported.

^b The clearance rate, a measure of court efficiency, is the total number of cases disposed divided by the total number of cases added to the caseload (i.e., new filings and reinstated) during a given time period. Rates of over 100% indicate that the court disposed of more cases than were added, thus reducing the pending caseload.

DISPOSITIONS BY METHOD

	2003	2004	2005	2006 ^a	2007
Opinion	299	295	323	302	349
Memorandum Opinion & Judgment	619	506	512	547	646
Judgment	57	84	51	73	136
Order	864	870	651	697	706
Total	1,839	1,755	1,537	1,619	1,837

^a Figures revised to reflect additional filings from Superior Court not previously reported.

MOTIONS & PETITIONS

	2003	2004	2005	2006	2007
Procedural Motions	5,243	4,738	4,249	4,715	4,431
Substantive Motions	1,667	1,618	1,603	1,286	1,467
Petitions for Rehearing/Rehearing En Banc	221	188	208	153	157

TIME ON APPEAL (Number of Days)

	2003	2004	2005	2006	2007
Overall Time On Appeal^a					
Average	623	550	562	575	645
Median	475	412	439	446	505
Time from Notice of Appeal to Filing of Trial Court or Agency Record					
Average	317	288	249	246	256
Median	196	149	131	149	124
Time from filing of Trial Court or Agency Record to Completed Briefing by the Parties					
Average	270	245	220	256	254
Median	170	155	148	189	158
Time from Completed Briefing to Argument or Submission					
Average	150	174	192	202	210
Median	149	176	186	213	204
Time from Argument or Submission to Court Decision					
Average	107	115	125	117	185
Median	16	19	21	17	27
Overall Time On Appeal for Certain Matters					
Bar Cases					
Average	435	470	516	450	371
Median	279	414	420	282	269
Original Jurisdiction Matters					
Average	11	15	14	17	12
Median	8	7	8	8	7
Discretionary Jurisdiction Matters					
Average	32	45	22	31	28
Median	27	33	20	29	28

^aThe time includes periods when cases are not under active processing by the Court of Appeals. For example, these figures include times during which some appeals are stayed for reasons such as bankruptcy or further trial court proceedings. In reciprocal bar matters, the Court opens a case file upon notification that another jurisdiction has disciplined a member of the D.C. Bar, but will not commence active processing of the matter until it received a Report and Recommendation from the Board on Professional Responsibility.

BAR ADMISSIONS

	2003	2004	2005	2006	2007
Admission to Bar by Examination:					
Applications Filed	830	777	687	828	687
Applications Withheld	117	111	94	133	100
Applications Rejected	15	16	16	28	28
Unsuccessful Applicants	351	325	288	341	359
Successful Applicants	362	341	305	354	328
Applicants Admitted	337	337	305	334	325
Admission to Bar by Motion:					
Applications Filed	2,611	2,752	3,610	3,201	3,234
Applications Admitted	2,157	2,629	2,741	3,621	3,137
Applicants Rejected	2	6	10	18	8
Certificates of Good Standing	8,153	9,448	9,053	9,546	9,850
Certification for Law Student in Court Program	395	351	306	283	283
Certification as Special Legal Consultant	15	9	9	7	13

BAR DISCIPLINARY ACTIONS

	2003	2004	2005	2006	2007
Disbarments	26	29	37	35	23
Suspensions	11	24	41	29	33
Public Censure	6	7	10	8	8
Petitions for Reinstatement	3	3	2	2	2
Petitions for Formal Hearings	57	22	22	35	38
Miscellaneous Petitions	11	5	7	7	11

SUPERIOR COURT CASE ACTIVITY FOR 2007

DIVISION/OPERATION OF SUPERIOR COURT	Cases Pending Jan 1.	Cases Filed	Cases Reactivated/ Reopened	Total Cases Available for Resolution	Cases Resolved	Cases Pending Dec. 31	% Change in Pending 2006 - 2007	Clearance Rate ^a
Civil Division^b								
Civil Actions	7,427	8,662	813	16,902	10,331	6,571	-11.5%	109%
Landlord & Tenant	18,119	46,082	467	64,668	52,942	11,726	-35.3%	na
Small Claims	13,090	12,087	248	25,425	21,466	3,959	-69.8%	na
Total	38,636	66,831	1,528	106,995	84,739	22,256	-42.4%	na
Criminal Division^c								
D.C. Misdemeanors	968	3,115	-	4,083	3,231	805	-16.8%	na
Felony	1,840	5,256	-	7,096	5,534	1,716	-6.7%	na
Traffic	2,494	8,845	-	11,339	7,761	2,476	-0.7%	na
U.S. Misdemeanors	2,672	10,687	-	13,359	10,523	2,738	2.5%	na
Total	7,974	27,903	-	35,877	27,049	7,735	-3.0%	na
Domestic Violence Unit^d								
Intrafamily	249	3,863	281	4,393	4,182	211	-15.3%	101%
Misdemeanors	477	2,880	543	3,900	3,066	834	74.8%	90%
Total	726	6,743	824	8,293	7,248	1,045	43.9%	96%
Family Court Operations								
Abuse & Neglect	2,721 ^e	532	26	3,279	760	2,519	-7.4%	136%
Adoption	279	250	-	529	251	278	-0.4%	100%
Divorce/Custody/Miscellaneous	2,202	3,641	-	5,843	3,310	2,533	15.0%	91%
Juvenile	912 ^e	3,123	17	4,052	3,315	737	-19.2%	106%
Mental Health	486	1,250	68	1,804	1,363	441	-9.3%	103%
Mental Retardation	1,244	26	-	1,270	16	1,254	0.8%	62%
Paternity & Child Support	6,608	3,917	568	11,093	4,061	7,032	6.4%	91%
Total	14,452	12,739	679	27,870	13,076	14,794	2.4%	97%
Probate Division								
Conservatorships	195	-	-	195	63	132	-32.3%	na
Foreign Proceedings	-	118	-	118	107	11	-	91%
Formal Probate	1,115	1,381	100	2,596	1,916	680	-39.0%	129%
Guardianships	126	29	-	155	104	51	-59.5%	359%
Interventions	2,264	425	-	2,689	217	2,472	9.2%	51%
Small Estates	45	615	29	689	644	45	-	100%
Trusts	319	38	-	357	13	344	7.8%	34%
Total	4,064	2,606	129	6,799	3,064	3,735	-8.1%	na
Tax Division								
Civil Cases	423 ^e	227	-	650	297	353	-16.5%	131%
Criminal Cases	6 ^e	7	-	13	5	8	33.3%	71%
Total	429	234	-	663	302	361	-15.9%	129%
Grand Total	66,281	117,056	3,160	186,497	135,478	49,926	-24.7%	na

^aThe clearance rate, a measure of court efficiency, is the total number of cases disposed divided by the total number of cases added (i.e., new filings/reactivated/reopened) during a given time period. Rates of over 100% indicate that the court disposed of more cases than were added, thus reducing the pending caseload.

^bThe case resolution figures for the Civil Division's Landlord & Tenant and Small Claims & Conciliation Branches include cases administratively closed as a result of data verification activities due to the conversion to the Court's integrated justice information system. Accordingly, the calculation of clearance rates for these caseloads and the Division's overall caseload would not be appropriate. Clearance rates will be provided beginning in CY 2008.

^cBeginning pending figures were adjusted after an audit of the caseload. Cases available for resolution for the Criminal Division may be subject to adjustment in the future as a result of ongoing data verification activities due to the conversion to the Court's integrated justice information system. Accordingly, the calculation of clearance rates for these caseloads and the Division's overall caseload would not be appropriate. Also, as a result of the conversion, the number of reactivated/reopened cases cannot be reported separately, but are included in the number of cases available for resolution.

^dThe Domestic Violence Unit receives Intrafamily (Civil Protection Order) and U.S. Misdemeanor cases as direct filings.

^eFigure adjusted after an audit of the caseload.

NEW CASE FILINGS, 2003-2007

	2003	2004	2005	2006	2007	% Change 2006 - 2007
Civil Division						
Civil Actions	10,277	10,553	10,162	9,540	8,662	-9.2%
Landlord & Tenant	47,951	48,999	45,346	46,050	46,082	0.1%
Small Claims	17,891	15,756	14,622	15,488	12,087	-22.0%
Total	76,119	75,308	70,130	71,078	66,831	-6.0%
Criminal Division^a						
D.C. Misdemeanors	2,709	3,242	3,625	3,119	3,115	-0.1%
Felony	8,016	8,013	7,535	5,889	5,256	-10.7%
Special Proceedings	3,297	3,197	3,489	na	na	na
Traffic	6,745	7,128	7,657	9,317	8,845	-5.1%
U.S. Misdemeanors	11,540	13,571	13,371	10,878	10,687	-1.8%
Total	32,307	35,151	35,677	29,203	27,903	-4.5%
Domestic Violence Unit						
Intrafamily	4,194	3,845	3,748	3,960	3,863	-2.4%
U.S. Misdemeanors	4,392	4,244	4,426	2,783	2,880	3.5%
Total	8,586	8,089	8,174	6,743	6,743	0.0%
Family Court Operations						
Abuse & Neglect	853	802	933	652	532	-18.4%
Adoption	504	467	324	299	250	-16.4%
Divorce/Custody/Misc.	3,589	3,507	3,659	4,131	3,641	-11.9%
Juvenile	2,412	2,783	2,772	2,978	3,123	4.9%
Mental Health	1,958	1,623	1,155	1,136	1,250	10.0%
Mental Retardation	25	16	49	26	26	0.0%
Paternity & Child Support	2,468	2,595	3,192	4,603	3,917	-14.9%
Total	11,809	11,793	12,084	13,825	12,739	-7.9%
Probate Division						
Conservatorships	-	-	-	-	-	-
Foreign Proceedings	109	132	153	128	118	-7.8%
Formal Probate	1,431	1,515	1,429	1,492	1,381	-7.4%
Guardianships	64	38	29	45	29	-35.6%
Interventions	281	326	316	399	425	6.5%
Small Estates	646	642	747	689	615	-10.7%
Trusts	8	13	23	15	38	153.3%
Total	2,539	2,666	2,697	2,768	2,606	-5.9%
Tax Division						
Civil Cases	172	189	166	184	227	23.4%
Criminal Cases	7	12	14	11	7	-36.4%
Total	179	201	180	195	234	20.0%
Grand Total	131,539	133,208	128,942	123,812	117,056	-5.5%
Monthly Average	10,962	11,101	10,745	10,318	9,755	-5.5%

^aBeginning in CY 2006, cases that are "not papered" (where no formal charges were filed by the prosecutor) are no longer included in filings and resolutions.

CASE RESOLUTIONS, 2003-2007

	2003	2004	2005	2006	2007	% Change 2006 - 2007
Civil Division						
Civil Actions	12,296	11,325	10,094	13,311	10,331	-22.4%
Landlord & Tenant	48,387	46,087	43,720	47,121	52,942	12.4%
Small Claims	18,493	16,485	14,209	17,238	21,466	24.5%
Total	79,176	73,897	68,023	77,670	84,739	9.1%
Criminal Division						
D.C. Misdemeanors	3,106	4,591	4,736	2,543	3,231	27.1%
Felony	10,206	10,216	10,011	5,833	5,534	-5.1%
Special Proceedings	3,379	3,233	3,497	na	na	na
Traffic	8,334	10,884	11,402	6,684	7,761	16.1%
U.S. Misdemeanors	14,935	20,426	20,574	10,035	10,523	4.9%
Total	39,960	49,350	50,220	25,095	27,049	7.8%
Domestic Violence Unit^a						
Intrafamily	4,779	5,074	4,545	4,175	4,182	0.2%
Paternity & Child Support	471	348	405	271	na	na
U.S. Misdemeanors	4,742	4,876	4,799	3,473	3,066	-11.7%
Total	9,992	10,298	9,749	7,919	7,248	-8.5%
Family Court Operations^a						
Abuse & Neglect	1,387	1,565	1,197	1,071	760	-29.0%
Adoption	579	802	495	356	251	-29.5%
Divorce/Custody/Misc.	4,678	3,576	3,499	4,079	3,310	-18.9%
Juvenile	2,247	2,469	2,526	2,689	3,315	23.3%
Mental Health	3,760	1,590	1,073	1,121	1,363	21.6%
Mental Retardation	49	11	6	14	16	14.3%
Paternity & Child Support	5,893	4,218	1,900	3,608	4,061	12.6%
Total	18,593	14,231	10,696	12,938	13,076	1.1%
Probate Division						
Conservatorships	25	48	29	20	63	215.0%
Foreign Proceedings	109	132	153	128	107	-16.4%
Formal Probate	1,426	2,025	2,743	2,921	1,916	-34.4%
Guardianships	102	157	91	88	104	18.2%
Interventions	227	280	187	171	217	26.9%
Small Estates	719	717	800	768	644	-16.1%
Trusts	2	4	2	4	13	225.0%
Total	2,610	3,363	4,005	4,100	3,064	-25.3%
Tax Division						
Civil Cases	111	161	160	209	297	42.1%
Criminal Cases	5	5	-	17	5	-70.6%
Total	116	166	160	226	302	33.6%
Grand Total	150,447	151,305	142,853	127,948	135,478	5.9%
Monthly Average	12,537	12,609	11,904	10,662	11,290	5.9%

^aBeginning CY 2007, Paternity and Child Support case activity, formerly reported in the Domestic Violence Unit, is reported in Family Court Operations.

PENDING CASELOADS, 2003-2007

	2003	2004	2005	2006	2007	% Change 2006 - 2007
Civil Division						
Civil Actions	10,216	10,063	10,364 ^a	7,427	6,571	-11.5%
Landlord & Tenant	3,803	6,888	18,863 ^a	18,119	11,726	-35.3%
Small Claims	2,115	4,687	14,689 ^a	13,090	3,959	-69.8%
Total	16,134	21,638	43,916	38,636	22,256	-42.4%
Criminal Division^b						
D.C. Misdemeanors	296	311	504	968 ^a	805	-16.8%
Felony	2,556	2,482	2,480	1,840 ^a	1,716	-6.7%
Special Proceedings	142	133	174	na	na	na
Traffic	1,075	820	1,013	2,494 ^a	2,476	-0.7%
U.S. Misdemeanors	2,265	2,422	1,993	2,672 ^a	2,738	2.5%
Total	6,334	6,168	6,164	7,974	7,735	-3.0%
Domestic Violence Unit^c						
Intrafamily	265	187	177	249	211	-15.3%
Paternity & Child Support	70	80	55	81	na	na
U.S. Misdemeanors	838	745	803	477	834	74.8%
Total	1,173	1,012	1,035	807	1,045	na
Family Court Operations^c						
Abuse & Neglect	4,184	3,414	3,189 ^a	2,714 ^a	2,519	-7.2%
Adoption	842	507	336	279 ^a	278	-0.4%
Divorce/Custody/Misc.	2,256	2,187	2,134 ^a	2,202 ^a	2,533	15.0%
Juvenile	670	1,015	572 ^a	878 ^a	737	-16.1%
Mental Health	112	228	397 ^a	486 ^a	441	-9.3%
Mental Retardation	1,184	1,189	1,232	1,244 ^a	1,254	0.8%
Paternity & Child Support	6,497	3,863	5,231 ^a	6,608 ^a	7,032	6.4%
Total	15,745	12,403	13,091	14,411	14,794	2.7%
Probate Division						
Conservatorships	292	244	215	195	132	-32.3%
Foreign Proceedings	-	-	-	-	11	-
Formal Probate	4,289	3,784	2,498	1,115	680	-39.0%
Guardianships	350	231	169	126	51	-59.5%
Interventions	1,861	1,907	2,036	2,264	2,472	9.2%
Small Estates	138	107	86	45	45	-
Trusts	278	287	308	319	344	7.8%
Total	7,208	6,560	5,312	4,064	3,735	-8.1%
Tax Division						
Civil Cases	397	431	437	423 ^a	353	-16.5%
Criminal Cases	15	22	36	6 ^a	8	33.3%
Total	412	453	473	429	361	-15.9%
Grand Total	47,006	48,234 ^a	69,991	66,321 ^a	49,926	-24.7%
Monthly Average	3,917	4,020	5,833	5,527 ^a	4,161	-24.7%

^aFigure adjusted after an audit of the caseload.

^bBeginning in CY 2006, cases that are "not papered" (where no formal charges were filed by the prosecutor) are no longer included in filings and resolutions.

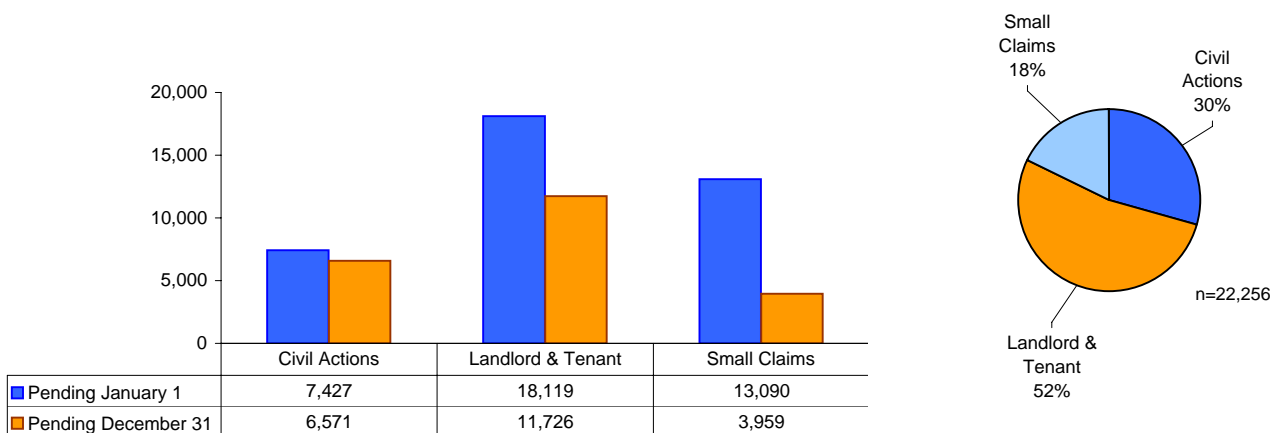
^cBeginning CY 2007, Paternity and Child Support case activity, formerly reported in the Domestic Violence Unit, is reported in Family Court Operations.

CIVIL DIVISION CASE ACTIVITY FOR 2007

	Civil Actions	Landlord & Tenant	Small Claims	Total
Pending Jan. 1	7,427	18,119	13,090	38,636
Filings/Assignments	8,662	46,082	12,087	66,831
Reactivated/Reopened	813	467	248	1,528
Total Available for Resolution	16,902	64,668	25,425	106,995
Methods of Resolution:				
Settled/Dismissed	3,520	1,095	3,028	7,643
Dismissed by Plaintiff/Parties	-	4,723	-	4,723
Dismissed re: Bulk Filing by FAX/email	-	20,222	-	20,222
Dismissed by Court	1,025	1,820	556	3,401
Dismissed Rule 41	559	4	-	563
Dismissed Rule 4(m)/4(o)	1,374	-	11,102	12,476
Default Judgment	727	10,186	4,416	15,329
Judgments/Consents/Confession	167	6,958	1,137	8,262
Ex part Proof-Affidavit	414	-	613	1,027
Removed to Federal Court	148	-	4	152
Dispositive Motions	427	77	-	504
Jury Trials	214	3	1	218
Non-Jury Trials	111	104	253	468
Summary Proceedings	1,142	-	-	1,142
Agency Review/Appeal	84	-	-	84
Settled During Trial	8	10	58	76
Mediation Agreement Approved	-	323	-	323
Non-Redeemable Judg./Plntf for Poss.	-	479	-	479
Judgment for Possession	-	1,198	-	1,198
Plea of Title	-	29	-	29
Other	411	5,711	298	6,420
Total Resolutions	10,331	52,942 ^a	21,466 ^a	84,739
Pending Dec. 31	6,571	11,726	3,959	22,256
Percent Change in Pending	-11.5%	-35.3%	-69.8%	-42.4%
Clearance Rate ^a	109.0%	na	na	na

^aThe case resolution figures for the Civil Division's Landlord & Tenant and Small Claims & Conciliation Branches include cases administratively closed as a result of data verification activities due to the conversion to the Court's integrated justice information system. Accordingly, the calculation of clearance rates for these caseloads and the Division's overall caseload would not be appropriate. Clearance rates will be provided beginning in CY 2008.

CIVIL DIVISION PENDING CASELOAD, 2007



CRIME VICTIMS COMPENSATION PROGRAM, 2006-2007

	2006	2007	% Change 2006-2007
Claims Filed	2,399	2,522	5.1%
Payments For Services	8,476	11,014	29.9%
Amount Awarded To Victims	\$ 7,491,308	\$ 8,389,591	12.0%
Average Amount Awarded Per Claim	\$ 3,126	\$ 3,327	6.4%

CRIMINAL DIVISION CASE ACTIVITY FOR 2007

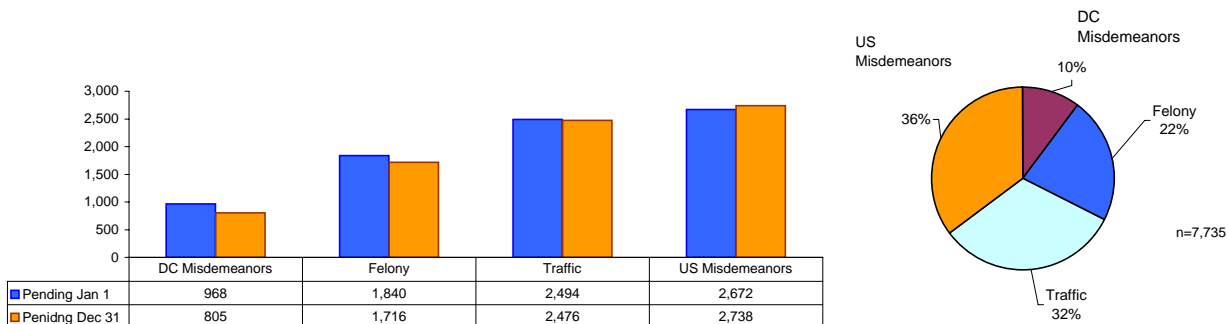
	D.C.			U.S.	
	Misdemeanors	Felony	Traffic	Misdemeanors	Total
Pending Jan. 1 ^a	968	1,840	2,494	2,672	7,974
Filings	<u>3,115</u>	<u>5,256</u>	<u>8,845</u>	<u>10,687</u>	<u>27,903</u>
Total Available for Resolution ^b	4,083	7,096	11,339	13,359	35,877
Method of Resolution					
Non-trial:					
Guilty Plea	646	3,285	3,770	4,288	11,989
Nolle Prosequi	880	56	1,333	1,449	3,718
Nolle Diversion	383	16	1,624	1,152	3,175
DWP	106	388	255	1,345	2,094
Dismissal	43	1,367	101	1,662	3,173
Other/Abatement	-	26	5	15	46
Security Forfeited	1,054	-	549	-	1,603
Total Non-Trial	3,112	5,138	7,637	9,911	25,798
Trial:					
Jury:					
Guilty Verdict	4	229	4	9	246
Not Guilty Verdict	3	101	2	19	125
Acquittal	-	2	1	2	5
Mistrial/Hung Jury	-	61	-	-	61
Total Jury Trials	7	393	7	30	437
Bench:					
Guilty Judgment	92	47	85	437	661
Not Guilty Judgment	14	12	27	120	173
Acquittal	6	5	5	25	41
Not Guilty by Reason of Insanity	-	-	-	-	-
Total Bench Trials	112	64	117	582	875
Total Resolutions	3,231	5,534	7,761	10,523	27,049
Pending Dec. 31 ^c	805	1,716	2,476	2,738	7,735
Percent Change in Pending	-16.8%	-6.7%	-0.7%	2.5%	-3.0%
Clearance Rate ^b	na	na	na	na	na

^aPending figures adjusted after an audit of the caseload.

^bCases available for resolution for the Criminal Division may be subject to adjustment in the future as a result of ongoing data verification activities due to the conversion to the Court's integrated justice information system. Accordingly, the calculation of clearance rates for these caseloads and the Division's overall caseload would not be appropriate.

^cAs a result of the conversion to the Court's integrated justice information system, the number of reactivated/reopened cases cannot be reported separately but they are included in the number of cases available for resolution.

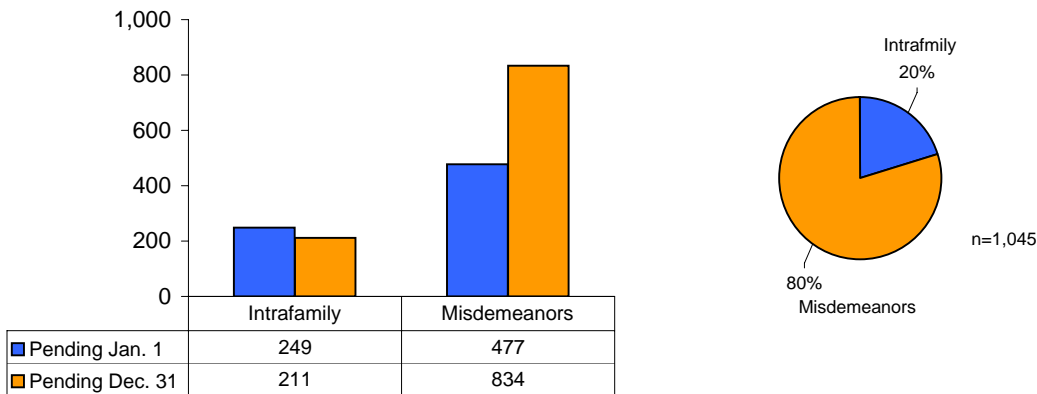
CRIMINAL DIVISION PENDING CASELOAD, 2007



DOMESTIC VIOLENCE UNIT CASE ACTIVITY FOR 2007^a

	Intrafamily	Misdemeanors	Total
Pending Jan. 1	249	477	726
Filings	3,863	2,880	6,743
Reactivated/Reopened	281	543	824
Total Available for Resolution	4,393	3,900	8,293
Method of Resolution			
Prior to Court Adjudication	-	757	757
Court Adjudications	4,182	2,309	6,491
Total Resolutions	4,182	3,066	7,248
Pending Dec. 31	211	834	1,045
Percent Change in Pending	-15.3%	74.8%	43.9%
Clearance Rate	100.9%	89.6%	95.8%

DOMESTIC VIOLENCE PENDING CASELOAD, 2007

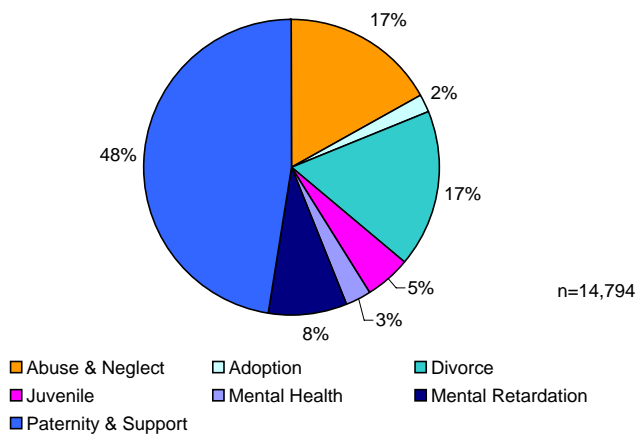
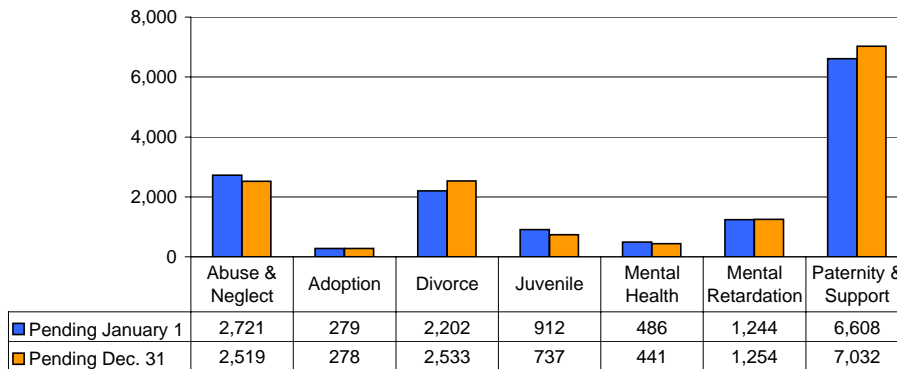


FAMILY COURT OPERATIONS CASE ACTIVITY FOR 2007

	Abuse & Neglect	Adoption	Divorce	Juvenile	Mental Health	Mental Retardation	Paternity & Child Support	Total
Pending Jan. 1	2,721 ^a	279	2,202	912 ^a	486	1,244	6,608	14,452
Filings	532	250	3,641	3,123	1,250	26	3,917	12,739
Reopened	26	-	-	17	68	-	568	679
Total Available for Resolution	3,279	529	5,843	4,052	1,804	1,270	11,093	27,870
Resolutions	760	251	3,310	3,315	1,363	16	4,061	13,076
Pending Dec. 31	2,519	278	2,533	737	441	1,254	7,032	14,794
Percent Change in Pending	-7.4%	-0.4%	15.0%	-19.2%	-9.3%	0.8%	6.4%	2.4%
Clearance Rate	136.2%	100.4%	90.9%	105.6%	103.4%	61.5%	90.5%	97.5%

^aFigure adjusted after an audit of the caseload.

FAMILY COURT OPERATIONS PENDING CASELOAD, 2007



SOCIAL SERVICES DIVISION ACTIVITY FOR 2007

	Pending Jan. 1	New Cases/Clients	Total	Closed	Cases Pending Dec. 31	% Change Pending 2006 - 2007
Intake						
Active Clients ^a	-	994	994	994	-	-
New Clients	7	2,050	2,057	2,027	30	328.6%
Diversion	18	24	42	32	10	-44.4%
Total	25	3,068	3,093	3,053	40	60.0%
Juvenile Drug Court	22	79	101	53	48	118.2%
Supervision						
Domestic Relations ^b	16	83	99	80	19	18.8%
LOTS ^c	272	472	744	566	178	-34.6%
Probation Supervision ^d	1,198	3,098	4,296	3,149	1,147	-4.3%
UTURN ^e	112	178	290	240	50	-55.4%
Total	1,598	3,831	5,429	4,035	1,394	-12.8%
Total Pending Clients^f	1,645	na	na	na	1,482	-9.9%

^aIndividuals who are arrested in a new case but are already under Court supervision.

^bJudicial referrals to a probation officer to conduct a home study to determine custody matters.

^cPre- and post adjudication supervision unit designed for girls entitled "Leaders of Today in Solidarity" (LOTS).

^dIncludes probation, interstate compact and consent decree cases. Also includes 451 cases previously reported as juvenile diagnostic cases in CY 2006. Beginning in CY 2007, juvenile diagnostic cases are included under probation supervision where, for continuity of service, a probation officer is assigned to a juvenile at intake and continues with the case through the adjudication process and probation supervision, as appropriate.

^eIntensive supervision unit entitled "Ultimate Transitions Ultimate Responsibilities Now" (UTURN).

^fClients may move from intake to supervision status within a reporting period, therefore, to avoid double counting, only totals for pending cases are provided.

MULTI-DOOR DISPUTE RESOLUTION DIVISION

CIVIL ALTERNATIVE DISPUTE RESOLUTION ACTIVITY, 2003-2007

	2003	2004	2005	2006	2007 ^a
Arbitration					
Cases Referred	32	5	3	2	na
Cases Scheduled	na	na	na	na	4
Cases Closed	38	12	2	4	na
Cases Arbitrated	na	na	na	na	4
Cases Settled	20	3	2	4	2
Settlement Rate ^b	53%	25%	100%	100%	50%
Civil Mediation					
Cases Referred	2,906	2,838	3,184	3,640	na
Cases Scheduled	na	na	na	na	4,041
Cases Closed	2,160	2,272	2,258	2,862	na
Cases Mediated	na	na	na	na	1,282
Cases Settled	727	767	576	718	307
Settlement Rate ^b	41%	34%	38%	25%	23%
Special Civil Mediation^c					
Cases Referred	116	135	300	164	na
Cases Scheduled	na	na	na	na	246
Cases Closed	99	132	198	140	na
Cases Mediated	na	na	na	na	120
Cases Settled	37	82	110	68	32
Settlement Rate ^b	37%	58%	52%	43%	27%
Landlord and Tenant					
Cases Referred	445	570	678	957	na
Cases Scheduled	na	na	na	na	1,180
Cases Closed	445	570	654	758	na
Cases Mediated	na	na	na	na	938
Cases Settled	350	390	465	499	530
Settlement Rate ^b	79%	68%	71%	64%	57%
Probate					
Cases Referred	11	32	61	114	na
Cases Scheduled	na	na	na	na	98
Cases Closed	22	24	38	46	na
Cases Mediated	na	na	na	na	56
Cases Settled	10	8	20	9	11
Settlement Rate ^b	45%	33%	50%	17%	20%
Small Claims					
Cases Referred	1,479	1,466	1,178	1,258	na
Cases Scheduled	na	na	na	na	1,151
Cases Closed	1,479	1,466	1,144	1,196	na
Cases Mediated	na	na	na	na	1,121
Cases Settled	581	700	485	544	507
Settlement Rate ^b	39%	48%	42%	46%	45%
Tax					
Cases Referred	127	147	292	288	na
Cases Scheduled	na	na	na	na	260
Cases Closed	103	150	173	119	na
Cases Mediated	na	na	na	na	184
Cases Settled	50	56	57	62	31
Settlement Rate ^b	49%	37%	33%	53%	17%

^aIn CY 2007, the categories of "cases referred" and "cases closed" were changed to "cases scheduled" and "cases mediated or arbitrated" respectively. Because these categories are not comparable to previous years, the calculation of percentage change is not meaningful for CY 2007.

^bSettlements reached as a percentage of the number of mediations/arbitrations completed.

^cCases expedited for mediation at the scheduling conference.

FAMILY ALTERNATIVE DISPUTE RESOLUTION ACTIVITY, 2003-2007

	2003	2004	2005	2006	2007 ^a
Child Protection					
Cases Referred	390	396	481	353	na
Cases Scheduled	na	na	na	na	312
Cases Closed	414	388	480	372	na
Cases Mediated	na	na	na	na	227
Cases Settled	338	289	363	266	121
Settlement Rate ^b	92%	89%	92%	94%	94%
Family					
Cases Referred	532	439	354	379	na
Cases Scheduled	na	na	na	na	691
Cases Closed	295	352	313	372	na
Cases Settled	110	142	88	101	172
Settlement Rate ^b	37%	41%	34%	38%	40%

^aIn CY 2007, the categories of "cases referred" and "cases closed" were changed to "cases scheduled" and "cases mediated" respectively. Because these categories are not comparable to previous years, the calculation of percentage change is not meaningful for CY 2007.

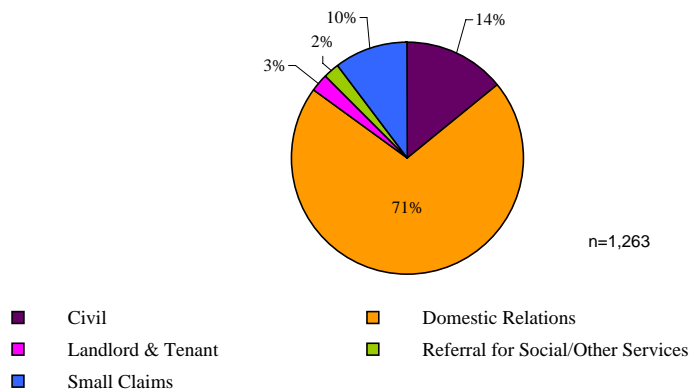
^bSettlements reached as a percentage of the number of mediations completed.

COMMUNITY INFORMATION & REFERRALS BY TYPE OF DISPUTE, 2007

	2003	2004	2005	2006	2007	% Change 2006 - 2007
Community Information & Referral Program Activity						
Number of Clients Assisted	2,609	1,846	1,504	1,475	2,097	42.2%
Type of Dispute						
Civil	128	162	177	171	180	5.3%
Domestic Relations	817	565	475	464	892	92.2%
Landlord & Tenant	52	26	25	27	34	25.9%
Referral for Social/Other Services	193	324	173	171	26	-84.8%
Small Claims	265	247	220	193	131	-32.1%
Other	20	-	-	-	-	-
Total Number of Disputes	1,475	1,324	1,070	1,026	1,263	23.1%
Cases Mediated/Conciliated ^a	169	134	125	106	72	-32.1%
Cases Settled	122	101	97	81	54	-33.3%
Settlement Rate ^b	72%	75%	78%	76%	75%	

^aConciliated cases are typically resolved over the telephone.

^bSettlements reached as a percentage of the number of mediations completed.



OFFICE OF THE AUDITOR-MASTER

AUDITOR MASTER CASE ACTIVITY, 2006-2007

	2006	2007
Pending January 1	24	22
New Orders of Reference	31	13
Requirement for Supplemental Reports	4	1
Available for Disposition	59	36
Closed/Reports Issued	37	20
Pending December 31	22	16
Clearance Rate ^a	105.7%	142.9%

^aClearance rate, a measure of court efficiency, is the total number of cases closed/reports issued divided by the total number of cases added to the caseload (i.e., new orders of reference and requirement for supplemental reports).

PROBATE DIVISION CASE ACTIVITY FOR 2007

	Cases Pending Jan. 1	Cases Filed	Cases Reactivated/ Reopened	Available for Resolution	Cases Resolved	Cases Pending Dec. 31	% Change in Pending 2006 - 2007
Conservatorships (Old Law) ^a	195	-	-	195	63	132	-32.3%
Foreign Proceedings	-	118	-	118	107	11	na
Formal Probate (Decedent's Estates)	1,115	1,381	100	2,596	1,916	680	-39.0%
Guardianships (of Minors)	126	29	-	155	104	51	-59.5%
Intervention Proceedings (Adult Guardianships/ Conservatorships)	2,264	425	-	2,689	217	2,472	9.2%
Small Estates	45	615	29	689	644	45	-
Trusts	319	38	-	357	13	344	7.8%
Total	4,064	2,606	129	6,799	3,064	3,735	-8.1%

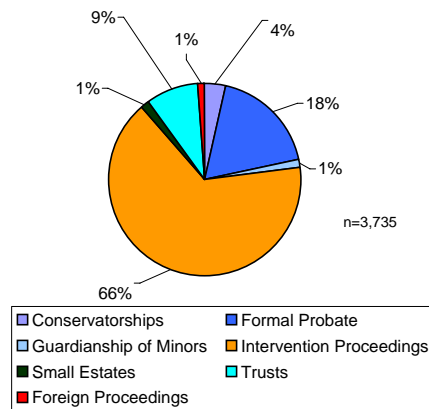
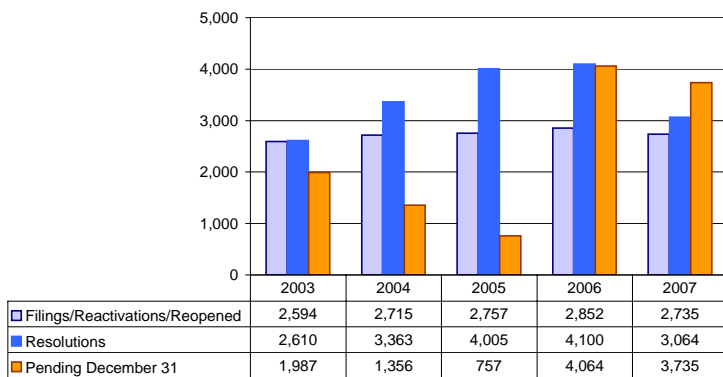
^aConservatorships (Old Law) refers to conservatorships created prior to 1989, which provided for only the management of assets of the ward. Beginning September 30, 1989, intervention proceedings filed were governed by the 300 rule series and D.C. Code 21-2001 through 2085 and termed "Intervention Proceedings" or "Adult Guardianships/Conservatorships."

ACCOUNT and FEE ACTIVITY, 2003-2007

	2003	2004	2005	2006	2007	% Change 2006 - 2007
Accounts Filed	2,163	2,060	1,995	1,675	1,600	-4.5%
Accounts Resolved	2,109	2,367	2,357	1,812 ^a	1,548	-14.6%
Petition for Compensation Request Filed	1,253	1,381	1,354	1,468	1,671	13.8%
Petition for Compensation Request Resolved	1,246	1,388	1,304	1,401	1,589	13.4%

^aIn CY 2006, special efforts in the Auditing Branch to streamline workflow processes resulted in a 62% reduction in the caseload available for disposition and the disposition of 7.5% more accounts than were filed.

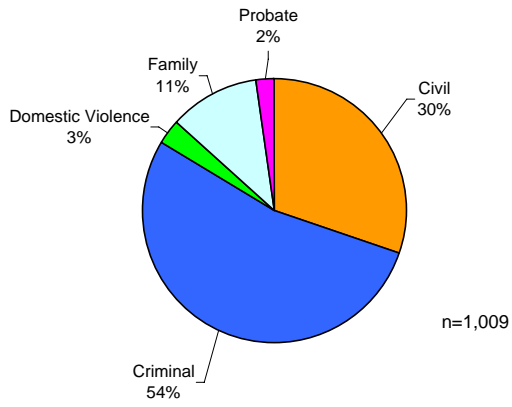
PROBATE DIVISION CASE ACTIVITY, 2003-2007 and PENDING CASELOAD, 2007



SPECIAL OPERATIONS DIVISION

APPEALS COORDINATORS' OFFICE

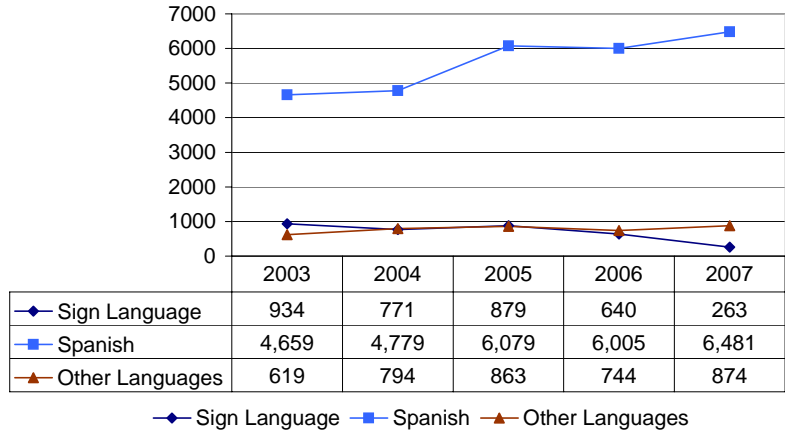
Type of Superior Court Cases Appeals to the D.C. Court of Appeals, 2007



SPECIAL OPERATIONS DIVISION

OFFICE OF COURT INTERPRETING SERVICES

Number of Court Events^a Requiring Interpreters, 2003-2007^b



^aThere may be multiple court events requiring interpreters services in a single case.

^bForeign language services are provided for all criminal and family matters, for probate and civil matters if the party is adjudicated as indigent, or as a directive from the judge. Sign language services are provided for all deaf and hard of hearing individuals.

SPECIAL OPERATIONS DIVISION

PETIT JUROR ACTIVITY, 2003-2007

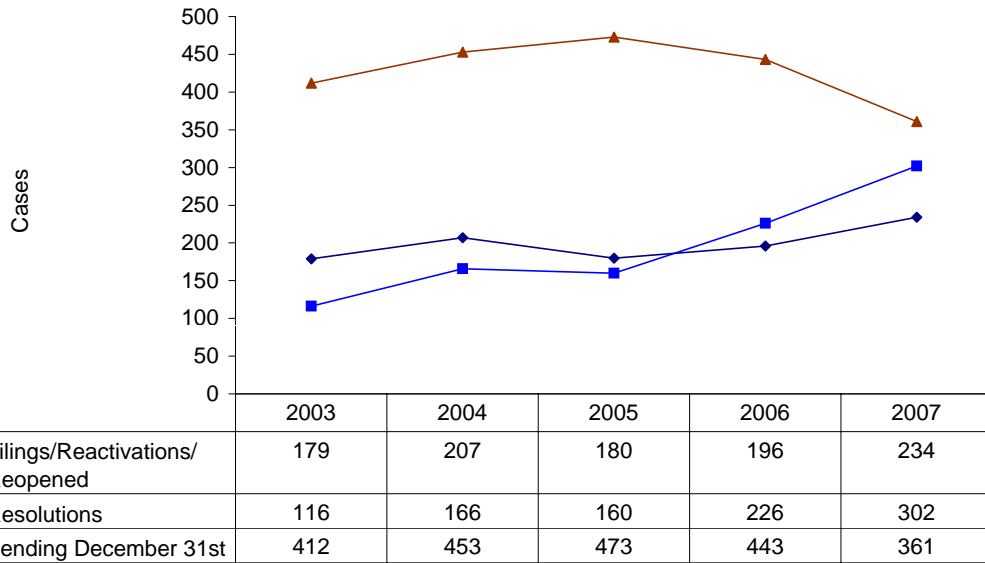
Juror Utilization

	2003		2004		2005		2006		2007	
	Total	Daily Average	Total	Daily Average	Total	Daily Average	Total	Daily Average	Total	Daily Average
Jurors Reporting for Service	46,318	236	42,192	228	45,013	234	56,465	291	47,670	254
Jurors Sent to Voir Dire	35,366	180	35,720	193	34,046	177	31,140	162	34,341	183
Jurors Selected For Panels	7,852	40	7,826	42	7,670	40	6,783	35	7,531	40
Juror Utilization Rate ^a	76%		85%		76%		55%		72%	

^aA measure of efficiency in which the number of prospective jurors who are sent at least once for the Voir Dire process is expressed as a percentage of the number of jurors who are qualified and report for service.

SPECIAL OPERATIONS DIVISION

TAX DIVISION CASE ACTIVITY, 2003-2007



	2003	2004	2005	2006	2007
◆ Filings/Reactivations/Reopened	179	207	180	196	234
■ Resolutions	116	166	160	226	302
▲ Pending December 31st	412	453	473	443	361

TRANSCRIPT PRODUCTION FROM REPORTERS, 2003-2007

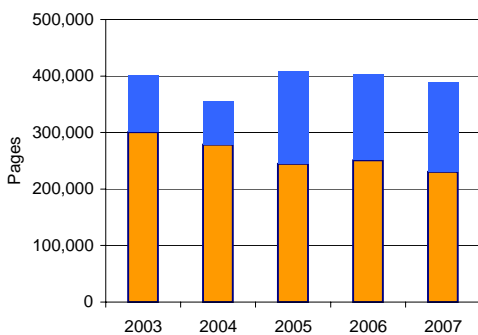
	2003	2004	2005	2006	2007	% Change 2006 - 2007
Pages Produced by Court Reporters:						
Appeal Pages	167,384	177,002	152,054	135,818	130,794	-3.7%
Non-Appeal Pages	133,453	101,842	92,322	115,039	99,626	-13.4%
Total	300,837	278,844	244,376	250,857	230,420	-8.1%
Ratio of Appeal Pages to Total Pages Produced	55.7	63.5	62.2	54.1	56.8	5.0%
Transcript Orders Pending December 31						
	637	305	545	412	334	-18.9%
Average Number of Days to Complete						
Appeal	38	61	50	41	39	-4.9%
Non-Appeal	na	na	na	62	60	-3.2%
	na	na	na	20	18	-10.0%

TRANSCRIPT PRODUCTION FROM RECORDINGS, 2003-2007

	2003	2004	2005	2006	2007	% Change 2006 - 2007
Pages Produced by Court Transcribers:						
Appeal Pages	7,020	8,309	10,819	8,762	5,314	-39.4%
Non-Appeal Pages	21,890	24,041	19,713	24,329	18,478	-24.0%
Total	28,910	32,350	30,532	33,091	23,792	-28.1%
Pages Produced by Contract Transcription Services:						
Appeal Pages	36,730	21,338	67,402	58,235	55,543	-4.6%
Non-Appeal Pages	33,892	23,311	65,587	60,396	79,182	31.1%
Total	70,622	44,649	132,989	118,631	134,725	13.6%
Total	99,532	76,999	163,521	151,722	158,517	4.5%
Transcript Orders Pending December 31						
	148	404	143	136	407	199.3%
Average Number of Days to Complete						
Appeal	120	41	48	24	28	16.7%
Non-Appeal	na	na	na	27	32	18.5%
	na	na	na	21	24	14.3%

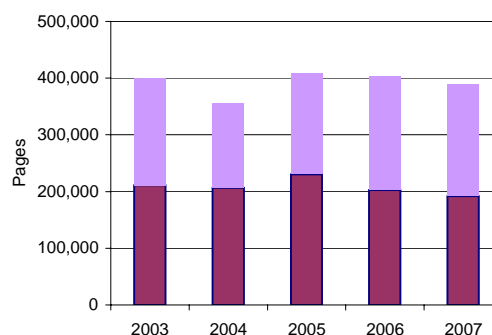
TRANSCRIPT PRODUCTION, 2003-2007

By Source



By Court Reporters From Recordings

By Type*



Appeal Pages Non-Appeal Pages

*In CY 2007, transcripts were produced for 770 appeal cases, resulting in 197,499 pages, representing a 38% decline in pages produced for appeal from CY 2006.

MISSION STATEMENT

To protect rights and liberties, uphold and interpret the law, and resolve disputes peacefully, fairly and effectively in the Nation's Capital.



District of Columbia Courts
500 Indiana Avenue, N.W.
Washington, D.C. 20001
(202) 879-1700
www.dccourts.gov