

Traffic Safety Facts

2006 Data

DOT HS 810 808
(Updated March 2008)

Older Population

"In 2006, older people accounted for 14 percent of all traffic fatalities and 19 percent of all pedestrian fatalities."

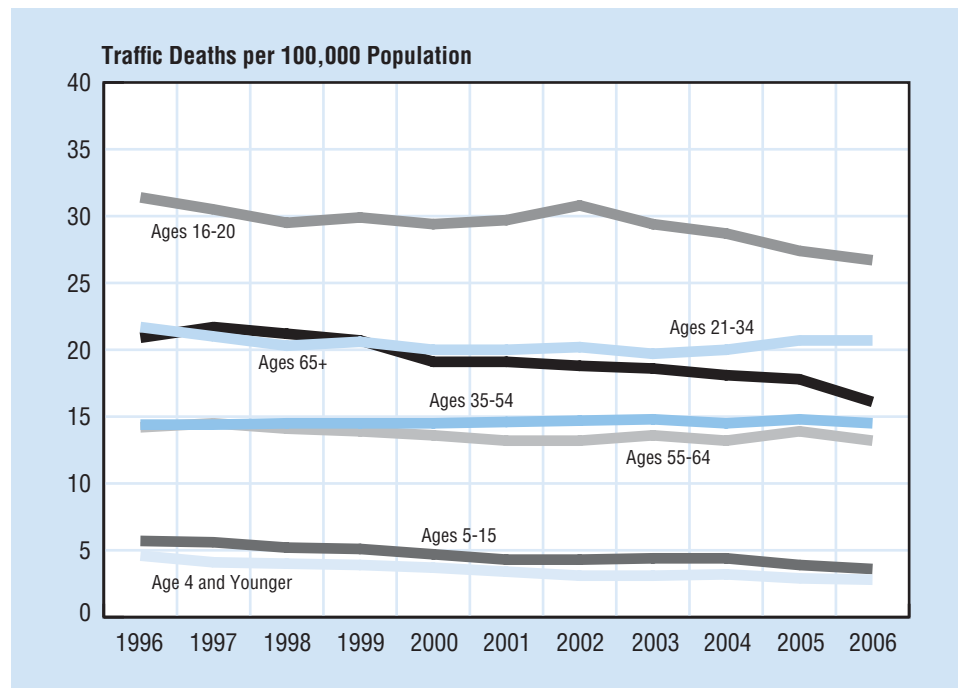
In 2006, 12 percent of the total U.S. resident population (37 million) were people age 65 and older.

There were 30 million older licensed drivers in 2006 — a 18-percent increase from 1996. In contrast, the total number of licensed drivers increased by only 13 percent from 1996 to 2006. Older drivers made up 15 percent of all licensed drivers in 2006, compared with 14 percent in 1996.

In 2006, 202,000 older individuals were injured in traffic crashes, accounting for 8 percent of all the people injured in traffic crashes during the year. These older individuals made up 14 percent of all traffic fatalities, 14 percent of all vehicle occupant fatalities, and 19 percent of all pedestrian fatalities.

Most traffic fatalities involving older drivers in 2006 occurred during the daytime (81%), on weekdays (72%), and involved other vehicles (72 %).

Figure 1
Motor Vehicle Traffic Fatality Rates by Age Group, 1996-2006



Of all adult drivers, older drivers involved in fatal crashes had the lowest proportion of total drivers with blood alcohol concentrations (BAC) of .08 grams per deciliter (g/dL) or higher. Among all fatally injured adult pedestrians, older pedestrians also had the lowest proportion of total drivers with BAC of .08 g/dL or higher.

Table 1
Age and Alcohol, 2006

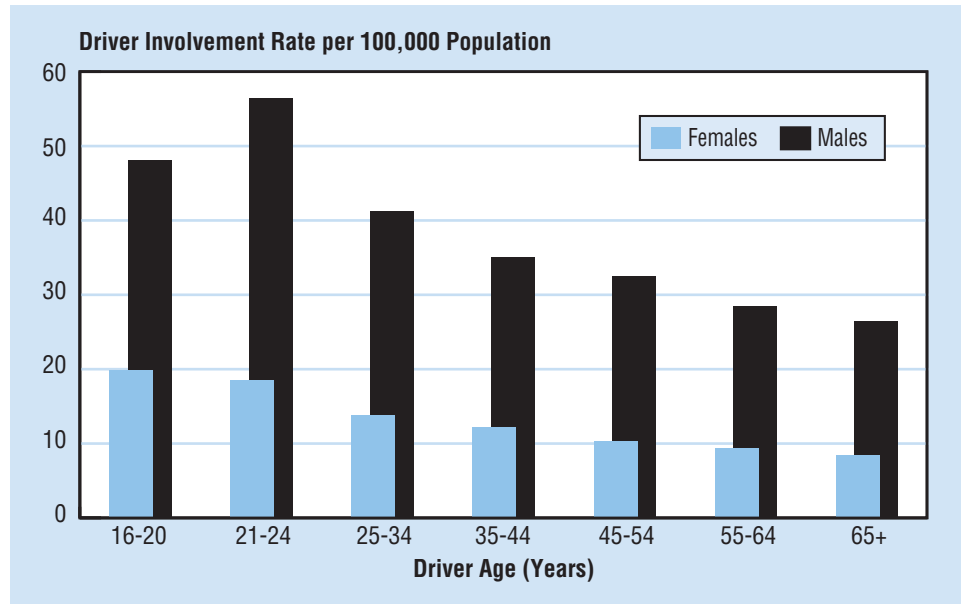
Age Group (Years)	Drivers Involved in Fatal Crashes			Pedestrian Fatalities		
	Total	BAC ≥ .08 g/dL		Total	BAC ≥ .08 g/dL	
		Number	Percent of Total		Number	Percent of Total
<16	275	37	14	369	14	4
16-20	7,286	1,350	19	274	77	28
21-34	17,677	5,404	31	905	463	51
35-54	19,511	4,341	22	1,703	817	48
55-64	5,864	753	13	567	161	28
65+	5,976	369	6	904	90	10
Total	*57,695	12,491	22	**4,784	1,649	34

*Includes 1,106 drivers of unknown age.

**Includes 62 pedestrian fatalities of unknown age.

“Older drivers involved in fatal crashes in 2006 had the lowest proportion of intoxication of all adult drivers.”

Figure 2
Driver Involvement Rates in Fatal Crashes by Age and Sex, 2006



Over three-fourths (76%) of all older occupants of passenger vehicles involved in fatal crashes were using restraints at the time of the crash, compared to 62 percent for other adult occupants (18 to 64 years old).

For older people, 67 percent of pedestrian fatalities in 2006 occurred at non-intersection locations. For other pedestrians, 81 percent of fatalities occurred at non-intersection locations. In two-vehicle fatal crashes involving an older driver and a younger driver, the vehicle driven by the older person was nearly twice as likely to be the one that was struck (61% and 32%, respectively). In 45 percent of these crashes, both vehicles were proceeding straight at the time of the collision. In 25 percent, the older driver was turning left — 5 times more often than the younger driver.

“In two-vehicle fatal crashes with an older and a younger driver, the older driver’s vehicle was nearly twice as likely to be the one that was struck.”

Table 2
Involvement of the Older Population in Traffic Fatalities, 1996 and 2006

	1996			2006			Percentage Change, 1996-2006		
	Total	Age 65+	Percentage of Total	Total	Age 65+	Percentage of Total	Total	Age 65+	Percentage Age 65+
Population (thousands)									
Total	265,229	33,957	12.8	299,398	37,260	12.4	13	10	-2.8
Male	129,504	13,921	10.7	147,512	15,657	10.6	14	12	-1.3
Female	135,724	20,036	14.8	151,886	21,603	14.2	12	8	-3.7
Drivers Involved in Fatal Crashes									
Total	57,001	6,387	11.2	57,695	5,976	10.4	1	-6	-7.6
Male	41,376	4,432	10.7	41,975	4,131	9.8	1	-7	-8.1
Female	14,850	1,955	13.2	14,655	1,829	12.5	-1	-6	-5.2
Driver Fatalities									
Total	24,534	4,030	16.4	27,323	3,735	13.7	11	-7	-16.8
Male	17,875	2,728	15.3	20,656	2,533	12.3	16	-7	-19.6
Female	6,657	1,302	19.6	6,569	1,187	18.1	-1	-9	-7.6
Total Traffic Fatalities									
Total	42,065	7,113	16.9	42,642	6,017	14.1	1	-15	-16.6
Male	28,061	3,986	14.2	29,722	3,518	11.8	6	-12	-16.7
Female	13,991	3,126	22.3	12,747	2,472	19.4	-9	-21	-13.2
Occupant Fatalities									
Total	35,695	5,836	16.3	36,902	4,980	13.5	3	-15	-17.5
Male	23,526	3,204	13.6	25,607	2,901	11.3	9	-9	-16.8
Female	12,158	2,631	21.6	11,155	2,059	18.5	-8	-22	-14.7
Pedestrian Fatalities									
Total	5,449	1,210	22.2	4,784	904	18.9	-12	-25	-14.9
Male	3,780	725	19.2	3,309	509	15.4	-12	-30	-19.8
Female	1,667	485	29.1	1,444	388	26.9	-13	-20	-7.6

Older Population Age Groups

The following table and graphs provide data for subgroups of the older population: 65-69, 70-74, 75-79, 80-84, and 85+ years.

Table 3
Driver Involvement in Fatal Crashes and Pedestrian Fatalities in the Older Population by Age Group, 2006

	65-69	70-74	75-79	80-84	85+	Total
Drivers Involved in Fatal Crashes	1,711	1,311	1,234	1,006	714	5,976
Pedestrian Fatalities	202	172	215	187	128	904

Figure 3
Motor Vehicle Traffic Fatality Rates in the Older Population by Age Group, 1996-2006

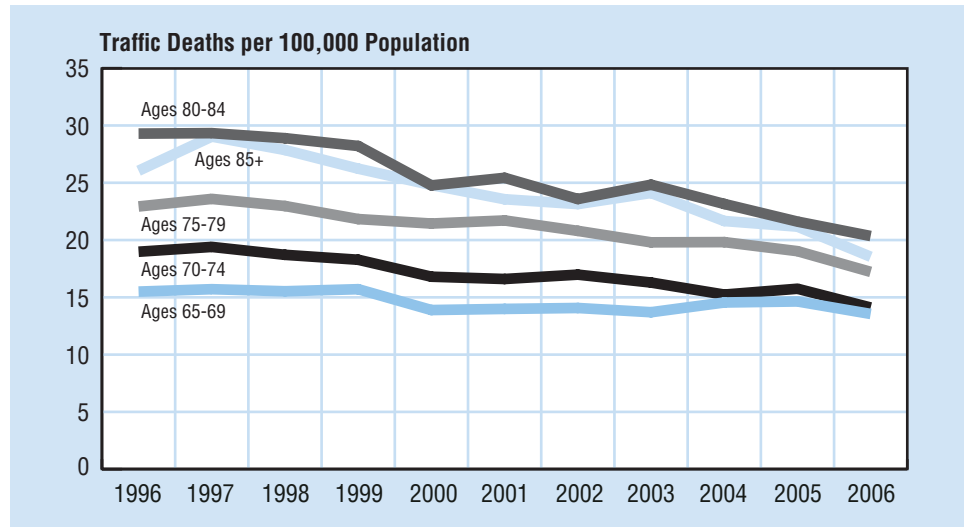
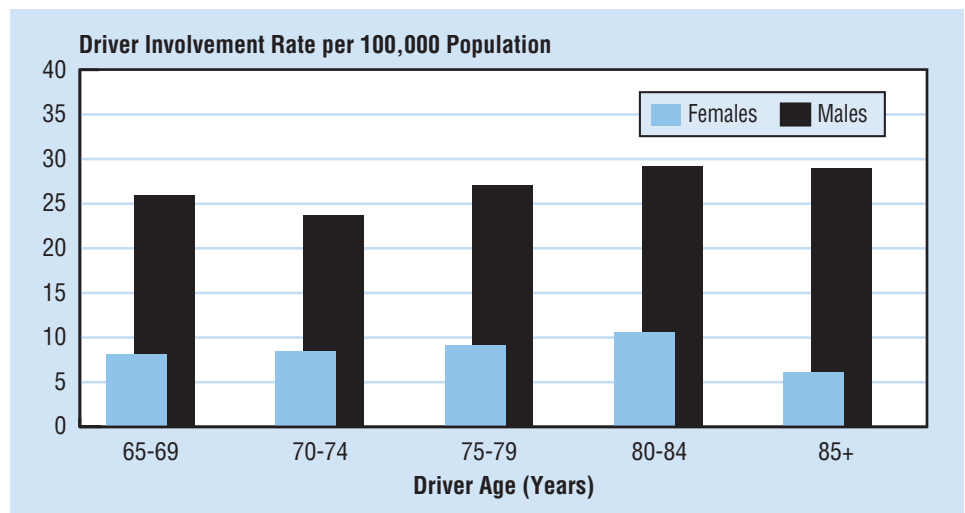


Figure 4
Involvement Rates for Older Drivers in Fatal Crashes by Age Group and Sex, 2006



For more information:

Information on traffic fatalities is available from the National Center for Statistics and Analysis, NVS-421, 1200 New Jersey Avenue SE., Washington, DC 20590. NCSA can be contacted on 800-934-8517. Fax messages should be sent to 202-366-7078. General information on highway traffic safety can be accessed by Internet users at www.nhtsa.gov/portal/site/nhtsa/nca. To report a safety-related problem or to inquire about motor vehicle safety information, contact the Vehicle Safety Hotline at 888-327-4236.

Other fact sheets available from the National Center for Statistics and Analysis are *Overview, Alcohol, African American, Bicyclists and Other Cyclists* (formerly titled *Pedalcyclists*), *Children, Hispanic, Large Trucks, Motorcycles, Occupant Protection, Pedestrians, Race and Ethnicity, Rural/Urban Comparisons, School Transportation-Related Crashes, Speeding, State Alcohol Estimates, State Traffic Data, and Young Drivers*. Detailed data on motor vehicle traffic crashes are published annually in *Traffic Safety Facts: A Compilation of Motor Vehicle Crash Data from the Fatality Analysis Reporting System and the General Estimates System*. The fact sheets and annual Traffic Safety Facts report can be accessed online at www-nrd.nhtsa.dot.gov/CMSWeb/index.aspx.

Table 4

Driver Involvement in Fatal Traffic Crashes by State and Age Group, 2006

State	Total	Total 65+	Percentage of Total	Age Group (Years)								
				<16	16-20	21-34	35-54	55-69	70-74	75-79	80-84	85+
Alabama	1,584	148	9.3	13	217	490	540	209	25	27	27	20
Alaska	108	5	4.6	1	16	30	42	15	1	2	0	1
Arizona	1,708	150	8.8	6	218	526	542	221	34	28	29	18
Arkansas	885	78	8.8	7	120	258	304	137	17	20	14	4
California	5,768	468	8.1	19	706	1,865	1,984	687	99	89	86	53
Colorado	721	64	8.9	4	95	209	257	108	16	13	6	5
Connecticut	435	43	9.9	0	58	133	145	58	7	9	9	8
Delaware	206	24	11.7	0	22	57	89	18	4	10	3	1
District of Columbia	49	1	2.0	0	4	14	17	5	0	1	0	0
Florida	4,838	547	11.3	13	584	1,537	1,563	621	120	124	77	76
Georgia	2,422	257	10.6	15	283	745	828	346	63	44	39	23
Hawaii	203	12	5.9	4	19	77	71	20	5	1	2	1
Idaho	332	40	12.0	4	49	95	97	57	7	9	7	7
Illinois	1,729	163	9.4	7	229	535	586	215	34	29	33	19
Indiana	1,244	130	10.5	1	178	358	434	186	21	22	14	20
Iowa	582	94	16.2	1	76	142	204	82	19	25	16	14
Kansas	626	95	15.2	10	74	184	190	96	20	25	14	12
Kentucky	1,263	153	12.1	8	160	377	445	158	37	28	32	12
Louisiana	1,329	90	6.8	7	169	452	467	143	25	19	12	9
Maine	246	38	15.4	1	37	62	80	39	5	6	9	7
Maryland	935	105	11.2	0	107	294	314	126	24	23	18	11
Massachusetts	568	59	10.4	1	67	182	175	80	13	15	14	7
Michigan	1,513	188	12.4	11	172	424	521	215	43	42	39	26
Minnesota	684	85	12.4	5	102	188	214	109	16	17	17	10
Mississippi	1,156	101	8.7	15	144	387	402	133	23	28	13	6
Missouri	1,461	163	11.2	9	221	437	468	202	39	26	30	17
Montana	292	40	13.7	4	32	76	104	45	8	5	10	7
Nebraska	330	51	15.5	7	61	94	80	47	16	7	14	4
Nevada	619	47	7.6	1	70	210	209	75	9	12	4	6
New Hampshire	179	24	13.4	0	19	41	75	22	5	9	4	4
New Jersey	1,056	115	10.9	1	106	302	303	122	28	26	15	17
New Mexico	572	42	7.3	5	66	186	206	67	9	9	5	3
New York	1,967	254	12.9	4	223	584	663	267	47	54	48	37
North Carolina	2,114	246	11.6	10	257	631	712	306	56	60	43	18
North Dakota	134	14	10.4	4	22	37	39	24	2	3	1	2
Ohio	1,735	205	11.8	5	223	482	613	235	50	43	32	33
Oklahoma	1,013	99	9.8	7	129	308	352	142	20	17	25	7
Oregon	597	67	11.2	3	68	180	202	98	17	12	5	8
Pennsylvania	2,073	258	12.4	6	256	594	725	272	56	55	47	42
Rhode Island	99	12	12.1	0	14	28	30	16	2	4	0	3
South Carolina	1,387	147	10.6	5	156	431	508	170	38	24	22	13
South Dakota	236	30	12.7	6	29	59	76	45	7	4	8	2
Tennessee	1,721	200	11.6	8	224	528	586	225	40	44	28	21
Texas	4,645	381	8.2	24	616	1,515	1,582	543	86	67	58	48
Utah	364	33	9.1	3	60	125	111	43	4	3	6	4
Vermont	105	20	19.0	0	14	25	34	16	4	2	6	4
Virginia	1,243	142	11.4	4	168	364	404	177	29	46	23	11
Washington	856	72	8.4	1	115	277	291	114	16	10	12	11
West Virginia	547	60	11.0	2	68	168	189	69	18	15	7	6
Wisconsin	962	97	10.1	1	140	301	332	115	22	18	17	14
Wyoming	254	19	7.5	2	23	73	106	34	5	3	6	2
U.S. Total*	57,695	5,976	10.4	275	7,286	17,677	19,511	7,575	1,311	1,234	1,006	714
Puerto Rico	658	43	6.5	3	84	226	202	74	9	11	5	2

*Includes 1,106 drivers of unknown age.

Table 5
Fatalities in Traffic Crashes by State and Age Group, 2006

State	Total	Total 65+	Percentage of Total	Age Group (Years)								
				<16	16-20	21-34	35-54	55-69	70-74	75-79	80-84	85+
Alabama	1,208	125	10.3	75	169	349	384	137	25	17	28	24
Alaska	74	8	10.8	9	6	17	20	16	3	2	0	1
Arizona	1,288	159	12.3	77	182	333	386	179	28	33	37	23
Arkansas	665	71	10.7	39	97	194	186	96	17	20	10	6
California	4,236	564	13.3	229	560	1,199	1,255	559	101	111	119	96
Colorado	535	58	10.8	32	78	151	168	66	15	11	7	7
Connecticut	301	41	13.6	7	52	89	80	35	8	11	8	10
Delaware	148	27	18.2	5	21	33	53	15	6	8	5	2
District of Columbia	37	3	8.1	6	5	12	7	5	0	1	1	0
Florida	3,374	519	15.4	127	391	970	997	468	107	122	83	90
Georgia	1,693	235	13.9	83	219	489	489	245	49	42	41	30
Hawaii	161	26	16.1	7	21	46	46	22	3	8	4	4
Idaho	267	43	16.1	14	37	56	77	51	7	8	9	8
Illinois	1,254	172	13.7	71	178	332	383	154	30	32	40	34
Indiana	899	113	12.6	47	132	230	278	132	14	23	13	29
Iowa	439	104	23.7	16	60	86	125	64	19	27	23	19
Kansas	468	90	19.2	23	59	127	120	74	10	23	17	15
Kentucky	913	140	15.3	48	111	251	283	118	30	33	27	12
Louisiana	982	76	7.7	45	121	332	321	100	16	19	12	12
Maine	188	39	20.7	8	32	41	50	28	3	9	9	8
Maryland	651	92	14.1	21	83	183	202	84	20	19	21	14
Massachusetts	430	72	16.7	13	57	120	105	74	12	20	13	11
Michigan	1,085	178	16.4	55	115	290	332	150	33	36	40	34
Minnesota	494	86	17.4	20	80	133	132	62	15	16	19	17
Mississippi	911	94	10.3	55	106	274	293	111	21	28	14	8
Missouri	1,096	148	13.5	54	186	295	306	138	34	26	35	22
Montana	263	41	15.6	12	31	66	89	32	9	5	10	9
Nebraska	269	52	19.3	28	48	66	50	36	14	8	14	5
Nevada	432	51	11.8	30	43	127	128	58	6	14	13	6
New Hampshire	127	22	17.3	2	16	28	43	17	3	6	6	6
New Jersey	772	134	17.4	27	88	220	228	85	22	31	31	28
New Mexico	484	53	11.0	35	51	148	149	65	11	9	8	6
New York	1,456	291	20.0	57	182	406	365	209	57	62	62	52
North Carolina	1,559	241	15.5	89	194	412	467	209	53	52	52	29
North Dakota	111	16	14.4	13	19	20	29	19	5	3	1	2
Ohio	1,238	204	16.5	54	162	314	366	176	48	42	33	42
Oklahoma	765	106	13.9	53	101	208	219	102	25	21	27	9
Oregon	477	72	15.1	25	61	119	153	70	16	15	6	12
Pennsylvania	1,525	270	17.7	71	197	419	427	190	54	60	46	58
Rhode Island	81	10	12.3	2	9	22	26	16	0	2	1	3
South Carolina	1,037	134	12.9	44	127	299	345	115	34	26	20	17
South Dakota	191	29	15.2	8	25	48	54	37	5	3	8	3
Tennessee	1,287	187	14.5	68	185	346	394	157	45	38	25	27
Texas	3,475	377	10.8	228	457	1,028	1,044	392	82	81	62	60
Utah	287	38	13.2	18	50	81	80	29	6	4	8	8
Vermont	87	17	19.5	2	14	21	23	12	4	1	6	3
Virginia	963	142	14.7	44	147	265	270	123	29	45	24	15
Washington	630	67	10.6	23	102	177	189	88	13	7	15	14
West Virginia	410	58	14.1	16	60	120	114	49	17	11	8	11
Wisconsin	724	104	14.4	27	111	212	204	90	19	19	23	19
Wyoming	195	18	9.2	11	20	66	59	25	2	1	9	2
U.S. Total*	42,642	6,017	14.1	2,173	5,658	11,870	12,593	5,584	1,205	1,271	1,153	982
Puerto Rico	507	70	13.8	13	54	149	139	81	17	18	8	11

*Includes 153 fatalities of unknown age.