

Federal Geographic Data Committee Newsletter

2008 Winter Edition

National Geospatial Advisory Committee (NGAC) FY 2009 Updates

NGAC kicked off their first FY 2009 meeting in October and it was a resounding success. Representatives met at the U.S. Fish and Wildlife Service, National Conservation Training Center in Shepherdstown, WVA. NGAC, which is composed of representatives from governmental, private sector, non-profit and academia, discussed issues to further the successful development of the National Spatial Data Infrastructure (NSDI), and the implementation of OMB Circular A-16. Priority areas of discussion included: Changing Landscapes, Geospatial Transition, National Land Parcel Data Study, Imagery for the Nation, and the Geospatial Line of Business. NGAC will continue in 09 to review and offer recommendations and comments on these priority areas. The next meeting is scheduled for February 4-5, 2009 in Alexandria, VA and is open to the public. For further information regarding these topics and upcoming 09 NGAC meetings, please visit: www.fgdc.gov/ngac/meetings/october-2008/index_html.



Anne Hale Miglarese and Ivan DeLoatch, Staff Director, FGDC.



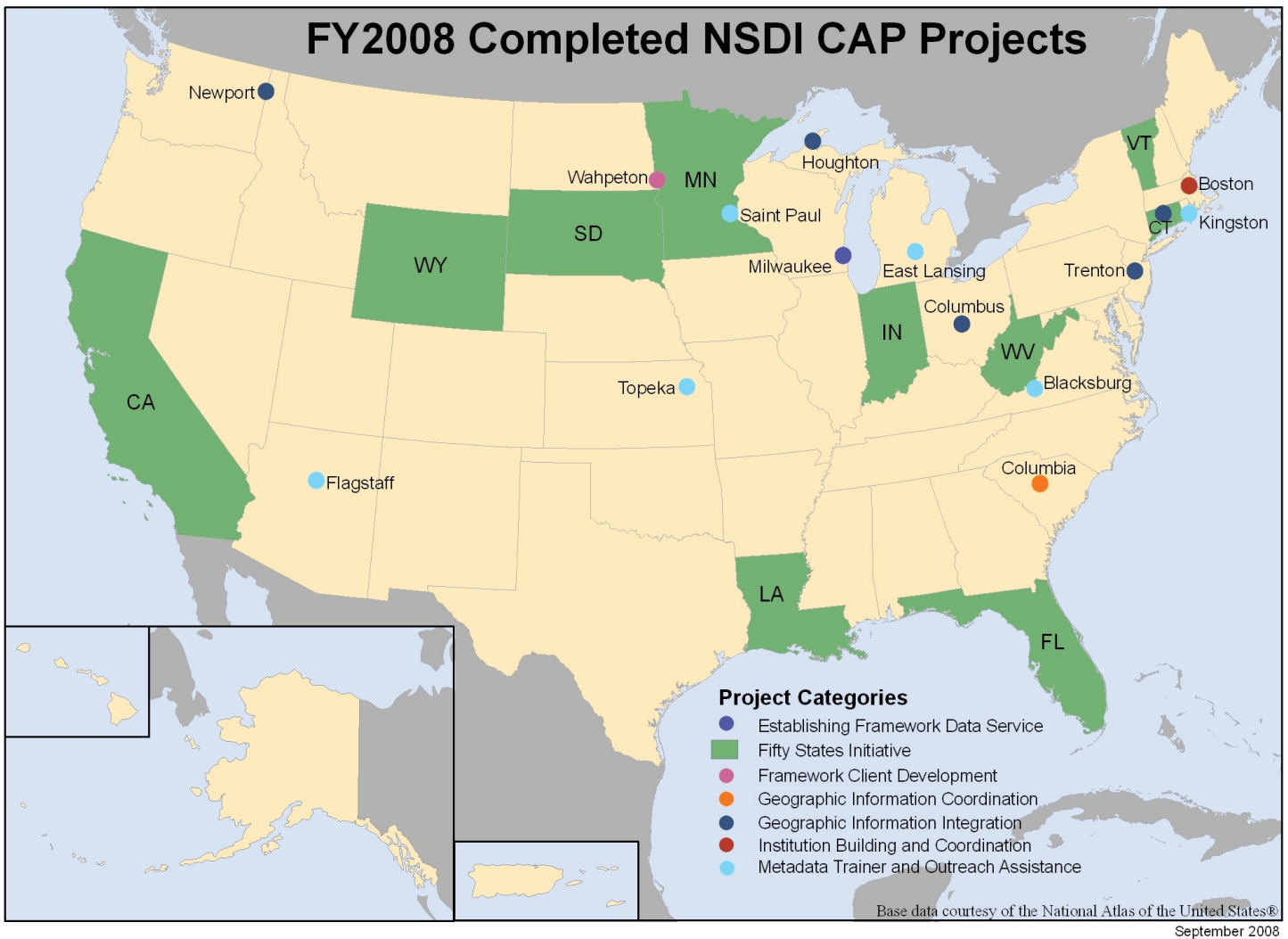
NGAC representatives at the National Conservation Training Center, Shepherdstown, WVA.



NGAC Chair, Anne Hale Miglarese.

2008 NSDI CAP Accomplishments

In the fiscal year 2008, 25 CAP projects were successfully completed in seven NSDI related categories. The results of the projects demonstrate the breadth of activities that were awarded that are building the National Spatial Data Infrastructure necessary to effectively share, manage, and use geospatial data. One of the key outcomes of the CAP is providing organizations with validation of the importance



of their geospatial work which has led to new opportunities that may not have occurred without an award. The NSDI CAP accomplishments further the goals of the NSDI by encouraging and enabling the geospatial community to participate in its development and promotion. Below is a brief description of each project's outcome(s). Learn more about the projects and to read the full final reports please visit the CAP web site, www.fgdc.gov/grants.

(www.rsgis.msu.edu/resources/metadata/), and the Virginia Geospatial Extension Program (gisdata.virginia.gov/Portal/).

Metadata Trainer Outreach and Assistance

- More than 30 metadata workshops were conducted that trained over 500 individuals from across the United States in a wide variety of organizations. Materials for on-line metadata training were developed by Mid America Geographic Information Consortium (magicweb.kgs.ku.edu/magic/projects/metadata_triage.cfm), Michigan State University

Figure 1. The Virginia Metadata Clearinghouse at <http://gisdata.virginia.gov/Portal/>.



Figure 2. Michigan Metadata Training Web Site.

Establishing Framework Data Service Projects

- Implemented a Web Feature Service (WFS) server sharing transportation data in Wisconsin, see the graphical client at gis.sarup.uwm.edu:8080/geoserver/wfst/index.html.

Framework Client Development

- Minnesota, South Dakota, and North Dakota partnered to promote shared client framework development and data services among the States and their local government organizations. The client framework is GeoMOOSE (www.geomoose.org/moose) which was started by the City of St. Paul, Minnesota.

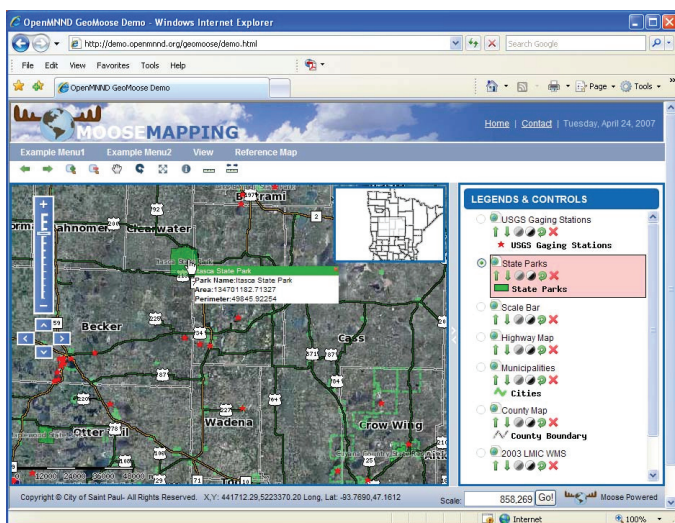


Figure 3. Framework Client Development, State of Minnesota Demo.

50 States Initiative

- Ten Fifty States Initiative projects were completed. The States that completed strategic plans were Wyoming, Vermont, Florida, Connecticut, California, Louisiana, Minnesota, and South Dakota. Business plans were completed for Wyoming, Vermont, South Dakota, Connecticut, and West Virginia. Here are some additional details about the completed projects:
 - The Indiana Geographic Information Council (IGIC) completed a return on investment (ROI) study to support the business case for funding of Indiana's spatial data infrastructure, the IndianaMap. The ROI demonstrated that over \$1.7 billion in Indiana projects and programs are supported by the IndianaMap.
 - West Virginia formed a new statewide GIS coordinating structure.
 - In Louisiana there was an improvement of the knowledge base for emergency situations and for data sharing by cities and utility companies.
 - In Minnesota GIS was recognized as an essential enterprise technology by the State CIO which enabled the launch of a next phase for strategic planning.
 - Vermont's Enterprise GIS Consortium (EGC) was established.
 - In South Dakota, a statewide Cadastral Committee was established.

Geographic Information Coordination

- South Carolina created a central gateway to geospatial information called My South Carolina Map (myscmap.sc.gov) and established a formal agreement among 11 State agencies and local governments.

Institution Building and Coordination

- In Boston, phase 1 of the regional data repository was completed and is known



Figure 4. West Virginia Association of Geospatial Professionals - Charters Members.

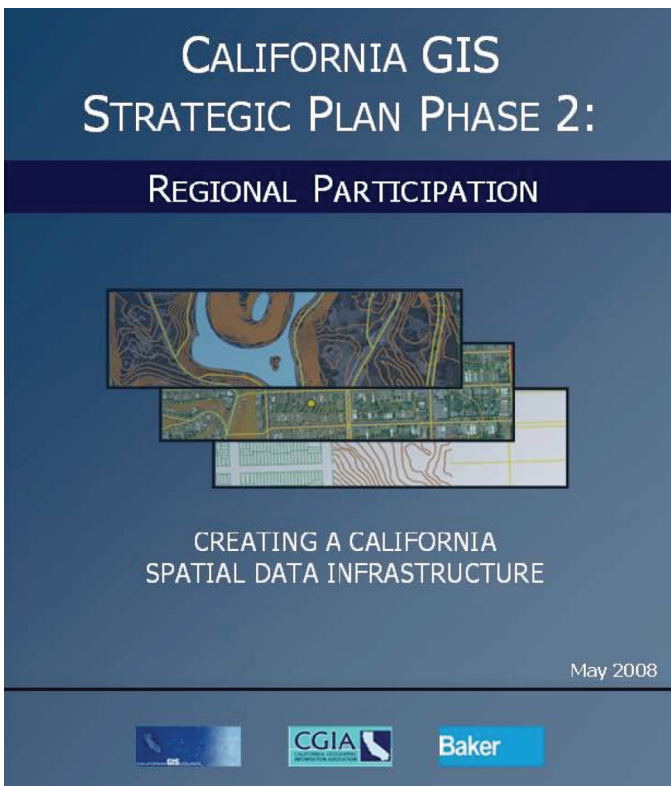


Figure 5. California Strategic Plan.

as the MetroBoston DataCommon (www.metrobostondatacommon.org).

Geographic Information Integration

- New Jersey developed and began hosting OGC-compliant web mapping services (WMS) with metadata and web feature services.
- In Washington, Pend Oreille County formed a GIS consortium and is providing integrated OGC-compliant geospatial datasets to the NSDI via *The National Map*.

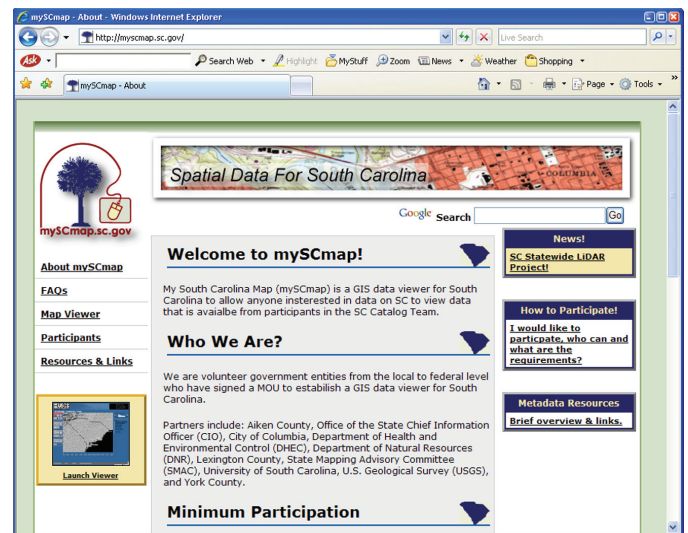


Figure 6. South Carolina's mySCmap portal.

- With a partnership between Ohio State agencies and the Federal Government, Ohio published a WMS for high-resolution imagery to the GIServOhio portal, *The National Map*, and the Geospatial One-Stop portal.
- Through the Connecticut Geospatial Information Systems Council (CGISC), Connecticut initiated the coordination of State geospatial information with the goal to serve latest geospatial information to the public via a web portal.
- Michigan's Western Upper Peninsula Planning & Development Region established a regional geospatial framework organization and completed the installation of ArcIMS and has made geospatial data for the region discoverable via GOS.

For further information please contact Gita Uban-Mathieux, burbanma@fdgc.gov.

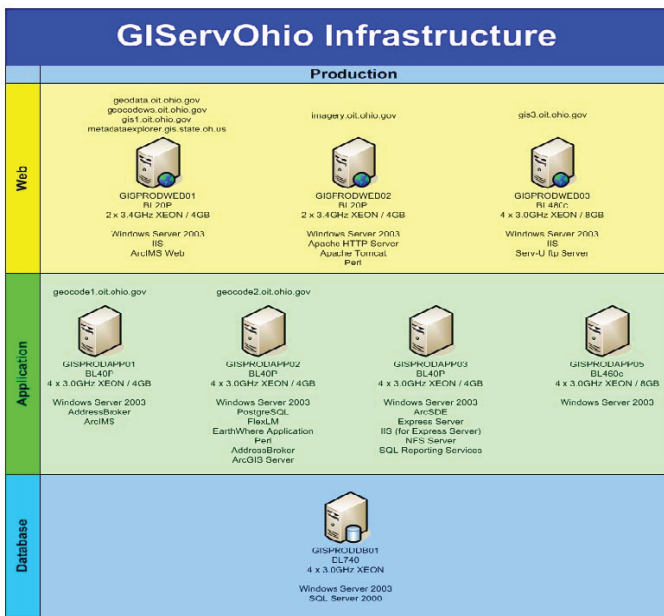


Figure 7. System Architecture for GIServOhio

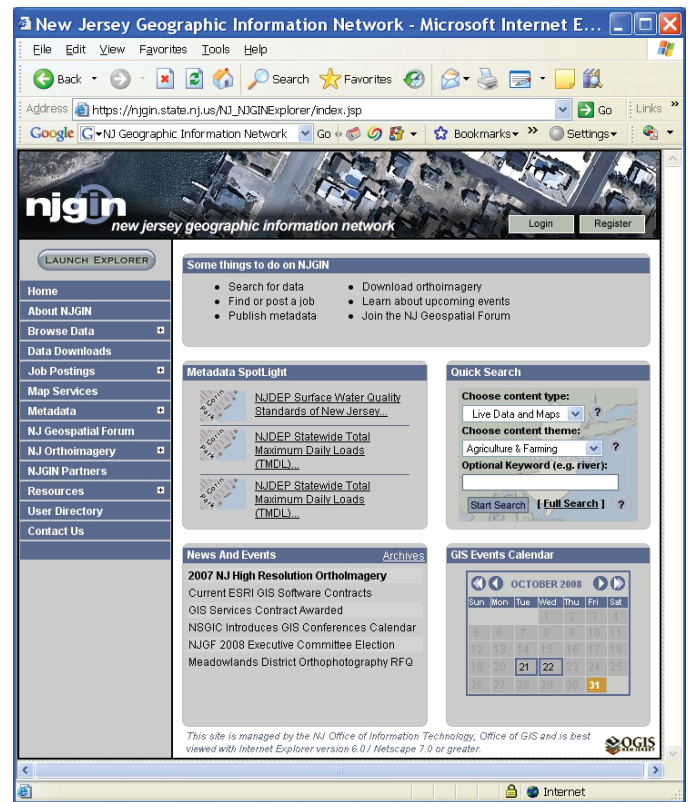


Figure 9. New Jersey Geographic Information Network.

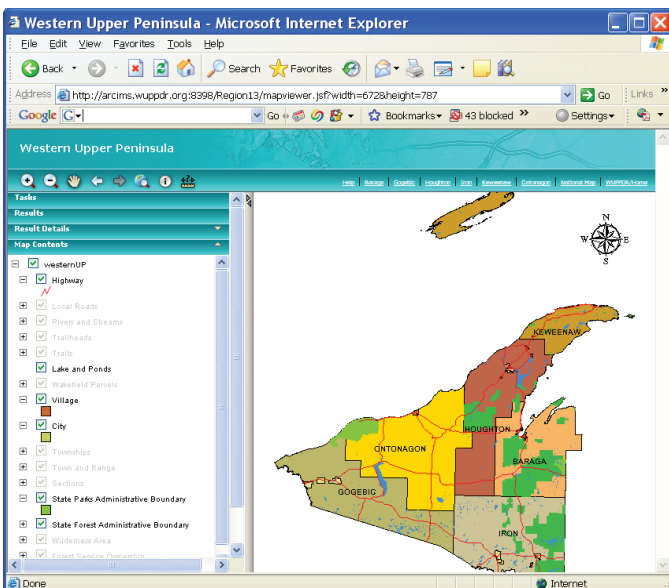


Figure 8. Western Upper Peninsula Planning & Development Region's Map View.

2009 NSDI CAP

On October 10, 2008 the Federal Geographic Data Committee (FGDC) formally announced its request for proposals to support the 2009 National Spatial Data Infrastructure (NSDI) Cooperative Agreements Program (CAP). A total of over \$1.3 million has been made available to fund an estimated 26 innovative projects spread across seven geospatial data categories. The closing date for the 2009 NSDI CAP announcement is January 6, 2009. This year some new edibility restrictions were

introduced in order to ensure that new organizations stand a better chance for an award. Awards may be given to State or local governments, Tribal organizations, academia, private sector, non-profit and/or consortia of organizations. The 2009 CAP categories include a continuation of some old categories as well as the introduction of some new ones. Below is a quick summary of these. More information and the full program announcement are available at www.fgdc.gov/grants/2009NSDICAP/2009CAP.

Category 1: Metadata Trainer and Outreach Assistance provides assistance to organizations with NSDI expertise knowledge and experience in assisting other organizations with the training and implementation of metadata. This category will award up to four cooperative agreements of up to \$25,000 each with the recipient matching 50% of the award with funding or in-kind services.

Category 2: Behind the Portal - Use of Geospatial One-Stop Map and Data Services promotes the development and sharing of client or server-mediated applications (e.g. desktop GIS, decision support software, models, other portals) that can access and exploit

the geospatial data and services referenced by Geospatial One-Stop portal in support of a specific transferable and popular geographic or discipline requirement. The GOS Portal provides a human user interface to locate, visualize, and download domestic geospatial data. Because the portal, located via geodata.gov, supports standard formats and protocols, its catalog service interfaces allow search and retrieval of metadata on data, services, and other resource types referenced by URLs that may be consumed by external clients such as desktop GIS, geo browsers, and other client software. Syndicated feeds of geospatial metadata based on a standing query can also be generated by the portal. In addition, the harvested GOS metadata are exposed for web crawlers and search engines to consume and provide exposure to a broader user community. Map and data services that are provided by publishers in GOS can be used by traversing the links exposed through these various methods, and not only through the traditional browser, but also through commercial and open-source clients to support diverse business processes.

This category will award up to four cooperative agreements of up to \$40,000 per project with the recipient matching 100% of the award with funding or in-kind services.

Category 3: Fifty States Initiative: Strategic and Business Plan Development in Support of the NSDI Future Directions Fifty States Initiative will result in projects that will develop and implement statewide strategic and business plans. This will facilitate the coordination of programs, policies, technologies, and resources that enable the coordination, collection, documentation, discovery, distribution, exchange and maintenance of geospatial information in support of the NSDI and the objectives of the Fifty States Initiative Action Plan. This category will award up to seven cooperative agreements of up to \$50,000 each with the recipient matching 50% of the award with funding or in-kind services.

Category 4: Enabling Use of Government Tabular Data in a Geographic Context projects will develop, demonstrate, and operate

a high-performance, public standards-based Web Service to create geospatial datasets automatically from tabular government data merged with geospatial features. Resulting data and services will allow the data to be discovered, accessed, and applied in its geographic context. A demonstration by the awardee of the process with at least three strategic Federal government data sets is also an expected outcome. This category is based on the fact that abundant 'business' data within all levels of government include reference to a location by address, code, or coordinates. These data frequently reside in a database, spreadsheet, or file but may not have been used to create a map or to perform geographic analysis. In short, they are not being exploited by their owners as geographic data. The Office of Management and Budget's Geospatial Line of Business identifies an inherent benefit in the ability to access, exchange, and visualize such loosely-georeferenced tabular information with other geospatial data for analysis and applications. As the conversion of such tabular data into "geo-enabled" data sets is not straightforward to the non-GIS community, the FGDC seeks collaborative development with a company to publish a shared public web service that can make geo-enablement easy and productive. This category will award one cooperative agreement of up to \$150,000 with the recipient matching 50% of the award with funding or in-kind services.

Category 5: Building Data Stewardship for *The National Map* and the NSDI will assist organizations and consortia to develop stewardship agreements and capabilities that provide long term maintenance of transportation geospatial information that serves Federal, State, Tribal, regional and local community needs. Participation is sought from those organizations with existing transportation data and services considering long-term maintenance of the data that is of interest to *The National Map* and its users. Funds may help participants overcome impediments to participation and improvements to their data and services as part of the NSDI. Primary needs for transportation data are updates for features, attributes, and geometry of roads, railroads, trails and

airports in *The National Map*. The data will be part of a national data inventory of consistent, seamless, integrated data that is continuously improved through the incorporation of data updates from the data community. This category will award up to four cooperative agreements of up to \$50,000 each with the recipient matching 100% of the award with funding or in-kind services.

Category 6: FGDC Standards Development and Implementation Assistance and Outreach (excluding Metadata Standards) will provide funding to organizations to assist in the development of and/or implementation of standards in the FGDC standards program of work other than those for metadata (see category 1 above). This category can provide support that will assist in advancing a draft standard through the FGDC standards process or implementing an FGDC-endorsed standard. In many cases, there are few, if any, materials that can be used to guide others when implementing an FGDC-endorsed standard in their organization. Without materials that document best practices, provide experienced advice, and new techniques, an implementing organization has a steep learning curve. This category can provide materials that provide step-by-step assistance, or at least, a roadmap for implementing FGDC-endorsed standards. This category will award up to two cooperative agreements of up to \$25,000 each with the recipient matching 50% of the award with funding or in-kind services.

Category 7: Demonstration of Geospatial Data Partnerships across Local, State and Federal Government projects will support the further development and documentation of partnerships and processes to implement this nested approach for one or more data themes of NSDI using *The National Map*. The vision for the NSDI includes the integration of all levels of government including the processes for local data to feed into State holdings, which then feed into Federal programs such as *The National Map*. This category will award up to four cooperative agreements of up to \$75,000 each with the recipient matching 50% of the award with funding or in-kind services.

The NSDI CAP awards are scheduled to be announced in February 2009 with project work to begin on each project no later than September 30, 2009. For more information please contact Gita Urban-Mathieux: burbanma@usgs.gov or 703-648-5175.

Geo-Enabling the NSDI CAP

This past summer the FGDC Secretariat posted an interactive map viewer for the NSDI Cooperative Agreements Program, see www.fgdc.gov/grantsviewer/viewer/. Users can now query a database of CAP projects going back to 1994 and see project locales on a map. An identify feature allows users to select a project and get information including project title, recipient, and category. Also included are links to final reports which describe the results of CAP projects from 2003 to the present. The database contains over 600 records and can be queried to provide results by year, category, and/or State.

The viewer uses the Google Maps API to display the CAP projects data from a database. The map viewer is a work in progress with additional features to be added in the coming year. For more information please contact Vaishal Sheth (vsheth@fdgc.gov) or Gita Urban-Mathieux (burbanma@fgdc.gov).



FGDC Welcomes New Employees

We are pleased to announce the start of Mr. Ken Shaffer as the Deputy Staff Director, Federal Geographic Data Committee (FGDC).

Ken has over twenty years of management and technical experience in program, project, and contract management, standards development, and intergovernmental coordination for geospatial information and technology. Ken joins our team after serving the past six years as a Senior Geographic Information Systems (GIS) Program Developer and Manager with Booz Allen and Hamilton (BAH), where he had responsibility for leading the Geospatial Information and Services Enterprise Program that provides support to a number Department of Defense offices. At BAH, he managed and had oversight responsibility for the program management office that supported their enterprise geospatial program. He also served as a subject matter expert on geospatial data standards, integration, and applications, led the development of program process flows on data calls and dissemination, and created policy and guidance on data standardizing for use in complex organizations. Prior to his tenor with BAH, he served over a number years as a Senior GIS Analyst, Database Administrator and State Coordination Liaison for the State of North Carolina. There he managed and supported the development of metadata, clearinghouses, training, and outreach programs, FGDC Cooperative Agreement Program grants, and databases for geospatial programs. His experience in managing and developing successful cooperative efforts with representatives of Federal, State, and local government agencies, and the private industry, will be a valuable asset for our organization.

Mr. Lew Sanford joins the FGDC as the Senior Program Manager in the Federal Geographic Data Committee (FGDC) Secretariat. Lew will have the daily management oversight responsibility for the Geospatial Line of Business.

Lew has over twenty years of program management, information technology and strategic planning experience and extensive experience

in e-Government (eGov) programs supporting Intergovernmental coordination of geospatial and information technology. Lew joins our team after serving the past several years as the Chief Information Officer for the Department of Justice (DOJ), where he had responsibility for all information technology and support for the DOJ. Prior to serving at DOJ, Lew served at the General Services Administration (GSA) as the GSA eGov Program Executive and led five of the President's Management Council eGov Initiatives to simplify and unify government services to citizens, business and government. He also successfully established the vision and implemented a joint program management office to develop the five eGov initiatives into viable businesses. Recently Lew has been a very active participant in the Geospatial Line of Business activities, leading the Grants and Contract work group and engaging with the Performance Management and Lifecycle Management work groups to facilitate increased effectiveness and usage of geospatial data across the federal government.

Forest Service and Bureau of Land Management Geospatial 2009 Conference

There is no tuition for this conference.

Join the Forest Service and Bureau of Land Management as we gather to learn from each other at Geospatial '09:

April 27-May 1, 2009

Snowbird Conference Center

on the Uinta-Wasatch-Cache National Forest near Salt Lake City, UT

To register and obtain more information go to: fsgeodata.fs.fed.us/geoconference/.

To make lodging reservations, call 1-800-453-3000 and reference the FS/BLM Geospatial Conference. Rate is \$94 single/\$104 double (tax exempt).



Geospatial '09

Healthy Forests - Healthy Lands - Healthy Earth

Additional information and the initial call for presentations and posters will be posted to the G'09 website soon.

Geospatial '09 Co-Chairs
Susan DeLost (FS) and Bob Bewley (BLM)

Snowbird's pedestrian village includes four unique guestroom lodges and the Snowbird Center. Our IACC (International Association of Conference Centers) approved, five time M&C Gold Key award winning Cliff Lodge Conference Center, 15,000 square foot Event Center, 3,600 square foot Conference Center Terrace venue and the Cottonwood Conference Center are within a 5 minute walk of each other, totaling 50,000 square feet of meeting and event space resort wide.

There are 7 restaurants, 5 lounges, a full service pharmacy, post office, grocery deli, internet café, liquor store, other concessions and several unique gift shops situated throughout the village.

The paved walkways from each of our lodges make getting around the resort convenient for our guests. Our Barrier Free Trail is a stunning one mile round-trip nature walk that begins at the Skier's bridge and ends up a beautiful observation deck overlooking the Gad Valley. Adults and children of all ages can enjoy this low impact hike. The trail is also wheelchair accessible.

The Snowbird Activity Center and many of our mountain's favorite activities are accessible from the plaza deck right next to our famous aerial TRAM.

Between our magnificent Cliff Spa, tennis courts, fish pond, playground, horseback riding, ATV tours, Alpine Slide, ZipRider, Bungy trampoline and more... there is something for everyone at Snowbird and whether winter or summer... we promise to keep you invigorated and make your mountain adventure a most memorable experience.



Metadata training integration with geospatial courses at George Mason University.

Dr. Chaowei Phil Yang and Bonnie Gallahan, FGDC, integrated metadata training to several GMU regular courses including Distributed GIS, Algorithms & Modeling in GIS, Scientific Database and Visualization. The metadata component integrated including 1) metadata intro, 2) nsdi intro, 3) framework data themes, 4) GOS, 5) content standard for digital geospatial metadata (CSDGM), 6) metadata tools, and 7) metadata in practice. The following photo is a picture taken when Dr. Yang introduces metadata utilization in the Scientific Database and Visualization class. The effort is sponsored by the 2008 NSDI CAP-Category 1: Metadata Training for Earth Science and Cyberinfrastructure Communities Granted to CISC at GMU. For further information, please contact Bonnie Gallahan at bgallahan@fgdc.gov, or Dr. Yang at cyang3@gmu.edu.



Dr. Phil Yang, Scientific Database Course at George Mason University, Fairfax, VA

EPA Wins Government Computer News Award for Metadata Solutions

On Wednesday, October 22, the EPA received the Government Computer News “IT Achievement Award”, one of ten awarded to government agencies for demonstrating extraordinary information technology accomplishments for their agencies. The award was given to EPA for its “Meta(data)-morphosis”, enabling the EPA’s geospatial analyst community to have much more efficient and broader access to geospatial metadata and its underlying geospatial data needed to perform their jobs. GCN highlighted this achievement on their website-www.gcn.com/print/27_26/47379-1.html Contact: Michelle Torreano, torreano.michelle@epa.gov.



At GCN Award Ceremony, Wyatt Kash-GCN, Michelle Torreano-EPA, Matt Leopard-EPA and Linda Gooden-Lockheed Martin.

FGDC Secretariat Staff

Staff Director

Ivan DeLoatch
Phone: 703-648-5752
E-mail: ideloatch@fgdc.gov

Deputy Staff Director

Ken Shaffer
Phone: 703-648-5740
E-mail: kmschaffer@usgs.gov

Program Assistant

Carol Petr Greenough
Phone: 703-648-4150
E-mail: cpetr@fgdc.gov

Program Assistant

Vanessa Hardnett
Phone: 703-648-4142
E-mail: vhardnett@fgdc.gov

Senior Technology Advisor

Doug Nebert
Phone: 703-648-4151
E-mail: ddnebert@fgdc.gov

Senior Policy Advisor

John Mahoney
Phone: Seattle, WA 206-220-4621
E-mail: jmahoney@fgdc.gov

Senior Program Manager

Lewis Sanford
Phone: 703-648-4152
E-mail: lsanford@fgdc.gov

FGDC Interagency Liaison

Patricia Phillips
Phone: 703-648-5931
E-mail: paphillips@fgdc.gov

FGDC & GSDI Secretariat

Alan Stevens - Professor Emeritus
E-mail: astevens@gsdi.org or
asteve1@usgs.gov

Framework & Cooperating States Coordinator

Milo Robinson
Phone: 703-648-5162
E-mail: mrobinson@fgdc.gov

Metadata Coordinator

Sharon Shin
Phone: Denver, CO 303-202-4230
E-mail: sharon_shin@fgdc.gov

Standards Coordinator

Ms. Julie Binder Maitra
Phone: 703-648-4627
E-mail: jmaitra@fgdc.gov

Training & Education / Tribal Liaison

Bonnie Gallahan
Phone: 703-648-6084
E-mail: bgallahan@fgdc.gov

NSDI CAP Coordinator

Brigitta Urban-Mathieux
Phone: 703-648-5175
E-mail: burbanma@fgdc.gov

Webmaster

Vaishal Sheth
Phone: 703-648-5930
E-mail: vsheth@fgdc.gov

Program Analyst/LOB/Communications

Roxanne Lamb
Phone: 804-261-2653
E-mail: rhlamb@fgdc.gov

Program Analyst

Arista Salimi Maher
Phone: 703-648-6283
E-mail: amaher@fgdc.gov

2009 Upcoming Conferences

February 19–20	NC GIS Conference	Raleigh, NC
February 22–25	NSGIC Mid-year	Annapolis, MD
March 2–5	Coastal GeoTools	Myrtle Beach, SC
March 9–13	ASPRS	Baltimore, MD
March 22–27	AAG	Las Vegas, NV
April 19–22	GITA	Tampa, FL
April 27–May 1	USFS/BLM GIS Conf.	Salt Lake City, UT
June 14–18	NCAI Mid-year	Niagara Falls, NY
July 11–17	ESRI	San Diego, CA
July 24–28	NACO	Nashville, TN
August 18–20	Tribal College Forum	Bellingham, WA
August 8–22	Crime Mapping	New Orleans, LA
October 4–8	NSGIC Annual	Cleveland, OH

590 National Center
Federal Geographic Data Committee
U.S. Geological Survey
12201 Sunrise Valley Drive
Reston, VA 20192

Official Business
Penalty For Private Use \$300

First Class Mail
Postage & Fees Paid
USGS
Permit No. G-788