

National Weekly Cattle And Beef Summary

Des Moines, Iowa

Mon Jan 12, 2009

USDA Livestock & Grain Market News

For Week Ending:

1/10/2009

This Week

Prior Week

Last Year

[LM_XB463](#)

	<u>This Week</u>	<u>Prior Week</u>	<u>Last Year</u>
CUTOUT VALUES	140.97	141.18	143.13
Primal Rib	188.88	196.36	207.72
Primal Chuck	123.48	119.47	110.81
Primal Round	138.98	136.51	134.39
Primal Loin	177.00	184.09	203.18
Primal Brisket	95.08	93.28	89.37
Primal Short Plate	95.76	92.77	90.09
Primal Flank	84.19	81.54	82.75

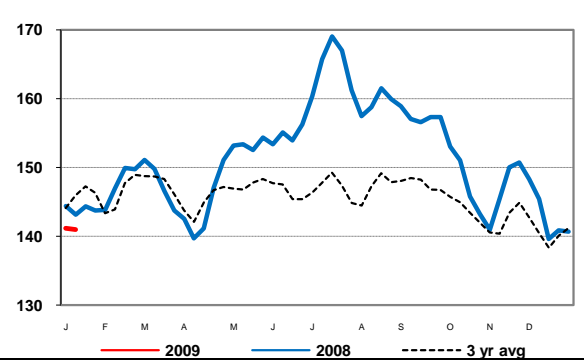
WEEKLY VOLUME BREAKDOWN

	<u>This Week</u>	<u>Prior Week</u>	<u>Last Year</u>
Total Loads	8015	6402	7552
Prime Loads	51	112	31
Branded Loads	702	531	626
Choice Loads	2306	1660	2121
Select Loads	1824	1274	1614
Ungraded Loads (cuts, trims, grinds)	3132	2826	3160

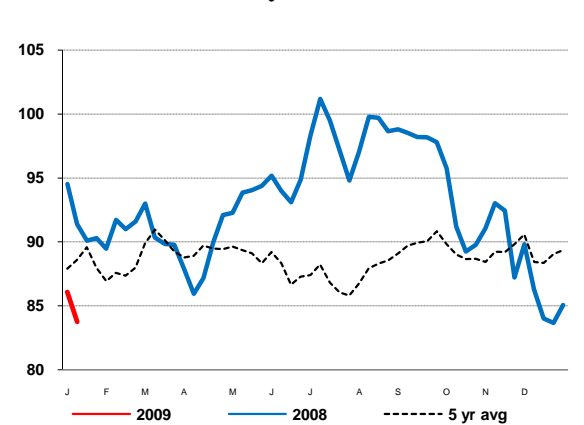
TYPE OF SALES

	<u>This Week</u>	<u>Prior Week</u>	<u>Last Year</u>
Negotiated Sales 0-21 Day	3567	2645	3332
Negotiated Sales 21+ Day	840	477	1120
Formula Sales	3120	2989	2944
Forward Contract Sales	489	290	156
Domestic Sales	7469	6040	6948
NAFTA Exports	200	202	No Comp
Overseas Exports	346	160	No Comp

Weekly Comprehensive Cutout Value



5 Area Weekly Live Steer Price

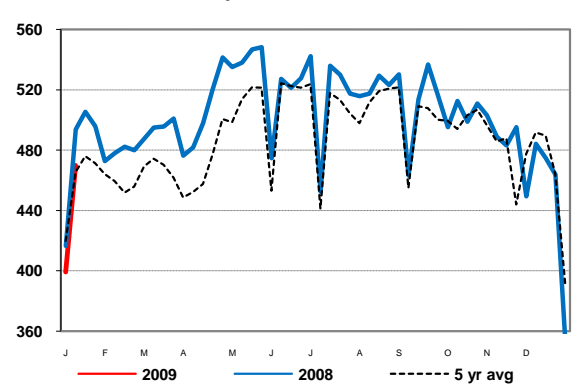


[LM_CT150](#)

5 AREA WEEKLY WEIGHTED CATTLE PRICE

	<u>This Week</u>	<u>Prior Week</u>	<u>Last Year</u>
Live Steer	83.75	86.08	91.40
Live Heifer	83.77	86.36	91.29
Dressed Steer	133.53	137.36	147.18
Dressed Heifer	133.64	137.63	147.10

Weekly Beef Production



[NW_LS441](#)

WEEKLY USDA BY-PRODUCT DROP VALUE (STEER)

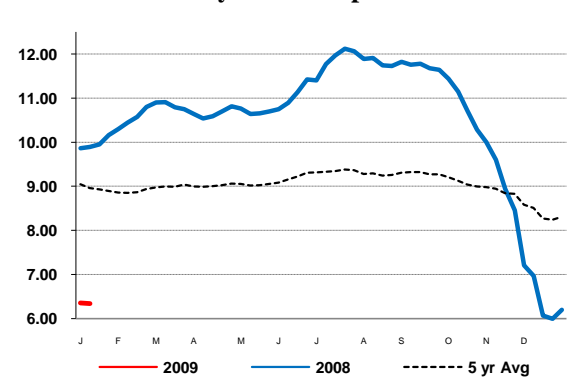
	<u>This Week</u>	<u>Prior Week</u>	<u>Last Year</u>
	6.34	6.35	9.89

[SJ_LS712](#)

BEEF PRODUCTION

	(Estimate)	(Estimate)	(Actual)
Slaughter	601,000	511,000	634,000
Live Weights	1304	1306	1297
Dressed Weights	784	784	773
Beef Production (mil lbs)	469.8	399.2	488.0

Weekly Steer Drop Value



[NW_LS196](#)

NATIONAL STEER & HEIFER ESTIMATED GRADING PERCENT

For Week Ending: Dec 27, 2008

Total Quality and Yield Grades for All Regions

	<u>This Week</u>	<u>Prior Week</u>	<u>Last Year</u>
Prime	2.67%	2.94%	2.29%
Choice	59.04%	56.76%	54.40%
Select	31.91%	33.26%	34.69%
Yield only	2.14%	2.84%	3.34%

Percentage by Class

	<u>This Week</u>	<u>Prior Week</u>	<u>Last Year</u>
Steer	50.11%	47.27%	50.72%
Heifer	31.52%	31.43%	31.17%
Dairy Cow	8.23%	8.76%	7.16%
Other Cow	9.03%	10.98%	9.68%
Bulls	1.11%	1.56%	1.27%

USDA Livestock & Grain Market News

Des Moines, Iowa

Phone: 515-284-4460

Email: desm.lgmn@usda.gov

www.ams.usda.gov/LSMarketNews