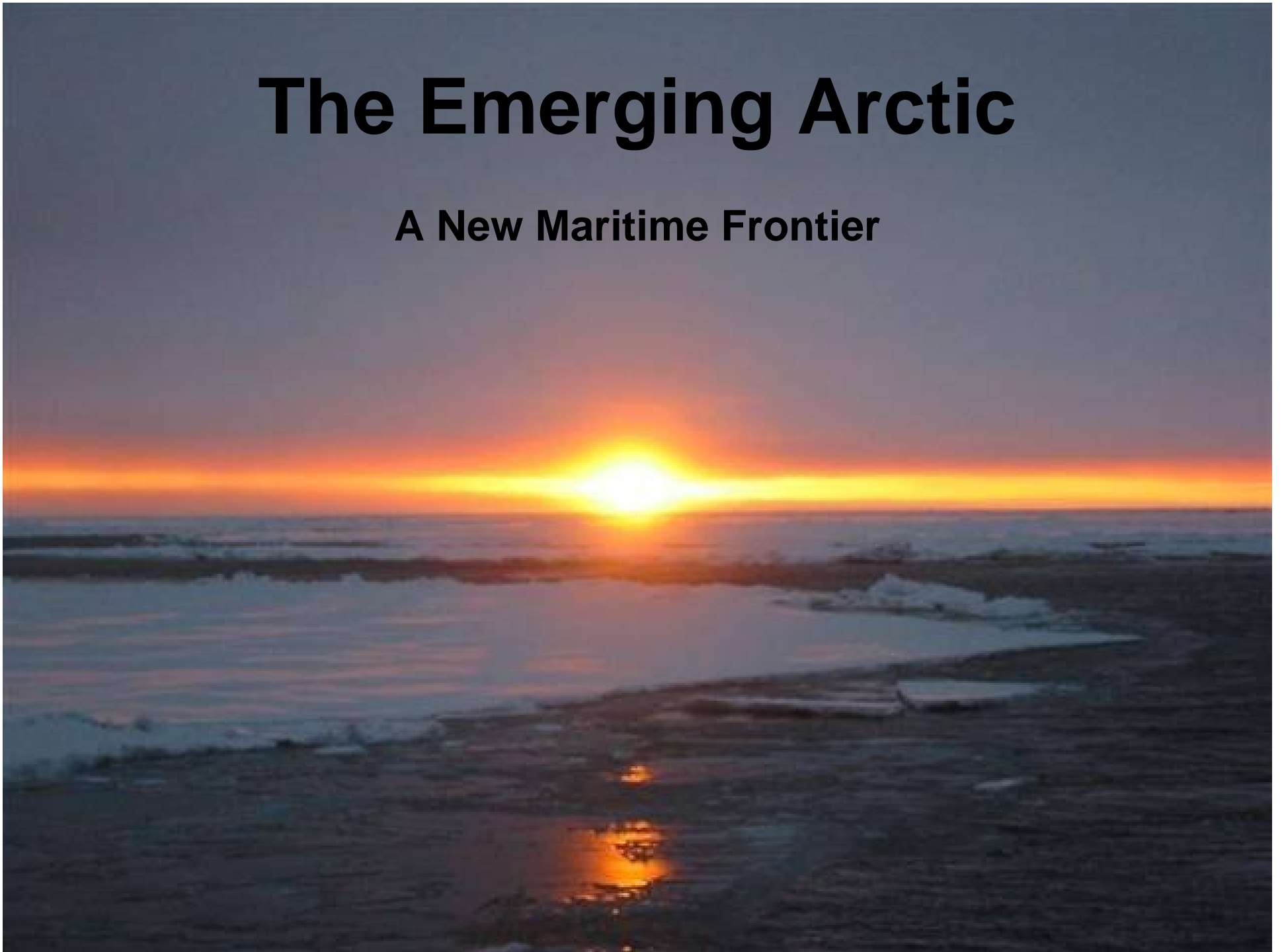


The Emerging Arctic

A New Maritime Frontier



Agenda

- Changes in the Arctic
- Coast Guard in the Arctic
- Coast Guard Missions
- Arctic Operations Summer 2008



Summer Sea Ice Retreat



Boundary Claims



OXFORD
INSTITUTE
FOR
ENERGY
STUDIES



Homeland
Security

1) North Pole

2) Lomonosov Ridge

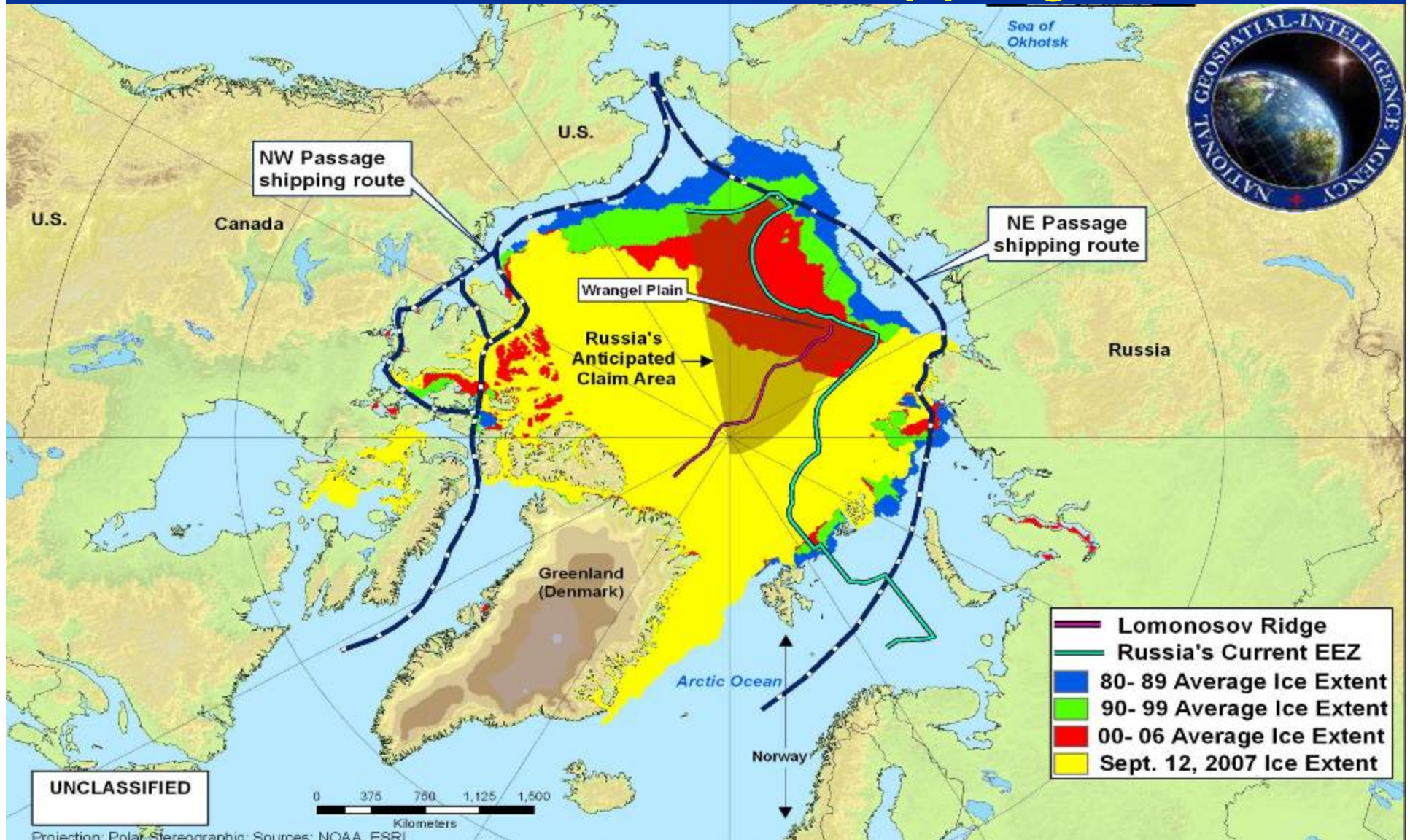
3) 200 nautical mile line

4) Russian-claimed territory



SOURCE: University of Durham, UN, Marum

Future Maritime Arctic – Shipping Routes



UNCLASSIFIED



Homeland Security



Maritime Traffic Management

An aerial satellite-style image of a coastal region, likely the Mediterranean Sea. The image shows a large body of water with varying shades of blue and green, indicating different depths and water conditions. The surrounding land is shown in shades of brown and green, with some urban areas and infrastructure visible. The overall scene is a wide-angle view of a significant maritime area.

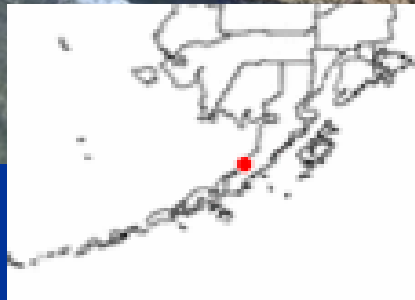
- Discuss process for establishing ship routing measures
 - Lengthy process, ultimately approved by International Maritime Organization

Coastal Erosion

- Loss of protection from fall storms



Port Heiden



Kivalina



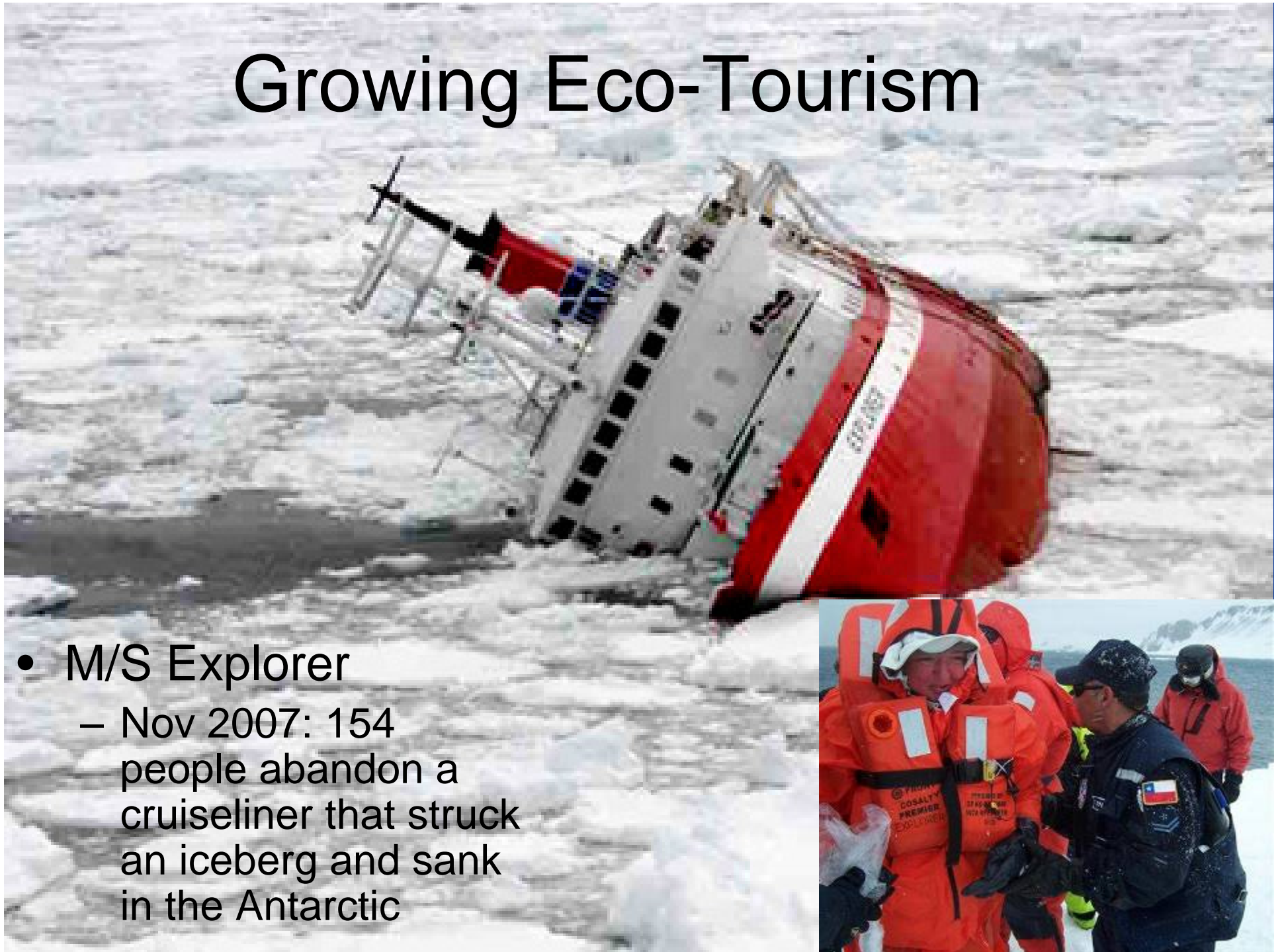
Homeland
Security



Seasonal Ore Operations



Growing Eco-Tourism



- M/S Explorer
 - Nov 2007: 154 people abandon a cruiseliner that struck an iceberg and sank in the Antarctic



Expanding Resource Exploration

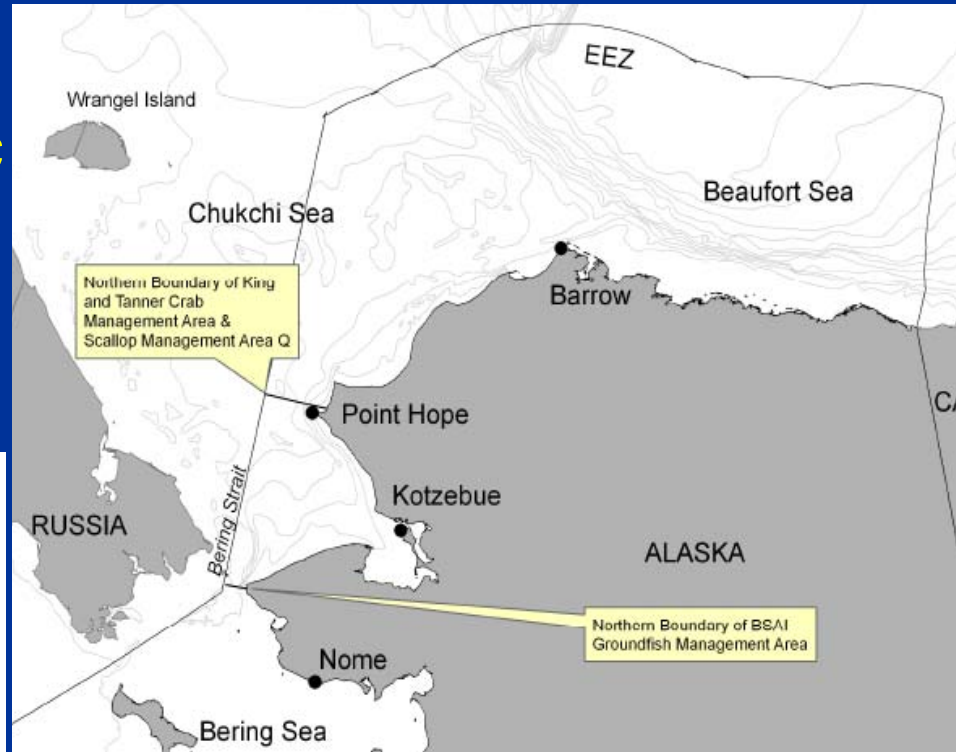
- Increased offshore exploration
 - 18 commercial vessels
 - 12 exploration wells
- Legal issues pend



Homeland
Security

Species Movement North

- Stocks are moving North
- No commercial fishing in Arctic
 - Awaiting NPFMC decision



Pollock (Saithe) - Pollachius virens - 70-100 cm

NPFMC – North Pacific Fishery Management Council



**Homeland
Security**



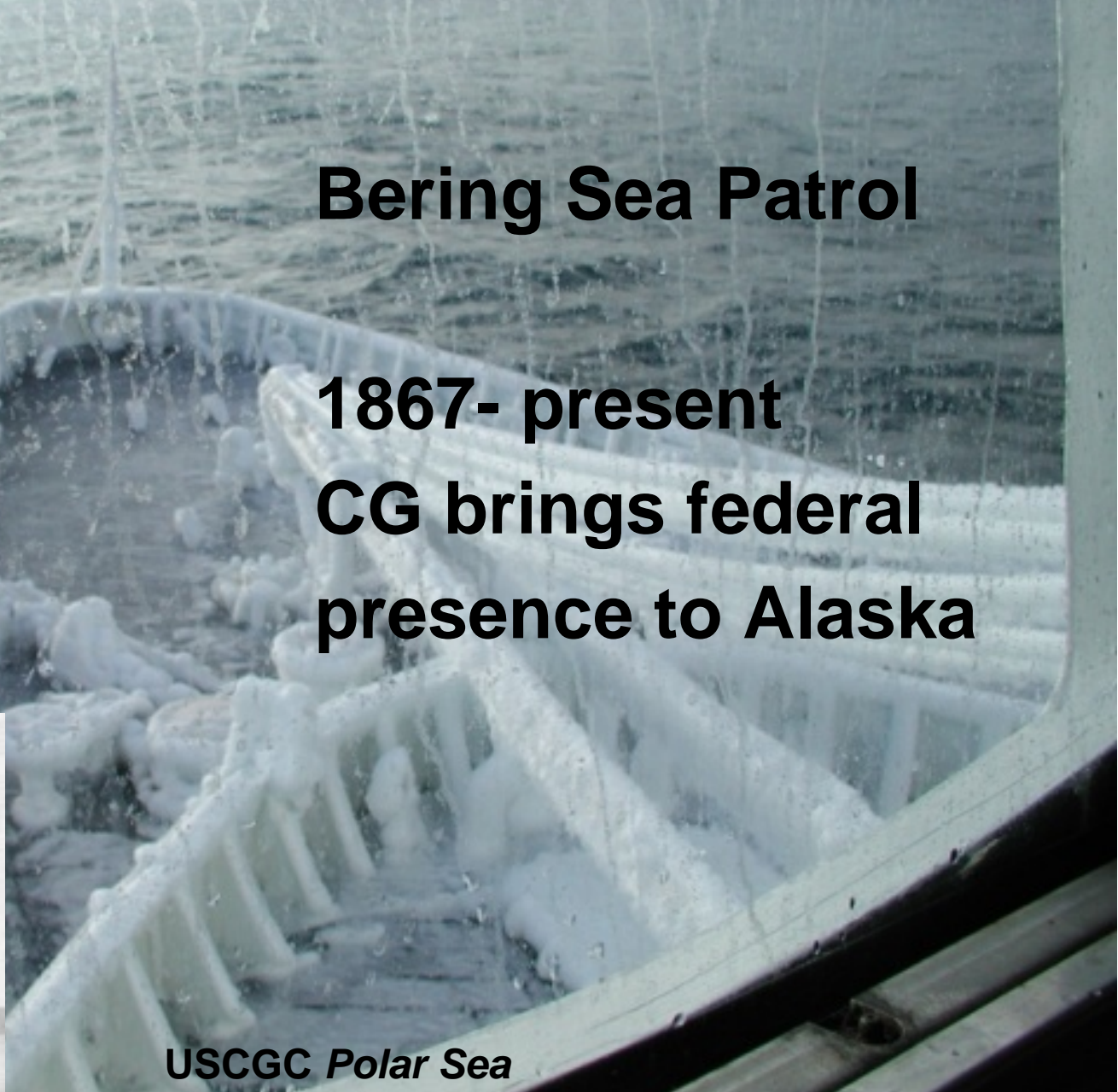
Coast Guard in the Arctic



USRC *Bear*



USRC *Manning*



Bering Sea Patrol

1867- present

**CG brings federal
presence to Alaska**

USCGC *Polar Sea*

Overland Relief Expedition

Crews race across the frozen sea to trapped vessels

Reindeer meat “on the hoof” herded to crews in time to prevent starvation



Loran

- Post WWII, Coast Guard sets up 6 loran stations.



Loran: LOng RAnge Navigation

Loran Station Attu
Loran Station Kodiak
Loran Station Port Clarence
Loran Station Shoal Cove
Loran Station St. Paul
Loran Station Tok



**Homeland
Security**



Northwest Passage Expedition



- 1957 – CG Cutters Storis, Spar, Bramble circumnavigate North America.

The CG has 142 years of Arctic Service



USRC *Bear*

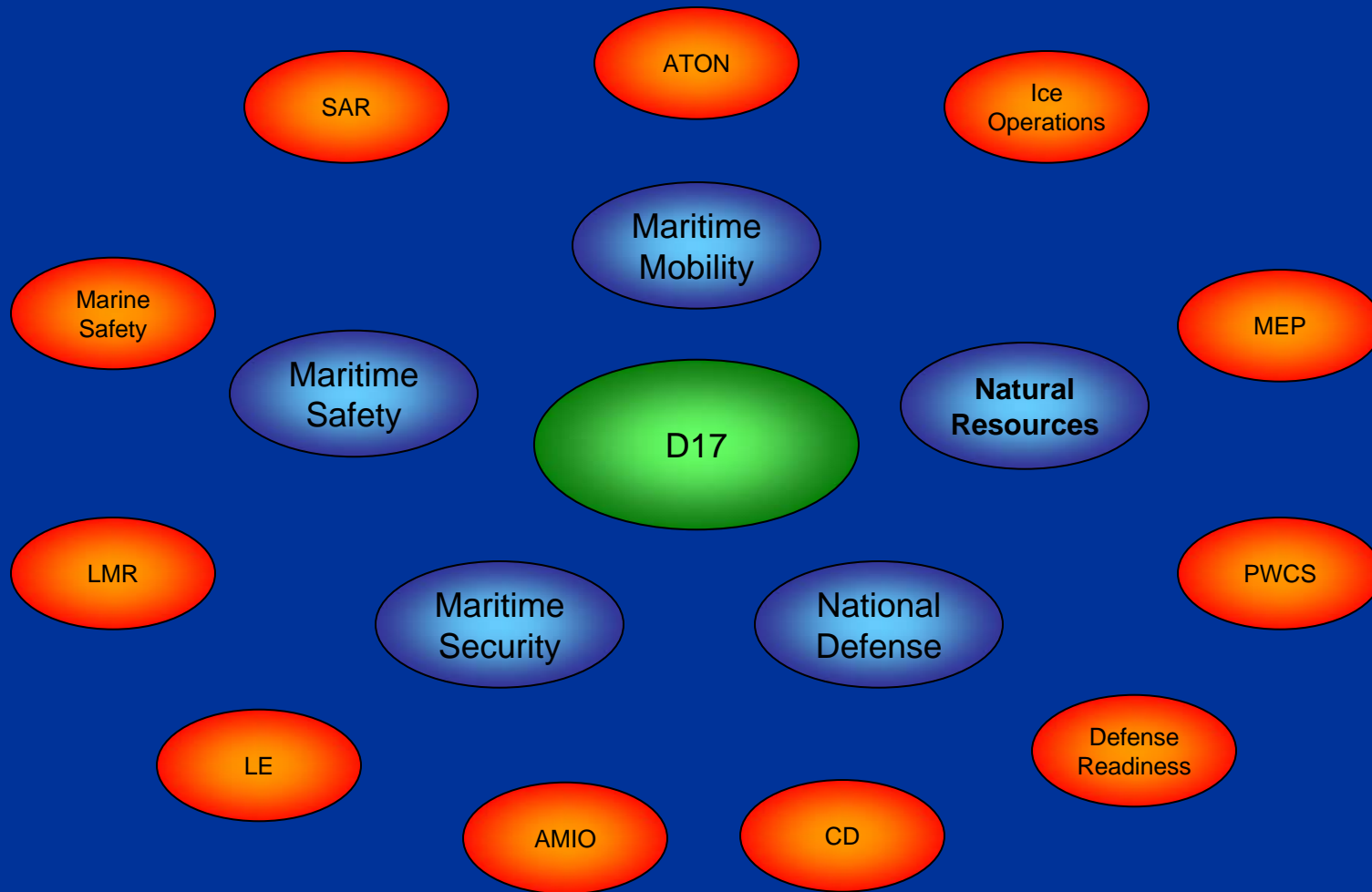
- Ice breaking
- Ice patrol
- Loran
- Marine mammal protection
- Bering Sea Patrols
- World War II
- Overland Expedition
- Exploration
- Marine Safety



Homeland
Security



Missions



Homeland
Security



Maritime Law Enforcement

- Domestic Fisheries
- US Russian Maritime Boundary Line (MBL)
- IUU/HSDN
- LE Partnerships



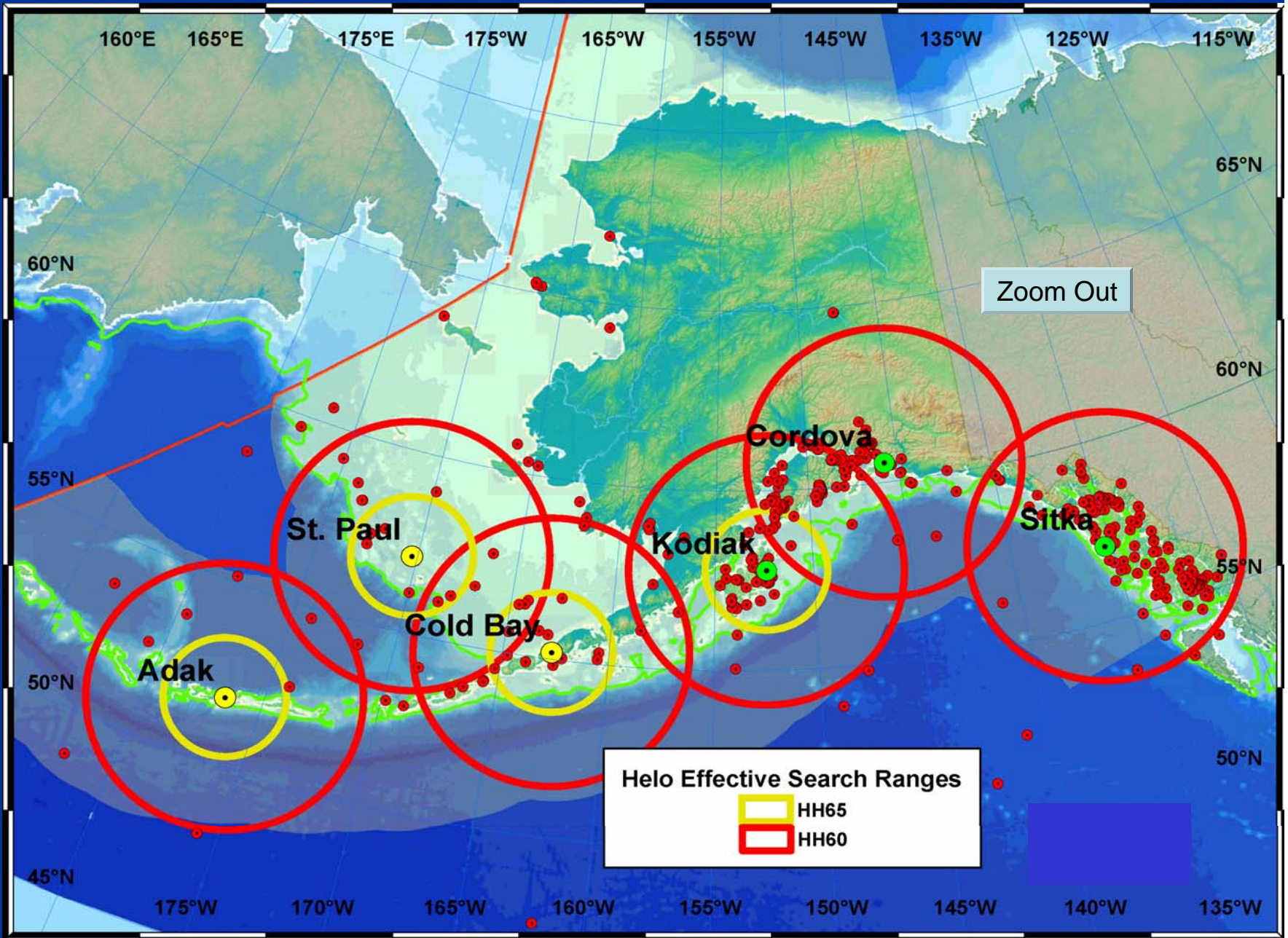
Homeland
Security



Marine Safety



Search and Rescue – FY07



Aids to Navigation

- Largest Buoy Tender Fleet in Pacific Area
- Flying ANTs
- Loran Stations



Ice Operations

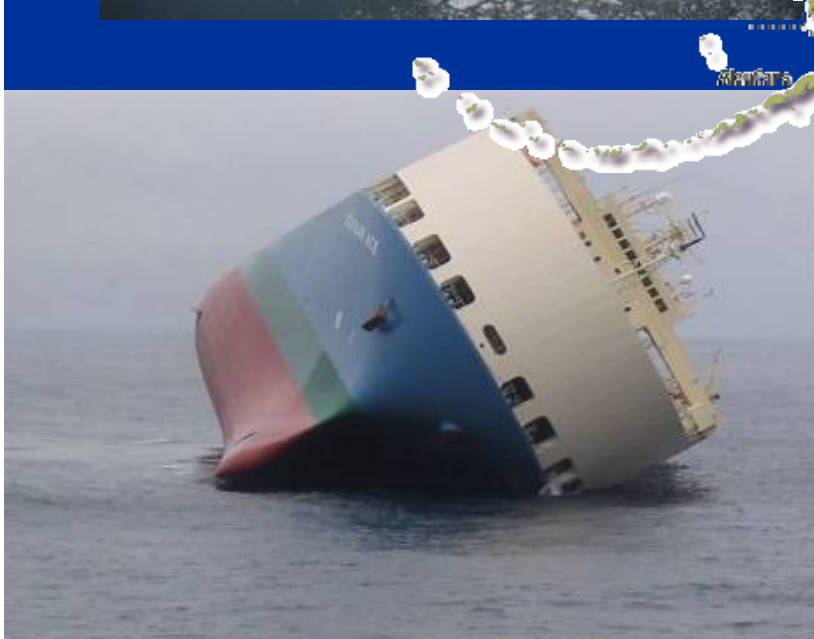
- Polar Region Ice Breaking – Scientific & National Security Activities
- Cook Inlet – Ice Measures
- Valdez – Ice Routing



Homeland
Security



Marine Environmental Response



Homeland Security

- AMSC Sub-Committees (PSCs)
- HCPV Security
- SEAK “1 Port” ANOA Concept
- 225’ WLB MSST Transports



Homeland
Security



Defense Readiness

- Joint Exercises
- Military Outload Security



Arctic Changes Drive Coast Guard Mission Expansion North

All Coast Guard missions in Southern Alaska must be expanded to Northern Alaska



Science is More Critical

- Support of scientific endeavors
 - Research on climate change and its effects

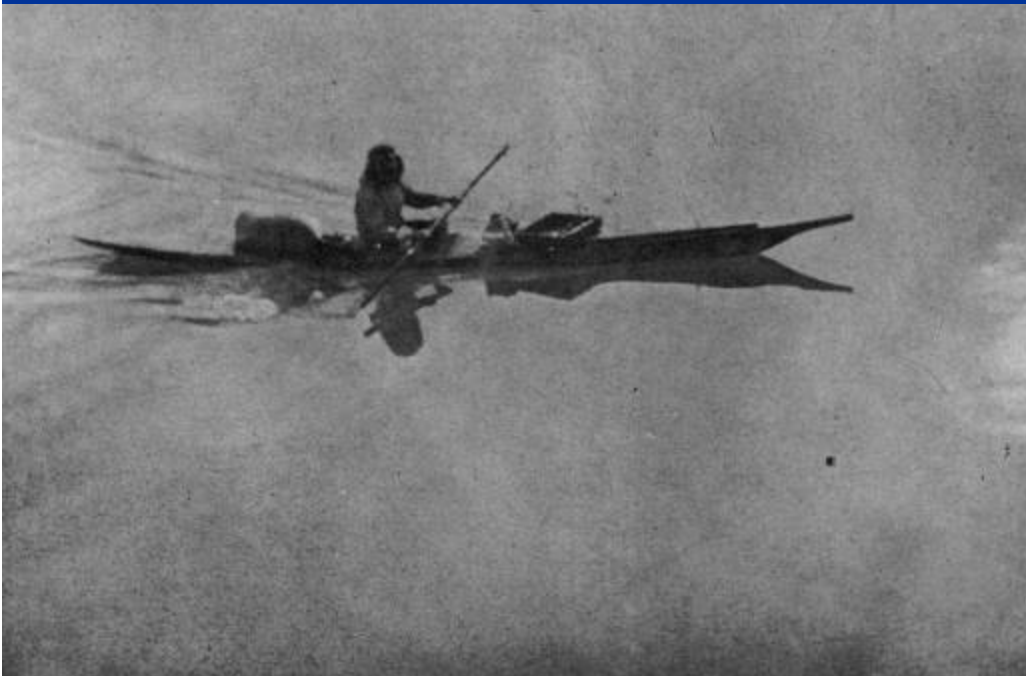


Homeland
Security



Coastal Community Engagement

- Engagement with the peoples of the Northern regions of Alaska
 - Leverage thousands of years of experience
 - Promote environmental and cultural understanding



Arctic Ops Summer '08

- Develop Arctic Domain Awareness
 - Nome C130 Deployment
- Cutter Operations
 - HEALY, POLAR SEA
- CGC SPAR Waterways Analysis & Management System
- International Search and Rescue Exercise
- Tailored Force Package Deployment
- Prudhoe Bay Maritime Security Deployment
- Coastal Community Engagement



Arctic Domain Awareness

- Air Patrols
 - ‘Eyes on’ above the Arctic Circle
 - Provide scientists platforms of opportunity



Arctic Domain Awareness



- 2007-2008 - C130 deployment to Forward Operation Location (FOL) in Nome, Alaska



CGC HEALY

- Three Arctic deployments in 2008 in support of National Science Foundation



CGC POLAR SEA

- 2008 – Arctic mission instead of standby for Antarctic mission.



CGC SPAR

- Waterways Analysis & Management System (WAMS) assessment/reassessment of North Slope



Joint Search and Rescue Exercise

- 2008 – Tentative plans to invite Arctic nations to participate to build partnerships and test our capabilities.



Norway



Canada



Denmark



Russia



Homeland
Security



Tailored Force Package

- August 2008 - Barrow, AK
 - 2 Helos and 2 25' small boats via C-130
 - Boating Safety Training Team
 - Community/tribal liaison Team



Auxiliary in the Arctic

- Provide boating safety services tailored to each Arctic Community's need.
- Conduct educational exchange on boating safety.
- Current plans for visits include Barrow, Kotzebue, Nome, and possibly some of the remote North Slope villages.



Homeland
Security



Prudhoe Bay Maritime Security Deployment

- 2008 - Prudhoe Bay, AK
 - Community/tribal liaison Team
 - Arctic Security exercise





Way Ahead

- Potential establishment of one or more Forward Operating Locations on the North Slope and Western Alaska
- Collect lessons learned from summer operations
- Build operational requirements baseline

Summary



- The Arctic is upon us
- Arctic boundaries must be determined
- Others will balance development and the environment. The Coast Guard will provide maritime safety and security for their decisions
- All Federal, State, and local agencies must prepare for full seasonal operations in the Arctic

Questions?



