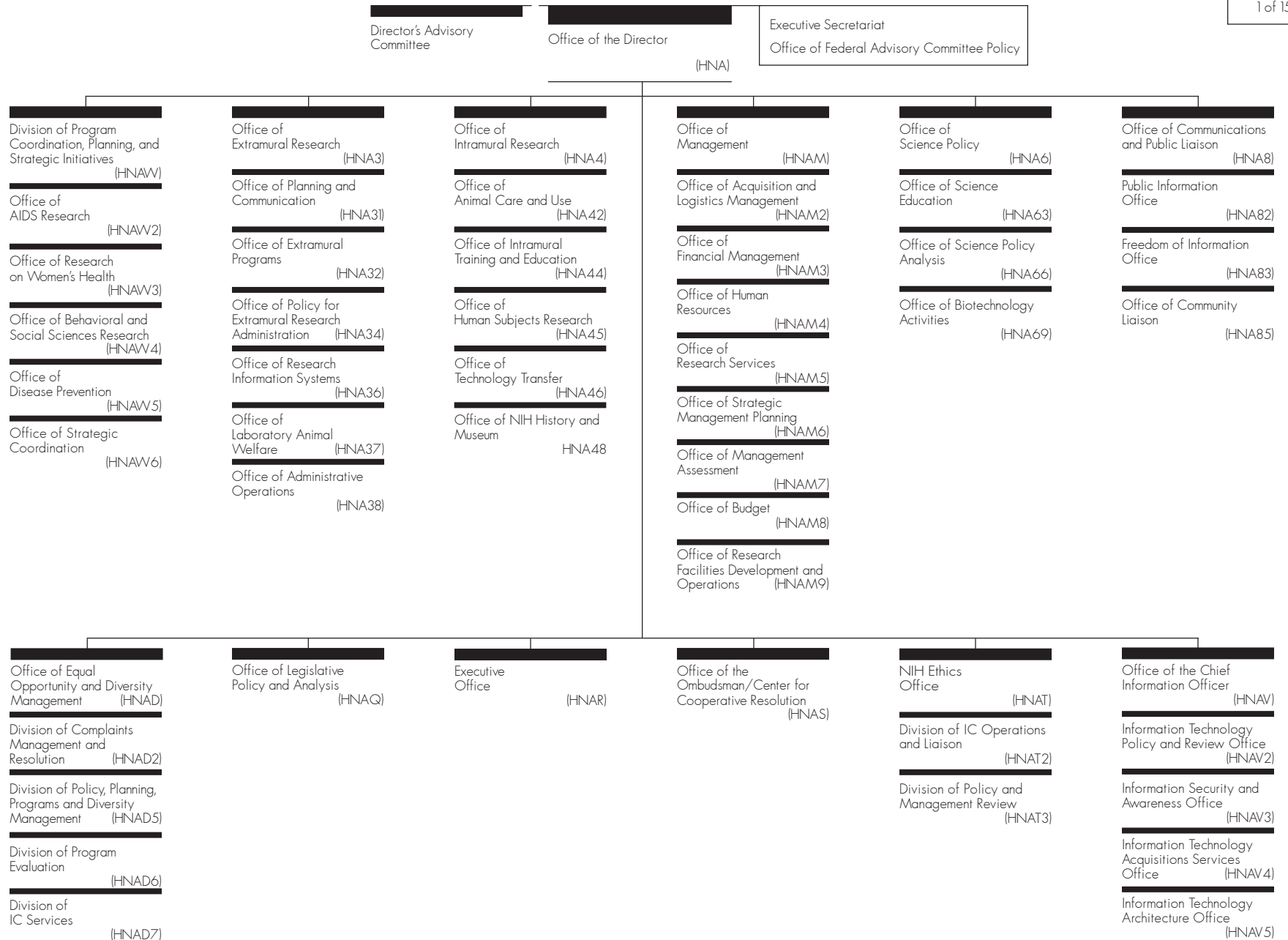
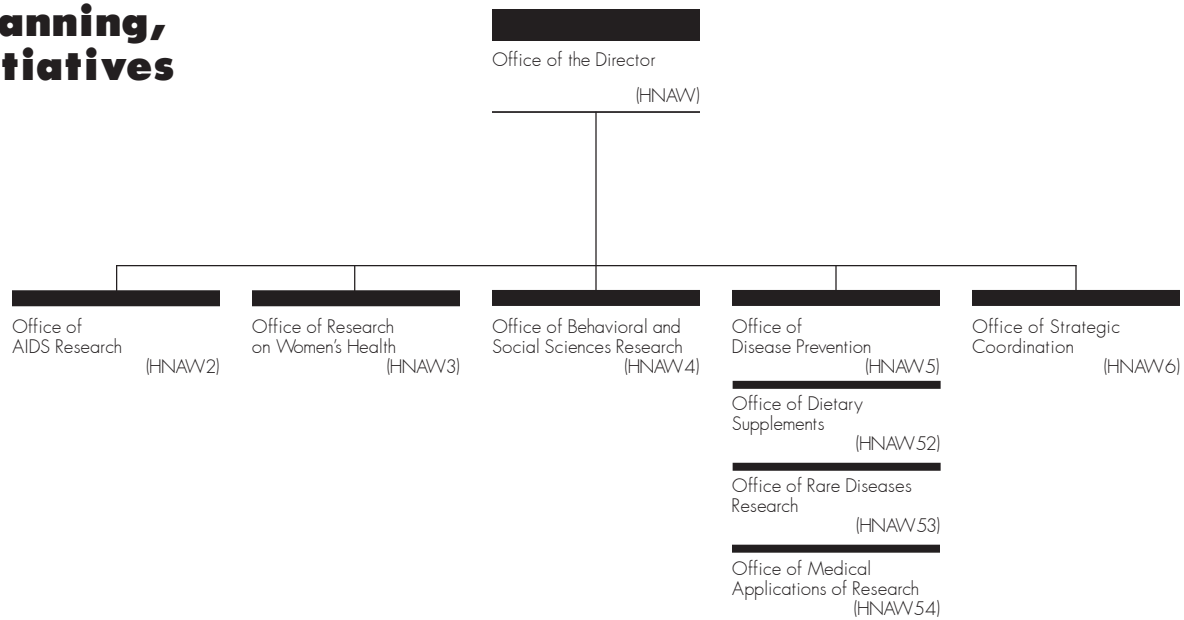


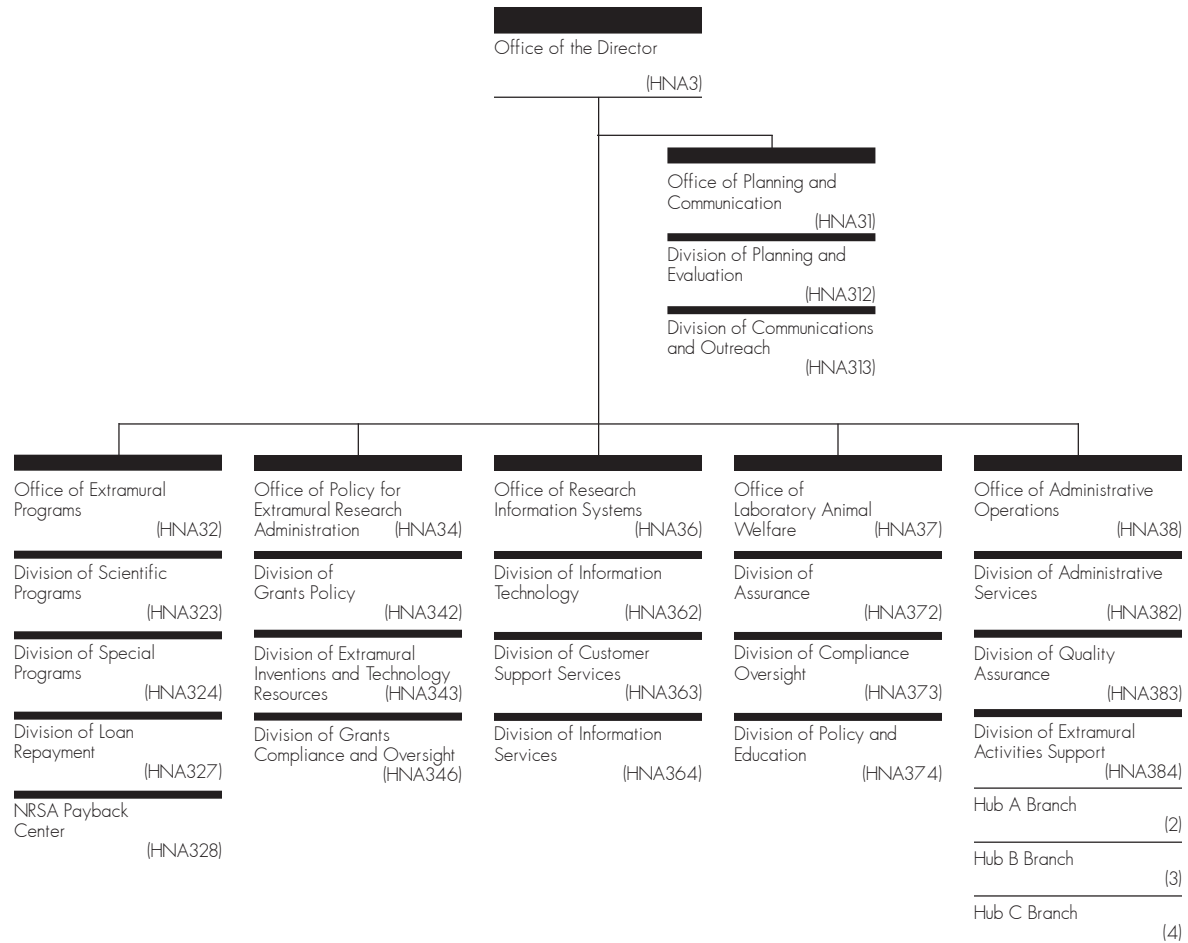
Office of the Director, NIH



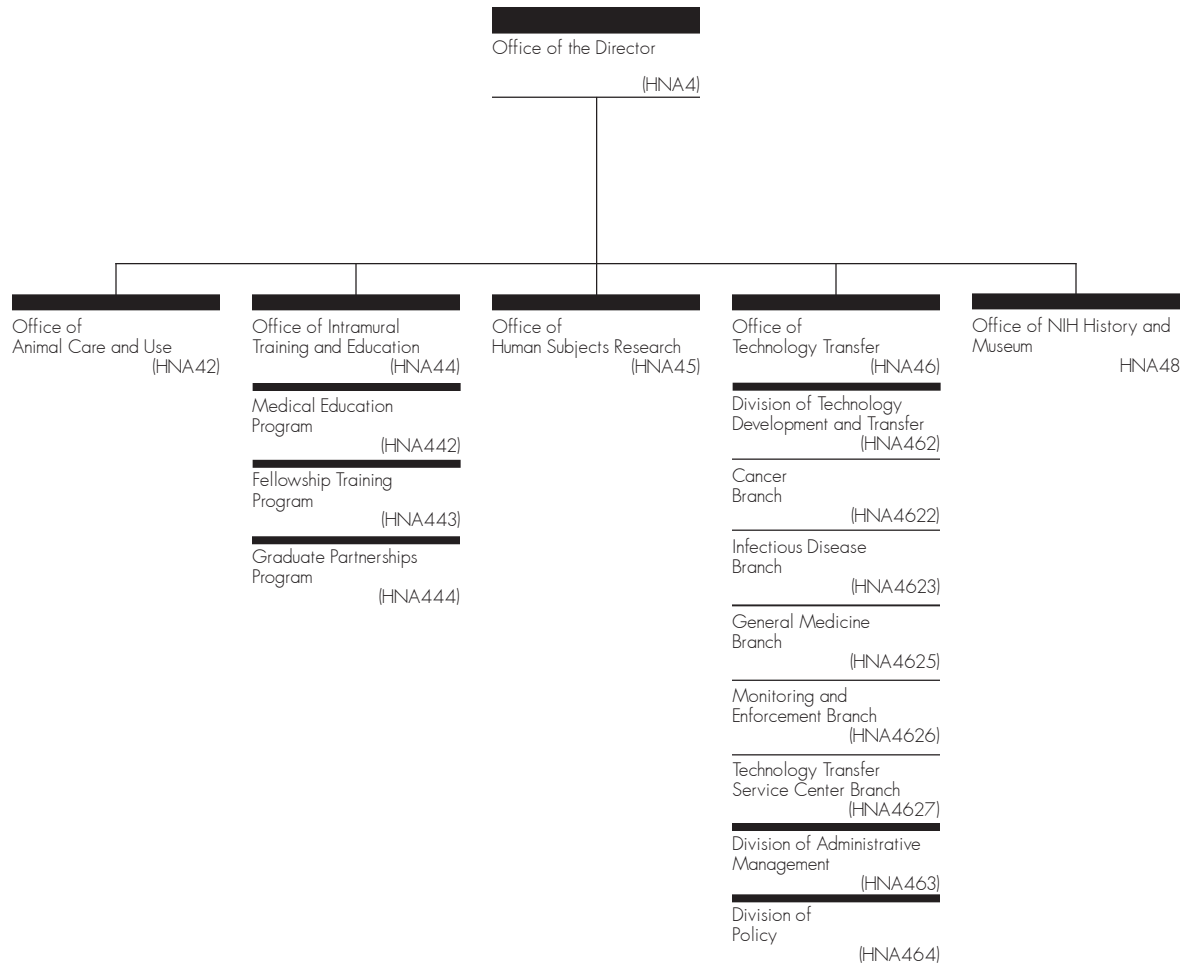
Division of Program Coordination, Planning, and Strategic Initiatives



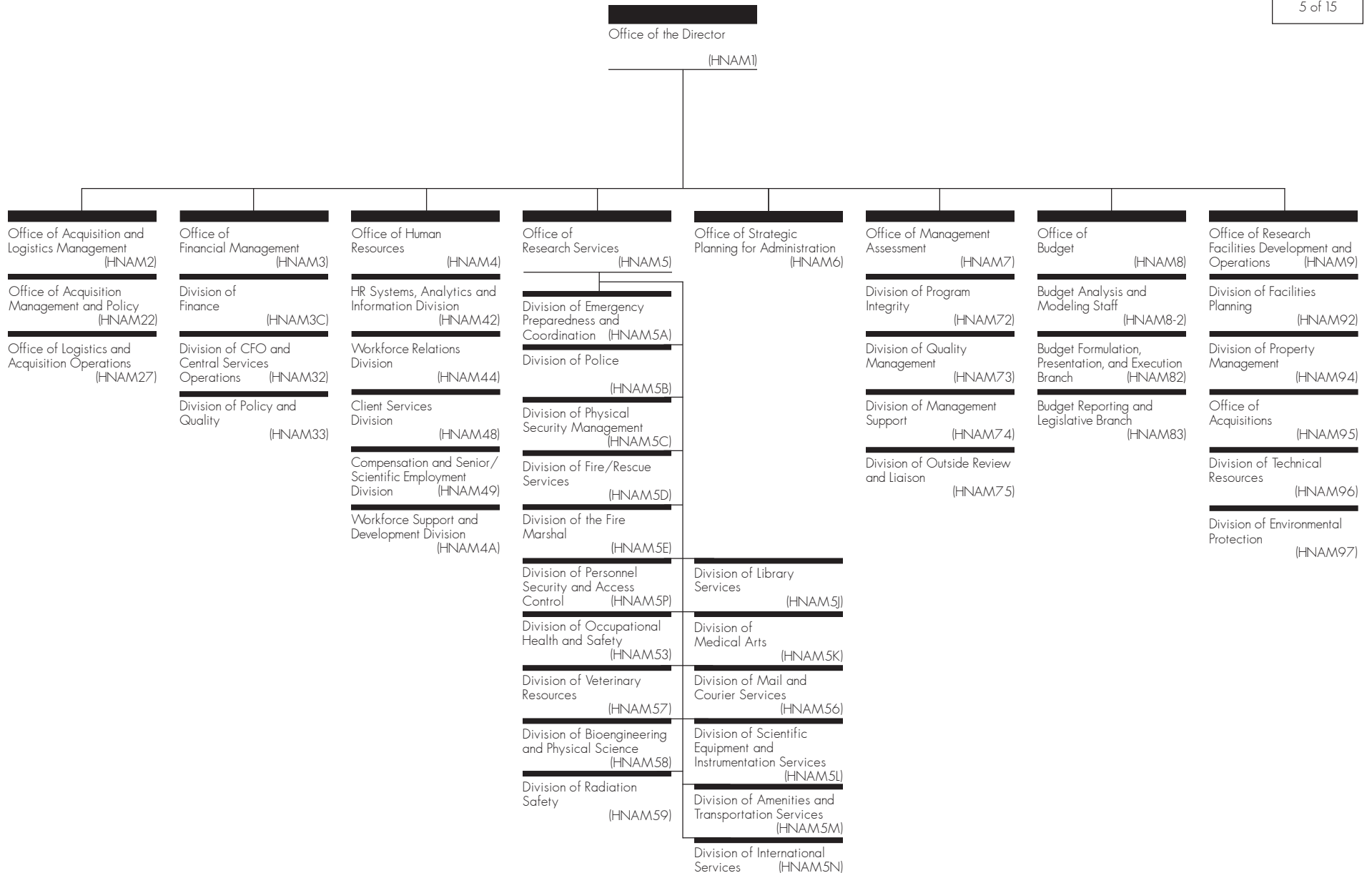
Office of Extramural Research



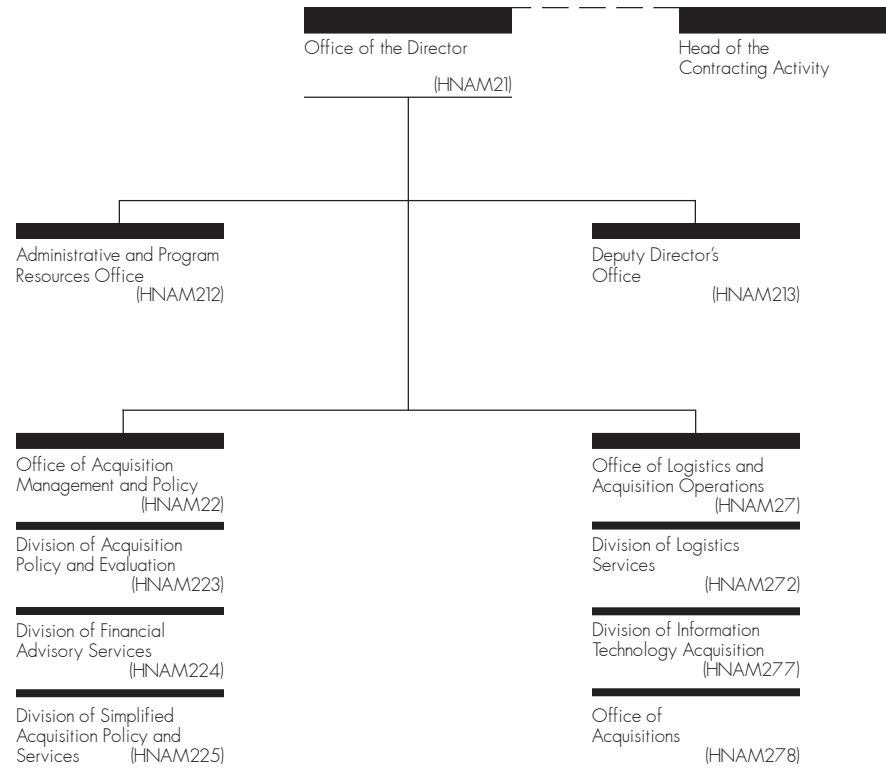
Office of Intramural Research



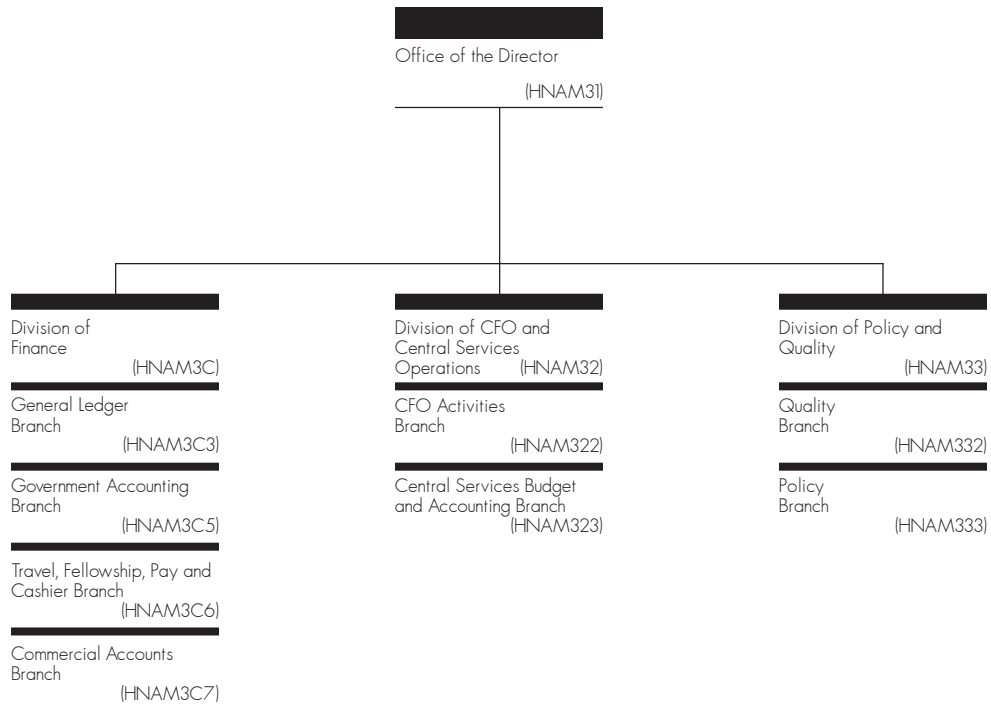
Office of Management



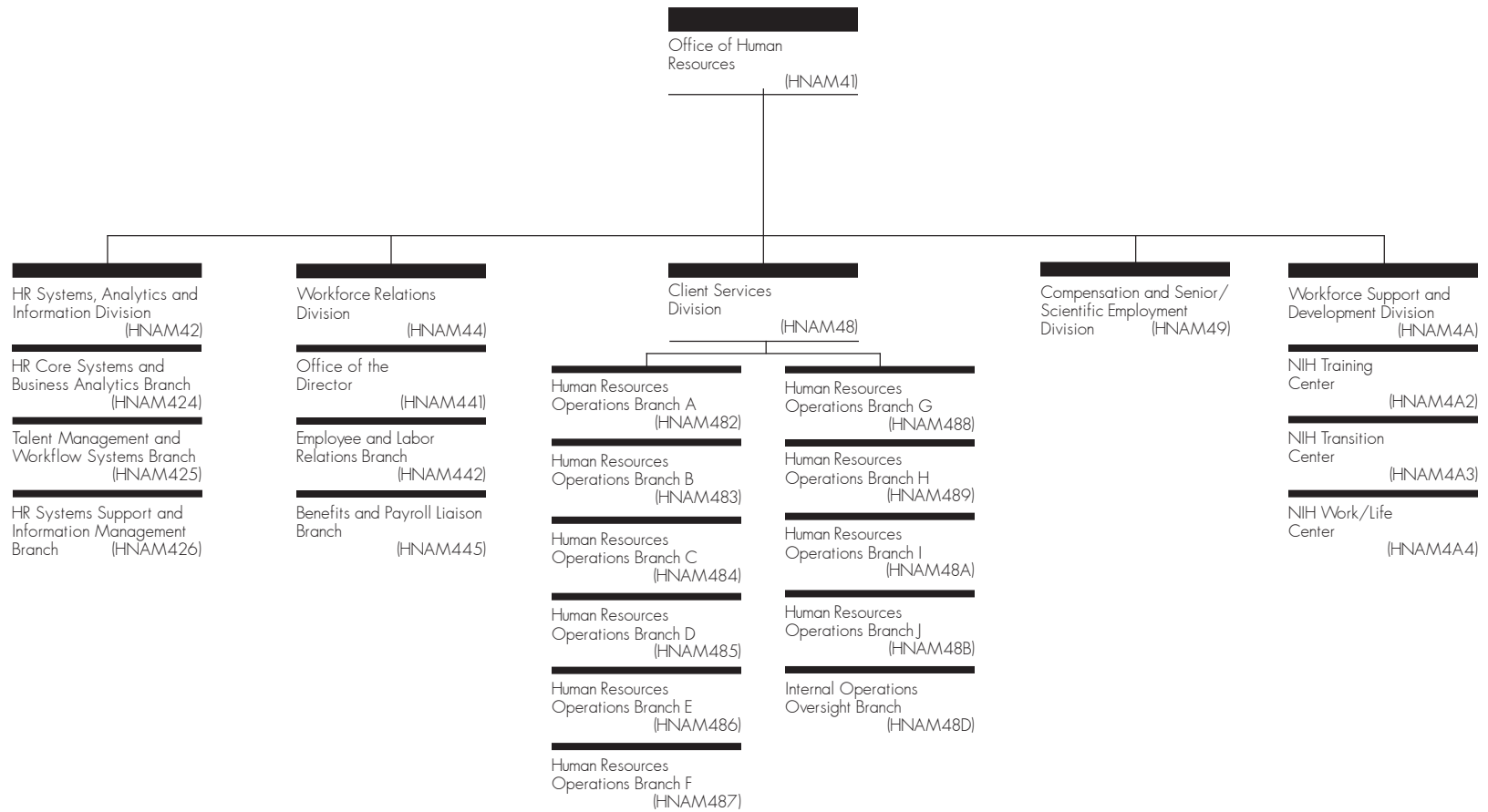
Office of Acquisition and Logistics Management



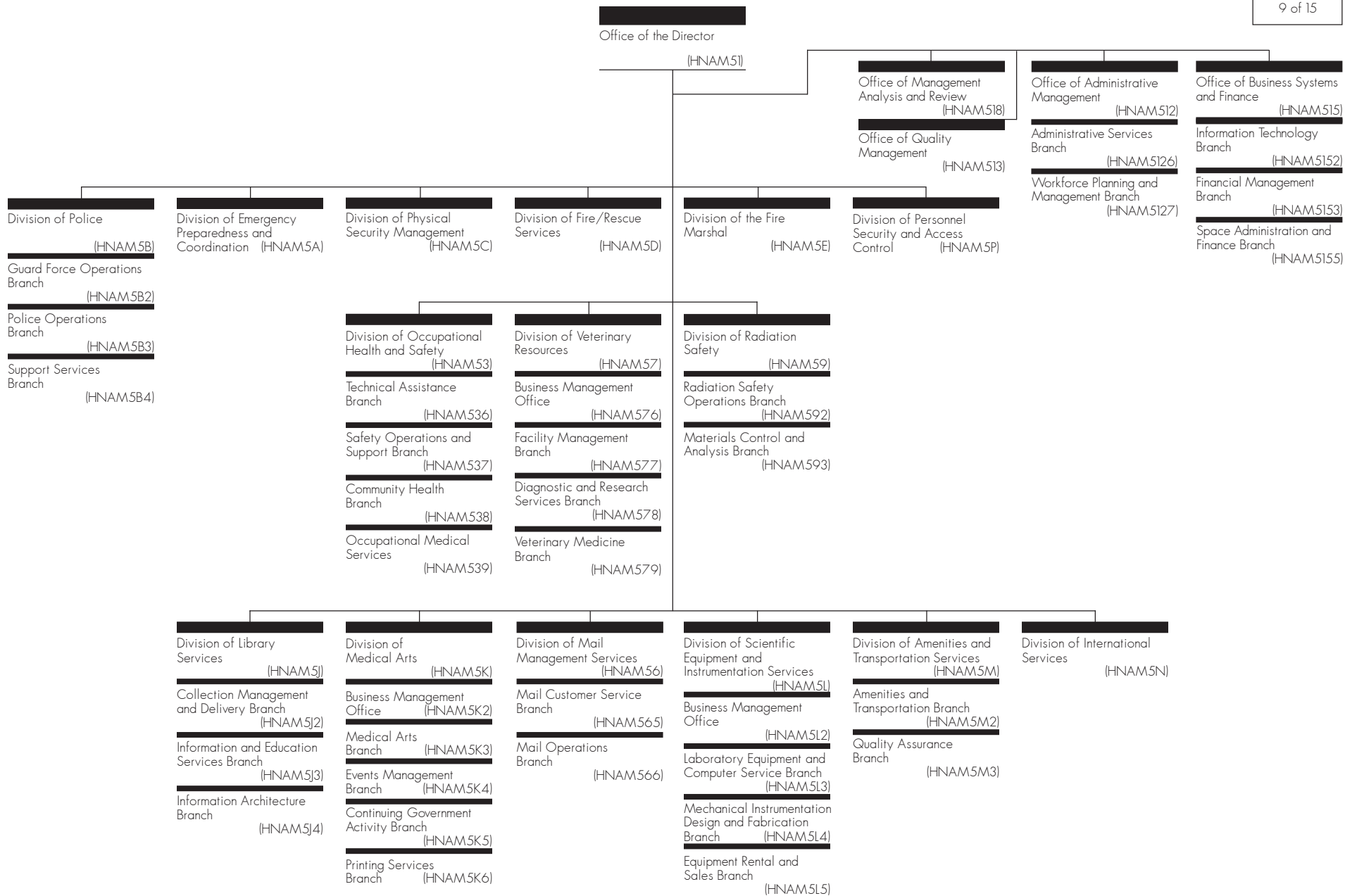
Office of Financial Management



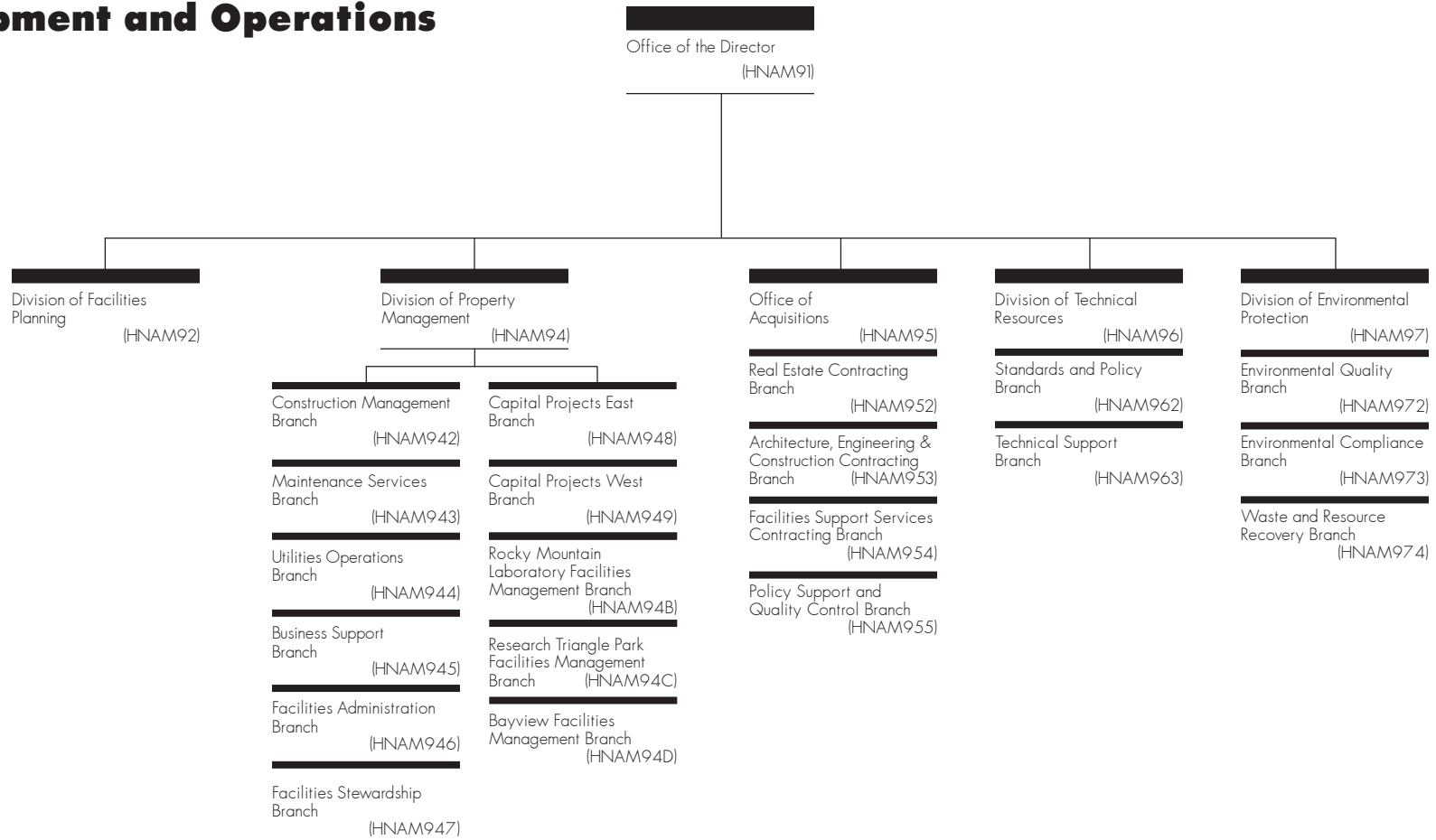
Office of Human Resources



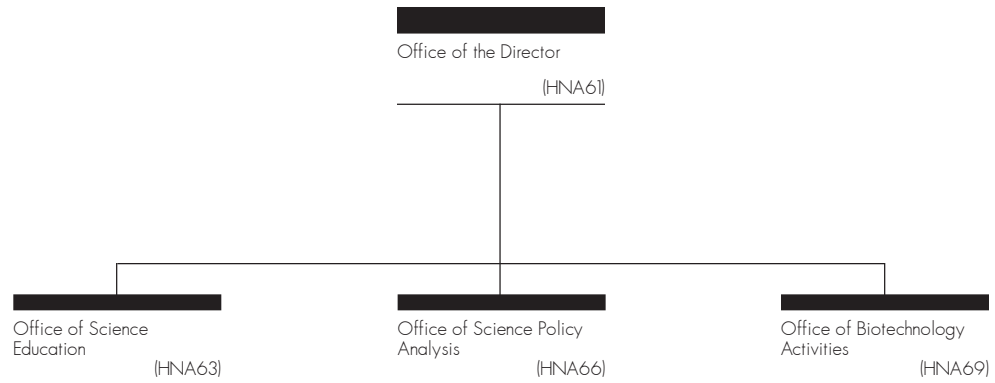
Office of Research Services



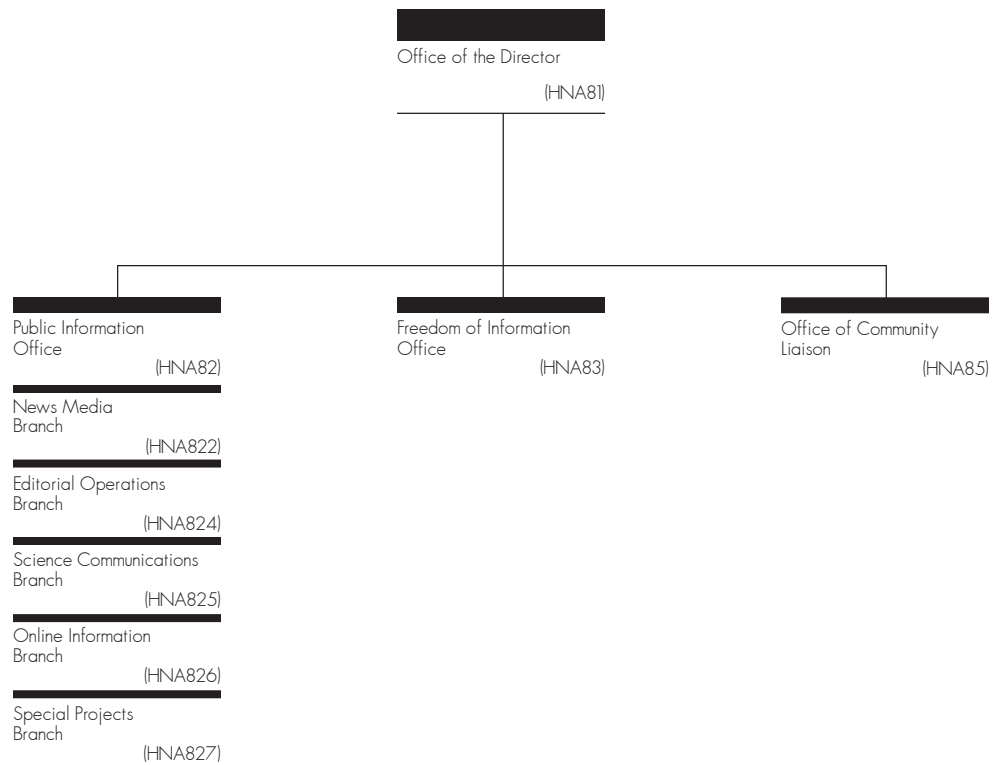
Office of Research Facilities Development and Operations



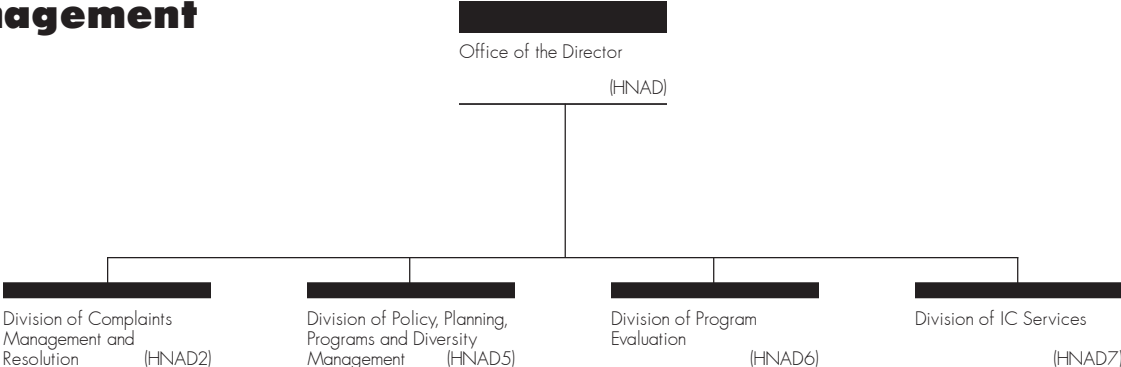
Office of Science Policy



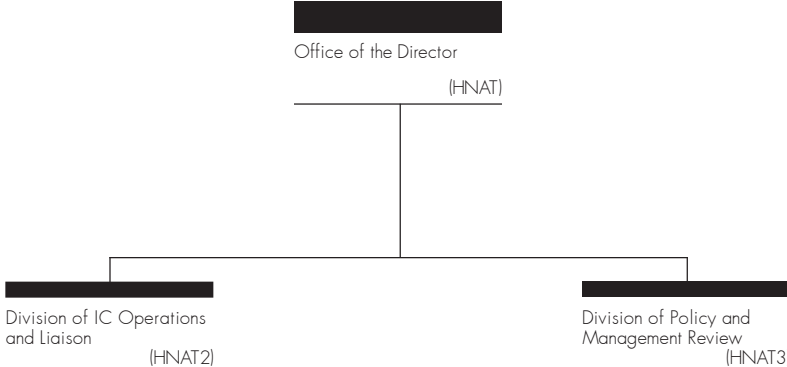
Office of Communications and Public Liaison



Office of Equal Opportunity and Diversity Management



NIH Ethics Office



Office of the Chief Information Officer

