

Analytical Database Products

Steve G. Lewis

NOAA Fisheries
Alaska Region
Analytical Team

Oct 15, 2007

Databases

- VMS Enabled Catch-In-Areas Database
 - By Statistical Area
 - By Closure Area (shapefile)
- Extrapolated Observer data –
 - Pollock Atka mackerel, P.cod, 1991-2005
- Extrapolated Observer data by 154 SSL sites
- Catch-By-Vessel database: 1995- 2002
- Visualizing the data

VMS Enabled Catch-In-Areas

- VMS Enabled Catch-In-Areas Database
- Replaces Catch-By-Vessel
 - By Statistical Area
 - State Statistical Area ~30nm
 - 20Kilometer Statistical Area
 - 10Kilometer Statistical Area
 - Closure Area
 - Transfers the Attributes of a shapefile to a the TXN data. Critical Habitat: 0-3 3-10 10-20 Forage other_RPA

Constructing VMS Enabled CIA

- Catch Accounting is out base data
 - Examples of data available::
 - Date
 - Target
 - Gear
 - Vessel and Processor ID
 - Species Caught
 - Program Code
 - Amount Caught
 - NMFS Reporting Area
 - The data stays the same, it is only split into smaller areas.

Constructing VMS Enabled CIA

Uses VMS and Observer data to apportion to Catch Accounting

- Step 1
 - Locks onto VMS records by vessel ID where the Date/Time from Obs data records match.

- Step 2
 - VMS records by Vessel Speed
 - > 1 knot and < 5 knots for Trawl
 - > 1 knot and < 4 knot HAL/POT/JIG

- Step 3
 - Uses Observer Data Deploy and Retrieve Points and Average Vessels from Step 1 to apportion catch

- Step 4
 - Uses Average Vessel based on VMS by Obs time stamps

VMS Vessels > 5 knots

- VMS Vessels captured by VMS speeds

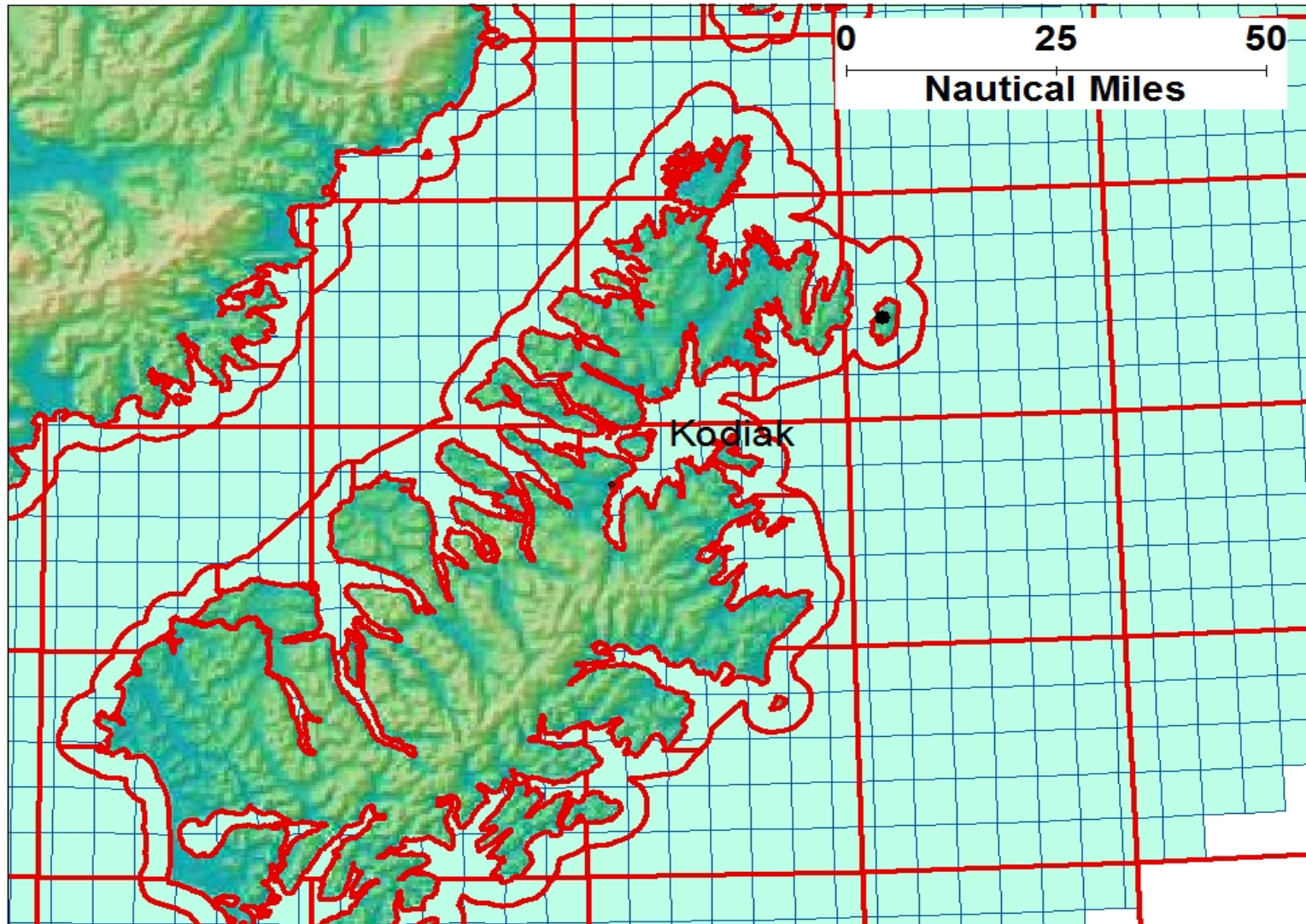


Redacted

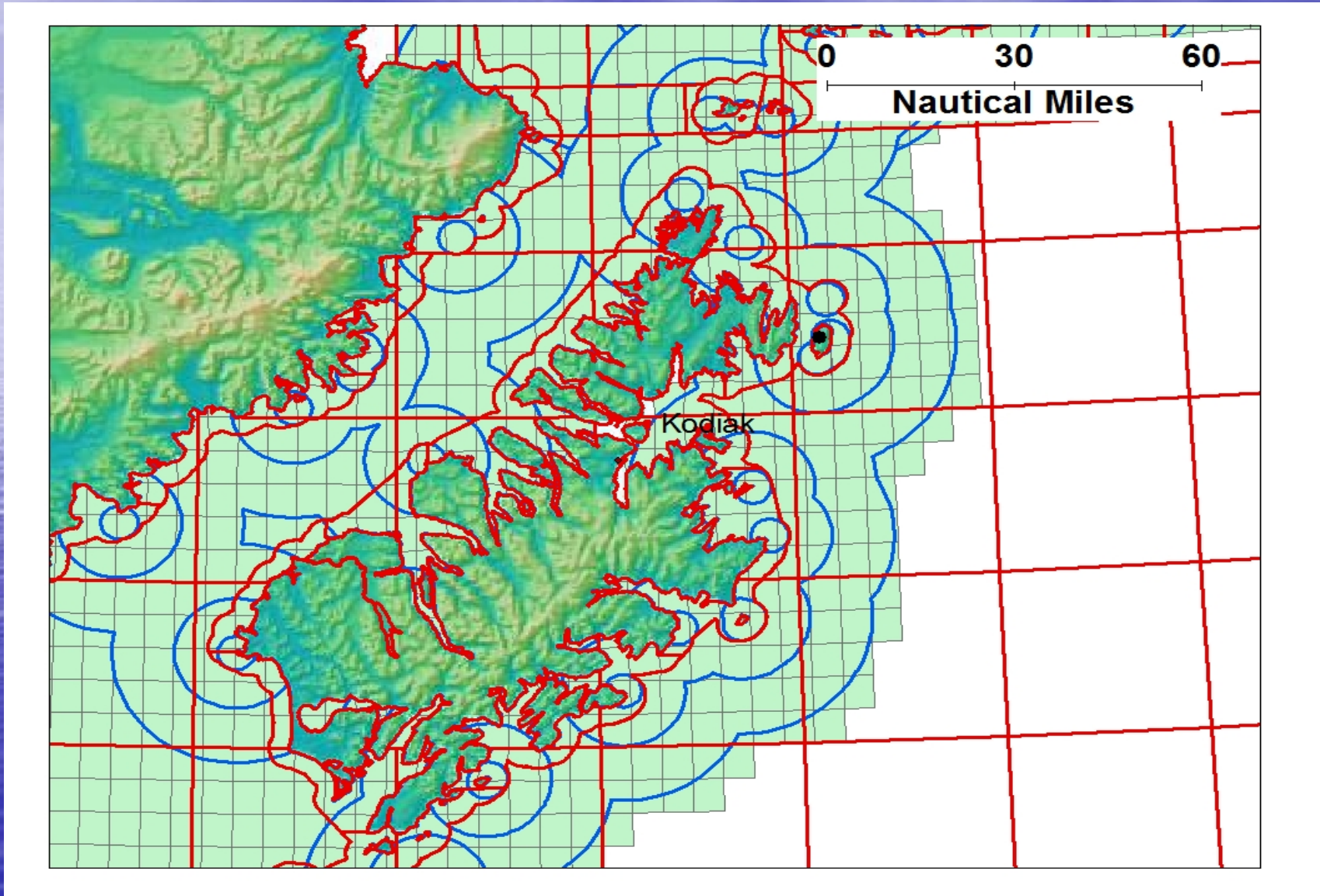
VMS Vessels > 1 and < 4.5 knots

- Redacted

10Km vs State Statistical Area



Critical Habitat Intersected with 10k & Stat Areas



Economic Data in VMS C-I-A

- First Wholesale Values are added to this dataset.
- ExVessel Prices are also added to this datasets
 - Allowing us to see a snapshot of the revenue at risk.

ReCap of VMS Enabled C-I-A

- Two Versions: Shapefile and Statistical Area.
 - Statistical Areas: 10km, 20km, ~30nm

ReCap of VMS Enabled C-I-A

- Versions 2: Transfers attributes from a GIS Shapefile
 - Will Transfer the attributes of a GIS Shapefile the Catch Accounting Data
 - Made to Order product and it not quick.
 - Take about 3 hours per year of data to process. *SSL Critical Habitat is complete 2003-2006*

Extrapolated Observer Data

- Extrapolated Obs Data: 1991 – 2005
 - Point data by Lat and Long
 - Dataset includes: Pollock, Atka mackerel and P.cod
 - Is quick to process.
 - Shows a trend through for 14 years.
- Drawbacks
 - Does not show unobserved vessel fleet
 - Difficult to put an economic value on effects of closures

Extrapolated Observer Data

- Extrapolated Obs Data:
 - Complete
 - In and Out of Critical Habitat (db)
 - In and Out of current Closures Areas (db, xls)
 - By SSL Site. Where the 20nm Buffers overlap, so does the catch.
 - Data is queryable by individual SSL site.

The Data

- Animated VMS-C-I-A Data

