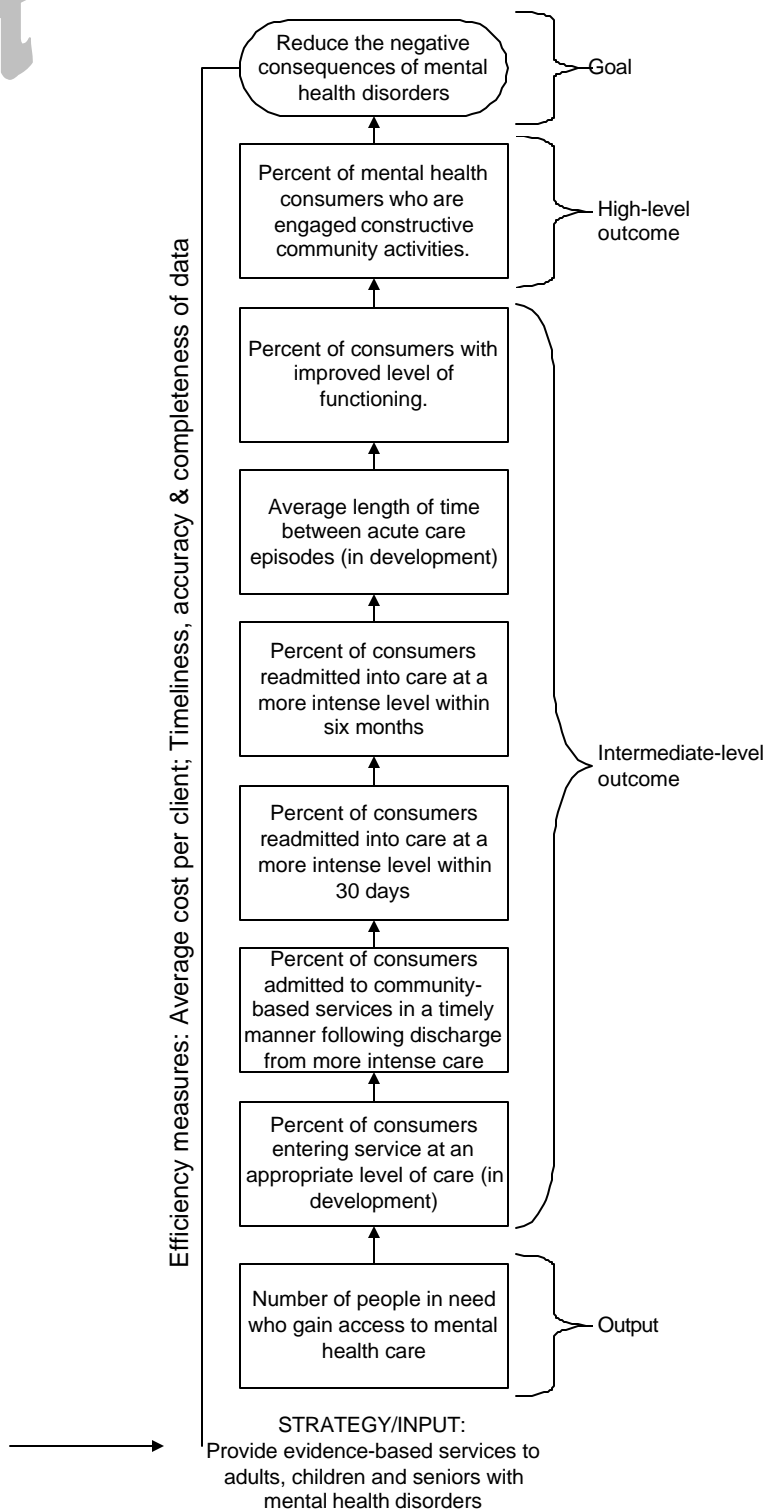


draft

# Proposed Logic Model Mental Health Services



## Mental Health Logic Model Measures Rationale and Detail

<b>High-Level Outcome</b>					
<b>The Measure</b>	<b>Description</b>	<b>Target</b>	<b>Why Important</b>	<b>Numerator/Denominator</b>	<b>Source of Data</b>
Community Integration	Percent of mental health consumers involved in activities that decrease dependence on the mental health system	Increase	Demonstrates the integration of consumers into community activities that are independent of the mental health system	<p><b>Numerator:</b> Number of consumers who are employed, enrolled in school or vocational training, or participating in self-help programs upon discharge from community-based treatment.</p> <p><b>Denominator:</b> Number of consumers who are discharged from community-based services.</p>	Work in Progress
<b>Intermediate-Level Outcomes</b>					
<b>The Measure</b>	<b>Description</b>	<b>Target</b>	<b>Why Important</b>	<b>Numerator/Denominator</b>	<b>Source of Data</b>
Level of Functioning	Percent of mental health consumers in community-based services with significantly improved level of function from admission to discharge	Increase	Demonstrates that consumers are receiving services that are targeted to increase level of functioning.	<p><b>Numerator:</b> Number of consumers who are discharged from community-based services with significantly improved GAF scores.</p> <p><b>Denominator:</b> Number of consumers who are discharged from community-based services.</p>	CPMS
Re-Hospitalization (Readmission)	Percent of mental health consumers who are psychiatrically re-hospitalized within 30 days and 180 days of discharge from acute care.	Decrease	Demonstrates effective and efficient use of limited acute care services.	<p><b>Numerator:</b> Number of readmissions to acute care hospital within 30 and within 180 days.</p> <p><b>Denominator:</b> Number of discharges from acute care to lower level of care.</p>	CPMS OPRCS MMIS

Timely follow up to Hospitalization	Percent of consumers who receive face-to-face services within seven days of discharge from acute care or state hospital.	Increase	Continuity of care is important to avoid recurrence of symptoms	<b>Numerator:</b> Number of consumers discharged from acute or state hospital who receive at least one face-to-face contact within seven days with a CMHP <b>Denominator:</b> Number of consumers discharged from acute care or state hospital	CPMS OPRCS MMIS
Length of time between treatment episodes					Work in Progress
Appropriate Placement	Percent of consumers who are placed in the appropriate level of care at start of service	Increase	Appropriate placement of consumers improves outcomes and demonstrates appropriate utilization of services.	<b>Numerator:</b> Number of consumers placed in appropriate level of care at start of treatment episode. <b>Denominator:</b> Number of treatment episodes started	Work in Progress
<b>Output</b>					
<b>The Measure</b>	<b>Description</b>	<b>Target</b>	<b>Why Important</b>	<b>Count</b>	<b>Source of Data</b>
Access	Number of consumers who access community-based services	Increase	Demonstrates that people are accessing services	Number of consumers who access community-based services	CPMS OPRCS MMIS