

FNAI
1018 Thomasville Road
Suite 200-C
Tallahassee, FL 32303
Phone: (850) 224-8207
Fax: (850) 681-9364

FLORIDA
Natural Areas
INVENTORY

FLORIDA INVASIVE PLANTS GEODATABASE

Mapping Invasive Plants on Florida's Conservation Lands

The Florida Natural Areas Inventory (FNAI) is contributing to the control of invasive plants by developing The Florida Invasive Plants Geodatabase (FLInv) to map exotic plant infestations on public conservation lands in Florida. Mapping invasive infestations is important because it allows development of management strategies which make the most efficient use of control resources.

The database is populated with existing data submitted by resource managers and supplemented by additional field surveys by Florida Natural Areas Inventory (FNAI) staff.

Why should your invasive plants be in FNAI's database?

- The FLInv database will ultimately be used as a management tool to allocate invasive species control resources within the state
- FNAI will document invasive plants in a standardized GIS format including detailed characteristics of infestations in addition to their location
- FNAI has prepared a suite of forms, templates, and data dictionaries that can be used to quickly document infestations
- FNAI accepts data in a variety of standardized formats that can include infestations mapped using polygons and lines in addition to points
- FNAI biologists can assist with invasive plant identification, surveying, and mapping

To Contribute Data:

Download the FLInv Data Collection.zip file from the FNAI website and contact FNAI for assistance

<http://www.fnai.org/invasivespecies.cfm>

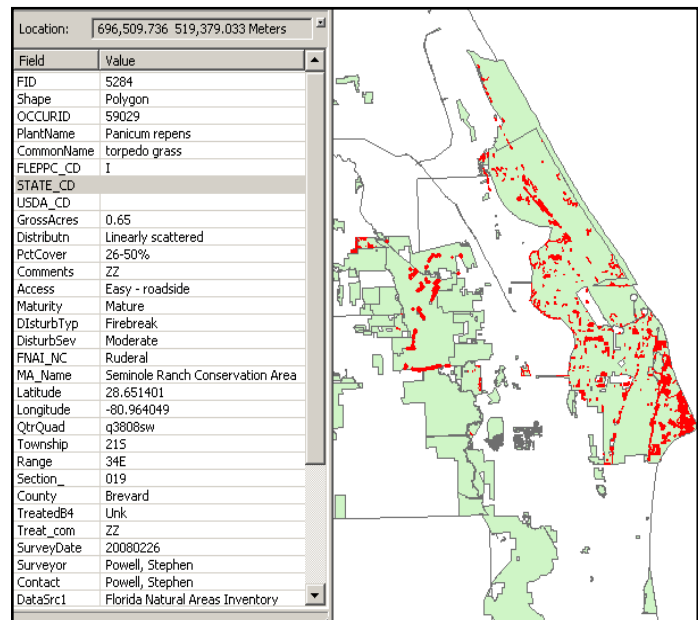
To Obtain Existing Data:

View data from quarterly updates of the geodatabase for species designated as Category I and II Invasives by the Florida Exotic Pest Plant Council on the iMapInvasives website:

<http://www.imapinvasives.org/>

Download public shapefiles containing this same data from FNAI's website:

<http://www.fnai.org/invasivespecies.cfm>



Sample data



Project funding is provided by the Invasive Plant Management Section within the Division of Habitat and Species Conservation of the Florida Fish and Wildlife Conservation Commission.

