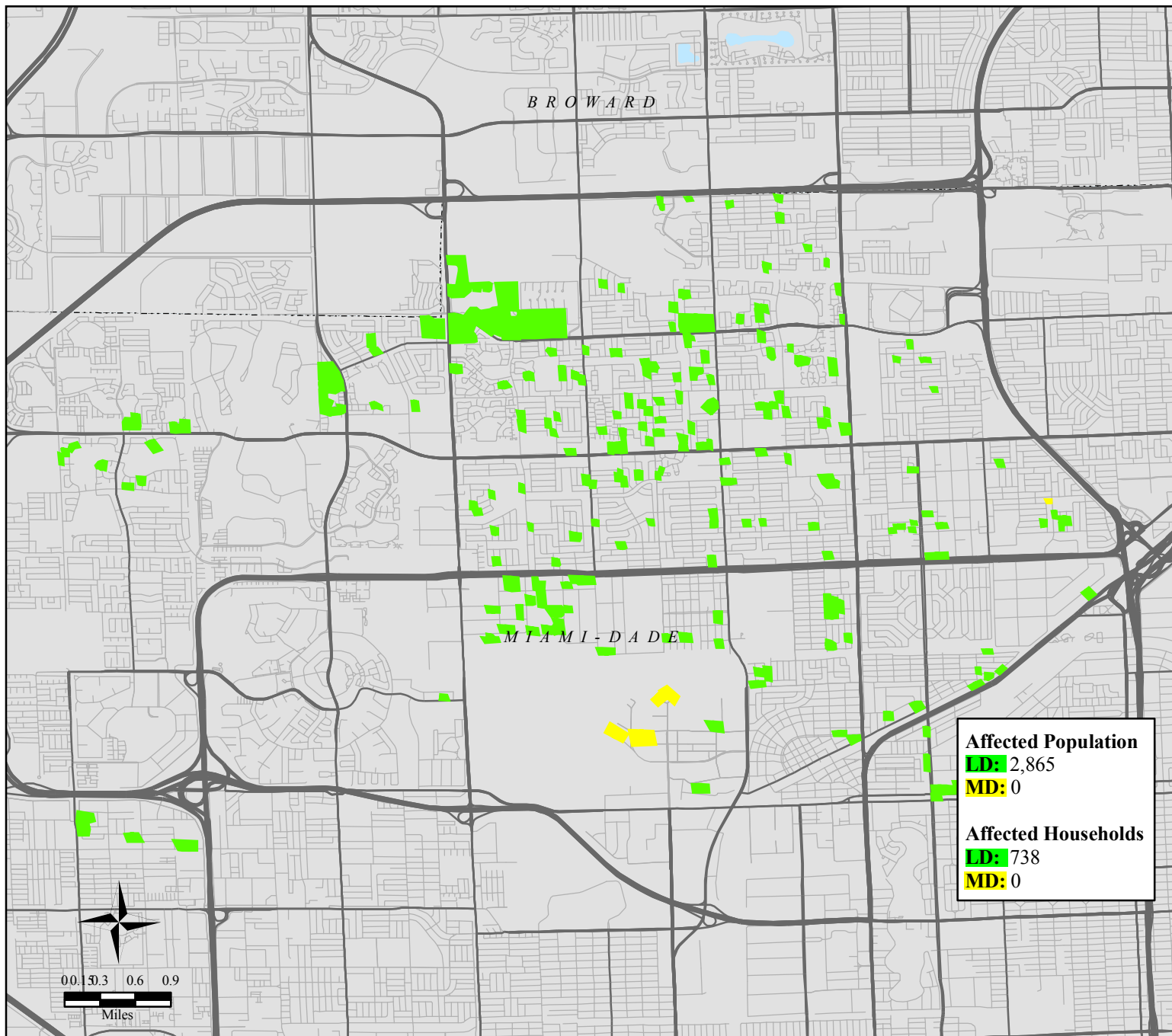
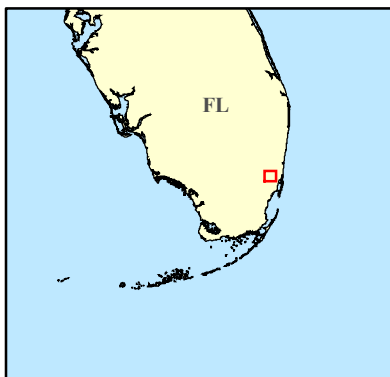


# FEMA-1609-DR, Miami-Dade County, Florida - Imagery Derived Assessment as reported 10/27/05 14:00:00 EDT



<b>Affected Population</b>	
<b>LD:</b>	2,865
<b>MD:</b>	0
<b>Affected Households</b>	
<b>LD:</b>	738
<b>MD:</b>	0

## Location Map



## Legend

- **LIMITED DAMAGE (LD):** Generally superficial damage to solid structures (e.g., loss of tiles or roof shingles); some mobile homes and light structures are damaged or displaced.
- **MODERATE DAMAGE (MD):** Solid structures sustain exterior damage (e.g., missing roofs or roof segments); some mobile homes and light structures are destroyed, many are damaged or displaced.

- Major Highways
- Secondary Highways
- Streets



**FEMA**

ITS Mapping and Analysis Center  
Washington, DC  
10/28/05 -- 06:00:00 EDT