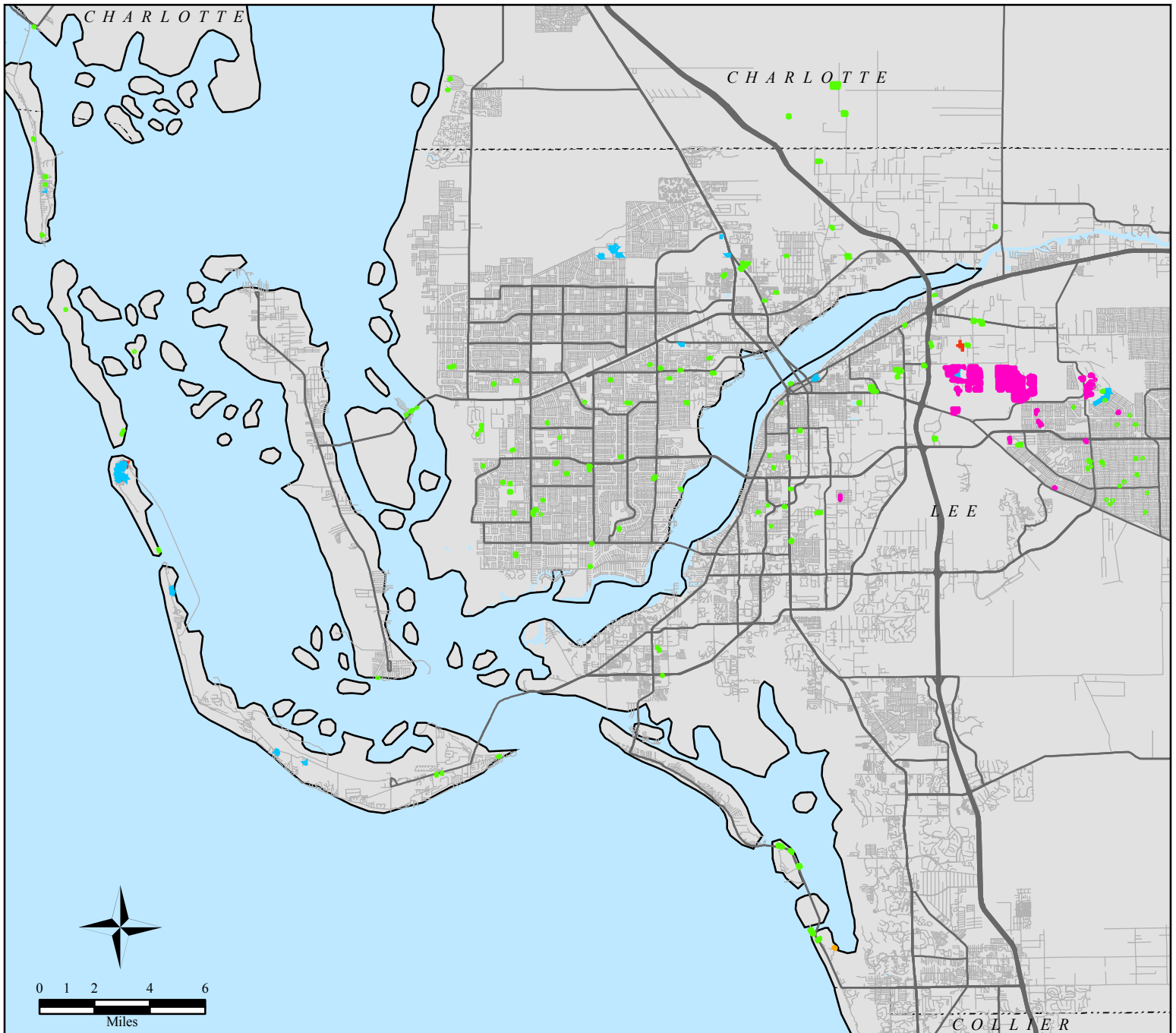
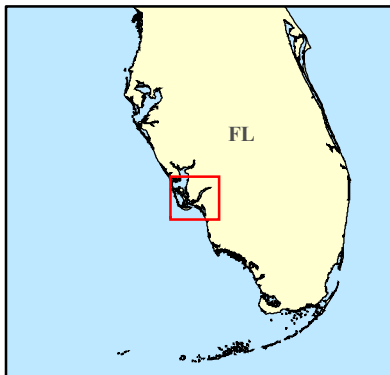


FEMA-1609-DR, Florida - Imagery Derived Assessment Lee and Charlotte Counties as reported 10/26/05 14:00:00 EDT



Location Map



Legend

- **LIMITED DAMAGE (LD)**: Generally superficial damage to solid structures (e.g., loss of tiles or roof shingles); some mobile homes and light structures are damaged or displaced.
- **MODERATE DAMAGE (MD)**: Solid structures sustain exterior damage (e.g., missing roofs or roof segments); some mobile homes and light structures are destroyed, many are damaged or displaced.
- **EXTENSIVE DAMAGE (ED)**: Some solid structures are destroyed; most sustain exterior and interior damage (e.g., roofs missing, interior walls exposed), most mobile homes and light structures are destroyed.
- **FLOODED AREAS (FL)**
- **SATURATED AREAS (SA)**
- **IMPASSABLE ROADS**

- Major Highways
- Secondary Highways
- Streets



FEMA

ITS Mapping and Analysis Center
Washington, DC
10/26/05 -- 21:15:00 EDT