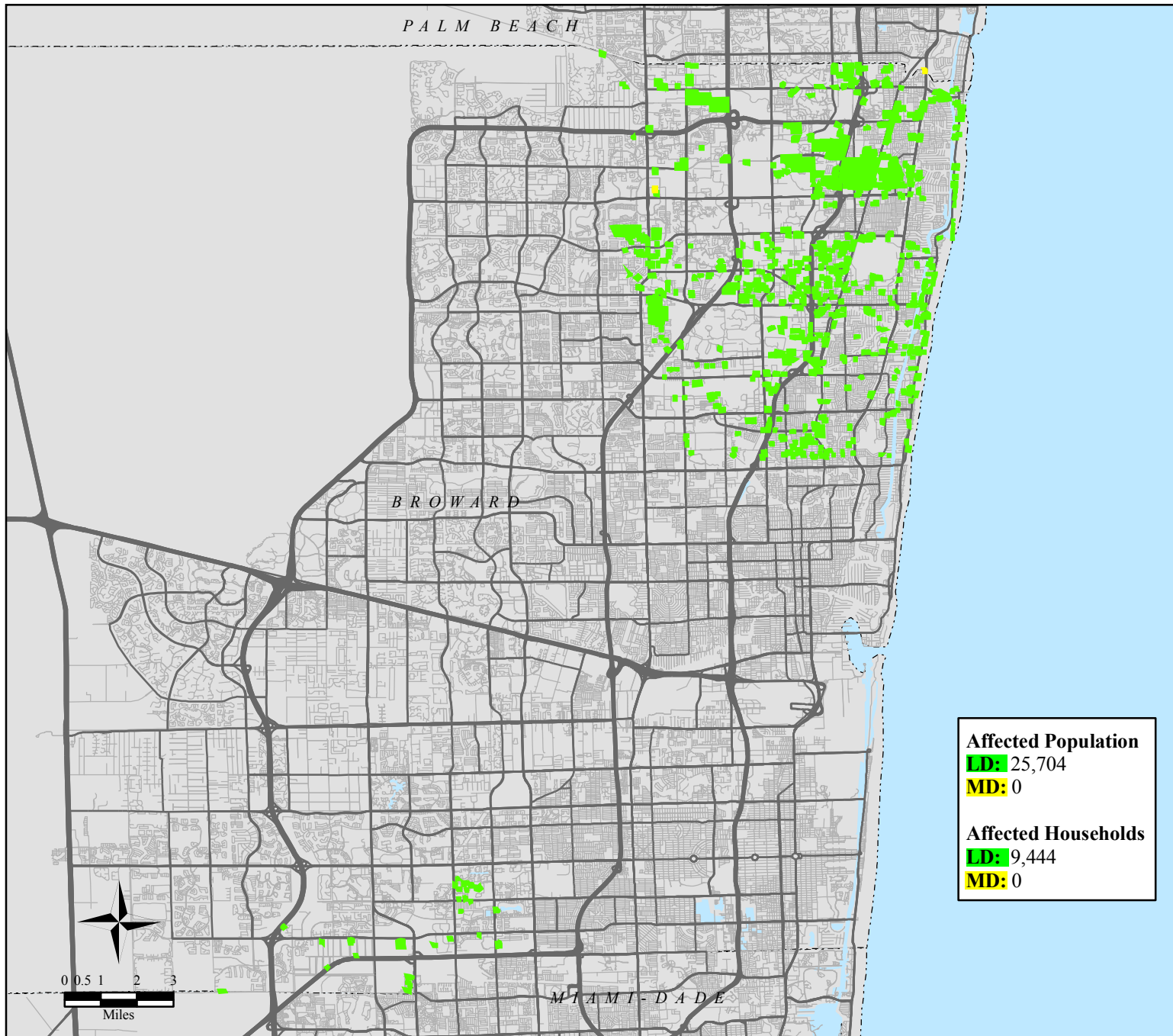
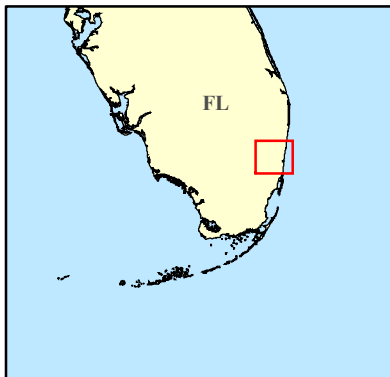


FEMA-1609-DR, Broward County, Florida - Imagery Derived Assessment as reported 10/27/05 14:00:00 EDT



Location Map



Legend

- **LIMITED DAMAGE (LD):** Generally superficial damage to solid structures (e.g., loss of tiles or roof shingles); some mobile homes and light structures are damaged or displaced.
- **MODERATE DAMAGE (MD):** Solid structures sustain exterior damage (e.g., missing roofs or roof segments); some mobile homes and light structures are destroyed, many are damaged or displaced.

- Major Highways
- Secondary Highways
- Streets



FEMA

ITS Mapping and Analysis Center
 Washington, DC
 10/28/05 -- 03:45:00 EDT