



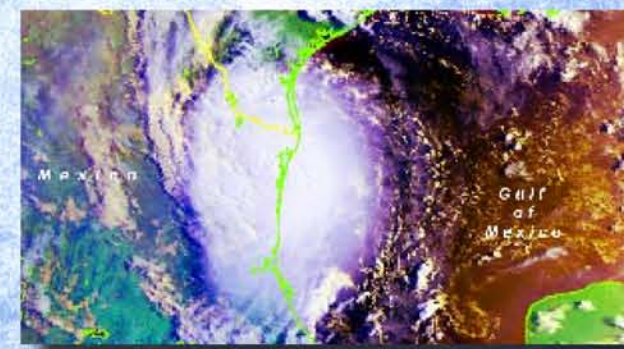
2003 TROPICAL CYCLONES OF THE WORLD



Ocean Basin: Atlantic Name: Claudette Date: Jul 06-16 Max Winds (kts): 70 Lowest Pressure (mb): 981 Storm Position (nearest degree): 21N 97W



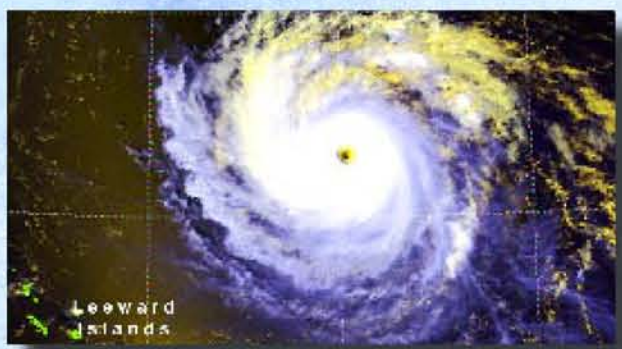
Ocean Basin: Atlantic Name: Danny Date: Jul 16-20 Max Winds (kts): 65 Lowest Pressure (mb): 1005 Storm Position (nearest degree): 41N 48W



Ocean Basin: Atlantic Name: Erika Date: Aug 14-17 Max Winds (kts): 65 Lowest Pressure (mb): 986 Storm Position (nearest degree): 24N 63W



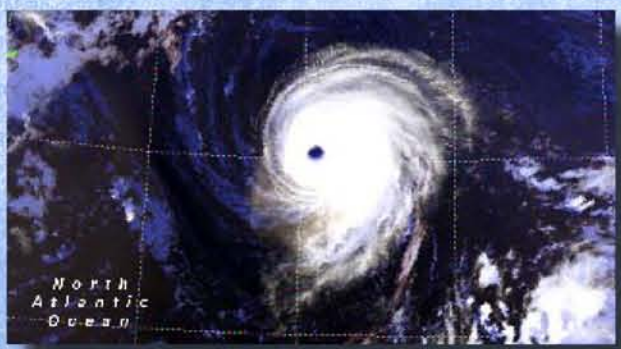
Ocean Basin: Atlantic Name: Fabian Date: Aug 27 - Sep 08 Max Winds (kts): 125 Lowest Pressure (mb): 939 Storm Position (nearest degree): 23N 63W



Ocean Basin: Atlantic Name: Isabel Date: Sep 04-19 Max Winds (kts): 140 Lowest Pressure (mb): 920 Storm Position (nearest degree): 22N 64W



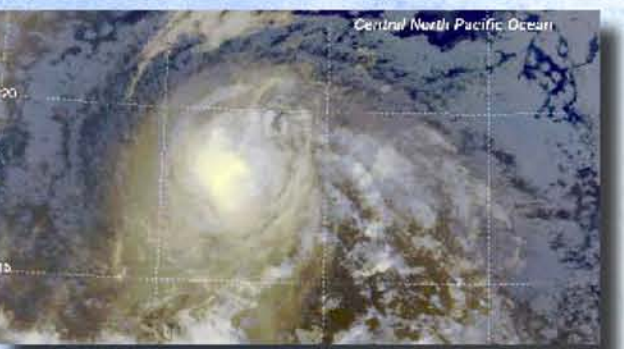
Ocean Basin: Atlantic Name: Juan Date: Sep 25-29 Max Winds (kts): 90 Lowest Pressure (mb): 970 Storm Position (nearest degree): 36N 63W



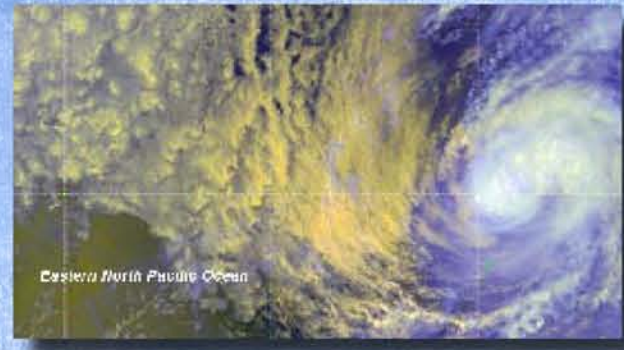
Ocean Basin: Atlantic Name: Kate Date: Sep 25 - Oct 07 Max Winds (kts): 110 Lowest Pressure (mb): 952 Storm Position (nearest degree): 30N 64W



Ocean Basin: Eastern Pacific Name: Ignacio Date: Aug 22-27 Max Winds (kts): 90 Lowest Pressure (mb): 970 Storm Position (nearest degree): 23N 109W



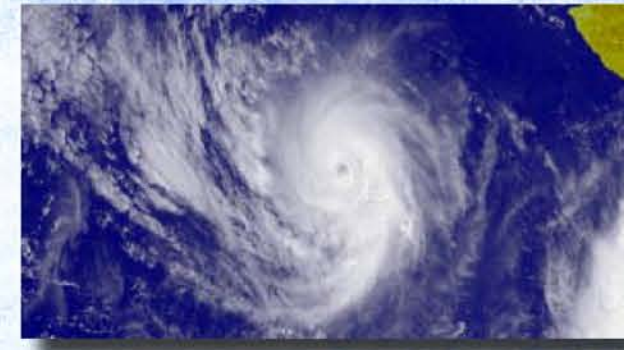
Ocean Basin: Eastern Pacific Name: Jimena Date: Aug 28 - Sep 05 Max Winds (kts): 90 Lowest Pressure (mb): 970 Storm Position (nearest degree): 17N 148W



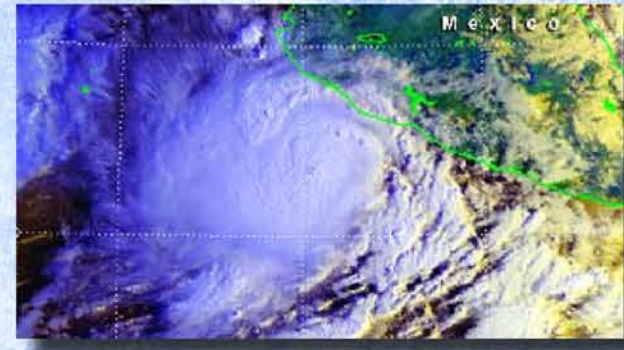
Ocean Basin: Eastern Pacific Name: Linda Date: Sep 14-17 Max Winds (kts): 85 Lowest Pressure (mb): 987 Storm Position (nearest degree): 20N 113W



Ocean Basin: Eastern Pacific Name: Marly Date: Sep 19-24 Max Winds (kts): 80 Lowest Pressure (mb): 970 Storm Position (nearest degree): 22N 109W



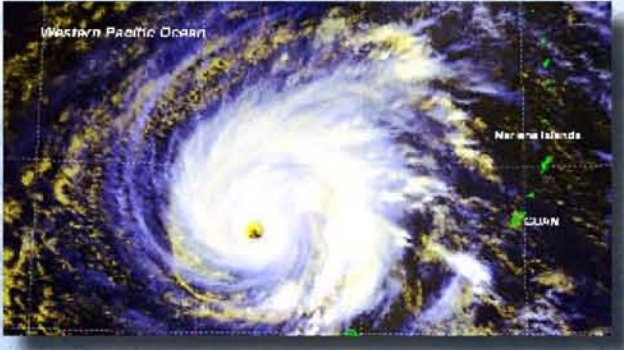
Ocean Basin: Eastern Pacific Name: Nora Date: Oct 01-09 Max Winds (kts): 90 Lowest Pressure (mb): 969 Storm Position (nearest degree): 17N 112W



Ocean Basin: Eastern Pacific Name: Olaf Date: Oct 03-08 Max Winds (kts): 85 Lowest Pressure (mb): 987 Storm Position (nearest degree): 17N 104W



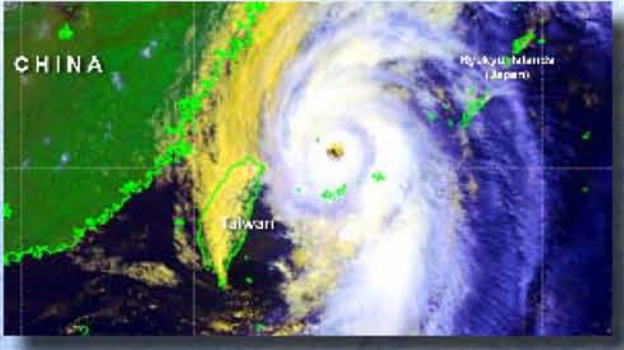
Ocean Basin: Eastern Pacific Name: Patricia Date: Oct 20-26 Max Winds (kts): 70 Lowest Pressure (mb): 984 Storm Position (nearest degree): 12N 105W



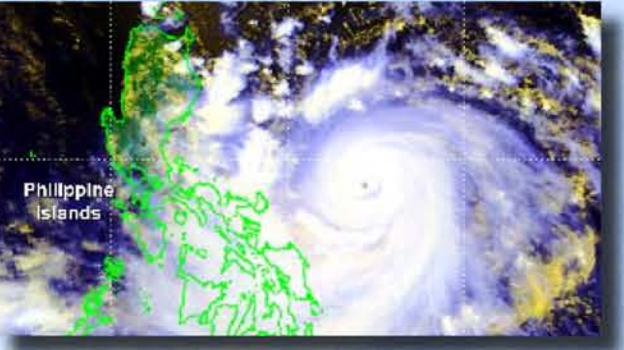
Ocean Basin: Western Pacific Name: Kujira Date: Aug 09-25 Max Winds (kts): 135 Lowest Pressure (mb): 930 Storm Position (nearest degree): 13N 136E



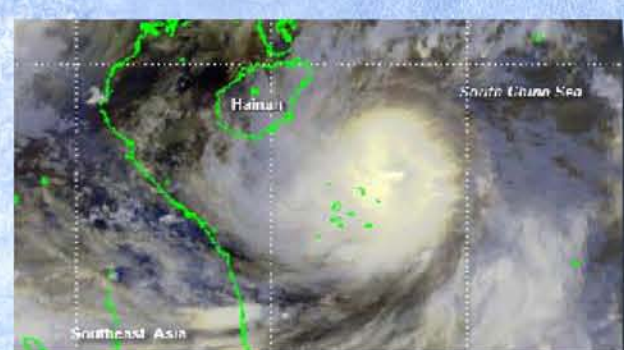
Ocean Basin: Western Pacific Name: Chan Hom Date: May 19-27 Max Winds (kts): 90 Lowest Pressure (mb): 940 Storm Position (nearest degree): 16N 152E



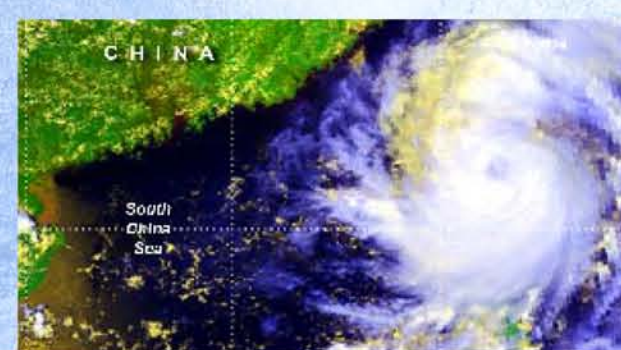
Ocean Basin: Western Pacific Name: Soudelor Date: Jun 11-19 Max Winds (kts): 115 Lowest Pressure (mb): 955 Storm Position (nearest degree): 24N 124E



Ocean Basin: Western Pacific Name: Imbudo Date: Jul 16-24 Max Winds (kts): 125 Lowest Pressure (mb): 935 Storm Position (nearest degree): 13N 129E



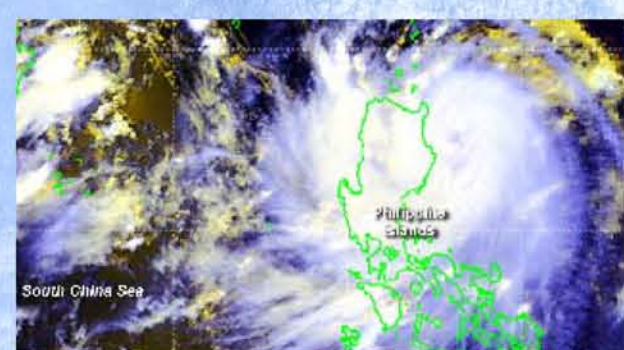
Ocean Basin: Western Pacific Name: Koni Date: Jul 18-22 Max Winds (kts): 85 Lowest Pressure (mb): 975 Storm Position (nearest degree): 17N 114E



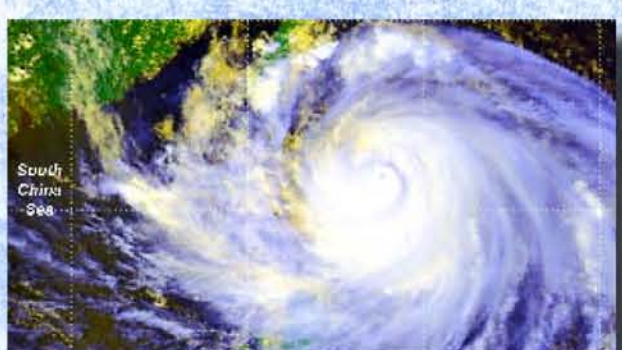
Ocean Basin: Western Pacific Name: Morakot Date: Aug 01-05 Max Winds (kts): 90 Lowest Pressure (mb): 992 Storm Position (nearest degree): 23N 121E



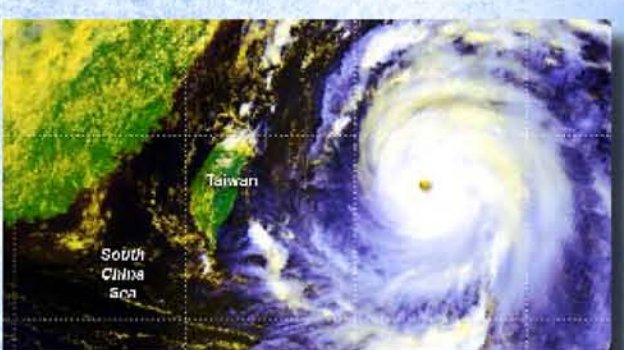
Ocean Basin: Western Pacific Name: Etou Date: Aug 03-09 Max Winds (kts): 110 Lowest Pressure (mb): 945 Storm Position (nearest degree): 27N 129E



Ocean Basin: Western Pacific Name: Krovnan Date: Aug 15-23 Max Winds (kts): 90 Lowest Pressure (mb): 970 Storm Position (nearest degree): 17N 124E



Ocean Basin: Western Pacific Name: Dujan Date: Aug 30 - Sep 03 Max Winds (kts): 125 Lowest Pressure (mb): 950 Storm Position (nearest degree): 21N 122E



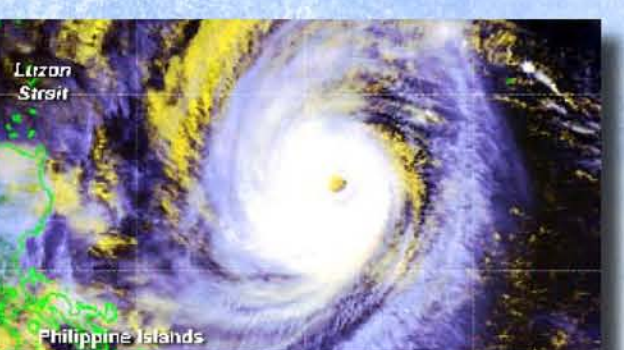
Ocean Basin: Western Pacific Name: Maomi Date: Sep 05-13 Max Winds (kts): 150 Lowest Pressure (mb): 910 Storm Position (nearest degree): 23N 127E



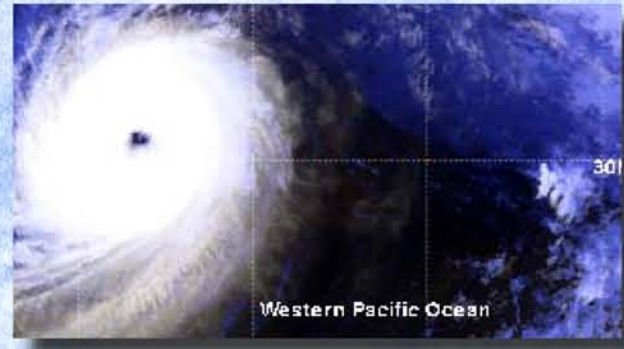
Ocean Basin: Western Pacific Name: Chai Wan Date: May 19-27 Max Winds (kts): 115 Lowest Pressure (mb): 955 Storm Position (nearest degree): 31N 137E



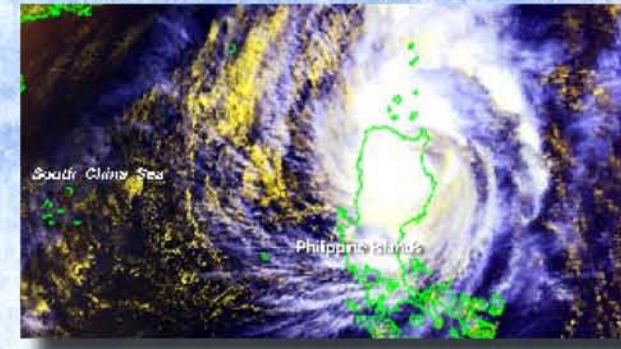
Ocean Basin: Western Pacific Name: Koppu Date: Sep 24-30 Max Winds (kts): 80 Lowest Pressure (mb): 940 Storm Position (nearest degree): 24N 141E



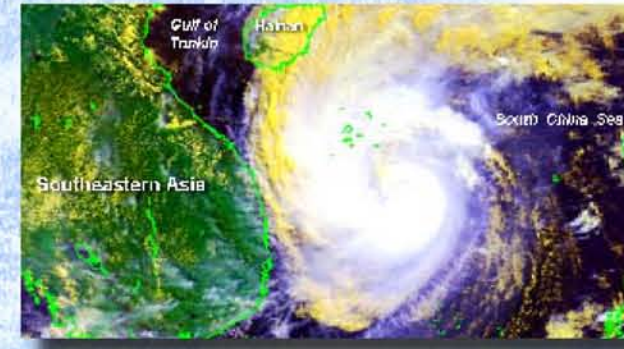
Ocean Basin: Western Pacific Name: Ketsaba Date: Oct 18-24 Max Winds (kts): 125 Lowest Pressure (mb): 940 Storm Position (nearest degree): 17N 131E



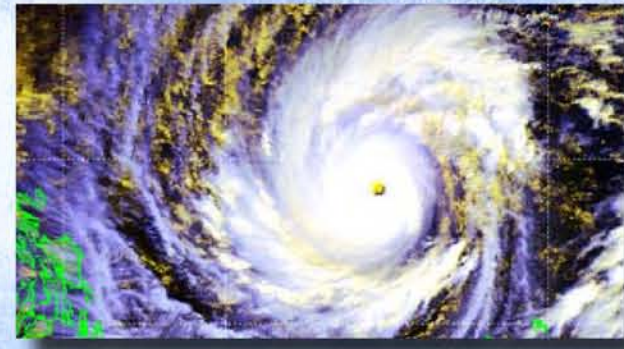
Ocean Basin: Western Pacific Name: Parma Date: Oct 20-31 Max Winds (kts): 130 Lowest Pressure (mb): 930 Storm Position (nearest degree): 30N 159E



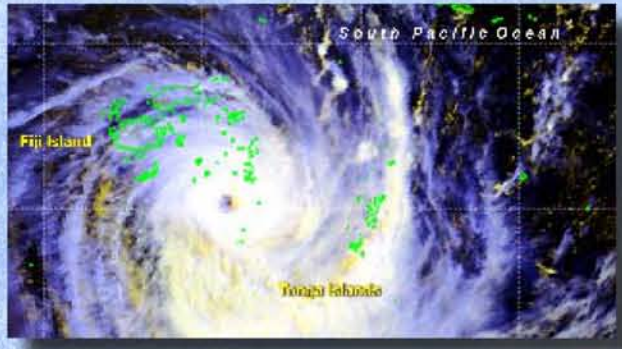
Ocean Basin: Western Pacific Name: Melor Date: Oct 30 - Nov 04 Max Winds (kts): 75 Lowest Pressure (mb): 980 Storm Position (nearest degree): 17N 122E



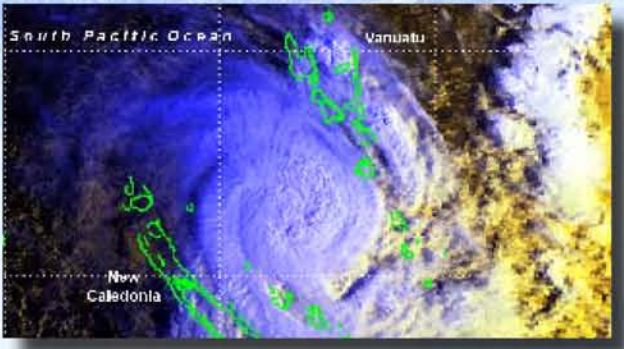
Ocean Basin: Western Pacific Name: Nepartak Date: Nov 13-19 Max Winds (kts): 75 Lowest Pressure (mb): 970 Storm Position (nearest degree): 14N 113E



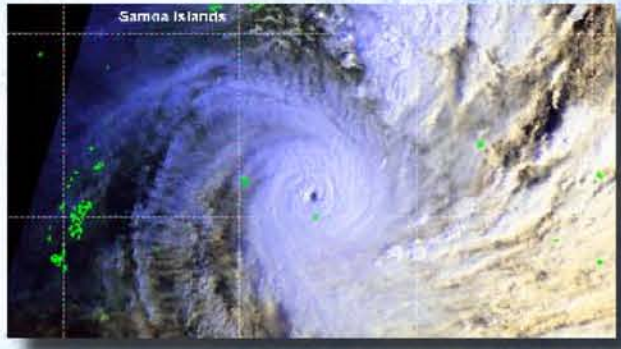
Ocean Basin: Western Pacific Name: Lupit Date: Nov 19 - Dec 01 Max Winds (kts): 145 Lowest Pressure (mb): 915 Storm Position (nearest degree): 14N 135E



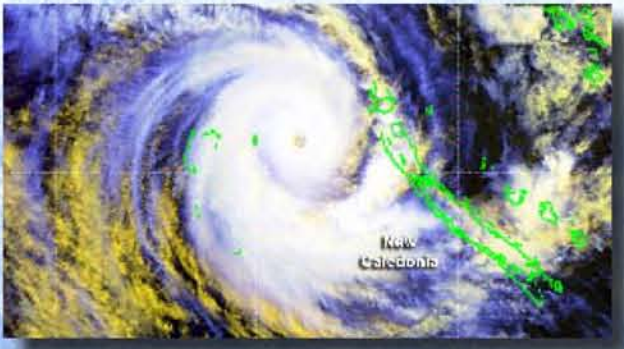
Ocean Basin: Southern Pacific Name: Aml Date: Jan 11-14 Max Winds (kts): 110 Lowest Pressure (mb): 950 Storm Position (nearest degree): 21S 177W



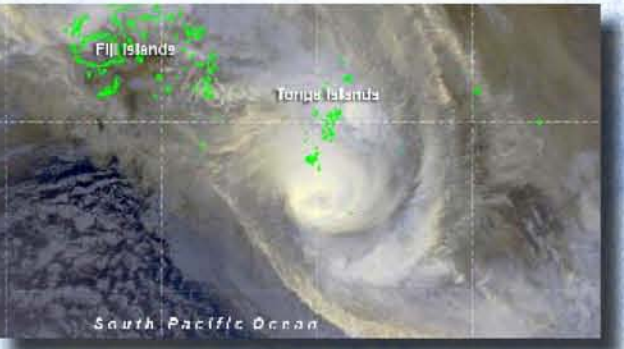
Ocean Basin: Southern Pacific Name: Beni Date: Jan 25-31 Max Winds (kts): 125 Lowest Pressure (mb): 920 Storm Position (nearest degree): 17S 143E



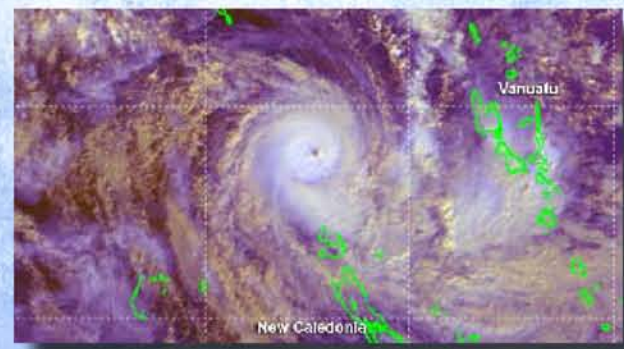
Ocean Basin: Southern Pacific Name: Davi Date: Feb 05-10 Max Winds (kts): 130 Lowest Pressure (mb): 920 Storm Position (nearest degree): 18S 147W



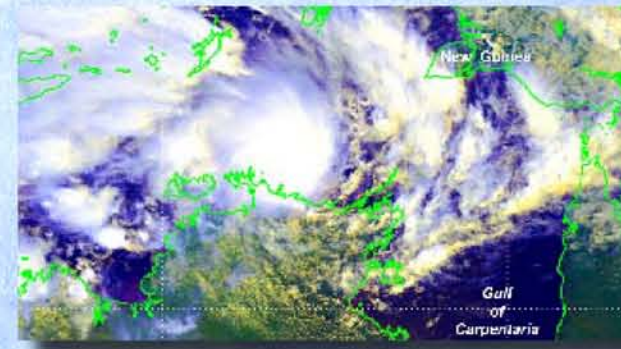
Ocean Basin: Southern Pacific Name: Erica Date: Mar 04-15 Max Winds (kts): 140 Lowest Pressure (mb): 915 Storm Position (nearest degree): 20S 142E



Ocean Basin: Southern Pacific Name: Eseta Date: Mar 10-14 Max Winds (kts): 110 Lowest Pressure (mb): 930 Storm Position (nearest degree): 23S 123W



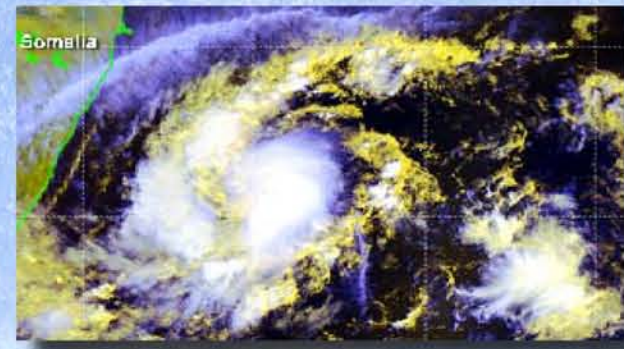
Ocean Basin: Southern Pacific Name: Gina Date: Jun 04-08 Max Winds (kts): 90 Lowest Pressure (mb): 950 Storm Position (nearest degree): 17S 142E



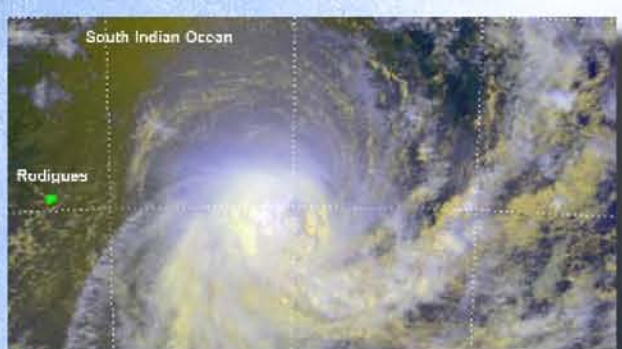
Ocean Basin: Southern Pacific Name: Debbie Date: Dec 18-21 Max Winds (kts): n/a Lowest Pressure (mb): n/a Storm Position (nearest degree): 11S 134E



Ocean Basin: Northern Indian Name: OIB Date: May 12-13 Max Winds (kts): 65 Lowest Pressure (mb): 976 Storm Position (nearest degree): 12N 86E



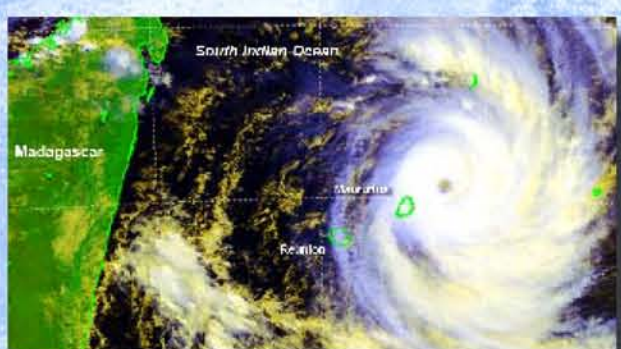
Ocean Basin: Northern Indian Name: O2A Date: Nov 12-14 Max Winds (kts): 65 Lowest Pressure (mb): 958 Storm Position (nearest degree): 04N 54E



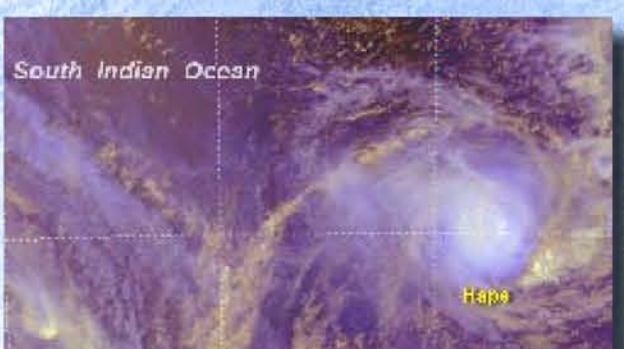
Ocean Basin: Southern Indian Name: Ebula Date: Jan 08-12 Max Winds (kts): 85 Lowest Pressure (mb): 975 Storm Position (nearest degree): 18S 71E



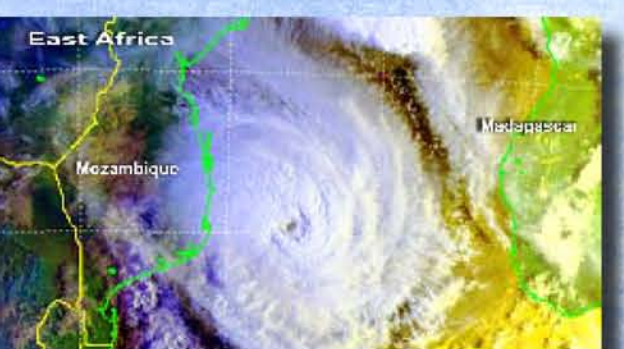
Ocean Basin: Southern Indian Name: Fiona Date: Feb 05-13 Max Winds (kts): 100 Lowest Pressure (mb): 930 Storm Position (nearest degree): 14S 97E



Ocean Basin: Southern Indian Name: Gerry Date: Feb 08-15 Max Winds (kts): 90 Lowest Pressure (mb): 940 Storm Position (nearest degree): 15S 99E



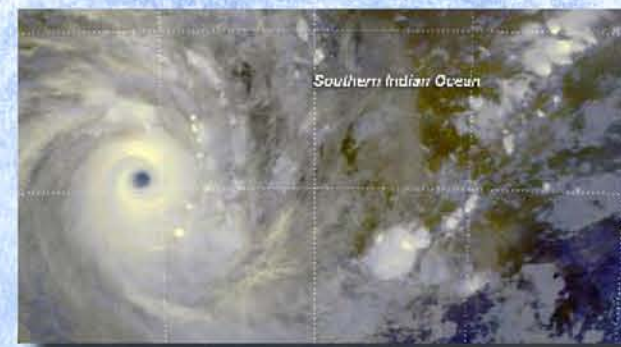
Ocean Basin: Southern Indian Name: Hape Date: Feb 10-15 Max Winds (kts): 80 Lowest Pressure (mb): 965 Storm Position (nearest degree): 15S 71E



Ocean Basin: Southern Indian Name: Japhet Date: Feb 24 - Mar 03 Max Winds (kts): 115 Lowest Pressure (mb): 927 Storm Position (nearest degree): 23S 37E

Ocean Basin Color Key

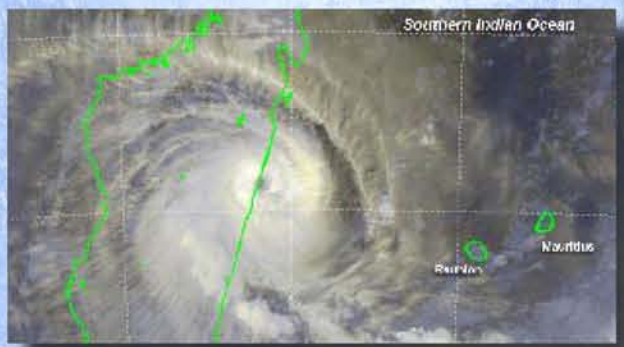
- Atlantic
- Eastern Pacific
- Western Pacific
- Southern Pacific
- Northern Indian
- Southern Indian



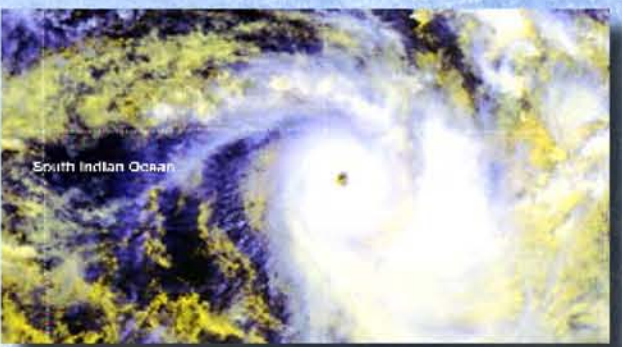
Ocean Basin: Southern Indian Name: Kalunde Date: Mar 05-15 Max Winds (kts): 140 Lowest Pressure (mb): 905 Storm Position (nearest degree): 14S 70E



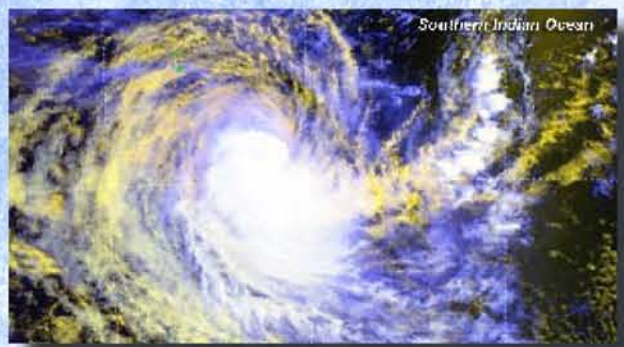
Ocean Basin: Southern Indian Name: Inigo Date: Apr 01-08 Max Winds (kts): 140 Lowest Pressure (mb): 900 Storm Position (nearest degree): 13S 115E



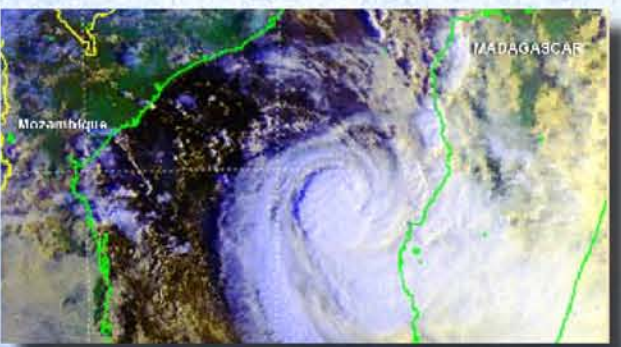
Ocean Basin: Southern Indian Name: Manou Date: May 03-10 Max Winds (kts): 92 Lowest Pressure (mb): 952 Storm Position (nearest degree): 19S 49E



Ocean Basin: Southern Indian Name: Beni Date: Nov 09-20 Max Winds (kts): n/a Lowest Pressure (mb): n/a Storm Position (nearest degree): 11S 75E



Ocean Basin: Southern Indian Name: Jana Date: Dec 07-12 Max Winds (kts): 80 Lowest Pressure (mb): n/a Storm Position (nearest degree): 14S 99E



Ocean Basin: Southern Indian Name: Cela Date: Dec 05-21 Max Winds (kts): 65 Lowest Pressure (mb): n/a Storm Position (nearest degree): 21S 42E



The majority of satellite images depicted on this poster were taken by NOAA's Polar-orbiting Operational Environmental Satellite (POES), which orbits the earth about 14 times daily, from pole to pole, crossing the equator at about the same local time each day. The false-color images were created using three of five or six channels available on the Advanced Very High Resolution Radiometer (AVHRR).

Fifty-one tropical cyclones with sustained surface winds of 64 knots (74 mph) or greater were observed around the world during calendar year 2003. These storms are referred to as hurricanes in the central and eastern North Pacific regions and Atlantic region (including Gulf of Mexico and Caribbean Sea), and typhoons in the western North Pacific Region. In the Indian Ocean region and South Pacific region, these storms are simply referred to as cyclones. The approximate location of each cyclone in the information label indicates position of maximum intensity. However, the images depicted do not always coincide with peak strength of the storm.

The strength of a tropical cyclone reaching hurricane intensity is placed into one of five categories of the Saffir-Simpson Hurricane Scale (see table to the right).

Category	Knots	(MPH)
1	64-82	(74-95)
2	83-95	(96-110)
3	96-113	(111-130)
4	114-135	(131-155)
5	136 and >	(156 and >)

Prepared by NOAA's National Climatic Data Center, Asheville, North Carolina. Contact: NCDC Satellite Services Group. Phone: 828-271-4850 x 3183. E-mail: NCDC.satorder@noaa.gov or order online at www.ncdc.noaa.gov