

**1 COMPACT AUTHORITY/ACTIVATION**

2  
3 The mobilization plan is authorized under Article VI of the Southeastern States Forest Fire Compact Commission  
4 Bylaws and Article VI of the South Central States Fire Compact Commission Bylaws.

5  
6 Officers of the Southeastern States Forest Fire Compact Commission are filled annually on a rotation basis. Current  
7 officers are as follows:

8

Chair:	Linda Casey (Alabama)
Vice-Chair:	Jim Karels (Florida)
Secretary-Treasurer:	Robert Farris (Georgia)

9  
10 Officers of the South Central States Forest Fire Protection Compact are filled on an annual rotation basis. Current  
11 officers are as follows:

12

Chair:	Charlie Morgan (Mississippi)
Vice Chair:	George Geissler (Oklahoma)
Secretary-Treasurer:	Tom Boggus (Texas)

13  
14 The Compact Coordinator for both Compacts is ordinarily the Forest Service Fire and Aviation Emergency  
15 Operations officer, and the Deputy Compact Coordinator is the Southern Area Coordinator. Current incumbents are:

16

Compact Coordinator:	Steve Weaver, (F&AM Emergency Operations)
Deputy Coordinator:	Vacant (F&AM, SACC)

17  
18 Either Compact is activated when the Compact Coordinator or Deputy is notified by a member state, or when a  
19 member state places a compact resource order requesting resources (see "Mobilization" below). When one Compact  
20 is activated, the Compact Coordinator or Deputy will notify the Chair of the Southeast and the South Central  
21 Compacts. Dispatching assistance is usually provided by the Southern Area Coordination Center.

22  
23 **OBJECTIVES AND CONTENT**

- 24 ➤ Provide an orderly, timely, cost efficient method of providing aid to requesting Compact states.  
25 ➤ Ensure that aid can be obtained rapidly.  
26 ➤ Provide a system to collect and distribute timely fire information between Compact states.  
27 ➤ Provide a means of dispatching resources both within and outside the Compact.  
28 ➤ Provide a method of Compact Incident Reviews.  
29 ➤ Establish a listing of compact resources.

30  
31 **MUTUAL AID PROCEDURES**

32  
33 **PREMOBILIZATION**

- 34 ➤ Each Compact state will furnish the Coordinator with a listing of resources available as outlined in the appendix by  
35 January 1 each year. (APPENDIX H)  
36 ➤ Daily fire activity will be reported by the States (via their State Coordination Center) to the compact coordinator  
37 supplying the following information. (APPENDIX A):  
38 • Number of fires  
39 • Acres burned  
40 • Pertinent fire danger information (weather, etc.)  
41 • Synopsis of previous day activity (property damage, etc.).  
42

**1 MOBILIZATION**

**3 Compact Activation**

4 Coordinator will advise Compact Chairpersons that a Compact has been activated and keep the Compact Chairpersons  
5 advised.

**7 Aid Request**

8 Unlike co-op resource orders, which are processed by the State Interagency Coordination Centers, compact resource  
9 orders are placed by the requesting State directly with SACC. Requesting State will contact the Compact  
10 Coordinator outlining its needs as to personnel, equipment, or other support. A resource order form will be  
11 completed by the requesting State and e-mailed to SACC.

**13 Compact State Aid Available**

14 The Coordinator will contact the compact states best able to meet the request.

**16 No Compact Aid Available**

17 The Coordinator will continue to contact other States, U.S. Forest Service, cooperators, other fire protection  
18 compacts, and other sources until the requested resources are located. Requesting state will be contacted for  
19 decision before a firm order is made.

**21 Dispatch Procedure**

22 The Coordinator will work with both the receiving and sending agency to coordinate times, places, equipment  
23 transportation, and lengths of service.

**25 Liaison Officer**

26 A Liaison Officer from the aiding State shall be provided when multiple resources are requested, i.e., two tractor units -  
27 one liaison officer; six tractor units- two liaison officers.

**29 Interstate Equipment Travel Restrictions**

30 The Coordinator will work with individual states to provide appropriate clearances.

**32 Information**

33 Information regarding Compact resources within a receiving state will be passed through the Coordinator to the  
34 sending State. Information regarding the news media will be handled by each state. The Compact Coordinator shall  
35 be prepared to provide information on general Compact activities.

**37 Food and Seeping Facilities**

38 These will be provided by the receiving state; unless other arrangements are made in advance. The sending state will be  
39 reimbursed for per diem while resources are traveling to and from the incident.

**41 Supervision**

42 On-the-fire supervision work will usually be provided by the receiving state. However, if the state does not have sufficient  
43 qualified overhead then appropriate overhead should be requested through the Compact.

**45 Pay Rates**

46 Personnel and equipment reimbursements will be at the current rates currently published by respective states. The rates  
47 provided in Appendix H should be regarded as examples only and subject to change.

48  
49 The sending state will supply sufficient communications equipment for its crews to interface with the receiving state.  
50 Additional communication support should be ordered through Coordinator.

1 **DEMOBILIZATION**

2  
3 **Release priority**

4 Out of State personnel and equipment shall be released as soon as fire conditions warrant. The Coordinator shall be  
5 notified when release is imminent and when accomplished. It shall be the Coordinator's responsibility to notify the  
6 states when their crews are released, and relay their E.T.A. at headquarters.

7  
8 **Equipment Return**

9 The receiving state is responsible for repair or reimbursement for damaged or lost tools and equipment. Records of  
10 hours and/or miles used must be returned with equipment so that servicing or overhaul can be arranged. The sending  
11 state should send mechanically sound equipment. The receiving state should make notations of any equipment  
12 deficiency upon arrival.

13  
14 **Reimbursement Vouchers**

15 The sending state will send the receiving state reimbursement vouchers within 30 days after return of personnel  
16 and/or equipment.

17  
18 **Narrative Report**

19 Both the sending and receiving states will send a written critique on all phases of their part of the mutual aid  
20 operation to the Compact Coordinator. This report will serve as supporting material for incident reviews.

21  
22 **FIRE EMERGENCIES**

23  
24 **Outside compact area**

25 Each state will maintain internal Cooperative Agreements dealing with agency fire assistance.

26  
27 **Between compacts**

28 The Southeastern States Compact Coordinator will coordinate with his or her counterpart in other compacts if  
29 assistance is being requested or if resources are being sent to a Southern Area Compact. Normal dispatch  
30 procedures will be followed in handling resources.

31  
32 **COMPACT INCIDENT REVIEW**

33  
34 **Purpose**

35 When significant mutual aid is requested and used, an Incident Review shall be made to determine efficiency and  
36 effectiveness of the Compact action.

37  
38 **Time and place**

39 The Compact Coordinator shall arrange for the Incident Review to meet at a convenient time and at a suitable  
40 location in the aided State.

41  
42 **REVIEW TEAM MAKE-UP**

- 43 ➤ State Forester and Fire Chief of receiving state.  
44 ➤ Fire Chief of sending state or states.  
45 ➤ Representative of U.S. Forest Service, Fire and Aviation in the receiving State.  
46 ➤ Fire Chief and Staff from other Compact states, as desired.  
47 ➤ Compact Coordinator.

48  
49 **SUPPORTING INFORMATION**

50 Suppression personnel involved in the incident may be asked to participate in the Review. Any supporting material  
51 such as maps, time records, weather records, and critiques should be available for the Review.

1 **INCIDENT REPORT**

2 The Compact Coordinator shall prepare a written report of all findings including recommendations for future  
3 operations. This report will be sent to all member states and U.S. Forest Service, Fire and Aviation.  
4

5 **STANDARD DISPATCHES**

6 Under the terms of a compact mobilization, the following will be considered “standard dispatches”:  
7

8 Tractor Strike Team:

- 9 ➤ 5 Tractor/Plows w/2 operators each and communications
- 10 ➤ 1 Strike Team Leader w/vehicle and communications

11 Engine Strike Teams:

- 12 ➤ 5 engines, any type, w/2 operators each and communications
- 13 ➤ 1 Strike Team Leader w/vehicle and communications

14  
15 Personnel assigned on compact orders will receive a minimum of eight (8) hours of work time per day, with the  
16 receiving state reimbursing for the base 8 plus any overtime. These procedures apply to any vehicle or equipment  
17 responding to a compact or federal assignment across state lines. This includes, but is not limited to, wildland fire  
18 engines, dozers, tractor-plows, ATVs, transports and hand tools.  
19

20 The procedures are:

- 21 ➤ Clean emergency response rolling stock before departure from, or return to, home unit.
- 22 ➤ High pressure spray exteriors, undercarriage, tires, rims, tracks, etc. to remove dirt and debris.
- 23 ➤ Air blow or water spray radiators and pickup beds.
- 24 ➤ Cleaning should be done at a non-sensitive location so that if a local pest is deposited there it will not pose a  
25 new problem.
- 26 ➤ Units should be inspected upon arrival at assignment and before departure.
- 27 ➤ High pressure spray all fire line hand tools.

28  
29 **SHARED RESOURCES**

30 **Examples of resources available through the compacts**

31 **Aviation**

- 32 ➤ Helicopter Buckets
- 33 ➤ Airtankers
- 34 ➤ Helicopters
- 35 ➤ Air Transport
- 36 ➤ Retardant Mixing Facilities - portable Long and Short Term
- 37 ➤ Aerial Ignition Systems

38  
39 **Personnel**

- 40 ➤ Hand Crews (20 person)
- 41 ➤ Fire Behavior Analyst
- 42 ➤ Air Attack Group Supervisors
- 43 ➤ Dispatchers
- 44 ➤ Communications Unit Leaders
- 45 ➤ Air Operations Branch Director
- 46 ➤ Air Support Group Supervisor

47  
48 **Specialized Water Handling Equipment**

- 49 ➤ Portable Pumps
- 50 ➤ Irrigation Pumps/Systems
- 51 ➤ Large Volume Pumps

52  
53  
54

- 1 **Tractor-Plow Units**  
2 ➤ High Flotation by size class  
3
- 4 **All Terrain Vehicles**  
5 ➤ Water Handling  
6 ➤ Non-water Handling  
7
- 8 **Kitchens**  
9
- 10 **Mobile Command Posts**  
11
- 12 **Maffs**  
13
- 14 **Portable Bridges**  
15
- 16 **INITIAL BRIEFING FOR STATE CREWS**  
17 The sending state will:  
18 ➤ Ensure that all crews are qualified to fill job for which dispatched.  
19 ➤ Ensure that crews come equipped with hard hats, gloves, fire shirts and pants, goggles, gloves, fire shelters and  
20 any other safety equipment needed for the job.  
21
- 22 The Compact Coordinator will:  
23 ➤ Ensure that receiving state brief out-of-State crews upon entering the state and that Compact policy is followed.  
24
- 25 The receiving state will conduct a briefing covering:  
26 ➤ Fire situation and expected behavior.  
27 ➤ Assignment area  
28 ➤ Terrain  
29 ➤ Fuels  
30 ➤ Supervision  
31 ➤ Location of housing, feeding  
32 ➤ Logistical support - fuel, grease, repair, etc.  
33 ➤ Fire headquarters  
34 ➤ Social customs  
35 ➤ Local maps  
36 ➤ Resource values at risk  
37 ➤ Safety items  
38 ➤ State laws, traffic, regulations, and restrictions  
39 ➤ State policy  
40 ➤ Other pertinent information  
41
- 42 **COMPACT ACTIVATION CHECKLIST**  
43 ➤ Determine need for resources.  
44 ➤ Place resource order with Compact Coordinator (USFS) Atlanta, Georgia, for another State's resources.  
45 ➤ Verbal and written notification of compact activation to the coordinator is preferred for record keeping.  
46 ➤ Compact Coordinator will notify the appropriate Compact Chair.  
47 ➤ Compact Coordinator will notify the adjoining Compact Chair.  
48 ➤ Compact Coordinator will place resource orders with states stating "This is a Compact Order" (Normally  
49 following the closest resource concept).  
50 ➤ Compact Coordinator will pass information on resources assigned to ordering State.  
51 ➤ Demob will follow the normal demob process; release information, ETD's and ETA's on the same resource  
52 order form used in the mobilization.  
53 ➤ The Compact Coordinator will update the Compact Chair, as needed, of the situation and actions taken.



**APPENDIX B**

**INITIAL BRIEFING FOR STATE CREWS**

The sending state will ensure:

- That all crews are qualified to fill job for which dispatched.
- That crews come equipped with hard hats, gloves, fire shirts and pants, goggles, fire shelters and any other safety equipment needed for the job.

The Compact Coordinator will:

- Ensure that receiving State brief out of State crews upon entering the State and that Compact policy is followed.

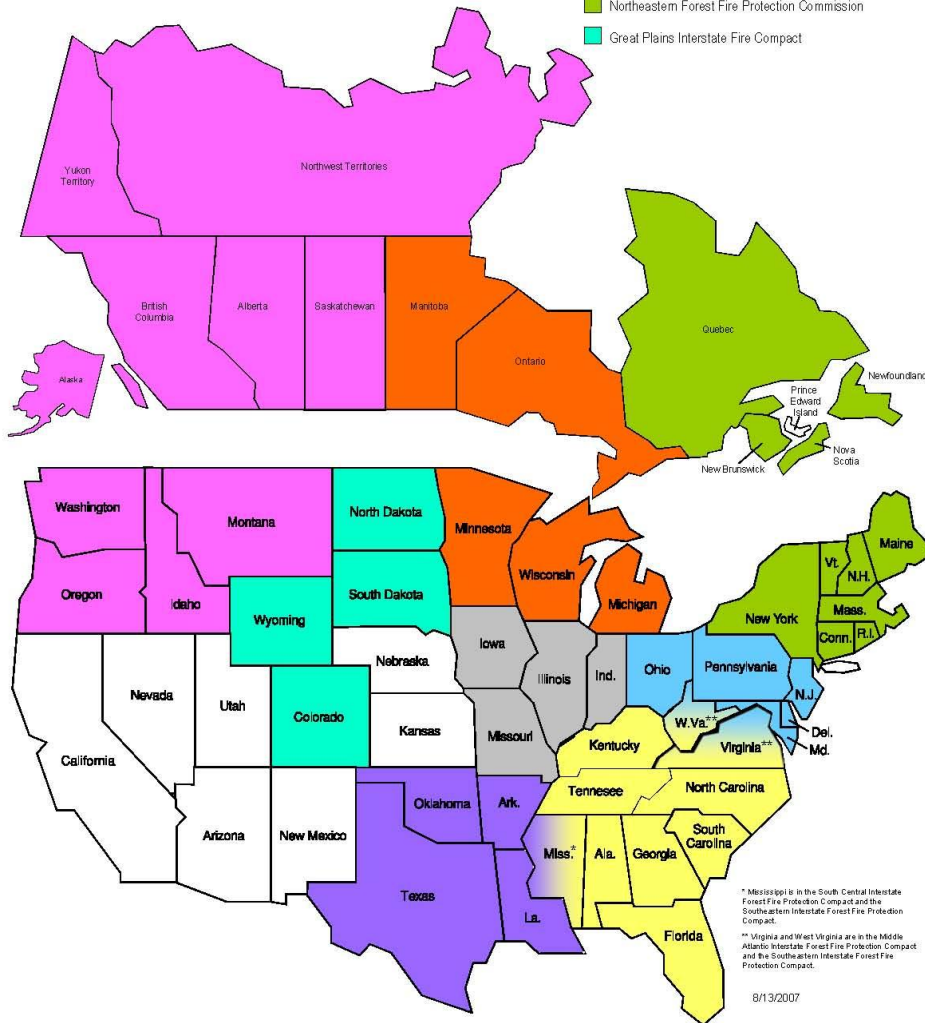
The receiving State will hold a briefing on:

- Fire situation and expected behavior.
- Assignment area
- Terrain
- Fuels
- Supervision
- Location of housing, feeding
- Logistical support – fuel, grease, repair, etc.
- Fire headquarters
- Social customs
- Local maps
- Resource values at risk
- Safety items
- State laws, traffic, regulations, and restrictions
- State policy
- Other pertinent information

**1 COMPACT MAP**

**Forest Fire Compacts in the United States**

- Northwest Compact
- The Big Rivers Forest fire Management Compact
- Great Lakes Forest Fire Compact
- Southeastern Interstate Forest Fire Protection Compact
- Middle Atlantic Interstate Forest Fire Protection Compact
- South Central Interstate Forest Fire Protection Compact
- Northeastern Forest Fire Protection Commission
- Great Plains Interstate Fire Compact



2

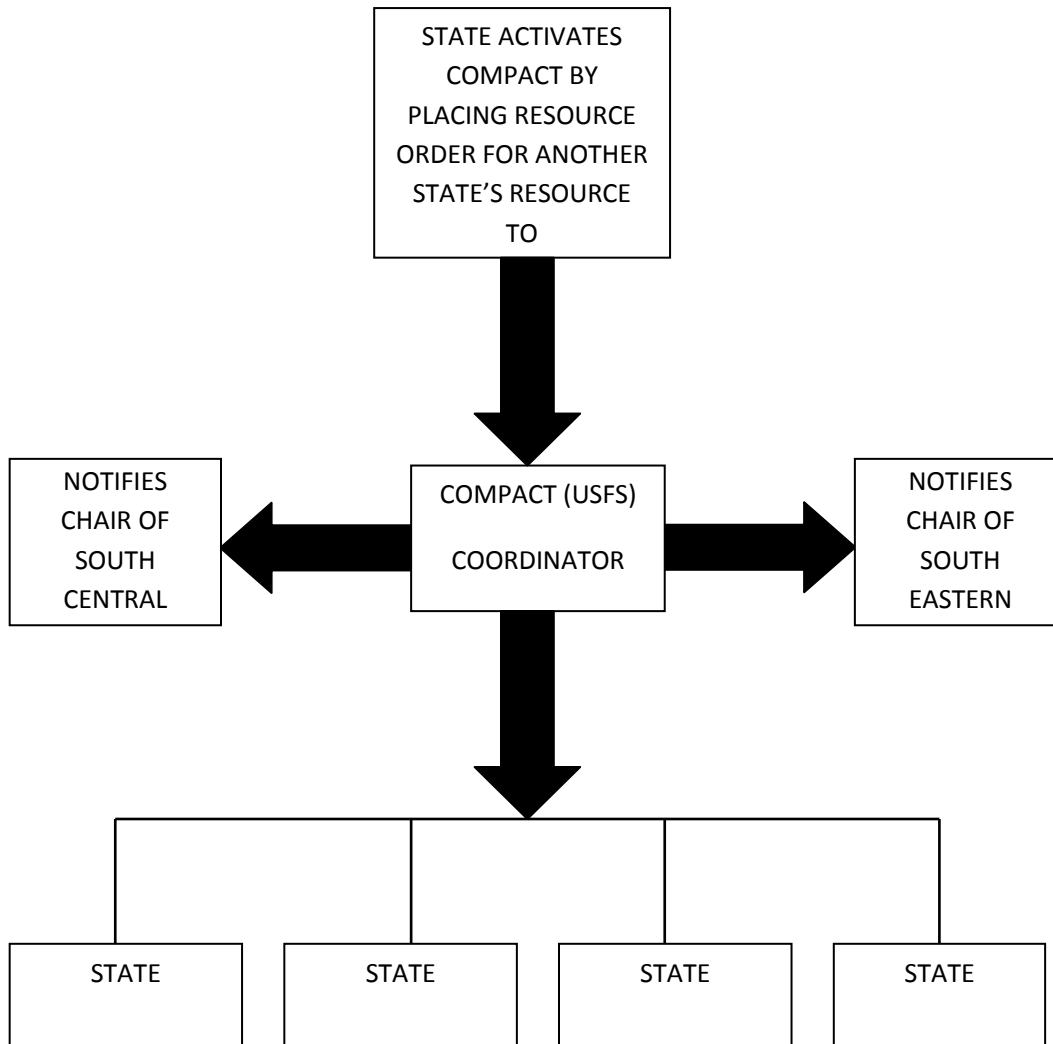


**APPENDIX D**

**COMPACT ACTIVATION CHECKLIST**

- Determine need for resources.
- Verbal and written notification of compact activation (to the compact by the requesting State) is preferred for record keeping. (678-320-3000; GEOGRAPHIC AREA COORDINATION)
- Place resource orders with Compact Coordinator (USFS) Atlanta, Georgia, for another State's resources. (678-320-3020; COMPACT DESK)
- Compact Coordinator will notify the appropriate Compact Chair.
- Compact Coordinator will notify the adjoining Compact Chair.
- Compact Coordinator will place resource orders with States stating "This is a Compact Order" (Normally following the closest resource concept).
- Compact Coordinator will pass information on resources assigned to ordering State.
- Demob will follow the normal demob process; release information, ETD's and ETA's on the same resource order form used in the mobilization.
- The Compact Coordinator will update the Compact Chair, as needed, of the situation and actions taken.
- Once the fire emergency has subsided and all compact resources have returned to their home State, the requesting State shall notify the compact coordinator that the compact has been de-activated. Both verbal and written notification is preferred.

**APPENDIX E**



The Compact Coordinator, when placing the resource order, will state “this is a compact order”.

Upon activation of a compact, a courtesy call will be given to the adjoining compact chair.

The Compact Coordinator will keep the compact chair advised to the situation and actions taken.

1  
2  
3  
4

**APPENDIX F**

**2012**

**SOUTHERN FIRE CHIEFS DIRECTORY**

**ALABAMA FORESTRY COMMISSION**

**DAN JACKSON**

513 MADISON AVE  
MONTGOMERY AL 36130  
PHONE 334/240-9335  
FAX 334/240-9346  
CELL PHONE 334-549-1016  
E-MAIL [Dan.Jackson@forestry.alabama.gov](mailto:Dan.Jackson@forestry.alabama.gov)

**ARKANSAS FORESTRY COMMISSION**

**DON MCBRIDE**

3821 WEST ROOSEVELT ROAD  
LITTLE ROCK AR 72204  
PHONE 501/296-1870  
FAX 501/296-1949  
CELL PHONE 501/454-0121  
E-MAIL [don.mcbride@arkansas.gov](mailto:don.mcbride@arkansas.gov)

**FLORIDA FOREST SERVICE**

**JOHN FISH**

3125 CONNER BLVD  
TALLAHASSEE FL 32399-1650  
PHONE 850/487-2060  
CELL 850/228-7754  
E-MAIL [John.Fish@freshfromflorida.com](mailto:John.Fish@freshfromflorida.com)

**GEORGIA FORESTRY COMMISSION**

**ALAN DOZIER**

P O BOX 819  
MACON GA 31202-0819  
PHONE 478/751-3490  
CELL 478/951-1279  
FAX 478/751-3465  
E-MAIL [adozier@gfc.state.ga.us](mailto:adozier@gfc.state.ga.us)

**KENTUCKY DIVISION OF FORESTRY**

**Vacant**

627 COMANCHE TRAIL  
FRANKFORT KY 40601  
PHONE 502/564-4496  
CELL 502/330-0223  
FAX 502/564-2092  
E-MAIL

**NORTH CAROLINA FOREST SERVICE**

**JIM PREVETTE**

1616 Mail Service Center  
RALEIGH NC 27699-1616  
PHONE 919/857/4848  
FAX 919/857/4806  
E-MAIL [JIM.PREVETTE@NCAGR.GOV](mailto:JIM.PREVETTE@NCAGR.GOV)

**OKLAHOMA DEPT. OF AGRICULTURE**

**FORESTRY DIVISION**

**MARK GOELLER**

PO Box 528804  
OKLAHOMA CITY OK 73152-8804  
PHONE 405/522-6146  
FAX 405/422-4583  
E-MAIL [mark.goeller@oda.state.ok.us](mailto:mark.goeller@oda.state.ok.us)

**SOUTH CAROLINA FORESTRY COMMISSION**

**DARRYL JONES**

P O BOX 21707  
COLUMBIA SC 29221-1707  
PHONE 803/896-8817  
CELL 803/667-1039  
E-MAIL [djones@forestry.state.sc.us](mailto:djones@forestry.state.sc.us)

**TENNESSEE DIVISION OF FORESTRY**

**JOHN KIRKSEY**

P O BOX 40627, MELROSE STATION  
NASHVILLE TN 37204  
PHONE 615/837-5425  
FAX 615/837-5129  
E-MAIL [john.kirksey@state.tn.us](mailto:john.kirksey@state.tn.us)

**TEXAS FOREST SERVICE**

**MARK STANFORD**

John B. Connally Building  
301 Tarrow, Suite 304  
College Station, TX 77840-7896  
PHONE 979-458-6507  
CELL PHONE 979-220-1408  
E-MAIL [mstanford@tfs.tamu.edu](mailto:mstanford@tfs.tamu.edu)

**LOUISIANA DEPT. OF AGRICULTURE & FORESTRY  
DON SMITH**

P O BOX 1628  
BATON ROUGE LA 70821  
PHONE 225/925-4500  
CELL 318-613-0039  
FAX 225/922-1356  
E-MAIL [dpsmith@ldaf.state.la.us](mailto:dpsmith@ldaf.state.la.us)

**VIRGINIA DEPARTMENT OF FORESTRY  
JOHN MILLER**

900 Natural Resources Drive, Suite 800  
CHARLOTTESVILLE VA 22903  
PHONE 434/977-1375 EXT. 3323  
CELL 434/962-3484  
FAX 434/977-9839  
E-MAIL [john.miller@dof.virginia.gov](mailto:john.miller@dof.virginia.gov)

**MISSISSIPPI FORESTRY COMMISSION  
DENNIS DAUTERIVE**

3139 Hwy. 468 West  
Pearl, MS 39208  
OFFICE 601-420-6001  
FAX 601-420-6003  
CELL 662-417-7495  
E-MAIL [ddauterive@mfc.state.us](mailto:ddauterive@mfc.state.us)

- 1
- 2
- 3
- 4
- 5
- 6
- 7
- 8
- 9
- 10
- 11
- 12
- 13
- 14
- 15
- 16
- 17
- 18
- 19
- 20
- 21
- 22
- 23
- 24
- 25
- 26
- 27
- 28
- 29
- 30
- 31
- 32
- 33
- 34
- 35
- 36

**APPENDIX G  
SHARED RESOURCES**

To be sent to Compact Coordinator annually by January 1 (see page 100-1)

**EQUIPMENT**

**NOTE: Receiving States are responsible for repairing damaged equipment and, sending States are responsible for routine maintenance**

Type:	
Make:	
Special Equipment: (LGP, Plow Type, Blade Type, With Foam, etc.)	
Special Moving Requirements: (Oversized Load, etc)	
Rates:	
Per Hour of Use w/Receiving State Supplying Fuel:	
Per Hour of Use w/Sending State Supplying Fuel:	
Per Mile w/Receiving State Supplying Fuel:	
Per Mile w/Sending State Supplying Fuel:	
Minimum Daily Charge Equipment:	
Transport Cost per Mile w/Receiving State supplying fuel:	
Transport Cost per Mile w/Sending State Supplying Fuel:	
Minimum Daily Charge for Transport:	
NOTE: List Operator Cost in Personnel Section.	

**AIRCRAFT**

Type:	
Make:	
Model:	
Special Equipment:	
Passenger Capacity (exclude pilot):	
Load Capacity or Retardant Gallons:	
Rate::	
Per Hour of Use w/Receiving State Supplying Fuel:	
Per Hour of Use w/Sending State Supplying Fuel:	
Minimum Daily Charge:	
NOTE: List Operator Cost in Personnel Section:	

**PERSONNEL**

**NOTE: All Compact Personnel are guaranteed a Minimum of Eight Hours per Day**

Qualifications:	
Standard Rate of Pay:	
Overtime Rate:	
Per Diem Rate, if Food and Lodging are not Provided:	

**Alabama Forestry Commission  
EQUIPMENT**

**Rates Updated 2012**

**NOTE: Receiving States are responsible for repairing damaged equipment and, sending States are responsible for routine maintenance**

Type:	Tractor Plow Unit/Dozier
Make:	John Deere 750 LGP (environmental cab)
Special Equipment: (LGP, Plow Type, Blade Type, With Foam, etc.)	Straight blade with six-way movement and rear mounted winch
Special Moving Requirements: (Oversized Load, etc)	Semi Truck/Tractor and Trailer "Oversized Load" (Permit Required)
Rates:	
Per Hour of Use w/Receiving State Supplying Fuel:	\$110/hour minus fuel used
Per Hour of Use w/Sending State Supplying Fuel:	\$110/hour
Minimum Daily Charge Equipment:	Minimum 4 hours per day (\$440/day)
Transport Cost per Mile w/Sending State Supplying Fuel:	\$2.75/mile
Minimum Daily Charge for Transport:	50 miles/day (\$137.50/day)
NOTE: List Operator Cost in Personnel Section.	

**ALABAMA FORESTRY COMMISSION  
EQUIPMENT**

**Rates Updated 2012**

**NOTE: Receiving States are responsible for repairing damaged equipment and, sending States are responsible for routine maintenance**

Type:	Type 4 Tractor Plow Unit
Make:	John Deere 650
Special Equipment:	Rear FESCO plow, 6 point front blade
Special Moving Requirements:	Low Boy trailer
Rates:	
Per Hour of Use w/Receiving State Supplying Fuel:	\$100/hour, minus fuel used
Per Hour of Use w/Sending State Supplying Fuel:	\$100/hour
Minimum Daily Charge Equipment:	Minimum 4 hours per day (\$400/day)
Transport Cost per Mile w/Sending State Supplying Fuel:	\$2.25/mile

Minimum Daily Charge for Transport: NOTE: Operator Cost in Personnel Section.	50 miles/day (\$112.50/day)
----------------------------------------------------------------------------------	-----------------------------

1  
2  
3  
4  
5

**ALABAMA FORESTRY COMMISSION  
EQUIPMENT  
Rates Updated 2012**

Type:	Type 4 Tractor Plow Unit
Make:	John Deere 550
Special Equipment:	Rear FESCO plow, 6 point front blade
Special Moving Requirements: (Oversized Load, etc)	Type 2 Transport
Rates:	
Per Hour of Use w/Receiving State Supplying Fuel:	\$80/hour, minus fuel used
Per Hour of Use w/Sending State Supplying Fuel:	\$80/hour
Minimum Daily Charge Equipment:	Minimum 5 hours per day (\$400/day)
Transport Cost per Mile w/Sending State Supplying Fuel:	\$2.25/mile
Minimum Daily Charge for Transport: NOTE: Operator Cost in Personnel Section.	50 miles/day (\$112.50/day)

6  
7  
8  
9  
10

**ALABAMA FORESTRY COMMISSION  
EQUIPMENT  
Rates Updated 2012**

Type:	Type 5 Tractor Plow Unit
Make:	John Deere 450
Special Equipment:	Rear FESCO plow, 6 point front blade
Special Moving Requirements: (Oversized Load, etc)	Type 2 Transport
Rates:	
Per Hour of Use w/Receiving State Supplying Fuel:	\$80/hour, minus fuel used
Per Hour of Use w/Sending State Supplying Fuel:	\$80/ hour
Minimum Daily Charge Equipment:	Minimum 5 hours per day (\$400/day)
Transport Cost per Mile w/Sending State Supplying Fuel:	\$2.25/mile
Minimum Daily Charge for Transport: NOTE: Operator Cost in Personnel Section.	50 miles/day (\$112.50/day)

11  
12

1  
2  
3  
4

**ALABAMA FORESTRY COMMISSION  
EQUIPMENT  
Rates Updated 2012**

Type:	Transports
Make:	Type 2 and Low-Boys
Special Equipment:	
Special Moving Requirements:	
Rates:	
Per Mile w/Receiving State Supplying Fuel:	\$2.25/mile, minus fuel used
Per Mile w/Sending State Supplying Fuel:	\$2.25/mile
Minimum Daily Charge Equipment:	50 miles/day (\$112.50/day)
NOTE: Operator Cost in Personnel Section.	

5  
6  
7  
8  
9

**ALABAMA FORESTRY COMMISSION  
EQUIPMENT  
Rates Updated 2012**

Type:	Pick-ups
Make:	¾ ton and ½ ton
Special Equipment:	Tank and pump (100 gal)
Special Moving Requirements:	
Rates:	
Per Mile w/Receiving State Supplying Fuel:	\$0.80/mile, minus fuel used
Per Mile w/Sending State Supplying Fuel:	\$0.80/mile
Minimum Daily Charge Equipment:	50 miles/day (\$40.00/day)
NOTE: Operator Cost in Personnel Section.	

10  
11  
12  
13  
14

**ALABAMA FORESTRY COMMISSION  
EQUIPMENT  
Rates Updated 2012**

Type:	Sedans and SUVs
Make:	
Special Equipment:	
Special Moving Requirements:	
Rates:	
Per Mile w/Receiving State Supplying Fuel:	\$0.80/mile, minus fuel used
Per Mile w/Sending State Supplying Fuel:	\$0.80/mile
Minimum Daily Charge Equipment:	50 miles/day (\$40.00/day)
NOTE: Operator Cost in Personnel Section.	

15  
16



1  
2  
3  
4

**ALABAMA FORESTRY COMMISSION  
EQUIPMENT  
Rates Updated 2012**

Type:	Logistics Support Trailer
Make:	Various
Special Equipment: (LGP, Plow Type, Blade Type, With Foam, etc.)	22 ft. – 30 ft. Travel Trailer
Special Moving Requirements: (Oversized Load, etc)	None
Rates:	
Per Hour of Use w/Receiving State Supplying Fuel:	N/A
Per Hour of Use w/Sending State Supplying Fuel:	N/A
Per Mile w/Receiving State Supplying Fuel:	N/A
Per Mile w/Sending State Supplying Fuel:	N/A
Minimum Daily Charge Equipment:	\$250 per Day
Transport Cost per Mile w/Receiving State supplying fuel:	See Pickups
Transport Cost per Mile w/Sending State Supplying Fuel:	See Pickups
Minimum Daily Charge for Transport: NOTE: List Operator Cost in Personnel Section.	N/A

5  
6  
7  
8  
9

**ALABAMA FORESTRY COMMISSION  
EQUIPMENT  
Rates Updated 2012**

Type:	All Terrain Vehicles
Make:	Various
Special Equipment: (LGP, Plow Type, Blade Type, With Foam, etc.)	4WD
Special Moving Requirements: (Oversized Load, etc)	Trailer Provided

10  
11

**ALABAMA FORESTRY COMMISSION  
PERSONNEL**

**Rates Updated 2012**

**NOTE: All Compact Personnel are guaranteed a minimum of eight hours per day**

Qualifications:	Twenty-person crew. Firefighter Type 2 and Type 1 with Crew Bosses to NWCG standards and Arduous Level Pack Test.
Standard Rate of Pay:	Base pay (40 hours per week) plus benefits
Overtime Rate:	Time and a half, plus benefits
Per Diem Rate, if Food and Lodging are not Provided:	\$75/day, or actual lodging plus up to \$50/day for meals

**ALABAMA FORESTRY COMMISSION  
PERSONNEL**

**Rates Updated 2012**

Qualifications:	Equipment Operator and swamper, both Firefighter Type 2 to NWCG standards
Standard Rate of Pay:	Base pay (40 hours per week) plus benefits
Overtime Rate:	Time and a half, plus benefits
Per Diem Rate, if Food and Lodging are not Provided:	\$75/day, or actual lodging plus up to \$50/day for meals

**ALABAMA FORESTRY COMMISSION  
PERSONNEL**

**Rates Updated 2012**

Qualifications:	Single Resource Overhead positions, certified to NWCG standards.
Standard Rate of Pay:	Base pay (40 hours per week) plus benefits
Overtime Rate:	Time and a half, plus benefits
Per Diem Rate, if Food and Lodging are not Provided:	\$75/day, or actual lodging plus up to \$50/day for meals

**ALABAMA FORESTRY COMMISSION  
PERSONNEL**

**Rates Updated 2012**

**NOTE: All Compact Personnel are guaranteed a minimum of eight hours per day**

Qualifications:	Type 2 and Type 3 Incident Management Teams (Wildfire and All Hazard)
Standard Rate of Pay:	Base pay (40 hours per week) plus benefits
Overtime Rate:	Time and a half, plus benefits
Per Diem Rate, if Food and Lodging are not Provided:	\$75/day or actual lodging plus up to \$50/day for meals.

**ARKANSAS FORESTRY COMMISSION  
EQUIPMENT  
Rates Updated 2012**

**NOTE: Receiving States are responsible for repairing damaged equipment and, sending States are responsible for routine maintenance**

Type:	Tractor w/plow
Make:	JD450//CAT/D-4
Special Equipment: (LGP, Plow Type, Blade Type, With Foam, etc.)	LGP or LT
Special Moving Requirements: (Oversized Load, etc)	Transports, Tandem axel
Rates: Per Hour of Use w/Receiving State Supplying Fuel:	\$60/Hr Minimum 4 hrs/day
Transport Cost per Mile w/Receiving State supplying fuel: NOTE: List Operator Cost in Personnel Section.	\$1.50/Mile Minimum \$75.00/day

**ARKANSAS FORESTRY COMMISSION  
EQUIPMENT**

**NOTE: Receiving States are responsible for repairing damaged equipment and, sending States are responsible for routine maintenance**

**Rates Updated 2012**

Type:	Tractor w/plow or winch
Make:	JD 550/650/Cat D5
Special Equipment: (LGP, Plow Type, Blade Type, With Foam, etc.)	Some with articulating V-blade and/or LGP and/or LT
Special Moving Requirements: (Oversized Load, etc)	Transport tandem axle
Rates: Per Hour of Use w/Receiving State Supplying Fuel:	\$80/Hr Minimum 4 hrs/day
Per Hour of Use w/Sending State Supplying Fuel:	
Per Mile w/Receiving State Supplying Fuel:	
Per Mile w/Sending State Supplying Fuel:	
Minimum Daily Charge Equipment:	Minimum 4 hrs/day (\$320)
Transport Cost per Mile w/Receiving State supplying fuel:	\$1.50/mile tandem axle transport or \$2.50/mile truck tractor with lowboy
Transport Cost per Mile w/Sending State Supplying Fuel:	
Minimum Daily Charge for Transport: NOTE: List Operator Cost in Personnel Section.	Minimum \$75.00/day

**ARKANSAS FORESTRY COMMISSION  
EQUIPMENT  
Rates Updated 2012**

Type: Pick-up trucks, 1/2 -3/4 ton. SUV	Pickups, SUVs and Vans
Make: various	Various
Special Equipment: (LGP, Plow Type, Blade Type, With Foam, etc.)	
Special Moving Requirements: (Oversized Load, etc)	none
Rates: Per Mile w/Receiving State Supplying Fuel: NOTE: List Operator Cost in Personnel Section.	\$0.60/mile Minimum \$30.00

**ARKANSAS FORESTRY COMMISSION  
AIRCRAFT  
Rates Updated 2012**

Type:	Fixed wing
Make:	Aero Commander
Model:	AC-500-B
Special Equipment:	GPS/Programmable Technisonic
Passenger Capacity (exclude pilot):	5
Load Capacity or Retardant Gallons:	N/A
Rate:: Per Hour of Use w/Receiving State Supplying Fuel:  Per Hour of Use w/Sending State Supplying Fuel:	\$300/hr
Minimum Daily Charge: NOTE: List Operator Cost in Personnel Section:	2.00 Hrs/day (\$600)

**ARKANSAS FORESTRY COMMISSION  
AIRCRAFT  
Rates Updated 2012**

Type:	Fixed Wing
Make:	Cessna
Model:	182
Special Equipment:	GPS/Programmable Technisonic
Passenger Capacity (exclude pilot):	3
Load Capacity or Retardant Gallons:	N/A
Rate:: Per Hour of Use w/Receiving State Supplying Fuel:  Per Hour of Use w/Sending State Supplying Fuel:  Minimum Daily Charge:	\$100/hr
NOTE: List Operator Cost in Personnel Section:	2.00 Hrs/day (\$200)

**ARKANSAS FORESTRY COMMISSION  
PERSONNEL**

**NOTE: All Compact Personnel are guaranteed a minimum of eight hours per day  
Rates Updated 2012**

Qualifications:	Variable
Standard Rate of Pay:	Actual costs
Overtime Rate:	1.5 hrs over 40hrs
Per Diem Rate, if Food and Lodging are not Provided:	Actual expenses

**FLORIDA FOREST SERVICE  
EQUIPMENT**

**NOTE: Receiving States are responsible for repairing damaged equipment and, sending States are responsible for routine maintenance  
Rates Updated 2012**

Type:	Dozer/tractor plow units			
Make:	Various			
Special Equipment: (LGP, Plow Type, Blade Type, With Foam, etc.)	LGP, 2-disc, straight or v-blade			
Special Moving Requirements: (Oversized Load, etc)	Requires hauling unit for road transport. Type 1 requires oversize load permit.			
Rates:	N/A			
Per Hour of Use w/Receiving State Supplying Fuel:	N/A			
Per Hour of Use w/Sending State Supplying Fuel:	Type 1	Type 2	Type 3	Type 4
	\$124.00/hr	\$108.00/hr	\$96.00/hr	\$74.00/hr
Per Mile w/Receiving State Supplying Fuel:	N/A			
Per Mile w/Sending State Supplying Fuel:	N/A			
Minimum Daily Charge Equipment:	Equipment is charged for the operational period except when in travel status to and from the receiving state, and then it is based on the hours of actual travel time while being transported.			
Transport Cost per Mile w/Receiving State supplying fuel:	N/A			
Transport Cost per Mile w/Sending State Supplying Fuel:				
Minimum Daily Charge for Transport: NOTE: List Operator Cost in Personnel Section.	See transport rates.			

1  
2  
3  
4

**FLORIDA FOREST SERVICE  
EQUIPMENT  
Rates Updated 2012**

Type:	Transports
Make:	Various
Special Equipment: (LGP, Plow Type, Blade Type, With Foam, etc.)	N/A
Special Moving Requirements: (Oversized Load, etc)	N/A
Rates:	
Per Hour of Use w/Receiving State Supplying Fuel:	N/A
Per Hour of Use w/Sending State Supplying Fuel:	\$57.00/hr
Per Mile w/Receiving State Supplying Fuel:	N/A
Per Mile w/Sending State Supplying Fuel:	N/A
Minimum Daily Charge Equipment:	Equipment is charged for the operational period except when in travel status to and from the receiving state, and then is based on the hours of actual travel time.
Transport Cost per Mile w/Receiving State supplying fuel:	N/A
Transport Cost per Mile w/Sending State Supplying Fuel:	N/A
Minimum Daily Charge for Transport: NOTE: List Operator Cost in Personnel Section.	N/A

5  
6  
7  
8  
9

**FLORIDA FOREST SERVICE  
EQUIPMENT  
Rates Updated 2012**

Type:	Trailers (1 operator)		
Make:	Various		
Special Equipment: (LGP, Plow Type, Blade Type, With Foam, etc.)	N/A		
Special Moving Requirements: (Oversized Load, etc)	Requires hauling unit for road transport.		
Rates:			
Per Hour of Use w/Receiving State Supplying Fuel:	N/A		
Per Hour of Use w/Sending State Supplying Fuel:	Logistics	Refrigerated	Ground Support w/ office
	\$200.00/daily	\$303.00/daily	\$330.00/daily
Per Mile w/Receiving State Supplying Fuel:	N/A		
Per Mile w/Sending State Supplying Fuel:	N/A		

Minimum Daily Charge Equipment:	N/A
Transport Cost per Mile w/Receiving State supplying fuel:	N/A
Transport Cost per Mile w/Sending State Supplying Fuel:	N/A
Minimum Daily Charge for Transport: NOTE: List Operator Cost in Personnel Section.	The cost of the transport is included with the daily rate.

1  
2  
3  
4  
5

**FLORIDA FOREST SERVICE  
EQUIPMENT  
Rates Updated 2012**

Type:	Engines (2 operators)					
Make:	Various					
Special Equipment: (LGP, Plow Type, Blade Type, With Foam, etc.)	Foam proportioned/aux. motor/pump					
Special Moving Requirements: (Oversized Load, etc)	N/A					
Rates:						
Per Hour of Use w/Receiving State Supplying Fuel:	N/A					
Per Hour of Use w/Sending State Supplying Fuel:	<table border="1"> <tr> <td>Type 3</td> <td>Type 6</td> </tr> <tr> <td>\$55.00/hr</td> <td>\$48.00/hr</td> </tr> </table>	Type 3	Type 6	\$55.00/hr	\$48.00/hr	
Type 3	Type 6					
\$55.00/hr	\$48.00/hr					
Per Mile w/Receiving State Supplying Fuel:	N/A					
Per Mile w/Sending State Supplying Fuel:	N/A					
Minimum Daily Charge Equipment:	Equipment is charged for the operational period except when in travel status to and from the receiving state, then it is based on the hours of actual travel time.					
Transport Cost per Mile w/Receiving State supplying fuel:	N/A					
Transport Cost per Mile w/Sending State Supplying Fuel:	N/A					
Minimum Daily Charge for Transport: NOTE: List Operator Cost in Personnel Section.	N/A					

6  
7

1  
2  
3  
4

**FLORIDA FOREST SERVICE  
EQUIPMENT  
Rates Updated 2012**

Type:	Passenger Vehicles
Make:	Various (vans, mechanic truck, sedan, pickups )
Special Equipment: (LGP, Plow Type, Blade Type, With Foam, etc.)	N/A
Special Moving Requirements: (Oversized Load, etc)	N/A
Rates:	
Per Hour of Use w/Receiving State Supplying Fuel:	N/A
Per Hour of Use w/Sending State Supplying Fuel:	\$17.00/hr
Per Mile w/Receiving State Supplying Fuel:	N/A
Per Mile w/Sending State Supplying Fuel:	N/A
Minimum Daily Charge Equipment:	Equipment is charged for the operational period except when in travel status to and from the receiving state, and then is based on the hours of actual travel time.
Transport Cost per Mile w/Receiving State supplying fuel:	N/A
Transport Cost per Mile w/Sending State Supplying Fuel:	N/A
Minimum Daily Charge for Transport: NOTE: List Operator Cost in Personnel Section.	N/A

5  
6  
7  
8  
9

**FLORIDA FOREST SERVICE  
EQUIPMENT  
Rates Updated 2012**

Type:	Command Trailers
Make:	Various
Special Equipment: (LGP, Plow Type, Blade Type, With Foam, etc.)	Auxiliary Power – Generator Set Type 1 – 53’ - Type 2- varies 30’-35’, Type 3 - <30’
Special Moving Requirements: (Oversized Load, etc)	Heavy Duty Vehicle required for towing.



Rates:	N/A		
Per Hour of Use w/Receiving State Supplying Fuel:	N/A		
Per Hour of Use w/Sending State Supplying Fuel:	Type 1	Type 2	Type 3
	\$800 daily	\$550 daily	\$330.00 daily
Per Mile w/Receiving State Supplying Fuel:	N/A		
Per Mile w/Sending State Supplying Fuel:	N/A		
Minimum Daily Charge Equipment:	See above rates.		
Transport Cost per Mile w/Receiving State supplying fuel:	N/A		
Transport Cost per Mile w/Sending State Supplying Fuel:	N/A		
Minimum Daily Charge for Transport: NOTE: List Operator Cost in Personnel Section.	The cost of the transport is included with the daily rate.		

1  
2  
3  
4  
5

**FLORIDA FOREST SERVICE  
EQUIPMENT  
Rates Updated 2012**

Type:	Mowers (2 operators)		
Make:	Various		
Special Equipment: (LGP, Plow Type, Blade Type, With Foam, etc.)	N/A		
Special Moving Requirements: (Oversized Load, etc)	Requires hauling unit for road transport.		
Rates:	N/A		
Per Hour of Use w/Receiving State Supplying Fuel:	N/A		
Per Hour of Use w/Sending State Supplying Fuel:	Gryo-Track width > 72"	Cutting	Posi-Track/ John Deere Cutting width ,72"
	\$143.00/hr		\$88.00/hr
Per Mile w/Receiving State Supplying Fuel:	N/A		
Per Mile w/Sending State Supplying Fuel:	N/A		
Minimum Daily Charge Equipment:	Equipment is charged for the operational period except when in travel status to and from the receiving state, then it is based on the hours of actual travel time.		
Transport Cost per Mile w/Receiving State supplying fuel:	N/A		
Transport Cost per Mile w/Sending State Supplying Fuel:	N/A		
Minimum Daily Charge for Transport: NOTE: List Operator Cost in Personnel Section.	See transport rate.		

6

1  
2  
3  
4

**FLORIDA FOREST SERVICE  
EQUIPMENT  
Rates Updated 2012**

Type:	Portable Pumps
Make:	Various
Special Equipment: (LGP, Plow Type, Blade Type, With Foam, etc.)	Hose and appliances included.
Special Moving Requirements: (Oversized Load, etc)	Requires vehicle to transport unit to site.
Rates:	
Per Hour of Use w/Receiving State Supplying Fuel:	N/A
Per Hour of Use w/Sending State Supplying Fuel:	\$20.00/hr
Per Mile w/Receiving State Supplying Fuel:	N/A
Per Mile w/Sending State Supplying Fuel:	N/A
Minimum Daily Charge Equipment:	\$143.00
Transport Cost per Mile w/Receiving State supplying fuel:	N/A
Transport Cost per Mile w/Sending State Supplying Fuel:	N/A
Minimum Daily Charge for Transport:	N/A
NOTE: List Operator Cost in Personnel Section.	

5  
6  
7  
8  
9

**FLORIDA FOREST SERVICE  
EQUIPMENT  
Rates Updated 2012**

Type:	Tents
Make:	Various
Special Equipment: (LGP, Plow Type, Blade Type, With Foam, etc.)	Incident Tents includes generator.
Special Moving Requirements: (Oversized Load, etc)	Requires vehicle to transport unit to site.
Rate: Daily	\$200 Daily

10  
11  
12  
13  
14

**FLORIDA FOREST SERVICE  
AIRCRAFT  
Rates Updated 2012**

Type:	Patrol Aircraft (1 pilot)
Make:	Piper, Cessna
Model:	Archer II, 182
Special Equipment:	GPS/Air Attack Communication
Passenger Capacity (exclude pilot):	3
Load Capacity or Retardant Gallons:	N/A

15

Rate:	
Per Hour of Use w/Receiving State Supplying Fuel:	
Per Hour of Use w/Sending State Supplying Fuel:	\$110.00/hr
Minimum Daily Charge:	Three hours of flight time
NOTE: List Operator Cost in Personnel Section.	

1  
2  
3  
4  
5

**FLORIDA FOREST SERVICE  
AIRCRAFT  
Rates Updated 2012**

Type:	Light Twin (2 pilots)
Make:	Piper
Model:	Navajo
Special Equipment:	GPS/Air Attack Communication
Passenger Capacity (exclude pilot):	5
Load Capacity or Retardant Gallons:	N/A
Rate:	
Per Hour of Use w/Receiving State Supplying Fuel:	
Per Hour of Use w/Sending State Supplying Fuel:	\$605/hr
Minimum Daily Charge:	Three hours of flight time.
NOTE: List Operator Cost in Personnel Section.	

6  
7  
8  
9  
10

**FLORIDA FOREST SERVICE  
AIRCRAFT  
Rates Updated 2012**

Type:	Helicopter Type 2 (1 Pilot)
Make:	Bell
Model:	UHI (Super Huey), 209
Special Equipment:	Bambi Bucket
Passenger Capacity (exclude pilot):	None
Load Capacity or Retardant Gallons:	300 gallons
Rate::	
Per Hour of Use w/Receiving State Supplying Fuel:	
Per Hour of Use w/Sending State Supplying Fuel:	\$900.00/hr (plus actual fuel cost)*
Helicopter Tender (Helicopter support vehicle, mechanic & fuel trailer)	\$57.00/hr
Helicopter tender is required when helicopter is dispatched.	
Minimum Daily Charge:	Helicopter – three hours of flight time Tender – three hours
NOTE: List Operator Cost in Personnel Section.	

11  
12

1  
2  
3  
4

**FLORIDA FOREST SERVICE  
AIRCRAFT  
Rates Updated 2012**

Type:	Helicopter Type 3 (1 Pilot)
Make:	Bell
Model:	OH-58
Special Equipment:	Bambi Bucket
Passenger Capacity (exclude pilot):	None
Load Capacity or Retardant Gallons:	100 gallons
Rate: Per Hour of Use w/Receiving State Supplying Fuel:	
Per Hour of Use w/Sending State Supplying Fuel:	\$350.00/hr (plus actual fuel cost)*
Helicopter Tender (Helicopter support vehicle, mechanic & fuel trailer)	\$57.00/hr
Helicopter tender is required when helicopter is dispatched.	
Minimum Daily Charge: NOTE: List Operator Cost in Personnel Section.	Helicopter – three hours of flight time Tender – three hours

5  
6  
7  
8  
9  
10

**FLORIDA FOREST SERVICE  
PERSONNEL  
Rates Updated 2012**

**NOTE: All Compact Personnel are guaranteed a minimum of eight hours per day**

Qualifications:	(4) ICS Team Type 1, various qualified ICS positions
Standard Rate of Pay:	*Supervisory - \$30.00/hr. Non-supervisory - \$22.00/hr. (see below)
Overtime Rate:	
Per Diem Rate, if Food and Lodging are not Provided:	\$36.00 (meals) plus lodging

\*The supervisory and non-supervisory rates are determined by the ICS organization

11  
12  
13  
14  
15  
16  
17  
18

**GEORGIA FORESTRY COMMISSION  
EQUIPMENT  
Rates Updated 2012**

**NOTE: Receiving States are responsible for repairing damaged equipment and, sending States are responsible for routine maintenance**

Type:	Type III Tractor Plow
Make:	D5H, D4H, Case 1150
Special Equipment: (LGP, Plow Type, Blade Type, With Foam, etc.)	Fire Plow (wheeled type), Winch
Special Moving Requirements: (Oversized Load, etc)	None

19

Rates:	
Per Hour of Use w/Receiving State Supplying Fuel:	\$90 per hr – less actual fuel cost
Per Hour of Use w/Sending State Supplying Fuel:	\$90 per hr
Per Mile w/Receiving State Supplying Fuel:	
Per Mile w/Sending State Supplying Fuel:	N/A
Minimum Daily Charge Equipment:	N/A
Transport Cost per Mile w/Receiving State supplying fuel:	4 Hr daily
Transport Cost per Mile w/Sending State Supplying Fuel:	See Transport
Minimum Daily Charge for Transport:	See Transport
NOTE: List Operator Cost in Personnel Section.	N/A

1  
2  
3  
4  
5

**GEORGIA FORESTRY COMMISSION  
EQUIPMENT  
Rates Updated 2012**

Type:	Type IV Tractor Plow
Make:	D-4, JD650, TD-9
Special Equipment: (LGP, Plow Type, Blade Type, With Foam, etc.)	Fire Plow (lift or wheeled type), Winch
Special Moving Requirements: (Oversized Load, etc)	None
Rates:	
Per Hour of Use w/Receiving State Supplying Fuel:	\$90 per hr – less actual fuel cost
Per Hour of Use w/Sending State Supplying Fuel:	\$90 per hr
Per Mile w/Receiving State Supplying Fuel:	N/A
Per Mile w/Sending State Supplying Fuel:	N/A
Minimum Daily Charge Equipment:	4 Hr daily
Transport Cost per Mile w/Receiving State supplying fuel:	See Transport
Transport Cost per Mile w/Sending State Supplying Fuel:	See Transport
Minimum Daily Charge for Transport:	
NOTE: List Operator Cost in Personnel Section.	

6  
7

1  
2  
3  
4

**GEORGIA FORESTRY COMMISSION  
EQUIPMENT  
Rates Updated 2012**

Type:	Type V Tractor Plow
Make:	JD 450, D4C, TD -8
Special Equipment: (LGP, Plow Type, Blade Type, With Foam, etc.)	Fire Plow (lift or wheeled type), Winch
Special Moving Requirements: (Oversized Load, etc)	None
Rates:	
Per Hour of Use w/Receiving State Supplying Fuel:	\$90 per hr – less actual fuel cost
Per Hour of Use w/Sending State Supplying Fuel:	\$90 per hr
Per Mile w/Receiving State Supplying Fuel:	
Per Mile w/Sending State Supplying Fuel:	N/A
Minimum Daily Charge Equipment:	N/A
Transport Cost per Mile w/Receiving State supplying fuel:	4 Hr daily
Transport Cost per Mile w/Sending State Supplying Fuel:	See Transport
Minimum Daily Charge for Transport:	See Transport
NOTE: List Operator Cost in Personnel Section.	

5  
6  
7  
8  
9

**GEORGIA FORESTRY COMMISSION  
EQUIPMENT  
Rates Updated 2012**

Type:	Type VI Tractor Plow
Make:	JD 350, JD 400
Special Equipment: (LGP, Plow Type, Blade Type, With Foam, etc.)	Fire plow (lift type), winch
Special Moving Requirements: (Oversized Load, etc)	None
Rates:	
Per Hour of Use w/Receiving State Supplying Fuel:	\$90 per hr – less actual fuel cost
Per Hour of Use w/Sending State Supplying Fuel:	\$90 per hr
Per Mile w/Receiving State Supplying Fuel:	
Per Mile w/Sending State Supplying Fuel:	N/A
Minimum Daily Charge Equipment:	4 Hr daily
Transport Cost per Mile w/Receiving State supplying fuel:	See Transport

Transport Cost per Mile w/Sending State Supplying Fuel:	See Transport
Minimum Daily Charge for Transport: NOTE: List Operator Cost in Personnel Section.	

1  
2  
3  
4  
5

**GEORGIA FORESTRY COMMISSION  
EQUIPMENT  
Rates Updated 2012**

Type:	Transport (double axle drive on bed)
Make:	Any
Special Equipment: (LGP, Plow Type, Blade Type, With Foam, etc.)	None
Special Moving Requirements: (Oversized Load, etc)	None
Rates:	
Per Hour of Use w/Receiving State Supplying Fuel:	N/A
Per Hour of Use w/Sending State Supplying Fuel:	N/A
Per Mile w/Receiving State Supplying Fuel:	
Per Mile w/Sending State Supplying Fuel:	\$2.00 per Mile – less actual fuel cost
Minimum Daily Charge Equipment:	\$2.00 per Mile
Transport Cost per Mile w/Receiving State supplying fuel:	N/A
Transport Cost per Mile w/Sending State Supplying Fuel:	N/A
Minimum Daily Charge for Transport: NOTE: List Operator Cost in Personnel Section.	N/A N/A

6  
7  
8  
9  
10

**GEORGIA FORESTRY COMMISSION  
EQUIPMENT  
Rates Updated 2012**

Type:	Truck Tractor
Make:	Any
Special Equipment: (LGP, Plow Type, Blade Type, With Foam, etc.)	None
Special Moving Requirements: (Oversized Load, etc)	May require Permit
Rates:	
Per Hour of Use w/Receiving State Supplying Fuel:	N/A
Per Hour of Use w/Sending State Supplying Fuel:	N/A
Per Mile w/Receiving State Supplying Fuel:	
Per Mile w/Sending State Supplying Fuel:	\$2.50 per Mile – less actual fuel cost

Minimum Daily Charge Equipment:	\$2.50 per Mile
Transport Cost per Mile w/Receiving State supplying fuel:	N/A
Transport Cost per Mile w/Sending State Supplying Fuel:	N/A
Minimum Daily Charge for Transport:	N/A
NOTE: List Operator Cost in Personnel Section.	N/A

1  
2  
3  
4  
5

**GEORGIA FORESTRY COMMISSION  
EQUIPMENT  
Rates Updated 2012**

Type:	Engine Type III, (4x4)
Make:	Any
Special Equipment: (LGP, Plow Type, Blade Type, With Foam, etc.)	Pump-tank 300 gallons, Foam, 2 man crew (ENGB + ENOP)
Special Moving Requirements: (Oversized Load, etc)	None
Rates:	
Per Hour of Use w/Receiving State Supplying Fuel:	\$100 per Hr – less actual fuel cost
Per Hour of Use w/Sending State Supplying Fuel:	\$100 per Hr
Per Mile w/Receiving State Supplying Fuel:	
Per Mile w/Sending State Supplying Fuel:	\$1.00 per Mile – less actual fuel cost
Minimum Daily Charge Equipment:	\$1.00 per Mile
Transport Cost per Mile w/Receiving State supplying fuel:	4 Hr daily
Transport Cost per Mile w/Sending State Supplying Fuel:	N/A
Minimum Daily Charge for Transport:	N/A
NOTE: List Operator Cost in Personnel Section.	

6  
7  
8  
9  
10

**GEORGIA FOESTRY COMMISSION  
EQUIPMENT  
Rates Updated 2012**

Type:	Engine Type VI or VII (4x4)
Make:	Any
Special Equipment: (LGP, Plow Type, Blade Type, With Foam, etc.)	Pump-tank 150-300 gallons, Foam, Winch, 2 man crew (ENGB + ENOP)
Special Moving Requirements: (Oversized Load, etc)	None

11



Rates:	
Per Hour of Use w/Receiving State Supplying Fuel:	\$75 per Hour of pump use – less actual fuel cost
Per Hour of Use w/Sending State Supplying Fuel:	\$75 per Hour of pump use
Per Mile w/Receiving State Supplying Fuel:	
Per Mile w/Sending State Supplying Fuel:	\$.80 per Mile – less actual fuel cost
Minimum Daily Charge Equipment:	\$.80 per Mile
Transport Cost per Mile w/Receiving State supplying fuel:	4 Hr daily
Transport Cost per Mile w/Sending State Supplying Fuel:	N/A
Minimum Daily Charge for Transport:	N/A
NOTE: List Operator Cost in Personnel Section.	

1  
2  
3  
4  
5

**GEORGIA FORESTRY COMMISSION  
EQUIPMENT  
Rates Updated 2012**

Type:	Pickup (4800-5900 GVWR)
Make:	Any
Special Equipment: (LGP, Plow Type, Blade Type, With Foam, etc.)	None (Pump & Water available but not used) Transportation only
Special Moving Requirements: (Oversized Load, etc)	None
Rates:	
Per Hour of Use w/Receiving State Supplying Fuel:	N/A
Per Hour of Use w/Sending State Supplying Fuel:	N/A
Per Mile w/Receiving State Supplying Fuel:	
Per Mile w/Sending State Supplying Fuel:	\$.75 per Mile – less actual fuel cost
Minimum Daily Charge Equipment:	\$.75 per Mile
Transport Cost per Mile w/Receiving State supplying fuel:	N/A
Transport Cost per Mile w/Sending State Supplying Fuel:	N/A
Minimum Daily Charge for Transport:	N/A
NOTE: List Operator Cost in Personnel Section.	

6  
7

1  
2  
3  
4

**GEORGIA FORESTRY COMMISSION  
EQUIPMENT  
Rates Updated 2012**

Type:	Sedan (full, compact), Station Wagon, Pickup (compact/mid size), Van (5-9 pass)
Make:	Any
Special Equipment: (LGP, Plow Type, Blade Type, With Foam, etc.)	None
Special Moving Requirements: (Oversized Load, etc)	None
Rates:	
Per Hour of Use w/Receiving State Supplying Fuel:	N/A
Per Hour of Use w/Sending State Supplying Fuel:	N/A
Per Mile w/Receiving State Supplying Fuel:	
Per Mile w/Sending State Supplying Fuel:	\$.60 per Mile – less actual fuel cost.
Minimum Daily Charge Equipment:	\$.60 per Mile
Transport Cost per Mile w/Receiving State supplying fuel:	N/A
Transport Cost per Mile w/Sending State Supplying Fuel:	N/A
Minimum Daily Charge for Transport:	N/A
NOTE: List Operator Cost in Personnel Section.	N/A

5  
6  
7  
8  
9

**GEORGIA FORESTRY COMMISSION  
EQUIPMENT  
Rates Updated 2012**

Type:	Van (15 pass)
Make:	Any
Special Equipment: (LGP, Plow Type, Blade Type, With Foam, etc.)	None
Special Moving Requirements: (Oversized Load, etc)	None

10

Rates:	
Per Hour of Use w/Receiving State Supplying Fuel:	N/A
Per Hour of Use w/Sending State Supplying Fuel:	N/A
Per Mile w/Receiving State Supplying Fuel:	
Per Mile w/Sending State Supplying Fuel:	\$.75 per Mile – less actual fuel cost
Minimum Daily Charge Equipment:	\$.75 per Mile
Transport Cost per Mile w/Receiving State supplying fuel:	\$100 per day
Transport Cost per Mile w/Sending State Supplying Fuel:	N/A
Minimum Daily Charge for Transport:	N/A
NOTE: List Operator Cost in Personnel Section.	N/A

1  
2  
3  
4  
5

**GEORGIA FORESTRY COMMISSION  
EQUIPMENT  
Rates Updated 2012**

Type:	Maintenance Truck (aircraft)
Make:	Ford F-350
Special Equipment: (LGP, Plow Type, Blade Type, With Foam, etc.)	600 Gallon Fuel trailer, maintenance person
Special Moving Requirements: (Oversized Load, etc)	None
Rates:	
Per Hour of Use w/Receiving State Supplying Fuel:	N/A
Per Hour of Use w/Sending State Supplying Fuel:	N/A
Per Mile w/Receiving State Supplying Fuel:	
Per Mile w/Sending State Supplying Fuel:	\$2.00 per Mile – less actual fuel cost
Minimum Daily Charge Equipment:	\$2.00 per Mile
Transport Cost per Mile w/Receiving State supplying fuel:	\$300 per Day
Transport Cost per Mile w/Sending State Supplying Fuel:	N/A
Minimum Daily Charge for Transport:	N/A
NOTE: List Operator Cost in Personnel Section.	

6  
7

1  
2  
3  
4

**GEORGIA FORESTRY COMMISSION  
EQUIPMENT  
Rates Updated 2012**

Type:	Forklift
Make:	18,000 to 50,000 lbs
Special Equipment: (LGP, Plow Type, Blade Type, With Foam, etc.)	Operator
Special Moving Requirements: (Oversized Load, etc)	None
Rates:	
Per Hour of Use w/Receiving State Supplying Fuel:	\$40 per Hr – less actual fuel cost
Per Hour of Use w/Sending State Supplying Fuel:	
Per Mile w/Receiving State Supplying Fuel:	\$40 per Hr
Per Mile w/Sending State Supplying Fuel:	N/A
Minimum Daily Charge Equipment:	N/A
Transport Cost per Mile w/Receiving State supplying fuel:	N/A
Transport Cost per Mile w/Sending State Supplying Fuel:	See Truck Tractor
Minimum Daily Charge for Transport:	See Truck Tractor
NOTE: List Operator Cost in Personnel Section.	N/A

5  
6  
7  
8  
9

**GEORGIA FORESTRY COMMISSION  
EQUIPMENT  
Rates Updated 2012**

Type:	Forklift
Make:	18,000 max
Special Equipment: (LGP, Plow Type, Blade Type, With Foam, etc.)	Operator
Special Moving Requirements: (Oversized Load, etc)	None
Rates:	
Per Hour of Use w/Receiving State Supplying Fuel:	\$25 per Hr – less actual fuel cost
Per Hour of Use w/Sending State Supplying Fuel:	
Per Mile w/Receiving State Supplying Fuel:	\$25 per Hr
Per Mile w/Sending State Supplying Fuel:	N/A
Minimum Daily Charge Equipment:	N/A
Transport Cost per Mile w/Receiving State supplying fuel:	N/A

Transport Cost per Mile w/Sending State Supplying Fuel:	See Transport
Minimum Daily Charge for Transport: NOTE: List Operator Cost in Personnel Section.	See Transport N/A

1  
2  
3  
4  
5

**GEORGIA FORESTRY COMMISSION  
EQUIPMENT  
Rates Updated 2012**

Type:	Logistics Support Trailer
Make:	
Special Equipment: (LGP, Plow Type, Blade Type, With Foam, etc.)	22 ft. – 30 ft. Travel Trailer
Special Moving Requirements: (Oversized Load, etc)	None
Rates:	
Per Hour of Use w/Receiving State Supplying Fuel:	N/A
Per Hour of Use w/Sending State Supplying Fuel:	N/A
Per Mile w/Receiving State Supplying Fuel:	N/A
Per Mile w/Sending State Supplying Fuel:	N/A
Minimum Daily Charge Equipment:	\$250 per Day
Transport Cost per Mile w/Receiving State supplying fuel:	See Maintenance Truck
Transport Cost per Mile w/Sending State Supplying Fuel:	See Maintenance Truck
Minimum Daily Charge for Transport: NOTE: List Operator Cost in Personnel Section.	N/A

6  
7  
8  
9  
10

**GEORGIA FORESTRY COMMISSION  
EQUIPMENT  
Rates Updated 2012**

Type:	Mobile Cache Trailer
Make:	
Special Equipment: (LGP, Plow Type, Blade Type, With Foam, etc.)	Firefighting Equipment
Special Moving Requirements: (Oversized Load, etc)	None
Rates:	
Per Hour of Use w/Receiving State Supplying Fuel:	N/A
Per Hour of Use w/Sending State Supplying Fuel:	N/A
Per Mile w/Receiving State Supplying Fuel:	N/A
Per Mile w/Sending State Supplying Fuel:	N/A

Minimum Daily Charge Equipment:	\$100 per Day
Transport Cost per Mile w/Receiving State supplying fuel:	See Pickup (4800-5900 GVWR)
Transport Cost per Mile w/Sending State Supplying Fuel:	See Pickup (4800-5900 GVWR)
Minimum Daily Charge for Transport: NOTE: List Operator Cost in Personnel Section.	N/A

1  
2  
3  
4  
5

**GEORGIA FORESTRY COMMISSION  
EQUIPMENT  
Rates Updated 2012**

Type:	Mobile Command Trailer
Make:	IDS
Special Equipment: (LGP, Plow Type, Blade Type, With Foam, etc.)	Breakaway Generator
Special Moving Requirements: (Oversized Load, etc)	Truck Tractor
Rates:	
Per Hour of Use w/Receiving State Supplying Fuel:	N/A
Per Hour of Use w/Sending State Supplying Fuel:	N/A
Per Mile w/Receiving State Supplying Fuel:	N/A
Per Mile w/Sending State Supplying Fuel:	N/A
Minimum Daily Charge Equipment:	\$800 per day
Transport Cost per Mile w/Receiving State supplying fuel:	See Truck Tractor
Transport Cost per Mile w/Sending State Supplying Fuel:	See Truck Tractor
Minimum Daily Charge for Transport: NOTE: List Operator Cost in Personnel Section.	N/A

6  
7  
8  
9  
10

**GEORGIA FORESTRY COMMISSION  
EQUIPMENT  
Rates Updated 2012**

Type:	Portable Pump
Make:	Mark III
Special Equipment: (LGP, Plow Type, Blade Type, With Foam, etc.)	
Special Moving Requirements: (Oversized Load, etc)	None
Rates:	
Per Hour of Use w/Receiving State Supplying Fuel:	\$5 per Hour of pump use – less actual fuel cost

Per Hour of Use w/Sending State Supplying Fuel:	\$5 per Hour of pump use
Per Mile w/Receiving State Supplying Fuel:	N/A
Per Mile w/Sending State Supplying Fuel:	N/A
Minimum Daily Charge Equipment:	\$25 per Day
Transport Cost per Mile w/Receiving State supplying fuel:	N/A
Transport Cost per Mile w/Sending State Supplying Fuel:	N/A
Minimum Daily Charge for Transport: NOTE: List Operator Cost in Personnel Section.	N/A

1  
2  
3  
4  
5

**GEORGIA FORESTRY COMMISSION  
EQUIPMENT  
Rates Updated 2012**

Type:	Portable Pump
Make:	6" irrigation
Special Equipment: (LGP, Plow Type, Blade Type, With Foam, etc.)	
Special Moving Requirements: (Oversized Load, etc)	None
Rates:	
Per Hour of Use w/Receiving State Supplying Fuel:	\$25 per Hour of pump use – less actual fuel cost
Per Hour of Use w/Sending State Supplying Fuel:	\$25 per Hour of pump use
Per Mile w/Receiving State Supplying Fuel:	N/A
Per Mile w/Sending State Supplying Fuel:	N/A
Minimum Daily Charge Equipment:	\$350 per Day
Transport Cost per Mile w/Receiving State supplying fuel:	See Pickup (4800-5900 GVWR)
Transport Cost per Mile w/Sending State Supplying Fuel:	See Pickup (4800-5900 GVWR)
Minimum Daily Charge for Transport: NOTE: List Operator Cost in Personnel Section.	N/A

6  
7

1  
2  
3  
4

**GEORGIA FORESTRY COMMISSION  
EQUIPMENT  
Rates Updated 2012**

Type:	Water Trailer
Make:	Any
Special Equipment: (LGP, Plow Type, Blade Type, With Foam, etc.)	400 Gallon capacity (Potable or non-potable)
Special Moving Requirements: (Oversized Load, etc)	None
Rates:	
Per Hour of Use w/Receiving State Supplying Fuel:	N/A
Per Hour of Use w/Sending State Supplying Fuel:	N/A
Per Mile w/Receiving State Supplying Fuel:	N/A
Per Mile w/Sending State Supplying Fuel:	N/A
Minimum Daily Charge Equipment:	\$55 per Day
Transport Cost per Mile w/Receiving State supplying fuel:	See Pickup (4800-5900 GVWR)
Transport Cost per Mile w/Sending State Supplying Fuel:	See Pickup (4800-5900 GVWR)
Minimum Daily Charge for Transport:	N/A
NOTE: List Operator Cost in Personnel Section.	

5  
6  
7  
8  
9

**GEORGIA FORESTRY COMMISSION  
EQUIPMENT  
Rates Updated 2012**

Type:	General Purpose Tents
Make:	
Special Equipment: (LGP, Plow Type, Blade Type, With Foam, etc.)	12 x 12 Canopy 19 X 35 ICS Command Shelter – Requires set up crew (3 person)
Special Moving Requirements: (Oversized Load, etc)	None
Rates:	
Per Hour of Use w/Receiving State Supplying Fuel:	N/A
Per Hour of Use w/Sending State Supplying Fuel:	N/A
Per Mile w/Receiving State Supplying Fuel:	N/A
Per Mile w/Sending State Supplying Fuel:	N/A
Minimum Daily Charge Equipment:	\$50 per Day (Canopy)/ \$150 per Day (Command Shelter)
Transport Cost per Mile w/Receiving State supplying fuel:	See Pickup (4800-5900 GVWR)



Transport Cost per Mile w/Sending State Supplying Fuel:	See Pickup (4800-5900 GVWR)
Minimum Daily Charge for Transport: NOTE: List Operator Cost in Personnel Section.	N/A

1  
2  
3  
4  
5

**GEORGIA FORESTRY COMMISSION  
AIRCRAFT  
Rates Updated 2012**

Type:	Type III Helicopter
Make:	Bell 407
Model:	
Special Equipment:	W/ Water Bucket
Passenger Capacity (exclude pilot):	6
Load Capacity or Retardant Gallons:	210 Gallons
Rate::	
Per Hour of Use w/Receiving State Supplying Fuel:	\$600 per hr.
Per Hour of Use w/Sending State Supplying Fuel:	\$600 per hr. + Actual Fuel Cost
Minimum Daily Charge:	2 Hr Minimum
NOTE: List Operator Cost in Personnel Section:	

6  
7  
8  
9  
10

**GEORGIA FORESTRY COMMISSION  
AIRCRAFT  
Rates Updated 2012**

Type:	Airplane
Make:	Cessna 182
Model:	
Special Equipment:	
Passenger Capacity (exclude pilot):	3
Load Capacity or Retardant Gallons:	
Rate::	
Per Hour of Use w/Receiving State Supplying Fuel:	\$200 per hr.
Per Hour of Use w/Sending State Supplying Fuel:	\$200 per hr. + Actual Fuel Cost
Minimum Daily Charge:	2 Hr Minimum
NOTE: List Operator Cost in Personnel Section:	

11  
12  
13  
14  
15  
16

**GEORGIA FORESTRY COMMISSION  
PERSONNEL  
Rates Updated 2012**

**NOTE: All Compact Personnel are guaranteed a Minimum of Eight Hours per Day**

Qualifications:	NWCG Qualified ICS position
Standard Rate of Pay:	Employee salary Rate
Overtime Rate:	1.5 times pay over 40 hrs a week
Per Diem Rate, if Food and Lodging are not Provided:	Federal per diem rate for locality

**GEORGIA FORESTRY COMMISSION  
PERSONNEL**

**Rates Updated 2012**

**NOTE: All Compact Personnel are guaranteed a Minimum of Eight Hours per Day**

Qualifications:	Transportation Drivers, Mechanics, non ICS positions
Standard Rate of Pay:	Employee salary Rate
Overtime Rate:	1.5 times pay over 40 hrs a week
Per Diem Rate, if Food and Lodging are not Provided:	Federal per diem rate for locality

**GEORGIA FORESTRY COMMISSION  
PERSONNEL**

**Rates Updated 2012**

**NOTE: All Compact Personnel are guaranteed a Minimum of Eight Hours per Day**

Qualifications:	Georgia State Qualified: Equipment Operator, Engine Crew, Hand Crew
Standard Rate of Pay:	Employee salary Rate
Overtime Rate:	1.5 times pay over 40 hrs a week
Per Diem Rate, if Food and Lodging are not Provided:	Federal per diem rate for locality

**KENTUCKY DIVISION OF FORESTRY  
EQUIPMENT**

**Rates Updated 2012**

**NOTE: Receiving States are responsible for repairing damaged equipment and, sending States are responsible for routine maintenance**

Type:	Medium tractor/plow unit (Type IV)
Make:	JD-650 (105 HP/LT) Environmental Cab
Special Equipment: (LGP, Plow Type, Blade Type, With Foam, etc.)	Rear Lift Plow
Special Moving Requirements: (Oversized Load, etc)	Truck Transport Required
Rates:	
Per Hour of Use w/Receiving State Supplying Fuel:	\$75/hr.
Per Hour of Use w/Sending State Supplying Fuel:	\$75/hr.
Per Mile w/Receiving State Supplying Fuel:	
Per Mile w/Sending State Supplying Fuel:	
Minimum Daily Charge Equipment:	
Transport Cost per Mile w/Receiving State supplying fuel:	Equipment is charged for the operational period except when in travel status to and from the receiving state, and then is based on the hours of actual travel time.
Transport Cost per Mile w/Sending State Supplying	\$1.50/mi.

Fuel:	
Minimum Daily Charge for Transport:	\$1.50/mi
NOTE: List Operator Cost in Personnel Section.	None

1  
2  
3  
4  
5  
6  
7

**KENTUCKY DIVISION OF FORESTRY  
EQUIPMENT  
Rates Updated 2012**

**NOTE: Receiving States are responsible for repairing damaged equipment and, sending States are responsible for routine maintenance**

Type:	Light dozer unit (Type III)
Make:	JD-550 (95 HP/LT) Environmental Cab
Special Equipment: (LGP, Plow Type, Blade Type, With Foam, etc.)	Rear Mounted Winch
Special Moving Requirements: (Oversized Load, etc)	Truck Transport Required
Rates:	
Per Hour of Use w/Receiving State Supplying Fuel:	\$65/hr.
Per Hour of Use w/Sending State Supplying Fuel:	\$65/hr.
Per Mile w/Receiving State Supplying Fuel:	
Per Mile w/Sending State Supplying Fuel:	
Minimum Daily Charge Equipment:	
Transport Cost per Mile w/Receiving State supplying fuel:	Equipment is charged for the operational period except when in travel status to and from the receiving state, and then is based on the hours of actual travel time.
Transport Cost per Mile w/Sending State Supplying Fuel:	\$1.50/mi.
Minimum Daily Charge for Transport:	\$1.50/mi
NOTE: List Operator Cost in Personnel Section.	None

8  
9  
10  
11  
12  
13  
14

**KENTUCKY DIVISION OF FORESTRY  
EQUIPMENT  
Rates Updated 2012**

**NOTE: Receiving States are responsible for repairing damaged equipment and, sending States are responsible for routine maintenance**

Type:	Light tractor/plow unit (Type V)
Make:	JD-450 (85HP/LT)
Special Equipment: (LGP, Plow Type, Blade Type, With Foam, etc.)	Rear Lift Plow
Special Moving Requirements: (Oversized Load, etc)	Truck Transport Required
Rates:	
Per Hour of Use w/Receiving State Supplying Fuel:	\$60/hr.

Per Hour of Use w/Sending State Supplying Fuel:	\$60/hr.
Per Mile w/Receiving State Supplying Fuel:	
Per Mile w/Sending State Supplying Fuel:	
Minimum Daily Charge Equipment:	
Transport Cost per Mile w/Receiving State supplying fuel:	Equipment is charged for the operational period except when in travel status to and from the receiving state, and then is based on the hours of actual travel time.
Transport Cost per Mile w/Sending State Supplying Fuel:	\$1.50/mi.
Minimum Daily Charge for Transport:	\$1.50/mi
NOTE: List Operator Cost in Personnel Section.	None

1  
2  
3  
4  
5

**KENTUCKY DIVISION OF FORESTRY  
EQUIPMENT  
Rates Updated 2012**

Type:	Type VI Engine (75)
Make:	Mallory
Special Equipment: (LGP, Plow Type, Blade Type, With Foam, etc.)	4x4 with Foam, 200 gal. tank
Special Moving Requirements: (Oversized Load, etc)	None
Rates:	
Per Hour of Use w/Receiving State Supplying Fuel:	\$35/hr.
Per Hour of Use w/Sending State Supplying Fuel:	\$35/hr.
Per Mile w/Receiving State Supplying Fuel:	
Per Mile w/Sending State Supplying Fuel:	\$.60/mi.
Minimum Daily Charge Equipment:	\$.60/mi.
Transport Cost per Mile w/Receiving State supplying fuel:	Equipment is charged for the operational period except when in travel status to and from the receiving state, and then is based on the hours of actual travel time
Transport Cost per Mile w/Sending State Supplying Fuel:	N/A
Minimum Daily Charge for Transport:	N/A
NOTE: List Operator Cost in Personnel Section.	N/A

6  
7

1  
2  
3  
4

**KENTUCKY DIVISION OF FORESTRY  
EQUIPMENT  
Rates Updated 2012**

Type:	Pickups
Make:	Various
Special Equipment: (LGP, Plow Type, Blade Type, With Foam, etc.)	4x4
Special Moving Requirements: (Oversized Load, etc)	None
Rates:	
Per Hour of Use w/Receiving State Supplying Fuel:	N/A
Per Hour of Use w/Sending State Supplying Fuel:	N/A
Per Mile w/Receiving State Supplying Fuel:	
Per Mile w/Sending State Supplying Fuel:	\$.50/mi.
Minimum Daily Charge Equipment:	\$.50/mi.
Transport Cost per Mile w/Receiving State supplying fuel:	None
Transport Cost per Mile w/Sending State Supplying Fuel:	N/A
Minimum Daily Charge for Transport: NOTE: List Operator Cost in Personnel Section.	N/A N/A

5  
6  
7  
8  
9

**KENTUCKY DIVISION OF FORESTRY  
EQUIPMENT  
Rates Updated 2012**

Type:	Helicopter Buckets
Make:	Bambi (7 – 660 gallon buckets)
Special Equipment: (LGP, Plow Type, Blade Type, With Foam, etc.)	Foam Sack
Special Moving Requirements: (Oversized Load, etc)	Receiving state pays shipping charges.
Rates:	
Per Hour of Use w/Receiving State Supplying Fuel:	No charge. Receiving state responsible for any needed repairs or replacements after use.
Per Hour of Use w/Sending State Supplying Fuel:	N/A
Per Mile w/Receiving State Supplying Fuel:	N/A
Per Mile w/Sending State Supplying Fuel:	N/A
Minimum Daily Charge Equipment:	N/A
Transport Cost per Mile w/Receiving State supplying fuel:	N/A

Transport Cost per Mile w/Sending State Supplying Fuel:	N/A
Minimum Daily Charge for Transport: NOTE: List Operator Cost in Personnel Section.	N/A

1  
2  
3  
4  
5

**KENTUCKY DIVISION OF FORESTRY  
EQUIPMENT  
Rates Updated 2012**

Type:	Mobile Helicopter Repair Shop
Make:	Modified Trailer
Special Equipment: (LGP, Plow Type, Blade Type, With Foam, etc.)	Self-contained machine shop with spare helicopter bucket parts for repairs. Also has radio and cell phone communications.
Special Moving Requirements: (Oversized Load, etc)	Truck Transport Required.
Rates:	
Per Hour of Use w/Receiving State Supplying Fuel:	\$50/hr.
Per Hour of Use w/Sending State Supplying Fuel:	\$50/hr.
Per Mile w/Receiving State Supplying Fuel:	
Per Mile w/Sending State Supplying Fuel:	N/A
Minimum Daily Charge Equipment:	N/A
Transport Cost per Mile w/Receiving State supplying fuel:	Equipment is charged for the operational period except when in travel status to and from the receiving state, and then is based on the hours of actual travel time
Transport Cost per Mile w/Sending State Supplying Fuel:	\$1.50/mi.
Minimum Daily Charge for Transport: NOTE: List Operator Cost in Personnel Section.	\$1.50/mi. None

6  
7  
8  
9  
10  
11

**KENTUCKY DIVISION OF FORESTRY  
PERSONNEL  
Rates Updated 2012**

**NOTE: All Compact Personnel are guaranteed a Minimum of Eight Hours per Day**

Qualifications:	Various Individual Overhead
Standard Rate of Pay:	Varies with Individual
Overtime Rate:	Time and one-half over 40 hours
Per Diem Rate, if Food and Lodging are not Provided:	\$30/day (unless a high rate area) + Actual Lodging Costs.

12  
13

**KENTUCKY DIVISION OF FORESTRY  
PERSONNEL  
Rates Updated 2012**

**NOTE: All Compact Personnel are guaranteed a Minimum of Eight Hours per Day**

Qualifications:	Type II IA Crew/Engine Strike Team
Standard Rate of Pay:	Varies with individual
Overtime Rate:	Time and one-half over 40 hours
Per Diem Rate, if Food and Lodging are not Provided:	\$30/day (unless a high rate area) + Actual Lodging Costs.

**LOUISIANA DEPARTMENT OF FORESTRY  
EQUIPMENT  
Rates Updated 2012**

**NOTE: Receiving States are responsible for repairing damaged equipment and, sending States are responsible for routine maintenance**

Type:	Tractor Plow Unit / Dozer
Make:	John Deere 750 LGP (environmental cab)
Special Equipment: (LGP, Plow Type, Blade Type, With Foam, etc.)	Lift Type Fesco Plow, straight blade with six-way movement and rear mounted winch. Two-way programmable radio
Special Moving Requirements: (Oversized Load, etc)	Semi Tractor Truck and Trailer "Oversized Load"
Rates:	
Per Hour of Use w/Receiving State Supplying Fuel:	\$90/hour
Per Hour of Use w/Sending State Supplying Fuel:	N/A
Per Mile w/Receiving State Supplying Fuel:	
Per Mile w/Sending State Supplying Fuel:	N/A
Minimum Daily Charge Equipment:	
Transport Cost per Mile w/Receiving State supplying fuel:	Five Hours Per Day
Transport Cost per Mile w/Sending State Supplying Fuel:	Semi Tractor Truck and Trailer Required @ \$3.00/mile.
Minimum Daily Charge for Transport:	N/A
NOTE: List Operator Cost in Personnel Section.	N/A

**LOUISIANA DEPARTMENT OF FORESTRY  
EQUIPMENT  
Rates Updated 2012**

Type:	Tractor Plow Unit / Dozer
Make:	JohnDeere650J-LGP/650H-LGP (environmental cab)
Special Equipment: (LGP, Plow Type, Blade Type, With Foam, etc.)	Lift Type Plow with V-blade or straight blade with six-way movement (winch available upon request)

	Two-way programmable radio
Special Moving Requirements: (Oversized Load, etc)	Mack GU813 transport required "Oversized Load"
Rates:	
Per Hour of Use w/Receiving State Supplying Fuel:	\$75/hour
Per Hour of Use w/Sending State Supplying Fuel:	N/A
Per Mile w/Receiving State Supplying Fuel:	N/A
Per Mile w/Sending State Supplying Fuel:	N/A
Minimum Daily Charge Equipment:	Five Hours Per Day
Transport Cost per Mile w/Receiving State supplying fuel:	Truck (Mack GU813) Required @ \$2.50/mile.
Transport Cost per Mile w/Sending State Supplying Fuel:	N/A
Minimum Daily Charge for Transport:	N/A
NOTE: List Operator Cost in Personnel Section.	

1  
2  
3  
4  
5

**LOUISIANA DEPARTMENT OF FORESTRY  
EQUIPMENT  
Rates Updated 2012**

Type:	Semi Tractor Truck with Trailer
Make:	Various
Special Equipment: (LGP, Plow Type, Blade Type, With Foam, etc.)	Two way programmable radio, hand tools
Special Moving Requirements: (Oversized Load, etc)	
Rates:	
Per Hour of Use w/Receiving State Supplying Fuel:	N/A
Per Hour of Use w/Sending State Supplying Fuel:	N/A
Per Mile w/Receiving State Supplying Fuel:	\$3.00 per mile
Per Mile w/Sending State Supplying Fuel:	N/A
Minimum Daily Charge Equipment:	N/A
Transport Cost per Mile w/Receiving State supplying fuel:	\$3.00 per mile
Transport Cost per Mile w/Sending State Supplying Fuel:	N/A
Minimum Daily Charge for Transport:	N/A
NOTE: List Operator Cost in Personnel Section.	

6  
7



1  
2  
3  
4

**LOUISIANA DEPARTMENT OF FORESTRY  
EQUIPMENT  
Rates Updated 2012**

Type:	Transport Diesel (Tandem Axle)
Make:	Mack GU813
Special Equipment: (LGP, Plow Type, Blade Type, With Foam, etc.)	Two way programmable radio, hand tools
Special Moving Requirements: (Oversized Load, etc)	“Oversized Load”
Rates:	
Per Hour of Use w/Receiving State Supplying Fuel:	N/A
Per Hour of Use w/Sending State Supplying Fuel:	N/A
Per Mile w/Receiving State Supplying Fuel:	
Per Mile w/Sending State Supplying Fuel:	\$2.50 per mile
Minimum Daily Charge Equipment:	N/A
Transport Cost per Mile w/Receiving State supplying fuel:	N/A
	\$
Transport Cost per Mile w/Sending State Supplying Fuel:	2.50 per mile
Minimum Daily Charge for Transport:	N/A
NOTE: List Operator Cost in Personnel Section.	N/A

5  
6  
7  
8  
9

**LOUISIANA DEPARTMENT OF FORESTRY  
EQUIPMENT  
Rates Updated 2012**

Type:	Type V or VI Engines
Make:	GMC 5500 or Ford F-350
Special Equipment: (LGP, Plow Type, Blade Type, With Foam, etc.)	400 gal. tank or 200 gal. tank Two way programmable radio
Special Moving Requirements: (Oversized Load, etc)	
Rates:	
Per Hour of Use w/Receiving State Supplying Fuel:	\$40.00 per hour
Per Hour of Use w/Sending State Supplying Fuel:	N/A
Per Mile w/Receiving State Supplying Fuel:	
Per Mile w/Sending State Supplying Fuel:	\$.65 per mile
Minimum Daily Charge Equipment:	N/A
Transport Cost per Mile w/Receiving State supplying fuel:	N/A

Transport Cost per Mile w/Sending State Supplying Fuel:	\$ .65 per mile
Minimum Daily Charge for Transport:	N/A
NOTE: List Operator Cost in Personnel Section.	N/A

1  
2  
3  
4  
5

**LOUISIANA DEPARTMENT OF FORESTRY  
EQUIPMENT  
Rates Updated 2012**

Type:	Passenger Vehicles
Make:	Sedan; Pickup Truck; Sport Utility Vehicle; Van
Special Equipment: (LGP, Plow Type, Blade Type, With Foam, etc.)	
Special Moving Requirements: (Oversized Load, etc)	
Rates:	
Per Hour of Use w/Receiving State Supplying Fuel:	N/A
Per Hour of Use w/Sending State Supplying Fuel:	N/A
Per Mile w/Receiving State Supplying Fuel:	
Per Mile w/Sending State Supplying Fuel:	\$.52 per mile
Minimum Daily Charge Equipment:	N/A
Transport Cost per Mile w/Receiving State supplying fuel:	N/A
Transport Cost per Mile w/Sending State Supplying Fuel:	\$.52 per mile
Minimum Daily Charge for Transport:	N/A
NOTE: List Operator Cost in Personnel Section.	N/A

6  
7  
8  
9  
10

**LOUISIANA DEPARTMENT OF FORESTRY  
EQUIPMENT  
Rates Updated 2012**

Type:	Refrigerated Trailer
Make:	Various
Special Equipment: (LGP, Plow Type, Blade Type, With Foam, etc.)	
Special Moving Requirements: (Oversized Load, etc)	Semi Tractor Truck
Rates:	
Per Hour of Use w/Receiving State Supplying Fuel:	N/A
Per Hour of Use w/Sending State Supplying Fuel:	N/A
Per Mile w/Receiving State Supplying Fuel:	N/A
Per Mile w/Sending State Supplying Fuel:	N/A

Minimum Daily Charge Equipment:	
Transport Cost per Mile w/Receiving State supplying fuel:	\$275.00 per day (Dry)
Transport Cost per Mile w/Sending State Supplying Fuel:	Semi Tractor Truck Required @ \$3.00/mile
Minimum Daily Charge for Transport:	N/A
NOTE: List Operator Cost in Personnel Section.	N/A

1  
2  
3  
4  
5

**LOUISIANA DEPARTMENT OF FORESTRY  
AIRCRAFT  
Rates Updated 2012**

Type:	Detection Aircraft
Make:	Cessna 182T
Model:	2003
Special Equipment:	Two way programmable radio, dual GPS
Passenger Capacity (exclude pilot):	3
Load Capacity or Retardant Gallons:	N/A
Rate::	
Per Hour of Use w/Receiving State Supplying Fuel:	\$120/hour
Per Hour of Use w/Sending State Supplying Fuel:	N/A
Minimum Daily Charge:	Five hours per day
NOTE: List Operator Cost in Personnel Section:	

6  
7  
8  
9  
10  
11

**LOUISIANA DEPARTMENT OF FORESTRY  
PERSONNEL  
Rates Reviewed 2012**

**NOTE: All Compact Personnel are guaranteed a Minimum of Eight Hours per Day**

Qualifications:	Two Person Tractor Plow/Dozer Unit
Standard Rate of Pay:	Actual Cost of each person's salary & benefits plus 25% x hourly pay when hazardous.
Overtime Rate:	1.5 x employee salary over 40 hours/week
Per Diem Rate, if Food and Lodging are not Provided:	Actual Expense

12  
13

**LOUISIANA DEPARTMENT OF FORESTRY  
PERSONNEL  
Rates Updated 2012**

**NOTE: All Compact Personnel are guaranteed a Minimum of Eight Hours per Day**

Qualifications:	Two or Three Person Engine Unit
Standard Rate of Pay:	Actual Cost of each person's salary & benefits plus 25% x hourly pay when hazardous.
Overtime Rate:	1.5 x employee salary over 40 hours/week
Per Diem Rate, if Food and Lodging are not Provided:	Actual Expense

**LOUISIANA DEPARTMENT OF FORESTRY  
PERSONNEL  
Rates Updated 2012**

**NOTE: All Compact Personnel are guaranteed a Minimum of Eight Hours per Day**

Qualifications:	Truck / Vehicle Operator
Standard Rate of Pay:	Actual Cost of each person's salary & benefits plus 25% x hourly pay when hazardous.
Overtime Rate:	1.5 x employee salary over 40 hours/week
Per Diem Rate, if Food and Lodging are not Provided:	Actual Expense

**LOUISIANA DEPARTMENT OF FORESTRY  
PERSONNEL  
Rates Updated 2012**

**NOTE: All Compact Personnel are guaranteed a Minimum of Eight Hours per Day**

Qualifications:	20 Person Crew (NWCG qualified and pack tested).
Standard Rate of Pay:	Actual cost of employee's salary & benefits plus 25% x hourly pay when hazardous.
Overtime Rate:	1.5 x employee salary over 40 hours/week
Per Diem Rate, if Food and Lodging are not Provided:	Actual Expense

**LOUISIANA DEPARTMENT OF FORESTRY  
PERSONNEL  
Rates Updated 2012**

**NOTE: All Compact Personnel are guaranteed a Minimum of Eight Hours per Day**

Qualifications:	Pilot
Standard Rate of Pay:	Actual Cost of each person's salary & benefits
Overtime Rate:	1.5 x employee salary over 40 hours/week
Per Diem Rate, if Food and Lodging are not Provided:	Actual Expense

1  
2  
3  
4  
5  
6  
7

**MISSISSIPPI FORESTRY COMMISSION  
EQUIPMENT  
Rates Updated 2012**

**NOTE: Receiving States are responsible for repairing damaged equipment and, sending States are responsible for routine maintenance**

Type:	DOZER, TYPE II
Make:	CAT D5N LGP
Special Equipment: (LGP, Plow Type, Blade Type, With Foam, etc.)	BLADE & WINCH
Special Moving Requirements: (Oversized Load, etc)	OTR – TRACTOR/LOWBOY
Rates:	
Per Hour of Use w/Receiving State Supplying Fuel:	\$120/HR
Per Hour of Use w/Sending State Supplying Fuel:	
Per Mile w/Receiving State Supplying Fuel:	
Per Mile w/Sending State Supplying Fuel:	
Minimum Daily Charge Equipment:	
Transport Cost per Mile w/Receiving State supplying fuel:	\$480
Transport Cost per Mile w/Sending State Supplying Fuel:	\$5/MILE
Minimum Daily Charge for Transport: NOTE: List Operator Cost in Personnel Section.	

8  
9  
10  
11  
12

**MISSISSIPPI FORESTRY COMMISSION  
EQUIPMENT  
Rates Updated 2012**

Type:	TRACTOR/PLOW, TYPE IV
Make:	CAT D5G, D5K LGP
Special Equipment: (LGP, Plow Type, Blade Type, With Foam, etc.)	BLADE/PLOW
Special Moving Requirements: (Oversized Load, etc)	TANDEM TRANSPORT
Rates:	
Per Hour of Use w/Receiving State Supplying Fuel:	\$100/HR
Per Hour of Use w/Sending State Supplying Fuel:	
Per Mile w/Receiving State Supplying Fuel:	
Per Mile w/Sending State Supplying Fuel:	
Minimum Daily Charge Equipment:	

Transport Cost per Mile w/Receiving State supplying fuel:	\$400
Transport Cost per Mile w/Sending State Supplying Fuel:	\$3.50/MILE
Minimum Daily Charge for Transport: NOTE: List Operator Cost in Personnel Section.	

1  
2  
3  
4  
5

**MISSISSIPPI FORESTRY COMMISSION  
EQUIPMENT  
Rates Updated 2012**

Type:	TRACTOR/PLOW TYPE V
Make:	JD450G, 450H LGP
Special Equipment: (LGP, Plow Type, Blade Type, With Foam, etc.)	BLADE/PLOW
Special Moving Requirements: (Oversized Load, etc)	TANDEM TRANSPORT
Rates:	
Per Hour of Use w/Receiving State Supplying Fuel:	\$80/HR
Per Hour of Use w/Sending State Supplying Fuel:	
Per Mile w/Receiving State Supplying Fuel:	
Per Mile w/Sending State Supplying Fuel:	
Minimum Daily Charge Equipment:	
Transport Cost per Mile w/Receiving State supplying fuel:	\$320
Transport Cost per Mile w/Sending State Supplying Fuel:	\$3.50/MILE
Minimum Daily Charge for Transport:	
NOTE: List Operator Cost in Personnel Section.	

6  
7  
8  
9  
10

**MISSISSIPPI FORESTRY COMMISSION  
EQUIPMENT  
Rates Updated 2012**

Type:	ENGINE TYPE 6
Make:	FORD F-350
Special Equipment: (LGP, Plow Type, Blade Type, With Foam, etc.)	150 GALLON SLIP-ON UNIT
Special Moving Requirements: (Oversized Load, etc)	
Rates:	
Per Hour of Use w/Receiving State Supplying Fuel:	\$75/HR
Per Hour of Use w/Sending State Supplying Fuel:	

Per Mile w/Receiving State Supplying Fuel:	
Per Mile w/Sending State Supplying Fuel:	
Minimum Daily Charge Equipment:	
Transport Cost per Mile w/Receiving State supplying fuel:	
Transport Cost per Mile w/Sending State Supplying Fuel:	OTR \$1/MILE
Minimum Daily Charge for Transport: NOTE: List Operator Cost in Personnel Section.	

1  
2  
3  
4  
5

**MISSISSIPPI FORESTRY COMMISSION  
EQUIPMENT  
Rates Updated 2012**

Type:	Passenger Vehicle
Make:	Varies
Special Equipment: (LGP, Plow Type, Blade Type, With Foam, etc.)	Pickup truck, SUV, Van, Mechanic Truck
Special Moving Requirements: (Oversized Load, etc)	
Rates:	
Per Hour of Use w/Receiving State Supplying Fuel:	Mechanic Truck \$85/HR
Per Hour of Use w/Sending State Supplying Fuel:	
Per Mile w/Receiving State Supplying Fuel:	
Per Mile w/Sending State Supplying Fuel:	
Minimum Daily Charge Equipment:	\$.65/mile
Transport Cost per Mile w/Receiving State supplying fuel:	
Transport Cost per Mile w/Sending State Supplying Fuel:	Mechanic Truck \$1/Mile OTR
Minimum Daily Charge for Transport: NOTE: List Operator Cost in Personnel Section.	

6  
7

**MISSISSIPPI FORESTRY COMMISSION  
PERSONNEL  
Rates Updated 2012**

**NOTE: All Compact Personnel are guaranteed a Minimum of Eight Hours per Day**

Qualifications:	VARIABLES
Standard Rate of Pay:	ACTUAL HOURLY RATE PLUS FRINGE
Overtime Rate:	1.5 HOURLY OVER 40
Per Diem Rate, if Food and Lodging are not Provided:	SINGLE RESOURCES STATE PER DIEM RATES FOR MEAL PLUS ACTUAL LODGING COST. STRIKE TEAMS ACTUAL COST.

**NORTH CAROLINA FOREST SERVICE  
EQUIPMENT  
Rates Updated 2012**

**NOTE: Receiving States are responsible for repairing damaged equipment and, sending States are responsible for routine maintenance**

Type:	Tractor Plow Units												
Make:	Various												
Special Equipment: (LGP, Plow Type, Blade Type, With Foam, etc.)	N/A												
Special Moving Requirements: (Oversized Load, etc)	Requires Hauling Unit for road transport.												
Rates: Per Hour of Use w/Sending State Supplying Fuel:	<table> <tr><td>Type 1</td><td>\$94.33/hr</td></tr> <tr><td>Type 2</td><td>\$81.04/hr</td></tr> <tr><td>Type 3</td><td>\$71.75/hr</td></tr> <tr><td>Type 4</td><td>\$50.70/hr</td></tr> <tr><td>Firetrack</td><td>\$50.40/hr</td></tr> <tr><td>Nodwell Flextrack</td><td>\$81.04/hr</td></tr> </table>	Type 1	\$94.33/hr	Type 2	\$81.04/hr	Type 3	\$71.75/hr	Type 4	\$50.70/hr	Firetrack	\$50.40/hr	Nodwell Flextrack	\$81.04/hr
Type 1	\$94.33/hr												
Type 2	\$81.04/hr												
Type 3	\$71.75/hr												
Type 4	\$50.70/hr												
Firetrack	\$50.40/hr												
Nodwell Flextrack	\$81.04/hr												
Minimum Daily Charge Equipment:	<table> <tr><td>Type 1</td><td>\$565.98/day</td></tr> <tr><td>Type 2</td><td>\$486.24/day</td></tr> <tr><td>Type 3</td><td>\$427.50/day</td></tr> <tr><td>Type 4</td><td>\$304.20/day</td></tr> <tr><td>Firetrack</td><td>\$302.40/day</td></tr> <tr><td>Nodwell Flextrack</td><td>\$486.24/day</td></tr> </table>	Type 1	\$565.98/day	Type 2	\$486.24/day	Type 3	\$427.50/day	Type 4	\$304.20/day	Firetrack	\$302.40/day	Nodwell Flextrack	\$486.24/day
Type 1	\$565.98/day												
Type 2	\$486.24/day												
Type 3	\$427.50/day												
Type 4	\$304.20/day												
Firetrack	\$302.40/day												
Nodwell Flextrack	\$486.24/day												
NOTE: List Operator Cost in Personnel Section.	<p>Operator(s), Hauling Unit, and their per diem are not included in equipment rate. See Hauling Units for rate. See Personnel for operator rate.</p> <p>Tractor Plow Units will be charged the greater of the following:</p> <ol style="list-style-type: none"> <li>Actual hours used.</li> <li>Daily availability rate (equal to 6 hours).</li> </ol>												



1  
2  
3  
4

**NORTH CAROLINA FOREST SERVICE  
EQUIPMENT  
Rates Updated 2012**

Type:	Hauling Units
Make:	Various
Special Equipment: (LGP, Plow Type, Blade Type, With Foam, etc.)	N/A
Special Moving Requirements: (Oversized Load, etc)	N/A
Rates: Per Mile w/Sending State Supplying Fuel:	Truck Tractor and Trailer \$2.95/mile
Minimum Daily Charge Equipment:	\$295.00/day
NOTE: List Operator Cost in Personnel Section.	Operator(s) and their per diem are not included in equipment rate. See Personnel for operator rate. Hauling Units will be charged the greater of the following: 1. Actual mileage used. 2. Daily availability rate (equal to 100 miles).

5  
6  
7  
8  
9

**NORTH CAROLINA FOREST SERVICE  
EQUIPMENT  
Rates Updated 2012**

Type:	Trucks														
Make:	Various														
Special Equipment: (LGP, Plow Type, Blade Type, With Foam, etc.)	N/A														
Special Moving Requirements: (Oversized Load, etc)	N/A														
Rates: Per Mile w/Sending State Supplying Fuel:	<table> <tr><td>Bridge Truck</td><td>\$ .78/mile</td></tr> <tr><td>Dump Truck</td><td>\$2.25/mile</td></tr> <tr><td>Wrecker</td><td>\$2.25/mile</td></tr> <tr><td>Stake Body Truck</td><td>\$ .78/mile</td></tr> <tr><td>Fuel Truck</td><td>\$2.42/mile</td></tr> <tr><td>(Aviation or ground)</td><td></td></tr> <tr><td>Aviation Support Unit (Truck &amp;Trailer)</td><td>\$2.95/mile</td></tr> </table>	Bridge Truck	\$ .78/mile	Dump Truck	\$2.25/mile	Wrecker	\$2.25/mile	Stake Body Truck	\$ .78/mile	Fuel Truck	\$2.42/mile	(Aviation or ground)		Aviation Support Unit (Truck &Trailer)	\$2.95/mile
Bridge Truck	\$ .78/mile														
Dump Truck	\$2.25/mile														
Wrecker	\$2.25/mile														
Stake Body Truck	\$ .78/mile														
Fuel Truck	\$2.42/mile														
(Aviation or ground)															
Aviation Support Unit (Truck &Trailer)	\$2.95/mile														
Minimum Daily Charge Equipment:	<table> <tr><td>Bridge Truck</td><td>\$ 78.00/day</td></tr> <tr><td>Dump Truck</td><td>\$225.00/day</td></tr> <tr><td>Wrecker</td><td>\$225.00/day</td></tr> <tr><td>Stake Body Truck</td><td>\$ 78.00/day</td></tr> <tr><td>Fuel Truck</td><td>\$242.00/day</td></tr> <tr><td>(Aviation or ground)</td><td></td></tr> <tr><td>Aviation Support Unit (Truck &amp;Trailer)</td><td>\$295.00/day</td></tr> </table>	Bridge Truck	\$ 78.00/day	Dump Truck	\$225.00/day	Wrecker	\$225.00/day	Stake Body Truck	\$ 78.00/day	Fuel Truck	\$242.00/day	(Aviation or ground)		Aviation Support Unit (Truck &Trailer)	\$295.00/day
Bridge Truck	\$ 78.00/day														
Dump Truck	\$225.00/day														
Wrecker	\$225.00/day														
Stake Body Truck	\$ 78.00/day														
Fuel Truck	\$242.00/day														
(Aviation or ground)															
Aviation Support Unit (Truck &Trailer)	\$295.00/day														
NOTE: List Operator Cost in Personnel Section.	Operator(s) and their per diem are not included in equipment rate. See Personnel for operator rate.														

	Trucks will be charged the greater of the following: 1. Actual mileage used. 2. Daily availability rate (equal to 100 miles).
--	-------------------------------------------------------------------------------------------------------------------------------------

1  
2  
3  
4  
5

**NORTH CAROLINA FOREST SERVICE  
EQUIPMENT  
Rates Updated 2012**

Type:	Passenger Vehicles												
Make:	Various												
Special Equipment: (LGP, Plow Type, Blade Type, With Foam, etc.)	N/A												
Special Moving Requirements: (Oversized Load, etc)	N/A												
Rates: Per Mile w/Sending State Supplying Fuel:	<table> <tr><td>Sedan:</td><td>\$ .34/mile</td></tr> <tr><td>Pick Up Truck:</td><td>\$ .42/mile</td></tr> <tr><td>Passenger Van (mini):</td><td>\$ .34/mile</td></tr> <tr><td>Radio Engineers Vehicles (All)</td><td>\$ .73/mile</td></tr> <tr><td>Suburban (4x4):</td><td>\$ .47/mile</td></tr> <tr><td>Mechanics Truck:</td><td>\$ .95/mile</td></tr> </table>	Sedan:	\$ .34/mile	Pick Up Truck:	\$ .42/mile	Passenger Van (mini):	\$ .34/mile	Radio Engineers Vehicles (All)	\$ .73/mile	Suburban (4x4):	\$ .47/mile	Mechanics Truck:	\$ .95/mile
Sedan:	\$ .34/mile												
Pick Up Truck:	\$ .42/mile												
Passenger Van (mini):	\$ .34/mile												
Radio Engineers Vehicles (All)	\$ .73/mile												
Suburban (4x4):	\$ .47/mile												
Mechanics Truck:	\$ .95/mile												
Minimum Daily Charge Equipment:	<table> <tr><td>Sedan:</td><td>\$34.00/day</td></tr> <tr><td>Pick Up Truck:</td><td>\$42.00/day</td></tr> <tr><td>Passenger Van (mini):</td><td>\$34.00/day</td></tr> <tr><td>Radio Engineers Vehicle (all):</td><td>\$73.00/day</td></tr> <tr><td>Suburban (4x4):</td><td>\$47.00/day</td></tr> <tr><td>Mechanics Truck:</td><td>\$95.00/day</td></tr> </table>	Sedan:	\$34.00/day	Pick Up Truck:	\$42.00/day	Passenger Van (mini):	\$34.00/day	Radio Engineers Vehicle (all):	\$73.00/day	Suburban (4x4):	\$47.00/day	Mechanics Truck:	\$95.00/day
Sedan:	\$34.00/day												
Pick Up Truck:	\$42.00/day												
Passenger Van (mini):	\$34.00/day												
Radio Engineers Vehicle (all):	\$73.00/day												
Suburban (4x4):	\$47.00/day												
Mechanics Truck:	\$95.00/day												
NOTE: List Operator Cost in Personnel Section.	<p>Operator(s) and their per diem are not included in equipment rate. See Personnel for operator rate. Passenger vehicles will be charged the greater of the following:</p> <ol style="list-style-type: none"> <li>1. Actual mileage used.</li> <li>2. Daily availability rate (equal to 100 miles).</li> </ol>												

6  
7  
8  
9  
10

**NORTH CAROLINA FOREST SERVICE  
EQUIPMENT  
Rates Updated 2012**

Type:	Engines
Make:	Type 6 or Type 7
Special Equipment: (LGP, Plow Type, Blade Type, With Foam, etc.)	N/A
Special Moving Requirements: (Oversized Load, etc)	N/A
Rates: Per Mile w/Sending State Supplying Fuel:	\$ .83/per mile
Minimum Daily Charge Equipment:	\$83.00 per day

NOTE: List Operator Cost in Personnel Section.	Operator(s), foam, and their per diem are not included in equipment rate. See Personnel for operator rate. See Supply for foam rate Engines will be charged the greater of the following: 1. Actual mileage used. 2. Daily availability rate (equal to 100 miles).
------------------------------------------------	-----------------------------------------------------------------------------------------------------------------------------------------------------------------------------------------------------------------------------------------------------------------------------

1  
2  
3  
4  
5

**NORTH CAROLINA FOREST SERVICE  
EQUIPMENT  
Rates Updated 2012**

Type:	Water Tenders
Make:	Type 1, 2 or 3
Special Equipment: (LGP, Plow Type, Blade Type, With Foam, etc.)	N/A
Special Moving Requirements: (Oversized Load, etc)	N/A
Rates: Per Mile w/Sending State Supplying Fuel:	\$2.42/mile
Minimum Daily Charge Equipment:	\$242.00/day
NOTE: List Operator Cost in Personnel Section.	Operator(s) and their per diem are not included in equipment rate. See Personnel for operator rate. Water Tenders will be charged the greater of the following: 1. Actual mileage used. 2. Daily availability rate (equal to 100 miles).

6  
7  
8  
9  
10

**NORTH CAROLINA FOREST SERVICE  
EQUIPMENT  
Rates Updated 2012**

Type:	Portable Pumps
Make:	Various
Special Equipment: (LGP, Plow Type, Blade Type, With Foam, etc.)	Hose and appliances included.
Special Moving Requirements: (Oversized Load, etc)	Requires Vehicle to transport unit to site.
Rates: Per Hour of Use w/Sending State Supplying Fuel:	1" to 4" Diameter Discharge \$8.32/hr
Minimum Daily Charge Equipment:	\$49.92/day
Transport Cost per Mile w/Sending State Supplying Fuel:	Cost of transport is dependent on the type of vehicle used.
NOTE: List Operator Cost in Personnel Section.	Operator(s) and their per diem are not included in equipment rate. See Personnel for operator rate. See Vehicle for rate. Portable Pumps will be charged the greater of the

	following: 1. Actual hours used. 2. Daily availability rate (equal to 6 hours).
--	---------------------------------------------------------------------------------------

1  
2  
3  
4  
5

**NORTH CAROLINA FOREST SERVICE  
EQUIPMENT  
Rates Updated 2012**

Type:	Self Contained Pumps								
Make:	Various								
Special Equipment: (LGP, Plow Type, Blade Type, With Foam, etc.)	Includes irrigation system.								
Special Moving Requirements: (Oversized Load, etc)	Requires Vehicle to transport unit to site.								
Rates: Per Hour of Use w/Sending State Supplying Fuel:  Minimum Daily Charge Equipment:  Transport Cost per Mile w/Sending State Supplying Fuel:  NOTE: List Operator Cost in Personnel Section.	<table> <tr> <td>6" Discharge</td> <td>\$21.12/hr</td> </tr> <tr> <td>Volume Lift (self-contained)</td> <td>\$44.66/hr</td> </tr> <tr> <td>6" Discharge</td> <td>\$126.72/day</td> </tr> <tr> <td>Volume Lift</td> <td>\$267.96/day</td> </tr> </table> <p>self-contained</p> <p>Cost of transport is dependent on the type of vehicle used.</p> <p>Operator(s) and their per diem are not included in equipment rate. See Personnel for operator rate. Self Contained Pumps will be charged the greater of the following: 1. Actual hours used. 2. Daily availability rate (equal to 6 hours).</p>	6" Discharge	\$21.12/hr	Volume Lift (self-contained)	\$44.66/hr	6" Discharge	\$126.72/day	Volume Lift	\$267.96/day
6" Discharge	\$21.12/hr								
Volume Lift (self-contained)	\$44.66/hr								
6" Discharge	\$126.72/day								
Volume Lift	\$267.96/day								

6  
7  
8  
9  
10

**NORTH CAROLINA FOREST SERVICE  
EQUIPMENT  
Rates Updated 2012**

Type:	Volume Lift Pumps				
Make:	Various				
Special Equipment: (LGP, Plow Type, Blade Type, With Foam, etc.)	N/A				
Special Moving Requirements: (Oversized Load, etc)	Requires Vehicle to transport unit(s) to site.				
Rates: Per Hour of Use w/Sending State Supplying Fuel:  Minimum Daily Charge Equipment:  Transport Cost per Mile w/Sending State Supplying Fuel:  NOTE: List Operator Cost in Personnel Section.	<table> <tr> <td>All Discharge Sizes</td> <td>\$3.97/hr</td> </tr> <tr> <td>All Discharge Sizes</td> <td>\$23.82/day</td> </tr> </table> <p>Cost of transport is dependent on the type of vehicle used.</p> <p>Operator(s) and their per diem are not included in equipment rate. See Personnel for operator rate. Volume Lift Pumps will be charged the greater of</p>	All Discharge Sizes	\$3.97/hr	All Discharge Sizes	\$23.82/day
All Discharge Sizes	\$3.97/hr				
All Discharge Sizes	\$23.82/day				

	the following: 1. Actual hours used. 2. Daily availability rate (equal to 6 hours).
--	-------------------------------------------------------------------------------------------

1  
2  
3  
4  
5

**NORTH CAROLINA FOREST SERVICE  
EQUIPMENT  
Rates Updated 2012**

Type:	Wheeled Tractors
Make:	Various
Special Equipment: (LGP, Plow Type, Blade Type, With Foam, etc.)	N/A
Special Moving Requirements: (Oversized Load, etc)	N/A
Rates: Per Hour of Use w/Sending State Supplying Fuel:	All sizes \$21.10/hr
Minimum Daily Charge Equipment:	\$126.60/day
NOTE: List Operator Cost in Personnel Section.	Operator(s) and their per diem are not included in equipment rate. See Personnel for operator rate. Wheeled Tractors will be charged the greater of the following: 1. Actual hours used. 2. Daily availability rate (equal to 6 hours).

6  
7  
8  
9  
10

**NORTH CAROLINA FOREST SERVICE  
EQUIPMENT  
Rates Updated 2012**

Type:	Motor Graders
Make:	Various
Special Equipment: (LGP, Plow Type, Blade Type, With Foam, etc.)	N/A
Special Moving Requirements: (Oversized Load, etc)	Requires Hauling Unit for road transport.
Rates: Per Hour of Use w/Sending State Supplying Fuel:	\$21.10/mile
Minimum Daily Charge Equipment:	\$126.60/day
NOTE: List Operator Cost in Personnel Section.	Operator(s), Hauling Unit, and their per diem are not included in equipment rate. See Hauling Units for rate. See Personnel for operator rate. Motor Graders will be charged the greater of the following: 1. Actual hours used. 2. Daily availability rate (equal to 6 hours).

11  
12

1  
2  
3  
4

**NORTH CAROLINA FOREST SERVICE  
EQUIPMENT  
Rates Updated 2012**

Type:	Incident Support Trailers
Make:	Various
Special Equipment: (LGP, Plow Type, Blade Type, With Foam, etc.)	N/A
Special Moving Requirements: (Oversized Load, etc)	Requires Vehicle to transport unit(s) to site.
Rates: Daily Charge Equipment:	\$214.24/day
Transport Cost per Mile w/Sending State Supplying Fuel:	Cost of transport is dependent on the type of vehicle used. See Vehicle rates.

5  
6  
7  
8  
9

**NORTH CAROLINA FOREST SERVICE  
EQUIPMENT  
Rates Updated 2012**

Type:	All Terrain Forklifts
Make:	Various
Special Equipment: (LGP, Plow Type, Blade Type, With Foam, etc.)	N/A
Special Moving Requirements: (Oversized Load, etc)	Requires Hauling Unit for road transport.
Rates: Per Hour of Use w/Sending State Supplying Fuel:	\$13.69/hour
Minimum Daily Charge Equipment:	\$82.14/day
NOTE: List Operator Cost in Personnel Section.	Operator(s), Hauling Unit, and their per diem are not included in equipment rate. See Hauling Units for rate. See Personnel for operator rate. All Terrain Forklifts will be charged the greater of the following: 1. Actual hours used. 2. Daily availability rate (equal to 6 hours).

10  
11  
12  
13  
14

**NORTH CAROLINA FOREST SERVICE  
EQUIPMENT  
Rates Updated 2012**

Type:	Miscellaneous Equipment
Make:	Various
Special Equipment: (LGP, Plow Type, Blade Type, With Foam, etc.)	N/A
Special Moving Requirements: (Oversized Load, etc)	Requires Vehicle or Hauling Unit to transport to site.

15

Rates:											
Per Hour of Use w/Sending State Supplying Fuel:	<table> <tr> <td>Generators &lt;25KW</td> <td>\$7.47/hr</td> </tr> <tr> <td>Generators &gt;26KW</td> <td>\$12.41/hr</td> </tr> <tr> <td>Portable Air Compressor</td> <td>\$3.55/hr</td> </tr> <tr> <td>Boats (All Sizes)</td> <td>\$30.94/hr</td> </tr> <tr> <td>ATV (All Sizes)</td> <td>\$9.92/hr</td> </tr> </table>	Generators <25KW	\$7.47/hr	Generators >26KW	\$12.41/hr	Portable Air Compressor	\$3.55/hr	Boats (All Sizes)	\$30.94/hr	ATV (All Sizes)	\$9.92/hr
Generators <25KW	\$7.47/hr										
Generators >26KW	\$12.41/hr										
Portable Air Compressor	\$3.55/hr										
Boats (All Sizes)	\$30.94/hr										
ATV (All Sizes)	\$9.92/hr										
Minimum Daily Charge Equipment:	Miscellaneous Equipment will be charged the greater of the following: <ol style="list-style-type: none"> <li>1. Actual hours used.</li> <li>2. Daily availability rate (equal to 6 hours).</li> </ol>										
Transport Cost per Mile w/Sending State Supplying Fuel:	Cost of transport is dependent on the type of Vehicle or Hauling Unit used. See Vehicle or Hauling Unit for rate.										

1  
2  
3  
4  
5

**NORTH CAROLINA FOREST SERVICE  
EQUIPMENT  
Rates Updated 2012**

Type:	Portable Bridges
Make:	Various
Special Equipment: (LGP, Plow Type, Blade Type, With Foam, etc.)	N/A
Special Moving Requirements: (Oversized Load, etc)	Requires Truck Tractor to transport to site.
Rates:	
Daily Charge Equipment:	\$107.12/day
Transport Cost per Mile w/Sending State Supplying Fuel:	\$2.95/mile
Minimum Daily Charge for Transport:	\$295.00/day
NOTE: List Operator Cost in Personnel Section.	Operator(s) and their per diem are not included in equipment rate. See Personnel for operator rate. Truck Tractor will be charged the greater of the following: <ol style="list-style-type: none"> <li>1. Actual mileage used.</li> <li>2. Daily availability rate (equal to 100 miles).</li> </ol>

6  
7

1  
2  
3  
4

**NORTH CAROLINA FOREST SERVICE  
AIRCRAFT  
Rates Updated 2012**

Type:	Fixed Wing Aircraft
Make:	Cessna
Model:	185 Trans/Utility
Special Equipment:	N/A
Passenger Capacity (exclude pilot):	3
Load Capacity or Retardant Gallons:	N/A
Rate: Per Hour of Use w/Sending State Supplying Fuel:	\$199.00/hr
Minimum Daily Charge:	\$398.00/day
NOTE: List Operator Cost in Personnel Section.	<p>Pilot(s), crewmember(s), mechanic(s), or support equipment (if applicable), and their per diem is not included in equipment rate. See Personnel for pilot, mechanic, and crewmember rate.</p> <p>Aircraft will be charged the greater of the following:</p> <ol style="list-style-type: none"> <li>1. Actual hours used.</li> <li>2. Daily availability rate (equal to 2 hours).</li> </ol>

5  
6  
7  
8  
9

**NORTH CAROLINA FOREST SERVICE  
AIRCRAFT  
Rates Updated 2012**

Type:	Fixed Wing Aircraft
Make:	Cessna
Model:	182 Trans/Utility
Special Equipment:	N/A
Passenger Capacity (exclude pilot):	3
Load Capacity or Retardant Gallons:	N/A
Rate: Per Hour of Use w/Sending State Supplying Fuel:	\$213.00/hr
Minimum Daily Charge:	\$426.00/day
NOTE: List Operator Cost in Personnel Section.	<p>Pilot(s), crewmember(s), mechanic(s), or support equipment (if applicable), and their per diem is not included in equipment rate. See Personnel for pilot, mechanic, and crewmember rate.</p> <p>Aircraft will be charged the greater of the following:</p> <ol style="list-style-type: none"> <li>1. Actual hours used.</li> <li>2. Daily availability rate (equal to 2 hours).</li> </ol>

10  
11



1  
2  
3  
4

**NORTH CAROLINA FOREST SERVICE  
AIRCRAFT  
Rates Updated 2012**

Type:	Fixed Wing Aircraft
Make:	Beechcraft
Model:	T-34B
Special Equipment:	N/A
Passenger Capacity (exclude pilot):	1
Load Capacity or Retardant Gallons:	N/A
Rate:	
Per Hour of Use w/Sending State Supplying Fuel:	\$225.00/hr
Minimum Daily Charge:	\$450.00/day
NOTE: List Operator Cost in Personnel Section.	Pilot(s), crewmember(s), mechanic(s), or support equipment (if applicable), and their per diem is not included in equipment rate. See Personnel for pilot, mechanic, and crewmember rate.
	Aircraft will be charged the greater of the following: 1. Actual hours used. 2. Daily availability rate (equal to 2 hours).

5  
6  
7  
8  
9

**NORTH CAROLINA FOREST SERVICE  
AIRCRAFT  
Rates Updated 2012**

Type:	Single Engine Air Tankers (SEATs)
Make:	Dromader
Model:	M-18
Special Equipment:	N/A
Passenger Capacity (exclude pilot):	None
Load Capacity or Retardant Gallons:	500 Gallons
Rate:	\$640.00/hr
Per Hour of Use w/Receiving State Supplying Fuel:	\$1280.00/day
Per Hour of Use w/Sending State Supplying Fuel:	
Minimum Daily Charge:	Pilot(s), crewmember(s), mechanic(s), or support equipment (if applicable), foam or retardant (if applicable) and their per diem is not included in equipment rate. See Personnel for pilot, mechanic, and crewmember rate. See Supply for foam and retardant rate.
NOTE: List Operator Cost in Personnel Section:	
	Aircraft will be charged the greater of the following: 1. Actual hours used. 2. Daily availability rate (equal to 2 hours).

10  
11

1  
2  
3  
4

**NORTH CAROLINA FOREST SERVICE  
AIRCRAFT  
Rates Updated 2012**

Type:	Rotor Wing Aircraft
Make:	Bell
Model:	UH-1H
Special Equipment:	Bambi Bucket, Aerial Ignition Device Machine
Passenger Capacity (exclude pilot):	8
Load Capacity or Retardant Gallons:	240 Gallons
Rate: Per Hour of Use w/Sending State Supplying Fuel:	\$1430.00/hr
Minimum Daily Charge:	\$2860.00/day
NOTE: List Operator Cost in Personnel Section.	<p>Pilot(s), crewmember(s), mechanic(s), support equipment (if applicable), foam (if applicable), and their per diem is not included in equipment rate. See Personnel for pilot, mechanic, and crewmember rate.</p> <p>Aircraft will be charged the greater of the following:</p> <ol style="list-style-type: none"> <li>1. Actual hours used.</li> <li>2. Daily availability rate (equal to 2 hours).</li> </ol>

5  
6  
7  
8  
9

**NORTH CAROLINA FOREST SERVICE  
AIRCRAFT  
Rates Updated 2012**



Type:	Rotor Wing Aircraft
Make:	American Eurocopter
Model:	AS350-B3
Special Equipment:	Bambi Bucket, Aerial Ignition Device Machine
Passenger Capacity (exclude pilot):	4
Load Capacity or Retardant Gallons:	240 Gallons
Rate: Per Hour of Use w/Sending State Supplying Fuel:	\$603.00/hr
Minimum Daily Charge:	\$1206.00/day
NOTE: List Operator Cost in Personnel Section.	<p>Pilot(s), crewmember(s), mechanic(s), support equipment (if applicable), foam (if applicable), and their per diem is not included in equipment rate. See Personnel for pilot, mechanic, and crewmember rate.</p> <p>Aircraft will be charged the greater of the following:</p> <ol style="list-style-type: none"> <li>1. Actual hours used.</li> <li>2. Daily availability rate (equal to 2 hours).</li> </ol>

10  
11

**NORTH CAROLINA FOREST SERVICE  
PERSONNEL  
Rates Updated 2012**

**NOTE: All Compact Personnel are guaranteed a Minimum of Eight Hours per Day**

Qualifications:	Three (3) Type 2 (Compact Type 1) Incident Management Teams (Wildfire & All-Hazard).  Three (3) Type 2 IA hand crews.  Additional Type 3 Incident Management Teams, hand crews and specialist/overhead personnel available.
Standard Rate of Pay:	Salary and Benefits – Varies by individual.
Overtime Rate:	1.5 x Base pay for hours worked over 40-hour workweek.
Per Diem Rate, if Food and Lodging are not Provided:	Support provided by host agency or current North Carolina out of state per diem rate will apply.



		North Carolina Division of Forest Resources		
2012 Equipment Rate Schedule				
	Rate per	Guarantee Min. Per Shift	ISUITE	
VEHICLE	MILE	(For out-of-state use only)	KIND CODE	
Sedan	\$ 0.34	\$ 34.00	SED	
Suburban	\$ 0.47	\$ 47.00	SUB	
Van	\$ 0.34	\$ 34.00	VAN	
Pick Up Trucks	\$ 0.42	\$ 42.00	PU	
Type 6 & 7 Engines/Slip on Units	\$ 0.83	\$ 83.00	ENG 7	
Mechanics Trucks (all)	\$ 0.95	\$ 95.00	MECT	
Radio Engineer Vehicles (all)	\$ 0.73	\$ 73.00	RADV	
<b>TENDER</b>				
	<b>MILE</b>			
Water Type1/2/3	\$ 2.42	\$ 242.00	WAT	
Fuel Truck (Aviation or Ground)	\$ 2.42	\$ 242.00	FT	
<b>TRUCKS</b>				
	<b>MILE</b>			
Stake Body Truck	\$ 0.78	\$ 78.00	STK	
Dump Truck	\$ 2.25	\$ 225.00	DPT	
Wrecker	\$ 2.25	\$ 225.00	WRKR	
Bridge Truck	\$ 0.78	\$ 78.00	BDT	
Aviation Support Unit (Truck & Trailer)	\$ 2.95	\$ 295.00	AVSU	
<b>HAULING UNITS</b>				
	<b>MILE</b>			
Truck Tractor and Trailer	\$ 2.95	\$ 295.00	LOWB	

<b>EQUIPMENT</b>			
<b>TRACTOR PLOW</b>	<b>HOUR</b>		
Type I	\$ 94.33	\$ 565.98	TPL1
Type II	\$ 81.04	\$ 486.24	TPL2
Type III	\$ 71.25	\$ 427.50	TPL3
Type IV	\$ 50.70	\$ 304.20	TPL4
Fire Track	\$ 50.40	\$ 302.40	FIRT
Nodwell/Flex Track	\$ 81.04	\$ 486.24	FLXT
<b>PORTABLE PUMPS</b>			
<b>Hose &amp; Appliances Included</b>	<b>HOUR</b>		
1" to 4" Diameter Discharge	\$ 8.32	\$ 49.92	PP1
<b>VOLUME LIFT PUMPS</b>	<b>HOUR</b>		
All Discharge Sizes	\$ 3.97	\$ 23.82	PP4
<b>SELF CONTAINED PUMPS</b>			
<b>Includes Irrigation System</b>	<b>HOUR</b>		
6" Discharge (irrigation system)	\$ 21.12	\$ 126.72	PP2
Self Contained Volume Lift	\$ 44.66	\$ 267.96	PP3
<b>WHEELED TRACTOR</b>	<b>HOUR</b>		
All Sizes	\$ 21.10	\$ 126.60	FRMT
<b>MOTOR GRADER</b>	<b>HOUR</b>		
Grader	\$ 21.10	\$ 126.60	GRD
<b>FORK LIFT</b>	<b>HOUR</b>		
All Terrain	\$ 13.69	\$ 82.14	FORK

Revised January 2012

Page 1 of 2

1

		<b>North Carolina Division of Forest Resources 2011 Equipment Rate Schedule</b>		
	<b>Rate per</b>	<b>Guarantee Min. Per Shift (For out-of-state use only)</b>	<b>ISUITE KIND CODE</b>	
<b>PORTABLE BRIDGES</b>				
	<b>DAY</b>			
All Lengths	\$ 107.12	\$ 107.12	PTBD	
<b>AIR COMPRESSOR</b>				
	<b>HOUR</b>			
Portable	\$ 3.55	\$ 21.30	ARCP	
<b>GENERATORS</b>				
	<b>HOUR</b>			
25 KW and Below	\$ 7.47	\$ 44.82	GEN1	
26 KW and above	\$ 12.41	\$ 74.46	GEN2	
<b>BOATS</b>				
	<b>HOUR</b>			
All Lengths and Motor Sizes	\$ 30.94	\$ 185.64	BOAT	
<b>ATV</b>				
	<b>HOUR</b>			
All Sizes (4 and 2 wheeled Drive)	\$ 9.92	\$ 59.52	ATV	
<b>Incident Team Support Equipment</b>				
<b>(Office Trailers)</b>				
	<b>DAY</b>			
All incident support trailers	\$ 214.24	\$ 214.24	FAC	
<b>AIRCRAFT (Airtanker)</b>				
	<b>Flight Hour</b>	<b>Guarantee</b>		
M-18 SEAT (Type IV)	\$ 640.00	\$ 1,280.00	AT2	
B-2 Snow (Type IV)	\$ 320.00	\$ 640.00	AT3	
<b>AIRCRAFT (Fixed Wing)</b>				
Cessna 182 Trans/Utility	\$ 213.00	\$ 426.00	AA3	
Cessna 185 Trans/Utility	\$ 199.00	\$ 398.00	AA4	
Cessna 172 Patrol/Scout	\$ 120.00	\$ 296.00	AA6	
Cessna 206 Utility	\$ 225.00	\$ 450.00	AA7	
T-34 LEAD	\$ 225.00	\$ 450.00	LP1	
<b>AIRCRAFT (Helicopter)</b>				
UH-1H IA	\$ 1,430.00	\$ 2,860.00	HEL2	
AS350-B3 Trans IA Bucket	\$ 603.00	\$ 1,206.00	HEL3	

Revised January 2012

Page 2 of 2

1  
2  
3  
4  
5

**OKLAHOMA DIVISION OF FORESTRY  
EQUIPMENT  
Rates Updated 2012**

**NOTE: Receiving States are responsible for repairing damaged equipment and, sending States are responsible for routine maintenance**

Type:	<b>Medium Dozer (2 available)</b>
Make:	John Deere 750 C
Special Equipment: (LGP, Plow Type, Blade Type, With Foam, etc.)	Low Ground Pressure (LGP)
Special Moving Requirements: (Oversized Load, etc)	5 Ton Tractor/Trailer Oversize Load
Rates:	
Per Hour of Use w/Receiving State Supplying Fuel:	N/A (If receiving state supplies fuel, cost will be deducted from invoice)
Per Hour of Use w/Sending State Supplying Fuel:	\$125/hour
Per Mile w/Receiving State Supplying Fuel:	N/A
Per Mile w/Sending State Supplying Fuel:	N/A
Minimum Daily Charge Equipment:	3 hours per day N/A (If receiving state supplies fuel, cost will be deducted from invoice)
Transport Cost per Mile w/Receiving State supplying fuel:	
Transport Cost per Mile w/Sending State Supplying Fuel:	\$2.00/mile
Minimum Daily Charge for Transport: NOTE: List Operator Cost in Personnel Section.	3 hours per day @ \$50/hour

**OKLAHOMA DIVISION OF FORESTRY  
EQUIPMENT  
Rates Updated 2012**

Type:	<b>Light Dozer ( 7 available)</b>
Make:	John Deere 650 H & J models
Special Equipment: (LGP, Plow Type, Blade Type, With Foam, etc.)	
Special Moving Requirements: (Oversized Load, etc)	5T Tractor/Trailer Oversize Load
Rates:	
Per Hour of Use w/Receiving State Supplying Fuel:	N/A (If receiving state supplies fuel, cost will be deducted from invoice)
Per Hour of Use w/Sending State Supplying Fuel:	\$100/hour
Per Mile w/Receiving State Supplying Fuel:	
Per Mile w/Sending State Supplying Fuel:	N/A
Minimum Daily Charge Equipment:	N/A

Transport Cost per Mile w/Receiving State supplying fuel:	3 hours per day  N/A (If receiving state supplies fuel, cost will be deducted from invoice)
Transport Cost per Mile w/Sending State Supplying Fuel:	
Minimum Daily Charge for Transport:	\$2.00/mile
NOTE: List Operator Cost in Personnel Section.	3 hours per day @ \$50/hour

1  
2  
3  
4  
5

**OKLAHOMA DIVISION OF FORESTRY  
EQUIPMENT  
Rates Updated 2012**

Type:	<b>Light Dozer (29 available)</b>
Make:	John Deere 450 G, H & J Models
Special Equipment: (LGP, Plow Type, Blade Type, With Foam, etc.)	
Special Moving Requirements: (Oversized Load, etc)	
Rates:	
Per Hour of Use w/Receiving State Supplying Fuel:	N/A (If receiving state supplies fuel, cost will be deducted from invoice)
Per Hour of Use w/Sending State Supplying Fuel:	\$80/hour
Per Mile w/Receiving State Supplying Fuel:	
Per Mile w/Sending State Supplying Fuel:	N/A
Minimum Daily Charge Equipment:	N/A
Transport Cost per Mile w/Receiving State supplying fuel:	3 hours per day  N/A (If receiving state supplies fuel, cost will be deducted from invoice)
Transport Cost per Mile w/Sending State Supplying Fuel:	
Minimum Daily Charge for Transport:	\$2.00/mile
NOTE: List Operator Cost in Personnel Section.	3 hours per day @ \$40/hour

6  
7  
8  
9  
10  
11  
12  
13  
14

1  
2  
3  
4

**OKLAHOMA DIVISION OF FORESTRY  
EQUIPMENT  
Rates Updated 2012**

Type:	<b>Type 6 Engine (30 available)</b>
Make:	Various makes
Special Equipment: (LGP, Plow Type, Blade Type, With Foam, etc.)	4X4 Foam capable (receiving State supplying foam concentrate)
Special Moving Requirements: (Oversized Load, etc)	
Rates:	
Per Hour of Use w/Receiving State Supplying Fuel:	N/A (If receiving state supplies fuel, cost will be deducted from invoice)
Per Hour of Use w/Sending State Supplying Fuel:	\$60/hour
Per Mile w/Receiving State Supplying Fuel:	
Per Mile w/Sending State Supplying Fuel:	N/A (If receiving state supplies fuel, cost will be deducted from invoice)
Minimum Daily Charge Equipment:	
Transport Cost per Mile w/Receiving State supplying fuel:	8 hour per day
Transport Cost per Mile w/Sending State Supplying Fuel:	
Minimum Daily Charge for Transport: NOTE: List Operator Cost in Personnel Section.	

5  
6  
7  
8  
9

**OKLAHOMA DIVISION OF FORESTRY  
EQUIPMENT  
Rates Updated 2012**

Type:	<b>Pickup (2X4 &amp; 4X4) and Sport Utility Vehicles</b>
Make:	Various
Special Equipment: (LGP, Plow Type, Blade Type, With Foam, etc.)	
Special Moving Requirements: (Oversized Load, etc)	
Rates:	
Per Hour of Use w/Receiving State Supplying Fuel:	
Per Hour of Use w/Sending State Supplying Fuel:	
Per Mile w/Receiving State Supplying Fuel:	
Per Mile w/Sending State Supplying Fuel:	
Minimum Daily Charge Equipment:	Current Federal Mileage Rate applies
Transport Cost per Mile w/Receiving State supplying fuel:	75 mile per day minimum charge



Transport Cost per Mile w/Sending State Supplying Fuel:  Minimum Daily Charge for Transport: NOTE: List Operator Cost in Personnel Section.	
------------------------------------------------------------------------------------------------------------------------------------------------------	--

1  
2  
3  
4  
5

**OKLAHOMA DIVISION OF FORESTRY  
EQUIPMENT  
Rates Updated 2012**

Type:	<b>Sedans</b>
Make:	Various Makes & Models
Special Equipment: (LGP, Plow Type, Blade Type, With Foam, etc.)	
Special Moving Requirements: (Oversized Load, etc)	
Rates:	
Per Hour of Use w/Receiving State Supplying Fuel:	
Per Hour of Use w/Sending State Supplying Fuel:	
Per Mile w/Receiving State Supplying Fuel:	
Per Mile w/Sending State Supplying Fuel:	
Minimum Daily Charge Equipment:	Current Federal Mileage rate applies
Transport Cost per Mile w/Receiving State supplying fuel:	75 miles per day minimum charge
Transport Cost per Mile w/Sending State Supplying Fuel:	
Minimum Daily Charge for Transport:	
NOTE: List Operator Cost in Personnel Section.	

6  
7

**OKLAHOMA DIVISION OF FORESTRY  
EQUIPMENT  
Rates Updated 2012**

Type:	<b>Helicopter Buckets</b>
Make:	SEI Industries – Bambi
Special Equipment: (LGP, Plow Type, Blade Type, With Foam, etc.)	660 Gallon Capacity (4 available) 1,320 Gallon Capacity (3 available)
Special Moving Requirements: (Oversized Load, etc)	Receiving State pays shipping costs (Buckets in custody of National Guard – two day minimum delay to ship)
Rates: Per Hour of Use w/Receiving State Supplying Fuel:  Per Hour of Use w/Sending State Supplying Fuel:  Per Mile w/Receiving State Supplying Fuel:  Per Mile w/Sending State Supplying Fuel:  Minimum Daily Charge Equipment:  Transport Cost per Mile w/Receiving State supplying fuel:  Transport Cost per Mile w/Sending State Supplying Fuel:  Minimum Daily Charge for Transport: NOTE: List Operator Cost in Personnel Section.	\$100/day flat charge + receiving state pays for repairs or replacement if necessary.

**OKLAHOMA DIVISION OF FORESTRY  
PERSONNEL  
Rates Updated 2012**

**NOTE: All Compact Personnel are guaranteed a Minimum of Eight Hours per Day**

Qualifications:	<b>Single Resource Bosses (35)</b>
Standard Rate of Pay:	Salary & Benefits – Varies by Individual
Overtime Rate:	Employee's standard overtime rates apply*
Per Diem Rate, if Food and Lodging are not Provided:	Federal Rates Apply

**OKLAHOMA DIVISION OF FORESTRY  
PERSONNEL  
Rates Updated 2012**

**NOTE: All Compact Personnel are guaranteed a Minimum of Eight Hours per Day**

Qualifications:	<b>Strike Team/Task Force Leaders (10)</b>
Standard Rate of Pay:	Salary & Benefits – Varies by Individual
Overtime Rate:	Employee's standard overtime rates apply*
Per Diem Rate, if Food and Lodging are not Provided:	Federal Rates Apply

**OKLAHOMA DIVISION OF FORESTRY  
PERSONNEL  
Rates Updated 2012**

**NOTE: All Compact Personnel are guaranteed a Minimum of Eight Hours per Day**

Qualifications:	<b>Division Group Supervisors (3)</b>
Standard Rate of Pay:	Salary & Benefits – Varies by Individual
Overtime Rate:	Employee’s standard overtime rates apply*
Per Diem Rate, if Food and Lodging are not Provided:	Federal Rates Apply

**OKLAHOMA DIVISION OF FORESTRY  
PERSONNEL  
Rates Updated 2012**

**NOTE: All Compact Personnel are guaranteed a Minimum of Eight Hours per Day**

Qualifications:	<b>Type 2 Operations Section Chief (1)</b>
Standard Rate of Pay:	Salary & Benefits – Varies by Individual
Overtime Rate:	Employee’s standard overtime rates apply*
Per Diem Rate, if Food and Lodging are not Provided:	Federal Rates Apply

**OKLAHOMA DIVISION OF FORESTRY  
PERSONNEL  
Rates Updated 2012**

**NOTE: All Compact Personnel are guaranteed a Minimum of Eight Hours per Day**

Qualifications:	<b>Type 1 Operations Section Chief (1)</b>
Standard Rate of Pay:	Salary & Benefits – Varies by Individual
Overtime Rate:	Employee’s standard overtime rates apply*
Per Diem Rate, if Food and Lodging are not Provided:	Federal Rates Apply

**OKLAHOMA DIVISION OF FORESTRY  
PERSONNEL  
Rates Updated 2012**

**NOTE: All Compact Personnel are guaranteed a Minimum of Eight Hours per Day**

Qualifications:	<b>ICT4 ( 39)</b>
Standard Rate of Pay:	Salary & Benefits – Varies by Individual
Overtime Rate:	Employee’s standard overtime rates apply*
Per Diem Rate, if Food and Lodging are not Provided:	Federal Rates Apply

**OKLAHOMA DIVISION OF FORESTRY  
PERSONNEL  
Rates Updated 2012**

**NOTE: All Compact Personnel are guaranteed a Minimum of Eight Hours per Day**

Qualifications:	<b>Miscellaneous Overhead</b>
Standard Rate of Pay:	Salary & Benefits – Varies by Individual
Overtime Rate:	Employee’s standard overtime rates apply*
Per Diem Rate, if Food and Lodging are not Provided:	Federal Rates Apply

**\* Overtime Rates**

Exempt employees receive 1.0 x Base pay for hours worked over 40/wk  
 Non-exempt employees receive 1.5 x Base pay for hours worked over 40/wk  
 Oklahoma’s standard workweek begins on Saturday at 0001 Hours and ends at 2400 on Friday.  
 Overtime accrues after forty hours have been worked in the standard work week

**SOUTH CAROLINA FORESTRY COMMISSION  
EQUIPMENT  
Rates Updated 2012**

**NOTE: Receiving States are responsible for repairing damaged equipment and, sending States are responsible for routine maintenance**

Type:	Tractor Plow
Make:	JD 700
Special Equipment: (LGP, Plow Type, Blade Type, With Foam, etc.)	Standard or LGP with either pull type or lift plow with winch and blade
Special Moving Requirements: (Oversized Load, etc)	None
Rates:	
Per Hour of Use w/Receiving State Supplying Fuel:	N/A (If receiving state supplies fuel, cost will be deducted from invoice)
Per Hour of Use w/Sending State Supplying Fuel:	100/hour
Per Mile w/Receiving State Supplying Fuel:	
Per Mile w/Sending State Supplying Fuel:	
Minimum Daily Charge Equipment:	2 hours/day
Transport Cost per Mile w/Receiving State supplying fuel:	
Transport Cost per Mile w/Sending State Supplying Fuel:	
Minimum Daily Charge for Transport: NOTE: List Operator Cost in Personnel Section.	

1  
2  
3  
4

**SOUTH CAROLINA FORESTRY COMMISSION  
EQUIPMENT  
Rates Updated 2012**

Type:	Tractor Plow
Make:	JD 650, Dresta T D 9, Cat D 5
Special Equipment: (LGP, Plow Type, Blade Type, With Foam, etc.)	Standard or LGP with either pull type or lift plow with winch and blade
Special Moving Requirements: (Oversized Load, etc)	None
Rates:	
Per Hour of Use w/Receiving State Supplying Fuel:	N/A (If receiving state supplies fuel, cost will be deducted from invoice
Per Hour of Use w/Sending State Supplying Fuel:	
Per Mile w/Receiving State Supplying Fuel:	\$90/hour
Per Mile w/Sending State Supplying Fuel:	
Minimum Daily Charge Equipment:	
Transport Cost per Mile w/Receiving State supplying fuel:	2 hours/day
Transport Cost per Mile w/Sending State Supplying Fuel:	
Minimum Daily Charge for Transport: NOTE: List Operator Cost in Personnel Section.	

5  
6  
7  
8  
9

**SOUTH CAROLINA FORESTRY COMMISSION  
EQUIPMENT  
Rates Updated 2012**

Type:	Tractor Plow Unit
Make:	JD 450, JD 550, Dresta TD 8
Special Equipment: (LGP, Plow Type, Blade Type, With Foam, etc.)	Standard or LGP with either pull type or lift plow with winch and blade
Special Moving Requirements: (Oversized Load, etc)	None
Rates:	
Per Hour of Use w/Receiving State Supplying Fuel:	N/A (If receiving state supplies fuel, cost will be deducted from invoice
Per Hour of Use w/Sending State Supplying Fuel:	\$65/hour
Per Mile w/Receiving State Supplying Fuel:	
Per Mile w/Sending State Supplying Fuel:	
Minimum Daily Charge Equipment:	
Transport Cost per Mile w/Receiving State supplying fuel:	2 hours/day

Transport Cost per Mile w/Sending State Supplying Fuel:	
Minimum Daily Charge for Transport: NOTE: List Operator Cost in Personnel Section.	

1  
2  
3  
4  
5

**SOUTH CAROLINA FORESTRY COMMISSION  
EQUIPMENT  
Rates Updated 2012**

Type:	Transport Lowboy
Make:	Various
Special Equipment: (LGP, Plow Type, Blade Type, With Foam, etc.)	None
Special Moving Requirements: (Oversized Load, etc)	None
Rates:	
Per Hour of Use w/Receiving State Supplying Fuel:	
Per Hour of Use w/Sending State Supplying Fuel:	
Per Mile w/Receiving State Supplying Fuel:	
Per Mile w/Sending State Supplying Fuel:	
Minimum Daily Charge Equipment:	
Transport Cost per Mile w/Receiving State supplying fuel:	
Transport Cost per Mile w/Sending State Supplying Fuel:	\$3.00/mile
Minimum Daily Charge for Transport:	\$3.00/mile
NOTE: List Operator Cost in Personnel Section.	\$50/day

6  
7

1  
2  
3  
4

**SOUTH CAROLINA FORESTRY COMMISSION  
EQUIPMENT  
Rates Updated 2012**

Type:	Transport
Make:	Various
Special Equipment: (LGP, Plow Type, Blade Type, With Foam, etc.)	10 wheeler
Special Moving Requirements: (Oversized Load, etc)	None
Rates:	
Per Hour of Use w/Receiving State Supplying Fuel:	
Per Hour of Use w/Sending State Supplying Fuel:	
Per Mile w/Receiving State Supplying Fuel:	
Per Mile w/Sending State Supplying Fuel:	
Minimum Daily Charge Equipment:	
Transport Cost per Mile w/Receiving State supplying fuel:	
Transport Cost per Mile w/Sending State Supplying Fuel:	\$2.50/mile
Minimum Daily Charge for Transport:	\$2.50/mile
NOTE: List Operator Cost in Personnel Section.	\$50/day

5  
6  
7  
8  
9

**SOUTH CAROLINA FORESTRY COMMISSION  
EQUIPMENT  
Rates Updated 2012**

Type:	Type 6 engine
Make:	Various
Special Equipment: (LGP, Plow Type, Blade Type, With Foam, etc.)	1 ton 4X4
Special Moving Requirements: (Oversized Load, etc)	None
Rates:	
Per Hour of Use w/Receiving State Supplying Fuel:	
Per Hour of Use w/Sending State Supplying Fuel:	\$45.00
Per Mile w/Receiving State Supplying Fuel:	
Per Mile w/Sending State Supplying Fuel:	\$1.50/mile
Minimum Daily Charge Equipment:	\$1.50/mile
Transport Cost per Mile w/Receiving State supplying fuel:	8 hours/day (\$360.00); Actual hours per day charged during travel to and from incident.

Transport Cost per Mile w/Sending State Supplying Fuel:  Minimum Daily Charge for Transport: NOTE: List Operator Cost in Personnel Section.	
------------------------------------------------------------------------------------------------------------------------------------------------------	--

1  
2  
3  
4  
5

**SOUTH CAROLINA FORESTRY COMMISSION  
EQUIPMENT  
Rates Updated 2012**

Type:	12-15 Passenger Van
Make:	Various
Special Equipment: (LGP, Plow Type, Blade Type, With Foam, etc.)	None
Special Moving Requirements: (Oversized Load, etc)	None
Rates:	
Per Hour of Use w/Receiving State Supplying Fuel:	
Per Hour of Use w/Sending State Supplying Fuel:	
Per Mile w/Receiving State Supplying Fuel:	
Per Mile w/Sending State Supplying Fuel:	\$.65/mile
Minimum Daily Charge Equipment:	\$.65/mile
Transport Cost per Mile w/Receiving State supplying fuel:	\$30/day
Transport Cost per Mile w/Sending State Supplying Fuel:	
Minimum Daily Charge for Transport: NOTE: List Operator Cost in Personnel Section.	

6  
7  
8  
9  
10

**SOUTH CAROLINA FORESTRY COMMISSION  
EQUIPMENT  
Rates Updated 2012**

Type:	Passenger Mini Van
Make:	Various
Special Equipment: (LGP, Plow Type, Blade Type, With Foam, etc.)	None
Special Moving Requirements: (Oversized Load, etc)	None
Rates:	
Per Hour of Use w/Receiving State Supplying Fuel:	
Per Hour of Use w/Sending State Supplying Fuel:	
Per Mile w/Receiving State Supplying Fuel:	



Per Mile w/Sending State Supplying Fuel:	\$.50/mile
Minimum Daily Charge Equipment:	\$.50/mile
Transport Cost per Mile w/Receiving State supplying fuel:	\$20/day
Transport Cost per Mile w/Sending State Supplying Fuel:	
Minimum Daily Charge for Transport: NOTE: List Operator Cost in Personnel Section.	

1  
2  
3  
4  
5

**SOUTH CAROLINA FORESTRY COMMISSION  
EQUIPMENT  
Rates Updated 2012**

Type:	Type 7 Engine or Pickup truck
Make:	Various
Special Equipment: (LGP, Plow Type, Blade Type, With Foam, etc.)	¾ or ½ ton 4X4
Special Moving Requirements: (Oversized Load, etc)	None
Rates:	
Per Hour of Use w/Receiving State Supplying Fuel:	
Per Hour of Use w/Sending State Supplying Fuel:	
Per Mile w/Receiving State Supplying Fuel:	
Per Mile w/Sending State Supplying Fuel:	\$.75/mile
Minimum Daily Charge Equipment:	\$.75/mile
Transport Cost per Mile w/Receiving State supplying fuel:	\$50/day
Transport Cost per Mile w/Sending State Supplying Fuel:	
Minimum Daily Charge for Transport: NOTE: List Operator Cost in Personnel Section.	

6  
7  
8  
9  
10

**SOUTH CAROLINA FORESTRY COMMISSION  
EQUIPMENT  
Rates Updated 2012**

Type:	Sedan
Make:	Various
Special Equipment: (LGP, Plow Type, Blade Type, With Foam, etc.)	None
Special Moving Requirements: (Oversized Load, etc)	None
Rates:	

Per Hour of Use w/Receiving State Supplying Fuel:	
Per Hour of Use w/Sending State Supplying Fuel:	
Per Mile w/Receiving State Supplying Fuel:	
Per Mile w/Sending State Supplying Fuel:	\$.50/mile
Minimum Daily Charge Equipment:	\$.50/mile
Transport Cost per Mile w/Receiving State supplying fuel:	\$20/day
Transport Cost per Mile w/Sending State Supplying Fuel:	
Minimum Daily Charge for Transport:	
NOTE: List Operator Cost in Personnel Section.	

1  
2  
3  
4  
5

**SOUTH CAROLINA FORESTRY COMMISSION  
EQUIPMENT  
Rates Updated 2012**

Type:	Water Handling Equipment Trailer
Make:	N/A
Special Equipment: (LGP, Plow Type, Blade Type, With Foam, etc.)	2500 feet hose, 3000 gallon drop tank, mark 3 pump, float pump, mini mark pump, mop up kit, assorted nozzles and fittings
Special Moving Requirements: (Oversized Load, etc)	Pintle hitch
Rates:	
Per Hour of Use w/Receiving State Supplying Fuel:	
Per Hour of Use w/Sending State Supplying Fuel:	
Per Mile w/Receiving State Supplying Fuel:	
Per Mile w/Sending State Supplying Fuel:	
Minimum Daily Charge Equipment:	
Transport Cost per Mile w/Receiving State supplying fuel:	\$100 day and replacement of lost or damaged equipment
Transport Cost per Mile w/Sending State Supplying Fuel:	
Minimum Daily Charge for Transport:	
NOTE: List Operator Cost in Personnel Section.	

6  
7

1  
2  
3  
4

**SOUTH CAROLINA FORESTRY COMMISSION  
EQUIPMENT  
Rates Updated 2012**

Type:	Mechanic Truck
Make:	various
Special Equipment: (LGP, Plow Type, Blade Type, With Foam, etc.)	1 ½ ton truck with tools, crane, welder, air compressor
Special Moving Requirements: (Oversized Load, etc)	None
Rates:	
Per Hour of Use w/Receiving State Supplying Fuel:	
Per Hour of Use w/Sending State Supplying Fuel:	
Per Mile w/Receiving State Supplying Fuel:	
Per Mile w/Sending State Supplying Fuel:	\$.75/mile
Minimum Daily Charge Equipment:	\$.75/mile
Transport Cost per Mile w/Receiving State supplying fuel:	\$50/day
Transport Cost per Mile w/Sending State Supplying Fuel:	
Minimum Daily Charge for Transport:	
NOTE: List Operator Cost in Personnel Section.	

5  
6  
7  
8  
9

**SOUTH CAROLINA FORESTRY COMMISSION  
EQUIPMENT  
Rates Updated 2012**

Type:	ATV 4 wheeler
Make:	Various
Special Equipment: (LGP, Plow Type, Blade Type, With Foam, etc.)	None
Special Moving Requirements: (Oversized Load, etc)	None
Rates:	
Per Hour of Use w/Receiving State Supplying Fuel:	\$10.00/hour
Per Hour of Use w/Sending State Supplying Fuel:	\$10.00/hour
Per Mile w/Receiving State Supplying Fuel:	
Per Mile w/Sending State Supplying Fuel:	
Minimum Daily Charge Equipment:	
Transport Cost per Mile w/Receiving State supplying fuel:	2 hours/day

Transport Cost per Mile w/Sending State Supplying Fuel:  Minimum Daily Charge for Transport: NOTE: List Operator Cost in Personnel Section.	
------------------------------------------------------------------------------------------------------------------------------------------------------	--

1  
2  
3  
4  
5

**SOUTH CAROLINA FORESTRY COMMISSION  
EQUIPMENT  
Rates Updated 2012**

Type:	Helicopter bucket
Make:	Bambi
Special Equipment: (LGP, Plow Type, Blade Type, With Foam, etc.)	780 gallons foam injected
Special Moving Requirements: (Oversized Load, etc)	None
Rates: Per Hour of Use w/Receiving State Supplying Fuel:  Per Hour of Use w/Sending State Supplying Fuel:  Per Mile w/Receiving State Supplying Fuel:  Per Mile w/Sending State Supplying Fuel:  Minimum Daily Charge Equipment:  Transport Cost per Mile w/Receiving State supplying fuel:  Transport Cost per Mile w/Sending State Supplying Fuel:  Minimum Daily Charge for Transport:  NOTE: List Operator Cost in Personnel Section.	No charge; receiving state is responsible for reimbursement of transportation cost and repair/replacement of any damage.

6  
7  
8  
9

1  
2  
3  
4

**SOUTH CAROLINA FORESTRY COMMISSION  
AIRCRAFT  
Rates Updated 2012**

Type:	Fixed Wing
Make:	Cessna
Model:	185
Special Equipment:	None
Passenger Capacity (exclude pilot):	3
Load Capacity or Retardant Gallons:	N/A
Rate::	
Per Hour of Use w/Receiving State Supplying Fuel:	\$130 per hour
Per Hour of Use w/Sending State Supplying Fuel:	\$130 per hour
Minimum Daily Charge: NOTE: List Operator Cost in Personnel	2 hours per day
Section:	

5  
6  
7  
8  
9

**SOUTH CAROLINA FORESTRY COMMISSION  
AIRCRAFT  
Rates Updated 2012**

Type:	Fixed Wing
Make:	Cessna
Model:	180 & 182
Special Equipment:	None
Passenger Capacity (exclude pilot):	3
Load Capacity or Retardant Gallons:	N/A
Rate::	
Per Hour of Use w/Receiving State Supplying Fuel:	\$130 per hour
Per Hour of Use w/Sending State Supplying Fuel:	\$130 per hour
Minimum Daily Charge: NOTE: List Operator Cost in Personnel Section:	2 hours per day

10  
11  
12  
13  
14

**SOUTH CAROLINA FORESTRY COMMISSION  
AIRCRAFT  
Rates Updated 2012**

Type:	Fixed Wing
Make:	Cessna
Model:	172 & T-41B
Special Equipment:	None
Passenger Capacity (exclude pilot):	3
Load Capacity or Retardant Gallons:	N/A
Rate:	
Per Hour of Use w/Receiving State Supplying Fuel:	\$115 per hour
Per Hour of Use w/Sending State Supplying Fuel:	\$115 per hour

Minimum Daily Charge: NOTE: List Operator Cost in Personnel Section:	2 hours per day
-------------------------------------------------------------------------	-----------------

**SOUTH CAROLINA FORESTRY COMMISSION  
PERSONNEL  
Rates Updated 2012**

**NOTE: All Compact Personnel are guaranteed a Minimum of Eight Hours per Day**

Qualifications:	
Standard Rate of Pay:	Salary plus benefits
Overtime Rate:	1 ½ times hourly rate for every hour over 40 in a work week
Per Diem Rate, if Food and Lodging are not Provided:	Food-\$32/day Lodging-actual cost not to exceed Federal Lodging rate

**TENNESSEE DIVISION OF FORESTRY  
EQUIPMENT  
Rates Updated 2012**

**NOTE: Receiving States are responsible for repairing damaged equipment and, sending States are responsible for routine maintenance**

Type:	Tractor/plow unit – Type 5
Make:	Cat D3GXL - 70 hp Cat D4GXL - 80 hp Cat D4G LGP - 80 hp
Special Equipment: (LGP, Plow Type, Blade Type, With Foam, etc.)	6 way blade, rear lift plow, enclosed cab, blade mounted winch
Special Moving Requirements: (Oversized Load, etc)	Use Fuelman fuel purchase system
Rates:	
Per Hour of Use w/Receiving State Supplying Fuel:	\$60.00/hr cost of fuel provided by receiving state deducted
Per Hour of Use w/Sending State Supplying Fuel:	
Per Mile w/Receiving State Supplying Fuel:	\$60.00/hr
Per Mile w/Sending State Supplying Fuel:	N/A
Minimum Daily Charge Equipment:	N/A
Transport Cost per Mile w/Receiving State supplying fuel:	4 hours per day (except travel days)
Transport Cost per Mile w/Sending State Supplying Fuel:	\$2.00/mi cost of fuel provided by receiving state deducted from rate
Minimum Daily Charge for Transport:	\$2.00/mi
NOTE: List Operator Cost in Personnel Section. Per diem rate for operators:	None CONUS rates

1  
2  
3  
4

**TENNESSEE DIVISION OF FORESTRY  
EQUIPMENT  
Rates Updated 2012**

Type:	Light engines - Type 6
Make:	Mallory & Wildfire
Special Equipment: (LGP, Plow Type, Blade Type, With Foam, etc.)	150 gallon water/foam 4 WD pickup, winch
Special Moving Requirements: (Oversized Load, etc)	Use Fuelman to purchase fuel
Rates:	
Per Hour of Use w/Receiving State Supplying Fuel:	\$40.00/hr of operation cost of fuel provided by receiving state deducted from rate
Per Hour of Use w/Sending State Supplying Fuel:	\$40.00/hr of operation
Per Mile w/Receiving State Supplying Fuel:	
Per Mile w/Sending State Supplying Fuel:	\$0.65/mi cost of fuel provided by receiving state deducted from rate
Minimum Daily Charge Equipment:	\$0.65/MI
Transport Cost per Mile w/Receiving State supplying fuel:	2 hour N/A
Transport Cost per Mile w/Sending State Supplying Fuel:	N/A
Minimum Daily Charge for Transport:	
NOTE: List Operator Cost in Personnel Section. Per diem rate for operator:	none CONUS rates

5  
6  
7  
8  
9

**TENNESSEE DIVISION OF FORESTRY  
EQUIPMENT  
Rates Updated 2012**

Type:	Passenger vehicles: SUV, pickup truck
Make:	various makes and models
Special Equipment: (LGP, Plow Type, Blade Type, With Foam, etc.)	4 WD, winch
Special Moving Requirements: (Oversized Load, etc)	Use Fuelman to purchase fuel
Rates:	
Per Hour of Use w/Receiving State Supplying Fuel:	N/A
Per Hour of Use w/Sending State Supplying Fuel:	N/A
Per Mile w/Receiving State Supplying Fuel:	\$0.65/mi cost of fuel provided by receiving state deducted from rate \$0.65/mi
Per Mile w/Sending State Supplying Fuel:	None
Minimum Daily Charge Equipment:	N/A

Transport Cost per Mile w/Receiving State supplying fuel:	N/A
Transport Cost per Mile w/Sending State Supplying Fuel:	N/A
Minimum Daily Charge for Transport:	CONUS rates
NOTE: List Operator Cost in Personnel Section. Per diem rate for operator:	

1  
2  
3  
4  
5

**TENNESSEE DIVISION OF FORESTRY  
EQUIPMENT  
Rates Updated 2012**

Type:	All Terrain Vehicles
Make:	various makes and models
Special Equipment: (LGP, Plow Type, Blade Type, With Foam, etc.)	4 WD, winch
Special Moving Requirements: (Oversized Load, etc)	Use Fuelman to purchase fuel
Rates:	
Per Hour of Use w/Receiving State Supplying Fuel:	\$9.90/hr cost of fuel provided by receiving state deducted from rate
Per Hour of Use w/Sending State Supplying Fuel:	\$9.90/hr
Per Mile w/Receiving State Supplying Fuel:	
Per Mile w/Sending State Supplying Fuel:	N/A
Minimum Daily Charge Equipment:	N/A
Transport Cost per Mile w/Receiving State supplying fuel:	none
Transport Cost per Mile w/Sending State Supplying Fuel:	N/A
Minimum Daily Charge for Transport:	N/A
NOTE: List Operator Cost in Personnel Section. Per diem rate for operator	N/A
	CONUS rates

6  
7



**TENNESSEE DIVISION OF FORESTRY  
PERSONNEL  
Rates Updated 2012**

**NOTE: All Compact Personnel are guaranteed a Minimum of Eight Hours per Day**

Qualifications:	20 person crew Type II A
Standard Rate of Pay:	Salary + benefits (use \$21.00 / hr / person for rough estimates)
Overtime Rate:	1 ½ after 40 hrs. per week
Per Diem Rate, if food and lodging are not provided:	CONUS

**TENNESSEE DIVISION OF FORESTRY  
PERSONNEL  
Rates Updated 2012**

**NOTE: All Compact Personnel are guaranteed a Minimum of Eight Hours per Day**

Qualifications:	Single resource overhead
Standard Rate of Pay:	Salary + benefits (use \$28.00 / hr / person for rough estimates)
Overtime Rate:	1 ½ after 40 hrs. per week
Per Diem Rate, if food and lodging are not provided:	CONUS

**TEXAS FOREST SERVICE  
EQUIPMENT  
Rates Updated 2012**

**NOTE: Receiving States are responsible for repairing damaged equipment and, sending States are responsible for routine maintenance**

Type:	John Deere Tractor Plow
Make:	JD-750
Special Equipment: (LGP, Plow Type, Blade Type, With Foam, etc.)	Some w/plow, some without
Special Moving Requirements: (Oversized Load, etc)	Some units need oversized load permit depending on blade width
Rates:	
Per Hour of Use w/Receiving State Supplying Fuel:	n/a (if receiving state supplies fuel, cost will be deducted from invoice)
Per Hour of Use w/Sending State Supplying Fuel:	\$98/hour
Per Mile w/Receiving State Supplying Fuel:	
Per Mile w/Sending State Supplying Fuel:	N/A
Minimum Daily Charge Equipment:	N/A
Transport Cost per Mile w/Receiving State supplying fuel:	N/A
Transport Cost per Mile w/Sending State Supplying Fuel:	N/A (if receiving state supplies fuel, cost will be deducted from invoice)
	\$1.90/mile

Minimum Daily Charge for Transport: NOTE: List Operator Cost in Personnel Section.	N/A
---------------------------------------------------------------------------------------	-----

1  
2  
3  
4  
5

**TEXAS FOREST SERVICE  
EQUIPMENT  
Rates Updated 2012**

Type:	John Deere Tractor Plow
Make:	JD-650
Special Equipment: (LGP, Plow Type, Blade Type, With Foam, etc.)	w/plow
Special Moving Requirements: (Oversized Load, etc)	Some units need oversized load permit depending on blade width
Rates:	
Per Hour of Use w/Receiving State Supplying Fuel:	n/a (if receiving state supplies fuel, cost will be deducted from invoice)
Per Hour of Use w/Sending State Supplying Fuel:	\$72/hour
Per Mile w/Receiving State Supplying Fuel:	
Per Mile w/Sending State Supplying Fuel:	N/A
Minimum Daily Charge Equipment:	N/A
Transport Cost per Mile w/Receiving State supplying fuel:	N/A
Transport Cost per Mile w/Sending State Supplying Fuel:	N/A (if receiving state supplies fuel, cost will be deducted from invoice)
	\$1.90/mile
Minimum Daily Charge for Transport:	
NOTE: List Operator Cost in Personnel Section.	N/A

6  
7  
8  
9  
10

**TEXAS FOREST SERVICE  
EQUIPMENT  
Rates Updated 2012**

Type:	John Deere Tractor Plow
Make:	JD-450/550
Special Equipment: (LGP, Plow Type, Blade Type, With Foam, etc.)	w/plow
Special Moving Requirements: (Oversized Load, etc)	None
Rates:	
Per Hour of Use w/Receiving State Supplying Fuel:	n/a (if receiving state supplies fuel, cost will be deducted from invoice)
Per Hour of Use w/Sending State Supplying Fuel:	\$60/hour
Per Mile w/Receiving State Supplying Fuel:	
Per Mile w/Sending State Supplying Fuel:	N/A
Minimum Daily Charge Equipment:	N/A

Transport Cost per Mile w/Receiving State supplying fuel:	N/A
Transport Cost per Mile w/Sending State Supplying Fuel:	N/A (if receiving state supplies fuel, cost will be deducted from invoice) \$1.90/mile
Minimum Daily Charge for Transport: NOTE: List Operator Cost in Personnel Section.	N/A

1  
2  
3  
4  
5

**TEXAS FOREST SERVICE  
EQUIPMENT  
Rates Updated 2012**

Type:	Engine, Type III
Make:	various
Special Equipment: (LGP, Plow Type, Blade Type, With Foam, etc.)	Minimum of three personnel
Special Moving Requirements: (Oversized Load, etc)	None
Rates:	
Per Hour of Use w/Receiving State Supplying Fuel:	N/A (if receiving state supplies fuel, cost will be deducted from invoice)
Per Hour of Use w/Sending State Supplying Fuel:	\$72/hour
Per Mile w/Receiving State Supplying Fuel:	
Per Mile w/Sending State Supplying Fuel:	N/A (if receiving state supplies fuel, cost will be deducted from invoice)
Minimum Daily Charge for Equipment: NOTE: List Operator Cost in Personnel Section.	\$1.50 N/A

6  
7  
8  
9  
10

**TEXAS FOREST SERVICE  
EQUIPMENT  
Rates Updated 2012**

Type:	Engine, Type VI
Make:	various
Special Equipment: (LGP, Plow Type, Blade Type, With Foam, etc.)	Minimum of two personnel
Special Moving Requirements: (Oversized Load, etc)	None
Rates:	
Per Hour of Use w/Receiving State Supplying Fuel:	N/A (if receiving state supplies fuel, cost will be deducted from invoice)
Per Hour of Use w/Sending State Supplying Fuel:	\$60/hour
Per Mile w/Receiving State Supplying Fuel:	N/A (if receiving state supplies fuel, cost will be deducted from invoice)
Per Mile w/Sending State Supplying Fuel:	\$1.20
Minimum Daily Charge for Equipment: NOTE: List Operator Cost in Personnel Section.	N/A

1  
2  
3  
4

**TEXAS FOREST SERVICE  
EQUIPMENT  
Rates Updated 2012**

Type:	Misc. Support Vehicles & Equipment
Make:	various
Special Equipment: (LGP, Plow Type, Blade Type, With Foam, etc.)	
Special Moving Requirements: (Oversized Load, etc)	None
Rates: Sedan or SUV Pickup, ½-¾ ton Pickup, 1-ton Passenger Van Truck Tractor, 5-ton Technical Support Trailer	.58/mile .75/mile .85/mile .85/mile \$2.40/mile \$1.00/mile and actual cost of replacement items
NOTE: List Operator Cost in Personnel Section.	

5  
6  
7  
8  
9  
10

**TEXAS FOREST SERVICE  
PERSONNEL  
Rates Updated 2012**

**NOTE: All Compact Personnel are guaranteed a Minimum of Eight Hours per Day**

Qualifications:	Various NWCG qualifications
Standard Rate of Pay:	Varies
Overtime Rate:	Time and a half over 40
Per Diem Rate, if Food and Lodging are not Provided:	Standard GSA domestic per diem rates

11  
12  
13  
14  
15  
16  
17

**VIRGINIA DEPARTMENT OF FORESTRY  
EQUIPMENT  
Rates Updated 2012**

**NOTE: Receiving States are responsible for repairing damaged equipment and, sending States are responsible for routine maintenance**

Type:	Tractor-plow units
Make:	John Deere 450 (G, H, J Models)
Special Equipment: (LGP, Plow Type, Blade Type, With Foam, etc.)	Angle Blades
Special Moving Requirements: (Oversized Load, etc)	Truck Transport (10-wheeler)
Rates: Per Hour of Use w/Receiving State Supplying Fuel:	N/A
Per Hour of Use w/Sending State Supplying Fuel:	\$65/hr
Per Mile w/Receiving State Supplying Fuel:	N/A
Per Mile w/Sending State Supplying Fuel:	N/A
Minimum Daily Charge Equipment:	2 hour minimum/day (\$130/day)

Transport Cost per Mile w/Receiving State supplying fuel:	N/A
Transport Cost per Mile w/Sending State Supplying Fuel:	\$1.50/mile
Minimum Daily Charge for Transport: NOTE: List Operator Cost in Personnel Section.	N/A

1  
2  
3  
4  
5

**VIRGINIA DEPARTMENT OF FORESTRY  
EQUIPMENT  
Rates Updated 2012**

Type:	Type 6 Engine
Make:	Ford 450 4X4
Special Equipment: (LGP, Plow Type, Blade Type, With Foam, etc.)	Foam Unit
Special Moving Requirements: (Oversized Load, etc)	N/A
Rates:	
Per Hour of Use w/Receiving State Supplying Fuel:	N/A
Per Hour of Use w/Sending State Supplying Fuel:	\$35/hr
Per Mile w/Receiving State Supplying Fuel:	N/A
Per Mile w/Sending State Supplying Fuel:	\$.555/mile
Minimum Daily Charge Equipment:	2 hour minimum/day ( \$70/day)
Transport Cost per Mile w/Receiving State supplying fuel:	N/A
Transport Cost per Mile w/Sending State Supplying Fuel:	N/A
Minimum Daily Charge for Transport: NOTE: List Operator Cost in Personnel Section.	N/A

6  
7  
8  
9  
10

**VIRGINIA DEPARTMENT OF FORESTRY  
EQUIPMENT  
Rates Updated 2012**

Type:	¾ Ton 4X4 Pick-Ups
Make:	Various
Special Equipment: (LGP, Plow Type, Blade Type, With Foam, etc.)	50 gallon water tank w/aqua-duct pump & small foam unit
Special Moving Requirements: (Oversized Load, etc)	N/A
Rates:	
Per Hour of Use w/Receiving State Supplying Fuel:	N/A
Per Hour of Use w/Sending State Supplying Fuel:	N/A

Per Mile w/Receiving State Supplying Fuel:	N/A
Per Mile w/Sending State Supplying Fuel:	\$.555/mile
Minimum Daily Charge Equipment:	N/A
Transport Cost per Mile w/Receiving State supplying fuel:	N/A
Transport Cost per Mile w/Sending State Supplying Fuel:	N/A
Minimum Daily Charge for Transport: NOTE: List Operator Cost in Personnel Section.	N/A

1  
2  
3  
4  
5

**VIRGINIA DEPARTMENT OF FORESTRY  
EQUIPMENT  
Rates Updated 2012**

Type:	Mobile Command Van
Make:	Chevrolet C5500 Chassis
Special Equipment: (LGP, Plow Type, Blade Type, With Foam, etc.)	Generator, Satellite Internet Capable
Special Moving Requirements: (Oversized Load, etc)	N/A
Rates:	
Per Hour of Use w/Receiving State Supplying Fuel:	N/A
Per Hour of Use w/Sending State Supplying Fuel:	N/A
Per Mile w/Receiving State Supplying Fuel:	N/A
Per Mile w/Sending State Supplying Fuel:	\$1.50/mile
Minimum Daily Charge Equipment:	\$200/day + Actual costs of telecommunications & internet services
Transport Cost per Mile w/Receiving State supplying fuel:	N/A
Transport Cost per Mile w/Sending State Supplying Fuel:	N/A
Minimum Daily Charge for Transport: NOTE: List Operator Cost in Personnel Section.	N/A

6  
7

1  
2  
3  
4

**VIRGINIA DEPARTMENT OF FORESTRY  
EQUIPMENT  
Rates Updated 2012**

Type:	Miscellaneous Small Equipment
Make:	Various
Special Equipment: (LGP, Plow Type, Blade Type, With Foam, etc.)	Chainsaws; Fireline blowers; ATVs
Special Moving Requirements: (Oversized Load, etc)	N/A
Rates:	
Per Hour of Use w/Receiving State Supplying Fuel:	N/A
Per Hour of Use w/Sending State Supplying Fuel:	\$5/hour; \$10/hour for ATV
Per Mile w/Receiving State Supplying Fuel:	N/A
Per Mile w/Sending State Supplying Fuel:	N/A
Minimum Daily Charge Equipment:	\$5/day; \$10/day for ATV
Transport Cost per Mile w/Receiving State supplying fuel:	N/A
Transport Cost per Mile w/Sending State Supplying Fuel:	N/A
Minimum Daily Charge for Transport: NOTE: List Operator Cost in Personnel Section.	N/A

5  
6  
7  
8  
9

**VIRGINIA DEPARTMENT OF FORESTRY  
AIRCRAFT  
Rates Updated 2012**

Type:	Fixed Wing Aircraft
Make:	Cessna 310
Model:	U3B
Special Equipment:	Camera hole in floor
Passenger Capacity (exclude pilot):	3
Load Capacity or Retardant Gallons:	N/A
Rate::	
Per Hour of Use w/Receiving State Supplying Fuel:	N/A
Per Hour of Use w/Sending State Supplying Fuel:	\$226/hour + actual salary of pilot
Minimum Daily Charge:	\$226/day
NOTE: List Operator Cost in Personnel Section:	

10  
11

1  
2  
3  
4  
5  
6

**VIRGINIA DEPARTMENT OF FORESTRY  
PERSONNEL  
Rates Updated 2012**

**NOTE: All Compact Personnel are guaranteed a minimum of eight hours per day**

Qualifications:	Various Qualified ICS positions
Standard Rate of Pay:	Virginia DOF personnel salary rates
Overtime Rate:	1 ½ time over 40 hours per week
Per Diem Rate, if Food and Lodging are not Provided:	Federal per diem rate for locality