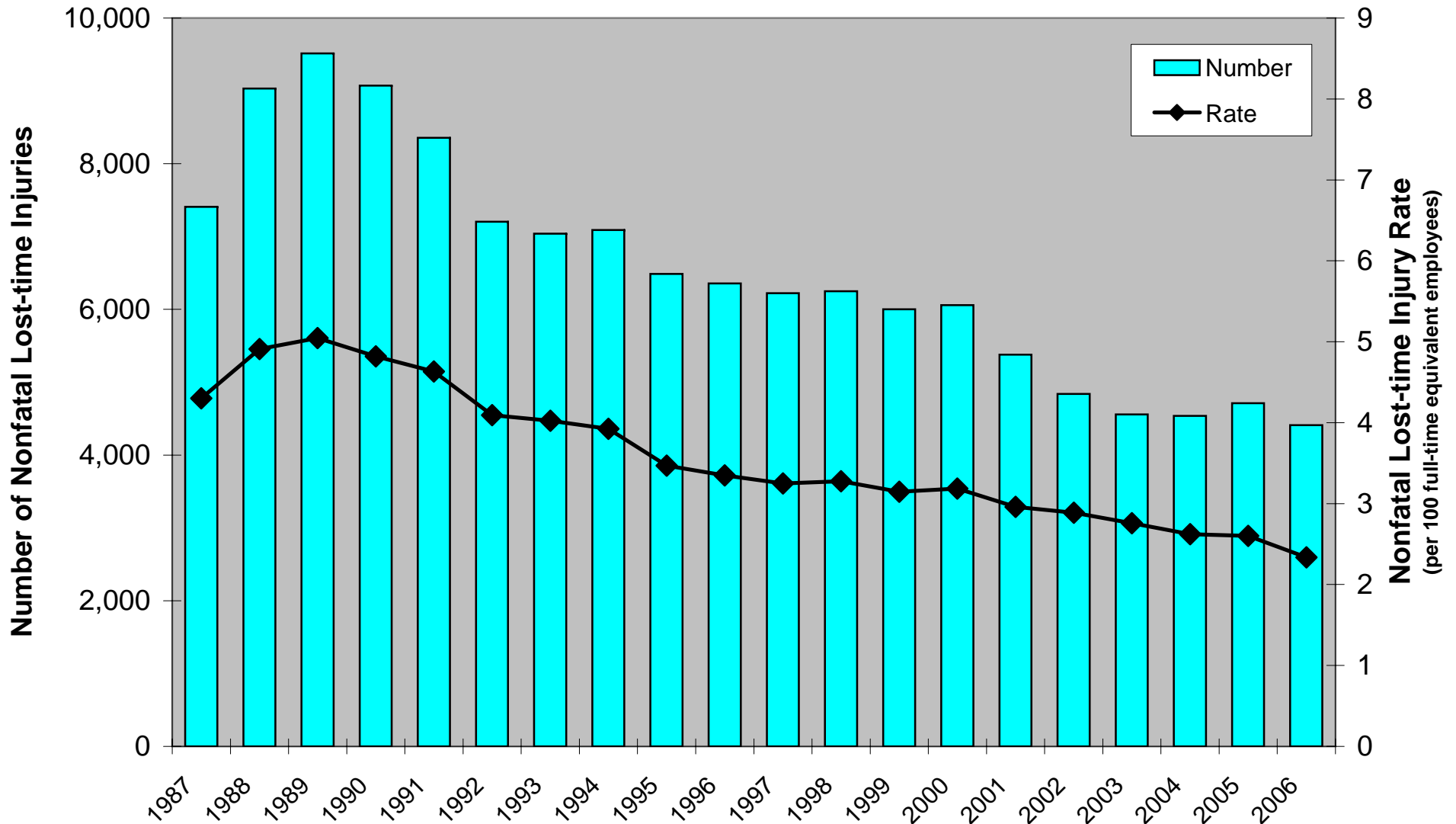


# Number and Rate of Metal/Nonmetal Mining Nonfatal Lost-time Injuries by Year, 1987-2006



Data source: MSHA

NOTES: (1) Excludes office employees. (2) Full-time equivalent (FTE) employees were computed using reported employee hours (2,000 = 1 FTE). (3) "Metal/Nonmetal" includes metal, nonmetal, stone, and sand and gravel.