

Scientist cabin

The R/V Urraca, a 96-foot general-purpose research vessel that is owned and operated by STRI, has a crew of five, and can accommodate scientific parties of up to nine in comfort.



5m dinghy



Oceanographic winch



Stern platform



Seatables

Launched in 1987, the R/V Urraca commenced service with STRI in October 1994, and was refitted in February 2002. The ship, a central facility of the STRI marine sciences program, is based at STRI's Naos Marine Laboratory near the Pacific entrance to the Panama Canal, in the Republic of Panamá. Although primarily a facility for marine research, the vessel also provides access to remote areas for terrestrial research.

The vessel's shallow draft allows it to operate efficiently in shallow coastal areas.

Area of operations: While most of the ship's activity occurs along the Caribbean and Pacific coasts of Panamá, research cruises have been made to Honduras in the Caribbean, and to Costa Rica (Isla del Coco), Clipperton, El Salvador and Mexico in the Pacific.



Bridge

Urraca contact and communications

For Urraca Charter Rates and general enquires:

Pierre J. Fuentes
Vessel Superintendent
Phone: (+507 = Panama) 212-8700
Mobile: +507 6673-0690
Fax: (+507 = Panama) 212-8790
E-mail: fuentesp@si.edu

Mailing address:
Smithsonian Tropical Research Institute
(Attention P. Fuentes, R/V Urraca)
Unit 0948
APO AA 34002-0948, USA

Urraca website:
www.stri.org/Urraca



Research Vessel URRACA



Smithsonian Tropical Research Institute
Panama, Republic of Panama





Science facilities

All internal areas of the R/V Urraca are air conditioned. The **lower deck** contains cabins for the crew and science party, engineering spaces, the laundry and the science storeroom. The **main deck** has the captain's and chief scientist's cabins, the galley, separate crew and scientist salons, the ship's office and the rear working deck.

Science Berths: 9 total; 8 in 4 double occupancy cabins in lower deck (2 with ensuite head, 2 with ensuite head+shower) 1 chief scientist cabin on main deck with ensuite head+shower.

The open rear deck (6m x 5.43m) has the **SCUBA compressors**, the **oceanographic winch** and **A-frame and seawater/sorting tables** (1.77m wide x 0.15m deep x 0.76m long). Overboard access is through the

transom, attached to which there is a large **diving platform** mounted at the water line. The upper deck has the bridge and the mate's cabin forward, the flying bridge, and the crane and **two workboats** at the rear.

A **controllable pitch propeller** system and **bow-thruster** allow infinite control of speed and excellent station keeping in sea conditions up to state 4. The vessel's shallow draft (8.3ft) permits operations in nearshore shallow waters.

Inmarsat -B provides telephone, high-capacity email, telex and fax communications and **Inmarsat -C** provides low -capacity email contact. Cellular telephones, single sideband and VHF radios complete the communications outfit.

Two scuba compressors are available, a

primary 10.8 cfm unit and a secondary 5.5 cfm unit. These, plus 25 X 80 cft aluminum scuba tanks, DAN Oxygen and First Aid Kits, and dive weights provide adequate diving capacity for 9 divers.

A 30hp electro-hydraulic **oceanographic winch**, with electro-active level wind and 1,300 meters of 3X19 strand 3/8" galvanized oceanographic cable is capable of 3,000 lb. continuous and 7,000 lb. intermittent line-pull at 61 m/minute at bare drum. The winch has instruments at the control station to monitor line speed, line out, and line tension. As an aid to users a set of LCD displays on the back deck that are connected to bridge instruments show current position, speed and depth.

The stern **A-frame** has 8' clear width to 5'

above deck and 13'6" clearance height under sheave, a 14,000 lb safe working load and 5,000 lb lift capacity.

An **articulating boom crane** with a maximum capacity of 7,700 lbs. is installed on the boat deck. With extensions fitted, this crane has the capability for work over the stern.

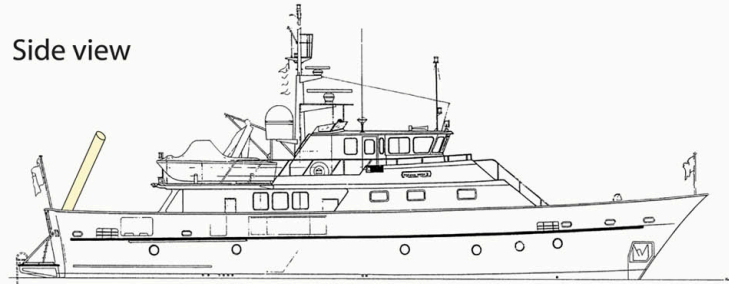
Two 5-meter Avon Rigid Inflatable Boats (8 person capacity) with 50-60 HP outboards.

Science work areas include a **science store** (9.5m², on the lower deck), the main salon (18.5m²) and the rear of the maindeck (6m x 5.43m).

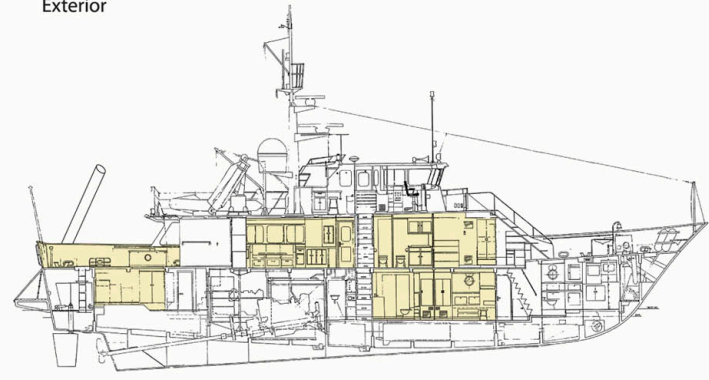
The **computer office** provides 1 Desktop; 1 Laptop; scanner/ printer/copier; **recreational**; electronics include an LCD Flat screen TV 20"; VHS & DVD; radio, CD & tape.

A-frame and crane (both at maximum extension)

Side view

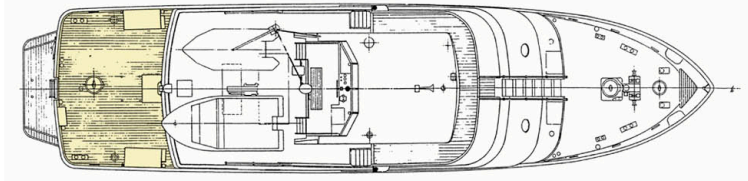


Exterior

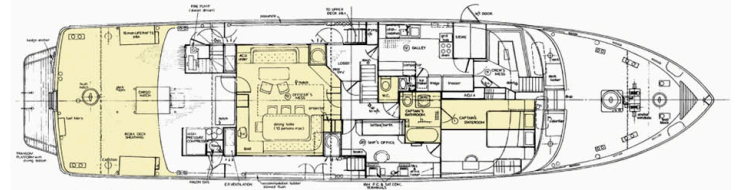


Interior

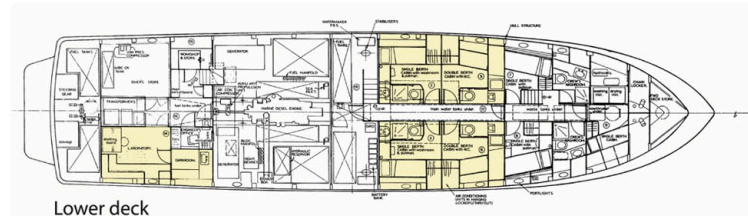
Top view



Top deck



Main deck



Lower deck

RV Urraca's characteristics

Construction: Fiberglass hull with aluminum superstructure

Length: L.O.A. 29.36 m

Beam: 7.10 m

Draft: 2.53 m

Displacement: GRT 153.9 t

Speed (knots): full 12.6; cruise 9.5; minimum <1.0

Range: @ 7 kts 5,500 nm; @ 9.5 kts 3,000 nm

Crew: 5 total (Captain, Mate, Chief Engineer, Engineer, Cook/Deck Hand)

Port of Registry: Washington D.C.

 Science Areas

Urraca website: www.stri.org/Urraca