

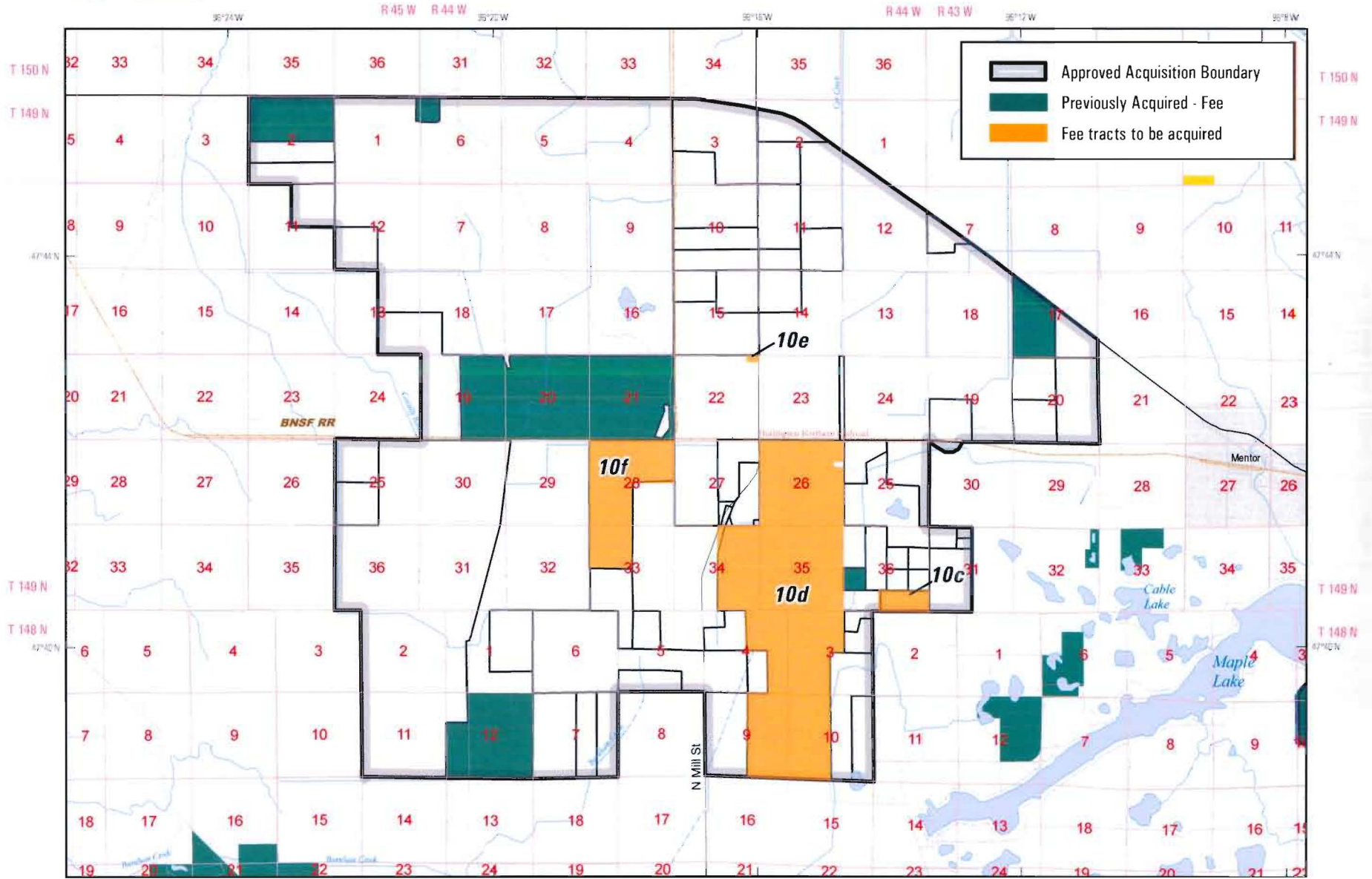


U.S. Fish & Wildlife Service

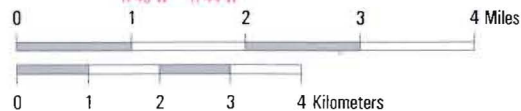
# Glacial Ridge National Wildlife Refuge

Polk County, Minnesota

The Nature Conservancy - Tract 10c-f



Produced in the Division of Realty  
 Fort Snelling, MN  
 Land Status Current to: 12/14/08  
 Base Map Source: ESRI Streetmap  
 Fifth Principal Meridian



**United States Department of the Interior  
Fish and Wildlife Service  
Realty**

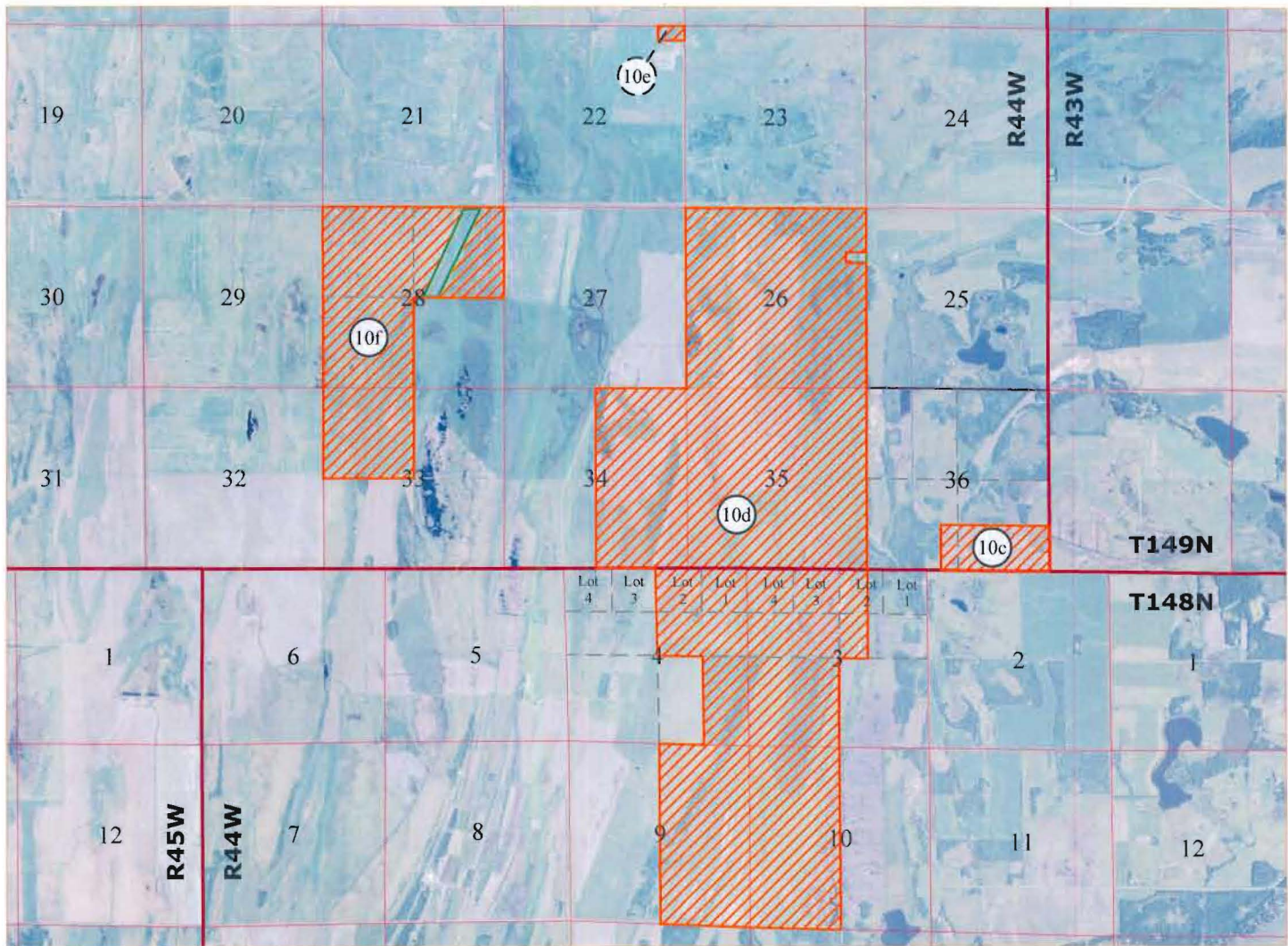
**OWNER: THE NATURE CONSERVANCY**

**TRACT NO.: (10c-f) 3,537 ACRES +/-**

**UNIT: Glacial Ridge NWR**

**Polk County, State of Minnesota**

**DESCRIPTION: T148-149N, R44W, Fifth P.M.**



**Base: USDA NAIP DOQ 2003**

**1 INCH = 1 MILE**

**LEGEND**

- |  |                           |  |              |
|--|---------------------------|--|--------------|
|  | <b>Agriculture</b>        |  | <b>Swamp</b> |
|  | <b>Grass</b>              |  | <b>Marsh</b> |
|  | <b>Hay, wild</b>          |  | <b>Water</b> |
|  | <b>Timber</b>             |  |              |
|  | <b>Brush</b>              |  |              |
|  | <b>Photograph Station</b> |  |              |

**Examined by** \_\_\_\_\_

**Platted by** SMK 11/18/08

**Checked by** PGC 11/20/08

**Exhibit** \_\_\_\_\_