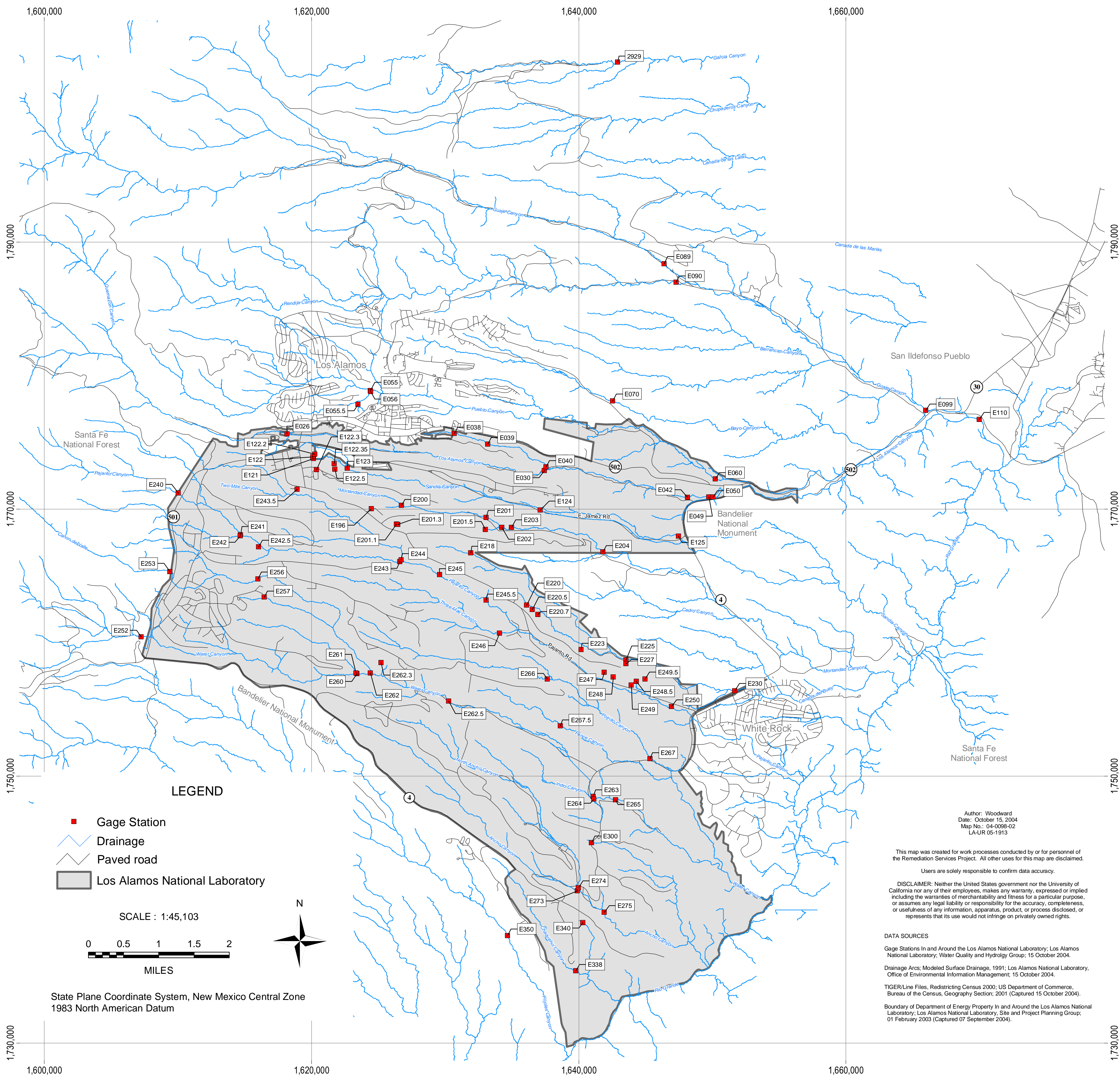


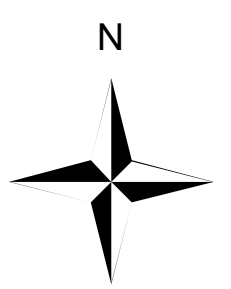
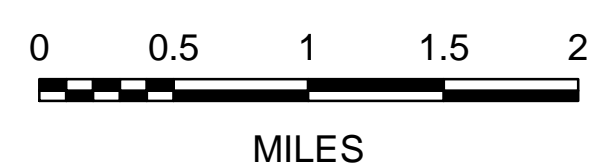
# Requirement 3: Locations of Surface Water Gaging Stations at Los Alamos National Laboratory



## LEGEND

- Gage Station
- Drainage
- Paved road
- Los Alamos National Laboratory

SCALE : 1:45,103



State Plane Coordinate System, New Mexico Central Zone  
1983 North American Datum

Author: Woodward  
Date: October 15, 2004  
Map No.: 04-0098-02  
LA-UR 05-1913

This map was created for work processes conducted by or for personnel of the Remediation Services Project. All other uses for this map are disclaimed. Users are solely responsible to confirm data accuracy.

DISCLAIMER: Neither the United States government nor the University of California nor any of their employees, makes any warranty, expressed or implied including the warranties of merchantability and fitness for a particular purpose, or assumes any legal liability or responsibility for the accuracy, completeness, or usefulness of any information, apparatus, product, or process disclosed, or represents that its use would not infringe on privately owned rights.

### DATA SOURCES

- Gage Stations In and Around the Los Alamos National Laboratory; Los Alamos National Laboratory; Water Quality and Hydrology Group; 15 October 2004.
- Drainage Arcs; Modeled Surface Drainage, 1991; Los Alamos National Laboratory, Office of Environmental Information Management; 15 October 2004.
- TIGER/Line Files, Redistricting Census 2000; US Department of Commerce, Bureau of the Census, Geography Section; 2001 (Captured 15 October 2004).
- Boundary of Department of Energy Property In and Around the Los Alamos National Laboratory; Los Alamos National Laboratory, Site and Project Planning Group; 01 February 2003 (Captured 07 September 2004).