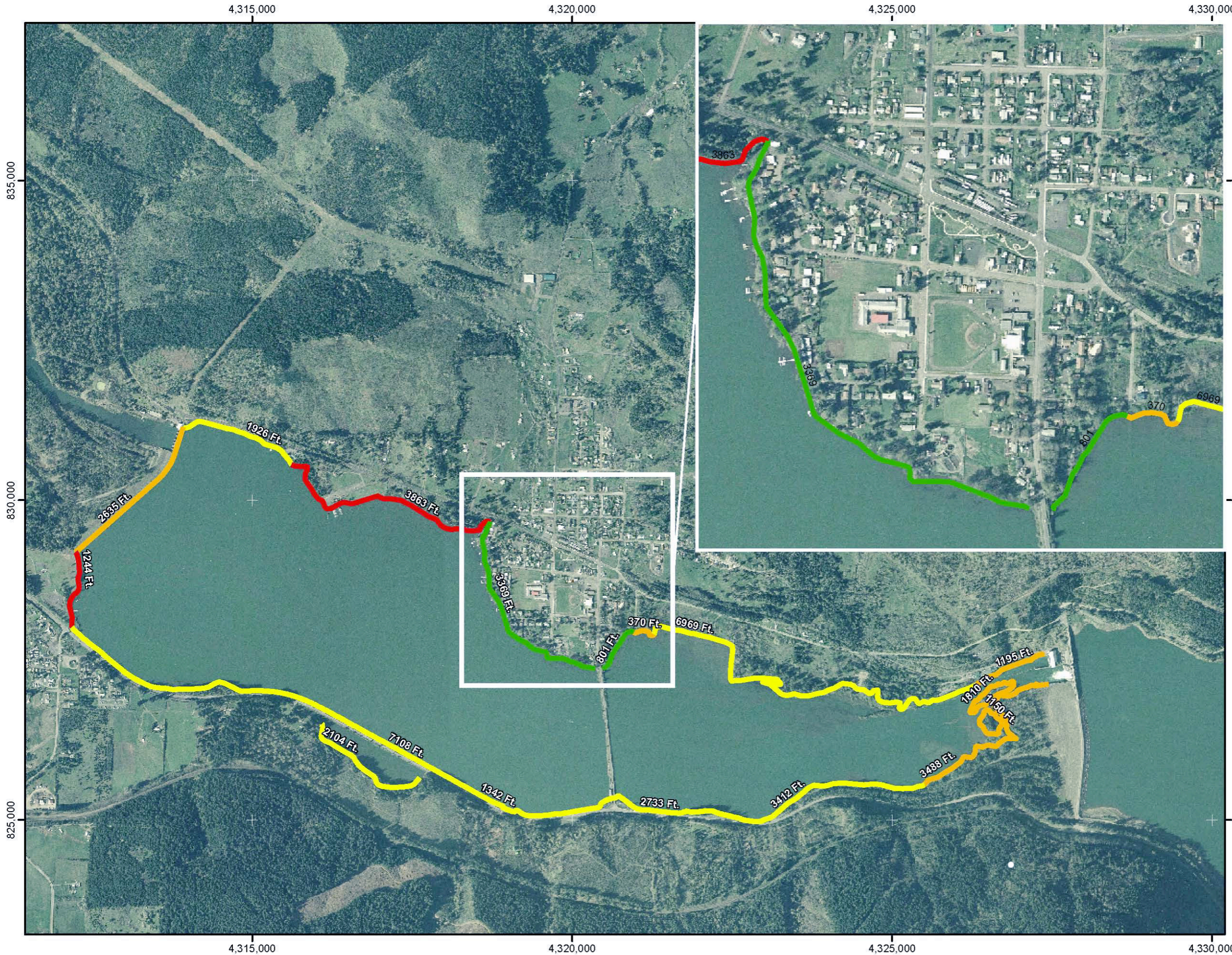


# Dexter Lake Shoreline Management



**Dexter Lake Shoreline Management Exhibit 1**

0 750 1,500 3,000  
Feet

N  
W E  
S

**US Army Corps of Engineers**  
Portland District

**Shoreline Management**

- Limited Development Area (4,170 ft.)
- Limited Access Area (10,648 ft.)
- Protected Shoreline Area (25,594 ft.)
- Public Recreation Area (5,107 ft.)

Projection: State Plane, Oregon South Zone, NAD83, Feet.  
Aerial Photography dated 2004.  
CENWP-EC-TG (G. Bertrand) Revised 5 July 2007

