

Figure 1

Shawnee National Forest Hiker/Equestrian Trails Designation Project Interim Trail Map 2007

Eagle Creek and Big Grand Pierre Creek
Watersheds

Herod Vicinity

NOT FOR RESALE

Shawnee National Forest Rules for the Big Grand Pierre Creek, Eagle Creek, Lusk Creek and Upper Bay Creek Watersheds (the areas depicted on this map)

What is an Interim Trail?

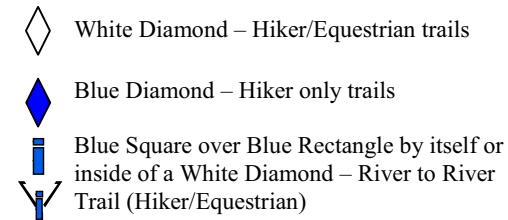
Many of the trails that were designated in the Record of Decision for the Trails Designation Project have been identified as needing reconstruction. Some trails will even require realignment to a new location in order to maintain them to an all weather standard. Interim trails are routes that will be used temporarily until these realigned trails can be constructed. Interim trails exist in all four of the watersheds and have been chosen from among existing trails to complete loops and to make available some of the most popular riding destinations. As construction is completed and new trails are available these interim routes will be closed and rehabilitated. The Interim Trails Map will be updated yearly to show where new trail segments have been completed. Please visit any Shawnee National Forest office to obtain the most up-to-date version of the map.

Trail Signs and Symbols

Signing at Trail Junctions began in 2006 and should be completed in 2007. Look near the junctions of designated trails for wooden signs with routed numbers and letters.



In areas outside of wilderness the trail signs have rectangular sides. In addition to signs at junctions, non-wilderness trails may also have reassurance markers at intervals along the trail. These markers will generally appear as follows:



Inside of the Lusk Creek, Bay Creek and Garden of the Gods Wilderness Areas, where the experience is meant to be more primitive and challenging trails will usually be signed at trail junctions only. Look for five sided signs such as that pictured above.

Interim Horse Highlines

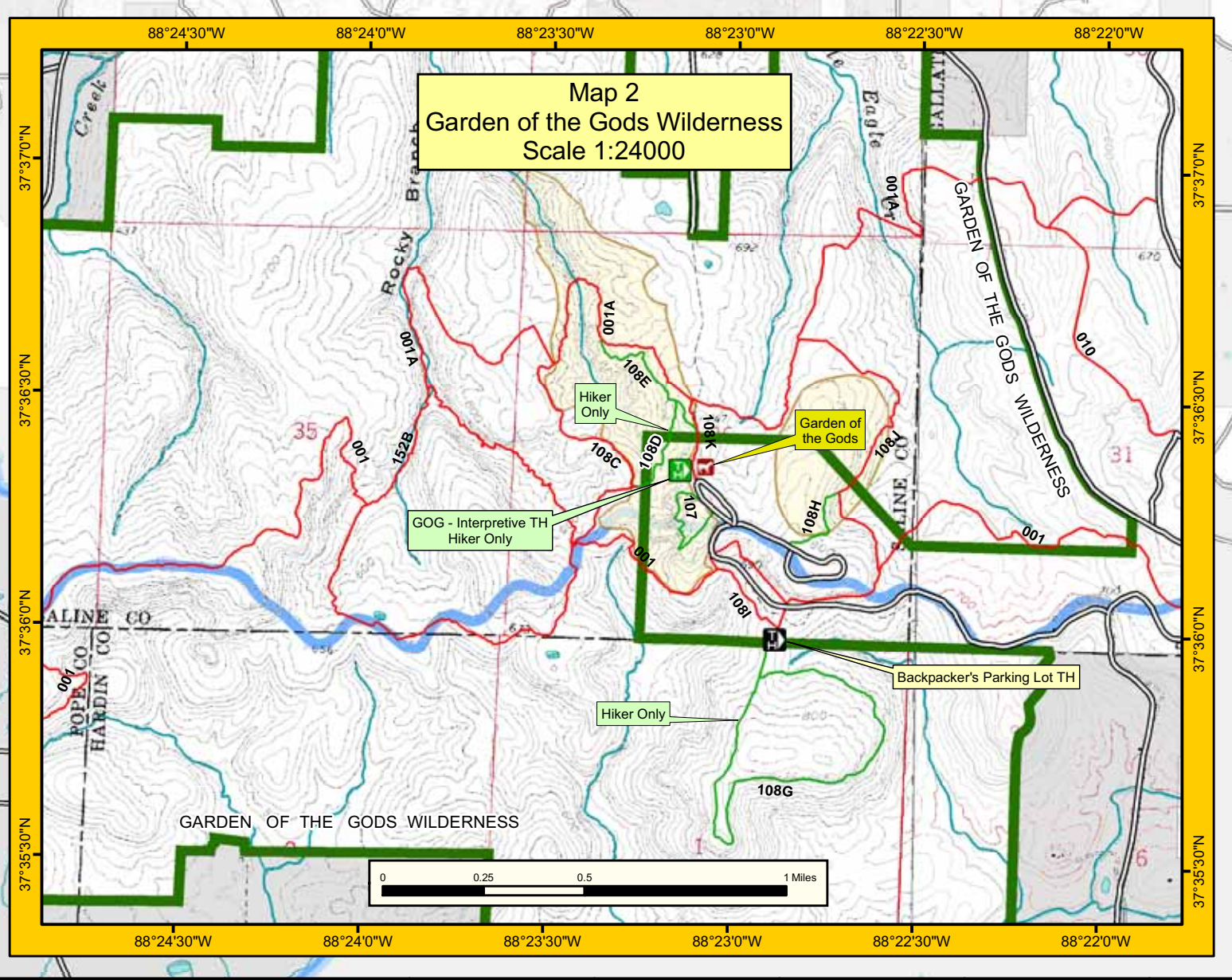
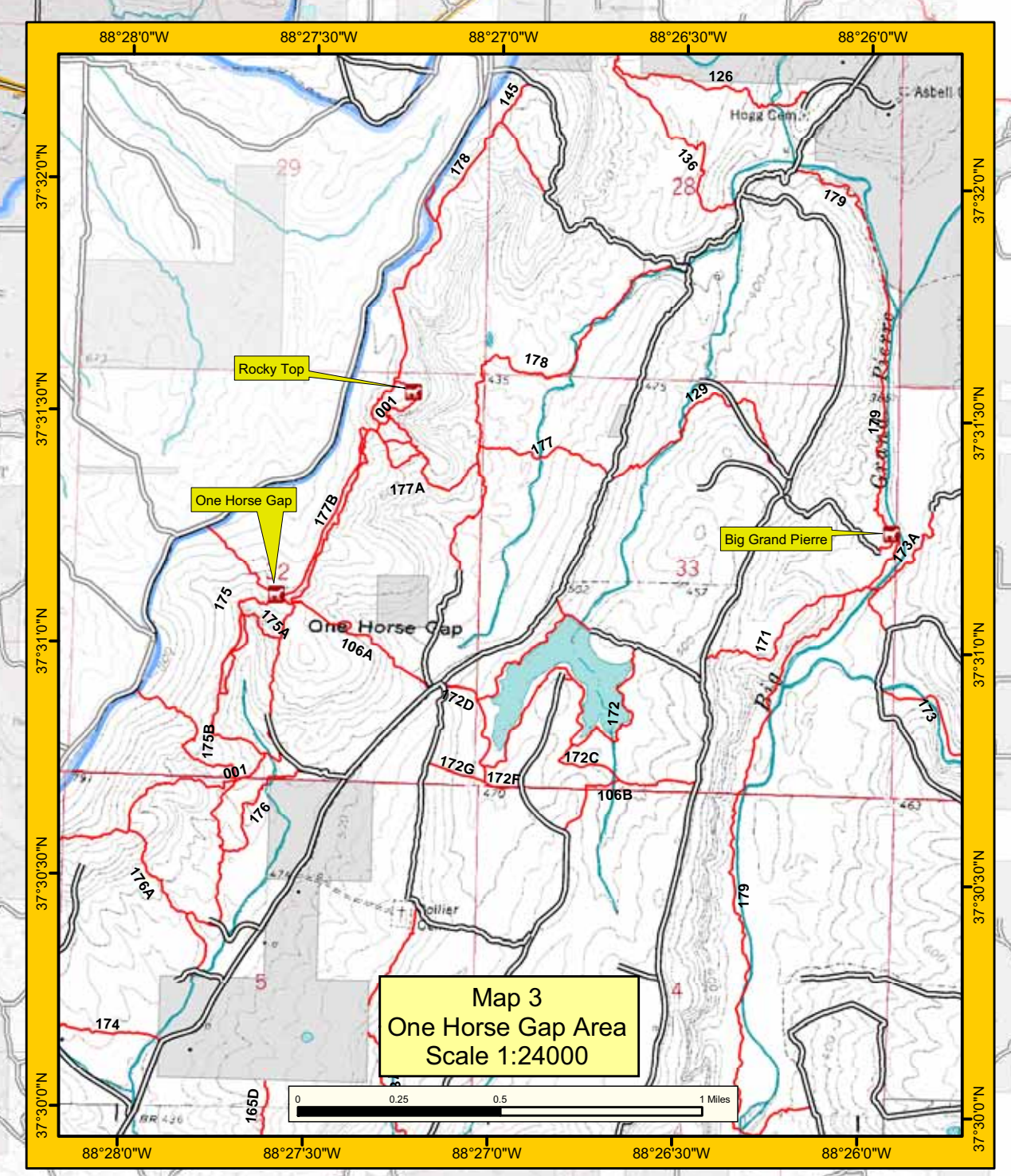
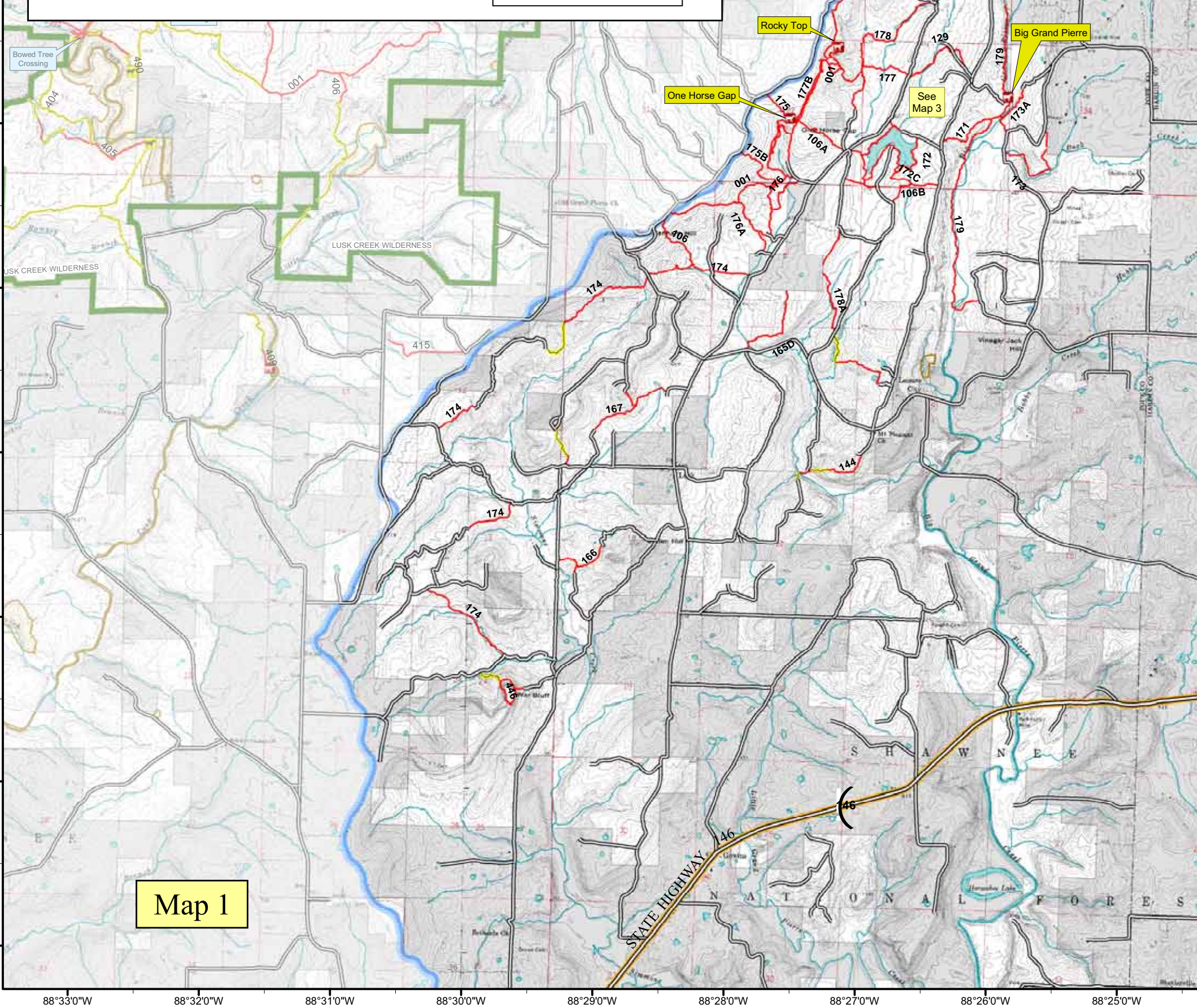
In several places throughout the four watersheds volunteers have placed high lines so that equestrians would have a place to tie stock without causing damage to live trees. Over time some of these areas will be moved further from the trail, away from private land or to a spot with more suitable soils. These areas are shown with the Interim Horse Tie Up symbol. Until the areas are moved, use of the existing area is encouraged.

Ride-Through Only Trail at Saltpeter Cave

Trail #486 past Saltpeter Cave, and portions of Trail #481 past Natural Bridge in the Lusk Creek Wilderness have been designated as ride-through only. Equestrians are welcome to ride this trail but are asked not to stop at Saltpeter Cave or at Natural Bridge. For longer visits to these two sites equestrians are asked to tie their horses at the high line area just east of Natural Bridge and walk back to the sites.

Safety Tips

- Take extra precautions during hunting season.
- Let a family member or friend know where you are going and when you expect to return.
- Many of the trails depicted on this map intersect with roads. If you choose to use a road as a part of your hike or ride be aware of traffic laws and traffic safety.
- Expect the unexpected in the backcountry. Consider carrying the following safety items among the gear you take to the back country.
 - A map and compass (and the ability to use them)
 - Extra food and drinking water
 - Rain gear
 - Extra clothing layers during cooler seasons
 - Flashlight
 - Pocketknife
 - First-aid kit
 - Protection from sun and insects
 - Waterproof matches or a lighter



Where can I Tie My Horse?

Horses should not be tied directly to trees. High Lines have been constructed by volunteers in the following locations to provide places for equestrians to stop and tie off their horses. When stopping outside of one of these areas please cross tie or otherwise restrain your animals out of reach of live trees.

Big Grand Pierre Watershed Highlines			
High Line	Latitude	Longitude	Access Trail
Rocky Top	37° 31' 31" N	88° 27' 12" W	177, 001
One Horse Gap	37° 31' 05" N	88° 27' 32" W	001, 106, 175, 177
Hogg Cemetery	37° 32' 35" N	88° 26' 34" W	169
Grand Pierre	37° 31' 15" N	88° 25' 55" W	179
Eagle Creek Watershed Highlines			
High Line	Latitude	Longitude	Access Trail
Garden of the Gods	37° 36' 20" N	88° 23' 05" W	108K
Buzzard Point	37° 36' 01" N	88° 21' 33" W	001
Initial Tree	37° 36' 25" N	88° 17' 47" W	150, 005

What is a non-native invasive species?

Non-native invasive species are plants and animals that are introduced outside of their normal range that reproduce rapidly and cause major changes to the areas where they become established. In the absence of environmental or competitive stresses that normally limit their distribution plant species such as kudzu or garlic mustard can completely overtake native vegetation. In Midwestern waterways, zebra mussels are seriously diminishing populations of native aquatic species. Meanwhile, the emerald ash borer is slowly munching its way out of the upper Midwest, killing the ash trees of the native deciduous forest.

The Shawnee National Forest has many non-native invasive species that inhabit the forest floor. Some, like autumn olive or multiflora rose are well established and will be nearly impossible to eradicate. They can be seen adjacent to trails throughout the area. The species shown here, garlic mustard, kudzu, Chinese Yam and Nepalese browntop are less



Non-Native Invasive Species



ubiquitous and their spread could yet be stopped.

If I'm a trail user, why should I care?

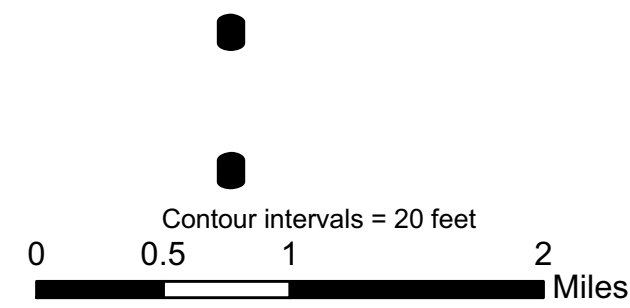
Non-native invasive species pose a threat to public lands all over the country. When they form dense stands they leave areas undesirable for hiking and camping. Their eradication is time consuming and expensive and they have been the cause of restrictions on recreational access to some areas. These species alter native plant and animal communities and eliminate opportunities for anglers, mushroomers, birders, hunters and other nature lovers.

Non-native invasive species are transported by many vectors including wind, water and forest animals. The fact that some species are prevalent along trails suggests that these species regularly use recreationists to hitchhike from one place to another. Research has shown that non-native invasive plants can be carried by boots and clothing, on vehicles, including trailers, and in the hair and manure of stock.

What can I do to limit the spread of non-native invasive species?

Please help your public land managers to stop the spread of non-native invasive species by adopting the following practices:

- 1 Learn to identify non-native invasive species, especially the ones depicted here, and watch for them.
- 1 Report any infestation to the local land manager. For sightings on the Shawnee National Forest call 618-658-1312.
- 1 Check for seeds and plant parts and clean equipment, boots, gear clothing and animals, including dogs, prior to riding or hiking, between trips and, before leaving an infested area.
- 1 Use weed-free feeds beginning a few days prior to, and all during your visit to public land.
- 1 Dispose of seeds in a plastic bag or in a trash can.
- 1 Avoid transporting firewood or other materials that could harbor emerald ash borers or other invasive pests.



Legend Scale 1:48000 03.19.2007

J	Parking Area (Hiker Only)	—	Existing Roads
C	Trailhead (Hiker Only)	—	Streams
C	Trailhead (Equestrian)	—	Lusk Creek ZA
E	Horse Camps	—	Natural Areas
E	Horse High Line Area	—	Wilderness
E	Interim High Line Area	—	National Forest Land
—	Hiker/Equestrian Trails	—	Non National Forest Land
—	Ride Through Only Trail	—	Watershed Boundary
—	Interim Trails	—	
—	Hiker Only Trails	—	

"The Forest Service uses the most current and complete data available. GIS data and product accuracy may vary. They may be developed from sources of differing accuracy, accurate only at certain scales, based on modeling or interpretation, incomplete while being created or revised, etc. Using GIS products for purposes other than those for which they were created, may yield inaccurate or misleading results. The Forest Service reserves the right to correct, update, modify, or replace GIS products without notification. The Forest Service will not be liable for any activity involving the information. Additionally, trails on the map may be removed from use due to resource damage. The USDA Forest Service is an Equal Opportunity provider."

Shawnee

National Forest
Illinois

2007

INTERIM TRAILS MAP
TRAILS DESIGNATION PROJECT

NATIONAL FOREST EQUESTRIAN AND
HIKING TRAILS FOR THE EDDYVILLE AND
HEROD, ILLINOIS VICINITIES.
Hidden Springs Ranger District, Shawnee National Forest
NOT FOR RESALE