



US Army Corps
of Engineers
Portland District

Fiscal Year 2006 NWP Dredging Summary

Maintenance Yards Dredged:

9,237,386 CY – NWP

2,985,235 CY – Other Districts

12,222,621 CY – Total

New Work Yards Dredged:

2,943,735 CY – Columbia River Channel
Improvement Project
(CRCIP)



CRCIP - Phase 2 Contract Quantities

US Army Corps
of Engineers
Portland District

(After Modification)

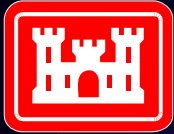
Base Contract

Mouth of the Columbia River	1,027,644 CY
Lower River (Deep Water Site)	238,248 CY

Optional Items

None Awarded

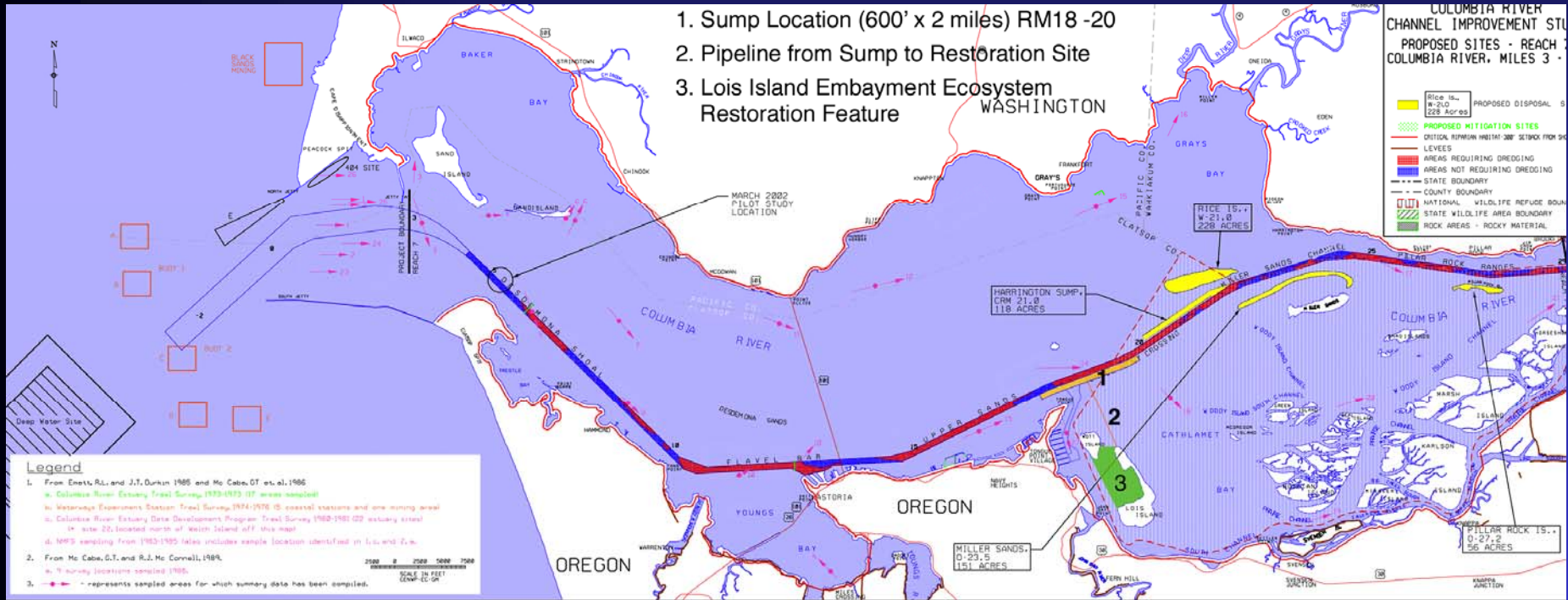
* Total Contract Cost = \$10.5 M (CG and O&M)



US Army Corps
of Engineers
Portland District

CRCI – Phase 2 (RM 21 to RM 27)

Contractor: Bean-Stuvesant LLC “Stuyvesant”



Completed: Dec 2006

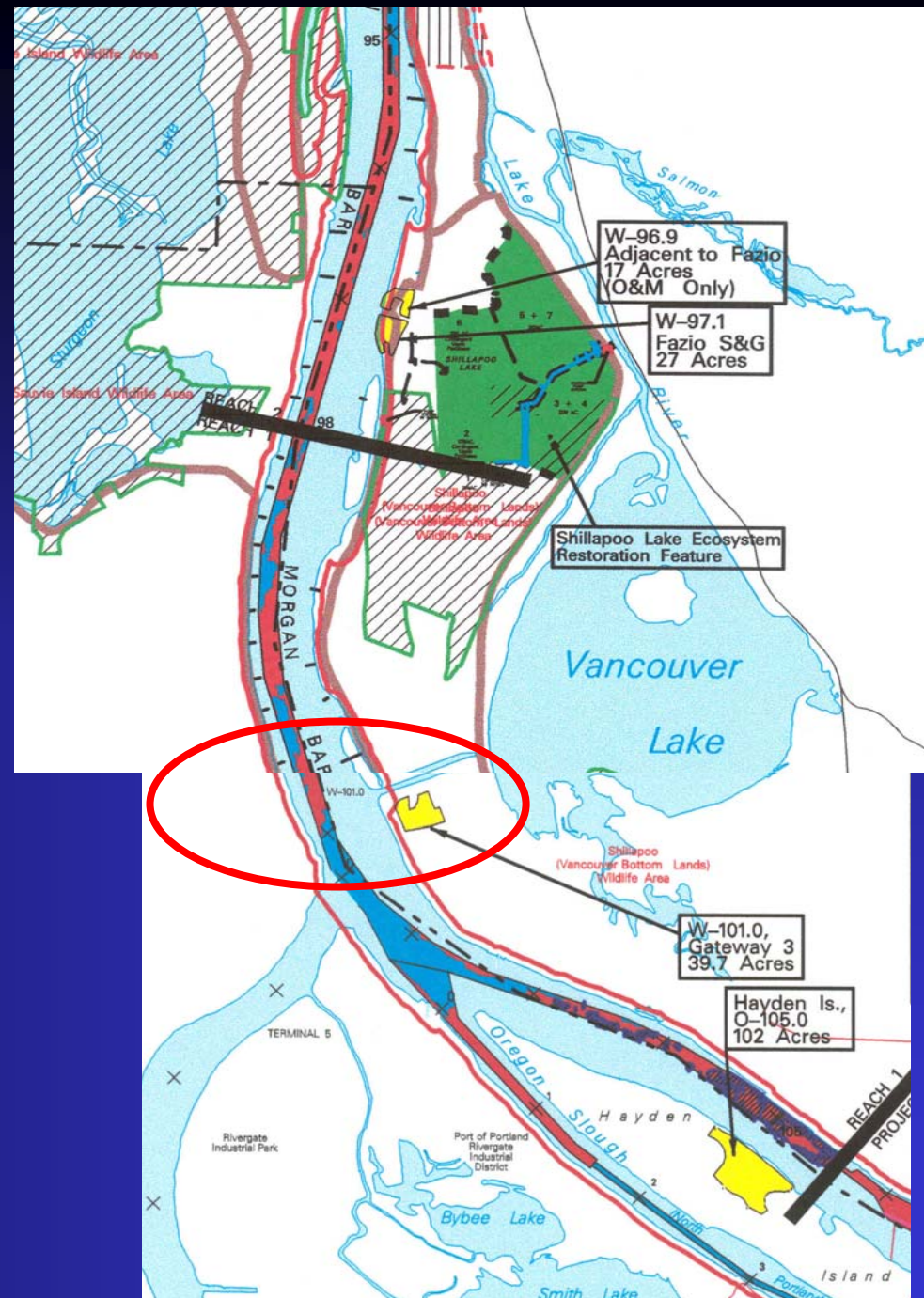


US Army Corps
of Engineers
Portland District

Re-handle operation to on-site CSD “Oregon”

Feb – Mar 2007

Columbia River Miles 91 to 95



Dredge “OREGON”

Contract

Columbia River Maintenance



Mid-June 2006 Start-Up
2,332,707 CY Removed
Cost Reimbursable contract w/Ports
3rd Year of 5



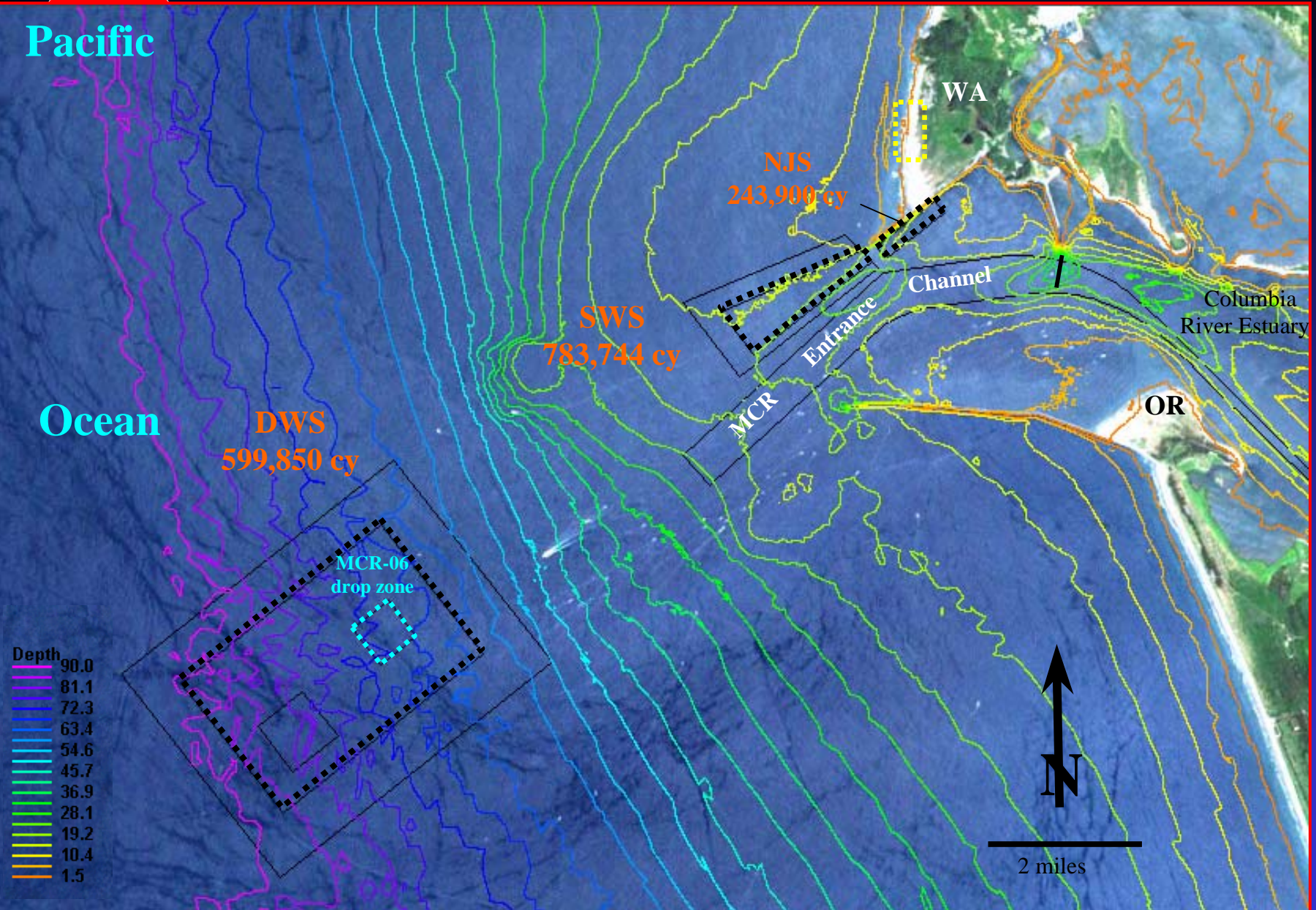
US Army Corps
of Engineers
Portland District

Columbia River at the Mouth



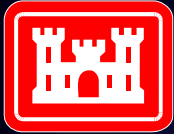
- ESSAYONS 2,118,508 CY
- CONTRACT HOPPER
1,027,644 CY
- Total 3,146,152 CY (FY06)

Mouth of the Columbia River - Bathymetry and 2005 Dredged Material Placement Sites



DWS= Deep Water Site, 102 MPRSA NJ Site = North Jetty disposal site, 404 CWA

SWS= Shallow Water Site, 102 MPRSA (formally Site E, 103 MPRSA)



FY 06 Contracts

US Army Corps
of Engineers
Portland District

- **Port Orford – Winter Hoist**
 - **6,727 CY removed**
 - **Jan - Mar 2006 & Apr - May 2006**

- **N. Coast Clamshell (Baker Bay & Chinook)**
 - **115,846 CY removed**
 - **Sep 2006 to Oct 2006**



FY06 Maintenance Totals

US Army Corps
of Engineers
Portland District

FY 2006					
Project	O&M Cubic Yards Dredged	5 year Ave (2000-2004)	%diff	Project	New Work Cubic Yards Dredged
VTD	40,197	88,816	-55%	CLW-CRCIP	2,943,735
C&LW	4,983,873	6,098,000	-18%		
MCR	3,146,152	4,324,000	-27%		
Coos Bay	566,142	907,000	-38%		
Chetco River	22,149	34,360	-36%		
Yaquina Bay	223,150	187,900	19%		
Siuslaw River	22,307	70,297	-68%		
Rogue River	20,057	42,853	-53%		
Coquille	19,428	28,877	-33%		
Depoe Bay	-	18,306	-100%		
Port Orford	6,727	8,066	-17%		
Umpqua	71,358	135,623	-47%		
TOTAL	9,121,540	11,944,098	-24%		2,943,735
Yaquina	580,439				
Essayons	5,062,468				