

Identification of *Methanococcus jannaschii* Proteins in 2-D Gel Electrophoresis Patterns by Mass Spectrometry

Xiaoli Liang, Carol S. Giometti, Sandra L. Tollaksen, Jerry Hunt
Center for Mechanistic Biology and Biotechnology, Argonne National Laboratory, IL 60439

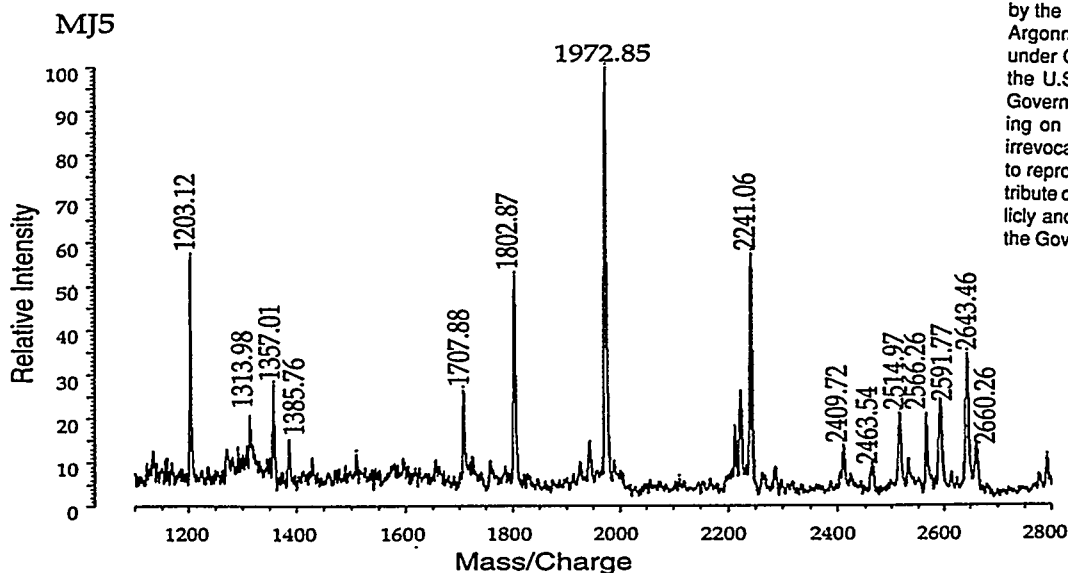
Leslie K. McNeil, Claudia I. Reich, Gary J. Olsen
Department of Microbiology, University of Illinois, Urbana, IL 61801

Introduction

The genome of *Methanococcus jannaschii* has been sequenced completely and has been found to contain approximately 1,770 predicted protein-coding regions. When these coding regions are expressed and how their expression is regulated, however, remain open questions. In this work, mass spectrometry was combined with two-dimensional gel electrophoresis to identify which proteins the genes produce under different growth conditions, and thus investigate the regulation of genes responsible for functions characteristic of this thermophilic representative of the methanogenic Archaea.

Methods

The proteins of *Methanococcus jannaschii* were separated by 2-D gel electrophoresis and detected using Coomassie blue or silver stain. A number of protein spots were chosen at random, excised from the gel, destained by 25 mM ammonium bicarbonate/50% acetonitrile, and digested *in situ* with trypsin. The resulting peptides were then recovered using 50% acetonitrile/5% TFA, and analyzed by Kratos Kompact mass spectrometry. α -Cyano-4-hydroxycinnamic acid was used as the matrix.



The submitted manuscript has been created by the University of Chicago as Operator of Argonne National Laboratory ("Argonne") under Contract No. W-31-109-ENG-38 with the U.S. Department of Energy. The U.S. Government retains for itself, and others acting on its behalf, a paid-up, nonexclusive, irrevocable worldwide license in said article to reproduce, prepare derivative works, distribute copies to the public, and perform publicly and display publicly, by or on behalf of the Government.

Figure 1. MALDI MS spectrum of the tryptic digest of a *M. jannaschii* protein (MJ5).

Results

Different staining methods were compared for their compatibility with mass analysis. A modified silver staining protocol turned out to be the method of choice due to its high protein detection

DISCLAIMER

This report was prepared as an account of work sponsored by an agency of the United States Government. Neither the United States Government nor any agency thereof, nor any of their employees, make any warranty, express or implied, or assumes any legal liability or responsibility for the accuracy, completeness, or usefulness of any information, apparatus, product, or process disclosed, or represents that its use would not infringe privately owned rights. Reference herein to any specific commercial product, process, or service by trade name, trademark, manufacturer, or otherwise does not necessarily constitute or imply its endorsement, recommendation, or favoring by the United States Government or any agency thereof. The views and opinions of authors expressed herein do not necessarily state or reflect those of the United States Government or any agency thereof.

DISCLAIMER

Portions of this document may be illegible in electronic image products. Images are produced from the best available original document.

