

VITAL and HEALTH STATISTICS

DATA FROM THE NATIONAL VITAL STATISTICS SYSTEM

PROPERTY OF THE
PUBLICATIONS BRANCH
EDITORIAL LIBRARY

Homicide in the United States 1950 - 1964

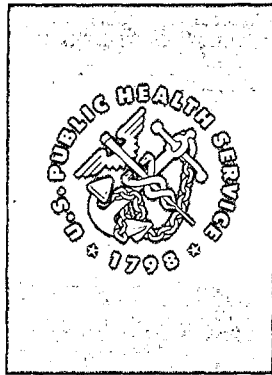
A study of homicide statistics showing trends for 1950-64 and differences for selected periods by age, sex, color, marital status, nativity, and geographic area.

Washington, D. C.

October 1967

U.S. DEPARTMENT OF
HEALTH, EDUCATION, AND WELFARE
John W. Gardner
Secretary

Public Health Service
William H. Stewart
Surgeon General



Public Health Service Publication No. 1000-Series 20-No. 6

For sale by the Superintendent of Documents, U.S. Government Printing Office, Washington, D.C., 20402 - Price 30 cents

NATIONAL CENTER FOR HEALTH STATISTICS

THEODORE D. WOOLSEY, *Acting Director*

PHILIP S. LAWRENCE, Sc.D., *Associate Director*

OSWALD K. SAGEN, Ph.D., *Assistant Director for Health Statistics Development*

WAL T R. SIMMONS, M.A., *Acting Assistant Director for Research and Scientific Development*

ALICE M. WATERHOUSE, M.D., *Medical Consultant*

JAMES E. KELLY, D.D.S., *Dental Advisor*

LOUIS R. STOLCIS, M.A., *Executive Officer*

DONALD GREEN, *Information Officer*

DIVISION OF VITAL STATISTICS

ROBERT D. GROVE, Ph. D., *Director*

ROBERT A. ISRAEL, M.S., *Chief, Mortality Statistics Branch*

ARTHUR A. CAMPBELL, *Chief, Natality Statistics Branch*

CHARLES R. COUNCIL, *Chief, Registration Methods Branch*

PATIENCE LAURIAT, M.S., *Chief, Marriage and Divorce Statistics Branch*

ALICE M. HETZEL, *Chief, Statistical Resources Section*

Public Health Service Publication No. 1000-Series 20-No. 6

Library of Congress Catalog Card Number 67-60078

CONTENTS

	Page
Introduction -----	1
Trends: 1950-64-----	2
Sex and Color-----	2
Age-Adjusted Rates-----	3
Age-Specific Rates -----	4
Means of Committing Homicide-----	5
Selected Data: 1959-61-----	6
Metropolitan-Nonmetropolitan Counties and Geographic Divisions-----	6
Marital Status-----	8
Nativity of White Population-----	8
Summary-----	9
Qualifications of Data-----	9
Cause of Death-----	9
Ranking Causes of Death-----	10
Race -----	10
Rates -----	10
Age-Adjusted Rates-----	10
Population Bases-----	10
Bibliography-----	11
Detailed Tables-----	12

IN THIS REPORT trends of mortality from homicide by age, sex, and color are presented for the years 1950-64 and homicides for the 3 years of 1959-61 are examined by marital status, nativity, and geographic area.

Despite its low rank in overall mortality, homicide remains among the 10 leading causes of death for certain segments of the population. In 1964 it was the seventh greatest cause of death for nonwhite males in the United States. It ranked second for both nonwhite males and nonwhite females aged 15-24 years.

From the turn of the century, when only one homicide per 100,000 population was recorded, the homicide rate rose to a peak of 9.8 in 1933. The rate then declined, reaching 4.5 in 1955. Since 1955, there has been a slight upturn, to 5.1 in 1964.

Nearly half of the homicides in 1964 were among adults 25-44 years old. Homicide is more frequent among males than among females; at ages 15-64 the rate for males was more than three times that for females.

Although infant homicides accounted for only 2.2 percent of the total homicides in 1964, the rate of 5.4 deaths per 100,000 infants under 1 year of age was the highest infanticide rate reported since 1945. The rate for nonwhite infanticide has doubled since 1957.

Age-adjusted homicide rates show little difference between metropolitan and nonmetropolitan counties or by nativity of the white population. By marital status, divorced persons have the highest age-adjusted rate and married, the lowest.

SYMBOLS

Data not available-----	---
Category not applicable-----	...
Quantity zero-----	-
Quantity more than 0 but less than 0.05-----	0.0
Age-specific rates based on fewer than 20 deaths or age-adjusted rates where more than half of the age-specific rates are based on fewer than 20 deaths -----	*

HOMICIDE IN THE UNITED STATES

Robert Langberg, *Division of Vital Statistics*

INTRODUCTION

Nearly 123,000 deaths were attributed to homicide in the years 1950-64. The number has risen almost every year, from 7,942 deaths in 1950 to 9,814 deaths in 1964. The rate has fluctuated between 4.5 and 5.3 per 100,000 persons during this period.

Despite the low overall mortality as compared with accidents or suicides, homicide remains a leading cause of death in certain segments of the population. In 1964 it was the seventh largest cause for nonwhite males in the United States. It ranked second for both nonwhite males and nonwhite females aged 15-24 years (table A).

Over the years, homicide appears to have gone through three stages (fig. 1). From the turn of the century, when only one homicide per 100,000 population was recorded, the rate rose to a peak of 9.8 in 1933. During the next 22 years, the rate dropped (with one upturn in 1945 and 1946) to 4.5 in 1955. Since 1955, there has been a slight upturn, to 5.1 per 100,000 persons in 1964.

Part of this trend may be artificially due to the admission of States to the death-registration area, a process that was not completed for the entire United States until 1933. In a constant death-registration area (before 1933), the homicide rate did not change as much during a decade as the overall rate would indicate. For instance,

Table A. Rank of homicide among 10 leading causes of death, by age, color, and sex: United States, 1964

Age	Total			White		Nonwhite	
	Both sexes	Male	Female	Male	Female	Male	Female
1-4 years-----	(1)	10	9	10	10	(1)	9
5-14 years-----	6	6	7	7	9	6	6
15-24 years-----	3	2	5	4	7	2	2
25-44 years-----	6	5	7	7	(1)	3	5
45-64 years-----	(1)	(1)	(1)	(1)	(1)	7	(1)
65 years and over-----	(1)	(1)	(1)	(1)	(1)	(1)	(1)

¹Not among 10 leading causes of death for the particular age-color-sex group.

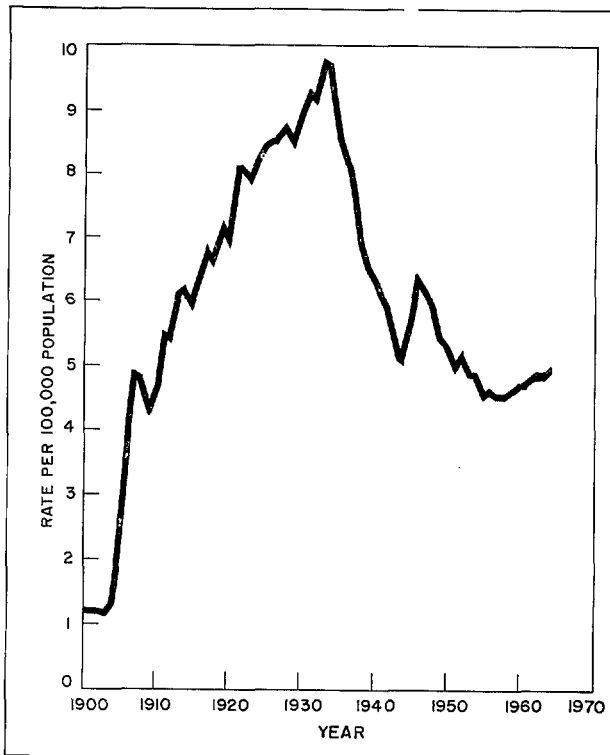


Figure 1. Homicide rates for the death-registration area: 1900-1964.

the homicide rate for 1900 was 1.2 deaths per 100,000 population. By 1910 the rate for the expanded group of registration States was 4.6. However, the rate for those States comprising the

Table B. Homicide rates within groups of death-registration States for specific years: United States, 1900-1940

Death-registration States of:	1900	1910	1920	1930	1940
Expanding area---	Rate per 100,000 population				
1900-----	1.2	4.6	6.8	8.8	6.2
1910-----		3.9	4.2	5.1	2.7
1920-----		4.6	4.9	5.7	3.2
			6.8	8.2	5.4

1900 registration area was only 3.9 in 1910, or 15 percent below the rate for the expanded area (table B). The remaining increase in the rate must have come about by the addition of States to the registration area between 1900 and 1910. Table B shows that this lessening of the change in the homicide rate held for each group of registration States at each decade; therefore the change in rate before 1933 was not so large as figure 1 would indicate.

This report presents trends of mortality from homicide by age, sex, and color for the years 1950 through 1964 and an analysis by marital status, nativity, and geographic area for the combined 3 years of 1959-61. These detailed data are shown in tables 1-7. In addition, some figures are shown in the text tables for selected years or for 1964 only.

TRENDS: 1950-64

The long decline in homicide continued into the midfifties. By 1955-58, homicide had fallen to 4.5 deaths per 100,000 population, the lowest level since 1910. Thereafter the rate began to rise slightly, reaching 5.1 homicides per 100,000 in 1964. During this period, trends differed for certain segments of the population.

Sex and Color

The homicide rate among females has remained essentially unchanged at 2.3 or 2.4 deaths per 100,000 for most years since 1950 (table 3). This annual rate is about one-third as high as that for males, who experienced about 7 or 8 deaths per 100,000 persons during the same period. In the latest years, 1962 through 1964, the rate for males has risen slightly, but not beyond the level that prevailed in the early 1950's.

The homicide rate for the white population leveled off at 2 or 3 deaths per 100,000 population after 1950. The rate for nonwhite persons continued declining through 1961; in 1950 it stood at 28 deaths per 100,000—11 times the average among white persons. By 1961, the rate had fallen to 21, which was still eight times the rate of the white population. In the last 3 years, 1962 through 1964, the rate for nonwhite persons increased again.

The nonwhite population (of which more than 90 percent were Negro) comprised 11 percent of the total population in 1960 and 1950. They accounted for about the same percentage of total deaths, but for more than half of all the homicides occurring in the United States during these years (table C).

Most of the decline in homicides among the nonwhite population occurred to nonwhite males (fig. 2). From 46 deaths per 100,000 in 1950, their rate fell to 34 in 1961, a decrease of 26 percent in 12 years. The level was still more than seven times the national average. Homicide among nonwhite females also decreased about one-fifth, from 11.2 in 1950 to 8.9 in 1961-62.

Age-Adjusted Rates

The magnitude and trend of homicide is partly determined by the changing age structure of the population. If the age profile of the U.S. population had remained constant from 1940 to the present (age-adjusting the death rates using the 1940 population as the standard), the rate would

Table C. Percent nonwhite population of total population, of total deaths, and of homicides: United States, 1950 and 1960

Percent of nonwhite population of:	1960	1950
Population-----	11.4	10.5
Total deaths-----	12.1	12.1
Homicides-----	52.9	55.5

now be 5.7 instead of 5.1—12 percent above its actual value (tables D and 1). Thus, age-adjusting, using the 1940 population, increases the recent rates as compared with the earlier years. It would have increased the rates for all color and sex groups in 1964, that of nonwhite males most of all (26 percent). Furthermore the decline for nonwhite males over the period 1950-61 would have been 16 percent instead of the 26 percent noted above. (Compare figures 2 and 3.)

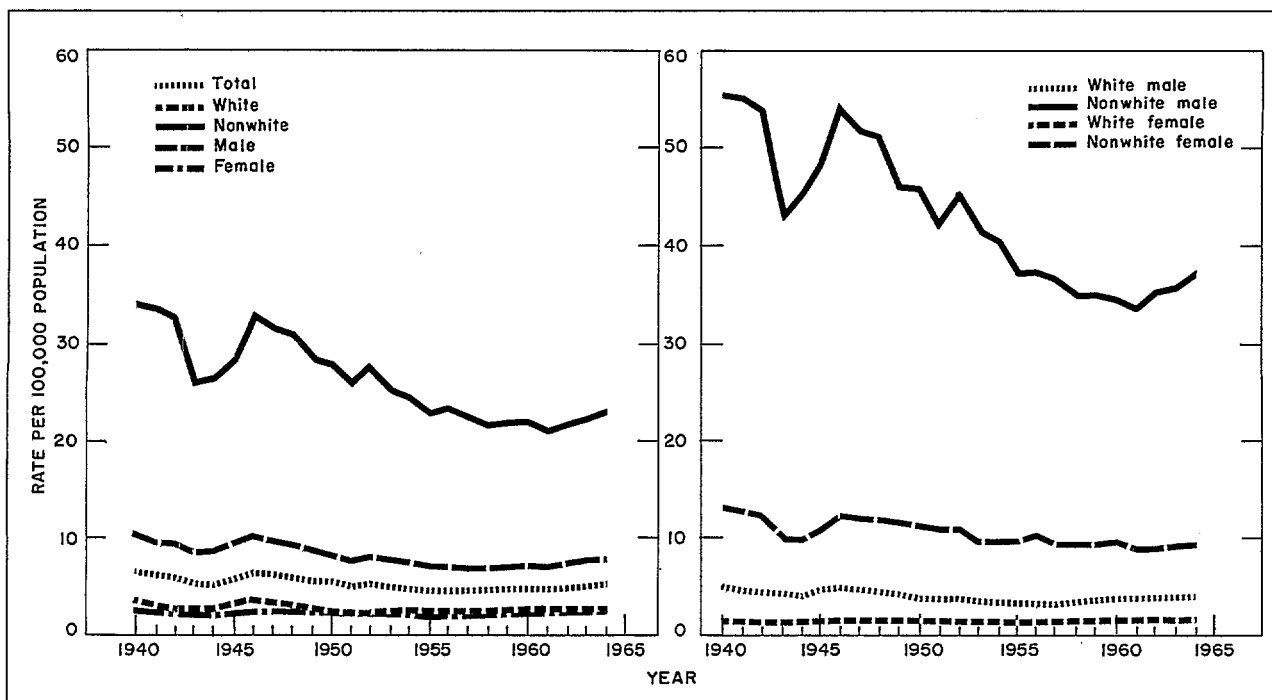


Figure 2. Homicide rates by color and sex: 1940-64.

Table D. Unadjusted and age-adjusted homicide rates, and percent change in rate by adjustment, by color and sex: United States, 1964

Color and sex	Unadjusted	Age-adjusted	Percent change
<u>Total</u>	Rate per 100,000 population		
Both sexes--	5.1	5.7	11.8
Male-----	7.8	8.9	14.1
Female-----	2.5	2.7	8.0
<u>White</u>			
Both sexes--	2.7	3.0	11.1
Male-----	3.9	4.3	10.3
Female-----	1.6	1.7	6.3
<u>Nonwhite</u>			
Both sexes--	22.9	27.9	21.8
Male-----	37.5	47.1	25.6
Female-----	9.2	10.6	15.2

Age-Specific Rates

Adults 25-44 years of age accounted for nearly half of the homicides, with a rate of 9.8 per 100,000 population in 1964. This was the highest rate of adult homicide in 15 years, about 5 percent above the level for 1950, and 21 percent above that for 1958, the year with the lowest rate since 1950. At ages above 45, the rate tapered off to 3 homicides per 100,000 for those 65 years or more.

The sex difference in the homicide rate is greatest at ages 15 and over (table E). Among infants and children, the ratio of male to female homicide rates was below 1.5 in both 1950 and 1964. At ages 15-64, there are more than three times as many homicides per 100,000 for males as for females. Only at the very oldest ages, where few homicides occur, does the ratio again decline.

The differences in homicide by color are apparent at all ages (table E), but again mainly in the middle age groups.

The killing of infants under 1 year of age—infanticide—has been increasing since 1957 (fig.

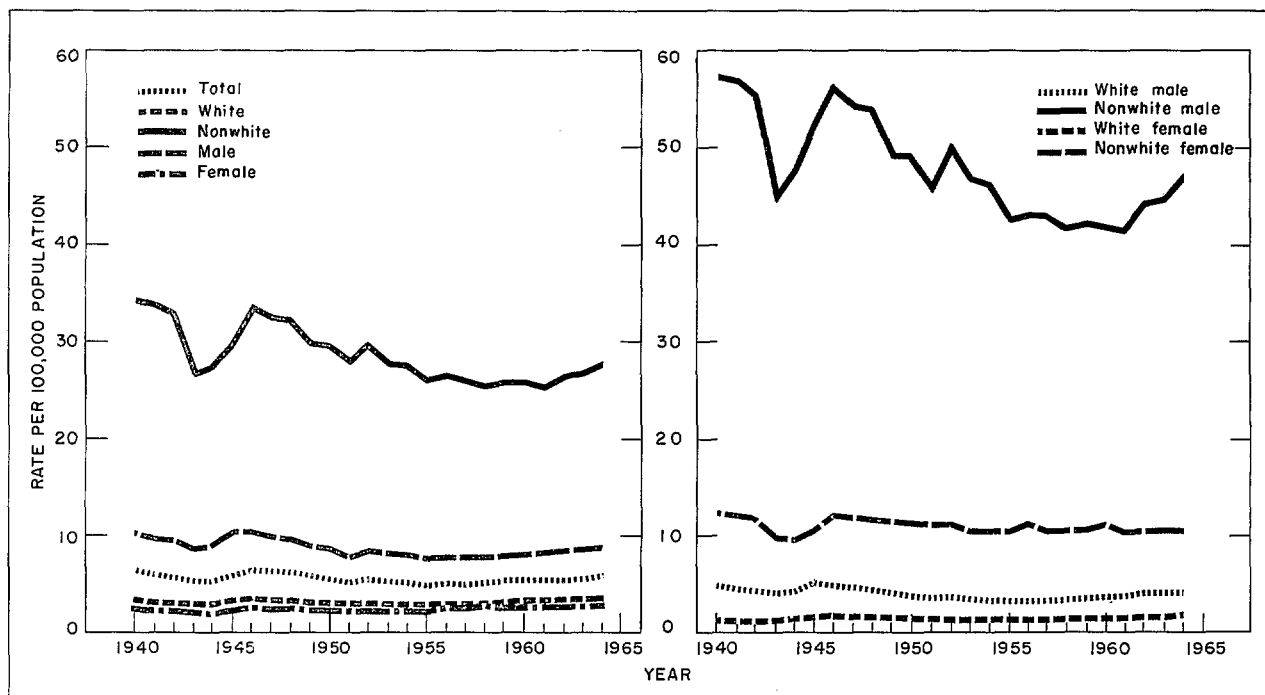


Figure 3. Age-adjusted homicide rates by color and sex: 1940-64.

Table E. Ratio of male to female and of nonwhite to white homicide rates, by age: United States, 1950 and 1964

Age	Male to female		Nonwhite to white	
	1964	1950	1964	1950
	Ratio			
Total-----	3.12	3.38	8.48	10.77
Under 1 year----	1.00	1.07	2.60	1.51
1-4 years-----	1.00	0.71	2.20	2.40
5-14 years-----	1.40	1.20	2.80	3.75
15-24 years-----	3.54	3.10	10.00	14.04
25-34 years-----	3.33	3.44	10.94	17.61
35-44 years-----	3.35	3.63	12.10	11.12
45-54 years-----	3.82	4.30	8.71	8.77
55-64 years-----	3.70	4.64	6.80	6.39
65-74 years-----	2.53	4.08	5.81	4.77
75-84 years-----	2.79	2.86	3.48	3.59
85+ years-----	2.40	1.19	2.04	3.53

4). Although the number of infant homicides accounted for only 2.2 percent of the total homicides in 1964, the rate of 5.4 deaths per 100,000 population was higher than that for all persons aged 55 years and over. The 74 percent increase from 3.1 in 1957 placed infanticide in 1964 at the highest level recorded since 1945.

Infanticide has followed a similar course for both sexes, falling to about 3 per 100,000 persons in 1956 and climbing to 5.4 in 1964. Nonwhite infanticide is more than twice as high as that of white. The rate for nonwhite infants has doubled since 1957, from 5.6 to 11.1. The rate for white infants increased nearly 60 percent, from 2.7 to 4.3 over the same period.

This increase in infanticide may be partly due to more accurate registration of causes of death; however, no tests of the extent of under-reporting of this cause among infants have been made.

Means of Committing Homicide

Over half the homicides were by firearms and explosives. Nearly one-fifth of the deaths were classified in the residual category "assault

by other means," where the methods of homicide are not tabulated separately (table F).

Among the many titles included in this category are homicides from strangulations, fights, and assault by unspecified or other means which cannot be classified in categories E980-E982. Females and white persons had proportionately twice as many homicides in this category as males and nonwhite persons, respectively. On the other hand, nonwhite persons showed almost twice as high a percentage of deaths from cuttings and stabbings as did white victims.

Less than 3 percent of the homicides were attributed to "injury by intervention of police." This category accounted for a higher proportion of the homicides of males than of females and about as large a proportion of white persons as of nonwhite.

The two major methods of assault—by firearms and explosives, and by cutting and piercing instruments—accounted for nearly 80 percent

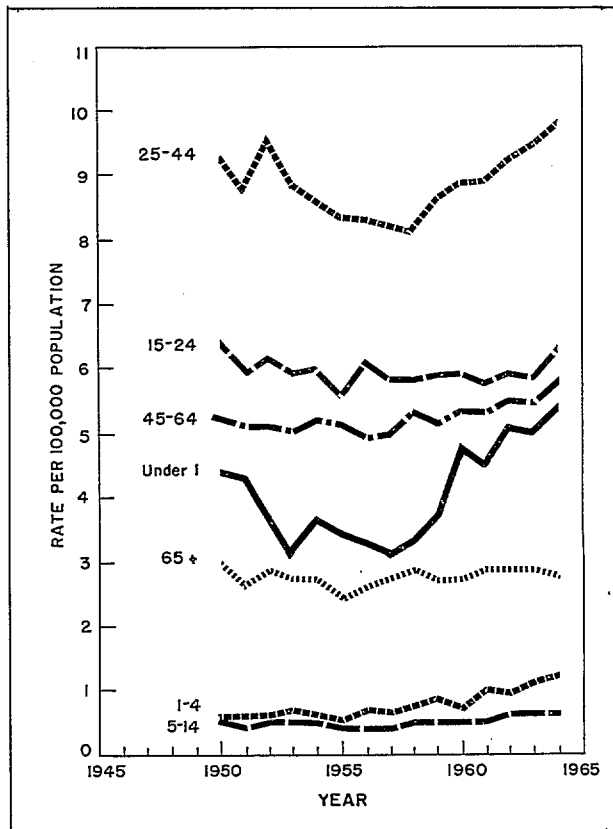


Figure 4. Age-specific homicide rates: 1950-64.

Table F. Percentage distribution of homicides, by means of injury according to color and sex: United States, 1964

Means of injury and ICD number	Total			White			Nonwhite		
	Both sexes	Male	Female	Both sexes	Male	Female	Both sexes	Male	Female
Total-----	100.0	100.0	100.0	100.0	100.0	100.0	100.0	100.0	100.0
Late effect of injury purposely inflicted by another person----- (E964)	0.2	0.1	0.2	0.1	0.1	0.1	0.2	0.2	0.3
Nonaccidental poisoning by another person----- (E980)	0.4	0.3	0.9	0.8	0.6	1.2	0.2	0.1	0.4
Assault by firearm and explosive--- (E981)	55.8	57.2	51.6	56.8	57.9	54.2	54.9	56.6	48.2
Assault by cutting and piercing instruments--- (E982)	21.5	22.9	17.2	14.4	15.4	12.0	27.8	28.9	23.7
Assault by other means----- (E983)	19.2	15.5	30.1	24.9	21.8	32.3	14.0	10.5	27.3
Injury by intervention of police----- (E984)	2.8	3.7	0.2	2.9	4.0	0.2	2.8	3.5	0.1
Execution---- (E985)	0.2	0.2	-	0.2	0.2	-	0.1	0.2	-

of the homicides in 1964. Rates for both were highest at the adult ages of 25-44 years and declined at successively older ages (table G).

In 1964 the rates for firearms and explosives and from cutting and stabbing wounds were greater for the nonwhite population than for the white, 8 and 16 times greater, respectively. For ages 25-44, these rates were 10 times greater for firearms and explosives and more than 20 times greater for cutting and stabbing wounds.

The sex of the victims did not seem to be closely related to these more frequent means of assault. While three times as many men as women died from all intentionally inflicted injuries, about three-and-one-half times as many males died from firearm and explosion wounds, and four times as many from cuttings and stabbings. These ratios are evident for most age groups.

SELECTED DATA: 1959-61

Homicide statistics for the combined years 1959-61 are presented by geographic divisions of the United States, metropolitan and nonmetropolitan counties, nativity, and marital status.

Executions are excluded, but this has little effect, as there were only 146 legal executions in 1959-61, or 0.6 percent of all homicides.

Metropolitan-Nonmetropolitan Counties and Geographic Divisions

Homicide rates are virtually identical in metropolitan and nonmetropolitan counties of the United States (table H). Metropolitan counties are basically urban in character, containing cities of 50,000 persons or more, or are located adjacent to such cities. Nonmetropolitan counties comprise a heterogeneous group, about one-third urban and two-thirds rural. The urban proportion varies by division of the country, with less than 40 percent in parts of the South, to more than 50 percent in the Middle Atlantic, East North Central, West South Central, and Mountain States.

The highest rates of homicide in 1959-61 were in the South (above 8 per 100,000 in the South Atlantic and East South Central States, and 7 in the West South Central Division), and the lowest in the Northeast and North Central States

Table G. Homicide rates by means of injury and age: United States, 1964

Means of injury and ICD number	Age in years											
	Total	Under 1	1-4	5-14	15-24	25-34	35-44	45-54	55-64	65-74	75-84	85+
	Rate per 100,000 population											
Total-----	5.1	5.4	1.2	0.6	6.3	10.5	9.2	6.7	4.6	2.9	2.5	3.1
Late effect of injury purposely inflicted by another person----- (E964)	0.0	-	-	0.0	-	0.0	0.0	0.0	0.0	0.0	-	-
Nonaccidental poisoning by another person----- (E980)	0.0	0.1	0.1	0.0	0.0	0.0	0.0	0.0	-	0.0	0.0	-
Assault by firearm and explosive----- (E981)	2.9	0.2	0.3	0.3	3.7	6.7	5.4	3.8	2.5	1.2	0.7	0.7
Assault by cutting and piercing instruments--- (E982)	1.1	0.1	0.1	0.1	1.6	2.3	2.3	1.4	0.8	0.5	0.4	0.6
Assault by other means----- (E983)	1.0	4.9	0.8	0.2	0.7	1.0	1.3	1.3	1.2	1.2	1.4	1.8
Injury by intervention of police----- (E984)	0.1	-	-	0.0	0.4	0.4	0.2	0.1	0.0	0.1	-	-
Execution----- (E985)	0.0	-	-	-	0.0	0.0	0.0	-	-	-	-	-

Table H. Unadjusted and age-adjusted homicide rates for metropolitan and nonmetropolitan counties, by color and sex: United States, 1959-61 (3-year average)

Color and sex	Unadjusted			Age-adjusted		
	Total	Metropolitan	Non-metropolitan	Total	Metropolitan	Non-metropolitan
	Rate per 100,000 population					
Total-----	4.7	4.8	4.4	5.2	5.2	5.1
<u>White</u>						
Male-----	3.6	3.5	3.7	3.9	3.7	4.1
Female-----	1.5	1.5	1.4	1.5	1.5	1.6
<u>Nonwhite</u>						
Male-----	34.0	35.7	30.9	41.3	41.2	42.1
Female-----	9.4	9.9	8.5	10.7	10.6	10.9

Table J. Unadjusted and age-adjusted homicide rates for geographic divisions, by color and sex: United States, 1959-61 (3-year average)

Geographic division	Unadjusted					Age-adjusted				
	Total	White		Nonwhite		Total	White		Nonwhite	
		Male	Female	Male	Female		Male	Female	Male	Female
	Rate per 100,000 population									
Total--	4.7	3.6	1.5	34.0	9.4	5.2	3.9	1.5	41.3	10.7
New England--	1.4	1.4	1.0	11.1	7.7	1.5	*1.4	*1.0	*11.5	*8.2
Middle Atlantic----	3.0	2.2	1.1	28.7	8.2	3.2	2.4	1.1	31.3	*8.1
East North Central-----	3.6	2.6	1.3	35.2	9.9	3.9	2.8	1.3	40.7	*10.7
West North Central-----	2.6	2.3	1.1	39.5	10.0	2.9	2.4	*1.2	*48.5	*11.4
South Atlantic----	8.2	5.2	2.0	37.6	11.0	9.2	5.5	2.1	47.3	13.0
East South Central-----	8.3	7.0	1.7	36.6	8.8	9.6	7.7	*1.8	50.9	*11.2
West South Central-----	7.3	6.2	1.9	38.9	8.6	8.3	6.9	*2.0	51.7	*10.6
Mountain-----	4.4	4.7	2.3	33.8	9.7	4.9	5.2	*2.4	*42.7	*12.1
Pacific-----	3.8	3.8	1.9	19.5	7.1	4.1	4.1	1.9	*21.5	*7.6

(about 1 in New England and 3 in the Middle Atlantic and East and West North Central States).

Age-adjustment has little effect on the rates or their relationship to one another, except that in the South the adjusted rates are considerably higher than the unadjusted for nonwhite males. In the South Central States, for instance, age-adjustment increased the rates from 38 per 100,000 nonwhite males to 51 (table J).

Marital Status

Homicide rates for persons 15 years of age and over are highest for the divorced and lowest for the widowed. Comparisons of homicide rates among the marital status groups are affected by the differing age compositions of these groups. Age-adjusted rates for 1959-61 (3-year average) by marital status, adjusted to the 1940 population aged 15 and over, showed the lowest rate for

married persons and the next lowest for single. The rates were as follows:

	<i>Rate per 100,000 in specified group</i>	
	<i>Unadjusted</i>	<i>Age-adjusted</i>
Total -----	6.3	6.6
Single-----	7.5	10.7
Married-----	5.3	5.4
Widowed -----	5.1	19.9
Divorced -----	21.8	21.5

Nativity of White Population

Age-adjusted rates of foreign born and native white persons were the same as those for the United States as a whole. The greatest difference

occurred in the West South Central Division, where the age-adjusted rate was about twice as high among those born outside the United States as among the natives, and in the East North Central States, with a rate about 60 percent higher for the foreign born. In the Southeastern area and in New England, the level of homicide for the foreign born was slightly below that of the native population (table 7).

SUMMARY

Homicide decreased from the time that the entire United States was included in the death-registration area in 1933 through the early 1950's. Since 1958, it has leveled off and begun to increase slightly. Differences between the color groups far outweigh differences by sex, with homicide rates for the nonwhite population 8 or 10 times greater than for the white population. Among males, the differences by color are even greater.

Age-adjustment further emphasizes the disparity between the color groups, especially for nonwhite males whose rates are raised about one-quarter. Homicide occurred most frequently among adults aged 25-44 years, for whom the rate is twice the national average. At these ages the color difference is most pronounced, with a 10 to 12 times higher level among the nonwhite population. The ratio of male to female homicide rates is about three to one.

Infant homicide is a separate problem. Color and sex play less of a role here than at any other age. The infant rate is higher than the level of homicide for persons 55 years and over. Since 1958, infanticide has risen by about 60 percent.

Additional data for 1959-61 show little difference for metropolitan-nonmetropolitan counties, or by nativity of the white population. Geographic differences are evident, especially in the South. By marital status, the age-adjusted homicide rate is highest for divorced and lowest for married persons.

QUALIFICATIONS OF DATA

The death statistics presented in this report are based on information obtained from microfilm copies of the original death certificates. Mortality data for the United States (including each State and the District of Columbia, with Alaska added in 1959, and Hawaii in 1960) are restricted to events registered within the United States. Deaths among nonresident aliens in the United States are included. Deaths among Armed Forces overseas and U.S. citizens living abroad are excluded. Data presented for States, geographic divisions, and metropolitan and nonmetropolitan counties are by place of residence. For nonresident aliens the place of residence is considered to be the same as the place of occurrence.

Cause of Death

The number of deaths with the underlying cause attributed to homicide forms the numerator of the rates.

Homicide is a death resulting from an injury purposely inflicted by another person. Intent to kill is not required to classify a death as a homicide. For instance, a death from an injury received during a fight is classified as a homicide even though there may have been no intent to kill. Other examples are the abandonment of newly born infants, or the accidental shooting of a bystander during an armed robbery.

Since 1900, the causes of death have been classified according to seven different revisions of the International Classification of Diseases. Each revision has produced some breaks in the comparability of cause-of-death statistics. However, homicide is among the causes for which the classifications are essentially comparable for all revisions. The Sixth Revision, adopted by the World Health Organization in July 1948, was used for mortality data in the United States from 1949 to 1957. The Seventh Revision, adopted in 1955, has been used since 1958.

In both the Sixth and the Seventh Revisions the homicide category numbers were E964 and E980-E985. They are classified into seven categories: Late effect of injury purposely inflicted by another person (Category E964); Nonaccidental poisoning by another person (E980); Assault, by firearm and explosive (E981), by cutting and piercing instruments (E982), and by other means (E983); Injury by intervention of police (E984); and Execution (E985). The residual category of assaults (E983) combines an assortment of methods of committing homicide (depending on the entry in the death certificate), such as the abandonment of a child, hanging, burns, a blow on the head, or simply "homicide."

The annual and the 1949-51 3-year-average rates include legal executions but the 1959-61 rates do not. However, there were only 146 legal executions in 1959-61, or 0.6 percent of all homicides.

Ranking Causes of Death

The ranking of homicide among the leading causes of death is based on causes included in the table listing 60 selected causes of death, published annually in *Vital Statistics of the United States*.

Race

The category "white" includes in addition to persons reported as white, those reported as Mexican, Puerto Rican, or Cuban and, until 1964, those with race "not stated." In 1964, deaths with race "not stated" were assigned to white or Negro on the assumption that the distribution of "not stated" events by race is the same as that of deaths with race stated, except that no allocation of "not stated" was made to the other nonwhite racial groups.

The category "nonwhite" consists of persons reported as Negro, American Indian, Chinese, and Japanese; other nonwhite groups; and persons of mixed white-nonwhite races. Deaths by race were not available for New Jersey in 1962 and 1963. The item was omitted on the death certificate at the beginning of 1962 and was not reinstated until late 1962. The 1963 statistics by race were also

incomplete because of the continued use of the certificates omitting the race item. Consequently, rates for color for the United States exclude New Jersey in both 1962 and 1963.

Rates

All rates are shown per 100,000 population. In many cases, the rates are shown beyond the last significant figure, not because they can be interpreted with that degree of accuracy, but merely for convenience in computation and publication. Rates based on fewer than 20 deaths are shown with an asterisk to indicate that these figures are subject to large fluctuations. The number "20" is arbitrary and is not set forth as a critical point distinguishing statistically reliable rates from unreliable rates.

Age-Adjusted Rates

The age-adjusted rates presented in this report were computed by the direct method, that is, by applying the age-specific death rates for homicide to the standard population distributed by age. The total population as enumerated in 1940 was selected as the standard. The rates for the total population and for each color-sex group were adjusted separately, using the same standard population. It is important not to compare age-adjusted rates with unadjusted rates.

Age-adjusted rates are shown with an asterisk where more than half of the age-specific death rates are based on fewer than 20 deaths.

Population Bases

Rates are computed on the bases of population statistics made available by the U.S. Bureau of the Census. They include populations present in the specified areas, including the Armed Forces stationed in the area, but exclude the Armed Forces overseas and persons living abroad.

Populations for 1950 and 1960 are enumerated as of April 1. For all other years the population estimated as of July 1 was used. The rates for the years 1951 through 1959 are based on the final intercensal population estimates (P-25, No.

310) and, as a result, may differ slightly from rates published earlier which were based on provisional population estimates. Population estimates by color for 1962 and 1963 exclude New Jersey.

The 3-year average annual rates were computed using the number of deaths occurring for the 3 years and the decennial enumerated populations, multiplied by 3.

Some of the 1960 population data published by the Bureau of the Census was obtained on a complete-count basis in the 100-percent enumeration, and some on a 25-percent sample enumeration. There are differences between these two sets of published figures, with the greatest differences in the older ages. For the total United States, the largest percent differences for sex, color, and 5-year-age groups are for white and nonwhite males 85 years of age and over.

As a general rule, the population series based on 100-percent enumeration are used in computing vital statistics rates. Exceptions are made where populations are required for characteristics which were not covered in the complete count. In this report, death rates for homicide by marital status and nativity are exceptions; they are based on populations from the 25-percent sample. As a result, the rates appearing in table 5 for all marital status groups combined are slightly different from those in table 4. The only rates which can be compared directly from these

two tables are the total U.S. rates for the group 85 years and over by color and sex. For each of the nine categories, the rate in table 5 is higher (from 20 to 59 percent) than the corresponding rate in table 4.

BIBLIOGRAPHY

Federal Bureau of Investigation: *Uniform Crime Reports*, annual publication. Washington. U.S. Government Printing Office.

National Center for Health Statistics: Comparability of mortality statistics for the Sixth and Seventh Revisions, United States, 1958, by M.M. Faust and A.B. Dolman. *Vital Statistics--Special Reports*, Vol. 51, No. 4. Public Health Service. Washington, D.C., Mar. 1965.

National Center for Health Statistics: *Vital Statistics of the United States*, annual publication. Public Health Service. Washington. U.S. Government Printing Office.

National Office of Vital Statistics: Death rates by age, race, and sex, United States, 1900-1953, homicide. *Vital Statistics--Special Reports*, Vol. 43, No. 31. Public Health Service. Washington, D.C., Aug. 1956.

Pettigrew, T.F., and Spier, R.B.: The ecological structure of Negro homicide. *Am.J.Sociol.* 67(6):621-629, May 1962.

Porterfield, A.L.: Traffic fatalities, suicide, and homicide. *Am.Sociol.R.* 25(6):897-901, Dec. 1960.

U.S. Bureau of the Census: *U.S. Census of Population, 1960, General Population Characteristics, United States Summary*. Final Report PC(1)-1B. Washington. U.S. Government Printing Office, 1961.

U.S. Bureau of the Census: *Vital Statistics Rates in the United States, 1900-1940*, by F.E. Linder and R.D. Grove. Washington. U.S. Government Printing Office, 1943.



DETAILED TABLES

		Page
Table 1.	Age-adjusted homicide rates, by color and sex: United States, 1950-64-----	13
2.	Age-adjusted homicide rates, by color and sex: United States, geographic division, and State, 1949-51 and 1959-61 (3-year averages)-----	14
3.	Homicide rates, by age, color, and sex: United States, 1950-64-----	18
4.	Homicide rates, by age, color, and sex: United States, geographic division, and State, 1959-61 (3-year average)-----	21
5.	Age-specific and age-adjusted homicide rates, by color, sex, and marital status: United States, 1959-61 (3-year average)-----	30
6.	Homicide rates for metropolitan and nonmetropolitan counties, by color and sex: United States and geographic division, 1959-61 (3-year average)-----	32
7.	Age-adjusted homicide rates, by color, nativity of the white population, and sex: United States and geographic division, 1959-61 (3-year average)-----	33

Table 1. Age-adjusted homicide rates, by color and sex: United States, 1950-64

Year	Total			White			Nonwhite		
	Both sexes	Male	Female	Both sexes	Male	Female	Both sexes	Male	Female
	Rate per 100,000 population								
1964-----	5.7	8.9	2.7	3.0	4.3	1.7	27.9	47.1	10.6
1963-----	5.5	8.5	2.6	2.9	4.2	1.6	26.7	44.8	10.5
1962-----	5.4	8.3	2.6	2.9	4.1	1.7	26.5	44.4	10.3
1961-----	5.2	8.0	2.6	2.7	3.9	1.6	25.0	41.5	10.1
1960-----	5.2	7.9	2.6	2.7	3.9	1.5	25.8	41.9	11.2
1959-----	5.1	7.7	2.5	2.6	3.8	1.5	25.8	42.3	*10.7
1958-----	4.9	7.5	2.5	2.5	3.6	1.4	25.3	41.6	10.5
1957-----	4.9	7.6	2.4	2.4	3.5	1.4	25.9	43.1	10.3
1956-----	5.0	7.6	2.4	2.4	3.5	1.3	26.5	43.2	11.3
1955-----	4.8	7.5	2.3	2.4	3.5	1.3	25.7	42.6	*10.3
1954-----	5.1	8.0	2.4	2.5	3.6	1.4	27.4	46.2	*10.3
1953-----	5.1	8.0	2.3	2.5	3.6	1.3	27.4	46.5	*10.2
1952-----	5.4	8.5	2.4	2.6	3.8	1.3	29.9	50.4	11.3
1951-----	5.0	7.8	2.4	2.5	3.6	1.4	27.5	45.3	11.1
1950-----	5.4	8.4	2.5	2.6	3.9	1.4	29.5	49.1	*11.5

Table 2. Age-adjusted homicide rates, by color and sex: United States, geographic division, and State, 1949-51 and 1959-61 (3-year averages)

Area	Total			White			Nonwhite		
	Both sexes	Male	Female	Both sexes	Male	Female	Both sexes	Male	Female
Rate per 100,000 population									
UNITED STATES									
1949-51-----	5.3	8.3	2.4	2.6	3.9	1.4	29.0	47.8	11.4
1959-61-----	5.2	7.8	2.6	2.7	3.9	1.5	25.2	41.3	10.7
NEW ENGLAND									
1949-51-----	1.3	*1.6	*1.0	1.1	1.4	*0.8	*11.0	*12.2	*9.8
1959-61-----	1.5	1.7	*1.2	1.2	*1.4	*1.0	*9.9	*11.5	*8.2
Maine									
1949-51-----	*1.8	*2.4	*1.2	(1)	(1)	(1)	(1)	(1)	(1)
1959-61-----	*1.8	*2.0	*1.6	*1.8	*2.0	*1.7	0.0	0.0	0.0
New Hampshire									
1949-51-----	*1.2	*0.8	*1.4	(1)	(1)	(1)	(1)	(1)	(1)
1959-61-----	*1.2	*1.5	0.9	*1.2	*1.5	0.9	0.0	0.0	0.0
Vermont									
1949-51-----	*0.6	*0.7	*0.4	(1)	(1)	(1)	(1)	(1)	(1)
1959-61-----	0.9	1.3	0.7	0.9	1.3	0.7	0.0	0.0	0.0
Massachusetts									
1949-51-----	*1.1	*1.5	*0.8	*1.0	*1.3	*0.6	*9.2	*11.6	*6.7
1959-61-----	1.3	*1.6	*1.0	*1.1	*1.3	*0.9	*7.8	*10.4	5.3
Rhode Island									
1949-51-----	*1.0	*0.8	*1.0	(1)	(1)	(1)	(1)	(1)	(1)
1959-61-----	*1.4	*1.6	*1.1	*1.3	*1.5	*1.0	7.8	7.9	7.7
Connecticut									
1949-51-----	*1.7	*2.0	*1.3	*1.2	*1.6	*0.9	*15.5	*15.6	*15.2
1959-61-----	*1.7	*2.0	*1.4	*1.1	*1.4	*0.9	*13.4	*14.7	*12.3
MIDDLE ATLANTIC									
1949-51-----	2.7	4.0	1.4	1.5	2.0	0.9	19.1	*31.3	*8.2
1959-61-----	3.2	4.8	1.7	1.7	2.4	1.1	18.8	31.3	*8.1
New York									
1949-51-----	2.7	4.1	*1.4	1.4	2.1	*0.8	*18.7	*32.2	*7.3
1959-61-----	3.7	5.9	1.7	2.0	3.0	*1.0	19.6	33.9	*7.5
New Jersey									
1949-51-----	2.7	*3.8	*1.6	*1.6	*2.2	*1.1	*16.2	*24.5	*8.3
1959-61-----	2.7	*3.7	*1.7	*1.4	*1.8	*1.0	*15.6	*23.7	*8.2
Pennsylvania									
1949-51-----	2.7	3.8	*1.6	1.4	1.9	*1.0	*21.0	*33.7	*9.3
1959-61-----	2.8	3.9	1.8	1.4	1.7	*1.1	*19.3	*31.1	*8.9
EAST NORTH CENTRAL									
1949-51-----	3.8	5.6	2.1	1.9	2.6	1.2	31.1	49.2	*13.4
1959-61-----	3.9	5.9	2.1	2.0	2.8	1.3	25.1	40.7	*10.7
Ohio									
1949-51-----	4.2	6.1	*2.2	2.0	*2.6	*1.3	*33.7	*53.4	*14.4
1959-61-----	3.7	5.3	*2.3	1.9	*2.5	*1.4	*24.1	*37.7	*11.7
Indiana									
1949-51-----	*3.7	*5.1	*2.3	*2.2	*2.9	*1.4	*33.7	*50.3	*17.7
1959-61-----	3.5	*5.5	*1.6	*2.0	*2.9	*1.1	27.8	*48.2	*9.3
Illinois									
1949-51-----	4.7	7.3	*2.1	2.1	3.1	*1.2	*32.5	*54.3	*12.2
1959-61-----	5.2	8.2	2.3	2.5	3.7	*1.3	*28.2	47.7	*10.7

See footnote at end of table.

Table 2. Age-adjusted homicide rates, by color and sex: United States, geographic division, and State, 1949-51 and 1959-61 (3-year averages)—Con.

Area	Total			White			Nonwhite		
	Both sexes	Male	Female	Both sexes	Male	Female	Both sexes	Male	Female
Rate per 100,000 population									
EAST NORTH CENTRAL—Con:									
Michigan									
1949-51-----	3.7	*5.2	*2.3	*1.8	*2.3	*1.4	*26.7	*39.7	*13.1
1959-61-----	3.9	5.6	*2.2	2.0	2.7	*1.3	21.8	33.7	*10.5
Wisconsin									
1949-51-----	*1.2	*1.6	*0.7	(1)	(1)	(1)	(1)	(1)	(1)
1959-61-----	*1.7	*2.0	*1.4	*1.4	*1.5	*1.2	*15.6	*21.3	*9.8
WEST NORTH CENTRAL									
1949-51-----	2.7	4.0	1.5	1.6	2.2	*1.0	*33.2	*52.8	*14.8
1959-61-----	2.9	4.2	*1.6	1.8	2.4	*1.2	*29.0	*48.5	*11.4
Minnesota									
1949-51-----	*1.2	*1.8	*0.7	(1)	(1)	(1)	(1)	(1)	(1)
1959-61-----	*1.4	*2.1	*0.8	*1.2	*1.8	*0.6	17.7	23.4	11.4
Iowa									
1949-51-----	*1.2	*1.5	*1.0	(1)	(1)	(1)	(1)	(1)	(1)
1959-61-----	*1.3	*1.4	*1.1	*1.1	*1.3	*1.0	10.4	17.5	3.8
Missouri									
1949-51-----	5.5	8.6	*2.7	2.7	4.0	*1.5	*38.9	*64.1	*16.3
1959-61-----	5.7	8.8	*2.7	3.0	4.3	*1.7	*32.8	*57.1	*12.0
North Dakota									
1949-51-----	*0.6	*0.7	*0.5	(1)	(1)	(1)	(1)	(1)	(1)
1959-61-----	*1.4	*1.9	0.8	*0.8	*1.2	0.4	30.4	40.6	21.1
South Dakota									
1949-51-----	*1.5	*1.3	*1.7	(1)	(1)	(1)	(1)	(1)	(1)
1959-61-----	*2.2	*2.5	*1.9	*1.4	*1.5	*1.2	*25.4	35.3	15.4
Nebraska									
1949-51-----	*1.9	*2.7	*1.3	(1)	(1)	(1)	(1)	(1)	(1)
1959-61-----	*2.5	*3.7	*1.4	*1.4	*1.8	*1.1	*42.2	*74.3	10.4
Kansas									
1949-51-----	*2.8	*4.3	*1.4	*1.7	*2.5	*1.0	*28.1	*46.8	*9.6
1959-61-----	*2.8	3.6	*2.0	*1.9	*2.2	*1.7	*20.3	*32.2	8.1
SOUTH ATLANTIC									
1949-51-----	10.2	16.3	4.3	4.1	6.3	2.0	30.4	50.8	*11.6
1959-61-----	9.2	14.1	4.5	3.8	5.5	2.1	29.3	47.3	13.0
Delaware									
1949-51-----	*6.9	*12.0	*2.1	*2.0	*3.7	*0.5	*38.0	*63.1	*12.0
1959-61-----	*4.9	*6.6	*3.3	*2.2	*2.7	*1.6	*23.2	*32.5	13.9
Maryland									
1949-51-----	*6.3	*9.9	*2.7	*2.3	*3.3	*1.4	*26.0	*43.0	*9.4
1959-61-----	*5.6	*8.0	*3.2	*2.4	*3.2	*1.7	*21.6	33.3	*10.5
District of Columbia									
1949-51-----	*9.8	*16.7	*3.8	*3.7	*5.7	*2.0	*20.9	*36.3	*6.9
1959-61-----	11.2	16.9	*6.1	*4.1	*6.2	*2.4	17.0	26.2	*8.8
Virginia									
1949-51-----	9.2	14.1	*4.2	*4.1	*6.1	*2.2	*27.9	*44.6	*11.3
1959-61-----	7.5	11.0	*4.0	*3.8	*5.2	*2.4	*23.0	*36.1	*10.6
West Virginia									
1949-51-----	*6.4	*10.1	*2.7	*4.4	*6.9	*2.0	*37.9	*63.1	*13.6
1959-61-----	*4.4	*6.8	*2.1	*3.7	*5.9	*1.6	*19.7	*29.0	12.1

See footnote at end of table.

Table 2. Age-adjusted homicide rates, by color and sex: United States, geographic division, and State, 1949-51 and 1959-61 (3-year averages)—Con.

Area	Total			White			Nonwhite		
	Both sexes	Male	Female	Both sexes	Male	Female	Both sexes	Male	Female
SOUTH ATLANTIC—Con. Rate per 100,000 population									
North Carolina									
1949-51-----	9.6	*15.7	*3.6	*3.8	*6.0	*1.7	*27.3	*46.5	*9.3
1959-61-----	10.2	16.5	*4.2	4.1	6.6	*1.7	31.5	52.4	12.8
South Carolina									
1949-51-----	*12.2	*20.2	*4.7	*5.7	*9.3	*2.3	*24.3	*41.7	*8.9
1959-61-----	10.6	16.5	*4.9	4.4	*6.6	*2.3	24.9	41.4	*10.6
Georgia									
1949-51-----	14.5	23.6	*6.1	*5.1	*8.0	*2.2	*37.7	*64.5	*14.8
1959-61-----	12.1	19.1	*5.6	4.6	7.0	*2.4	*33.9	*57.1	14.2
Florida									
1949-51-----	12.2	18.9	*5.9	*4.3	*6.3	*2.5	*39.8	*64.3	*17.3
1959-61-----	10.9	16.2	5.8	3.9	5.3	*2.6	43.4	*67.8	*20.2
EAST SOUTH CENTRAL									
1949-51-----	12.1	20.0	4.4	5.5	9.2	*1.9	34.9	60.3	*12.6
1959-61-----	9.6	15.8	3.7	4.7	7.7	*1.8	29.3	50.9	*11.2
Kentucky									
1949-51-----	9.0	15.5	*2.6	6.8	11.6	*2.1	*37.1	*66.8	*9.4
1959-61-----	7.7	12.7	*2.9	5.7	*9.7	*1.9	34.7	54.6	*16.4
Tennessee									
1949-51-----	10.0	*16.7	*3.6	*5.1	*8.5	*1.8	*35.6	*61.5	*12.6
1959-61-----	8.1	13.3	3.2	4.2	6.9	*1.6	30.6	52.9	11.9
Alabama									
1949-51-----	14.5	*23.8	*5.8	*5.1	*8.2	*2.0	*36.5	*62.7	*14.0
1959-61-----	11.8	*19.5	*4.6	4.8	7.9	*1.9	*30.9	*54.4	*11.5
Mississippi									
1949-51-----	16.0	26.5	*6.3	*4.4	*7.1	*1.8	*32.2	*55.2	*12.2
1959-61-----	11.3	*18.6	*4.5	*3.5	*5.3	*1.7	*24.7	43.5	*9.1
WEST SOUTH CENTRAL									
1949-51-----	9.3	15.2	3.4	4.8	7.8	*1.8	32.6	56.0	*11.7
1959-61-----	8.3	13.4	3.4	4.4	6.9	*2.0	29.8	51.7	*10.6
Arkansas									
1949-51-----	*8.6	*14.4	*3.1	*3.8	*6.7	*1.0	*26.7	*45.8	*10.2
1959-61-----	*8.2	13.5	*3.3	*3.8	*6.1	*1.6	27.9	49.4	*10.4
Louisiana									
1949-51-----	9.8	16.1	*4.0	*3.2	*5.1	*1.3	*24.9	*42.5	*9.4
1959-61-----	9.3	14.9	*4.1	3.3	*4.9	*1.9	*23.9	41.1	*9.3
Oklahoma									
1949-51-----	*5.2	*8.5	*1.9	*3.2	*5.1	*1.4	*27.2	*48.7	*7.8
1959-61-----	*5.6	*8.9	*2.4	*3.7	*5.7	*1.7	*26.3	*45.6	9.7
Texas									
1949-51-----	10.4	17.0	*3.8	5.8	9.5	*2.1	*42.4	*72.2	*14.9
1959-61-----	8.6	13.9	*3.4	5.0	7.8	*2.2	35.4	*61.6	*11.8
MOUNTAIN									
1949-51-----	4.1	6.0	*2.2	3.3	*4.8	*1.9	*22.4	*32.6	*10.8
1959-61-----	4.9	7.0	*2.9	3.8	5.2	*2.4	*27.8	*42.7	*12.1
Montana									
1949-51-----	*3.3	*4.1	*2.4	(1)	(1)	(1)	(1)	(1)	(1)
1959-61-----	*3.9	*5.4	*2.4	*3.3	*4.4	*2.3	*21.6	*34.2	8.0

See footnote at end of table.

Table 2. Age-adjusted homicide rates, by color and sex: United States, geographic division, and State, 1949-51 and 1959-61 (3-year averages)—Con.

Area	Total			White			Nonwhite		
	Both sexes	Male	Female	Both sexes	Male	Female	Both sexes	Male	Female
MOUNTAIN—Con. Rate per 100,000 population									
Idaho									
1949-51-----	*2.2	*3.3	*1.1	(1)	(1)	(1)	(1)	(1)	(1)
1959-61-----	*2.3	*2.5	*2.1	*2.0	*1.9	*2.0	26.2	40.8	8.5
Wyoming									
1949-51-----	*3.1	*4.2	*1.7	(1)	(1)	(1)	(1)	(1)	(1)
1959-61-----	*4.4	*6.3	*2.5	*3.4	*4.5	*2.3	51.6	90.6	11.0
Colorado									
1949-51-----	*3.6	*5.4	*1.8	(1)	(1)	(1)	(1)	(1)	(1)
1959-61-----	*4.7	*6.7	*2.8	*3.8	*5.2	*2.4	*33.0	*51.3	14.1
New Mexico									
1949-51-----	*6.8	*10.2	*3.3	*6.0	*9.0	*3.0	*18.3	*27.2	*8.5
1959-61-----	*6.6	*9.4	*3.8	*5.8	*8.3	*3.3	*17.4	24.9	9.1
Arizona									
1949-51-----	*6.2	*9.2	*3.2	*3.7	*5.3	*2.1	*25.7	*38.8	*11.0
1959-61-----	*7.1	*10.6	*3.5	4.8	*7.1	*2.4	*31.0	*47.2	*14.0
Utah									
1949-51-----	*1.8	*2.4	*1.2	(1)	(1)	(1)	(1)	(1)	(1)
1959-61-----	*1.9	*2.5	*1.3	*1.7	*2.2	*1.3	9.7	18.3	0.0
Nevada									
1949-51-----	*9.6	*12.9	*6.4	(1)	(1)	(1)	(1)	(1)	(1)
1959-61-----	*8.6	*11.5	*5.4	*6.4	*7.8	*4.7	*40.5	*62.0	16.8
PACIFIC									
1949-51-----	3.8	5.4	2.2	2.9	4.1	*1.7	*17.7	*25.1	*8.8
1959-61-----	4.1	5.7	2.5	3.0	4.1	1.9	*14.7	*21.5	*7.6
Washington									
1949-51-----	*2.8	*3.9	*1.7	*2.3	*3.1	*1.4	*20.6	*26.4	*11.6
1959-61-----	*2.7	*3.9	*1.6	*2.2	*3.0	*1.3	*18.0	*25.4	8.4
Oregon									
1949-51-----	*2.5	*3.8	*1.1	(1)	(1)	(1)	(1)	(1)	(1)
1959-61-----	*2.6	3.8	*1.5	*2.0	*2.7	*1.3	30.8	52.2	8.1
California									
1949-51-----	4.2	6.0	*2.4	3.2	4.5	*1.9	*17.5	*24.9	*8.8
1959-61-----	4.4	6.2	2.7	3.3	4.4	2.1	*17.7	*26.2	*8.9
Alaska									
1949-51-----	9.2	*11.1	6.7	*7.2	*9.6	3.8	19.1	19.6	18.5
1959-61-----									
Hawaii									
1949-51-----	*3.0	*3.9	*1.9	1.9	2.6	0.9	*3.5	*4.4	*2.3
1959-61-----									

¹Rate not computed where the 1950 population for nonwhite races formed less than 10 percent of the total population and numbered less than 50,000 (for 1949-51 rates only).

Table 3. Homicide rates, by age, color, and sex: United States, 1950-64

Color, sex, and year	All ages	Under 1 year	1-4 years	5-14 years	15-24 years	25-34 years	35-44 years	45-54 years	55-64 years	65-74 years	75-84 years	85+ years
<u>Total, both sexes</u>	Rate per 100,000 population											
1964-----	5.1	5.4	1.2	0.6	6.3	10.5	9.2	6.7	4.6	2.9	2.5	3.1
1963-----	4.9	5.0	1.1	0.6	5.8	10.2	8.8	6.2	4.5	2.9	2.8	2.4
1962-----	4.8	5.1	0.9	0.6	5.9	9.9	8.6	6.3	4.5	3.1	2.6	3.4
1961-----	4.7	4.6	1.0	0.5	5.7	9.6	8.3	6.3	3.9	2.9	2.9	2.8
1960-----	4.7	4.8	0.7	0.5	5.9	9.7	8.1	6.2	4.2	2.8	2.4	2.4
1959-----	4.6	3.7	0.9	0.5	5.9	9.3	8.0	5.9	4.0	2.9	2.5	2.6
1958-----	4.5	3.3	0.7	0.5	5.8	8.7	7.4	6.3	4.0	2.9	2.6	3.3
1957-----	4.5	3.1	0.6	0.4	5.8	9.0	7.5	5.8	4.0	3.0	2.2	*1.4
1956-----	4.6	3.3	0.7	0.4	6.1	9.0	7.6	5.6	4.1	2.8	2.2	*2.3
1955-----	4.5	3.4	0.5	0.4	5.5	8.8	7.7	5.9	4.0	2.4	2.5	3.0
1954-----	4.8	3.7	0.6	0.5	6.0	9.1	8.2	6.5	3.5	2.8	2.7	*1.9
1953-----	4.8	3.1	0.7	0.5	5.9	9.0	8.7	6.1	3.4	2.8	2.3	3.6
1952-----	5.2	3.7	0.6	0.5	6.2	10.0	9.1	6.1	3.8	3.0	2.7	*2.0
1951-----	4.9	4.3	0.6	0.4	5.9	9.1	8.2	5.9	3.9	2.7	2.4	*2.1
1950-----	5.3	4.4	0.6	0.5	6.3	9.9	8.8	6.1	4.0	3.2	2.6	*2.3
<u>Total, male</u>												
1964-----	7.8	5.4	1.2	0.7	9.9	16.3	14.5	10.8	7.5	4.3	3.9	*4.8
1963-----	7.5	5.0	1.2	0.6	9.0	16.1	13.8	9.8	7.4	4.5	4.0	*3.6
1962-----	7.3	5.5	0.9	0.5	9.0	15.5	13.0	10.4	7.4	4.7	3.7	*3.2
1961-----	7.0	4.7	1.0	0.6	8.8	14.7	12.5	9.9	6.4	4.9	3.8	*4.3
1960-----	7.1	4.7	0.7	0.5	9.1	14.9	12.3	9.6	6.6	4.6	3.7	*3.6
1959-----	7.0	4.2	0.9	0.6	9.0	13.9	12.2	9.4	6.6	4.6	3.9	*3.4
1958-----	6.8	3.4	0.7	0.6	8.8	13.7	11.2	9.7	6.5	4.7	3.2	*5.2
1957-----	6.8	3.3	0.5	0.5	8.9	14.1	11.4	9.2	6.3	5.0	3.4	*1.8
1956-----	6.9	3.1	0.7	0.6	9.4	13.9	11.8	8.5	6.5	4.4	3.3	*4.0
1955-----	6.9	3.7	0.5	0.5	8.5	13.8	12.0	9.2	6.6	4.0	3.8	*4.4
1954-----	7.4	4.0	0.6	0.6	9.3	14.5	12.9	10.1	5.9	4.4	4.1	*2.6
1953-----	7.5	3.1	0.7	0.5	9.6	14.0	13.8	9.8	5.5	4.4	3.9	*3.1
1952-----	8.1	3.9	0.8	0.5	9.9	15.8	14.3	9.8	6.2	5.1	4.6	*3.3
1951-----	7.5	3.9	0.6	0.4	9.0	14.2	13.0	9.4	6.5	4.4	3.5	*3.1
1950-----	8.1	4.5	0.5	0.6	9.6	15.5	13.8	9.9	6.5	5.3	4.0	*2.5
<u>Total, female</u>												
1964-----	2.5	5.4	1.2	0.5	2.8	4.9	4.3	2.8	2.0	1.7	1.4	*2.0
1963-----	2.4	4.9	1.1	0.5	2.6	4.5	4.1	2.8	1.8	1.7	1.9	*1.6
1962-----	2.4	4.8	0.9	0.6	2.8	4.5	4.4	2.5	1.8	1.6	1.7	3.5
1961-----	2.4	4.4	1.0	0.4	2.7	4.7	4.3	2.8	1.6	1.2	2.1	*1.9
1960-----	2.4	4.9	0.7	0.4	2.8	4.6	4.1	2.9	2.0	1.3	1.3	*1.6
1959-----	2.3	3.2	0.8	0.5	2.8	4.8	4.0	2.5	1.6	1.3	1.3	*2.0
1958-----	2.3	3.3	0.8	0.4	3.0	3.9	3.8	2.9	1.6	1.4	2.1	*1.9
1957-----	2.2	2.8	0.6	0.3	2.8	4.1	3.8	2.6	1.8	1.1	1.2	*1.2
1956-----	2.3	3.5	0.7	0.3	2.9	4.3	3.6	2.7	1.7	1.3	1.3	*1.1
1955-----	2.1	3.1	0.6	0.3	2.7	4.0	3.5	2.7	1.5	0.9	1.5	*2.0
1954-----	2.3	3.3	0.6	0.4	2.9	4.0	3.6	3.0	1.1	1.3	1.5	*1.4
1953-----	2.3	3.2	0.7	0.4	2.6	4.2	3.7	2.5	1.5	1.4	*0.9	*4.0
1952-----	2.3	3.5	0.5	0.4	2.8	4.4	4.1	2.5	1.4	1.1	1.0	*1.0
1951-----	2.4	4.6	0.6	0.4	3.0	4.3	3.6	2.5	1.4	1.1	1.5	*1.4
1950-----	2.4	4.2	0.7	0.5	3.1	4.5	3.8	2.3	1.4	1.3	1.4	*2.1

Table 3. Homicide rates, by age, color, and sex: United States, 1950-64—Con.

Color, sex, and year	All ages	Under 1 year	1-4 years	5-14 years	15-24 years	25-34 years	35-44 years	45-54 years	55-64 years	65-74 years	75-84 years	85+ years
Rate per 100,000 population												
<u>White, both sexes</u>												
1964-----	2.7	4.3	1.0	0.5	3.0	4.8	4.2	3.8	3.0	2.1	2.1	2.8
1963-----	2.7	4.2	1.0	0.5	2.8	4.8	4.3	3.5	2.9	2.3	2.3	2.2
1962-----	2.7	4.3	0.8	0.5	2.8	4.5	4.2	3.7	2.9	2.4	2.2	3.2
1961-----	2.6	3.6	0.8	0.4	2.7	4.4	4.1	3.7	2.6	2.1	2.4	*2.1
1960-----	2.5	3.7	0.6	0.4	3.0	4.1	3.8	3.5	2.9	2.2	1.8	*2.0
1959-----	2.5	3.1	0.8	0.5	2.8	3.9	3.8	3.4	2.7	2.2	2.0	*1.8
1958-----	2.4	2.7	0.6	0.4	2.8	3.5	3.5	3.5	2.6	2.3	2.3	3.0
1957-----	2.3	2.7	0.4	0.3	2.6	3.7	3.5	3.0	2.7	2.1	1.7	*1.3
1956-----	2.3	2.6	0.6	0.4	2.7	3.6	3.3	3.0	2.7	2.0	1.9	*1.5
1955-----	2.3	2.9	0.4	0.4	2.4	3.5	3.8	3.2	2.6	1.8	2.3	*2.1
1954-----	2.4	3.0	0.5	0.4	2.7	3.6	3.9	3.6	2.3	2.0	2.1	*1.6
1953-----	2.4	2.9	0.6	0.4	2.5	3.7	3.9	3.5	2.4	2.1	2.0	3.1
1952-----	2.5	3.3	0.6	0.4	2.6	3.7	4.0	3.5	2.5	2.4	2.1	*2.1
1951-----	2.5	3.9	0.5	0.4	2.4	3.7	3.8	3.3	2.7	2.2	2.1	*1.8
1950-----	2.6	4.1	0.5	0.4	2.5	3.6	4.3	3.5	2.8	2.6	2.2	*1.9
<u>White, male</u>												
1964-----	3.9	4.6	1.1	0.6	4.4	7.0	6.1	5.7	4.7	2.9	3.0	*4.4
1963-----	3.9	4.2	1.1	0.5	4.2	7.3	6.4	5.1	4.4	3.4	3.1	*2.9
1962-----	3.8	4.3	0.7	0.5	3.9	6.9	6.0	5.7	4.6	3.4	3.1	*2.9
1961-----	3.6	3.9	0.8	0.5	3.9	6.4	5.8	5.4	4.1	3.4	2.9	*2.6
1960-----	3.6	3.8	0.6	0.4	4.4	6.2	5.5	5.0	4.3	3.4	2.7	*2.7
1959-----	3.5	3.2	0.8	0.5	4.2	5.5	5.4	5.1	4.3	3.4	3.0	*2.1
1958-----	3.4	2.5	0.5	0.5	4.0	5.5	4.8	5.1	4.1	3.5	2.6	*4.4
1957-----	3.2	3.1	0.3	0.4	3.9	5.6	4.8	4.3	4.0	3.4	2.5	*1.3
1956-----	3.3	2.5	0.6	0.5	4.0	5.4	4.8	4.3	4.3	3.3	2.7	*2.3
1955-----	3.4	3.3	0.4	0.4	3.5	5.2	5.7	4.6	4.1	3.0	3.4	*3.4
1954-----	3.5	3.0	0.5	0.4	3.9	5.4	5.7	5.1	3.6	3.1	3.3	*2.5
1953-----	3.5	2.7	0.6	0.4	3.8	5.4	5.7	5.2	3.7	3.1	3.3	*3.4
1952-----	3.7	3.7	0.7	0.5	3.9	5.6	5.8	5.3	4.0	3.9	3.6	*3.6
1951-----	3.6	3.6	0.4	0.4	3.6	5.5	5.6	4.9	4.3	3.5	3.0	*2.1
1950-----	3.9	4.3	0.4	0.4	3.7	5.4	6.4	5.5	4.4	4.1	3.5	*1.8
<u>White, female</u>												
1964-----	1.6	4.0	0.9	0.4	1.6	2.7	2.4	1.9	1.5	1.5	1.4	*1.9
1963-----	1.5	4.1	0.9	0.4	1.4	2.3	2.2	1.9	1.4	1.3	1.7	*1.8
1962-----	1.6	4.2	0.9	0.5	1.7	2.2	2.5	1.8	1.4	1.5	1.6	*3.3
1961-----	1.5	3.3	0.8	0.4	1.5	2.4	2.5	2.1	1.2	1.1	2.0	*1.8
1960-----	1.4	3.5	0.5	0.3	1.5	2.0	2.2	1.9	1.5	1.1	1.2	*1.5
1959-----	1.4	2.9	0.7	0.4	1.4	2.4	2.2	1.8	1.1	1.1	1.3	*1.6
1958-----	1.4	2.8	0.7	0.3	1.6	1.7	2.2	1.9	1.2	1.2	2.1	*2.1
1957-----	1.3	2.2	0.5	0.3	1.4	1.9	2.2	1.7	1.5	0.9	1.1	*1.3
1956-----	1.3	2.6	0.6	0.2	1.4	1.9	1.8	1.8	1.2	1.0	1.3	*0.9
1955-----	1.2	2.5	0.4	0.3	1.3	1.7	1.9	1.9	1.1	0.7	1.4	*1.2
1954-----	1.4	3.0	0.6	0.4	1.5	1.9	2.1	2.0	1.0	1.0	1.1	*1.0
1953-----	1.4	3.1	0.6	0.3	1.2	2.0	2.1	1.7	1.1	1.2	*0.8	*3.0
1952-----	1.3	3.0	0.5	0.3	1.4	1.8	2.3	1.7	1.1	0.9	*0.8	*1.1
1951-----	1.4	4.2	0.5	0.4	1.3	1.9	2.0	1.7	1.1	1.0	1.3	*2.2
1950-----	1.4	3.9	0.6	0.4	1.3	1.9	2.2	1.6	1.3	1.1	1.2	*1.9

Table 3. Homicide rates, by age, color, and sex: United States, 1950-64—Con.

Color, sex, and year	All ages	Under 1 year	1-4 years	5-14 years	15-24 years	25-34 years	35-44 years	45-54 years	55-64 years	65-74 years	75-84 years	85+ years
<u>Nonwhite, both sexes</u>	Rate per 100,000 population											
1964-----	22.9	11.1	2.2	1.4	29.9	52.6	50.8	33.2	20.4	12.2	7.3	*5.8
1963-----	22.0	8.9	1.8	1.4	27.6	51.7	48.3	31.6	21.2	11.6	7.8	*5.1
1962-----	21.8	9.5	1.5	1.0	29.1	50.9	46.4	31.4	20.7	11.5	7.8	*6.8
1961-----	20.9	9.6	2.2	1.2	26.9	48.6	43.5	29.7	17.6	11.7	9.5	*11.1
1960-----	21.9	11.6	1.7	1.2	27.0	51.6	44.6	31.4	17.7	10.5	9.5	*7.0
1959-----	21.8	7.2	1.4	1.0	28.3	51.3	45.1	29.6	18.2	10.8	8.5	*11.8
1958-----	21.7	7.4	1.3	0.8	27.7	49.7	42.1	33.0	18.3	10.6	6.8	*6.1
1957-----	22.5	5.6	1.6	1.1	28.1	51.6	42.4	33.2	18.0	13.5	8.2	*3.1
1956-----	23.3	7.5	1.2	1.1	30.0	53.3	45.3	29.7	19.0	11.4	*6.0	*11.5
1955-----	22.8	6.5	1.2	1.0	27.9	52.9	41.6	31.3	20.5	9.0	*6.3	*13.8
1954-----	24.6	7.8	1.2	1.2	29.8	55.2	45.2	34.7	17.8	12.0	11.5	*5.5
1953-----	25.0	4.7	*1.0	1.1	31.3	53.7	50.2	31.7	16.4	11.1	*7.3	*9.6
1952-----	27.6	6.3	*1.0	0.9	33.0	63.0	53.5	31.6	19.0	11.0	11.1	-
1951-----	25.6	6.6	1.3	0.8	31.9	55.8	47.0	30.9	19.5	8.6	*7.8	*6.4
1950-----	28.0	6.2	*1.2	1.5	35.1	63.4	47.8	30.7	17.9	12.4	*7.9	*6.7
<u>Nonwhite, male</u>												
1964-----	37.4	9.8	1.9	1.3	49.6	89.6	86.9	58.1	34.6	21.5	14.7	*8.1
1963-----	35.7	9.3	1.8	1.5	45.2	87.7	81.1	54.7	37.5	17.9	12.6	*12.1
1962-----	35.5	10.5	1.7	1.2	48.2	85.2	76.3	56.1	36.0	21.0	11.8	*6.5
1961-----	33.6	9.3	2.1	1.5	44.2	81.3	71.0	51.3	29.9	21.8	15.3	*22.6
1960-----	34.5	10.1	*1.6	1.4	43.7	84.7	72.3	51.5	29.1	18.6	16.7	*12.8
1959-----	35.0	9.7	*1.5	1.3	45.3	84.2	73.4	51.3	30.8	18.4	15.3	*17.2
1958-----	34.9	8.3	*1.5	*0.9	44.2	83.4	68.8	54.7	31.8	18.1	*10.8	*14.8
1957-----	36.5	*4.9	*1.7	1.6	45.8	86.7	69.6	56.3	31.5	23.7	14.8	*7.7
1956-----	37.1	*6.6	*0.9	1.7	48.8	88.0	73.7	49.0	30.5	18.3	*10.8	*24.0
1955-----	36.9	*6.1	*1.1	1.4	45.3	89.1	67.8	53.0	35.2	16.0	*8.8	*16.7
1954-----	40.6	10.1	*1.4	1.6	49.6	94.8	76.2	57.6	33.2	19.9	*15.1	*4.5
1953-----	41.3	*5.6	*1.1	1.5	53.7	90.6	85.6	54.2	27.0	19.2	*12.3	-
1952-----	45.4	*5.4	*1.3	*1.2	55.8	106.1	90.1	53.1	32.7	19.1	18.2	-
1951-----	41.3	*5.9	*1.5	*0.8	50.8	91.5	79.8	51.6	33.9	15.0	*11.3	*15.8
1950-----	45.5	*5.9	*0.9	1.8	56.5	105.6	80.4	52.8	32.3	20.9	*11.9	*10.7
<u>Nonwhite, female</u>												
1964-----	9.2	12.4	2.4	1.4	11.1	20.5	19.4	10.5	6.8	4.2	*0.9	*4.1
1963-----	9.1	8.5	1.9	1.3	10.9	20.4	19.6	10.5	5.5	6.1	*3.5	-
1962-----	8.9	8.4	*1.3	0.8	11.0	21.2	20.0	8.5	5.9	*3.3	*4.2	*7.1
1961-----	8.9	10.0	2.3	0.8	10.6	20.4	19.1	9.5	5.6	*2.6	*4.3	*2.4
1960-----	9.9	13.0	1.7	1.0	11.3	22.9	19.6	12.3	6.6	*3.1	*3.0	*2.5
1959-----	9.4	*4.6	*1.2	*0.7	12.4	22.9	19.2	9.2	6.0	*3.9	*2.5	*7.7
1958-----	9.3	*6.6	*1.1	*0.8	12.5	20.5	17.7	12.4	5.3	*3.8	*3.3	-
1957-----	9.2	*6.3	*1.5	*0.5	12.0	21.3	17.4	11.0	4.9	*4.1	*2.1	-
1956-----	10.3	8.4	*1.6	*0.6	13.0	23.1	19.0	11.1	7.6	4.9	*1.4	*2.8
1955-----	9.5	*6.8	*1.2	*0.6	12.3	21.5	17.2	10.2	6.0	*2.5	*3.8	*11.8
1954-----	9.5	*5.6	*0.9	*0.7	12.6	20.8	16.4	12.5	*2.5	*4.7	*7.9	*6.3
1953-----	9.6	*3.8	*1.0	*0.8	12.2	21.6	17.2	9.7	5.6	*3.5	*2.5	*16.1
1952-----	10.8	*7.1	*0.6	*0.7	13.2	25.2	19.4	10.4	4.9	*3.4	*4.3	-
1951-----	10.7	*7.2	*1.2	*0.7	15.3	24.3	16.6	10.4	4.5	*2.6	*4.5	-
1950-----	11.2	*6.4	*1.5	*1.2	15.8	25.8	17.7	8.7	*3.2	*3.9	*3.9	*3.8

Table 4. Homicide rates, by age, color, and sex: United States, geographic division, and State, 1959-61 (3-year average)

Color, sex, and geographic area	All ages	Under 1 year	1-4 years	5-14 years	15-24 years	25-34 years	35-44 years	45-54 years	55-64 years	65-74 years	75-84 years	85+ years
Total, both sexes	Rate per 100,000 population											
United States----	4.7	4.4	0.9	0.5	5.8	9.4	8.1	6.1	4.1	2.9	2.6	2.6
New England-----	1.4	*2.6	1.0	*0.3	1.7	2.3	1.8	1.4	1.4	1.2	*1.5	*0.5
Maine-----	1.7	*6.0	*0.8	*0.5	*1.5	*3.5	*1.7	*2.2	*2.3	*0.5	*1.0	*4.3
New Hampshire-----	1.2	-	*0.6	*0.3	*3.0	*0.5	*0.4	*2.9	*0.6	-	*3.3	-
Vermont-----	*0.9	-	*1.9	*0.8	-	*2.3	*1.4	-	-	*2.5	-	-
Massachusetts-----	1.2	*1.8	*0.5	*0.1	1.7	1.9	1.9	1.1	1.5	*1.2	*1.8	-
Rhode Island-----	1.4	*7.3	*2.3	-	*1.1	*1.6	*2.2	*1.0	*2.4	*0.6	-	-
Connecticut-----	1.6	*2.4	*1.3	*0.4	*1.9	3.2	1.8	*1.7	*1.0	*1.8	*1.0	-
Middle Atlantic-----	3.0	7.5	1.0	0.5	3.9	5.7	4.4	3.2	2.4	2.0	2.2	*1.5
New York-----	3.4	8.9	0.9	0.5	4.9	6.5	5.3	3.4	2.5	2.2	2.0	*1.2
New Jersey-----	2.5	*3.9	1.4	*0.5	3.2	4.4	3.3	3.3	2.3	*1.5	*2.7	*2.4
Pennsylvania-----	2.6	7.4	0.9	0.5	3.0	5.1	3.7	3.0	2.2	2.1	2.4	*1.6
East North Central--	3.6	3.9	1.0	0.4	4.1	7.1	6.1	4.7	3.6	2.3	2.3	*2.7
Ohio-----	3.5	4.1	0.9	0.4	3.4	7.1	6.0	4.2	3.8	2.2	*2.1	*3.2
Indiana-----	3.2	*3.7	*0.7	*0.2	3.4	5.7	5.7	4.2	4.2	2.5	*3.0	*3.6
Illinois-----	4.8	4.9	1.4	0.6	5.9	9.5	8.0	5.8	4.4	2.9	*2.4	*1.9
Michigan-----	3.5	*3.3	0.9	0.5	4.1	7.0	5.8	5.0	3.3	2.4	*2.5	*2.0
Wisconsin-----	1.6	*2.4	*0.8	*0.2	2.2	2.5	2.4	2.6	*0.9	*1.0	*1.5	*2.9
West North Central--	2.6	3.0	*0.5	0.4	2.7	5.2	4.8	3.5	2.5	2.5	1.6	*1.8
Minnesota-----	1.3	*2.3	*0.2	*0.3	1.7	*1.6	2.5	*1.4	*1.5	*1.6	*0.7	*1.6
Iowa-----	1.2	*1.6	*0.3	*0.4	*1.1	2.1	*1.8	*1.4	*1.4	*0.8	*1.7	*1.5
Missouri-----	5.1	*5.6	*0.5	*0.5	5.3	10.8	9.6	6.4	4.7	4.5	*2.4	*4.1
North Dakota-----	1.3	*2.0	*1.1	*0.7	*0.4	*2.7	*1.8	*2.0	*0.6	*1.8	*1.9	-
South Dakota-----	2.1	*1.9	*0.5	*1.1	*2.2	*2.6	*5.4	*0.9	*2.2	*2.1	*1.6	-
Nebraska-----	2.2	*3.0	*1.0	*0.2	*1.5	5.9	*2.7	4.3	*1.8	*1.9	*0.7	-
Kansas-----	2.5	*1.3	*0.3	*0.5	3.1	4.4	4.6	3.7	*2.1	*2.4	*1.4	-
South Atlantic-----	8.2	5.4	1.0	0.6	9.5	18.1	15.5	11.5	6.3	4.5	3.1	*4.0
Delaware-----	4.7	*5.9	*2.3	*1.5	*5.2	*8.0	*6.7	*7.5	*1.9	*2.8	*3.3	*15.9
Maryland-----	5.2	*5.9	*0.3	*0.8	6.4	9.0	9.6	6.6	4.2	*3.5	*2.2	*10.7
District of Columbia--	11.0	*15.7	*3.3	*0.9	9.5	22.2	22.2	11.7	*6.6	*5.0	-	-
Virginia-----	6.9	8.3	*1.2	*0.5	6.9	15.2	10.8	10.1	5.7	4.9	*5.3	*6.0
West Virginia-----	4.0	*0.9	*0.6	*0.5	2.5	7.5	8.7	8.2	*2.7	*2.7	*2.6	*3.4
North Carolina-----	9.0	*4.7	*0.6	*0.4	10.0	21.1	16.9	12.2	8.0	6.0	*3.1	*2.0
South Carolina-----	9.1	*3.9	*0.3	*0.4	11.8	21.3	18.7	12.9	6.7	*3.9	*0.8	-
Georgia-----	10.7	*4.5	*1.1	*0.6	13.7	22.5	22.0	14.7	7.8	5.5	*3.7	*4.2
Florida-----	9.6	*5.1	1.6	*0.7	11.1	22.6	17.8	13.5	7.0	4.2	*2.9	*1.4
East South Central--	8.3	2.7	*0.4	0.7	10.3	16.9	15.9	13.0	8.2	5.3	4.6	*4.9
Kentucky-----	6.8	*1.9	*0.5	*0.6	7.2	13.4	13.7	11.1	6.2	5.7	*4.6	*9.5
Tennessee-----	7.2	*2.9	*0.3	*0.3	7.5	14.8	14.7	10.8	7.4	4.8	*1.9	*3.7
Alabama-----	10.2	*3.4	*0.5	*0.9	13.5	21.7	18.0	16.4	10.0	4.6	*4.6	*2.3
Mississippi-----	9.4	*2.3	*0.5	1.4	14.2	18.1	18.0	14.2	10.1	6.7	*9.3	*2.9
West South Central--	7.3	3.4	0.7	0.6	9.8	15.4	13.2	9.8	6.8	4.0	3.9	*3.1
Arkansas-----	6.9	*1.7	*0.4	*0.4	8.1	15.5	15.0	9.5	7.4	*3.7	*5.4	*3.0
Louisiana-----	7.9	*3.4	*0.3	*0.5	11.6	18.9	13.8	9.5	8.3	4.5	*4.5	*2.4
Oklahoma-----	5.1	*2.7	*1.0	*0.5	4.8	9.3	8.3	8.7	6.5	*4.0	*4.0	*6.0
Texas-----	7.6	3.8	0.9	0.7	10.6	15.6	13.8	10.3	6.3	3.9	3.2	*2.3
Mountain-----	4.4	*2.6	*0.7	0.8	5.3	7.3	8.0	6.6	4.7	4.1	4.7	*1.1
Montana-----	3.6	*2.0	*0.5	*0.7	*3.7	*6.2	*6.6	*5.5	*3.8	*3.9	-	*10.0
Idaho-----	2.0	*2.0	*0.5	-	*2.1	*3.9	*3.6	*3.2	*2.7	*1.8	*1.9	-
Wyoming-----	4.1	*4.0	-	-	*6.0	*5.3	*7.7	*5.6	*2.6	-	*9.5	-
Colorado-----	4.3	*3.1	*1.2	*1.1	4.8	7.9	6.2	5.9	*4.7	*4.6	*4.2	-
New Mexico-----	5.7	*2.3	*0.6	*0.9	9.0	8.3	9.8	8.0	*7.7	*7.6	*7.4	-
Arizona-----	6.3	*1.9	*0.8	*0.6	7.7	10.8	12.7	10.0	*6.1	*4.2	*5.9	-
Utah-----	1.6	*1.3	-	*0.3	*2.2	*1.8	*5.1	*2.0	*1.1	*1.7	*1.9	-
Nevada-----	8.5	*9.7	*2.5	*1.2	*5.3	*11.6	*13.1	*14.9	*8.8	*10.6	*28.2	-
Pacific-----	3.8	3.9	1.0	0.6	4.5	6.8	6.4	5.0	3.7	2.1	2.2	*3.5
Washington-----	2.5	*3.7	*0.5	*0.3	2.4	3.8	5.1	4.1	2.9	*1.7	*2.0	*2.1
Oregon-----	2.3	*2.8	-	*0.3	*1.9	5.1	5.2	3.4	*1.9	*1.4	*0.6	-
California-----	4.1	4.2	1.1	0.6	5.4	7.5	6.6	5.2	3.9	2.3	2.5	*4.4
Alaska-----	7.8	-	-	-	*3.3	*10.1	22.9	*15.8	*18.2	*8.9	-	-
Hawaii-----	2.7	*2.0	*1.6	*0.5	*1.3	*3.9	*3.7	*8.4	*2.6	*3.4	*4.2	-

Table 4. Homicide rates, by age, color, and sex: United States, geographic division, and State, 1959-61 (3-year average)—Con.

Color, sex, and geographic area	All ages	Under 1 year	1-4 years	5-14 years	15-24 years	25-34 years	35-44 years	45-54 years	55-64 years	65-74 years	75-84 years	85+ years
Total, male	Rate per 100,000 population											
United States---	7.0	4.6	0.9	0.6	8.9	14.3	12.2	9.6	6.6	4.7	3.9	3.8
New England-----	1.6	*1.7	*1.0	*0.4	2.0	2.8	2.1	1.8	1.5	*1.6	*2.3	-
Maine-----	1.8	*3.0	*0.8	*1.0	*1.5	*3.5	*1.7	*3.2	*2.4	-	*2.3	-
New Hampshire-----	*1.6	-	-	*0.6	*2.5	*0.9	*0.9	*4.0	*1.2	-	*8.0	-
Vermont-----	*1.2	-	*1.9	*1.7	-	*3.1	*1.5	-	-	*2.7	-	-
Massachusetts-----	1.5	*1.8	*0.7	*0.3	2.1	2.1	2.2	*1.5	*1.7	*2.0	*2.1	-
Rhode Island-----	1.6	*3.6	*1.8	-	*2.1	*2.6	*2.3	*1.4	*1.7	-	-	-
Connecticut-----	1.9	*1.2	*1.5	*0.4	*2.2	4.2	*2.3	*1.7	*0.9	*2.2	*2.4	-
Middle Atlantic----	4.4	8.4	1.0	0.5	6.2	8.5	6.5	5.1	3.7	3.3	3.5	*2.1
New York-----	5.4	10.1	1.2	0.6	8.1	10.1	8.3	5.7	4.2	3.8	*3.4	*1.1
New Jersey-----	3.4	*4.1	*1.1	*0.7	4.8	5.8	4.6	4.3	3.4	*2.1	*4.4	*3.4
Pennsylvania-----	3.6	8.4	*0.6	*0.4	4.2	7.5	5.1	4.6	3.2	3.2	*3.2	*2.9
East North Central--	5.3	3.6	1.1	0.4	6.3	10.7	9.2	7.1	5.5	3.6	3.1	*2.3
Ohio-----	4.8	*3.2	*0.8	*0.4	5.0	10.4	8.2	6.5	5.3	3.7	*3.0	*4.9
Indiana-----	4.9	*4.2	*0.6	*0.3	5.6	9.5	8.8	6.5	7.0	*3.5	*2.3	*6.1
Illinois-----	7.4	*3.7	1.7	*0.6	10.0	14.9	12.9	9.2	7.1	4.4	*4.3	-
Michigan-----	5.0	*3.8	*1.0	*0.5	5.6	10.1	8.8	7.4	5.0	3.9	*3.1	-
Wisconsin-----	1.8	*3.4	*1.2	*0.2	*2.3	2.8	3.0	3.3	*1.1	*0.8	*1.9	-
West North Central--	3.8	*2.6	*0.4	0.6	3.8	7.6	7.3	4.9	4.0	4.0	*2.3	*3.0
Minnesota-----	1.9	*2.3	*0.2	*0.4	*3.0	*2.2	3.7	*1.8	*2.4	*2.6	*1.4	*3.8
Iowa-----	1.3	-	-	*0.6	*1.5	*2.3	*1.8	*2.2	*1.3	*1.4	*0.8	-
Missouri-----	7.9	*4.1	*0.7	*0.5	7.3	17.2	16.0	9.7	8.4	7.7	*4.5	*7.8
North Dakota-----	*2.0	*4.0	*2.1	*1.4	-	*3.6	*2.7	*1.9	*1.2	*3.4	*3.7	-
South Dakota-----	2.4	-	-	*1.8	*0.7	*3.4	*7.3	-	*4.3	*2.8	*3.3	-
Nebraska-----	3.2	*4.0	*0.5	-	*1.8	9.1	*4.3	*6.9	*2.1	*3.3	*1.5	-
Kansas-----	3.2	*2.7	*0.3	*0.8	4.5	5.4	5.9	*4.3	*2.5	*3.4	*1.9	-
South Atlantic-----	12.5	5.3	1.0	0.7	14.4	27.6	23.0	18.6	10.6	7.8	4.4	*6.2
Delaware-----	6.2	*5.9	*3.0	*2.2	*7.1	*10.8	*7.3	*12.3	*2.0	*3.1	*7.7	-
Maryland-----	7.4	*6.2	*0.2	*1.2	9.6	12.9	13.3	9.7	6.5	*5.9	*1.4	*15.1
District of Columbia--	16.7	*15.6	*3.3	*1.2	15.0	31.1	33.3	21.4	*10.7	*10.5	-	-
Virginia-----	10.0	*7.1	*0.9	*0.6	9.7	21.7	14.6	16.8	10.8	8.5	*8.7	*15.3
West Virginia-----	6.1	*1.7	*0.4	*0.5	*3.9	10.8	13.4	13.4	*5.5	*5.5	*4.1	-
North Carolina-----	14.4	*6.8	*0.8	*0.5	15.3	34.8	26.3	20.5	13.5	11.5	*4.6	*5.2
South Carolina-----	14.1	*3.3	*0.3	*0.5	18.5	32.8	28.2	22.0	10.8	*6.6	-	-
Georgia-----	16.6	*3.4	*0.7	*0.9	22.2	34.6	35.4	22.9	12.5	8.7	*8.2	*5.6
Florida-----	14.2	*4.2	*2.4	*0.8	15.8	34.2	25.5	21.6	12.0	6.8	*2.9	*3.2
East South Central--	13.5	*3.0	*0.5	0.8	16.5	27.8	26.6	22.1	14.5	9.3	7.4	*9.2
Kentucky-----	11.1	*2.8	*0.7	*0.5	11.4	22.1	22.6	17.9	11.5	10.8	*8.5	*13.5
Tennessee-----	11.7	*2.5	*0.4	*0.3	11.5	25.2	23.9	17.7	13.9	8.6	*4.2	*9.0
Alabama-----	16.6	*5.0	*0.2	*0.7	21.6	36.1	30.7	29.2	17.0	*7.6	*3.1	*5.9
Mississippi-----	15.3	*1.2	*0.9	*1.8	23.6	28.0	31.2	24.6	16.6	*10.2	*16.2	*6.6
West South Central--	11.6	3.7	*0.8	0.8	15.7	24.8	21.1	16.2	12.0	6.9	6.9	*3.8
Arkansas-----	11.2	*1.7	*0.9	*0.5	13.1	24.2	26.9	14.9	13.8	*6.3	*7.4	-
Louisiana-----	12.5	*4.5	*0.6	*0.5	18.1	30.4	21.2	15.9	14.8	*7.8	*8.1	-
Oklahoma-----	8.2	*4.0	*0.7	*0.6	6.7	14.7	13.1	16.3	9.6	*8.2	*7.9	*9.2
Texas-----	12.2	*3.6	*0.9	1.0	17.6	25.3	22.0	16.6	11.3	6.4	*5.9	*3.9
Mountain-----	6.2	*4.0	*0.8	*0.7	7.6	10.7	10.8	8.7	7.6	7.1	*6.6	*2.7
Montana-----	4.8	*3.9	*1.0	*0.9	*4.4	*10.7	*8.4	*4.3	*6.2	*7.5	-	*21.7
Idaho-----	2.3	*3.9	*1.0	-	*1.4	*6.1	*3.2	*2.6	*2.6	*3.5	-	-
Wyoming-----	5.9	*8.0	-	*1.8	*9.1	*7.5	*10.5	*8.9	*2.5	-	*19.0	-
Colorado-----	6.1	*4.6	*1.6	*1.5	6.6	11.1	8.7	7.6	*8.6	*7.1	*8.0	-
New Mexico-----	7.9	*2.3	*0.6	-	13.3	12.0	11.7	*12.0	*14.2	*13.3	*10.0	-
Arizona-----	9.4	*3.8	*0.5	*0.5	11.7	16.1	19.4	15.5	*8.7	*8.3	*6.2	-
Utah-----	2.1	-	-	*0.3	*3.0	*2.9	*6.4	*2.4	*2.3	*1.8	-	-
Nevada-----	11.3	*19.4	*2.5	-	*8.6	*16.4	*15.2	*15.7	*15.4	*19.0	*41.5	-
Pacific-----	5.2	4.7	0.8	0.6	6.3	9.6	9.3	7.0	5.3	3.0	*2.3	*6.7
Washington-----	3.6	*3.1	*1.0	*0.5	3.4	4.8	7.4	6.4	*4.5	*1.9	*1.7	-
Oregon-----	3.4	*3.6	-	-	*2.7	7.0	7.5	*5.5	*3.3	*2.8	-	-
California-----	5.7	5.4	0.9	0.7	7.6	10.8	9.5	7.0	5.6	3.2	*2.8	*9.5
Alaska-----	9.6	-	-	-	*1.2	*13.2	*31.4	*15.0	*23.4	*14.4	-	-
Hawaii-----	3.5	-	-	*0.5	*1.6	*4.3	*6.4	*13.2	*3.1	*3.2	-	-

Table 4. Homicide rates, by age, color, and sex: United States, geographic division, and State, 1959-61 (3-year average)—Con.

Color, sex, and geographic area	All ages	Under 1 year	1-4 years	5-14 years	15-24 years	25-34 years	35-44 years	45-54 years	55-64 years	65-74 years	75-84 years	85+ years
Total, female	Rate per 100,000 population											
United States----	2.4	4.2	0.8	0.5	2.7	4.7	4.1	2.8	1.7	1.3	1.6	1.8
New England-----	1.1	*3.5	*0.9	*0.1	1.4	1.8	1.5	1.1	1.3	*0.8	*0.9	*0.7
Maine-----	1.6	*9.1	*0.8	-	*1.5	*3.4	*1.7	*1.2	*2.2	*0.9	-	*7.0
New Hampshire-----	*0.8	-	*1.3	-	*3.4	-	-	*1.9	-	-	-	-
Vermont-----	*0.7	-	*2.0	-	-	*1.5	*1.4	-	-	*2.3	-	-
Massachusetts-----	1.0	*1.8	*0.3	-	*1.4	*1.7	*1.6	*0.8	*1.2	*0.5	*1.7	-
Rhode Island-----	*1.3	*11.1	*2.8	-	-	*0.6	*2.2	*0.6	*3.0	*1.0	-	-
Connecticut-----	1.3	*3.7	*1.2	*0.3	*1.5	*2.2	*1.4	*1.7	*1.1	*1.5	-	-
Middle Atlantic-----	1.7	6.5	1.0	0.4	1.9	3.0	2.4	1.5	1.1	1.0	1.3	*1.2
New York-----	1.6	7.6	*0.6	*0.4	1.9	3.1	2.6	1.3	0.9	*0.8	*0.9	*1.2
New Jersey-----	1.7	*3.7	*1.6	*0.2	*1.6	3.1	2.0	2.4	*1.3	*1.0	*1.6	*1.8
Pennsylvania-----	1.7	6.3	*1.4	*0.5	1.9	2.9	2.3	1.5	1.3	*1.1	*1.7	*0.9
East North Central--	2.0	4.2	0.9	0.4	2.0	3.6	3.2	2.2	1.8	1.2	1.6	*2.9
Ohio-----	2.2	*5.1	*1.1	*0.5	1.9	3.9	4.0	1.9	2.5	*1.0	*1.4	*2.1
Indiana-----	1.6	*3.1	*0.8	*0.2	*1.4	*2.1	2.8	*2.0	*1.6	*1.5	*3.6	*2.0
Illinois-----	2.2	6.1	*1.1	*0.5	2.0	4.3	3.3	2.5	1.9	*1.6	*0.9	*3.1
Michigan-----	2.1	*2.8	*0.9	*0.6	2.6	4.0	2.8	2.6	*1.6	*0.9	*2.1	*3.4
Wisconsin-----	1.3	*1.4	*0.4	*0.3	*2.1	*2.1	*1.7	*1.9	*0.7	*1.2	*1.1	*5.0
West North Central--	1.5	*3.4	*0.5	*0.3	1.7	2.8	2.4	2.1	1.2	*1.0	*0.9	*1.0
Minnesota-----	0.7	*2.4	*0.2	*0.3	*0.6	*1.0	*1.3	*1.1	*0.6	*0.6	-	-
Iowa-----	1.0	*3.3	*0.6	*0.1	*0.7	*1.9	*1.8	*0.7	*1.5	*0.3	*2.4	*2.5
Missouri-----	2.4	*7.2	*0.4	*0.5	3.3	4.8	3.6	3.3	*1.3	*1.7	*0.8	*1.7
North Dakota-----	*0.6	-	-	-	*0.7	*1.9	*0.9	*2.0	-	-	-	-
South Dakota-----	*1.7	*3.9	*1.0	*0.5	*3.7	*1.7	*3.4	*1.9	-	*1.4	-	-
Nebraska-----	1.3	*2.1	*1.6	*0.5	*1.1	*2.8	*1.2	*1.7	*1.5	*0.6	-	-
Kansas-----	1.8	-	*0.3	*0.2	*1.6	*3.4	*3.4	*3.1	*1.7	*1.7	*1.6	-
South Atlantic-----	4.1	5.6	0.9	0.4	4.4	9.1	8.3	4.7	2.4	1.7	*2.0	*2.5
Delaware-----	3.3	*6.0	*1.5	*0.8	*3.4	*5.3	*6.2	*2.8	*1.9	*2.6	-	*26.2
Maryland-----	3.0	*5.5	*0.5	*0.4	3.2	5.3	6.0	*3.5	*1.9	*1.6	*2.7	*8.2
District of Columbia--	5.9	*15.8	*3.3	*0.6	*4.6	13.4	12.8	*3.7	*3.2	*1.2	-	-
Virginia-----	3.8	*9.4	*1.5	*0.3	3.9	8.7	7.1	3.4	*1.1	*1.9	*2.9	-
West Virginia-----	1.9	-	*0.9	*0.5	*1.2	*4.6	*4.3	*3.1	-	-	*1.3	*6.1
North Carolina-----	3.8	*2.5	*0.3	*0.3	4.4	8.2	8.0	4.5	*3.1	*1.5	*2.1	-
South Carolina-----	4.3	*4.5	*0.3	*0.4	4.4	10.6	9.7	*4.4	*3.2	*1.7	*1.4	-
Georgia-----	5.0	*5.6	*1.4	*0.3	5.0	11.2	9.6	7.0	*3.7	*3.0	*0.7	*3.4
Florida-----	5.1	*6.1	*0.8	*0.6	6.4	11.5	10.5	5.9	2.7	*1.7	*2.8	-
East South Central--	3.3	*2.4	*0.4	0.7	4.1	6.9	6.0	4.3	2.5	1.9	*2.4	*1.9
Kentucky-----	2.6	*1.0	*0.2	*0.6	*2.8	5.2	5.2	4.4	*1.3	*1.0	*1.4	*6.5
Tennessee-----	2.9	*3.4	*0.2	*0.3	3.6	5.4	6.3	4.2	*4.5	*1.5	-	-
Alabama-----	4.1	*1.7	*0.9	*1.0	5.7	8.7	6.3	4.3	*3.8	*2.1	*5.7	-
Mississippi-----	3.8	*3.5	-	*0.9	4.5	9.3	6.3	*4.5	*4.1	*3.6	*3.4	-
West South Central--	3.0	*3.1	*0.7	0.4	3.8	6.6	5.7	3.6	2.1	1.5	*1.5	*2.7
Arkansas-----	2.8	*1.7	-	*0.4	*3.2	7.7	*4.3	*4.4	*1.6	*1.0	*3.5	*5.5
Louisiana-----	3.5	*2.3	-	*0.4	5.5	8.3	6.8	*3.4	*2.3	*1.9	*1.8	*4.0
Oklahoma-----	2.2	*1.4	*1.4	*0.4	*2.7	*4.2	*3.8	*1.4	*3.6	*0.4	*0.8	*3.6
Texas-----	3.1	*4.0	*1.0	*0.4	3.6	6.4	6.0	4.1	*1.6	*1.8	*1.1	*1.3
Mountain-----	2.6	*1.1	*0.6	*0.9	3.1	3.8	5.3	4.5	*1.6	*1.1	*3.0	-
Montana-----	2.2	-	-	*0.5	*2.9	*1.7	*4.7	*6.7	*1.3	-	-	-
Idaho-----	*1.8	-	-	-	*2.8	*1.7	*4.0	*3.9	*2.8	-	*3.9	-
Wyoming-----	*2.3	-	-	*1.9	*3.0	*3.1	*4.7	*1.9	*2.8	-	-	-
Colorado-----	2.6	*1.6	*0.8	*0.8	*3.0	*4.8	*3.7	*4.3	*1.0	*2.5	*1.3	-
New Mexico-----	3.5	*2.3	*0.6	*1.8	*4.7	*4.5	*7.9	*3.9	*1.2	*1.9	*4.9	-
Arizona-----	3.2	-	*1.0	*0.7	*3.6	*5.5	*6.1	*4.4	*3.6	-	*5.7	-
Utah-----	*1.2	*2.7	-	*0.3	*1.4	*0.6	*3.8	*1.6	-	*1.6	*3.4	-
Nevada-----	5.6	-	*2.6	*2.5	*1.8	*6.7	*10.9	*14.0	-	-	*14.3	-
Pacific-----	2.3	3.1	1.1	0.6	2.6	3.9	3.6	3.0	2.1	1.4	2.2	*1.6
Washington-----	1.5	*4.3	-	*0.2	*1.2	*2.7	*2.7	*1.7	*1.4	*1.4	*2.3	*3.7
Oregon-----	1.3	*1.9	-	*0.6	*1.1	*3.2	*3.1	*1.3	*0.4	-	*1.2	-
California-----	2.5	*3.1	1.3	0.6	3.1	4.1	3.8	3.3	2.4	1.5	*2.2	*1.4
Alaska-----	*5.5	-	-	-	*7.2	*5.9	*11.9	*16.9	*9.6	-	-	-
Hawaii-----	*1.8	*4.1	*3.2	*0.5	*0.8	*3.6	*0.8	*1.4	*2.1	*3.7	*9.1	-

Table 4. Homicide rates, by age, color, and sex: United States, geographic division, and State, 1959-61 (3-year average)—Con.

Color, sex, and geographic area	All ages	Under 1 year	1-4 years	5-14 years	15-24 years	25-34 years	35-44 years	45-54 years	55-64 years	65-74 years	75-84 years	85+ years
Rate per 100,000 population												
White, both sexes												
United States---	2.5	3.5	0.7	0.4	2.8	4.1	3.9	3.5	2.7	2.2	2.1	2.0
New England-----	1.2	*2.4	0.9	*0.2	1.5	1.7	1.4	1.2	1.3	1.2	*1.4	*0.5
Maine-----	1.7	*6.1	*0.8	*0.5	*1.5	*3.5	*1.7	*2.2	*2.3	*0.5	*1.0	*4.3
New Hampshire-----	1.2	-	*0.6	*0.3	*3.0	*0.5	*0.4	*2.9	*0.6	-	*3.3	-
Vermont-----	*0.9	-	*1.9	*0.8	-	*2.3	*1.4	-	-	*2.5	-	-
Massachusetts-----	1.1	*1.6	*0.5	*0.1	1.5	1.5	1.6	*1.0	1.5	*1.2	*1.7	-
Rhode Island-----	1.3	*7.6	*2.4	-	*1.2	*1.3	*1.7	*1.0	*2.1	*0.6	-	-
Connecticut-----	1.1	*1.9	*1.1	*0.4	*1.3	*1.6	*0.9	*1.2	*0.8	*1.9	*1.0	-
Middle Atlantic-----	1.6	5.3	0.7	0.4	2.2	2.4	1.9	1.7	1.6	1.6	1.8	*1.0
New York-----	1.9	6.0	0.6	0.4	3.1	2.9	2.2	1.7	1.8	1.8	1.7	*0.8
New Jersey-----	1.4	*3.3	*1.2	*0.4	1.7	1.4	1.6	2.1	1.4	*1.0	*1.9	*1.3
Pennsylvania-----	1.4	5.3	*0.5	*0.3	1.3	2.3	1.7	1.7	1.3	1.6	*1.8	*1.1
East North Central--	1.9	3.3	0.8	0.4	2.1	3.0	2.7	2.6	2.3	1.8	2.1	*2.2
Ohio-----	1.8	3.3	0.9	0.4	1.8	2.9	2.5	2.2	2.7	1.6	*1.6	*2.7
Indiana-----	2.0	*4.0	*0.7	*0.2	1.7	2.5	3.2	3.0	2.7	*1.9	*2.6	*2.5
Illinois-----	2.4	3.7	1.1	0.5	2.6	3.9	3.3	3.0	2.4	2.2	*2.4	*1.4
Michigan-----	1.9	*3.1	*0.7	0.5	2.2	2.8	2.6	2.7	2.1	2.0	*2.2	*2.1
Wisconsin-----	1.3	*2.2	*0.6	*0.1	2.0	1.7	1.6	2.4	*0.7	*1.0	*1.5	*3.0
West North Central--	1.7	2.5	*0.5	0.4	1.7	2.6	2.6	2.4	2.1	2.1	1.3	*1.2
Minnesota-----	1.1	*2.4	*0.2	*0.3	1.6	*1.2	1.7	*1.4	*1.5	*1.6	*0.3	*1.6
Iowa-----	1.1	*1.1	*0.3	*0.4	*1.1	*1.7	*1.6	*1.3	*1.4	*0.8	*1.7	*1.5
Missouri-----	2.8	*4.0	*0.6	*0.3	2.7	4.7	4.7	3.3	3.6	3.7	*2.1	*2.2
North Dakota-----	*0.9	*2.1	*0.5	*0.7	-	*0.9	*0.5	*2.0	*0.7	*1.8	*1.9	-
South Dakota-----	1.3	*2.1	*0.5	*1.0	*0.8	*1.8	*2.6	*1.0	*1.7	*1.4	*1.7	-
Nebraska-----	1.4	*3.1	*1.1	*0.2	*0.9	*3.0	*1.0	*2.6	*1.3	*1.6	*0.7	-
Kansas-----	1.8	*1.4	*0.4	*0.4	*1.7	2.6	2.7	3.7	*2.0	*2.3	*0.9	-
South Atlantic-----	3.6	3.6	0.8	0.4	3.1	6.1	6.2	5.8	4.1	3.2	2.1	*3.7
Delaware-----	2.2	*3.6	*0.9	*1.8	*1.4	*1.9	*2.4	*4.7	*1.1	*3.2	-	*17.7
Maryland-----	2.4	*4.0	*0.3	*0.7	2.2	3.0	3.8	3.6	*2.9	*2.3	*1.8	*12.1
District of Columbia--	4.3	*12.4	*4.2	*1.0	*3.1	*6.0	*6.1	*5.0	*4.8	*3.1	-	-
Virginia-----	3.6	*5.7	*1.0	*0.3	2.7	6.7	5.1	6.2	3.7	*3.9	*4.0	*4.9
West Virginia-----	3.4	*0.9	*0.7	*0.4	*1.7	6.9	6.8	7.1	*2.6	*2.2	*2.0	*3.5
North Carolina-----	3.8	*3.2	*0.3	*0.2	3.4	6.2	6.7	6.0	5.5	4.8	*2.4	*2.6
South Carolina-----	4.1	*1.9	*0.5	*0.1	3.2	7.1	8.4	7.0	*5.5	*3.4	-	-
Georgia-----	4.3	*2.1	*0.9	*0.4	4.2	6.4	9.0	6.4	5.7	*3.5	*1.1	*3.0
Florida-----	3.7	*4.5	*1.3	*0.6	3.6	7.0	5.5	5.5	3.7	2.6	*2.3	-
East South Central--	4.3	*2.6	*0.3	0.5	3.9	7.5	7.7	7.4	5.1	3.6	3.7	*2.8
Kentucky-----	5.1	*2.1	*0.5	*0.5	5.5	9.9	10.0	7.6	4.8	4.2	*4.6	*8.2
Tennessee-----	3.8	*3.2	*0.4	*0.3	3.5	6.9	6.4	6.6	5.0	*3.7	*1.7	-
Alabama-----	4.5	*2.7	*0.2	*0.7	3.6	7.0	7.8	9.2	5.7	*3.2	*3.7	-
Mississippi-----	3.3	*2.5	-	*0.8	*2.1	4.7	5.9	5.9	*4.9	*2.7	*5.9	-
West South Central--	4.0	2.5	0.6	0.5	5.1	6.6	7.1	6.2	4.5	2.7	3.0	*2.8
Arkansas-----	3.5	*1.2	-	*0.4	*3.1	5.5	7.3	6.1	*3.3	*2.6	*5.1	*3.9
Louisiana-----	3.1	*2.4	*0.2	*0.1	2.7	5.3	5.0	5.4	5.6	*2.1	*2.2	-
Oklahoma-----	3.5	*2.3	*1.0	*0.5	2.7	5.7	4.8	6.5	5.4	*2.8	*2.9	*6.6
Texas-----	4.5	*2.7	*0.7	0.6	6.6	7.3	8.2	6.3	4.1	2.8	*2.7	*1.8
Mountain-----	3.5	*2.2	*0.8	0.7	4.0	5.3	6.1	5.4	3.9	3.6	4.6	-
Montana-----	3.1	*2.1	*0.5	*0.7	*2.7	*4.7	*6.0	*5.1	*3.9	*3.2	-	-
Idaho-----	1.7	*2.0	*0.5	-	*2.2	*3.1	*2.4	*2.8	*2.7	*1.8	*1.9	-
Wyoming-----	3.3	*4.2	-	*1.9	*3.9	*2.3	*6.2	*5.6	*2.7	-	*9.6	-
Colorado-----	3.5	*3.3	*1.2	*1.0	4.0	5.8	4.1	5.2	*4.5	*4.1	*4.3	-
New Mexico-----	5.1	*2.6	*0.7	*0.8	7.1	7.9	9.2	*6.9	*5.1	*8.0	*7.8	-
Arizona-----	4.4	-	*0.9	*0.5	5.0	7.0	8.9	6.6	*4.3	*2.8	*6.4	-
Utah-----	1.5	*1.3	-	*0.3	*2.2	*1.5	*4.5	*2.0	*0.6	*1.7	*2.0	0.0
Nevada-----	6.5	*5.5	*2.9	*1.3	*2.9	*7.3	*9.0	*11.8	*7.7	*11.1	*21.9	-
Pacific-----	2.8	4.0	0.9	0.5	3.4	4.7	4.3	3.9	3.0	2.0	1.9	*3.0
Washington-----	2.0	*3.3	*0.6	*0.4	1.9	2.5	3.7	3.4	*2.7	*1.7	*1.6	*2.1
Oregon-----	1.8	*2.9	-	*0.3	*1.5	3.4	3.6	*3.0	*1.7	*1.4	*0.6	-
California-----	3.1	4.3	1.1	0.5	4.0	5.1	4.3	4.0	3.2	2.2	2.1	*3.6
Alaska-----	6.3	-	-	-	*2.1	*9.4	*16.0	*8.6	*18.2	-	-	-
Hawaii-----	*1.6	-	-	-	*1.5	*2.0	*2.3	*8.0	-	-	-	-

Table 4. Homicide rates, by age, color, and sex: United States, geographic division, and State, 1959-61 (3-year average)—Con.

Color, sex, and geographic area	All ages	Under 1 year	1-4 years	5-14 years	15-24 years	25-34 years	35-44 years	45-54 years	55-64 years	65-74 years	75-84 years	85+ years
<u>White, male</u>	Rate per 100,000 population											
United States----	3.6	3.7	0.8	0.5	4.2	5.9	5.5	5.2	4.2	3.4	2.9	2.5
New England-----	1.4	*1.5	*0.9	*0.4	1.7	1.9	1.7	1.6	*1.4	*1.7	*2.1	-
Maine-----	1.8	*3.0	*0.8	*1.0	*1.5	*3.5	*1.7	*3.2	*2.4	-	*2.3	-
New Hampshire-----	*1.6	-	-	*0.6	*2.5	*0.9	*0.9	*4.0	*1.2	-	*8.0	-
Vermont-----	*1.2	-	*1.9	*1.7	-	*3.1	*1.5	-	-	*2.7	-	-
Massachusetts-----	1.3	*1.2	*0.6	*0.2	*1.8	*1.5	*1.8	*1.3	*1.8	*2.1	*1.6	-
Rhode Island-----	*1.5	*3.7	*1.9	-	*2.2	*2.0	*2.3	*1.4	*0.9	-	-	-
Connecticut-----	1.3	*1.3	*1.3	*0.4	*1.4	*2.2	*1.3	*1.6	*0.6	*2.3	*2.5	-
Middle Atlantic-----	2.2	5.9	0.7	0.4	3.3	3.5	2.6	2.4	2.3	2.4	2.7	*1.1
New York-----	2.8	6.9	*0.8	0.5	4.8	4.6	3.3	2.5	2.9	2.9	*3.0	-
New Jersey-----	1.7	*4.1	*1.0	*0.6	2.7	*1.4	2.1	2.5	*1.8	*1.4	*2.3	*3.6
Pennsylvania-----	1.7	*5.6	*0.3	*0.2	1.4	3.2	1.9	2.2	1.7	2.3	*2.6	*1.5
East North Central--	2.6	3.2	1.0	0.3	3.1	4.1	3.8	3.9	3.3	2.6	2.6	*1.4
Ohio-----	2.3	*2.9	*0.7	*0.3	2.6	4.0	3.1	3.1	3.5	*2.3	*1.9	*3.5
Indiana-----	2.8	*4.6	*0.7	*0.2	2.7	3.8	4.6	4.6	4.2	*2.6	*1.8	*3.1
Illinois-----	3.5	*2.7	*1.4	*0.5	4.4	5.5	5.1	4.9	3.8	3.0	*4.2	-
Michigan-----	2.5	*3.4	*0.9	*0.4	2.9	3.9	3.6	3.6	3.1	3.3	*2.3	-
Wisconsin-----	1.4	*2.8	*1.1	*0.1	*1.9	*2.0	*1.7	*2.9	*0.9	*0.8	*1.9	-
West North Central--	2.3	*2.3	*0.4	0.5	2.1	3.6	3.6	3.0	3.2	3.3	*1.8	*2.3
Minnesota-----	1.7	*2.3	*0.2	*0.4	*2.8	*1.7	*2.6	*1.6	*2.5	*2.7	*0.7	*3.8
Iowa-----	1.2	-	-	*0.6	*1.5	*1.7	*1.4	*2.0	*1.3	*1.4	*0.8	-
Missouri-----	4.1	*3.1	*0.8	*0.1	2.9	7.5	7.7	4.5	6.4	5.9	*3.8	*5.6
North Dakota-----	*1.4	*4.1	*1.1	*1.5	-	*0.9	*0.9	*1.9	*1.3	*3.5	*3.8	-
South Dakota-----	*1.5	-	-	*1.9	*0.8	*1.8	*2.5	-	*3.3	*1.4	*3.4	-
Nebraska-----	1.7	*4.1	*0.5	-	*0.8	*4.5	*1.2	*3.5	*1.6	*2.7	*1.5	-
Kansas-----	2.1	*2.8	*0.4	*0.6	*1.9	*2.6	*2.8	*4.4	*2.2	*3.0	-	-
South Atlantic-----	5.2	3.8	0.9	0.5	4.5	8.7	8.6	8.7	7.1	5.3	*2.2	*4.8
Delaware-----	*2.6	*7.0	*1.8	*2.6	*2.8	*2.5	*1.2	*6.3	-	*3.5	-	-
Maryland-----	3.1	*4.5	*0.3	*1.0	*3.1	*3.5	4.7	4.7	*4.7	*2.8	-	*17.7
District of Columbia--	6.7	*12.4	*4.1	*2.1	*3.9	*8.3	*10.1	*7.4	*8.0	*7.7	-	-
Virginia-----	4.9	*5.6	*0.7	*0.3	3.2	8.5	6.1	10.1	7.1	*6.3	*6.0	*12.8
West Virginia-----	5.3	*1.8	*0.4	*0.3	*2.7	9.5	11.8	12.1	*5.4	*4.5	*2.8	-
North Carolina-----	6.1	*4.5	*0.7	*0.1	5.2	10.5	10.5	9.9	9.1	9.3	*2.3	*6.8
South Carolina-----	6.0	*1.9	*0.5	*0.2	*4.3	11.7	11.4	10.2	*9.2	*6.6	-	-
Georgia-----	6.4	*1.1	*0.8	*0.6	6.6	9.1	14.6	8.1	10.3	*5.9	*1.4	-
Florida-----	4.9	*4.0	*1.8	*0.6	5.5	9.7	6.0	8.1	5.9	3.8	*2.1	-
East South Central--	7.0	*2.9	*0.5	*0.4	6.5	12.6	12.8	12.5	8.7	6.4	*5.8	*5.2
Kentucky-----	8.5	*3.1	*0.8	*0.4	9.0	17.2	17.2	12.3	8.7	*7.7	*8.2	*14.7
Tennessee-----	6.2	*2.1	*0.5	*0.3	5.9	12.3	9.8	10.6	8.5	*6.4	*4.0	-
Alabama-----	7.3	*3.9	*0.3	*0.6	5.6	11.4	13.2	16.5	8.9	*5.9	*1.4	-
Mississippi-----	5.0	*2.4	-	*0.5	*3.7	*5.7	9.5	10.1	*8.9	*3.8	*11.1	-
West South Central--	6.2	*2.6	*0.5	0.7	8.1	10.0	10.9	9.8	7.5	4.4	5.1	*3.5
Arkansas-----	5.5	-	-	*0.5	*5.1	*6.6	14.7	9.6	*5.7	*4.7	*6.2	-
Louisiana-----	4.5	*2.4	*0.3	*0.1	*3.3	7.6	6.2	9.2	10.1	*3.4	*3.5	-
Oklahoma-----	5.4	*3.1	*0.8	*0.5	*3.7	8.5	7.9	11.6	8.1	*5.5	*5.4	*10.2
Texas-----	6.9	*2.9	*0.6	1.0	10.9	11.4	12.4	9.6	7.0	4.2	*5.0	*2.3
Mountain-----	4.7	*3.1	*0.9	*0.6	5.5	7.9	7.5	6.8	6.1	6.2	*6.4	-
Montana-----	4.0	*4.1	*1.0	*1.0	*2.3	*8.5	*7.8	*3.6	*6.3	*6.1	-	-
Idaho-----	*1.7	*4.0	*1.0	-	*1.4	*5.3	*0.8	*1.8	*2.6	*3.5	-	-
Wyoming-----	4.4	*8.2	-	*1.9	*4.7	*3.1	*7.6	*9.0	*2.5	-	*19.3	-
Colorado-----	4.9	*4.8	*1.6	*1.3	*4.8	8.5	*5.4	*6.3	*8.3	*5.8	*8.1	-
New Mexico-----	7.0	*2.6	*0.7	-	11.6	11.4	*10.6	*10.4	*8.8	*14.1	*10.7	-
Arizona-----	6.4	-	*0.6	*0.5	*7.6	10.8	13.0	10.5	*5.5	*5.6	*6.7	-
Utah-----	1.8	-	-	*0.3	*3.1	*2.4	*5.2	*2.4	*1.2	*1.8	-	-
Nevada-----	7.8	*11.0	*2.8	-	*5.8	*7.2	*8.1	*12.9	*13.6	*19.9	*28.8	-
Pacific-----	3.8	4.8	0.9	0.5	4.8	6.5	5.9	5.1	4.3	2.8	*1.8	*5.3
Washington-----	2.8	*3.3	*1.1	*0.5	*2.9	*3.2	5.4	5.0	*4.0	*2.0	*0.9	-
Oregon-----	2.4	*3.7	-	-	*1.9	*4.5	*4.4	*4.7	*2.9	*2.9	-	-
California-----	4.1	5.4	*0.9	0.5	5.6	7.2	5.9	5.1	4.4	3.0	*2.3	*7.5
Alaska-----	8.6	-	-	-	*1.5	*12.5	*23.9	*10.9	*21.6	*19.3	-	-
Hawaii-----	*2.4	-	-	-	*2.3	*3.6	*2.1	*11.2	-	-	-	-

Table 4. Homicide rates, by age, color, and sex: United States, geographic division, and State, 1959-61 (3-year average)—Con.

Color, sex, and geographic area	All ages	Under 1 year	1-4 years	5-14 years	15-24 years	25-34 years	35-44 years	45-54 years	55-64 years	65-74 years	75-84 years	85+ years
<u>White, female</u>	Rate per 100,000 population											
United States----	1.5	3.3	0.7	0.4	1.5	2.3	2.3	1.9	1.3	1.1	1.5	1.6
New England-----	1.0	*3.4	*0.9	*0.1	1.2	1.4	1.1	*0.8	1.3	*0.8	*0.9	*0.7
Maine-----	1.6	*9.2	*0.8	-	*1.5	*3.5	*1.7	*1.2	*2.2	*0.9	*0.0	*7.0
New Hampshire-----	*0.8	-	*1.3	-	*3.4	-	-	*1.9	-	-	-	-
Vermont-----	*0.7	-	*2.0	-	-	*1.5	*1.4	-	-	*2.3	-	-
Massachusetts-----	0.9	*1.9	*0.3	-	*1.2	*1.4	*1.3	*0.7	*1.3	*0.5	*1.7	-
Rhode Island-----	*1.2	*11.5	*3.0	-	-	*0.6	*1.1	*0.6	*3.1	*1.0	-	-
Connecticut-----	0.8	*2.6	*1.0	*0.3	*1.1	*1.1	*0.5	*0.9	*0.9	*1.5	-	-
Middle Atlantic----	1.1	4.6	0.8	0.3	1.2	1.4	1.3	1.2	0.8	0.9	*1.1	*0.9
New York-----	1.0	5.1	*0.5	*0.3	1.4	1.3	1.2	0.9	*0.7	*0.8	*0.8	*1.3
New Jersey-----	1.1	*2.4	*1.5	*0.2	*0.7	*1.5	*1.1	*1.8	*1.0	*0.7	*1.6	-
Pennsylvania-----	1.1	*5.1	*0.8	*0.3	1.2	1.4	1.5	1.2	*0.9	*1.0	*1.2	*0.9
East North Central--	1.3	3.5	0.6	0.4	1.2	1.9	1.7	1.4	1.3	1.1	1.6	*2.7
Ohio-----	1.4	3.7	*1.0	*0.5	1.1	2.0	2.0	*1.3	1.9	*0.9	*1.4	*2.2
Indiana-----	1.2	*3.4	*0.7	*0.2	*0.7	*1.3	*1.9	*1.5	*1.2	*1.4	*3.2	*2.1
Illinois-----	1.3	*4.8	*0.7	*0.5	*0.9	2.4	1.6	1.2	*1.1	*1.4	*0.9	*2.2
Michigan-----	1.3	*2.8	*0.5	*0.6	1.5	1.7	1.6	1.8	*1.1	*0.8	*2.2	*3.5
Wisconsin-----	1.1	*1.5	-	*0.2	*2.0	*1.5	*1.5	*1.8	*0.6	*1.2	*1.1	*5.0
West North Central--	1.1	*2.6	*0.5	*0.3	1.3	1.7	1.6	1.7	1.0	*1.1	*1.0	*0.5
Minnesota-----	0.6	*2.4	*0.2	*0.3	*0.4	*0.7	*0.8	*1.1	*0.6	*0.6	-	-
Iowa-----	1.0	*2.2	*0.6	*0.1	*0.7	*1.7	*1.8	*0.7	*1.5	*0.3	*2.4	*2.5
Missouri-----	1.6	*5.0	*0.4	*0.5	2.6	*2.1	*1.8	*2.2	*1.0	*1.9	*0.8	-
North Dakota-----	*0.3	-	-	-	-	*0.9	-	*2.1	-	-	-	-
South Dakota-----	*1.1	*4.2	*1.1	-	*0.8	*1.8	*2.6	*2.0	-	*1.5	-	-
Nebraska-----	1.1	*2.1	*1.7	*0.5	*1.1	*1.6	*0.8	*1.7	*1.0	*0.6	-	-
Kansas-----	1.6	-	*0.4	*0.2	*1.5	*2.6	*2.5	*2.9	*1.7	*1.7	*1.7	-
South Atlantic-----	2.0	3.5	*0.7	0.4	1.6	3.5	3.8	3.0	1.5	1.4	*2.0	*3.0
Delaware-----	*1.7	-	-	*0.9	-	*1.2	*3.5	*3.2	*2.1	*2.9	-	*28.7
Maryland-----	1.7	*3.5	*0.3	*0.3	*1.2	*2.5	*2.9	*2.5	*1.3	*1.8	*3.0	*9.2
District of Columbia--	*2.3	*12.4	*4.2	-	*2.4	*3.3	*2.8	*3.3	*2.4	-	-	-
Virginia-----	2.3	*5.8	*1.2	*0.3	*2.0	5.0	4.1	*2.3	*0.5	*2.0	*2.5	-
West Virginia-----	1.5	-	*0.9	*0.5	*0.8	*4.5	*2.2	*2.3	-	-	*1.3	*6.4
North Carolina-----	1.6	*1.9	-	*0.4	*1.5	*2.1	3.0	*2.3	*2.2	*1.1	*2.5	-
South Carolina-----	2.1	*2.0	*0.5	-	*2.0	*2.5	*5.5	*3.9	*2.3	*0.9	-	-
Georgia-----	2.3	*3.2	*1.1	*0.1	*1.7	3.8	3.6	4.8	*1.8	*1.7	*0.9	*4.7
Florida-----	2.5	*5.0	*0.8	*0.7	*1.6	4.4	5.0	3.0	*1.8	*1.5	*2.5	-
East South Central--	1.7	*2.4	*0.2	*0.6	1.3	2.6	3.0	2.6	1.7	*1.3	*2.0	*1.2
Kentucky-----	1.7	*1.1	*0.3	*0.6	*1.8	*2.9	*3.2	*3.1	*1.1	*1.1	*1.5	*3.5
Tennessee-----	1.6	*4.4	*0.3	*0.3	*1.0	*1.8	3.3	*2.7	*1.8	*1.4	-	-
Alabama-----	1.8	*1.4	-	*0.9	*1.6	*2.8	*2.6	*2.2	*2.8	*1.0	*5.5	-
Mississippi-----	1.6	*2.5	-	*1.1	*0.4	*3.8	*2.5	*1.8	*1.2	*1.7	*1.7	-
West South Central--	1.9	*2.3	*0.6	*0.3	2.0	3.4	3.4	2.6	1.6	*1.2	*1.4	*2.4
Arkansas-----	1.5	*2.5	-	*0.2	*1.0	*4.5	*0.4	*2.7	*1.0	*0.6	*4.2	*7.0
Louisiana-----	1.7	*2.5	-	*0.1	*2.1	*3.1	*3.8	*1.6	*1.5	*1.1	*1.2	-
Oklahoma-----	1.6	*1.6	*1.2	*0.5	*1.6	*3.1	*1.7	*1.6	*2.9	*0.4	*0.9	*3.8
Texas-----	2.1	*2.4	*0.8	*0.3	2.3	3.3	4.1	3.1	*1.4	*1.6	*0.9	*1.5
Mountain-----	2.3	*1.2	*0.6	*0.8	2.5	2.7	4.7	3.9	*1.6	*1.2	*3.1	-
Montana-----	2.1	-	-	*0.5	*3.1	*0.9	*4.1	*6.8	*1.4	-	-	-
Idaho-----	*1.7	-	-	-	*2.9	*0.9	*4.0	*3.9	*2.8	-	*3.9	-
Wyoming-----	*2.1	-	-	*2.0	*3.1	*1.6	*4.8	*2.0	*2.8	-	-	-
Colorado-----	2.2	*1.7	*0.8	*0.6	*3.1	*3.2	*2.9	*4.0	*1.0	*2.5	*1.3	-
New Mexico-----	3.1	*2.6	*0.7	*1.7	*2.6	*4.4	*7.8	*3.3	*1.3	*2.0	*5.1	-
Arizona-----	2.3	-	*1.2	*0.5	*2.4	*3.1	*5.0	*2.6	*3.0	-	*6.0	-
Utah-----	*1.2	*2.7	-	*0.3	*1.4	*0.6	*3.9	*1.6	-	*1.6	*3.5	-
Nevada-----	*5.0	-	*2.9	*2.7	-	*7.3	*9.9	*10.5	-	-	*14.8	-
Pacific-----	1.9	*3.1	0.9	0.5	2.0	2.7	2.7	2.6	1.8	1.4	*1.9	*1.6
Washington-----	1.3	*3.4	-	*0.2	*0.9	*1.8	*2.1	*1.7	*1.4	*1.5	*2.3	*3.7
Oregon-----	1.2	*1.9	-	*0.6	*1.2	*2.3	*2.8	*1.3	*0.4	-	*1.2	-
California-----	2.0	*3.2	1.2	0.6	2.3	3.0	2.7	2.9	2.1	1.5	*2.0	*1.4
Alaska-----	*3.2	-	-	-	*3.4	*5.0	*5.7	*5.2	*12.3	-	-	-
Hawaii-----	*0.7	-	-	-	-	-	*2.5	*4.3	-	-	-	-

Table 4. Homicide rates, by age, color, and sex: United States, geographic division, and State, 1959-61 (3-year average)—Con.

Color, sex, and geographic area	All ages	Under 1 year	1-4 years	5-14 years	15-24 years	25-34 years	35-44 years	45-54 years	55-64 years	65-74 years	75-84 years	85+ years
Nonwhite, both sexes	Rate per 100,000 population											
United States----	21.3	9.7	1.7	1.1	27.1	49.5	44.0	30.0	17.7	10.9	9.3	9.8
New England-----	9.4	*7.6	*3.2	*0.6	*9.2	19.4	18.6	*11.8	*6.4	-	*8.6	-
Maine-----	-	-	-	-	-	-	-	-	-	-	-	-
New Hampshire-----	-	-	-	-	-	-	-	-	-	-	-	-
Vermont-----	-	-	-	-	-	-	-	-	-	-	-	-
Massachusetts-----	7.4	*8.7	*2.4	*1.3	*9.3	*14.6	*13.7	*9.3	-	-	*14.6	-
Rhode Island-----	*6.4	*8.6	*2.3	*0.9	-	*10.3	*27.3	-	*28.4	-	-	-
Connecticut-----	12.9	*8.7	*4.9	-	*12.4	*28.2	*23.7	*16.9	*10.9	-	-	-
Middle Atlantic-----	17.9	24.9	3.4	1.5	20.5	33.5	30.0	22.5	14.3	11.2	*13.4	*14.5
New York-----	19.3	30.6	*2.9	*1.1	21.2	34.3	33.5	24.4	13.1	*11.1	*8.4	*11.2
New Jersey-----	14.3	*8.6	*2.3	*0.9	15.6	29.1	22.4	19.3	*15.8	*10.5	*20.5	*24.7
Pennsylvania-----	17.8	*26.0	*4.8	*2.4	22.4	34.9	27.9	21.1	15.3	*11.7	*16.1	*13.1
East North Central--	22.2	8.9	2.7	*1.0	26.5	46.0	43.2	30.8	23.5	12.7	*8.4	*13.1
Ohio-----	21.7	*11.6	*1.8	*1.0	21.2	46.9	45.3	29.2	19.3	*13.7	*12.5	*14.3
Indiana-----	23.6	-	*1.0	*0.5	33.1	51.7	46.5	24.8	34.7	*14.6	*16.2	*38.1
Illinois-----	25.0	*11.5	*3.1	*1.0	32.3	48.2	48.2	35.6	27.9	*14.6	*2.5	*11.8
Michigan-----	19.3	*4.9	*3.1	*1.0	23.4	42.7	34.0	29.0	17.9	*8.4	*9.7	-
Wisconsin-----	14.0	*9.5	*7.4	*2.9	*10.1	*23.8	*36.8	*19.8	*16.4	-	-	-
West North Central--	24.3	*11.3	*0.4	*1.9	26.4	58.2	59.8	33.1	14.9	*13.2	*10.1	*21.8
Minnesota-----	*15.0	-	-	-	*11.2	*26.8	*67.0	*9.5	-	-	*49.1	-
Iowa-----	*9.3	*37.6	-	-	-	*33.9	*20.2	*12.8	-	-	-	-
Missouri-----	27.7	*16.3	-	*2.4	30.7	67.1	60.4	40.9	*18.5	*15.8	*7.9	*35.5
North Dakota-----	*23.2	-	*17.2	-	*15.1	*87.3	*89.0	-	-	-	-	-
South Dakota-----	*19.5	-	-	*4.6	*26.9	*20.3	*92.8	-	*22.8	*35.3	-	-
Nebraska-----	34.6	-	-	-	*19.1	*91.8	*72.5	*88.2	*28.8	*21.3	-	-
Kansas-----	17.0	-	-	*1.6	*29.1	*39.1	*50.7	*3.7	*4.3	*5.9	*14.1	-
South Atlantic-----	23.9	9.9	1.4	1.0	30.0	62.7	52.4	34.2	15.8	11.0	8.5	*5.1
Delaware-----	20.4	*17.5	*9.1	-	*27.5	*48.4	*37.6	*25.9	*7.7	-	*33.6	-
Maryland-----	18.9	*13.0	*0.6	*1.4	25.8	38.3	42.0	23.7	*11.5	*12.2	*4.9	-
District of Columbia--	16.4	*17.2	*3.0	*0.8	15.5	33.3	33.5	19.1	*9.8	*9.6	-	-
Virginia-----	19.4	*16.1	*1.8	*1.0	23.9	50.8	35.5	26.9	14.4	*8.8	*12.2	*11.3
West Virginia-----	15.5	-	-	*1.6	*20.1	*25.2	*52.1	*29.1	*3.4	*10.3	*15.5	-
North Carolina-----	24.3	*7.9	*1.0	*0.8	29.0	75.8	53.9	34.5	17.4	*10.6	*6.4	-
South Carolina-----	18.5	*6.6	-	*0.8	27.7	57.3	44.0	27.1	*9.6	*4.9	*2.9	-
Georgia-----	26.6	*8.8	*1.3	*1.2	36.7	71.5	63.1	38.9	13.9	*10.9	*12.2	*7.4
Florida-----	36.8	*6.9	*2.5	*0.8	40.0	87.6	80.7	55.9	30.9	21.7	*8.7	*12.7
East South Central--	22.1	*2.8	*0.7	1.3	32.2	57.8	52.3	35.1	20.6	11.6	*8.7	*12.0
Kentucky-----	29.0	-	-	*1.5	32.2	61.3	64.4	55.6	*23.7	*22.7	*5.6	*24.2
Tennessee-----	24.0	*1.9	-	-	29.6	61.3	65.0	33.8	20.1	*10.5	*2.7	*22.1
Alabama-----	23.5	*4.5	*1.2	*1.2	35.6	65.8	49.4	36.3	21.7	*7.9	*6.8	*7.3
Mississippi-----	17.9	*2.2	*0.9	*2.0	30.3	44.0	41.7	28.9	18.8	*12.8	*15.1	*6.7
West South Central--	23.2	*6.8	*1.4	1.0	32.4	65.3	50.0	30.8	20.2	11.1	*9.1	*4.7
Arkansas-----	19.3	*2.7	*1.4	*0.7	26.3	62.6	53.1	24.6	24.7	*7.7	*6.4	-
Louisiana-----	18.2	*5.0	*0.5	*1.0	29.2	54.6	38.0	20.1	14.9	*9.7	*9.8	*6.8
Oklahoma-----	20.7	*5.1	*1.3	*0.6	24.5	48.5	50.5	34.0	*18.8	*18.4	*17.4	-
Texas-----	29.3	*10.3	*2.2	*1.2	38.7	76.2	58.3	40.7	23.0	12.2	*7.5	*6.0
Mountain-----	21.9	*7.6	-	*1.6	27.4	42.6	53.1	41.3	*27.0	*18.9	*7.8	*27.4
Montana-----	*16.6	-	-	-	*25.5	*45.6	*29.6	*20.3	*0.0	*44.2	-	*347.2
Idaho-----	*23.8	-	-	-	-	*51.3	*88.7	*47.1	-	-	-	-
Wyoming-----	*42.0	-	-	-	*92.7	*141.2	*85.6	-	-	-	-	-
Colorado-----	30.0	-	-	*6.1	*30.1	*58.9	*70.5	*39.4	*11.2	*32.7	-	-
New Mexico-----	12.8	-	-	*1.6	*28.3	*13.3	*18.8	*26.9	*49.8	-	-	-
Arizona-----	23.4	*12.1	-	*1.0	*28.2	45.8	59.6	*53.1	*29.3	*24.3	-	-
Utah-----	*7.9	-	-	-	-	*13.7	*31.5	-	*39.1	-	-	-
Nevada-----	33.6	*41.3	-	-	*26.7	*57.9	*80.6	*73.5	*29.7	-	*194.9	-
Pacific-----	13.5	*3.7	*1.6	*1.2	15.0	24.9	28.3	19.1	12.3	*3.9	*10.3	*15.5
Washington-----	16.1	*10.2	-	-	*14.1	*30.0	*40.3	*29.3	*11.7	-	*24.6	-
Oregon-----	27.3	-	-	-	*19.7	*71.6	*80.4	*27.4	*14.5	-	-	-
California-----	16.4	*3.6	*1.7	*1.6	20.4	29.7	33.0	20.8	15.3	*4.2	*11.7	*25.8
Alaska-----	12.9	-	-	-	*7.2	*13.0	*60.6	*48.6	*18.4	-	-	-
Hawaii-----	3.3	*3.0	*2.3	*0.7	*1.1	*5.0	*4.4	*8.6	*3.5	*4.6	*5.5	-

Table 4. Homicide rates, by age, color, and sex: United States, geographic division, and State, 1959-61 (3-year average)—Con.

Color, sex, and geographic area	All ages	Under 1 year	1-4 years	5-14 years	15-24 years	25-34 years	35-44 years	45-54 years	55-64 years	65-74 years	75-84 years	85+ years
Rate per 100,000 population												
<u>Nonwhite, male</u>												
United States---	34.0	9.9	1.7	1.4	43.9	81.4	71.6	50.7	29.7	19.4	16.0	*17.0
New England-----	11.1	*7.5	*4.2	*1.2	*11.9	*25.4	*18.6	*9.1	*8.5	-	*18.7	-
Maine-----	-	-	-	-	-	-	-	-	-	-	-	-
New Hampshire-----	-	-	-	-	-	-	-	-	-	-	-	-
Vermont-----	-	-	-	-	-	-	-	-	-	-	-	-
Massachusetts-----	*10.2	*17.1	*4.8	*2.7	*11.2	*19.7	*15.5	*12.6	-	-	*31.4	-
Rhode Island-----	*6.3	-	-	-	-	*20.4	-	-	*57.7	-	-	-
Connecticut-----	14.0	-	*4.8	*0.0	*18.2	*35.5	*26.2	*7.1	*11.1	-	-	-
Middle Atlantic-----	28.7	28.8	*3.8	*1.3	36.1	53.9	49.0	41.1	24.4	20.4	*21.7	*25.1
New York-----	32.2	35.0	*4.9	*1.0	39.8	56.6	55.5	46.0	23.9	*22.8	*14.9	*30.4
New Jersey-----	21.2	*4.3	*2.3	*1.3	23.8	43.9	34.1	29.4	*26.8	*14.8	*45.8	-
Pennsylvania-----	27.6	*34.7	*3.0	*1.9	37.8	55.4	45.7	39.1	23.9	*20.0	*17.6	*32.9
East North Central--	35.2	*7.4	*2.3	*1.4	44.4	76.4	69.2	49.3	36.3	22.1	*16.2	*20.3
Ohio-----	33.0	*5.8	*1.5	*2.0	33.0	75.7	65.6	48.8	27.4	*25.7	*26.9	*31.9
Indiana-----	40.0	-	-	*1.1	56.6	96.1	78.9	*40.6	*58.4	*23.6	*16.6	*90.1
Illinois-----	41.2	*9.7	*3.1	*1.2	58.5	84.2	81.7	55.8	44.8	*25.2	*5.6	-
Michigan-----	29.3	*6.5	*2.3	*1.2	34.9	65.6	54.6	46.3	27.6	*14.0	*20.9	-
Wisconsin-----	18.7	*19.8	*4.9	*3.0	*16.1	*26.8	*59.8	*28.3	*15.2	-	-	-
West North Central--	39.5	*6.4	*0.9	*2.9	42.3	96.0	102.1	56.3	*24.9	*26.7	*20.8	*24.5
Minnesota-----	*20.2	-	-	-	*11.5	*32.0	*88.8	*17.6	-	-	*99.5	-
Iowa-----	*14.2	-	-	-	-	*53.4	*41.1	*26.7	-	-	-	-
Missouri-----	46.2	*10.8	-	*4.0	53.9	115.6	107.9	69.2	*31.7	*32.6	*16.5	*40.5
North Dakota-----	*30.4	-	*35.3	-	-	*131.8	*121.7	-	-	-	-	-
South Dakota-----	*24.1	-	-	-	-	*43.1	*157.2	-	*41.4	*63.5	-	-
Nebraska-----	59.7	-	-	-	*36.0	*148.1	*131.9	*178.7	*29.0	*41.5	-	-
Kansas-----	27.4	-	-	*3.3	*51.2	*59.2	*78.4	-	*8.9	*11.7	*28.9	-
South Atlantic-----	37.6	9.2	*1.5	1.4	47.3	101.7	82.3	58.7	26.2	19.8	*16.1	*12.0
Delaware-----	28.0	-	*9.0	-	*31.4	*66.8	*51.0	*51.0	*14.9	-	*64.1	-
Maryland-----	28.6	*13.0	-	*1.7	40.1	60.2	61.3	37.9	*16.8	*24.9	*10.4	-
District of Columbia--	24.5	*17.0	*2.9	*0.8	26.2	48.8	49.0	35.2	*15.2	*16.1	-	-
Virginia-----	29.8	*11.8	*1.5	*1.7	36.9	79.8	51.6	45.3	26.2	*16.4	*20.7	*24.8
West Virginia-----	21.3	-	-	*3.1	*30.2	*52.0	*55.6	*41.5	*6.8	*18.4	*29.5	-
North Carolina-----	39.2	*12.1	*1.0	*1.3	45.4	130.6	86.2	58.7	30.0	*19.7	*14.1	-
South Carolina-----	29.7	*5.3	-	*0.8	46.7	91.7	73.1	52.2	*15.1	*6.7	-	-
Georgia-----	43.2	*7.9	*0.5	*1.6	61.8	119.7	107.2	69.2	*19.7	*16.7	*28.8	*17.9
Florida-----	56.9	*4.6	*4.3	*1.3	55.9	137.2	126.6	91.0	52.7	*41.5	*11.8	*27.8
East South Central--	36.6	*3.2	*0.6	*1.6	51.9	101.2	94.0	62.6	37.6	19.8	*13.5	*21.7
Kentucky-----	45.4	-	-	*1.5	47.4	90.9	100.3	92.6	*45.5	*47.5	*11.7	-
Tennessee-----	40.1	*3.9	-	-	43.2	107.6	115.0	58.7	42.4	*19.8	*5.7	*49.2
Alabama-----	39.1	*6.8	*0.0	*1.1	57.8	118.8	90.1	67.2	39.3	*11.6	*7.5	*18.0
Mississippi-----	29.7	-	*1.7	*3.2	51.6	77.2	79.1	51.7	29.9	*19.6	*24.1	*14.5
West South Central--	38.9	*7.6	*1.8	*1.1	53.7	115.6	87.0	54.9	36.9	20.0	*16.5	*5.3
Arkansas-----	32.1	*5.5	*2.9	*0.7	42.4	116.5	93.5	40.1	47.7	*12.9	*12.5	-
Louisiana-----	29.9	*8.0	*1.1	*1.3	47.5	96.1	66.2	34.0	26.4	*16.9	*17.5	-
Oklahoma-----	34.7	*10.2	-	*1.3	*36.4	88.6	78.6	73.3	*27.6	*37.8	*35.8	-
Texas-----	49.5	*7.5	*2.4	*1.0	66.1	133.3	102.4	72.5	43.2	*21.9	*12.6	*13.9
Mountain-----	33.8	*15.1	-	*0.8	42.1	62.3	86.1	58.2	*46.4	*34.1	*13.8	*53.3
Montana-----	*26.9	-	-	-	*49.2	*67.9	*28.9	*37.4	-	*79.6	-	*724.6
Idaho-----	*39.0	-	-	-	-	*50.4	*165.3	*81.3	-	-	-	-
Wyoming-----	*72.7	-	-	-	*169.8	*221.2	*171.4	-	-	-	-	-
Colorado-----	45.9	-	-	*6.0	*57.3	*73.7	*112.5	*60.7	*23.7	*65.5	-	-
New Mexico-----	17.8	-	-	-	*31.3	*20.8	*27.9	*39.6	*91.3	-	-	-
Arizona-----	35.8	*24.1	-	-	*44.2	*65.7	*98.4	*75.9	*43.7	*42.1	-	-
Utah-----	*15.3	-	-	-	-	*26.8	*58.3	-	*73.1	-	-	-
Nevada-----	*53.5	*86.1	-	-	*34.7	*115.6	*126.5	*67.8	*50.0	-	*350.9	-
Pacific-----	19.5	*3.6	*0.6	*1.5	21.2	37.1	43.5	27.5	17.1	*6.3	*10.5	*29.7
Washington-----	22.9	-	-	-	*17.2	*39.0	*58.5	*47.6	*19.6	-	*38.1	-
Oregon-----	45.8	-	-	-	*39.0	*106.5	*144.9	*48.1	*25.1	-	-	-
California-----	24.1	*5.4	*0.9	*2.0	29.6	45.2	50.1	30.3	21.4	*8.1	*12.8	*53.3
Alaska-----	*13.3	-	-	-	-	*16.1	*74.9	*34.4	*31.5	-	-	-
Hawaii-----	4.1	-	-	*0.7	*1.1	*4.7	*8.7	*13.8	*3.9	*4.1	-	-

Table 4. Homicide rates, by age, color, and sex: United States, geographic division, and State, 1959-61 (3-year average)—Con.

Color, sex, and geographic area	All ages	Under 1 year	1-4 years	5-14 years	15-24 years	25-34 years	35-44 years	45-54 years	55-64 years	65-74 years	75-84 years	85+ years
Rate per 100,000 population												
Nonwhite, female												
United States----	9.4	9.4	1.8	0.9	11.5	21.9	19.2	10.3	6.1	3.2	*3.4	*4.1
New England-----	7.7	*7.8	*2.1	-	*6.6	*13.4	*18.6	*14.3	*4.3	-	-	-
Maine-----	-	-	-	-	-	-	-	-	-	-	-	-
New Hampshire-----	-	-	-	-	-	-	-	-	-	-	-	-
Vermont-----	-	-	-	-	-	-	-	-	-	-	-	-
Massachusetts-----	*4.8	-	-	-	*7.4	*9.7	*11.8	*6.1	-	-	-	-
Rhode Island-----	*6.5	-	-	-	-	-	*55.1	-	-	-	-	-
Connecticut-----	11.7	*17.7	*4.9	-	*7.6	*21.0	*21.3	*25.9	*10.8	-	-	-
Middle Atlantic-----	8.2	21.0	*2.9	*1.6	7.5	16.5	13.4	6.1	*4.6	*3.0	*6.8	*7.9
New York-----	7.9	*26.2	*0.9	*1.2	6.2	16.1	14.8	*5.6	*3.0	*1.2	*3.6	-
New Jersey-----	7.9	*13.0	*2.3	*0.6	*8.4	16.2	*11.5	*9.9	*5.4	*6.7	-	*41.5
Pennsylvania-----	8.8	*17.3	*6.6	*3.0	*9.2	17.6	12.0	*4.8	*6.7	*3.5	*4.8	-
East North Central--	9.9	*10.3	*3.2	*0.6	11.3	19.3	18.7	12.4	10.1	*3.6	*1.7	*7.7
Ohio-----	11.0	*17.2	*2.2	-	*10.9	21.7	26.2	*9.9	*10.7	*2.1	-	-
Indiana-----	8.1	-	*2.0	-	*12.5	*12.9	*16.5	*9.7	*10.5	*5.8	*15.9	-
Illinois-----	9.9	*13.3	*3.1	*0.9	10.5	16.8	17.4	16.2	*10.9	*4.9	-	*20.4
Michigan-----	9.6	*3.2	*3.9	*0.8	13.7	22.6	14.0	*10.8	*7.2	*2.8	-	-
Wisconsin-----	*9.3	-	*10.0	*2.9	*4.8	*21.0	*12.6	*10.4	*17.8	-	-	-
West North Central--	10.0	*16.2	-	*1.0	*11.1	25.2	22.0	*11.4	*5.3	-	-	*19.6
Minnesota-----	*9.6	-	-	-	*10.9	*21.6	*42.6	-	-	-	-	-
Iowa-----	*4.5	*74.6	-	-	-	*16.1	-	-	-	-	-	-
Missouri-----	10.8	*21.9	-	*0.8	*9.9	27.7	*20.6	*15.3	*6.0	-	-	*31.6
North Dakota-----	*15.8	-	-	-	*33.4	*43.3	*57.9	-	-	-	-	-
South Dakota-----	*14.7	-	-	*8.9	*56.0	-	*26.8	-	-	-	-	-
Nebraska-----	*9.2	-	-	-	-	*36.4	*15.7	-	*28.5	-	-	-
Kansas-----	*6.7	-	-	-	*4.7	*19.4	*23.6	*7.3	-	-	-	-
South Atlantic-----	11.0	10.6	*1.4	*0.5	13.2	28.7	25.7	11.5	6.4	*3.6	*2.1	-
Delaware-----	*12.9	*34.4	*9.1	-	*23.5	*31.2	*24.6	-	*5.9	-	-	-
Maryland-----	9.5	*13.0	*1.1	*1.1	*12.2	18.4	23.4	*9.1	*5.9	-	-	-
District of Columbia--	9.0	*17.3	*3.0	*0.8	*6.6	19.4	20.0	*4.1	*4.7	*4.3	-	-
Virginia-----	9.2	*20.4	*2.2	*0.3	10.9	24.0	19.8	*8.3	*3.5	*1.7	*4.6	-
West Virginia-----	*10.1	-	-	-	*10.9	*7.0	*49.4	*18.3	-	-	-	-
North Carolina-----	10.2	*3.9	*1.0	*0.2	12.5	29.3	25.4	12.2	*6.4	*2.8	-	-
South Carolina-----	8.1	*7.8	-	*0.8	*8.7	29.3	19.3	*5.4	*5.3	*3.5	*5.2	-
Georgia-----	11.6	*9.7	*2.1	*0.7	12.7	31.9	26.9	13.1	*9.2	*6.7	-	-
Florida-----	17.3	*9.2	*0.6	*0.3	24.6	40.7	38.4	21.6	*9.5	*3.9	*5.7	-
East South Central--	8.8	*2.4	*0.8	*0.9	13.5	23.9	18.7	11.1	*5.4	*4.3	*4.4	*4.3
Kentucky-----	13.4	-	-	*1.5	*16.4	*35.1	*32.3	*21.8	*3.3	-	-	*44.5
Tennessee-----	9.4	-	-	-	17.1	24.7	23.4	*12.1	-	*2.0	-	-
Alabama-----	9.3	*2.2	*2.3	*1.3	14.6	24.9	16.9	*9.8	*6.5	*4.8	*6.3	-
Mississippi-----	6.8	*4.3	-	*0.8	9.7	18.9	*13.1	*9.0	*8.9	*6.5	*6.5	-
West South Central--	8.6	*6.1	*1.0	*1.0	12.1	23.4	18.6	9.4	*4.6	*3.0	*2.2	*4.2
Arkansas-----	7.4	-	-	*0.7	*10.8	*21.4	*21.9	*11.4	*3.9	*2.5	-	-
Louisiana-----	7.4	*2.0	-	*0.8	12.2	20.9	14.4	*7.8	*4.5	*3.6	*3.0	*11.9
Oklahoma-----	7.6	-	*2.7	-	*12.7	*15.6	*27.2	-	*10.8	-	-	-
Texas-----	10.3	*13.1	*2.0	*1.5	12.3	27.0	19.6	11.7	*3.7	*3.2	*2.9	-
Mountain-----	9.7	-	-	*2.3	*12.3	*23.7	*18.9	*22.5	*4.2	-	-	-
Montana-----	*5.7	-	-	-	-	*23.0	*30.4	-	-	-	-	-
Idaho-----	*7.1	-	-	-	-	*52.3	-	-	-	-	-	-
Wyoming-----	*9.6	-	-	-	-	*67.8	-	-	-	-	-	-
Colorado-----	*13.9	-	-	*6.1	-	*44.1	*28.3	*16.4	-	-	-	-
New Mexico-----	*7.9	-	-	*3.1	*25.3	*6.4	*9.5	*13.7	-	-	-	-
Arizona-----	10.7	-	-	*1.9	*12.4	*27.0	*20.7	*27.9	*11.0	-	-	-
Utah-----	-	-	-	-	-	-	-	-	-	-	-	-
Nevada-----	*12.6	-	-	-	*18.3	-	*28.7	*80.4	-	-	-	-
Pacific-----	7.1	*3.7	*2.6	*1.0	8.6	13.4	12.8	*7.9	*6.0	*1.2	*10.1	-
Washington-----	*8.4	*19.6	-	-	*10.4	*21.2	*20.0	-	-	-	-	-
Oregon-----	*7.5	-	-	-	-	*38.3	*13.6	-	-	-	-	-
California-----	8.4	*1.8	*2.4	*1.3	11.0	14.8	15.7	*9.3	*7.6	-	*10.3	-
Alaska-----	*12.5	-	-	-	*16.5	*9.4	*43.8	*67.2	-	-	-	-
Hawaii-----	*2.3	*6.0	*4.7	*0.7	*1.1	*5.3	-	-	*2.9	*5.2	*13.0	-

Table 5. Age-specific and age-adjusted homicide rates, by color, sex, and marital status: United States, 1959-61 (3-year average)

Marital status and age	Total			White			Nonwhite		
	Both sexes	Male	Female	Both sexes	Male	Female	Both sexes	Male	Female
Rate per 100,000 population									
<u>All marital status groups</u>									
15 years and over--	6.3	9.8	3.0	3.3	4.8	1.8	32.9	54.0	13.6
15-19 years-----	3.7	5.5	1.9	2.0	2.9	1.1	16.1	25.2	7.1
20-24 years-----	8.3	13.1	3.8	3.8	5.8	1.9	40.6	67.4	16.6
25-29 years-----	9.6	14.8	4.6	4.2	6.3	2.2	49.1	81.1	21.2
30-34 years-----	9.2	13.8	4.8	3.9	5.6	2.3	50.3	82.7	22.7
35-39 years-----	8.5	12.9	4.4	4.1	5.8	2.4	45.9	74.5	20.6
40-44 years-----	7.6	11.5	3.8	3.7	5.3	2.2	42.0	69.3	17.5
45-49 years-----	6.7	10.5	3.0	3.7	5.4	2.1	33.5	57.5	11.3
50-54 years-----	5.4	8.5	2.5	3.3	4.9	1.8	25.7	43.2	8.9
55-59 years-----	4.4	6.9	1.9	2.9	4.5	1.4	18.1	29.3	7.2
60-64 years-----	3.6	6.1	1.4	2.5	3.9	1.2	16.3	29.4	4.1
65-69 years-----	2.9	5.1	1.1	2.1	3.5	0.9	12.4	22.2	3.6
70-74 years-----	2.8	4.4	1.5	2.4	3.4	1.4	8.7	15.5	2.6
75-79 years-----	2.6	4.1	1.5	2.1	3.1	1.3	9.2	15.5	3.5
80-84 years-----	2.7	3.8	2.0	2.3	2.7	1.9	9.9	18.2	3.1
85 years and over-----	2.8	4.1	1.9	2.1	2.7	1.8	10.5	18.5	4.4
Age-adjusted, 15 and over--	6.6	10.2	3.2	3.3	4.9	1.8	33.2	55.0	13.6
<u>Single</u>									
15 years and over--	7.5	11.6	2.3	3.3	5.1	1.0	37.3	57.2	11.6
15-19 years-----	3.5	5.2	1.4	1.9	2.7	0.9	14.9	23.6	5.1
20-24 years-----	10.1	13.8	3.4	4.3	5.9	1.3	46.0	67.5	14.9
25-29 years-----	18.2	24.2	6.9	6.3	8.5	1.9	79.2	112.3	28.3
30-34 years-----	19.8	28.1	6.1	6.5	9.5	1.5	90.0	129.7	29.4
35-39 years-----	17.0	25.7	5.0	6.7	10.4	1.7	78.1	113.0	26.1
40-44 years-----	13.9	23.2	3.2	5.1	8.9	0.8	78.2	119.8	21.8
45-49 years-----	9.2	16.1	1.9	4.2	7.8	0.5	51.7	77.3	16.1
50-54 years-----	7.3	13.2	1.5	4.0	7.4	0.8	38.4	57.7	10.4
55-59 years-----	4.0	7.5	0.6	2.9	5.6	0.5	13.3	20.7	2.3
60-64 years-----	4.7	9.1	0.6	3.6	7.0	0.6	18.9	31.0	0.0
65-69 years-----	3.7	7.1	0.9	2.9	5.2	0.9	17.1	28.6	0.0
70-74 years-----	3.7	7.0	1.1	3.4	6.4	1.1	8.9	15.6	0.0
75-79 years-----	3.5	7.0	0.9	2.9	5.8	0.9	14.6	25.9	0.0
80-84 years-----	3.8	6.3	2.4	2.9	3.7	2.4	26.9	51.6	0.0
85 years and over-----	3.1	5.6	2.0	3.3	6.0	2.0	0.0	0.0	0.0
Age-adjusted, 15 and over--	10.7	16.3	3.2	4.5	7.1	1.1	50.2	74.3	15.3
<u>Married</u>									
15 years and over--	5.3	7.7	2.9	2.8	3.8	1.7	29.3	45.8	13.7
15-19 years-----	5.5	11.5	4.0	3.0	5.8	2.3	23.3	54.9	16.0
20-24 years-----	6.6	11.3	3.5	3.1	5.1	1.9	33.7	62.0	16.6
25-29 years-----	7.0	10.7	3.8	3.2	4.7	1.9	37.8	62.7	18.5
30-34 years-----	6.8	10.0	3.9	3.0	4.1	2.0	39.1	63.5	19.2
35-39 years-----	6.5	9.6	3.6	3.2	4.4	2.0	36.7	58.2	17.4
40-44 years-----	5.7	8.5	3.0	2.9	4.0	1.8	33.1	52.9	14.3
45-49 years-----	5.2	8.0	2.4	3.0	4.2	1.8	26.9	45.0	8.1
50-54 years-----	4.2	6.2	2.0	2.6	3.7	1.5	20.7	31.9	7.9
55-59 years-----	3.6	5.2	1.8	2.3	3.3	1.2	16.7	24.1	7.5
60-64 years-----	2.8	4.1	1.3	1.9	2.6	1.1	14.1	21.9	3.5
65-69 years-----	2.5	3.6	0.9	1.8	2.6	0.8	10.7	15.8	2.9
70-74 years-----	2.4	2.9	1.6	1.9	2.1	1.5	8.9	12.1	2.8
75-79 years-----	2.3	2.7	1.4	1.9	2.1	1.4	7.8	10.5	1.3
80-84 years-----	2.1	2.2	1.9	1.8	1.7	2.0	7.4	9.9	0.0
85 years and over-----	2.1	1.5	3.8	1.5	0.6	4.2	8.4	10.8	0.0
Age-adjusted, 15 and over--	5.4	8.6	3.0	2.8	4.2	1.8	28.0	47.9	13.1

Table 5. Age-specific and age-adjusted homicide rates, by color, sex, and marital status: United States, 1959-61 (3-year average)—Con.

Marital status and age	Total			White			Nonwhite		
	Both sexes	Male	Female	Both sexes	Male	Female	Both sexes	Male	Female
Rate per 100,000 population									
<u>Widowed</u>									
15 years and over--	5.1	13.9	2.9	2.8	6.6	1.8	21.8	59.3	10.6
15-19 years-----	25.5	37.4	21.0	13.9	26.0	9.4	58.0	66.1	54.6
20-24 years-----	25.7	41.8	21.3	12.7	9.5	13.7	57.9	131.6	39.5
25-29 years-----	36.5	94.3	21.6	9.5	14.4	8.1	93.2	309.5	48.3
30-34 years-----	31.7	87.0	18.9	11.7	27.0	7.9	75.5	238.1	42.0
35-39 years-----	25.8	73.6	15.7	10.9	20.7	8.9	66.0	203.6	34.3
40-44 years-----	17.1	44.7	11.6	5.7	8.8	5.1	53.7	139.8	33.2
45-49 years-----	11.0	36.5	5.9	4.1	10.1	3.0	37.1	119.1	17.4
50-54 years-----	7.8	29.2	3.6	3.8	10.7	2.5	26.5	93.4	9.0
55-59 years-----	5.7	21.2	2.6	3.3	11.5	1.7	18.3	58.2	7.3
60-64 years-----	4.1	14.9	1.8	2.7	9.6	1.3	13.3	42.7	4.9
65-69 years-----	3.0	9.8	1.3	2.0	6.3	1.0	10.4	30.7	4.1
70-74 years-----	2.7	7.3	1.4	2.3	5.9	1.3	6.7	18.2	2.7
75-79 years-----	2.5	5.8	1.4	1.9	4.1	1.2	9.2	22.2	4.1
80-84 years-----	2.4	3.9	1.9	2.0	2.7	1.7	8.4	19.8	3.9
85 years and over-----	2.7	5.1	1.8	2.1	3.7	1.5	9.9	21.0	5.1
Age-adjusted, 15 and over--	19.9	48.2	13.2	8.2	14.8	6.5	51.1	139.9	30.6
<u>Divorced</u>									
15 years and over--	21.8	38.8	9.8	15.5	26.8	7.5	64.7	129.7	25.0
15-19 years-----	13.7	30.4	9.4	12.3	27.0	8.6	27.0	60.1	17.4
20-24 years-----	20.1	31.4	14.2	14.7	21.8	10.8	65.8	141.4	39.0
25-29 years-----	29.6	52.0	15.1	24.4	41.1	12.7	60.0	139.4	26.6
30-34 years-----	32.7	56.8	16.6	20.8	34.4	11.3	91.9	194.6	39.9
35-39 years-----	28.5	52.7	13.0	18.3	33.0	8.6	82.0	165.4	34.9
40-44 years-----	28.2	52.4	12.5	20.0	34.9	10.2	76.6	164.6	25.8
45-49 years-----	23.8	45.0	9.4	16.5	30.1	7.1	71.3	147.8	23.4
50-54 years-----	18.8	35.1	7.0	14.5	26.1	6.2	51.3	105.0	13.7
55-59 years-----	12.8	23.8	4.5	11.3	20.7	4.1	25.5	48.6	7.3
60-64 years-----	12.0	23.2	3.0	9.4	17.5	2.9	39.4	79.9	3.2
65-69 years-----	7.8	15.5	1.1	4.8	10.0	0.4	40.6	71.1	9.6
70-74 years-----	7.4	13.8	1.3	6.6	12.1	1.4	17.4	33.7	0.0
75-79 years-----	6.9	8.5	5.3	6.8	7.9	5.6	8.8	15.4	0.0
80-84 years-----	16.1	21.9	9.9	15.6	20.6	10.5	21.5	35.4	0.0
85 years and over-----	11.1	21.6	0.0	4.0	7.8	0.0	87.7	175.0	0.0
Age-adjusted, 15 and over--	21.5	39.2	10.6	15.9	27.9	8.3	57.9	122.2	23.5

Table 6. Homicide rates for metropolitan and nonmetropolitan counties, by color and sex: United States and geographic division, 1959-61 (3-year average)

Area	Total			White			Nonwhite		
	Both sexes	Male	Female	Both sexes	Male	Female	Both sexes	Male	Female
Rate per 100,000 population									
<u>United States</u>									
Total-----	4.7	7.0	2.4	2.5	3.6	1.5	21.3	34.0	9.4
Metropolitan-----	4.8	7.2	2.5	2.5	3.5	1.5	22.3	35.7	9.9
Nonmetropolitan-----	4.4	6.7	2.2	2.6	3.7	1.4	19.5	30.9	8.5
<u>New England</u>									
Total-----	1.4	1.6	1.1	1.2	1.4	1.0	9.4	11.1	7.7
Metropolitan-----	1.3	1.7	1.0	1.1	1.3	0.8	10.0	12.4	7.6
Nonmetropolitan-----	1.5	1.6	1.4	1.5	1.6	1.3	3.8	0.0	8.4
<u>Middle Atlantic</u>									
Total-----	3.0	4.4	1.7	1.6	2.2	1.1	17.9	28.7	8.2
Metropolitan-----	3.3	5.0	1.8	1.7	2.4	1.1	18.2	29.3	8.3
Nonmetropolitan-----	1.6	2.0	1.2	1.2	1.4	1.1	13.3	20.0	5.7
<u>East North Central</u>									
Total-----	3.6	5.3	2.0	1.9	2.6	1.3	22.2	35.2	9.9
Metropolitan-----	4.5	6.8	2.3	2.2	3.1	1.3	22.6	35.9	10.1
Nonmetropolitan-----	1.7	2.2	1.2	1.4	1.8	1.1	17.3	26.4	7.5
<u>West North Central</u>									
Total-----	2.6	3.8	1.5	1.7	2.3	1.1	24.3	39.5	10.0
Metropolitan-----	3.9	5.8	2.1	2.2	3.0	1.5	26.2	43.3	10.6
Nonmetropolitan-----	1.6	2.3	1.0	1.3	1.8	0.9	19.0	29.2	8.1
<u>South Atlantic</u>									
Total-----	8.2	12.5	4.1	3.6	5.2	2.0	23.9	37.6	11.0
Metropolitan-----	8.2	12.4	4.2	3.2	4.5	2.0	26.5	42.1	12.1
Nonmetropolitan-----	8.3	12.6	4.0	4.0	5.9	2.0	21.6	33.7	10.0
<u>East South Central</u>									
Total-----	8.3	13.5	3.3	4.3	7.0	1.7	22.1	36.6	8.8
Metropolitan-----	9.1	14.7	4.0	3.8	6.0	1.7	26.1	43.1	11.0
Nonmetropolitan-----	7.9	12.8	3.0	4.6	7.5	1.7	19.6	32.7	7.4
<u>West South Central</u>									
Total-----	7.3	11.6	3.0	4.0	6.2	1.9	23.2	38.9	8.6
Metropolitan-----	8.4	13.4	3.5	4.6	7.1	2.2	28.2	48.0	10.0
Nonmetropolitan-----	6.0	9.5	2.6	3.3	5.1	1.5	18.2	29.8	7.2
<u>Mountain</u>									
Total-----	4.4	6.2	2.6	3.5	4.7	2.3	21.9	33.8	9.7
Metropolitan-----	4.7	6.6	2.8	3.6	4.9	2.3	30.1	45.0	14.8
Nonmetropolitan-----	4.2	5.8	2.5	3.4	4.5	2.3	16.5	26.4	6.3
<u>Pacific</u>									
Total-----	3.8	5.2	2.3	2.8	3.8	1.9	13.5	19.5	7.1
Metropolitan-----	3.9	5.5	2.4	2.9	3.8	1.9	13.9	20.6	7.0
Nonmetropolitan-----	3.2	4.4	2.0	2.7	3.7	1.6	11.1	13.9	7.7

Table 7. Age-adjusted homicide rates, by color, nativity of the white population, and sex; United States and geographic division, 1959-61 (3-year average)

Geographic division and sex	Total	White			Non-white
		Total	Native	Foreign	
<u>United States</u>					
Rate per 100,000 population					
Total-----	5.2	2.7	2.6	2.6	25.2
Male-----	7.8	3.8	3.7	4.0	41.4
Female-----	2.6	1.5	1.5	1.4	10.7
<u>New England</u>					
Total-----	1.5	1.2	1.2	0.8	10.0
Male-----	1.7	1.4	1.4	0.4	11.7
Female-----	1.2	1.0	0.9	1.0	8.3
<u>Middle Atlantic</u>					
Total-----	3.2	1.7	1.4	2.1	18.9
Male-----	4.8	2.4	1.8	2.8	31.4
Female-----	1.7	1.1	0.9	1.4	8.1
<u>East North Central</u>					
Total-----	3.9	2.0	1.9	3.0	25.1
Male-----	5.9	2.8	2.6	4.8	40.7
Female-----	2.1	1.3	1.2	1.3	10.7
<u>West North Central</u>					
Total-----	2.9	1.8	1.8	2.1	29.1
Male-----	4.2	2.4	2.4	3.1	48.6
Female-----	1.6	1.2	1.2	1.0	11.4
<u>South Atlantic</u>					
Total-----	9.2	3.8	3.7	2.2	29.3
Male-----	14.1	5.6	5.5	2.2	47.3
Female-----	4.5	2.1	2.1	2.0	13.0
<u>East South Central</u>					
Total-----	9.6	4.7	4.6	2.8	29.4
Male-----	15.8	7.7	7.7	5.0	51.2
Female-----	3.7	1.8	1.7	0.9	11.2
<u>West South Central</u>					
Total-----	8.3	4.4	4.2	7.5	29.8
Male-----	13.4	6.9	6.6	13.3	52.1
Female-----	3.4	2.0	2.0	2.7	10.6
<u>Mountain</u>					
Total-----	4.9	3.8	3.7	4.2	27.8
Male-----	7.0	5.2	5.0	5.7	42.9
Female-----	2.9	2.4	2.4	2.7	12.0
<u>Pacific</u>					
Total-----	4.1	3.0	2.9	2.9	14.7
Male-----	5.7	4.1	3.9	4.7	21.5
Female-----	2.5	1.9	1.9	1.3	7.5

OUTLINE OF REPORT SERIES FOR VITAL AND HEALTH STATISTICS

Public Health Service Publication No. 1000

- Series 1. Programs and collection procedures.*—Reports which describe the general programs of the National Center for Health Statistics and its offices and divisions, data collection methods used, definitions, and other material necessary for understanding the data.
- Series 2. Data evaluation and methods research.*—Studies of new statistical methodology including: experimental tests of new survey methods, studies of vital statistics collection methods, new analytical techniques, objective evaluations of reliability of collected data, contributions to statistical theory.
- Series 3. Analytical studies.*—Reports presenting analytical or interpretive studies based on vital and health statistics, carrying the analysis further than the expository types of reports in the other series.
- Series 4. Documents and committee reports.*—Final reports of major committees concerned with vital and health statistics, and documents such as recommended model vital registration laws and revised birth and death certificates.
- Series 10. Data from the Health Interview Survey.*—Statistics on illness, accidental injuries, disability, use of hospital, medical, dental, and other services, and other health-related topics, based on data collected in a continuing national household interview survey.
- Series 11. Data from the Health Examination Survey.*—Data from direct examination, testing, and measurement of national samples of the population provide the basis for two types of reports: (1) estimates of the medically defined prevalence of specific diseases in the United States and the distributions of the population with respect to physical, physiological, and psychological characteristics; and (2) analysis of relationships among the various measurements without reference to an explicit finite universe of persons.
- Series 12. Data from the Institutional Population Surveys.*—Statistics relating to the health characteristics of persons in institutions, and on medical, nursing, and personal care received, based on national samples of establishments providing these services and samples of the residents or patients.
- Series 13. Data from the Hospital Discharge Survey.*—Statistics relating to discharged patients in short-stay hospitals, based on a sample of patient records in a national sample of hospitals.
- Series 20. Data on mortality.*—Various statistics on mortality other than as included in annual or monthly reports—special analyses by cause of death, age, and other demographic variables, also geographic and time series analyses.
- Series 21. Data on natality, marriage, and divorce.*—Various statistics on natality, marriage, and divorce other than as included in annual or monthly reports—special analyses by demographic variables, also geographic and time series analyses, studies of fertility.
- Series 22. Data from the National Natality and Mortality Surveys.*—Statistics on characteristics of births and deaths not available from the vital records, based on sample surveys stemming from these records, including such topics as mortality by socioeconomic class, medical experience in the last year of life, characteristics of pregnancy, etc.

For a list of titles of reports published in these series, write to: Office of Information
National Center for Health Statistics
U.S. Public Health Service
Washington, D.C. 20201