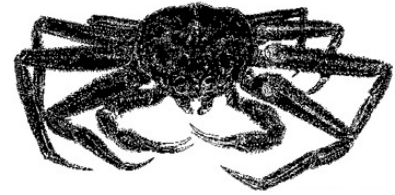


**ALASKA DEPARTMENT OF FISH AND GAME  
DIVISION OF COMMERCIAL FISHERIES  
NEWS RELEASE**



*McKie Campbell, Commissioner  
Denby S. Lloyd, Director*



---

**Contact:**

Forrest R. Bowers, BSAI Area Management Biologist  
Barbi Failor-Rounds, BSAI Assistant Area Shellfish Biologist  
Phone: (907) 581-1239  
Fax: (907) 581-1572

Dutch Harbor Area Office  
P.O. Box 920587  
Dutch Harbor, Alaska 99692  
Date Issued: Sept. 29, 2006  
Time: NOON

**BERING SEA TANNER CRAB FISHERY OPENS OCTOBER 15,  
TOTAL ALLOWABLE CATCH ANNOUNCED**

The Alaska Department of Fish and Game (ADF&G) and National Marine Fisheries Service (NMFS) have completed analysis of NMFS trawl survey data for the Bering Sea Tanner crab stock. The Bering Sea Tanner crab stock is above the minimum mature female biomass threshold of 21.0 million pounds.

The Bering Sea District Tanner crab stock is managed east and west of 166° W longitude, with a separate total allowable catch (TAC) for each area. There is no minimum total allowable catch (TAC) for Bering Sea District Tanner crab. The department calculated the TAC east of 166° W long., using a 10% harvest rate applied to the molting mature male abundance. West of 166° W long., the TAC was calculated using a 25% harvest rate applied to the exploitable legal male abundance estimate. The 2006/07 Bering Sea District Tanner crab TACs are summarized as follows:

IFQ - East	1,687,500 pounds
CDQ - East	187,500 pounds
Total - East	1,875,000 pounds

IFQ - West	984,600 pounds
CDQ - West	109,400 pounds
Total - West	1,094,000 pounds

In the area west of 166° W long., ADF&G statistical area 695700 which lies between 169° W long. and 170° W long. and 57° N lat. and 57° 30' N lat. will be closed to commercial fishing for Tanner crab to protect the Pribilof blue king crab stock. The majority of blue king crabs captured during the 2006 survey were found in this area. Approximately 326,000 exploitable legal male Tanner crabs were estimated to be in this statistical area, however those estimates were not used in setting the 2006/07 TAC.

The 2006/07 Bering Sea Tanner crab fishery will open at 12:00 NOON on October 15, 2006 and will remain open through March 31, 2007. The pot limit for this fishery is 450 pots per vessel. Buoy tags are currently available for sale at the Dutch Harbor and Kodiak ADF&G offices. Vessel operators may harvest Tanner crab and snow crab concurrently west of 166° W long., as well as Tanner crab and Bristol Bay red king crab east of 166° W long. Between 163° W long. and 166° W long., Tanner crab may only be harvested in the directed Tanner crab fishery. Vessel operators may not concurrently register for Tanner crab fishing east and west of 166° W long. Each vessel operator is restricted to a single species allocation of crab pot gear (450 pots) and must designate at the time of registration the quantity of pot gear registered and the quantity of pot gear configured for each species.

Regulations require proof of a current valid United States Coast Guard (USCG) Commercial Fisheries Safety Decal before a vessel registration is issued. Participating vessels must also have an activated vessel monitoring system approved by National Marine Fisheries Service (NMFS).

The operator of a vessel participating in IFQ, or CDQ crab fisheries must notify the USCG at least 24-hours prior to departing port when carrying crab pot gear. USCG can be contacted at: 1-800-478-5555.

Preseason gear inspections will be available in Dutch Harbor beginning on October 9, 2006 and in Akutan, and King Cove beginning on October 10, 2006. Vessel registration will begin at 12:00 NOON on October 13, 2006. An individual holding a current Commercial Fisheries Entry Commission (CFEC) Bering Sea Tanner crab interim use permit card (T91Q or T09Q) must be aboard the vessel when it is registered. Vessels may fish concurrently for IFQ and CDQ crab, but a separate registration and CFEC permit card is required for each fishery. At the time of registration, all pots onboard the vessel or in wet storage must be in compliance with current Bering Sea commercial Tanner crab fishing regulations.

Vessels participating in IFQ and CDQ fisheries may form gear operation cooperatives. Each vessel must register those vessels authorized to operate the vessel's gear at the time of registration. When a vessel transports crab pot gear to the fishing grounds for another vessel, the vessel owning the crab pot gear must be active within seven days in the registration area where the crab pot gear is deployed.

Vessel operators shall notify the department within 72-hours of completing fishing operations in a registration area or when departing the registration area with gear in long-term storage. The Board of Fisheries established a 14-day period when unbaited gear may be stored outside of designated storage areas after fishing is completed. Pots must be removed from the water or placed in long-term storage if left unattended in a registration area for more than a 14-day period. Additionally, a vessel's registration will be invalidated after 14-days of inactivity in a registration area.

For questions regarding issuance of quota share and IFQ/IPQ, contact NOAA Fisheries RAM Division at 1-800-304-4846 (option #2). For questions regarding federal Crab Rationalization Program regulations, contact NOAA Fisheries Sustainable Fisheries Division at (907) 586-7228 or the NOAA Office of Law Enforcement in Kodiak at (907) 486-3298 or Dutch Harbor at (907) 581-2061. For further information on state management contact the Alaska Department of Fish & Game in Dutch Harbor at (907) 581-1239 or in Kodiak, at (907) 486-1840.

-end-