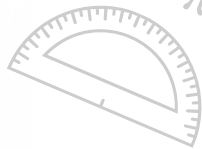


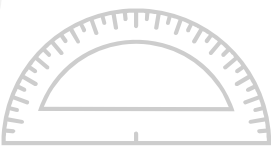
$$(a + b)^2 = a^2 + 2ab + b^2$$



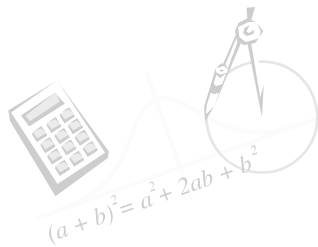
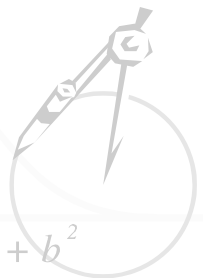
$$A = \pi r^2$$



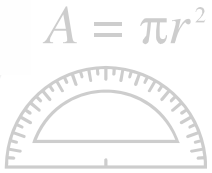
$$A = \pi r^2$$



$$(a + b)^2 = a^2 + 2ab + b^2$$



$$(a + b)^2 = a^2 + 2ab + b^2$$



$$A = \pi r^2$$



# Bureau of Research

# **Mission:**

Deliver customer focused,  
quality research and  
technology transfer solutions  
in order to:

**\*Increase public safety**

**\*Protect the environment**

**\*Reduce congestion**

**\*Enhance infrastructure durability**

**\*Improve transportation security**



## **Research Sponsors:**

- **Federal Highway Administration**
- **Federal Transit Administration**
- **NJ Dept. of Transportation**

## **Agency Partners Sampling:**

- **New Jersey Transit**
- **Motor Vehicle Commission**
- **Transportation Research Board**
- **AASHTO**

# EXAMPLES

- Smart Chip Emissions Technology
- Anti Graffiti Geopolymer Coatings
- Bridge Deck Cracking
- Warm Pavement Technology
- Water Quality Banking
- Graduated Driver's License
- Workzone Safety Intrusion Device
- Modeling & Simulation Optimization









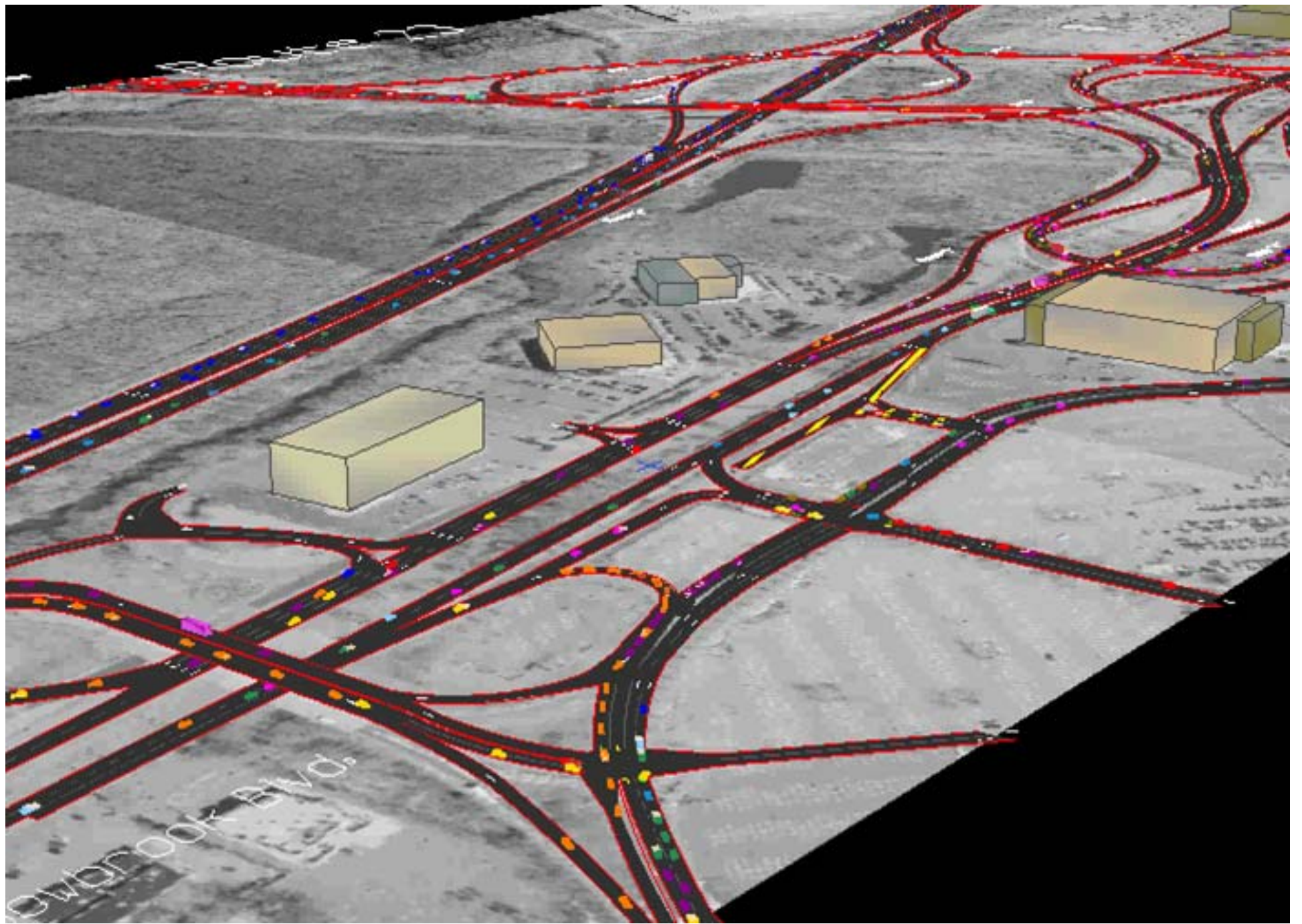






6/4/2001









# OUR RESEARCH PARTNERS

- City University of New York \**UITRC Consortium*
- Columbia University
- Cornell University
- New Jersey Institute of Technology
- New York University
- Polytechnic University
- Rensselaer Polytechnic Institute
- Rowan University
- Rutgers University \**Tier 1 UTC*
- The College of New Jersey





**RESEARCH**

FOR

**SOLUTIONS**

## Submit a Problem Statement:

[http://www.state.nj.us/transportation/refdata/  
research/requestresearch.shtm](http://www.state.nj.us/transportation/refdata/research/requestresearch.shtm)

We will *Research* your solution.

## **Contact Us:**

Bureau of Research  
1035 Parkway Avenue, P. O. Box 600  
Trenton, New Jersey 08625-0600

PHONE: 609-530-5966

Email: [research.bureau@dot.state.nj.us](mailto:research.bureau@dot.state.nj.us)

NJDOT's Research Library :

PHONE: 609-530-5289

