

NEW JERSEY DEPARTMENT OF CORRECTIONS

Devon Brown, Commissioner



OFFENDER CHARACTERISTICS REPORT

ON JANUARY 11, 2005

Policy Analysis and Planning
May 2005

INTRODUCTION

This report has been developed to provide information regarding offender characteristics in each correctional complex, major institution and satellite housing-unit under the jurisdiction of the New Jersey Department of Corrections on January 11, 2005. The selected characteristics compiled in this report are Base Offense at Admission, total Term at Admission, Ethnicity, Age, County of Commitment and Mandatory Minimum Term.

The Prison Complex includes, New Jersey State Prison, Central Reception and Assignment Facility, East Jersey State Prison, Bayside State prison, Riverfront State Prison, Mid-State, Southern State, Northern State Prison, South Woods, Edna Mahan Correctional Facility for Women and the Adult Diagnostic and Treatment Center (ADTC), a facility for adult male sex offenders.

NOTE: In our data tables we provide separate subtotals for ADTC and Edna Mahan Correctional Facility for Women due to the interest in these unique populations. The remainder of the Prison Complex is labeled "Prison Males."

The Youth Correctional Complex consists of Garden State Youth Correctional Facility, Albert C. Wagner Youth Correctional Facility, and Mountainview Youth Correctional Facility.

"Offenders in Other Facilities" include state-sentenced inmates housed in county jails, Halfway Houses, the Central Medical Unit (St. Francis Hospital) and those assigned to Electronic Monitoring/Home Confinement.

"Not Coded" are records for offenders in the correctional system for whom admission characteristics data had not been entered into the computerized information system as of January 11, 2005.

HIGHLIGHTS

- *Forty percent (40%) of all New Jersey Department of Corrections residents were committed for crimes against persons which include Homicide, Sexual Assault, Aggravated/Simple Assault, Assault, Robbery, Kidnapping, Other Sex Offenses and Other Person Offenses.*
- *Thirty-three percent (33%) of all Department of Corrections residents have been committed for narcotics law violations, including possession, sale and distribution. Eighty-one percent (81%) of all narcotics law violations are sale/distribution offenses.*
- *The median term for Department of Corrections residents is five years.*
- *Thirty-three percent (33%) of all New Jersey Department of Corrections residents were committed with maximum sentences of 10 years or more. Of the total, four percent (4%) are serving Life Sentences and 11 offenders are under Capital Sentence.*
- *Sixty-five percent (65%) of New Jersey Department of Corrections residents housed in the State System have sentences that include parole ineligibility terms.*
- *Forty-three percent (43%) of all residents in the New Jersey Department of Corrections are 30 years of age or younger. The median age for inmates in our adult facilities is 33.*
- *Sixty-three percent (63%) of New Jersey Department of Corrections residents are Black, while 20% are White and 17% are Hispanic.*
- *Of the 21 New Jersey counties, ten (Atlantic, Bergen, Camden, Essex, Hudson, Mercer, Middlesex, Monmouth, Passaic and Union) account for 82% of Total Department of Corrections Residents. Essex County is the highest contributor with 18%.*

NOTES

DUE TO SOFTWARE AND ROUNDING:

- **WORKSHEET ROW AND COLUMN TOTALS DO NOT ALWAYS EQUAL 100 PERCENT.**
- **PIE CHART PERCENTAGES DO NOT ALWAYS EQUAL 100%.**
- **PIE CHART PERCENTAGES MAY DIFFER SLIGHTLY FROM WORKSHEET PERCENTAGES.**
- **ACCOMPANYING NARRATIVES REFLECT PIE CHART PERCENTAGES.**

TOTAL RESIDENTS IN NEW JERSEY STATE CORRECTIONAL INSTITUTIONS AND SATELLITES ON JANUARY 11, 2005

TOTAL RESIDENTS		26,239
PRISON COMPLEX	18,713	YOUTH COMPLEX
ADTC	674	GARDEN STATE TOTAL
Bayside – Main	1,217	Mountainview - Main
Bayside – Farm	679	Mountainview – Stokes
Bayside – Ancora	371	MOUNTAINVIEW TOTAL
BAYSIDE TOTAL	2,267	
		Wagner – Main
CRAF – Jones Farm	235	Wagner – Ad Seg
CRAF – Reception	867	Wagner – Adult Boot Camp
CRAF TOTAL	1,102	WAGNER TOTAL
East Jersey – Main	1,364	OTHER FACILITIES
East Jersey – Camp	123	Central Medical
East Jersey – Marlboro	1	Halfway Houses
East Jersey – Ad Seg	442	County Jail
EAST JERSEY TOTAL	1,930	Electronic Monitoring (EM)
EDNA MAHAN CORR FACILITY	1,138	
MID-STATE TOTAL	645	
NJ State Prison – Ad Seg Female	32	
NJ State Prison – Main	1,902	
NJ STATE PRISON TOTAL	1,934	
Northern State – Main	2,113	
Northern State – Ad Seg Male	526	
NORTHERN STATE TOTAL	2,639	
RIVERFRONT TOTAL	1,024	
SOUTHERN STATE TOTAL	1,936	
SOUTH WOODS TOTAL	3,424	

TABLE OF CONTENTS

REPORT NAME	PAGE
<i>OFFENDERS IN NEW JERSEY CORRECTIONAL INSTITUTIONS BY BASE OFFENSE</i>	7
<i>Prison Complex Offenders</i>	8-10
<i>Youth Complex Offenders</i>	11
<i>Adult Offenders in Other Facilities</i>	12
<i>OFFENDERS IN NEW JERSEY CORRECTIONAL INSTITUTIONS BY TOTAL TERM AT ADMISSION</i>	13
<i>Prison Complex Offenders</i>	14-16
<i>Youth Complex Offenders</i>	17
<i>Adult Offenders in Other Facilities</i>	18
<i>OFFENDERS IN NEW JERSEY CORRECTIONAL INSTITUTIONS BY MANDATORY MINIMUM TERM</i>	19
<i>Prison Complex Offenders</i>	20-22
<i>Youth Complex Offenders</i>	23
<i>Adult Offenders in Other Facilities</i>	24
<i>OFFENDERS IN NEW JERSEY CORRECTIONAL INSTITUTIONS BY AGE</i>	25
<i>Prison Complex Offenders</i>	26-28
<i>Youth Complex Offenders</i>	29
<i>Adult Offenders in Other Facilities</i>	30
<i>OFFENDERS IN NEW JERSEY CORRECTIONAL INSTITUTIONS BY ETHNIC IDENTIFICATION</i>	31
<i>Prison Complex Offenders</i>	32-34
<i>Youth Complex Offenders</i>	35
<i>Adult Offenders in Other Facilities</i>	36
<i>OFFENDERS IN NEW JERSEY CORRECTIONAL INSTITUTIONS BY COUNTY OF COMMITMENT</i>	37
<i>Prison Complex Offenders</i>	38-40
<i>Youth Complex Offenders</i>	341
<i>Adult Offenders in Other Facilities</i>	42

**OFFENDERS IN NEW JERSEY CORRECTIONAL INSTITUTIONS
ON JANUARY 11, 2005, BY BASE OFFENSE**

In these tabulations, the base offense is that which is the most serious offense at the time of admission. These figures reflect base or controlling offenses at admission only, and do not include any offenses in addition to the base offense in the case of multiple sentences at admission. Additional sentences imposed following initial admission to the state correctional system are not included in these data.

- Violent offenses include homicide, sexual assault, aggravated and simple assault, robbery, kidnapping, other sex offenses and other person offenses (i.e. terroristic threats, coercion, larceny from a person, death by auto and negligent manslaughter).
- Property offenses include burglary, arson, theft, forgery, embezzlement, and receiving / possessing stolen property.
- Public policy offenses include racketeering, gambling, corruption, perjury, escape, bail jumping, juvenile and family related offenses, and conspiracy.
- Weapons offenses include weapon possession and operation.
- Drug violations include distribution, manufacture, possession, and use of drugs. Virtually all drug offenses are for sale and distribution rather than for mere possession.

OFFENDERS IN CORRECTIONAL INSTITUTIONS ON JANUARY 11, 2005, BY BASE OFFENSE

Base Offense	Total		Prison Males		Youth Complex		ADTC		Edna Mahan		Other Facilities	
	#	%	#	%	#	%	#	%	#	%	#	%
TOTAL OFFENDERS	26,239	100%	16,901	100%	4,324	100%	674	100%	1,138	100%	3,202	100%
Violent Offenses	10,537	40%	7,658	45%	1,444	33%	598	89%	408	36%	429	13%
Property Offenses	3,068	12%	2,061	12%	400	9%	2	0%	175	15%	430	13%
Miscellaneous	1,603	6%	1,023	6%	280	6%	56	8%	60	5%	184	6%
Weapons	1,084	4%	631	4%	281	6%	1	0%	13	1%	158	5%
Drugs	8,729	33%	4,880	29%	1,767	41%	4	1%	385	34%	1,693	53%
Not Coded	1,218	5%	648	4%	152	4%	13	2%	97	9%	308	10%

- Inmates with violent offenses comprise 45% of the prison complex, 33% of the youth complex, 89% of ADTC, 36% of Edna Mahan, and 13% of other adult facilities.

Prison Complex Offenders on January 11, 2005, By Base Offense

Institution	Total	Violent Offenses	Homicide	Sexual Assault	Assault	Robbery	Kidnap	Other Sex	Other Person	Property	Public Policy	Weapons	Drugs	Not Coded
Bayside Main	1,217 100%	379 31%	94 8%	1 0%	110 9%	157 13%	5 0%	0 0%	12 1%	186 15%	79 6%	66 5%	465 38%	42 3%
Bayside Farm	679 100%	218 32%	53 8%	0 0%	53 8%	102 15%	4 1%	0 0%	6 1%	140 21%	44 6%	31 5%	218 32%	28 4%
Bayside Ancora	371 100%	17 5%	0 0%	0 0%	2 1%	10 3%	0 0%	0 0%	5 1%	91 25%	16 4%	15 4%	215 58%	17 5%
Bayside Total	2,267 100%	614 27%	147 6%	1 0%	165 7%	269 12%	9 0%	0 0%	23 1%	417 18%	139 6%	112 5%	898 40%	87 4%
CRAF Jones Farm	235 100%	1 0%	0 0%	0 0%	0 0%	1 0%	0 0%	0 0%	0 0%	68 29%	12 5%	0 0%	141 60%	13 6%
CRAF Reception	867 100%	205 24%	31 4%	20 2%	44 5%	84 10%	0 0%	12 1%	14 2%	123 14%	63 7%	35 4%	329 38%	112 13%
CRAF Total	1,102 100%	206 19%	31 3%	20 2%	44 4%	85 8%	0 0%	12 1%	14 1%	191 17%	75 7%	35 3%	470 43%	125 11%
East Jersey Main	1,364 100%	1,008 74%	460 34%	96 7%	67 5%	347 25%	34 2%	2 0%	2 0%	60 4%	49 4%	40 3%	166 12%	41 3%
East Jersey Camp	123 100%	31 25%	0 0%	0 0%	11 9%	19 15%	0 0%	0 0%	1 1%	15 12%	8 7%	5 4%	58 47%	6 5%
East Jersey Marlboro	1 100%	0 0%	0 0%	0 0%	0 0%	0 0%	0 0%	0 0%	0 0%	0 0%	0 0%	0 0%	1 100%	0 0%
East Jersey Ad Seg	442 100%	226 51%	42 10%	28 6%	31 7%	114 26%	4 1%	0 0%	7 2%	49 11%	25 6%	22 5%	105 24%	15 3%
East Jersey Total	1,930 100%	1,265 66%	502 26%	124 6%	109 6%	480 25%	38 2%	2 0%	10 1%	124 6%	82 4%	67 3%	330 17%	62 3%

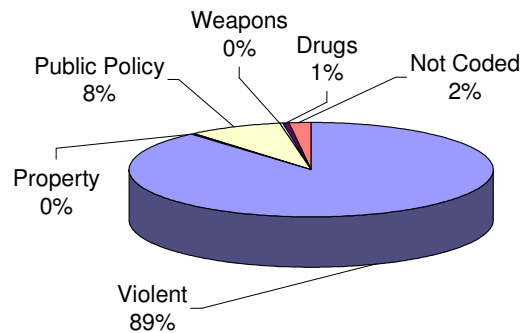
Prison Complex Offenders on January 11, 2005, By Base Offense

Institution	Total	Violent Offenses	Homicide	Sexual Assault	Assault	Robbery	Kidnap	Other Sex	Other Person	Property	Public Policy	Weapons	Drugs	Not Coded
Midstate	645 100%	216 33%	10 2%	109 17%	37 6%	34 5%	2 0%	18 3%	6 1%	85 13%	115 18%	19 3%	182 28%	28 4%
NJ State Prison Ad Seg Female	32 100%	12 38%	2 6%	2 6%	4 13%	4 13%	0 0%	0 0%	0 0%	4 13%	5 16%	0 0%	10 31%	1 3%
NJ State Prison Main	1,902 100%	1,560 82%	1,042 55%	114 6%	68 4%	280 15%	48 3%	1 0%	7 0%	64 3%	38 2%	21 1%	170 9%	49 3%
NJ State Prison Total	1,934 100%	1,572 81%	1,044 54%	116 6%	72 4%	284 15%	48 2%	1 0%	7 0%	68 4%	43 2%	21 1%	180 9%	50 3%
Northern Main	2,113 100%	1011 48%	230 11%	79 4%	203 10%	456 22%	22 1%	5 0%	16 1%	208 10%	119 6%	106 5%	613 29%	56 3%
Northern Ad Seg Male	526 100%	256 49%	86 16%	14 3%	48 9%	95 18%	8 2%	0 0%	5 1%	64 12%	28 5%	22 4%	143 27%	13 2%
Northern Total	2,639 100%	1,267 48%	316 12%	93 4%	251 10%	551 21%	30 1%	5 0%	21 1%	272 10%	147 6%	128 5%	756 29%	69 3%
Riverfront	1,024 100%	523 51%	101 10%	137 13%	72 7%	176 17%	12 1%	7 1%	18 2%	107 10%	73 7%	27 3%	264 26%	30 3%
Southern	1,936 100%	413 21%	64 3%	6 0%	123 6%	190 10%	4 0%	1 0%	25 1%	325 17%	125 6%	86 4%	932 48%	55 3%
South Woods	3,424 100%	1,582 46%	329 10%	310 9%	271 8%	589 17%	35 1%	12 0%	36 1%	472 14%	224 7%	136 4%	868 25%	142 4%
SUBTOTAL PRISON MALES	16,901 100%	7,658 45%	2,544 15%	916 5%	1,144 7%	2,658 16%	178 1%	58 0%	160 1%	2,061 12%	1,023 6%	631 4%	4,880 29%	648 4%

Prison Complex Offenders on January 11, 2005, By Base Offense

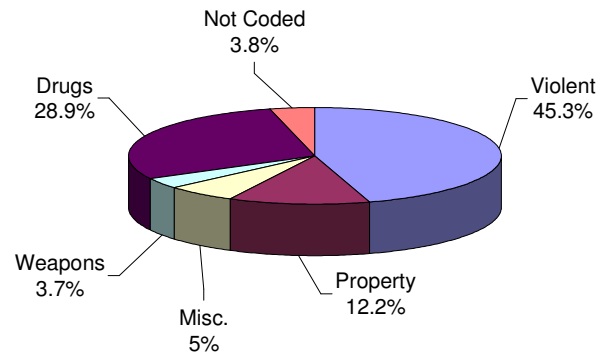
Institution	Total	Violent Offenses	Homicide	Sexual Assault	Assault	Robbery	Kidnap	Other Sex	Other Person	Property	Public Policy	Weapons	Drugs	Not Coded
ADTC	674	598	5	575	0	3	7	7	1	2	56	1	4	13
	100%	89%	1%	85%	0%	0%	1%	1%	0%	0%	8%	0%	1%	2%
SUBTOTAL	17,575	8,256	2,549	1,491	1,144	2,661	185	65	161	2,063	1,079	632	4,884	661
	100%	47%	15%	8%	7%	15%	1%	0%	1%	12%	6%	4%	28%	4%
Mahan - Female Prison	1,138	408	157	16	78	140	7	0	10	175	60	13	385	97
	100%	36%	14%	1%	7%	12%	1%	0%	1%	15%	5%	1%	34%	9%
Total Prison Complex	18,713	8,664	2,706	1,507	1,222	2,801	192	65	171	2,238	1,139	645	5,269	758
	100%	46%	14%	8%	7%	15%	1%	0%	1%	12%	6%	3%	28%	4%

ADTC



Virtually all offenders at ADTC were committed for violent offenses

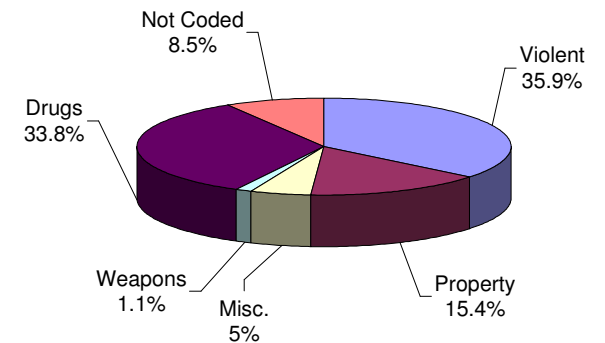
PRISON MALES



Forty-five percent (45%) of male offenders in the prison complex were convicted of a violent offense (ADTC excluded).

Twenty-nine percent (29%) of all male prison complex offenders were convicted of drug offenses.

FEMALE FACILITIES



Violent offenses were the most frequent commitment-offenses at Edna Mahan (36%).

Thirty-four percent (34%) of female residents were committed for drug offenses.

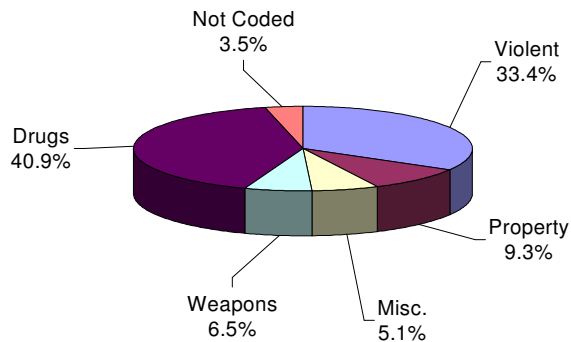
Youth Complex Offenders on January 11, 2005, By Base Offense

Institution	Total	Violent Offenses	Homicide	Sexual Assault	Assault	Robbery	Kidnap	Other Sex	Other Person	Property	Misc.	Weapons	Drugs	Not Coded
Garden State	1,709	695	118	90	125	337	8	3	14	148	115	96	592	63
	100%	41%	7%	5%	7%	20%	0%	0%	1%	9%	7%	6%	35%	4%
Mountainview Main	1,150	248	20	2	81	129	1	0	15	141	76	80	563	42
	100%	22%	2%	0%	7%	11%	0%	0%	1%	12%	7%	7%	49%	4%
Mountainview Stokes	109	17	1	0	11	4	0	0	1	11	8	11	57	5
	100%	16%	1%	0%	10%	4%	0%	0%	1%	10%	7%	10%	52%	5%
Mountainview Total	1,259	265	21	2	92	133	1	0	16	152	84	91	620	47
	100%	21%	2%	0%	7%	11%	0%	0%	1%	12%	7%	7%	49%	4%
Wagner Main	1,022	389	46	8	110	213	7	0	5	69	67	78	389	30
	100%	38%	5%	1%	11%	21%	1%	0%	0%	7%	7%	8%	38%	3%
Wagner Ad Seg	224	93	11	1	18	58	2	0	3	22	9	14	75	11
	100%	42%	5%	0%	8%	26%	1%	0%	1%	10%	4%	6%	33%	5%
Wagner Adult Boot Camp	110	2	0	0	1	0	0	0	1	9	5	2	91	1
	100%	2%	0%	0%	1%	0%	0%	0%	1%	8%	5%	2%	83%	1%
Wagner Total	1,356	484	57	9	129	271	9	0	9	100	81	94	555	42
	100%	36%	4%	1%	10%	20%	1%	0%	1%	7%	6%	7%	41%	3%
Total Youth	4,324	1,444	196	101	346	741	18	3	39	400	280	281	1,767	152
	100%	33%	5%	2%	8%	17%	0%	0%	1%	9%	6%	6%	41%	4%

Offenders In Other Facilities on January 11, 2005, By Base Offense

Institution	Total	Violent Offenses	Homicide	Sexual Assault	Assault	Robbery	Kidnap	Other Sex	Other Person	Property	Misc.	Weapons	Drugs	Not Coded
Central Medical	19	10	4	1	1	4	0	0	0	3	0	1	3	2
	100%	53%	21%	5%	5%	21%	0%	0%	0%	16%	0%	5%	16%	11%
County Jail	523	50	6	1	12	28	0	0	3	61	30	15	127	240
	100%	10%	1%	0%	2%	5%	0%	0%	1%	12%	6%	3%	24%	46%
EM/HC	32	0	0	0	0	0	0	0	0	4	2	0	25	1
	100%	0%	0%	0%	0%	0%	0%	0%	0%	13%	6%	0%	78%	3%
Halfway House	2,628	369	64	0	112	174	5	0	14	362	152	142	1,538	65
	100%	14%	2%	0%	4%	7%	0%	0%	1%	14%	6%	5%	59%	2%
Total Other Facilities	3,202	429	74	2	125	206	5	0	17	430	184	158	1,693	308
	100%	13%	2%	0%	4%	6%	0%	0%	1%	13%	6%	5%	53%	10%

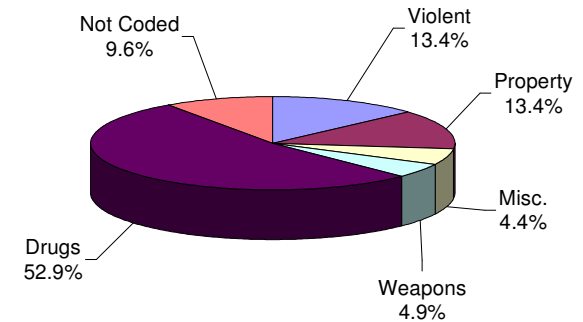
YOUTH COMPLEX



Forty-one percent (41%) of offenders housed in the youth complex were incarcerated for drug offenses.

Thirty-three percent (33%) of offenders housed in the youth complex were incarcerated for violent offenses and 9% for property offenses

OFFENDERS IN OTHER FACILITIES



Offenders housed in county jails and halfway houses are less serious offenders than those found in the prison complex facilities (i.e. 13% violent offenses vs. 45% violent offenses in prison complex).

Fifty-three percent (53%) of offenders housed in county jails and halfway houses were committed for drug offenses.

**OFFENDERS IN NEW JERSEY CORRECTIONAL INSTITUTIONS
ON JANUARY 11, 2005, BY TOTAL TERM AT ADMISSION**

Total term at admission is the total maximum term imposed for each offender at the time of commitment from the community or from parole. This includes the aggregate term for those admitted with multiple sentences. Additional sentences received following initial admission are not reflected or included in the data.

OFFENDERS IN NEW JERSEY CORRECTIONAL INSTITUTIONS ON JANUARY 11, 2005, BY TOTAL TERM AT ADMISSION

Total Term	Total		Prison Males		Youth Complex		ADTC		Edna Mahan		Other Facilities	
	#	%	#	%	#	%	#	%	#	%	#	%
TOTAL OFFENDERS	26,239	100%	16,901	100%	4,324	100%	674	100%	1,138	100%	3,202	100%
1-2 Years	443	2%	289	2%	73	2%	3	0%	13	1%	65	2%
3 Years	4,052	15%	2,032	12%	1,129	26%	19	3%	276	24%	596	19%
4 Years	3,681	14%	2,117	13%	782	18%	29	4%	205	18%	548	17%
5 Years	4,770	18%	2,848	17%	948	22%	46	7%	188	17%	740	23%
6 Years	1,184	5%	694	4%	232	5%	31	5%	46	4%	181	6%
7 Years	2,051	8%	1,257	7%	346	8%	79	12%	92	8%	277	9%
8-9 Years	1,508	6%	1,035	6%	218	5%	37	5%	42	4%	176	5%
10 Years	1,784	7%	1,223	7%	244	6%	108	16%	61	5%	148	5%
11-14 Years	944	4%	664	4%	125	3%	64	9%	33	3%	58	2%
15 Years	809	3%	620	4%	59	1%	57	8%	24	2%	49	2%
16-20 Years	1,270	5%	997	6%	86	2%	76	11%	34	3%	77	2%
20+ Years	2,247	9%	1,948	12%	70	2%	114	17%	59	5%	56	2%
Life	1,105	4%	1,068	6%	5	0%	3	0%	23	2%	6	0%
Capital	11	0%	11	0%	0	0%	0	0%	0	0%	0	0%
Not Coded	380	1%	98	1%	7	0%	8	1%	42	4%	225	7%

Among New Jersey Adult Correctional Offenders:

- The median term for adult offenders is 5 years.
- Forty-nine percent (49%) are serving terms of 1 -5 years.
- Nineteen percent (19%) are serving terms of 6-9 years.
- Thirty-three percent (33%) are serving terms of 10 years or more, which includes 1,105 offenders serving life and 11 capital sentences.

Prison Complex Offenders on January 11, 2005, By Total Term At Admission

Institution	Total	1-2 Years	3 Years	4 Years	5 Years	6 Years	7 Years	8-9 Years	10 Years	11-14 Years	15 Years	16-20 Years	20+ Years	Life	Capital	Not Coded
Bayside Main	1,217 100%	22 2%	167 14%	207 17%	277 23%	57 5%	103 8%	106 9%	86 7%	50 4%	29 2%	39 3%	53 4%	19 2%	0 0%	2 0%
Bayside Farm	679 100%	12 2%	106 16%	118 17%	138 20%	24 4%	51 8%	38 6%	58 9%	19 3%	18 3%	50 7%	47 7%	0 0%	0 0%	0 0%
Bayside Ancora	371 100%	12 3%	111 30%	98 26%	76 20%	15 4%	21 6%	20 5%	8 2%	3 1%	4 1%	1 0%	2 1%	0 0%	0 0%	0 0%
Bayside Total	2,267 100%	46 2%	384 17%	423 19%	491 22%	96 4%	175 8%	164 7%	152 7%	72 3%	51 2%	90 4%	102 4%	19 1%	0 0%	2 0%
CRAF Jones Farm	235 100%	13 6%	100 43%	60 26%	44 19%	5 2%	9 4%	2 1%	1 0%	0 0%	0 0%	0 0%	0 0%	0 0%	0 0%	1 0%
CRAF Reception	867 100%	33 4%	199 23%	139 16%	159 18%	35 4%	62 7%	49 6%	40 5%	26 3%	14 2%	27 3%	20 2%	4 0%	0 0%	60 7%
CRAF Total	1,102 100%	46 4%	299 27%	199 18%	203 18%	40 4%	71 6%	51 5%	41 4%	26 2%	14 1%	27 2%	20 2%	4 0%	0 0%	61 6%
East Jersey Main	1,364 100%	11 1%	33 2%	33 2%	87 6%	19 1%	52 4%	50 4%	108 8%	113 8%	113 8%	180 13%	401 29%	160 12%	0 0%	4 0%
East Jersey Camp	123 100%	4 3%	21 17%	21 17%	18 15%	5 4%	11 9%	7 6%	9 7%	5 4%	8 7%	7 6%	7 6%	0 0%	0 0%	0 0%
East Jersey Marlboro	1 100%	0 0%	0 0%	1 100%	0 0%	0 0%	0 0%	0 0%	0 0%	0 0%	0 0%	0 0%	0 0%	0 0%	0 0%	0 0%
East Jersey Ad Seg	442 100%	6 1%	59 13%	50 11%	75 17%	31 7%	32 7%	24 5%	44 10%	14 3%	18 4%	32 7%	39 9%	18 4%	0 0%	0 0%
East Jersey Total	1,930 100%	21 1%	113 6%	105 5%	180 9%	55 3%	95 5%	81 4%	161 8%	132 7%	139 7%	219 11%	447 23%	178 9%	0 0%	4 0%

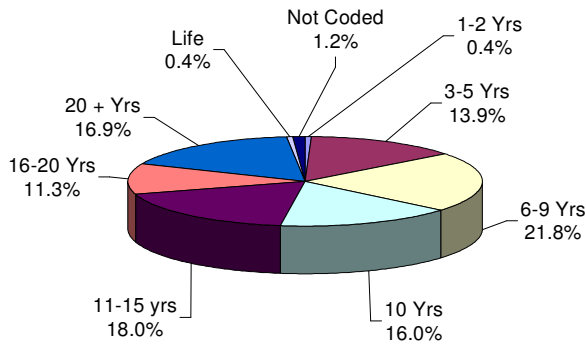
Prison Complex Offenders on January 11, 2005, By Total Term At Admission

Institution	Total	1-2 Years	3 Years	4 Years	5 Years	6 Years	7 Years	8-9 Years	10 Years	11-14 Years	15 Years	16-20 Years	20+ Years	Life	Capital	Not Coded
Midstate	645 100%	30 5%	130 20%	127 20%	159 25%	29 4%	61 9%	43 7%	27 4%	8 1%	9 1%	13 2%	8 1%	0 0%	0 0%	1 0%
NJ State Prison Ad Seg Female	32 100%	4 13%	11 34%	6 19%	3 9%	1 3%	3 9%	0 0%	1 3%	0 0%	0 0%	2 6%	0 0%	0 0%	1 3%	0 0%
NJ State Prison Main	1,902 100%	12 1%	57 3%	55 3%	103 5%	14 1%	36 2%	31 2%	58 3%	30 2%	24 1%	57 3%	664 35%	729 38%	11 1%	21 1%
NJ State Prison Total	1,934 100%	16 1%	68 4%	61 3%	106 5%	15 1%	39 2%	31 2%	59 3%	30 2%	24 1%	59 3%	664 34%	730 38%	11 1%	21 1%
Northern Main	2,113 100%	20 1%	213 10%	220 10%	363 17%	93 4%	196 9%	153 7%	213 10%	106 5%	105 5%	188 9%	209 10%	32 2%	0 0%	2 0%
Northern Ad Seg Male	526 100%	5 1%	57 11%	56 11%	81 15%	21 4%	43 8%	45 9%	46 9%	20 4%	17 3%	45 9%	67 13%	22 4%	0 0%	1 0%
Northern Total	2,639 100%	25 1%	270 10%	276 10%	444 17%	114 4%	239 9%	198 8%	259 10%	126 5%	122 5%	233 9%	276 10%	54 2%	0 0%	3 0%
Riverfront	1,024 100%	6 1%	80 8%	108 11%	177 17%	66 6%	92 9%	89 9%	110 11%	64 6%	45 4%	55 5%	108 11%	21 2%	0 0%	3 0%
Southern	1,936 100%	44 2%	313 16%	353 18%	470 24%	133 7%	208 11%	135 7%	122 6%	31 2%	35 2%	46 2%	37 2%	8 0%	0 0%	1 0%
South Woods	3,424 100%	55 2%	375 11%	465 14%	618 18%	146 4%	277 8%	243 7%	292 9%	175 5%	181 5%	255 7%	286 8%	54 2%	0 0%	2 0%
SUBTOTAL PRISON MALES	16,901 100%	289 2%	2,032 12%	2,117 13%	2,848 17%	694 4%	1,257 7%	1,035 6%	1,223 7%	664 4%	620 4%	997 6%	1,948 12%	1,067 6%	12 0%	98 1%

Prison Complex Offenders on January 11, 2005, By Total Term At Admission

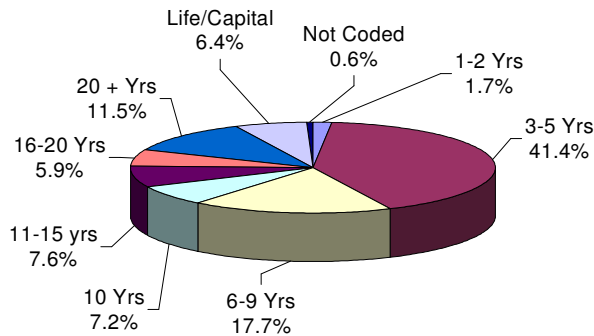
Institution	Total	1-2 Years	3 Years	4 Years	5 Years	6 Years	7 Years	8-9 Years	10 Years	11-14 Years	15 Years	16-20 Years	20+ Years	Life	Capital	Not Coded
ADTC	674	3	19	29	46	31	79	37	108	64	57	76	114	3	0	8
	100%	0%	3%	4%	7%	5%	12%	5%	16%	9%	8%	11%	17%	0%	0%	1%
SUBTOTAL	17,575	292	2,051	2,146	2,894	725	1,336	1,072	1,331	728	677	1,073	2,062	1,070	12	106
	100%	2%	12%	12%	16%	4%	8%	6%	8%	4%	4%	6%	12%	6%	0%	1%
Mahan - Female Prison	1,138	13	276	205	188	46	92	42	61	33	24	34	59	23	0	42
	100%	1%	24%	18%	17%	4%	8%	4%	5%	3%	2%	3%	5%	2%	0%	4%
Total Prison Complex	18,713	305	2,327	2,351	3,082	771	1,428	1,114	1,392	761	701	1,107	2,121	1,093	12	148
	100%	2%	12%	13%	16%	4%	8%	6%	7%	4%	4%	6%	11%	6%	0%	1%

ADTC



The median term at ADTC is 10 years.

PRISON MALES

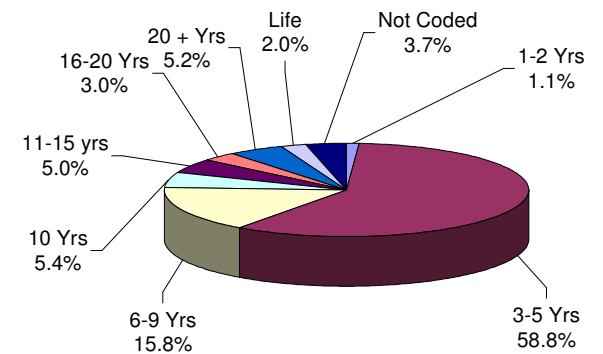


The median term for prison males is 7 years.

Twenty-four percent (24%) of all prison males are serving sentences of 16 years or more.

Seventy-seven percent (77%) of all offenders at New Jersey State Prison are serving sentences of 16 years or more, with 730 life sentences and 11 capital cases.

FEMALE FACILITIES



The median term at Edna Mahan is 5 years.

Sixty percent (60%) of the female offenders at Edna Mahan Correctional Facility for Women are serving sentences of 5 years or less.

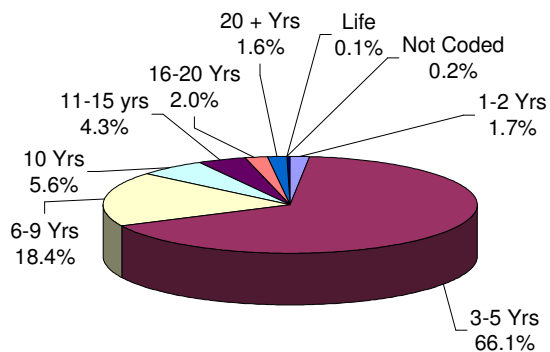
Youth Complex Offenders on January 11, 2005, By Total Term At Admission

Institution	Total	1-2 Years	3 Years	4 Years	5 Years	6 Years	7 Years	8-9 Years	10 Years	11-14 Years	15 Years	16-20 Years	20+ Years	Life	Capital	Not Coded
Garden State	1,709	28	346	305	359	109	132	95	109	64	40	58	58	5	0	1
	100%	2%	20%	18%	21%	6%	8%	6%	6%	4%	2%	3%	3%	0%	0%	0%
Mountainview Main	1,150	26	387	252	285	51	79	40	17	5	0	2	4	0	0	2
	100%	2%	34%	22%	25%	4%	7%	3%	1%	0%	0%	0%	0%	0%	0%	0%
Mountainview Stokes	109	0	44	19	30	3	8	0	4	0	1	0	0	0	0	0
	100%	0%	40%	17%	28%	3%	7%	0%	4%	0%	1%	0%	0%	0%	0%	0%
Mountainview Total	1,259	26	431	271	315	54	87	40	21	5	1	2	4	0	0	2
	100%	2%	34%	22%	25%	4%	7%	3%	2%	0%	0%	2%	4%	0%	0%	0%
Wagner Main	1,022	14	223	142	216	61	107	73	96	49	15	18	6	0	0	2
	100%	1%	22%	14%	21%	6%	10%	7%	9%	5%	1%	2%	1%	0%	0%	0%
Wagner Ad Seg	224	3	57	46	43	7	19	10	18	7	3	8	2	0	0	1
	100%	1%	25%	21%	19%	3%	8%	4%	8%	3%	1%	4%	1%	0%	0%	0%
Wagner Adult Boot Camp	110	2	72	18	15	1	1	0	0	0	0	0	0	0	0	1
	100%	2%	65%	16%	14%	1%	1%	0%	0%	0%	0%	0%	0%	0%	0%	1%
Wagner Total	1,356	19	352	206	274	69	127	83	114	56	18	26	8	0	0	4
	100%	1%	26%	15%	20%	5%	9%	6%	8%	4%	1%	2%	1%	0%	0%	0%
Total Youth	4,324	73	1,129	782	948	232	346	218	244	125	59	86	70	5	0	7
	100%	2%	26%	18%	22%	5%	8%	5%	6%	3%	1%	2%	2%	0%	0%	0%

Offenders In Other Facilities on January 11, 2005, By Total Term At Admission

Institution	Total	1-2 Years	3 Years	4 Years	5 Years	6 Years	7 Years	8-9 Years	10 Years	11-14 Years	15 Years	16-20 Years	20+ Years	Life	Capital	Not Coded
Central Medical	19 100%	3 16%	3 16%	0 0%	1 5%	1 5%	1 5%	0 0%	2 11%	1 5%	0 0%	2 11%	3 16%	2 11%	0 0%	0 0%
County Jail	523 100%	20 4%	99 19%	52 10%	54 10%	13 2%	18 3%	11 2%	7 1%	7 1%	8 2%	9 2%	2 0%	0 0%	0 0%	223 43%
EM/HC	32 100%	0 0%	11 34%	5 16%	11 34%	0 0%	3 9%	2 6%	0 0%	0 0%	0 0%	0 0%	0 0%	0 0%	0 0%	0 0%
Halfway House	2,628 100%	42 2%	483 18%	491 19%	674 26%	167 6%	255 10%	163 6%	139 5%	50 2%	41 2%	66 3%	51 2%	4 0%	0 0%	2 0%
Total Other Facilities	3,202 100%	65 2%	596 19%	548 17%	740 23%	181 6%	277 9%	176 5%	148 5%	58 2%	49 2%	77 2%	56 2%	6 0%	0 0%	225 7%

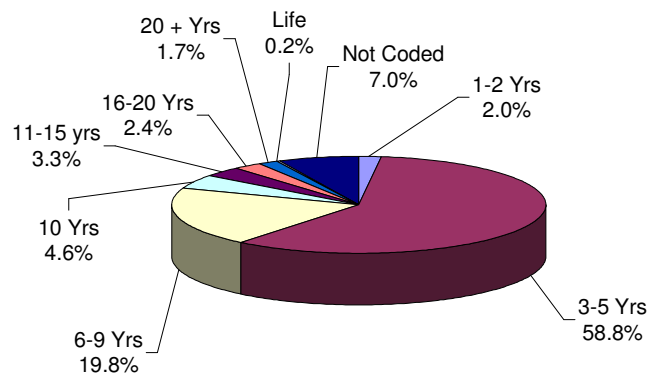
YOUTH COMPLEX



The median youth complex term is 5 years.

Five (5) youth complex offenders are serving life sentences.

OFFENDERS IN OTHER FACILITIES



The median term for offenders housed in 'other facilities' is 5 years.

Sixty-one percent (61%) of offenders housed in 'other facilities' are serving terms of 5 years or less.

**OFFENDERS IN NEW JERSEY CORRECTIONAL INSTITUTIONS
ON JANUARY 11, 2005, BY MANDATORY MINIMUM TERM**

In New Jersey, since 1979, the courts have utilized mandatory minimum sentences. This means that an offender must serve the entire minimum sentence before being eligible for parole consideration. Mandatory minimum terms are not reduced by earned credits (commutation, minimum security or work).

OFFENDERS IN CORRECTIONAL INSTITUTIONS ON JANUARY 11, 2005, BY MANDATORY MINIMUM TERM

Mandatory Minimum Term	Total		Prison Males		Youth Complex		ADTC		Edna Mahan		Other Facilities	
	#	%	#	%	#	%	#	%	#	%	#	%
TOTAL OFFENDERS	17,012	100%	11,327	100%	2,835	100%	348	100%	587	100%	1,915	100%
<18 Months	1,405	8%	568	5%	553	20%	0	0%	44	7%	240	13%
18 Months	883	5%	450	4%	235	8%	0	0%	25	4%	173	9%
2 Years	2,564	15%	1,507	13%	454	16%	2	1%	92	16%	509	27%
3 Years	2,779	16%	1,742	15%	410	14%	15	4%	88	15%	524	27%
4 Years	1,437	8%	918	8%	297	10%	20	6%	60	10%	142	7%
5 Years	1,811	11%	1,185	10%	322	11%	88	25%	84	14%	132	7%
6-9 Years	1,965	12%	1,365	12%	318	11%	83	24%	68	12%	131	7%
10 Years	669	4%	516	5%	65	2%	43	12%	21	4%	24	1%
11-14 Years	799	5%	642	6%	84	3%	30	9%	25	4%	18	1%
15 Years	438	3%	352	3%	24	1%	35	10%	15	3%	12	1%
16-19 Years	370	2%	309	3%	33	1%	11	3%	15	3%	2	0%
20-24 Years	310	2%	275	2%	15	1%	8	2%	10	2%	2	0%
25-29 Years	290	2%	271	2%	6	0%	7	2%	4	1%	2	0%
30 Years	760	4%	713	6%	15	1%	3	1%	27	5%	2	0%
30+ Years	532	3%	514	5%	4	0%	3	1%	9	2%	2	0%

- Sixty-five percent (65%) of all adult offenders have mandatory minimum terms (17,012 out of 26, 239).
- The median mandatory minimum term is 4 years.
- Sixteen percent (16%) of those with mandatory minimum terms have mandatory minimum terms of 15 years or more.

Prison Complex Offenders on January 11, 2005, By Mandatory Minimum Term

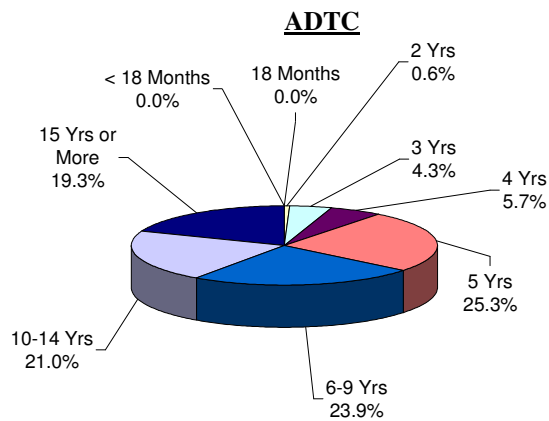
Institution	Total	< 18 Months	18 Months	2 Years	3 Years	4 Years	5 Years	6-9 Years	10 Years	11-14 Years	15 Years	16-19 Years	20-24 Years	25-29 Years	30 Years	30+ Years
Bayside Main	777 100%	46 6%	35 5%	144 19%	171 22%	109 14%	101 13%	93 12%	26 3%	24 3%	13 2%	3 0%	2 0%	6 1%	3 0%	1 0%
Bayside Farm	395 100%	18 5%	23 6%	70 18%	77 19%	37 9%	45 11%	63 16%	29 7%	16 4%	7 2%	4 1%	2 1%	4 1%	0 0%	0 0%
Bayside Ancora	181 100%	36 20%	23 13%	57 31%	37 20%	11 6%	9 5%	7 4%	1 1%	0 0%	0 0%	0 0%	0 0%	0 0%	0 0%	0 0%
Bayside Total	1,353 100%	100 7%	81 6%	271 20%	285 21%	157 12%	155 11%	163 12%	56 4%	40 3%	20 1%	7 1%	4 0%	10 1%	3 0%	1 0%
CRAF Jones Farm	90 100%	32 36%	15 17%	31 34%	9 10%	0 0%	0 0%	3 3%	0 0%	0 0%	0 0%	0 0%	0 0%	0 0%	0 0%	0 0%
CRAF Reception	440 100%	54 12%	31 7%	89 20%	89 20%	46 10%	61 14%	34 8%	13 3%	7 2%	4 1%	8 2%	1 0%	0 0%	2 0%	1 0%
CRAF Total	530 100%	86 16%	46 9%	120 23%	98 18%	46 9%	61 12%	37 7%	13 2%	7 1%	4 1%	8 2%	1 0%	0 0%	2 0%	1 0%
East Jersey Main	1,154 100%	15 1%	10 1%	33 3%	53 5%	41 4%	105 9%	142 12%	97 8%	175 15%	97 8%	86 7%	61 5%	54 5%	143 12%	42 4%
East Jersey Camp	73 100%	6 8%	4 5%	7 10%	19 26%	2 3%	14 19%	11 15%	6 8%	2 3%	2 3%	0 0%	0 0%	0 0%	0 0%	0 0%
East Jersey Marlboro	1 100%	0 0%	0 0%	1 100%	0 0%	0 0%	0 0%	0 0%	0 0%	0 0%	0 0%	0 0%	0 0%	0 0%	0 0%	0 0%
East Jersey Ad Seg	298 100%	23 8%	16 5%	34 11%	47 16%	20 7%	36 12%	41 14%	16 5%	20 7%	6 2%	10 3%	6 2%	6 2%	12 4%	5 2%
East Jersey Total	1,526 100%	44 3%	30 2%	75 5%	119 8%	63 4%	155 10%	194 13%	119 8%	197 13%	105 7%	96 6%	67 4%	60 4%	155 10%	47 3%

Prison Complex Offenders on January 11, 2005, By Mandatory Minimum Term

Institution	Total	< 18 Months	18 Months	2 Years	3 Years	4 Years	5 Years	6-9 Years	10 Years	11-14 Years	15 Years	16-19 Years	20-24 Years	25-29 Years	30 Years	30+ Years
Midstate	269 100%	28 10%	22 8%	62 23%	82 30%	33 12%	10 4%	21 8%	5 2%	3 1%	2 1%	0 0%	1 0%	0 0%	0 0%	0 0%
NJ State Prison Ad Seg Female	12 100%	3 0%	1 0%	2 0%	1 0%	0 0%	3 0%	0 0%	0 0%	0 0%	1 0%	1 0%	0 0%	0 0%	0 0%	0 0%
NJ State Prison Main	1,598 100%	22 1%	11 1%	52 3%	65 4%	23 1%	41 3%	61 4%	34 2%	35 2%	38 2%	60 4%	115 7%	154 10%	467 29%	420 26%
NJ State Prison Total	1,610 100%	25 2%	12 1%	54 3%	66 4%	23 1%	44 3%	61 4%	34 2%	35 2%	39 2%	61 4%	115 7%	154 10%	467 29%	420 26%
Northern Main	1,522 100%	72 5%	50 3%	171 11%	245 16%	143 9%	201 13%	254 17%	70 5%	136 9%	49 3%	50 3%	25 2%	10 1%	33 2%	13 1%
Northern Ad Seg Male	375 100%	26 7%	7 2%	39 10%	65 17%	35 9%	51 14%	51 14%	22 6%	21 6%	21 6%	8 2%	8 2%	3 1%	11 3%	7 2%
Northern Total	1,897 100%	98 5%	57 3%	210 11%	310 16%	178 9%	252 13%	305 16%	92 5%	157 8%	70 4%	58 3%	33 2%	13 1%	44 2%	20 1%
Riverfront	730 100%	21 3%	25 3%	102 14%	116 16%	77 11%	109 15%	126 17%	48 7%	36 5%	22 3%	11 2%	13 2%	10 1%	9 1%	5 1%
Southern	1,203 100%	76 6%	85 7%	300 25%	347 29%	118 10%	130 11%	93 8%	29 2%	7 1%	9 1%	1 0%	3 0%	2 0%	2 0%	1 0%
South Woods	2,209 100%	90 4%	92 4%	313 14%	319 14%	223 10%	269 12%	365 17%	120 5%	160 7%	81 4%	67 3%	38 2%	22 1%	31 1%	19 1%
SUBTOTAL PRISON MALES	11,327 100%	568 5%	450 4%	1,507 13%	1,742 15%	918 8%	1,185 10%	1,365 12%	516 5%	642 6%	352 3%	309 3%	275 2%	271 2%	713 6%	514 5%

Prison Complex Offenders on January 11, 2005, By Mandatory Minimum Term

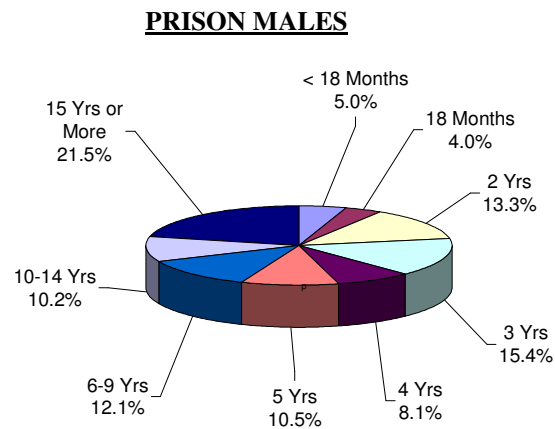
Institution	Total	< 18 Months	18 Months	2 Years	3 Years	4 Years	5 Years	6-9 Years	10 Years	11-14 Years	15 Years	16-19 Years	20-24 Years	25-29 Years	30 Years	30+ Years
ADTC	348 100%	0 0%	0 0%	2 1%	15 4%	20 6%	88 25%	83 24%	43 12%	30 9%	35 10%	11 3%	8 2%	7 2%	3 1%	3 1%
Subtotal	11,675 100%	568 5%	450 4%	1,509 13%	1,757 15%	938 8%	1,273 11%	1,448 12%	559 5%	672 6%	387 3%	320 3%	283 2%	278 2%	716 6%	517 4%
Mahan - Female Prison	587 100%	44 7%	25 4%	92 16%	88 15%	60 10%	84 14%	68 12%	21 4%	25 4%	15 3%	15 3%	10 2%	4 1%	27 5%	9 2%
Total Prison Complex	12,262 100%	612 5%	475 4%	1,601 13%	1,845 15%	998 8%	1,357 11%	1,516 12%	580 5%	697 6%	402 3%	335 3%	293 2%	282 2%	743 6%	526 4%



The median mandatory minimum term at ADTC is 8 years 5 months.

Fifty-two percent (52%) of the ADTC population have mandatory minimum sentences (348 of 674).

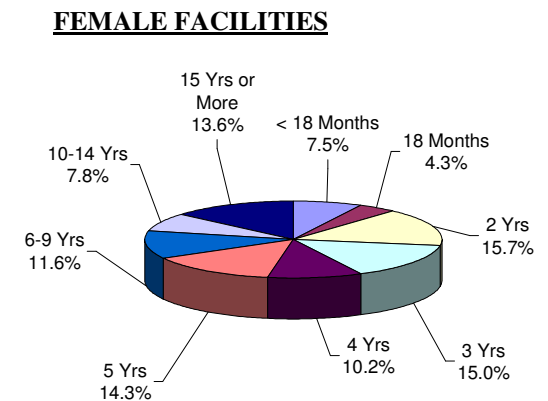
Forty percent (40%) have mandatory minimum terms of 10 years or longer.



Of the 16,901 prison complex males, 67% (11,327) have mandatory minimum terms.

The median mandatory minimum term for prison complex males is 5 years (ADTC excluded).

Eighty-three percent (83%) of New Jersey State Prison inmates have mandatory minimum terms and 78% percent of those have minimum terms of 15 years or more.



The median mandatory minimum term at Edna Mahan is 4 years.

At Edna Mahan, 52% of the females housed have minimum terms (587 of 1,138).

Sixty-seven percent (67%) of the females with mandatory minimum terms have terms of 5 years or less.

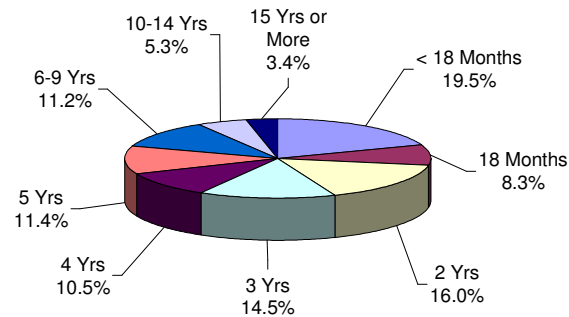
Youth Complex Offenders on January 11, 2005, By Mandatory Minimum Term

Institution	Total	< 18 Months	18 Months	2 Years	3 Years	4 Years	5 Years	6-9 Years	10 Years	11-14 Years	15 Years	16-19 Years	20-24 Years	25-29 Years	30 Years	30+ Years
Garden State	1,144	168	77	200	142	114	129	143	37	54	17	24	15	5	15	4
	100%	15%	7%	17%	12%	10%	11%	13%	3%	5%	1%	2%	1%	0%	1%	0%
Mountainview Main	676	175	66	129	141	88	48	25	0	1	2	1	0	0	0	0
	100%	26%	10%	19%	21%	13%	7%	4%	0%	0%	0%	0%	0%	0%	0%	0%
Mountainview Stokes	56	14	6	16	13	1	4	2	0	0	0	0	0	0	0	0
	100%	25%	11%	29%	23%	2%	7%	4%	0%	0%	0%	0%	0%	0%	0%	0%
Mountainview Total	732	189	72	145	154	89	52	27	0	1	2	1	0	0	0	0
	100%	26%	10%	20%	21%	12%	7%	4%	0%	0%	0%	2%	0%	0%	0%	0%
Wagner Main	727	106	54	92	97	76	122	125	24	22	4	5	0	0	0	0
	100%	15%	7%	13%	13%	10%	17%	17%	3%	3%	1%	1%	0%	0%	0%	0%
Wagner Ad Seg	156	34	15	16	17	18	19	21	4	7	1	3	0	1	0	0
	100%	22%	10%	10%	11%	12%	12%	13%	3%	4%	1%	2%	0%	1%	0%	0%
Wagner Adult Boot Camp	76	56	17	1	0	0	0	2	0	0	0	0	0	0	0	0
	100%	74%	22%	1%	0%	0%	0%	3%	0%	0%	0%	0%	0%	0%	0%	0%
Wagner Total	959	196	86	109	114	94	141	148	28	29	5	8	0	1	0	0
	100%	20%	9%	11%	12%	10%	15%	15%	3%	3%	1%	1%	0%	0%	0%	0%
Total Youth	2,835	553	235	454	410	297	322	318	65	84	24	33	15	6	15	4
	100%	20%	8%	16%	14%	10%	11%	11%	2%	3%	1%	1%	1%	0%	1%	0%

Offenders In Other Facilities on January 11, 2005, By Mandatory Minimum Term

Institution	Total	< 18 Months	18 Months	2 Years	3 Years	4 Years	5 Years	6-9 Years	10 Years	11-14 Years	15 Years	16-19 Years	20-24 Years	25-29 Years	30 Years	30+ Years
Central Medical	11 100%	0 0%	0 0%	0 0%	2 18%	0 0%	2 18%	1 9%	0 0%	1 9%	1 9%	0 0%	0 0%	1 9%	1 9%	2 18%
County Jail	119 100%	26 22%	7 6%	27 23%	24 20%	7 6%	16 13%	8 7%	2 2%	2 2%	0 0%	0 0%	0 0%	0 0%	0 0%	0 0%
EM/HC	25 100%	8 32%	5 20%	6 24%	3 12%	1 4%	0 0%	2 8%	0 0%	0 0%	0 0%	0 0%	0 0%	0 0%	0 0%	0 0%
Halfway House	1,760 100%	206 12%	161 9%	476 27%	495 28%	134 8%	114 6%	120 7%	22 1%	15 1%	11 1%	2 0%	2 0%	1 0%	1 0%	0 0%
Total Other Facilities	1,915 100%	240 13%	173 9%	509 27%	524 27%	142 7%	132 7%	131 7%	24 1%	18 1%	12 1%	2 0%	2 0%	2 0%	2 0%	2 0%

YOUTH COMPLEX

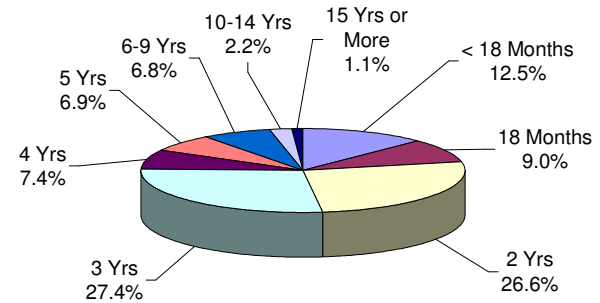


The median mandatory minimum term for youth complex offenders is 3 years.

Among youth complex offenders, 66% have mandatory minimum terms (2,835 of 4,324).

Of these, 79% have mandatory minimum terms of 5 years or less.

OFFENDERS IN OTHER FACILITIES



The median mandatory minimum term for inmates in 'other facilities' is 3 years.

Sixty percent (60%) of the offenders in 'other facilities' have mandatory minimum terms (1,915 of 3,202).

Of these, 90% have mandatory minimum terms of 5 years or less.

**OFFENDERS IN NEW JERSEY CORRECTIONAL INSTITUTIONS
ON JANUARY 11, 2005, BY AGE**

The age of the offender is the chronological age as of January 11, 2005.

OFFENDERS IN CORRECTIONAL INSTITUTIONS ON JANUARY 11, 2005, BY AGE

Age	Total		Prison Males		Youth Complex		ADTC		Edna Mahan		Other Facilities	
	#	%	#	%	#	%	#	%	#	%	#	%
TOTAL OFFENDERS	26,239	100%	16,901	100%	4,324	100%	674	100%	1,138	100%	3,202	100%
< 17 Years	4	0%	1	0%	1	0%	0	0%	0	0%	2	0%
17 Years	20	0%	2	0%	16	0%	0	0%	1	0%	1	0%
18-20 Years	938	4%	131	1%	702	16%	6	1%	21	2%	78	2%
21-22 Years	1,932	7%	395	2%	1,259	29%	11	2%	55	5%	212	7%
23-24 Years	2,199	8%	763	5%	1,097	25%	15	2%	59	5%	265	8%
25-27 Years	3,403	13%	1,754	10%	1,032	24%	23	3%	122	11%	472	15%
28-30 Years	2,804	11%	2,121	13%	175	4%	27	4%	98	9%	383	12%
31-33 Years	2,665	10%	2,107	12%	24	1%	50	7%	130	11%	354	11%
34-36 Years	2,635	10%	2,056	12%	7	0%	56	8%	125	11%	391	12%
37-39 Years	2,447	9%	1,940	11%	1	0%	67	10%	154	14%	285	9%
40-44 Years	3,293	13%	2,574	15%	8	0%	111	16%	184	16%	416	13%
45-49 Years	1,951	7%	1,537	9%	1	0%	86	13%	104	9%	223	7%
50-54 Years	989	4%	787	5%	1	0%	81	12%	53	5%	67	2%
55-59 Years	541	2%	421	2%	0	0%	63	9%	20	2%	37	1%
60-64 Years	223	1%	177	1%	0	0%	32	5%	6	1%	8	0%
65+ Years	193	1%	134	1%	0	0%	46	7%	6	1%	7	0%
Unspec	2	0%	1	0%	0	0%	0	0%	0	0%	1	0%

- The median age for adult residents is 33 years.
- Four percent (4%) of all adult offenders are 20 years of age or younger.
- Thirty-nine percent (39%) of all adult offenders are between the ages of 21-30.
- Twenty-nine percent (29%) of all adult offenders are 31 to 39 years of age.
- Twenty-eight percent (28%) of all adult offenders are 40 years of age and older.

Prison Complex Offenders on January 11, 2005, By Age

Institution	Total	< 17 Years	17 Years	18-20 Years	21-22 Years	23-24 Years	25-27 Years	28-30 Years	31-33 Years	34-36 Years	37-39 Years	40-44 Years	45-49 Years	50-54 Years	55-59 Years	60-64 Years	65+ Years	Unspec
Bayside	1,217	0	0	1	18	58	159	196	173	171	114	165	96	33	21	8	4	0
Main	100%	0%	0%	0%	1%	5%	13%	16%	14%	14%	9%	14%	8%	3%	2%	1%	0%	0%
Bayside	679	0	0	0	0	7	35	73	102	107	98	138	74	34	7	3	1	0
Farm	100%	0%	0%	0%	0%	1%	5%	11%	15%	16%	14%	20%	11%	5%	1%	0%	0%	0%
Bayside	371	0	0	0	0	4	27	48	63	58	50	79	26	8	6	2	0	0
Ancora	100%	0%	0%	0%	0%	1%	7%	13%	17%	16%	13%	21%	7%	2%	2%	1%	0%	0%
Bayside Total	2,267	0	0	1	18	69	221	317	338	336	262	382	196	75	34	13	5	0
	100%	0%	0%	0%	1%	3%	10%	14%	15%	15%	12%	17%	9%	3%	1%	1%	0%	0%
CRAF	235	0	0	0	0	0	12	49	29	34	31	40	18	18	3	0	1	0
Jones Farm	100%	0%	0%	0%	0%	0%	5%	21%	12%	14%	13%	17%	8%	8%	1%	0%	0%	0%
CRAF	867	1	1	45	46	60	108	116	110	91	99	87	66	22	10	1	4	0
Reception	100%	0%	0%	5%	5%	7%	12%	13%	13%	10%	11%	10%	8%	3%	1%	0%	0%	0%
CRAF Total	1,102	1	1	45	46	60	120	165	139	125	130	127	84	40	13	1	5	0
	100%	0%	0%	4%	4%	5%	11%	15%	13%	11%	12%	12%	8%	4%	1%	0%	0%	0%
East Jersey	1,364	0	0	1	17	39	102	141	170	162	164	235	144	91	51	33	14	0
Main	100%	0%	0%	0%	1%	3%	7%	10%	12%	12%	12%	17%	11%	7%	4%	2%	1%	0%
East Jersey	123	0	0	0	0	2	6	9	14	16	27	27	17	2	2	1	0	0
Camp	100%	0%	0%	0%	0%	2%	5%	7%	11%	13%	22%	22%	14%	2%	2%	1%	0%	0%
East Jersey	1	0	0	0	0	0	0	0	0	0	1	0	0	0	0	0	0	0
Marlboro	100%	0%	0%	0%	0%	0%	0%	0%	0%	0%	100%	0%	0%	0%	0%	0%	0%	0%
East Jersey	442	0	0	9	42	39	79	61	61	41	30	43	19	12	3	2	1	0
Ad Seg	100%	0%	0%	2%	10%	9%	18%	14%	14%	9%	7%	10%	4%	3%	1%	0%	0%	0%
East Jersey	1,930	0	0	10	59	80	187	211	245	219	222	305	180	105	56	36	15	0
Total	100%	0%	0%	1%	3%	4%	10%	11%	13%	11%	12%	16%	9%	5%	3%	2%	1%	0%

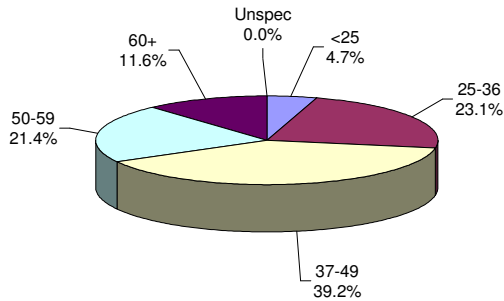
Prison Complex Offenders on January 11, 2005, By Age

Institution	Total	< 17 Years	17 Years	18-20 Years	21-22 Years	23-24 Years	25-27 Years	28-30 Years	31-33 Years	34-36 Years	37-39 Years	40-44 Years	45-49 Years	50-54 Years	55-59 Years	60-64 Years	65+ Years	Unspec
Midstate	645 100%	0 0%	0 0%	0 0%	14 2%	15 2%	63 10%	76 12%	72 11%	79 12%	90 14%	113 18%	61 9%	30 5%	19 3%	8 1%	5 1%	0 0%
NJ State Prison Ad Seg Female	32 100%	0 0%	0 0%	1 3%	4 13%	3 9%	9 28%	4 13%	0 0%	5 16%	3 9%	2 6%	1 3%	0 0%	0 0%	0 0%	0 0%	0 0%
NJ State Prison Main	1,902 100%	0 0%	0 0%	7 0%	26 1%	77 4%	179 9%	189 10%	200 10%	191 10%	209 11%	310 16%	204 11%	139 7%	92 5%	44 2%	35 2%	0 0%
NJ State Prison Total	1,934 100%	0 0%	0 0%	8 0%	30 2%	80 4%	188 10%	193 10%	200 10%	196 10%	212 11%	312 16%	205 11%	139 7%	92 5%	44 2%	35 2%	0 0%
Northern Main	2,113 100%	0 0%	1 0%	37 2%	82 4%	150 7%	264 12%	297 14%	261 12%	268 13%	208 10%	269 13%	152 7%	62 3%	33 2%	15 1%	14 1%	0 0%
Northern Ad Seg Male	526 100%	0 0%	0 0%	10 2%	23 4%	50 10%	66 13%	62 12%	71 13%	55 10%	43 8%	69 13%	40 8%	20 4%	10 2%	4 1%	2 0%	1 0%
Northern Total	2,639 100%	0 0%	1 0%	47 2%	105 4%	200 8%	330 13%	359 14%	332 13%	323 12%	251 10%	338 13%	192 7%	82 3%	43 2%	19 1%	16 1%	1 0%
Riverfront	1,024 100%	0 0%	0 0%	1 0%	19 2%	41 4%	116 11%	132 13%	114 11%	119 12%	117 11%	149 15%	99 10%	63 6%	34 3%	12 1%	8 1%	0 0%
Southern	1,936 100%	0 0%	0 0%	1 0%	12 1%	46 2%	139 7%	297 15%	280 14%	277 14%	246 13%	333 17%	195 10%	74 4%	27 1%	7 0%	2 0%	0 0%
South Woods	3,424 100%	0 0%	0 0%	18 1%	92 3%	172 5%	390 11%	371 11%	387 11%	382 11%	410 12%	515 15%	325 9%	179 5%	103 3%	37 1%	43 1%	0 0%
SUBTOTAL PRISON MALES	16,901 100%	1 0%	2 0%	131 1%	395 2%	763 5%	1,754 10%	2,121 13%	2,107 12%	2,056 12%	1,940 11%	2,574 15%	1,537 9%	787 5%	421 2%	177 1%	134 1%	1 0%

Prison Complex Offenders on January 11, 2005, By Age

Institution	Total	< 17 Years	17 Years	18-20 Years	21-22 Years	23-24 Years	25-27 Years	28-30 Years	31-33 Years	34-36 Years	37-39 Years	40-44 Years	45-49 Years	50-54 Years	55-59 Years	60-64 Years	65+ Years	Unspec
ADTC	674	0	0	6	11	15	23	27	50	56	67	111	86	81	63	32	46	0
	100%	0%	0%	1%	2%	2%	3%	4%	7%	8%	10%	16%	13%	12%	9%	5%	7%	0%
Subtotal	17,575	1	2	137	406	778	1,777	2,148	2,157	2,112	2,007	2,685	1,623	868	484	209	180	1
	100%	0%	0%	1%	2%	4%	10%	12%	12%	12%	11%	15%	9%	5%	3%	1%	1%	0%
Mahan - Female Prison	1,138	0	1	21	55	59	122	98	130	125	154	184	104	53	20	6	6	0
	100%	0%	0%	2%	5%	5%	11%	9%	11%	11%	14%	16%	9%	5%	2%	1%	1%	0%
Total Prison Complex	18,713	1	3	158	461	837	1,899	2,246	2,287	2,237	2,161	2,869	1,727	921	504	215	186	1
	100%	0%	0%	1%	2%	4%	10%	12%	12%	12%	12%	15%	9%	5%	3%	1%	1%	0%

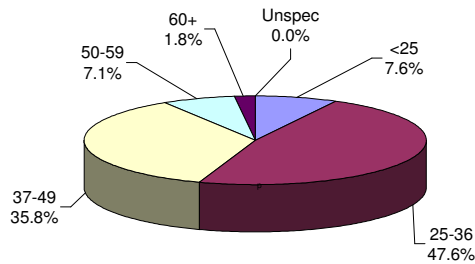
ADTC



The median age at ADTC is 43 years.

Thirty-three percent (33%) of the ADTC offenders are 50 years of age or older. This may be compared with 9% of male prison complex offenders and 7% of female (Edna Mahan) offenders.

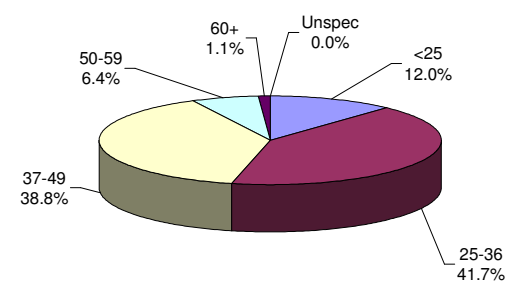
PRISON MALES



The median age for prison complex males (excluding ADTC) is 35 years.

Forty-eight percent (48%) of the male prison complex population are age 25 to 36.

FEMALE FACILITIES



The median age for female inmates (Edna Mahan) is 36 years.

Forty-two percent (42%) of the women at Edna Mahan are age 25 to 36.

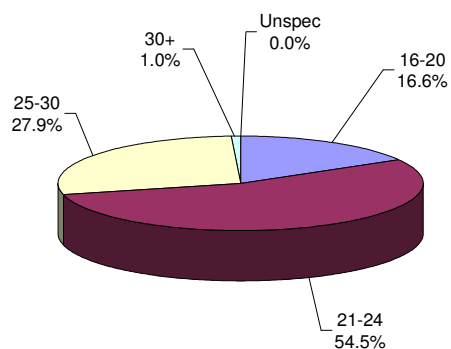
Youth Complex Offenders on January 11, 2005, By Age

Institution	Total	< 17 Years	17 Years	18-20 Years	21-22 Years	23-24 Years	25-27 Years	28-30 Years	31-33 Years	34-36 Years	37-39 Years	40-44 Years	45-49 Years	50-54 Years	55-59 Years	60-64 Years	65+ Years	Unspec
Garden State	1,709	0	12	271	479	442	421	71	8	2	0	2	1	0	0	0	0	0
	100%	0%	1%	16%	28%	26%	25%	4%	0%	0%	0%	0%	0%	0%	0%	0%	0%	0%
Mountainview Main	1,150	1	1	213	329	292	269	33	5	2	1	3	0	1	0	0	0	0
	100%	0%	0%	19%	29%	25%	23%	3%	0%	0%	0%	0%	0%	0%	0%	0%	0%	0%
Mountainview Stokes	109	0	0	2	30	34	41	2	0	0	0	0	0	0	0	0	0	0
	100%	0%	0%	2%	28%	31%	38%	2%	0%	0%	0%	0%	0%	0%	0%	0%	0%	0%
Mountainview Total	1,259	1	1	215	359	326	310	35	5	2	1	3	0	1	0	0	0	0
	100%	0%	0%	17%	29%	26%	25%	3%	0%	0%	0%	3%	0%	1%	0%	0%	0%	0%
Wagner Main	1,022	0	1	125	287	260	265	69	10	3	0	2	0	0	0	0	0	0
	100%	0%	0%	12%	28%	25%	26%	7%	1%	0%	0%	0%	0%	0%	0%	0%	0%	0%
Wagner Ad Seg	224	0	2	57	89	49	25	0	1	0	0	1	0	0	0	0	0	0
	100%	0%	1%	25%	40%	22%	11%	0%	0%	0%	0%	0%	0%	0%	0%	0%	0%	0%
Wagner Adult Boot Camp	110	0	0	34	45	20	11	0	0	0	0	0	0	0	0	0	0	0
	100%	0%	0%	31%	41%	18%	10%	0%	0%	0%	0%	0%	0%	0%	0%	0%	0%	0%
Wagner Total	1,356	0	3	216	421	329	301	69	11	3	0	3	0	0	0	0	0	0
	100%	0%	0%	16%	31%	24%	22%	5%	1%	0%	0%	0%	0%	0%	0%	0%	0%	0%
Total Youth	4,324	1	16	702	1,259	1,097	1,032	175	24	7	1	8	1	1	0	0	0	0
	100%	0%	0%	16%	29%	25%	24%	4%	1%	0%	0%	0%	0%	0%	0%	0%	0%	0%

Offenders In Other Facilities on January 11, 2005, By Age

Institution	Total	< 17 Years	17 Years	18-20 Years	21-22 Years	23-24 Years	25-27 Years	28-30 Years	31-33 Years	34-36 Years	37-39 Years	40-44 Years	45-49 Years	50-54 Years	55-59 Years	60-64 Years	65+ Years	Unspec
Central Medical	19	2	1	0	0	0	0	0	3	3	0	3	1	3	2	0	1	0
	100%	11%	5%	0%	0%	0%	0%	0%	16%	16%	0%	16%	5%	16%	11%	0%	5%	0%
County Jail	523	0	0	25	47	41	65	54	45	72	46	71	39	9	6	1	1	1
	100%	0%	0%	5%	9%	8%	12%	10%	9%	14%	9%	14%	7%	2%	1%	0%	0%	0%
EM/HC	32	0	0	3	1	4	5	6	5	0	4	4	0	0	0	0	0	0
	100%	0%	0%	9%	3%	13%	16%	19%	16%	0%	13%	13%	0%	0%	0%	0%	0%	0%
Halfway House	2,628	0	0	50	164	220	402	323	301	316	235	338	183	55	29	7	5	0
	100%	0%	0%	2%	6%	8%	15%	12%	11%	12%	9%	13%	7%	2%	1%	0%	0%	0%
Total Other Facilities	3,202	2	1	78	212	265	472	383	354	391	285	416	223	67	37	8	7	1
	100%	0%	0%	2%	7%	8%	15%	12%	11%	12%	9%	13%	7%	2%	1%	0%	0%	0%

YOUTH COMPLEX

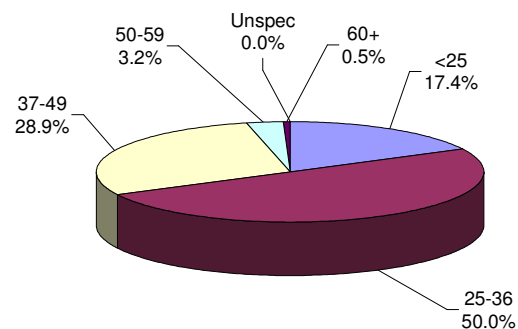


The median age for the youth complex is 23 years.

Eighty-two percent (82%) of all youth complex inmates are between the ages of 21 and 30.

Seventy-one percent (71%) are less than 25 years of age.

OFFENDERS IN OTHER FACILITIES



The median age for offenders in 'other facilities' is 32 years.

The median age for offenders housed in county jail is 32 years, while for those offenders on electronic monitoring/ home confinement is 29 years. Offenders in halfway houses have a median age of 32 years.

**OFFENDERS IN NEW JERSEY CORRECTIONAL INSTITUTIONS
ON JANUARY 11, 2005, BY RACE/ETHNIC IDENTIFICATION**

In these tabulations, a Hispanic is a person of Mexican, Puerto Rican, Cuban, South American or other Spanish culture or origin (Spain or Portugal) regardless of complexion.

OFFENDERS IN CORRECTIONAL INSTITUTIONS ON JANUARY 11, 2005, BY RACE/ETHNIC IDENTIFICATION

Ethnic Identification	Total		Prison Males		Youth Complex		ADTC		Edna Mahan		Other Facilities	
	#	%	#	%	#	%	#	%	#	%	#	%
TOTAL OFFENDERS	26,239	100%	16,901	100%	4,324	100%	674	100%	1,138	100%	3,202	100%
Black	16,497	63%	10,660	63%	2,797	65%	184	27%	645	57%	2,211	69%
White	5,185	20%	3,226	19%	734	17%	378	56%	354	31%	493	15%
Hispanic	4,426	17%	2,932	17%	766	18%	105	16%	133	12%	490	15%
Asian	99	0%	66	0%	20	0%	5	1%	4	0%	4	0%
American Indian	3	0%	2	0%	1	0%	0	0%	0	0%	0	0%
Other or Unspec.	29	0%	15	0%	6	0%	2	0%	2	0%	4	0%

- On January 11, 2005, 63% of all state correctional institution offenders were Black, 20% were White and 17% were Hispanic.

Prison Complex Offenders on January 11, 2005, By Race/Ethnic Identification

Institution	Total	Black	White	Hispanic	Asian	American Indian	Other or Unspec.
Bayside Main	1,217 100%	791 65%	203 17%	219 18%	4 0%	0 0%	0 0%
Bayside Farm	679 100%	444 65%	137 20%	97 14%	0 0%	1 0%	0 0%
Bayside Ancora	371 100%	245 66%	60 16%	65 18%	0 0%	0 0%	1 0%
Bayside Total	2,267 100%	1,480 65%	400 18%	381 17%	4 0%	1 0%	1 0%
CRAF Jones Farm	235 100%	124 53%	72 31%	39 17%	0 0%	0 0%	0 0%
CRAF Reception	867 100%	557 64%	155 18%	152 18%	3 0%	0 0%	0 0%
CRAF Total	1,102 100%	681 62%	227 21%	191 17%	3 0%	0 0%	0 0%
East Jersey Main	1,364 100%	907 66%	195 14%	257 19%	5 0%	0 0%	0 0%
East Jersey Camp	123 100%	83 67%	21 17%	19 15%	0 0%	0 0%	0 0%
East Jersey Marlboro	1 100%	1 100%	0 0%	0 0%	0 0%	0 0%	0 0%
East Jersey Ad Seg	442 100%	290 66%	80 18%	72 16%	0 0%	0 0%	0 0%
East Jersey Total	1,930 100%	1,281 66%	296 15%	348 18%	5 0%	0 0%	0 0%

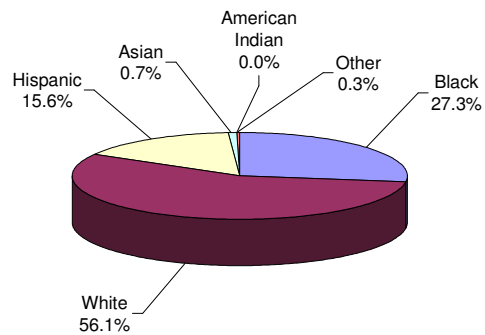
Prison Complex Offenders on January 11, 2005, By Race/Ethnic Identification

Institution	Total	Black	White	Hispanic	Asian	American Indian	Other
Midstate	645 100%	328 51%	188 29%	124 19%	4 1%	0 0%	1 0%
NJ State Prison Ad Seg Female	32 100%	16 1%	10 1%	6 0%	0 0%	0 0%	0 0%
NJ State Prison Main	1,902 100%	1,238 64%	390 20%	259 13%	13 1%	0 0%	2 0%
NJ State Prison Total	1,934 100%	1,254 65%	400 21%	265 14%	13 1%	0 0%	2 0%
Northern Main	2,113 100%	1,447 68%	249 12%	407 19%	7 0%	0 0%	3 0%
Northern Ad Seg Male	526 100%	362 69%	46 9%	115 22%	1 0%	0 0%	2 0%
Northern Total	2,639 100%	1,809 69%	295 11%	522 20%	8 0%	0 0%	5 0%
Riverfront	1,024 100%	634 62%	188 18%	195 19%	6 1%	1 0%	0 0%
Southern	1,936 100%	1,244 64%	362 19%	321 17%	8 0%	0 0%	1 0%
South Woods	3,424 100%	1,949 57%	870 25%	585 17%	15 0%	0 0%	5 0%
SUBTOTAL PRISON MALES	16,901 100%	10,660 63%	3,226 19%	2,932 17%	66 0%	2 0%	15 0%

Prison Complex Offenders on January 11, 2005, By Race/Ethnic Identification

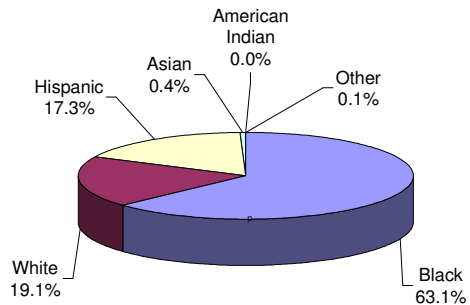
Institution	Total	Black	White	Hispanic	Asian	American Indian	Other
ADTC	674	184	378	105	5	0	2
	100%	27%	56%	16%	1%	0%	0%
Subtotal	17,575	10,844	3,604	3,037	71	2	17
	100%	62%	21%	17%	0%	0%	0%
Mahan - Female Prison	1,138	645	354	133	4	0	2
	100%	57%	31%	12%	0%	0%	0%
Total Prison Complex	18,713	11,489	3,958	3,170	75	2	19
	100%	61%	21%	17%	0%	0%	0%

ADTC



White offenders comprised 56% of the offenders at ADTC.

PRISON MALES

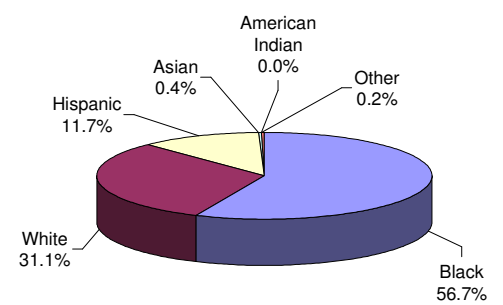


The largest proportion of Black male offenders in a major facility was at Northern State Prison (69%).

The largest proportion of White male offenders at a major facility was at Mid-State Correctional Facility (29%).

The largest proportion of Hispanic male offenders at a major facility was at Northern State Prison (20%).

FEMALE FACILITIES



Black offenders comprised 57% of the population at Edna Mahan. This may be compared with Black offenders comprising 63% of prison complex males.

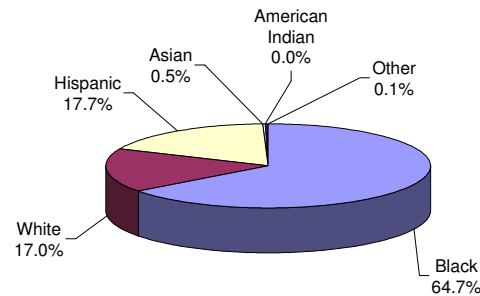
Youth Complex Offenders on January 11, 2005, By Race/Ethnic Identification

Institution	Total	Black	White	Hispanic	Asian	American Indian	Other
Garden State	1,709	1,030	342	329	7	1	0
	100%	60%	20%	19%	0%	0%	0%
Mountianview Main	1,150	735	230	177	7	0	1
	100%	64%	20%	15%	1%	0%	0%
Mountianview Stokes	109	78	15	13	1	0	2
	100%	72%	14%	12%	1%	0%	2%
Mountianview Total	1,259	813	245	190	8	0	3
	100%	65%	19%	15%	1%	0%	0%
Wagner Main	1,022	705	117	194	4	0	2
	100%	69%	11%	19%	0%	0%	0%
Wagner Ad Seg	224	172	14	36	1	0	1
	100%	77%	6%	16%	0%	0%	0%
Wagner Adult Boot Camp	110	77	16	17	0	0	0
	100%	70%	15%	15%	0%	0%	0%
Wagner Total	1,356	954	147	247	5	0	3
	100%	70%	11%	18%	0%	0%	0%
Total Youth	4,324	2,797	734	766	20	1	6
	100%	65%	17%	18%	0%	0%	0%

Offenders In Other Facilities on January 11, 2005, By Race/Ethnic Identification

Institution	Total	Black	White	Hispanic	Asian	American Indian	Other
Central Medical	19	11	1	7	0	0	0
	100%	58%	5%	37%	0%	0%	0%
County Jail	523	326	111	83	0	0	3
	100%	62%	21%	16%	0%	0%	1%
EM/HC	32	21	7	4	0	0	0
	100%	66%	22%	13%	0%	0%	0%
Halfway House	2,628	1,853	374	396	4	0	1
	100%	71%	14%	15%	0%	0%	0%
Total Other Facilities	3,202	2,211	493	490	4	0	4
	100%	69%	15%	15%	0%	0%	0%

YOUTH COMPLEX

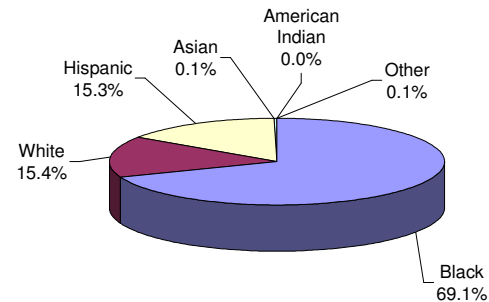


The largest proportion of Black offenders in the youth complex facilities was housed at Wagner (70%).

The largest proportion of White offenders in the youth complex facilities was housed at Garden State (20%).

The largest proportion of Hispanic offenders in the youth complex facilities was housed at Garden State (19%).

OFFENDERS IN OTHER FACILITIES



Race and ethnicity for inmates assigned to 'other facilities' was roughly equivalent to that for the total adult inmate population.

**OFFENDERS IN NEW JERSEY CORRECTIONAL INSTITUTIONS
ON JANUARY 11, 2005, BY COUNTY OF COMMITMENT**

OFFENDERS IN NEW JERSEY CORRECTIONAL INSTITUTIONS ON JANUARY 11, 2005, BY COUNTY OF COMMITMENT

County of Commitment	Total		Prison Males		Youth Complex		ADTC		Edna Mahan		Other Facilities	
	#	%	#	%	#	%	#	%	#	%	#	%
TOTAL OFFENDERS	26,239	100%	16,901	100%	4,324	100%	674	100%	1,138	100%	3,202	100%
Atlantic	1,808	7%	1176	7%	221	5%	31	5%	132	12%	248	8%
Bergen	1,004	4%	639	4%	163	4%	34	5%	48	4%	120	4%
Burlington	636	2%	355	2%	144	3%	50	7%	23	2%	64	2%
Camden	3,404	13%	2137	13%	561	13%	72	11%	143	13%	491	15%
Cape May	460	2%	289	2%	72	2%	18	3%	21	2%	60	2%
Cumberland	614	2%	388	2%	97	2%	22	3%	17	1%	90	3%
Essex	4,607	18%	3236	19%	718	17%	50	7%	145	13%	458	14%
Gloucester	326	1%	209	1%	50	1%	18	3%	10	1%	39	1%
Hudson	2,388	9%	1603	9%	374	9%	29	4%	88	8%	294	9%
Hunterdon	82	0%	51	0%	11	0%	10	1%	6	1%	4	0%
Mercer	1,390	5%	872	5%	284	7%	31	5%	51	4%	152	5%
Middlesex	1,403	5%	880	5%	251	6%	45	7%	62	5%	165	5%
Monmouth	1,393	5%	905	5%	236	5%	43	6%	71	6%	138	4%
Morris	374	1%	229	1%	51	1%	29	4%	26	2%	39	1%
Ocean	883	3%	548	3%	154	4%	37	5%	64	6%	80	2%
Passaic	2,204	8%	1327	8%	410	9%	69	10%	79	7%	319	10%
Salem	218	1%	122	1%	30	1%	10	1%	6	1%	50	2%
Somerset	371	1%	232	1%	59	1%	14	2%	17	1%	49	2%
Sussex	196	1%	121	1%	29	1%	10	1%	16	1%	20	1%
Union	2,176	8%	1382	8%	374	9%	34	5%	100	9%	286	9%
Warren	195	1%	103	1%	34	1%	15	2%	9	1%	34	1%
Not Coded	107	0%	97	1%	1	0%	3	0%	4	0%	2	0%

- Essex County has the highest percentage of commitments at the prison complex (19%) and the youth complex (17%).
- Essex County has the highest percentage of commitments at Edna Mahan (13%).
- Camden County has the highest percentage of commitments at ADTC (11%).
- Camden County has the highest percentage of commitments (15%) at other adult facilities.
- Two counties, Essex and Camden, combine to comprise approximately a third of total DOC commitments.

Prison Complex Offenders on January 11, 2005, By County Of Commitment

Institution	Total	Atl	Ber	Burl	Cam	Cape May	Cum	Ess	Glou	Hud	Hunt	Mer	Mid	Mon	Mor	Oc	Pas	Sal	Som	Sus	Un	War	Not Coded
Bayside Main	1,217 100%	100 8%	39 3%	25 2%	192 16%	21 2%	28 2%	183 15%	16 1%	117 10%	4 0%	54 4%	65 5%	81 7%	11 1%	45 4%	83 7%	18 1%	11 1%	11 1%	105 9%	6 0%	2 0%
Bayside Farm	679 100%	59 9%	24 4%	16 2%	119 18%	13 2%	14 2%	107 16%	7 1%	60 9%	2 0%	40 6%	25 4%	29 4%	9 1%	26 4%	49 7%	9 1%	8 1%	3 0%	57 8%	2 0%	1 0%
Bayside Ancora	371 100%	42 11%	9 2%	7 2%	57 15%	11 3%	13 4%	56 15%	4 1%	35 9%	2 1%	13 4%	25 7%	18 5%	3 1%	7 2%	28 8%	0 0%	4 1%	0 0%	36 10%	1 0%	0 0%
Bayside Total	2,267 100%	201 9%	72 3%	48 2%	368 16%	45 2%	55 2%	346 15%	27 1%	212 9%	8 0%	107 5%	115 5%	128 6%	23 1%	78 3%	160 7%	27 1%	23 1%	14 1%	198 9%	9 0%	3 0%
CRAF Jones Farm	235 100%	9 4%	8 3%	6 3%	33 14%	4 2%	2 1%	24 10%	1 0%	39 17%	5 2%	8 3%	17 7%	11 5%	10 4%	9 4%	20 9%	0 0%	3 1%	5 2%	17 7%	4 2%	0 0%
CRAF Reception	867 100%	56 6%	25 3%	9 1%	127 15%	17 2%	13 1%	160 18%	11 1%	95 11%	3 0%	45 5%	51 6%	43 5%	11 1%	25 3%	85 10%	4 0%	12 1%	4 0%	61 7%	5 1%	5 1%
CRAF Total	1,102 100%	65 6%	33 3%	15 1%	160 15%	21 2%	15 1%	184 17%	12 1%	134 12%	8 1%	53 5%	68 6%	54 5%	21 2%	34 3%	105 10%	4 0%	15 1%	9 1%	78 7%	9 1%	5 0%
East Jersey Main	1,364 100%	38 3%	63 5%	22 2%	92 7%	9 1%	22 2%	389 29%	14 1%	138 10%	2 0%	69 5%	61 4%	74 5%	19 1%	37 3%	136 10%	4 0%	25 2%	8 1%	132 10%	2 0%	8 1%
East Jersey Camp	123 100%	3 2%	9 7%	0 0%	5 4%	1 1%	1 1%	25 20%	0 0%	23 19%	1 1%	5 4%	11 9%	9 7%	3 2%	2 2%	12 10%	1 1%	1 1%	0 0%	10 8%	0 0%	1 1%
East Jersey Marlboro	1 100%	0 0%	0 0%	0 0%	0 0%	0 0%	0 0%	0 0%	0 0%	0 0%	0 0%	1 100%	0 0%	0 0%	0 0%	0 0%	0 0%	0 0%	0 0%	0 0%	0 0%	0 0%	0 0%
East Jersey Ad Seg	442 100%	43 10%	17 4%	9 2%	51 12%	7 2%	7 2%	104 24%	8 2%	51 12%	0 0%	28 6%	14 3%	11 2%	5 1%	15 3%	26 6%	5 1%	6 1%	1 0%	30 7%	4 1%	0 0%
East Jersey Total	1,930 100%	84 4%	89 5%	31 2%	148 8%	17 1%	30 2%	518 27%	22 1%	212 11%	3 0%	103 5%	86 4%	94 5%	27 1%	54 3%	174 9%	10 1%	32 2%	9 0%	172 9%	6 0%	9 0%

Prison Complex Offenders on January 11, 2005, By County Of Commitment

Institution	Total	Atl	Ber	Burl	Cam	Cape May	Cum	Ess	Glou	Hud	Hunt	Mer	Mid	Mon	Mor	Oc	Pas	Sal	Som	Sus	Un	War	Not Coded
Midstate	645 100%	34 5%	25 4%	18 3%	59 9%	10 2%	20 3%	76 12%	5 1%	47 7%	5 1%	41 6%	63 10%	49 8%	14 2%	50 8%	53 8%	6 1%	6 1%	6 1%	53 8%	5 1%	0 0%
NJ State Prison Ad Seg Female	32 100%	1 0%	0 0%	1 0%	3 0%	1 0%	2 0%	3 0%	1 0%	3 0%	0 0%	1 0%	5 0%	3 0%	0 0%	1 0%	4 0%	0 0%	1 0%	0 0%	1 0%	0 0%	1 0%
NJ State Prison Main	1,902 100%	114 6%	85 4%	48 2%	178 9%	22 1%	48 2%	430 22%	16 1%	117 6%	2 0%	141 7%	106 5%	106 5%	27 1%	73 4%	126 7%	10 1%	32 2%	15 1%	144 7%	11 1%	51 3%
NJ State Prison Total	1,934 100%	115 6%	85 4%	49 3%	181 9%	23 1%	50 3%	433 22%	17 1%	120 6%	2 0%	142 7%	111 6%	109 6%	27 1%	74 4%	130 7%	10 1%	33 2%	15 1%	145 7%	11 1%	52 3%
Northern Main	2,113 100%	95 4%	91 4%	30 1%	157 7%	14 1%	24 1%	570 27%	14 1%	270 13%	5 0%	84 4%	117 6%	99 5%	24 1%	40 2%	203 10%	8 0%	27 1%	14 1%	211 10%	10 0%	6 0%
Northern Ad Seg Male	526 100%	16 3%	33 6%	5 1%	47 9%	6 1%	5 1%	149 28%	2 0%	59 11%	0 0%	16 3%	29 6%	25 5%	8 2%	6 1%	61 12%	2 0%	8 2%	2 0%	45 9%	0 0%	2 0%
Northern Total	2,639 100%	111 4%	124 5%	35 1%	204 8%	20 1%	29 1%	719 27%	16 1%	329 12%	5 0%	100 4%	146 6%	124 5%	32 1%	46 2%	264 10%	10 0%	35 1%	16 1%	256 10%	10 0%	8 0%
Riverfront	1,024 100%	60 6%	28 3%	31 3%	240 23%	19 2%	36 4%	141 14%	18 2%	75 7%	6 1%	65 6%	45 4%	59 6%	10 1%	28 3%	59 6%	6 1%	13 1%	7 1%	70 7%	6 1%	2 0%
Southern	1,936 100%	190 10%	52 3%	44 2%	278 14%	43 2%	39 2%	302 16%	27 1%	200 10%	3 0%	96 5%	85 4%	104 5%	21 1%	42 2%	165 9%	14 1%	23 1%	10 1%	181 9%	16 1%	1 0%
South Woods	3424 100%	316 9%	131 4%	84 2%	499 15%	91 3%	114 3%	517 15%	65 2%	274 8%	11 0%	165 5%	161 5%	184 5%	54 2%	142 4%	217 6%	35 1%	52 2%	35 1%	229 7%	31 1%	17 0%
SUBTOTAL PRISON MALES	16,901 100%	1,176 7%	639 4%	355 2%	2,137 13%	289 2%	388 2%	3,236 19%	209 1%	1,603 9%	51 0%	872 5%	880 5%	905 5%	229 1%	548 3%	1,327 8%	122 1%	232 1%	121 1%	1,382 8%	103 1%	97 1%

Prison Complex Offenders on January 11, 2005, By County Of Commitment

Institution	Total	Atl	Ber	Burl	Cam	Cape May	Cum	Ess	Glou	Hud	Hunt	Mer	Mid	Mon	Mor	Oc	Pas	Sal	Som	Sus	Un	War	Not Coded
ADTC	674 100%	31 5%	34 5%	50 7%	72 11%	18 3%	22 3%	50 7%	18 3%	29 4%	10 1%	31 5%	45 7%	43 6%	29 4%	37 5%	69 10%	10 1%	14 2%	10 1%	34 5%	15 2%	3 0%
Subtotal	17,575 100%	1,207 7%	673 4%	405 2%	2,209 13%	307 2%	410 2%	3,286 19%	227 1%	1,632 9%	61 0%	903 5%	925 5%	948 5%	258 1%	585 3%	1,396 8%	132 1%	246 1%	131 1%	1,416 8%	118 1%	100 1%
Mahan - Female Prison	1,138 100%	132 12%	48 4%	23 2%	143 13%	21 2%	17 1%	145 13%	10 1%	88 8%	6 1%	51 4%	62 5%	71 6%	26 2%	64 6%	79 7%	6 1%	17 1%	16 1%	100 9%	9 1%	4 0%
Total Prison Complex	18,713 100%	1,339 7%	721 4%	428 2%	2,352 13%	328 2%	427 2%	3,431 18%	237 1%	1,720 9%	67 0%	954 5%	987 5%	1,019 5%	284 2%	649 3%	1,475 8%	138 1%	263 1%	147 1%	1,516 8%	127 1%	104 1%

Youth Complex Offenders on January 11, 2005, By County Of Commitment

Institution	Total	Atl	Ber	Burl	Cam	Cape May	Cum	Ess	Glou	Hud	Hunt	Mer	Mid	Mon	Mor	Oc	Pas	Sal	Som	Sus	Un	War	Not Coded
Garden State	1,709 100%	98 6%	69 4%	64 4%	232 14%	25 1%	49 3%	273 16%	19 1%	109 6%	3 0%	122 7%	88 5%	113 7%	26 2%	73 4%	146 9%	13 1%	25 1%	11 1%	137 8%	14 1%	0 0%
Mountianview Main	1,150 100%	46 4%	42 4%	43 4%	136 12%	27 2%	25 2%	155 13%	13 1%	120 10%	5 0%	65 6%	73 6%	63 5%	12 1%	33 3%	126 11%	7 1%	18 2%	11 1%	121 11%	9 1%	0 0%
Mountianview Stokes	109 100%	3 3%	4 4%	1 1%	10 9%	1 1%	2 2%	26 24%	3 3%	9 8%	0 0%	4 4%	4 4%	5 5%	1 1%	7 6%	17 16%	0 0%	0 0%	0 0%	10 9%	2 2%	0 0%
Mountianview Total	1,259 100%	49 4%	46 4%	44 3%	146 12%	28 2%	27 2%	181 14%	16 1%	129 10%	5 0%	69 5%	77 6%	68 5%	13 1%	40 3%	143 11%	7 1%	18 1%	11 1%	131 10%	11 1%	0 0%
Wagner Main	1,022 100%	53 5%	39 4%	25 2%	141 14%	14 1%	17 2%	180 18%	13 1%	104 10%	3 0%	75 7%	66 6%	40 4%	12 1%	32 3%	95 9%	10 1%	13 1%	6 1%	76 7%	7 1%	1 0%
Wagner Ad Seg	224 100%	14 6%	3 1%	6 3%	22 10%	2 1%	3 1%	67 30%	1 0%	24 11%	0 0%	15 7%	16 7%	9 4%	0 0%	5 2%	16 7%	0 0%	1 0%	1 0%	18 8%	1 0%	0 0%
Wagner Adult Boot Camp	110 100%	7 6%	6 5%	5 5%	20 18%	3 3%	1 1%	17 15%	1 1%	8 7%	0 0%	3 3%	4 4%	6 5%	0 0%	4 4%	10 9%	0 0%	2 2%	0 0%	12 11%	1 1%	0 0%
Wagner Total	1,356 100%	74 5%	48 4%	36 3%	183 13%	19 1%	21 2%	264 19%	15 1%	136 10%	3 0%	93 7%	86 6%	55 4%	12 1%	41 3%	121 9%	10 1%	16 1%	7 1%	106 8%	9 1%	1 0%
Total Youth	4,324 100%	221 5%	63 1%	22 1%	92 2%	9 0%	22 1%	389 9%	14 0%	138 3%	2 0%	69 2%	61 1%	74 2%	19 0%	37 1%	136 3%	4 0%	25 1%	8 0%	132 3%	2 0%	8 0%

Offenders In Other Facilities on January 11, 2005, By County Of Commitment

Institution	Total	Atl	Ber	Burl	Cam	Cape May	Cum	Ess	Glou	Hud	Hunt	Mer	Mid	Mon	Mor	Oc	Pas	Sal	Som	Sus	Un	War	Not Coded
Central Medical	19 100%	2 11%	2 11%	0 0%	2 11%	0 0%	1 5%	2 11%	1 5%	5 26%	0 0%	0 0%	1 5%	2 11%	0 0%	0 0%	0 0%	0 0%	0 0%	0 0%	0 0%	1 5%	0 0%
County Jail	523 100%	72 14%	12 2%	6 1%	97 19%	6 1%	41 8%	53 10%	2 0%	34 7%	0 0%	8 2%	17 3%	30 6%	5 1%	2 0%	42 8%	27 5%	12 2%	5 1%	30 6%	20 4%	2 0%
EM/HC	32 100%	2 6%	0 0%	1 3%	6 19%	0 0%	2 6%	1 3%	0 0%	2 6%	0 0%	3 9%	2 6%	2 6%	1 3%	3 9%	5 16%	0 0%	0 0%	0 0%	1 3%	1 3%	0 0%
Halfway House	2,628 100%	172 7%	106 4%	57 2%	386 15%	54 2%	46 2%	402 15%	36 1%	253 10%	4 0%	141 5%	145 6%	104 4%	33 1%	75 3%	272 10%	23 1%	37 1%	15 1%	255 10%	12 0%	0 0%
Total Other Facilities	3,202 100%	248 8%	120 4%	64 2%	491 15%	60 2%	90 3%	458 14%	39 1%	294 9%	4 0%	152 5%	165 5%	138 4%	39 1%	80 2%	319 10%	50 2%	49 2%	20 1%	286 9%	34 1%	2 0%