

NEW JERSEY DEPARTMENT OF CORRECTIONS

Devon Brown, Commissioner



OFFENDER CHARACTERISTICS REPORT

ON JANUARY 13, 2003

Policy Analysis and Planning
January 2004

INTRODUCTION

This report has been developed to provide information regarding offender characteristics in each correctional complex, major institution and satellite housing unit under the jurisdiction of the New Jersey Department of Corrections on January 13, 2003. The selected characteristics compiled in this report are Base Offense at Admission, total Term at Admission, Ethnicity, Age, County of Commitment and Mandatory Minimum Term.

The Prison Complex includes the New Jersey State Prison, Central Reception and Assignment Facility, East Jersey State Prison, Bayside State prison, Riverfront State Prison, Mid-State, Southern State, Northern State Prison, South Woods, Edna Mahan Correctional Facility for Women and the Adult Diagnostic and Treatment Center (ADTC is a facility for adult male sex offenders).

NOTE: In our data tables we provide separate subtotals for ADTC and Edna Mahan Correctional Facility for Women due to the interest in these unique populations. The remainder of the Prison Complex is labeled "Prison Males".

The Youth Correctional Complex consists of the Garden State Youth Correctional Facility, the Albert C. Wagner Youth Correctional Facility and the Mountainview Youth Correctional Facility.

"Offenders in Other Facilities" include state-sentenced inmates housed in county jails, Halfway Houses, the Central Medical Unit (St. Francis Hospital) and those assigned to Electronic Monitoring/Home Confinement.

"Not Coded" are records for offenders in the correctional system for whom admission characteristics data have not been entered into the computerized information system as of January 13, 2003.

HIGHLIGHTS

- *Thirty-nine percent (39%) of all New Jersey Department of Corrections residents were committed for crimes against persons which include Homicide, Sexual Assault, Aggravated/Simple Assault, Assault, Robbery, Kidnapping, Other Sex Offenses and Other Person Offenses.*
- *Thirty-five percent (35%) of all Department of Corrections residents have been committed for narcotics law violations, including possession, sale and distribution. Eighty-two percent (82%) of all narcotics law violations are sale/distribution offenses.*
- *The median term for Department of Corrections residents is six years.*
- *Thirty-one percent (31%) of all New Jersey Department of Corrections residents were committed with maximum sentences of 10 years or more. Of the total, four percent (4%) are serving Life Sentences and 16 offenders are under Capital Sentence.*
- *Sixty percent (60%) of New Jersey Department of Corrections residents housed in the State System have sentences that include parole ineligibility terms.*
- *Forty-four percent (44%) of all residents in the New Jersey Department of Corrections are 30 years of age or younger. The median age for inmates in our adult facilities is 32.*
- *Sixty-four percent (64%) of New Jersey Department of Corrections residents are Black, while 19% are White and 17% are Hispanic.*
- *Of the 21 New Jersey counties, ten (Atlantic, Bergen, Camden, Essex, Hudson, Mercer, Middlesex, Monmouth, Passaic and Union) account for 82% of Total Department of Corrections Residents. Essex County is the highest contributor with 18%.*

NOTES

DUE TO SOFTWARE AND ROUNDING:

- **WORKSHEET ROW AND COLUMN TOTALS DO NOT ALWAYS EQUAL 100 PERCENT.**
- **PIE CHART PERCENTAGES ALWAYS EQUAL 100 PERCENT.**
- **PIE CHART PERCENTAGES MAY DIFFER SLIGHTLY FROM WORKSHEET PERCENTAGES.**
- **ACCOMPANYING NARRATIVES REFLECT PIE CHART PERCENTAGES.**

TOTAL RESIDENTS IN NEW JERSEY STATE CORRECTIONAL INSTITUTIONS AND SATELLITES ON JANUARY 13, 2003

TOTAL RESIDENTS		26,387
PRISON COMPLEX	18,465	YOUTH COMPLEX
ADTC	619	GARDEN STATE TOTAL
Bayside – Main	1,455	Mountainview - Main
Bayside – Farm	705	Mountainview – Stokes
Bayside – Ancora	326	MOUNTAINVIEW TOTAL
BAYSIDE TOTAL	2,486	
		Wagner – Main
CRAF – Jones Farm	195	Wagner – Ad Seg
CRAF – Reception	772	Wagner – Adult Boot Camp
CRAF TOTAL	967	WAGNER TOTAL
East Jersey – Main	1,410	OTHER FACILITIES
East Jersey – Camp	127	Central Medical
East Jersey – Marlboro	128	Halfway Houses
East Jersey – Ad Seg	439	County Jail
EAST JERSEY TOTAL	2,104	Electronic Monitoring (EM)
EDNA MAHAN CORR FACILITY	1,146	
MID-STATE TOTAL	623	
NJ State Prison – Ad Seg Female	28	
NJ State Prison – Main	1,876	
NJ STATE PRISON TOTAL	1,904	
Northern State – Main	2,009	
Northern State – Ad Seg Male	447	
NORTHERN STATE TOTAL	2,456	
RIVERFRONT TOTAL	1,153	
SOUTHERN STATE TOTAL	1,690	
SOUTH WOODS TOTAL	3,317	

TABLE OF CONTENTS

REPORT NAME	PAGE
<i>OFFENDERS IN NEW JERSEY CORRECTIONAL INSTITUTIONS BY BASE OFFENSE</i>	7
<i>Prison Complex Offenders</i>	8-10
<i>Youth Complex Offenders</i>	11
<i>Adult Offenders in Other Facilities</i>	12
<i>OFFENDERS IN NEW JERSEY CORRECTIONAL INSTITUTIONS BY TOTAL TERM AT ADMISSION</i>	13
<i>Prison Complex Offenders</i>	14-16
<i>Youth Complex Offenders</i>	17
<i>Adult Offenders in Other Facilities</i>	18
<i>OFFENDERS IN NEW JERSEY CORRECTIONAL INSTITUTIONS BY MANDATORY MINIMUM TERM</i>	19
<i>Prison Complex Offenders</i>	20-22
<i>Youth Complex Offenders</i>	23
<i>Adult Offenders in Other Facilities</i>	24
<i>OFFENDERS IN NEW JERSEY CORRECTIONAL INSTITUTIONS BY AGE</i>	25
<i>Prison Complex Offenders</i>	26-28
<i>Youth Complex Offenders</i>	29
<i>Adult Offenders in Other Facilities</i>	30
<i>OFFENDERS IN NEW JERSEY CORRECTIONAL INSTITUTIONS BY ETHNIC IDENTIFICATION</i>	31
<i>Prison Complex Offenders</i>	32-34
<i>Youth Complex Offenders</i>	35
<i>Adult Offenders in Other Facilities</i>	36
<i>OFFENDERS IN NEW JERSEY CORRECTIONAL INSTITUTIONS BY COUNTY OF COMMITMENT</i>	37
<i>Prison Complex Offenders</i>	38-40
<i>Youth Complex Offenders</i>	41
<i>Adult Offenders in Other Facilities</i>	42

**OFFENDERS IN NEW JERSEY CORRECTIONAL INSTITUTIONS
ON JANUARY 13, 2003, BY BASE OFFENSE**

In these tabulations, the base offense is that which is the most serious offense at the time of admission. These figures reflect base or controlling offenses at admissions only, and do not include any offenses in addition to the base offense in the case of multiple sentences at admission. Additional sentences imposed following initial admission to the state correctional system are not included in this data.

- Violent offenses include homicide, sexual assault, aggravated and simple assault, robbery, kidnapping, other sex offenses and other person offenses (i.e. terroristic threats, coercion, larceny from a person, death by auto and negligent manslaughter).
- Property offenses include burglary, arson, theft, forgery, embezzlement, and receiving/possessing stolen property.
- Public policy offenses include racketeering, gambling, corruption, perjury, escape, bail jumping, juvenile and family related offenses and conspiracy.
- Weapons offenses include weapon possession and operation.
- Drug violations include distribution, manufacture, possession and use of drugs. Virtually all drug offenses are for sale and distribution rather than for mere possession.

OFFENDERS IN CORRECTIONAL INSTITUTIONS ON JANUARY 13, 2003, BY BASE OFFENSE

Base Offense	Total		Prison Males		Youth Complex		ADTC		Edna Mahan		Other Facilities	
	#	%	#	%	#	%	#	%	#	%	#	%
TOTAL OFFENDERS	26,387	100%	16,700	100%	4,324	100%	619	100%	1,146	100%	3,598	100%
Violent Offenses	10,380	39%	7,513	45%	1,390	32%	573	93%	361	32%	543	15%
Property Offenses	3,131	12%	2,078	12%	398	9%	0	0%	192	17%	463	13%
Miscellaneous	1,367	5%	864	5%	245	6%	35	6%	49	4%	174	5%
Weapons	901	3%	539	3%	218	5%	1	0%	9	1%	134	4%
Drugs	9,122	35%	4,914	29%	1,878	43%	1	0%	480	42%	1,849	51%
Not Coded	1,486	6%	792	5%	195	5%	9	1%	55	5%	435	12%

- Inmates with violent offenses comprise 45% of the prison complex, 32% of the youth complex, 93% of ADTC, 32% of Edna Mahan, and 15% of other adult facilities. The department-wide percentage of violent offenders (39%) represents the lowest percentage of such offenders in the department's history.

Prison Complex Offenders on January 13, 2003, By Base Offense

Institution	Total	Violent Offenses	Homicide	Sexual Assault	Assault	Robbery	Kidnap	Other Sex	Other Person	Property	Public Policy	Weapons	Drugs	Not Coded
Bayside	1,455	464	93	30	118	197	6	0	20	226	86	65	544	70
Main	100%	32%	6%	2%	8%	14%	0%	0%	1%	16%	6%	4%	37%	5%
Bayside	705	230	74	0	57	89	5	0	5	116	31	27	256	45
Farm	100%	33%	10%	0%	8%	13%	1%	0%	1%	16%	4%	4%	36%	6%
Bayside	326	21	0	0	2	12	0	0	7	65	15	13	201	11
Ancora	100%	6%	0%	0%	1%	4%	0%	0%	2%	20%	5%	4%	62%	3%
Bayside Total	2,486	715	167	30	177	298	11	0	32	407	132	105	1,001	126
	100%	29%	7%	1%	7%	12%	0%	0%	1%	16%	5%	4%	40%	5%
CRAF	195	1	0	0	0	1	0	0	0	41	13	0	131	9
Jones Farm	100%	1%	0%	0%	0%	1%	0%	0%	0%	21%	7%	0%	67%	5%
CRAF	772	153	23	17	47	54	2	3	7	101	47	27	281	163
Reception	100%	20%	3%	2%	6%	7%	0%	0%	1%	13%	6%	3%	36%	21%
CRAF Total	967	154	23	17	47	55	2	3	7	142	60	27	412	172
	100%	16%	2%	2%	5%	6%	0%	0%	1%	15%	6%	3%	43%	18%
East Jersey	1,410	964	424	101	99	303	34	2	1	85	53	29	227	52
Main	100%	68%	30%	7%	7%	21%	2%	0%	0%	6%	4%	2%	16%	4%
East Jersey	127	51	0	0	14	34	0	0	3	16	6	4	46	4
Camp	100%	40%	0%	0%	11%	27%	0%	0%	2%	13%	5%	3%	36%	3%
East Jersey	128	19	0	0	6	12	0	0	1	30	4	4	64	7
Marlboro	100%	15%	0%	0%	5%	9%	0%	0%	1%	23%	3%	3%	50%	5%
East Jersey	439	228	47	25	37	112	3	1	3	49	30	16	97	19
Ad Seg	100%	52%	11%	6%	8%	26%	1%	0%	1%	11%	7%	4%	22%	4%
East Jersey Total	2,104	1,262	471	126	156	461	37	3	8	180	93	53	434	82
	100%	60%	22%	6%	7%	22%	2%	0%	0%	9%	4%	3%	21%	4%

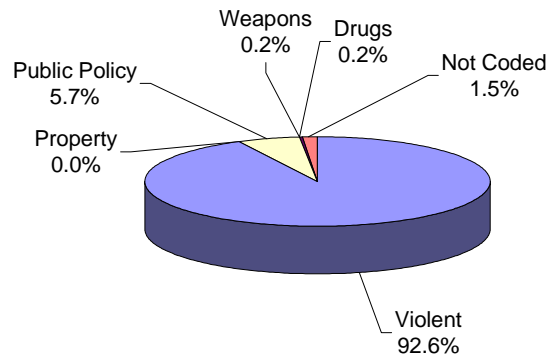
Prison Complex Offenders on January 13, 2003, By Base Offense

Institution	Total	Violent Offenses	Homicide	Sexual Assault	Assault	Robbery	Kidnap	Other Sex	Other Person	Property	Public Policy	Weapons	Drugs	Not Coded
Midstate	623 100%	220 35%	6 1%	141 23%	24 4%	27 4%	3 0%	11 2%	8 1%	103 17%	88 14%	18 3%	165 26%	29 5%
NJ State Prison Ad Seg Female	28 100%	13 46%	3 11%	0 0%	3 11%	5 18%	1 4%	0 0%	1 4%	6 21%	3 11%	0 0%	6 21%	0 0%
NJ State Prison Main	1,876 100%	1,550 83%	1,016 54%	115 6%	79 4%	280 15%	53 3%	3 0%	4 0%	80 4%	37 2%	28 1%	139 7%	42 2%
NJ State Prison Total	1,904 100%	1,563 82%	1,019 54%	115 6%	82 4%	285 15%	54 3%	3 0%	5 0%	86 5%	40 2%	28 1%	145 8%	42 2%
Northern Main	2,009 100%	907 45%	188 9%	87 4%	185 9%	408 20%	21 1%	3 0%	15 1%	229 11%	113 6%	82 4%	609 30%	69 3%
Northern Ad Seg Male	447 100%	224 50%	70 16%	16 4%	48 11%	82 18%	5 1%	0 0%	3 1%	60 13%	22 5%	15 3%	115 26%	11 2%
Northern Total	2,456 100%	1,131 46%	258 11%	103 4%	233 9%	490 20%	26 1%	3 0%	18 1%	289 12%	135 5%	97 4%	724 29%	80 3%
Riverfront	1,153 100%	538 47%	101 9%	120 10%	89 8%	198 17%	8 1%	7 1%	15 1%	119 10%	69 6%	34 3%	350 30%	43 4%
Southern	1,690 100%	470 28%	86 5%	38 2%	103 6%	226 13%	8 0%	0 0%	9 1%	281 17%	83 5%	65 4%	716 42%	75 4%
South Woods	3,317 100%	1,460 44%	266 8%	307 9%	239 7%	561 17%	34 1%	12 0%	41 1%	471 14%	164 5%	112 3%	967 29%	143 4%
SUBTOTAL PRISON MALES	16,700 100%	7,513 45%	2,397 14%	997 6%	1,150 7%	2,601 16%	183 1%	42 0%	143 1%	2,078 12%	864 5%	539 3%	4,914 29%	792 5%

Prison Complex Offenders on January 13, 2003, By Base Offense

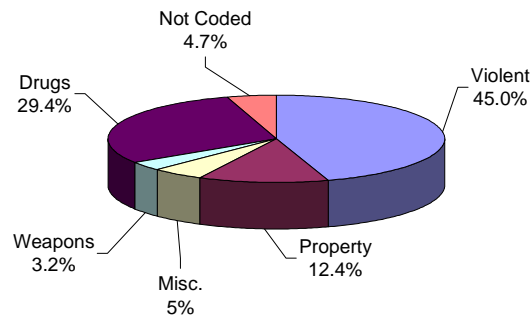
Institution	Total	Violent Offenses	Homicide	Sexual Assault	Assault	Robbery	Kidnap	Other Sex	Other Person	Property	Public Policy	Weapons	Drugs	Not Coded
ADTC	619	573	3	554	0	1	7	8	0	0	35	1	1	9
	100%	93%	0%	89%	0%	0%	1%	1%	0%	0%	6%	0%	0%	1%
SUBTOTAL	17,319	8,086	2,400	1,551	1,150	2,602	190	50	143	2,078	899	540	4,915	801
	100%	47%	14%	9%	7%	15%	1%	0%	1%	12%	5%	3%	28%	5%
Mahan - Female Prison	1,146	361	147	17	84	104	8	0	1	192	49	9	480	55
	100%	32%	13%	1%	7%	9%	1%	0%	0%	17%	4%	1%	42%	5%
Total Prison Complex	18,465	8,447	2,547	1,568	1,234	2,706	198	50	144	2,270	948	549	5,395	856
	100%	46%	14%	8%	7%	15%	1%	0%	1%	12%	5%	3%	29%	5%

ADTC



Virtually all offenders at ADTC were committed for violent offenses

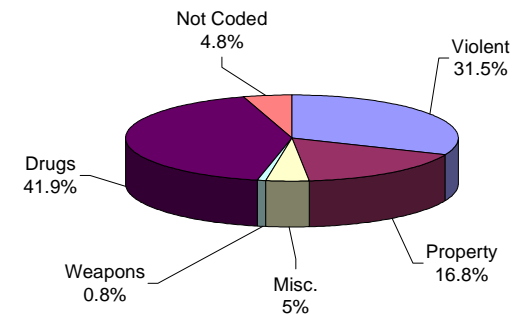
PRISON MALES



Forty-five percent (45%) of male offenders in the prison complex were convicted of a violent offense (ADTC excluded).

Twenty-nine percent (29%) of all male prison complex offenders were convicted of drug offenses.

FEMALE FACILITIES



Drug offenses are the most frequent commitment offense at Edna Mahan (42%).

Only 32% of female residents were committed for violent offenses compared with 45% for male prison complex residents.

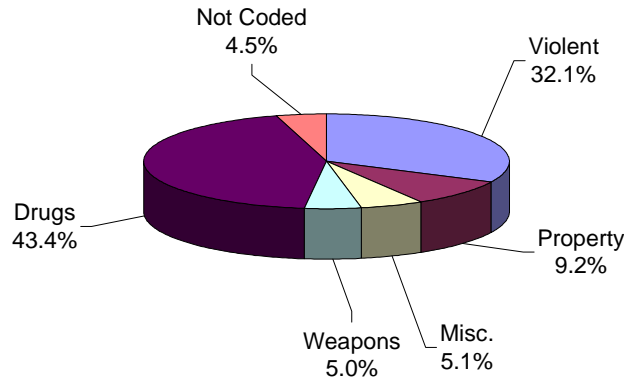
Youth Complex Offenders on January 13, 2003, By Base Offense

Institution	Total	Violent Offenses	Homicide	Sexual Assault	Assault	Robbery	Kidnap	Other Sex	Other Person	Property	Misc.	Weapons	Drugs	Not Coded
Garden State	1,708	710	143	107	120	318	4	6	12	168	97	70	588	75
	100%	42%	8%	6%	7%	19%	0%	0%	1%	10%	6%	4%	34%	4%
Mountainview Main	1,099	205	9	4	67	120	1	0	4	118	69	64	593	50
	100%	19%	1%	0%	6%	11%	0%	0%	0%	11%	6%	6%	54%	5%
Mountainview Stokes	107	10	0	0	5	3	0	0	2	21	4	5	60	7
	100%	9%	0%	0%	5%	3%	0%	0%	2%	20%	4%	5%	56%	7%
Mountainview Total	1,206	215	9	4	72	123	1	0	6	139	73	69	653	57
	100%	18%	1%	0%	6%	10%	0%	0%	0%	12%	6%	6%	54%	5%
Wagner Main	1,059	368	50	13	91	201	6	1	6	64	59	63	459	46
	100%	35%	5%	1%	9%	19%	1%	0%	1%	6%	6%	6%	43%	4%
Wagner Ad Seg	236	94	6	1	21	62	0	2	2	19	9	13	90	11
	100%	40%	3%	0%	9%	26%	0%	1%	1%	8%	4%	6%	38%	5%
Wagner Adult Boot Camp	115	3	0	0	2	0	0	0	1	8	7	3	88	6
	100%	3%	0%	0%	2%	0%	0%	0%	1%	7%	6%	3%	77%	5%
Wagner Total	1,410	465	56	14	114	263	6	3	9	91	75	79	637	63
	100%	33%	4%	1%	8%	19%	0%	0%	1%	6%	5%	6%	45%	4%
Total Youth	4,324	1,390	208	125	306	704	11	9	27	398	245	218	1,878	195
	100%	32%	5%	3%	7%	16%	0%	0%	1%	9%	6%	5%	43%	5%

Offenders In Other Facilities on January 13, 2003, By Base Offense

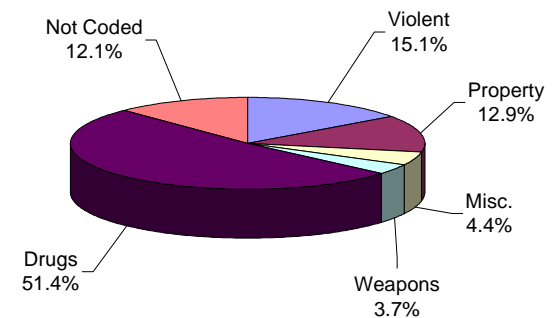
Institution	Total	Violent Offenses	Homicide	Sexual Assault	Assault	Robbery	Kidnap	Other Sex	Other Person	Property	Misc.	Weapons	Drugs	Not Coded
Central Medical	18	8	3	1	1	0	1	0	2	3	0	0	4	3
	100%	44%	17%	6%	6%	0%	6%	0%	11%	17%	0%	0%	22%	17%
County Jail	783	68	5	3	24	31	1	0	4	85	31	15	252	332
	100%	9%	1%	0%	3%	4%	0%	0%	1%	11%	4%	2%	32%	42%
EM/HC	85	2	0	0	0	2	0	0	0	7	2	0	69	5
	100%	2%	0%	0%	0%	2%	0%	0%	0%	8%	2%	0%	81%	6%
Halfway House	2,717	468	72	0	121	255	4	0	16	368	140	119	1,525	97
	100%	17%	3%	0%	4%	9%	0%	0%	1%	14%	5%	4%	56%	4%
Total Other Facilities	3,603	546	80	4	146	288	6	0	22	463	173	134	1,850	437
	100%	15%	2%	0%	4%	8%	0%	0%	1%	13%	5%	4%	51%	12%

YOUTH COMPLEX



Forty-three percent (43%) of offenders housed in the youth complex were incarcerated for drug offenses.

OFFENDERS IN OTHER FACILITIES



Offenders housed in county jails and halfway houses are less serious offenders than those found in the prison complex facilities (i.e. 15% violent offenses vs. 45% violent offenses in prison complex).

**OFFENDERS IN NEW JERSEY CORRECTIONAL INSTITUTIONS
ON JANUARY 13, 2003, BY TOTAL TERM AT ADMISSION**

Total term at admission is the total maximum term imposed for each offender at the time of commitment from the community or from parole. This includes the aggregate term for those admitted with multiple sentences. Additional sentences received following initial admission are not reflected or included in the data.

OFFENDERS IN NEW JERSEY CORRECTIONAL INSTITUTIONS ON JANUARY 13, 2003, BY TOTAL TERM AT ADMISSION

Total Term	Total		Prison Males		Youth Complex		ADTC		Edna Mahan		Other Facilities	
	#	%	#	%	#	%	#	%	#	%	#	%
TOTAL OFFENDERS	26,387	100%	16,700	100%	4,324	100%	619	100%	1,146	100%	3,598	100%
1-2 Years	418	2%	232	1%	88	2%	2	0%	27	2%	69	2%
3 Years	3,708	14%	1,798	11%	1,020	24%	13	2%	294	26%	583	16%
4 Years	3,590	14%	2,045	12%	726	17%	22	4%	224	20%	573	16%
5 Years	4,681	18%	2,709	16%	878	20%	47	8%	192	17%	855	24%
6 Years	1,125	4%	623	4%	247	6%	26	4%	32	3%	197	5%
7 Years	2,069	8%	1,223	7%	417	10%	60	10%	91	8%	278	8%
8-9 Years	1,519	6%	1,030	6%	196	5%	36	6%	41	4%	216	6%
10 Years	1,839	7%	1,271	8%	242	6%	101	16%	50	4%	175	5%
11-14 Years	889	3%	593	4%	131	3%	55	9%	30	3%	80	2%
15 Years	910	3%	698	4%	74	2%	55	9%	23	2%	60	2%
16-20 Years	1,417	5%	1,092	7%	111	3%	84	14%	36	3%	94	3%
20+ Years	2,249	9%	1,934	12%	98	2%	109	18%	64	6%	44	1%
Life	1,089	4%	1,041	6%	12	0%	3	0%	21	2%	12	0%
Capital	16	0%	16	0%	0	0%	0	0%	0	0%	0	0%
Not Coded	868	3%	395	2%	84	2%	6	1%	21	2%	362	10%

Among New Jersey Adult Correctional Offenders:

- The median term for adult offenders is 6 years.
- Forty-eight percent (48%) are serving terms of 1 -5 years.
- Eighteen percent (18%) are serving terms of 6-9 years.
- Thirty-one percent (31%) are serving terms of 10 years or more, which includes 1,105 offenders serving life or capital sentences.

Prison Complex Offenders on January 13, 2003, By Total Term At Admission

Institution	Total	1-2 Years	3 Years	4 Years	5 Years	6 Years	7 Years	8-9 Years	10 Years	11-14 Years	15 Years	16-20 Years	20+ Years	Life	Capital	Not Coded
Bayside Main	1,455 100%	26 2%	204 14%	212 15%	327 22%	74 5%	118 8%	98 7%	113 8%	50 3%	45 3%	68 5%	71 5%	15 1%	0 0%	34 2%
Bayside Farm	705 100%	11 2%	81 11%	92 13%	123 17%	43 6%	53 8%	44 6%	59 8%	21 3%	23 3%	53 8%	63 9%	16 2%	0 0%	23 3%
Bayside Ancora	326 100%	8 2%	66 20%	80 25%	79 24%	7 2%	31 10%	23 7%	15 5%	5 2%	2 1%	4 1%	1 0%	0 0%	0 0%	5 2%
Bayside Total	2,486 100%	45 2%	351 14%	384 15%	529 21%	124 5%	202 8%	165 7%	187 8%	76 3%	70 3%	125 5%	135 5%	31 1%	0 0%	62 2%
CRAF Jones Farm	195 100%	10 5%	79 41%	57 29%	32 16%	8 4%	5 3%	1 1%	0 0%	0 0%	0 0%	0 0%	0 0%	0 0%	0 0%	3 2%
CRAF Reception	772 100%	23 3%	142 18%	129 17%	135 17%	35 5%	44 6%	35 5%	27 3%	11 1%	13 2%	20 3%	13 2%	1 0%	0 0%	144 19%
CRAF Total	967 100%	33 3%	221 23%	186 19%	167 17%	43 4%	49 5%	36 4%	27 3%	11 1%	13 1%	20 2%	13 1%	1 0%	0 0%	147 15%
East Jersey Main	1,410 100%	6 0%	40 3%	47 3%	104 7%	22 2%	64 5%	79 6%	103 7%	85 6%	104 7%	180 13%	404 29%	159 11%	0 0%	13 1%
East Jersey Camp	127 100%	2 2%	15 12%	22 17%	19 15%	5 4%	8 6%	12 9%	14 11%	4 3%	3 2%	11 9%	9 7%	0 0%	0 0%	3 2%
East Jersey Marlboro	128 100%	5 4%	31 24%	25 20%	29 23%	4 3%	9 7%	5 4%	9 7%	3 2%	3 2%	1 1%	2 2%	0 0%	0 0%	2 2%
East Jersey Ad Seg	439 100%	10 2%	53 12%	60 14%	62 14%	18 4%	34 8%	17 4%	42 10%	19 4%	23 5%	37 8%	45 10%	12 3%	0 0%	7 2%
East Jersey Total	2,104 100%	23 1%	139 7%	154 7%	214 10%	49 2%	115 5%	113 5%	168 8%	111 5%	133 6%	229 11%	460 22%	171 8%	0 0%	25 1%

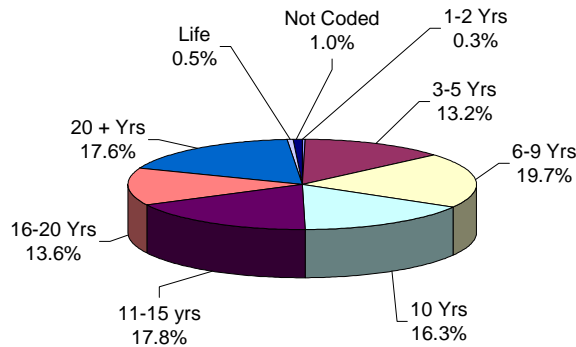
Prison Complex Offenders on January 13, 2003, By Total Term At Admission

Institution	Total	1-2 Years	3 Years	4 Years	5 Years	6 Years	7 Years	8-9 Years	10 Years	11-14 Years	15 Years	16-20 Years	20+ Years	Life	Capital	Not Coded
Midstate	623 100%	16 3%	115 18%	141 23%	157 25%	28 4%	66 11%	39 6%	22 4%	6 1%	5 1%	7 1%	2 0%	0 0%	0 0%	19 3%
NJ State Prison Ad Seg Female	28 100%	0 0%	12 43%	4 14%	5 18%	1 4%	1 4%	1 4%	1 4%	0 0%	1 4%	1 4%	1 4%	0 0%	0 0%	0 0%
NJ State Prison Main	1,876 100%	8 0%	51 3%	58 3%	93 5%	14 1%	40 2%	34 2%	52 3%	24 1%	31 2%	60 3%	643 34%	732 39%	16 1%	20 1%
NJ State Prison Total	1,904 100%	8 0%	63 3%	62 3%	98 5%	15 1%	41 2%	35 2%	53 3%	24 1%	32 2%	61 3%	644 34%	732 38%	16 1%	20 1%
Northern Main	2,009 100%	18 1%	169 8%	240 12%	351 17%	87 4%	213 11%	130 6%	175 9%	88 4%	106 5%	202 10%	185 9%	23 1%	0 0%	22 1%
Northern Ad Seg Male	447 100%	5 1%	48 11%	65 15%	66 15%	6 1%	31 7%	37 8%	40 9%	13 3%	21 5%	42 9%	55 12%	18 4%	0 0%	0 0%
Northern Total	2,456 100%	23 1%	217 9%	305 12%	417 17%	93 4%	244 10%	167 7%	215 9%	101 4%	127 5%	244 10%	240 10%	41 2%	0 0%	22 1%
Riverfront	1,153 100%	18 2%	91 8%	110 10%	206 18%	52 5%	103 9%	101 9%	128 11%	72 6%	57 5%	79 7%	106 9%	15 1%	0 0%	15 1%
Southern	1,690 100%	30 2%	237 14%	279 17%	345 20%	78 5%	147 9%	119 7%	146 9%	44 3%	67 4%	89 5%	71 4%	8 0%	0 0%	30 2%
South Woods	3,317 100%	36 1%	364 11%	424 13%	576 17%	141 4%	256 8%	255 8%	325 10%	148 4%	194 6%	238 7%	263 8%	42 1%	0 0%	55 2%
SUBTOTAL PRISON MALES	16,700 100%	232 1%	1,798 11%	2,045 12%	2,709 16%	623 4%	1,223 7%	1,030 6%	1,271 8%	593 4%	698 4%	1,092 7%	1,934 12%	1,041 6%	16 0%	395 2%

Prison Complex Offenders on January 13, 2003, By Total Term At Admission

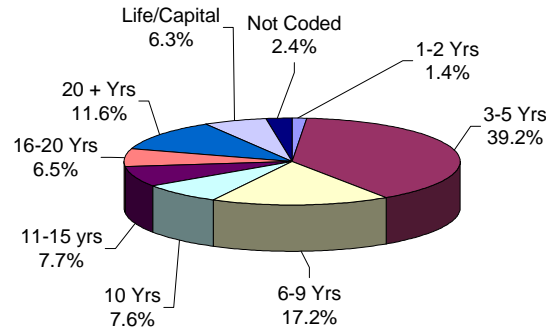
Institution	Total	1-2 Years	3 Years	4 Years	5 Years	6 Years	7 Years	8-9 Years	10 Years	11-14 Years	15 Years	16-20 Years	20+ Years	Life	Capital	Not Coded
ADTC	619 100%	2 0%	13 2%	22 4%	47 8%	26 4%	60 10%	36 6%	101 16%	55 9%	55 9%	84 14%	109 18%	3 0%	0 0%	6 1%
SUBTOTAL	17,319 100%	234 1%	1,811 10%	2,067 12%	2,756 16%	649 4%	1,283 7%	1,066 6%	1,372 8%	648 4%	753 4%	1,176 7%	2,043 12%	1,044 6%	16 0%	401 2%
Mahan - Female Prison	1,146 100%	27 2%	294 26%	224 20%	192 17%	32 3%	91 8%	41 4%	50 4%	30 3%	23 2%	36 3%	64 6%	21 2%	0 0%	21 2%
Total Prison Complex	18,465 100%	261 1%	2,105 11%	2,291 12%	2,948 16%	681 4%	1,374 7%	1,107 6%	1,422 8%	678 4%	776 4%	1,212 7%	2,107 11%	1,065 6%	16 0%	422 2%

ADTC



The median term at ADTC is 10 years.

PRISON MALES

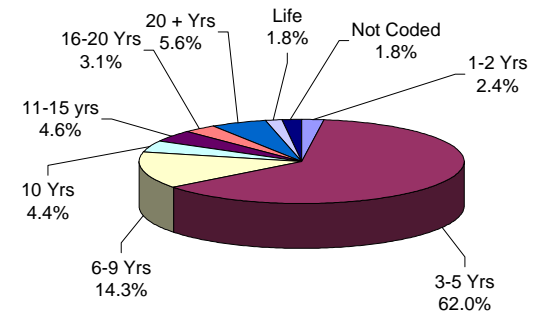


The median term for prison males is 7 years.

Twenty-five percent (25%) of all prison males are serving sentences of 16 years or more.

Seventy-eight percent (78%) of all offenders at New Jersey State Prison are serving sentences of 16 years or more, with 732 life sentences and 16 capital cases.

FEMALE FACILITIES



The median term at Edna Mahan is 5 years.

Sixty-six percent (66%) of the female offenders at Edna Mahan Correctional Facility for Women are serving sentences of 5 years or less.

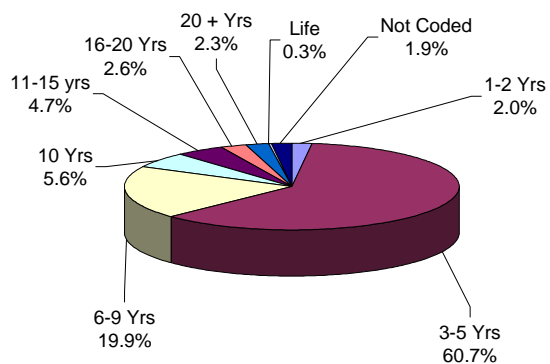
Youth Complex Offenders on January 13, 2003, By Total Term At Admission

Institution	Total	1-2 Years	3 Years	4 Years	5 Years	6 Years	7 Years	8-9 Years	10 Years	11-14 Years	15 Years	16-20 Years	20+ Years	Life	Capital	Not Coded
Garden State	1,708 100%	39 2%	302 18%	278 16%	333 19%	106 6%	171 10%	81 5%	111 6%	58 3%	42 2%	71 4%	84 5%	12 1%	0 0%	20 1%
Mountainview Main	1,099 100%	21 2%	363 33%	210 19%	246 22%	54 5%	95 9%	39 4%	27 2%	9 1%	3 0%	2 0%	2 0%	0 0%	0 0%	28 3%
Mountainview Stokes	107 100%	1 1%	42 39%	23 21%	26 24%	3 3%	8 7%	0 0%	1 1%	0 0%	0 0%	0 0%	0 0%	0 0%	0 0%	3 3%
Mountainview Total	1206 100%	22 2%	405 34%	233 19%	272 23%	57 5%	103 9%	39 3%	28 2%	9 1%	3 0%	2 2%	2 2%	0 0%	0 0%	31 3%
Wagner Main	1,059 100%	19 2%	187 18%	149 14%	226 21%	65 6%	114 11%	63 6%	89 8%	55 5%	22 2%	32 3%	11 1%	0 0%	0 0%	27 3%
Wagner Ad Seg	236 100%	8 3%	61 26%	35 15%	34 14%	15 6%	29 12%	13 6%	14 6%	9 4%	7 3%	6 3%	1 0%	0 0%	0 0%	4 2%
Wagner Adult Boot Camp	115 100%	0 0%	65 57%	31 27%	13 11%	4 3%	0 0%	0 0%	0 0%	0 0%	0 0%	0 0%	0 0%	0 0%	0 0%	2 2%
Wagner Total	1,410 100%	27 2%	313 22%	215 15%	273 19%	84 6%	143 10%	76 5%	103 7%	64 5%	29 2%	38 3%	12 1%	0 0%	0 0%	33 2%
Total Youth	4,324 100%	88 2%	1,020 24%	726 17%	878 20%	247 6%	417 10%	196 5%	242 6%	131 3%	74 2%	111 3%	98 2%	12 0%	0 0%	84 2%

Offenders In Other Facilities on January 13, 2003, By Total Term At Admission

Institution	Total	1-2 Years	3 Years	4 Years	5 Years	6 Years	7 Years	8-9 Years	10 Years	11-14 Years	15 Years	16-20 Years	20+ Years	Life	Capital	Not Coded
Central Medical	13 100%	1 8%	1 8%	1 8%	2 15%	1 8%	2 15%	0 0%	0 0%	0 0%	1 8%	0 0%	3 23%	1 8%	0 0%	0 0%
County Jail	783 100%	32 4%	131 17%	97 12%	89 11%	14 2%	31 4%	16 2%	18 2%	7 1%	7 1%	13 2%	1 0%	3 0%	0 0%	324 41%
EM/HC	85 100%	3 4%	22 26%	11 13%	20 24%	5 6%	14 16%	4 5%	3 4%	1 1%	0 0%	0 0%	0 0%	0 0%	0 0%	2 2%
Halfway House	2,717 100%	33 1%	429 16%	464 17%	744 27%	177 7%	231 9%	196 7%	154 6%	72 3%	52 2%	81 3%	40 1%	8 0%	0 0%	36 1%
Total Other Facilities	3,598 100%	69 2%	583 16%	573 16%	855 24%	197 5%	278 8%	216 6%	175 5%	80 2%	60 2%	94 3%	44 1%	12 0%	0 0%	362 10%

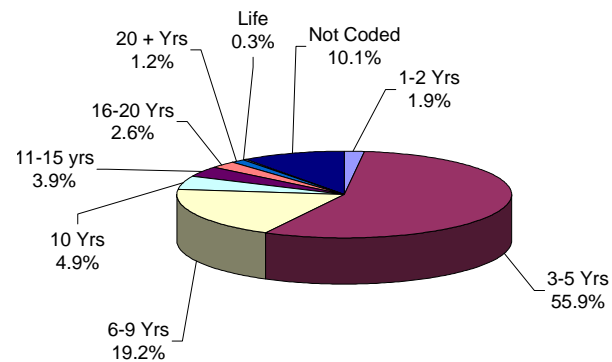
YOUTH COMPLEX



The median youth complex term is 5 years.

Twenty-three (12) youth complex offenders are serving life sentences.

OFFENDERS IN OTHER FACILITIES



The median term for offenders housed in 'other facilities' is 5 years.

Sixty-four percent (64%) of offenders housed in 'other facilities' are serving terms of 5 years or less.

**OFFENDERS IN NEW JERSEY CORRECTIONAL INSTITUTIONS
ON JANUARY 13, 2003, BY MANDATORY MINIMUM TERM**

In New Jersey, since 1979, the courts have utilized mandatory minimum sentences. This means that an offender must serve the entire minimum sentence before being eligible for parole consideration. Mandatory minimum terms are not reduced by earned credits (commutation, minimum security or work).

OFFENDERS IN CORRECTIONAL INSTITUTIONS ON JANUARY 13, 2003, BY MANDATORY MINIMUM TERM

Mandatory Minimum Term	Total		Prison Males		Youth Complex		ADTC		Edna Mahan		Other Facilities	
	#	%	#	%	#	%	#	%	#	%	#	%
TOTAL OFFENDERS	16,034	100%	10,582	100%	2,654	100%	271	100%	529	100%	1,998	100%
<18 Months	1,496	9%	573	5%	574	22%	0	0%	81	15%	268	13%
18 Months	911	6%	424	4%	274	10%	0	0%	40	8%	173	9%
2 Years	2,376	16%	1,402	13%	375	14%	3	1%	80	15%	516	26%
3 Years	2,900	19%	1,750	17%	467	18%	9	3%	96	18%	578	29%
4 Years	1,271	8%	825	8%	228	9%	13	5%	48	9%	157	8%
5 Years	1,579	10%	1,123	11%	232	9%	80	30%	30	6%	114	6%
6-9 Years	1,780	12%	1,262	12%	269	10%	59	22%	58	11%	132	7%
10 Years	655	4%	499	5%	59	2%	46	17%	16	3%	35	2%
11-14 Years	632	3%	514	5%	72	3%	13	5%	22	4%	11	1%
15 Years	419	3%	345	3%	30	1%	28	10%	11	2%	5	0%
16-19 Years	288	1%	246	2%	28	1%	5	2%	7	1%	2	0%
20-24 Years	276	2%	257	2%	9	0%	6	2%	2	0%	2	0%
25-29 Years	255	1%	241	2%	5	0%	5	2%	4	1%	0	0%
30 Years	707	4%	650	6%	25	1%	3	1%	27	5%	2	0%
30+ Years	489	3%	471	4%	7	0%	1	0%	7	1%	3	0%

- Sixty percent (60%) of all adult offenders have mandatory minimum terms (16,034 out of 26,387).
- The median mandatory minimum term is 4 years.
- Fifteen percent (15%) of those with mandatory minimum terms have mandatory minimum terms of 15 years or more.

Prison Complex Offenders on January 13, 2003, By Mandatory Minimum Term

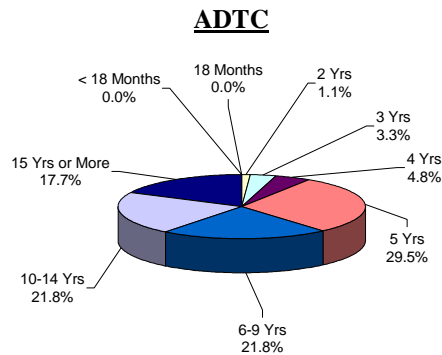
Institution	Total	< 18 Months	18 Months	2 Years	3 Years	4 Years	5 Years	6-9 Years	10 Years	11-14 Years	15 Years	16-19 Years	20-24 Years	25-29 Years	30 Years	30+ Years
Bayside Main	858 100%	64 7%	46 5%	162 19%	224 26%	86 10%	93 11%	99 12%	27 3%	18 2%	19 2%	7 1%	5 1%	3 0%	4 0%	1 0%
Bayside Farm	422 100%	15 4%	18 4%	79 19%	109 26%	36 9%	44 10%	56 13%	26 6%	16 4%	9 2%	5 1%	2 0%	5 1%	1 0%	1 0%
Bayside Ancora	159 100%	19 12%	10 6%	37 23%	64 40%	13 8%	10 6%	6 4%	0 0%	0 0%	0 0%	0 0%	0 0%	0 0%	0 0%	0 0%
Bayside Total	1,439 100%	98 7%	74 5%	278 19%	397 28%	135 9%	147 10%	161 11%	53 4%	34 2%	28 2%	12 1%	7 0%	8 1%	5 0%	2 0%
CRAF Jones Farm	83 100%	31 37%	22 27%	23 28%	6 7%	1 1%	0 0%	0 0%	0 0%	0 0%	0 0%	0 0%	0 0%	0 0%	0 0%	0 0%
CRAF Reception	310 100%	48 15%	35 11%	45 15%	80 26%	22 7%	31 10%	28 9%	4 1%	6 2%	3 1%	1 0%	2 1%	2 1%	1 0%	2 1%
CRAF Total	393 100%	79 20%	57 15%	68 17%	86 22%	23 6%	31 8%	28 7%	4 1%	6 2%	3 1%	1 0%	2 1%	2 1%	1 0%	2 1%
East Jersey Main	1,009 100%	10 0%	13 1%	49 3%	71 5%	69 4%	123 9%	122 12%	113 11%	115 11%	93 9%	44 4%	58 6%	62 6%	126 12%	42 4%
East Jersey Camp	74 100%	5 7%	4 5%	13 18%	13 18%	8 11%	11 15%	10 14%	5 7%	2 3%	1 1%	1 1%	1 1%	0 0%	0 0%	0 0%
East Jersey Marlboro	68 100%	17 25%	6 9%	17 25%	10 15%	5 7%	6 9%	6 9%	1 1%	0 0%	0 0%	0 0%	0 0%	0 0%	0 0%	0 0%
East Jersey Ad Seg	277 100%	25 9%	10 4%	31 11%	37 13%	19 7%	33 12%	40 14%	23 8%	13 5%	10 4%	7 3%	10 4%	3 1%	11 4%	5 2%
East Jersey Total	1,529 100%	57 4%	33 2%	110 7%	131 9%	101 7%	173 11%	178 12%	142 9%	130 9%	104 7%	52 3%	69 5%	65 4%	137 9%	47 3%

Prison Complex Offenders on January 13, 2003, By Mandatory Minimum Term

Institution	Total	< 18 Months	18 Months	2 Years	3 Years	4 Years	5 Years	6-9 Years	10 Years	11-14 Years	15 Years	16-19 Years	20-24 Years	25-29 Years	30 Years	30+ Years
Midstate	205 100%	26 13%	20 10%	55 27%	60 29%	14 7%	15 7%	15 7%	0 0%	0 0%	0 0%	0 0%	0 0%	0 0%	0 0%	0 0%
NJ State Prison Ad Seg Female	12 100%	2 0%	0 0%	2 0%	2 0%	1 0%	2 0%	1 0%	1 0%	0 0%	0 0%	0 0%	1 0%	0 0%	0 0%	0 0%
NJ State Prison Main	1,552 100%	19 1%	11 1%	39 3%	48 3%	25 2%	41 3%	57 4%	44 3%	45 3%	61 4%	65 4%	116 8%	139 9%	441 30%	401 27%
NJ State Prison Total	1,564 100%	21 1%	11 1%	41 3%	50 3%	26 2%	43 3%	58 4%	45 3%	45 3%	61 4%	65 4%	117 7%	139 9%	441 28%	401 26%
Northern Main	1,361 100%	73 5%	49 4%	187 14%	260 19%	114 8%	173 13%	198 15%	81 6%	91 7%	34 2%	38 3%	21 2%	10 1%	21 2%	11 1%
Northern Ad Seg Male	278 100%	13 5%	15 5%	40 14%	40 14%	27 10%	27 10%	45 16%	25 9%	17 6%	10 4%	4 1%	3 1%	0 0%	4 1%	8 3%
Northern Total	1,639 100%	86 5%	64 4%	227 14%	300 18%	141 9%	200 12%	243 15%	106 6%	108 7%	44 3%	42 3%	24 1%	10 1%	25 2%	19 1%
Riverfront	793 100%	29 4%	21 3%	105 13%	168 21%	93 12%	116 15%	119 15%	51 6%	36 5%	22 3%	8 1%	9 1%	6 1%	6 1%	4 1%
Southern	989 100%	82 8%	51 5%	199 20%	230 23%	109 11%	133 13%	112 11%	34 3%	15 2%	14 1%	4 0%	3 0%	1 0%	1 0%	1 0%
South Woods	2,014 100%	95 5%	93 5%	319 16%	328 16%	183 9%	265 13%	321 16%	92 5%	117 6%	67 3%	44 2%	36 2%	17 1%	25 1%	12 1%
SUBTOTAL PRISON MALES	10,565 100%	573 5%	424 4%	1,402 13%	1,750 17%	825 8%	1,123 11%	1,235 12%	527 5%	491 5%	343 3%	228 2%	267 3%	248 2%	641 6%	488 5%

Prison Complex Offenders on January 13, 2003, By Mandatory Minimum Term

Institution	Total	< 18 Months	18 Months	2 Years	3 Years	4 Years	5 Years	6-9 Years	10 Years	11-14 Years	15 Years	16-19 Years	20-24 Years	25-29 Years	30 Years	30+ Years
ADTC	271	0	0	3	9	13	80	59	46	13	28	5	6	5	3	1
	100%	0%	0%	1%	3%	5%	30%	22%	17%	5%	10%	2%	2%	2%	1%	0%
Subtotal	10,836	573	424	1,405	1,759	838	1,203	1,294	573	504	371	233	273	253	644	489
	100%	5%	4%	13%	16%	8%	11%	12%	5%	5%	3%	2%	3%	2%	6%	5%
Mahan - Female Prison	563	81	40	80	96	48	55	58	18	22	15	7	5	4	27	7
	100%	14%	7%	14%	17%	9%	10%	10%	3%	4%	3%	1%	1%	1%	5%	1%
Total Prison Complex	11,399	654	464	1,485	1,855	886	1,258	1,352	591	526	386	240	278	257	671	496
	100%	6%	4%	13%	16%	8%	11%	12%	5%	5%	3%	2%	2%	2%	6%	4%

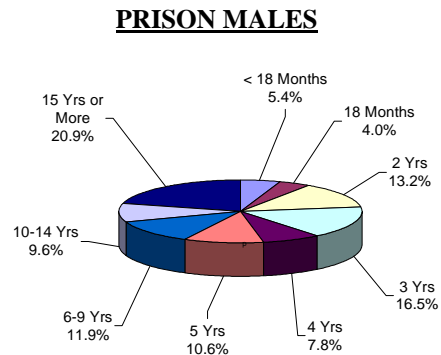


The median mandatory minimum term at ADTC is 8 years.

Forty-four percent (44%) of the ADTC population have mandatory minimum sentences (271 of 619).

Of those with mandatory minimums, 39% have minimum terms of 5 years or less.

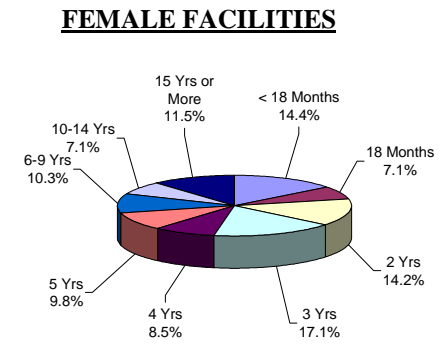
Thirty-nine percent (39%) have mandatory minimum terms of 10 years or longer.



Of the 16,700 prison complex males, 63% (10,565) have mandatory minimum terms.

The median mandatory minimum term for prison complex males is 4 years (ADTC excluded).

Eighty-two percent (82%) of New Jersey State Prison inmates have mandatory minimum terms and 78% percent of those have minimum terms of 15 years or more.



The median mandatory minimum term at Edna Mahan is 3 years 4 months.

At Edna Mahan, 49% of the females housed have minimum terms (563 of 1146).

Seventy-one percent (71%) of the females with mandatory minimum terms have terms of 5 years or less.

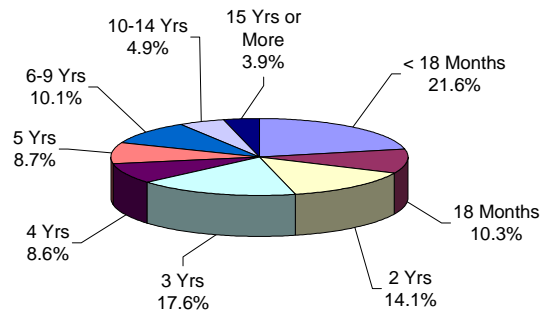
Youth Complex Offenders on January 13, 2003, By Mandatory Minimum Term

Institution	Total	< 18 Months	18 Months	2 Years	3 Years	4 Years	5 Years	6-9 Years	10 Years	11-14 Years	15 Years	16-19 Years	20-24 Years	25-29 Years	30 Years	30+ Years
Garden State	1,029	140	92	145	166	89	98	125	34	43	25	27	9	5	24	7
	100%	14%	9%	14%	16%	9%	10%	12%	3%	4%	2%	3%	1%	0%	2%	1%
Mountainview Main	633	216	75	107	127	64	21	22	1	0	0	0	0	0	0	0
	100%	34%	12%	17%	20%	10%	3%	3%	0%	0%	0%	0%	0%	0%	0%	0%
Mountainview Stokes	54	21	8	10	15	0	0	0	0	0	0	0	0	0	0	0
	100%	39%	15%	19%	28%	0%	0%	0%	0%	0%	0%	0%	0%	0%	0%	0%
Mountainview Total	687	237	83	117	142	64	21	22	1	0	0	0	0	0	0	0
	100%	34%	12%	17%	21%	9%	3%	3%	0%	0%	0%	0%	0%	0%	0%	0%
Wagner Main	712	119	59	97	138	63	85	101	21	23	4	1	0	0	1	0
	100%	17%	8%	14%	19%	9%	12%	14%	3%	3%	1%	0%	0%	0%	0%	0%
Wagner Ad Seg	155	38	20	9	21	12	28	17	3	6	1	0	0	0	0	0
	100%	25%	13%	6%	14%	8%	18%	11%	2%	4%	1%	0%	0%	0%	0%	0%
Wagner Adult Boot Camp	71	40	20	7	0	0	0	4	0	0	0	0	0	0	0	0
	100%	56%	28%	10%	0%	0%	0%	6%	0%	0%	0%	0%	0%	0%	0%	0%
Wagner Total	938	197	99	113	159	75	113	122	24	29	5	1	0	0	1	0
	100%	21%	11%	12%	17%	8%	12%	13%	3%	3%	1%	0%	0%	0%	0%	0%
Total Youth	2,654	574	274	375	467	228	232	269	59	72	30	28	9	5	25	7
	100%	22%	10%	14%	18%	9%	9%	10%	2%	3%	1%	1%	0%	0%	1%	0%

Offenders In Other Facilities on January 13, 2003, By Mandatory Minimum Term

Institution	Total	< 18 Months	18 Months	2 Years	3 Years	4 Years	5 Years	6-9 Years	10 Years	11-14 Years	15 Years	16-19 Years	20-24 Years	25-29 Years	30 Years	30+ Years
Central Medical	8 100%	1 13%	1 13%	1 13%	1 13%	0 0%	0 0%	0 0%	0 0%	0 0%	1 13%	0 0%	0 0%	0 0%	2 25%	1 13%
County Jail	169 100%	44 26%	17 10%	41 24%	28 17%	10 6%	9 5%	15 9%	1 1%	2 1%	1 1%	0 0%	0 0%	0 0%	0 0%	1 1%
EM/HC	57 100%	21 37%	5 9%	13 23%	15 26%	1 2%	0 0%	2 4%	0 0%	0 0%	0 0%	0 0%	0 0%	0 0%	0 0%	0 0%
Halfway House	1,764 100%	202 11%	150 9%	461 26%	534 30%	146 8%	105 6%	115 7%	34 2%	9 1%	3 0%	2 0%	2 0%	0 0%	0 0%	1 0%
Total Other Facilities	1,998 100%	268 13%	173 9%	516 26%	578 29%	157 8%	114 6%	132 7%	35 2%	11 1%	5 0%	2 0%	2 0%	0 0%	2 0%	3 0%

YOUTH COMPLEX

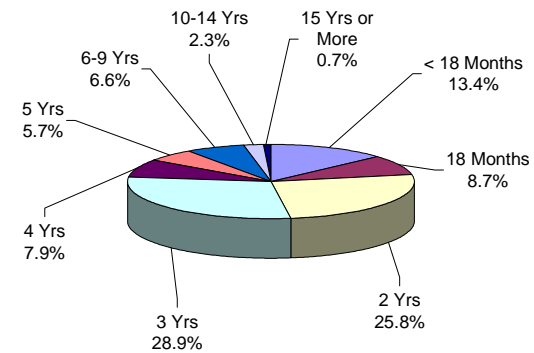


The median mandatory minimum term for youth complex offenders is 3 years.

Among youth complex offenders, 61% have mandatory minimum terms (2654 of 4324).

Of these, 81% have mandatory minimum terms of 5 years or less.

OFFENDERS IN OTHER FACILITIES



The median mandatory minimum term for inmates in 'other facilities' is 2 years 9 months.

Fifty-five percent (55%) of the offenders in 'other facilities' have mandatory minimum terms (1998 of 3598).

Of these, 90% have mandatory minimum terms of 5 years or less.

**OFFENDERS IN NEW JERSEY CORRECTIONAL INSTITUTIONS
ON JANUARY 13, 2003, BY AGE**

The age of the offender is the chronological age as of January 1, 2003.

OFFENDERS IN CORRECTIONAL INSTITUTIONS ON JANUARY 13, 2003, BY AGE

Age	Total		Prison Males		Youth Complex		ADTC		Edna Mahan		Other Facilities	
	#	%	#	%	#	%	#	%	#	%	#	%
TOTAL OFFENDERS	26,387	100%	16,700	100%	4,324	100%	619	100%	1,146	100%	3,598	100%
< 17 Years	6	0%	0	0%	2	0%	0	0%	0	0%	4	0%
17 Years	25	0%	0	0%	18	0%	0	0%	1	0%	6	0%
18-20 Years	950	4%	122	1%	690	16%	2	0%	22	2%	114	3%
21-22 Years	2,010	8%	460	3%	1,223	28%	9	1%	52	5%	266	7%
23-24 Years	2,398	9%	823	5%	1,191	28%	14	2%	66	6%	304	8%
25-27 Years	3,205	12%	1,676	10%	933	22%	19	3%	96	8%	481	13%
28-30 Years	2,906	11%	2,121	13%	189	4%	18	3%	100	9%	478	13%
31-33 Years	3,035	12%	2,332	14%	44	1%	46	7%	156	14%	457	13%
34-36 Years	2,703	10%	2,063	12%	16	0%	45	7%	172	15%	407	11%
37-39 Years	2,511	10%	1,946	12%	8	0%	76	12%	154	13%	327	9%
40-44 Years	3,165	12%	2,442	15%	5	0%	111	18%	180	16%	427	12%
45-49 Years	1,709	6%	1,361	8%	0	0%	76	12%	89	8%	183	5%
50-54 Years	912	3%	715	4%	1	0%	76	12%	35	3%	85	2%
55-59 Years	456	2%	348	2%	1	0%	57	9%	15	1%	35	1%
60-64 Years	219	1%	167	1%	1	0%	31	5%	8	1%	12	0%
65+ Years	172	1%	121	1%	1	0%	39	6%	0	0%	11	0%
Unspec	5	0%	3	0%	1	0%	0	0%	0	0%	1	0%

- The median age for adult residents is 32 years.
- Four percent (4%) of all adult offenders are 20 years of age or younger.
- Forty percent (40%) of all adult offenders are between the ages of 21-30.
- Thirty percent (31%) of all adult offenders are 31 to 39 years of age.
- Twenty-five percent (25%) of all adult offenders are 40 years of age and older.

Prison Complex Offenders on January 13, 2003, By Age

Institution	Total	< 17 Years	17 Years	18-20 Years	21-22 Years	23-24 Years	25-27 Years	28-30 Years	31-33 Years	34-36 Years	37-39 Years	40-44 Years	45-49 Years	50-54 Years	55-59 Years	60-64 Years	65+ Years	Unspec
Bayside Main	1,455 100%	0 0%	0 0%	3 0%	46 3%	95 7%	189 13%	201 14%	247 17%	171 12%	157 11%	182 13%	88 6%	43 3%	15 1%	13 1%	4 0%	1 0%
Bayside Farm	705 100%	0 0%	0 0%	2 0%	0 0%	15 2%	57 8%	114 16%	106 15%	87 12%	90 13%	128 18%	64 9%	23 3%	11 2%	6 1%	2 0%	0 0%
Bayside Ancora	326 100%	0 0%	0 0%	0 0%	0 0%	6 2%	34 10%	48 15%	64 20%	52 16%	51 16%	39 12%	21 6%	4 1%	6 2%	1 0%	0 0%	0 0%
Bayside Total	2,486 100%	0 0%	0 0%	5 0%	46 2%	116 5%	280 11%	363 15%	417 17%	310 12%	298 12%	349 14%	173 7%	70 3%	32 1%	20 1%	6 0%	1 0%
CRAF Jones Farm	195 100%	0 0%	0 0%	0 0%	0 0%	0 0%	20 10%	37 19%	34 17%	19 10%	27 14%	44 23%	7 4%	5 3%	2 1%	0 0%	0 0%	0 0%
CRAF Reception	771 100%	0 0%	0 0%	40 5%	57 7%	62 8%	78 10%	93 12%	94 12%	89 12%	99 13%	93 12%	30 4%	22 3%	12 2%	1 0%	1 0%	1 0%
CRAF Total	966 100%	0 0%	0 0%	40 4%	57 6%	62 6%	98 10%	130 13%	128 13%	108 11%	126 13%	137 14%	37 4%	27 3%	14 1%	1 0%	1 0%	1 0%
East Jersey Main	1,410 100%	0 0%	0 0%	2 0%	11 1%	30 2%	111 8%	155 11%	187 13%	172 12%	180 13%	234 17%	153 11%	81 6%	55 4%	29 2%	10 1%	0 0%
East Jersey Camp	127 100%	0 0%	0 0%	0 0%	0 0%	2 2%	6 5%	19 15%	26 20%	14 11%	18 14%	23 18%	12 9%	7 6%	0 0%	0 0%	0 0%	0 0%
East Jersey Marlboro	128 100%	0 0%	0 0%	0 0%	1 1%	0 0%	5 4%	14 11%	23 18%	25 20%	24 19%	19 15%	12 9%	4 3%	0 0%	1 1%	0 0%	0 0%
East Jersey Ad Seg	439 100%	0 0%	0 0%	15 3%	57 13%	63 14%	65 15%	57 13%	40 9%	30 7%	34 8%	35 8%	21 5%	14 3%	5 1%	1 0%	2 0%	0 0%
East Jersey Total	2,104 100%	0 0%	0 0%	17 1%	69 3%	95 5%	187 9%	245 12%	276 13%	241 11%	256 12%	311 15%	198 9%	106 5%	60 3%	31 1%	12 1%	0 0%

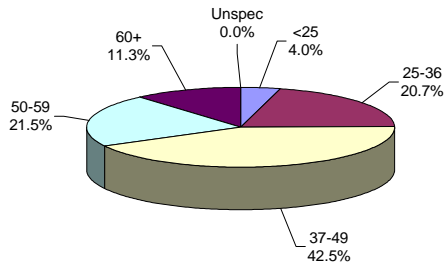
Prison Complex Offenders on January 13, 2003, By Age

Institution	Total	< 17 Years	17 Years	18-20 Years	21-22 Years	23-24 Years	25-27 Years	28-30 Years	31-33 Years	34-36 Years	37-39 Years	40-44 Years	45-49 Years	50-54 Years	55-59 Years	60-64 Years	65+ Years	Unspec
Midstate	623	0	0	0	9	12	49	60	99	70	65	104	71	46	10	13	15	0
	100%	0%	0%	0%	1%	2%	8%	10%	16%	11%	10%	17%	11%	7%	2%	2%	2%	0%
NJ State Prison Ad Seg Female	28	0	0	1	4	5	4	5	5	1	2	1	0	0	0	0	0	0
	100%	0%	0%	4%	14%	18%	14%	18%	18%	4%	7%	4%	0%	0%	0%	0%	0%	0%
NJ State Prison Main	1,876	0	0	5	48	109	171	170	201	206	206	305	182	132	75	33	33	0
	100%	0%	0%	0%	3%	6%	9%	9%	11%	11%	11%	16%	10%	7%	4%	2%	2%	0%
NJ State Prison Total	1,904	0	0	6	52	114	175	175	206	207	208	306	182	132	75	33	33	0
	100%	0%	0%	0%	3%	6%	9%	9%	11%	11%	11%	16%	10%	7%	4%	2%	2%	0%
Northern Main	2,009	0	0	25	89	137	233	308	294	245	179	269	144	47	25	8	6	0
	100%	0%	0%	1%	4%	7%	12%	15%	15%	12%	9%	13%	7%	2%	1%	0%	0%	0%
Northern Ad Seg Male	447	0	0	7	13	17	41	68	52	56	51	73	34	21	10	2	1	1
	100%	0%	0%	2%	3%	4%	9%	15%	12%	13%	11%	16%	8%	5%	2%	0%	0%	0%
Northern Total	2,456	0	0	32	102	154	274	376	346	301	230	342	178	68	35	10	7	1
	100%	0%	0%	1%	4%	6%	11%	15%	14%	12%	9%	14%	7%	3%	1%	0%	0%	0%
Riverfront	1,153	0	0	3	22	55	127	156	181	152	124	152	95	44	27	12	3	0
	100%	0%	0%	0%	2%	5%	11%	14%	16%	13%	11%	13%	8%	4%	2%	1%	0%	0%
Southern	1,690	0	0	2	18	52	171	224	243	256	238	264	136	55	22	6	3	0
	100%	0%	0%	0%	1%	3%	10%	13%	14%	15%	14%	16%	8%	3%	1%	0%	0%	0%
South Woods	3,317	0	0	17	85	163	315	392	436	418	401	477	291	167	73	41	41	0
	100%	0%	0%	1%	3%	5%	9%	12%	13%	13%	12%	14%	9%	5%	2%	1%	1%	0%
SUBTOTAL PRISON MALES	16,700	0	0	122	460	823	1,676	2,121	2,332	2,063	1,946	2,442	1,361	715	348	167	121	3
	100%	0%	0%	1%	3%	5%	10%	13%	14%	12%	12%	15%	8%	4%	2%	1%	1%	0%

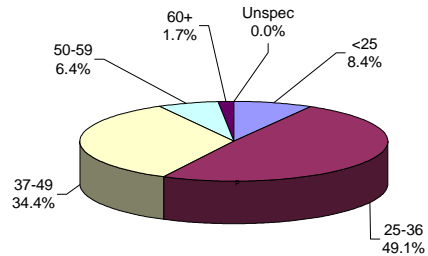
Prison Complex Offenders on January 13, 2003, By Age

Institution	Total	< 17 Years	17 Years	18-20 Years	21-22 Years	23-24 Years	25-27 Years	28-30 Years	31-33 Years	34-36 Years	37-39 Years	40-44 Years	45-49 Years	50-54 Years	55-59 Years	60-64 Years	65+ Years	Unspec
ADTC	619	0	0	2	9	14	19	18	46	45	76	111	76	76	57	31	39	0
	100%	0%	0%	0%	1%	2%	3%	3%	7%	7%	12%	18%	12%	12%	9%	5%	6%	0%
Subtotal	17,319	0	0	124	469	837	1,695	2,139	2,378	2,108	2,022	2,553	1,437	791	405	198	160	3
	100%	0%	0%	1%	3%	5%	10%	12%	14%	12%	12%	15%	8%	5%	2%	1%	1%	0%
Mahan - Female Prison	1,146	0	1	22	52	66	96	100	156	172	154	180	89	35	15	8	0	0
	100%	0%	0%	2%	5%	6%	8%	9%	14%	15%	13%	16%	8%	3%	1%	1%	0%	0%
Total Prison Complex	18,465	0	1	146	521	903	1,791	2,239	2,534	2,280	2,176	2,733	1,526	826	420	206	160	3
	100%	0%	0%	1%	3%	5%	10%	12%	14%	12%	12%	15%	8%	4%	2%	1%	1%	0%

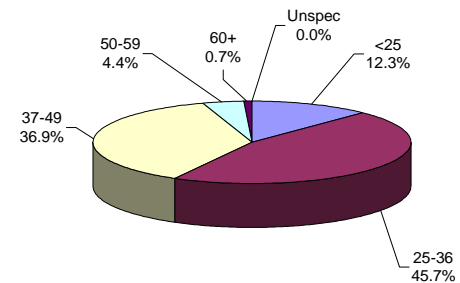
ADTC



PRISON MALES



FEMALE FACILITIES



The median age at ADTC is 43 years.

Thirty-three percent (33%) of the ADTC offenders are 50 years of age or older. This may be compared with 8% of male prison complex offenders and 5% of female (Edna Mahan) offenders.

The median age for prison complex males (excluding ADTC) is 35 years.

Forty-nine percent (49%) of the male prison complex population are age 25 to 36.

The median age for female inmates (Edna Mahan) is 35 years.

Forty-six (46%) of the women at Edna Mahan are age 25 to 36.

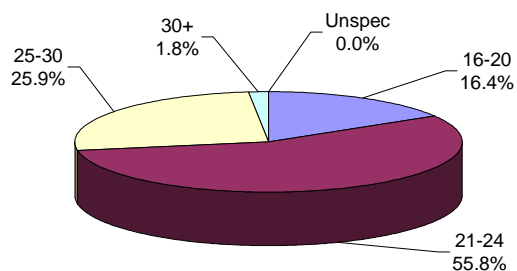
Youth Complex Offenders on January 13,2003, By Age

Institution	Total	< 17 Years	17 Years	18-20 Years	21-22 Years	23-24 Years	25-27 Years	28-30 Years	31-33 Years	34-36 Years	37-39 Years	40-44 Years	45-49 Years	50-54 Years	55-59 Years	60-64 Years	65+ Years	Unspec
Garden State	1,708 100%	2 0%	13 1%	278 16%	490 29%	481 28%	348 20%	65 4%	21 1%	5 0%	5 0%	0 0%	0 0%	0 0%	0 0%	0 0%	0 0%	0 0%
Mountainview Main	1,099 100%	0 0%	2 0%	176 16%	318 29%	320 29%	232 21%	40 4%	3 0%	2 0%	2 0%	2 0%	0 0%	1 0%	0 0%	1 0%	0 0%	0 0%
Mountainview Stokes	107 100%	0 0%	1 1%	2 2%	40 37%	27 25%	34 32%	3 3%	0 0%	0 0%	0 0%	0 0%	0 0%	0 0%	0 0%	0 0%	0 0%	0 0%
Mountainview Total	1,206 100%	0 0%	3 0%	178 15%	358 30%	347 29%	266 22%	43 4%	3 0%	2 0%	2 0%	2 2%	0 0%	1 1%	0 0%	1 0%	0 0%	0 0%
Wagner Main	1,058 100%	0 0%	0 0%	130 12%	260 25%	296 28%	273 26%	72 7%	16 2%	6 1%	1 0%	2 0%	0 0%	0 0%	1 0%	0 0%	1 0%	1 0%
Wagner Ad Seg	236 100%	0 0%	2 1%	63 27%	73 31%	48 20%	34 14%	8 3%	4 2%	3 1%	0 0%	1 0%	0 0%	0 0%	0 0%	0 0%	0 0%	0 0%
Wagner Adult Boot Camp	115 100%	0 0%	0 0%	41 36%	42 37%	19 17%	12 10%	1 1%	0 0%	0 0%	0 0%	0 0%	0 0%	0 0%	0 0%	0 0%	0 0%	0 0%
Wagner Total	1,409 100%	0 0%	2 0%	234 17%	375 27%	363 26%	319 23%	81 6%	20 1%	9 1%	1 0%	3 0%	0 0%	0 0%	1 0%	0 0%	1 0%	1 0%
Total Youth	4,324 100%	2 0%	18 0%	690 16%	1,223 28%	1,191 28%	933 22%	189 4%	44 1%	16 0%	8 0%	5 0%	0 0%	1 0%	1 0%	1 0%	1 0%	1 0%

Offenders In Other Facilities on January 13, 2003, By Age

Institution	Total	< 17 Years	17 Years	18-20 Years	21-22 Years	23-24 Years	25-27 Years	28-30 Years	31-33 Years	34-36 Years	37-39 Years	40-44 Years	45-49 Years	50-54 Years	55-59 Years	60-64 Years	65+ Years	Unspec
Central Medical	13 100%	0 0%	0 0%	0 0%	1 8%	0 0%	1 8%	1 8%	0 0%	1 8%	2 15%	3 23%	1 8%	0 0%	0 0%	0 0%	3 23%	0 0%
County Jail	783 100%	4 1%	6 1%	42 5%	60 8%	57 7%	77 10%	97 12%	89 11%	85 11%	72 9%	108 14%	51 7%	24 3%	6 1%	3 0%	1 0%	1 0%
EM/HC	85 100%	0 0%	0 0%	3 4%	11 13%	6 7%	17 20%	11 13%	9 11%	8 9%	5 6%	9 11%	2 2%	1 1%	1 1%	0 0%	2 2%	0 0%
Halfway House	2,717 100%	0 0%	0 0%	69 3%	194 7%	241 9%	386 14%	369 14%	359 13%	313 12%	248 9%	307 11%	129 5%	60 2%	28 1%	9 0%	5 0%	0 0%
Total Other Facilities	3,598 100%	4 0%	6 0%	114 3%	266 7%	304 8%	481 13%	478 13%	457 13%	407 11%	327 9%	427 12%	183 5%	85 2%	35 1%	12 0%	11 0%	1 0%

YOUTH COMPLEX

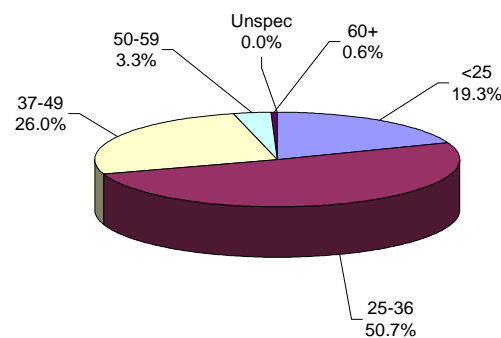


The median age for the youth complex is 23 years.

Eighty-two percent (82%) of all youth complex inmates are between the ages of 21 and 30.

Seventy-two percent (72%) are less than 25 years of age.

OFFENDERS IN OTHER FACILITIES



The median age for offenders in 'other facilities' is 31 years.

The median age for offenders housed in county jail is 32 years, while those offenders on electronic monitoring/ home confinement is 28 years. Offenders in halfway houses have a median age of 31 years.

**OFFENDERS IN NEW JERSEY CORRECTIONAL INSTITUTIONS
ON JANUARY 13, 2003, BY RACE/ETHNIC IDENTIFICATION**

In these tabulations, a Hispanic is a person of Mexican, Puerto Rican, Cuban, South American or other Spanish culture or origin (Spain or Portugal) regardless of complexion.

OFFENDERS IN CORRECTIONAL INSTITUTIONS ON JANUARY 13, 2003, BY RACE/ETHNIC IDENTIFICATION

Ethnic Identification	Total		Prison Males		Youth Complex		ADTC		Edna Mahan		Other Facilities	
	#	%	#	%	#	%	#	%	#	%	#	%
TOTAL OFFENDERS	26,387	100%	16,700	100%	4,324	100%	619	100%	1,146	100%	3,598	100%
Black	16,786	64%	10,593	63%	2,895	67%	160	26%	701	61%	2,437	68%
White	5,016	19%	3,104	19%	660	15%	358	58%	306	27%	588	16%
Hispanic	4,467	17%	2,926	18%	750	17%	97	16%	134	12%	560	16%
Asian	90	0%	57	0%	17	0%	4	1%	4	0%	8	0%
American Indian	8	0%	5	0%	2	0%	0	0%	0	0%	1	0%
Other	16	0%	13	0%	0	0%	0	0%	1	0%	2	0%
Unspecified	4	0%	2	0%	0	0%	0	0%	0	0%	2	0%

- On January 13, 2003, 64% of all state correctional institution offenders were Black, 19% were White and 17% were Hispanic.

Prison Complex Offenders on January 13, 2003, By Ethnic/Identification

Institution	Total	Black	White	Hispanic	Asian	American Indian	Other	Unspecified
Bayside Main	1,455 100%	936 64%	237 16%	272 19%	6 0%	2 0%	2 0%	0 0%
Bayside Farm	705 100%	487 69%	117 17%	100 14%	1 0%	0 0%	0 0%	0 0%
Bayside Ancora	326 100%	211 65%	46 14%	69 21%	0 0%	0 0%	0 0%	0 0%
Bayside Total	2,486 100%	1,634 66%	400 16%	441 18%	7 0%	2 0%	2 0%	0 0%
CRAF Jones Farm	195 100%	101 52%	47 24%	47 24%	0 0%	0 0%	0 0%	0 0%
CRAF Reception	772 100%	496 64%	157 20%	116 15%	2 0%	0 0%	0 0%	1 0%
CRAF Total	967 100%	597 62%	204 21%	163 17%	2 0%	0 0%	0 0%	1 0%
East Jersey Main	1,410 100%	944 67%	207 15%	253 18%	6 0%	0 0%	0 0%	0 0%
East Jersey Camp	127 100%	88 69%	24 19%	15 12%	0 0%	0 0%	0 0%	0 0%
East Jersey Marlboro	128 100%	96 75%	17 13%	15 12%	0 0%	0 0%	0 0%	0 0%
East Jersey Ad Seg	439 100%	308 70%	59 13%	71 16%	1 0%	0 0%	0 0%	0 0%
East Jersey Total	2,104 100%	1,436 68%	307 15%	354 17%	7 0%	0 0%	0 0%	0 0%

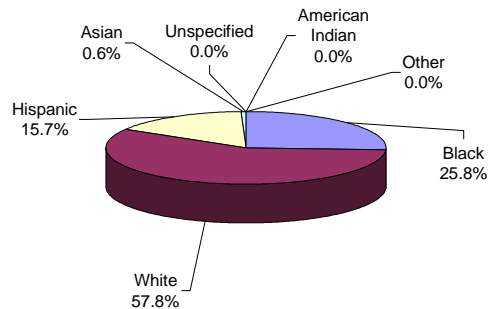
Prison Complex Offenders on January 13, 2003, By Ethnic/Identification

Institution	Total	Black	White	Hispanic	Asian	American Indian	Other	Unspecified
Midstate	623 100%	322 52%	180 29%	119 19%	0 0%	1 0%	0 0%	1 0%
NJ State Prison Ad Seg Female	28 100%	20 1%	5 0%	1 0%	0 0%	0 0%	2 0%	0 0%
NJ State Prison Main	1,876 100%	1,202 63%	398 21%	263 14%	11 1%	0 0%	2 0%	0 0%
NJ State Prison Total	1,904 100%	1,222 64%	403 21%	264 14%	11 1%	0 0%	4 0%	0 0%
Northern Main	2,009 100%	1,347 67%	209 10%	439 22%	12 1%	0 0%	2 0%	0 0%
Northern Ad Seg Male	447 100%	294 66%	70 16%	80 18%	2 0%	0 0%	1 0%	0 0%
Northern Total	2,456 100%	1,641 67%	279 11%	519 21%	14 1%	0 0%	3 0%	0 0%
Riverfront	1,153 100%	704 61%	212 18%	231 20%	3 0%	2 0%	1 0%	0 0%
Southern	1,690 100%	1,097 65%	314 19%	276 16%	3 0%	0 0%	0 0%	0 0%
South Woods	3,317 100%	1,940 58%	805 24%	559 17%	10 0%	0 0%	3 0%	0 0%
SUBTOTAL PRISON MALES	16,700 100%	10,593 63%	3,104 19%	2,926 18%	57 0%	5 0%	13 0%	2 0%

Prison Complex Offenders on January 13, 2003, By Race/Ethnic Identification

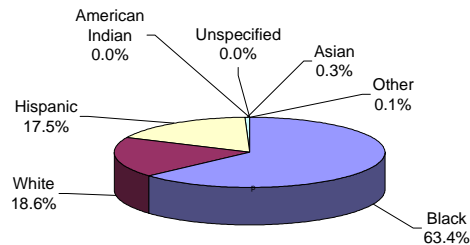
Institution	Total	Black	White	Hispanic	Asian	American Indian	Other	Unspecified
ADTC	619 100%	160 26%	358 58%	97 16%	4 1%	0 0%	0 0%	0 0%
Subtotal	17,319 100%	10,753 62%	3,462 20%	3,023 17%	61 0%	5 0%	13 0%	2 0%
Mahan - Female Prison	1,146 100%	701 61%	306 27%	134 12%	4 0%	0 0%	1 0%	0 0%
Total Prison Complex	18,465 100%	11,454 62%	3,768 20%	3,157 17%	65 0%	5 0%	14 0%	2 0%

ADTC



White offenders comprised 57.8% of the offenders at ADTC.

PRISON MALES

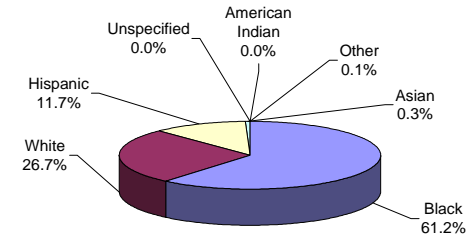


The largest proportion of Black male offenders in a major facility was at East Jersey State Prison (68%).

The largest proportion of White male offenders at a major facility was at Mid-State Correctional Facility (29%).

The largest proportion of Hispanic male offenders at a major facility was at Northern State Prison (21%).

FEMALE FACILITIES



Black offenders comprised 61% of the population at Edna Mahan. This may be compared with Black offenders comprising 63% of prison complex males.

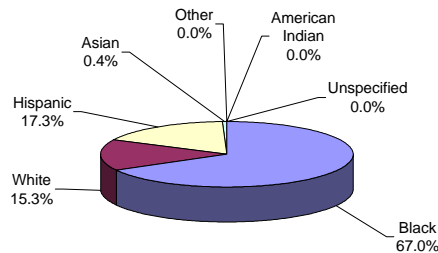
Youth Complex Offenders on January 13, 2003, By Race/Ethnic Identification

Institution	Total	Black	White	Hispanic	Asian	American Indian	Other	Unspecified
Garden State	1,708 100%	1,036 61%	343 20%	318 19%	10 1%	1 0%	0 0%	0 0%
Mountianview Main	1,099 100%	743 68%	159 14%	192 17%	4 0%	1 0%	0 0%	0 0%
Mountianview Stokes	107 100%	69 64%	20 19%	18 17%	0 0%	0 0%	0 0%	0 0%
Mountianview Total	1,206 100%	812 67%	179 15%	210 17%	4 0%	1 0%	0 0%	0 0%
Wagner Main	1,059 100%	782 74%	93 9%	181 17%	3 0%	0 0%	0 0%	0 0%
Wagner Ad Seg	236 100%	187 79%	20 8%	29 12%	0 0%	0 0%	0 0%	0 0%
Wagner Adult Boot Camp	115 100%	78 68%	25 22%	12 10%	0 0%	0 0%	0 0%	0 0%
Wagner Total	1,410 100%	1,047 74%	138 10%	222 16%	3 0%	0 0%	0 0%	0 0%
Total Youth	4,324 100%	2,895 67%	660 15%	750 17%	17 0%	2 0%	0 0%	0 0%

Offenders In Other Facilities on January 13, 2003, By Race/Ethnic Identification

Institution	Total	Black	White	Hispanic	Asian	American Indian	Other	Unspecified
Central Medical	13 100%	7 54%	2 15%	4 31%	0 0%	0 0%	0 0%	0 0%
County Jail	783 100%	490 63%	175 22%	111 14%	4 1%	0 0%	2 0%	1 0%
EM/HC	85 100%	51 60%	14 16%	20 24%	0 0%	0 0%	0 0%	0 0%
Halfway House	2,717 100%	1,889 70%	397 15%	425 16%	4 0%	1 0%	0 0%	1 0%
Total Other Facilities	3,598 100%	2,437 68%	588 16%	560 16%	8 0%	1 0%	2 0%	2 0%

YOUTH COMPLEX

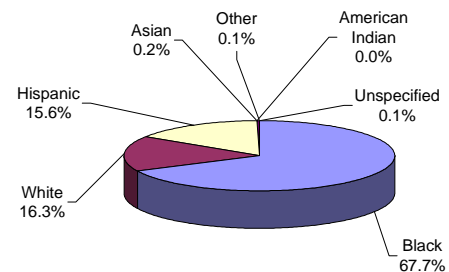


The largest proportion of Black offenders in the youth complex facilities was housed at Wagner (74%).

The largest proportion of White offenders in the youth complex facilities was housed at Garden State (20%).

The largest proportion of Hispanic offenders in the youth complex facilities was housed at Garden State (19%).

OFFENDERS IN OTHER FACILITIES



Race and ethnicity for inmates assigned to 'other facilities' was roughly equivalent to that for the total adult inmate population.

**OFFENDERS IN NEW JERSEY CORRECTIONAL INSTITUTIONS
ON JANUARY 13, 2003, BY COUNTY OF COMMITMENT**

OFFENDERS IN NEW JERSEY CORRECTIONAL INSTITUTIONS ON JANUARY 13, 2003, BY COUNTY OF COMMITMENT

County of Commitment	Total		Prison Males		Youth Complex		ADTC		Edna Mahan		Other Facilities	
	#	%	#	%	#	%	#	%	#	%	#	%
TOTAL OFFENDERS	26,387	100%	16,700	100%	4,324	100%	619	100%	1,146	100%	3,598	100%
Atlantic	1,918	7%	1,192	7%	212	5%	33	5%	105	9%	376	10%
Bergen	1,012	4%	693	4%	114	3%	40	6%	50	4%	115	3%
Burlington	509	2%	301	2%	93	2%	32	5%	23	2%	60	2%
Camden	3,477	13%	2,152	13%	574	13%	69	11%	147	13%	535	15%
Cape May	461	2%	296	2%	55	1%	15	2%	30	3%	65	2%
Cumberland	539	2%	362	2%	80	2%	21	3%	17	1%	59	2%
Essex	4,830	18%	3,179	19%	912	21%	40	6%	154	13%	545	15%
Gloucester	342	1%	208	1%	62	1%	19	3%	9	1%	44	1%
Hudson	2,455	9%	1,576	9%	428	10%	33	5%	99	9%	319	9%
Hunterdon	81	0%	44	0%	14	0%	7	1%	2	0%	14	0%
Mercer	1,275	5%	829	5%	216	5%	27	4%	51	4%	152	4%
Middlesex	1,369	5%	810	5%	220	5%	57	9%	84	7%	198	6%
Monmouth	1,430	5%	889	5%	203	5%	47	8%	69	6%	222	6%
Morris	372	1%	234	1%	51	1%	28	5%	27	2%	32	1%
Ocean	845	3%	501	3%	155	4%	33	5%	47	4%	109	3%
Passaic	2,179	8%	1,368	8%	383	9%	46	7%	87	8%	295	8%
Salem	213	1%	143	1%	25	1%	9	1%	6	1%	30	1%
Somerset	406	2%	232	1%	65	2%	13	2%	22	2%	74	2%
Sussex	184	1%	96	1%	43	1%	13	2%	10	1%	22	1%
Union	2,211	8%	1,410	8%	383	9%	22	4%	94	8%	302	8%
Warren	177	1%	94	1%	32	1%	14	2%	9	1%	28	1%
Not Coded	102	0%	91	1%	4	0%	1	0%	4	0%	2	0%

- Essex County has the highest percentage of commitments at the prison complex (19%) and the youth complex (21%).
- Camden County and Essex County have the highest percentage of commitments at Edna Mahan (13%) .
- Camden County has the highest percentage of commitments at ADTC (11%).
- Camden County and Essex County have the joint highest percentage of commitments (15%) at other adult facilities.
- Two counties, Essex and Camden, combine to comprise approximately a third of total DOC commitments.

Prison Complex Offenders on January 13, 2003, By County Of Commitment

Institution	Total	Atl	Ber	Burl	Cam	Cape May	Cum	Ess	Glou	Hud	Hunt	Mer	Mid	Mon	Mor	Oc	Pas	Sal	Som	Sus	Un	War	Not Coded
Bayside Main	1,455 100%	144 10%	54 4%	22 2%	228 16%	24 2%	44 3%	249 17%	12 1%	152 10%	4 0%	64 4%	62 4%	65 4%	22 2%	44 3%	104 7%	17 1%	15 1%	8 1%	107 7%	8 1%	6 0%
Bayside Farm	705 100%	81 11%	30 4%	8 1%	105 15%	15 2%	17 2%	117 17%	16 2%	62 9%	2 0%	27 4%	26 4%	26 4%	10 1%	27 4%	52 7%	10 1%	8 1%	4 1%	55 8%	5 1%	2 0%
Bayside Ancora	326 100%	32 10%	11 3%	6 2%	57 17%	11 3%	6 2%	49 15%	3 1%	26 8%	0 0%	19 6%	10 3%	22 7%	5 2%	6 2%	22 7%	1 0%	5 2%	2 1%	33 10%	0 0%	0 0%
Bayside Total	2,486 100%	257 10%	95 4%	36 1%	390 16%	50 2%	67 3%	415 17%	31 1%	240 10%	6 0%	110 4%	98 4%	113 5%	37 1%	77 3%	178 7%	28 1%	28 1%	14 1%	195 8%	13 1%	8 0%
CRAF Jones Farm	195 100%	11 6%	13 7%	3 2%	31 16%	4 2%	2 1%	18 9%	2 1%	19 10%	1 1%	5 3%	12 6%	20 10%	4 2%	7 4%	30 15%	1 1%	1 1%	0 0%	10 5%	1 1%	0 0%
CRAF Reception	772 100%	66 9%	42 5%	9 1%	98 13%	21 3%	23 3%	83 11%	6 1%	71 9%	7 1%	28 4%	35 5%	62 8%	4 1%	23 3%	100 13%	12 2%	13 2%	2 0%	56 7%	7 1%	4 1%
CRAF Total	967 100%	77 8%	55 6%	12 1%	129 13%	25 3%	25 3%	101 10%	8 1%	90 9%	8 1%	33 3%	47 5%	82 8%	8 1%	30 3%	130 13%	13 1%	14 1%	2 0%	66 7%	8 1%	4 0%
East Jersey Main	1,410 100%	58 4%	68 5%	20 1%	100 7%	12 1%	24 2%	375 27%	16 1%	144 10%	5 0%	63 4%	68 5%	74 5%	25 2%	28 2%	135 10%	7 0%	23 2%	7 0%	144 10%	4 0%	10 1%
East Jersey Camp	127 100%	1 1%	5 4%	0 0%	7 6%	0 0%	0 0%	23 18%	0 0%	17 13%	0 0%	4 3%	7 6%	13 10%	2 2%	7 6%	14 11%	1 1%	2 2%	3 2%	20 16%	0 0%	1 1%
East Jersey Marlboro	128 100%	6 5%	5 4%	2 2%	4 3%	1 1%	0 0%	25 20%	0 0%	19 15%	1 1%	10 8%	5 4%	6 5%	4 3%	2 2%	17 13%	0 0%	1 1%	0 0%	20 16%	0 0%	0 0%
East Jersey Ad Seg	439 100%	30 7%	12 3%	8 2%	52 12%	4 1%	9 2%	119 27%	3 1%	45 10%	2 0%	21 5%	22 5%	17 4%	4 1%	8 2%	35 8%	4 1%	4 1%	4 1%	34 8%	1 0%	1 0%
East Jersey Total	2,104 100%	95 5%	90 4%	30 1%	163 8%	17 1%	33 2%	542 26%	19 1%	225 11%	8 0%	98 5%	102 5%	110 5%	35 2%	45 2%	201 10%	12 1%	30 1%	14 1%	218 10%	5 0%	12 1%

Prison Complex Offenders on January 13, 2003, By County Of Commitment

Institution	Total	Atl	Ber	Burl	Cam	Cape May	Cum	Ess	Glou	Hud	Hunt	Mer	Mid	Mon	Mor	Oc	Pas	Sal	Som	Sus	Un	War	Not Coded
Midstate	623	37	22	17	67	7	10	91	6	52	1	54	33	44	12	39	58	10	12	5	40	5	1
	100%	6%	4%	3%	11%	1%	2%	15%	1%	8%	0%	9%	5%	7%	2%	6%	9%	2%	2%	1%	6%	1%	0%
NJ State Prison Ad Seg Female	28	5	0	0	4	0	0	2	0	4	0	0	2	2	0	2	1	0	1	0	5	0	0
	100%	0%	0%	0%	0%	0%	0%	0%	0%	0%	0%	0%	0%	0%	0%	0%	0%	0%	0%	0%	0%	0%	0%
NJ State Prison Main	1,876	127	96	45	188	23	45	448	18	134	2	126	88	98	26	54	117	7	32	14	137	9	42
	100%	7%	5%	2%	10%	1%	2%	24%	1%	7%	0%	7%	5%	5%	1%	3%	6%	0%	2%	1%	7%	0%	2%
NJ State Prison Total	1,904	132	96	45	192	23	45	450	18	138	2	126	90	100	26	56	118	7	33	14	142	9	42
	100%	7%	5%	2%	10%	1%	2%	24%	1%	7%	0%	7%	5%	5%	1%	3%	6%	0%	2%	1%	7%	0%	2%
Northern Main	2,009	79	88	24	137	15	18	545	15	272	3	81	106	82	22	38	195	6	28	12	230	9	4
	100%	4%	4%	1%	7%	1%	1%	27%	1%	14%	0%	4%	5%	4%	1%	2%	10%	0%	1%	1%	11%	0%	0%
Northern Ad Seg Male	447	13	24	8	23	5	6	124	1	61	0	9	23	14	8	13	56	2	3	5	46	1	2
	100%	3%	5%	2%	5%	1%	1%	28%	0%	14%	0%	2%	5%	3%	2%	3%	13%	0%	1%	1%	10%	0%	0%
Northern Total	2,456	92	112	32	160	20	24	669	16	333	3	90	129	96	30	51	251	8	31	17	276	10	6
	100%	4%	5%	1%	7%	1%	1%	27%	1%	14%	0%	4%	5%	4%	1%	2%	10%	0%	1%	1%	11%	0%	0%
Riverfront	1,153	61	40	31	292	23	24	139	26	80	7	67	46	68	10	35	87	8	11	7	79	10	2
	100%	5%	3%	3%	25%	2%	2%	12%	2%	7%	1%	6%	4%	6%	1%	3%	8%	1%	1%	1%	7%	1%	0%
Southern	1,690	150	64	28	265	46	38	248	25	158	3	80	83	98	26	49	127	18	26	5	138	11	4
	100%	9%	4%	2%	16%	3%	2%	15%	1%	9%	0%	5%	5%	6%	2%	3%	8%	1%	2%	0%	8%	1%	0%
South Woods	3317	291	119	70	494	85	96	524	59	260	6	171	182	178	50	119	218	39	47	18	256	23	12
	100%	9%	4%	2%	15%	3%	3%	16%	2%	8%	0%	5%	5%	5%	2%	4%	7%	1%	1%	1%	8%	1%	0%
SUBTOTAL PRISON MALES	16,700	1,192	693	301	2,152	296	362	3,179	208	1,576	44	829	810	889	234	501	1,368	143	232	96	1,410	94	91
	100%	7%	4%	2%	13%	2%	2%	19%	1%	9%	0%	5%	5%	5%	1%	3%	8%	1%	1%	1%	8%	1%	1%

Prison Complex Offenders on January 13, 2003, By County Of Commitment

Institution	Total	Atl	Ber	Burl	Cam	Cape May	Cum	Ess	Glou	Hud	Hunt	Mer	Mid	Mon	Mor	Oc	Pas	Sal	Som	Sus	Un	War	Not Coded
ADTC	619 100%	33 5%	40 6%	32 5%	69 11%	15 2%	21 3%	40 6%	19 3%	33 5%	7 1%	27 4%	57 9%	47 8%	28 5%	33 5%	46 7%	9 1%	13 2%	13 2%	22 4%	14 2%	1 0%
Subtotal	17,319 100%	1,225 7%	733 4%	333 2%	2,221 13%	311 2%	383 2%	3,219 19%	227 1%	1,609 9%	51 0%	856 5%	867 5%	936 5%	262 2%	534 3%	1,414 8%	152 1%	245 1%	109 1%	1,432 8%	108 1%	92 1%
Mahan - Female Prison	1,146 100%	105 9%	50 4%	23 2%	147 13%	30 3%	17 1%	154 13%	9 1%	99 9%	2 0%	51 4%	84 7%	69 6%	27 2%	47 4%	87 8%	6 1%	22 2%	10 1%	94 8%	9 1%	4 0%
Total Prison Complex	18,465 100%	1,330 7%	783 4%	356 2%	2,368 13%	341 2%	400 2%	3,373 18%	236 1%	1,708 9%	53 0%	907 5%	951 5%	1,005 5%	289 2%	581 3%	1,501 8%	158 1%	267 1%	119 1%	1,526 8%	117 1%	96 1%

Youth Complex Offenders on January 13, 2003, By County Of Commitment

Institution	Total	Atl	Ber	Burl	Cam	Cape May	Cum	Ess	Glou	Hud	Hunt	Mer	Mid	Mon	Mor	Oc	Pas	Sal	Som	Sus	Un	War	Not Coded
Garden State	1,708 100%	101 6%	48 3%	52 3%	224 13%	25 1%	41 2%	297 17%	31 2%	158 9%	6 0%	101 6%	86 5%	93 5%	22 1%	78 5%	137 8%	12 1%	27 2%	20 1%	131 8%	17 1%	1 0%
Mountianview Main	1,099 100%	44 4%	28 3%	15 1%	126 11%	14 1%	13 1%	267 24%	7 1%	117 11%	5 0%	45 4%	69 6%	42 4%	11 1%	41 4%	102 9%	2 0%	16 1%	15 1%	109 10%	9 1%	2 0%
Mountianview Stokes	107 100%	1 1%	3 3%	1 1%	12 11%	1 1%	1 1%	28 26%	0 0%	9 8%	1 1%	7 7%	8 7%	14 13%	2 2%	0 0%	9 8%	0 0%	0 0%	3 3%	5 5%	2 2%	0 0%
Mountianview Total	1,206 100%	45 4%	31 3%	16 1%	138 11%	15 1%	14 1%	295 24%	7 1%	126 10%	6 0%	52 4%	77 6%	56 5%	13 1%	41 3%	111 9%	2 0%	16 1%	18 1%	114 9%	11 1%	2 0%
Wagner Main	1,059 100%	48 5%	30 3%	19 2%	155 15%	11 1%	18 2%	234 22%	17 2%	105 10%	2 0%	46 4%	39 4%	44 4%	15 1%	28 3%	109 10%	10 1%	18 2%	2 0%	104 10%	4 0%	1 0%
Wagner Ad Seg	236 100%	14 6%	4 2%	4 2%	30 13%	3 1%	5 2%	65 28%	5 2%	27 11%	0 0%	10 4%	15 6%	8 3%	0 0%	5 2%	18 8%	1 0%	4 2%	0 0%	18 8%	0 0%	0 0%
Wagner Adult Boot Camp	115 100%	4 3%	1 1%	2 2%	27 23%	1 1%	2 2%	21 18%	2 2%	12 10%	0 0%	7 6%	3 3%	2 2%	1 1%	3 3%	8 7%	0 0%	0 0%	3 3%	16 14%	0 0%	0 0%
Wagner Total	1,410 100%	66 5%	35 2%	25 2%	212 15%	15 1%	25 2%	320 23%	24 2%	144 10%	2 0%	63 4%	57 4%	54 4%	16 1%	36 3%	135 10%	11 1%	22 2%	5 0%	138 10%	4 0%	1 0%
Total Youth	4,324 100%	212 5%	68 2%	20 0%	100 2%	12 0%	24 1%	375 9%	16 0%	144 3%	5 0%	63 1%	68 2%	74 2%	25 1%	28 1%	135 3%	7 0%	23 1%	7 0%	144 3%	4 0%	10 0%

Offenders In Other Facilities on January 13, 2003, By County Of Commitment

Institution	Total	Atl	Ber	Burl	Cam	Cape May	Cum	Ess	Glou	Hud	Hunt	Mer	Mid	Mon	Mor	Oc	Pas	Sal	Som	Sus	Un	War	Not Coded
Central Medical	13 100%	1 8%	0 0%	0 0%	2 15%	0 0%	0 0%	0 0%	0 0%	1 8%	0 0%	0 0%	3 23%	1 8%	0 0%	0 0%	1 8%	0 0%	0 0%	0 0%	4 31%	0 0%	0 0%
County Jail	783 100%	190 24%	14 2%	12 2%	125 16%	3 0%	12 2%	85 11%	10 1%	42 5%	4 1%	28 4%	33 4%	59 8%	9 1%	4 1%	57 7%	8 1%	29 4%	16 2%	31 4%	12 2%	0 0%
EM/HC	85 100%	3 4%	1 1%	3 4%	16 19%	2 2%	0 0%	8 9%	2 2%	12 14%	0 0%	4 5%	6 7%	4 5%	0 0%	3 4%	12 14%	2 2%	0 0%	0 0%	6 7%	1 1%	0 0%
Halfway House	2,717 100%	182 7%	100 4%	45 2%	392 14%	60 2%	47 2%	452 17%	32 1%	264 10%	10 0%	120 4%	156 6%	158 6%	23 1%	102 4%	225 8%	20 1%	45 2%	6 0%	261 10%	15 1%	2 0%
Total Other Facilities	3,598 100%	376 10%	115 3%	60 2%	535 15%	65 2%	59 2%	545 15%	44 1%	319 9%	14 0%	152 4%	198 6%	222 6%	32 1%	109 3%	295 8%	30 1%	74 2%	22 1%	302 8%	28 1%	2 0%