

**OFFENDERS IN NEW JERSEY CORRECTIONAL INSTITUTIONS
ON JANUARY 13, 2003, BY AGE**

The age of the offender is the chronological age as of January 1, 2003.

OFFENDERS IN CORRECTIONAL INSTITUTIONS ON JANUARY 13, 2003, BY AGE

Age	Total		Prison Males		Youth Complex		ADTC		Edna Mahan		Other Facilities	
	#	%	#	%	#	%	#	%	#	%	#	%
TOTAL OFFENDERS	26,387	100%	16,700	100%	4,324	100%	619	100%	1,146	100%	3,598	100%
< 17 Years	6	0%	0	0%	2	0%	0	0%	0	0%	4	0%
17 Years	25	0%	0	0%	18	0%	0	0%	1	0%	6	0%
18-20 Years	950	4%	122	1%	690	16%	2	0%	22	2%	114	3%
21-22 Years	2,010	8%	460	3%	1,223	28%	9	1%	52	5%	266	7%
23-24 Years	2,398	9%	823	5%	1,191	28%	14	2%	66	6%	304	8%
25-27 Years	3,205	12%	1,676	10%	933	22%	19	3%	96	8%	481	13%
28-30 Years	2,906	11%	2,121	13%	189	4%	18	3%	100	9%	478	13%
31-33 Years	3,035	12%	2,332	14%	44	1%	46	7%	156	14%	457	13%
34-36 Years	2,703	10%	2,063	12%	16	0%	45	7%	172	15%	407	11%
37-39 Years	2,511	10%	1,946	12%	8	0%	76	12%	154	13%	327	9%
40-44 Years	3,165	12%	2,442	15%	5	0%	111	18%	180	16%	427	12%
45-49 Years	1,709	6%	1,361	8%	0	0%	76	12%	89	8%	183	5%
50-54 Years	912	3%	715	4%	1	0%	76	12%	35	3%	85	2%
55-59 Years	456	2%	348	2%	1	0%	57	9%	15	1%	35	1%
60-64 Years	219	1%	167	1%	1	0%	31	5%	8	1%	12	0%
65+ Years	172	1%	121	1%	1	0%	39	6%	0	0%	11	0%
Unspec	5	0%	3	0%	1	0%	0	0%	0	0%	1	0%

- The median age for adult residents is 32 years.
- Four percent (4%) of all adult offenders are 20 years of age or younger.
- Forty percent (40%) of all adult offenders are between the ages of 21-30.
- Thirty percent (31%) of all adult offenders are 31 to 39 years of age.
- Twenty-five percent (25%) of all adult offenders are 40 years of age and older.

Prison Complex Offenders on January 13, 2003, By Age

Institution	Total	< 17 Years	17 Years	18-20 Years	21-22 Years	23-24 Years	25-27 Years	28-30 Years	31-33 Years	34-36 Years	37-39 Years	40-44 Years	45-49 Years	50-54 Years	55-59 Years	60-64 Years	65+ Years	Unspec
Bayside Main	1,455 100%	0 0%	0 0%	3 0%	46 3%	95 7%	189 13%	201 14%	247 17%	171 12%	157 11%	182 13%	88 6%	43 3%	15 1%	13 1%	4 0%	1 0%
Bayside Farm	705 100%	0 0%	0 0%	2 0%	0 0%	15 2%	57 8%	114 16%	106 15%	87 12%	90 13%	128 18%	64 9%	23 3%	11 2%	6 1%	2 0%	0 0%
Bayside Ancora	326 100%	0 0%	0 0%	0 0%	0 0%	6 2%	34 10%	48 15%	64 20%	52 16%	51 16%	39 12%	21 6%	4 1%	6 2%	1 0%	0 0%	0 0%
Bayside Total	2,486 100%	0 0%	0 0%	5 0%	46 2%	116 5%	280 11%	363 15%	417 17%	310 12%	298 12%	349 14%	173 7%	70 3%	32 1%	20 1%	6 0%	1 0%
CRAF Jones Farm	195 100%	0 0%	0 0%	0 0%	0 0%	0 0%	20 10%	37 19%	34 17%	19 10%	27 14%	44 23%	7 4%	5 3%	2 1%	0 0%	0 0%	0 0%
CRAF Reception	771 100%	0 0%	0 0%	40 5%	57 7%	62 8%	78 10%	93 12%	94 12%	89 12%	99 13%	93 12%	30 4%	22 3%	12 2%	1 0%	1 0%	1 0%
CRAF Total	966 100%	0 0%	0 0%	40 4%	57 6%	62 6%	98 10%	130 13%	128 13%	108 11%	126 13%	137 14%	37 4%	27 3%	14 1%	1 0%	1 0%	1 0%
East Jersey Main	1,410 100%	0 0%	0 0%	2 0%	11 1%	30 2%	111 8%	155 11%	187 13%	172 12%	180 13%	234 17%	153 11%	81 6%	55 4%	29 2%	10 1%	0 0%
East Jersey Camp	127 100%	0 0%	0 0%	0 0%	0 0%	2 2%	6 5%	19 15%	26 20%	14 11%	18 14%	23 18%	12 9%	7 6%	0 0%	0 0%	0 0%	0 0%
East Jersey Marlboro	128 100%	0 0%	0 0%	0 0%	1 1%	0 0%	5 4%	14 11%	23 18%	25 20%	24 19%	19 15%	12 9%	4 3%	0 0%	1 1%	0 0%	0 0%
East Jersey Ad Seg	439 100%	0 0%	0 0%	15 3%	57 13%	63 14%	65 15%	57 13%	40 9%	30 7%	34 8%	35 8%	21 5%	14 3%	5 1%	1 0%	2 0%	0 0%
East Jersey Total	2,104 100%	0 0%	0 0%	17 1%	69 3%	95 5%	187 9%	245 12%	276 13%	241 11%	256 12%	311 15%	198 9%	106 5%	60 3%	31 1%	12 1%	0 0%

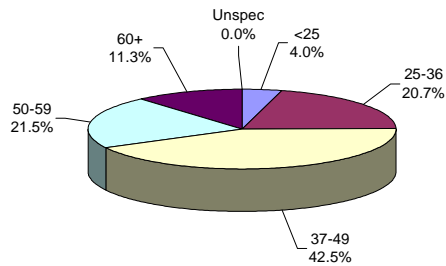
Prison Complex Offenders on January 13, 2003, By Age

Institution	Total	< 17 Years	17 Years	18-20 Years	21-22 Years	23-24 Years	25-27 Years	28-30 Years	31-33 Years	34-36 Years	37-39 Years	40-44 Years	45-49 Years	50-54 Years	55-59 Years	60-64 Years	65+ Years	Unspec
Midstate	623 100%	0 0%	0 0%	0 0%	9 1%	12 2%	49 8%	60 10%	99 16%	70 11%	65 10%	104 17%	71 11%	46 7%	10 2%	13 2%	15 2%	0 0%
NJ State Prison Ad Seg Female	28 100%	0 0%	0 0%	1 4%	4 14%	5 18%	4 14%	5 18%	5 18%	1 4%	2 7%	1 4%	0 0%	0 0%	0 0%	0 0%	0 0%	0 0%
NJ State Prison Main	1,876 100%	0 0%	0 0%	5 0%	48 3%	109 6%	171 9%	170 9%	201 11%	206 11%	206 11%	305 16%	182 10%	132 7%	75 4%	33 2%	33 2%	0 0%
NJ State Prison Total	1,904 100%	0 0%	0 0%	6 0%	52 3%	114 6%	175 9%	175 9%	206 11%	207 11%	208 11%	306 16%	182 10%	132 7%	75 4%	33 2%	33 2%	0 0%
Northern Main	2,009 100%	0 0%	0 0%	25 1%	89 4%	137 7%	233 12%	308 15%	294 15%	245 12%	179 9%	269 13%	144 7%	47 2%	25 1%	8 0%	6 0%	0 0%
Northern Ad Seg Male	447 100%	0 0%	0 0%	7 2%	13 3%	17 4%	41 9%	68 15%	52 12%	56 13%	51 11%	73 16%	34 8%	21 5%	10 2%	2 0%	1 0%	1 0%
Northern Total	2,456 100%	0 0%	0 0%	32 1%	102 4%	154 6%	274 11%	376 15%	346 14%	301 12%	230 9%	342 14%	178 7%	68 3%	35 1%	10 0%	7 0%	1 0%
Riverfront	1,153 100%	0 0%	0 0%	3 0%	22 2%	55 5%	127 11%	156 14%	181 16%	152 13%	124 11%	152 13%	95 8%	44 4%	27 2%	12 1%	3 0%	0 0%
Southern	1,690 100%	0 0%	0 0%	2 0%	18 1%	52 3%	171 10%	224 13%	243 14%	256 15%	238 14%	264 16%	136 8%	55 3%	22 1%	6 0%	3 0%	0 0%
South Woods	3,317 100%	0 0%	0 0%	17 1%	85 3%	163 5%	315 9%	392 12%	436 13%	418 13%	401 12%	477 14%	291 9%	167 5%	73 2%	41 1%	41 1%	0 0%
SUBTOTAL PRISON MALES	16,700 100%	0 0%	0 0%	122 1%	460 3%	823 5%	1,676 10%	2,121 13%	2,332 14%	2,063 12%	1,946 12%	2,442 15%	1,361 8%	715 4%	348 2%	167 1%	121 1%	3 0%

Prison Complex Offenders on January 13, 2003, By Age

Institution	Total	< 17 Years	17 Years	18-20 Years	21-22 Years	23-24 Years	25-27 Years	28-30 Years	31-33 Years	34-36 Years	37-39 Years	40-44 Years	45-49 Years	50-54 Years	55-59 Years	60-64 Years	65+ Years	Unspec
ADTC	619	0	0	2	9	14	19	18	46	45	76	111	76	76	57	31	39	0
	100%	0%	0%	0%	1%	2%	3%	3%	7%	7%	12%	18%	12%	12%	9%	5%	6%	0%
Subtotal	17,319	0	0	124	469	837	1,695	2,139	2,378	2,108	2,022	2,553	1,437	791	405	198	160	3
	100%	0%	0%	1%	3%	5%	10%	12%	14%	12%	12%	15%	8%	5%	2%	1%	1%	0%
Mahan - Female Prison	1,146	0	1	22	52	66	96	100	156	172	154	180	89	35	15	8	0	0
	100%	0%	0%	2%	5%	6%	8%	9%	14%	15%	13%	16%	8%	3%	1%	1%	0%	0%
Total Prison Complex	18,465	0	1	146	521	903	1,791	2,239	2,534	2,280	2,176	2,733	1,526	826	420	206	160	3
	100%	0%	0%	1%	3%	5%	10%	12%	14%	12%	12%	15%	8%	4%	2%	1%	1%	0%

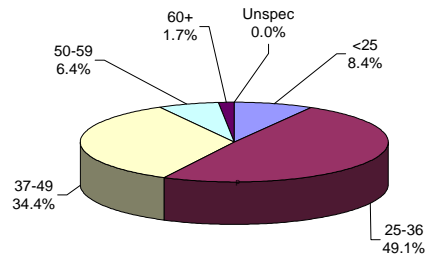
ADTC



The median age at ADTC is 43 years.

Thirty-three percent (33%) of the ADTC offenders are 50 years of age or older. This may be compared with 8% of male prison complex offenders and 5% of female (Edna Mahan) offenders.

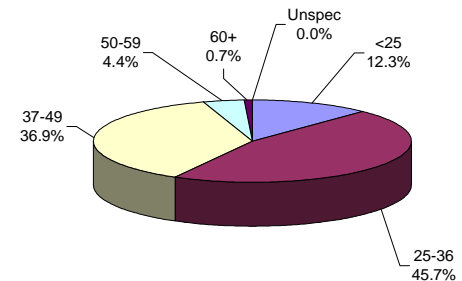
PRISON MALES



The median age for prison complex males (excluding ADTC) is 35 years.

Forty-nine percent (49%) of the male prison complex population are age 25 to 36.

FEMALE FACILITIES



The median age for female inmates (Edna Mahan) is 35 years.

Forty-six (46%) of the women at Edna Mahan are age 25 to 36.

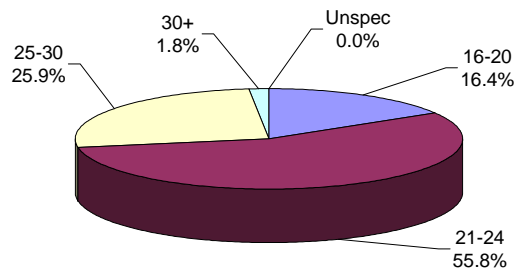
Youth Complex Offenders on January 13, 2003, By Age

Institution	Total	< 17 Years	17 Years	18-20 Years	21-22 Years	23-24 Years	25-27 Years	28-30 Years	31-33 Years	34-36 Years	37-39 Years	40-44 Years	45-49 Years	50-54 Years	55-59 Years	60-64 Years	65+ Years	Unspec
Garden State	1,708	2	13	278	490	481	348	65	21	5	5	0	0	0	0	0	0	0
	100%	0%	1%	16%	29%	28%	20%	4%	1%	0%	0%	0%	0%	0%	0%	0%	0%	0%
Mountainview Main	1,099	0	2	176	318	320	232	40	3	2	2	2	0	1	0	1	0	0
	100%	0%	0%	16%	29%	29%	21%	4%	0%	0%	0%	0%	0%	0%	0%	0%	0%	0%
Mountainview Stokes	107	0	1	2	40	27	34	3	0	0	0	0	0	0	0	0	0	0
	100%	0%	1%	2%	37%	25%	32%	3%	0%	0%	0%	0%	0%	0%	0%	0%	0%	0%
Mountainview Total	1,206	0	3	178	358	347	266	43	3	2	2	2	0	1	0	1	0	0
	100%	0%	0%	15%	30%	29%	22%	4%	0%	0%	0%	2%	0%	1%	0%	0%	0%	0%
Wagner Main	1,058	0	0	130	260	296	273	72	16	6	1	2	0	0	1	0	1	1
	100%	0%	0%	12%	25%	28%	26%	7%	2%	1%	0%	0%	0%	0%	0%	0%	0%	0%
Wagner Ad Seg	236	0	2	63	73	48	34	8	4	3	0	1	0	0	0	0	0	0
	100%	0%	1%	27%	31%	20%	14%	3%	2%	1%	0%	0%	0%	0%	0%	0%	0%	0%
Wagner Adult Boot Camp	115	0	0	41	42	19	12	1	0	0	0	0	0	0	0	0	0	0
	100%	0%	0%	36%	37%	17%	10%	1%	0%	0%	0%	0%	0%	0%	0%	0%	0%	0%
Wagner Total	1,409	0	2	234	375	363	319	81	20	9	1	3	0	0	1	0	1	1
	100%	0%	0%	17%	27%	26%	23%	6%	1%	1%	0%	0%	0%	0%	0%	0%	0%	0%
Total Youth	4,324	2	18	690	1,223	1,191	933	189	44	16	8	5	0	1	1	1	1	1
	100%	0%	0%	16%	28%	28%	22%	4%	1%	0%	0%	0%	0%	0%	0%	0%	0%	0%

Offenders In Other Facilities on January 13, 2003, By Age

Institution	Total	< 17 Years	17 Years	18-20 Years	21-22 Years	23-24 Years	25-27 Years	28-30 Years	31-33 Years	34-36 Years	37-39 Years	40-44 Years	45-49 Years	50-54 Years	55-59 Years	60-64 Years	65+ Years	Unspec
Central Medical	13	0	0	0	1	0	1	1	0	1	2	3	1	0	0	0	3	0
	100%	0%	0%	0%	8%	0%	8%	8%	0%	8%	15%	23%	8%	0%	0%	0%	23%	0%
County Jail	783	4	6	42	60	57	77	97	89	85	72	108	51	24	6	3	1	1
	100%	1%	1%	5%	8%	7%	10%	12%	11%	11%	9%	14%	7%	3%	1%	0%	0%	0%
EM/HC	85	0	0	3	11	6	17	11	9	8	5	9	2	1	1	0	2	0
	100%	0%	0%	4%	13%	7%	20%	13%	11%	9%	6%	11%	2%	1%	1%	0%	2%	0%
Halfway House	2,717	0	0	69	194	241	386	369	359	313	248	307	129	60	28	9	5	0
	100%	0%	0%	3%	7%	9%	14%	14%	13%	12%	9%	11%	5%	2%	1%	0%	0%	0%
Total Other Facilities	3,598	4	6	114	266	304	481	478	457	407	327	427	183	85	35	12	11	1
	100%	0%	0%	3%	7%	8%	13%	13%	13%	11%	9%	12%	5%	2%	1%	0%	0%	0%

YOUTH COMPLEX

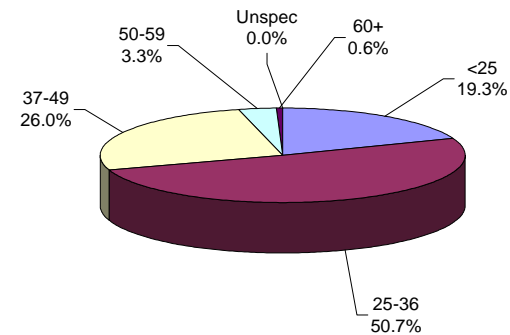


The median age for the youth complex is 23 years.

Eighty-two percent (82%) of all youth complex inmates are between the ages of 21 and 30.

Seventy-two percent (72%) are less than 25 years of age.

OFFENDERS IN OTHER FACILITIES



The median age for offenders in 'other facilities' is 31 years.

The median age for offenders housed in county jail is 32 years, while those offenders on electronic monitoring/ home confinement is 28 years. Offenders in halfway houses have a median age of 31 years.