

NEW JERSEY DEPARTMENT OF CORRECTIONS

**Susan Maurer, Acting Commissioner**



# **OFFENDER CHARACTERISTICS REPORT**

*ON JANUARY 8, 2001*

**Policy Analysis and Planning**

November 15, 2001

## Introduction

*This report has been developed to provide information regarding offender characteristics in each correctional complex, major institution and satellite housing unit under the jurisdiction of the New Jersey Department of Corrections on January 8, 2001. The selected characteristics compiled in this report are Base Offense at Admission, total Term at Admission, Ethnicity, Age, County of Commitment and Mandatory Minimum Term.*

*The Prison Complex includes the New Jersey State Prison, Central Reception and Assignment Facility, East Jersey State Prison, Bayside State prison, Riverfront State Prison, Mid-State, Southern State, Northern State Prison, South Woods, Edna Mahan Correctional Facility for Women and the Adult Diagnostic and Treatment Center (ADTC is a facility for adult male sex offenders).*

*NOTE: In our data tables we provide separate subtotals for ADTC and Edna Mahan Correctional Facility for Women due to the interest in these unique populations. The remainder of the Prison Complex is labeled "Prison Males".*

*The Youth Correctional Complex consists of the Garden State Youth Correctional Facility, the Albert C. Wagner Youth Correctional Facility and the Mountainview Youth Correctional Facility.*

*"Offenders in Other Facilities" include state-sentenced inmates housed in county jails, Halfway Houses, the Central Medical Unit (St. Francis Hospital) and those assigned to Electronic Monitoring/Home Confinement.*

*"Not Coded" are records for offenders in the correctional system for whom admission characteristics data have not been entered into the computerized information system as of January 8, 2001.*

## HIGHLIGHTS

- *Forty percent (40%) of all New Jersey Department of Corrections residents were committed for crimes against persons which include Homicide, Sexual Assault, Aggravated/Simple Assault, Assault, Robbery, Kidnapping, Other Sex Offenses and Other Person Offenses.*
- *Thirty-four percent (34%) of all Department of Corrections residents have been committed for narcotics law violations, including possession, sale and distribution. Over 90% of all narcotics law violations are sale/distribution offenses.*
- *The median term for Department of Corrections residents is six years.*
- *Thirty-three percent (33%) of all New Jersey Department of Corrections residents were committed with maximum sentences of 10 years or more. Of the total, four percent (4%) are serving Life Sentences and 15 offenders are under Capital Sentence.*
- *Fifty-seven percent (57%) of New Jersey Department of Corrections residents housed in the State System have sentences which include parole ineligibility terms.*
- *Forty-five percent (45%) of all residents in the New Jersey Department of Corrections are 30 years of age or younger. The median age for inmates in our adult facilities is 32.*
- *Sixty-three percent (63%) of New Jersey Department of Corrections residents are Black, while 19% are White and 18% are Hispanic.*
- *Of the 21 New Jersey counties, ten (Atlantic, Bergen, Camden, Essex, Hudson, Mercer, Middlesex, Monmouth, Passaic and Union) account for 83% of Total Department of Corrections Residents. Essex County is the highest contributor with 18%.*

## NOTES

- **DUE TO SOFTWARE AND ROUNDING, WORKSHEET ROW TOTALS DO NOT ALWAYS EQUAL 100 PERCENT.**
- **PIE CHART PERCENTAGES ALWAYS EQUAL 100%.**
- **PIE CHART PERCENTAGES MAY DIFFER SLIGHTLY FROM WORKSHEET PERCENTAGES.**
- **ACCOMPANYING NARRATIVES ALWAYS REFLECT PIE CHART PERCENTAGES.**

## TABLE OF CONTENTS

<u>REPORT NAME</u>	<u>PAGE</u>
<i>OFFENDERS IN NEW JERSEY CORRECTIONAL INSTITUTIONS BY BASE OFFENSE</i>	<i>1</i>
<i>Prison Complex Offenders</i>	<i>2-4</i>
<i>Youth Complex Offenders</i>	<i>5</i>
<i>Offenders in Other Facilities</i>	<i>6</i>
<i>OFFENDERS IN NEW JERSEY CORRECTIONAL INSTITUTIONS BY TOTAL TERM AT ADMISSION</i>	<i>7</i>
<i>Prison Complex Offenders</i>	<i>8-10</i>
<i>Youth Complex Offenders</i>	<i>11</i>
<i>Offenders in Other Facilities</i>	<i>12</i>
<i>OFFENDERS IN NEW JERSEY CORRECTIONAL INSTITUTIONS BY MANDATORY MINIMUM TERM</i>	<i>13</i>
<i>Prison Complex Offenders</i>	<i>14-16</i>
<i>Youth Complex Offenders</i>	<i>17</i>
<i>Offenders in Other Facilities</i>	<i>18</i>
<i>OFFENDERS IN NEW JERSEY CORRECTIONAL INSTITUTIONS BY AGE</i>	<i>19</i>
<i>Prison Complex Offenders</i>	<i>20-22</i>
<i>Youth Complex Offenders</i>	<i>23</i>
<i>Offenders in Other Facilities</i>	<i>24</i>
<i>OFFENDERS IN NEW JERSEY CORRECTIONAL INSTITUTIONS BY ETHNIC IDENTIFICATION</i>	<i>25</i>
<i>Prison Complex Offenders</i>	<i>26-28</i>
<i>Youth Complex Offenders</i>	<i>29</i>
<i>Offenders in Other Facilities</i>	<i>30</i>
<i>OFFENDERS IN NEW JERSEY CORRECTIONAL INSTITUTIONS BY COUNTY OF COMMITMENT</i>	<i>31</i>
<i>Prison Complex Offenders</i>	<i>32-36</i>
<i>Youth Complex Offenders</i>	<i>37</i>
<i>Offenders in Other Facilities</i>	<i>37</i>

TOTAL RESIDENTS IN NEW JERSEY STATE CORRECTIONAL INSTITUTIONS AND SATELLITES ON JANUARY 8,  
2001

<b>TOTAL RESIDENTS</b>			<b>28,622</b>
<b>PRISON COMPLEX</b>	<b>18,308</b>		<b>4622</b>
<b>ADTC</b>	<b>637</b>	<b>GARDEN STATE TOTAL</b>	<b>1793</b>
Bayside – Main	1343	Mountainview – Main	1171
Bayside – Farm	703	Mountainview – Stokes	111
Bayside – Ancora	345	<b>MOUNTAINVIEW TOTAL</b>	<b>1282</b>
<b>BAYSIDE TOTAL</b>	<b>2391</b>		
		Wagner – Main	1224
CRAF – Jones Farms	292	Wagner – Ad Seg	189
CRAF – Reception	833	Wagner – Adult Boot Camp	134
<b>CRAF TOTAL</b>	<b>1125</b>	<b>WAGNER TOTAL</b>	<b>1547</b>
		<b>OTHER FACILITIES</b>	<b>5692</b>
East Jersey – Main	1281	Central Medical	19
East Jersey – Camp	139	Halfway Houses	2601
East Jersey – Marlboro	133	County Jail	2936
East Jersey – Ad Seg	356	Electronic Monitoring (EM)	136
<b>EAST JERSEY TOTAL</b>	<b>1909</b>		
<b>EDNA MAHAN CORR FACILITY –</b>	<b>1075</b>		
<b>MID-STATE TOTAL</b>	<b>609</b>		
NJ State Prison – Ad Seg Female	27		
NJ State Prison – Main	1777		
<b>NJ STATE PRISON TOTAL</b>	<b>1804</b>		
Northern State – Main	2292		
Northern State – Ad Seg Male	359		
<b>NORTHERN STATE TOTAL</b>	<b>2651</b>		
<b>RIVERFRONT TOTAL</b>	<b>1144</b>		
<b>SOUTHERN STATE TOTAL</b>	<b>1640</b>		
<b>SOUTH WOODS TOTAL</b>	<b>3323</b>		

**OFFENDERS IN NEW JERSEY CORRECTIONAL INSTITUTIONS  
ON JANUARY 8, 2001, BY BASE OFFENSE**

In these tabulations, the base offense is that which is the most serious offense at the time of admission. These figures reflect base or controlling offenses at admissions only, and do not include any offenses in addition to the base offense in the case of multiple sentences at admission. Additional sentences imposed following initial admission to the state correctional system are not included in this data.

- Violent offenses include homicide, sexual assault, aggravated and simple assault, robbery, kidnapping, other sex offenses and other person offenses (i.e. terroristic threats, coercion, larceny from a person, death by auto and negligent manslaughter).
- Property offenses include burglary, arson, theft, forgery, embezzlement, and receiving/possessing stolen property.
- Public policy offenses include racketeering, gambling, corruption, perjury, escape, bail jumping, juvenile and family related offenses and conspiracy.
- Weapons offenses include weapon possession and operation.
- Drug violations include distribution, manufacture, possession and use of drugs. Virtually all drug offenses are for sale and distribution rather than for mere possession.

**OFFENDERS IN CORRECTIONAL INSTITUTIONS ON JANUARY 8, 2001, BY BASE OFFENSE**

Base Offense	Total		Prison Males		Youth Complex		ADTC		Edna Mahan		Other Facilities	
	#	%	#	%	#	%	#	%	#	%	#	%
TOTAL OFFENDERS	28,622	100%	16,596	100%	4,622	100%	637	100%	1,075	100%	5,692	100%
Violent Offenses	11,513	40%	8001	48%	1563	34%	606	95%	343	32%	1000	18%
Property Offenses	3,752	13%	2198	13%	473	10%	1	0%	175	16%	905	16%
Miscellaneous	1,311	5%	761	5%	237	5%	13	2%	50	5%	250	4%
Weapons	879	3%	482	3%	197	4%	0	0%	12	1%	188	3%
Drugs	9,683	34%	4592	28%	2002	43%	2	0%	429	40%	2658	47%
Not Coded	1,484	5%	562	3%	150	3%	15	2%	66	6%	691	12%

- Inmates with violent offenses comprise 48% of the prison complex, 34% of the youth complex, 95% of ADTC, 32% of Edna Mahan, and 18% of other adult facilities. The department-wide percentage of violent offenders (40%) represents the lowest percentage of such offenders in the department's history.

### Prison Complex Offenders on January 8, 2001, By Base Offense

Institution	Total	Violent Offenses	Homicide	Sexual Assault	Assault	Robbery	Kidnap	Other Sex	Other Person	Property	Public Policy	Weapons	Drugs	Not Coded
<b>Bayside</b>	1,343	435	90	43	112	166	8	1	15	245	77	42	507	37
<b>Main</b>	100%	41%	11%	0%	9%	18%	1%	0%	2%	19%	4%	5%	27%	3%
<b>Bayside</b>	703	290	74	0	66	130	6	0	14	134	30	34	191	24
<b>Farm</b>	100%	41%	11%	0%	9%	18%	1%	0%	2%	19%	4%	5%	27%	3%
<b>Bayside</b>	345	21	0	0	4	15	0	0	2	102	14	16	179	13
<b>Ancora</b>	100%	6%	0%	0%	1%	4%	0%	0%	1%	30%	4%	5%	52%	4%
<b>Bayside Total</b>	2,391	746	164	43	182	311	14	1	31	481	121	92	877	74
	100%	31%	7%	2%	8%	13%	1%	0%	1%	20%	5%	4%	37%	3%
<b>CRAF</b>	292	2	0	0	0	2	0	0	0	76	7	2	193	12
<b>Jones Farm</b>	100%	1%	0%	0%	0%	1%	0%	0%	0%	26%	2%	1%	66%	4%
<b>CRAF</b>	833	189	14	29	39	97	1	2	7	118	43	21	372	90
<b>Reception</b>	100%	23%	2%	3%	5%	12%	0%	0%	1%	14%	5%	3%	45%	11%
<b>CRAF Total</b>	1,125	191	14	29	39	99	1	2	7	194	50	23	565	102
	100%	17%	1%	3%	3%	9%	0%	0%	1%	17%	4%	2%	50%	9%
<b>East Jersey</b>	1,281	987	425	144	74	296	39	6	3	58	39	20	151	26
<b>Main</b>	100%	77%	33%	11%	6%	23%	3%	0%	0%	5%	3%	2%	12%	2%
<b>East Jersey</b>	139	70	0	0	23	40	1	0	6	15	6	5	38	5
<b>Camp</b>	100%	50%	0%	0%	17%	29%	1%	0%	4%	11%	4%	4%	27%	4%
<b>East Jersey</b>	133	63	0	0	19	40	0	0	4	21	5	10	29	5
<b>Marlboro</b>	100%	47%	0%	0%	14%	30%	0%	0%	3%	16%	4%	8%	22%	4%
<b>East Jersey</b>	356	195	45	26	31	86	3	0	4	58	17	12	68	6
<b>Ad Seg</b>	100%	55%	13%	7%	9%	24%	1%	0%	1%	16%	5%	3%	19%	2%
<b>East Jersey Total</b>	1,909	1315	470	170	147	462	43	6	17	152	67	47	286	42
	100%	69%	25%	9%	8%	24%	2%	0%	1%	8%	4%	2%	15%	2%



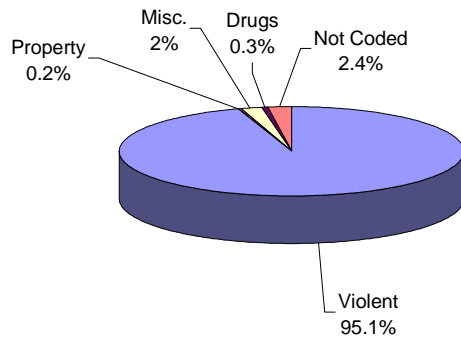
**Prison Complex Offenders on January 8, 2001, By Base Offense**

Institution	Total	Violent Offenses	Homicide	Sexual Assault	Assault	Robbery	Kidnap	Other Sex	Other Person	Property	Public Policy	Weapons	Drugs	Not Coded
Midstate	609 100%	246 40%	11 2%	132 22%	28 5%	40 7%	2 0%	19 3%	14 2%	88 14%	62 10%	21 3%	175 29%	17 3%
NJ State Prison Ad Seg Female	27 100%	12 1%	5 0%	0 0%	2 0%	5 0%	0 0%	0 0%	0 0%	3 0%	3 0%	1 0%	4 0%	4 0%
NJ State Prison Main	1,777 100%	1486 82%	963 53%	111 6%	84 5%	269 15%	52 3%	2 0%	5 0%	76 4%	24 1%	21 1%	134 7%	36 2%
NJ State Prison Total	1,804 100%	1498 83%	968 54%	111 6%	86 5%	274 15%	52 3%	2 0%	5 0%	79 4%	27 1%	22 1%	138 8%	40 2%
Northern Main	2,292 100%	1211 53%	268 12%	157 7%	211 9%	521 23%	30 1%	5 0%	19 1%	298 13%	87 4%	75 3%	553 24%	68 3%
Northern Ad Seg Male	359 100%	180 50%	32 9%	10 3%	42 12%	88 25%	3 1%	0 0%	5 1%	48 13%	21 6%	16 4%	83 23%	11 3%
Northern Total	2651 100%	1391 52%	300 11%	167 6%	253 10%	609 23%	33 1%	5 0%	24 1%	346 13%	108 4%	91 3%	636 24%	79 3%
Riverfront	1,144 100%	568 50%	89 8%	162 14%	87 8%	197 17%	14 1%	6 1%	13 1%	141 12%	70 6%	32 3%	310 27%	23 2%
Southern	1,640 100%	611 37%	100 6%	83 5%	125 8%	271 17%	13 1%	5 0%	14 1%	225 14%	81 5%	57 3%	600 37%	66 4%
South Woods	3,323 100%	1435 43%	224 7%	201 6%	282 8%	635 19%	26 1%	14 0%	53 2%	492 15%	175 5%	97 3%	1005 30%	119 4%
<b>SUBTOTAL PRISON MALES</b>	<b>16,596 100%</b>	<b>8001 48%</b>	<b>2340 14%</b>	<b>1098 7%</b>	<b>1229 7%</b>	<b>2898 17%</b>	<b>198 1%</b>	<b>60 0%</b>	<b>178 1%</b>	<b>2198 13%</b>	<b>761 5%</b>	<b>482 3%</b>	<b>4592 28%</b>	<b>562 3%</b>

## Prison Complex Offenders on January 8, 2001, By Base Offense

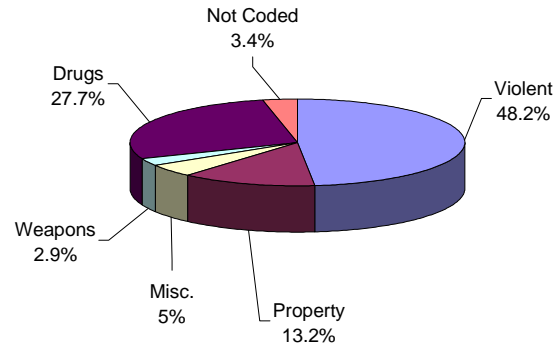
Institution	Total	Violent Offenses	Homicide	Sexual Assault	Assault	Robbery	Kidnap	Other Sex	Other Person	Property	Public Policy	Weapons	Drugs	Not Coded
ADTC	637	606	3	574	1	4	7	17	0	1	13	0	2	15
	100%	95%	0%	90%	0%	1%	1%	3%	0%	0%	2%	0%	0%	2%
<b>SUBTOTAL</b>	<b>17,233</b>	<b>8607</b>	<b>2343</b>	<b>1672</b>	<b>1230</b>	<b>2902</b>	<b>205</b>	<b>77</b>	<b>178</b>	<b>2199</b>	<b>774</b>	<b>482</b>	<b>4594</b>	<b>577</b>
	<b>100%</b>	<b>50%</b>	<b>14%</b>	<b>10%</b>	<b>7%</b>	<b>17%</b>	<b>1%</b>	<b>0%</b>	<b>1%</b>	<b>13%</b>	<b>4%</b>	<b>3%</b>	<b>27%</b>	<b>3%</b>
Mahan - Female Prison	1,075	343	135	8	86	107	6	0	1	175	50	12	429	66
	100%	32%	13%	1%	8%	10%	1%	0%	0%	16%	5%	1%	40%	6%
<b>Total Prison Complex</b>	<b>18,308</b>	<b>8950</b>	<b>2478</b>	<b>1680</b>	<b>1316</b>	<b>3009</b>	<b>211</b>	<b>77</b>	<b>179</b>	<b>2374</b>	<b>824</b>	<b>494</b>	<b>5023</b>	<b>643</b>
	<b>100%</b>	<b>49%</b>	<b>14%</b>	<b>9%</b>	<b>7%</b>	<b>16%</b>	<b>1%</b>	<b>0%</b>	<b>1%</b>	<b>13%</b>	<b>5%</b>	<b>3%</b>	<b>27%</b>	<b>4%</b>

**ADTC**



Virtually all offenders at ADTC were committed for violent offenses

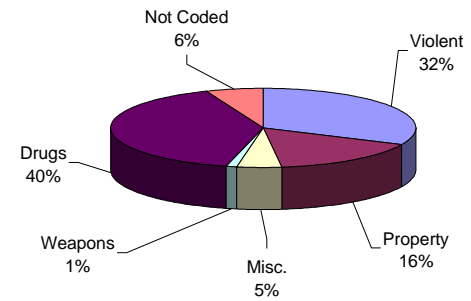
**PRISON MALES**



Forty-eight percent (48%) of male offenders in the prison complex were convicted of a violent offense (ADTC excluded).

Twenty-eight percent (28%) of all male prison complex offenders were convicted of drug offenses.

**FEMALE FACILITIES**



Drug offenses are the most frequent commitment offense at Edna Mahan (40%).

Only 32% of female residents were committed for violent offenses compared with 48% for male prison complex residents.

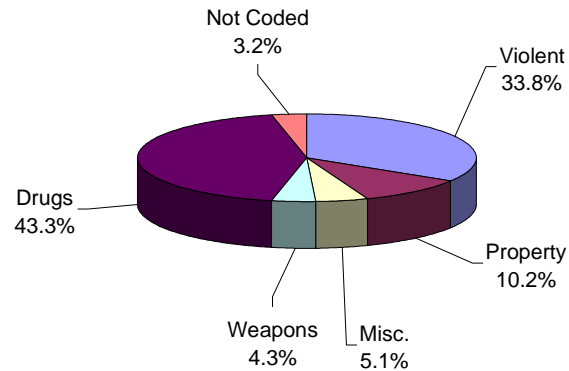
### Youth Complex Offenders on January 8, 2001, By Base Offense

Institution	Total	Violent Offenses	Homicide	Sexual Assault	Assault	Robbery	Kidnap	Other Sex	Other Person	Property	Misc.	Weapons	Drugs	Not Coded
<b>Garden State</b>	1,793	699	175	86	137	279	6	4	12	173	88	70	692	71
	100%	39%	10%	5%	8%	16%	0%	0%	1%	10%	5%	4%	39%	4%
<b>Mountainview</b>	1,171	271	17	4	98	141	1	1	9	153	58	63	593	33
<b>Main</b>	100%	23%	1%	0%	8%	12%	0%	0%	1%	13%	5%	5%	51%	3%
<b>Mountainview</b>	111	5	0	0	1	4	0	0	0	16	4	3	79	4
<b>Stokes</b>	100%	5%	0%	0%	1%	4%	0%	0%	0%	14%	4%	3%	71%	4%
<b>Mountainview</b>	1,282	276	17	4	99	145	1	1	9	169	62	66	672	37
<b>Total</b>	100%	22%	1%	0%	8%	11%	0%	0%	1%	13%	5%	5%	52%	3%
<b>Wagner</b>	1,224	506	83	44	140	230	4	1	4	102	67	53	459	37
<b>Main</b>	100%	41%	7%	4%	11%	19%	0%	0%	0%	8%	5%	4%	38%	3%
<b>Wagner</b>	189	79	10	4	28	35	2	0	0	16	17	6	67	4
<b>Ad Seg</b>	100%	42%	5%	2%	15%	19%	1%	0%	0%	8%	9%	3%	35%	2%
<b>Wagner</b>	134	3	0	0	1	2	0	0	0	13	3	2	112	1
<b>Adult Boot Camp</b>	100%	2%	0%	0%	1%	1%	0%	0%	0%	10%	2%	1%	84%	1%
<b>Wagner</b>	1,547	588	93	48	169	267	6	1	4	131	87	61	638	42
<b>Total</b>	100%	38%	6%	3%	11%	17%	0%	0%	0%	8%	6%	4%	41%	3%
<b>Total Youth</b>	4,622	1563	285	138	405	691	13	6	25	473	237	197	2,002	150
	100%	34%	6%	3%	9%	15%	0%	0%	1%	10%	5%	4%	43%	3%

### Offenders In Other Facilities on January 8, 2001, By Base Offense

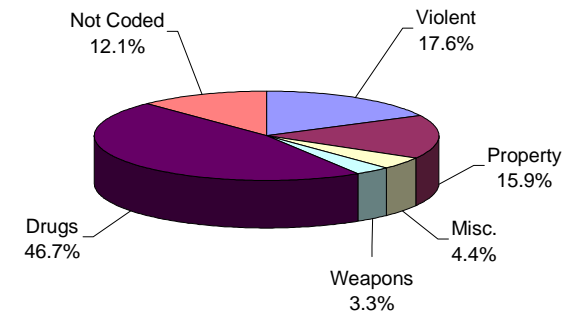
Institution	Total	Violent Offenses	Homicide	Sexual Assault	Assault	Robbery	Kidnap	Other Sex	Other Person	Property	Misc.	Weapons	Drugs	Not Coded
Central Medical	19	9	4	1	1	0	1	0	2	3	0	0	4	3
	100%	47%	21%	5%	5%	0%	5%	0%	11%	16%	0%	0%	21%	16%
County Jail	2,936	424	23	30	121	222	2	2	24	535	142	70	1155	610
	100%	14%	1%	1%	4%	8%	0%	0%	1%	18%	5%	2%	39%	21%
EM/HC	136	14	0	0	4	10	0	0	0	21	7	0	90	4
	100%	10%	0%	0%	3%	7%	0%	0%	0%	15%	5%	0%	66%	3%
Halfway House	2,601	553	92	0	145	297	7	0	12	346	101	118	1409	74
	100%	21%	4%	0%	6%	11%	0%	0%	0%	13%	4%	5%	54%	3%
<b>Total Other Facilities</b>	<b>5,692</b>	<b>1000</b>	<b>119</b>	<b>31</b>	<b>271</b>	<b>529</b>	<b>10</b>	<b>2</b>	<b>38</b>	<b>905</b>	<b>250</b>	<b>188</b>	<b>2658</b>	<b>691</b>
	100%	18%	2%	1%	5%	9%	0%	0%	1%	16%	4%	3%	47%	12%

#### YOUTH COMPLEX



Forty-three percent (43%) of offenders housed in the youth complex were incarcerated for drug offenses.

#### OFFENDERS IN OTHER FACILITIES



Offenders housed in county jails and halfway houses are less serious offenders than those found in the prison complex facilities (i.e. 18% violent offenses vs. 47% violent offenses in prison complex).

**OFFENDERS IN NEW JERSEY CORRECTIONAL INSTITUTIONS  
ON JANUARY 8, 2001, BY TOTAL TERM AT ADMISSION**

Total term at admission is the total maximum term imposed for each offender at the time of commitment from the community or from parole. This includes the aggregate term for those admitted with multiple sentences. Additional sentences received following initial admission are not reflected or included in the data.

**OFFENDERS IN NEW JERSEY CORRECTIONAL INSTITUTIONS ON JANUARY 8, 2001, BY TOTAL TERM AT ADMISSION**

Total Term	Total		Prison Males		Youth Complex		ADTC		Edna Mahan		Other Facilities	
	#	%	#	%	#	%	#	%	#	%	#	%
TOTAL OFFENDERS	28,622	100%	16,596	100%	4,622	100%	637	100%	1,075	100%	5,692	100%
1-2 Years	410	1%	187	1%	82	2%	1	0%	37	3%	103	2%
3 Years	3,726	13%	1545	9%	897	19%	3	0%	218	20%	1063	19%
4 Years	4,041	14%	1961	12%	745	16%	32	5%	213	20%	1090	19%
5 Years	5,222	18%	2727	16%	1003	22%	58	9%	190	18%	1244	22%
6 Years	885	3%	452	3%	212	5%	18	3%	26	2%	177	3%
7 Years	2,180	8%	1180	7%	453	10%	56	9%	70	7%	421	7%
8-9 Years	1,698	6%	1048	6%	283	6%	41	6%	42	4%	284	5%
10 Years	2,195	8%	1429	9%	322	7%	100	16%	50	5%	294	5%
11-14 Years	1,007	4%	659	4%	154	3%	46	7%	26	2%	122	2%
15 Years	1,150	4%	829	5%	105	2%	61	10%	25	2%	130	2%
16-20 Years	1,654	6%	1258	8%	152	3%	91	14%	44	4%	109	2%
20+ Years	2,382	8%	2005	12%	140	3%	115	18%	60	6%	62	1%
Life	1,112	4%	1049	6%	23	0%	3	0%	22	2%	15	0%
Capital	15	0%	15	0%	0	0%	0	0%	0	0%	0	0%
Not Coded	945	3%	252	2%	51	1%	12	2%	52	5%	578	10%

Among New Jersey Adult Correctional Offenders:

- The median term for adult offenders is 6 years.
- Forty-seven percent (47%) are serving terms of 1 -5 years.
- Seventeen percent (17%) are serving terms of 6-9 years.
- Thirty-three percent (33%) are serving terms of 10 years or more, which includes 1,127 offenders serving life or capital sentences.

### Prison Complex Offenders on January 8, 2001, By Total Term At Admission

<i>Institution</i>	Total	1-2 Years	3 Years	4 Years	5 Years	6 Years	7 Years	8-9 Years	10 Years	11-14 Years	15 Years	16-20 Years	20+ Years	Life	Capital	Not Coded
<b>Bayside</b>	1,343	18	156	204	270	58	133	92	115	63	61	60	67	27	0	19
<b>Main</b>	100%	1%	12%	15%	20%	4%	10%	7%	9%	5%	5%	4%	5%	2%	0%	1%
<b>Bayside</b>	703	14	64	88	152	20	53	44	58	17	39	75	54	17	0	8
<b>Farm</b>	100%	2%	9%	13%	22%	3%	8%	6%	8%	2%	6%	11%	8%	2%	0%	1%
<b>Bayside</b>	345	6	83	108	72	12	22	16	13	4	1	2	1	0	0	5
<b>Ancora</b>	100%	2%	24%	31%	21%	3%	6%	5%	4%	1%	0%	1%	0%	0%	0%	1%
<b>Bayside Total</b>	2,391	38	303	400	494	90	208	152	186	84	101	137	122	44	0	32
	100%	2%	13%	17%	21%	4%	9%	6%	8%	4%	4%	6%	5%	2%	0%	1%
<b>CRAF</b>	292	6	110	86	67	8	5	0	1	0	0	0	0	0	0	9
<b>Jones Farm</b>	100%	2%	38%	29%	23%	3%	2%	0%	0%	0%	0%	0%	0%	0%	0%	3%
<b>CRAF</b>	833	13	161	169	167	32	48	46	54	17	15	21	7	3	0	80
<b>Reception</b>	100%	2%	19%	20%	20%	4%	6%	6%	6%	2%	2%	3%	1%	0%	0%	10%
<b>CRAF Total</b>	1,125	19	271	255	234	40	53	46	55	17	15	21	7	3	0	89
	100%	2%	24%	23%	21%	4%	5%	4%	5%	2%	1%	2%	1%	0%	0%	8%
<b>East Jersey</b>	1,281	6	28	36	73	16	44	50	76	56	85	172	466	167	0	6
<b>Main</b>	100%	0%	2%	3%	6%	1%	3%	4%	6%	4%	7%	13%	36%	13%	0%	0%
<b>East Jersey</b>	139	3	12	18	23	2	15	7	10	4	9	20	14	0	0	2
<b>Camp</b>	100%	2%	9%	13%	17%	1%	11%	5%	7%	3%	6%	14%	10%	0%	0%	1%
<b>East Jersey</b>	133	1	21	13	30	0	7	11	10	8	9	17	5	0	0	1
<b>Marlboro</b>	100%	1%	16%	10%	23%	0%	5%	8%	8%	6%	7%	13%	4%	0%	0%	1%
<b>East Jersey</b>	356	5	38	57	48	2	24	29	29	17	17	29	43	17	0	1
<b>Ad Seg</b>	100%	1%	11%	16%	13%	1%	7%	8%	8%	5%	5%	8%	12%	5%	0%	0%
<b>East Jersey</b>	1,909	15	99	124	174	20	90	97	125	85	120	238	528	184	0	10
<b>Total</b>	100%	1%	5%	6%	9%	1%	5%	5%	7%	4%	6%	12%	28%	10%	0%	1%

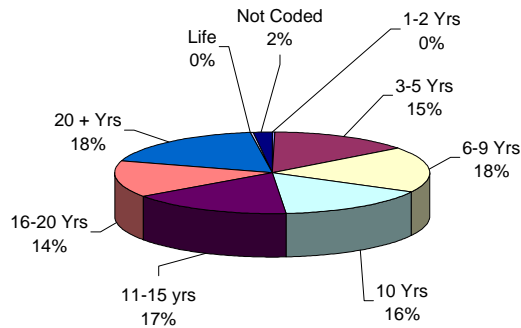
### Prison Complex Offenders on January 8, 2001, By Total Term At Admission

Institution	Total	1-2 Years	3 Years	4 Years	5 Years	6 Years	7 Years	8-9 Years	10 Years	11-14 Years	15 Years	16-20 Years	20+ Years	Life	Capital	Not Coded
Midstate	609 100%	17 3%	102 17%	121 20%	159 26%	23 4%	63 10%	34 6%	42 7%	12 2%	13 2%	7 1%	9 1%	0 0%	0 0%	7 1%
NJ State Prison Ad Seg Female	27 100%	1 0%	3 0%	7 0%	0 0%	0 0%	1 0%	4 0%	3 0%	0 0%	0 0%	0 0%	4 0%	0 0%	0 0%	4 0%
NJ State Prison Main	1,777 100%	8 0%	41 2%	45 2%	82 5%	13 1%	29 2%	26 1%	59 3%	33 2%	46 3%	69 4%	618 34%	671 37%	15 1%	22 1%
NJ State Prison Total	1,804 100%	9 0%	44 2%	52 3%	82 5%	13 1%	30 2%	30 2%	62 3%	33 2%	46 3%	69 4%	622 34%	671 37%	15 1%	26 1%
Northern Main	2,292 100%	21 1%	160 7%	233 10%	333 15%	59 3%	180 8%	175 8%	257 11%	118 5%	144 6%	263 11%	272 12%	61 3%	0 0%	16 1%
Northern Ad Seg Male	359 100%	6 2%	38 11%	41 11%	62 17%	8 2%	35 10%	19 5%	38 11%	12 3%	25 7%	35 10%	28 8%	9 3%	0 0%	3 1%
Northern Total	2,651 100%	27 1%	198 7%	274 10%	395 15%	67 3%	215 8%	194 7%	295 11%	130 5%	169 6%	298 11%	300 11%	70 3%	0 0%	19 1%
Riverfront	1,144 100%	10 1%	69 6%	110 10%	191 17%	45 4%	87 8%	89 8%	123 11%	73 6%	86 8%	118 10%	116 10%	22 2%	0 0%	5 0%
Southern	1,640 100%	12 1%	156 10%	193 12%	322 20%	58 4%	140 9%	164 10%	189 12%	75 5%	93 6%	120 7%	82 5%	12 1%	0 0%	24 1%
South Woods	3,323 100%	40 1%	303 9%	432 13%	676 20%	96 3%	294 9%	242 7%	352 11%	150 5%	186 6%	250 8%	219 7%	43 1%	0 0%	40 1%
<b>SUBTOTAL PRISON MALES</b>	<b>16,596 100%</b>	<b>187 1%</b>	<b>1,545 9%</b>	<b>1,961 12%</b>	<b>2,727 16%</b>	<b>452 3%</b>	<b>1,180 7%</b>	<b>1,048 6%</b>	<b>1,429 9%</b>	<b>659 4%</b>	<b>829 5%</b>	<b>1,258 8%</b>	<b>2,005 12%</b>	<b>1,049 6%</b>	<b>15 0%</b>	<b>252 2%</b>

## Prison Complex Offenders on January 8, 2001, By Total Term At Admission

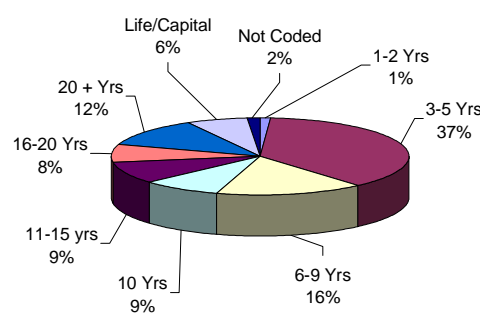
Institution	Total	1-2 Years	3 Years	4 Years	5 Years	6 Years	7 Years	8-9 Years	10 Years	11-14 Years	15 Years	16-20 Years	20+ Years	Life	Capital	Not Coded
ADTC	637	1	3	32	58	18	56	41	100	46	61	91	115	3	0	12
	100%	0%	0%	5%	9%	3%	9%	6%	16%	7%	10%	14%	18%	0%	0%	2%
<b>SUBTOTAL</b>	<b>17,233</b>	<b>188</b>	<b>1548</b>	<b>1993</b>	<b>2785</b>	<b>470</b>	<b>1236</b>	<b>1089</b>	<b>1529</b>	<b>705</b>	<b>890</b>	<b>1349</b>	<b>2120</b>	<b>1052</b>	<b>15</b>	<b>264</b>
	100%	1%	9%	12%	16%	3%	7%	6%	9%	4%	5%	8%	12%	6%	0%	2%
Mahan - Female Prison	1,075	37	218	213	190	26	70	42	50	26	25	44	60	22	0	52
	100%	3%	20%	20%	18%	2%	7%	4%	5%	2%	2%	4%	6%	2%	0%	5%
<b>Total Prison Complex</b>	<b>18,308</b>	<b>225</b>	<b>1766</b>	<b>2206</b>	<b>2975</b>	<b>496</b>	<b>1306</b>	<b>1131</b>	<b>1579</b>	<b>731</b>	<b>915</b>	<b>1393</b>	<b>2180</b>	<b>1074</b>	<b>15</b>	<b>316</b>
	100%	1%	10%	12%	16%	3%	7%	6%	9%	4%	5%	8%	12%	6%	0%	2%

**ADTC**



The median term at ADTC is 12 years.

**PRISON MALES**

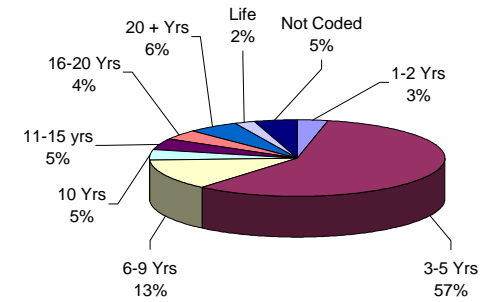


The median term for prison males is 8 years.

Twenty-six percent (26%) of all prison males are serving sentences of 16 years or more.

Seventy-seven percent (77%) of all offenders at New Jersey State Prison are serving sentences of 16 years or more, with 671 life sentences and 15 capital cases.

**FEMALE FACILITIES**



The median term at Edna Mahan is 5 years.

Sixty-one percent (61%) of the female offenders at Edna Mahan Correctional Facility for Women are serving sentences of 5 years or less.



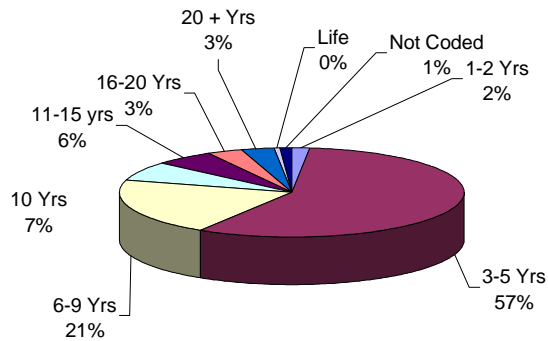
### Youth Complex Offenders on January 9, 1998, By Total Term At Admission

Institution	Total	1-2 Years	3 Years	4 Years	5 Years	6 Years	7 Years	8-9 Years	10 Years	11-14 Years	15 Years	16-20 Years	20+ Years	Life	Capital	Not Coded
<b>Garden State</b>	1,793 100%	44 2%	297 17%	254 14%	377 21%	89 5%	169 9%	106 6%	127 7%	52 3%	39 2%	70 4%	124 7%	23 1%	0 0%	22 1%
<b>Mountainview Main</b>	1,171 100%	28 2%	277 24%	238 20%	283 24%	47 4%	113 10%	72 6%	65 6%	13 1%	12 1%	8 1%	1 0%	0 0%	0 0%	14 1%
<b>Mountainview Stokes</b>	111 100%	1 1%	33 30%	24 22%	31 28%	3 3%	10 9%	5 5%	2 2%	0 0%	0 0%	0 0%	0 0%	0 0%	0 0%	2 2%
<b>Mountainview Total</b>	1282 100%	29 2%	310 24%	262 20%	314 24%	50 4%	123 10%	77 6%	67 5%	13 1%	12 1%	8 7%	1 1%	0 0%	0 0%	16 1%
<b>Wagner Main</b>	1,224 100%	8 1%	190 16%	165 13%	242 20%	64 5%	136 11%	85 7%	114 9%	75 6%	51 4%	68 6%	14 1%	0 0%	0 0%	12 1%
<b>Wagner Ad Seg</b>	189 100%	1 1%	37 20%	33 17%	38 20%	6 3%	22 12%	15 8%	13 7%	14 7%	3 2%	6 3%	1 1%	0 0%	0 0%	0 0%
<b>Wagner Adult Boot Camp</b>	134 100%	0 0%	63 47%	31 23%	32 24%	3 2%	3 2%	0 0%	1 1%	0 0%	0 0%	0 0%	0 0%	0 0%	0 0%	1 1%
<b>Wagner Total</b>	1,547 100%	9 1%	290 19%	229 15%	312 20%	73 5%	161 10%	100 6%	128 8%	89 6%	54 3%	74 5%	15 1%	0 0%	0 0%	13 1%
<b>Total Youth</b>	<b>4,622 100%</b>	<b>82 2%</b>	<b>897 19%</b>	<b>745 16%</b>	<b>1,003 22%</b>	<b>212 5%</b>	<b>453 10%</b>	<b>283 6%</b>	<b>322 7%</b>	<b>154 3%</b>	<b>105 2%</b>	<b>152 3%</b>	<b>140 3%</b>	<b>23 0%</b>	<b>0 0%</b>	<b>51 1%</b>

### Offenders In Other Facilities on January 9,1998, By Total Term At Admission

Institution	Total	1-2 Years	3 Years	4 Years	5 Years	6 Years	7 Years	8-9 Years	10 Years	11-14 Years	15 Years	16-20 Years	20+ Years	Life	Capital	Not Coded
Central Medical	19 100%	1 5%	1 5%	3 16%	3 16%	0 0%	1 5%	0 0%	1 5%	0 0%	2 11%	2 11%	3 16%	1 5%	0 0%	1 5%
County Jail	2,936 100%	77 3%	650 22%	616 21%	530 18%	71 2%	144 5%	102 3%	82 3%	32 1%	31 1%	30 1%	11 0%	2 0%	0 0%	558 19%
EM/HC	136 100%	2 1%	39 29%	31 23%	33 24%	5 4%	9 7%	7 5%	3 2%	4 3%	1 1%	0 0%	0 0%	0 0%	0 0%	2 1%
Halfway House	2,601 100%	23 1%	373 14%	440 17%	678 26%	101 4%	267 10%	175 7%	208 8%	86 3%	96 4%	77 3%	48 2%	12 0%	0 0%	17 1%
<b>Total Other Facilities</b>	<b>5,692 100%</b>	<b>103 2%</b>	<b>1063 19%</b>	<b>1090 19%</b>	<b>1244 22%</b>	<b>177 3%</b>	<b>421 7%</b>	<b>284 5%</b>	<b>294 5%</b>	<b>122 2%</b>	<b>130 2%</b>	<b>109 2%</b>	<b>62 1%</b>	<b>15 0%</b>	<b>0 0%</b>	<b>578 10%</b>

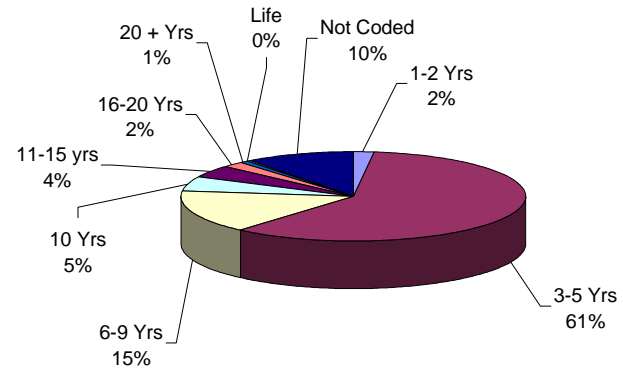
#### YOUTH COMPLEX



The median youth complex term is 5 years.

Twenty-three (23) youth complex offenders are serving life sentences.

#### OFFENDERS IN OTHER FACILITIES



The median term for offenders housed in 'other facilities' is 5 years.

Sixty-one percent (61%) of offenders housed in 'other facilities' are serving terms of 5 years or less.

**OFFENDERS IN NEW JERSEY CORRECTIONAL INSTITUTIONS  
ON JANUARY 8, 2001, BY MANDATORY MINIMUM TERM**

In New Jersey, since 1979, the courts have utilized mandatory minimum sentences. This means that an offender must serve the entire minimum sentence before being eligible for parole consideration. Mandatory minimum terms are not reduced by earned credits (commutation, minimum security or work).

**OFFENDERS IN CORRECTIONAL INSTITUTIONS ON JANUARY 8, 2001, BY MANDATORY MINIMUM TERM**

Mandatory Minimum Term	Total		Prison Males		Youth Complex		ADTC		Edna Mahan		Other Facilities	
	#	%	#	%	#	%	#	%	#	%	#	%
TOTAL OFFENDERS	16,403	100%	10,215	100%	2,810	100%	267	100%	464	100%	2,647	100%
<18 Months	1,485	9%	527	5%	482	17%	1	0%	71	15%	404	15%
18 Months	966	6%	426	4%	249	9%	0	0%	19	4%	272	10%
2 Years	2,519	15%	1368	13%	436	16%	2	1%	76	16%	637	24%
3 Years	2,994	18%	1628	16%	590	21%	8	3%	86	19%	682	26%
4 Years	1,332	8%	834	8%	260	9%	15	6%	37	8%	186	7%
5 Years	1,626	10%	1098	11%	233	8%	87	33%	30	6%	178	7%
6-9 Years	1,951	12%	1286	13%	331	12%	45	17%	59	13%	230	9%
10 Years	716	4%	572	6%	56	2%	47	18%	16	3%	25	1%
11-14 Years	536	3%	424	4%	67	2%	11	4%	17	4%	17	1%
15 Years	432	3%	361	4%	29	1%	27	10%	11	2%	4	0%
16-19 Years	224	1%	189	2%	20	1%	4	1%	5	1%	6	0%
20-24 Years	258	2%	234	2%	12	0%	7	3%	2	0%	3	0%
25-29 Years	238	1%	224	2%	3	0%	8	3%	3	1%	0	0%
30 Years	670	4%	609	6%	32	1%	3	1%	24	5%	2	0%
30+ Years	456	3%	435	4%	10	0%	2	1%	8	2%	1	0%

- Fifty- seven percent (57%) of all adult offenders have mandatory minimum terms (16,403 out of 28,622).
- The median mandatory minimum term is 3 years 6 months.
- Fourteen percent (14%) of those with mandatory minimum terms have mandatory minimum terms of 15 years or more.

**Prison Complex Offenders on January 8, 2001, By Mandatory Minimum Term**

Institution	Total	< 18 Months	18 Months	2 Years	3 Years	4 Years	5 Years	6-9 Years	10 Years	11-14 Years	15 Years	16-19 Years	20-24 Years	25-29 Years	30 Years	30+ Years
<b>Bayside</b>	763	51	42	149	201	80	88	82	24	16	14	5	3	4	2	2
<b>Main</b>	100%	7%	6%	20%	26%	10%	12%	11%	3%	2%	2%	1%	0%	1%	0%	0%
<b>Bayside Farm</b>	376	24	26	84	57	21	42	59	34	9	11	1	2	3	1	2
	100%	6%	7%	22%	15%	6%	11%	16%	9%	2%	3%	0%	1%	1%	0%	1%
<b>Bayside Ancora</b>	147	29	24	50	27	8	3	6	0	0	0	0	0	0	0	0
	100%	20%	16%	34%	18%	5%	2%	4%	0%	0%	0%	0%	0%	0%	0%	0%
<b>Bayside Total</b>	1,286	104	92	283	285	109	133	147	58	25	25	6	5	7	3	4
	100%	8%	7%	22%	22%	8%	10%	11%	5%	2%	2%	0%	0%	1%	0%	0%
<b>CRAF Jones Farm</b>	99	37	20	26	10	0	0	6	0	0	0	0	0	0	0	0
	100%	37%	20%	26%	10%	0%	0%	6%	0%	0%	0%	0%	0%	0%	0%	0%
<b>CRAF Reception</b>	376	83	40	66	75	32	29	36	4	5	2	2	0	0	1	1
	100%	22%	11%	18%	20%	9%	8%	10%	1%	1%	1%	1%	0%	0%	0%	0%
<b>CRAF Total</b>	475	120	60	92	85	32	29	42	4	5	2	2	0	0	1	1
	100%	25%	13%	19%	18%	7%	6%	9%	1%	1%	0%	0%	0%	0%	0%	0%
<b>East Jersey Main</b>	1,009	5	8	32	52	42	95	122	113	115	93	44	58	62	126	42
	100%	0%	1%	3%	5%	4%	9%	12%	11%	11%	9%	4%	6%	6%	12%	4%
<b>East Jersey Camp</b>	79	8	1	16	8	0	8	20	8	5	3	1	1	0	0	0
	100%	10%	1%	20%	10%	0%	10%	25%	10%	6%	4%	1%	1%	0%	0%	0%
<b>East Jersey Marlboro</b>	77	5	5	13	8	12	9	16	4	2	1	1	1	0	0	0
	100%	6%	6%	17%	10%	16%	12%	21%	5%	3%	1%	1%	1%	0%	0%	0%
<b>East Jersey Ad Seg</b>	206	13	9	28	20	23	18	24	17	10	10	4	6	2	16	6
	100%	6%	4%	14%	10%	11%	9%	12%	8%	5%	5%	2%	3%	1%	8%	3%
<b>East Jersey Total</b>	1,371	31	23	89	88	77	130	182	142	132	107	50	66	64	142	48
	100%	2%	2%	6%	6%	6%	9%	13%	10%	10%	8%	4%	5%	5%	10%	4%

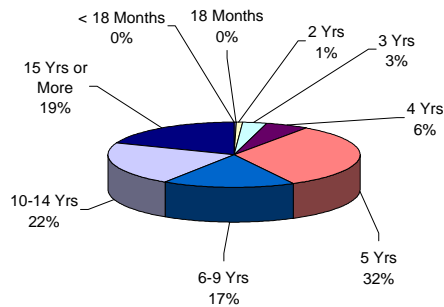
**Prison Complex Offenders on January 8, 2001, By Mandatory Minimum Term**

Institution	Total	< 18 Months	18 Months	2 Years	3 Years	4 Years	5 Years	6-9 Years	10 Years	11-14 Years	15 Years	16-19 Years	20-24 Years	25-29 Years	30 Years	30+ Years
Midstate	237 100%	32 14%	19 8%	63 27%	75 32%	18 8%	13 5%	13 5%	1 0%	1 0%	2 1%	0 0%	0 0%	0 0%	0 0%	0 0%
NJ State Prison Ad Seg Female	8 100%	0 0%	0 0%	1 0%	3 0%	0 0%	0 0%	1 0%	0 0%	1 0%	1 0%	0 0%	1 0%	0 0%	0 0%	0 0%
NJ State Prison Main	1,470 100%	12 1%	14 1%	37 3%	44 3%	33 2%	47 3%	66 4%	49 3%	41 3%	79 5%	56 4%	06 7%	124 8%	412 28%	350 24%
NJ State Prison Total	1,478 100%	12 1%	14 1%	38 3%	47 3%	33 2%	47 3%	67 5%	49 3%	42 3%	80 5%	56 4%	107 7%	124 8%	412 28%	350 24%
Northern Main	1,479 100%	52 4%	53 4%	189 13%	230 16%	149 10%	204 14%	265 18%	104 7%	85 6%	57 4%	34 2%	19 1%	12 1%	17 1%	9 1%
Northern Ad Seg Male	224 100%	11 5%	14 6%	30 13%	34 15%	21 9%	24 11%	38 17%	12 5%	13 6%	8 4%	4 2%	3 1%	0 0%	4 2%	8 4%
Northern Total	1,703 100%	63 4%	67 4%	219 13%	264 16%	170 10%	228 13%	303 18%	116 7%	98 6%	65 4%	38 2%	22 1%	12 1%	21 1%	17 1%
Riverfront	730 100%	28 4%	18 2%	87 12%	156 21%	72 10%	117 16%	120 16%	49 7%	28 4%	23 3%	5 1%	9 1%	8 1%	5 1%	5 1%
Southern	993 100%	44 4%	52 5%	156 16%	240 24%	124 12%	145 15%	130 13%	50 5%	20 2%	21 2%	4 0%	4 0%	1 0%	1 0%	1 0%
South Woods	1,942 100%	93 5%	81 4%	341 18%	388 20%	199 10%	256 13%	282 15%	103 5%	73 4%	36 2%	28 1%	21 1%	8 0%	24 1%	9 0%
<b>SUBTOTAL PRISON MALES</b>	<b>10,215 100%</b>	<b>527 5%</b>	<b>426 4%</b>	<b>1368 13%</b>	<b>1628 16%</b>	<b>834 8%</b>	<b>1098 11%</b>	<b>1286 13%</b>	<b>572 6%</b>	<b>424 4%</b>	<b>361 4%</b>	<b>189 2%</b>	<b>234 2%</b>	<b>224 2%</b>	<b>609 6%</b>	<b>435 4%</b>

## Prison Complex Offenders on January 8, 2001, By Mandatory Minimum Term

Institution	Total	< 18 Months	18 Months	2 Years	3 Years	4 Years	5 Years	6-9 Years	10 Years	11-14 Years	15 Years	16-19 Years	20-24 Years	25-29 Years	30 Years	30+ Years
ADTC	267 100%	1 0%	0 0%	2 1%	8 3%	15 6%	87 33%	45 17%	47 18%	11 4%	27 10%	4 1%	7 3%	8 3%	3 1%	2 1%
<b>Subtotal</b>	<b>10,482 100%</b>	<b>528 5%</b>	<b>426 4%</b>	<b>1,370 13%</b>	<b>1,636 16%</b>	<b>849 8%</b>	<b>1,185 11%</b>	<b>1,331 13%</b>	<b>619 6%</b>	<b>435 4%</b>	<b>388 4%</b>	<b>193 2%</b>	<b>241 2%</b>	<b>232 2%</b>	<b>612 6%</b>	<b>437 4%</b>
Mahan - Female Prison	464 100%	71 15%	19 4%	76 16%	86 19%	37 8%	30 6%	59 13%	16 3%	17 4%	11 2%	5 1%	2 0%	3 1%	24 5%	8 2%
<b>Total Prison Complex</b>	<b>10,946 100%</b>	<b>599 5%</b>	<b>445 4%</b>	<b>1,446 13%</b>	<b>1,722 16%</b>	<b>886 8%</b>	<b>1,215 11%</b>	<b>1,390 13%</b>	<b>635 6%</b>	<b>452 4%</b>	<b>399 4%</b>	<b>198 2%</b>	<b>243 2%</b>	<b>235 2%</b>	<b>636 6%</b>	<b>445 4%</b>

### ADTC

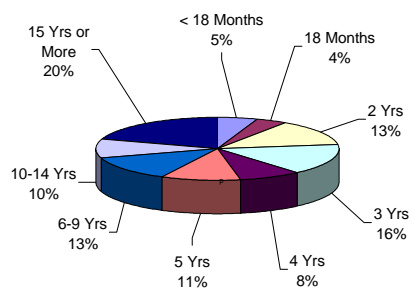


The median mandatory minimum term at ADTC is 7 years 6 months.

Forty-Two percent (42%) of the ADTC population have mandatory minimum sentences (267 of 637).

Of those with mandatory minimums, 42% have minimum terms of 5 years or less.

### PRISON MALES

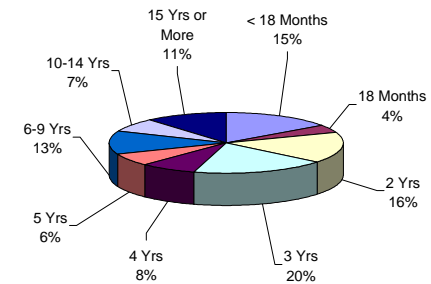


Of the 16,596 prison complex males, 62% (10,215) have mandatory minimum terms.

The median mandatory minimum term for prison complex males is 5 years (ADTC excluded).

Eighty percent (80%) of New Jersey State Prison inmates have mandatory minimum terms and 71% percent of those have minimum terms of 15 years or more.

### FEMALE FACILITIES



The median mandatory minimum term at Edna Mahan is 3 years 3 months.

At Edna Mahan, 43% of the females housed have minimum terms (464 of 1075).

Sixty-nine percent (69%) of the females with mandatory minimum terms have terms of 5 years or less.

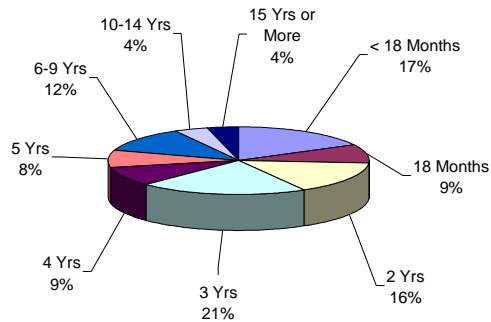
### Youth Complex Offenders on January 8, 2001, By Mandatory Minimum Term

Institution	Total	< 18 Months	18 Months	2 Years	3 Years	4 Years	5 Years	6-9 Years	10 Years	11-14 Years	15 Years	16-19 Years	20-24 Years	25-29 Years	30 Years	30+ Years
<b>Garden State</b>	1,087 100%	159 15%	86 8%	167 15%	200 18%	92 8%	87 8%	137 13%	27 2%	36 3%	24 2%	16 1%	11 1%	3 0%	32 3%	10 1%
<b>Mountainview Main</b>	659 100%	145 22%	74 11%	126 19%	174 26%	66 10%	32 5%	42 6%	0 0%	0 0%	0 0%	0 0%	0 0%	0 0%	0 0%	0 0%
<b>Mountainview Stokes</b>	64 100%	18 28%	9 14%	15 23%	13 20%	3 5%	1 2%	5 8%	0 0%	0 0%	0 0%	0 0%	0 0%	0 0%	0 0%	0 0%
<b>Mountainview Total</b>	723 100%	163.0 23%	83.0 11%	141.0 20%	187.0 26%	69.0 10%	33.0 5%	47.0 7%	0.0 0%	0.0 0%	0.0 0%	0.0 0%	0.0 0%	0.0 0%	0.0 0%	0.0 0%
<b>Wagner Main</b>	790 100%	77 10%	50 6%	110 14%	186 24%	84 11%	99 13%	123 16%	26 3%	28 4%	5 1%	1 0%	1 0%	0 0%	0 0%	0 0%
<b>Wagner Ad Seg</b>	115 100%	24 21%	5 4%	14 12%	13 11%	15 13%	14 12%	21 18%	3 3%	3 3%	0 0%	3 3%	0 0%	0 0%	0 0%	0 0%
<b>Wagner Adult Boot Camp</b>	95 100%	59 62%	25 26%	4 4%	4 4%	0 0%	0 0%	3 3%	0 0%	0 0%	0 0%	0 0%	0 0%	0 0%	0 0%	0 0%
<b>Wagner Total</b>	1,000 100%	160 16%	80 8%	128 13%	203 20%	99 10%	113 11%	147 15%	29 3%	31 3%	5 1%	4 0%	1 0%	0 0%	0 0%	0 0%
<b>Total Youth</b>	<b>2,810 100%</b>	<b>482 17%</b>	<b>249 9%</b>	<b>436 16%</b>	<b>590 21%</b>	<b>260 9%</b>	<b>233 8%</b>	<b>331 12%</b>	<b>56 2%</b>	<b>67 2%</b>	<b>29 1%</b>	<b>20 1%</b>	<b>12 0%</b>	<b>3 0%</b>	<b>32 1%</b>	<b>10 0%</b>

## Offenders In Other Facilities on January 8, 2001, By Mandatory Minimum Term

Institution	Total	< 18 Months	18 Months	2 Years	3 Years	4 Years	5 Years	6-9 Years	10 Years	11-14 Years	15 Years	16-19 Years	20-24 Years	25-29 Years	30 Years	30+ Years
Central Medical	13 100%	1 8%	1 8%	0 0%	2 15%	2 15%	1 8%	1 8%	1 8%	1 8%	1 8%	0 0%	0 0%	0 0%	2 15%	0 0%
County Jail	908 100%	206 23%	110 12%	205 23%	201 22%	54 6%	38 4%	77 8%	7 1%	5 1%	3 0%	1 0%	0 0%	0 0%	0 0%	1 0%
EM/HC	85 100%	29 34%	9 11%	27 32%	10 12%	5 6%	2 2%	3 4%	0 0%	0 0%	0 0%	0 0%	0 0%	0 0%	0 0%	0 0%
Halfway House	1,641 100%	168 10%	152 9%	405 25%	469 29%	125 8%	137 8%	149 9%	17 1%	11 1%	0 0%	5 6%	3 4%	0 0%	0 0%	0 0%
<b>Total Other Facilities</b>	<b>2,647 100%</b>	<b>404 15%</b>	<b>272 10%</b>	<b>637 24%</b>	<b>682 26%</b>	<b>186 7%</b>	<b>178 7%</b>	<b>230 9%</b>	<b>25 1%</b>	<b>17 1%</b>	<b>4 0%</b>	<b>6 0%</b>	<b>3 0%</b>	<b>- 0%</b>	<b>2 0%</b>	<b>1 0%</b>

### YOUTH COMPLEX

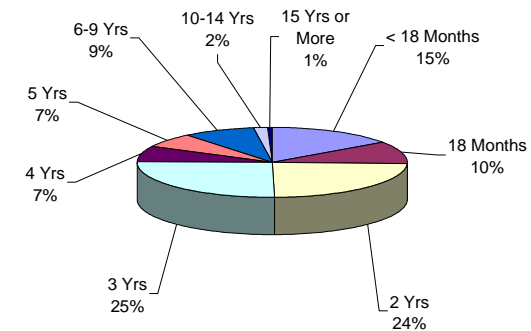


The median mandatory minimum term for youth complex offenders is 3 years.

Among youth complex offenders, 61% have mandatory minimum terms (2810 of 4622).

Of these, 80% have mandatory minimum terms of 5 years or less.

### OFFENDERS IN OTHER FACILITIES



The median mandatory minimum term for inmates in 'other facilities' is 2 years 6 months.

Forty-seven percent (47%) of the offenders in 'other facilities' have mandatory minimum terms (2647 of 5692).

Of these, 89% have mandatory minimum terms of 5 years or less.



**OFFENDERS IN NEW JERSEY CORRECTIONAL INSTITUTIONS  
ON JANUARY 8, 2001, BY AGE**

The age of the offender is the chronological age as of January 1, 2001.

**OFFENDERS IN CORRECTIONAL INSTITUTIONS ON JANUARY 8, 2001, BY AGE**

Age	Total		Prison Males		Youth Complex		ADTC		Edna Mahan		Other Facilities	
	#	%	#	%	#	%	#	%	#	%	#	%
TOTAL OFFENDERS	28,622	100%	16,596	100%	4,622	100%	637	100%	1,075	100%	5,692	100%
< 17 Years	5	0%	0	0%	4	0%	0	0%	0	0%	1	0%
17 Years	19	0%	1	0%	18	0%	0	0%	0	0%	0	0%
18-20 Years	1,104	4%	157	1%	774	17%	6	1%	25	2%	142	2%
21-22 Years	2,300	8%	451	3%	1392	30%	10	2%	58	5%	389	7%
23-24 Years	2,377	8%	719	4%	1102	24%	6	1%	58	5%	492	9%
25-27 Years	3,354	12%	1456	9%	1055	23%	18	3%	92	9%	733	13%
28-30 Years	3,597	13%	2354	14%	212	5%	39	6%	126	12%	866	15%
31-33 Years	3,335	12%	2367	14%	40	1%	44	7%	163	15%	721	13%
34-36 Years	3,082	11%	2186	13%	16	0%	75	12%	156	15%	649	11%
37-39 Years	2,734	10%	1949	12%	7	0%	71	11%	127	12%	580	10%
40-44 Years	3,150	11%	2296	14%	2	0%	101	16%	141	13%	610	11%
45-49 Years	1,751	6%	1285	8%	0	0%	89	14%	73	7%	304	5%
50-54 Years	969	3%	726	4%	0	0%	84	13%	35	3%	124	2%
55-59 Years	454	2%	359	2%	0	0%	34	5%	13	1%	48	1%
60-64 Years	199	1%	152	1%	0	0%	23	4%	4	0%	20	0%
65+ Years	192	1%	138	1%	0	0%	37	6%	4	0%	13	0%
Unspec	0	0%	0	0%	0	0%	0	0%	0	0%	0	0%

- The median age for adult residents is 32 years.
- Four percent (4%) of all adult offenders are 20 years of age or younger.
- Forty-one percent (41%) of all adult offenders are between the ages of 21-30.
- Thirty-two percent (32%) of all adult offenders are 31 to 39 years of age.
- Twenty-three percent (23%) of all adult offenders are 40 years of age and older.

**Prison Complex Offenders on January 8, 2001, By Age**

Institution	Total	< 17 Years	17 Years	18-20 Years	21-22 Years	23-24 Years	25-27 Years	28-30 Years	31-33 Years	34-36 Years	37-39 Years	40-44 Years	45-49 Years	50-54 Years	55-59 Years	60-64 Years	65+ Years	Unspec
<b>Bayside Main</b>	1343 100%	0 0%	0 0%	0 0%	22 2%	54 4%	142 11%	230 17%	189 14%	179 13%	170 13%	184 14%	98 7%	49 4%	18 1%	2 0%	6 0%	0 0%
<b>Bayside Farm</b>	703 100%	0 0%	0 0%	0 0%	1 0%	10 1%	44 6%	112 16%	113 16%	113 16%	83 12%	104 15%	63 9%	36 5%	15 2%	5 1%	4 1%	0 0%
<b>Bayside Ancora</b>	345 100%	0 0%	0 0%	1 0%	0 0%	4 1%	22 6%	59 17%	71 21%	50 14%	40 12%	60 17%	24 7%	11 3%	3 1%	0 0%	0 0%	0 0%
<b>Bayside Total</b>	2391 100%	0 0%	0 0%	1 0%	23 1%	68 3%	208 9%	401 17%	373 16%	342 14%	293 12%	348 15%	185 8%	96 4%	36 2%	7 0%	10 0%	0 0%
<b>CRAF Jones Farm</b>	292 100%	0 0%	0 0%	0 0%	3 1%	4 1%	21 7%	43 15%	47 16%	44 15%	39 13%	56 19%	26 9%	8 3%	1 0%	0 0%	0 0%	0 0%
<b>CRAF Reception</b>	833 100%	0 0%	1 0%	60 7%	91 11%	94 11%	105 13%	99 12%	86 10%	79 9%	69 8%	72 9%	39 5%	22 3%	8 1%	6 1%	2 0%	0 0%
<b>CRAF Total</b>	1125 100%	0 0%	1 0%	60 5%	94 8%	98 9%	126 11%	142 13%	133 12%	123 11%	108 10%	128 11%	65 6%	30 3%	9 1%	6 1%	2 0%	0 0%
<b>East Jersey Main</b>	1281 100%	0 0%	0 0%	1 0%	9 1%	22 2%	87 7%	149 12%	140 11%	171 13%	179 14%	210 16%	135 11%	82 6%	54 4%	25 2%	17 1%	0 0%
<b>East Jersey Camp</b>	139 100%	0 0%	0 0%	0 0%	2 1%	2 1%	3 2%	23 17%	25 18%	16 12%	19 14%	27 19%	12 9%	8 6%	2 1%	0 0%	0 0%	0 0%
<b>East Jersey Marlboro</b>	133 100%	0 0%	0 0%	0 0%	2 2%	0 0%	6 5%	27 20%	15 11%	25 19%	17 13%	16 12%	11 8%	8 6%	4 3%	1 1%	1 1%	0 0%
<b>East Jersey Ad Seg</b>	356 100%	0 0%	0 0%	14 4%	43 12%	44 12%	42 12%	42 12%	50 14%	34 10%	25 7%	38 11%	14 4%	8 2%	0 0%	1 0%	1 0%	0 0%
<b>East Jersey</b>	1909	0	0	15	56	68	138	241	230	246	240	291	172	106	60	27	19	0

Total	100%	0%	0%	1%	3%	4%	7%	13%	12%	13%	13%	15%	9%	6%	3%	1%	1%	0%
-------	------	----	----	----	----	----	----	-----	-----	-----	-----	-----	----	----	----	----	----	----

**Prison Complex Offenders on January 8, 2001, By Age**

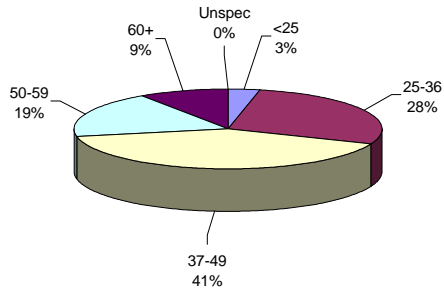
Institution	Total	< 17 Years	17 Years	18-20 Years	21-22 Years	23-24 Years	25-27 Years	28-30 Years	31-33 Years	34-36 Years	37-39 Years	40-44 Years	45-49 Years	50-54 Years	55-59 Years	60-64 Years	65+ Years	<i>Unsp ec</i>
Midstate	609 100%	0 0%	0 0%	0 0%	4 1%	13 2%	49 8%	78 13%	92 15%	74 12%	79 13%	91 15%	54 9%	31 5%	23 4%	11 2%	10 2%	0 0%
NJ State Prison Ad Seg Female	27 100%	0 0%	0 0%	0 0%	4 15%	3 11%	3 11%	7 26%	3 11%	5 19%	1 4%	1 4%	0 0%	0 0%	0 0%	0 0%	0 0%	0 0%
NJ State Prison Main	1777 100%	0 0%	0 0%	13 1%	60 3%	79 4%	154 9%	192 11%	195 11%	230 13%	187 10%	260 14%	168 9%	117 6%	61 3%	31 2%	30 2%	0 0%
NJ State Prison Total	1804 100%	0 0%	0 0%	13 1%	64 4%	82 5%	157 9%	199 11%	198 11%	235 13%	188 10%	261 14%	168 9%	117 6%	61 3%	31 2%	30 2%	0 0%
Northern Main	2292 100%	0 0%	0 0%	24 1%	66 3%	130 6%	231 10%	350 15%	324 14%	300 13%	265 12%	294 13%	180 8%	76 3%	34 1%	11 0%	7 0%	0 0%
Northern Ad Seg Male	359 100%	0 0%	0 0%	19 5%	42 12%	45 13%	63 18%	58 16%	45 13%	25 7%	19 5%	26 7%	10 3%	3 1%	4 1%	0 0%	0 0%	0 0%
Northern Total	2651 100%	0 0%	0 0%	43 2%	108 4%	175 7%	294 11%	408 15%	369 14%	325 12%	284 11%	320 12%	190 7%	79 3%	38 1%	11 0%	7 0%	0 0%
Riverfront	1144 100%	0 0%	0 0%	2 0%	23 2%	55 5%	97 8%	169 15%	166 15%	156 14%	130 11%	166 15%	89 8%	46 4%	27 2%	9 1%	9 1%	0 0%
Southern	1640 100%	0 0%	0 0%	1 0%	9 1%	38 2%	137 8%	253 15%	287 18%	227 14%	226 14%	233 14%	110 7%	69 4%	32 2%	9 1%	9 1%	0 0%
South Woods	3323 100%	0 0%	0 0%	22 1%	70 2%	122 4%	250 8%	463 14%	519 16%	458 14%	401 12%	458 14%	252 8%	152 5%	73 2%	41 1%	42 1%	0 0%
<b>SUBTOTAL</b>	<b>16596</b>	<b>0</b>	<b>1</b>	<b>157</b>	<b>451</b>	<b>719</b>	<b>1456</b>	<b>2354</b>	<b>2367</b>	<b>2186</b>	<b>1949</b>	<b>2296</b>	<b>1285</b>	<b>726</b>	<b>359</b>	<b>152</b>	<b>138</b>	<b>0</b>

PRISON MALES	100%	0%	0%	1%	3%	4%	9%	14%	14%	13%	12%	14%	8%	4%	2%	1%	1%	0%
--------------	------	----	----	----	----	----	----	-----	-----	-----	-----	-----	----	----	----	----	----	----

### Prison Complex Offenders on January 8, 2001, By Age

Institution	Total	< 17 Years	17 Years	18-20 Years	21-22 Years	23-24 Years	25-27 Years	28-30 Years	31-33 Years	34-36 Years	37-39 Years	40-44 Years	45-49 Years	50-54 Years	55-59 Years	60-64 Years	65+ Years	Unspec
ADTC	637 100%	0 0%	0 0%	6 1%	10 2%	6 1%	18 3%	39 6%	44 7%	75 12%	71 11%	101 16%	89 14%	84 13%	34 5%	23 4%	37 6%	0 0%
<b>Subtotal</b>	<b>17233 100%</b>	<b>0 0%</b>	<b>1 0%</b>	<b>163 1%</b>	<b>461 3%</b>	<b>725 4%</b>	<b>1474 9%</b>	<b>2393 14%</b>	<b>2411 14%</b>	<b>2261 13%</b>	<b>2020 12%</b>	<b>2397 14%</b>	<b>1374 8%</b>	<b>810 5%</b>	<b>393 2%</b>	<b>175 1%</b>	<b>175 1%</b>	<b>0 0%</b>
Mahan - Female Prison	1075 100%	0 0%	0 0%	25 2%	58 5%	58 5%	92 9%	126 12%	163 15%	156 15%	127 12%	141 13%	73 7%	35 3%	13 1%	4 0%	4 0%	0 0%
<b>Total Prison Complex</b>	<b>18308 100%</b>	<b>0 0%</b>	<b>1 0%</b>	<b>188 1%</b>	<b>519 3%</b>	<b>783 4%</b>	<b>1566 9%</b>	<b>2519 14%</b>	<b>2574 14%</b>	<b>2417 13%</b>	<b>2147 12%</b>	<b>2538 14%</b>	<b>1447 8%</b>	<b>845 5%</b>	<b>406 2%</b>	<b>179 1%</b>	<b>179 1%</b>	<b>0 0%</b>

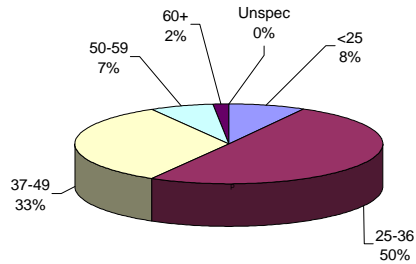
**ADTC**



The median age at ADTC is 42 years.

Twenty-eight percent (28%) of the ADTC offenders are 50 years of age or older. This may be compared with 8% of male prison complex offenders and 5% of female (Edna Mahan) offenders.

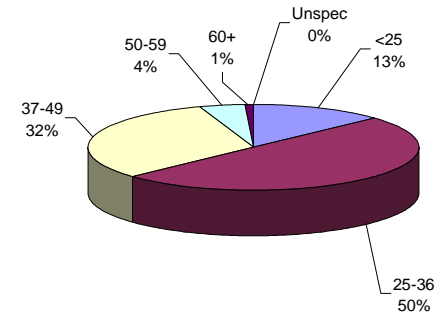
**PRISON MALES**



The median age for prison complex males (excluding ADTC) is 35 years.

Fifty percent (50%) of the male prison complex population are age 25 to 36.

**FEMALE FACILITIES**



The median age for female inmates (Edna Mahan) is 34 years.

Fifty percent (50%) of the women at Edna Mahan are age 25 to 36.

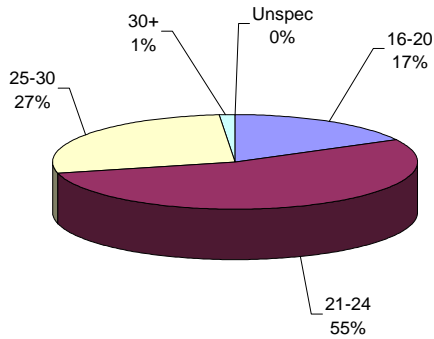
### Youth Complex Offenders on January 8,2001, By Age

Institution	Total	< 17 Years	17 Years	18-20 Years	21-22 Years	23-24 Years	25-27 Years	28-30 Years	31-33 Years	34-36 Years	37-39 Years	40-44 Years	45-49 Years	50-54 Years	55-59 Years	60-64 Years	65+ Years	Unspec
<b>Garden State</b>	1793	4	11	302	548	406	417	76	15	10	2	2	0	0	0	0	0	0
	100%	0%	1%	17%	31%	23%	23%	4%	1%	1%	0%	0%	0%	0%	0%	0%	0%	0%
<b>Mountainview Main</b>	1171	0	3	224	352	296	250	42	3	1	0	0	0	0	0	0	0	0
	100%	0%	0%	19%	30%	25%	21%	4%	0%	0%	0%	0%	0%	0%	0%	0%	0%	0%
<b>Mountainview Stokes</b>	111	0	0	15	37	37	16	6	0	0	0	0	0	0	0	0	0	0
	100%	0%	0%	14%	33%	33%	14%	5%	0%	0%	0%	0%	0%	0%	0%	0%	0%	0%
<b>Mountainview Total</b>	1282	0	3	239	389	333	266	48	3	1	0	0	0	0	0	0	0	0
	100%	0%	0%	19%	30%	26%	21%	4%	0%	0%	0%	0%	0%	0%	0%	0%	0%	0%
<b>Wagner Main</b>	1,224	0	3	143	334	307	329	79	21	4	4	0	0	0	0	0	0	0
	100%	0%	0%	12%	27%	25%	27%	6%	2%	0%	0%	0%	0%	0%	0%	0%	0%	0%
<b>Wagner Ad Seg</b>	189	0	0	39	75	32	32	8	1	1	1	0	0	0	0	0	0	0
	100%	0%	0%	21%	40%	17%	17%	4%	1%	1%	1%	0%	0%	0%	0%	0%	0%	0%
<b>Wagner Adult Boot Camp</b>	134	0	1	51	46	24	11	1	0	0	0	0	0	0	0	0	0	0
	100%	0%	1%	38%	34%	18%	8%	1%	0%	0%	0%	0%	0%	0%	0%	0%	0%	0%
<b>Wagner Total</b>	1547	0	4	233	455	363	372	88	22	5	5	0	0	0	0	0	0	0
	100%	0%	0%	15%	29%	23%	24%	6%	1%	0%	0%	0%	0%	0%	0%	0%	0%	0%
<b>Total Youth</b>	<b>4,622</b>	<b>4</b>	<b>18</b>	<b>774</b>	<b>1392</b>	<b>1102</b>	<b>1055</b>	<b>212</b>	<b>40</b>	<b>16</b>	<b>7</b>	<b>2</b>	<b>0</b>	<b>0</b>	<b>0</b>	<b>0</b>	<b>0</b>	<b>0</b>
	<b>100%</b>	<b>0%</b>	<b>0%</b>	<b>17%</b>	<b>30%</b>	<b>24%</b>	<b>23%</b>	<b>5%</b>	<b>1%</b>	<b>0%</b>	<b>0%</b>	<b>0%</b>	<b>0%</b>	<b>0%</b>	<b>0%</b>	<b>0%</b>	<b>0%</b>	<b>0%</b>

### Offenders In Other Facilities on January 8, 2001, By Age

Institution	Total	< 17 Years	17 Years	18-20 Years	21-22 Years	23-24 Years	25-27 Years	28-30 Years	31-33 Years	34-36 Years	37-39 Years	40-44 Years	45-49 Years	50-54 Years	55-59 Years	60-64 Years	65+ Years	Unspec
Central Medical	19	0	0	0	1	0	0	2	0	1	1	4	2	1	1	2	4	0
	100%	0%	0%	0%	5%	0%	0%	11%	0%	5%	5%	21%	11%	5%	5%	11%	21%	0%
County Jail	2936	1	0	60	182	255	369	449	376	353	311	335	153	57	22	10	3	0
	100%	0%	0%	2%	6%	9%	13%	15%	13%	12%	11%	11%	5%	2%	1%	0%	0%	0%
EM/HC	136	0	0	13	16	17	16	16	16	12	6	15	7	2	0	0	0	0
	100%	0%	0%	10%	12%	13%	12%	12%	12%	9%	4%	11%	5%	1%	0%	0%	0%	0%
Halfway House	2601	0	0	69	190	220	348	399	329	283	262	256	142	64	25	8	6	0
	100%	0%	0%	3%	7%	8%	13%	15%	13%	11%	10%	10%	5%	2%	1%	0%	0%	0%
<b>Total Other Facilities</b>	<b>5,692</b>	<b>1</b>	<b>0</b>	<b>142</b>	<b>389</b>	<b>492</b>	<b>733</b>	<b>866</b>	<b>721</b>	<b>649</b>	<b>580</b>	<b>610</b>	<b>304</b>	<b>124</b>	<b>48</b>	<b>20</b>	<b>13</b>	<b>0</b>
	100%	0%	0%	2%	7%	9%	13%	15%	13%	11%	10%	11%	5%	2%	1%	0%	0%	0%

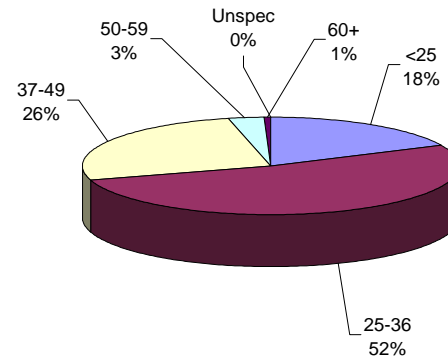
#### YOUTH COMPLEX



The median age for the youth complex is 23 years.

Eighty-one percent (81%) of all youth complex inmates are between the ages of 21 and 30.

#### OFFENDERS IN OTHER FACILITIES



The median age for offenders in 'other facilities' is 31 years.

The median age for offenders housed in county jail is 32 years, while those offenders on electronic monitoring/ home confinement is 28 years. Offenders in halfway houses have a median age of 31 years.



**OFFENDERS IN NEW JERSEY CORRECTIONAL INSTITUTIONS  
ON JANUARY 8, 2001, BY RACE/ETHNIC IDENTIFICATION**

In these tabulations, a Hispanic is a person of Mexican, Puerto Rican, Cuban, South American or other Spanish culture or origin (Spain or Portugal) regardless of complexion.

**OFFENDERS IN CORRECTIONAL INSTITUTIONS ON JANUARY 8, 2001, BY RACE/ETHNIC IDENTIFICATION**

<b>Ethnic Identification</b>	<b>Total</b>		<b>Prison Males</b>		<b>Youth Complex</b>		<b>ADTC</b>		<b>Edna Mahan</b>		<b>Other Facilities</b>	
	<b>#</b>	<b>%</b>	<b>#</b>	<b>%</b>	<b>#</b>	<b>%</b>	<b>#</b>	<b>%</b>	<b>#</b>	<b>%</b>	<b>#</b>	<b>%</b>
<b>TOTAL OFFENDERS</b>	28,622	100%	16,596	100%	4,622	100%	637	100%	1,075	100%	5,692	100%
Black	18,055	63%	10,437	63%	3,084	67%	167	26%	641	60%	3,726	65%
White	5,343	19%	3,082	19%	631	14%	378	59%	298	28%	954	17%
Hispanic	5,111	18%	3,019	18%	881	19%	84	13%	130	12%	997	18%
Asian	93	0%	49	0%	22	0%	4	1%	6	1%	12	0%
American Indian	7	0%	3	0%	2	0%	0	0%	0	0%	2	0%
Other or Unspec.	13	0%	6	0%	2	0%	4	1%	0	0%	1	0%

- On January 8, 2001, 63% of all state correctional institution offenders were Black, 19% were White and 18% were Hispanic.

### Prison Complex Offenders on January 8, 2001, By Race/Ethnic Identification

Institution	Total	Black	White	Hispanic	Asian	American Indian	Other or Unspec.
<b><i>Bayside</i></b>	1,343	821	237	282	2	1	0
Main	100%	61%	18%	21%	0%	0%	0%
Bayside Farm	703	468	144	91	0	0	0
100%	100%	67%	20%	13%	0%	0%	0%
Bayside Ancora	345	222	57	65	1	0	0
100%	100%	64%	17%	19%	0%	0%	0%
<b>Bayside Total</b>	2,391	1511	438	438	3	1	0
	100%	63%	18%	18%	0%	0%	0%
<b>CRAF Jones Farm</b>	292	179	54	59	0	0	0
	100%	61%	18%	20%	0%	0%	0%
<b>CRAF Reception</b>	833	516	153	162	2	0	0
	100%	62%	18%	19%	0%	0%	0%
<b>CRAF Total</b>	1,125	695	207	221	2	0	0
	100%	62%	18%	20%	0%	0%	0%
<b>East Jersey Main</b>	1,281	850	208	220	2	1	0
	100%	66%	16%	17%	0%	0%	0%
<b>East Jersey Camp</b>	139	97	18	24	0	0	0
	100%	70%	13%	17%	0%	0%	0%
<b>East Jersey Marlboro</b>	133	84	30	19	0	0	0
	100%	63%	23%	14%	0%	0%	0%
<b>East Jersey Ad Seg</b>	356	237	52	66	1	0	0
	100%	67%	15%	19%	0%	0%	0%

<b>East Jersey</b>	1,909	1268	308	329	3	1	0
<b>Total</b>	100%	66%	16%	17%	0%	0%	0%

**Prison Complex Offenders on January 8, 2001, By Race/Ethnic Identification**

<b>Institution</b>	<b>Total</b>	<b>Black</b>	<b>White</b>	<b>Hispanic</b>	<b>Asian</b>	<b>American Indian</b>	<b>Other</b>
<b>Midstate</b>	609	323	152	133	1	0	0
	100%	53%	25%	22%	0%	0%	0%
<b>NJ State Prison Ad Seg Female</b>	27	20	5	2	0	0	0
	100%	1%	0%	0%	0%	0%	0%
<b>NJ State Prison Main</b>	1,777	1113	384	269	9	0	2
	100%	62%	21%	15%	0%	0%	0%
<b>NJ State Prison Total</b>	1,804	1133	389	271	9	0	2
	100%	63%	22%	15%	0%	0%	0%
<b>Northern Main</b>	2,292	1492	278	506	15	1	0
	100%	65%	12%	22%	1%	0%	0%
<b>Northern Ad Seg Male</b>	359	217	52	89	1	0	0
	100%	60%	14%	25%	0%	0%	0%
<b>Northern Total</b>	2,651	1709	330	595	16	1	0
	100%	64%	12%	22%	1%	0%	0%
<b>Riverfront</b>	1,144	722	209	209	3	0	1
	100%	63%	18%	18%	0%	0%	0%
<b>Southern</b>	1,640	1093	267	277	3	0	0
	100%	67%	16%	17%	0%	0%	0%
<b>South Woods</b>	3,323	1983	782	546	9	0	3
	100%	60%	24%	16%	0%	0%	0%
<b>SUBTOTAL</b>	<b>16,596</b>	<b>10,437</b>	<b>3,082</b>	<b>3,019</b>	<b>49</b>	<b>3</b>	<b>6</b>

<b>PRISON MALES</b>	<b>100%</b>	<b>63%</b>	<b>19%</b>	<b>18%</b>	<b>0%</b>	<b>0%</b>	<b>0%</b>
---------------------	-------------	------------	------------	------------	-----------	-----------	-----------

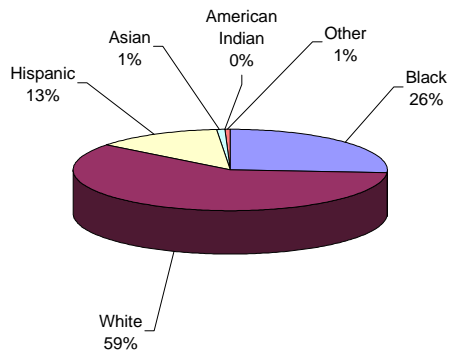
## Prison Complex Offenders on January 8, 2001, By Race/Ethnic Identification

Institution	Total	Black	White	Hispanic	Asian	American Indian	Other
<b>ADTC</b>	637	167	378	84	4	0	4
	100%	26%	59%	13%	1%	0%	1%
<b>Subtotal</b>	<b>17,233</b>	<b>10,604</b>	<b>3,460</b>	<b>3,103</b>	<b>53</b>	<b>3</b>	<b>10</b>
	<b>100%</b>	<b>62%</b>	<b>20%</b>	<b>18%</b>	<b>0%</b>	<b>0%</b>	<b>0%</b>
<b>Mahan - Female Prison</b>	1,075	641	298	130	6	0	0
	100%	60%	28%	12%	1%	0%	0%
<b>Total Prison Complex</b>	<b>18,308</b>	<b>11,245</b>	<b>3,758</b>	<b>3,233</b>	<b>59</b>	<b>3</b>	<b>10</b>
	<b>100%</b>	<b>61%</b>	<b>21%</b>	<b>18%</b>	<b>0%</b>	<b>0%</b>	<b>0%</b>

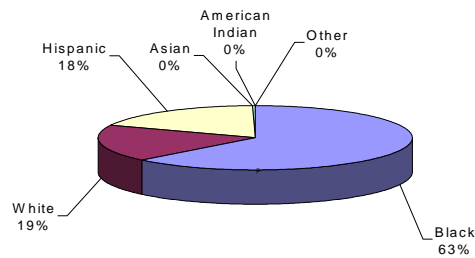
**ADTC**

**PRISON MALES**

**FEMALE FACILITIES**



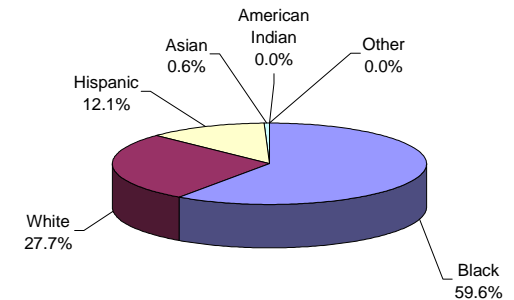
White offenders comprised 59% of the offenders at ADTC.



The largest proportion of Black male offenders in a major facility was at Southern State Correctional Facility (67%).

The largest proportion of White male offenders at a major facility was at Mid-State Correctional Facility (25%).

The largest proportion of Hispanic male offenders at a major facility were at Northern State Prison and Mid-State Correctional Facility (22%).



Black offenders comprised 60% of the population at Edna Mahan. This may be compared with Black offenders comprising 63% of prison complex males.

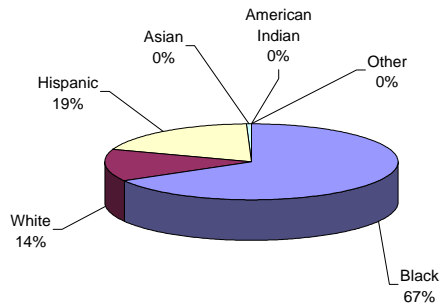
**Youth Complex Offenders on January 8, 2001, By Race/Ethnic Identification**

<b>Institution</b>	<b>Total</b>	<b>Black</b>	<b>White</b>	<b>Hispanic</b>	<b>Asian</b>	<b>American Indian</b>	<b>Other</b>
<b><i>Garden State</i></b>	1793	1121	317	344	9	1	1
	100%	63%	18%	19%	1%	0%	0%
<b>Mountianview Main</b>	1171	813	139	213	4	1	1
	100%	69%	12%	18%	0%	0%	0%
<b>Mountianview Stokes</b>	111	76	15	20	0	0	0
	100%	68%	14%	18%	0%	0%	0%
<b>Mountianview Total</b>	1,282	889	154	233	4	1	1
	100%	69%	12%	18%	0%	0%	0%
<b>Wagner Main</b>	1224	854	131	231	8	0	0
	100%	70%	11%	19%	1%	0%	0%
<b>Wagner Ad Seg</b>	189	132	15	41	1	0	0
	100%	70%	8%	22%	1%	0%	0%
<b>Wagner Adult Boot Camp</b>	134	88	14	32	0	0	0
	100%	66%	10%	24%	0%	0%	0%
<b>Wagner Total</b>	1547	1074	160	304	9	0	0
	100%	69%	10%	20%	1%	0%	0%
<b>Total Youth</b>	<b>4622</b>	<b>3084</b>	<b>631</b>	<b>881</b>	<b>22</b>	<b>2</b>	<b>2</b>
	<b>100%</b>	<b>67%</b>	<b>14%</b>	<b>19%</b>	<b>0%</b>	<b>0%</b>	<b>0%</b>

## Offenders In Other Facilities on January 8, 2001, By Race/Ethnic Identification

Institution	Total	Black	White	Hispanic	Asian	American Indian	Other
Central Medical	19	9	6	3	0	1	0
	100%	47%	32%	16%	0%	5%	0%
County Jail	2936	1835	532	564	4	1	0
	100%	63%	18%	19%	0%	0%	0%
EM/HC	136	85	26	24	1	0	0
	100%	63%	19%	18%	1%	0%	0%
Halfway House	2601	1797	390	406	7	0	1
	100%	69%	15%	16%	0%	0%	0%
<b>Total Other Facilities</b>	<b>5692</b>	<b>3726</b>	<b>954</b>	<b>997</b>	<b>12</b>	<b>2</b>	<b>1</b>
	100%	65%	17%	18%	0%	0%	0%

### YOUTH COMPLEX

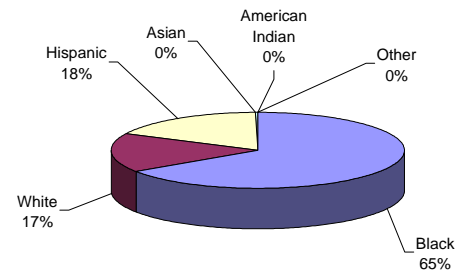


The largest proportions of Black offenders in the youth complex facilities was housed at Wagner and Mountainview (69%).

The largest proportion of White offenders in the youth complex facilities was housed at Garden State (18%).

The largest proportion of Hispanic offenders in the youth complex facilities were housed at Wagner (20%).

### OFFENDERS IN OTHER FACILITIES



Race and ethnicity for inmates assigned to 'other facilities' was roughly equivalent to that for the total adult inmate population.



**OFFENDERS IN NEW JERSEY CORRECTIONAL INSTITUTIONS  
ON JANUARY 8, 2001, BY COUNTY OF COMMITMENT**

**OFFENDERS IN NEW JERSEY CORRECTIONAL INSTITUTIONS ON JANUARY 8, 2001, BY COUNTY OF COMMITMENT**

County of Commitment	Total		Prison Males		Youth Complex		ADTC		Edna Mahan		Other Facilities	
	#	%	#	%	#	%	#	%	#	%	#	%
TOTAL OFFENDERS	28,622	100%	16,596	100%	4,622	100%	637	100%	1,075	100%	5,692	100%
Atlantic	2,064	7%	1201	7%	291	6%	33	5%	118	11%	421	7%
Bergen	1,285	4%	741	4%	139	3%	30	5%	60	6%	315	6%
Burlington	474	2%	293	2%	92	2%	24	4%	14	1%	51	1%
Camden	3,874	14%	2269	14%	718	16%	91	14%	136	13%	660	12%
Cape May	484	2%	300	2%	77	2%	19	3%	18	2%	70	1%
Cumberland	641	2%	373	2%	84	2%	28	4%	21	2%	135	2%
Essex	5,209	18%	3271	20%	858	19%	48	8%	121	11%	911	16%
Gloucester	451	2%	260	2%	84	2%	18	3%	22	2%	67	1%
Hudson	2,695	9%	1608	10%	489	11%	31	5%	71	7%	496	9%
Hunterdon	132	0%	70	0%	20	0%	7	1%	5	0%	30	1%
Mercer	1,197	4%	728	4%	171	4%	30	5%	48	4%	220	4%
Middlesex	1,535	5%	853	5%	301	7%	56	9%	53	5%	272	5%
Monmouth	1,682	6%	921	6%	231	5%	46	7%	81	8%	403	7%
Morris	357	1%	217	1%	51	1%	25	4%	12	1%	52	1%
Ocean	769	3%	454	3%	133	3%	29	5%	40	4%	113	2%
Passaic	2,218	8%	892	5%	288	6%	44	7%	83	8%	911	16%
Salem	262	1%	136	1%	38	1%	8	1%	5	0%	75	1%
Somerset	444	2%	257	2%	61	1%	14	2%	28	3%	84	1%
Sussex	151	1%	87	1%	22	0%	11	2%	10	1%	21	0%
Union	2,327	8%	1405	8%	429	9%	27	4%	114	11%	352	6%
Warren	214	1%	124	1%	33	1%	18	3%	11	1%	28	0%
Not Coded	157	1%	136	1%	12	0%	0	0%	4	0%	5	0%

- Essex County has the highest percentage of commitments at the prison complex (20%) and the youth complex (19%).
- Camden County has the highest percentage of commitments at Edna Mahan (13%) and ADTC (14%).
- Passaic County and Essex County have the joint highest percentage of commitments (16%) at other adult facilities.
- Two counties, Essex and Camden, combine to comprise approximately a third of total DOC commitments.

**Prison Complex Offenders on January 8, 2001, By County Of Commitment**

Institution	Total	Atl	Ber	Burl	Cam	Cape May	Cum	Ess	Glou	Hud	Hunt	Mer	Mid	Mon	Mor	Oc	Pas	Sal	Som	Sus	Un	War	Not Coded
<b>Bayside Main</b>	1343 100%	115 9%	39 3%	15 1%	244 18%	44 3%	31 2%	196 15%	25 2%	140 10%	6 0%	54 4%	86 6%	64 5%	18 1%	44 3%	49 4%	18 1%	14 1%	3 0%	120 9%	5 0%	13 1%
<b>Bayside Farm</b>	703 100%	59 8%	33 5%	8 1%	127 18%	19 3%	18 3%	124 18%	16 2%	58 8%	3 0%	28 4%	24 3%	52 7%	5 1%	24 3%	30 4%	11 2%	10 1%	1 0%	47 7%	2 0%	4 1%
<b>Bayside Ancora</b>	345 100%	45 13%	18 5%	11 3%	62 18%	8 2%	8 2%	43 12%	5 1%	29 8%	0 0%	18 5%	19 6%	14 4%	4 1%	8 2%	4 1%	4 1%	4 1%	0 0%	36 10%	2 1%	3 1%
<b>Bayside Total</b>	2391 100%	219 9%	90 4%	34 1%	433 18%	71 3%	57 2%	363 15%	46 2%	227 9%	9 0%	100 4%	129 5%	130 5%	27 1%	76 3%	83 3%	33 1%	28 1%	4 0%	203 8%	9 0%	20 1%
<b>CRAF Jones Farm</b>	292 100%	23 8%	11 4%	7 2%	41 14%	8 3%	2 1%	26 9%	8 3%	40 14%	3 1%	8 3%	29 10%	21 7%	6 2%	7 2%	9 3%	3 1%	4 1%	1 0%	31 11%	2 1%	2 1%
<b>CRAF Reception</b>	833 100%	47 6%	44 5%	13 2%	152 18%	12 1%	14 2%	108 13%	19 2%	123 15%	2 0%	26 3%	66 8%	73 9%	9 1%	16 2%	36 4%	1 0%	9 1%	10 1%	48 6%	0 0%	5 1%
<b>CRAF Total</b>	1125 100%	70 6%	55 5%	20 2%	193 17%	20 2%	16 1%	134 12%	27 2%	163 14%	5 0%	34 3%	95 8%	94 8%	15 1%	23 2%	45 4%	4 0%	13 1%	11 1%	79 7%	2 0%	7 1%
<b>East Jersey Main</b>	1281 100%	66 5%	61 5%	23 2%	101 8%	13 1%	23 2%	370 29%	19 1%	113 9%	7 1%	56 4%	60 5%	64 5%	22 2%	28 2%	91 7%	13 1%	18 1%	7 1%	107 8%	10 1%	9 1%
<b>East Jersey Camp</b>	139 100%	4 3%	6 4%	0 0%	5 4%	2 1%	0 0%	36 26%	1 1%	14 10%	0 0%	3 2%	10 7%	10 7%	1 1%	4 3%	15 11%	0 0%	4 3%	1 1%	19 14%	2 1%	2 1%
<b>East Jersey Marlboro</b>	133 100%	10 8%	4 3%	0 0%	6 5%	1 1%	1 1%	28 21%	0 0%	14 11%	2 2%	3 2%	7 5%	15 11%	3 2%	3 2%	7 5%	0 0%	6 5%	0 0%	21 16%	1 1%	1 1%
<b>East Jersey Ad Seg</b>	356 100%	22 6%	11 3%	8 2%	39 11%	6 2%	10 3%	89 25%	6 2%	46 13%	1 0%	12 3%	15 4%	16 4%	4 1%	7 2%	25 7%	2 1%	4 1%	1 0%	31 9%	0 0%	1 0%
<b>East Jersey Total</b>	1909 100%	102 5%	82 4%	31 2%	151 8%	22 1%	34 2%	523 27%	26 1%	187 10%	10 1%	74 4%	92 5%	105 6%	30 2%	42 2%	138 7%	15 1%	32 2%	9 0%	178 9%	13 1%	13 1%

**Prison Complex Offenders on January 8, 2001, By County Of Commitment**

Institution	Total	Atl	Ber	Burl	Cam	Cape May	Cum	Ess	Glou	Hud	Hunt	Mer	Mid	Mon	Mor	Oc	Pas	Sal	Som	Sus	Un	War	Not Coded
Midstate	609 100%	39 6%	25 4%	18 3%	68 11%	10 2%	17 3%	100 16%	5 1%	58 10%	2 0%	28 5%	34 6%	34 6%	9 1%	30 5%	45 7%	5 1%	16 3%	6 1%	50 8%	7 1%	3 0%
NJ State Prison Ad Seg Female	27 100%	4 0%	0 0%	0 0%	4 0%	0 0%	1 0%	7 0%	0 0%	3 0%	0 0%	1 0%	0 0%	1 0%	0 0%	0 0%	1 0%	0 0%	0 0%	0 0%	3 0%	1 0%	1 0%
NJ State Prison Main	1777 100%	114 6%	84 5%	37 2%	194 11%	24 1%	46 3%	442 25%	15 1%	122 7%	5 0%	122 7%	92 5%	90 5%	18 1%	48 3%	107 6%	9 0%	27 1%	16 1%	124 7%	8 0%	33 2%
NJ State Prison Total	1804 100%	118 7%	84 5%	37 2%	198 11%	24 1%	47 3%	449 25%	15 1%	125 7%	5 0%	123 7%	92 5%	91 5%	18 1%	48 3%	108 6%	9 0%	27 1%	16 1%	127 7%	9 0%	34 2%
Northern Main	2292 100%	91 4%	130 6%	31 1%	194 8%	18 1%	29 1%	616 27%	16 1%	282 12%	8 0%	76 3%	123 5%	100 4%	37 2%	34 1%	172 8%	8 0%	47 2%	14 1%	232 10%	22 1%	12 1%
Northern Ad Seg Male	359 100%	18 5%	13 4%	4 1%	49 14%	7 2%	11 3%	92 26%	5 1%	39 11%	1 0%	11 3%	16 4%	13 4%	1 0%	14 4%	24 7%	1 0%	4 1%	1 0%	30 8%	3 1%	2 1%
Northern Total	2651 100%	109 4%	143 5%	35 1%	243 9%	25 1%	40 2%	708 27%	21 1%	321 12%	9 0%	87 3%	139 5%	113 4%	38 1%	48 2%	196 7%	9 0%	51 2%	15 1%	262 10%	25 1%	14 1%
Riverfront	1144 100%	77 7%	59 5%	27 2%	271 24%	22 2%	30 3%	165 14%	32 3%	84 7%	10 1%	47 4%	44 4%	55 5%	9 1%	29 3%	56 5%	12 1%	12 1%	6 1%	81 7%	12 1%	4 0%
Southern	1640 100%	146 9%	64 4%	27 2%	231 14%	38 2%	43 3%	306 19%	37 2%	142 9%	3 0%	84 5%	66 4%	97 6%	18 1%	48 3%	74 5%	18 1%	31 2%	5 0%	136 8%	10 1%	16 1%
South Woods	3323 100%	321 10%	139 4%	64 2%	481 14%	68 2%	89 3%	523 16%	51 2%	301 9%	17 1%	151 5%	162 5%	202 6%	53 2%	110 3%	147 4%	31 1%	47 1%	15 0%	289 9%	37 1%	25 1%
<b>SUBTOTAL PRISON MALES</b>	<b>16596 100%</b>	<b>1201 7%</b>	<b>741 4%</b>	<b>293 2%</b>	<b>2269 14%</b>	<b>300 2%</b>	<b>373 2%</b>	<b>3271 20%</b>	<b>260 2%</b>	<b>1608 10%</b>	<b>70 0%</b>	<b>728 4%</b>	<b>853 5%</b>	<b>921 6%</b>	<b>217 1%</b>	<b>454 3%</b>	<b>892 5%</b>	<b>136 1%</b>	<b>257 2%</b>	<b>87 1%</b>	<b>1405 8%</b>	<b>124 1%</b>	<b>136 1%</b>

### Prison Complex Offenders on January 8, 2001, By County Of Commitment

<i>Institution</i>	Total	Atl	Ber	Burl	Cam	Cape May	Cum	Ess	Glou	Hud	Hunt	Mer	Mid	Mon	Mor	Oc	Pas	Sal	Som	Sus	Un	War	Not Coded
ADTC	637 100%	33 5%	30 5%	24 4%	91 14%	19 3%	28 4%	48 8%	18 3%	31 5%	7 1%	30 5%	56 9%	46 7%	25 4%	29 5%	44 7%	8 1%	14 2%	11 2%	27 4%	18 3%	0 0%
<b>Subtotal</b>	<b>17233 100%</b>	<b>1234 7%</b>	<b>771 4%</b>	<b>317 2%</b>	<b>2360 14%</b>	<b>319 2%</b>	<b>401 2%</b>	<b>3319 19%</b>	<b>278 2%</b>	<b>1639 10%</b>	<b>77 0%</b>	<b>758 4%</b>	<b>909 5%</b>	<b>967 6%</b>	<b>242 1%</b>	<b>483 3%</b>	<b>936 5%</b>	<b>144 1%</b>	<b>271 2%</b>	<b>98 1%</b>	<b>1432 8%</b>	<b>142 1%</b>	<b>136 1%</b>
Mahan - Female Prison	1075 100%	118 11%	60 6%	14 1%	136 13%	18 2%	21 2%	121 11%	22 2%	71 7%	5 0%	48 4%	53 5%	81 8%	12 1%	40 4%	83 8%	5 0%	28 3%	10 1%	114 11%	11 1%	4 0%
<b>Total Prison Complex</b>	<b>18,308 100%</b>	<b>1352 7%</b>	<b>831 5%</b>	<b>331 2%</b>	<b>2496 14%</b>	<b>337 2%</b>	<b>422 2%</b>	<b>3440 19%</b>	<b>300 2%</b>	<b>1710 9%</b>	<b>82 0%</b>	<b>806 4%</b>	<b>962 5%</b>	<b>1048 6%</b>	<b>254 1%</b>	<b>523 3%</b>	<b>1019 6%</b>	<b>149 1%</b>	<b>299 2%</b>	<b>108 1%</b>	<b>1546 8%</b>	<b>153 1%</b>	<b>140 1%</b>

### Youth Complex Offenders on January 8, 2001, By County Of Commitment

Institution	Total	Atl	Ber	Burl	Cam	Cape May	Cum	Ess	Glou	Hud	Hunt	Mer	Mid	Mon	Mor	Oc	Pas	Sal	Som	Sus	Un	War	Not Coded
<b>Garden State</b>	1793 100%	127 7%	42 2%	48 3%	284 16%	35 2%	46 3%	312 17%	35 2%	167 9%	8 0%	77 4%	128 7%	87 5%	20 1%	59 3%	96 5%	17 1%	23 1%	15 1%	143 8%	22 1%	2 0%
<b>Mountianview Main</b>	1171 100%	57 5%	31 3%	13 1%	178 15%	18 2%	14 1%	230 20%	14 1%	131 11%	5 0%	34 3%	79 7%	66 6%	16 1%	25 2%	95 8%	10 1%	21 2%	5 0%	118 10%	7 1%	4 0%
<b>Mountianview Stokes</b>	111 100%	2 2%	5 5%	0 0%	16 14%	6 5%	0 0%	17 15%	5 5%	13 12%	0 0%	4 4%	6 5%	5 5%	2 2%	3 3%	9 8%	0 0%	0 0%	0 0%	16 14%	1 1%	1 1%
<b>Mountianview Total</b>	1282 100%	59 5%	36 3%	13 1%	194 15%	24 2%	14 1%	247 19%	19 1%	144 11%	5 0%	38 3%	85 7%	71 6%	18 1%	28 2%	104 8%	10 1%	21 2%	5 0%	134 10%	8 1%	5 0%
<b>Wagner Main</b>	1224 100%	82 7%	54 4%	25 2%	179 15%	16 1%	20 2%	239 20%	26 2%	130 11%	4 0%	44 4%	67 5%	61 5%	12 1%	36 3%	67 5%	8 1%	13 1%	2 0%	131 11%	3 0%	5 0%
<b>Wagner Ad Seg</b>	189 100%	10 5%	5 3%	4 2%	30 16%	1 1%	3 2%	49 26%	2 1%	31 16%	2 1%	9 5%	11 6%	5 3%	0 0%	5 3%	12 6%	1 1%	0 0%	0 0%	9 5%	0 0%	0 0%
<b>Wagner Adult Boot Camp</b>	134 100%	13 10%	2 1%	2 1%	31 23%	1 1%	1 1%	11 8%	2 1%	17 13%	1 1%	3 2%	10 7%	7 5%	1 1%	5 4%	9 7%	2 1%	4 3%	0 0%	12 9%	0 0%	0 0%
<b>Wagner Total</b>	1547 100%	105 7%	61 4%	31 2%	240 16%	18 1%	24 2%	299 19%	30 2%	178 12%	7 0%	56 4%	88 6%	73 5%	13 1%	46 3%	88 6%	11 1%	17 1%	2 0%	152 10%	3 0%	5 0%
<b>Total Youth</b>	4622 100%	291 6%	61 1%	23 0%	101 2%	13 0%	23 0%	370 8%	19 0%	113 2%	7 0%	56 1%	60 1%	64 1%	22 0%	28 1%	91 2%	13 0%	18 0%	7 0%	107 2%	10 0%	9 0%

**Offenders In Other Facilities on January 8, 2001, By County Of Commitment**

Institution	Total	Atl	Ber	Burl	Cam	Cape May	Cum	Ess	Glou	Hud	Hunt	Mer	Mid	Mon	Mor	Oc	Pas	Sal	Som	Sus	Un	War	Not Coded
Central Medical	19 100%	0 0%	1 5%	0 0%	5 26%	0 0%	0 0%	2 11%	0 0%	1 5%	0 0%	2 11%	1 5%	2 11%	0 0%	1 5%	2 11%	0 0%	0 0%	0 0%	2 11%	0 0%	0 0%
County Jail	2936 100%	211 7%	154 5%	11 0%	264 9%	13 0%	95 3%	435 15%	22 1%	194 7%	24 1%	125 4%	156 5%	241 8%	27 1%	35 1%	747 25%	38 1%	40 1%	10 0%	82 3%	12 0%	0 0%
EM/HC	136 100%	10 7%	4 3%	2 1%	14 10%	3 2%	3 2%	25 18%	2 1%	15 11%	0 0%	3 2%	7 5%	4 3%	1 1%	3 2%	17 13%	1 1%	2 1%	2 1%	17 13%	1 1%	0 0%
Halfway House	2601 100%	200 8%	156 6%	38 1%	377 14%	54 2%	37 1%	449 17%	43 2%	286 11%	6 0%	90 3%	108 4%	156 6%	24 1%	74 3%	145 6%	36 1%	42 2%	9 0%	251 10%	15 1%	5 0%
<b>Total Other Facilities</b>	<b>5692 100%</b>	<b>421 7%</b>	<b>315 6%</b>	<b>51 1%</b>	<b>660 12%</b>	<b>70 1%</b>	<b>135 2%</b>	<b>911 16%</b>	<b>67 1%</b>	<b>496 9%</b>	<b>30 1%</b>	<b>220 4%</b>	<b>272 5%</b>	<b>403 7%</b>	<b>52 1%</b>	<b>113 2%</b>	<b>911 16%</b>	<b>75 1%</b>	<b>84 1%</b>	<b>21 0%</b>	<b>352 6%</b>	<b>28 0%</b>	<b>5 0%</b>