

**OFFENDERS IN NEW JERSEY CORRECTIONAL INSTITUTIONS
ON JANUARY 8, 2001, BY AGE**

The age of the offender is the chronological age as of January 1, 2001.

OFFENDERS IN CORRECTIONAL INSTITUTIONS ON JANUARY 8, 2001, BY AGE

Age	Total		Prison Males		Youth Complex		ADTC		Edna Mahan		Other Facilities	
	#	%	#	%	#	%	#	%	#	%	#	%
TOTAL OFFENDERS	28,622	100%	16,596	100%	4,622	100%	637	100%	1,075	100%	5,692	100%
< 17 Years	5	0%	0	0%	4	0%	0	0%	0	0%	1	0%
17 Years	19	0%	1	0%	18	0%	0	0%	0	0%	0	0%
18-20 Years	1,104	4%	157	1%	774	17%	6	1%	25	2%	142	2%
21-22 Years	2,300	8%	451	3%	1392	30%	10	2%	58	5%	389	7%
23-24 Years	2,377	8%	719	4%	1102	24%	6	1%	58	5%	492	9%
25-27 Years	3,354	12%	1456	9%	1055	23%	18	3%	92	9%	733	13%
28-30 Years	3,597	13%	2354	14%	212	5%	39	6%	126	12%	866	15%
31-33 Years	3,335	12%	2367	14%	40	1%	44	7%	163	15%	721	13%
34-36 Years	3,082	11%	2186	13%	16	0%	75	12%	156	15%	649	11%
37-39 Years	2,734	10%	1949	12%	7	0%	71	11%	127	12%	580	10%
40-44 Years	3,150	11%	2296	14%	2	0%	101	16%	141	13%	610	11%
45-49 Years	1,751	6%	1285	8%	0	0%	89	14%	73	7%	304	5%
50-54 Years	969	3%	726	4%	0	0%	84	13%	35	3%	124	2%
55-59 Years	454	2%	359	2%	0	0%	34	5%	13	1%	48	1%
60-64 Years	199	1%	152	1%	0	0%	23	4%	4	0%	20	0%
65+ Years	192	1%	138	1%	0	0%	37	6%	4	0%	13	0%
Unspec	0	0%	0	0%	0	0%	0	0%	0	0%	0	0%

- The median age for adult residents is 32 years.
- Four percent (4%) of all adult offenders are 20 years of age or younger.
- Forty-one percent (41%) of all adult offenders are between the ages of 21-30.
- Thirty-two percent (32%) of all adult offenders are 31 to 39 years of age.
- Twenty-three percent (23%) of all adult offenders are 40 years of age and older.

Prison Complex Offenders on January 8, 2001, By Age

Institution	Total	< 17 Years	17 Years	18-20 Years	21-22 Years	23-24 Years	25-27 Years	28-30 Years	31-33 Years	34-36 Years	37-39 Years	40-44 Years	45-49 Years	50-54 Years	55-59 Years	60-64 Years	65+ Years	Unspec
Bayside	1343	0	0	0	22	54	142	230	189	179	170	184	98	49	18	2	6	0
 Main	100%	0%	0%	0%	2%	4%	11%	17%	14%	13%	13%	14%	7%	4%	1%	0%	0%	0%
Bayside	703	0	0	0	1	10	44	112	113	113	83	104	63	36	15	5	4	0
 Farm	100%	0%	0%	0%	0%	1%	6%	16%	16%	16%	12%	15%	9%	5%	2%	1%	1%	0%
Bayside	345	0	0	1	0	4	22	59	71	50	40	60	24	11	3	0	0	0
 Ancora	100%	0%	0%	0%	0%	1%	6%	17%	21%	14%	12%	17%	7%	3%	1%	0%	0%	0%
Bayside Total	2391	0	0	1	23	68	208	401	373	342	293	348	185	96	36	7	10	0
	100%	0%	0%	0%	1%	3%	9%	17%	16%	14%	12%	15%	8%	4%	2%	0%	0%	0%
CRAF	292	0	0	0	3	4	21	43	47	44	39	56	26	8	1	0	0	0
 Jones Farm	100%	0%	0%	0%	1%	1%	7%	15%	16%	15%	13%	19%	9%	3%	0%	0%	0%	0%
CRAF	833	0	1	60	91	94	105	99	86	79	69	72	39	22	8	6	2	0
 Reception	100%	0%	0%	7%	11%	11%	13%	12%	10%	9%	8%	9%	5%	3%	1%	1%	0%	0%
CRAF Total	1125	0	1	60	94	98	126	142	133	123	108	128	65	30	9	6	2	0
	100%	0%	0%	5%	8%	9%	11%	13%	12%	11%	10%	11%	6%	3%	1%	1%	0%	0%
East Jersey	1281	0	0	1	9	22	87	149	140	171	179	210	135	82	54	25	17	0
 Main	100%	0%	0%	0%	1%	2%	7%	12%	11%	13%	14%	16%	11%	6%	4%	2%	1%	0%
East Jersey	139	0	0	0	2	2	3	23	25	16	19	27	12	8	2	0	0	0
 Camp	100%	0%	0%	0%	1%	1%	2%	17%	18%	12%	14%	19%	9%	6%	1%	0%	0%	0%
East Jersey	133	0	0	0	2	0	6	27	15	25	17	16	11	8	4	1	1	0
 Marlboro	100%	0%	0%	0%	2%	0%	5%	20%	11%	19%	13%	12%	8%	6%	3%	1%	1%	0%
East Jersey	356	0	0	14	43	44	42	42	50	34	25	38	14	8	0	1	1	0
 Ad Seg	100%	0%	0%	4%	12%	12%	12%	12%	14%	10%	7%	11%	4%	2%	0%	0%	0%	0%
East Jersey Total	1909	0	0	15	56	68	138	241	230	246	240	291	172	106	60	27	19	0
	100%	0%	0%	1%	3%	4%	7%	13%	12%	13%	13%	15%	9%	6%	3%	1%	1%	0%

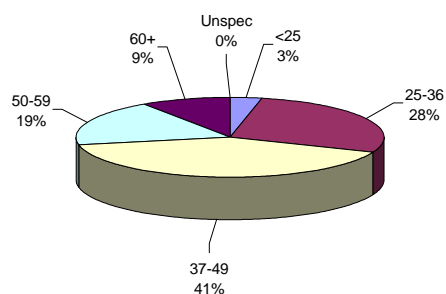
Prison Complex Offenders on January 8, 2001, By Age

Institution	Total	< 17 Years	17 Years	18-20 Years	21-22 Years	23-24 Years	25-27 Years	28-30 Years	31-33 Years	34-36 Years	37-39 Years	40-44 Years	45-49 Years	50-54 Years	55-59 Years	60-64 Years	65+ Years	Unspec
Midstate	609 100%	0 0%	0 0%	0 0%	4 1%	13 2%	49 8%	78 13%	92 15%	74 12%	79 13%	91 15%	54 9%	31 5%	23 4%	11 2%	10 2%	0 0%
NJ State Prison Ad Seg Female	27 100%	0 0%	0 0%	0 0%	4 15%	3 11%	3 11%	7 26%	3 11%	5 19%	1 4%	1 4%	0 0%	0 0%	0 0%	0 0%	0 0%	0 0%
NJ State Prison Main	1777 100%	0 0%	0 0%	13 1%	60 3%	79 4%	154 9%	192 11%	195 11%	230 13%	187 10%	260 14%	168 9%	117 6%	61 3%	31 2%	30 2%	0 0%
NJ State Prison Total	1804 100%	0 0%	0 0%	13 1%	64 4%	82 5%	157 9%	199 11%	198 11%	235 13%	188 10%	261 14%	168 9%	117 6%	61 3%	31 2%	30 2%	0 0%
Northern Main	2292 100%	0 0%	0 0%	24 1%	66 3%	130 6%	231 10%	350 15%	324 14%	300 13%	265 12%	294 13%	180 8%	76 3%	34 1%	11 0%	7 0%	0 0%
Northern Ad Seg Male	359 100%	0 0%	0 0%	19 5%	42 12%	45 13%	63 18%	58 16%	45 13%	25 7%	19 5%	26 7%	10 3%	3 1%	4 1%	0 0%	0 0%	0 0%
Northern Total	2651 100%	0 0%	0 0%	43 2%	108 4%	175 7%	294 11%	408 15%	369 14%	325 12%	284 11%	320 12%	190 7%	79 3%	38 1%	11 0%	7 0%	0 0%
Riverfront	1144 100%	0 0%	0 0%	2 0%	23 2%	55 5%	97 8%	169 15%	166 15%	156 14%	130 11%	166 15%	89 8%	46 4%	27 2%	9 1%	9 1%	0 0%
Southern	1640 100%	0 0%	0 0%	1 0%	9 1%	38 2%	137 8%	253 15%	287 18%	227 14%	226 14%	233 14%	110 7%	69 4%	32 2%	9 1%	9 1%	0 0%
South Woods	3323 100%	0 0%	0 0%	22 1%	70 2%	122 4%	250 8%	463 14%	519 16%	458 14%	401 12%	458 14%	252 8%	152 5%	73 2%	41 1%	42 1%	0 0%
SUBTOTAL PRISON MALES	16596 100%	0 0%	1 0%	157 1%	451 3%	719 4%	1456 9%	2354 14%	2367 14%	2186 13%	1949 12%	2296 14%	1285 8%	726 4%	359 2%	152 1%	138 1%	0 0%

Prison Complex Offenders on January 8, 2001, By Age

Institution	Total	< 17 Years	17 Years	18-20 Years	21-22 Years	23-24 Years	25-27 Years	28-30 Years	31-33 Years	34-36 Years	37-39 Years	40-44 Years	45-49 Years	50-54 Years	55-59 Years	60-64 Years	65+ Years	Unspec
ADTC	637	0	0	6	10	6	18	39	44	75	71	101	89	84	34	23	37	0
	100%	0%	0%	1%	2%	1%	3%	6%	7%	12%	11%	16%	14%	13%	5%	4%	6%	0%
Subtotal	17233	0	1	163	461	725	1474	2393	2411	2261	2020	2397	1374	810	393	175	175	0
	100%	0%	0%	1%	3%	4%	9%	14%	14%	13%	12%	14%	8%	5%	2%	1%	1%	0%
Mahan - Female Prison	1075	0	0	25	58	58	92	126	163	156	127	141	73	35	13	4	4	0
	100%	0%	0%	2%	5%	5%	9%	12%	15%	15%	12%	13%	7%	3%	1%	0%	0%	0%
Total Prison Complex	18308	0	1	188	519	783	1566	2519	2574	2417	2147	2538	1447	845	406	179	179	0
	100%	0%	0%	1%	3%	4%	9%	14%	14%	13%	12%	14%	8%	5%	2%	1%	1%	0%

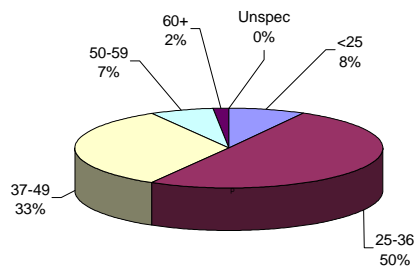
ADTC



The median age at ADTC is 42 years.

Twenty-eight percent (28%) of the ADTC offenders are 50 years of age or older. This may be compared with 8% of male prison complex offenders and 5% of female (Edna Mahan) offenders.

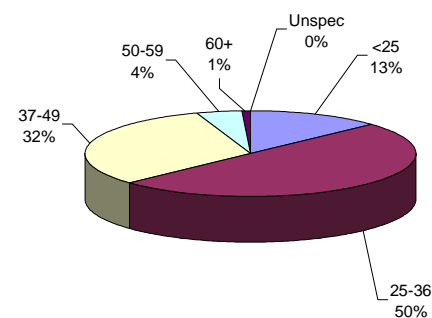
PRISON MALES



The median age for prison complex males (excluding ADTC) is 35 years.

Fifty percent (50%) of the male prison complex population are age 25 to 36.

FEMALE FACILITIES



The median age for female inmates (Edna Mahan) is 34 years.

Fifty percent (50%) of the women at Edna Mahan are age 25 to 36.

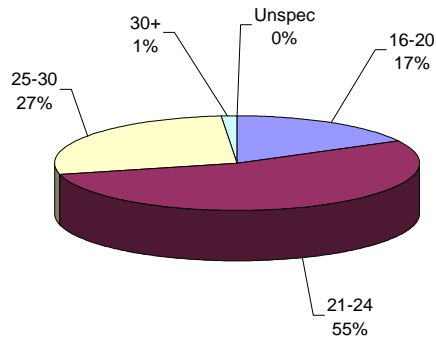
Youth Complex Offenders on January 8, 2001, By Age

Institution	Total	< 17 Years	17 Years	18-20 Years	21-22 Years	23-24 Years	25-27 Years	28-30 Years	31-33 Years	34-36 Years	37-39 Years	40-44 Years	45-49 Years	50-54 Years	55-59 Years	60-64 Years	65+ Years	Unspec
Garden State	1793	4	11	302	548	406	417	76	15	10	2	2	0	0	0	0	0	0
	100%	0%	1%	17%	31%	23%	23%	4%	1%	1%	0%	0%	0%	0%	0%	0%	0%	0%
Mountainview Main	1171	0	3	224	352	296	250	42	3	1	0	0	0	0	0	0	0	0
	100%	0%	0%	19%	30%	25%	21%	4%	0%	0%	0%	0%	0%	0%	0%	0%	0%	0%
Mountainview Stokes	111	0	0	15	37	37	16	6	0	0	0	0	0	0	0	0	0	0
	100%	0%	0%	14%	33%	33%	14%	5%	0%	0%	0%	0%	0%	0%	0%	0%	0%	0%
Mountainview Total	1282	0	3	239	389	333	266	48	3	1	0	0	0	0	0	0	0	0
	100%	0%	0%	19%	30%	26%	21%	4%	0%	0%	0%	0%	0%	0%	0%	0%	0%	0%
Wagner Main	1,224	0	3	143	334	307	329	79	21	4	4	0	0	0	0	0	0	0
	100%	0%	0%	12%	27%	25%	27%	6%	2%	0%	0%	0%	0%	0%	0%	0%	0%	0%
Wagner Ad Seg	189	0	0	39	75	32	32	8	1	1	1	0	0	0	0	0	0	0
	100%	0%	0%	21%	40%	17%	17%	4%	1%	1%	1%	0%	0%	0%	0%	0%	0%	0%
Wagner Adult Boot Camp	134	0	1	51	46	24	11	1	0	0	0	0	0	0	0	0	0	0
	100%	0%	1%	38%	34%	18%	8%	1%	0%	0%	0%	0%	0%	0%	0%	0%	0%	0%
Wagner Total	1547	0	4	233	455	363	372	88	22	5	5	0	0	0	0	0	0	0
	100%	0%	0%	15%	29%	23%	24%	6%	1%	0%	0%	0%	0%	0%	0%	0%	0%	0%
Total Youth	4,622	4	18	774	1392	1102	1055	212	40	16	7	2	0	0	0	0	0	0
	100%	0%	0%	17%	30%	24%	23%	5%	1%	0%	0%	0%	0%	0%	0%	0%	0%	0%

Offenders In Other Facilities on January 8, 2001, By Age

Institution	Total	< 17 Years	17 Years	18-20 Years	21-22 Years	23-24 Years	25-27 Years	28-30 Years	31-33 Years	34-36 Years	37-39 Years	40-44 Years	45-49 Years	50-54 Years	55-59 Years	60-64 Years	65+ Years	Unspec
Central Medical	19 100%	0 0%	0 0%	0 0%	1 5%	0 0%	0 0%	2 11%	0 0%	1 5%	1 5%	4 21%	2 11%	1 5%	1 5%	2 11%	4 21%	0 0%
County Jail	2936 100%	1 0%	0 0%	60 2%	182 6%	255 9%	369 13%	449 15%	376 13%	353 12%	311 11%	335 11%	153 5%	57 2%	22 1%	10 0%	3 0%	0 0%
EM/HC	136 100%	0 0%	0 0%	13 10%	16 12%	17 13%	16 12%	16 12%	16 12%	12 9%	6 4%	15 11%	7 5%	2 1%	0 0%	0 0%	0 0%	0 0%
Halfway House	2601 100%	0 0%	0 0%	69 3%	190 7%	220 8%	348 13%	399 15%	329 13%	283 11%	262 10%	256 10%	142 5%	64 2%	25 1%	8 0%	6 0%	0 0%
Total Other Facilities	5,692 100%	1 0%	0 0%	142 2%	389 7%	492 9%	733 13%	866 15%	721 13%	649 11%	580 10%	610 11%	304 5%	124 2%	48 1%	20 0%	13 0%	0 0%

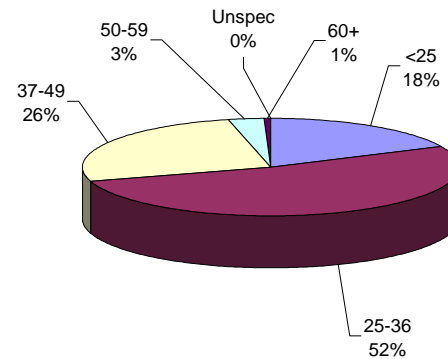
YOUTH COMPLEX



The median age for the youth complex is 23 years.

Eighty-one percent (81%) of all youth complex inmates are between the ages of 21 and 30.

OFFENDERS IN OTHER FACILITIES



The median age for offenders in 'other facilities' is 31 years.

The median age for offenders housed in county jail is 32 years, while those offenders on electronic monitoring/ home confinement is 28 years. Offenders in halfway houses have a median age of 31 years.