



New Jersey Highlands Council
Regional Master Plan
Land Use Capability Zone Map Atlas

Final Draft November 2007

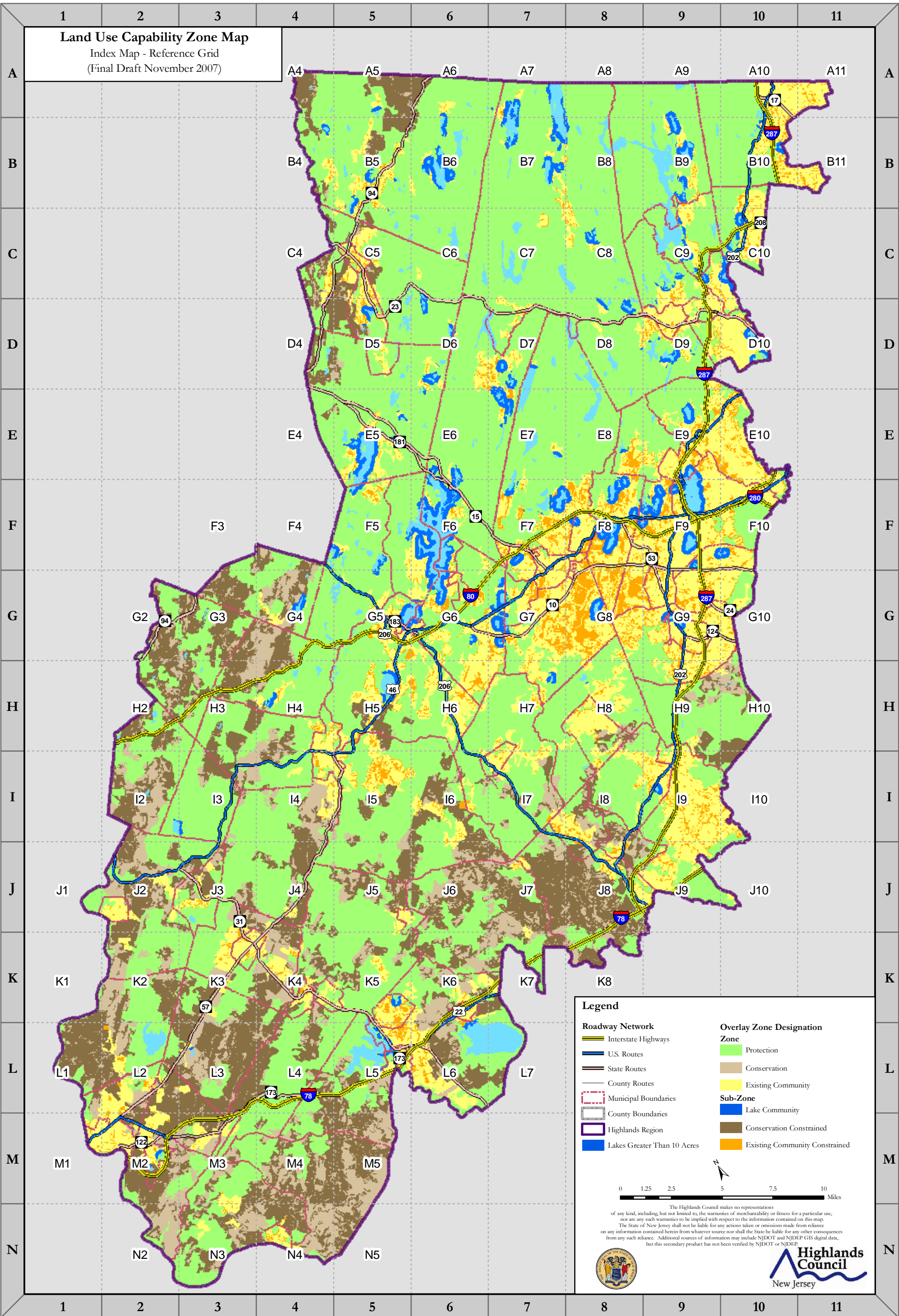
Instructions: Find your municipality of interest in the table below. Scroll down to the Reference Grid Map and click on the appropriate grid cell for an enlarged view.

COUNTY	MUNICIPALITY	GRID NUMBER
BERGEN		
	MAHWAH TOWNSHIP	A10, A11, A9, B10, B11, B9
	OAKLAND BOROUGH	B10, B9, C10, C9
HUNTERDON		
	ALEXANDRIA TOWNSHIP	M3, M4, M5, N4, N5
	BETHLEHEM TOWNSHIP	K4, K5, L3, L4, L5, M3, M4
	BLOOMSBURY BOROUGH	L3, M3
	CALIFON BOROUGH	J5, J6, K5
	CLINTON TOWN	L5, L6
	CLINTON TOWNSHIP	K5, K6, K7, L5, L6, L7
	GLEN GARDNER BOROUGH	K4, K5
	HAMPTON BOROUGH	K4
	HIGH BRIDGE BOROUGH	K5, K6, L5
	HOLLAND TOWNSHIP	M3, M4, N2, N3, N4
	LEBANON BOROUGH	K6
	LEBANON TOWNSHIP	J4, J5, J6, K4, K5, K6
	MILFORD BOROUGH	N4
	TEWKSBURY TOWNSHIP	J5, J6, J7, K6, K7
	UNION TOWNSHIP	K5, L4, L5, M4, M5
MORRIS		
	BOONTON TOWN	E9, F9
	BOONTON TOWNSHIP	E8, E9, F9
	BUTLER BOROUGH	D8, D9
	BYRAM TOWNSHIP	G6, E5, F4, F5, G4, G5, G6
	CHESTER BOROUGH	H7, I6, I7
	CHESTER TOWNSHIP	H6, H7, I6, I7, J7
	DENVILLE TOWNSHIP	E8, E9, F8, F9, G8
	DOVER TOWN	F7, F8, G7, G8
	HANOVER TOWNSHIP	F10, F9, G10, G9
	HARDING TOWNSHIP	G10, H10, H8, H9, I10, I9
	HOPATCONG BOROUGH	F6, E5, E6, F5, F6, G5, G6
	JEFFERSON TOWNSHIP	C6, D6, D7, E6, E7, F6, F7, F6
	KINNELON BOROUGH	D8, D9, E8, E9
	MENDHAM BOROUGH	H7, H8, I8
	MENDHAM TOWNSHIP	G8, H7, H8, H9, I7, I8
	MINE HILL TOWNSHIP	G7
	MONTVILLE TOWNSHIP	D10, D9, E10, E9, F10
	MORRIS PLAINS BOROUGH	F9, G8, G9
	MORRIS TOWNSHIP	G10, G8, G9, H10, H8, H9
	MORRISTOWN TOWN	G9
	MOUNT ARLINGTON BOROUGH	F6, G6
	MOUNT OLIVE TOWNSHIP	G4, G5, G6, H4, H5, H6, I5, I6
	MOUNTAIN LAKES BOROUGH	E9, F8, F9
	NETCONG BOROUGH	G5, G6
	PARSIPPANY-TROY HILLS TWP	E10, E9, F10, F8, F9, G8, G9
	PEQUANNOCK TOWNSHIP	D10, D9
	POMPTON LAKES BOROUGH	D10, C10, C9, D10, D9
	RANDOLPH TOWNSHIP	F8, G7, G8, H7, H8
	RIVERDALE BOROUGH	C9, D10, D9
	ROCKAWAY BOROUGH	F8
	ROCKAWAY TOWNSHIP	D7, D8, E7, E8, F7, F8

MORRIS - CONTINUED		
	ROXBURY TOWNSHIP	F6, F7, G6, G7, H6, H7, G6
	VICTORY GARDENS BOROUGH	F8, G8
	WASHINGTON TOWNSHIP	H5, H6, I4, I5, I6, I7, J4, J5, J6, J7, J3, J4, K3, K4
	WHARTON BOROUGH	F7, G7
PASSAIC		
	BLOOMINGDALE BOROUGH	C8, C9, D8, D9
	POMPTON LAKES BOROUGH	D10, C10, C9, D10, D9
	RINGWOOD BOROUGH	A8, A9, B8, B9, C8, C9
	WANAQUE BOROUGH	B9, C10, C8, C9
	WEST MILFORD TOWNSHIP	A7, A8, B6, B7, B8, C6, C7, C8, D6, D7, D8
SOMERSET		
	BEDMINSTER TOWNSHIP	I7, J7, J8, J9, K7, K8
	BERNARDS TOWNSHIP	H9, I10, I8, I9, J10, J8, J9
	BERNARDSVILLE BOROUGH	H8, H9, I8, I9
	FAR HILLS BOROUGH	I8, I9, J8, J9
	PEAPACK GLADSTONE BOROUGH	I7, I8, J7, J8
SUSSEX		
	BYRAM TOWNSHIP	G6, E5, F4, F5, G4, G5, G6
	FRANKLIN BOROUGH	C5, D5
	GREEN TOWNSHIP	F3, F4, G3, G4
	HAMBURG BOROUGH	C5
	HARDYSTON TOWNSHIP	B4, C4, C5, C6, D4, D5, D6
	HOPATCONG BOROUGH	F6, E5, E6, F5, F6, G5, G6
	JEFFERSON TOWNSHIP	C6, D6, D7, E6, E7, F6, F7, F6
	OGDENSBURG BOROUGH	D5
	ROXBURY TOWNSHIP	F6, F7, G6, G7, H6, H7, G6
	SPARTA TOWNSHIP	D4, D5, D6, E4, E5, E6, F5
	STANHOPE BOROUGH	G5, G6
	VERNON TOWNSHIP	A4, A5, A6, A7, B4, B5, B6, B7, C4, C5, C6
WARREN		
	ALLAMUCHY TOWNSHIP	G3, G4, G5, H3, H4, H5
	ALPHA BOROUGH	M2
	BELVIDERE TOWN	J1, J2
	FRANKLIN TOWNSHIP	K2, K3, K4, L2, L3, L4, M3
	FRELINGHUYSEN TOWNSHIP	G2, G3, H2, H3
	GREENWICH TOWNSHIP	L2, L3, M2, M3
	HACKETTSTOWN TOWN	H4, H5, I4, I5
	HARMONY TOWNSHIP	K1, K2, K3, L1, L2
	HOPE TOWNSHIP	H2, H3, I2, I3
	INDEPENDENCE TOWNSHIP	H3, H4, I3, I4
	LIBERTY TOWNSHIP	H3, I2, I3
	LOPATCONG TOWNSHIP	L1, L2, M1, M2
	MANSFIELD TOWNSHIP	I3, I4, I5, J3, J4
	OXFORD TOWNSHIP	I3, J2, J3, K3
	PHILLIPSBURG TOWN	M1, M2
	POHATCONG TOWNSHIP	M2, M3, N2, N3
	WASHINGTON BOROUGH	J3, J4, K3, K4
	WASHINGTON TOWNSHIP	H5, H6, I4, I5, I6, I7, J4, J5, J6, J7, J3, J4, K3, K4
	WHITE TOWNSHIP	I2, I3, J1, J2, J3, K2, K3

Land Use Capability Zone Map

Index Map - Reference Grid
(Final Draft November 2007)




Legend

Roadway Network	Overlay Zone Designation Zone
Interstate Highways	Protection
U.S. Routes	Conservation
State Routes	Existing Community
County Routes	Sub-Zone
Municipal Boundaries	Lake Community
County Boundaries	Conservation Constrained
Highlands Region	Existing Community Constrained
Lakes Greater Than 10 Acres	

0 1.25 2.5 5 7.5 10 Miles

The Highlands Council makes no representations of any kind, including, but not limited to, the warranties of merchantability or fitness for a particular use, nor are any such warranties to be implied with respect to the information contained on this map. The State of New Jersey shall not be liable for any actions taken or omissions made from reliance on any information contained herein from whatever source nor shall the State be liable for any other consequences from any such reliance. Additional sources of information may include NJDOT and NJDEP GIS digital data, but this secondary product has not been verified by NJDOT or NJDEP.



Highlands Council
New Jersey