

National Park Service Biological Resource Management Division



Exotic Plant Management Teams

Alaska

**Mid-Atlantic
Cooperative**

California

**National Capital
Region**

**Chihuahuan Desert/Southern
Shortgrass Prairie**

**North Coast
Cascades Network**

Colorado Plateau

Northeast

Florida/Caribbean Partnership

Northern Great Plains

Great Lakes

Northern Rockies

Gulf Coast

Pacific Islands

Lake Mead

Southeast



Worthington Glacier, AK - Photo by Judy Daniels



Haleakala NP, Maui - Photo by Judy Daniels

EXPERIENCE
YOUR
AMERICA

National Park Service Biological Resource Management Division

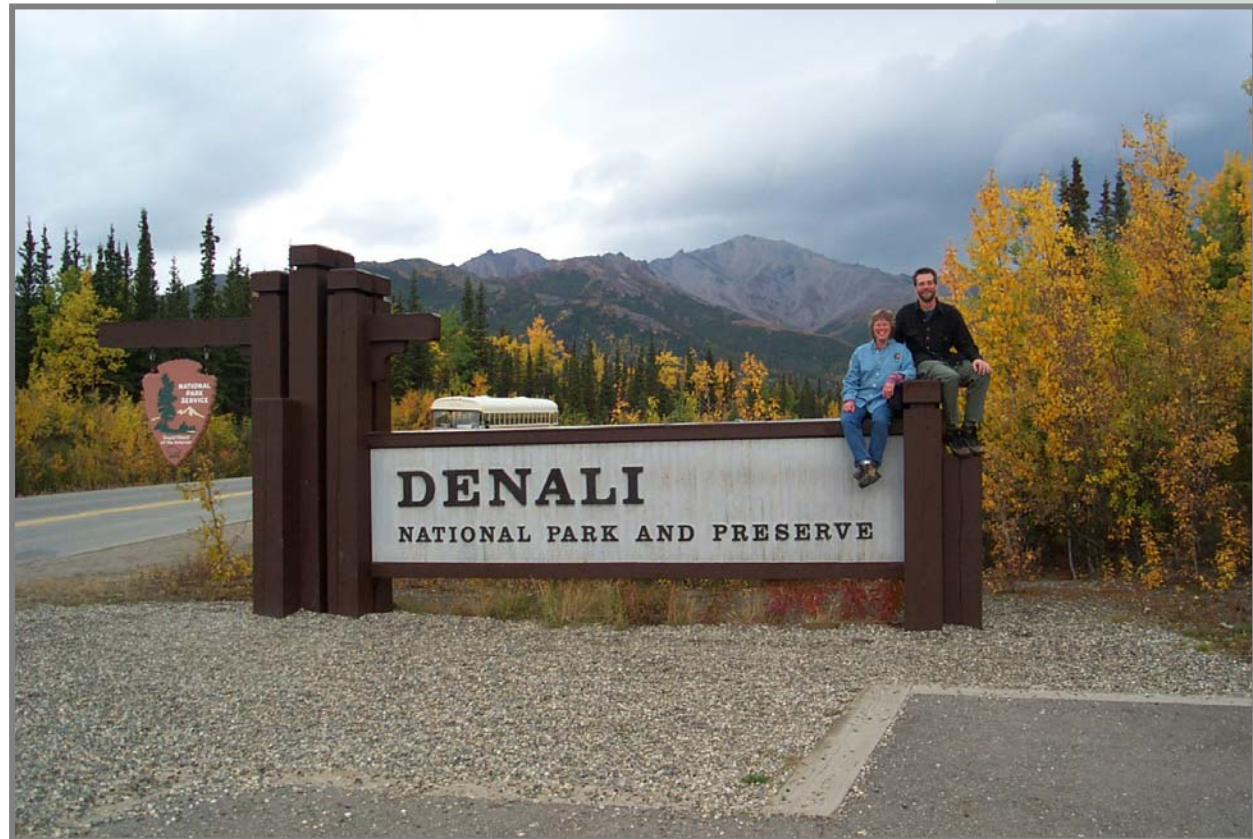


EXPERIENCE
YOUR
AMERICA

Alaska Exotic Plant Management Team



Roseann Densmore (not pictured) and
Chris McKee: USGS, BRD



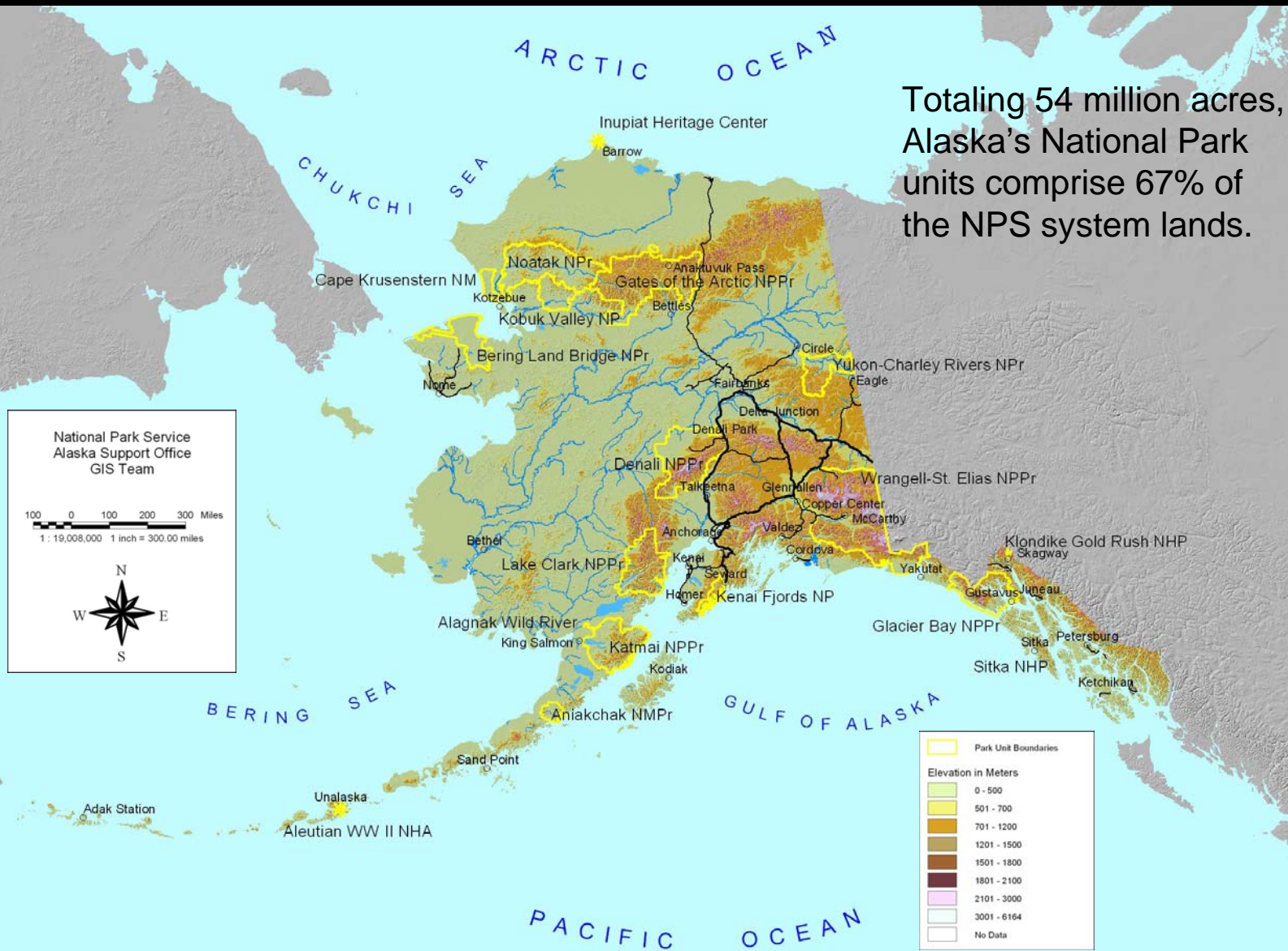
Page Spencer and Jeff Heys: NPS, Alaska Regional Office

National Park Service Biological Resource Management Division



EXPERIENCE
YOUR
AMERICA

Totalling 54 million acres,
Alaska's National Park
units comprise 67% of
the NPS system lands.



National Park Service
Alaska Support Office
GIS Team

Scale: 1 : 19,008,000 1 inch = 300.00 miles

National Park Service Biological Resource Management Division



EXPERIENCE
YOUR
AMERICA

Alaska

Top Ten Species

1. **White/yellow sweetclover**
 - *Melilotus alba/officinalis*
2. **Bird (tufted) vetch**
 - *Vicia cracca*
3. **Japanese knotweed**
 - *Polygonum cuspidatum*
4. **Narrowleaf hawksbeard**
 - *Crepis tectorum*
5. **Butter and eggs (toadflax)**
 - *Linaria vulgaris*
6. **Oxeye-daisy**
 - *Leucanthemum vulgare*
7. **European mountain ash**
 - *Sorbus aucuparia*
8. **Common dandelion**
 - *Taraxacum officinale* ssp. *officinale*
9. **European stickseed**
 - *Lappula squarrosa*
10. **Bigleaf lupine**
 - *Lupinus polyphyllus*



White sweetclover on Nenana River bar



Bird vetch in Denali National Park (purple flowers)

National Park Service Biological Resource Management Division



Alaska



EXPERIENCE
YOUR
AMERICA

Exotic plants in Alaska occur primarily on human-disturbed soils, but the state's vast tracts of floodplains and post-glacial soils offer them similar habitats for invasion.

National Park Service Biological Resource Management Division



EXPERIENCE
YOUR
AMERICA

Alaska

Site Recovery



**Narrowleaf hawksbeard infestation in Denali N.P.
before (yellow flowers)...**

**Controlling source populations of exotic plants
is of particular importance in Alaska, where it may
still be possible to prevent widespread invasion.**

...and after a pulling effort (none!)

