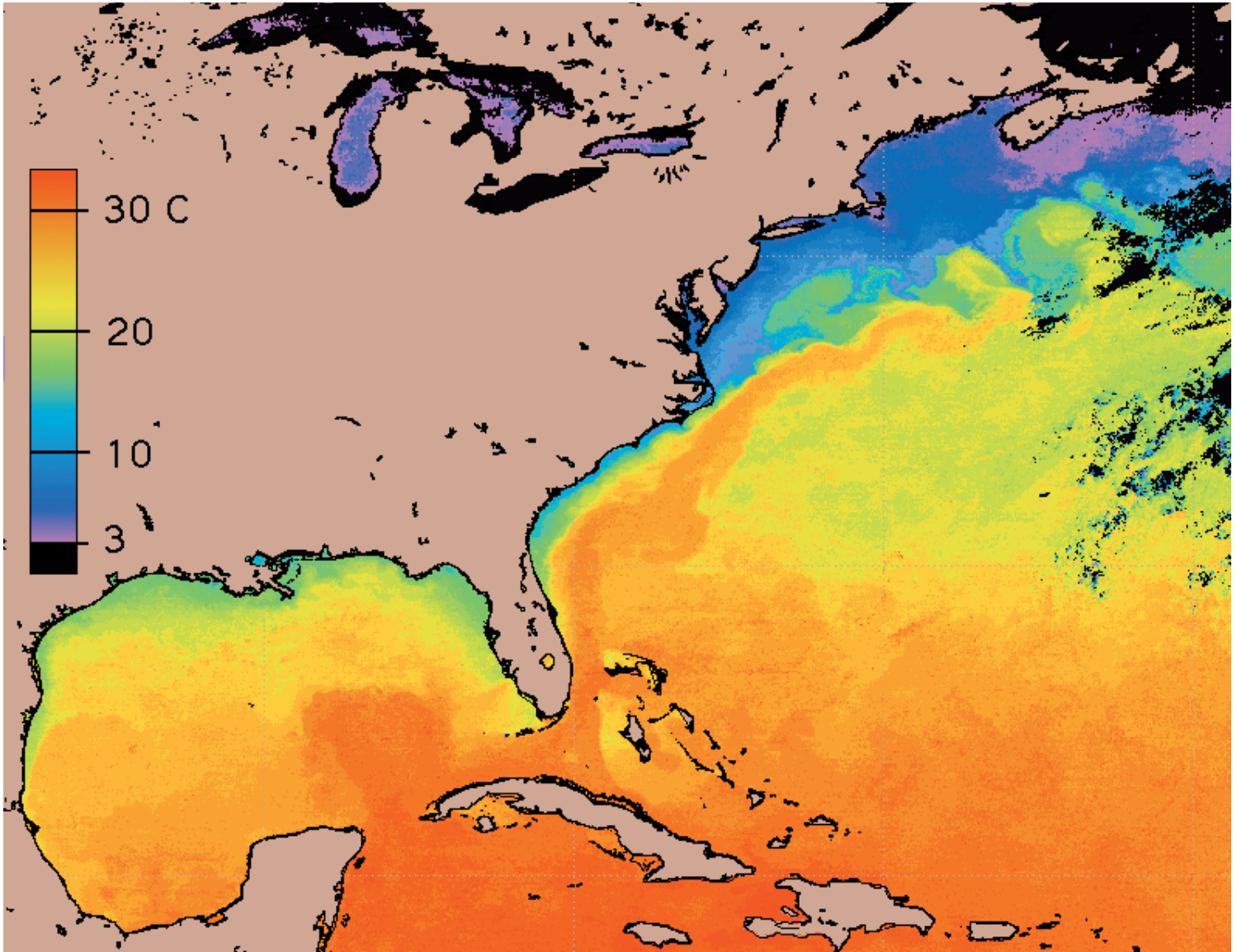




## National Oceanic and Atmospheric Administration National Environmental Satellite, Data and Information Service



# ***GOES - SEA SURFACE TEMPERATURE***

The GOES Sea Surface Temperatures (SST) are computed in an experimental NOAA satellite product which takes advantage of the half hourly geostationary satellite observations. By compositing all the warmest water samples over several days, it is possible to remove many of the clouds that usually obscure the ocean surface. This composite consists of GOES SST data from 14-18 January 1999 using only daytime SST observations. The image reveals the position of Loop Current in the Gulf of Mexico and the Gulf Stream off the east coast of the United States.