

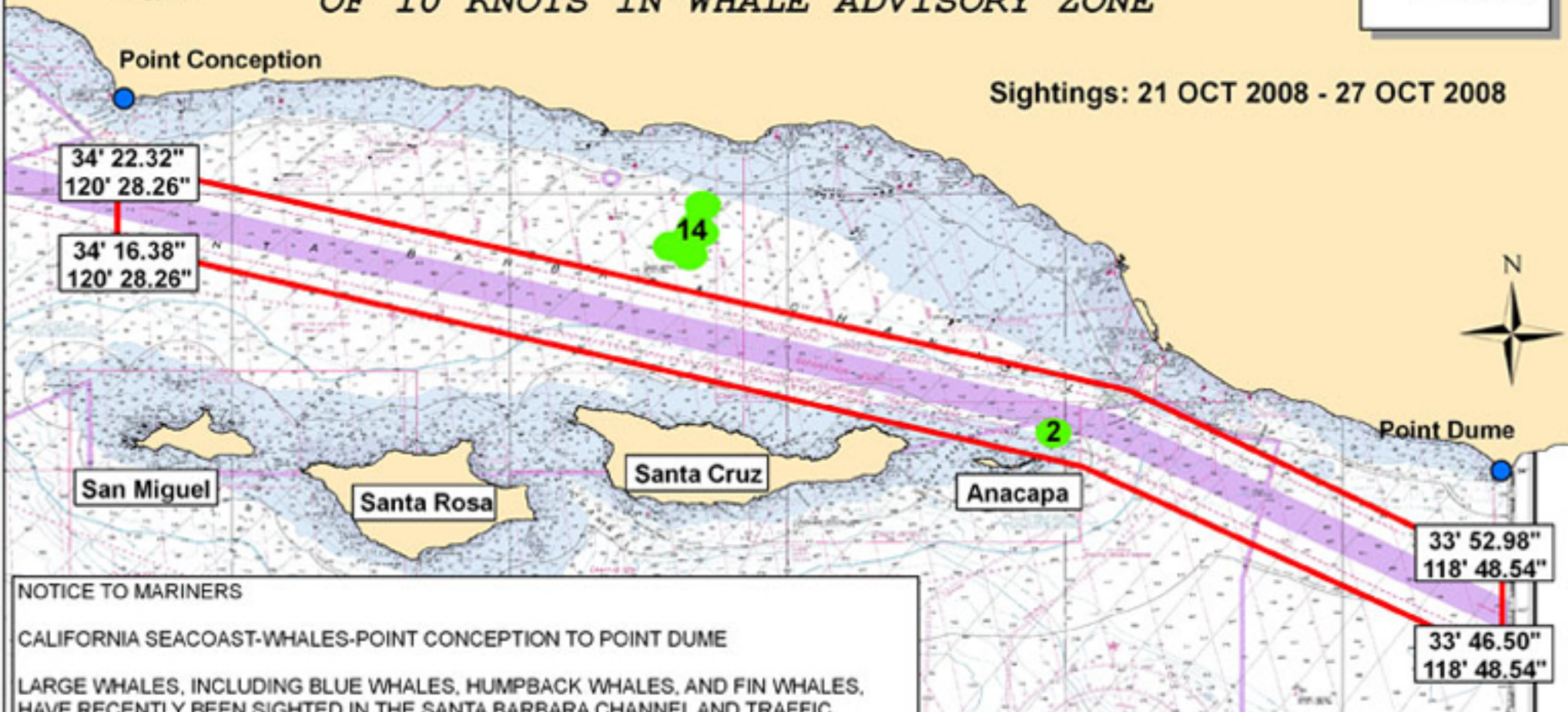


BE ADVISED KEEP A SHARP LOOKOUT FOR LARGE WHALES

*NOAA RECOMMENDS SPEEDS NOT IN EXCESS
OF 10 KNOTS IN WHALE ADVISORY ZONE*



Sightings: 21 OCT 2008 - 27 OCT 2008



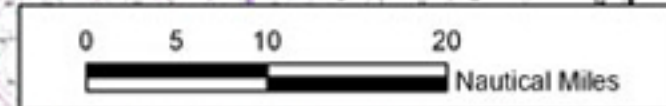
NOTICE TO MARINERS

CALIFORNIA SEACOAST-WHALES-POINT CONCEPTION TO POINT DUME

LARGE WHALES, INCLUDING BLUE WHALES, HUMPBACK WHALES, AND FIN WHALES, HAVE RECENTLY BEEN SIGHTED IN THE SANTA BARBARA CHANNEL AND TRAFFIC SEPARATION SCHEME BETWEEN POINT CONCEPTION AND POINT DUME. THESE LARGE WHALES ARE LISTED AS ENDANGERED SPECIES AND ARE PROTECTED UNDER FEDERAL LAW.

MARINERS ARE ADVISED TO KEEP A SHARP LOOKOUT FOR THESE LARGE WHALES. NOAA STRONGLY RECOMMENDS THAT VESSELS 300 GROSS REGISTERED TONS OR LARGER TRANSITING THE TRAFFIC SEPARATION SCHEME DO SO AT SPEEDS NOT IN EXCESS OF 10 KNOTS.

PLEASE REPORT ANY COLLISIONS WITH WHALES AND ANY OBSERVED LIVE, INJURED OR DEAD WHALES, INCLUDING TIME AND POSITION, TO NOAA AT 562-980-4017 OR TO THE U.S. COAST GUARD



- Whale Sightings
- Whale Advisory Zone

Coordinates Reported in Decimal Minutes

Chart Not for Navigational Purposes